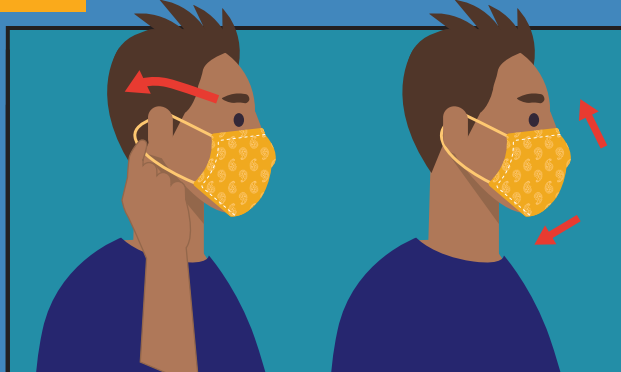


Wear a Mask to Protect You and Your Friends

PUT ON



WASH YOUR HANDS



PLACE OVER NOSE AND MOUTH

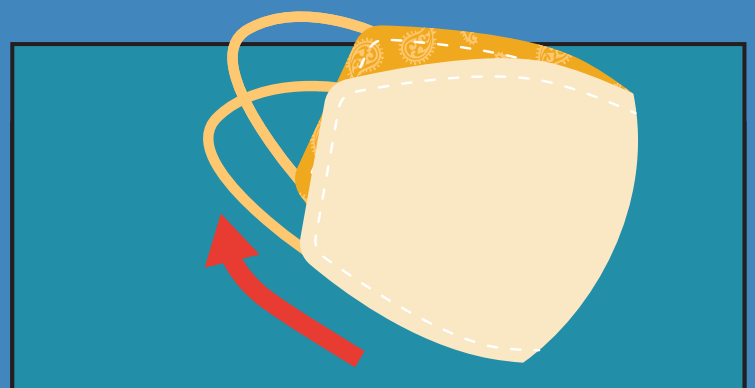


MAKE SURE YOU CAN
BREATHE EASILY

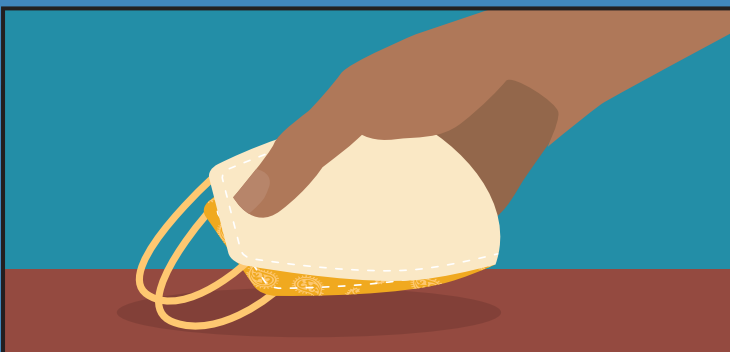
TAKE OFF



TAKE OFF YOUR MASK



FOLD OUTSIDE CORNERS TOGETHER



PUT ASIDE FOR WASHING



WASH YOUR HANDS

WASH YOUR HANDS OFTEN, WEAR A MASK, AND
STAY 6 FEET FROM OTHERS.

