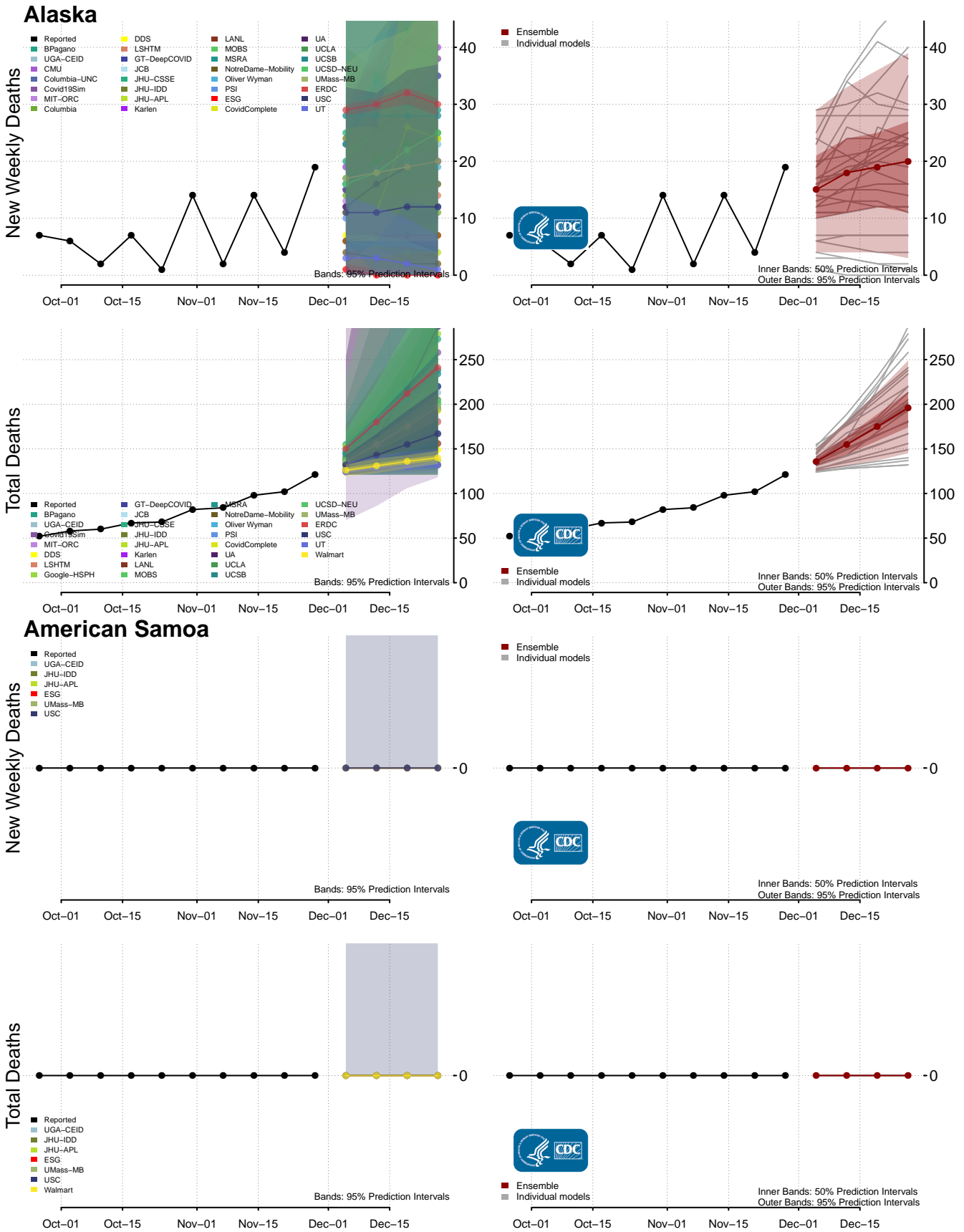
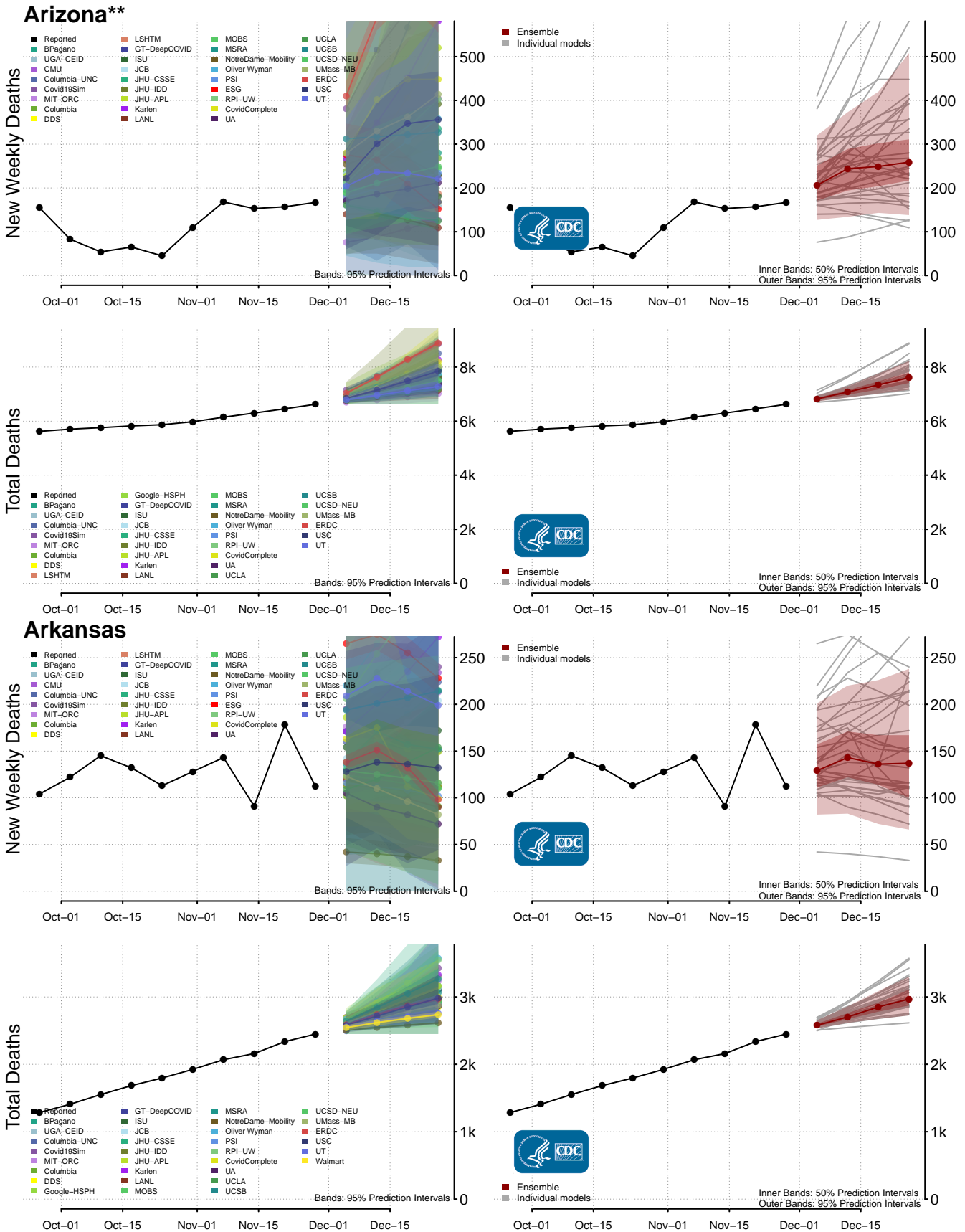
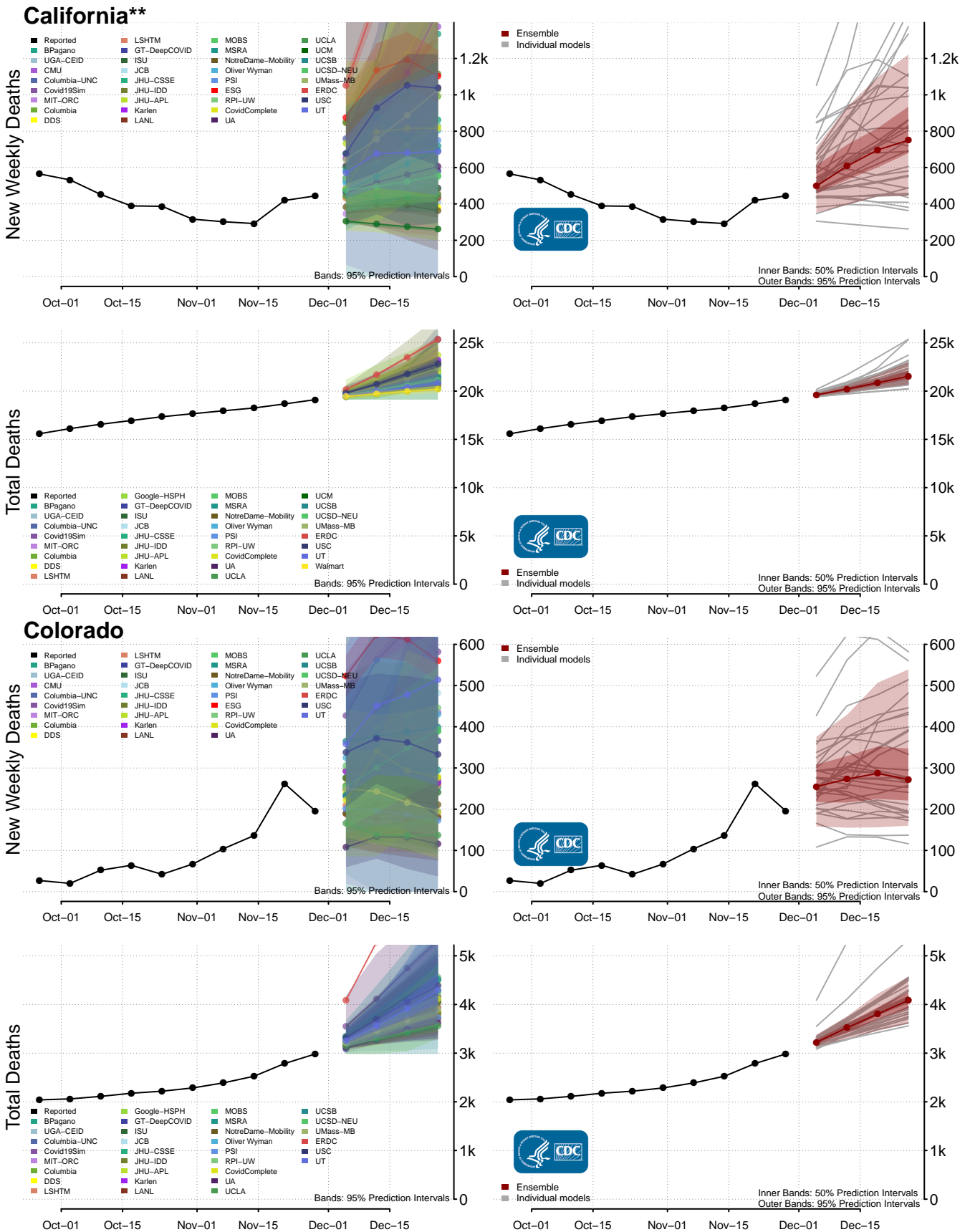


**New weekly deaths may increase in this location over the next four weeks. For these locations, the ensemble forecast indicates a probability of 0.75 or greater that more deaths will be reported in week four of the forecast than in the last reported week.

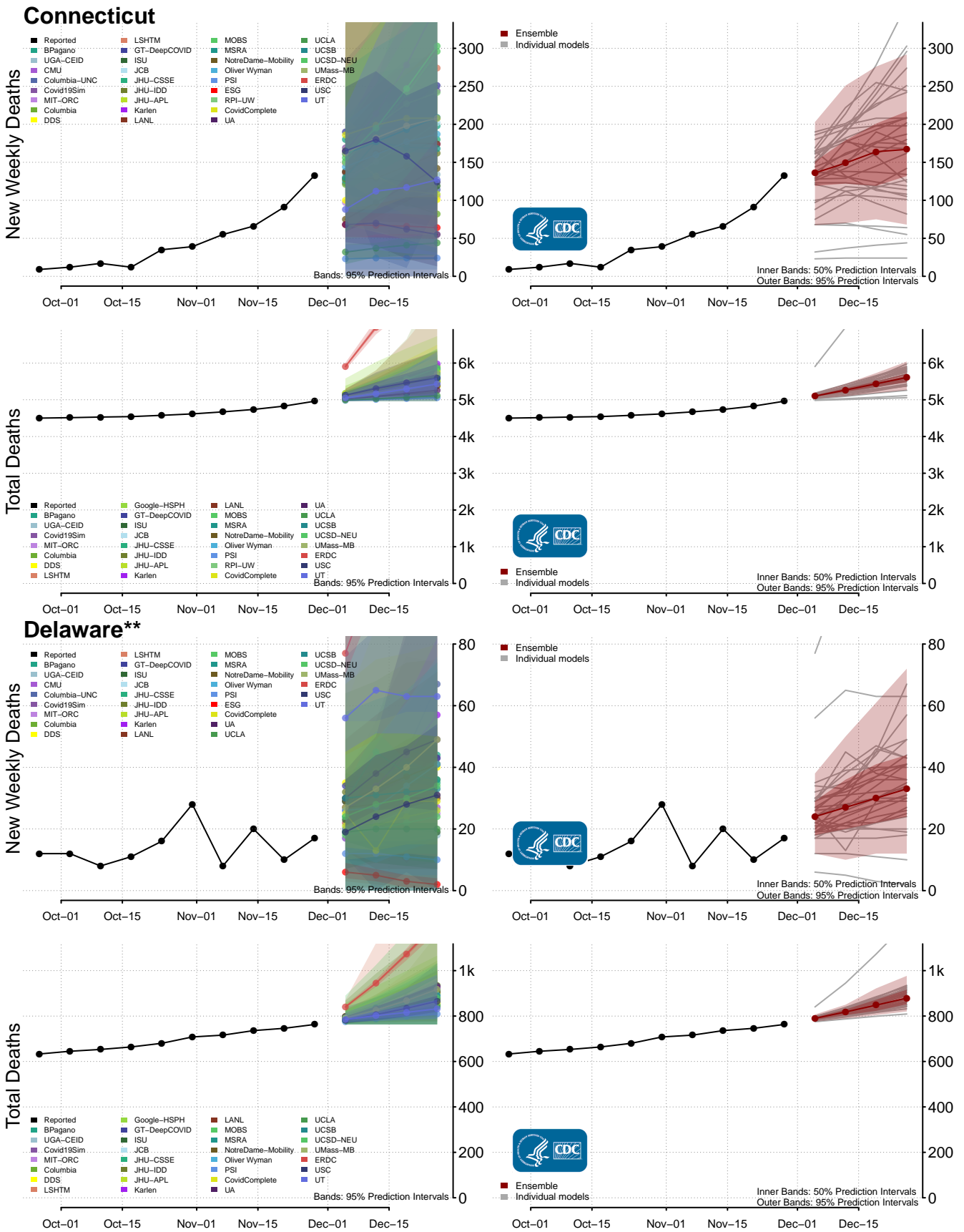




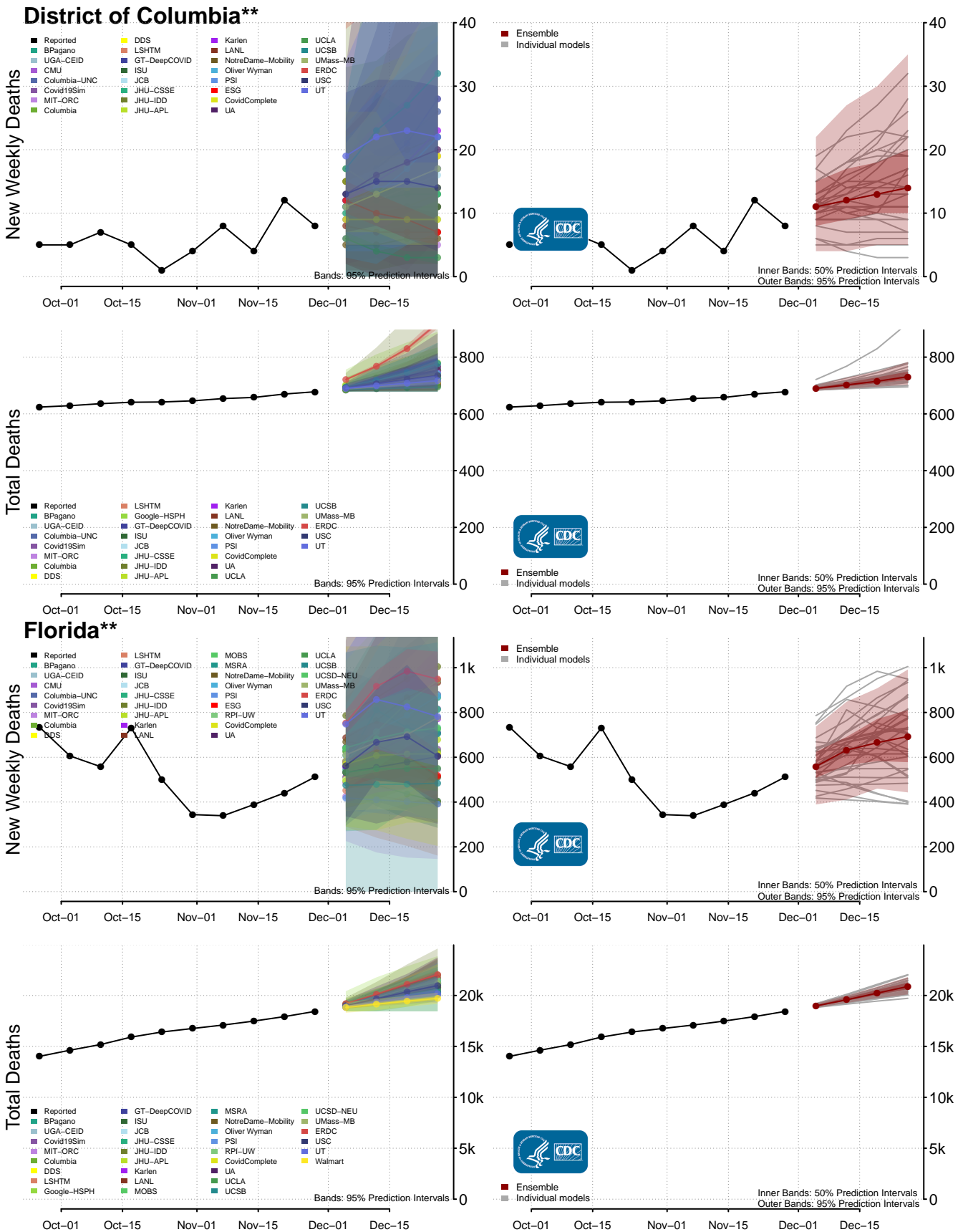
**New weekly deaths may increase in this location over the next four weeks. For these locations, the ensemble forecast indicates a probability of 0.75 or greater that more deaths will be reported in week four of the forecast than in the last reported week.



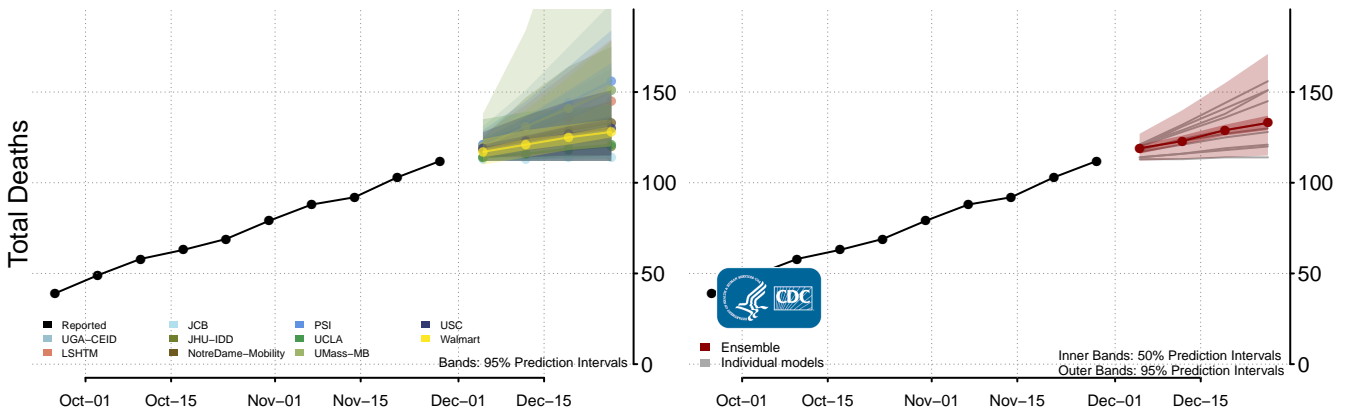
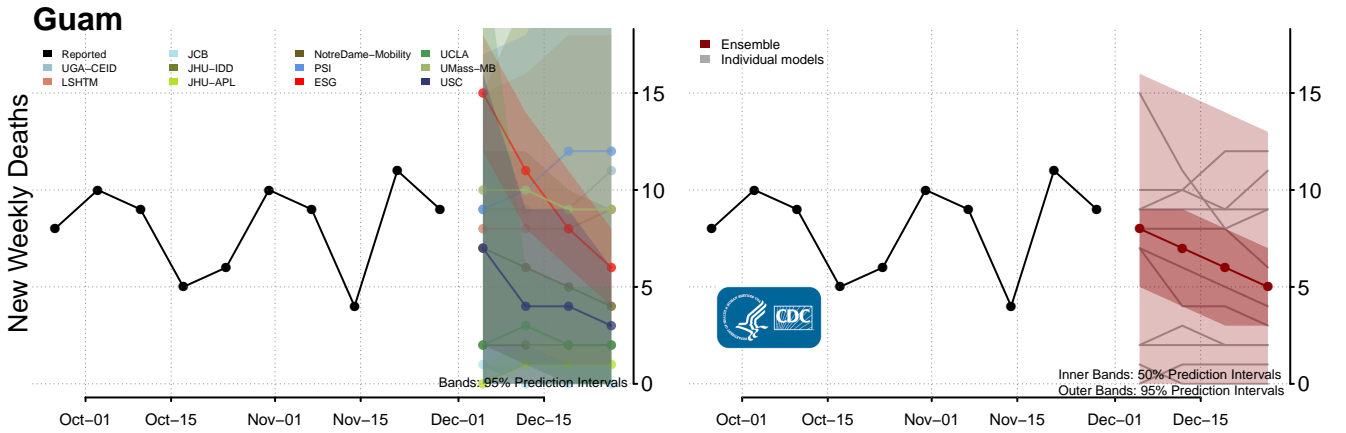
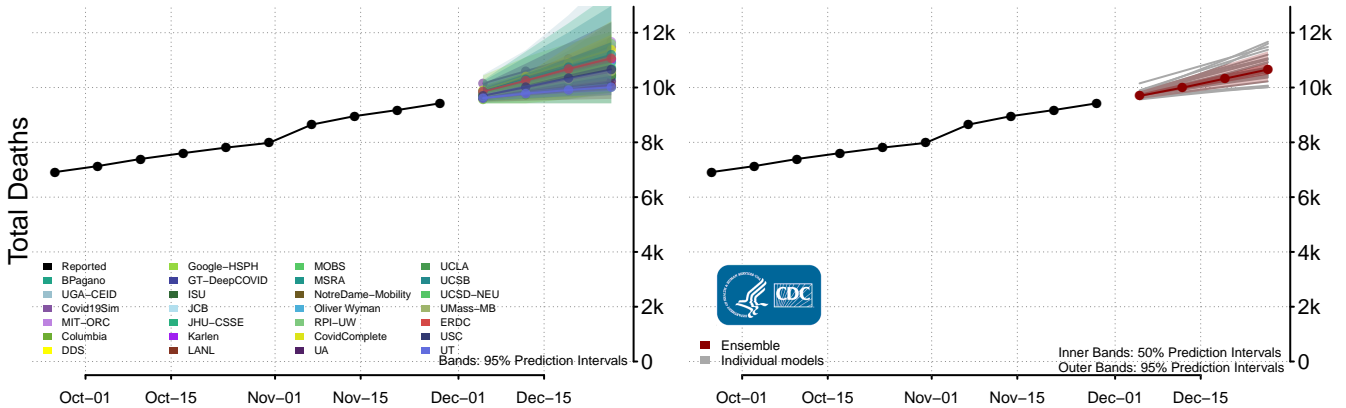
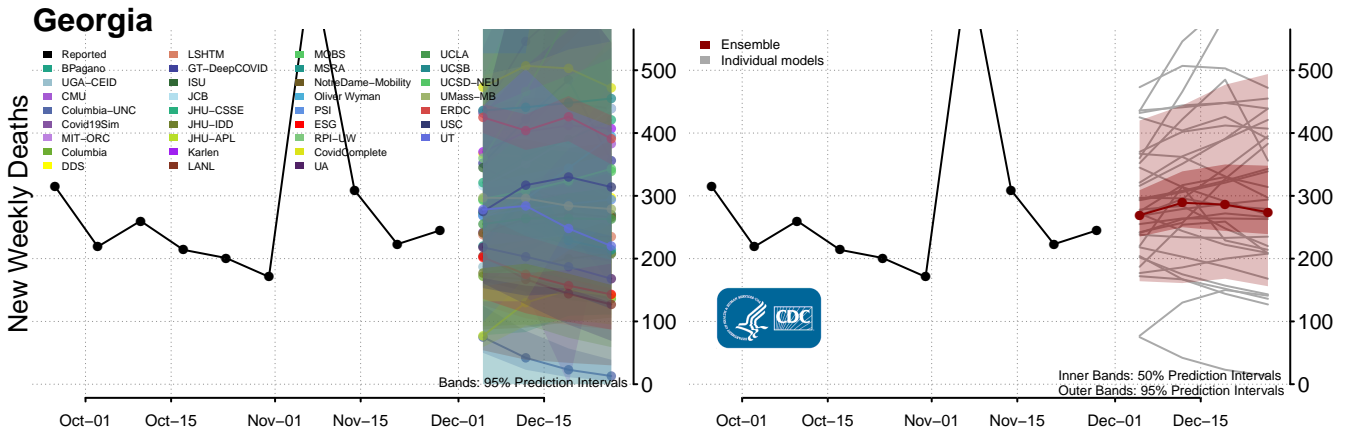
**New weekly deaths may increase in this location over the next four weeks. For these locations, the ensemble forecast indicates a probability of 0.75 or greater that more deaths will be reported in week four of the forecast than in the last reported week.



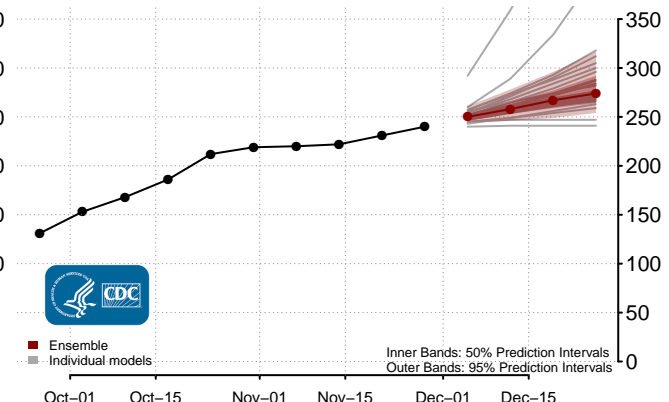
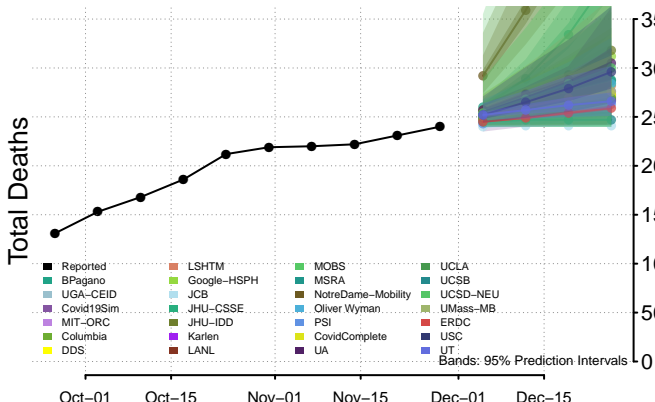
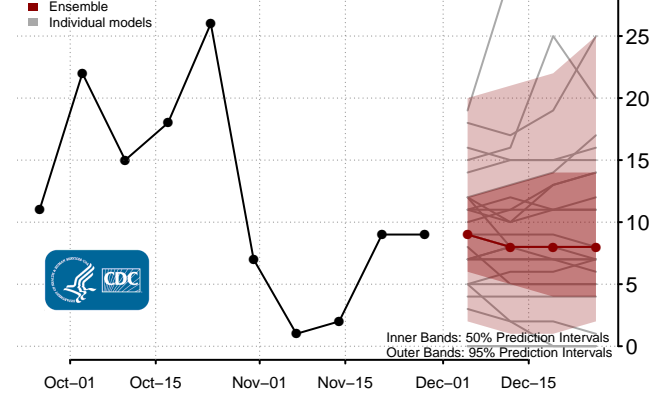
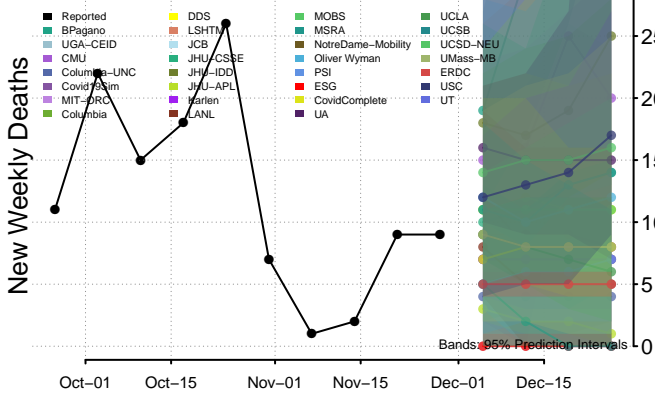
**New weekly deaths may increase in this location over the next four weeks. For these locations, the ensemble forecast indicates a probability of 0.75 or greater that more deaths will be reported in week four of the forecast than in the last reported week.



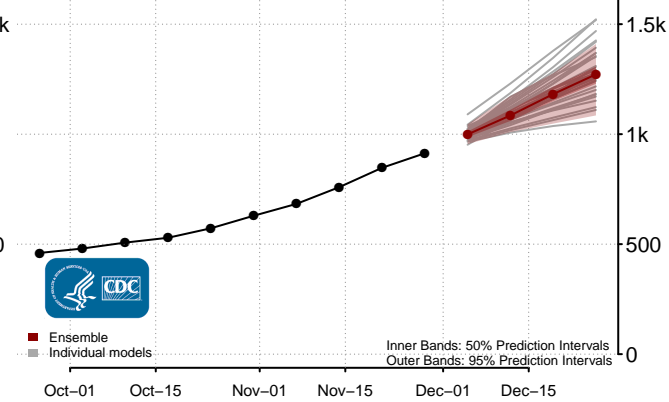
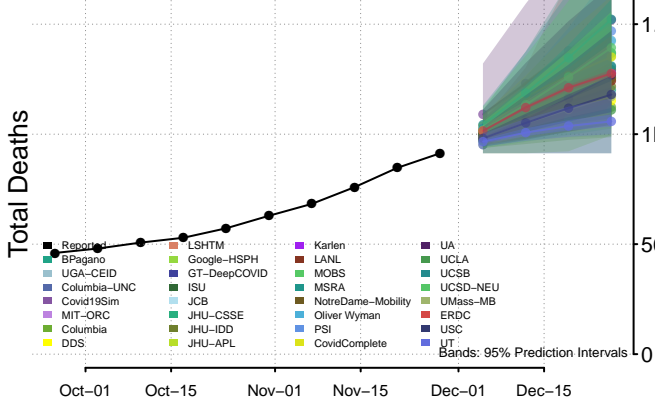
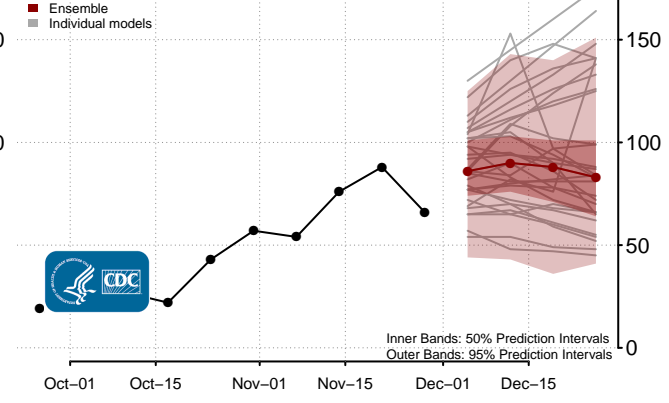
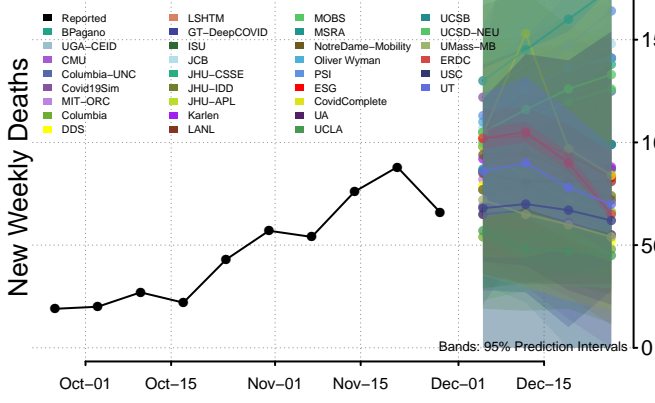
**New weekly deaths may increase in this location over the next four weeks. For these locations, the ensemble forecast indicates a probability of 0.75 or greater that more deaths will be reported in week four of the forecast than in the last reported week.



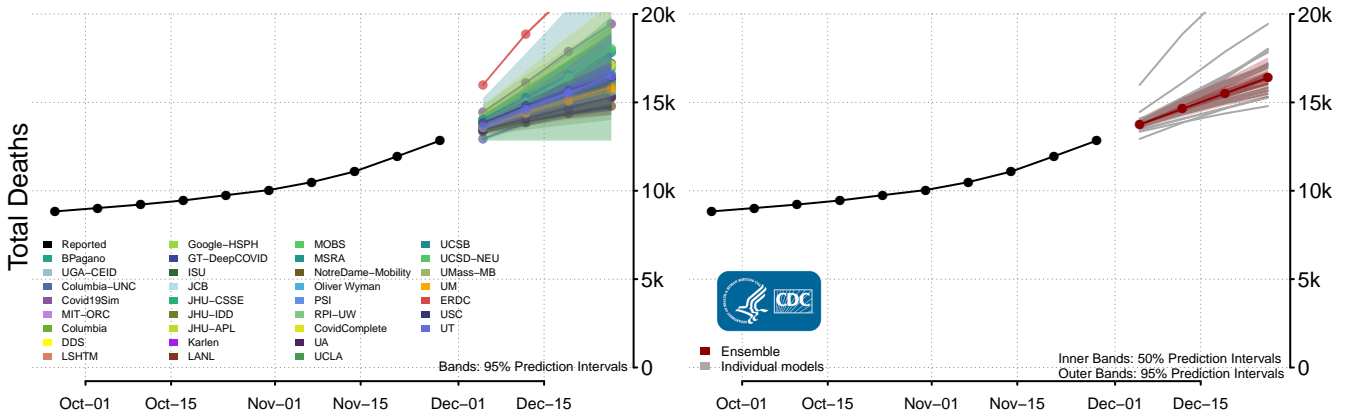
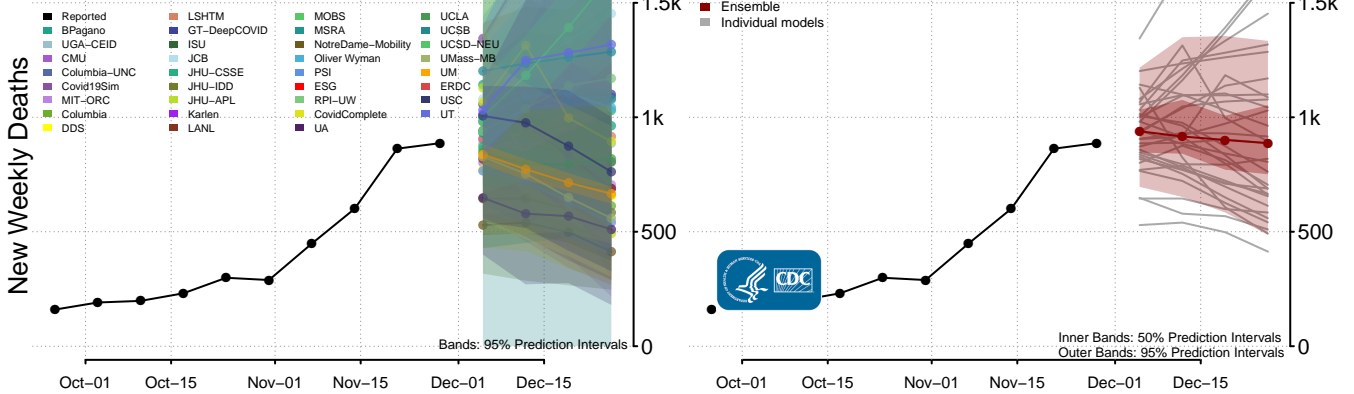
Hawaii



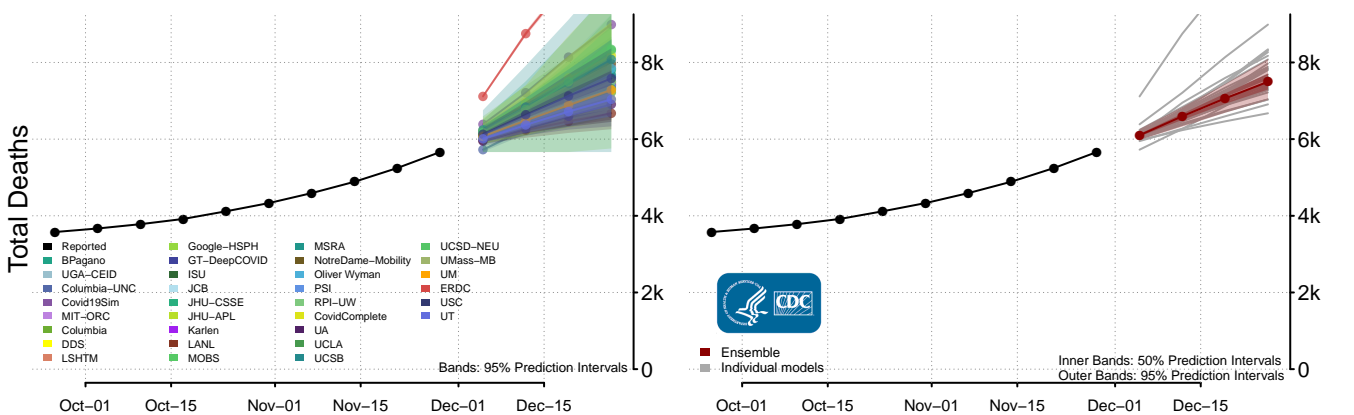
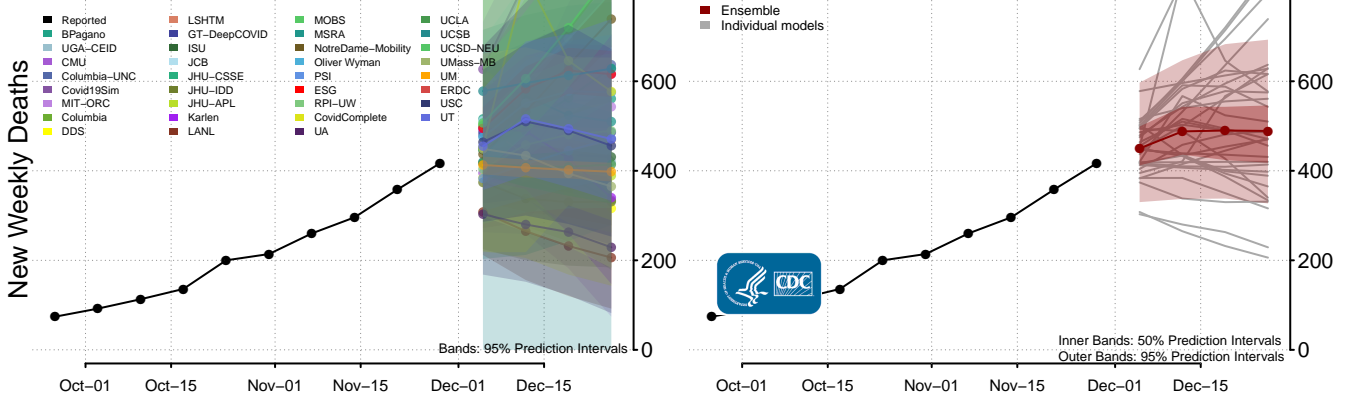
Idaho



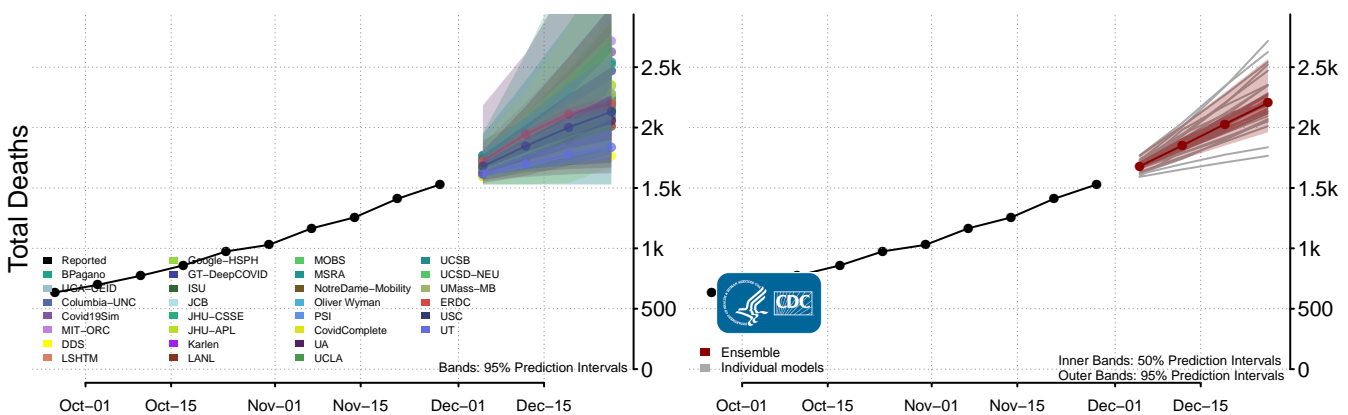
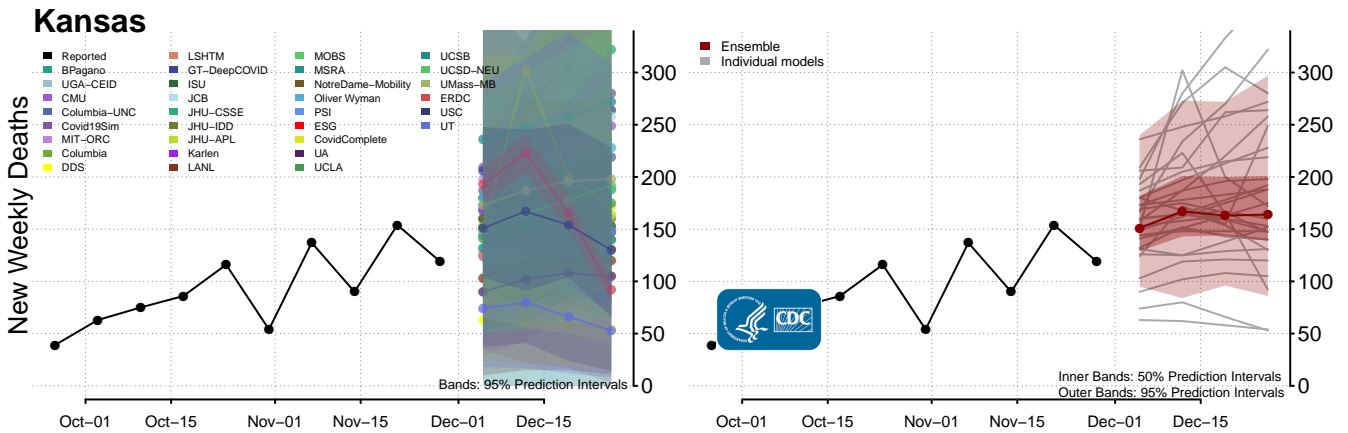
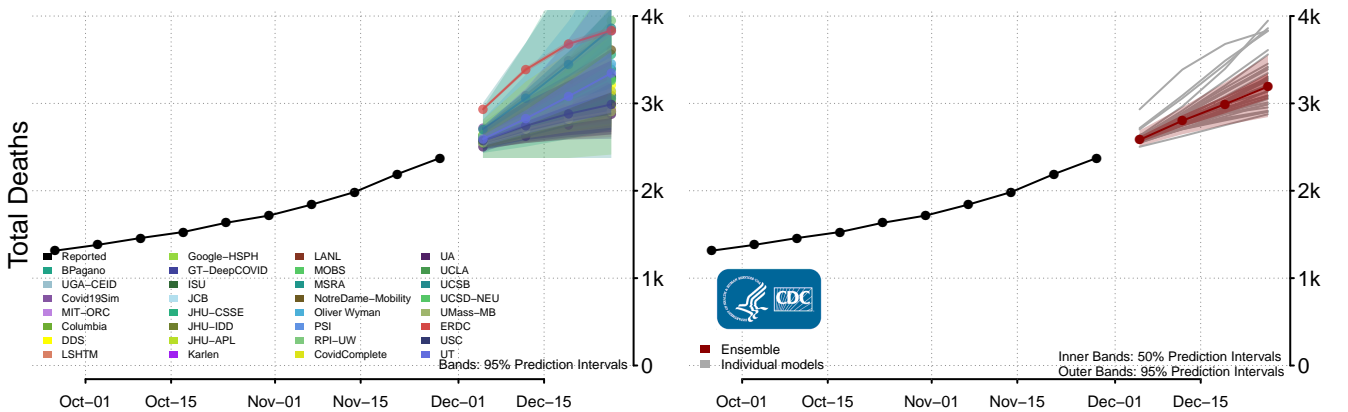
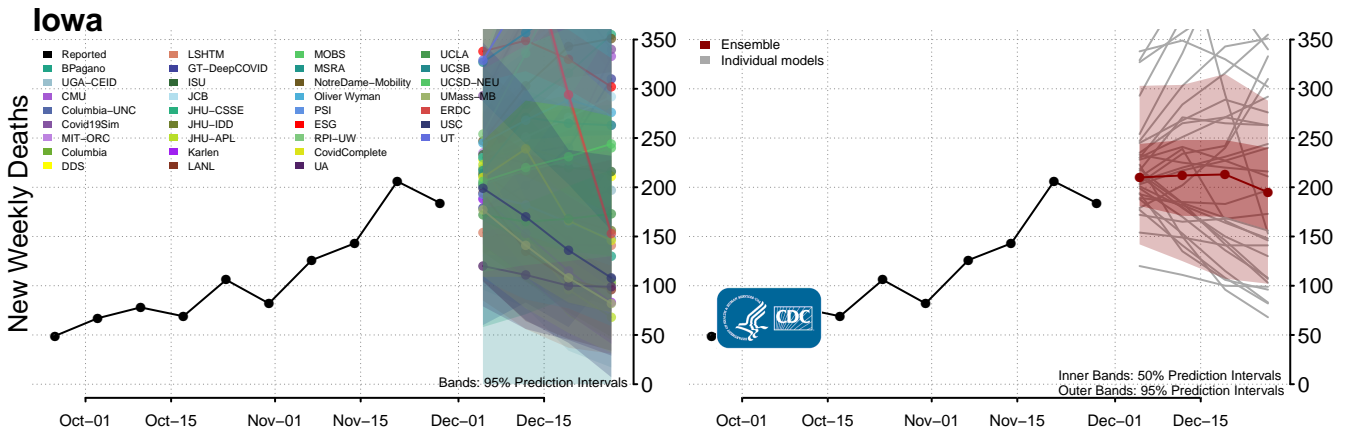
Illinois

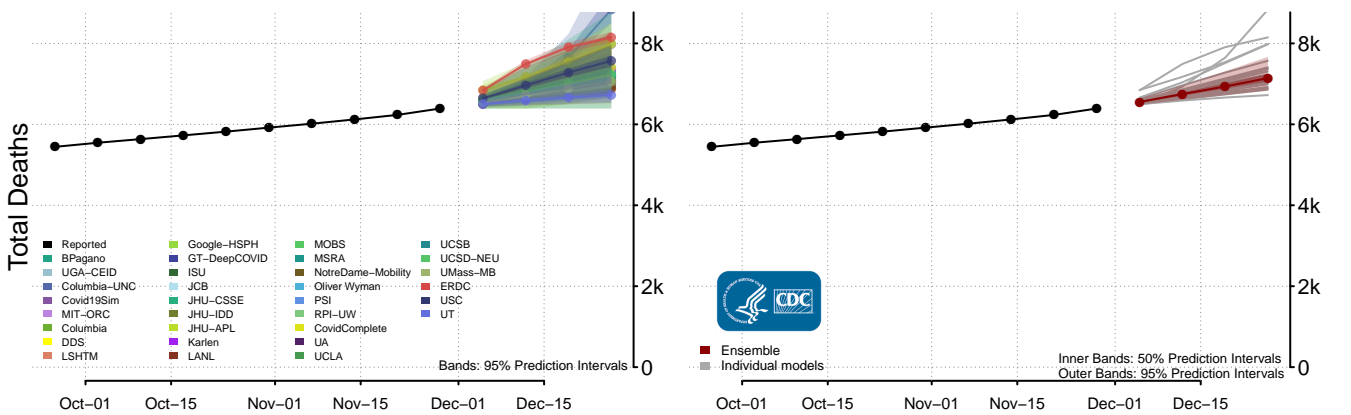
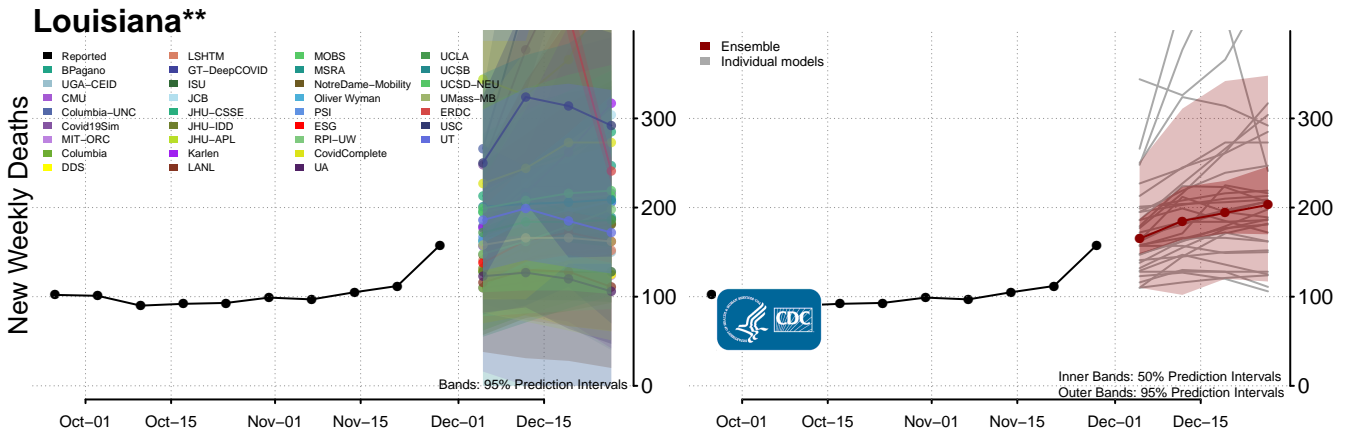
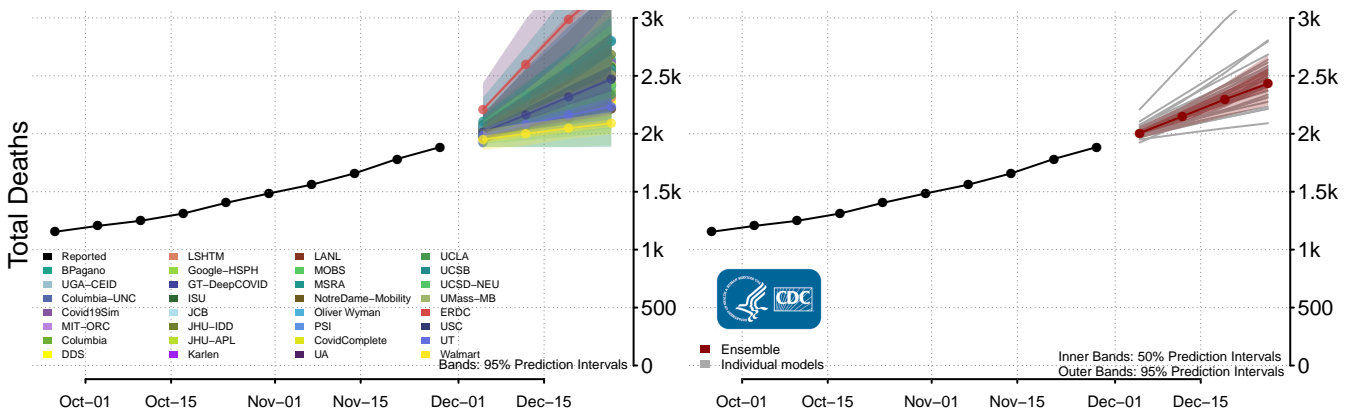
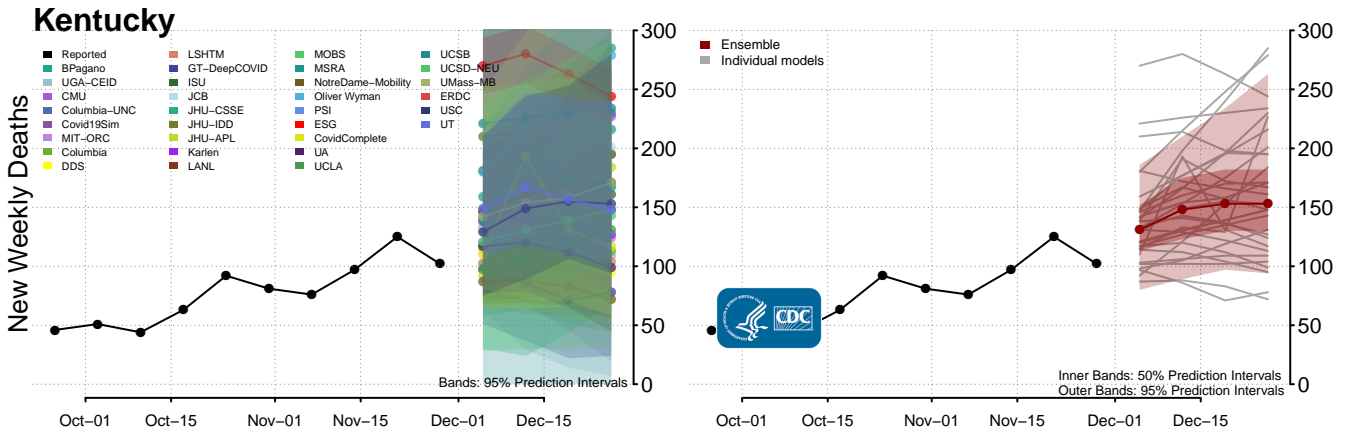


Indiana**

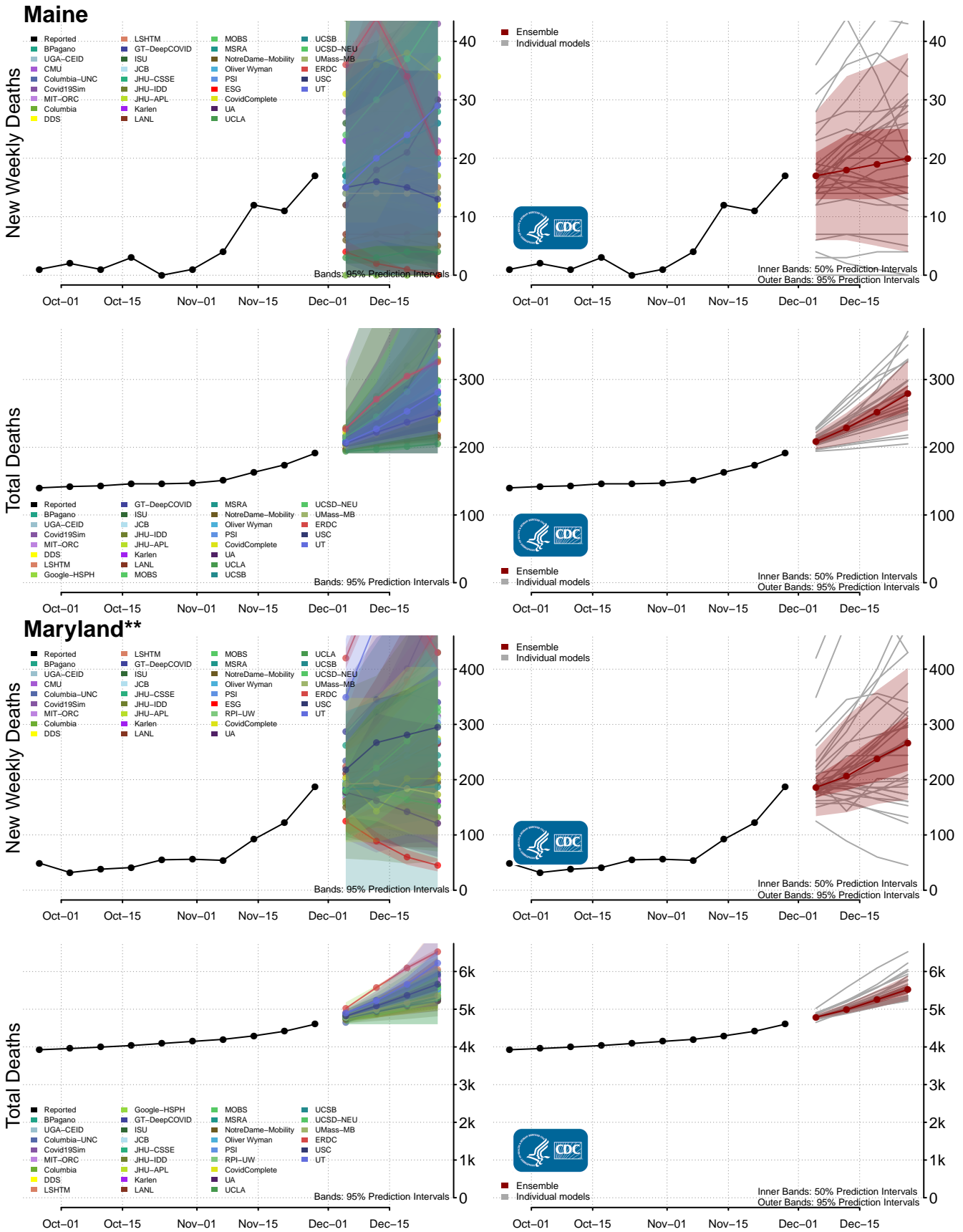


**New weekly deaths may increase in this location over the next four weeks. For these locations, the ensemble forecast indicates a probability of 0.75 or greater that more deaths will be reported in week four of the forecast than in the last reported week.

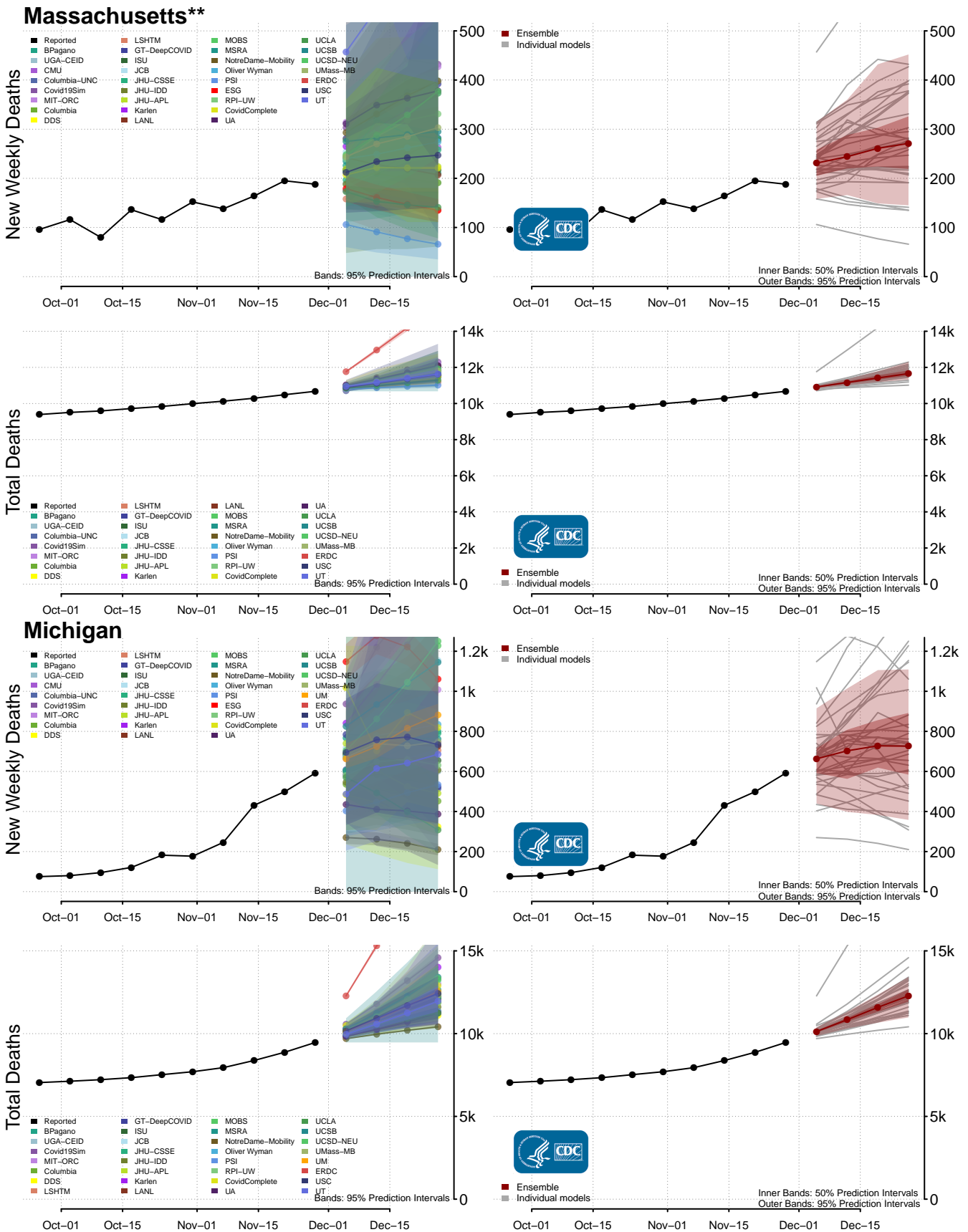




**New weekly deaths may increase in this location over the next four weeks. For these locations, the ensemble forecast indicates a probability of 0.75 or greater that more deaths will be reported in week four of the forecast than in the last reported week.

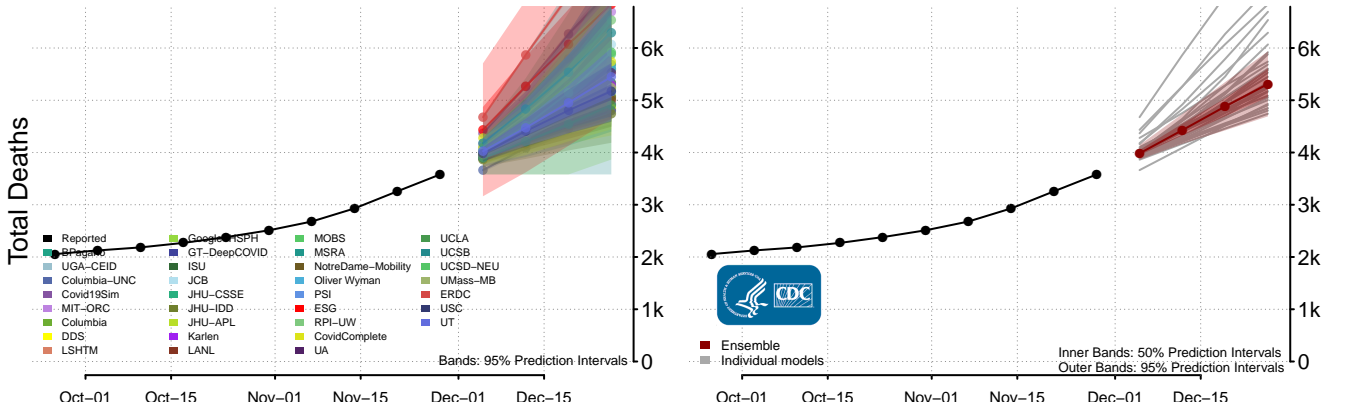
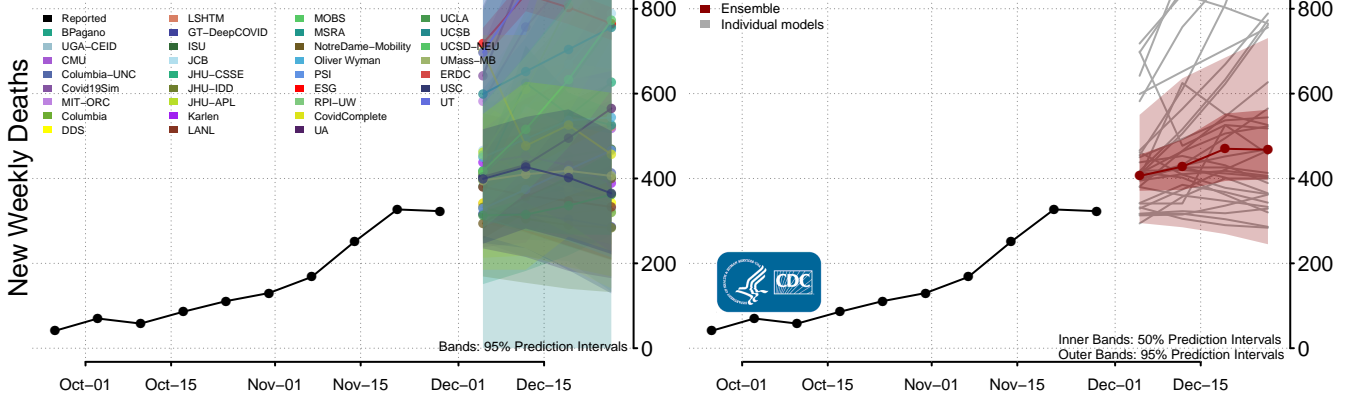


**New weekly deaths may increase in this location over the next four weeks. For these locations, the ensemble forecast indicates a probability of 0.75 or greater that more deaths will be reported in week four of the forecast than in the last reported week.

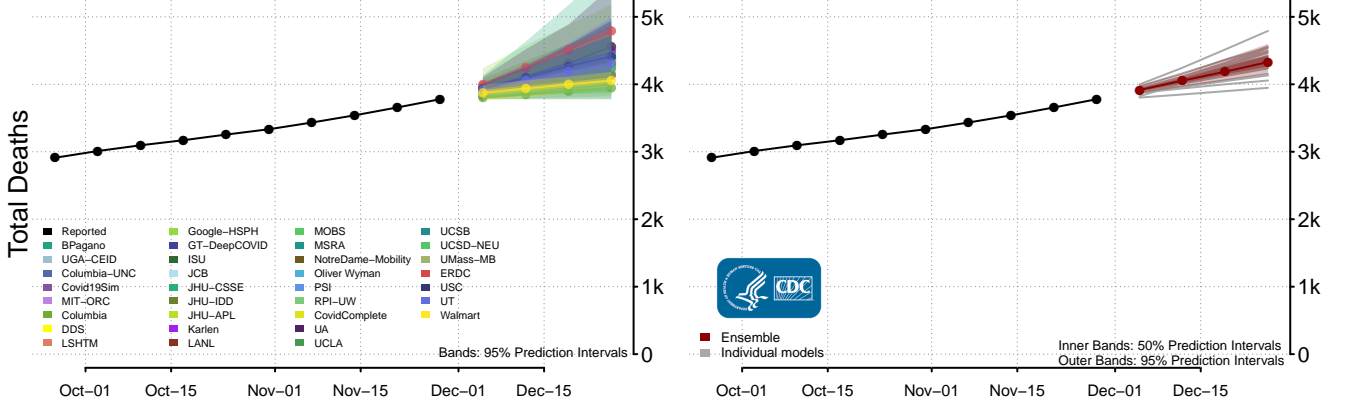
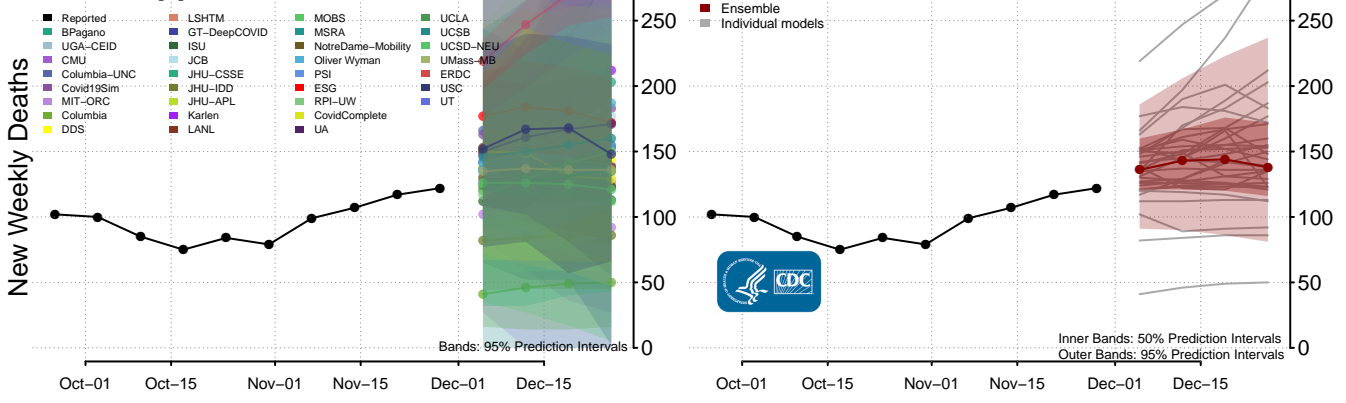


**New weekly deaths may increase in this location over the next four weeks. For these locations, the ensemble forecast indicates a probability of 0.75 or greater that more deaths will be reported in week four of the forecast than in the last reported week.

Minnesota**

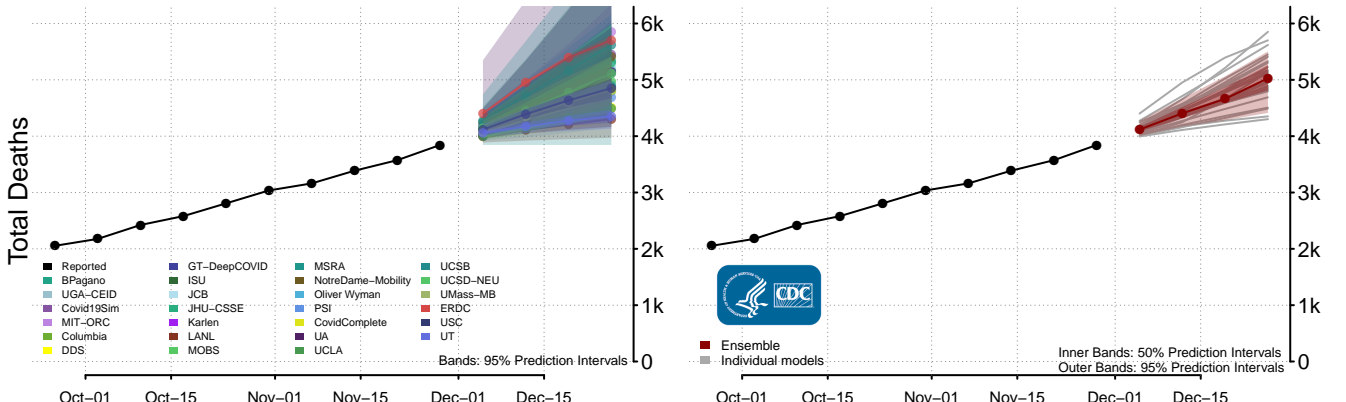
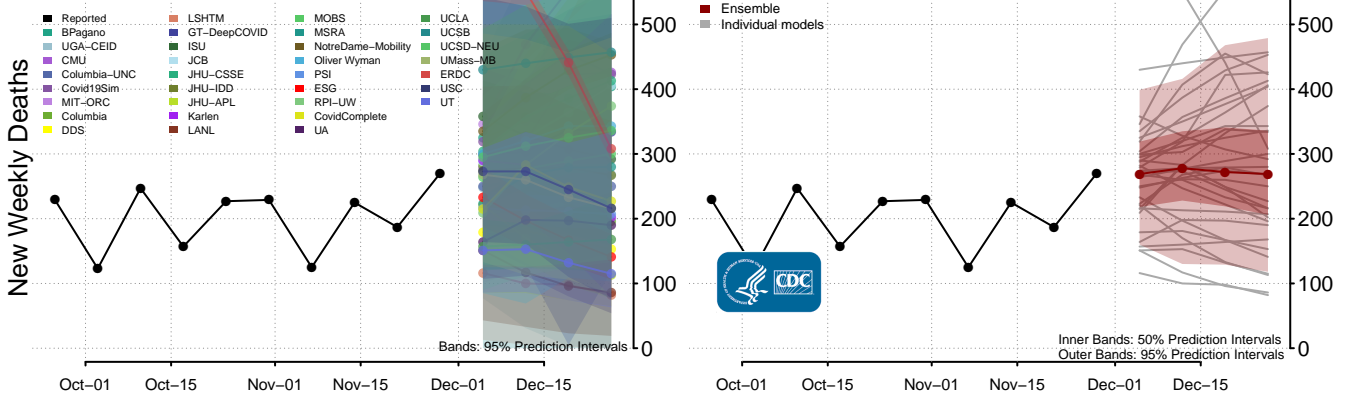


Mississippi

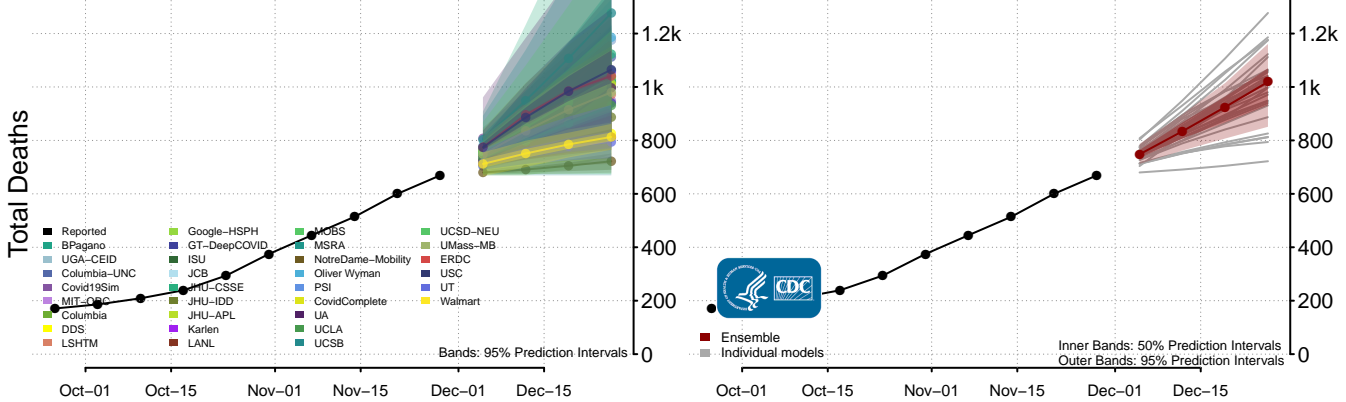
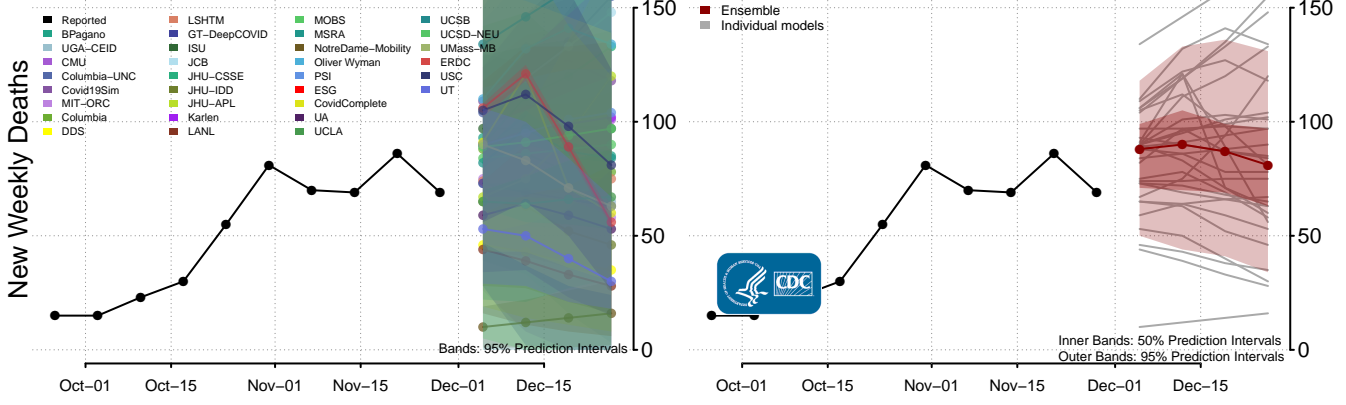


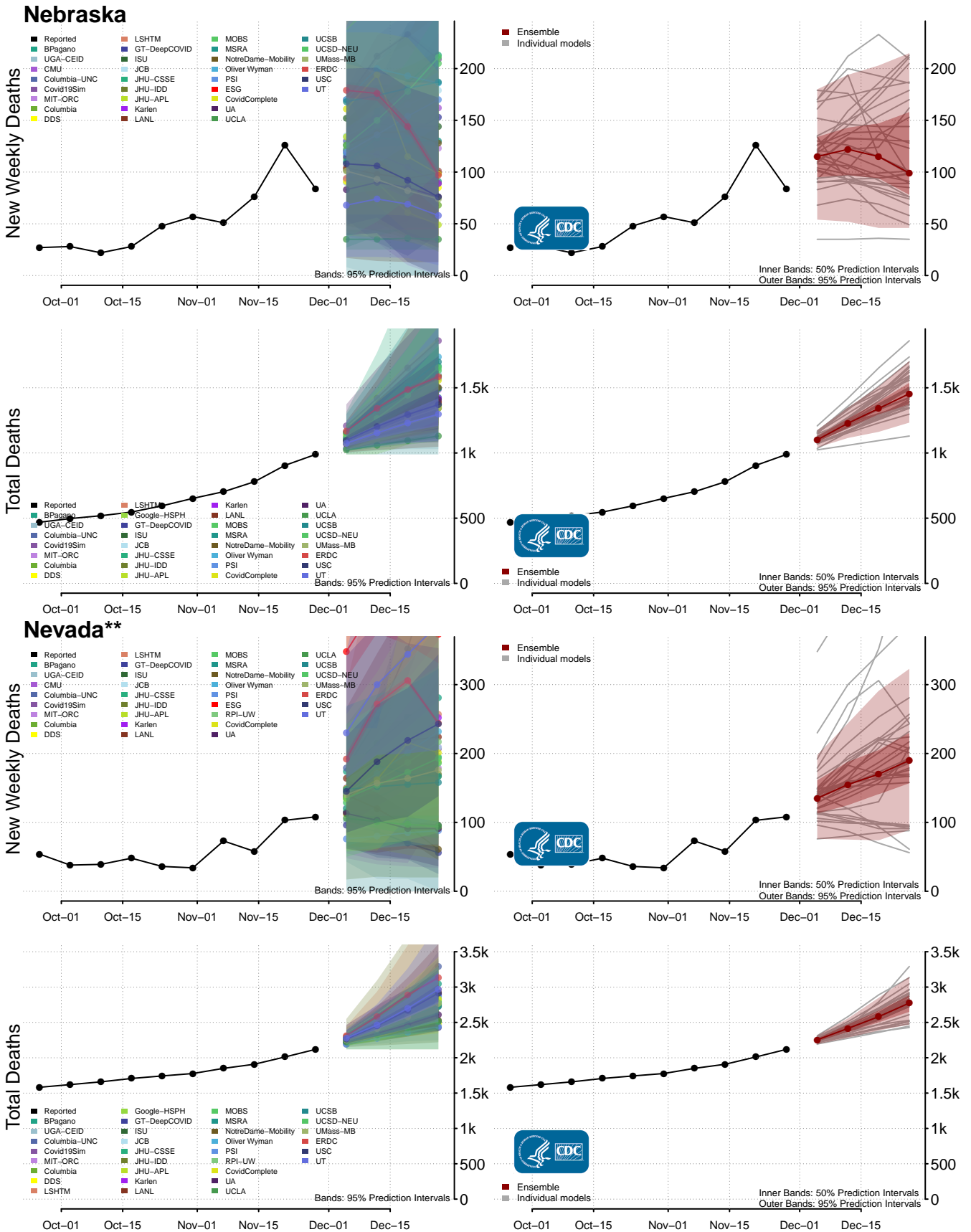
**New weekly deaths may increase in this location over the next four weeks. For these locations, the ensemble forecast indicates a probability of 0.75 or greater that more deaths will be reported in week four of the forecast than in the last reported week.

Missouri

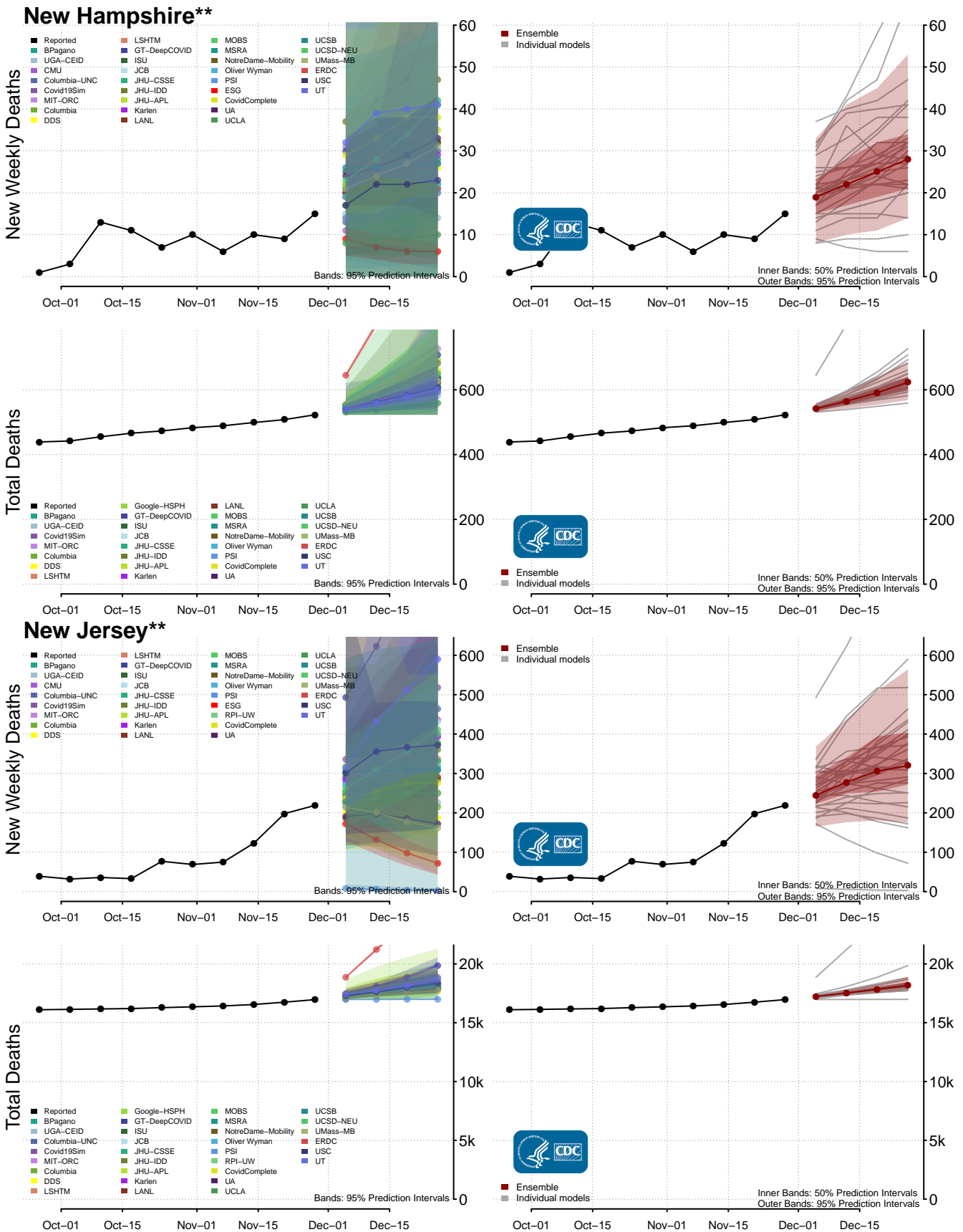


Montana

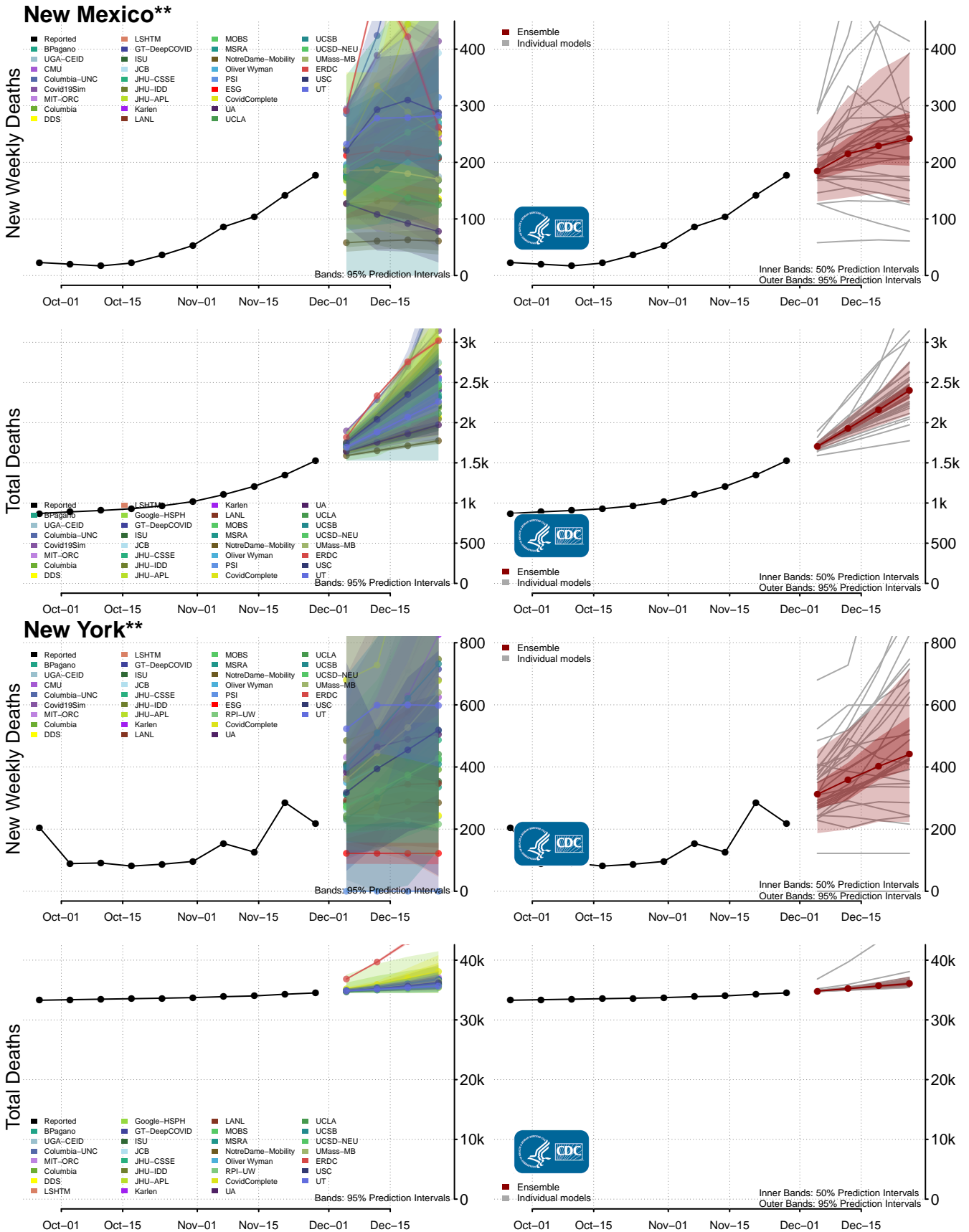




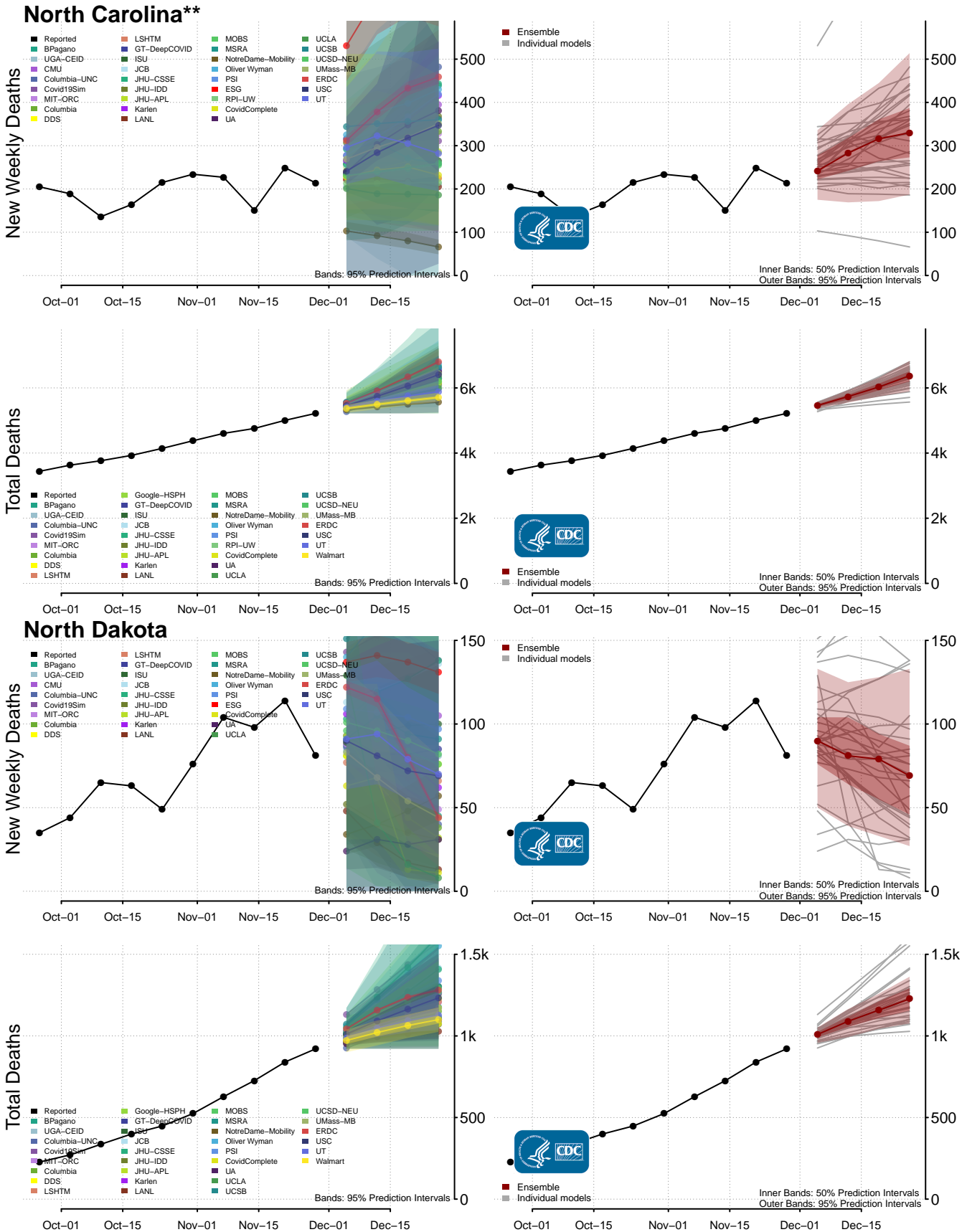
**New weekly deaths may increase in this location over the next four weeks. For these locations, the ensemble forecast indicates a probability of 0.75 or greater that more deaths will be reported in week four of the forecast than in the last reported week.



**New weekly deaths may increase in this location over the next four weeks. For these locations, the ensemble forecast indicates a probability of 0.75 or greater that more deaths will be reported in week four of the forecast than in the last reported week.

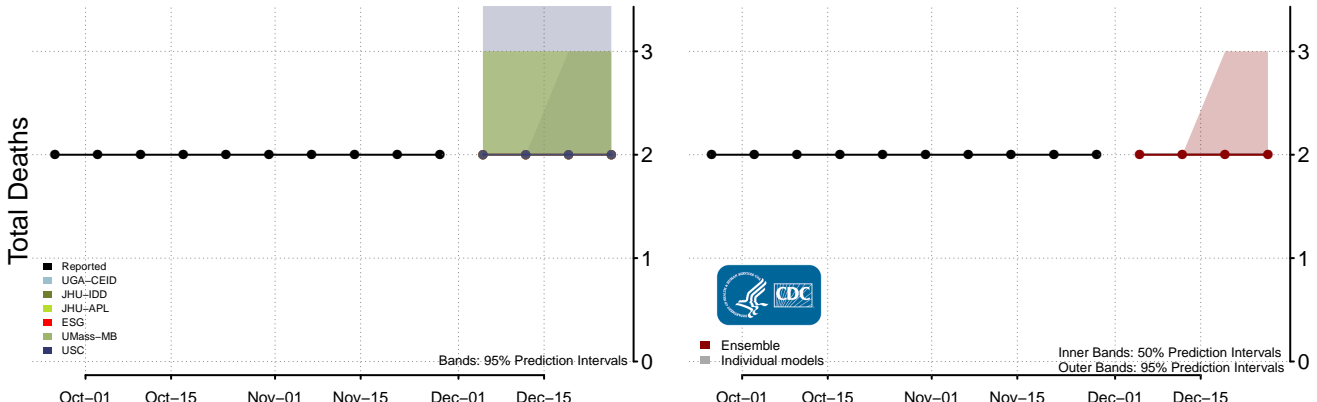
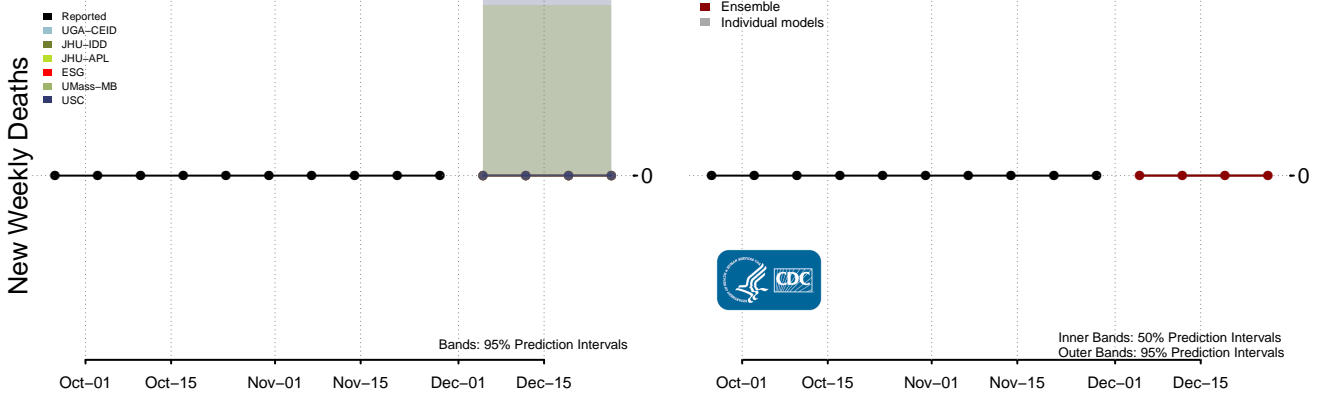


**New weekly deaths may increase in this location over the next four weeks. For these locations, the ensemble forecast indicates a probability of 0.75 or greater that more deaths will be reported in week four of the forecast than in the last reported week.

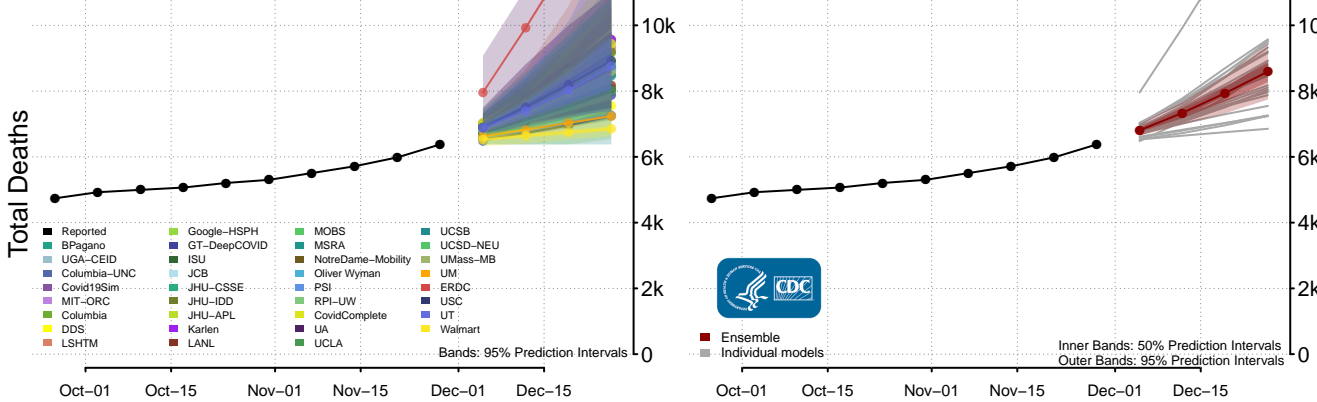
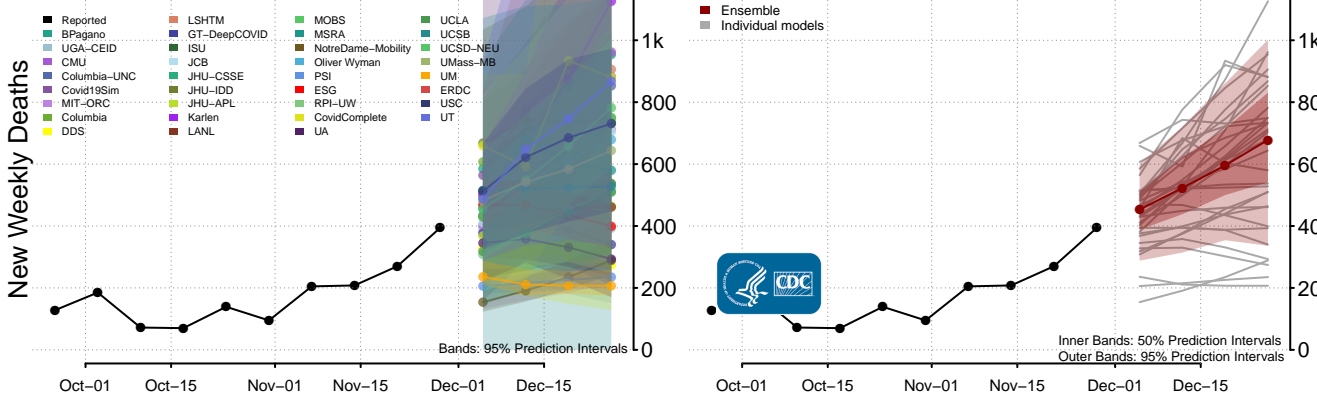


**New weekly deaths may increase in this location over the next four weeks. For these locations, the ensemble forecast indicates a probability of 0.75 or greater that more deaths will be reported in week four of the forecast than in the last reported week.

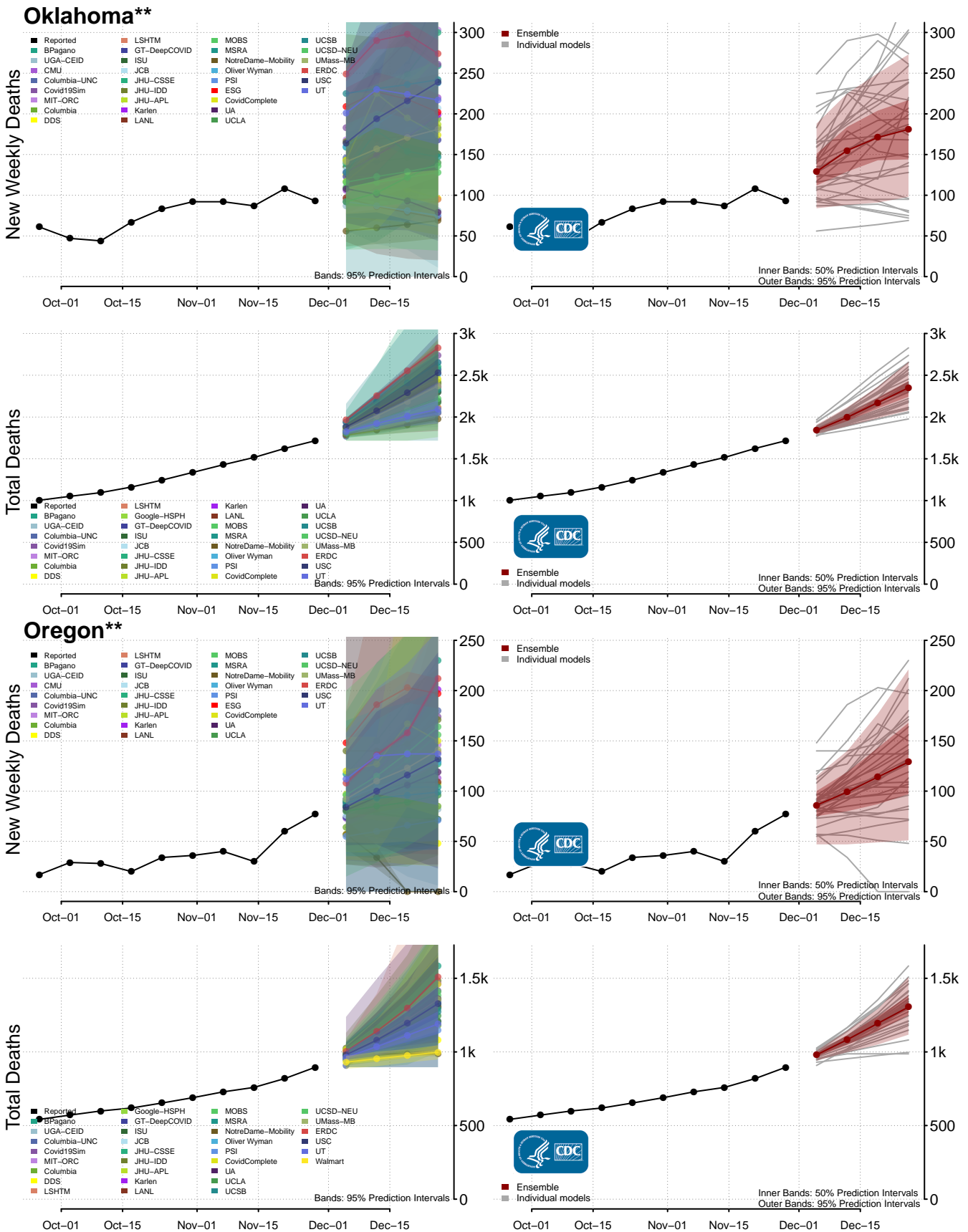
Northern Mariana Islands



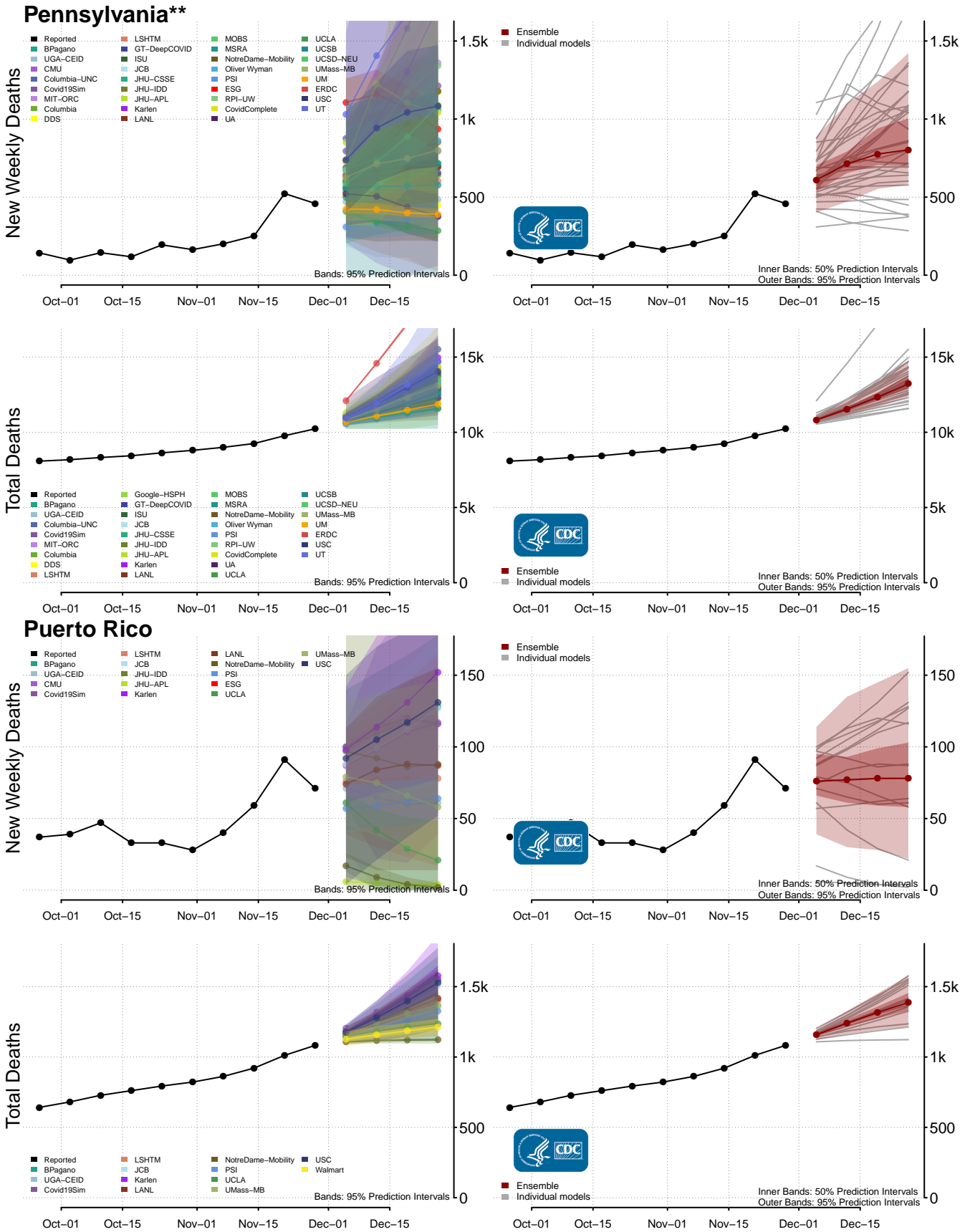
Ohio**



**New weekly deaths may increase in this location over the next four weeks. For these locations, the ensemble forecast indicates a probability of 0.75 or greater that more deaths will be reported in week four of the forecast than in the last reported week.

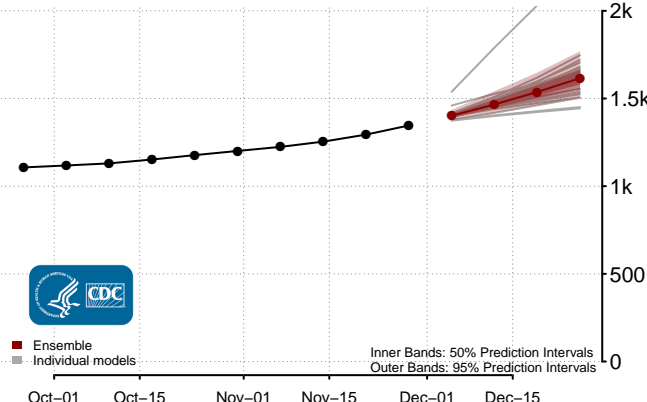
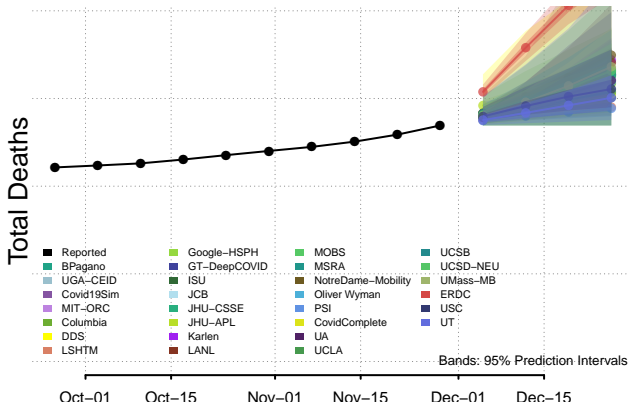
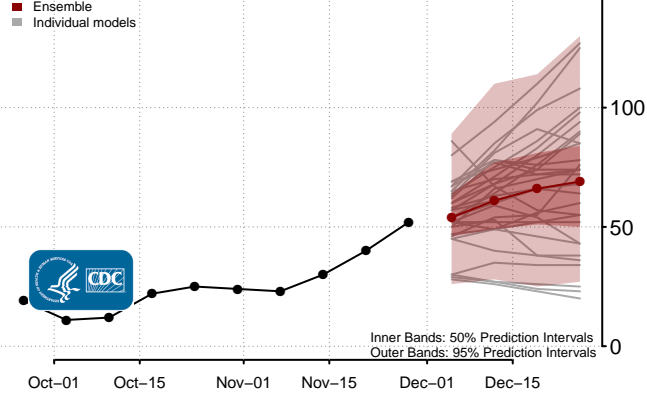
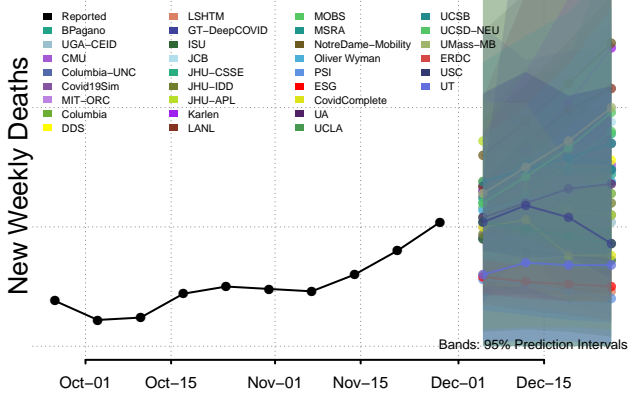


**New weekly deaths may increase in this location over the next four weeks. For these locations, the ensemble forecast indicates a probability of 0.75 or greater that more deaths will be reported in week four of the forecast than in the last reported week.

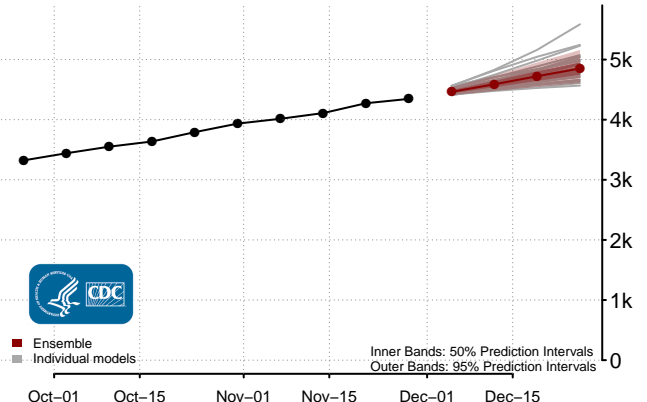
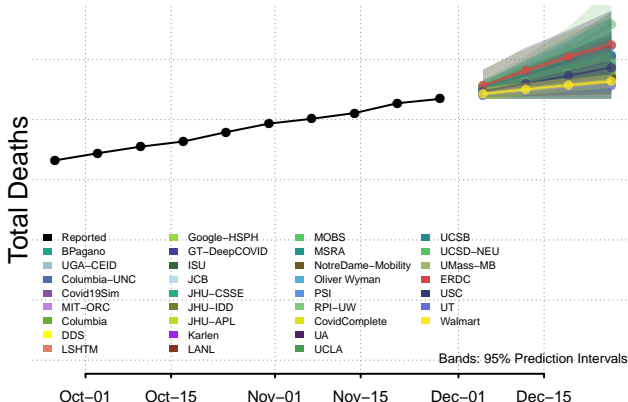
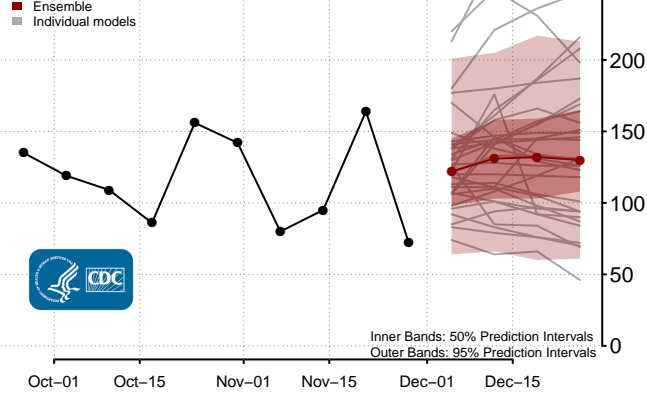
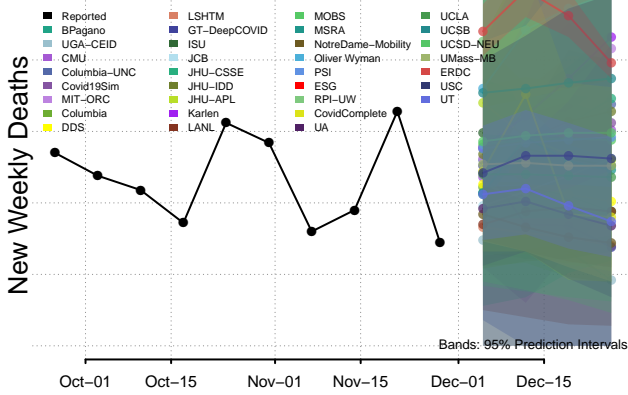


**New weekly deaths may increase in this location over the next four weeks. For these locations, the ensemble forecast indicates a probability of 0.75 or greater that more deaths will be reported in week four of the forecast than in the last reported week.

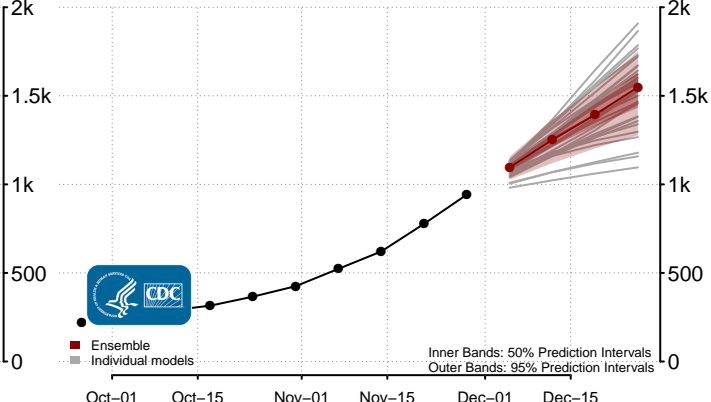
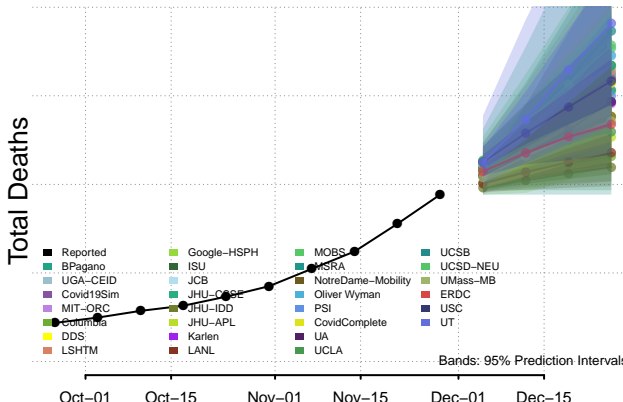
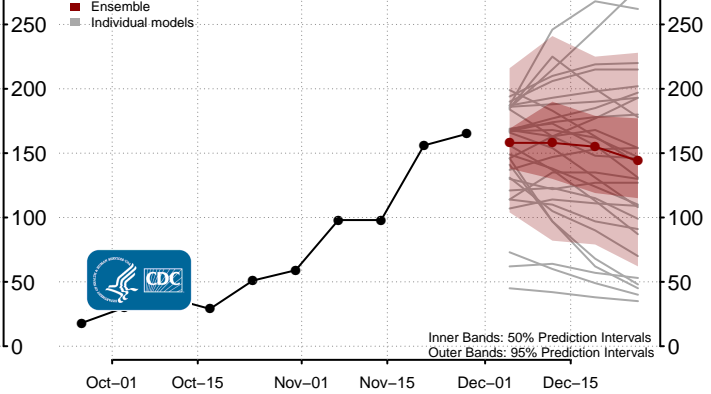
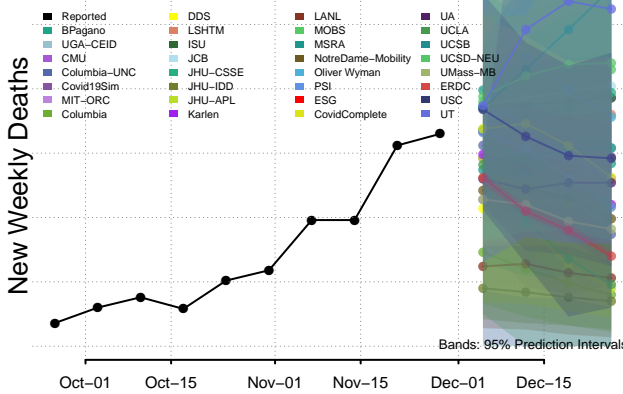
Rhode Island



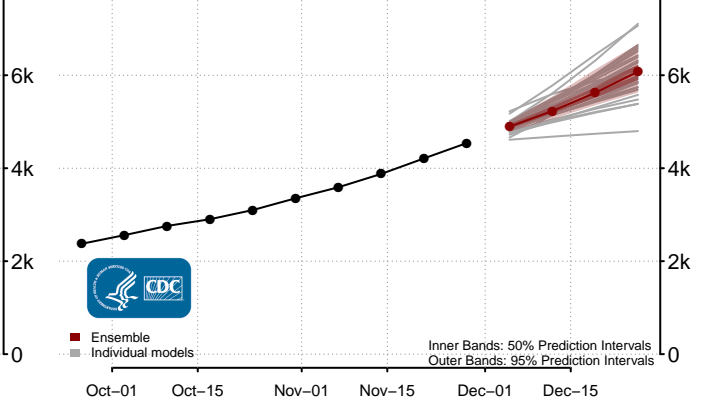
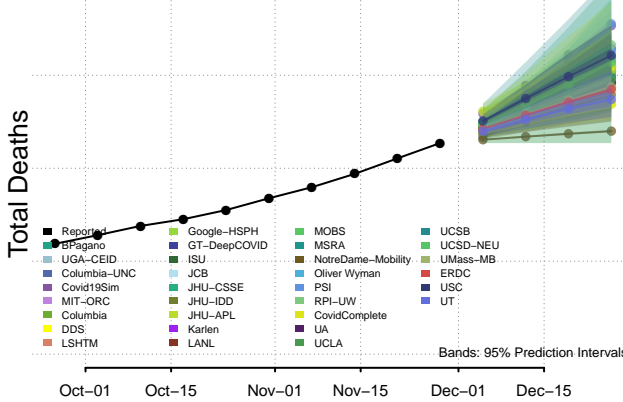
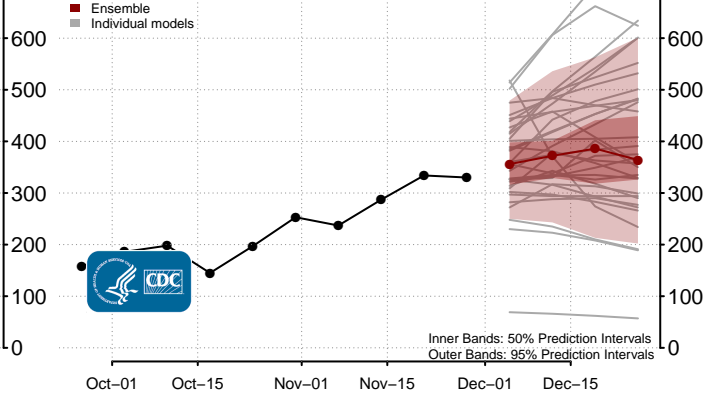
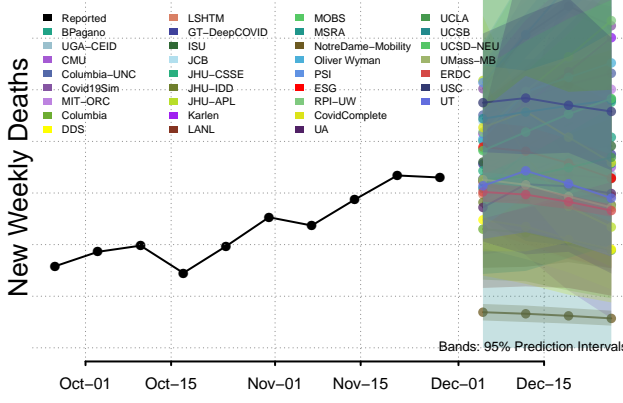
South Carolina



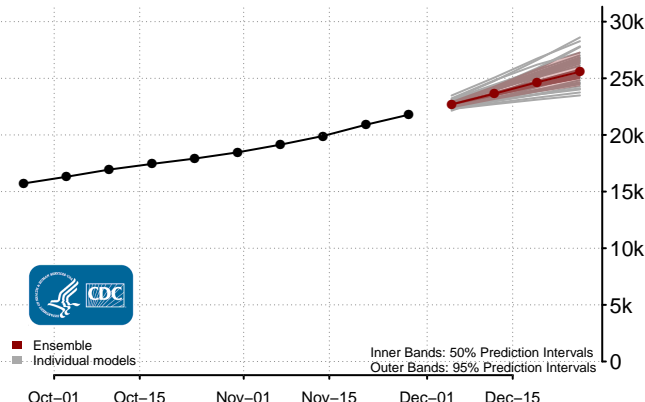
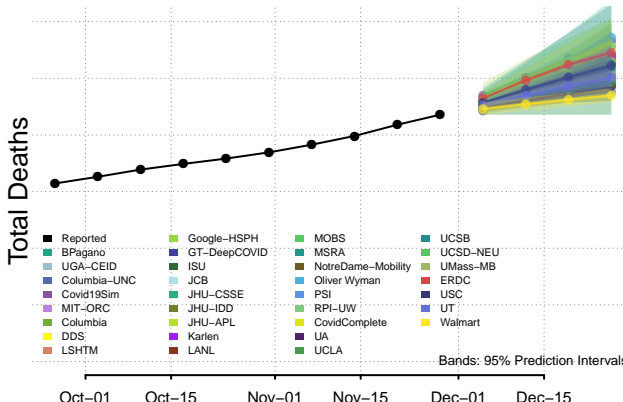
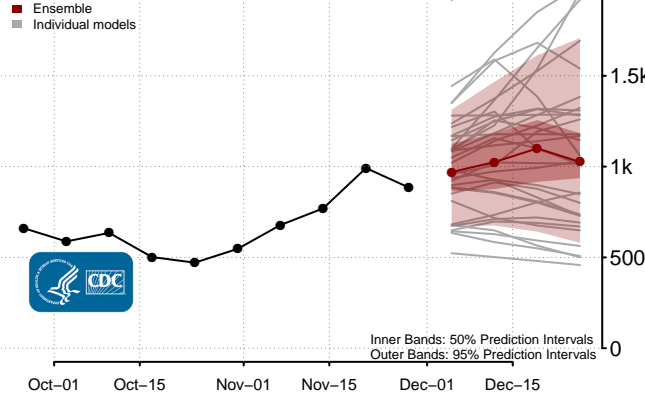
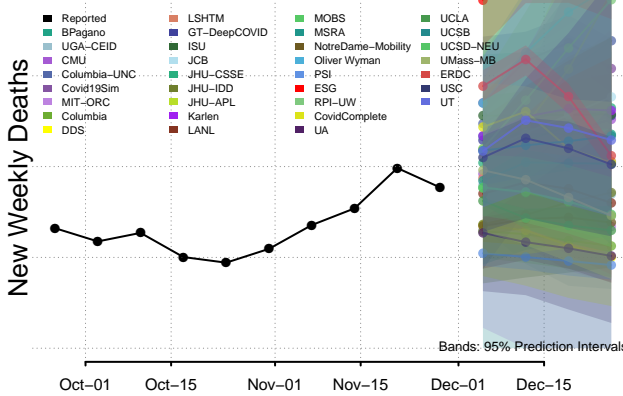
South Dakota



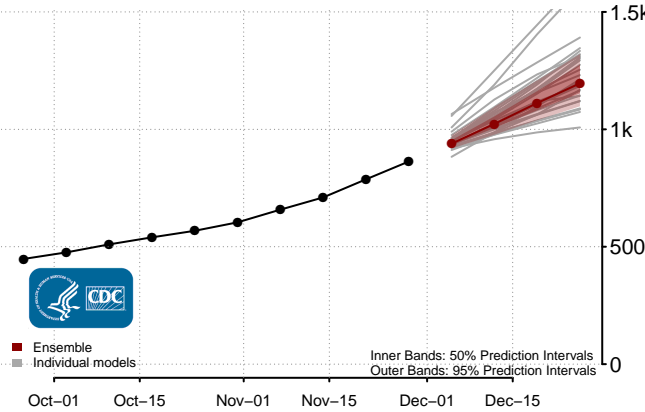
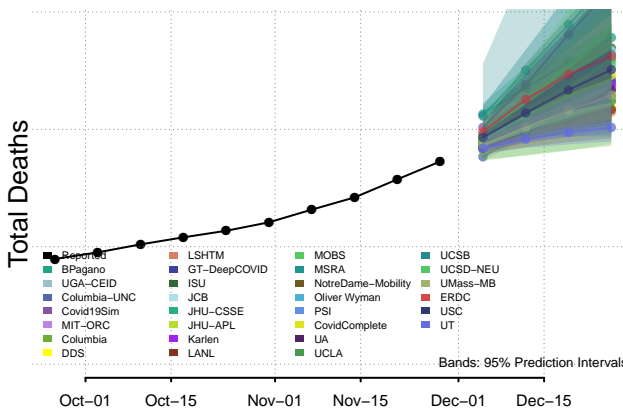
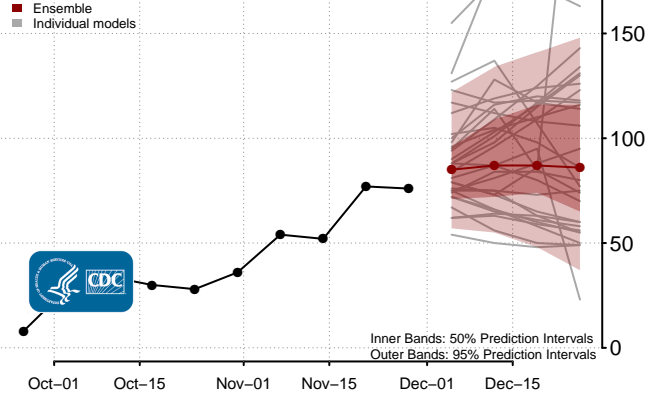
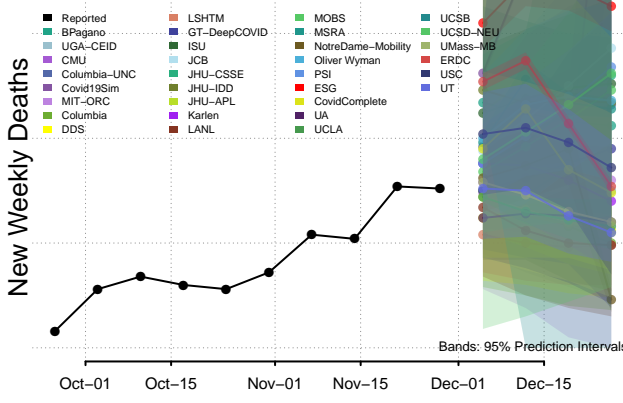
Tennessee



Texas**

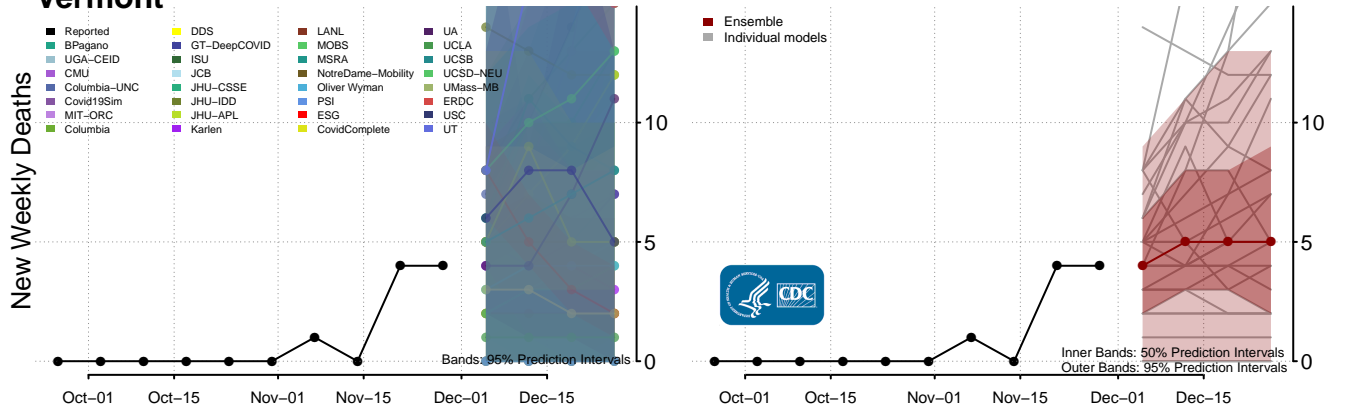


Utah

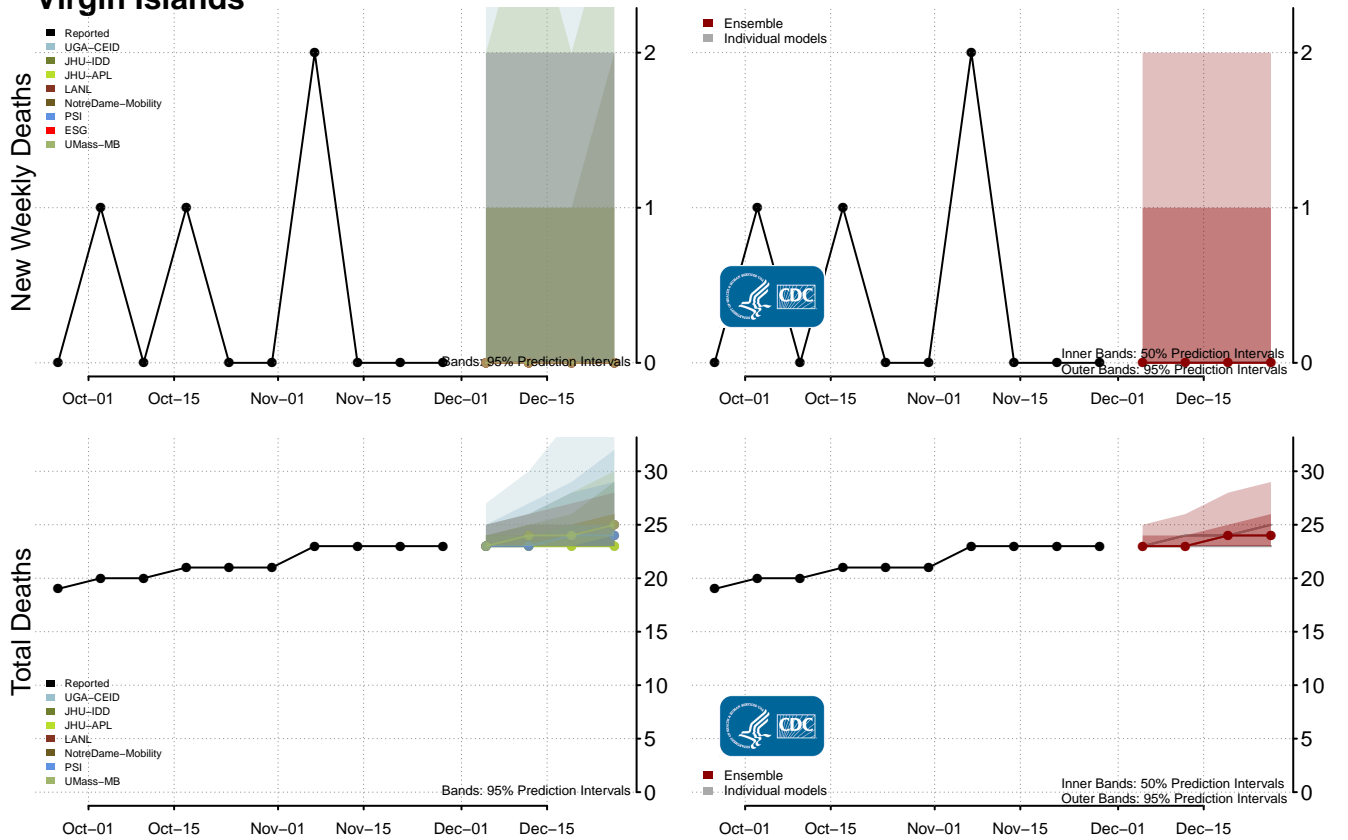


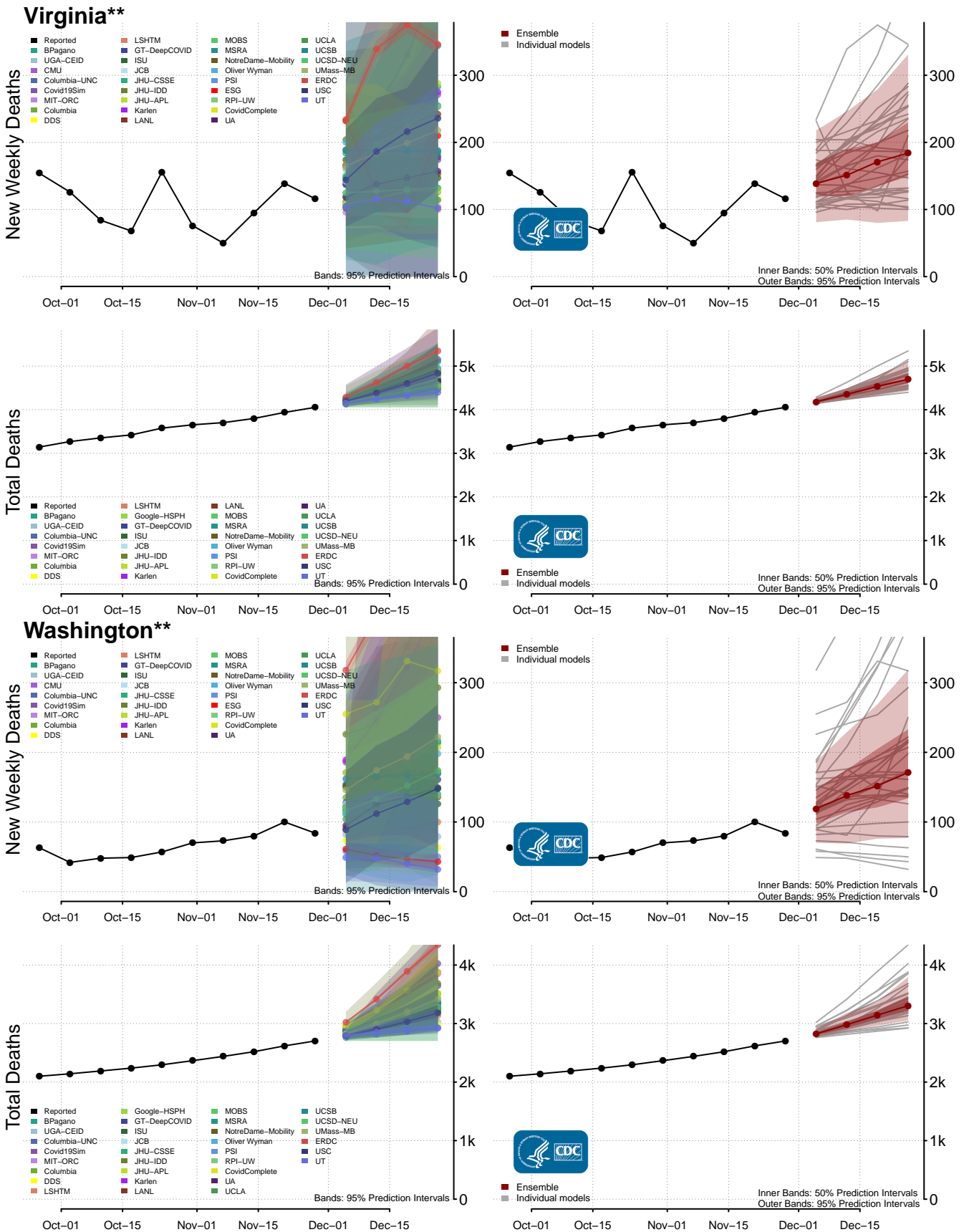
**New weekly deaths may increase in this location over the next four weeks. For these locations, the ensemble forecast indicates a probability of 0.75 or greater that more deaths will be reported in week four of the forecast than in the last reported week.

Vermont



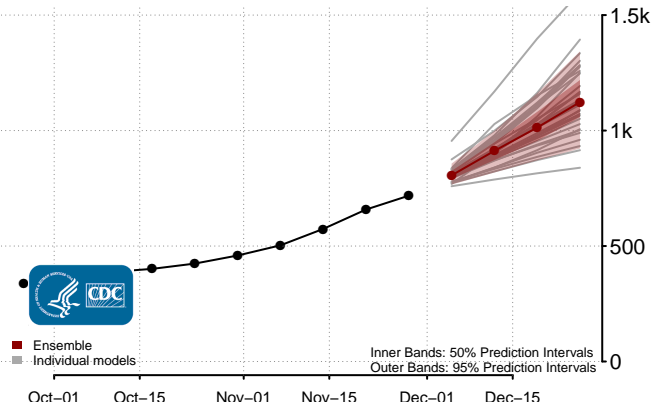
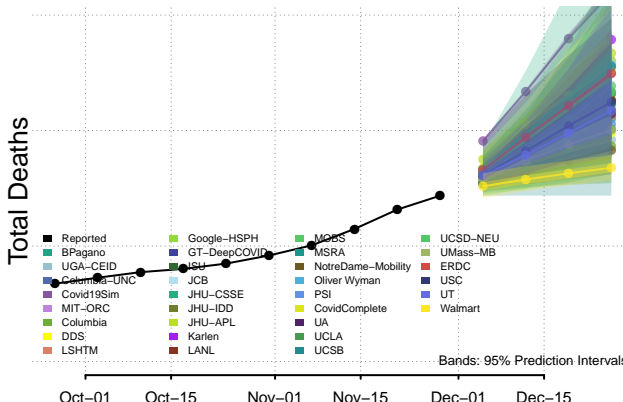
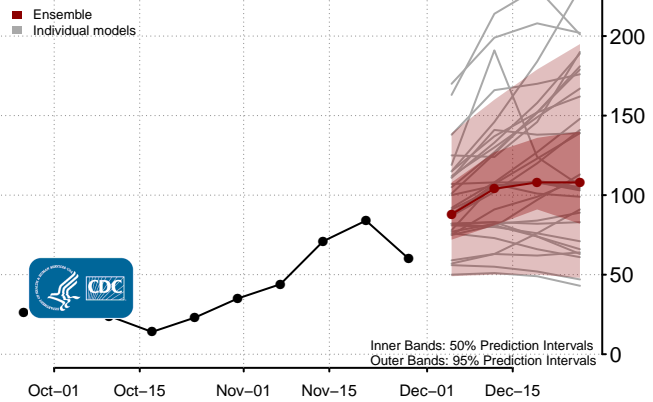
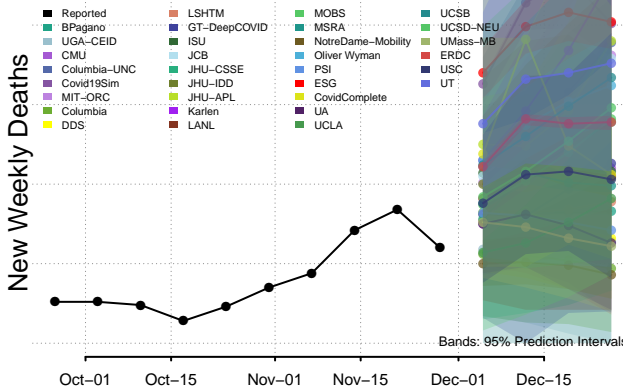
Virgin Islands



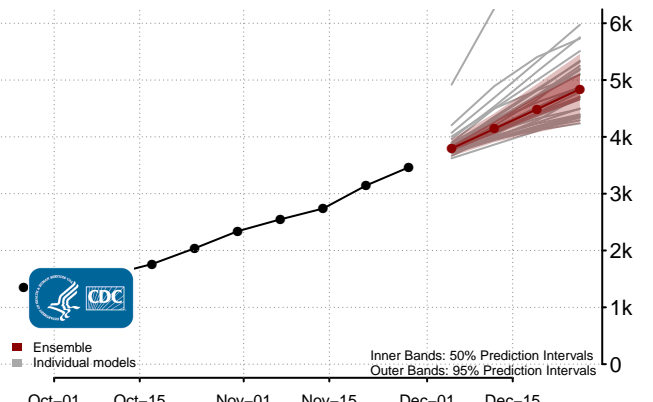
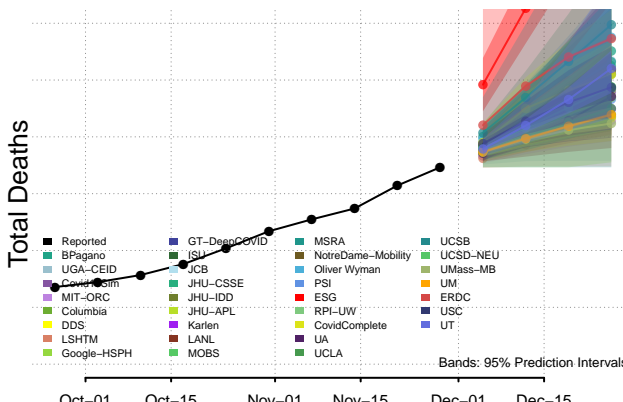
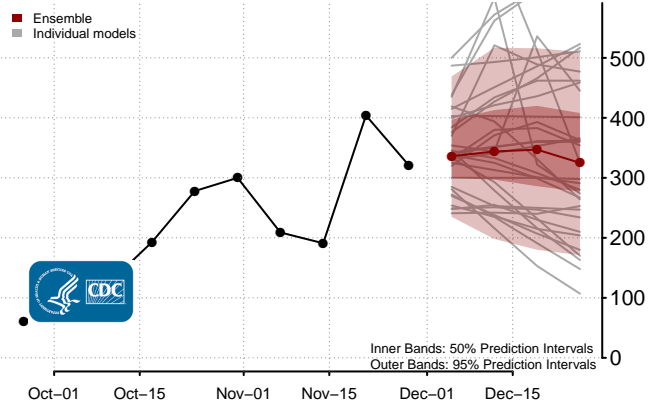
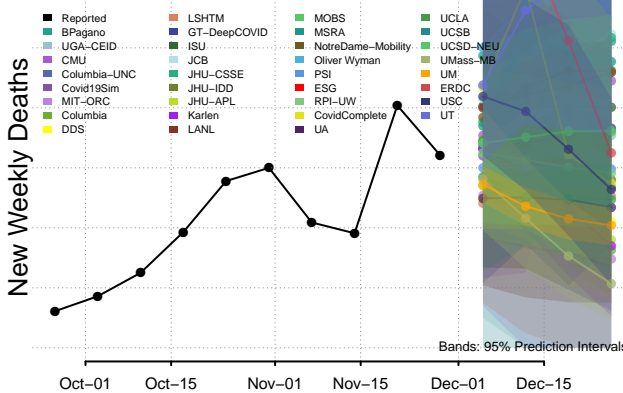


**New weekly deaths may increase in this location over the next four weeks. For these locations, the ensemble forecast indicates a probability of 0.75 or greater that more deaths will be reported in week four of the forecast than in the last reported week.

West Virginia



Wisconsin



Wyoming

