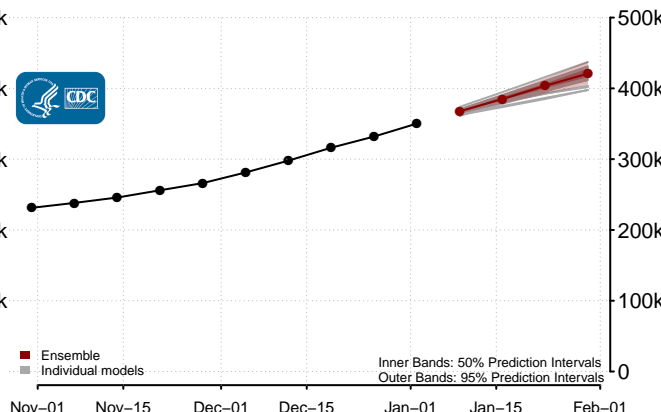
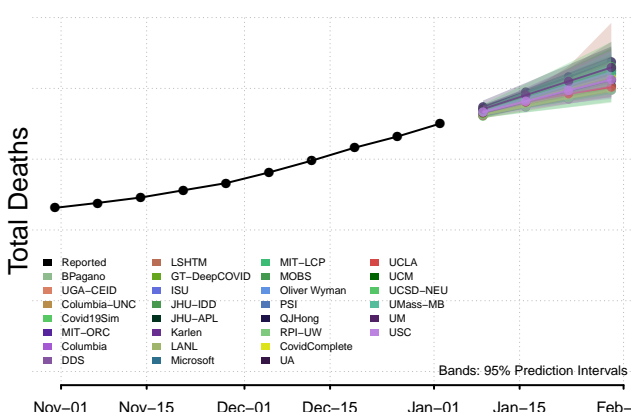
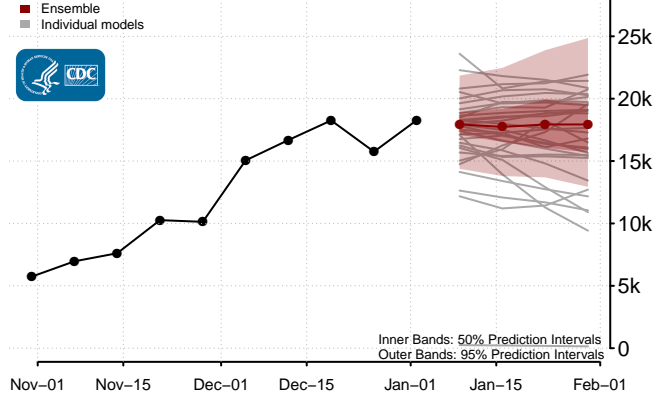
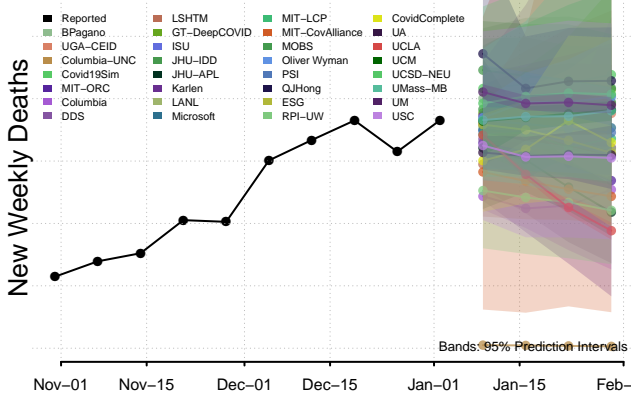
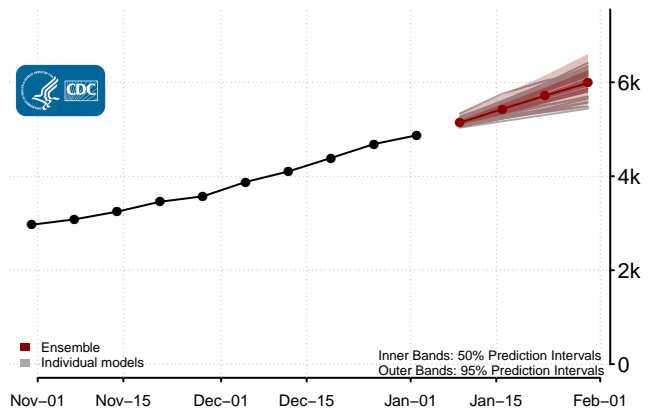
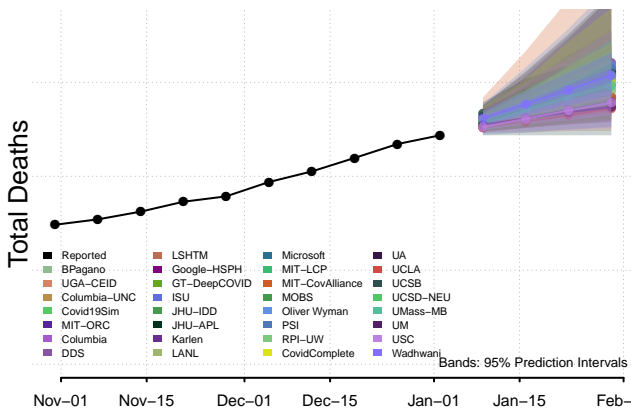
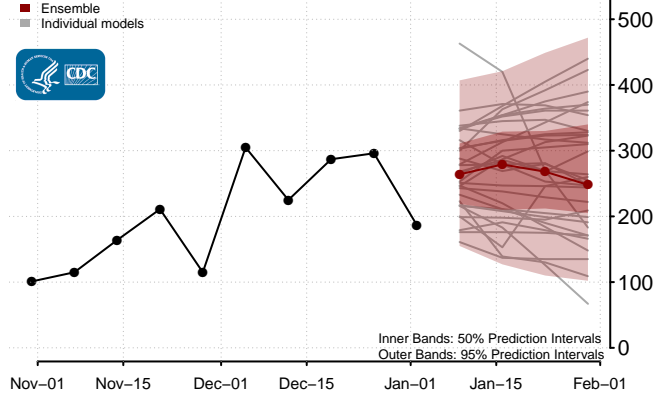
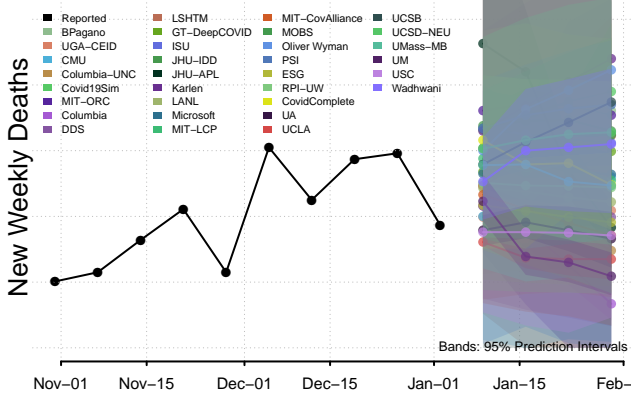
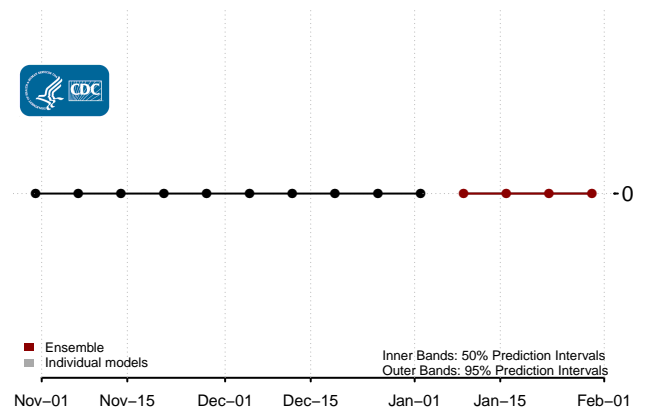
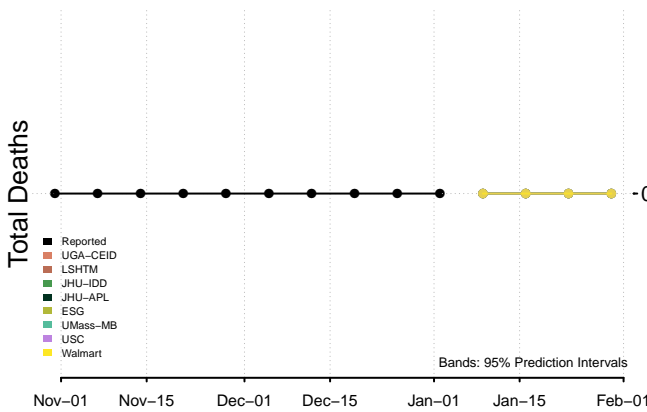
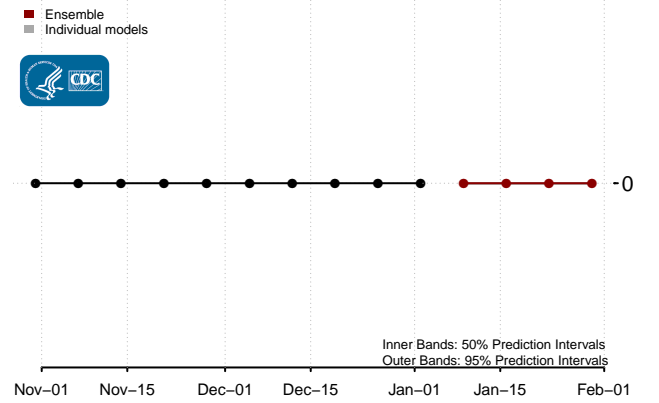
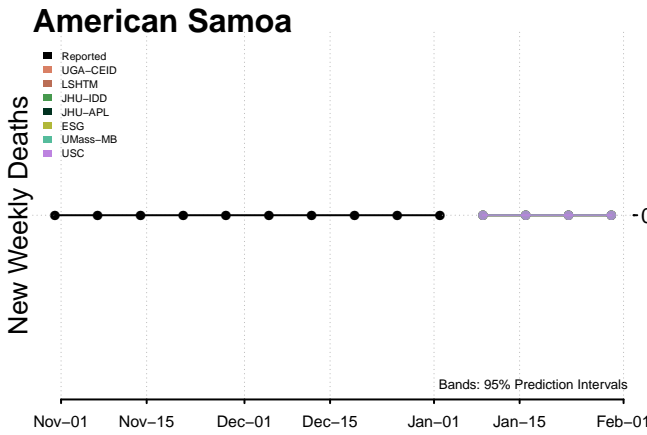
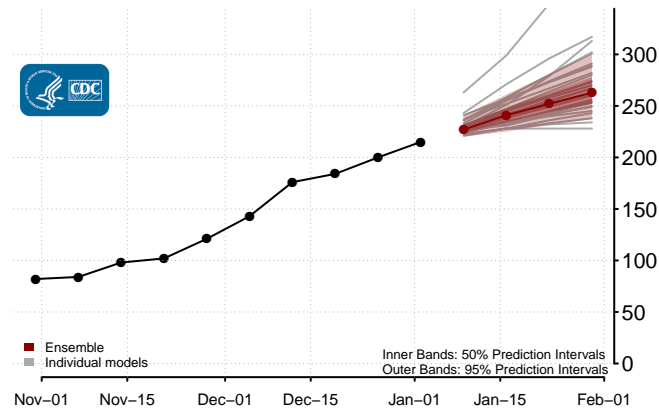
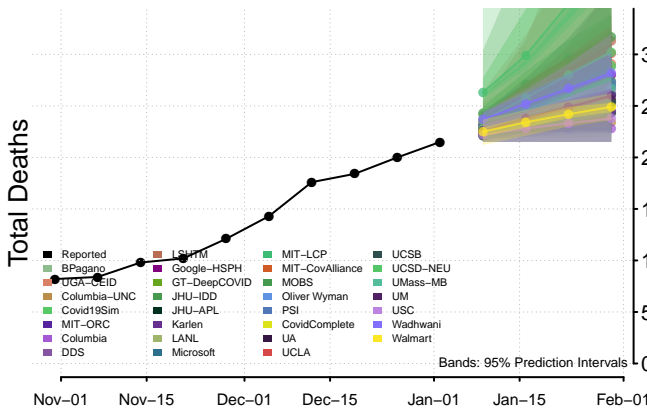
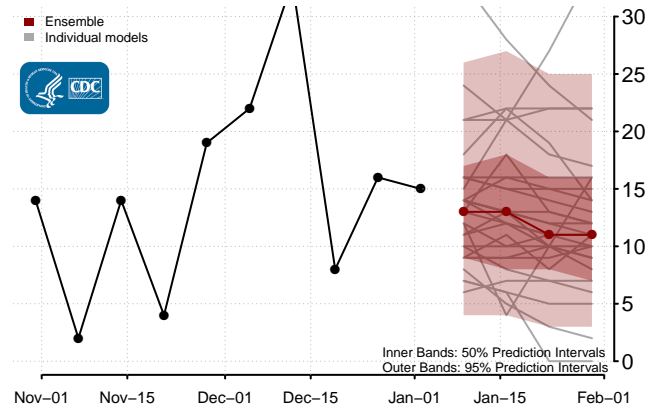
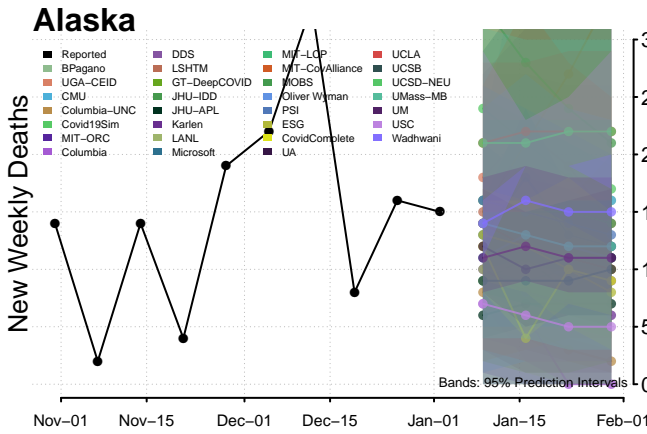


National

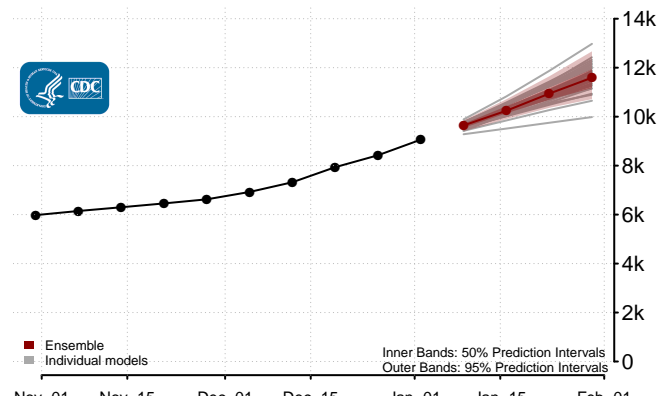
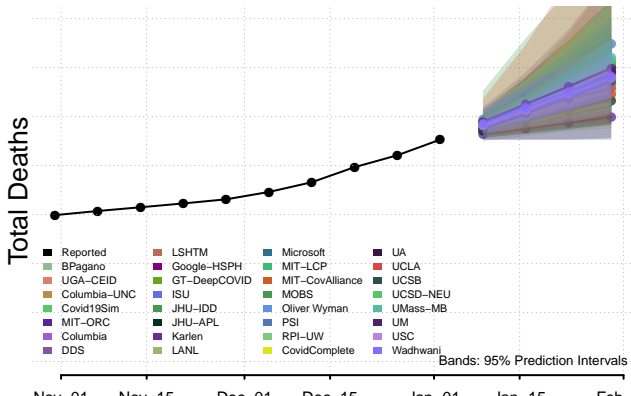
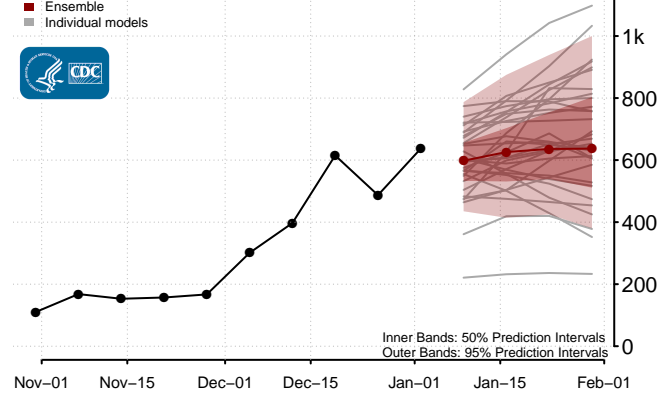
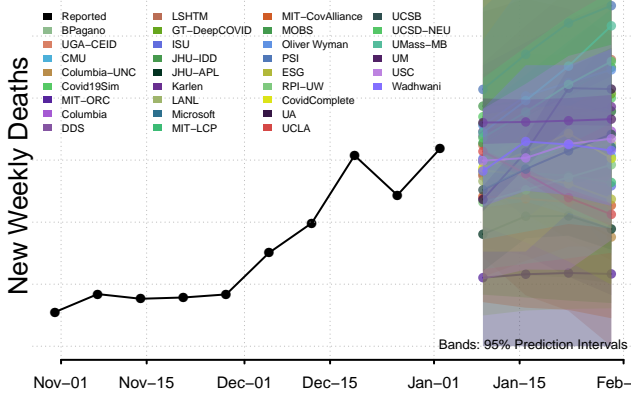


Alabama

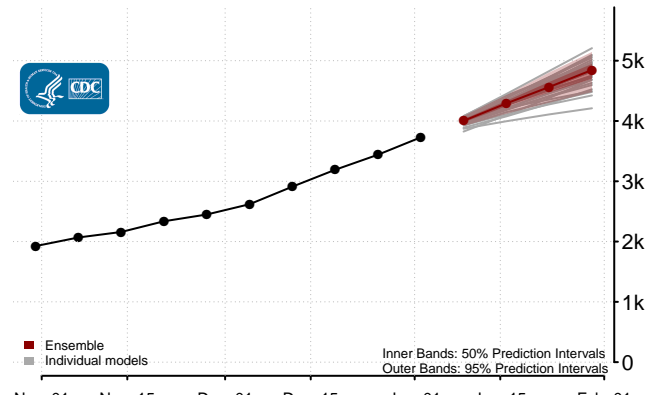
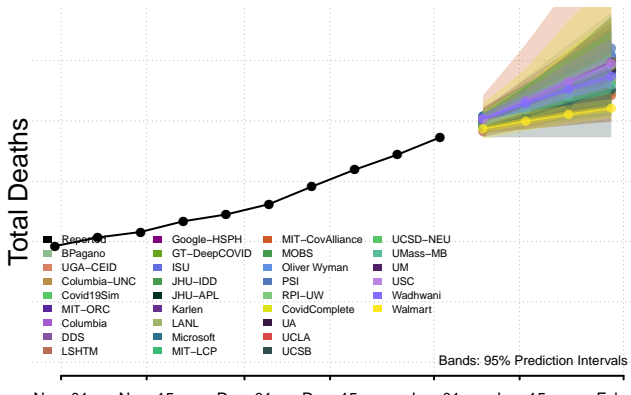
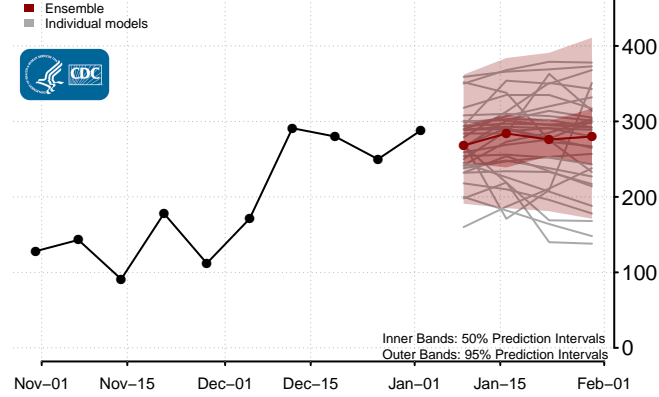
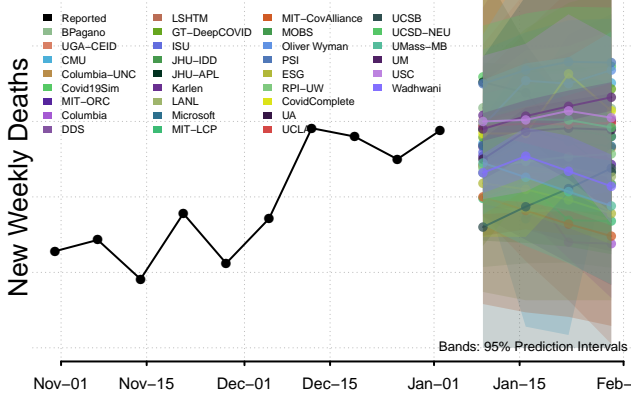




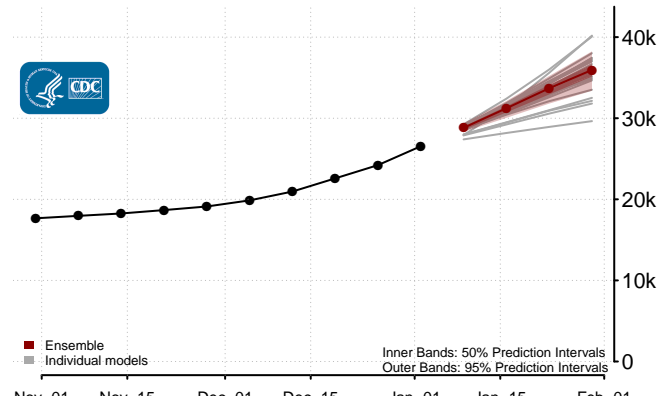
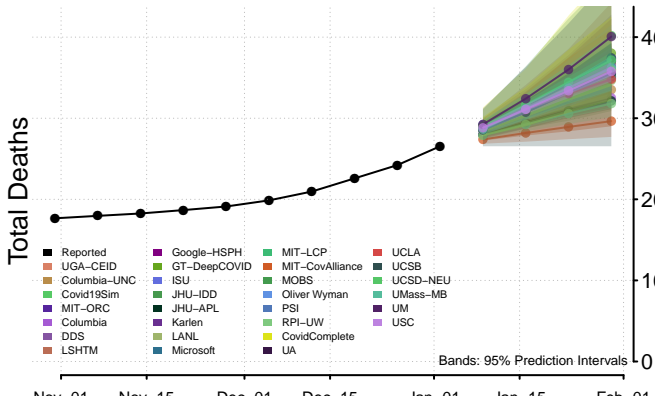
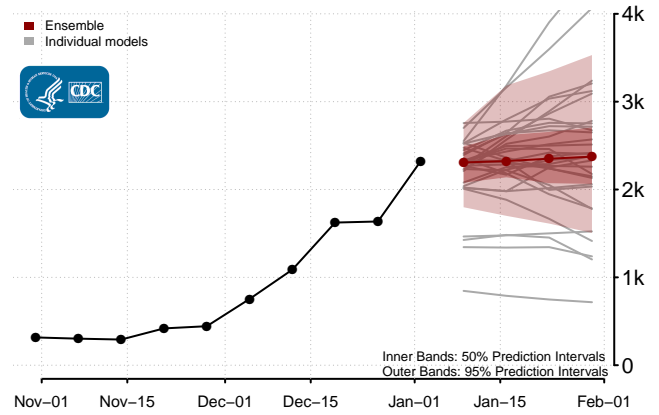
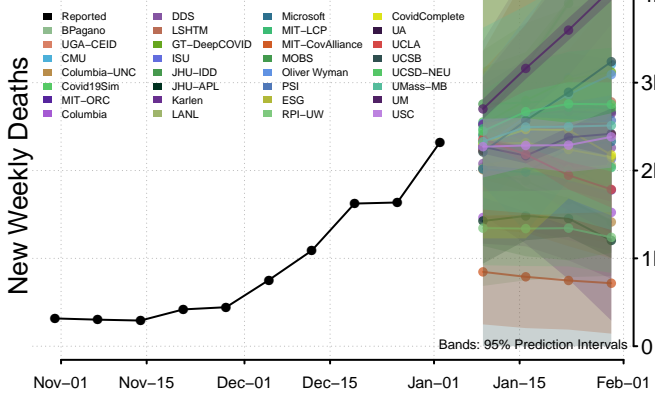
Arizona



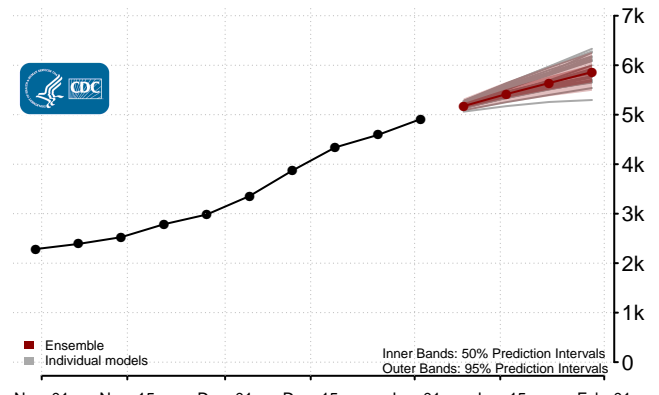
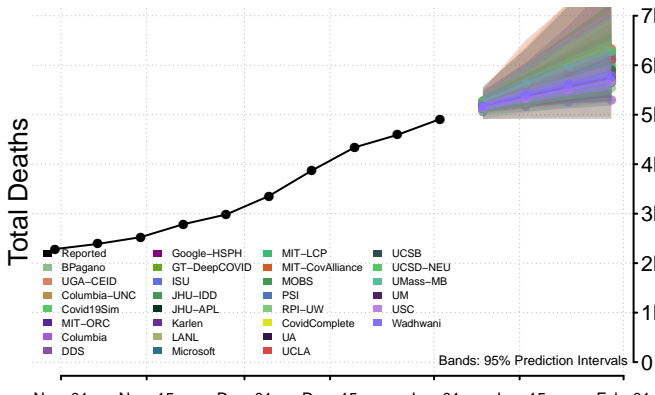
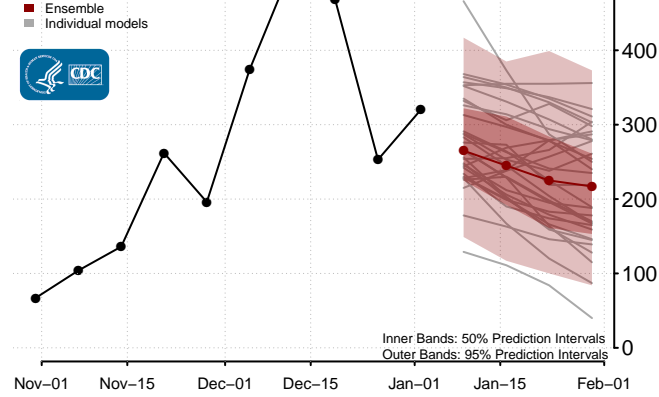
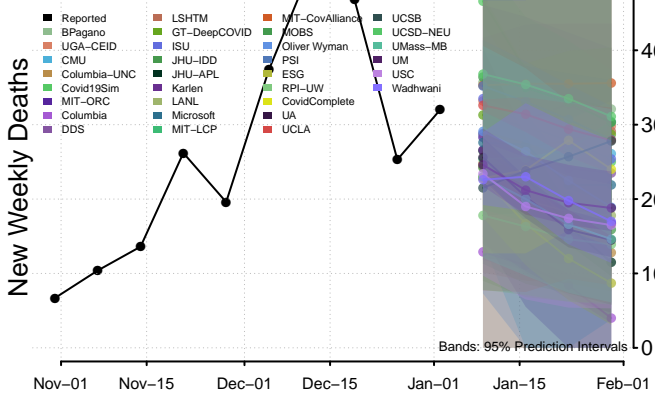
Arkansas



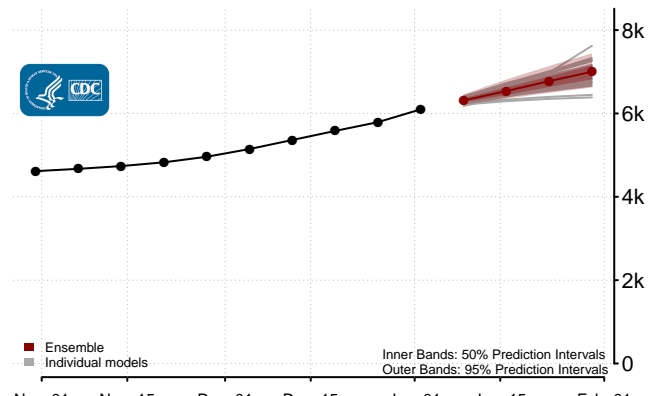
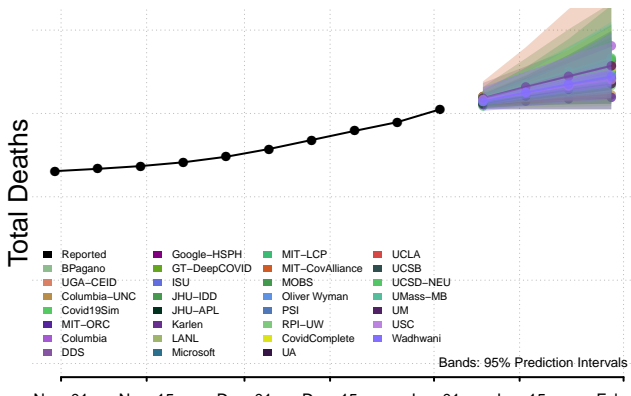
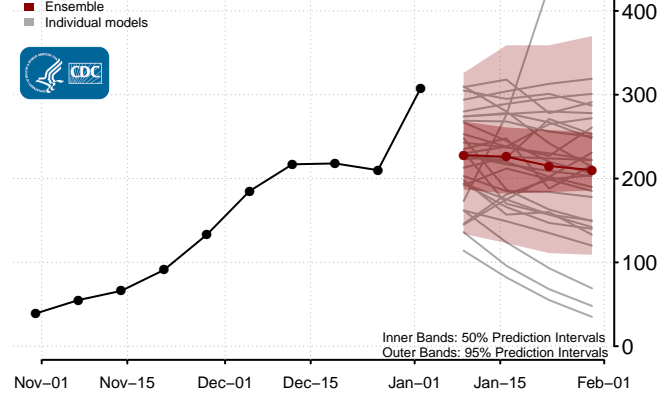
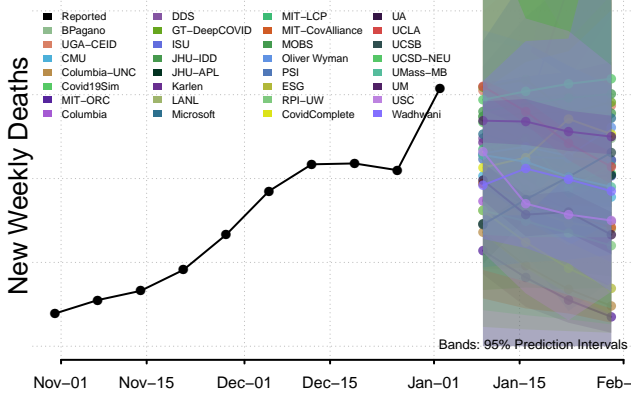
California



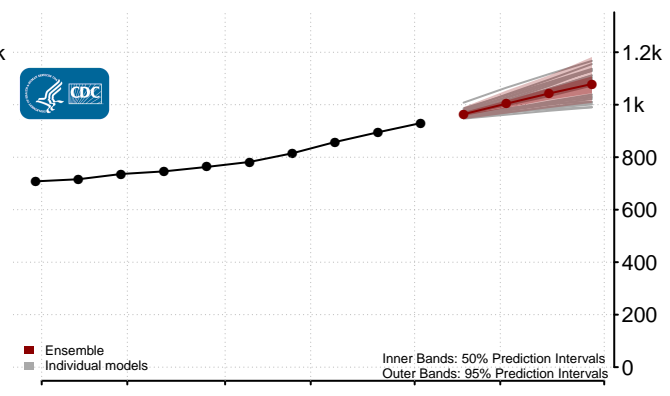
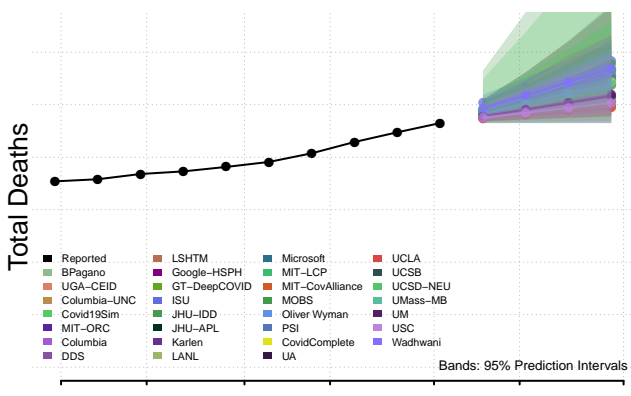
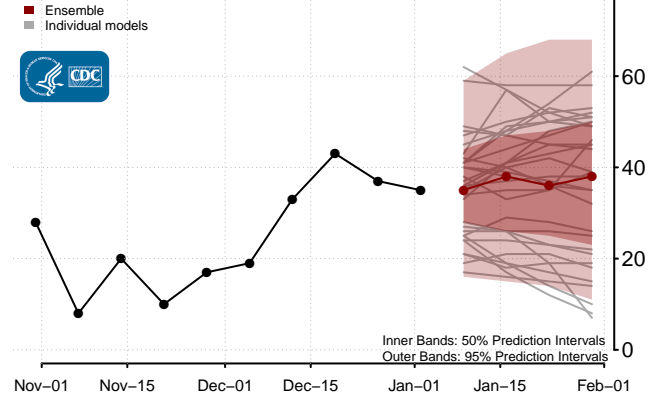
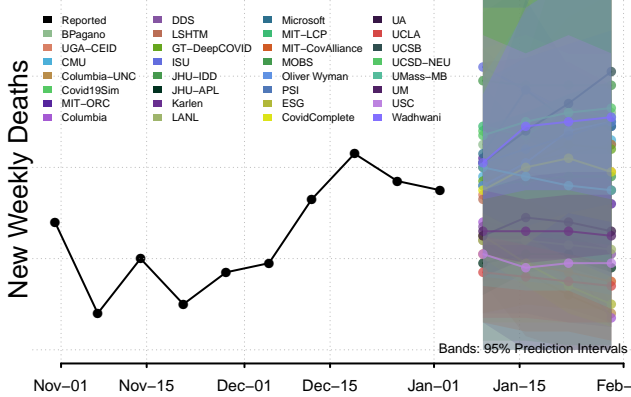
Colorado



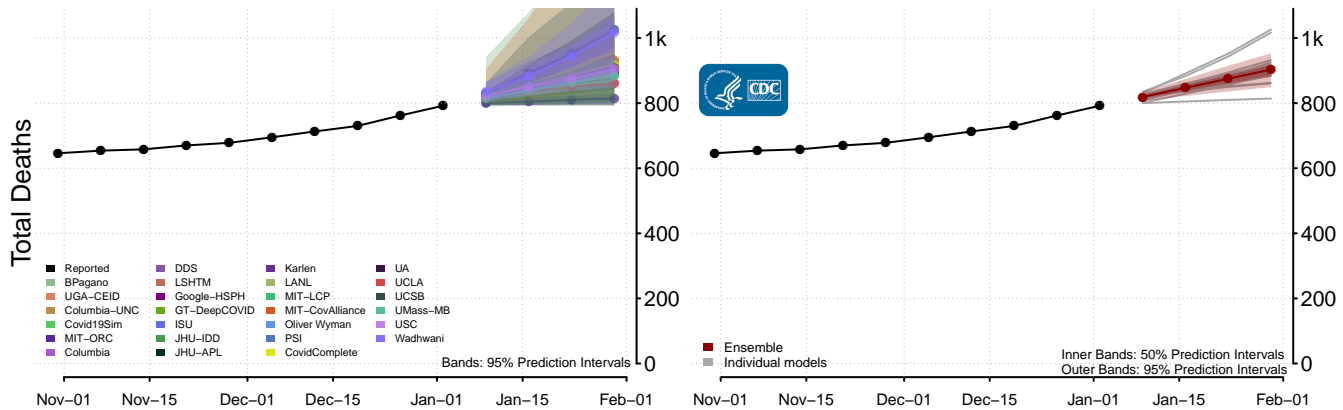
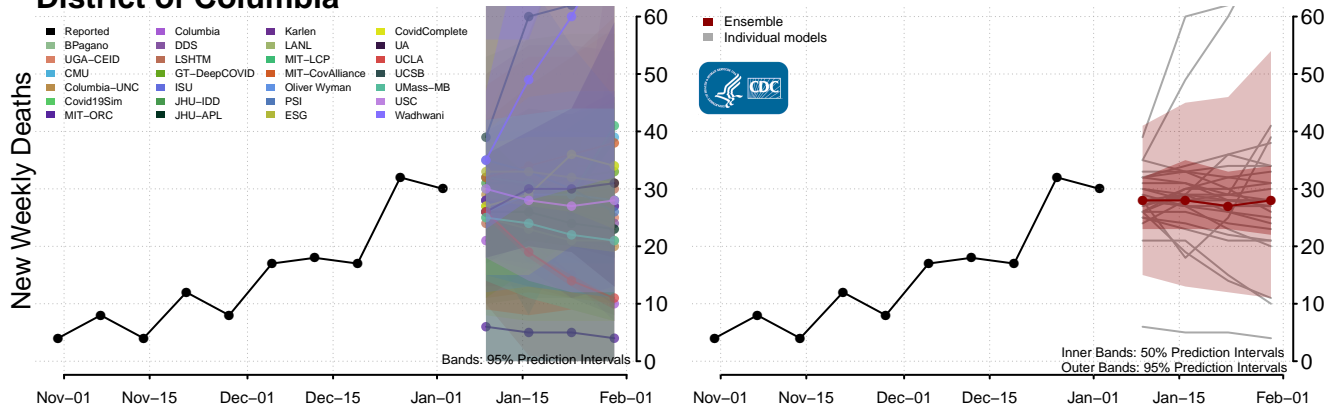
Connecticut



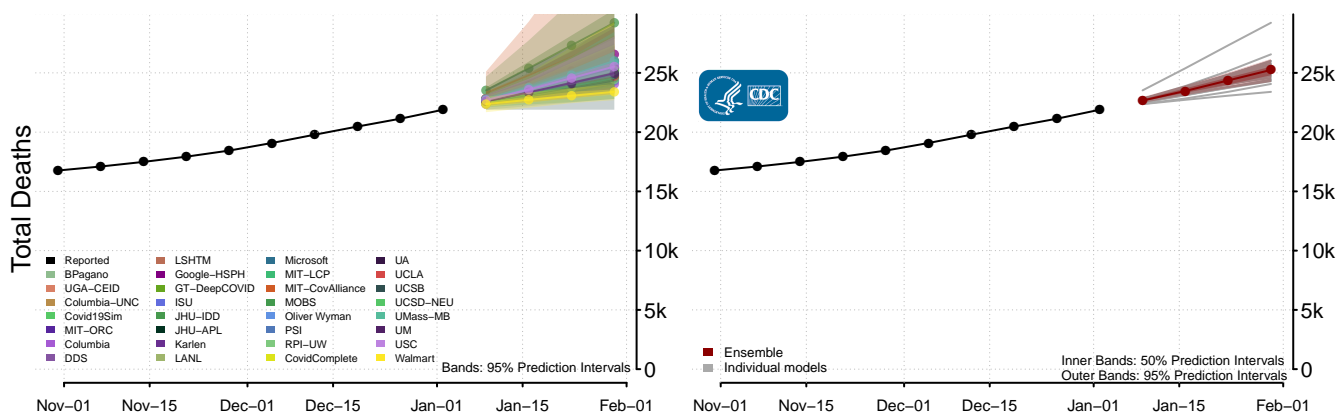
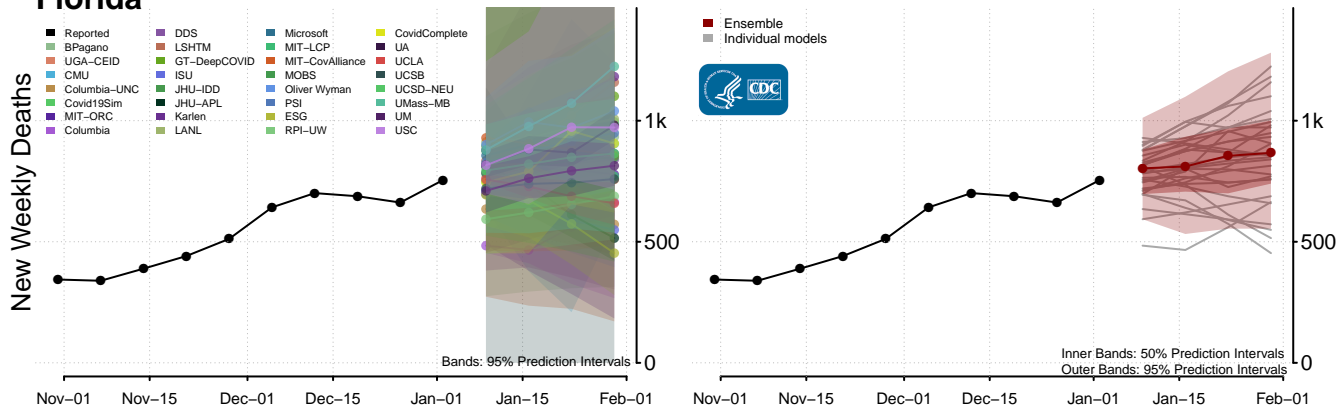
Delaware

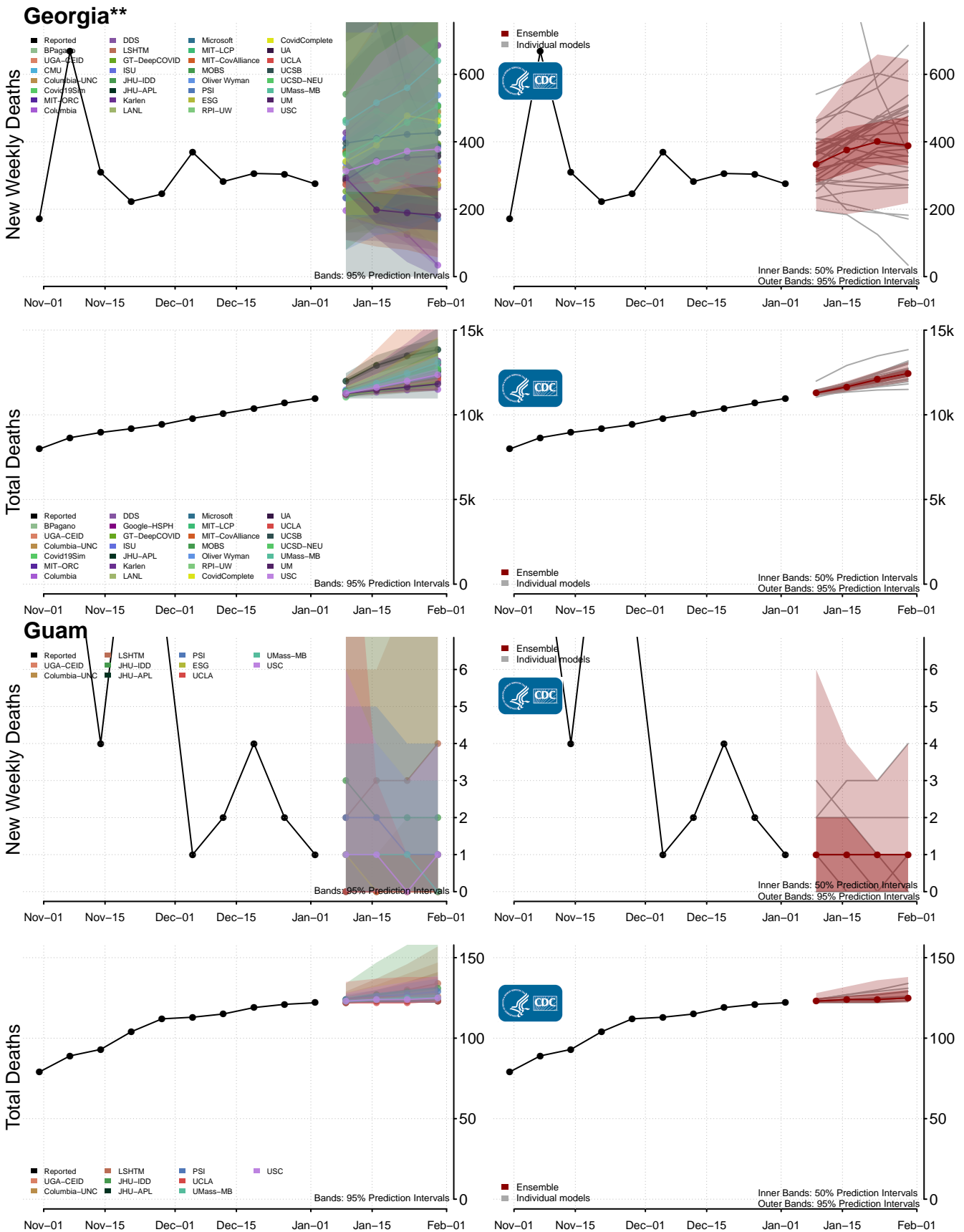


District of Columbia



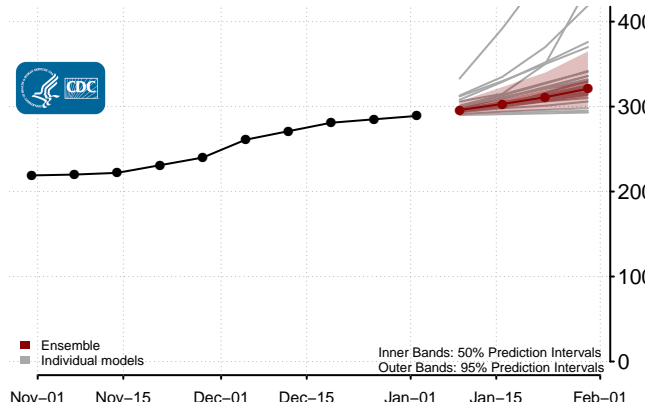
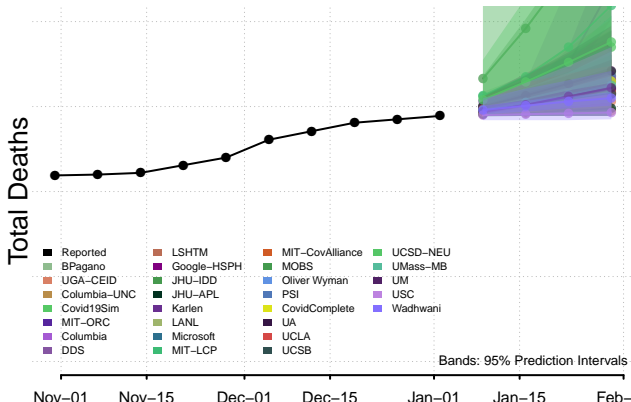
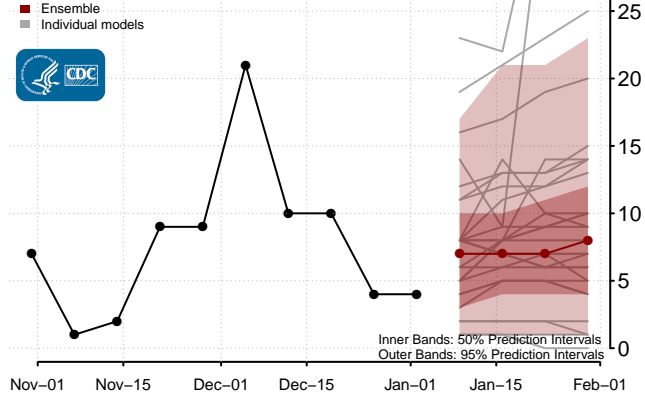
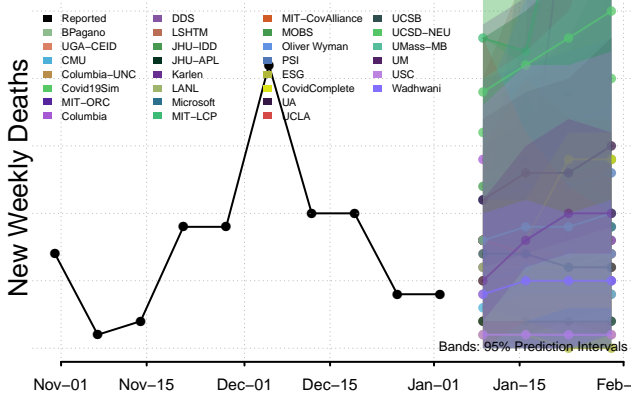
Florida



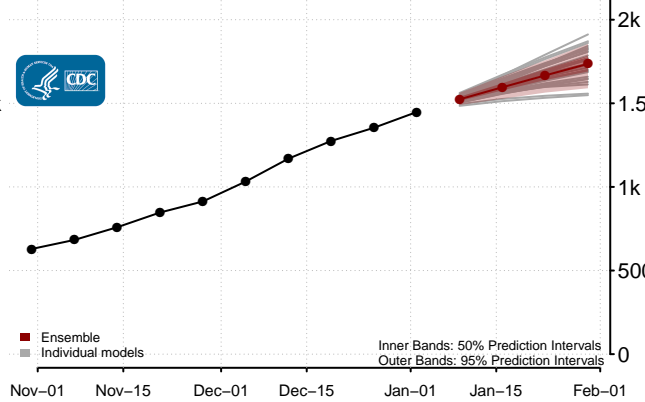
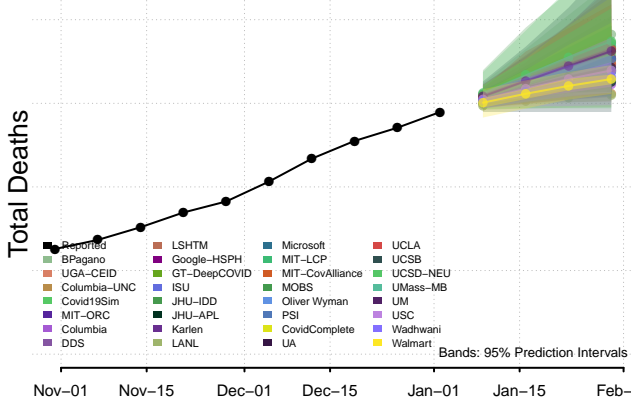
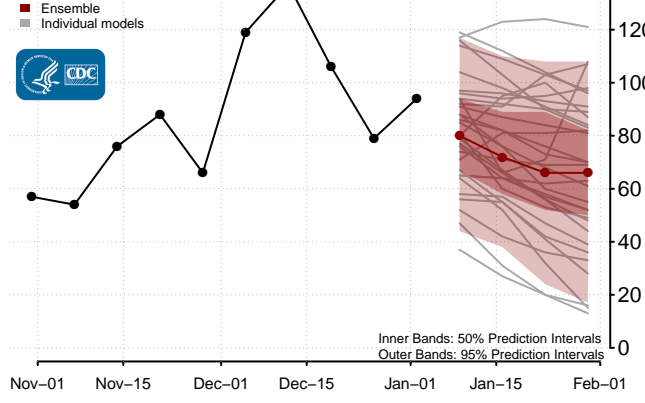
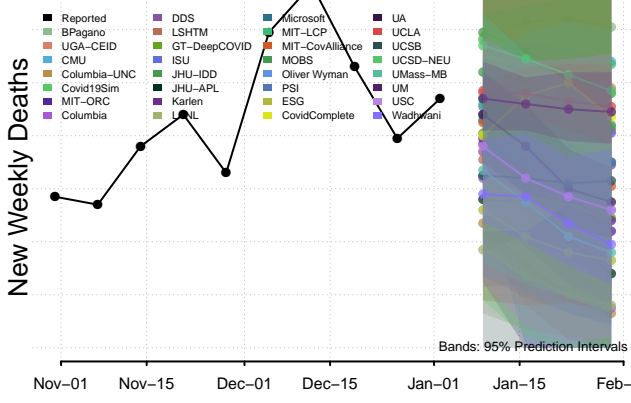


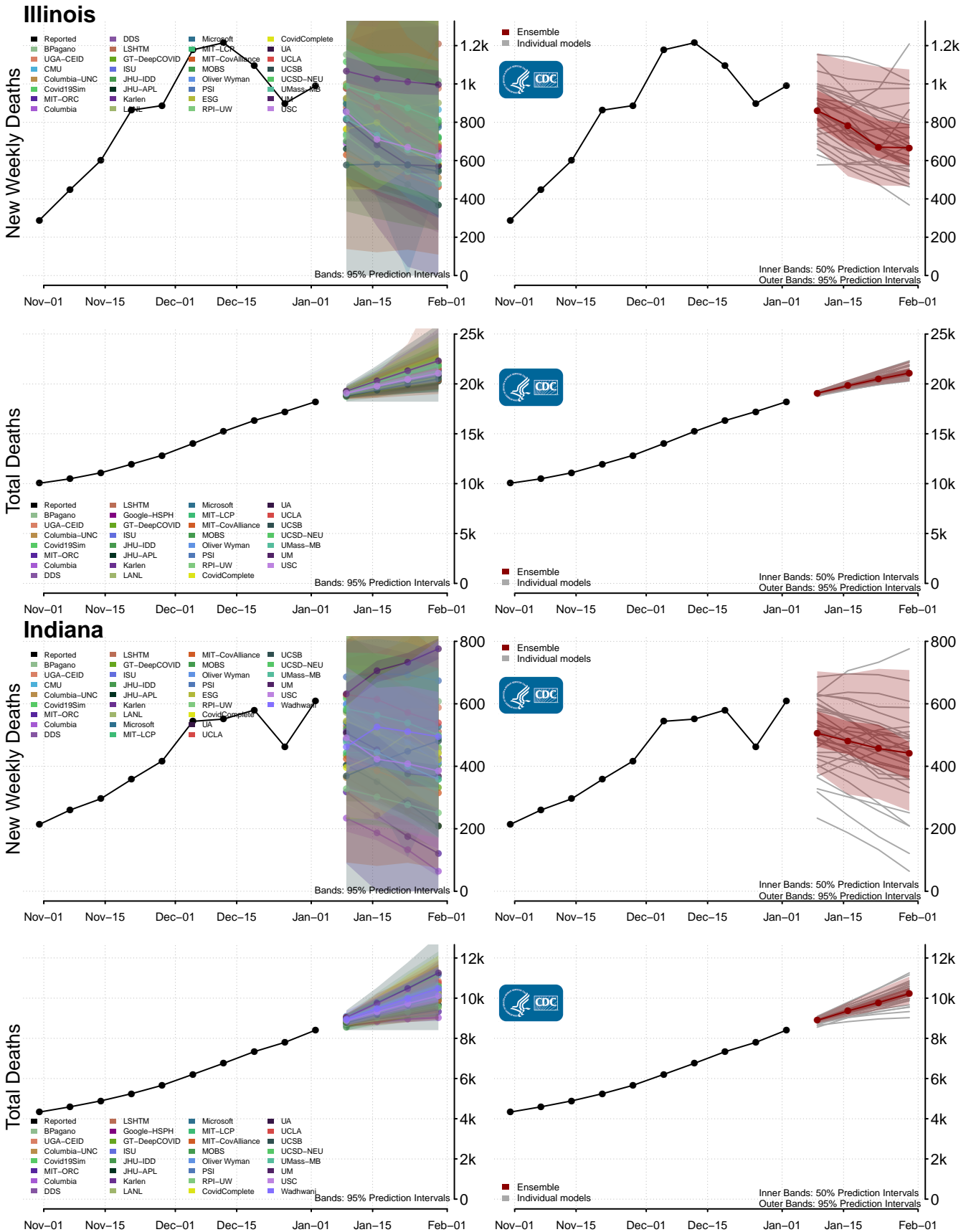
**New weekly deaths may increase in this location over the next four weeks. For these locations, the ensemble forecast indicates a probability of 0.75 or greater that more deaths will be reported in week four of the forecast than in the last reported week.

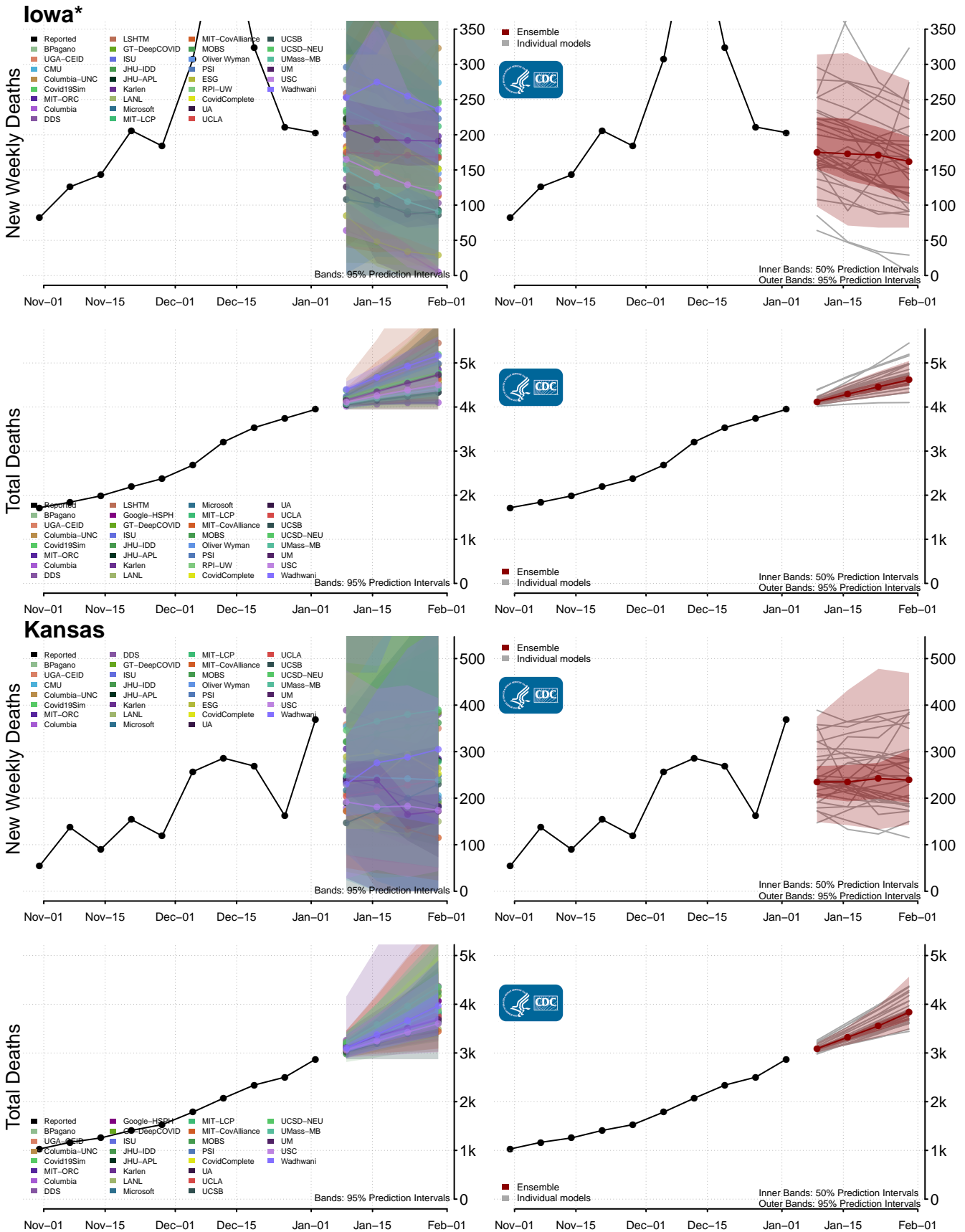
Hawaii



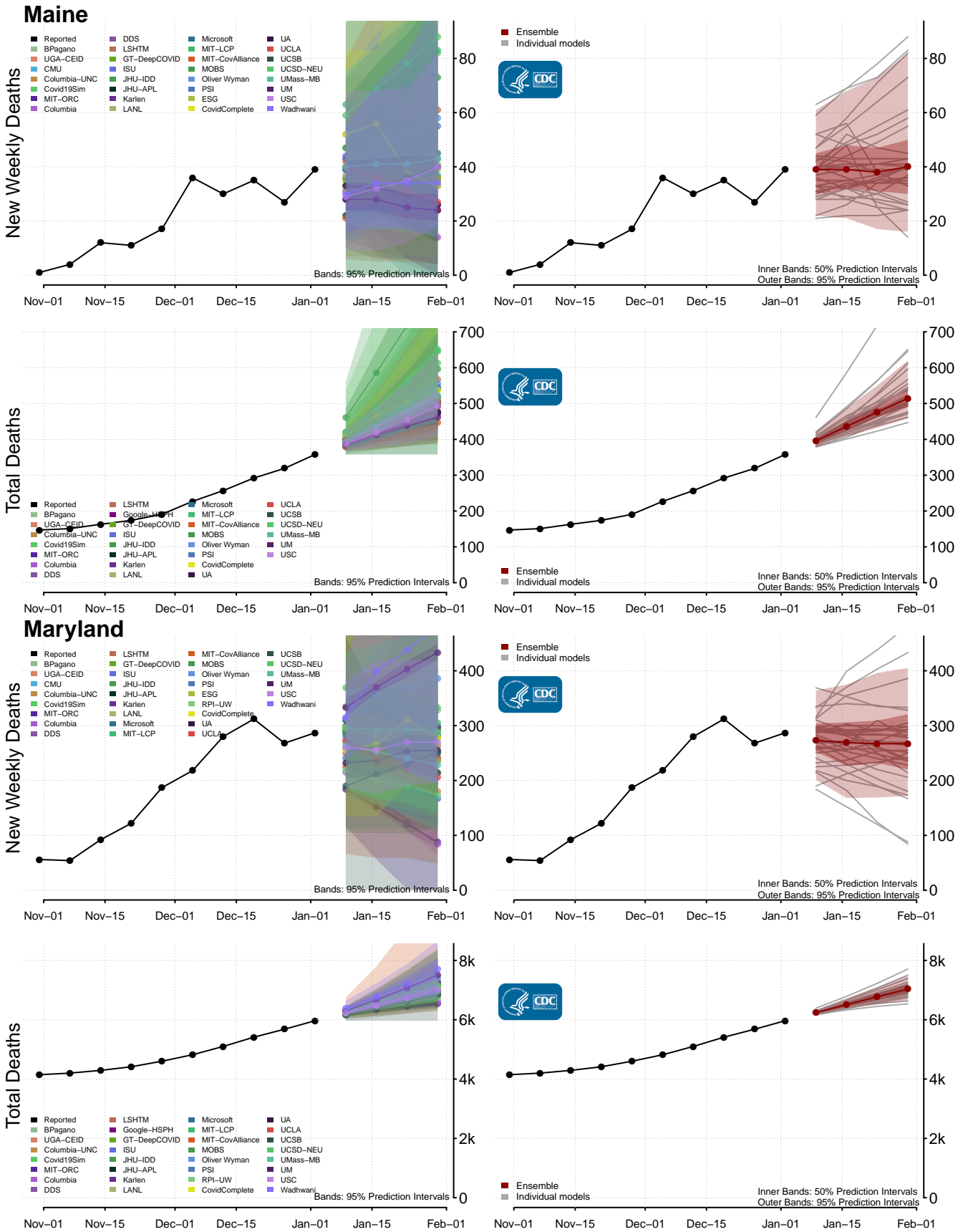
Idaho



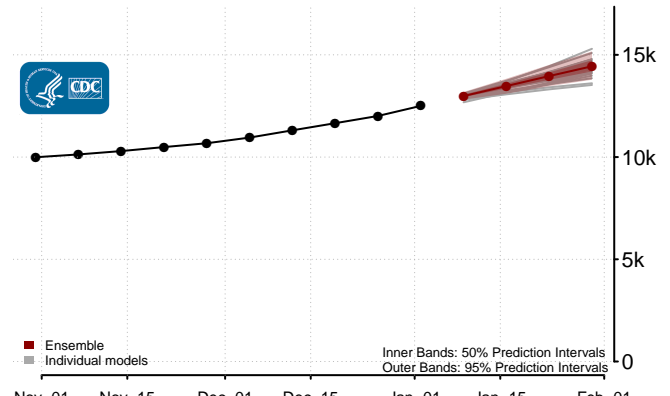
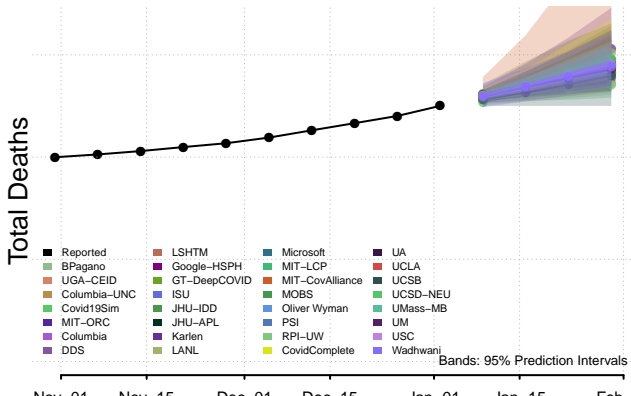
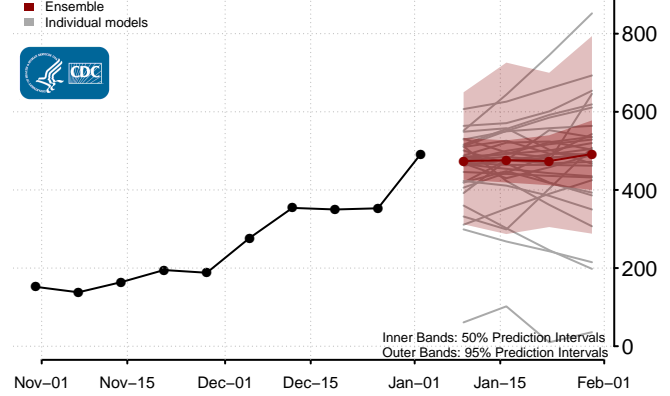
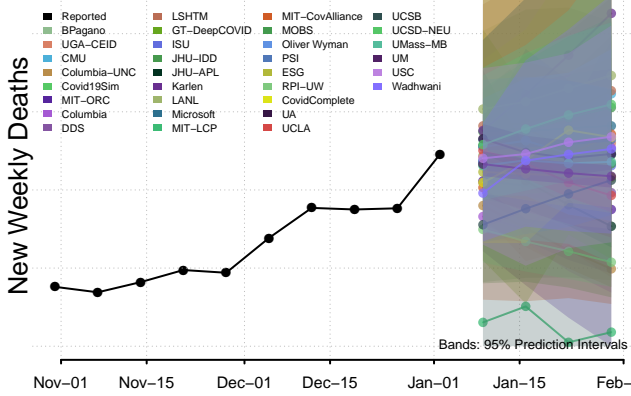




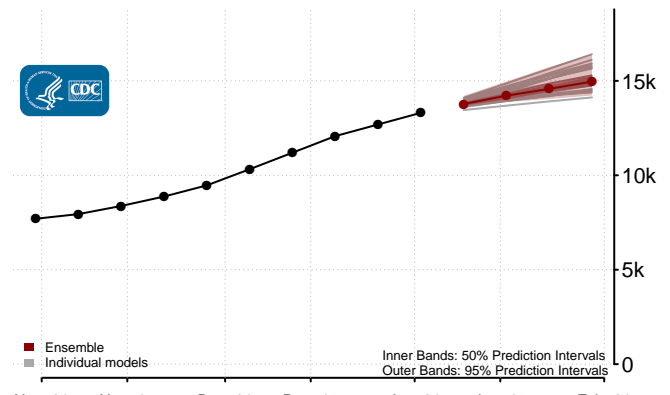
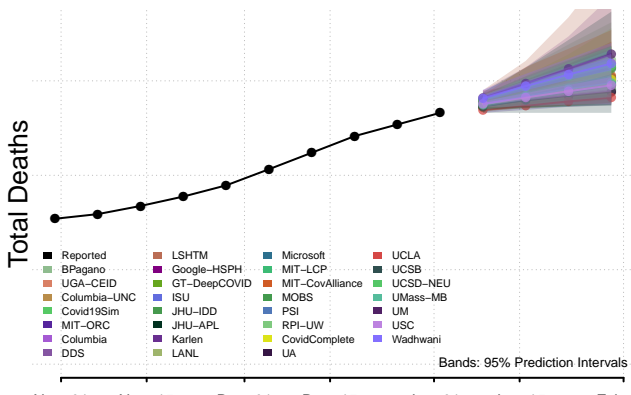
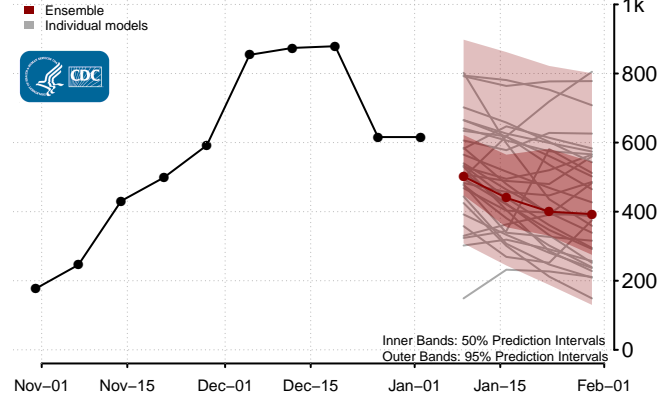
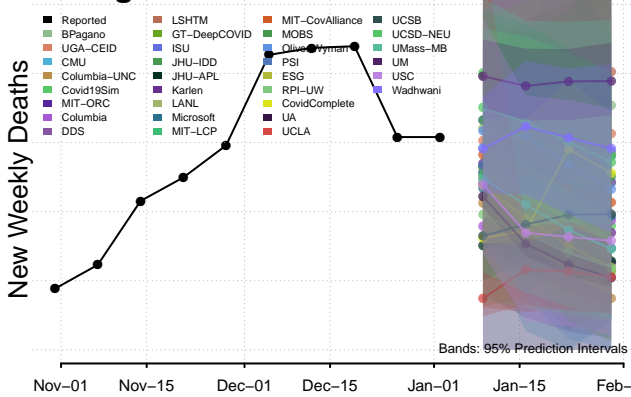
*New weekly deaths may decrease in this location over the next four weeks. For these locations, the ensemble forecast indicates a probability of 0.75 or greater that fewer deaths will be reported in week four of the forecast than in the last reported week.

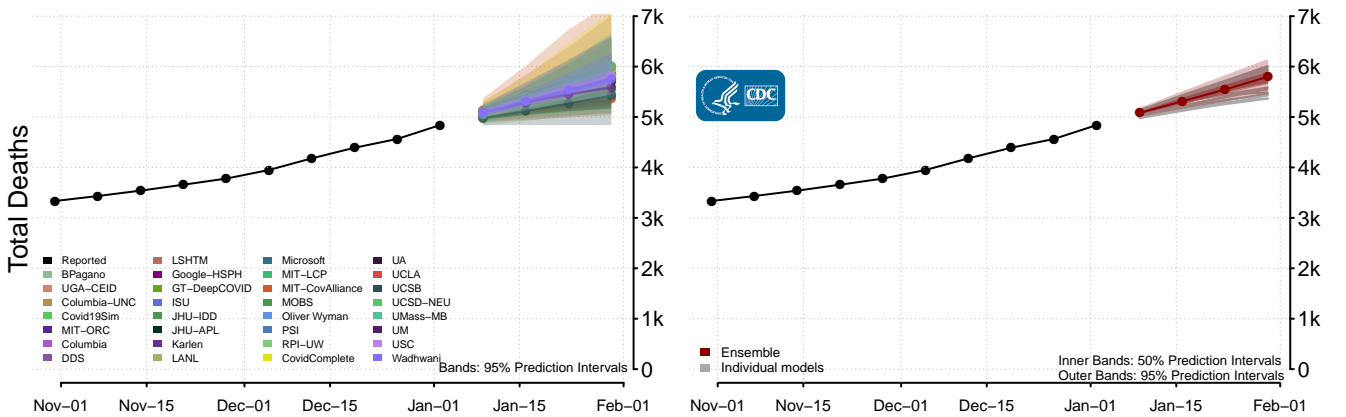
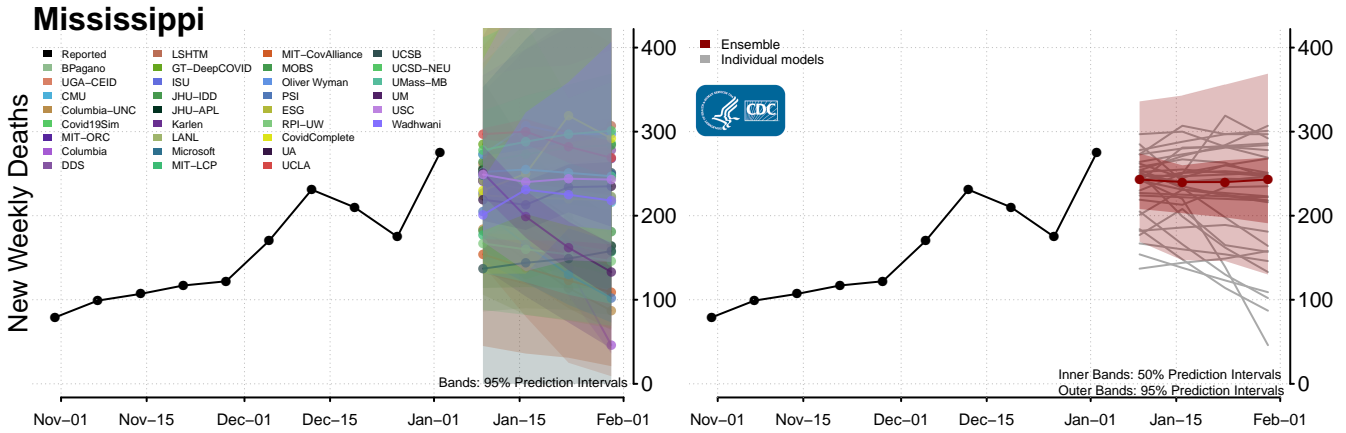
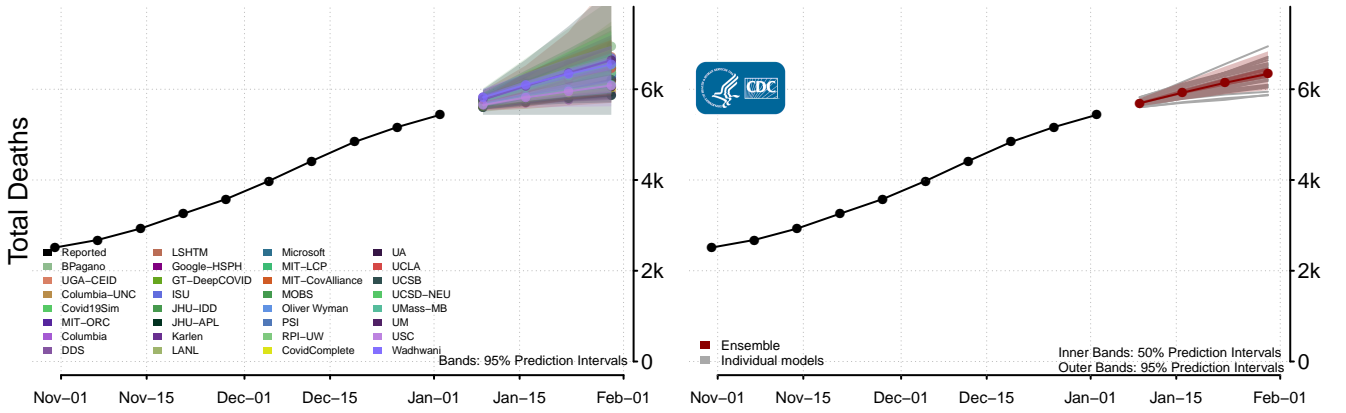
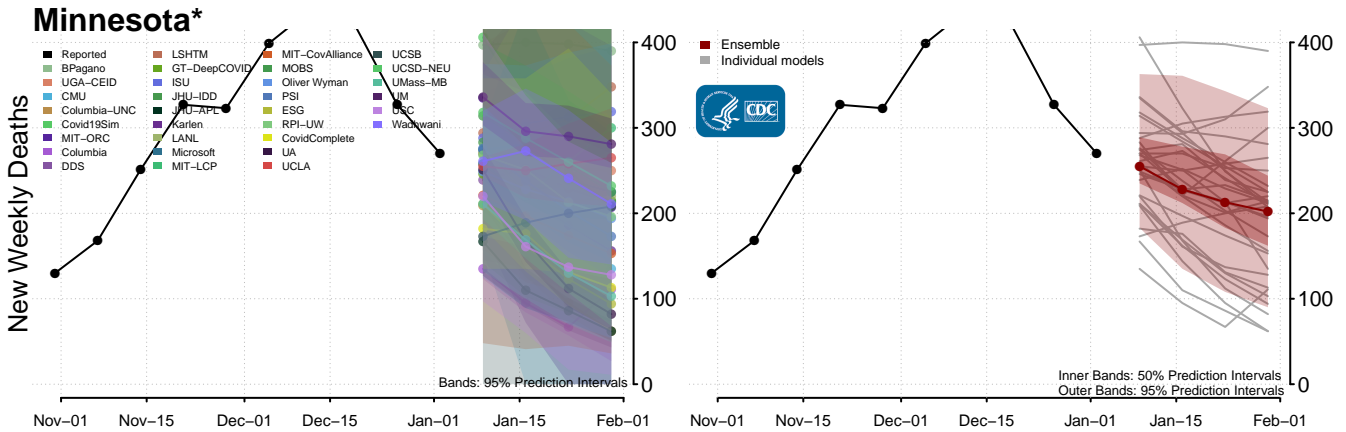


Massachusetts

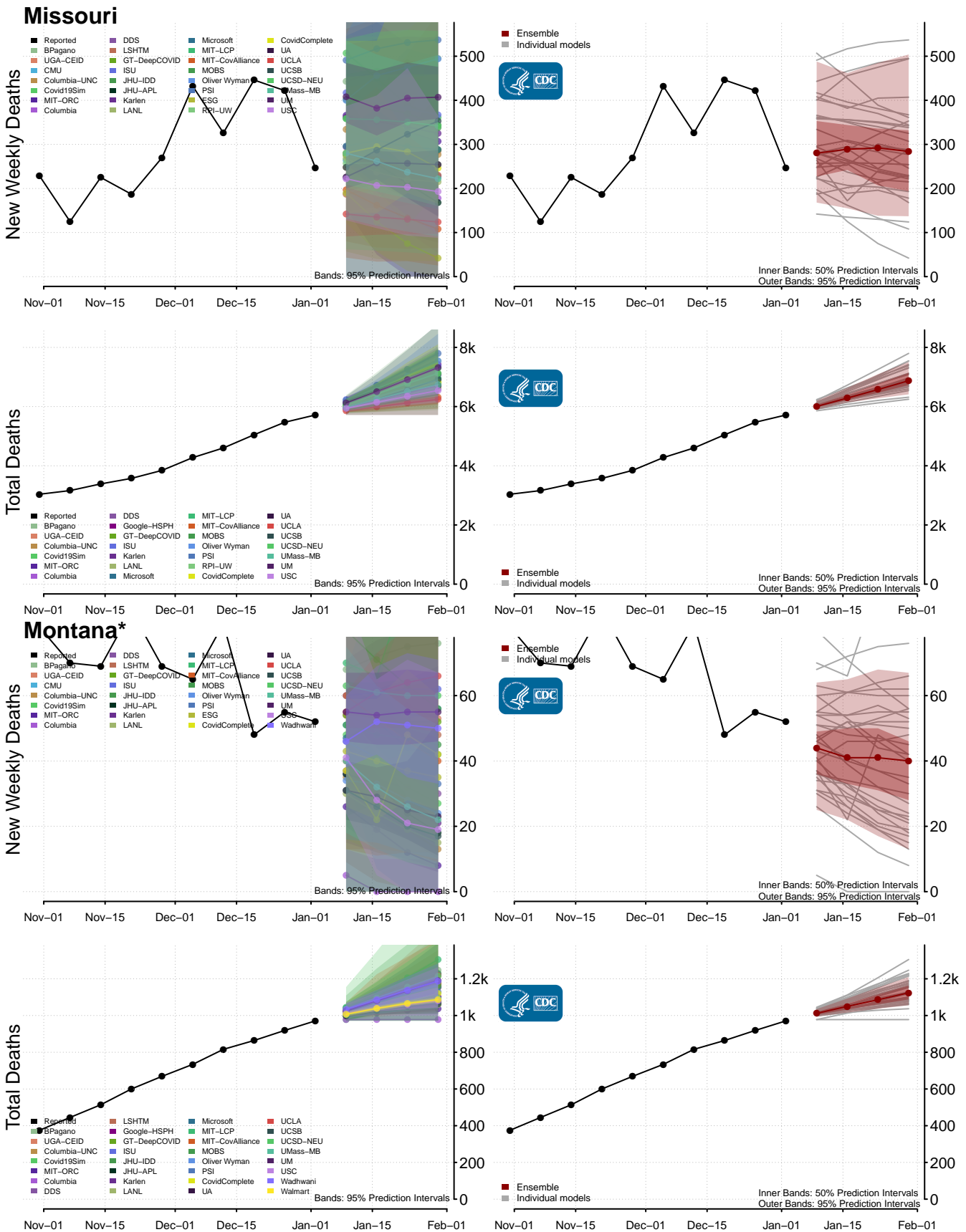


Michigan

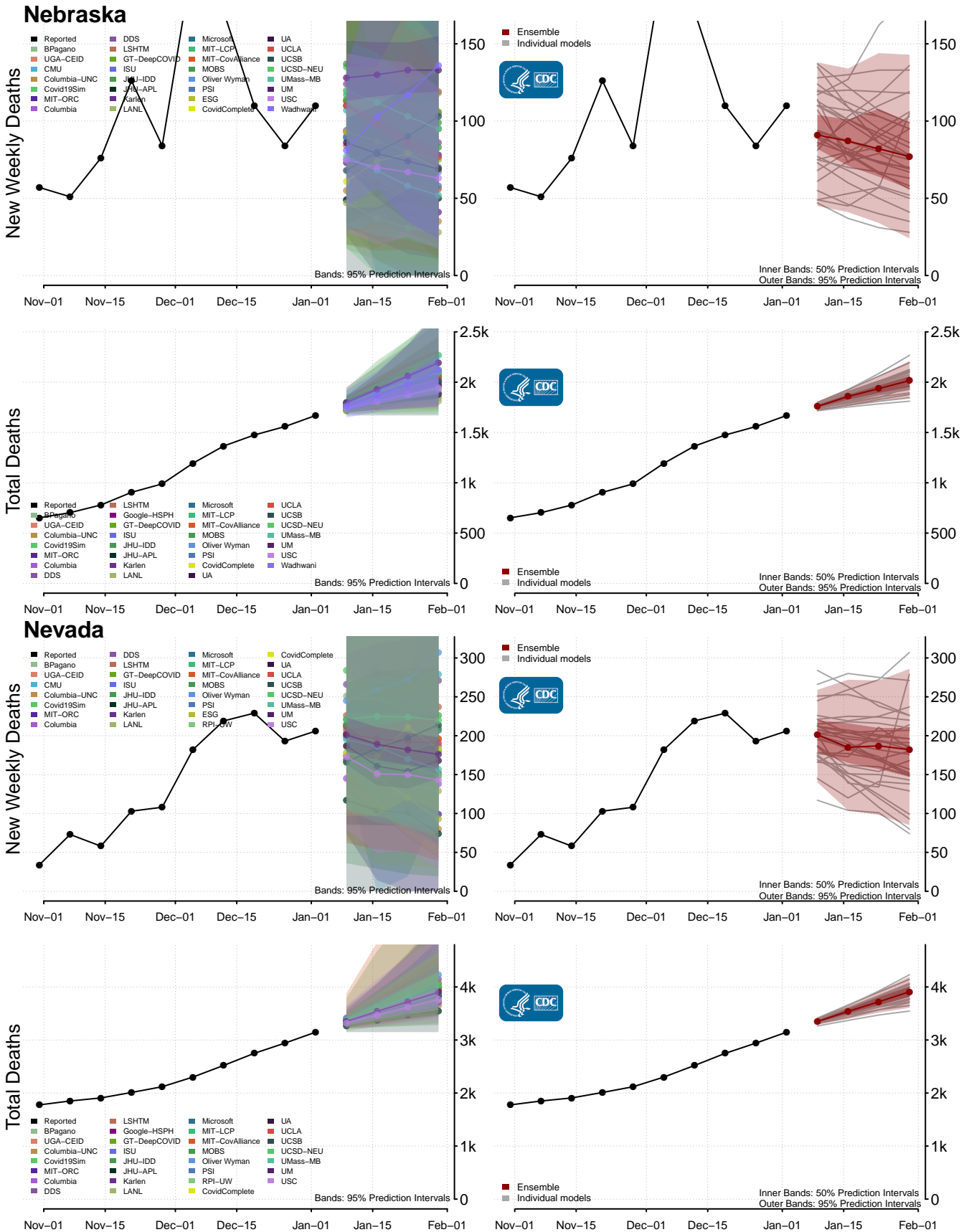




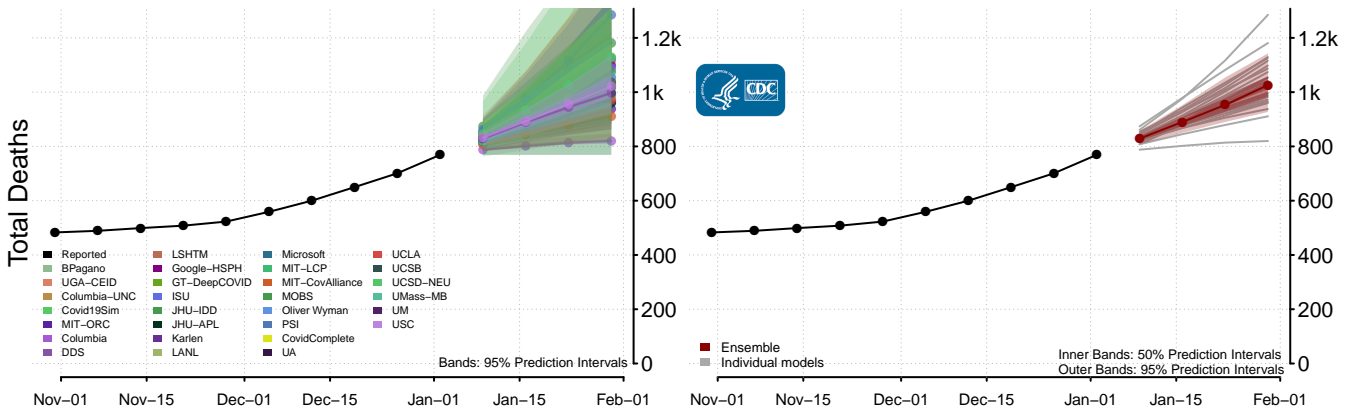
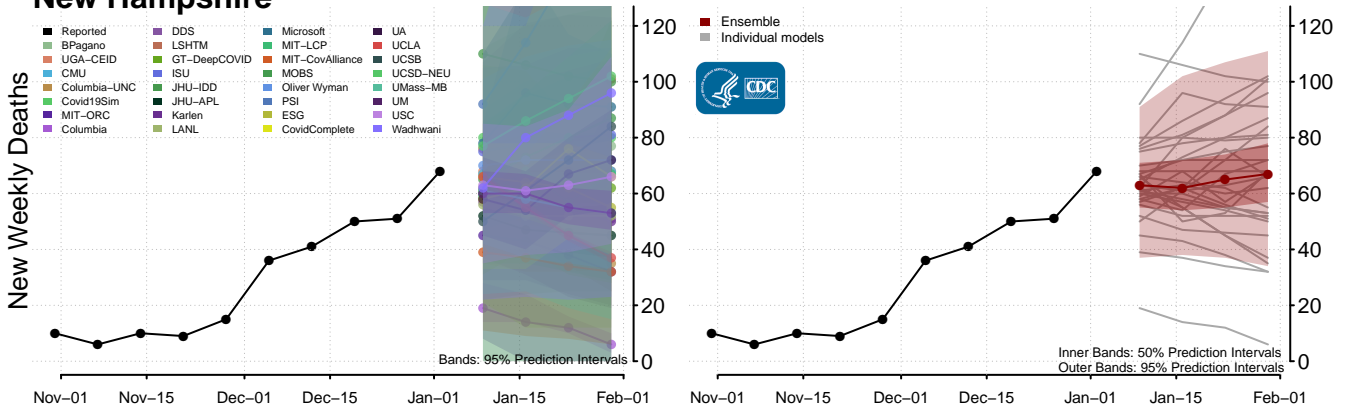
*New weekly deaths may decrease in this location over the next four weeks. For these locations, the ensemble forecast indicates a probability of 0.75 or greater that fewer deaths will be reported in week four of the forecast than in the last reported week.



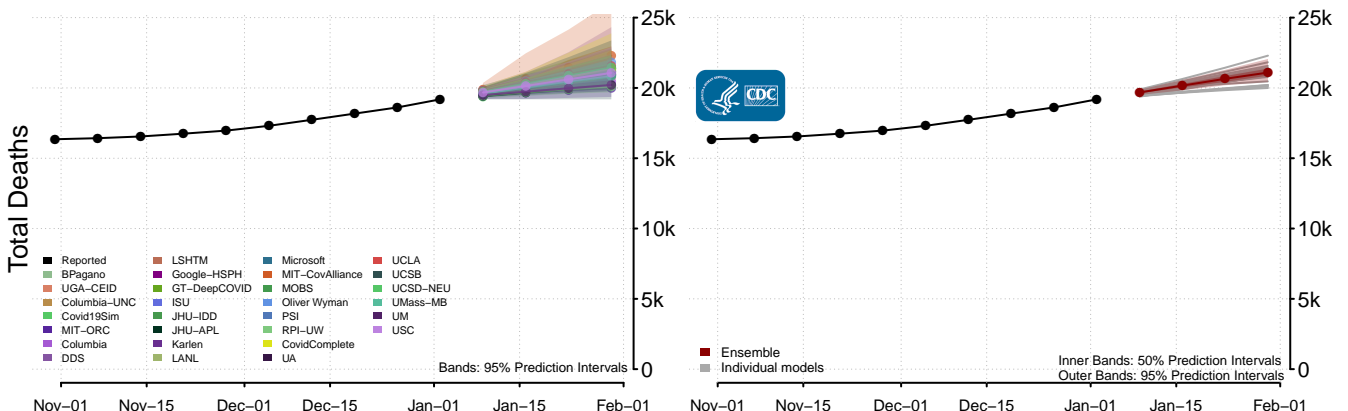
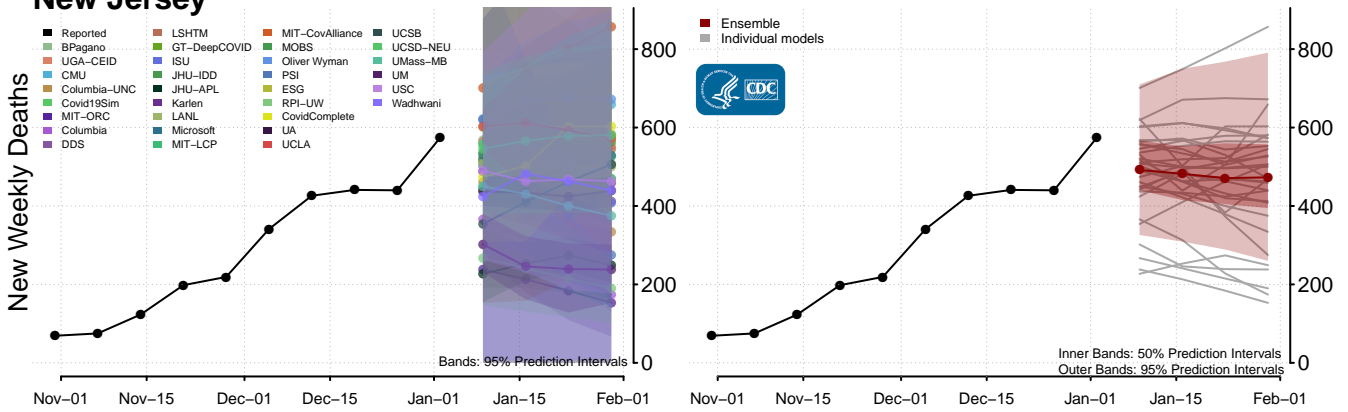
*New weekly deaths may decrease in this location over the next four weeks. For these locations, the ensemble forecast indicates a probability of 0.75 or greater that fewer deaths will be reported in week four of the forecast than in the last reported week.

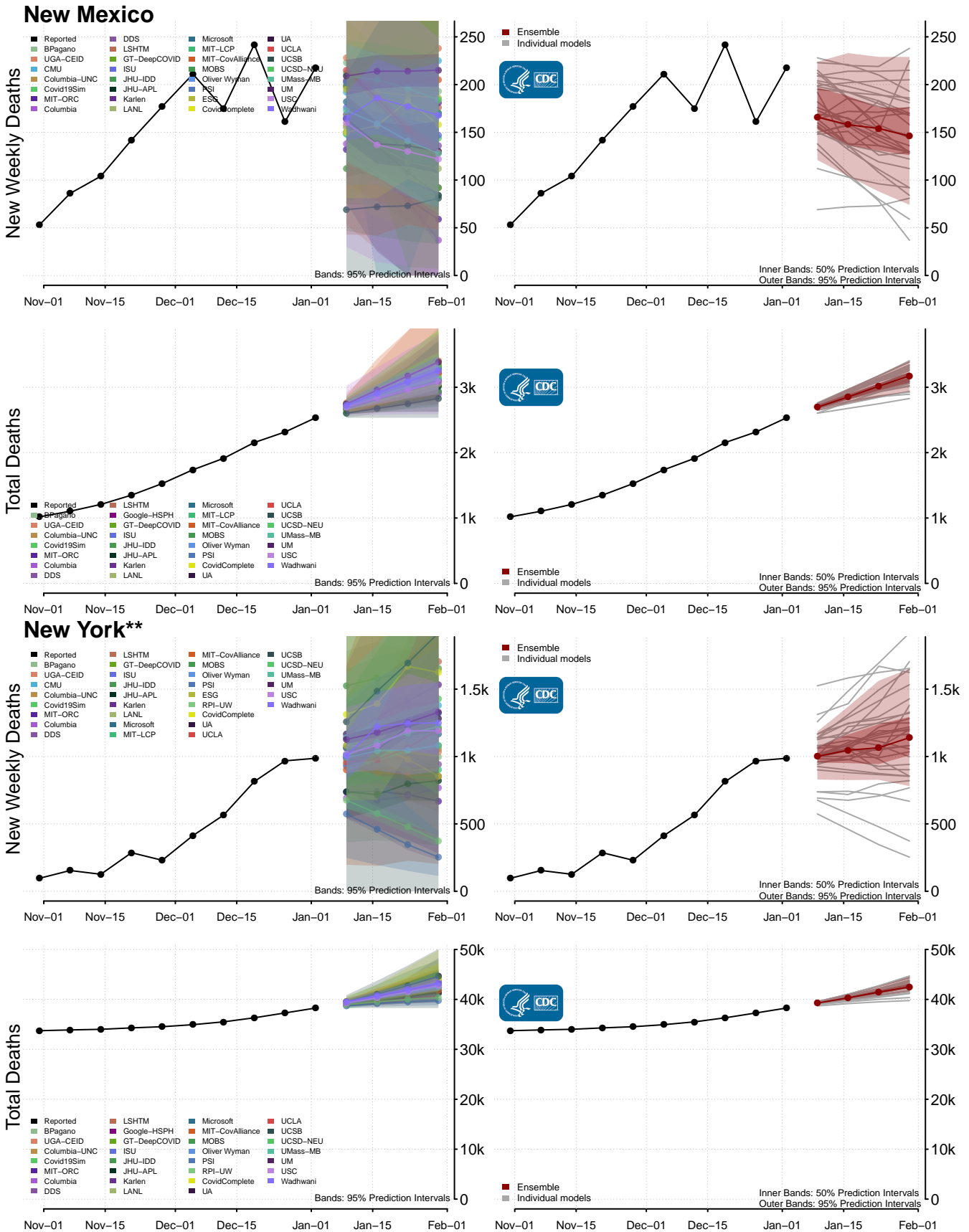


New Hampshire



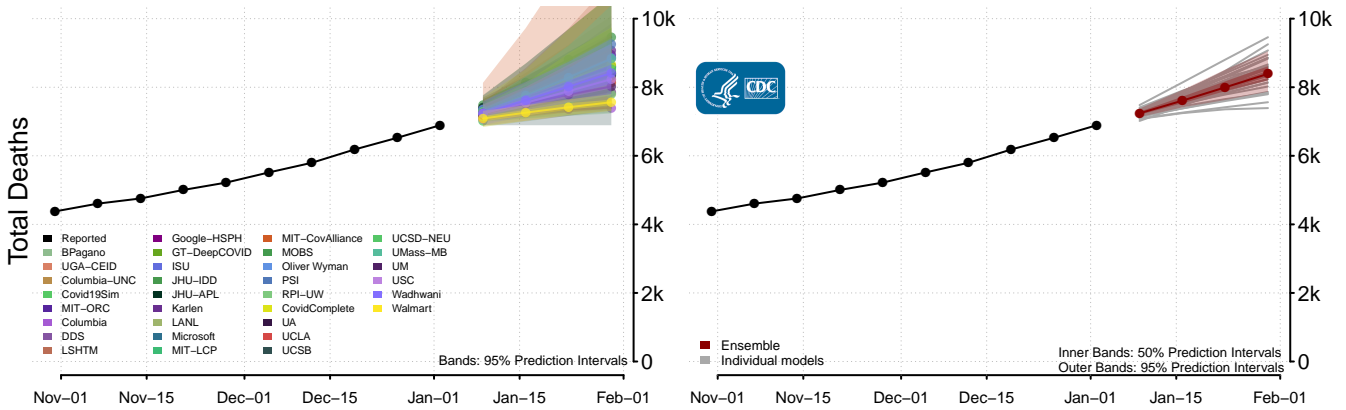
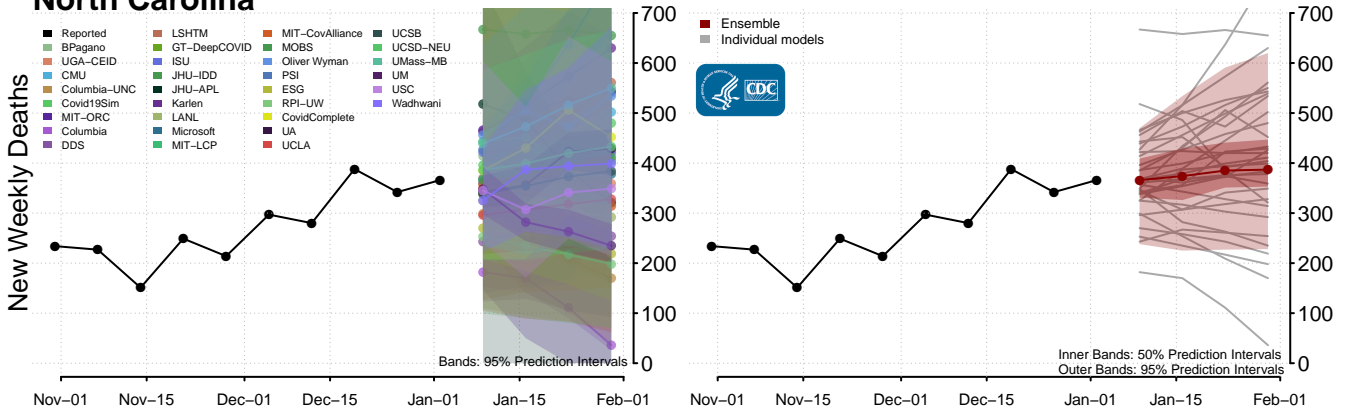
New Jersey



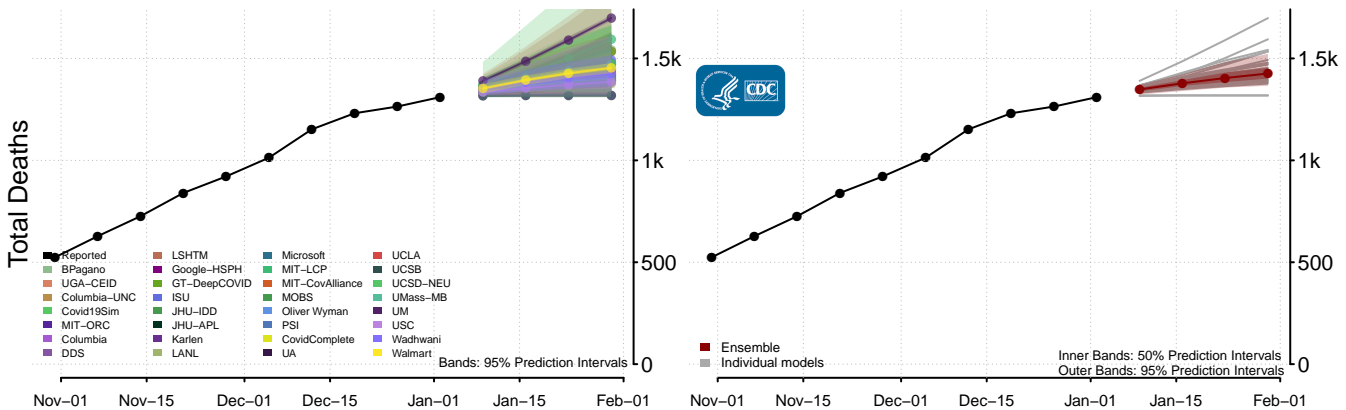
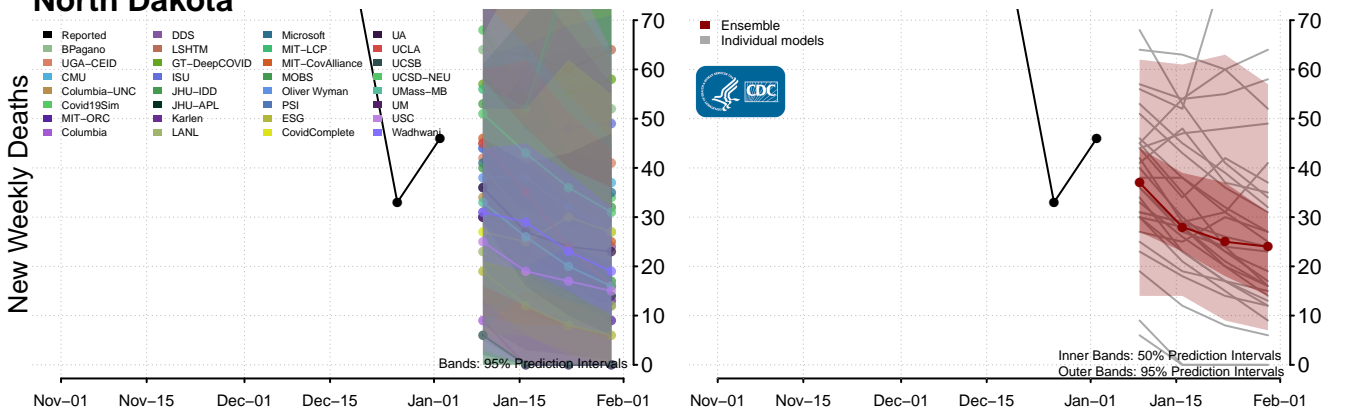


**New weekly deaths may increase in this location over the next four weeks. For these locations, the ensemble forecast indicates a probability of 0.75 or greater that more deaths will be reported in week four of the forecast than in the last reported week.

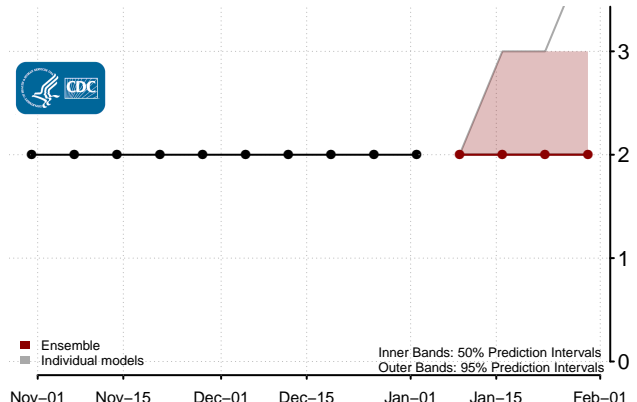
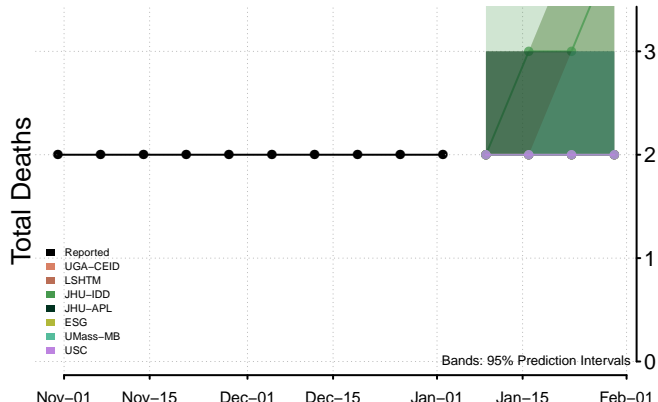
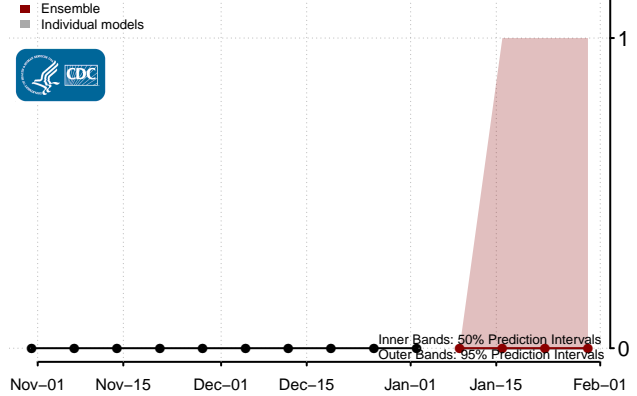
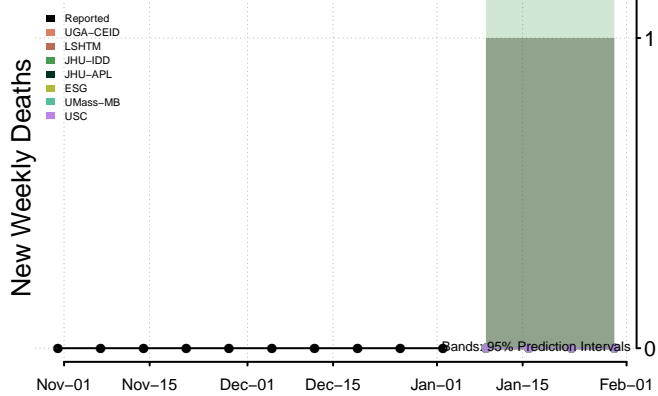
North Carolina



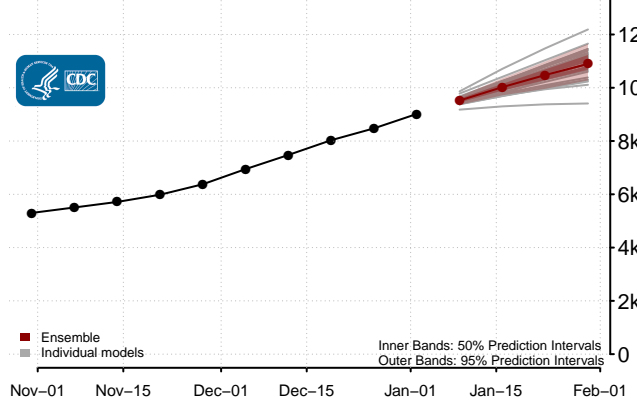
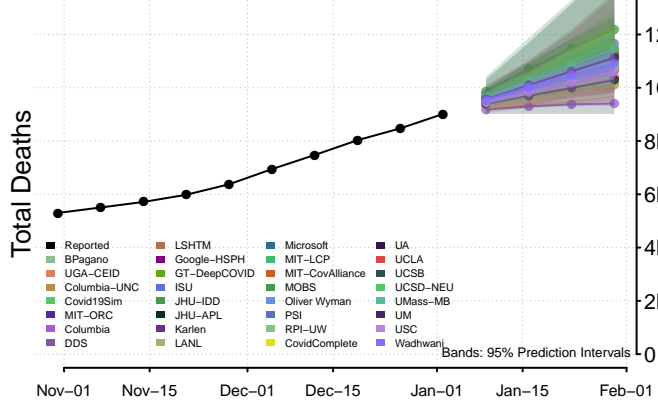
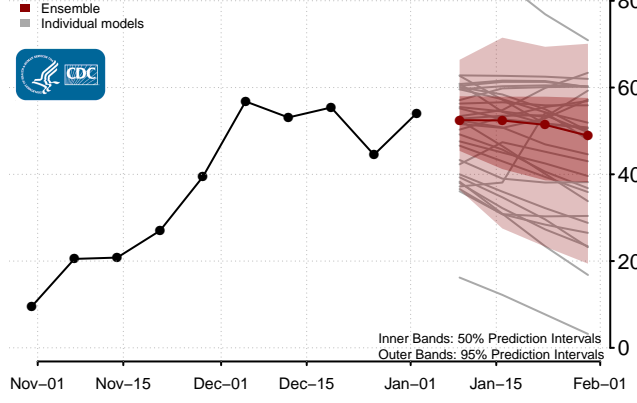
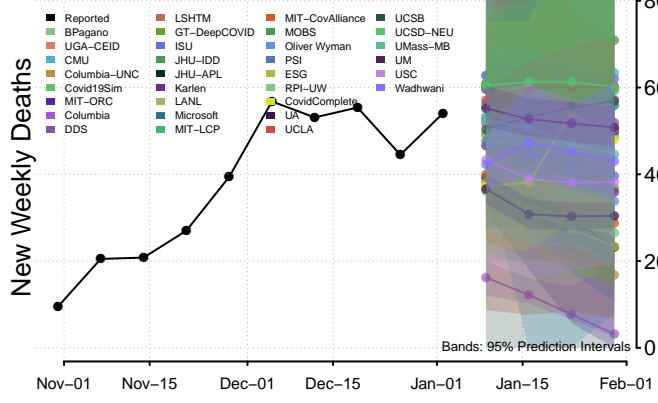
North Dakota

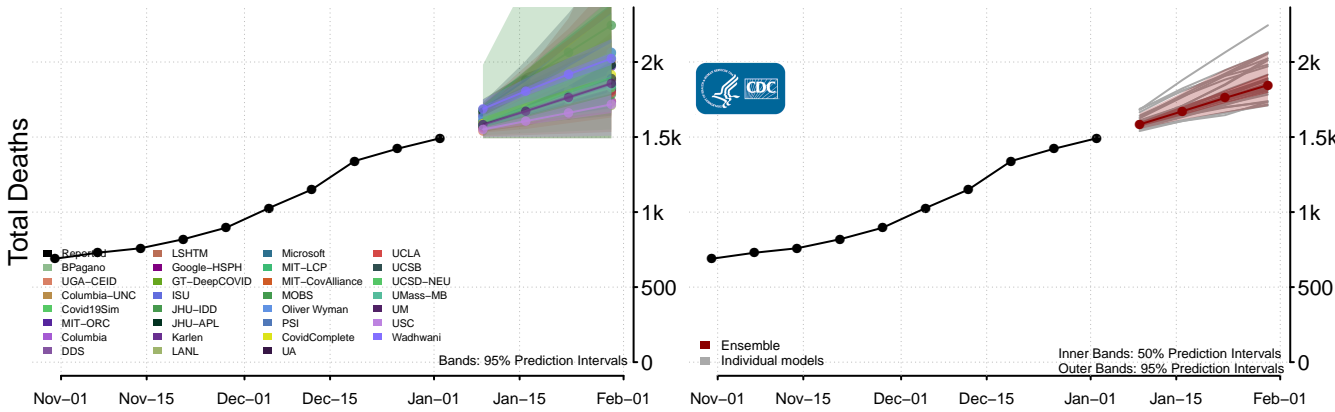
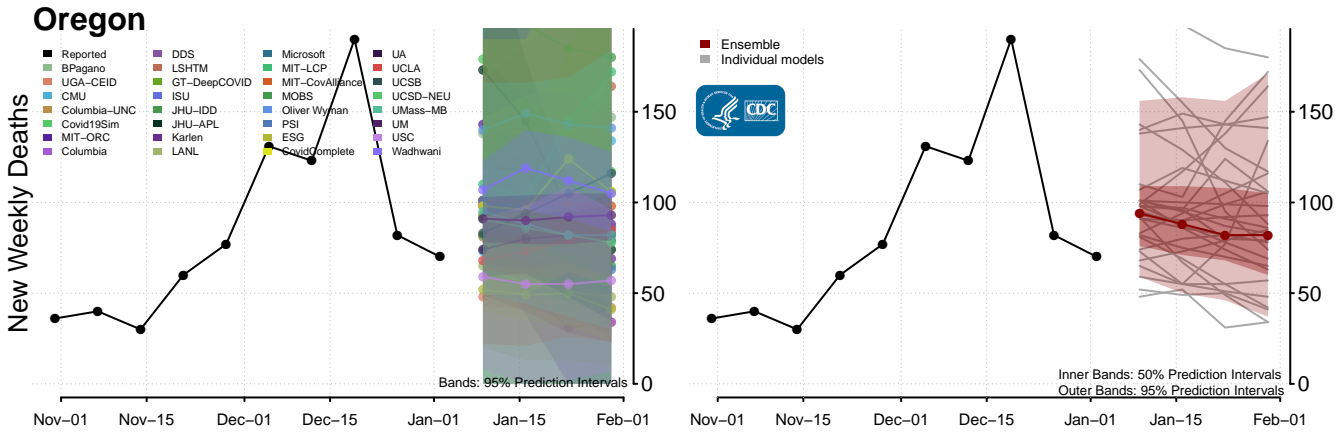
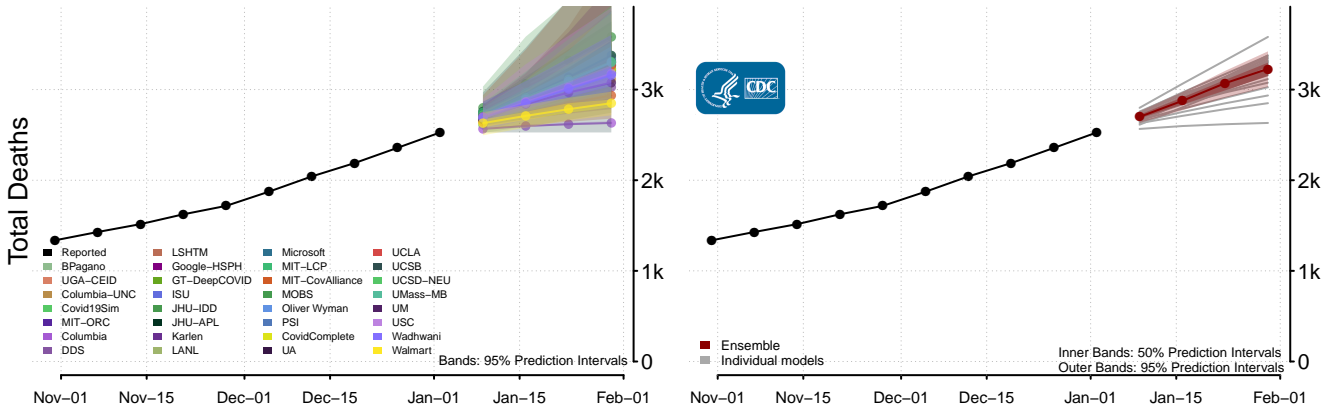
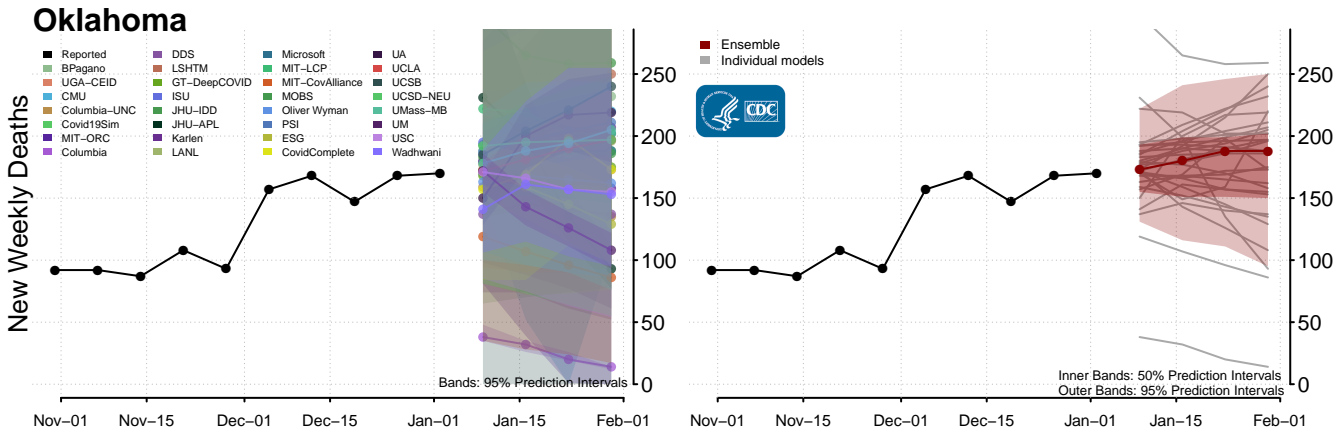


Northern Mariana Islands

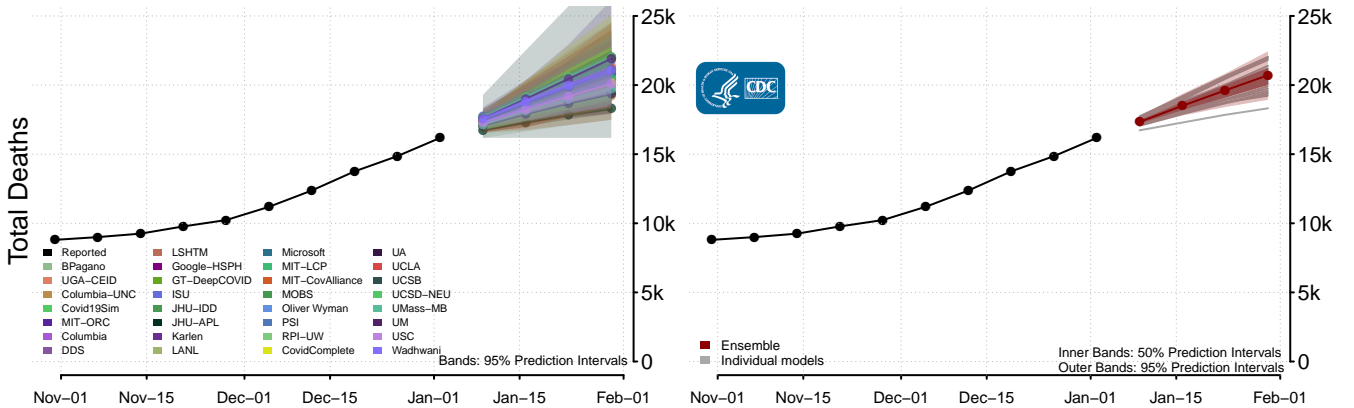
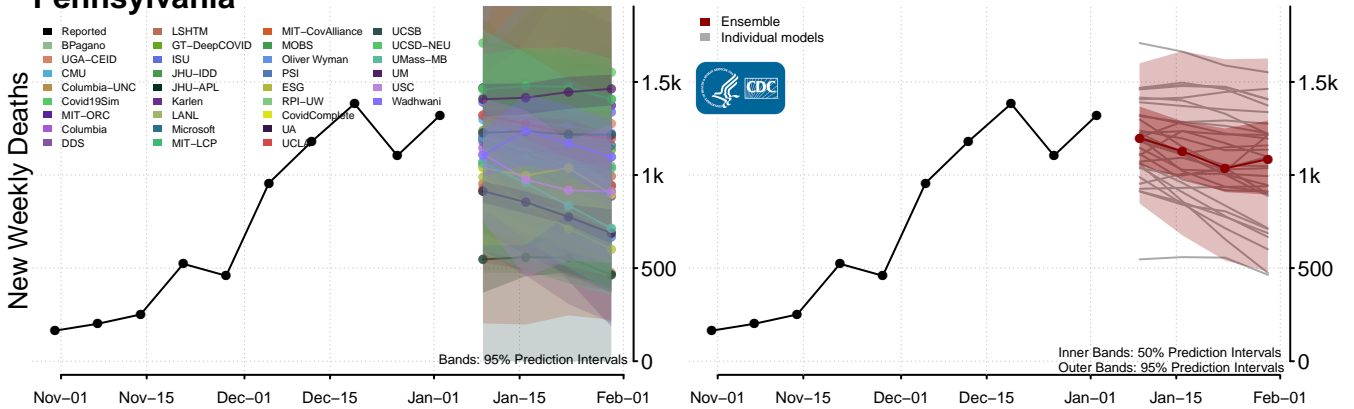


Ohio

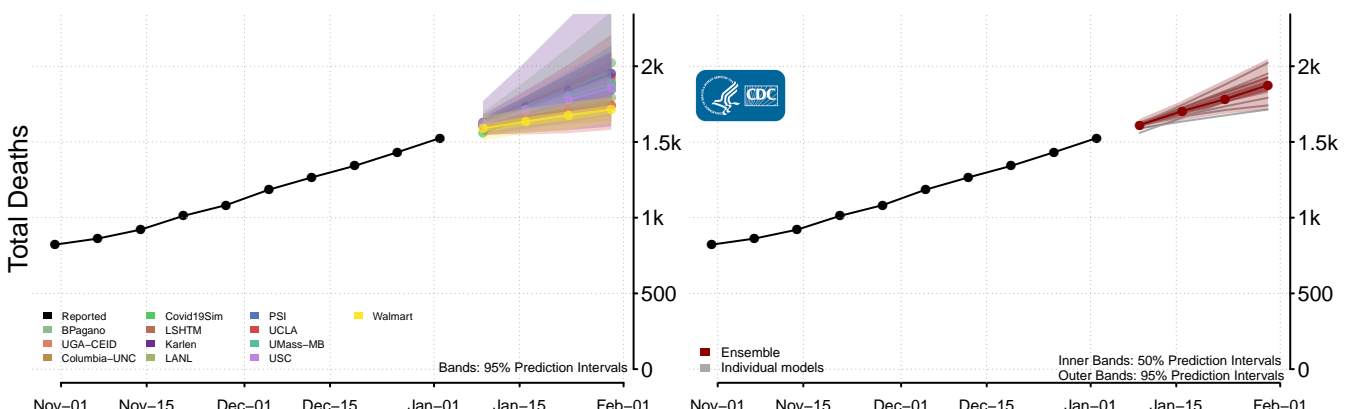
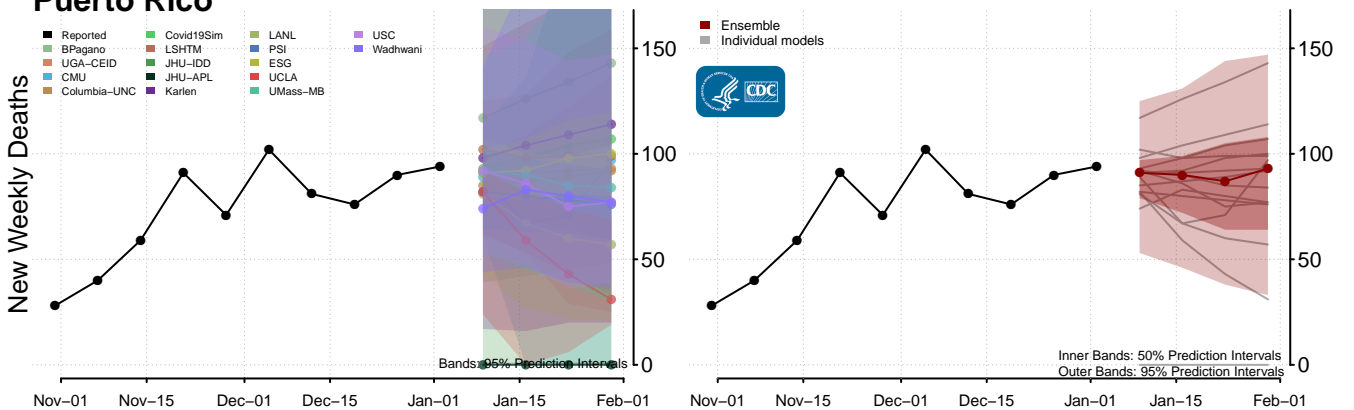




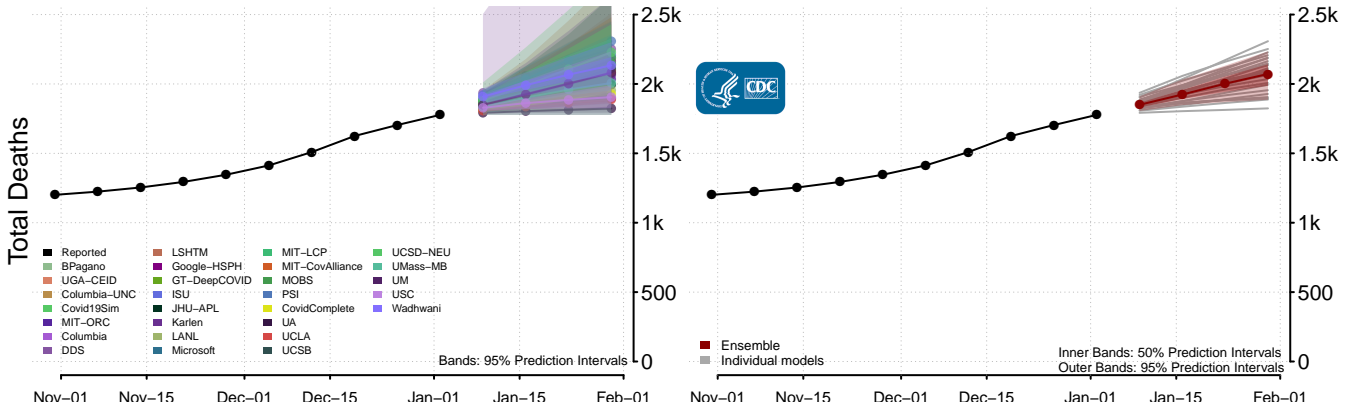
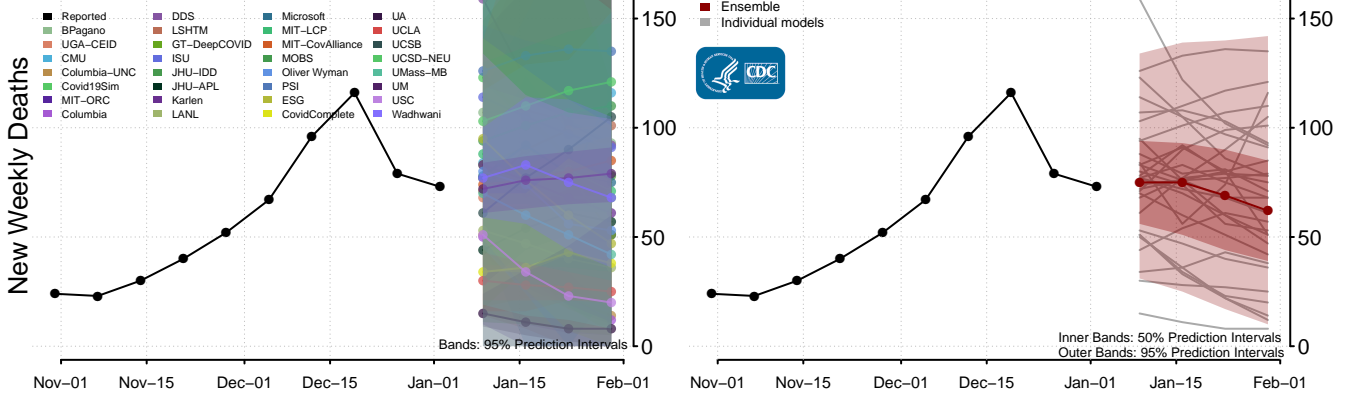
Pennsylvania



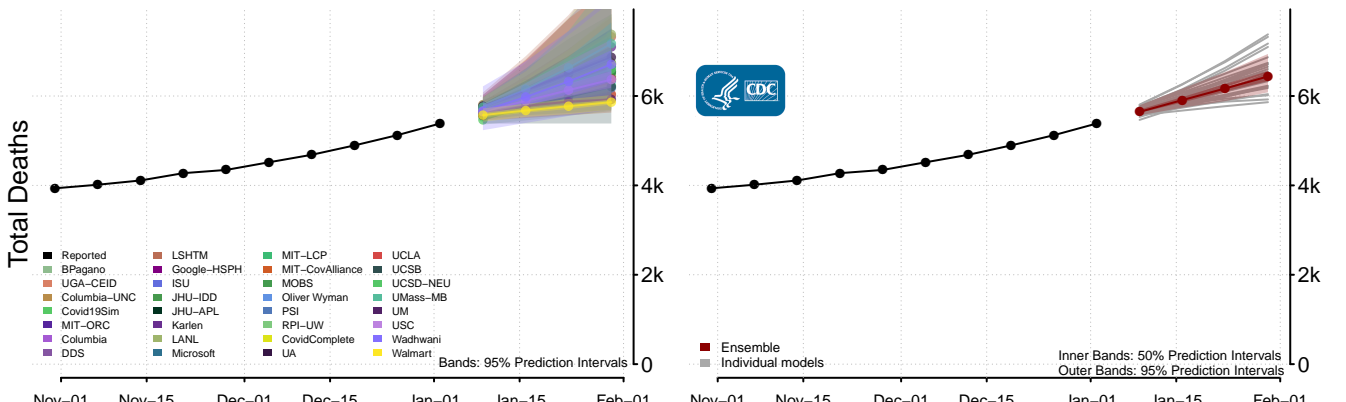
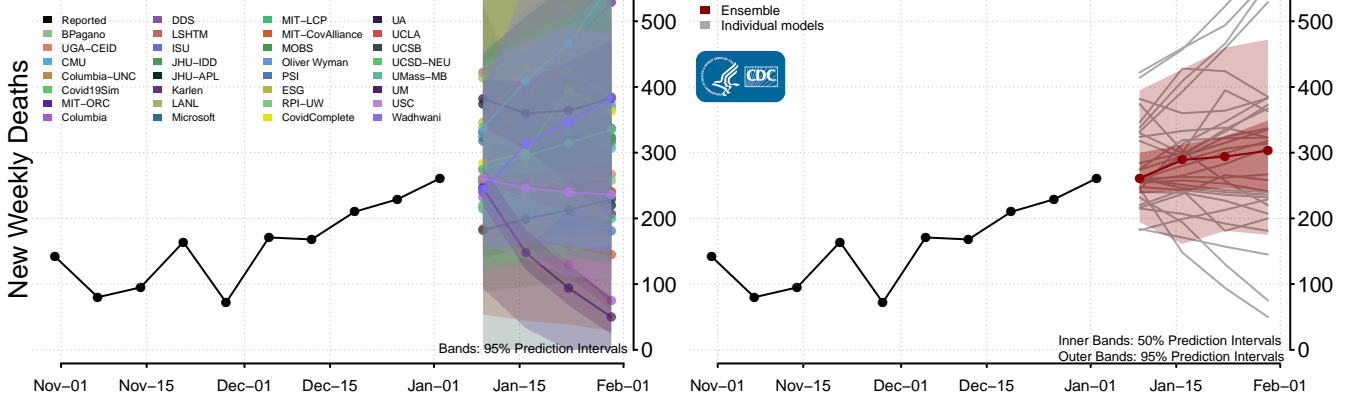
Puerto Rico

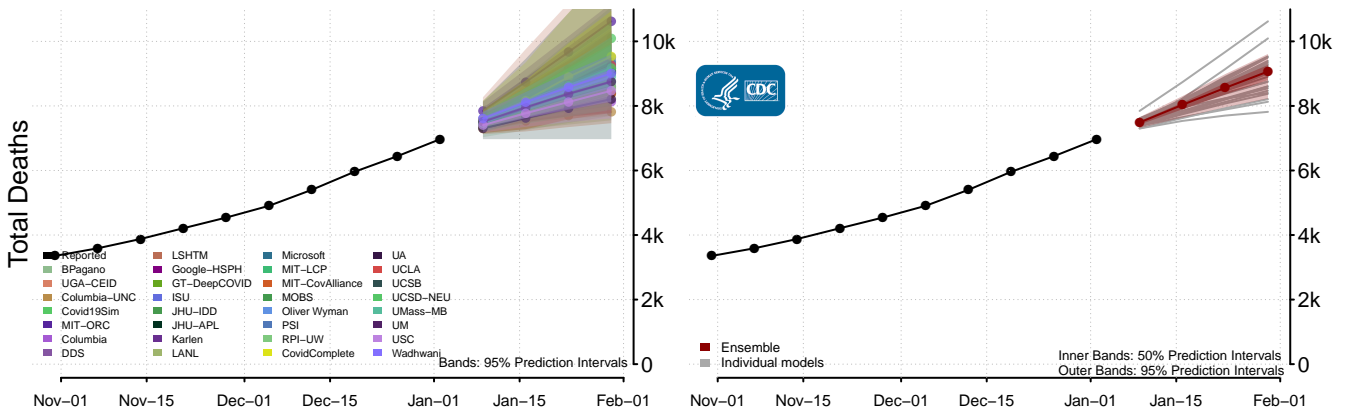
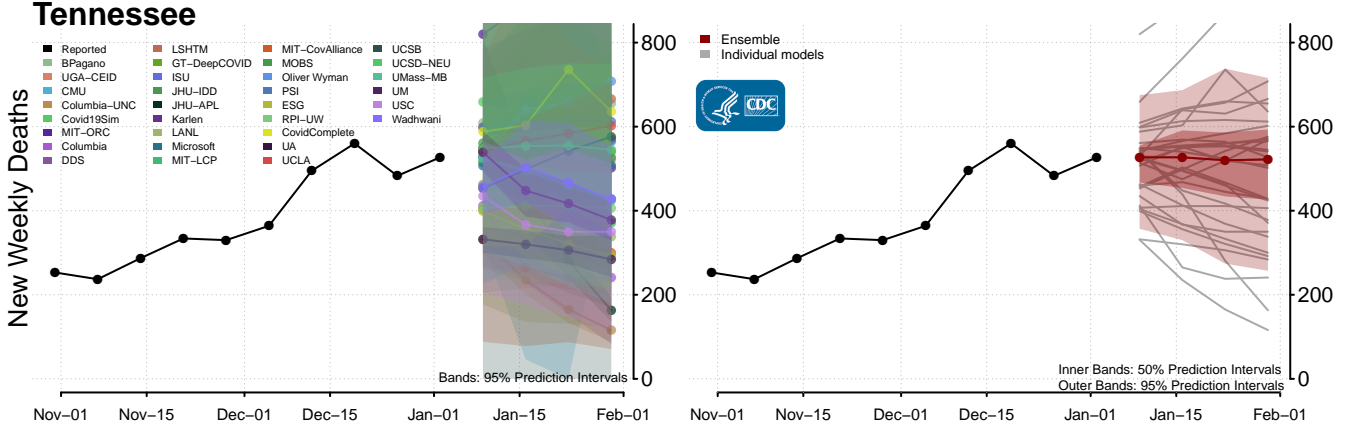
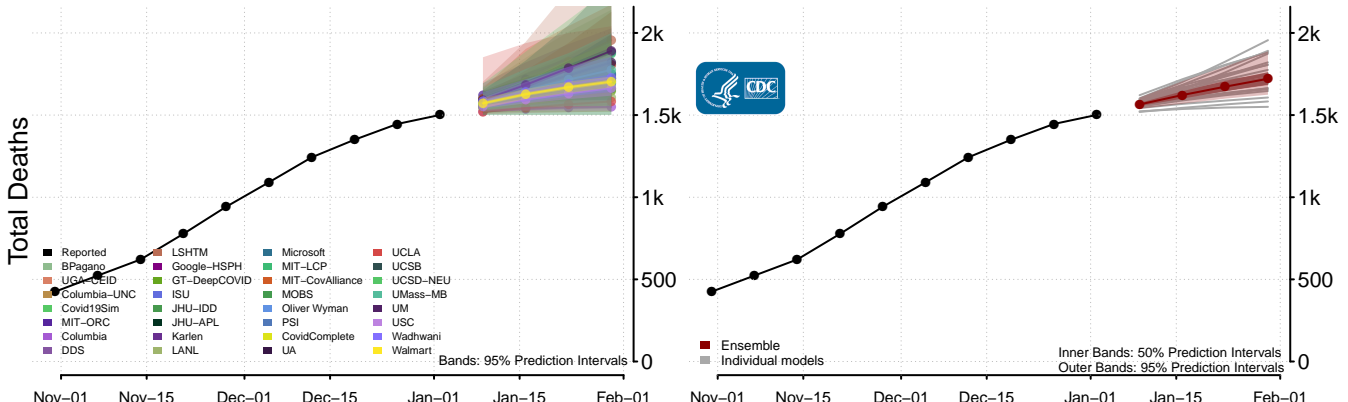
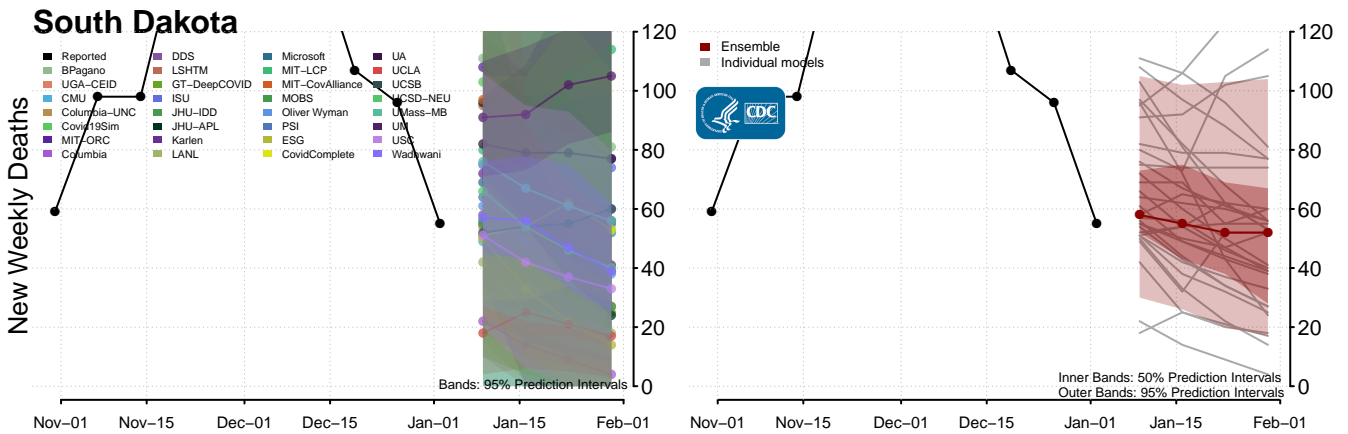


Rhode Island

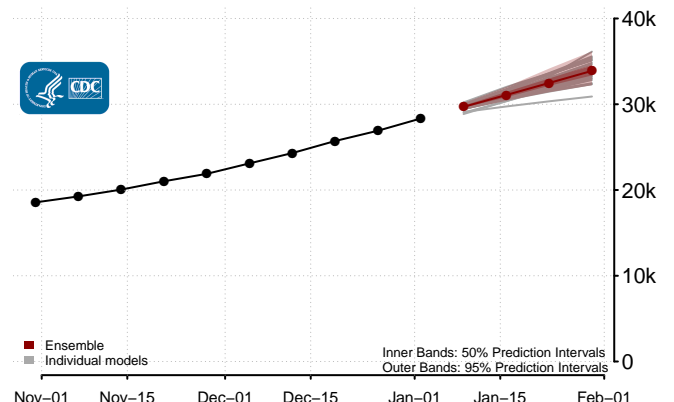
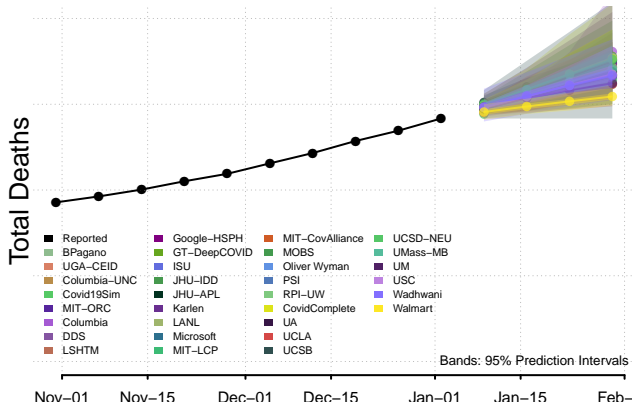
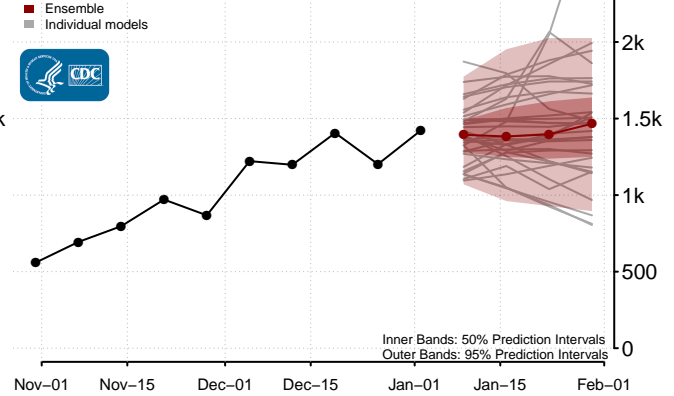
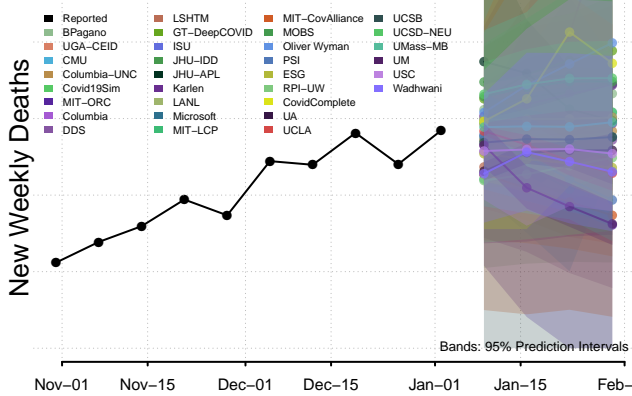


South Carolina

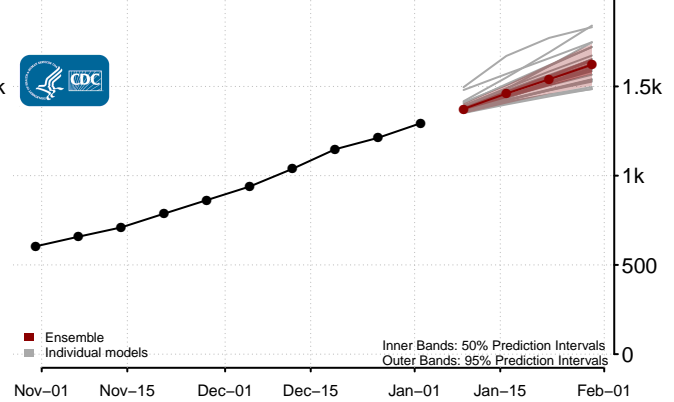
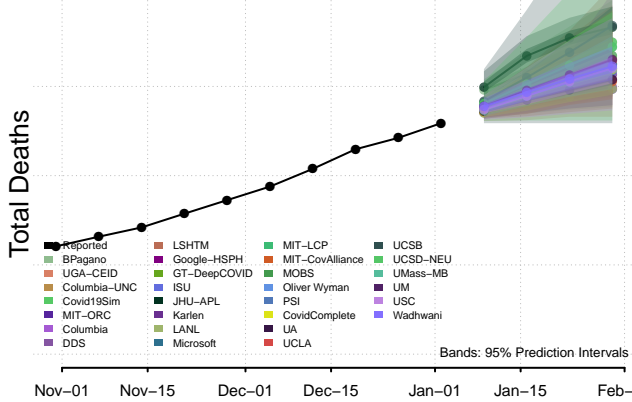
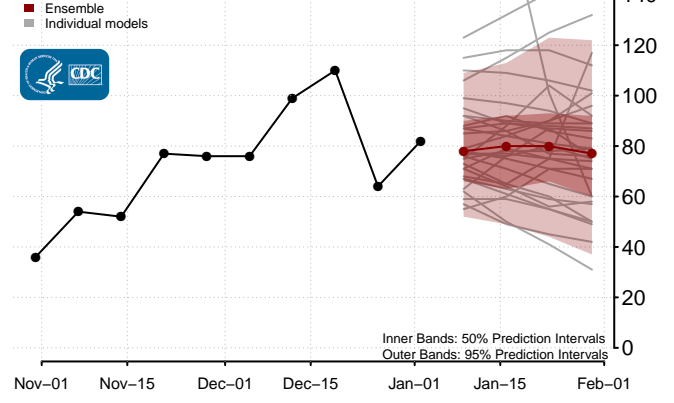
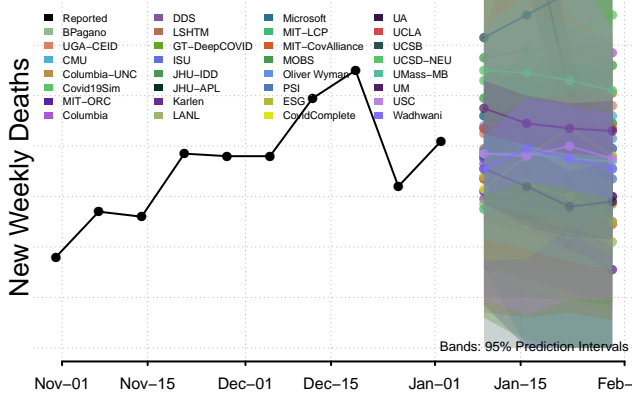




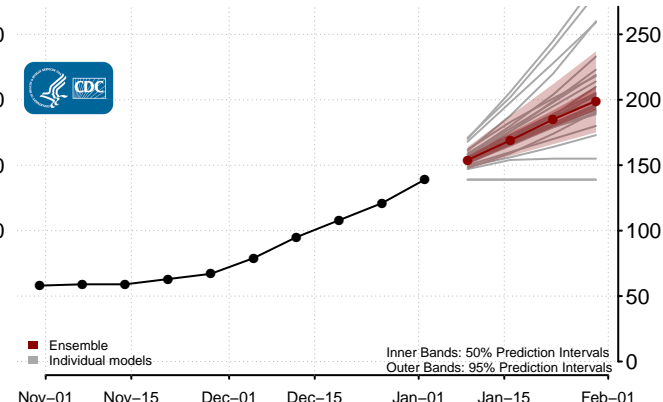
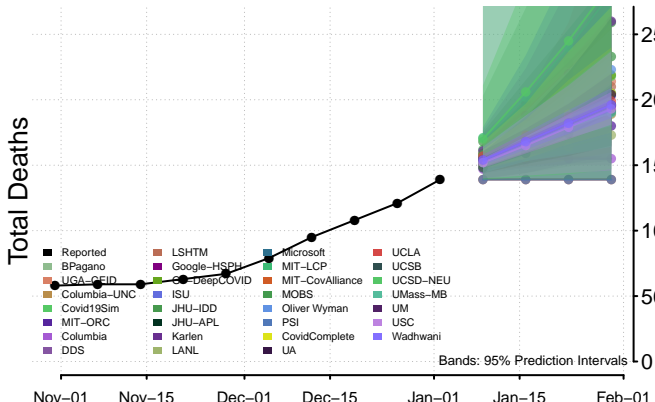
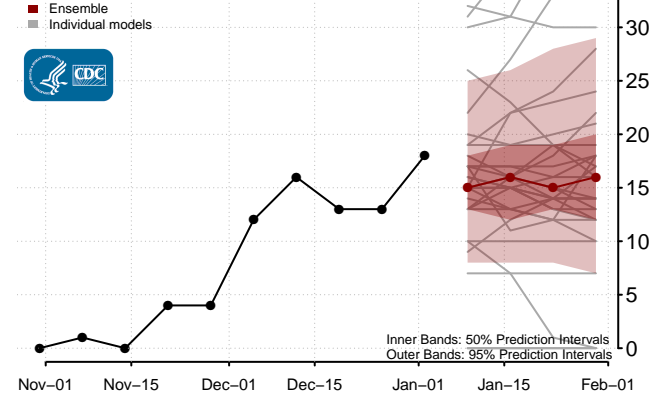
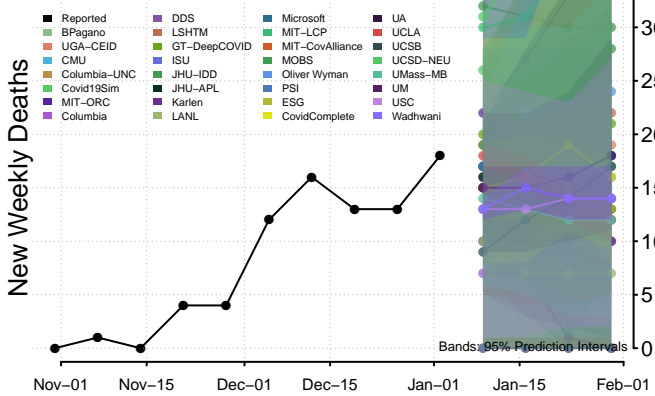
Texas



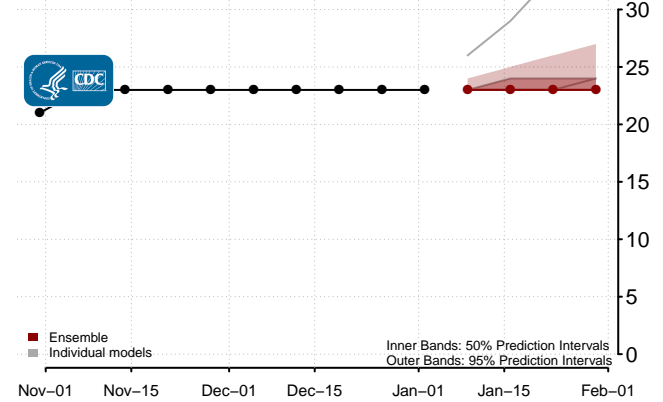
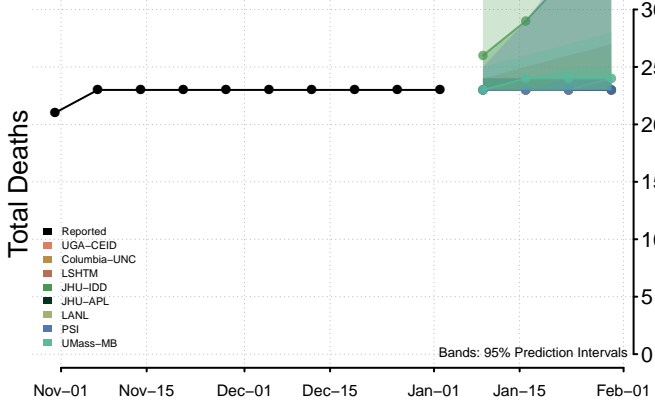
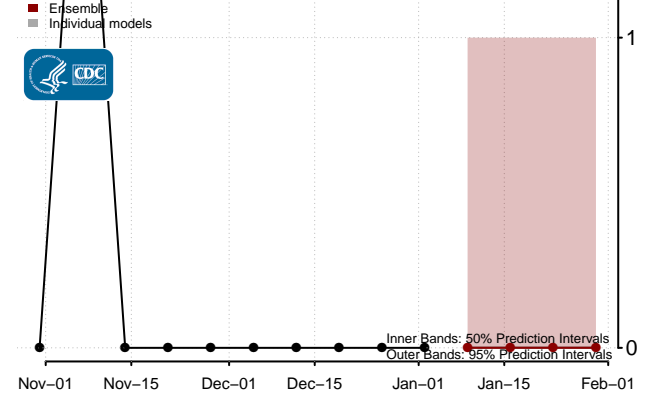
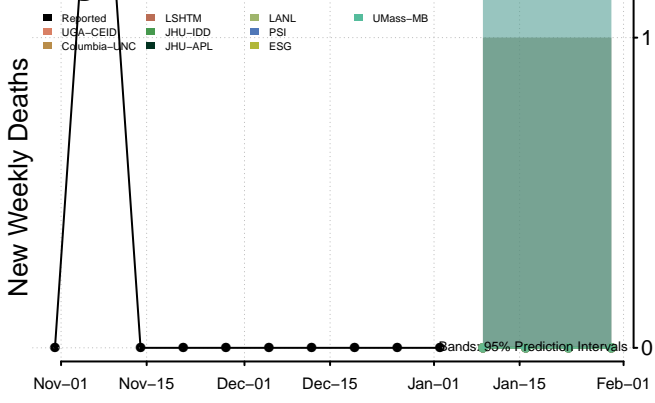
Utah



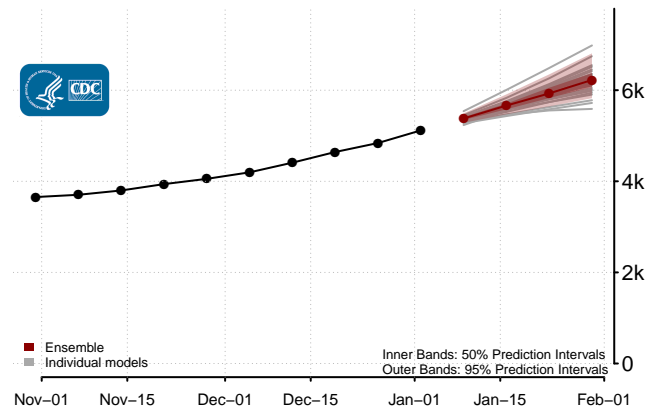
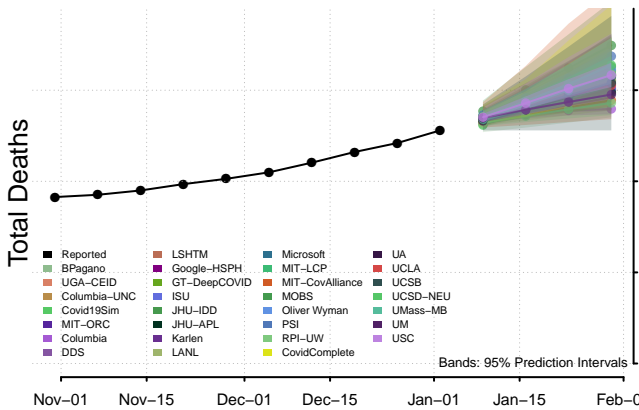
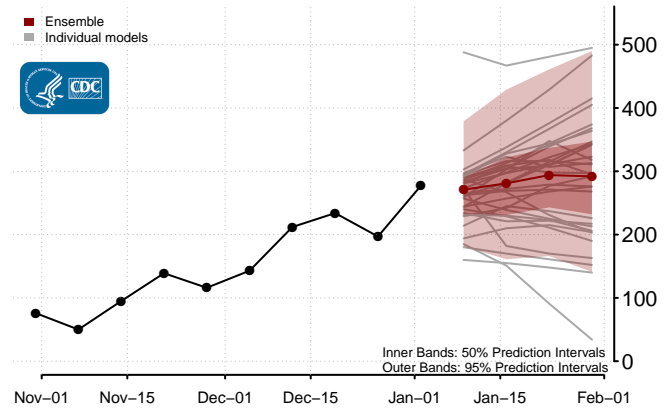
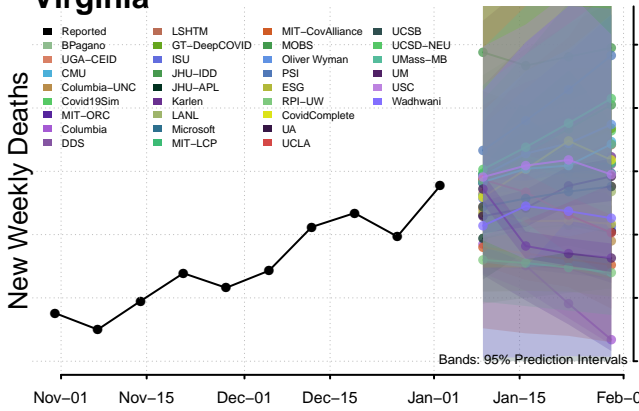
Vermont



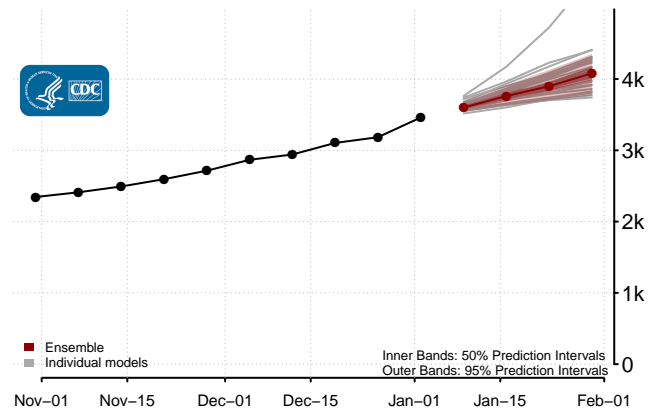
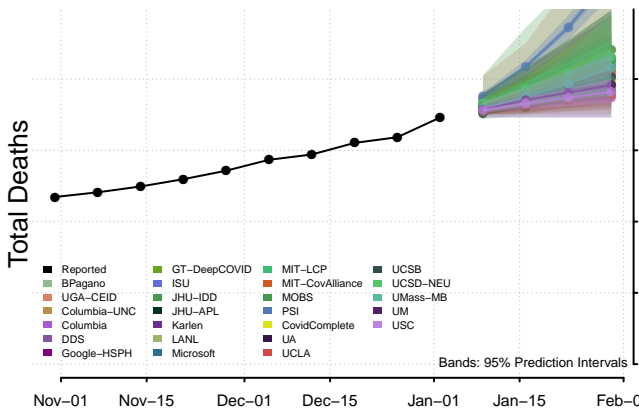
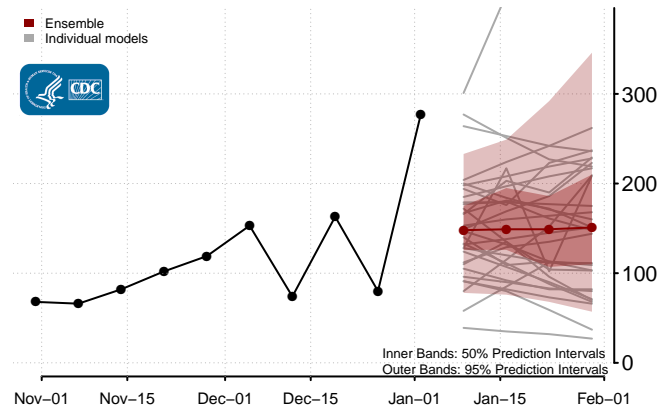
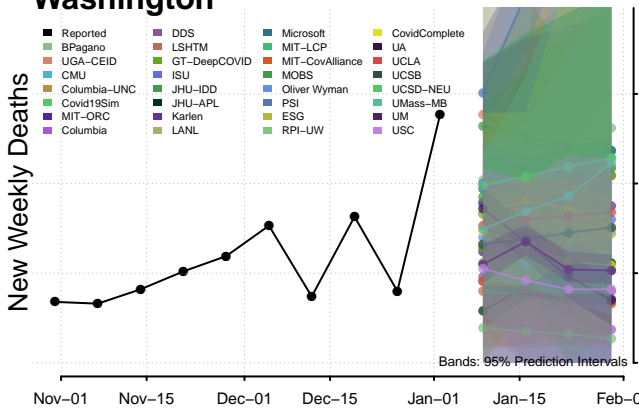
Virgin Islands

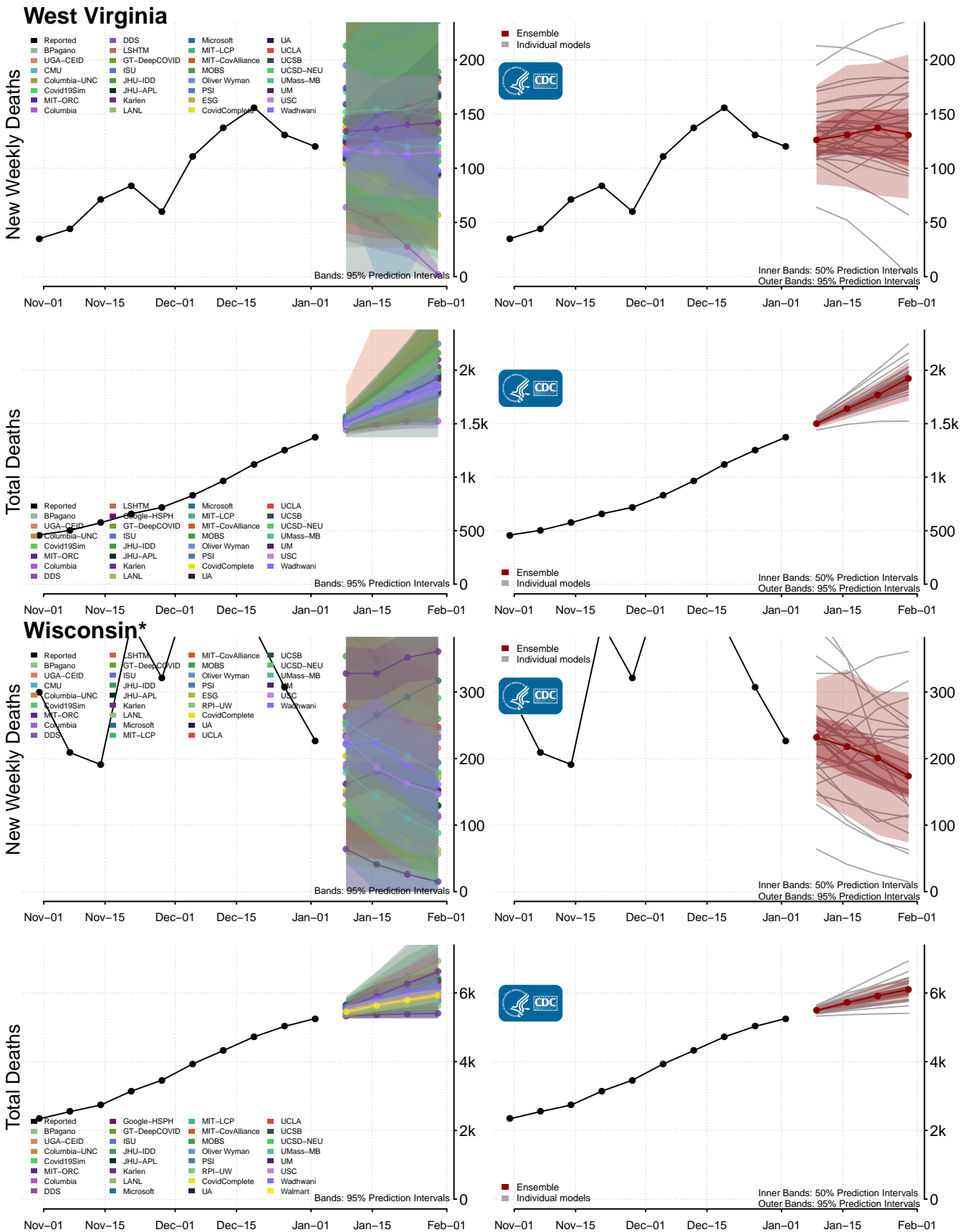


Virginia



Washington





*New weekly deaths may decrease in this location over the next four weeks. For these locations, the ensemble forecast indicates a probability of 0.75 or greater that fewer deaths will be reported in week four of the forecast than in the last reported week.

