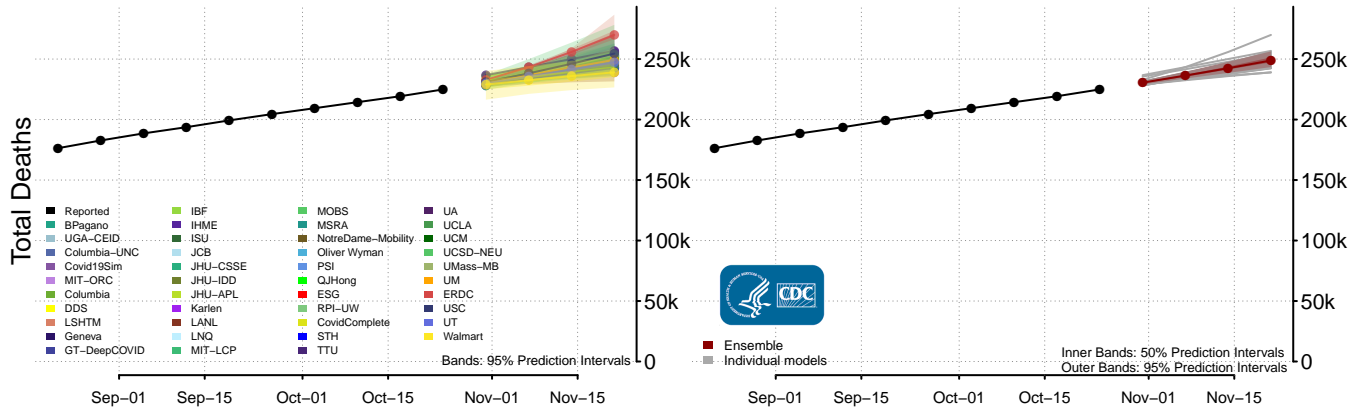
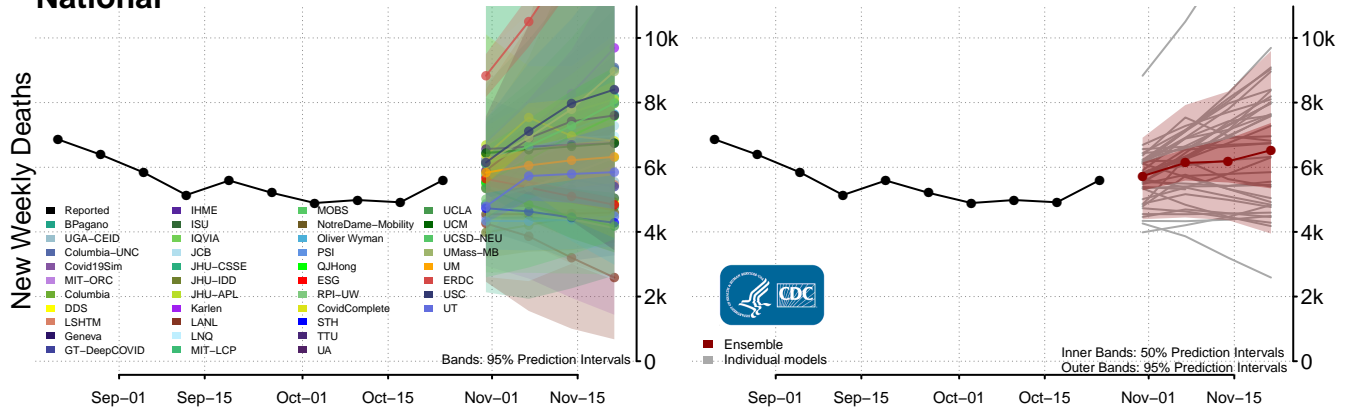
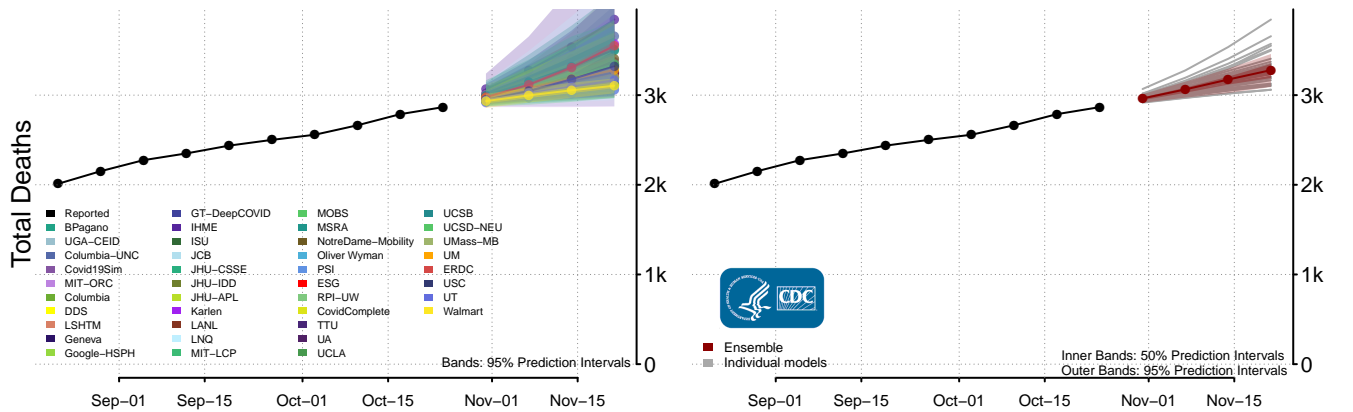
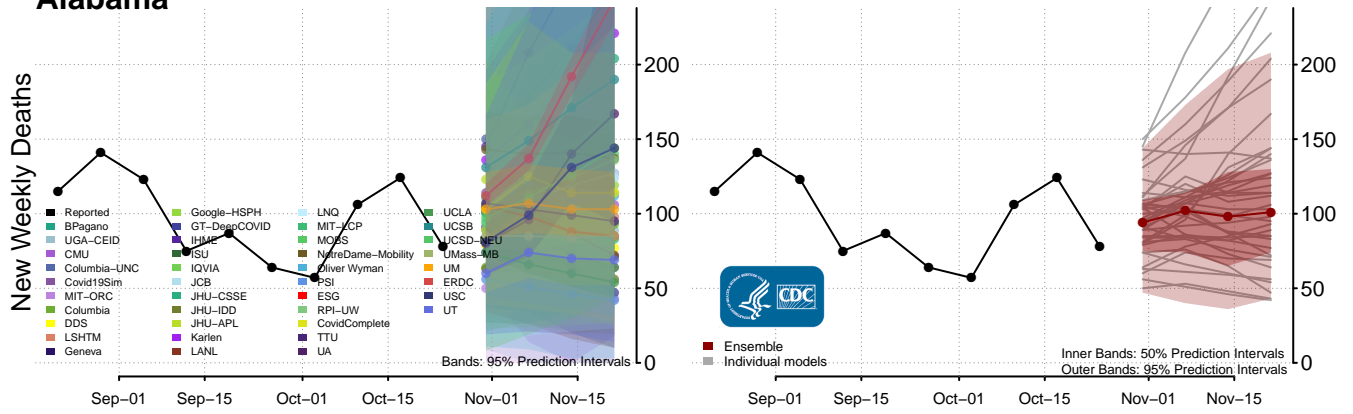


### National

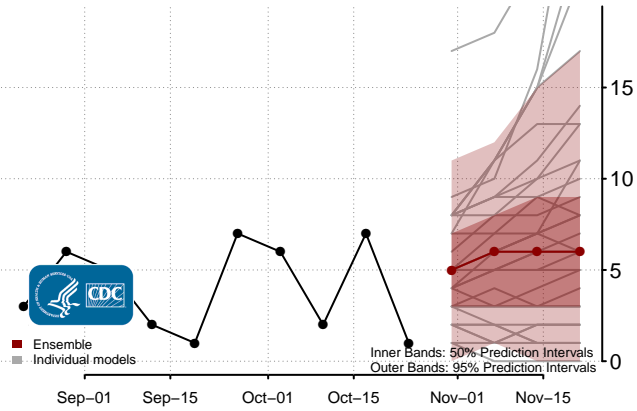
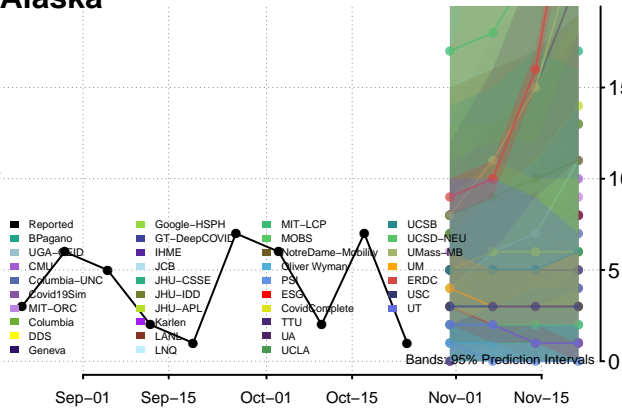


### Alabama

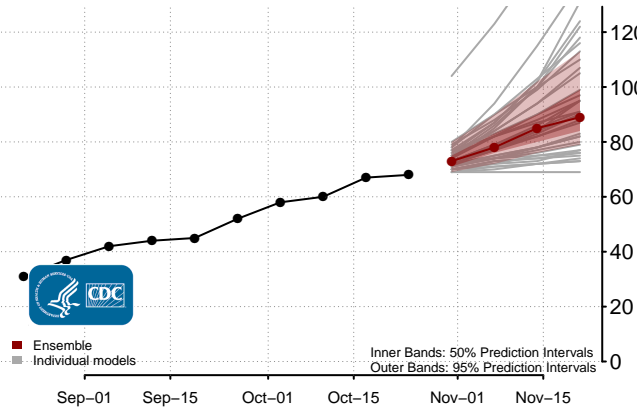
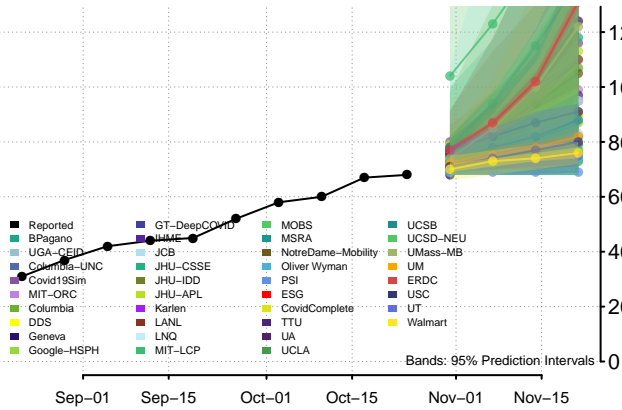


# Alaska

New Weekly Deaths

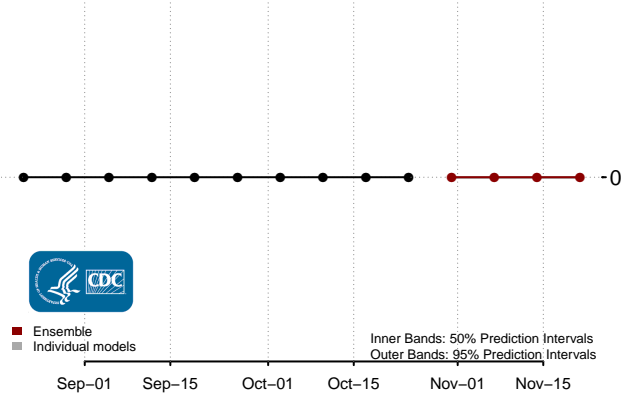
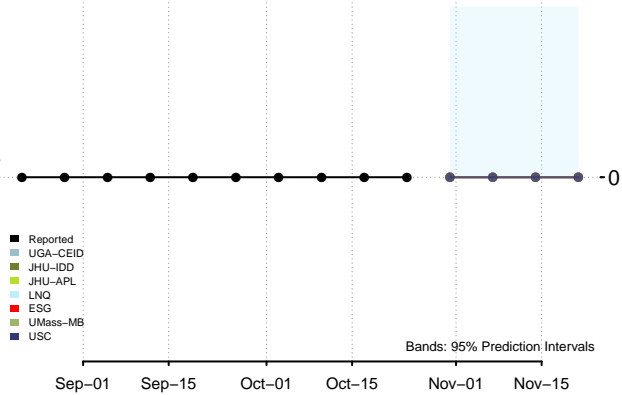


Total Deaths

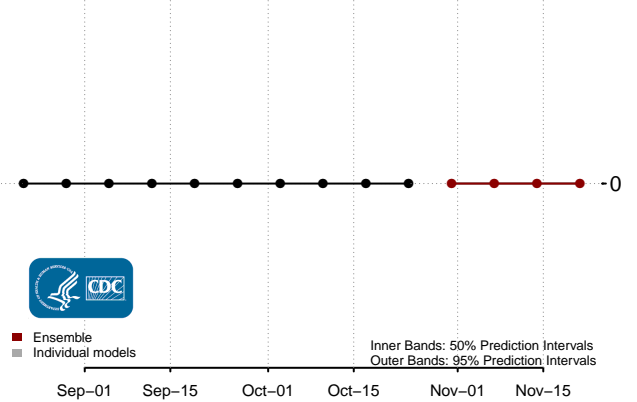
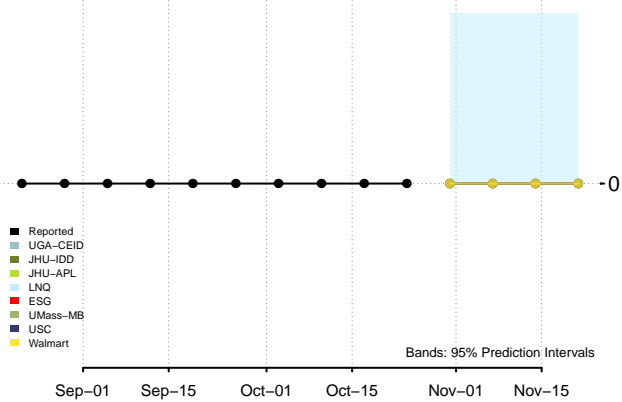


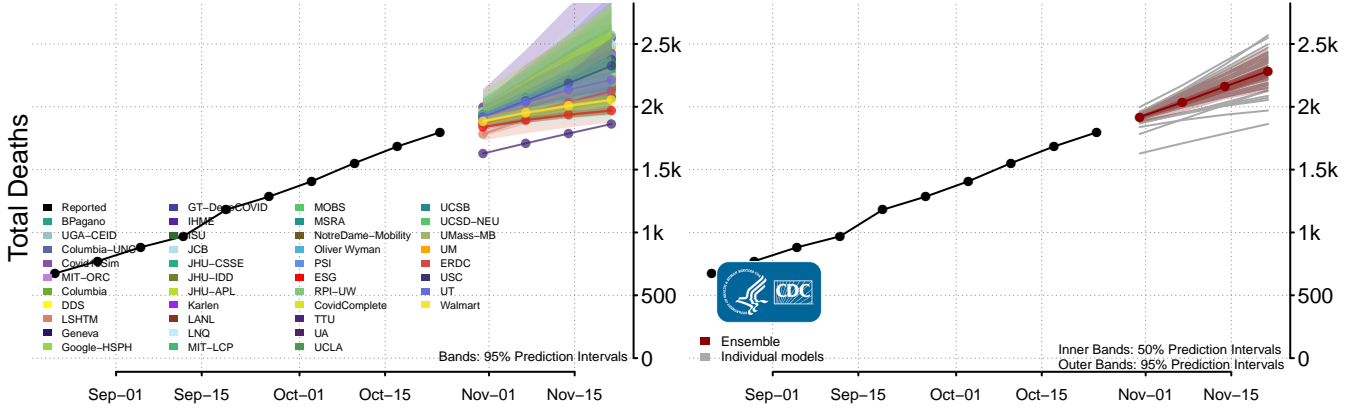
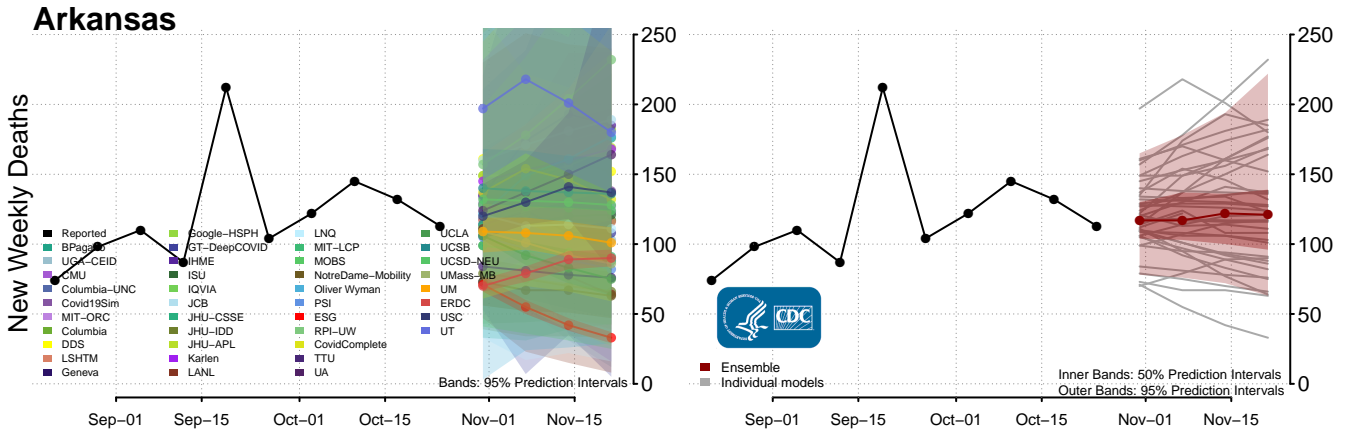
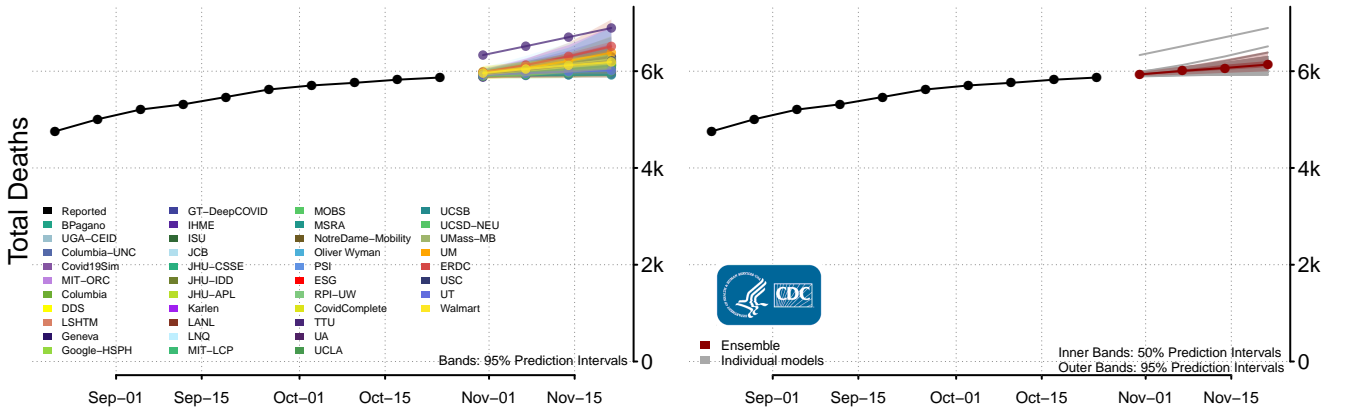
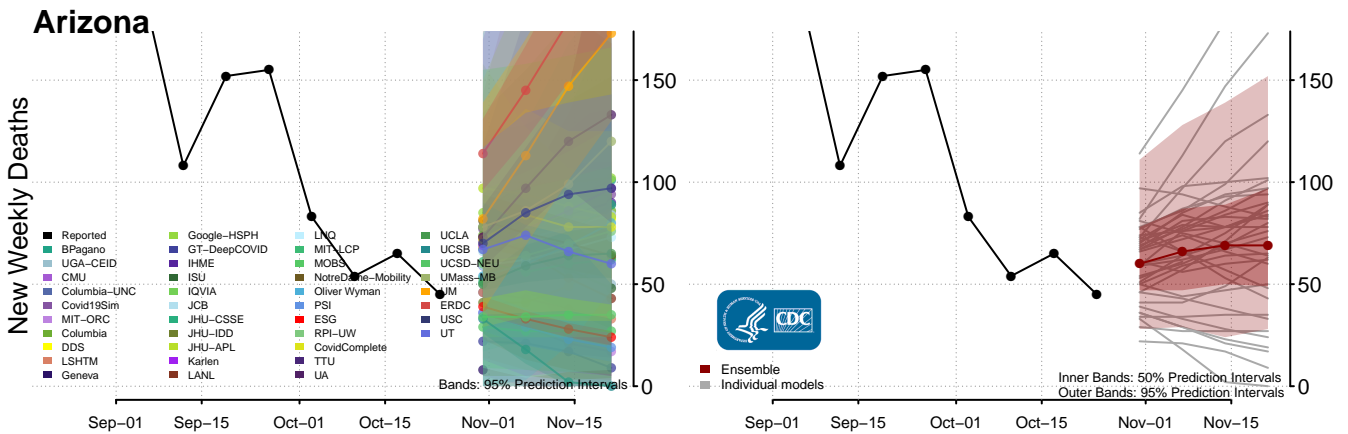
# American Samoa

New Weekly Deaths

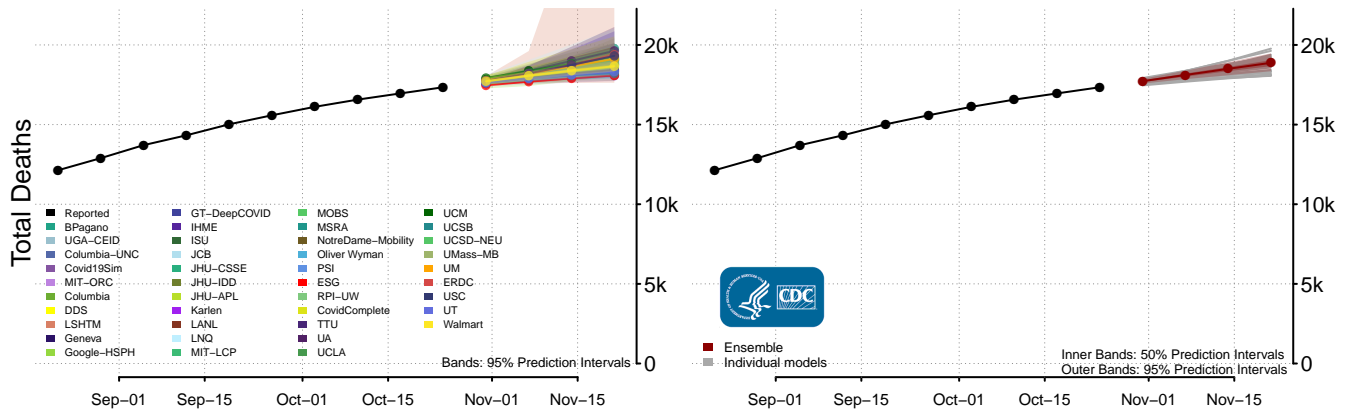
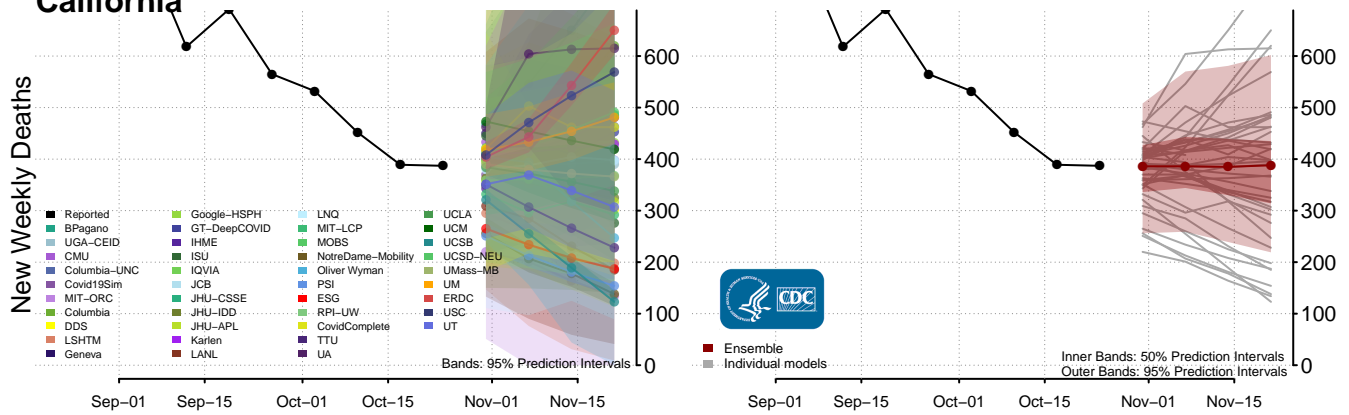


Total Deaths

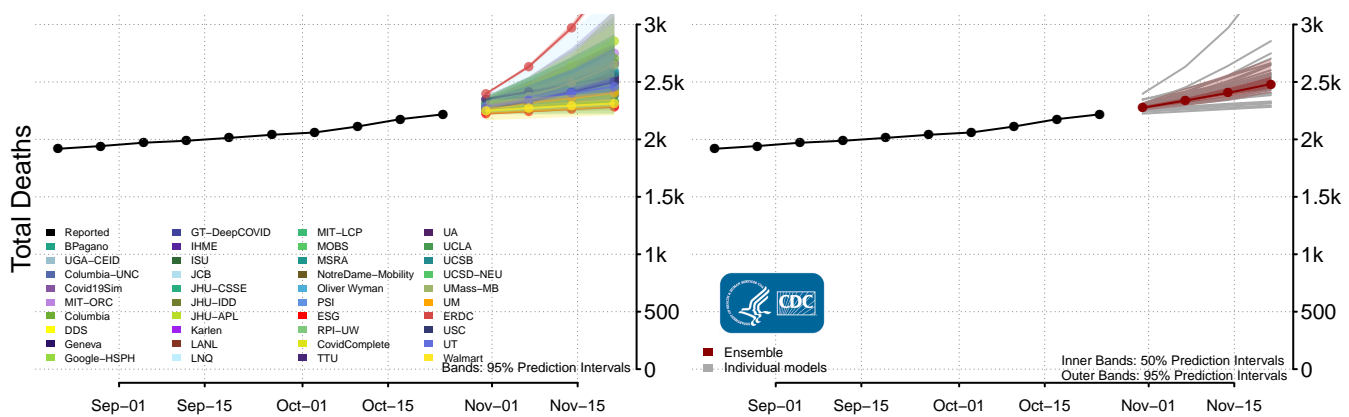
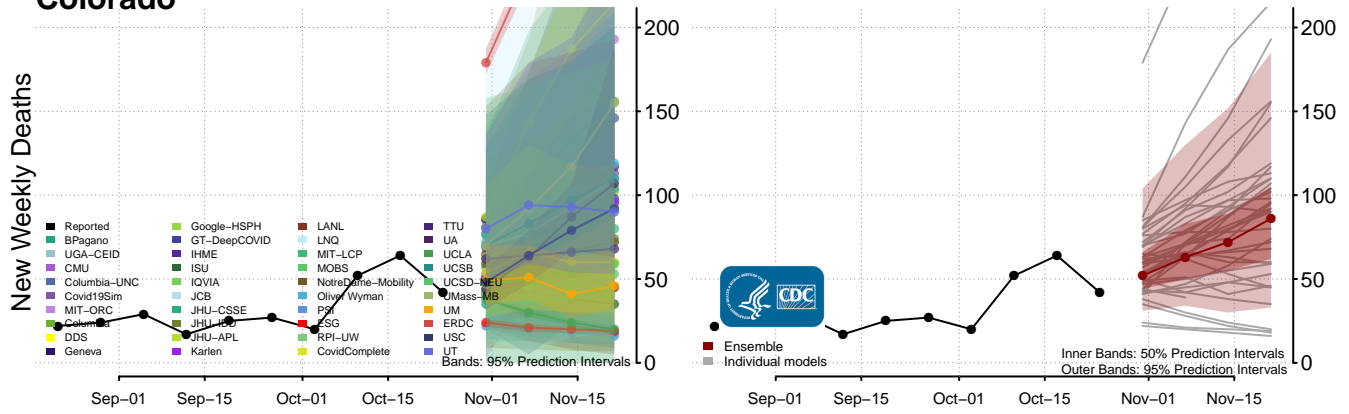




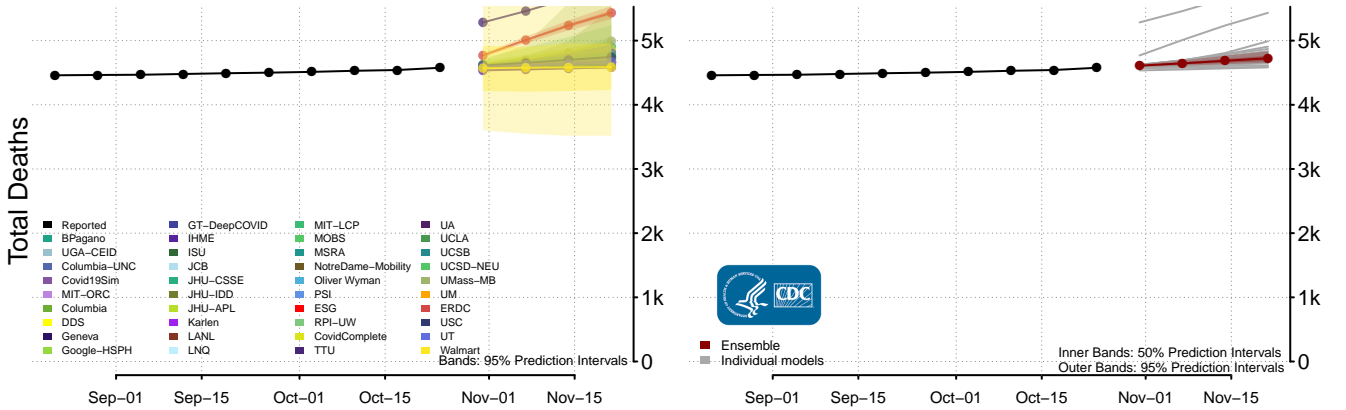
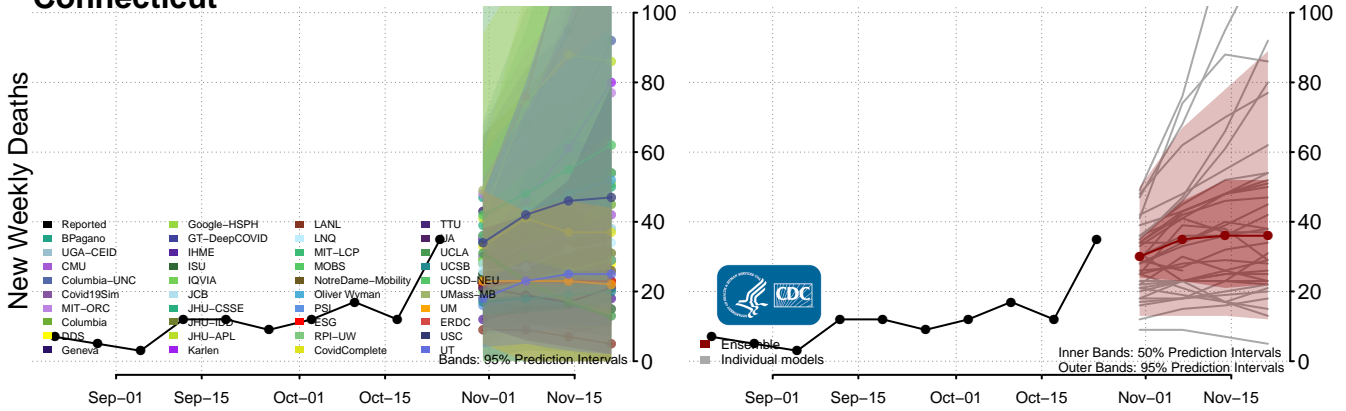
### California



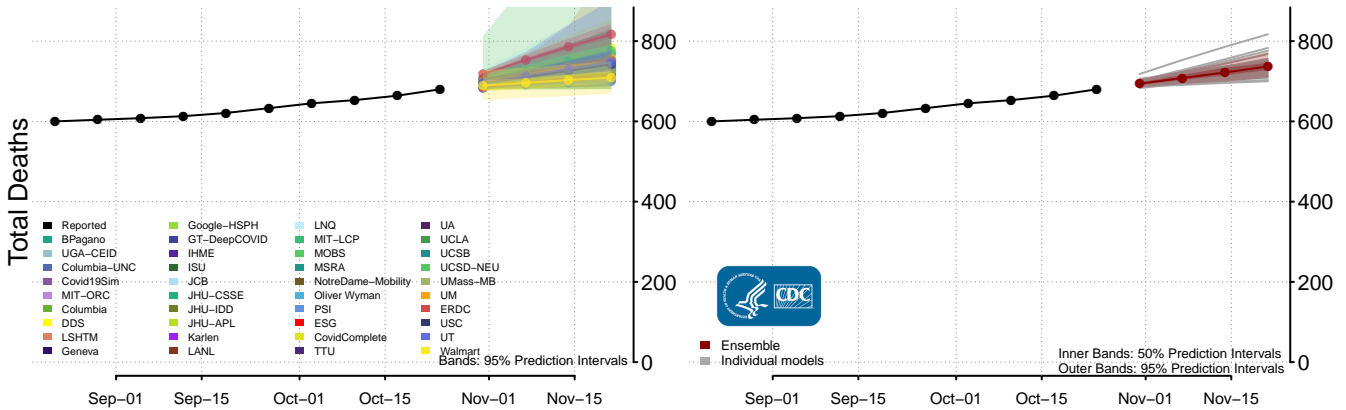
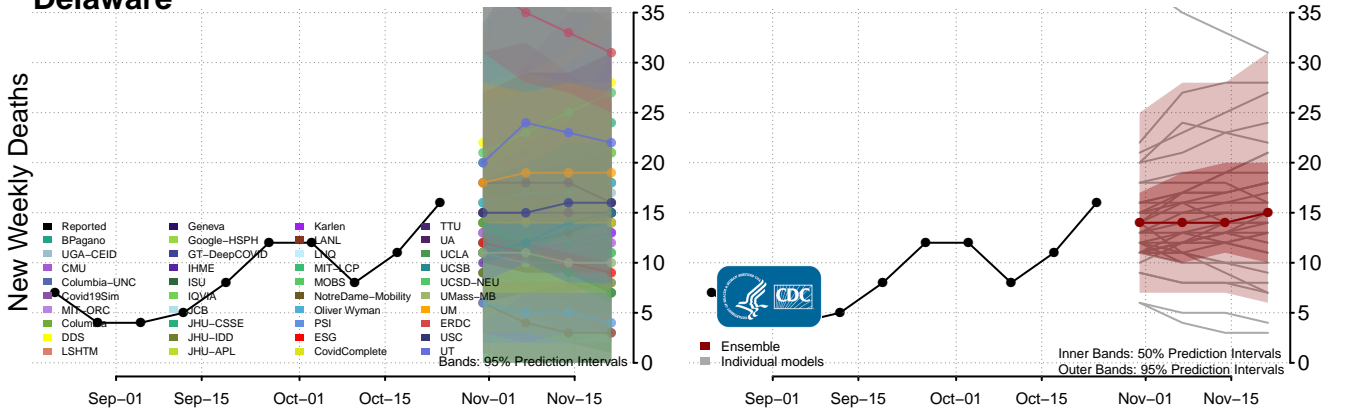
### Colorado



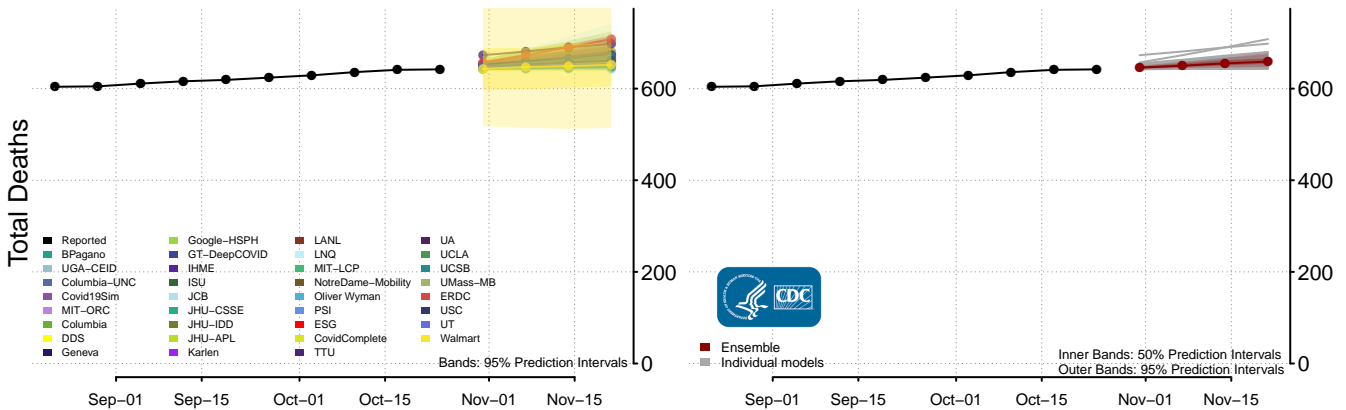
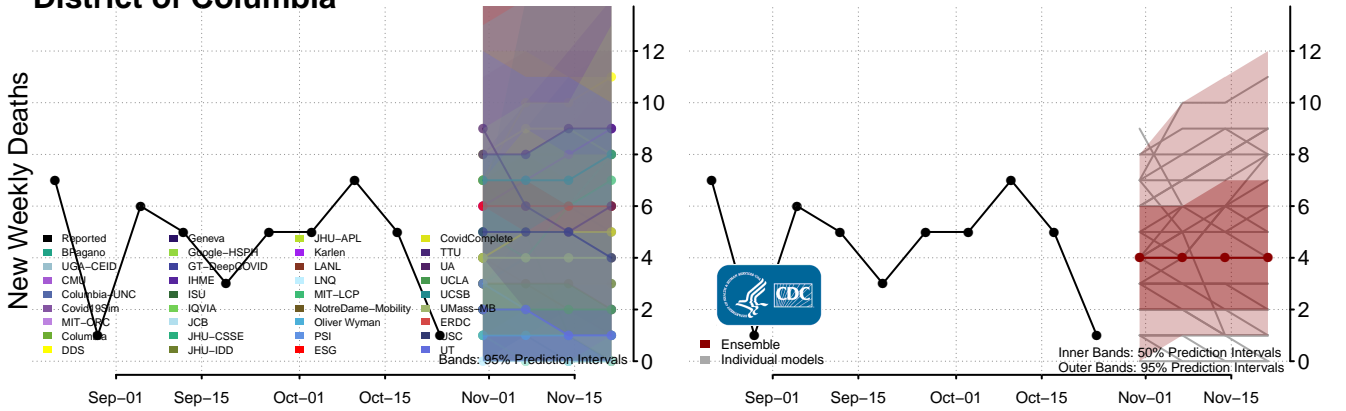
### Connecticut



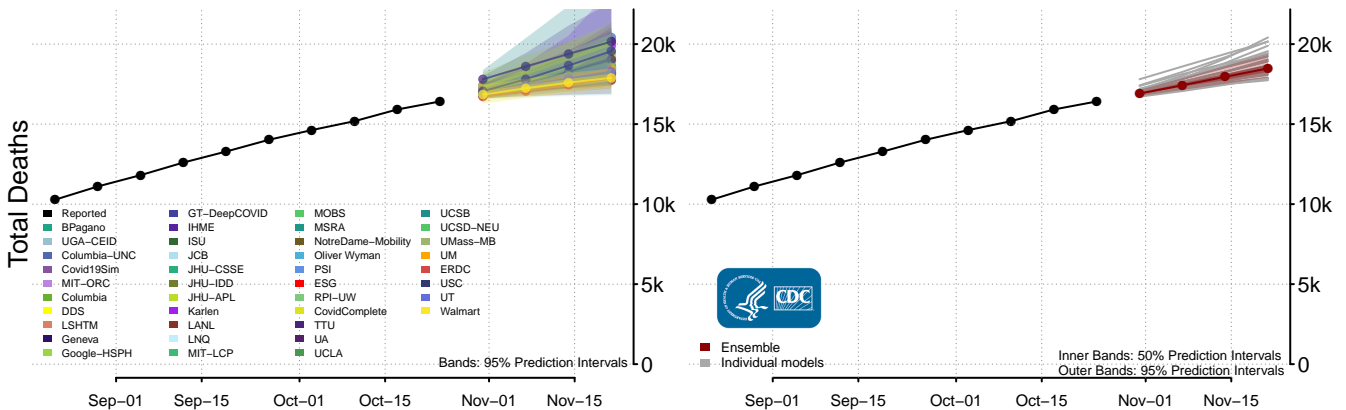
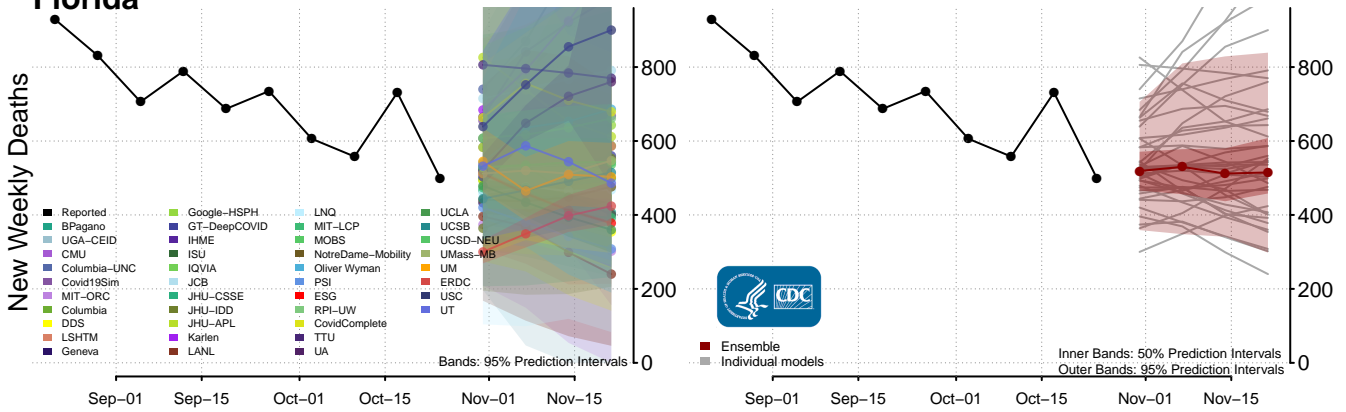
### Delaware



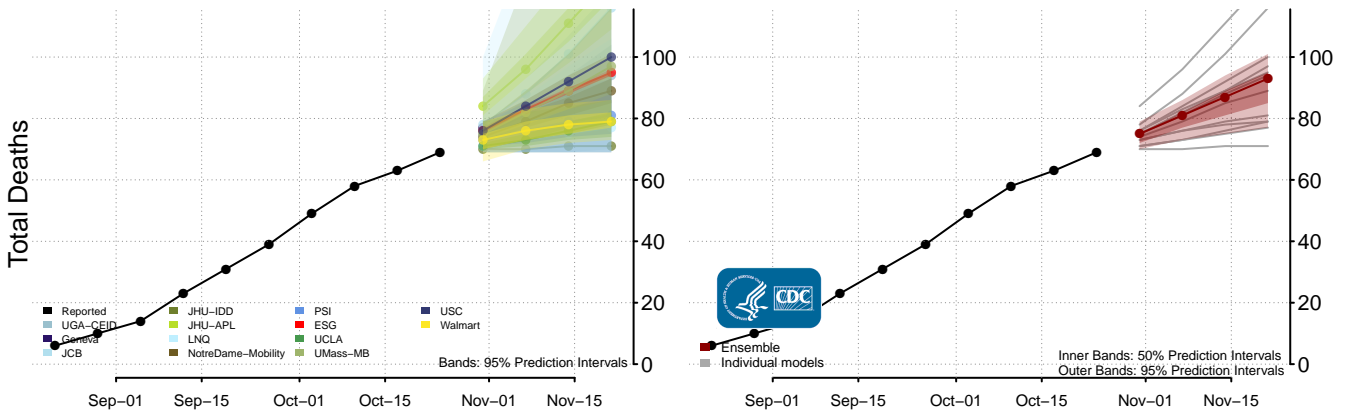
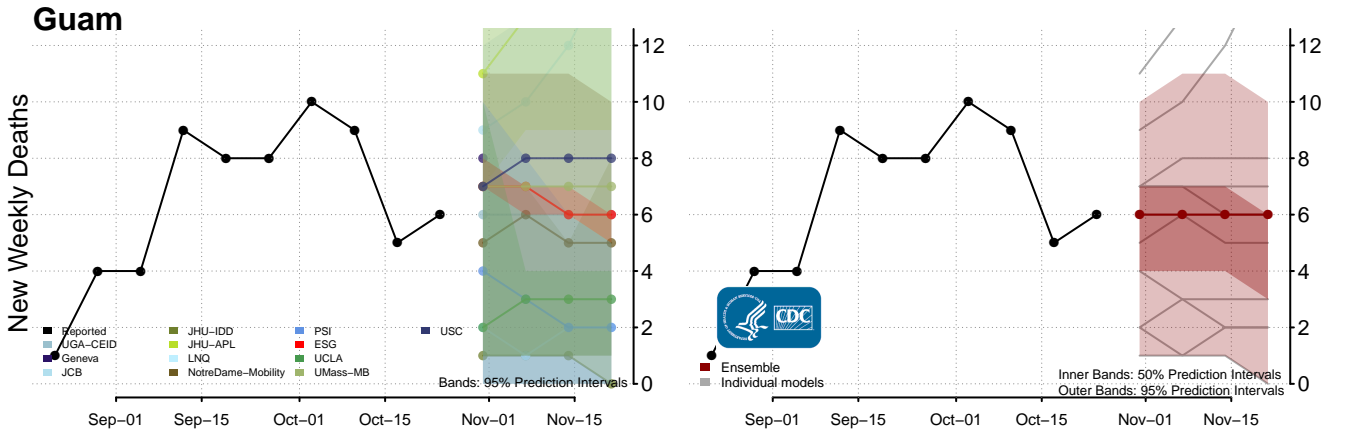
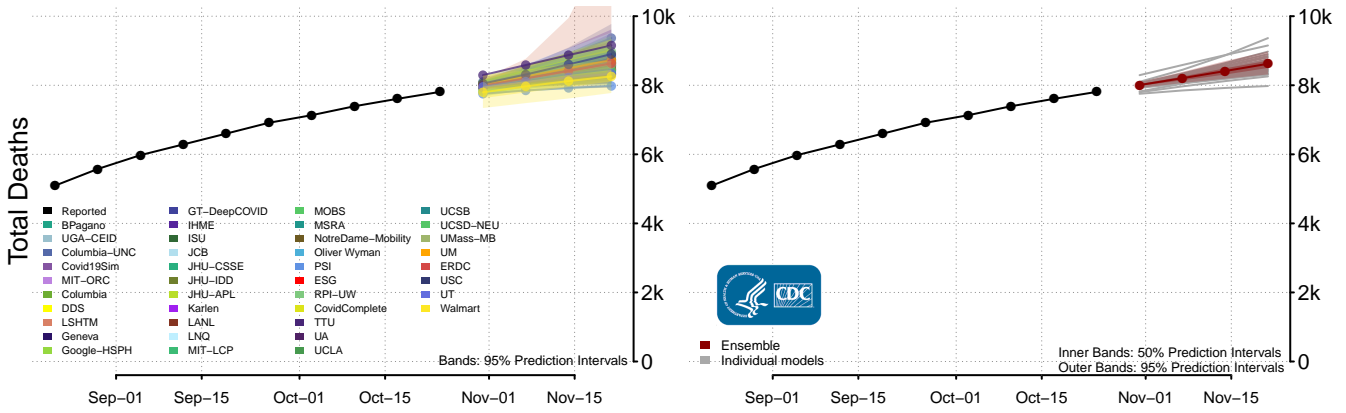
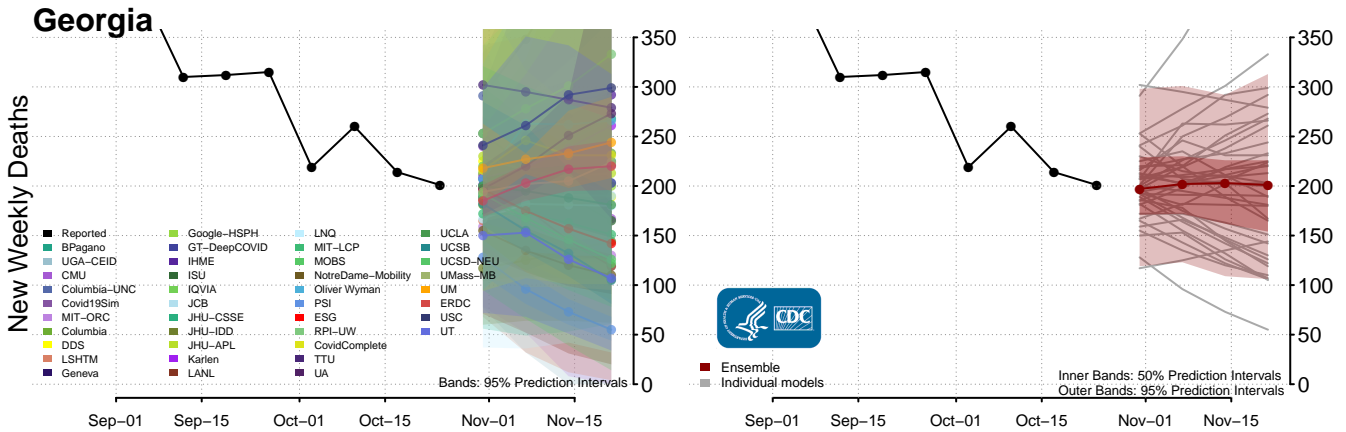
### District of Columbia



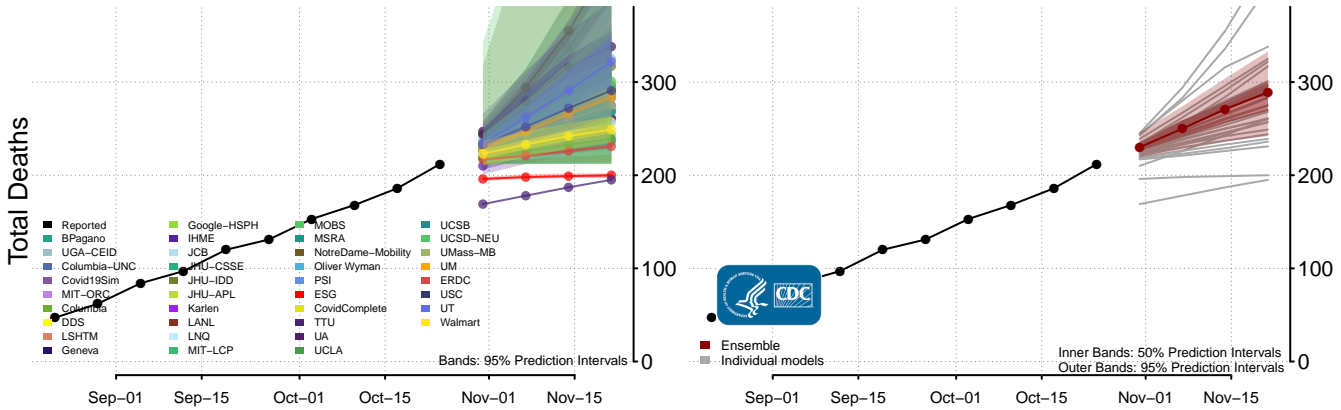
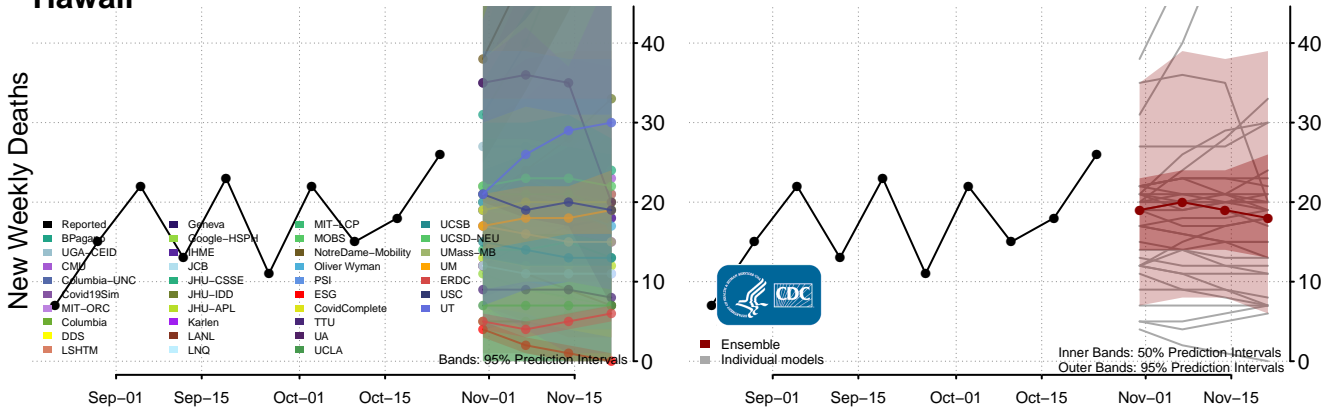
### Florida



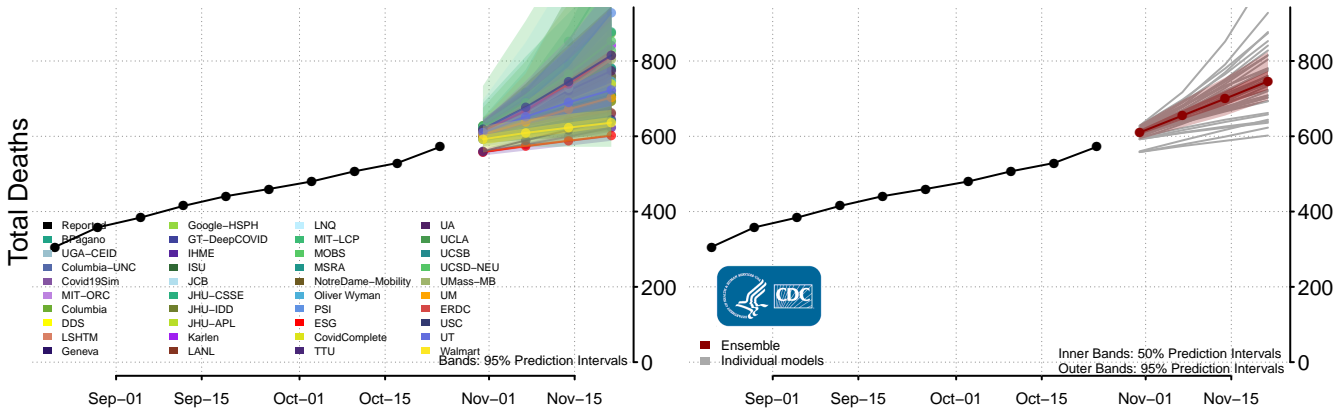
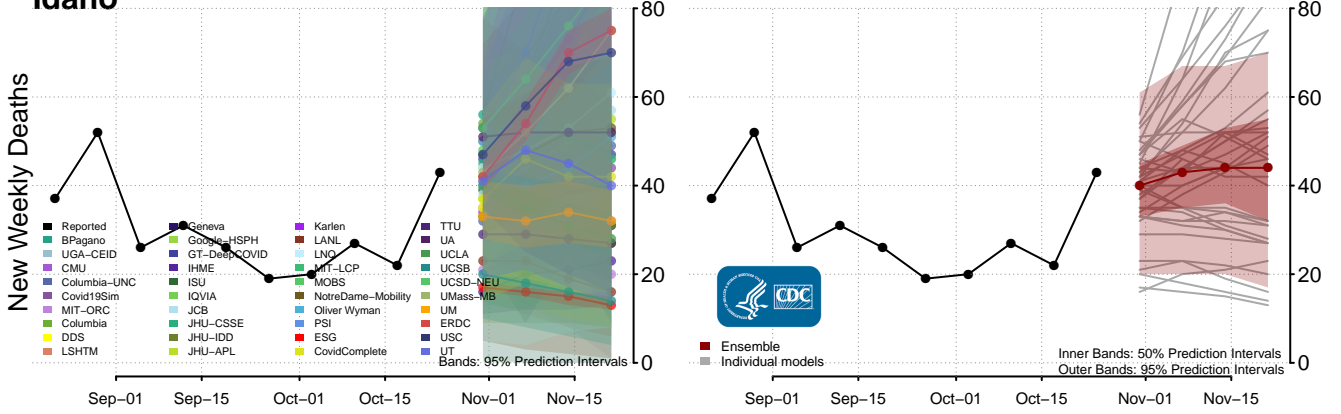




### Hawaii

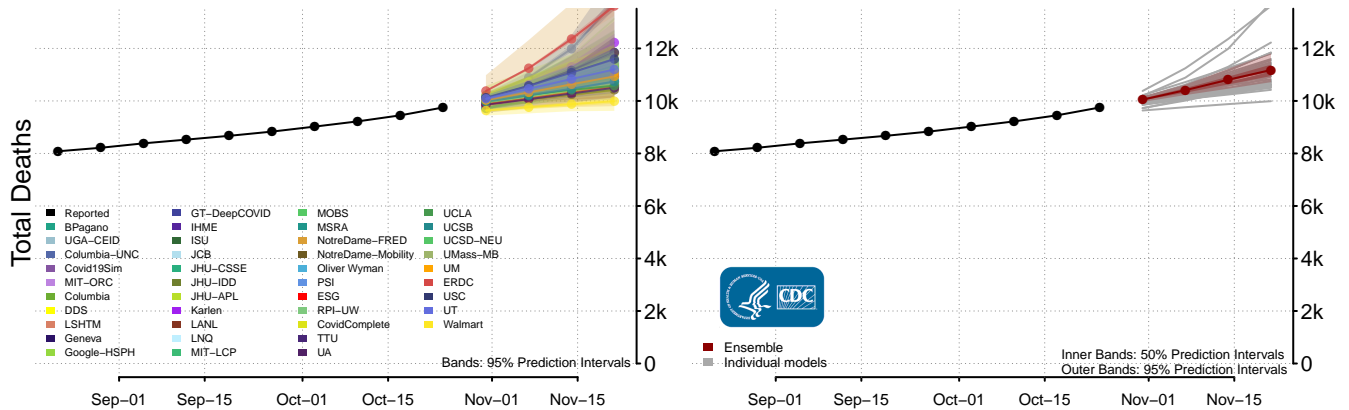
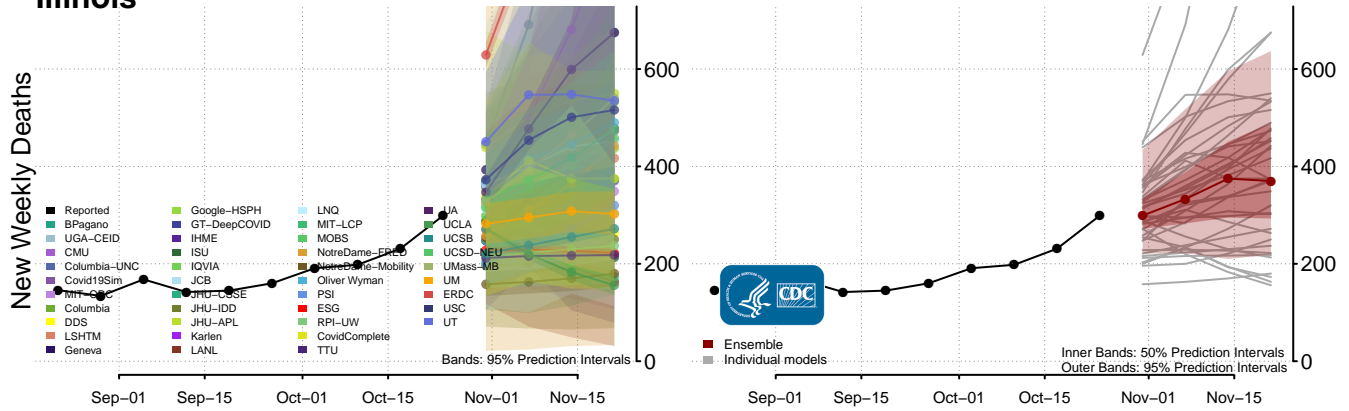


### Idaho

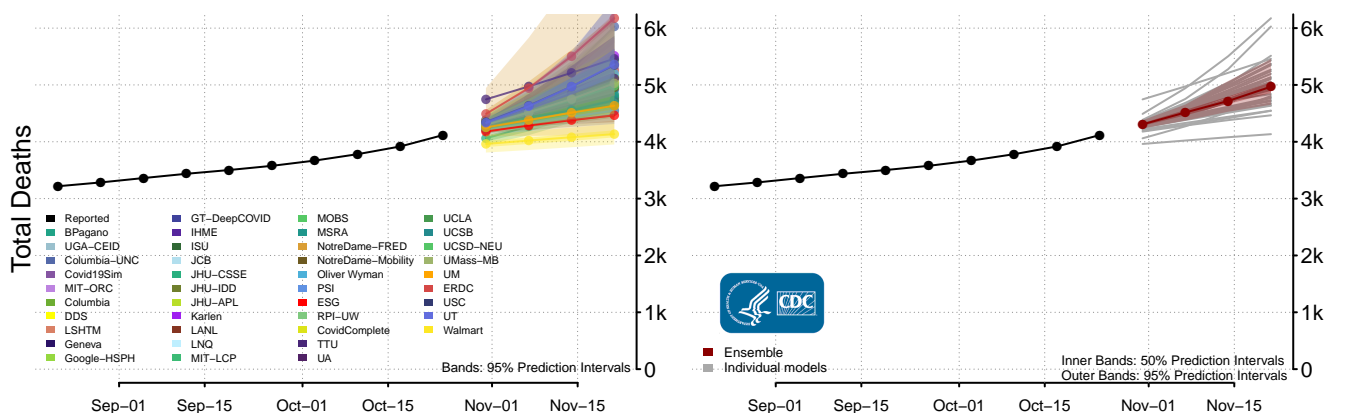
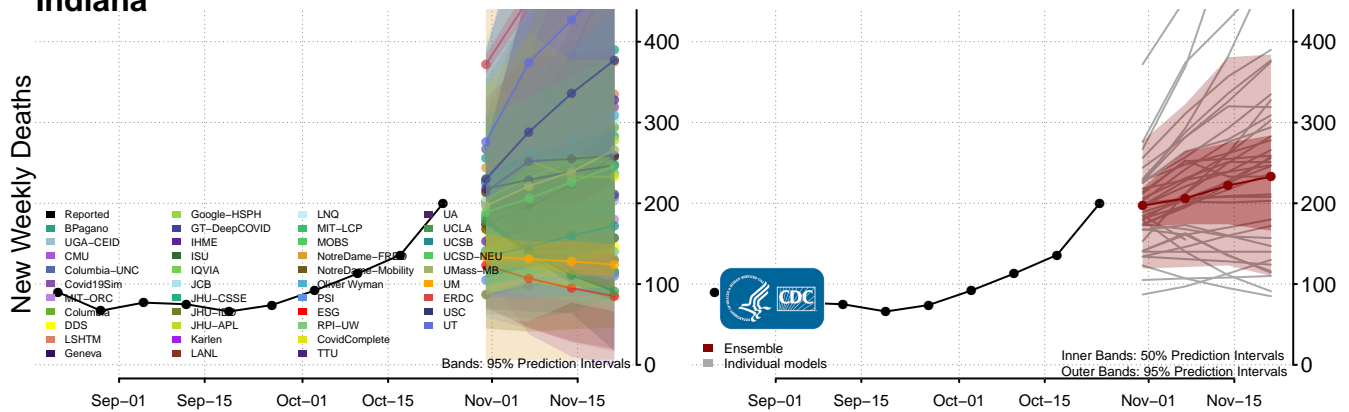


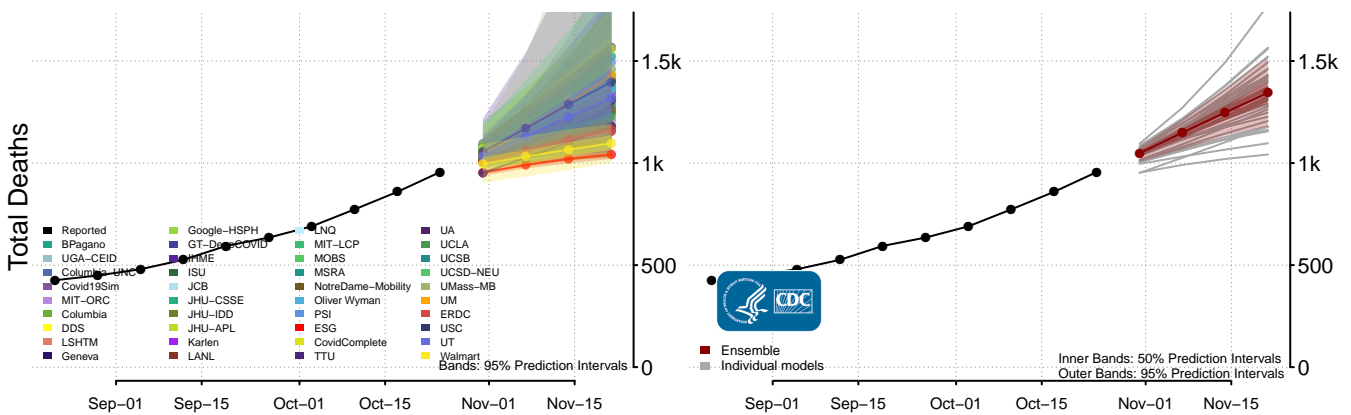
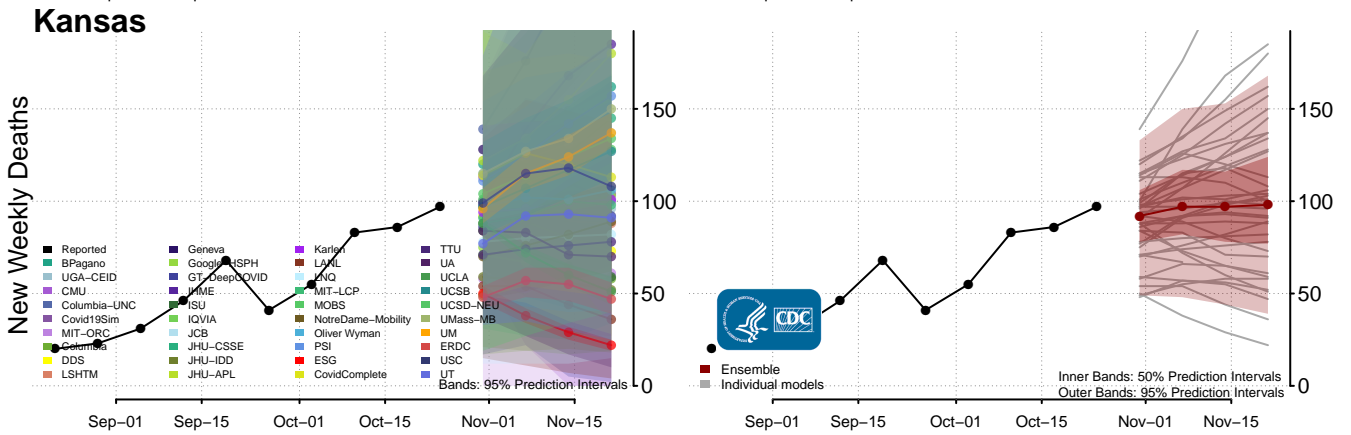
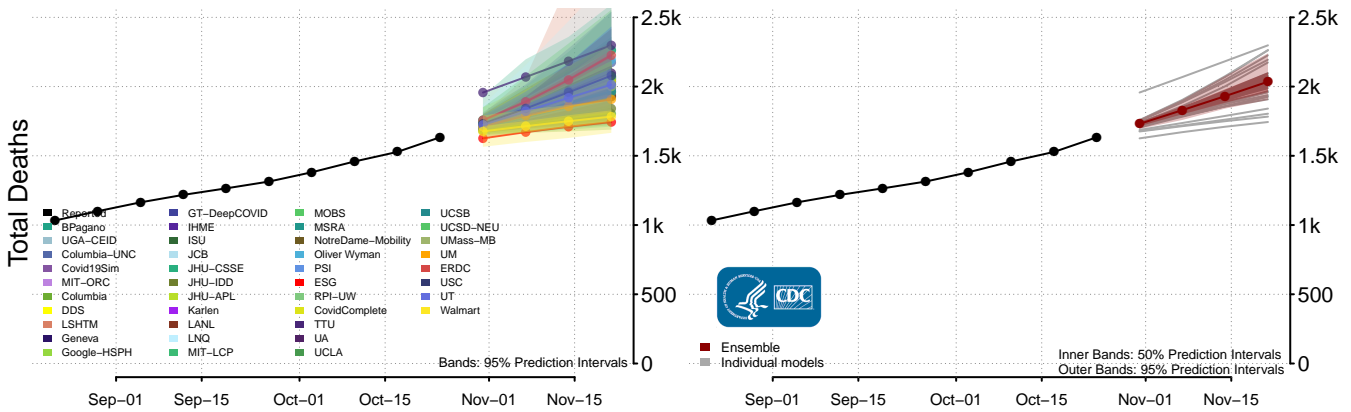
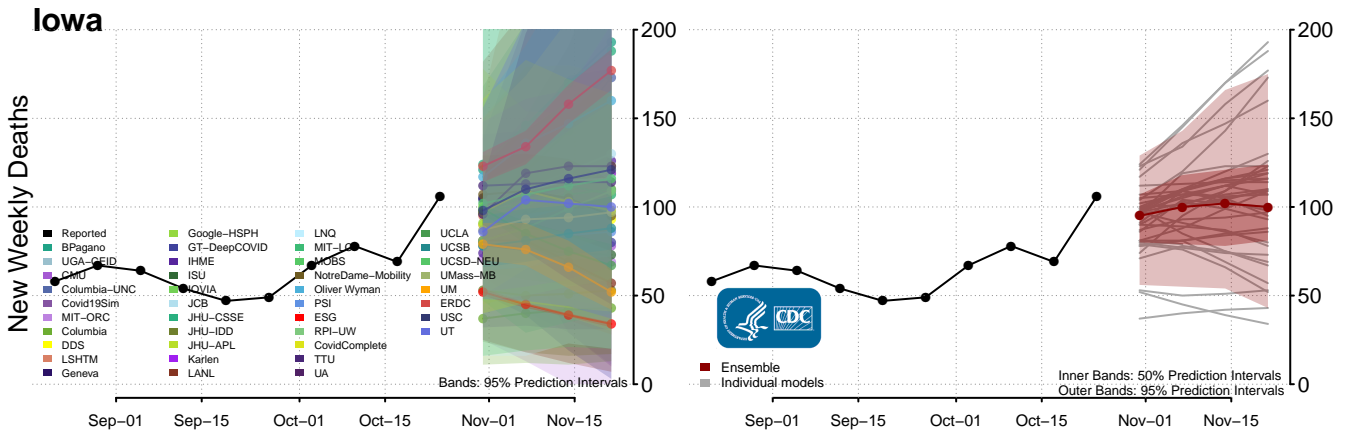


### Illinois

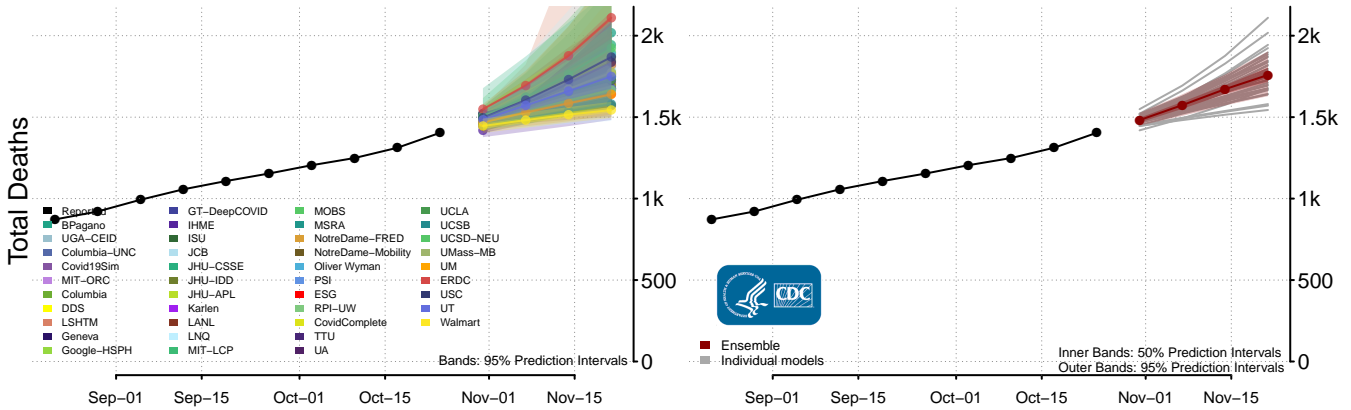
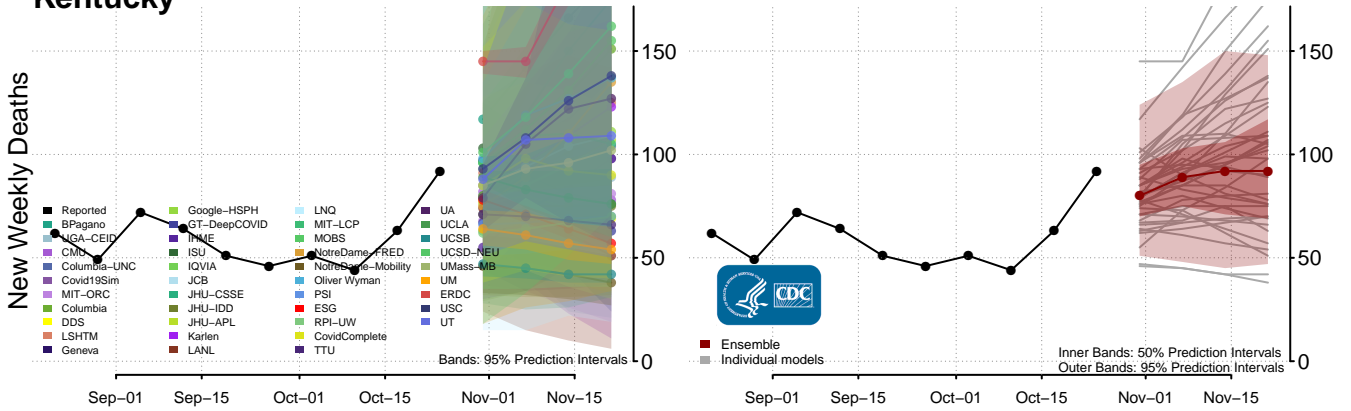


### Indiana

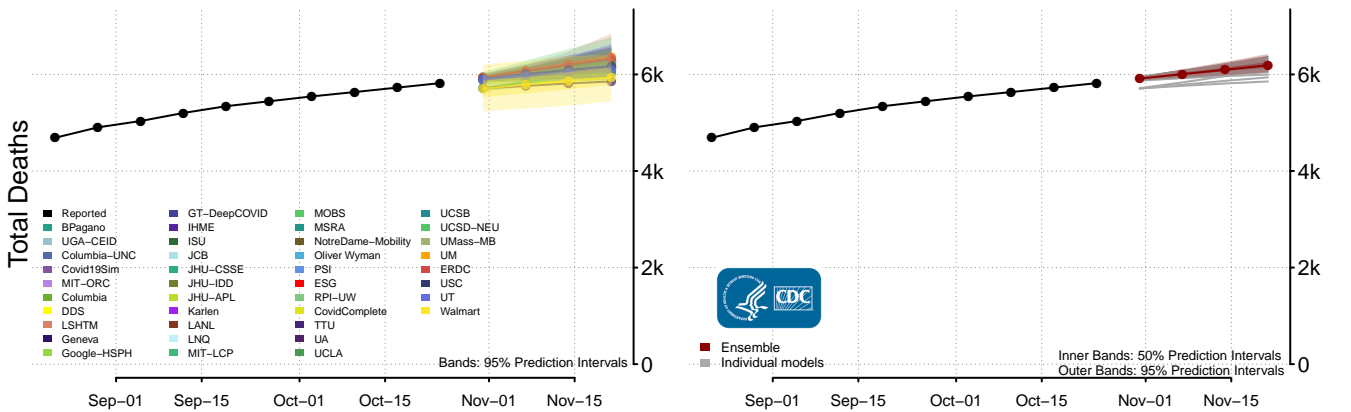
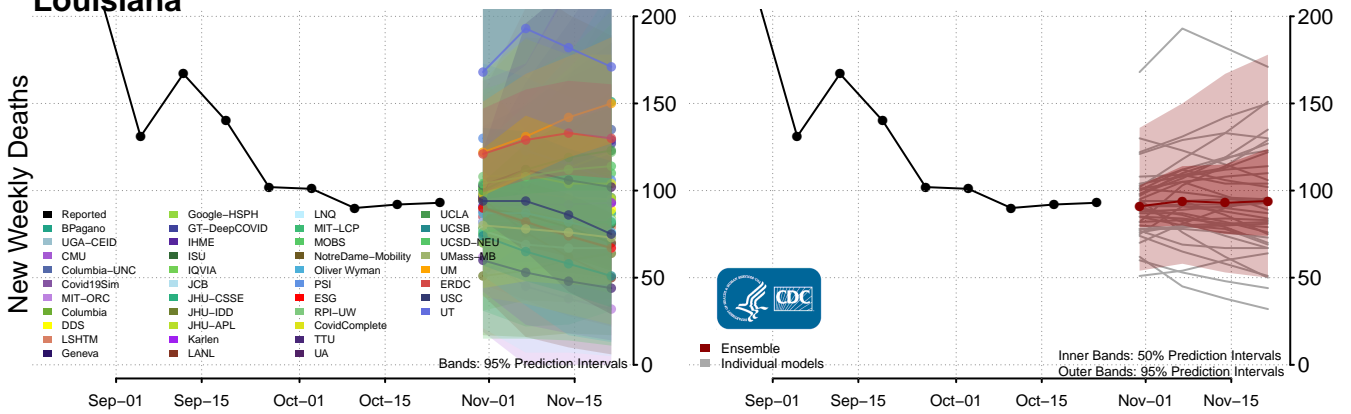




### Kentucky

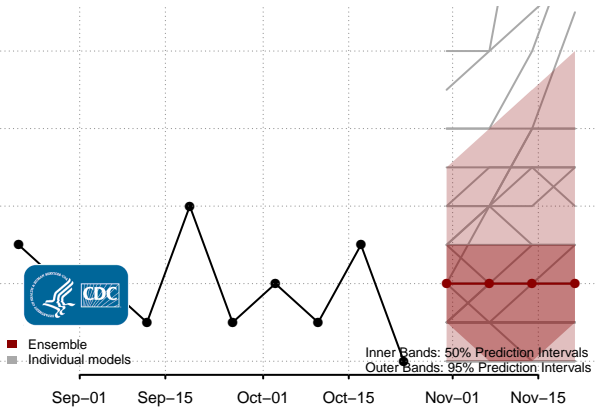
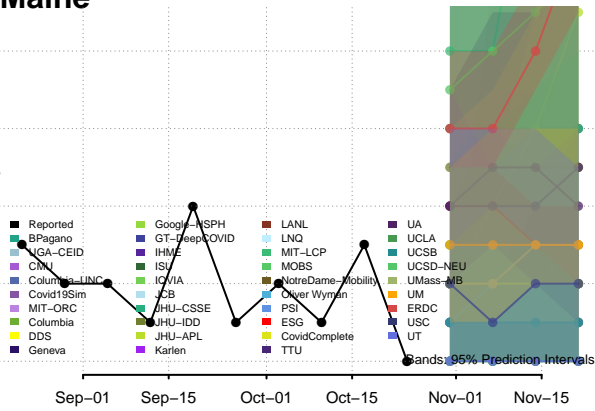


### Louisiana

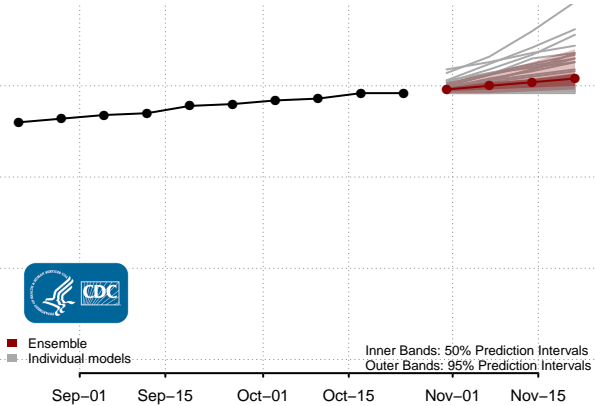
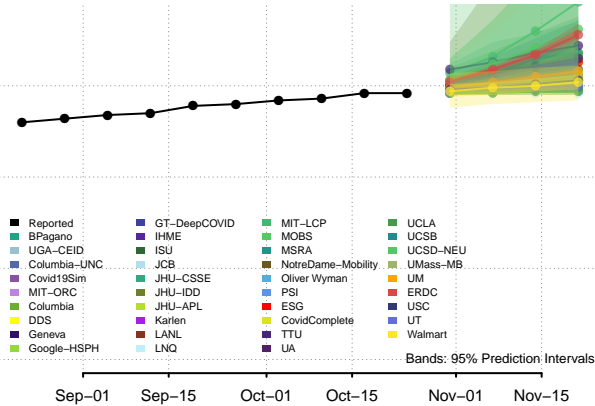


### Maine

New Weekly Deaths

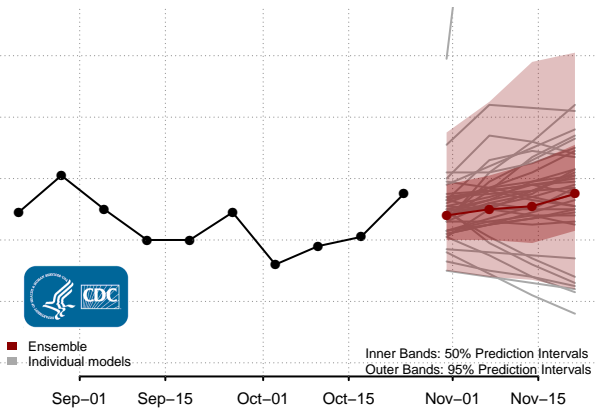
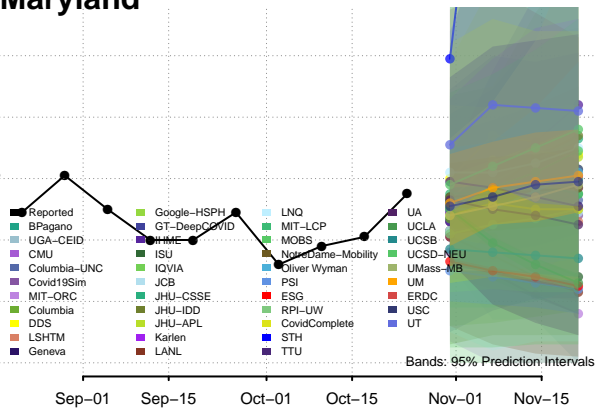


Total Deaths

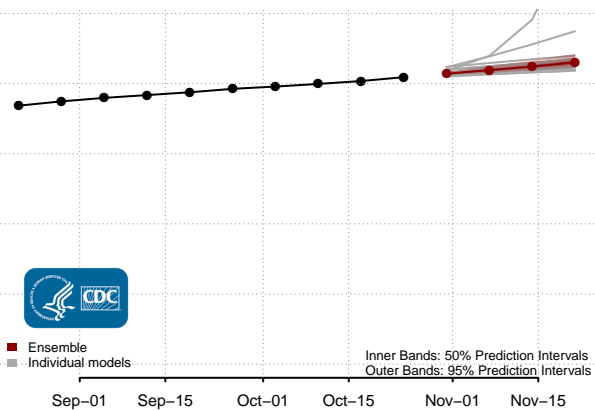
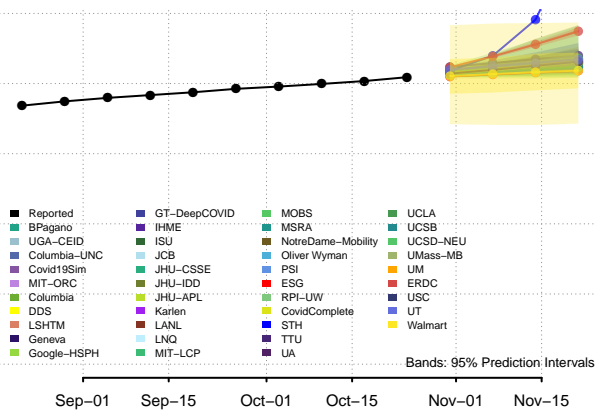


### Maryland

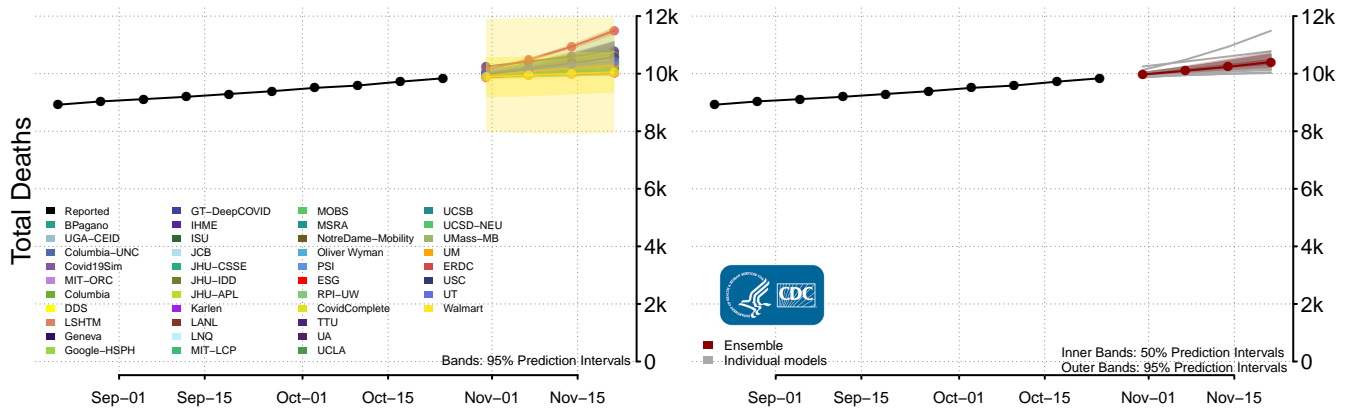
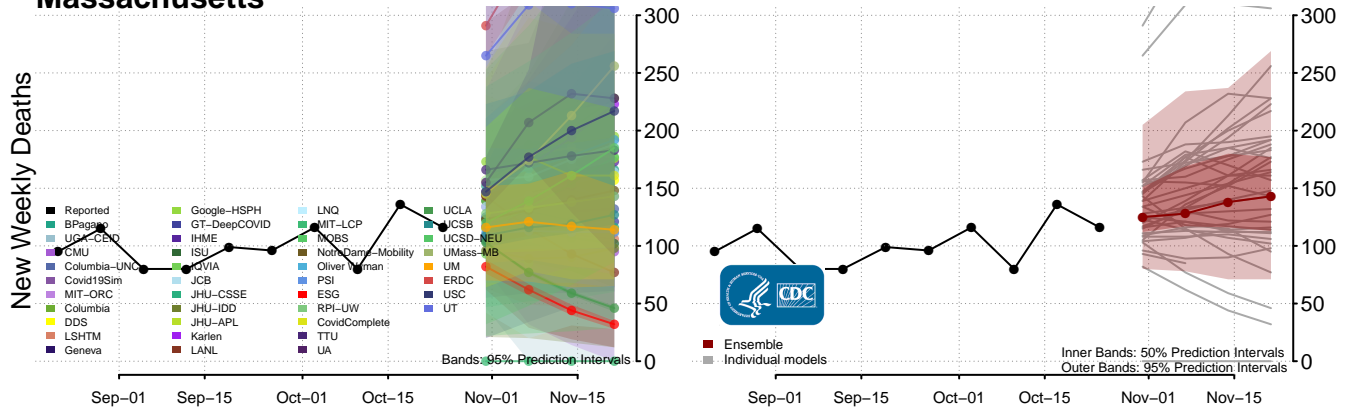
New Weekly Deaths



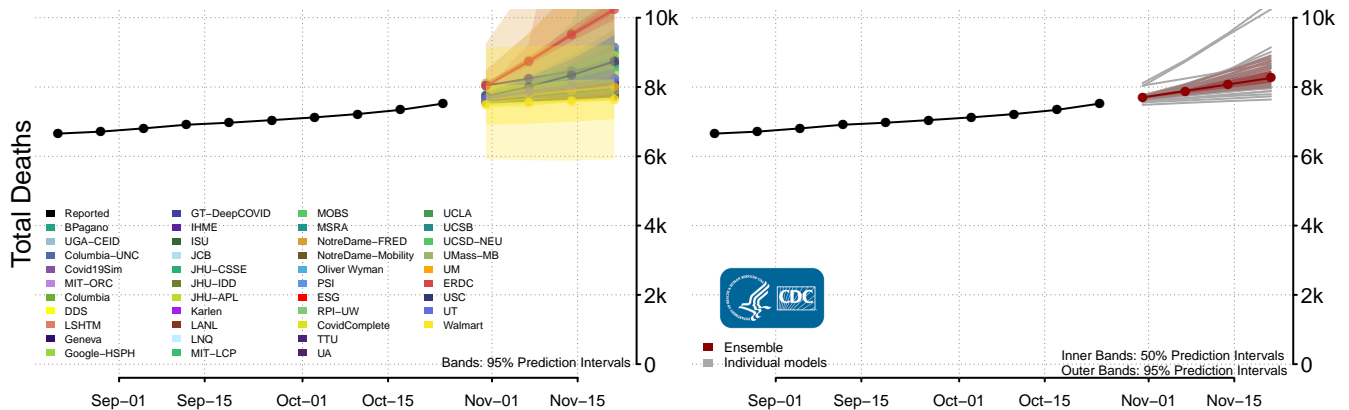
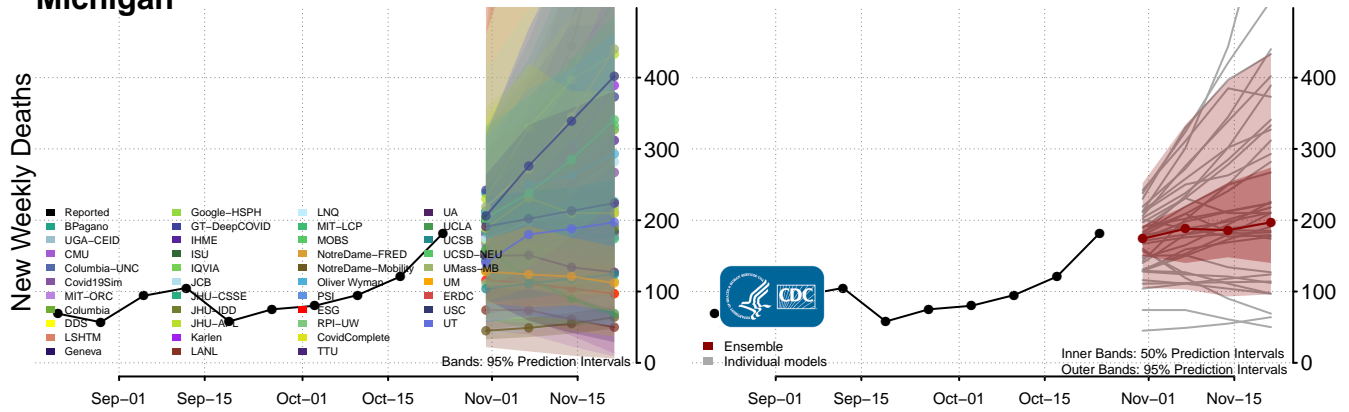
Total Deaths



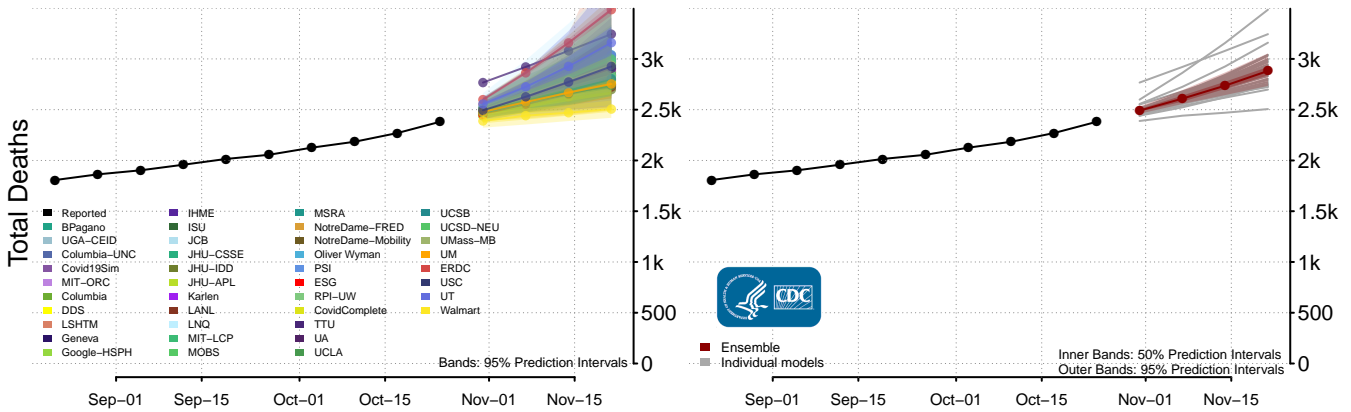
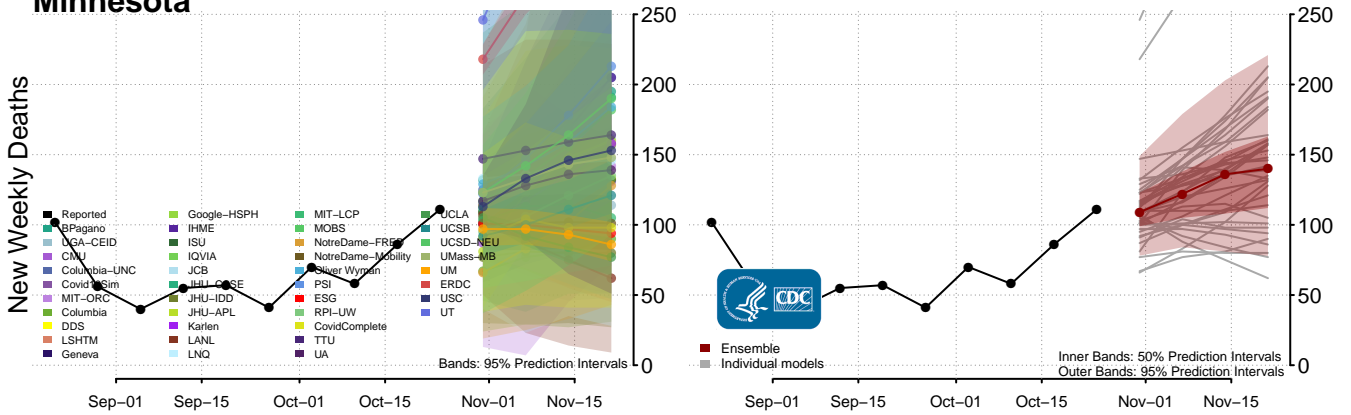
### Massachusetts



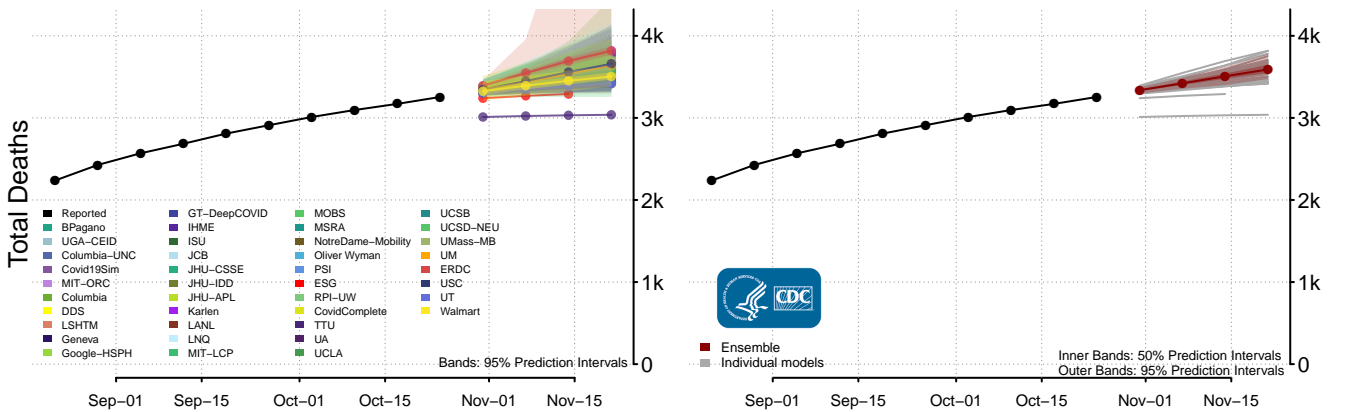
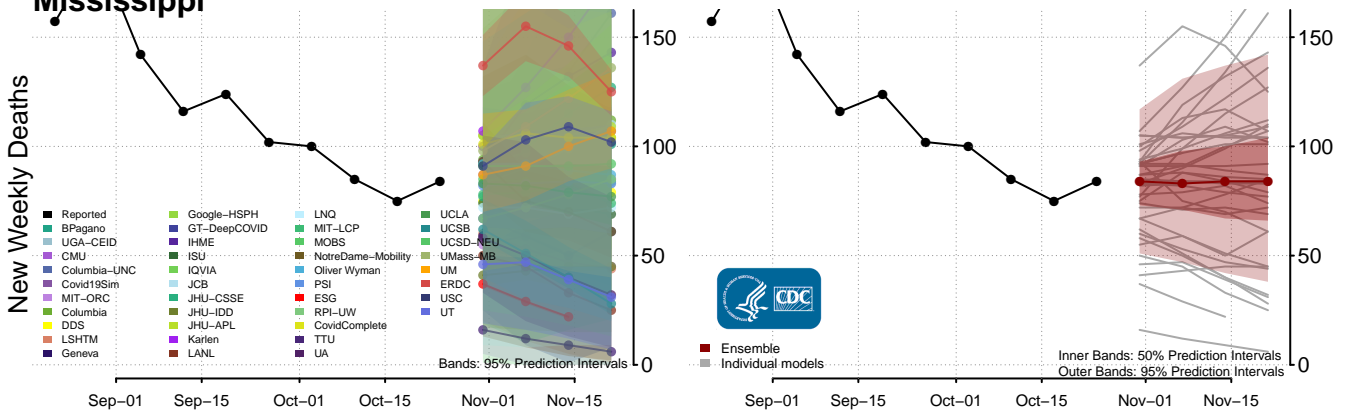
### Michigan



### Minnesota\*\*



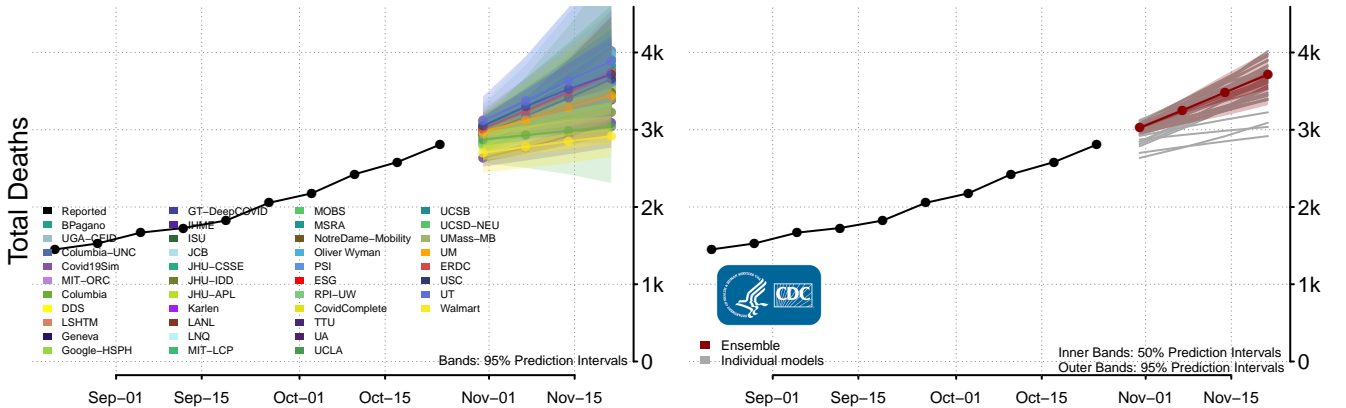
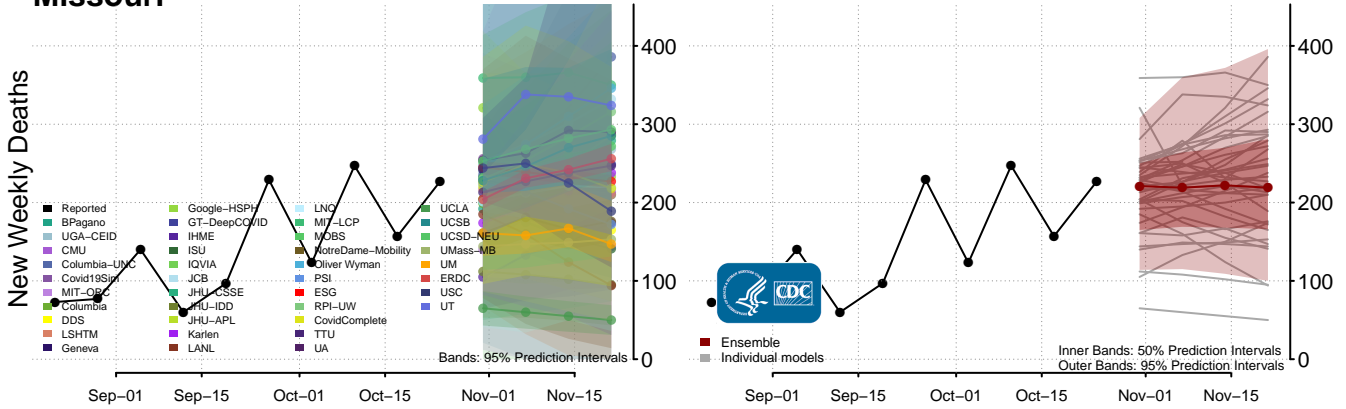
### Mississippi



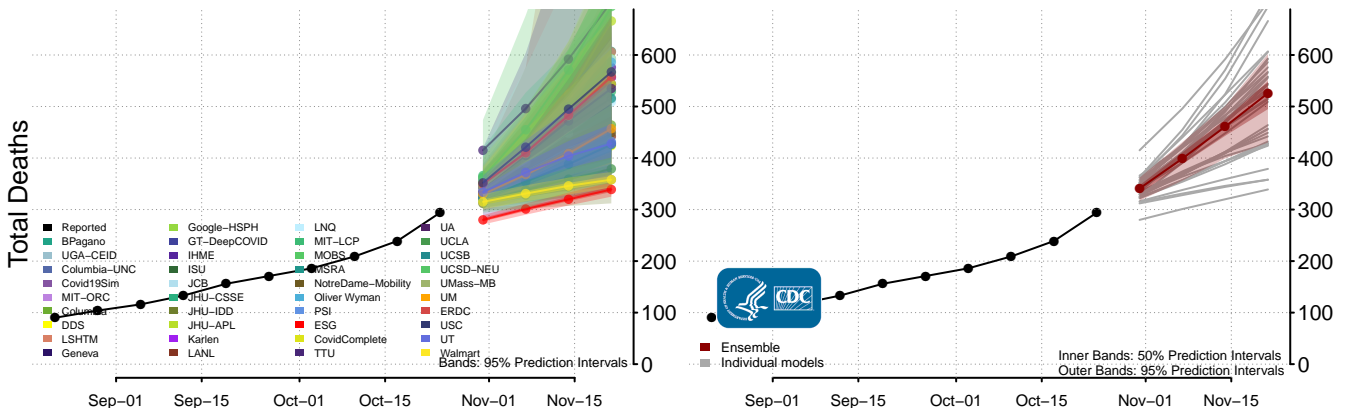
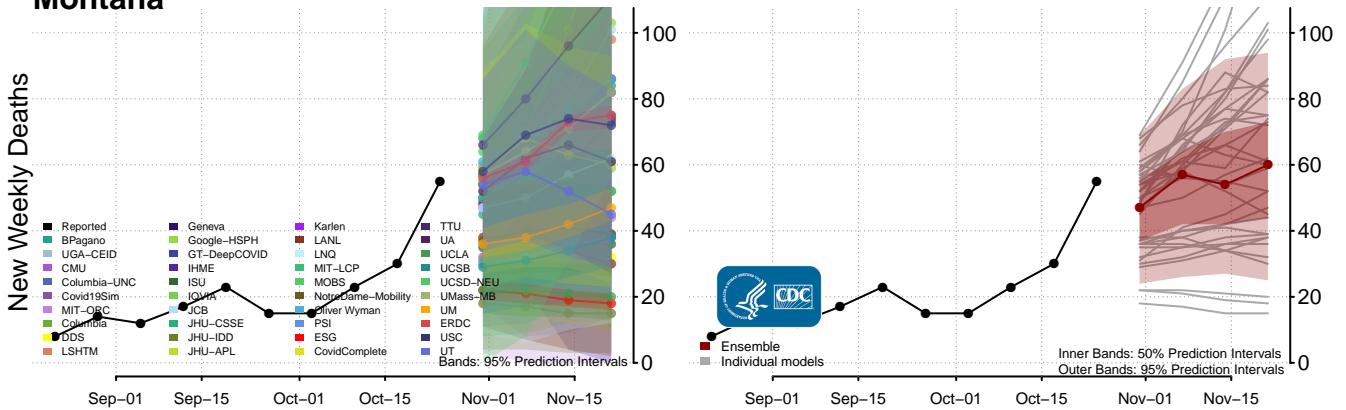
\*\*New weekly deaths may increase in this location over the next four weeks. For these locations, the ensemble forecast indicates a probability of 0.75 or greater that more deaths will be reported in week four of the forecast than in the last reported week.



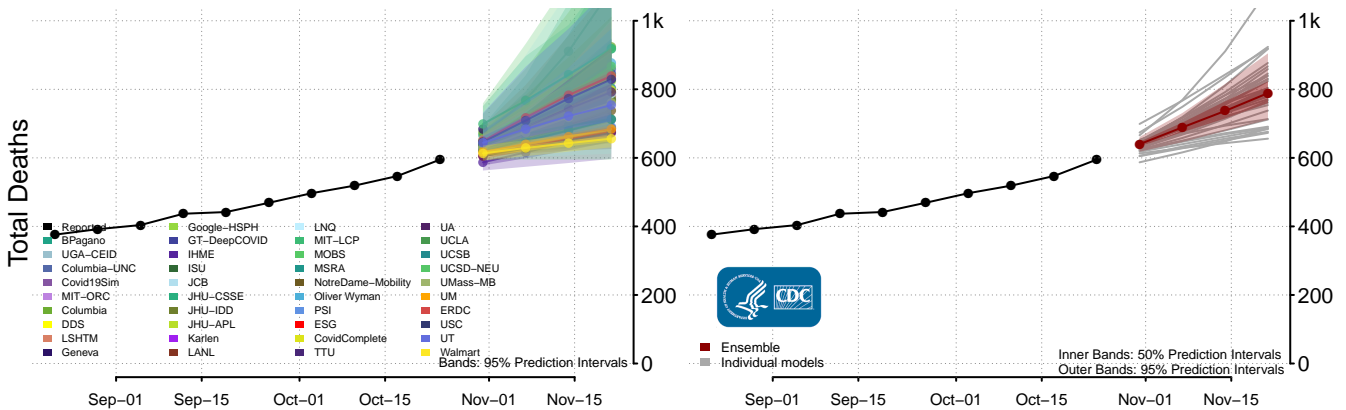
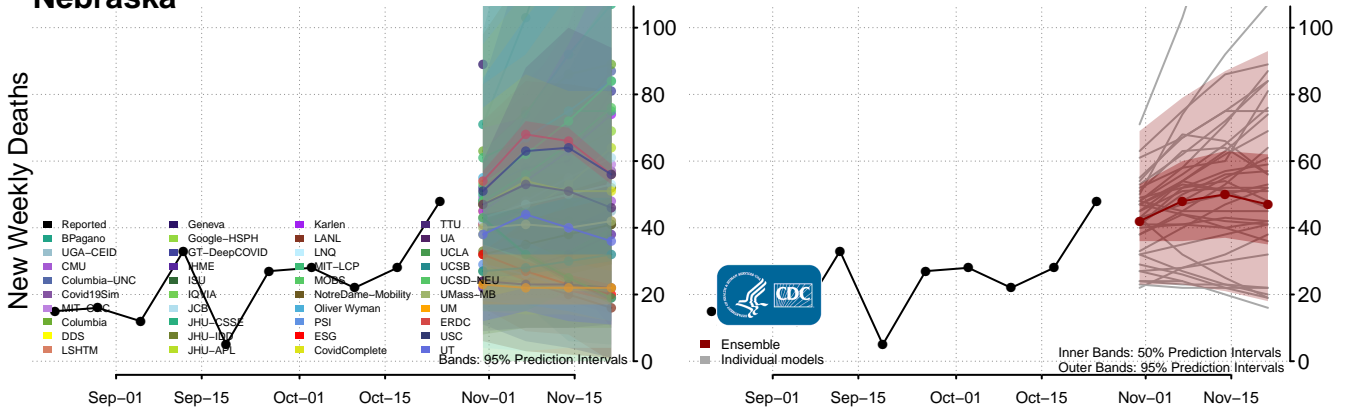
### Missouri



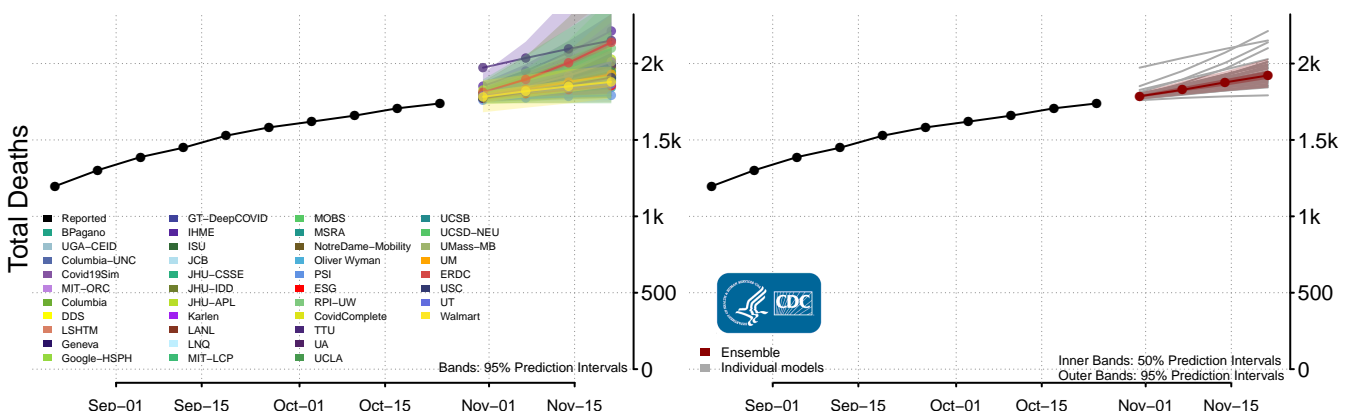
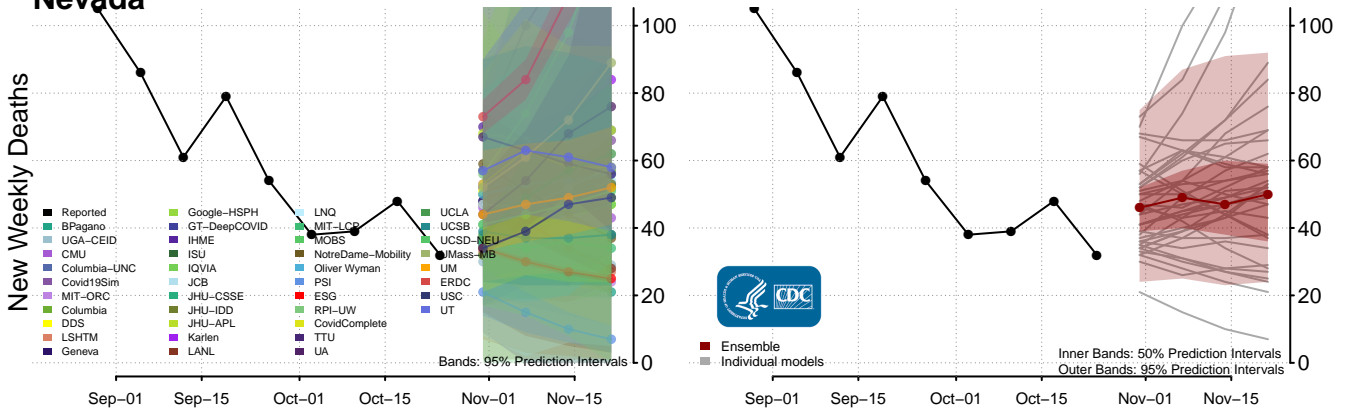
### Montana



# Nebraska

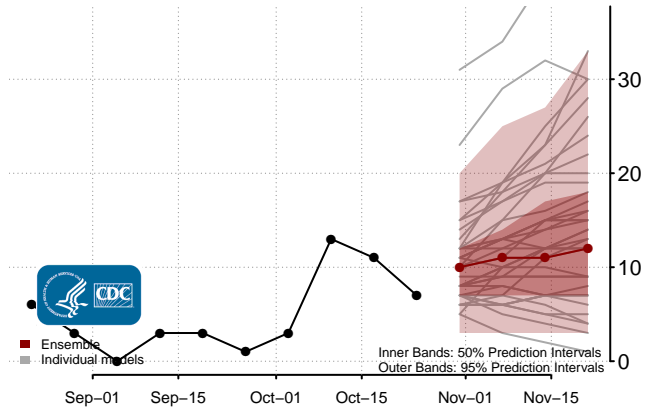
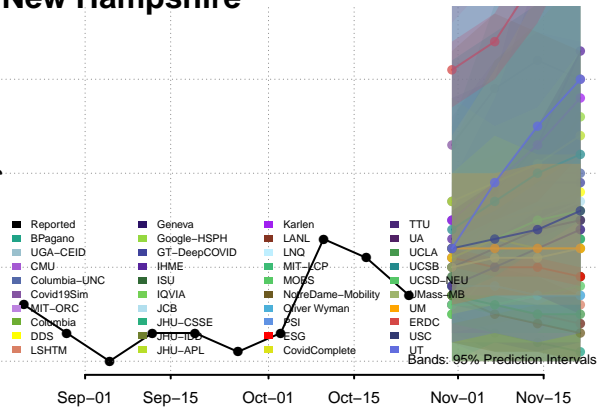


# Nevada

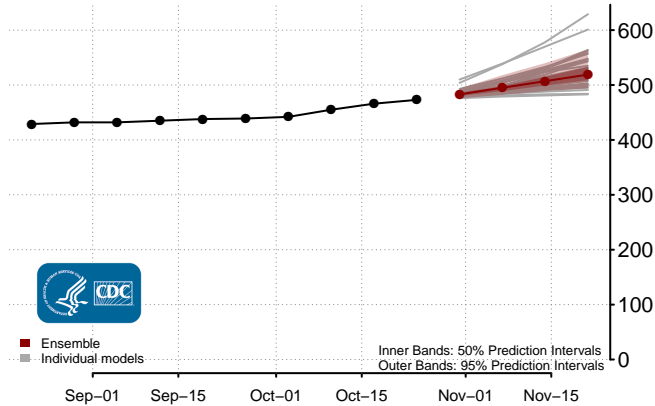
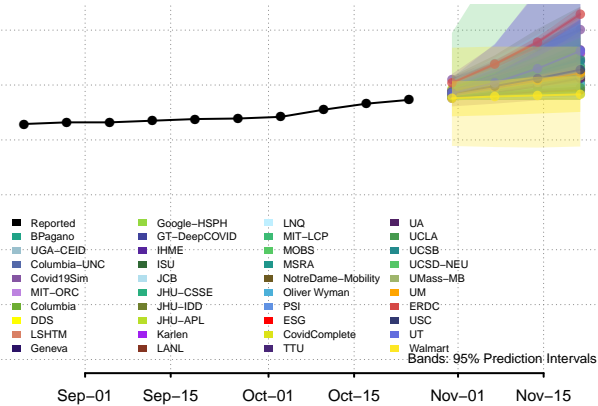


### New Hampshire

New Weekly Deaths

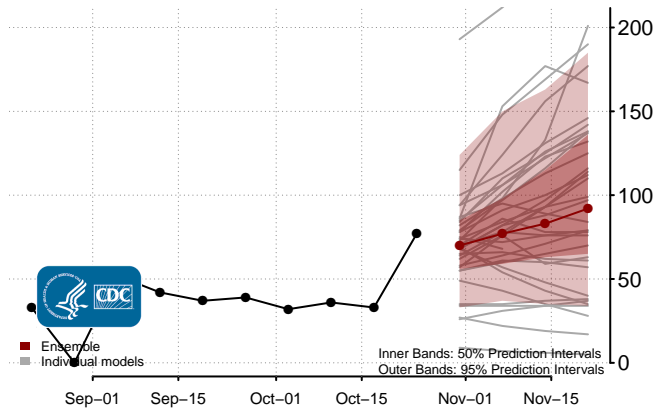
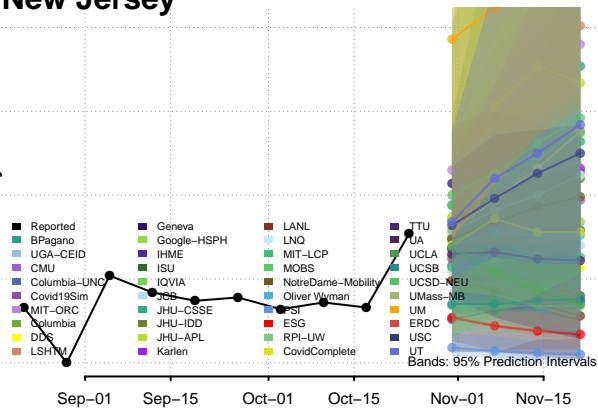


Total Deaths

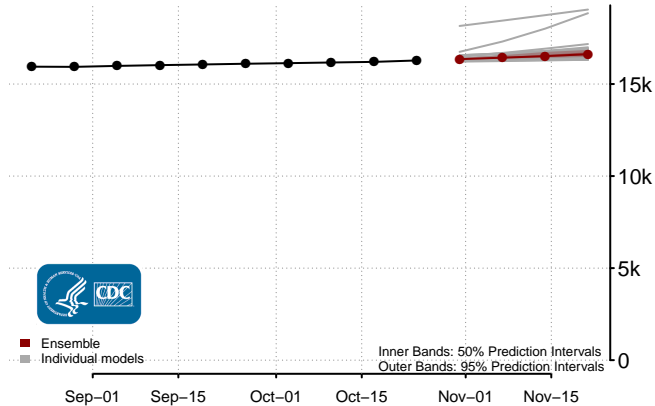
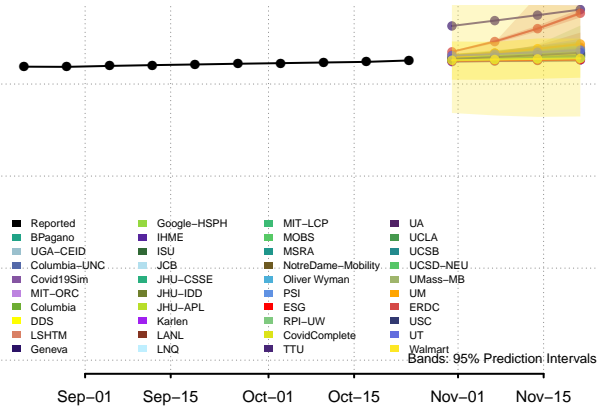


### New Jersey

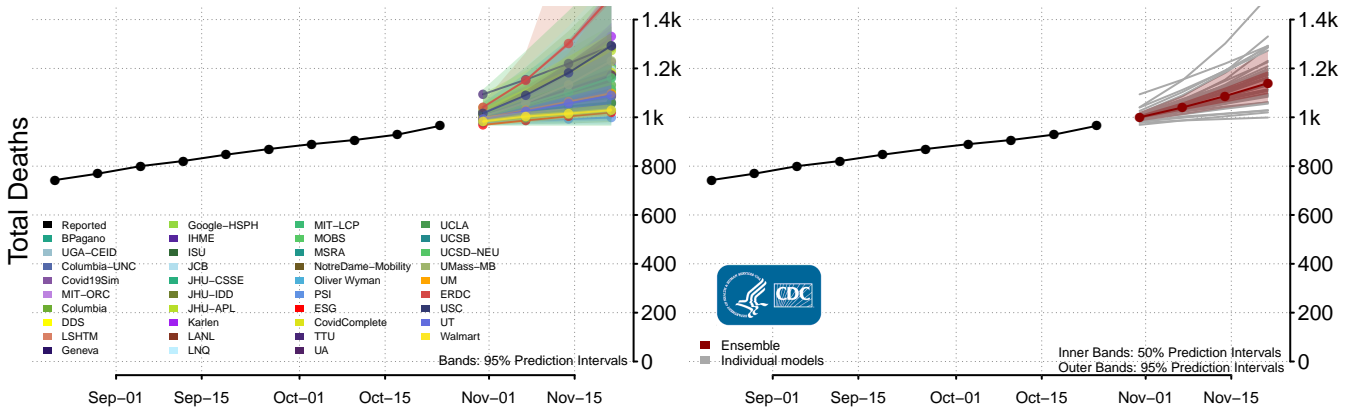
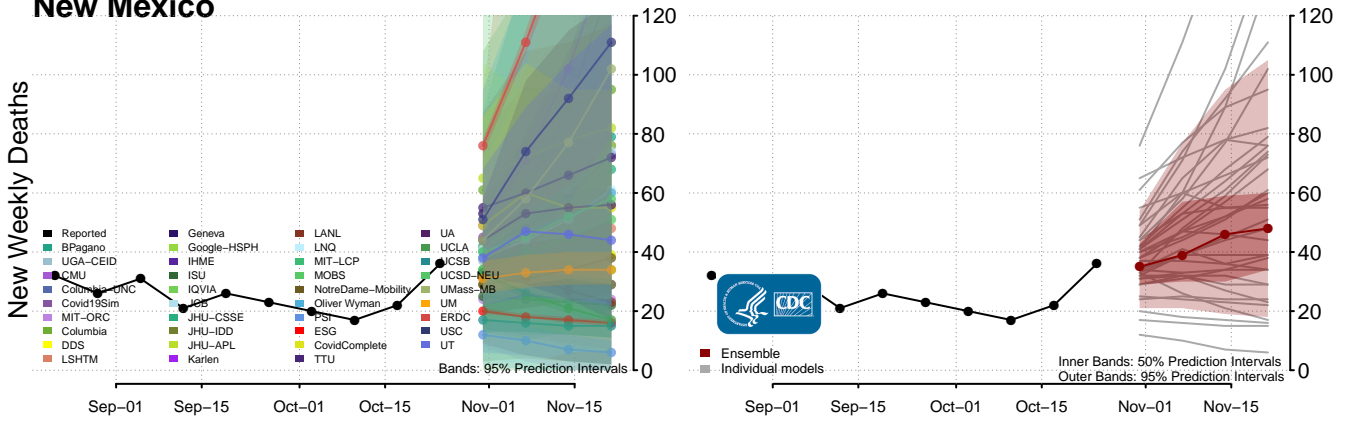
New Weekly Deaths



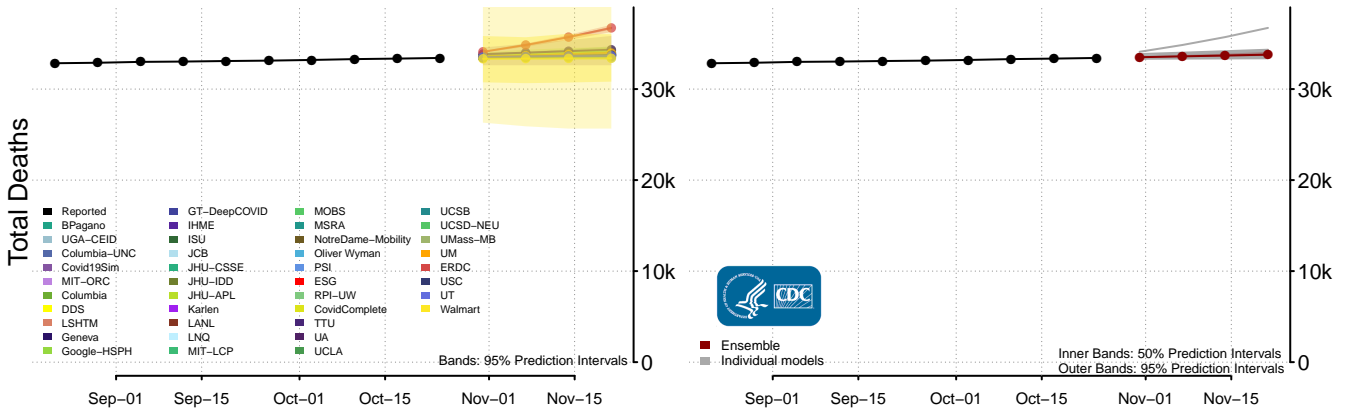
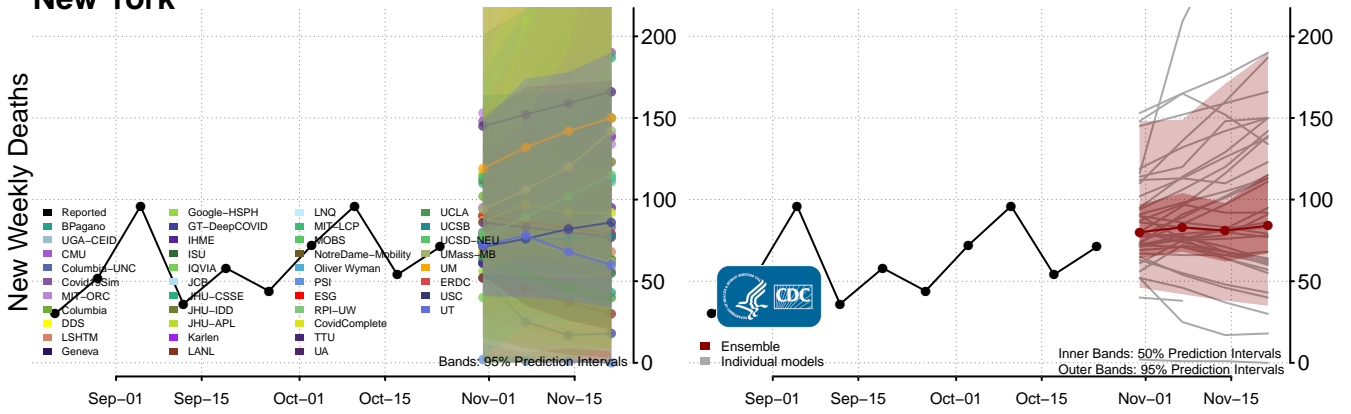
Total Deaths



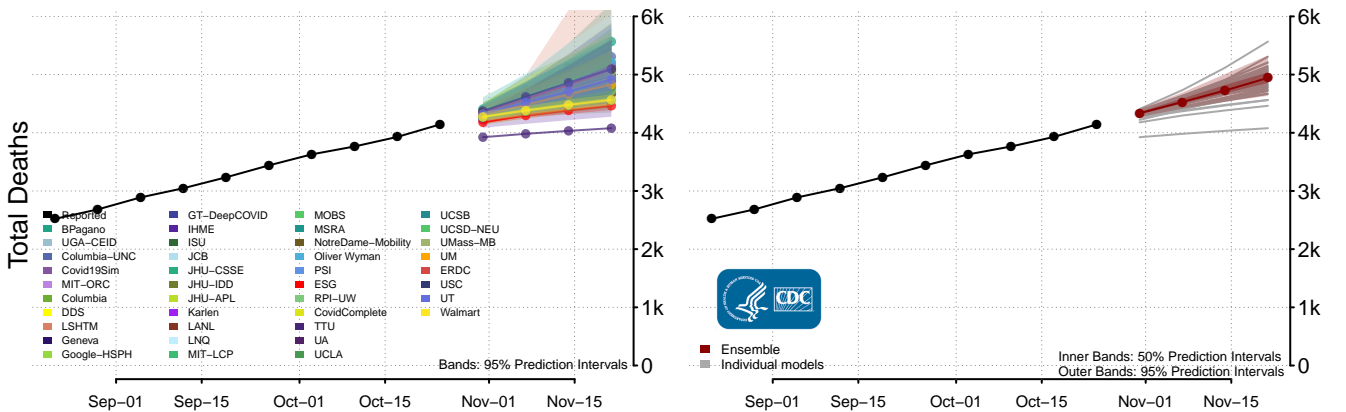
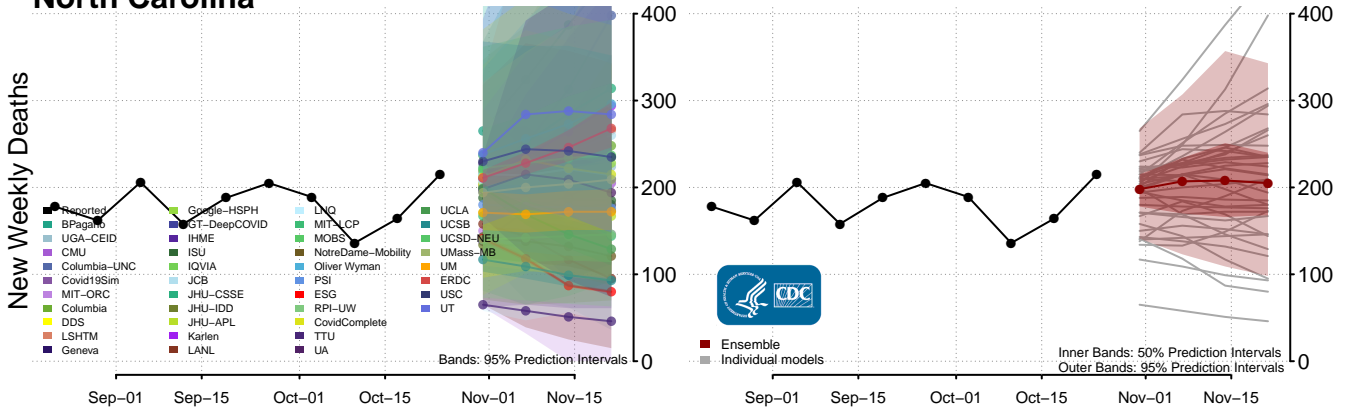
### New Mexico



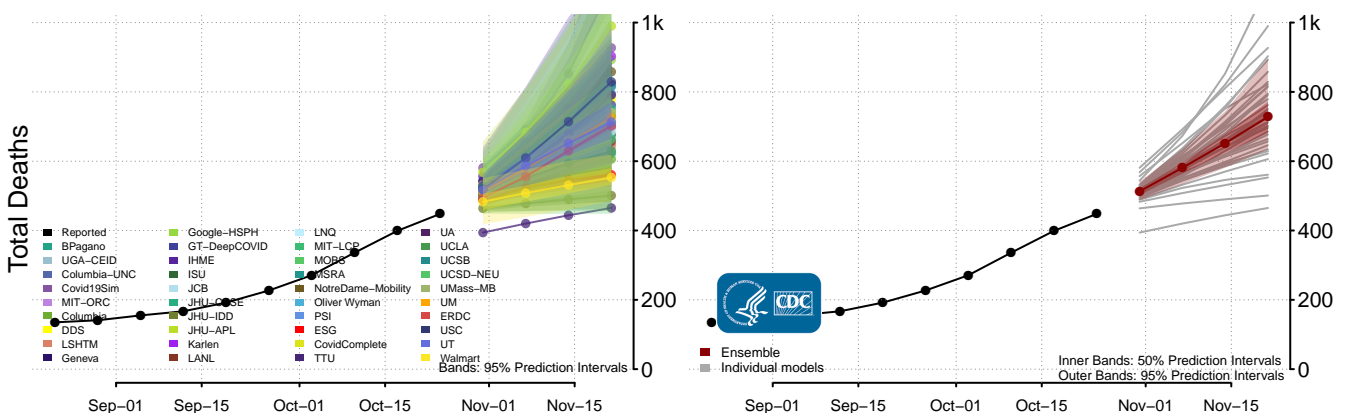
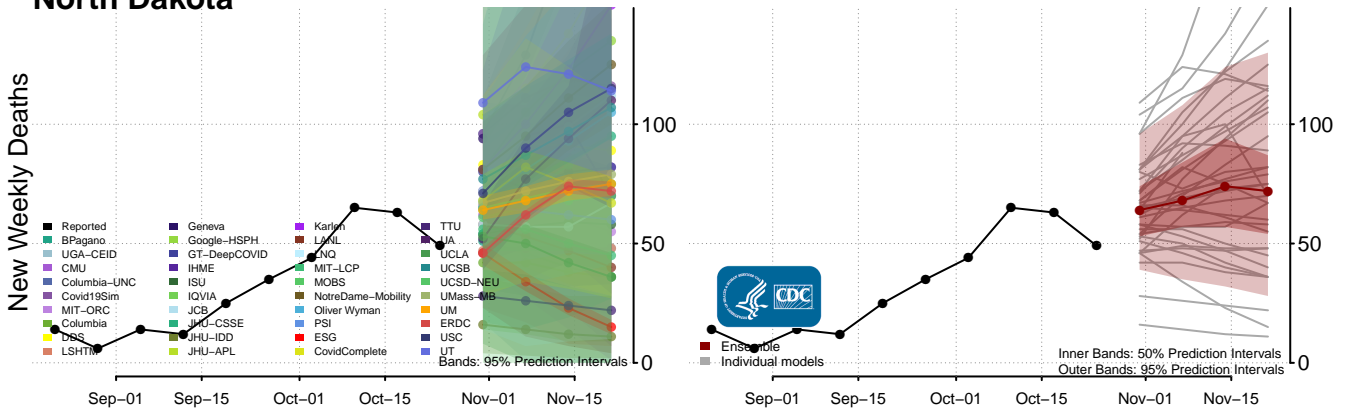
### New York



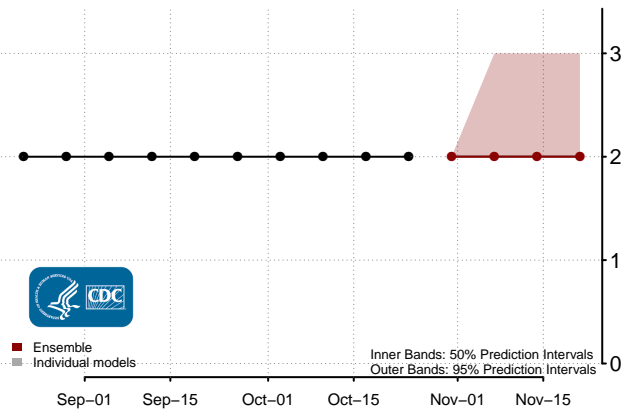
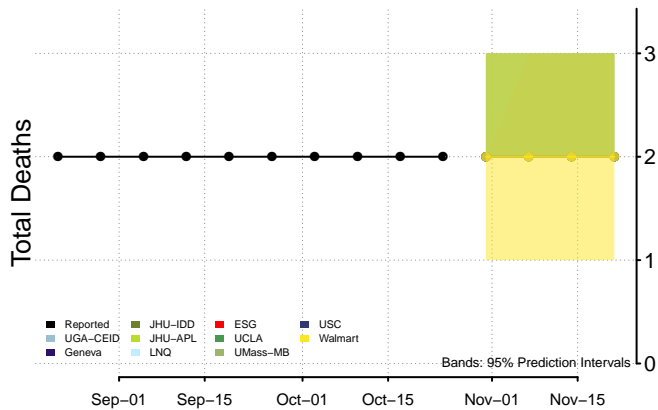
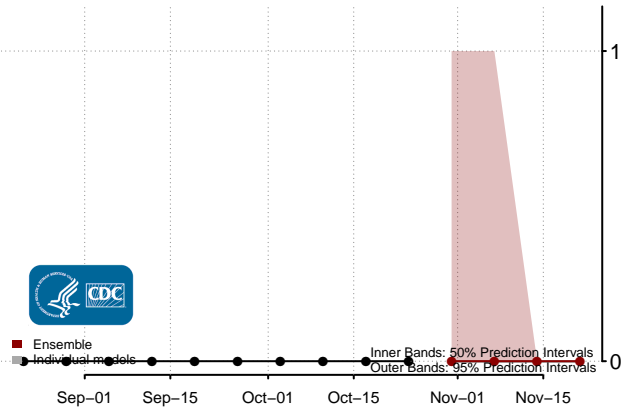
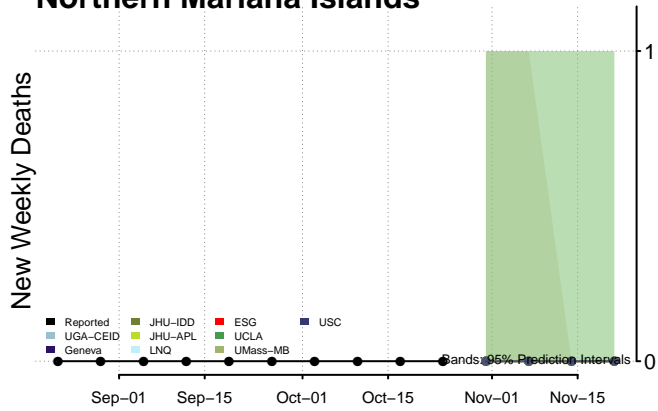
### North Carolina



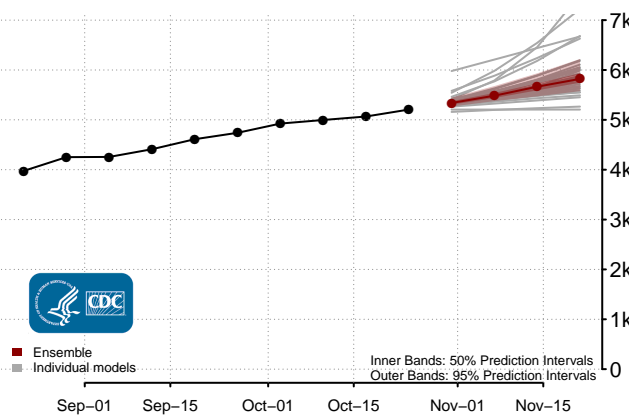
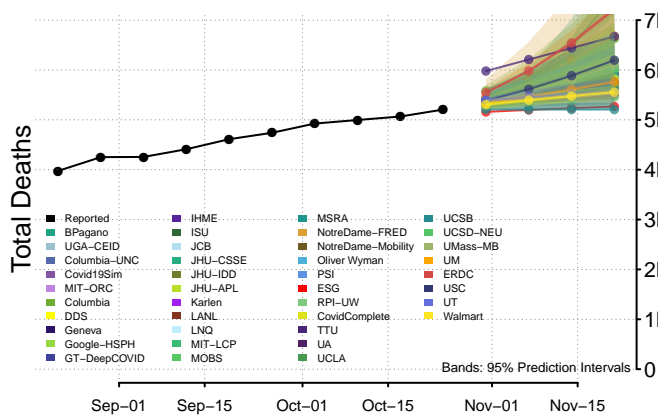
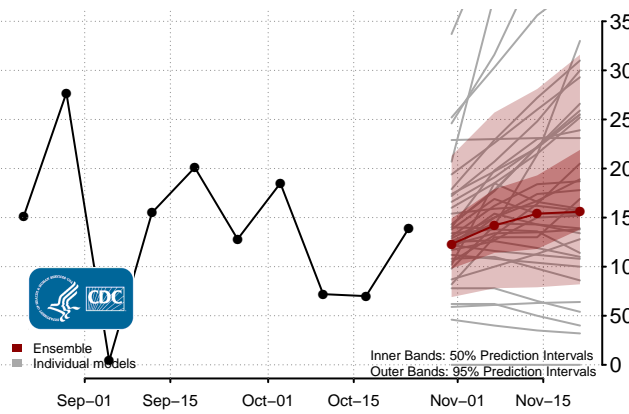
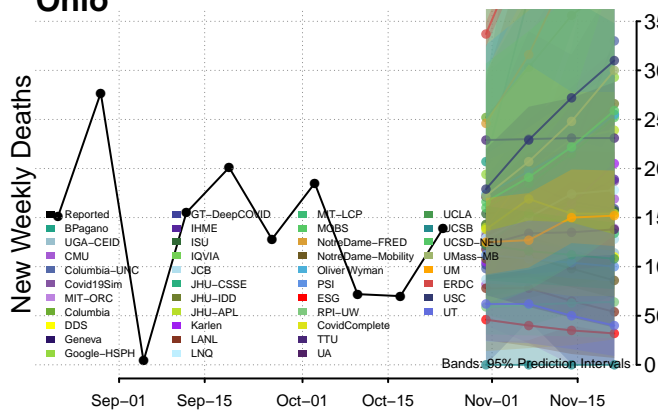
### North Dakota



### Northern Mariana Islands

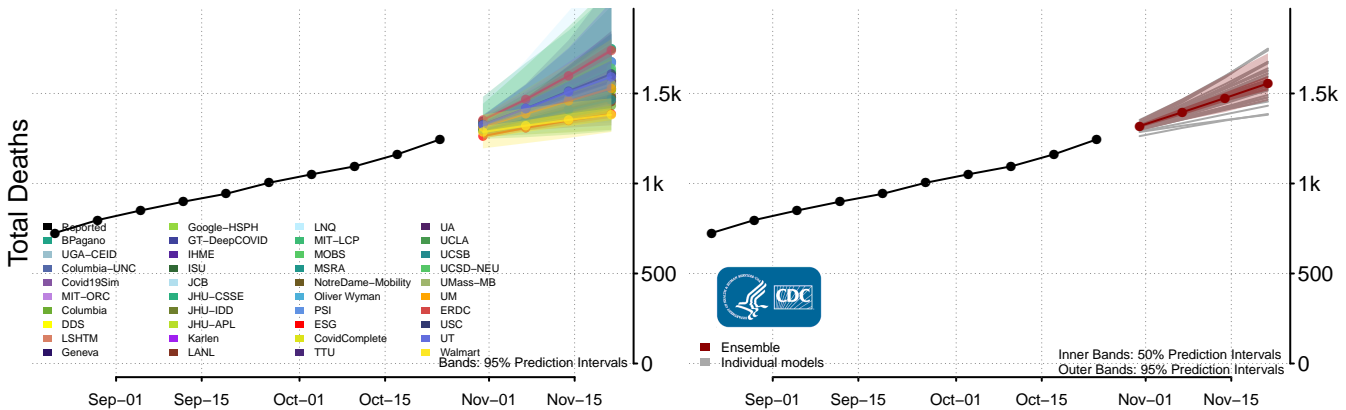
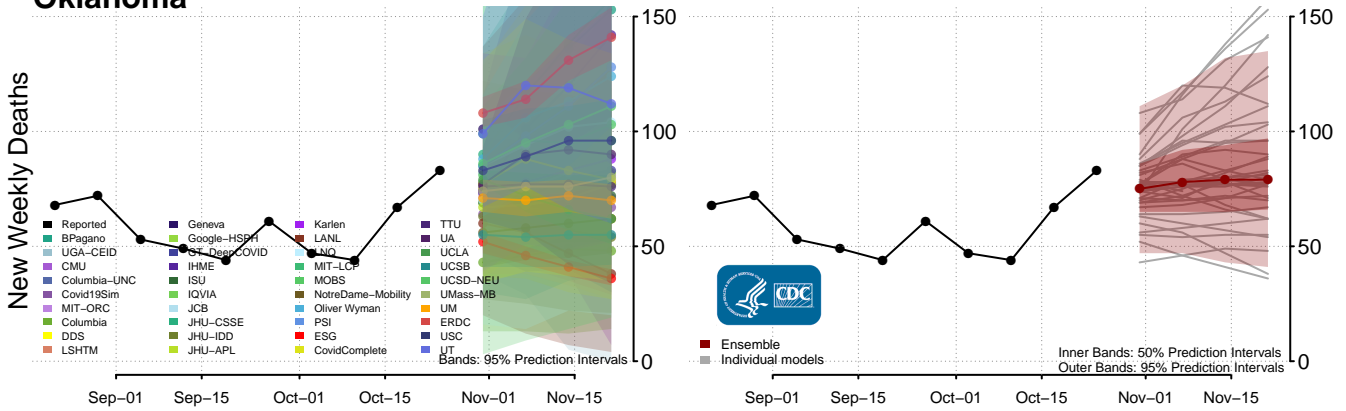


### Ohio

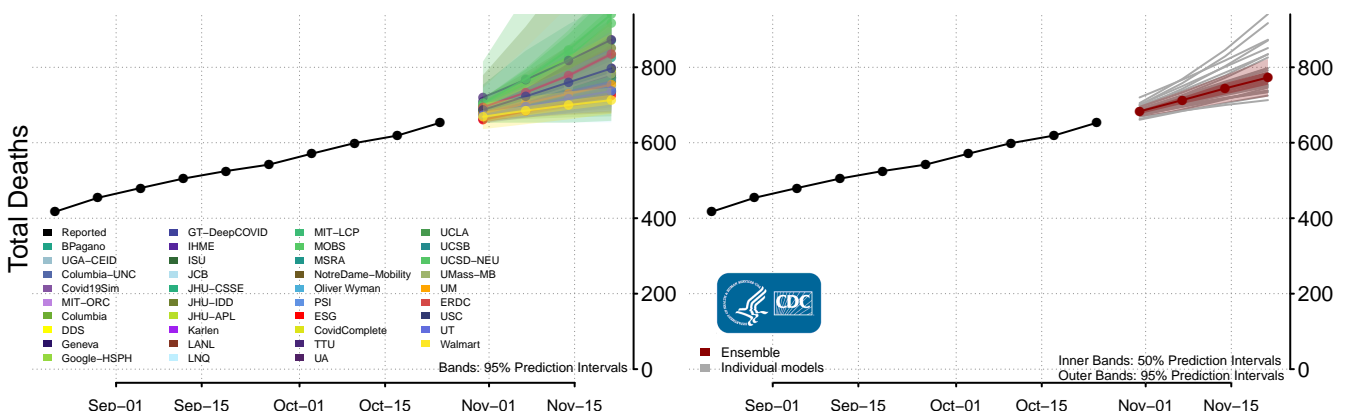
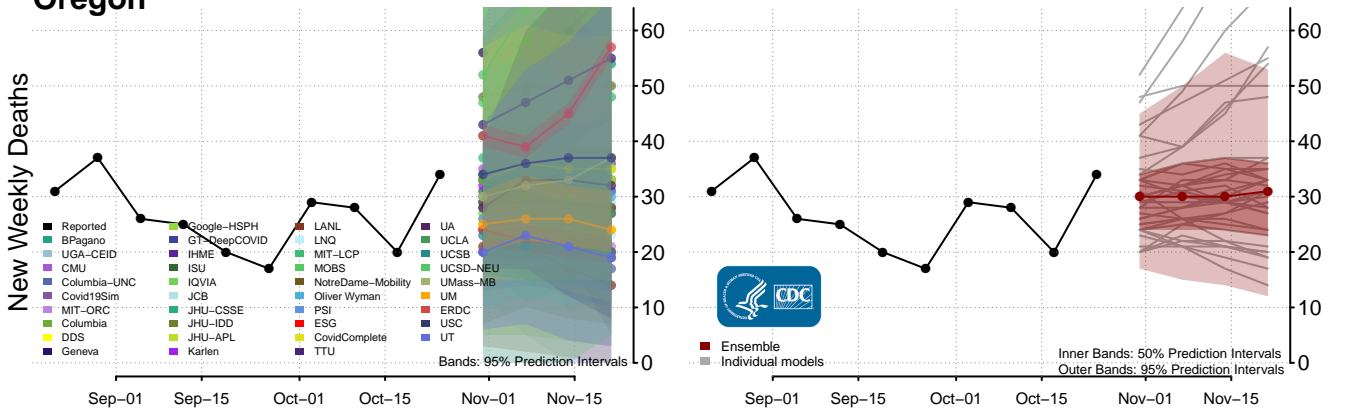




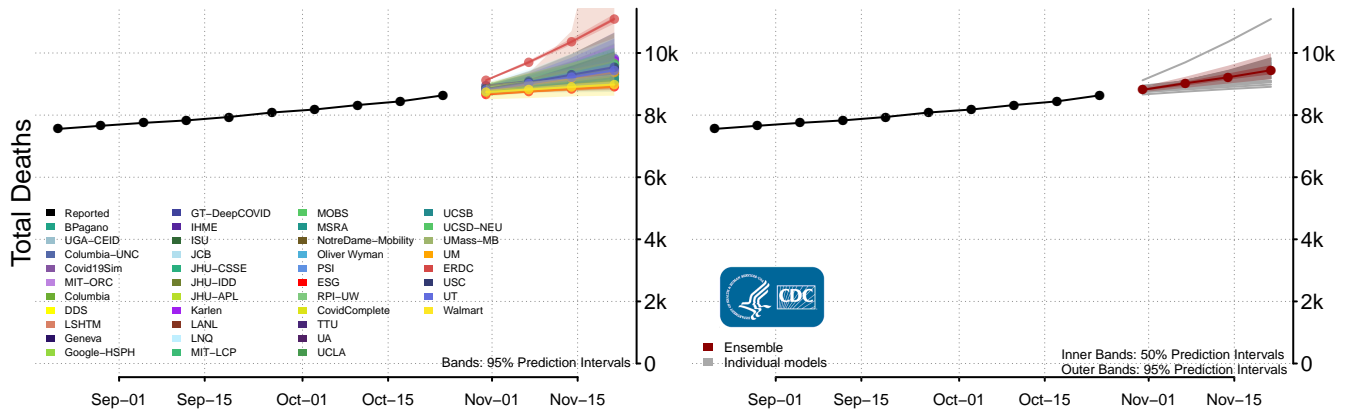
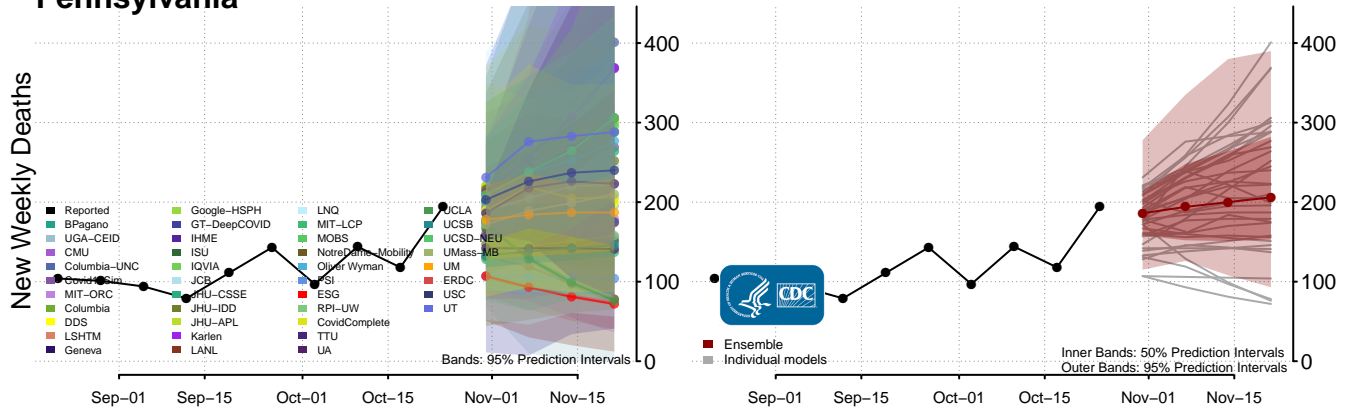
### Oklahoma



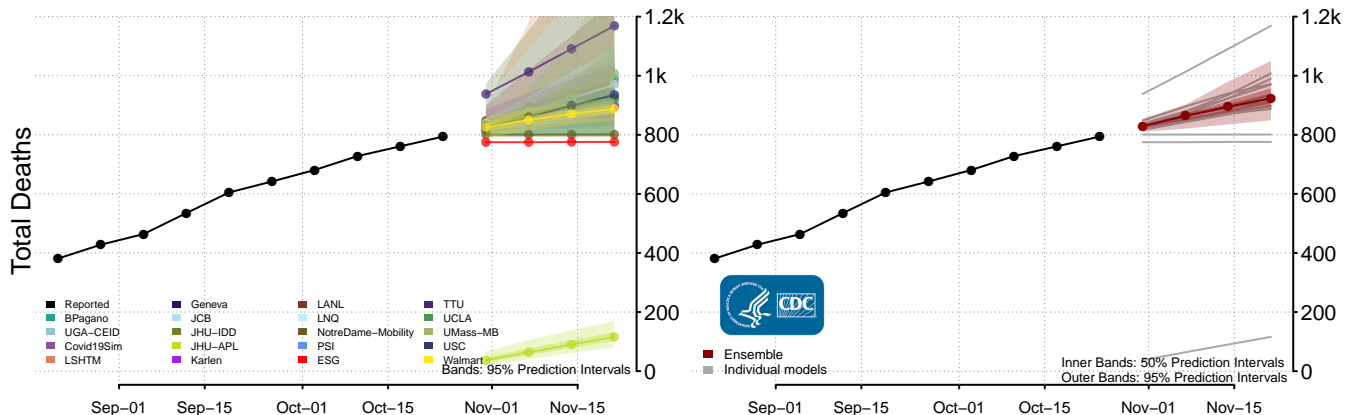
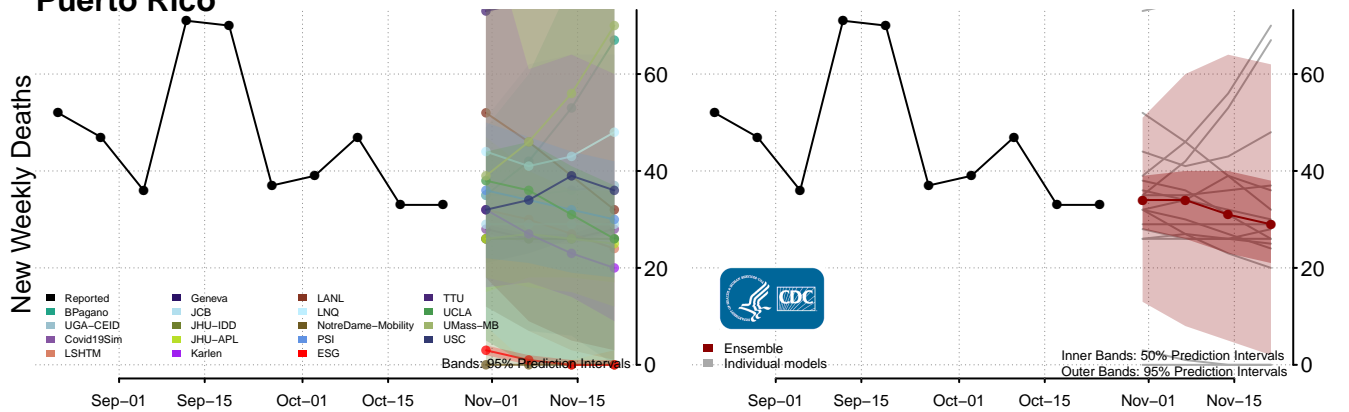
### Oregon



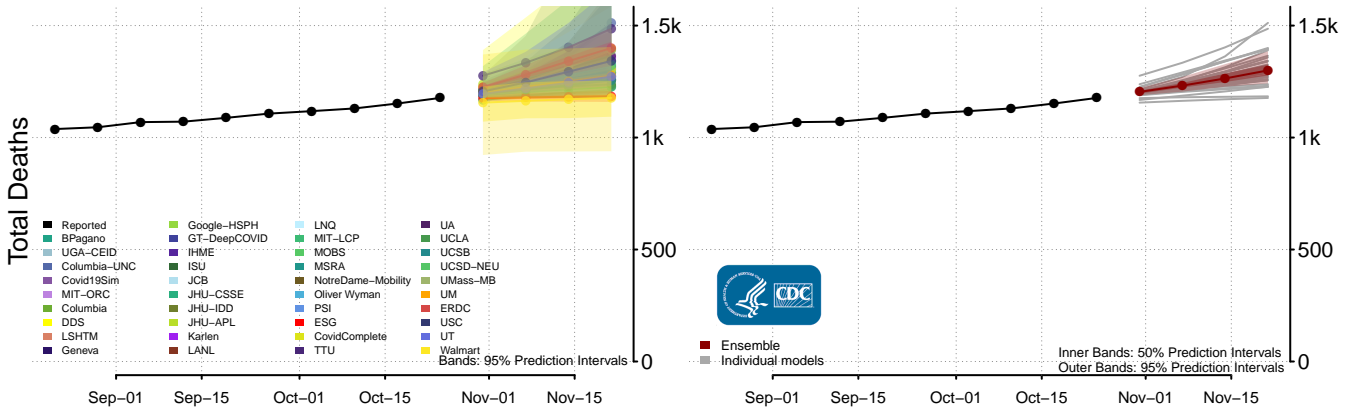
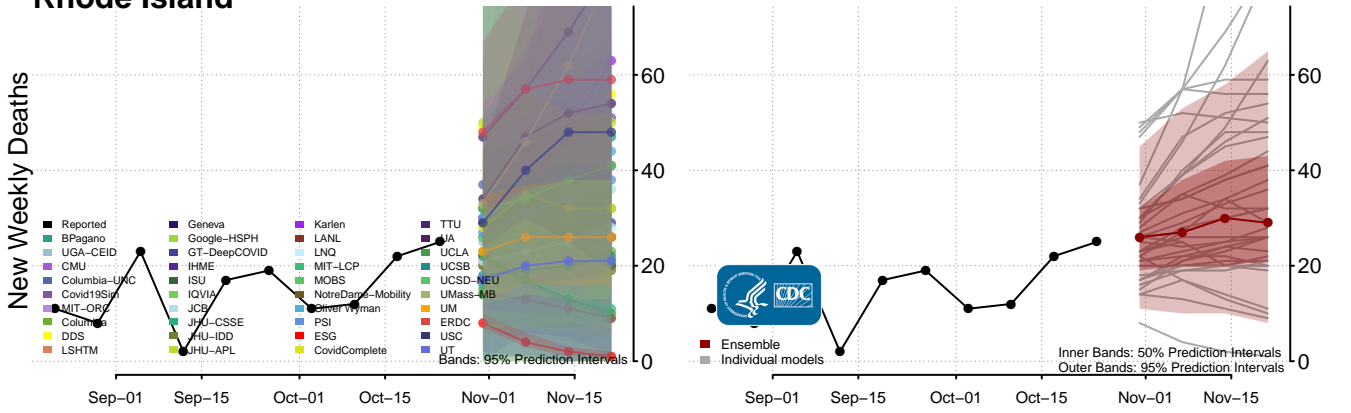
# Pennsylvania



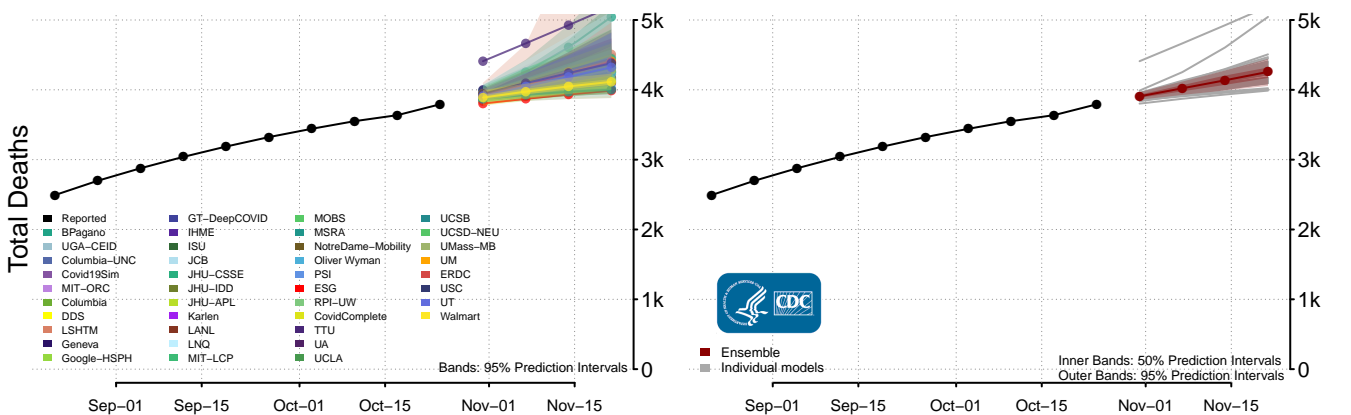
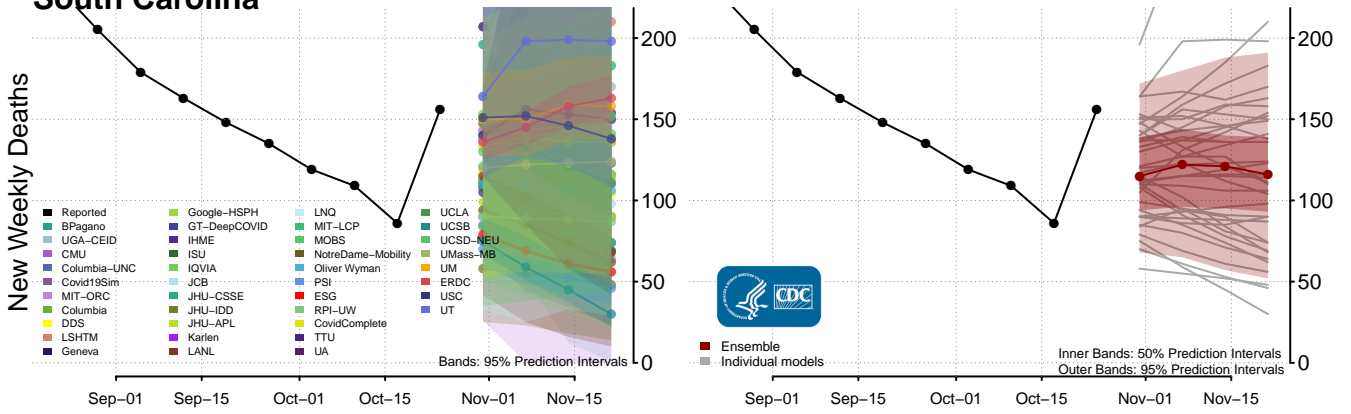
# Puerto Rico



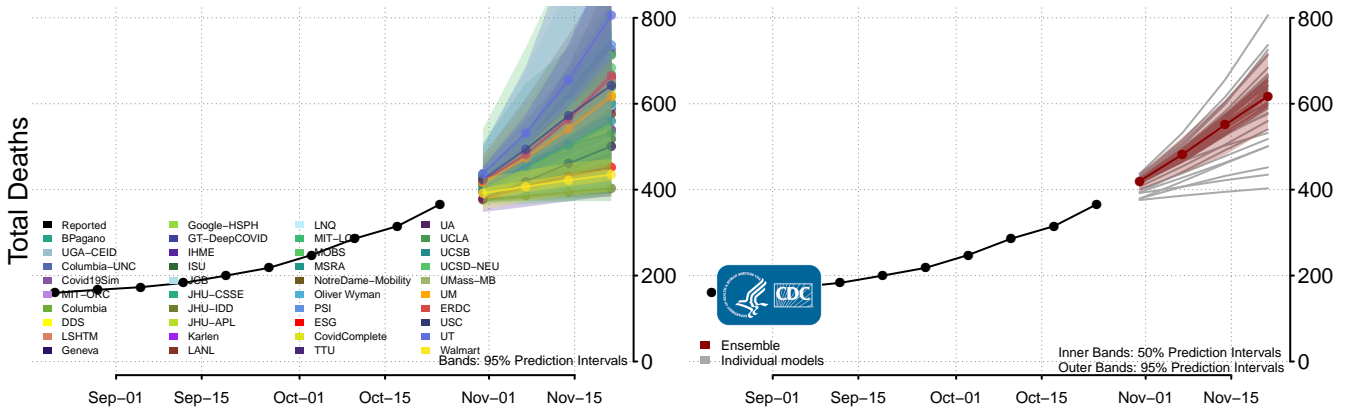
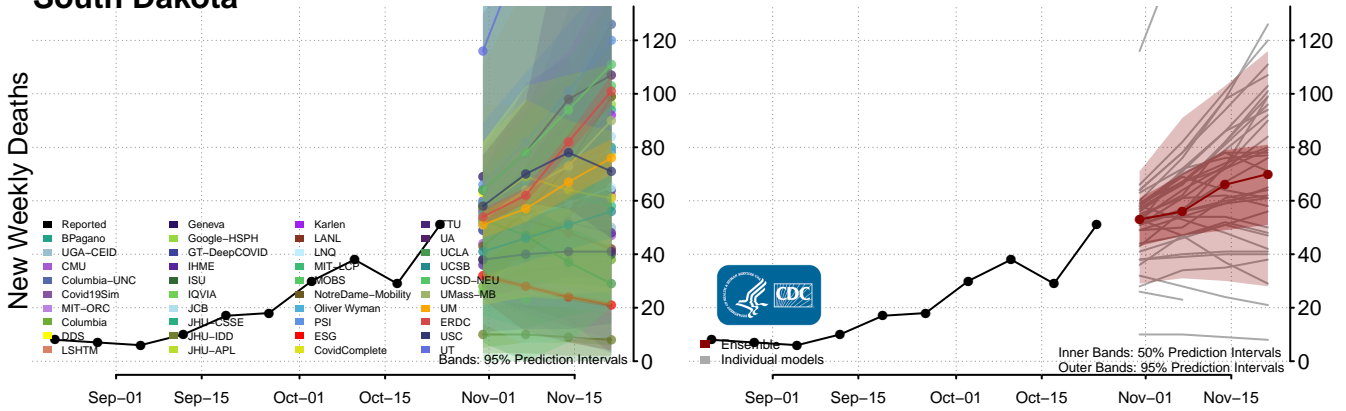
### Rhode Island



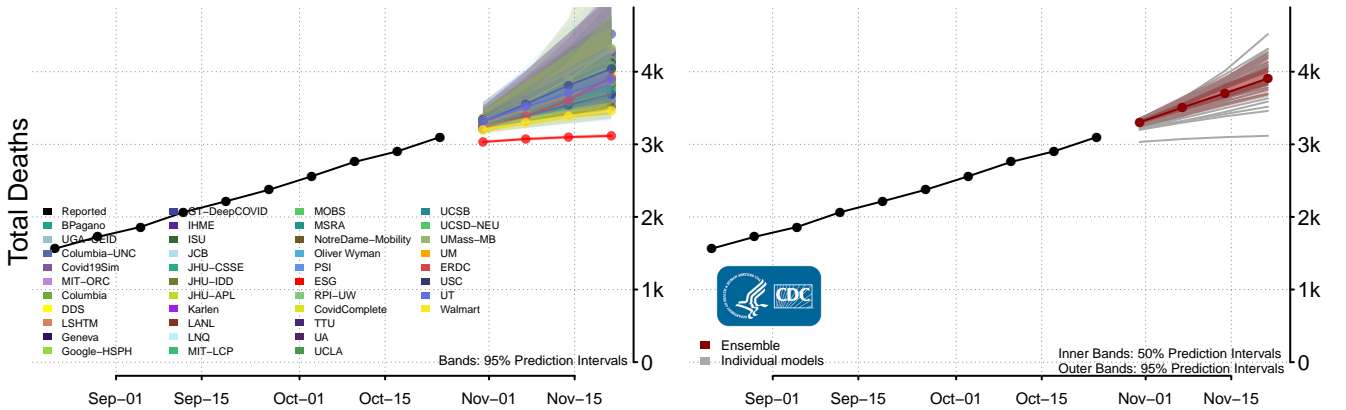
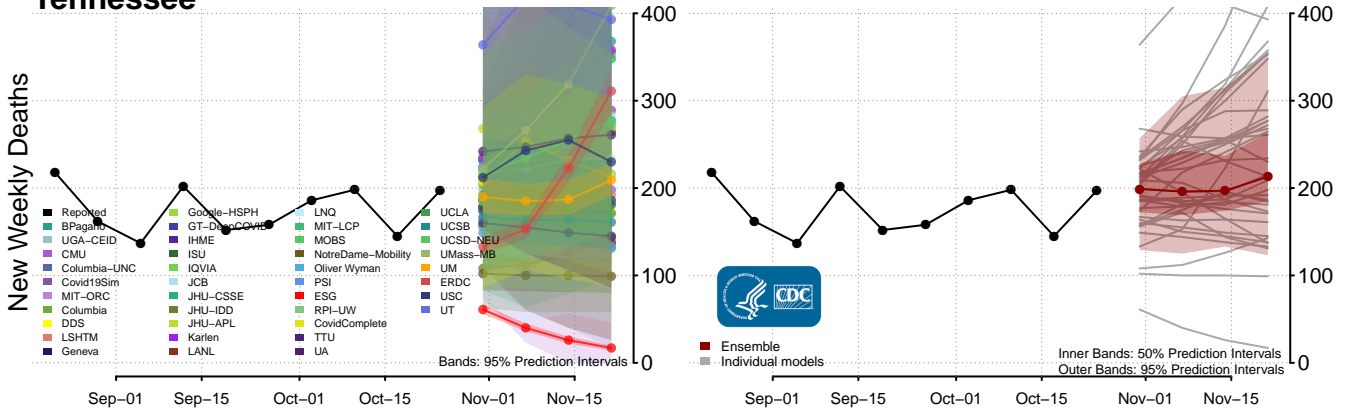
### South Carolina

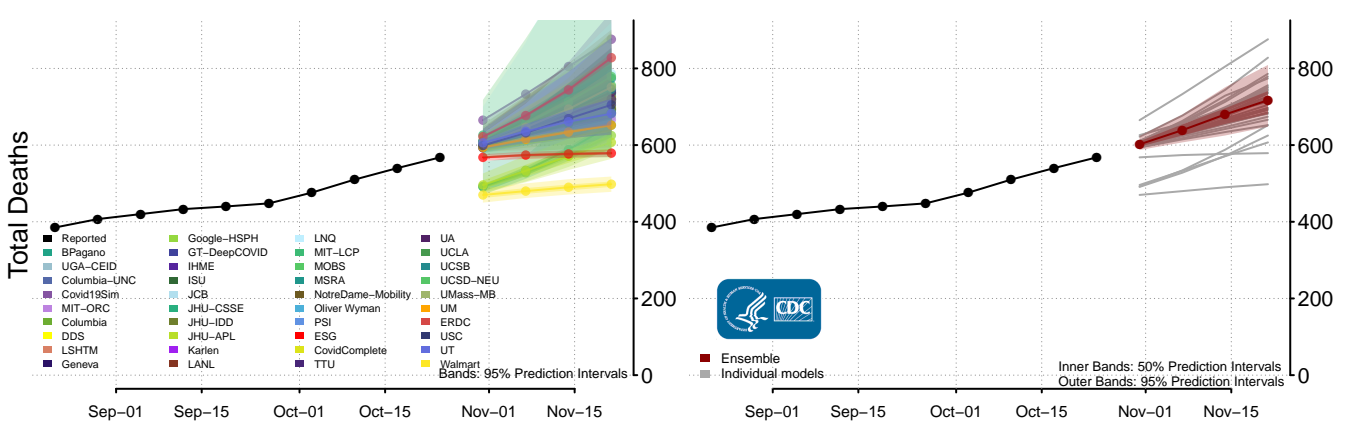
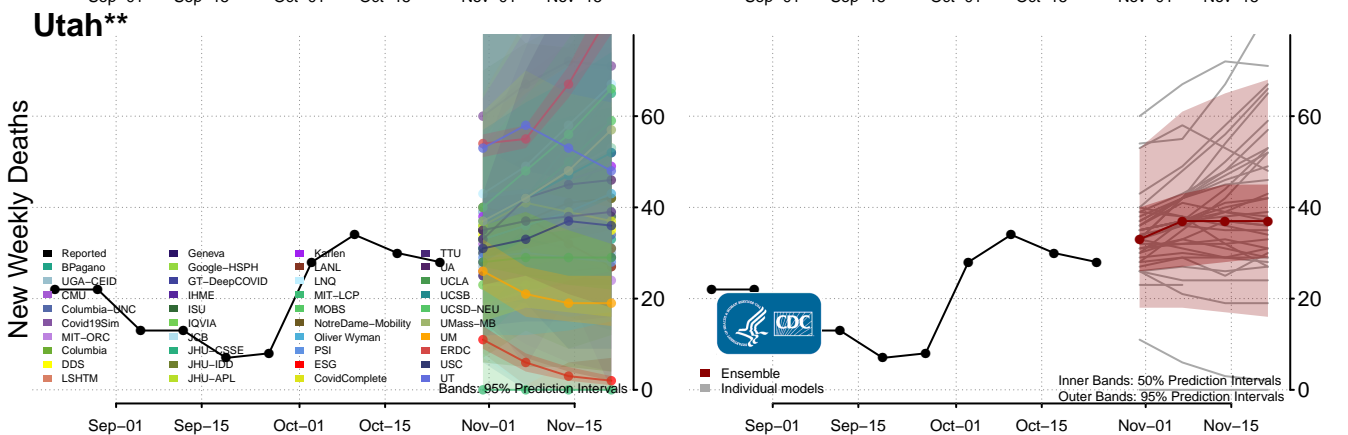
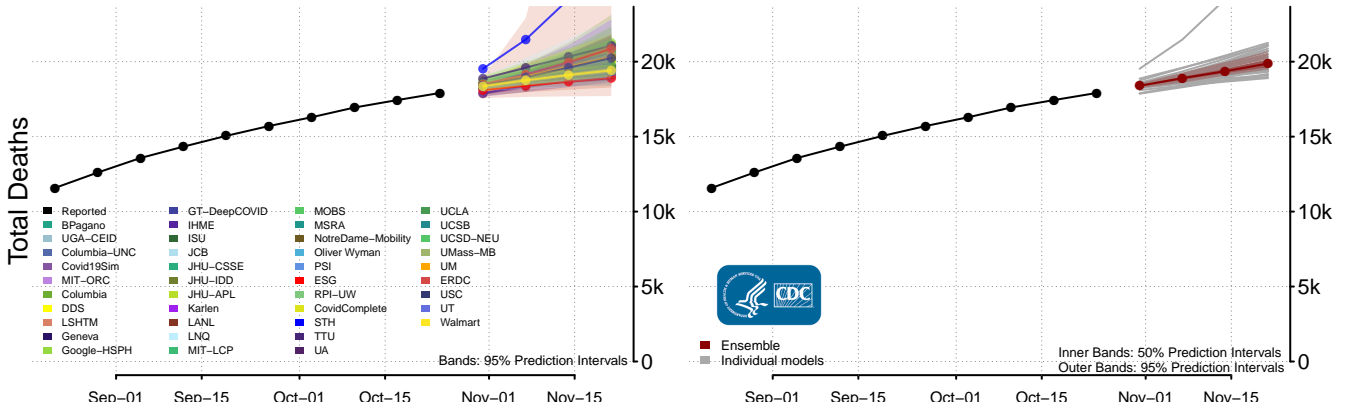
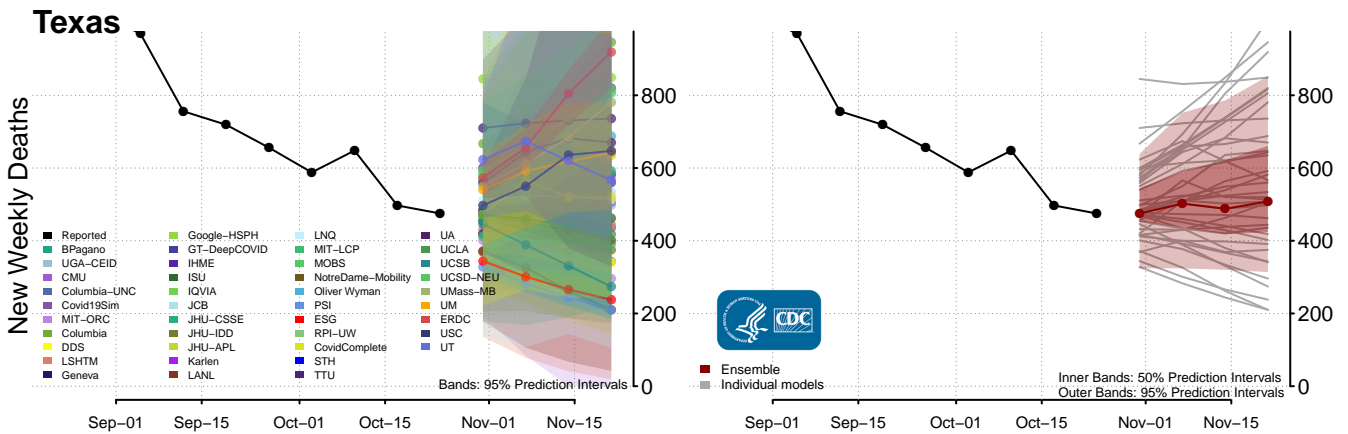


### South Dakota



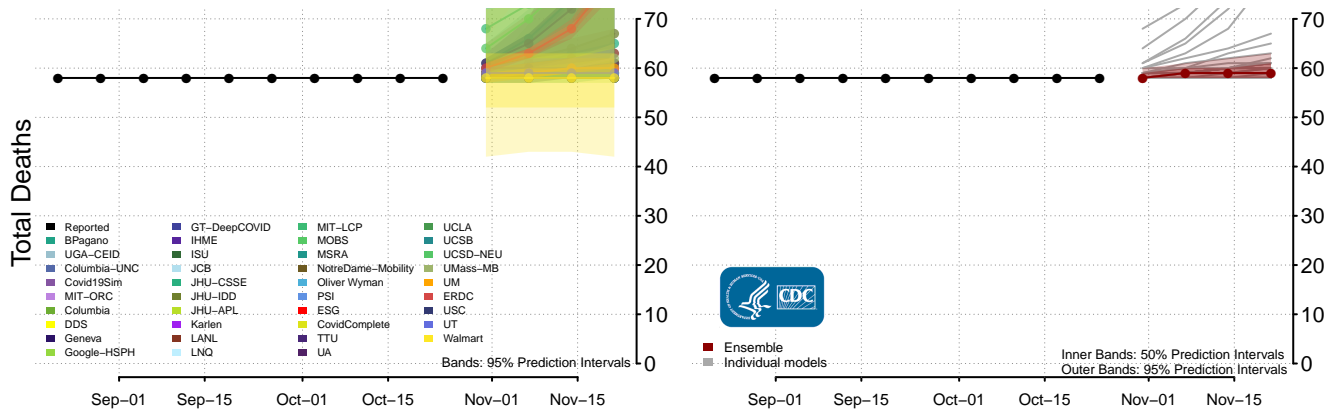
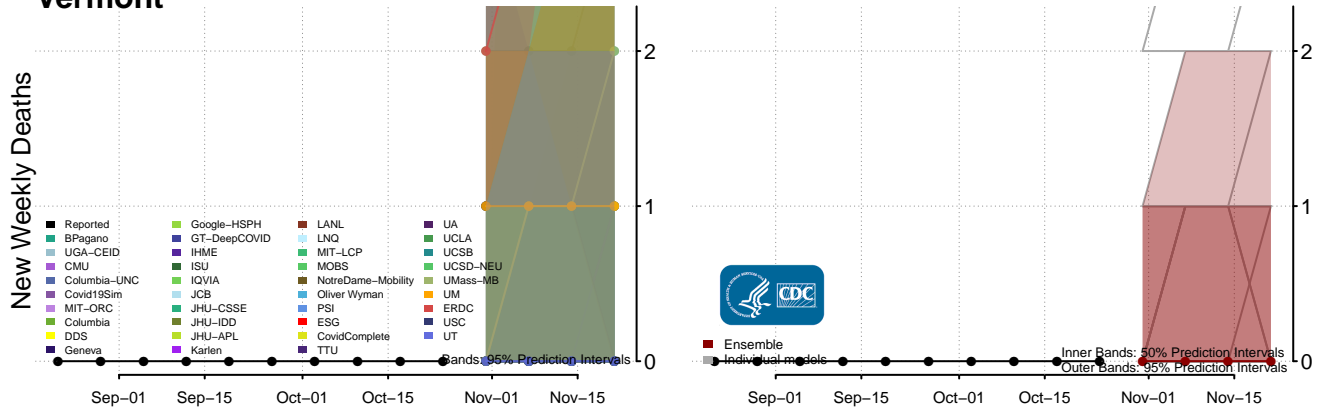
### Tennessee



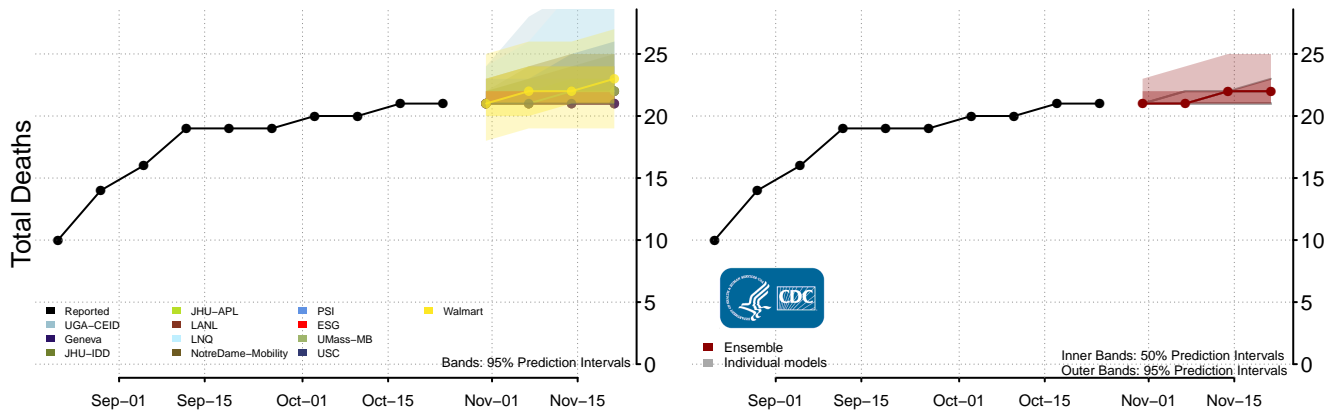
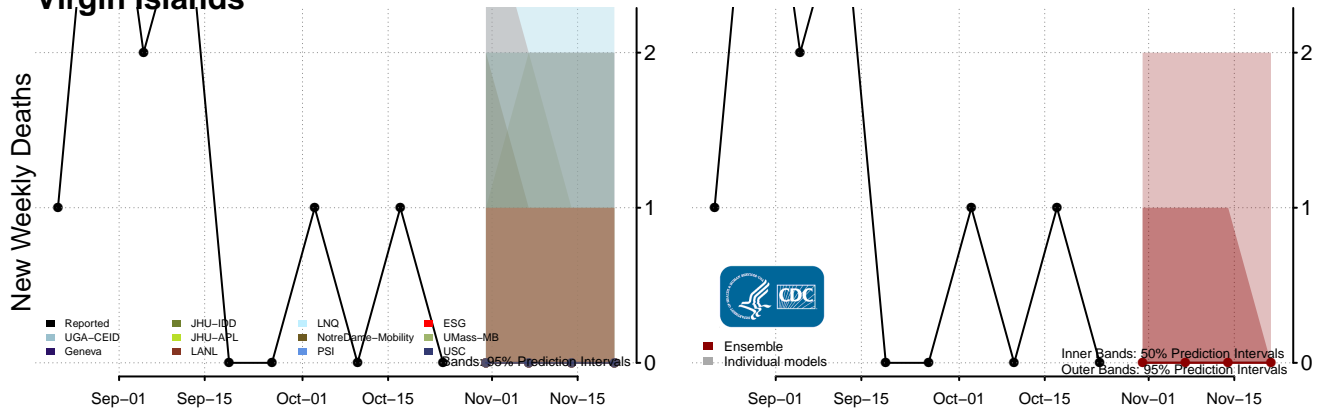


\*\*New weekly deaths may increase in this location over the next four weeks. For these locations, the ensemble forecast indicates a probability of 0.75 or greater that more deaths will be reported in week four of the forecast than in the last reported week.

### Vermont

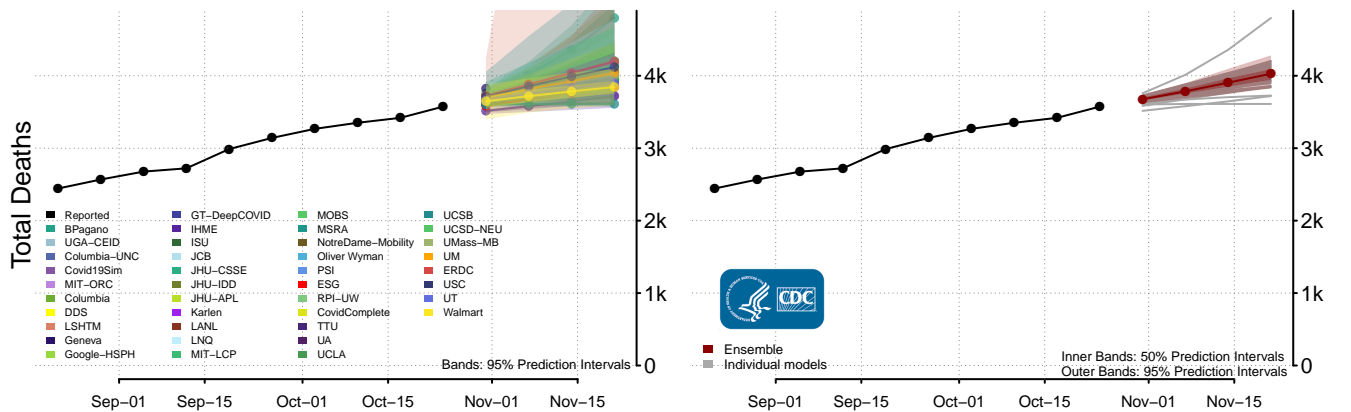
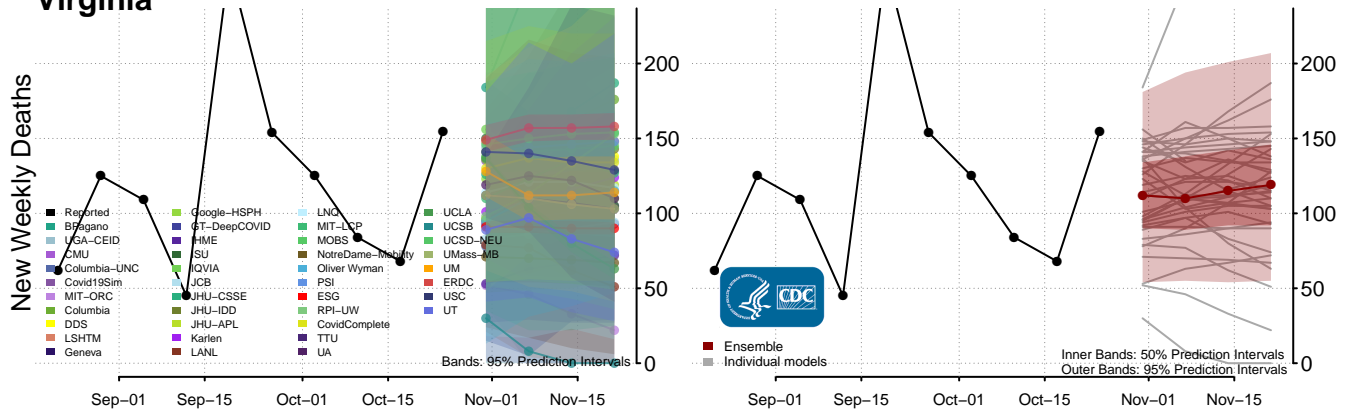


### Virgin Islands

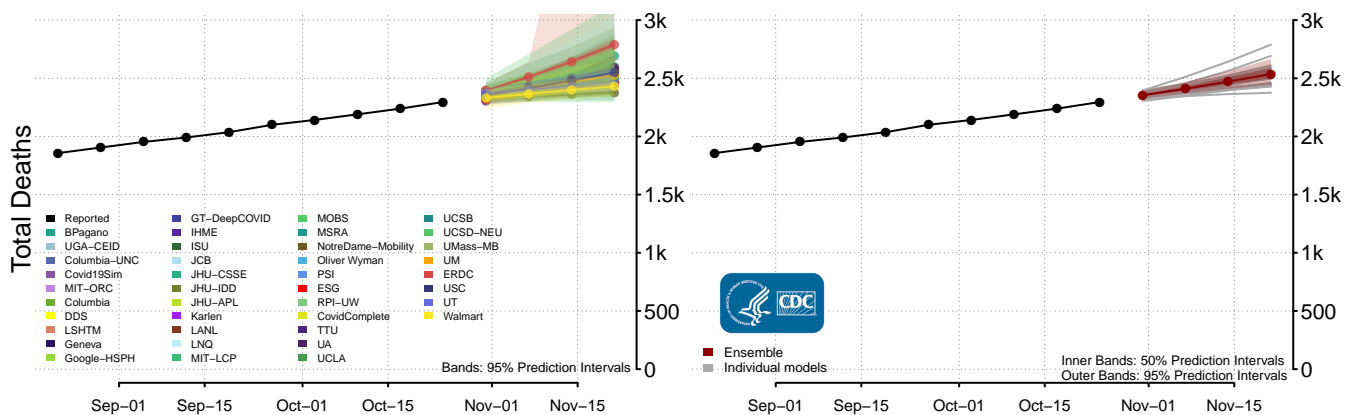
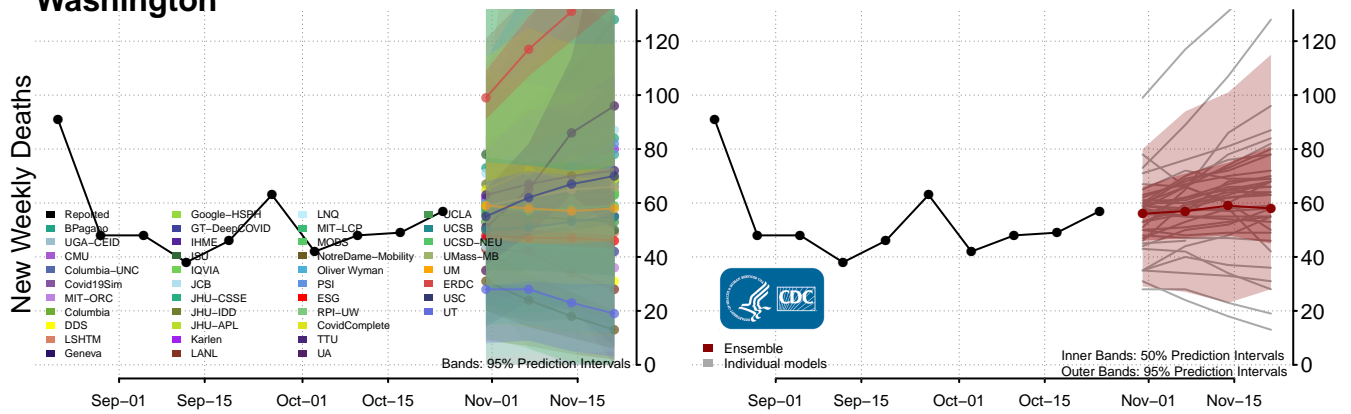




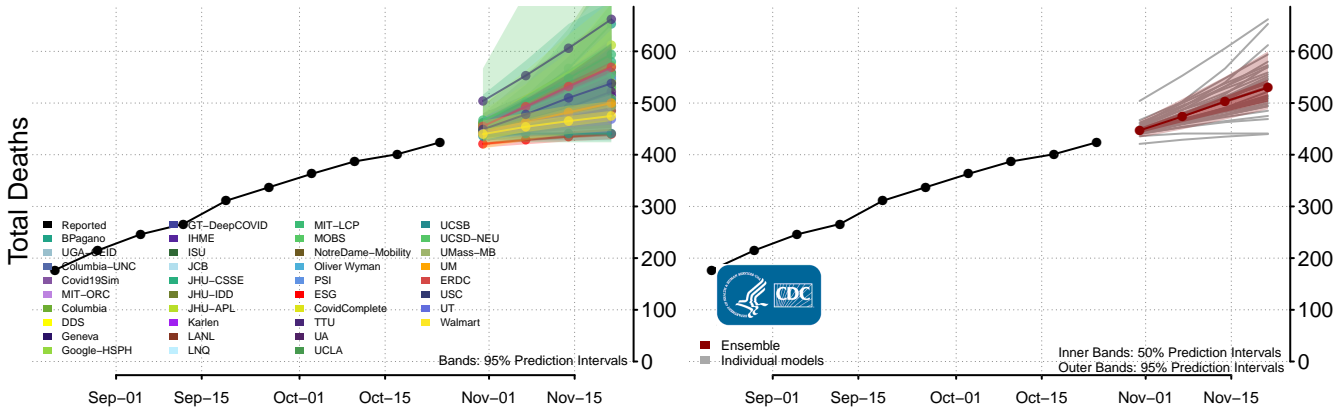
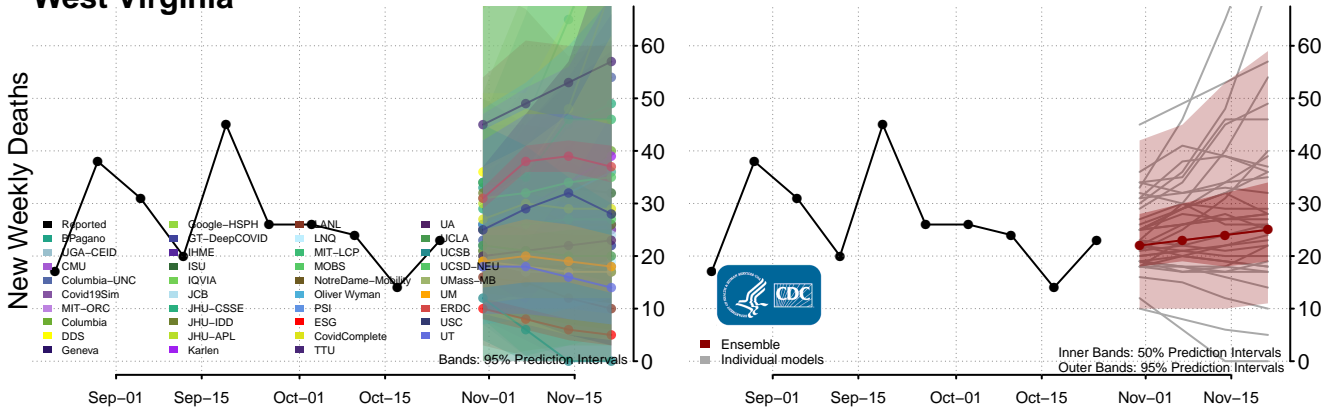
### Virginia



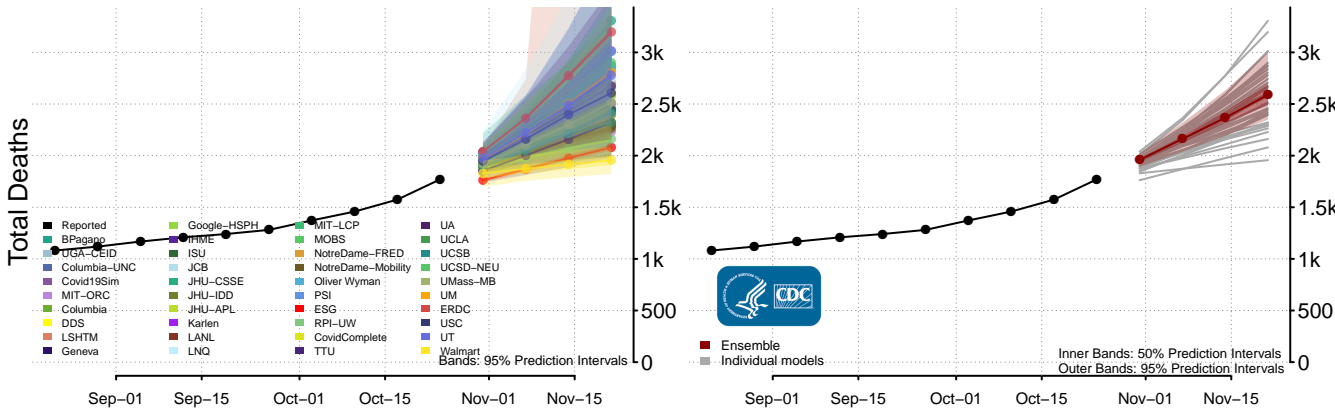
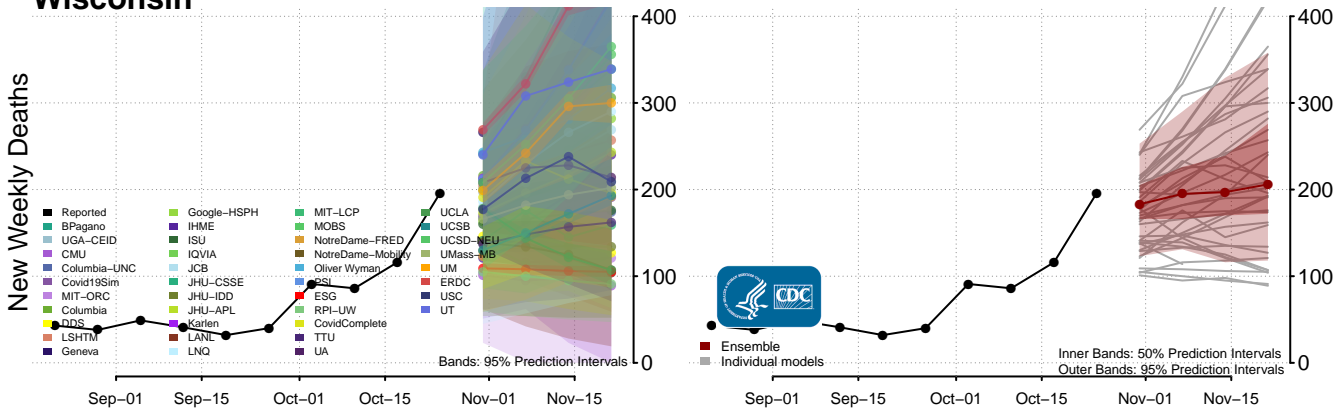
### Washington



### West Virginia



### Wisconsin



# Wyoming

