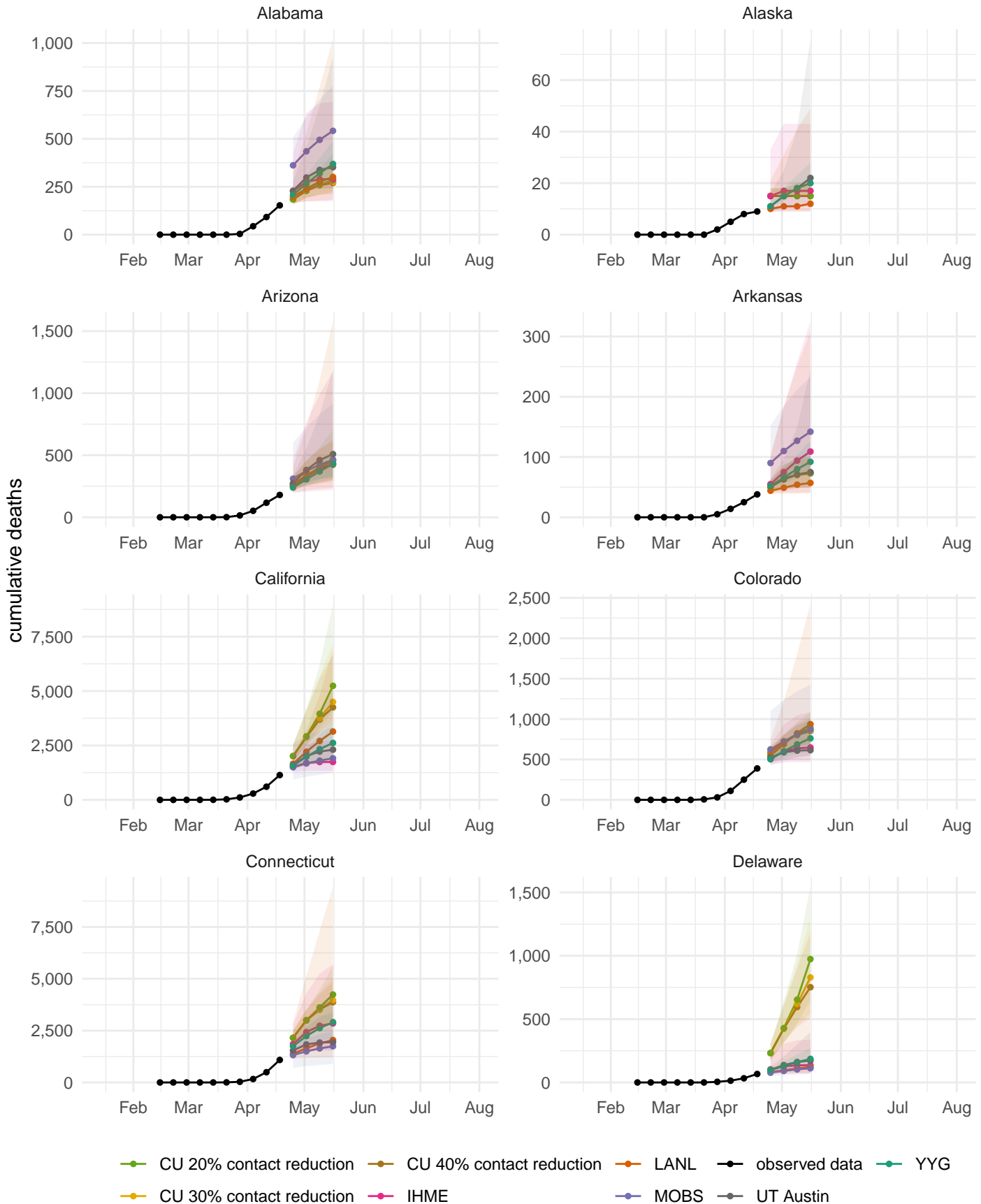
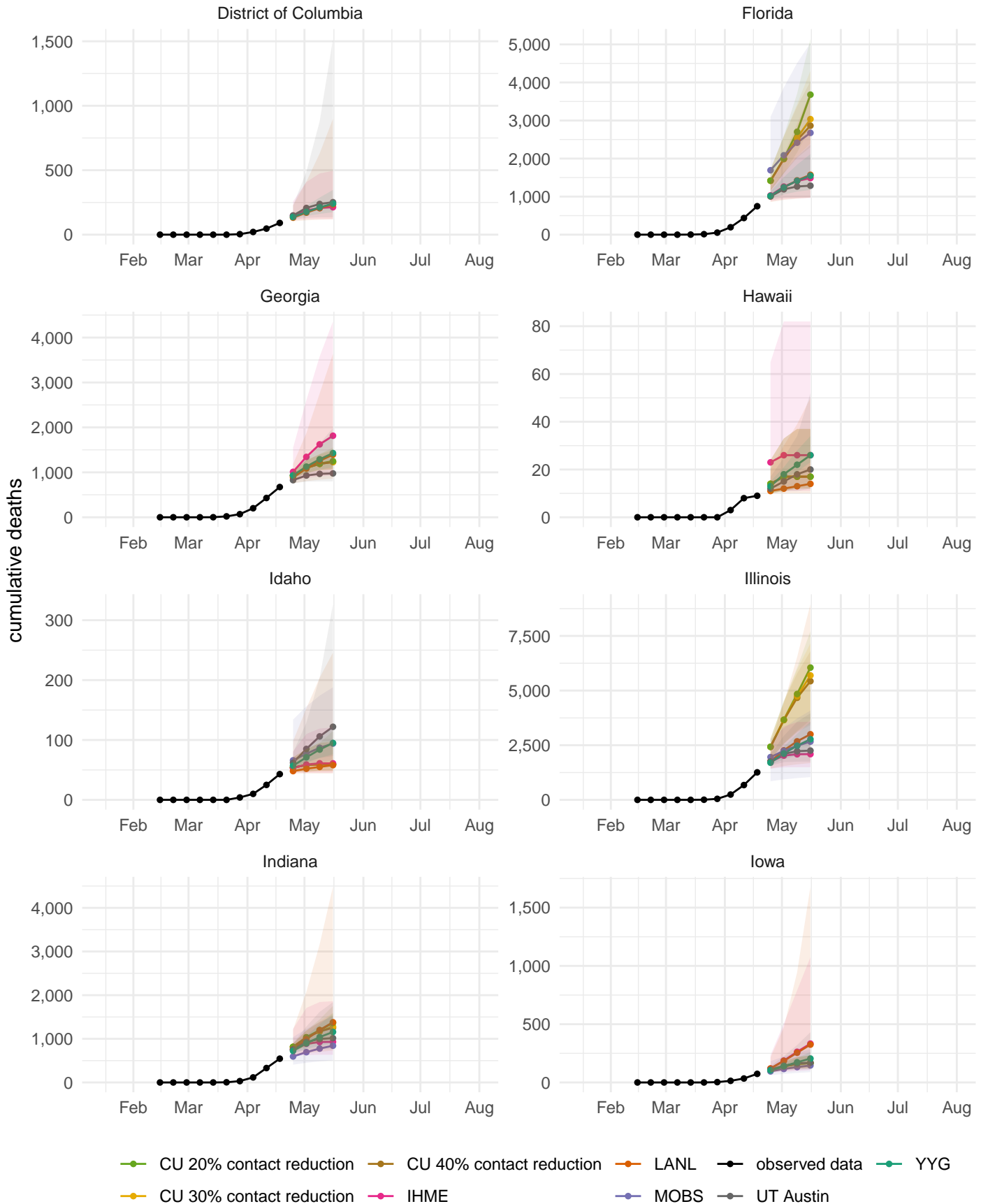


# Observed and forecasted cumulative COVID-19 deaths in the US



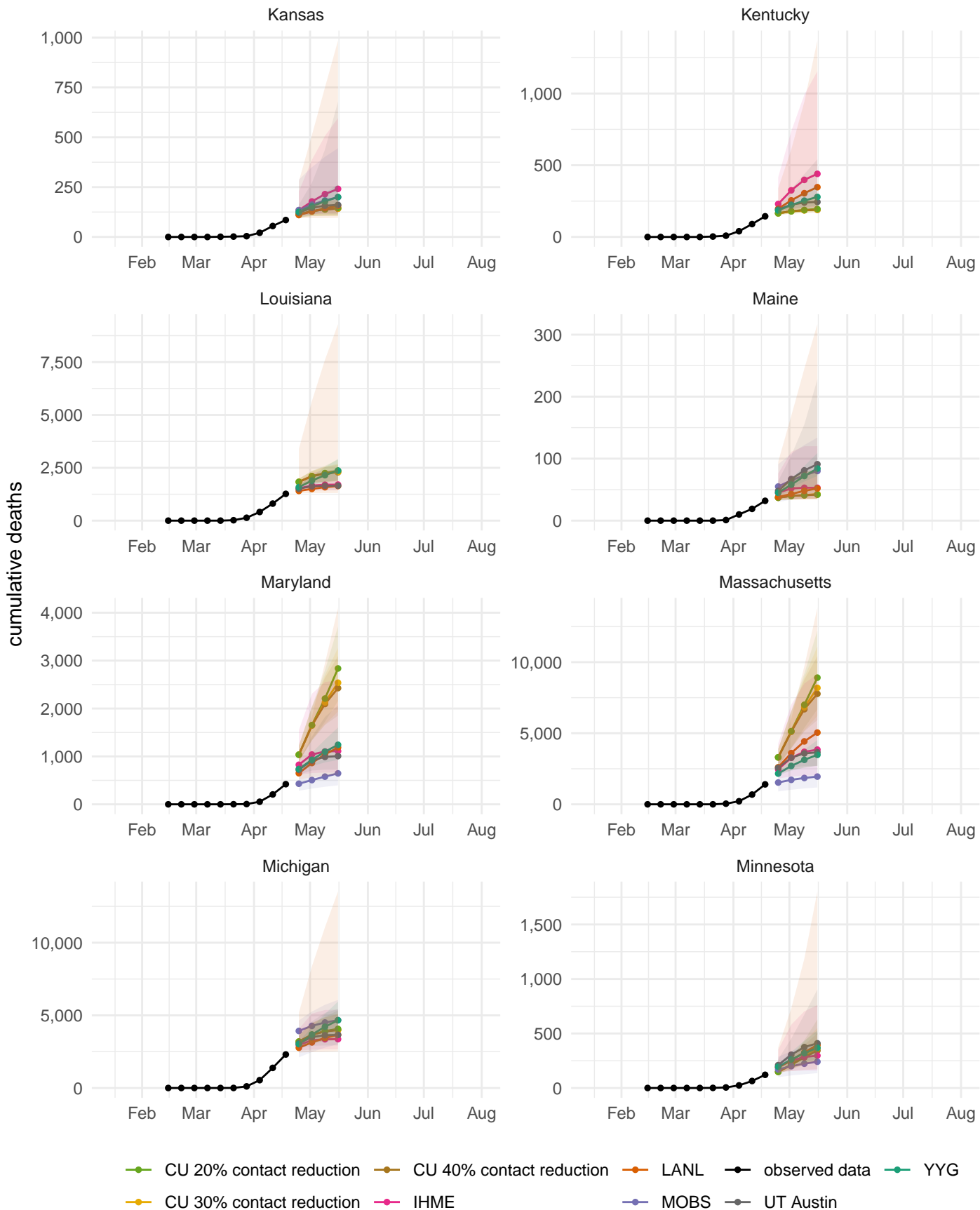
The CU models make various assumptions about the effectiveness of current interventions. The LANL model is not conditional on any particular set of interventions. All other models are conditional on existing social distancing measures continuing through the projected time-period shown. Intervals shown are at the 95% uncertainty level.

# Observed and forecasted cumulative COVID-19 deaths in the US



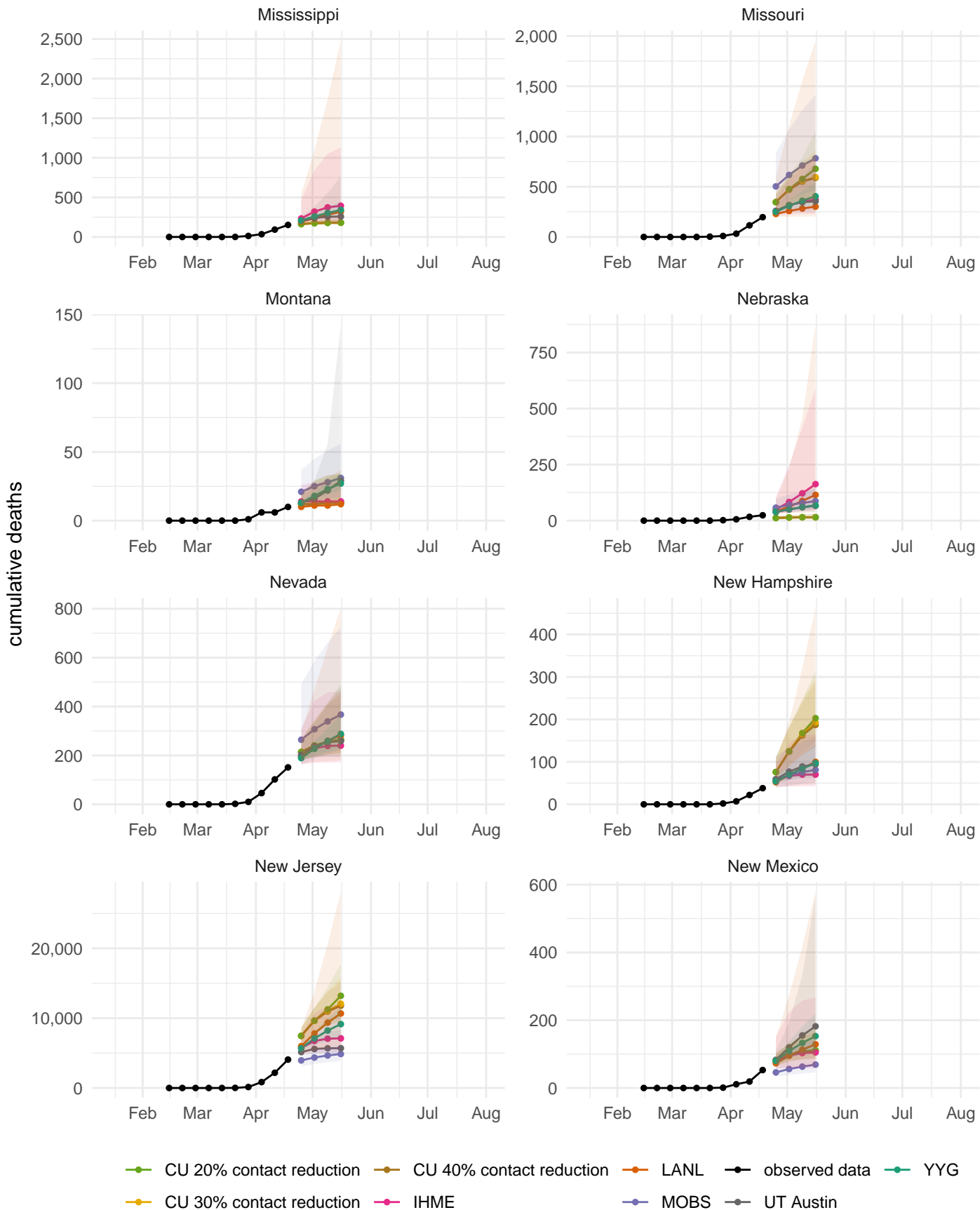
The CU models make various assumptions about the effectiveness of current interventions. The LANL model is not conditional on any particular set of interventions. All other models are conditional on existing social distancing measures continuing through the projected time-period shown. Intervals shown are at the 95% uncertainty level.

# Observed and forecasted cumulative COVID-19 deaths in the US



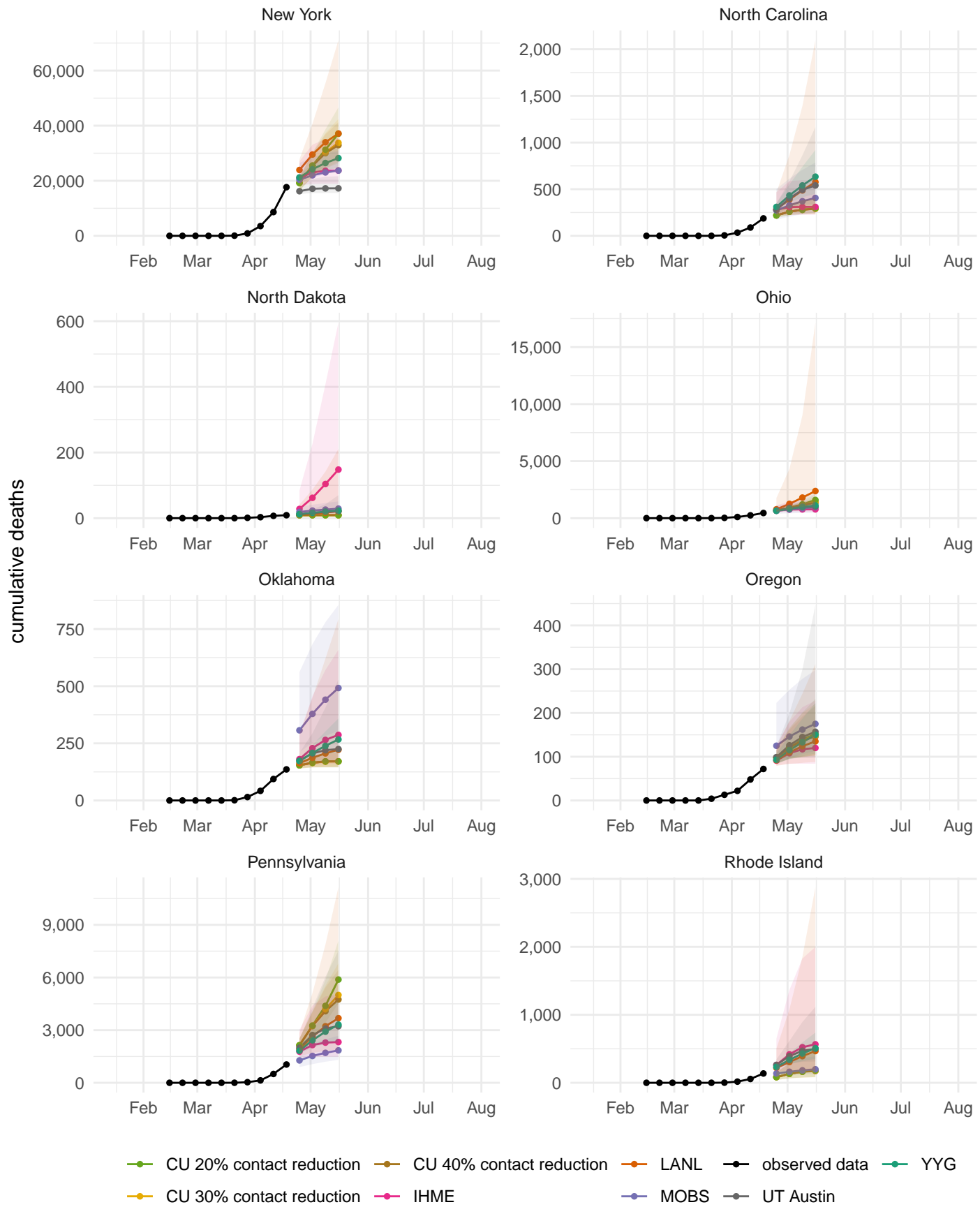
The CU models make various assumptions about the effectiveness of current interventions. The LANL model is not conditional on any particular set of interventions. All other models are conditional on existing social distancing measures continuing through the projected time-period shown. Intervals shown are at the 95% uncertainty level.

# Observed and forecasted cumulative COVID-19 deaths in the US



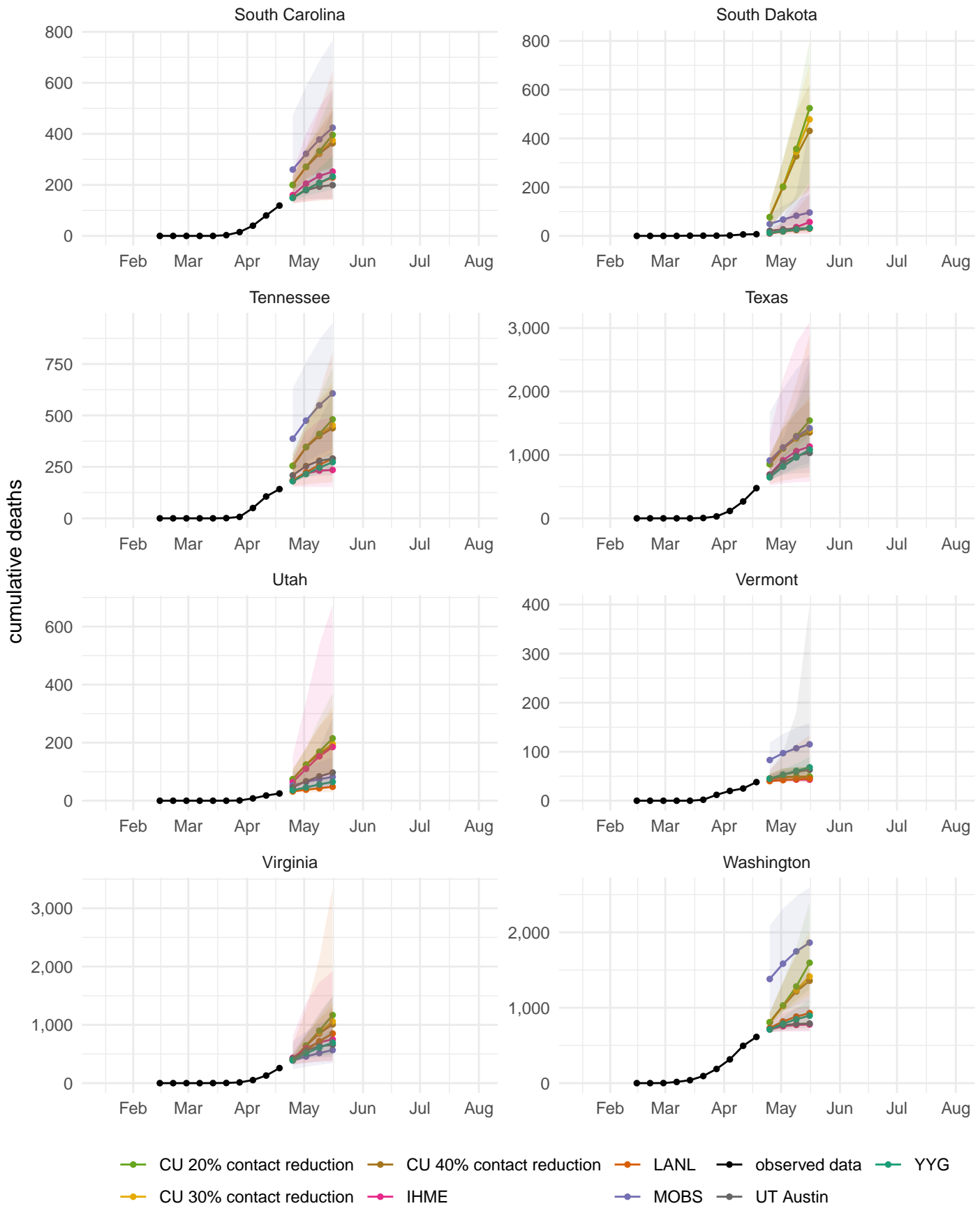
The CU models make various assumptions about the effectiveness of current interventions. The LANL model is not conditional on any particular set of interventions. All other models are conditional on existing social distancing measures continuing through the projected time-period shown. Intervals shown are at the 95% uncertainty level.

# Observed and forecasted cumulative COVID-19 deaths in the US



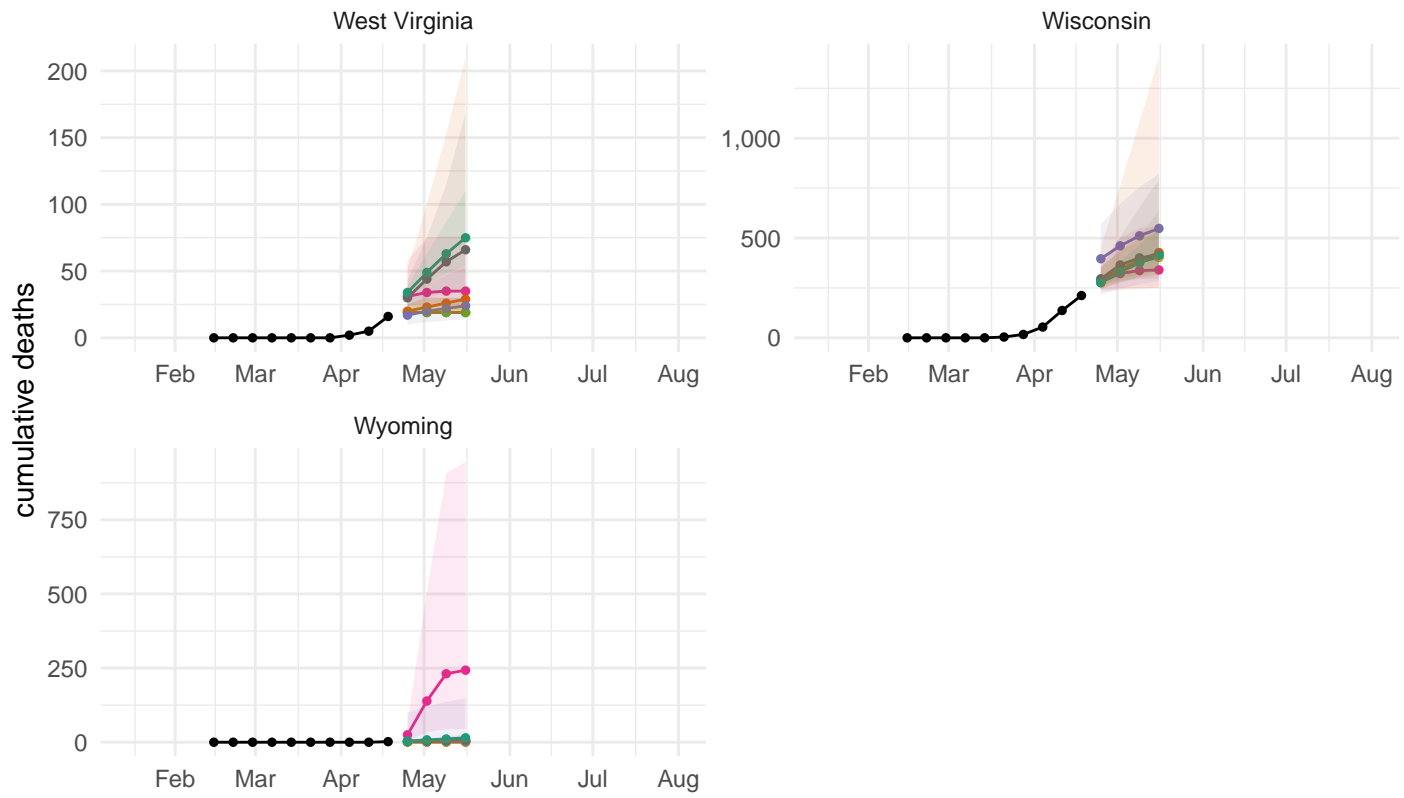
The CU models make various assumptions about the effectiveness of current interventions. The LANL model is not conditional on any particular set of interventions. All other models are conditional on existing social distancing measures continuing through the projected time-period shown. Intervals shown are at the 95% uncertainty level.

# Observed and forecasted cumulative COVID-19 deaths in the US



The CU models make various assumptions about the effectiveness of current interventions. The LANL model is not conditional on any particular set of interventions. All other models are conditional on existing social distancing measures continuing through the projected time-period shown. Intervals shown are at the 95% uncertainty level.

# Observed and forecasted cumulative COVID-19 deaths in the US



- CU 20% contact reduction
- CU 40% contact reduction
- LANL
- observed data
- YYG
- CU 30% contact reduction
- IHME
- MOBS
- UT Austin

The CU models make various assumptions about the effectiveness of current interventions. The LANL model is not conditional on any particular set of interventions. All other models are conditional on existing social distancing measures continuing through the projected time-period shown. Intervals shown are at the 95% uncertainty level.