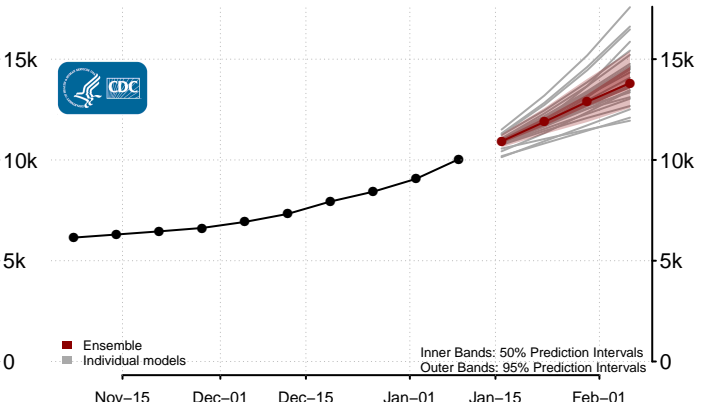
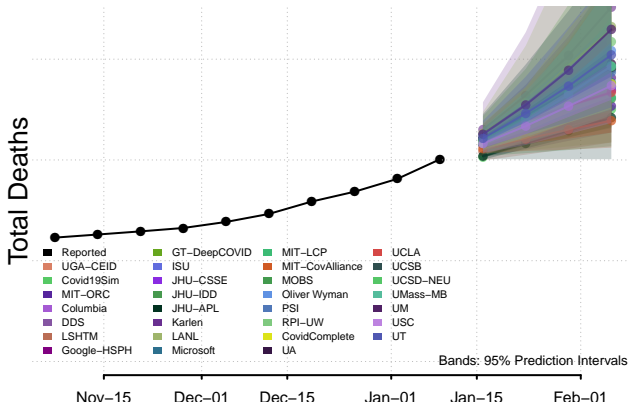
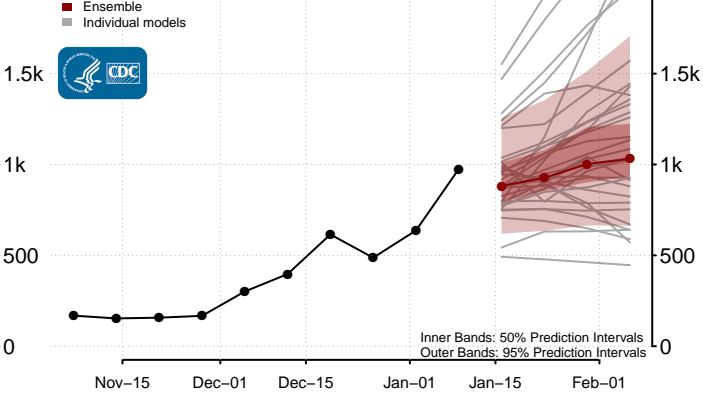
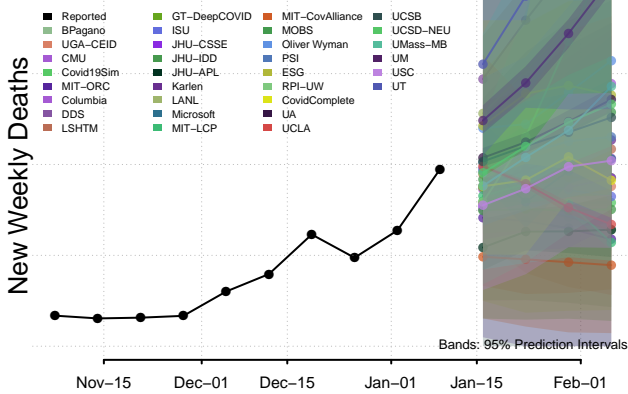
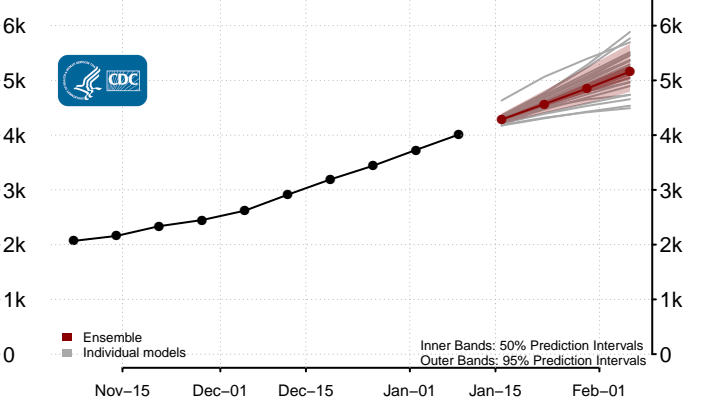
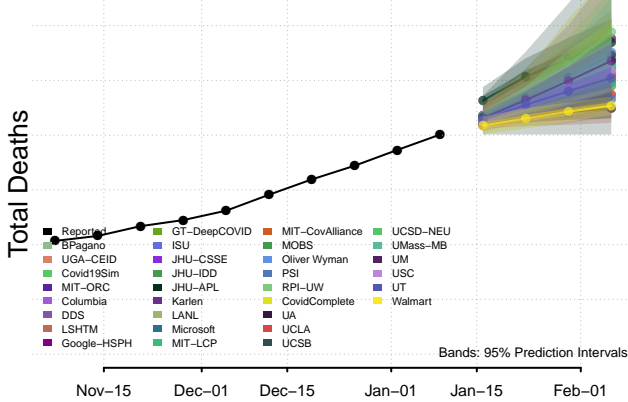
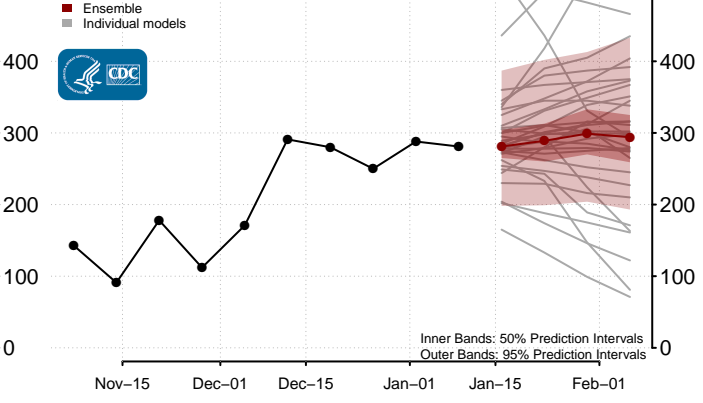
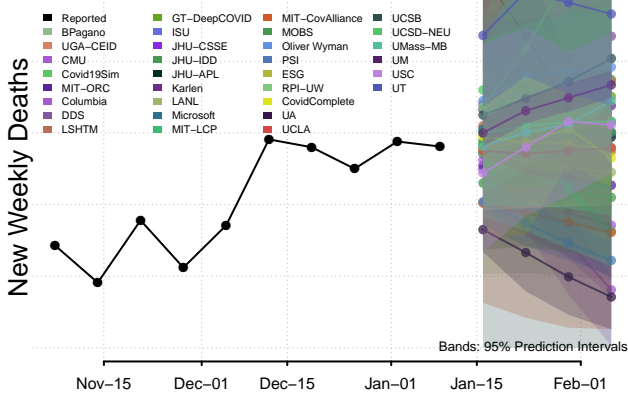


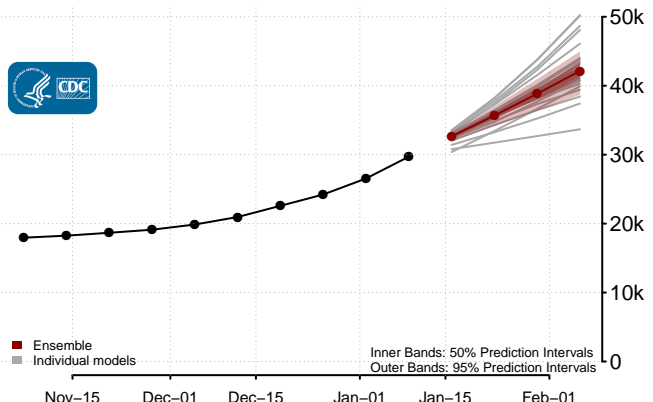
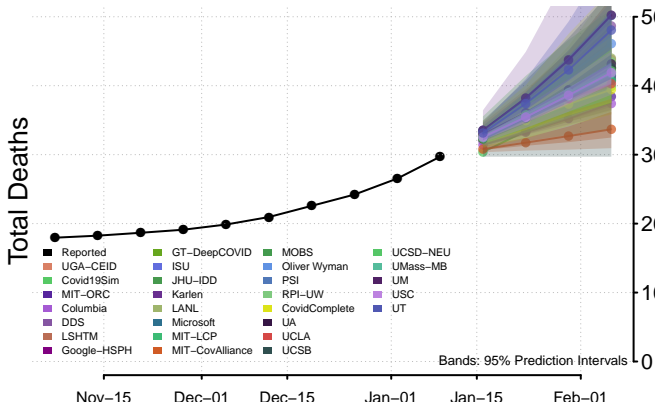
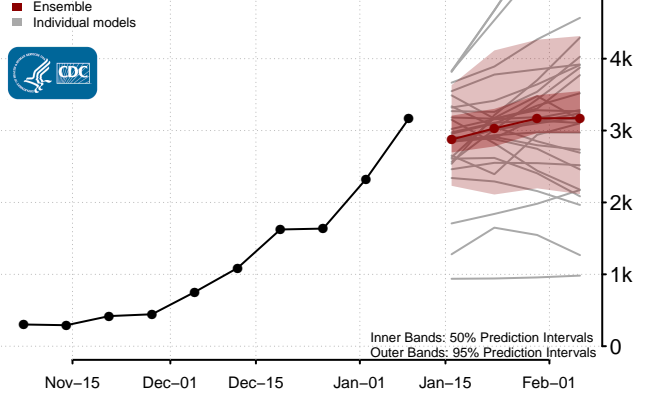
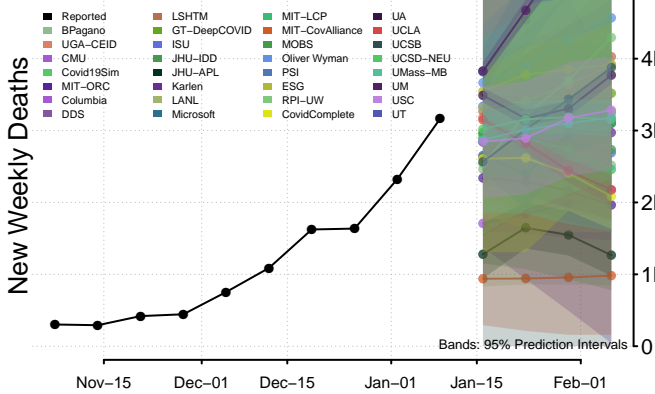
### Arizona



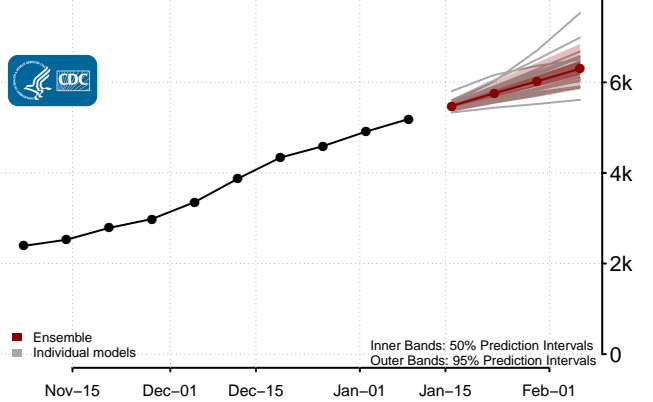
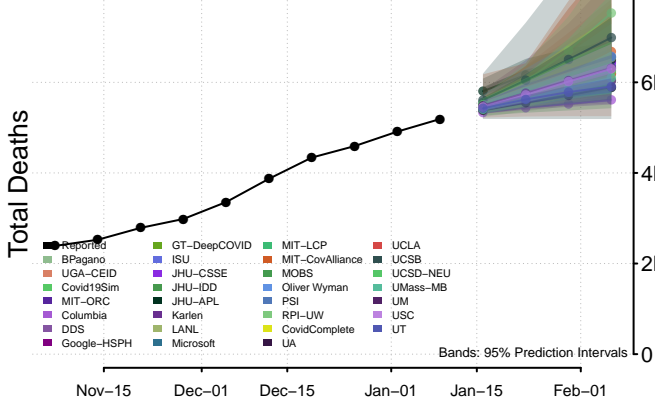
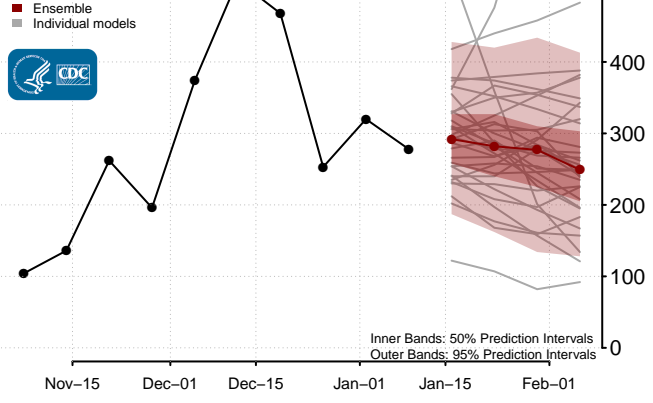
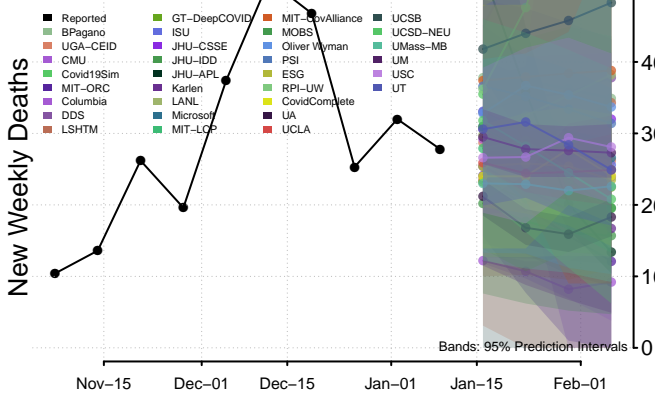
### Arkansas



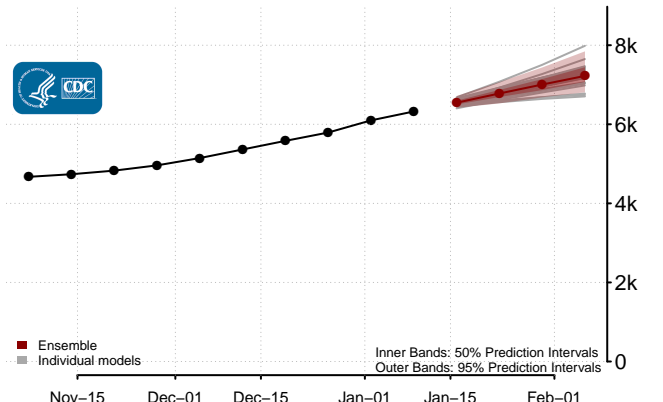
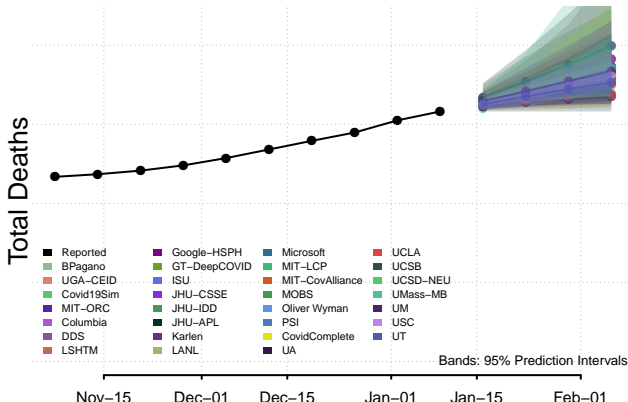
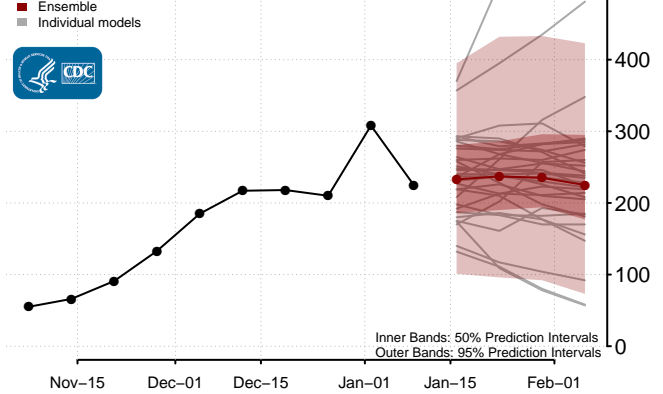
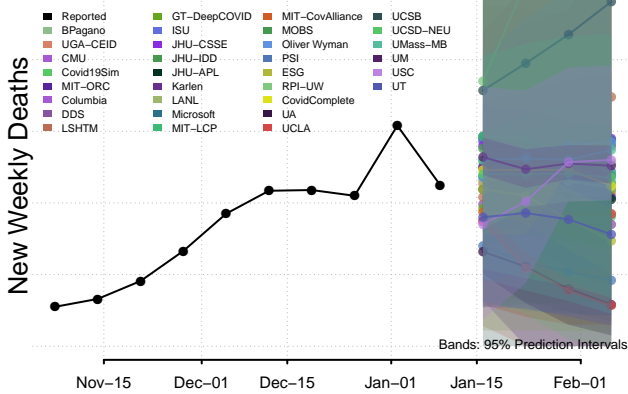
### California



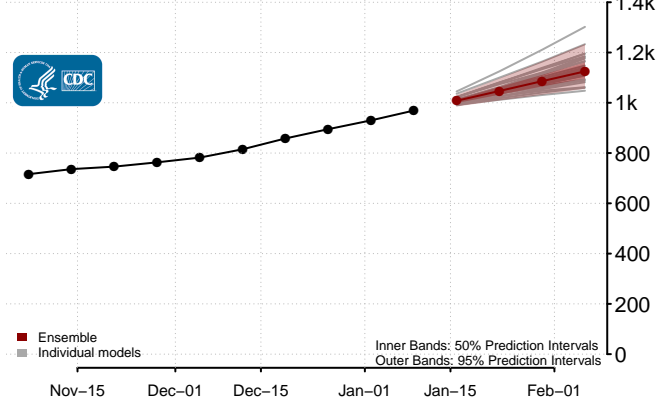
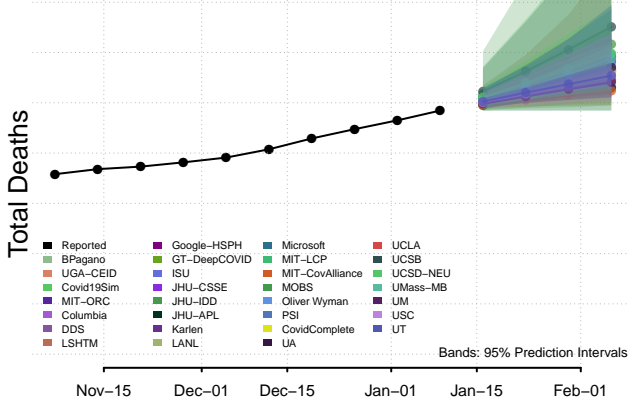
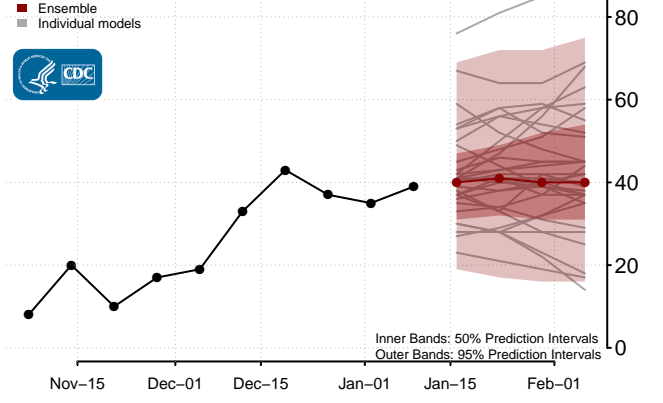
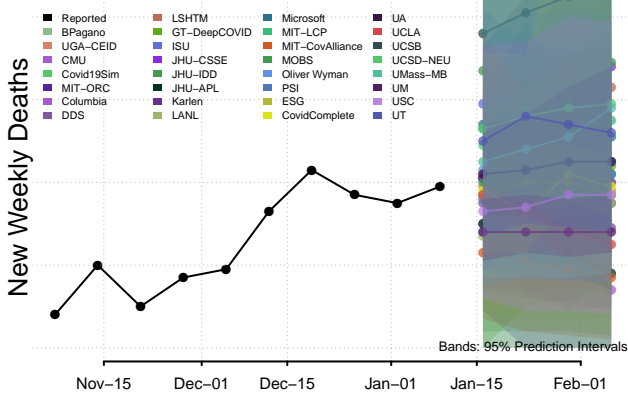
### Colorado

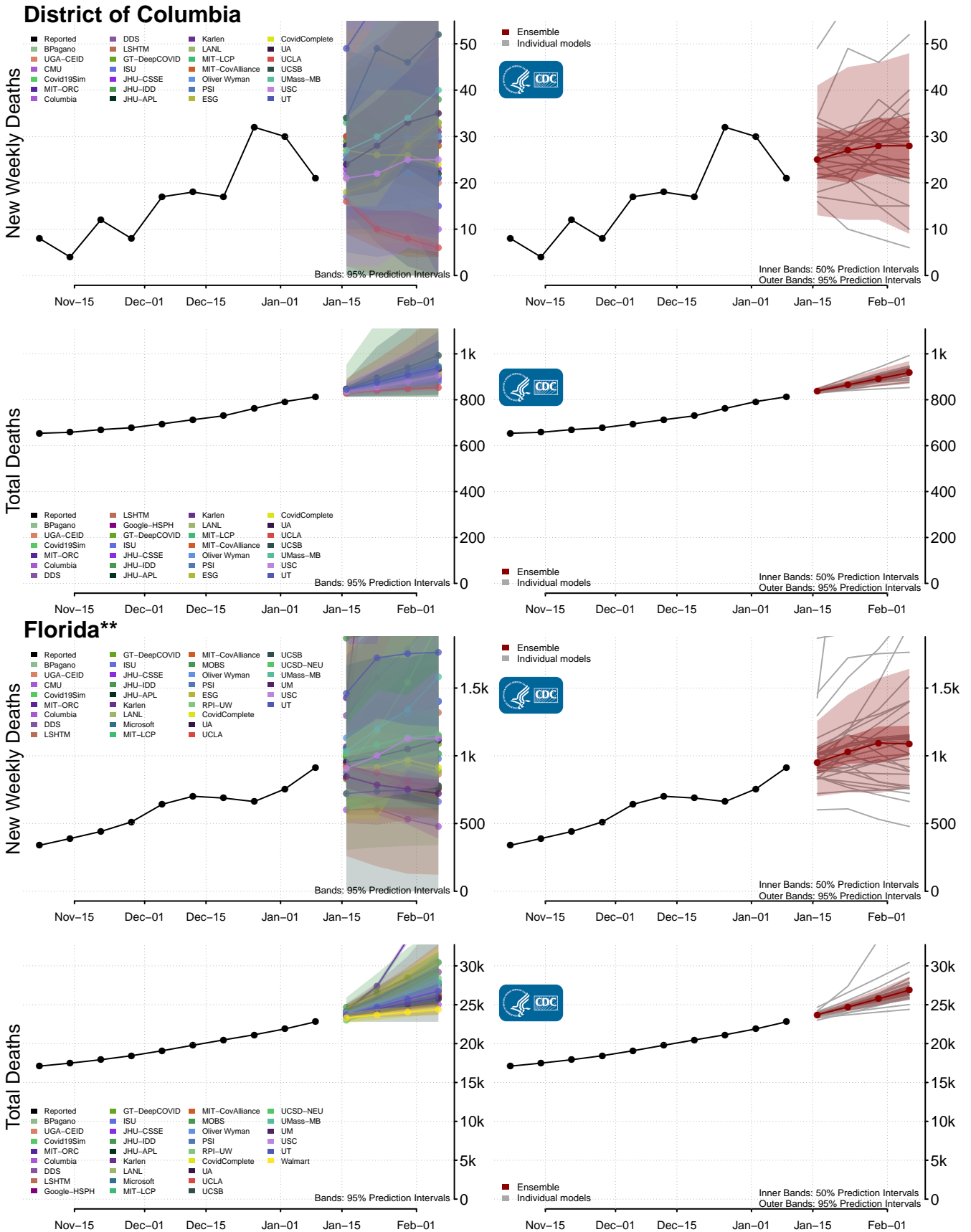


### Connecticut

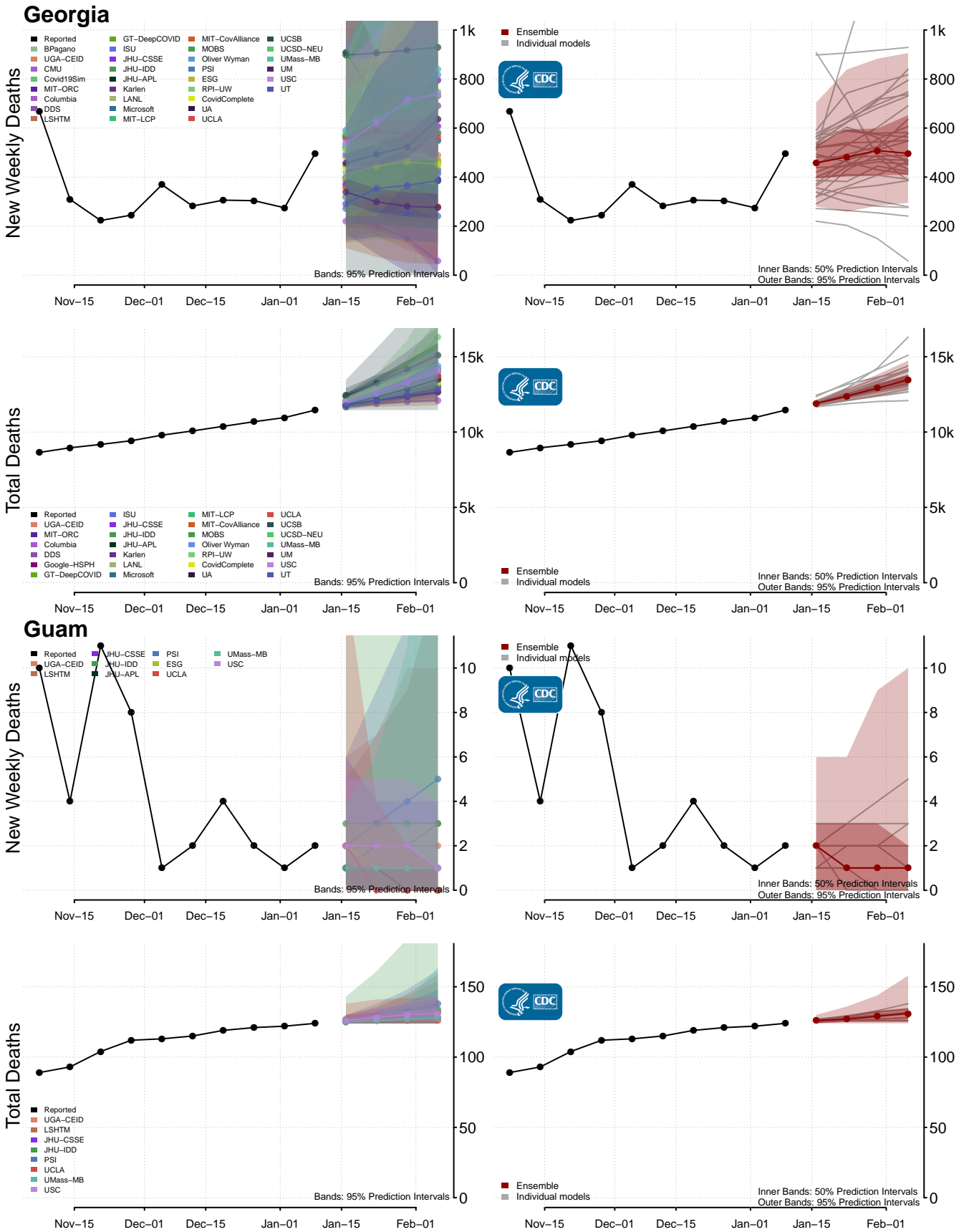


### Delaware

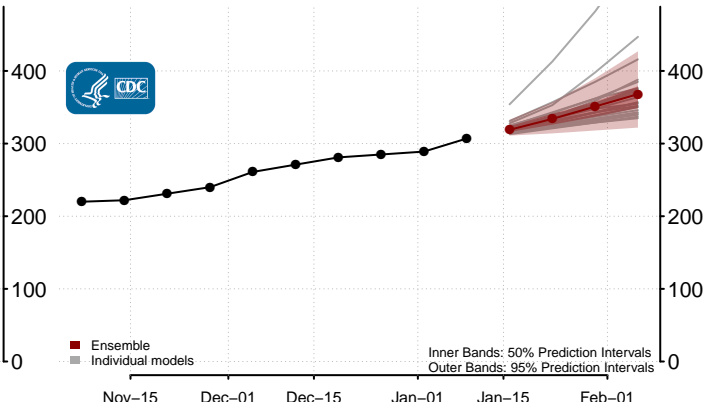
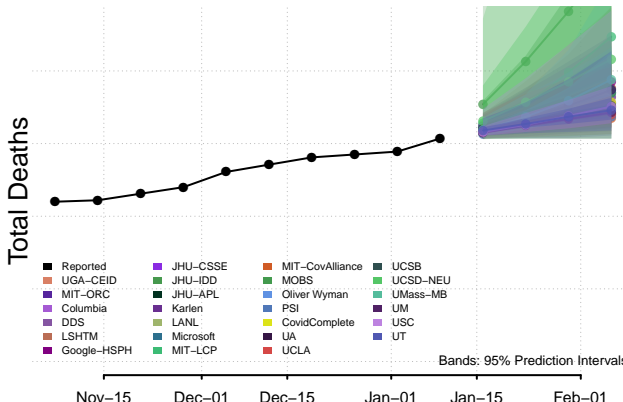
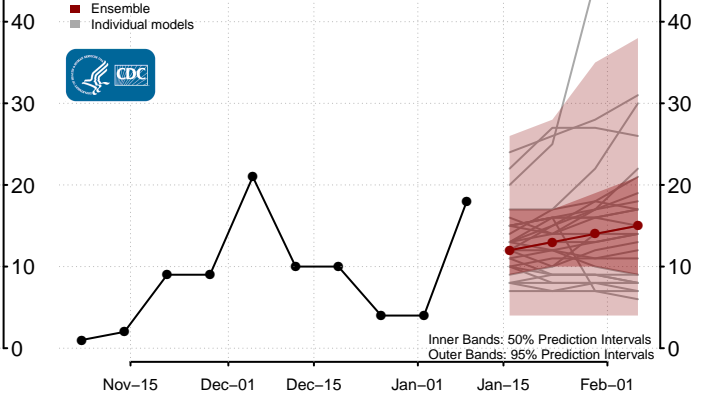
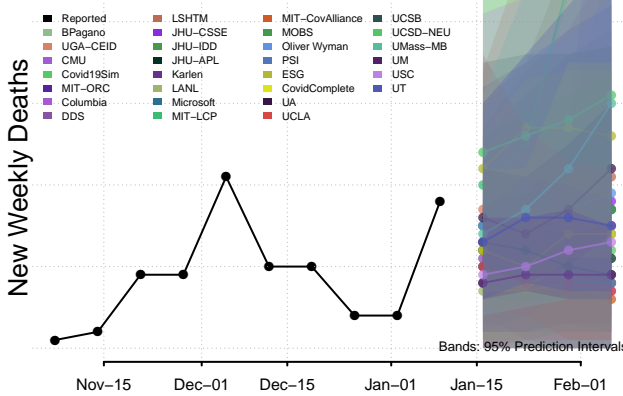




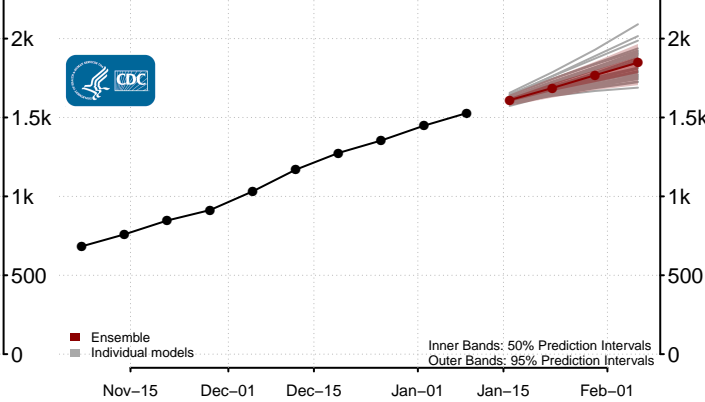
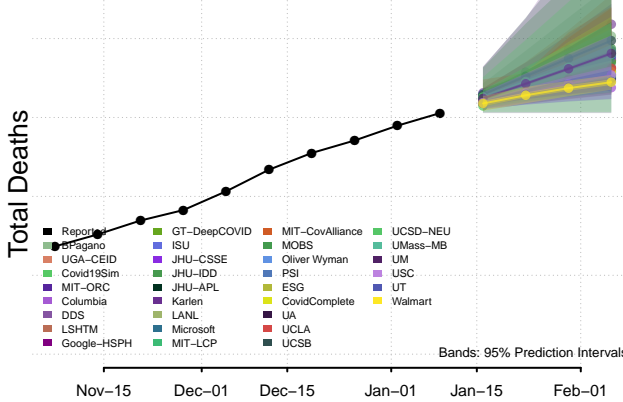
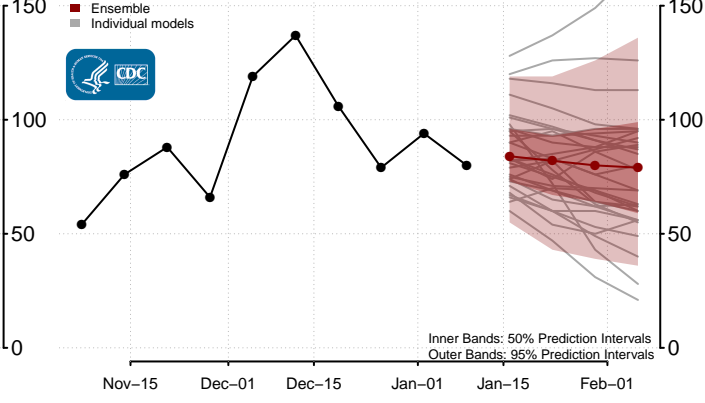
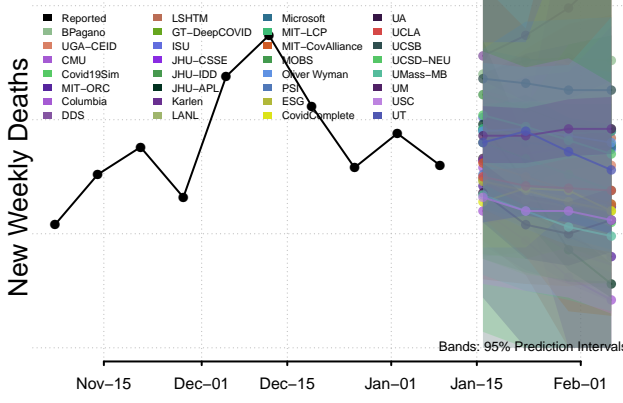
\*\*New weekly deaths may increase in this location over the next four weeks. For these locations, the ensemble forecast indicates a probability of 0.75 or greater that more deaths will be reported in week four of the forecast than in the last reported week.



### Hawaii

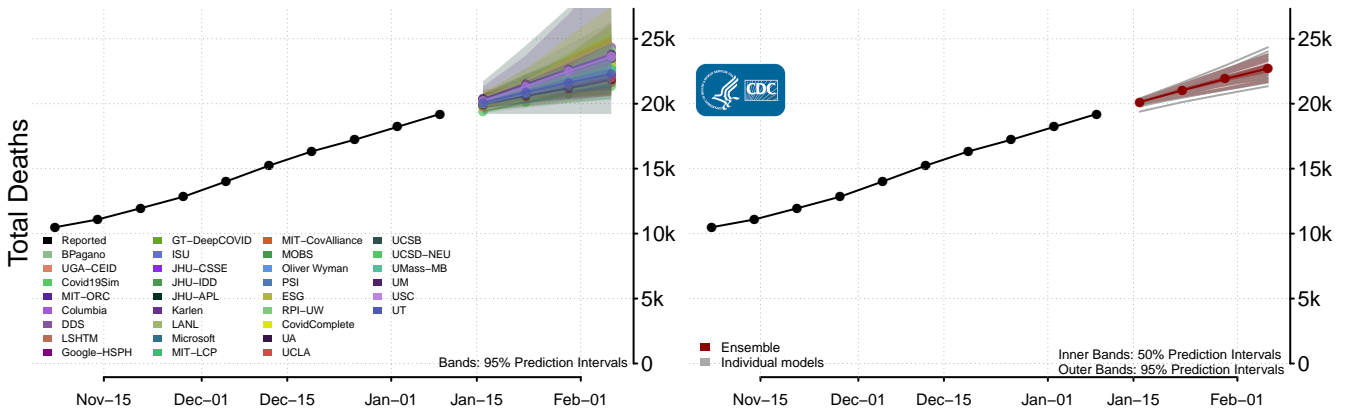
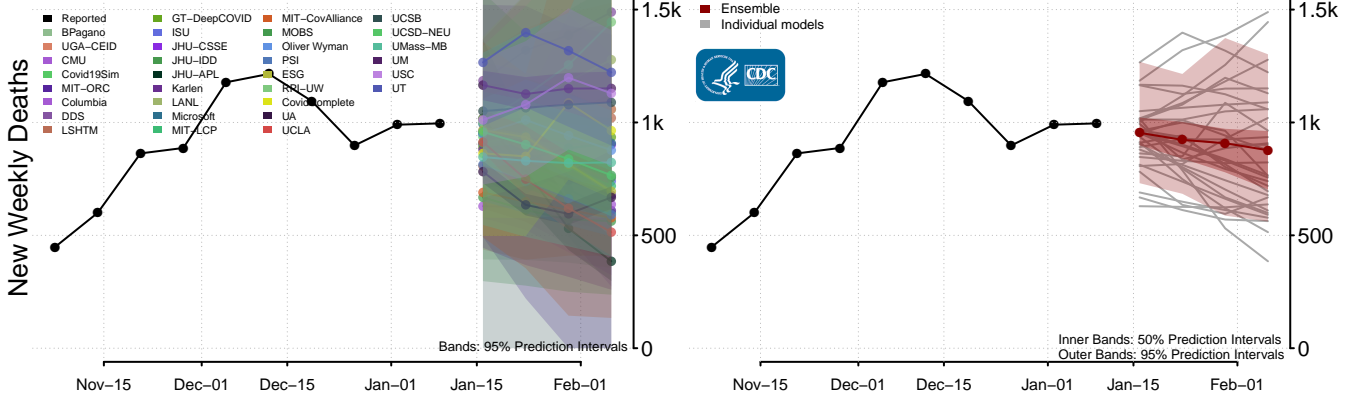


### Idaho

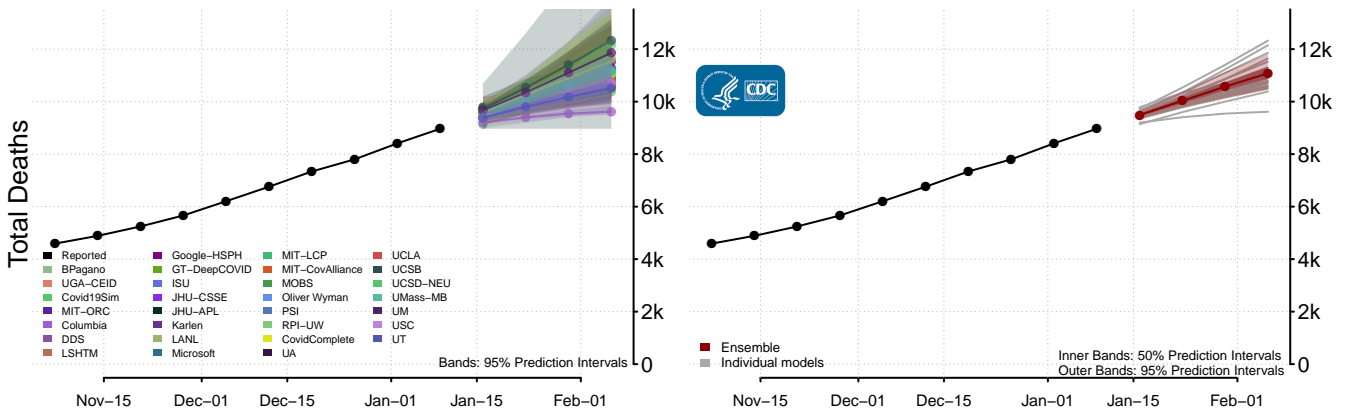
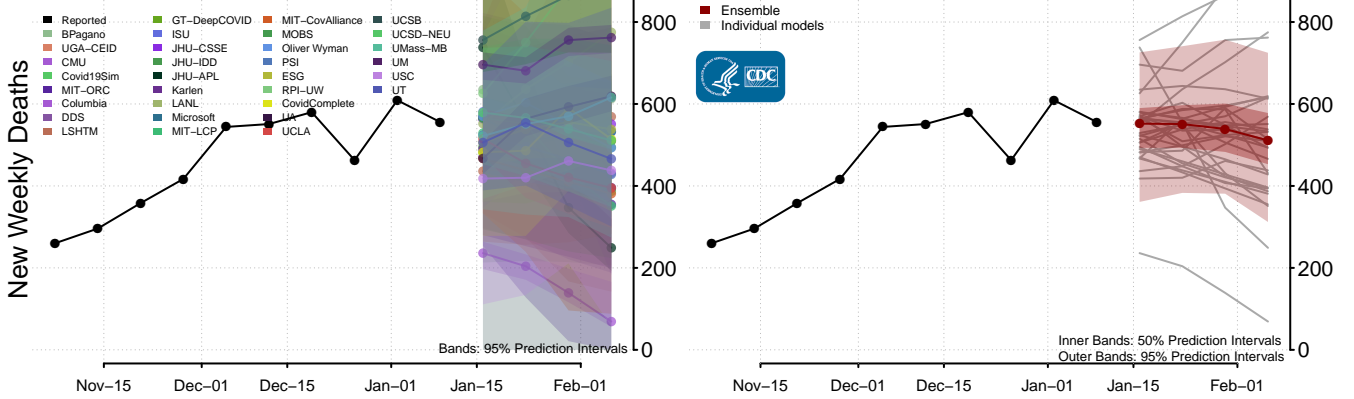


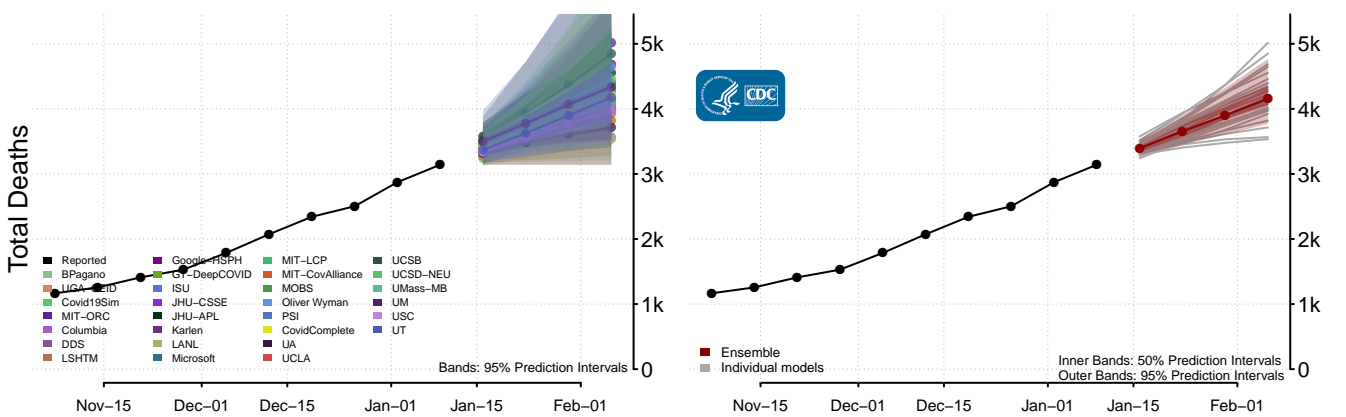
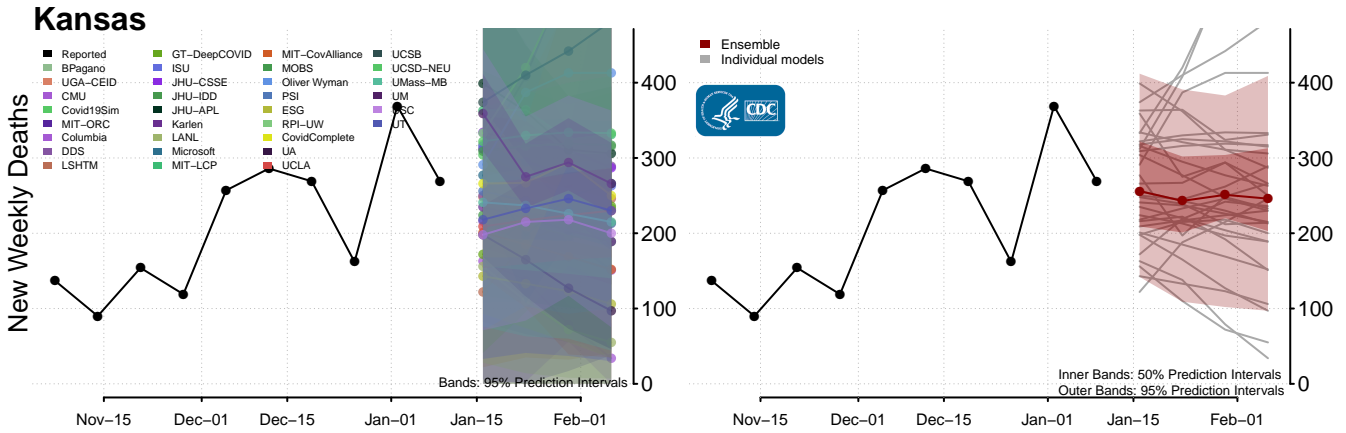
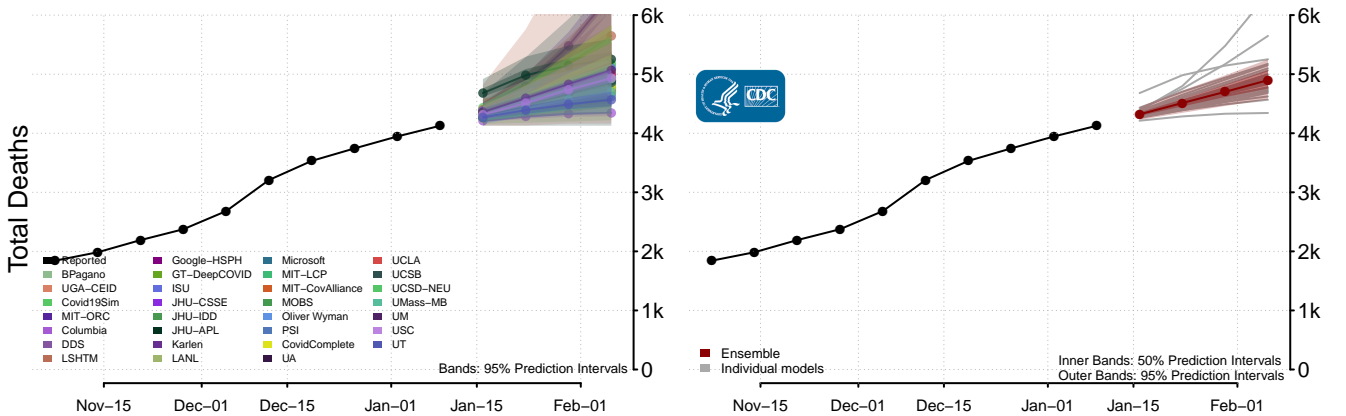
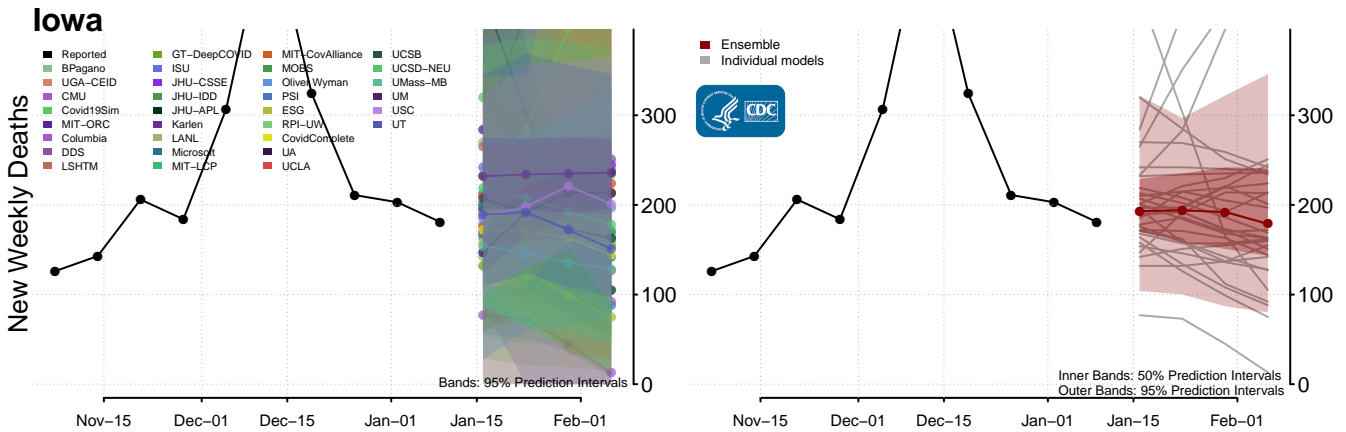


### Illinois

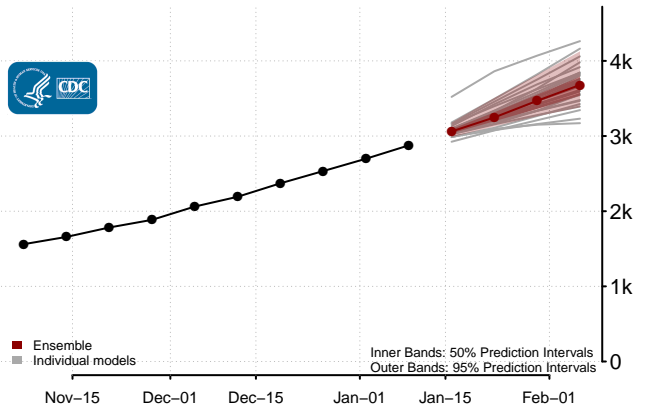
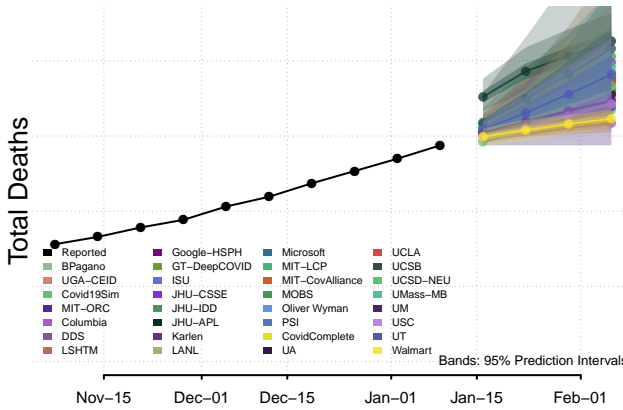
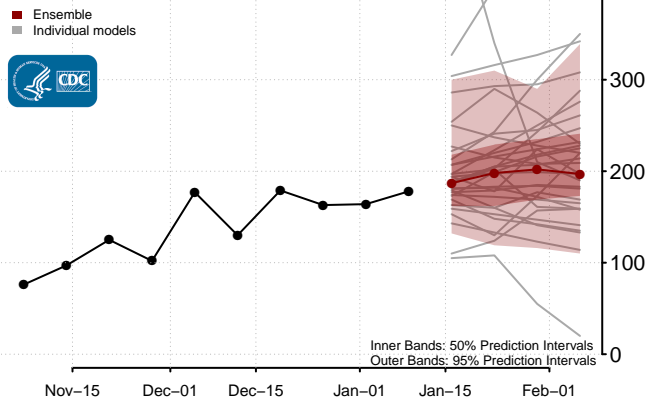
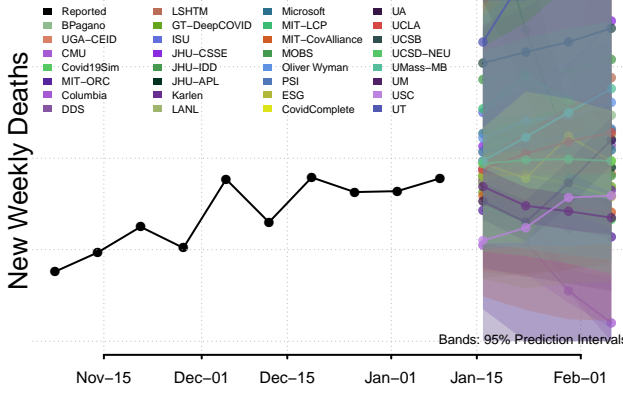


### Indiana

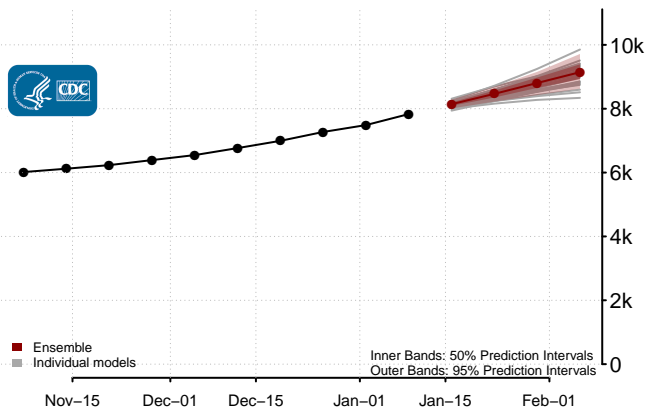
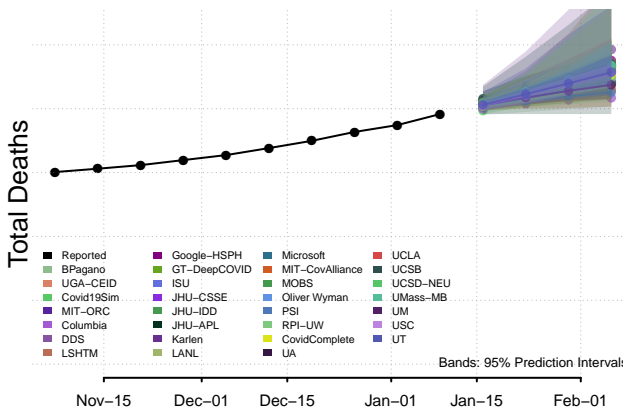
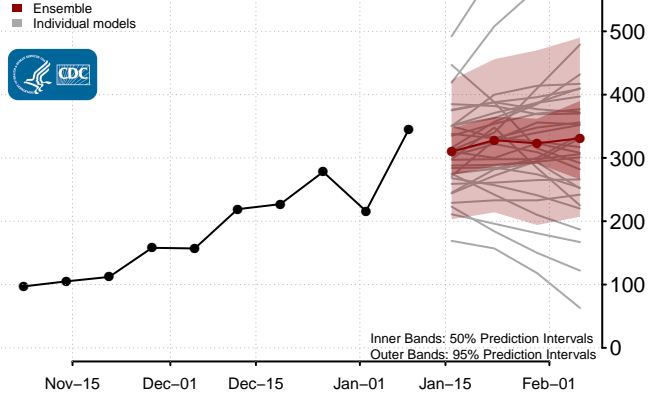
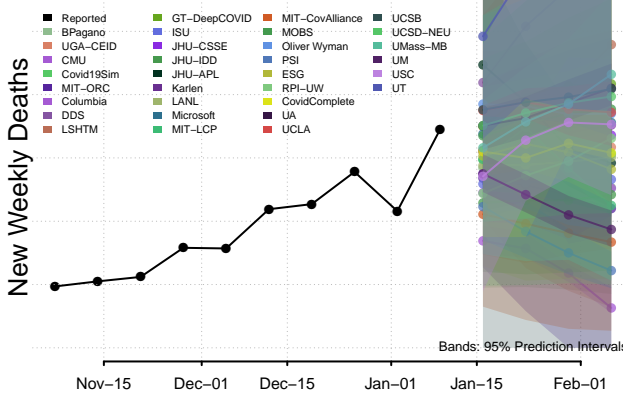




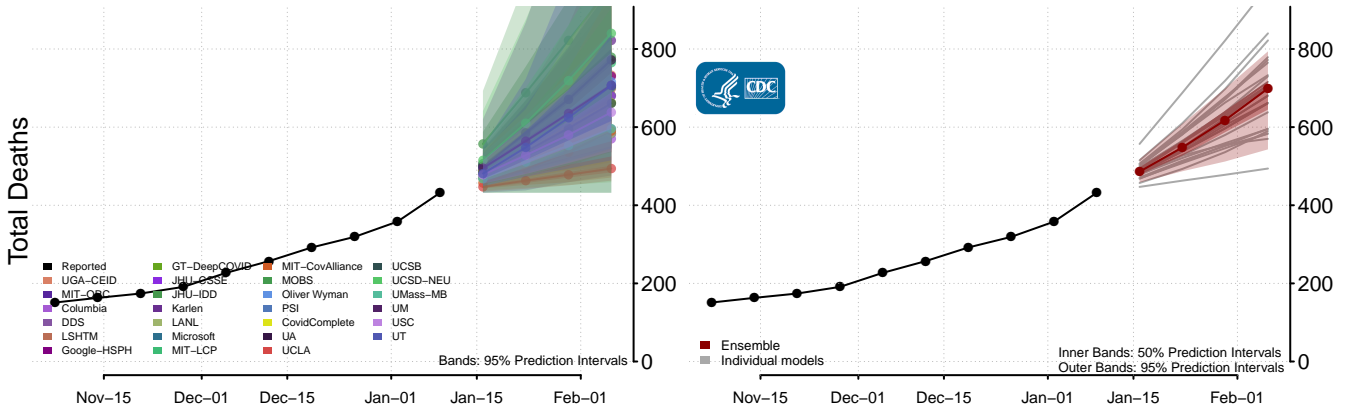
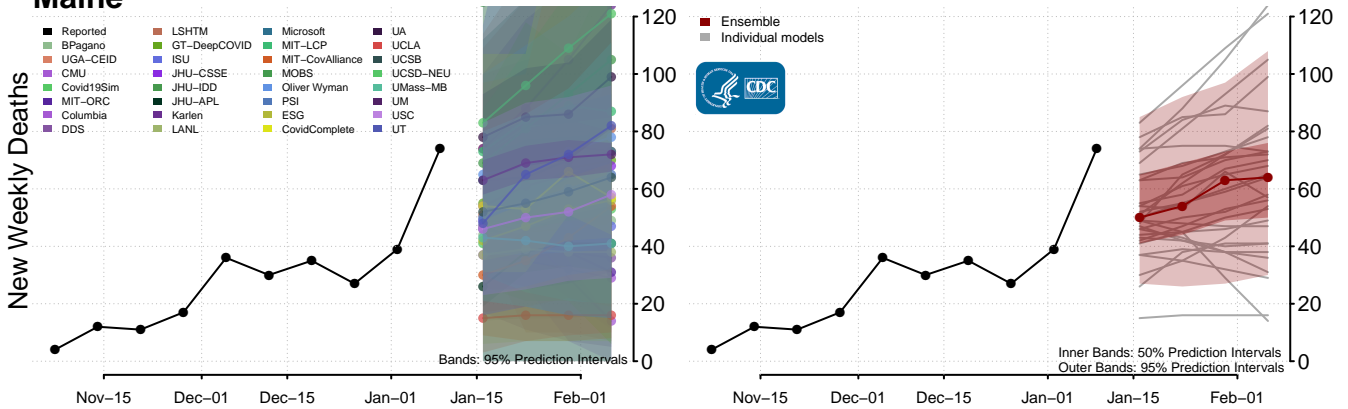
### Kentucky



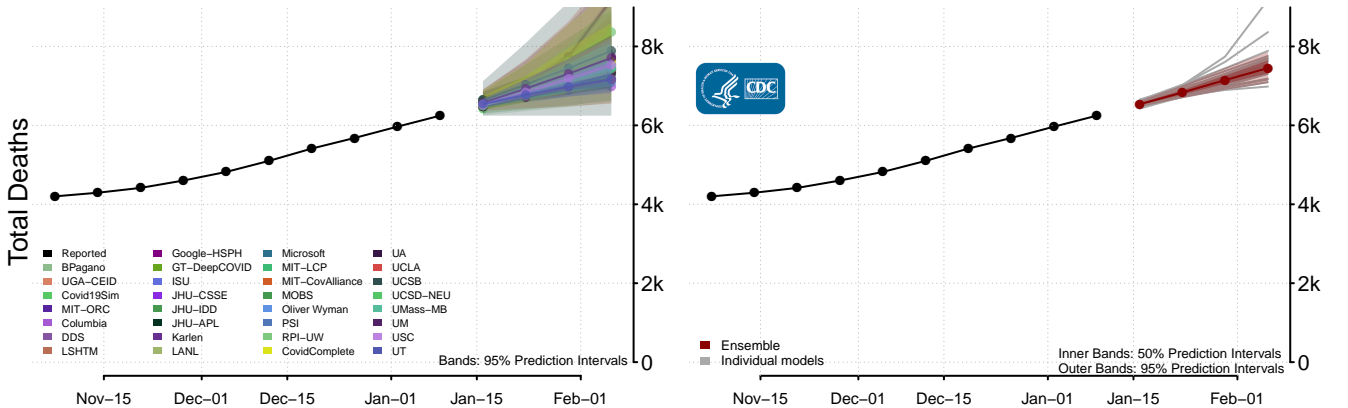
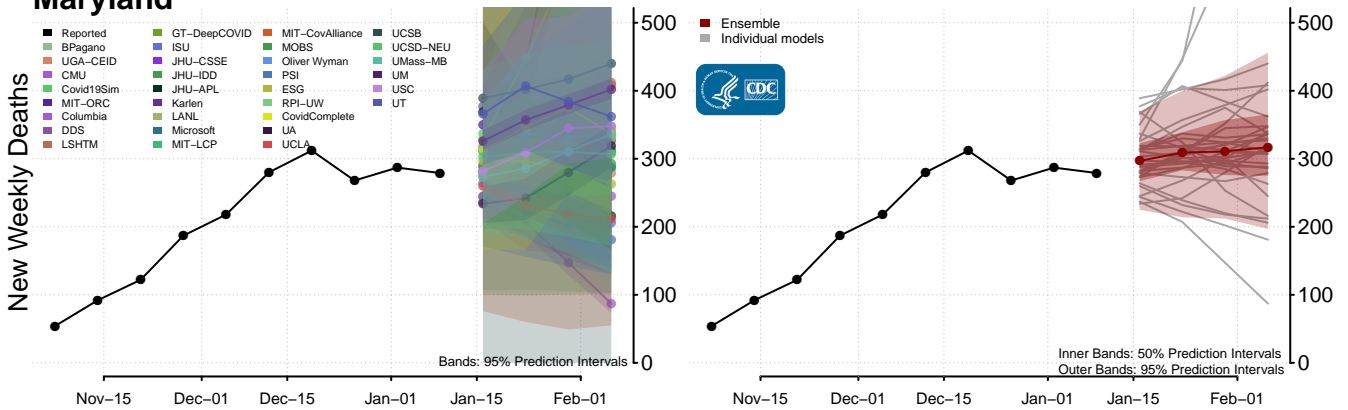
### Louisiana



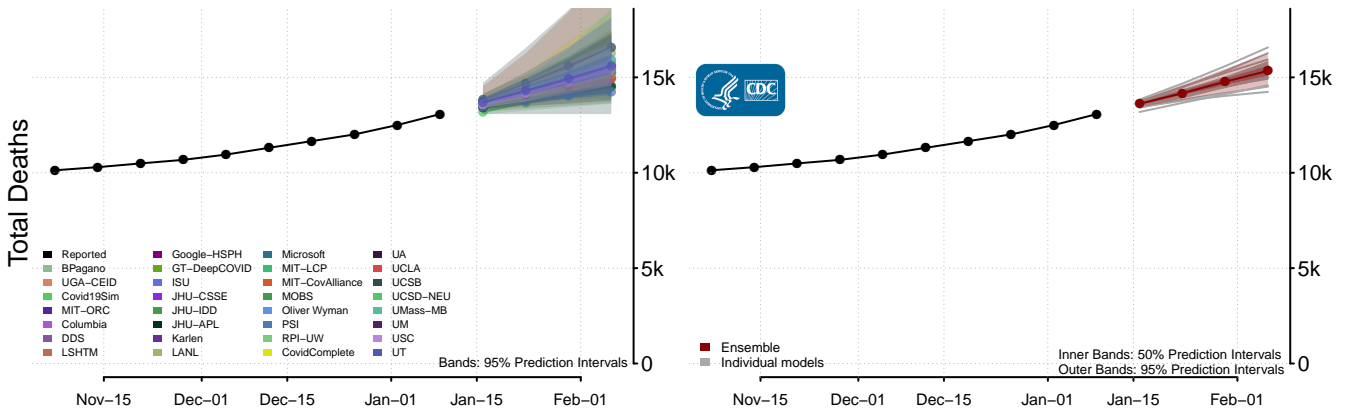
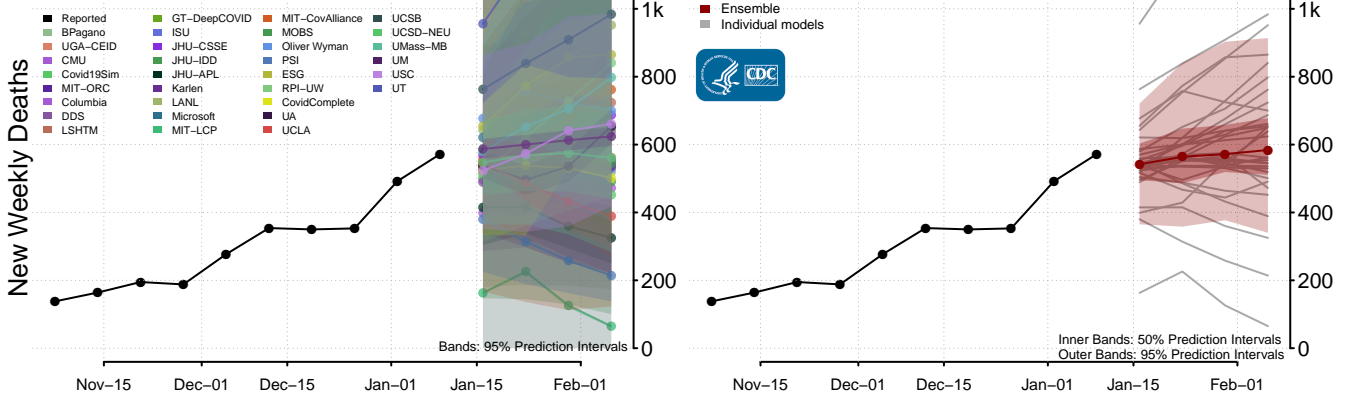
### Maine



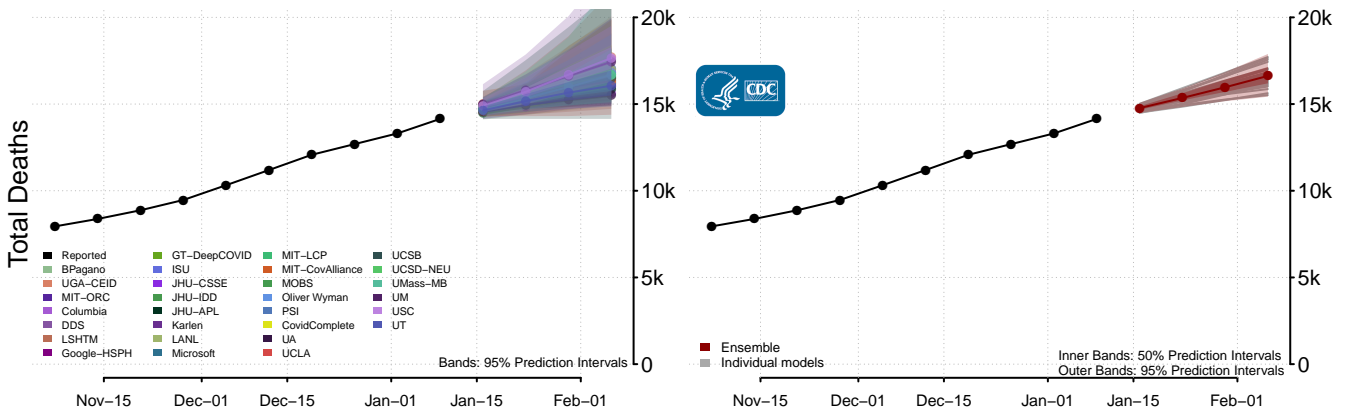
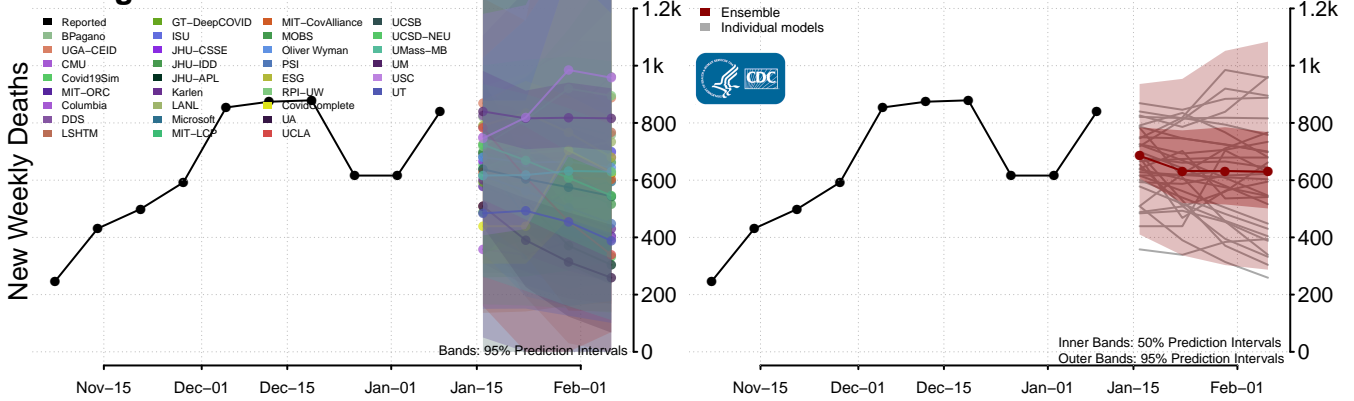
### Maryland

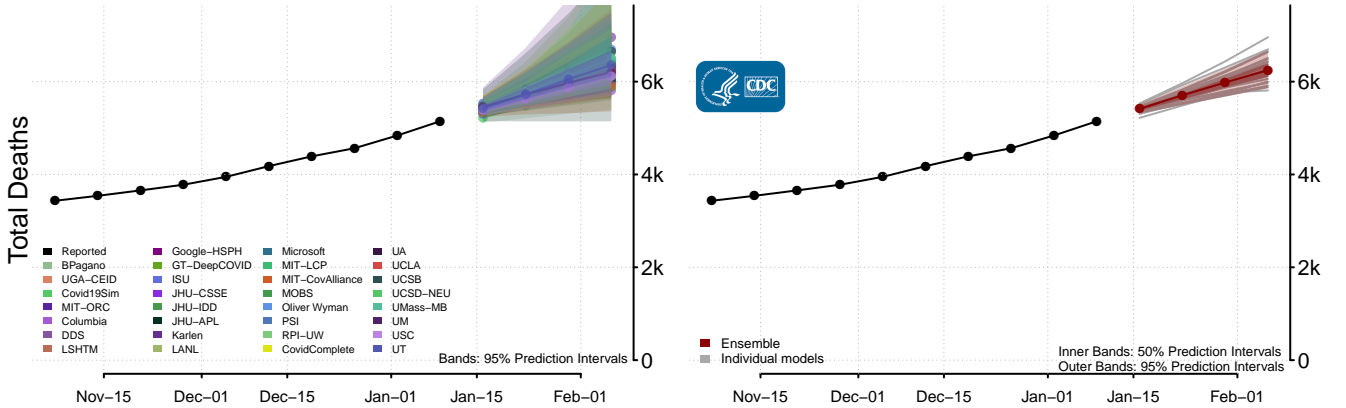
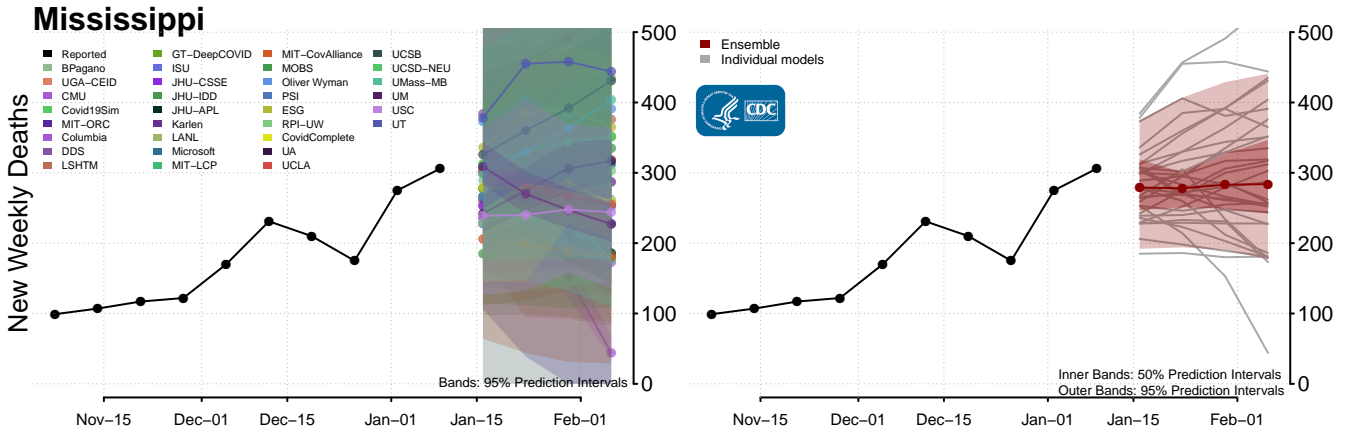
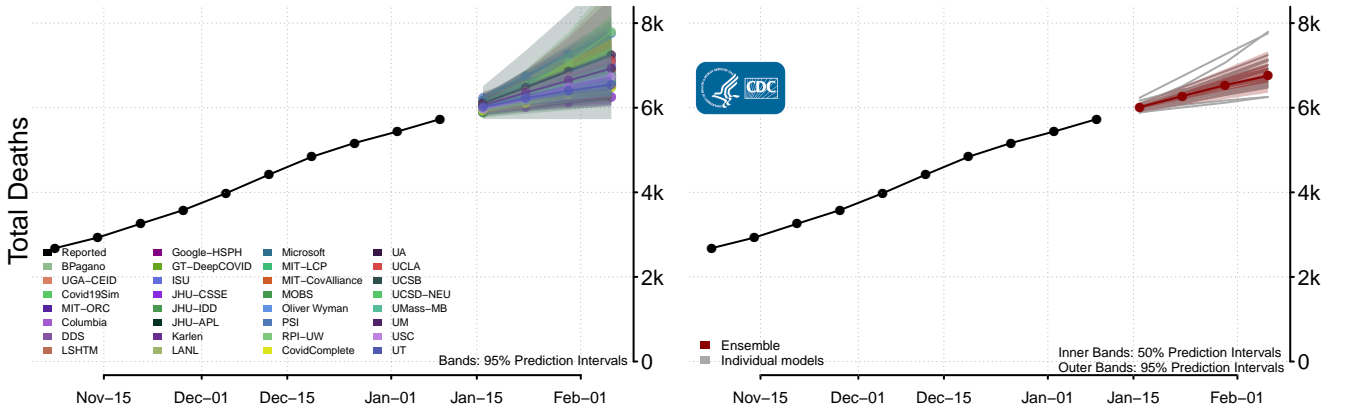
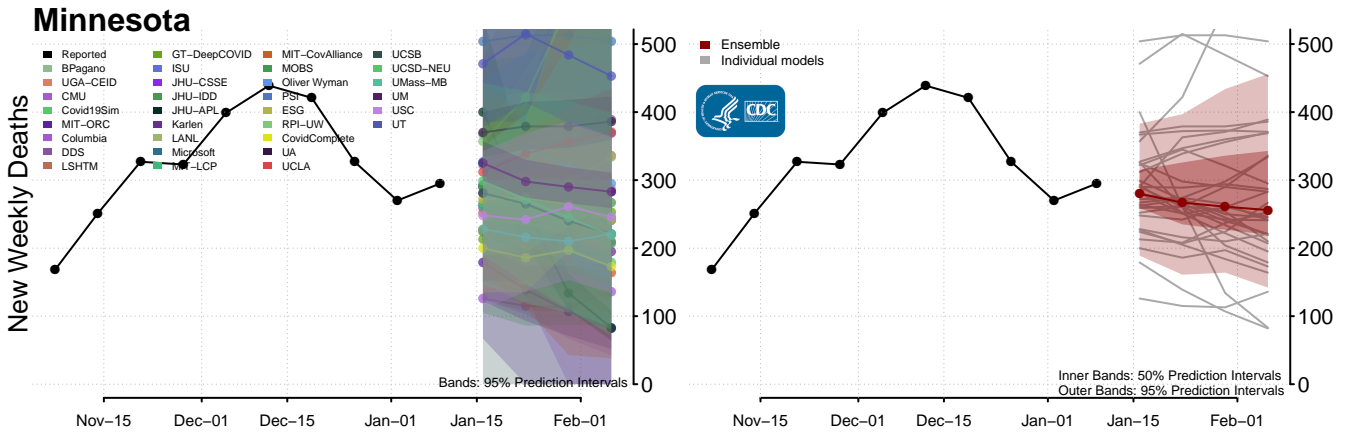


### Massachusetts

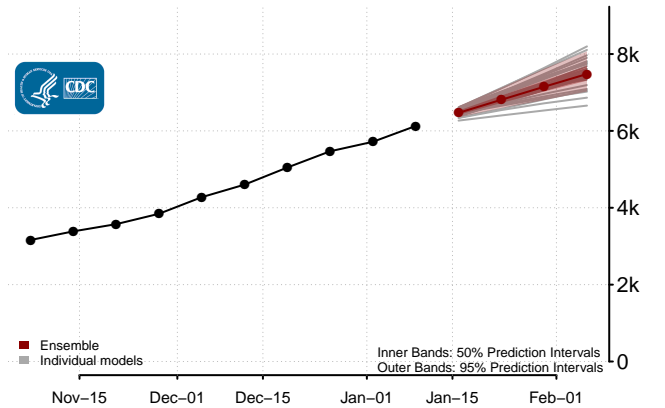
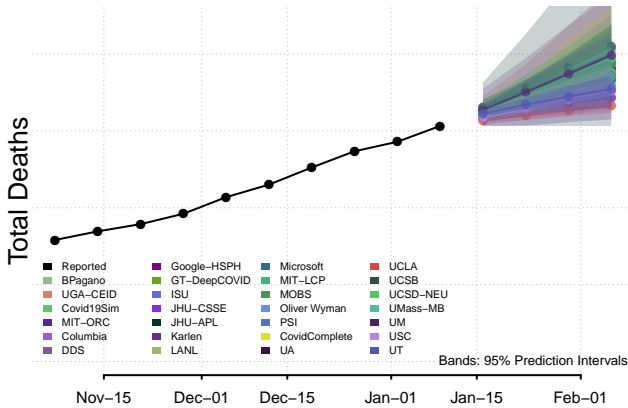
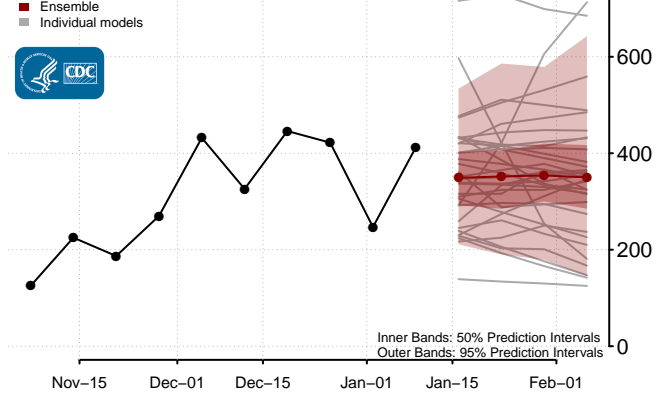
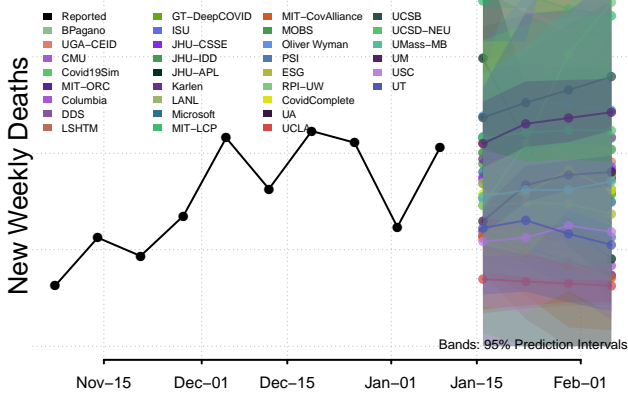


### Michigan

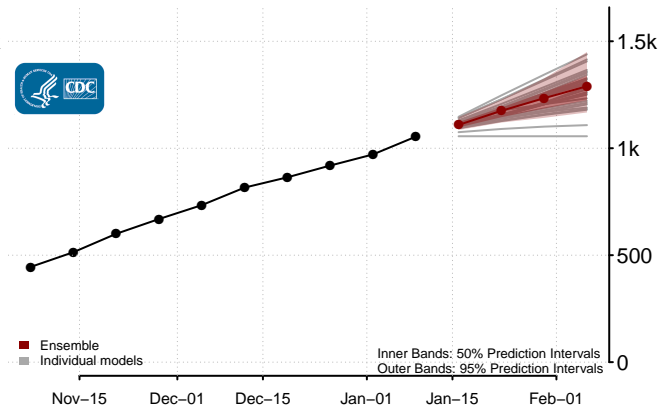
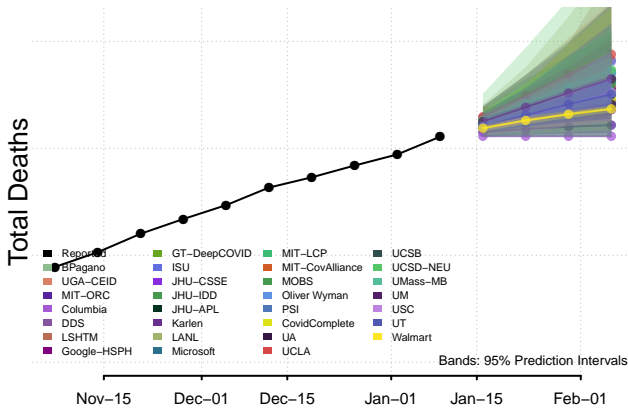
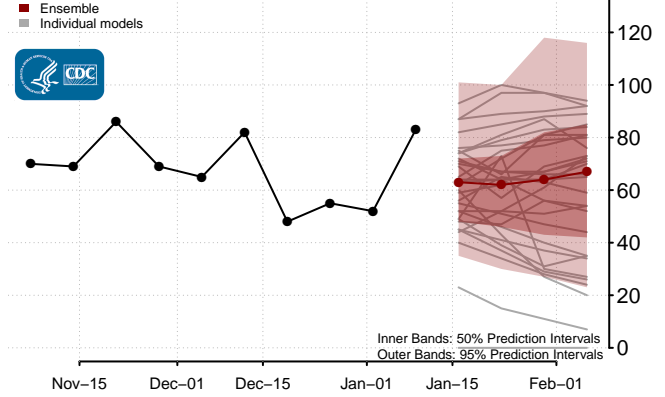
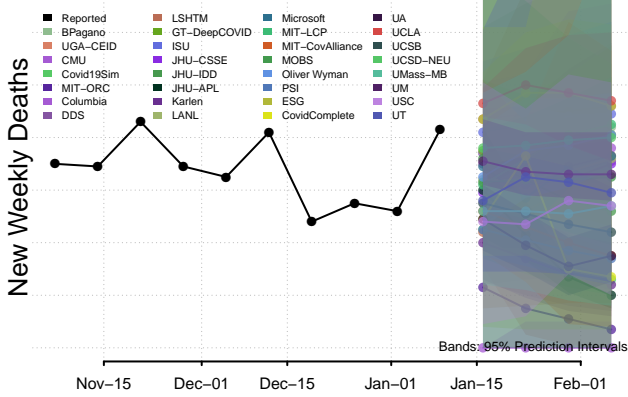




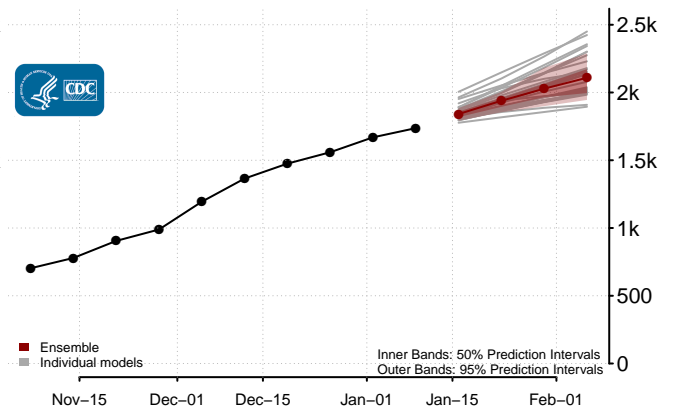
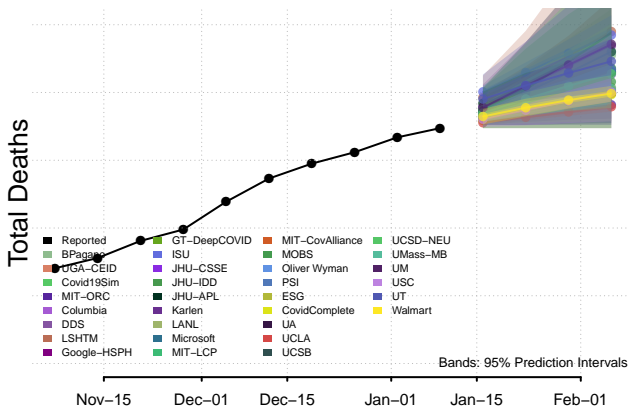
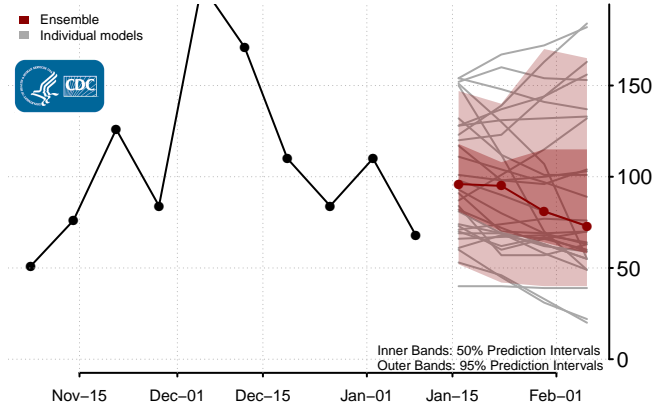
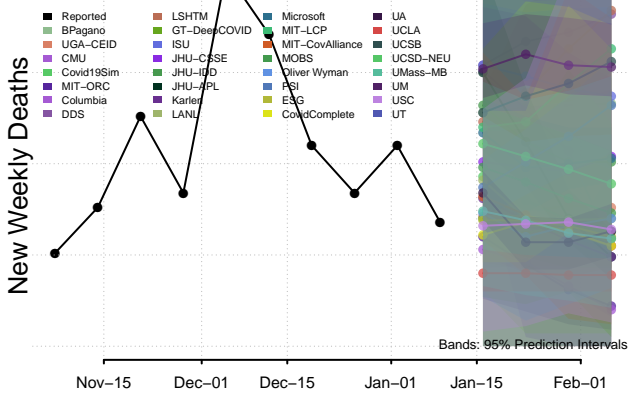
### Missouri



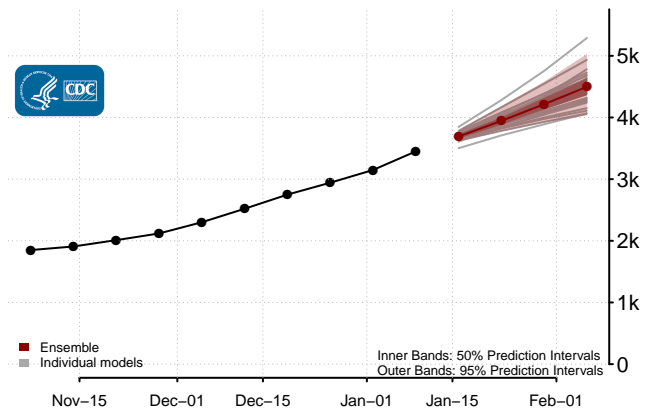
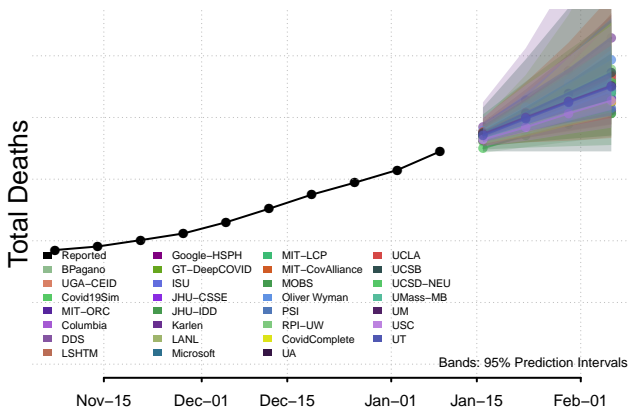
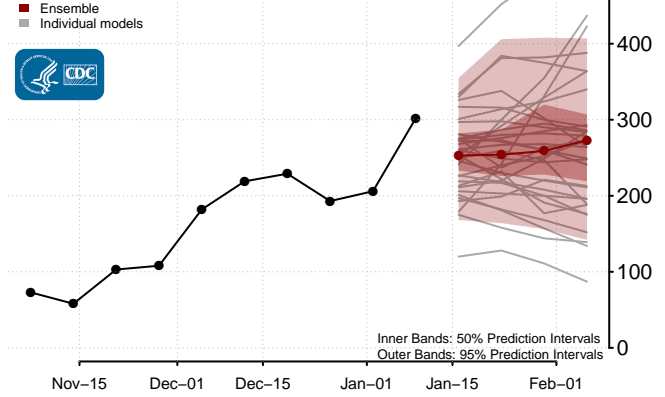
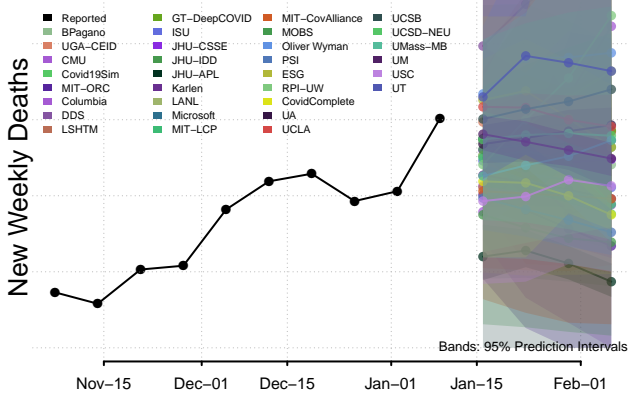
### Montana



### Nebraska

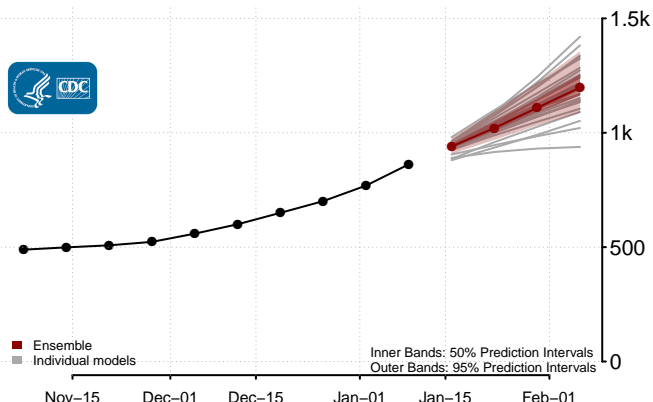
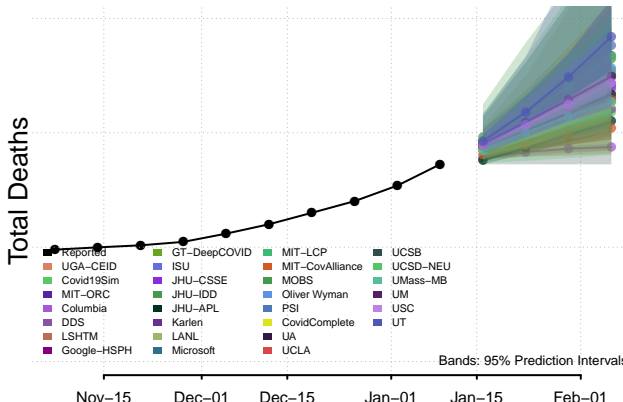
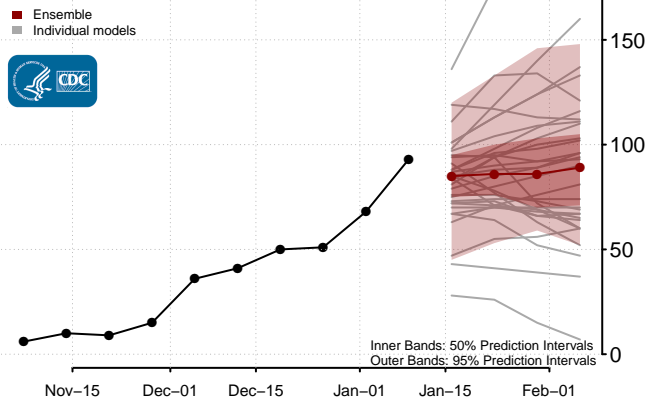
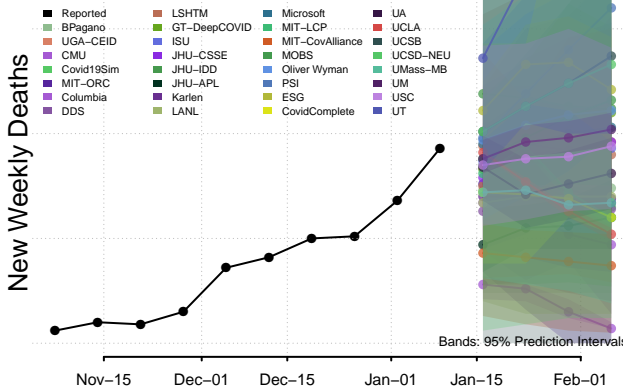


### Nevada

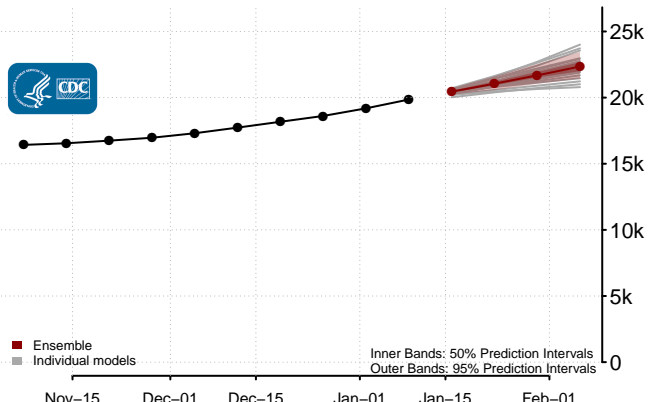
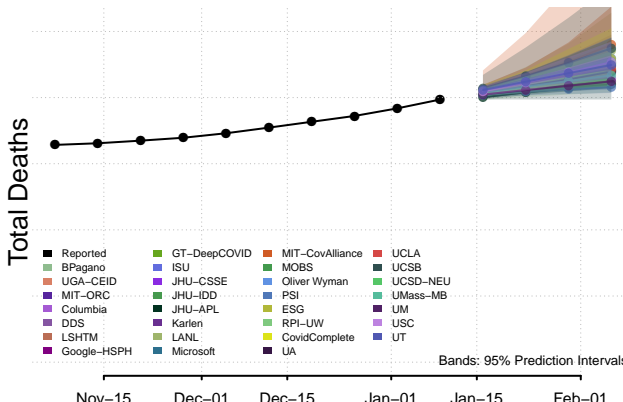
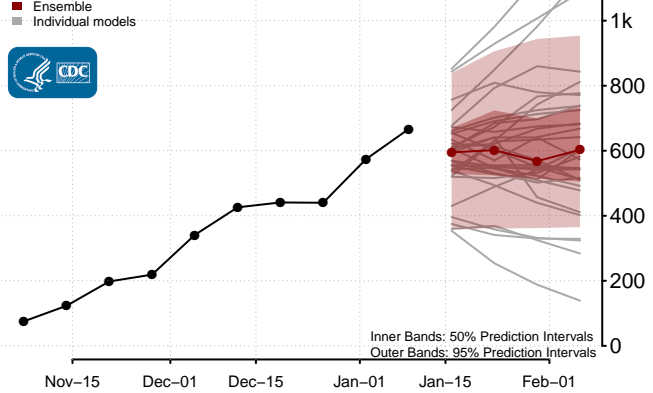
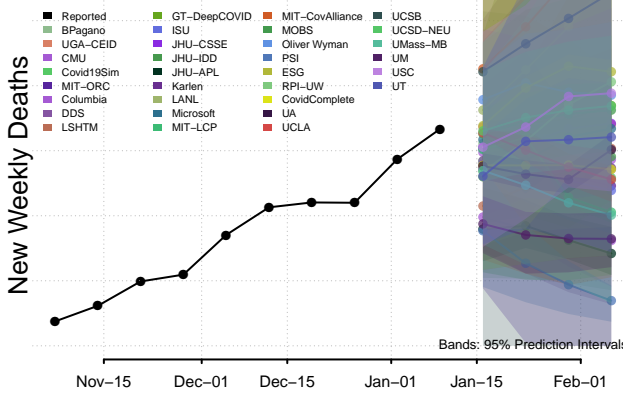


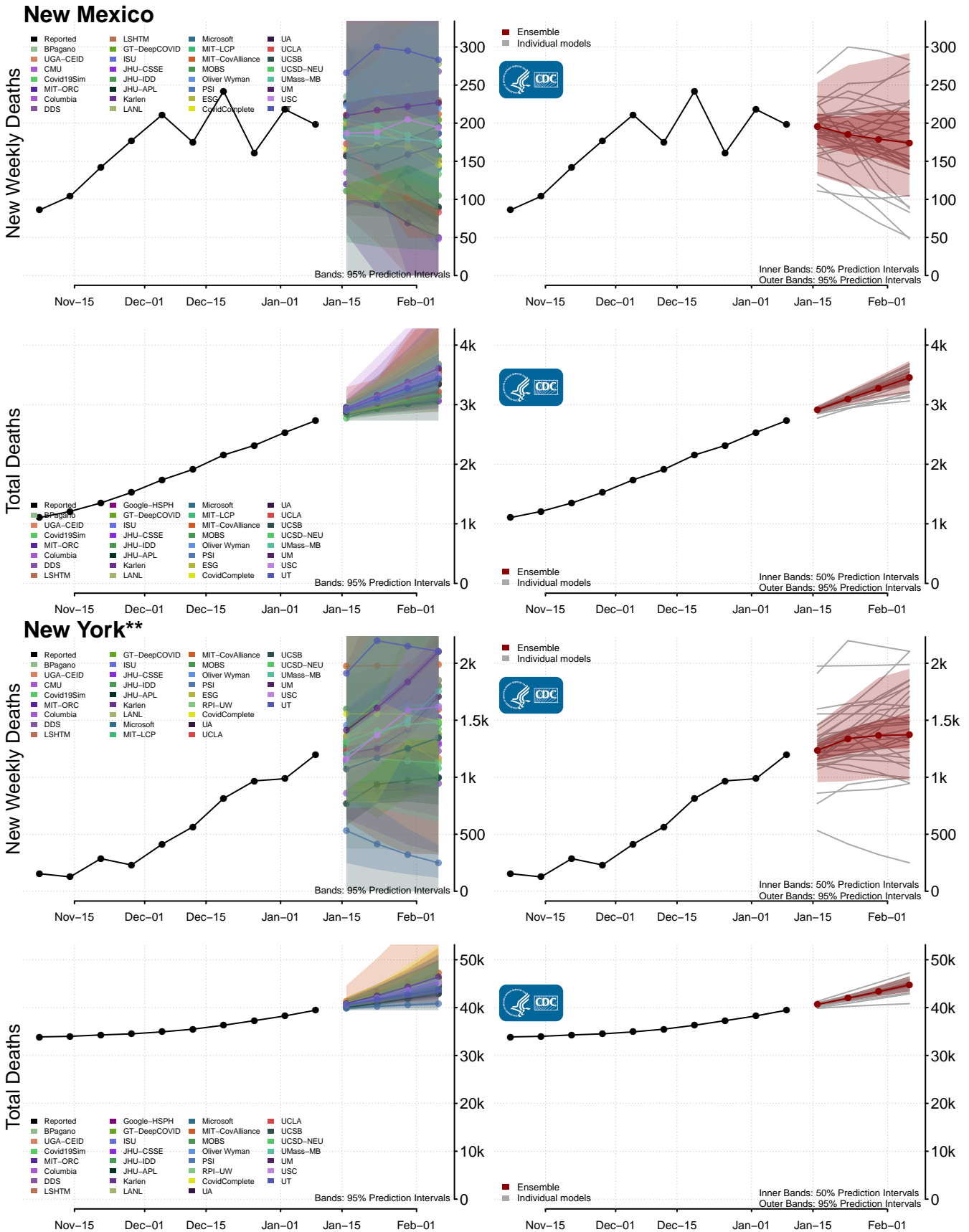


### New Hampshire



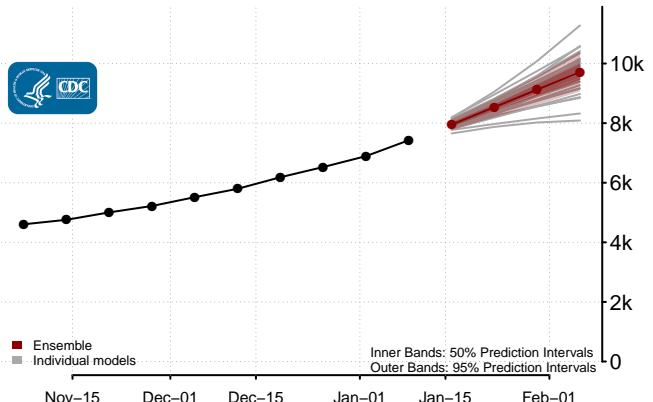
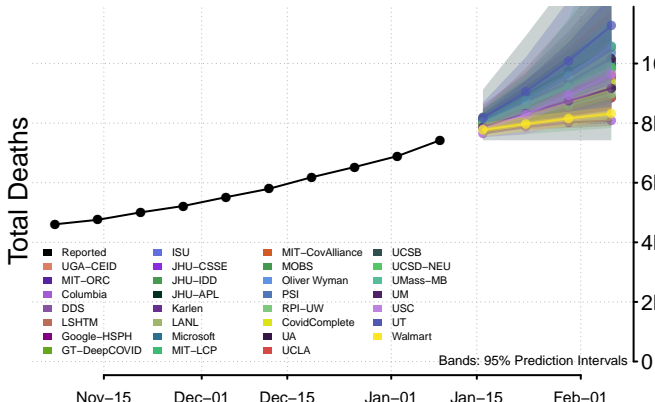
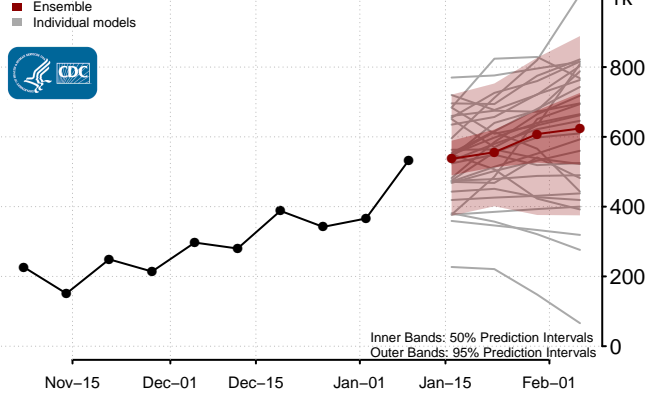
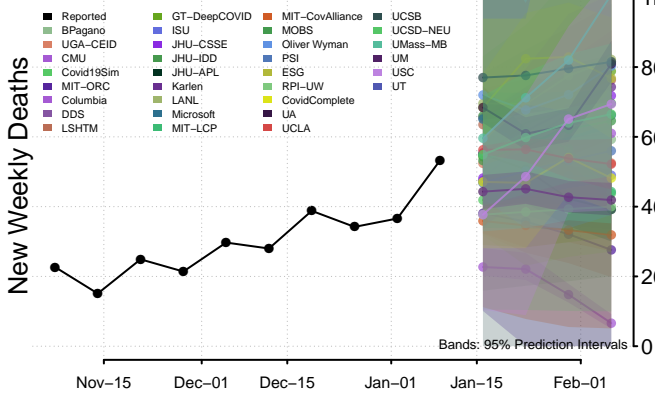
### New Jersey



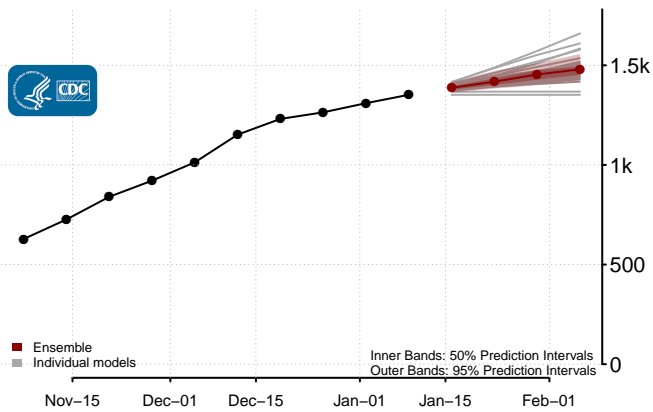
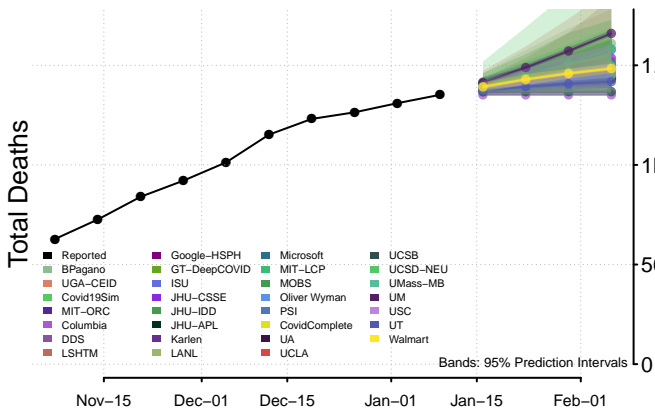
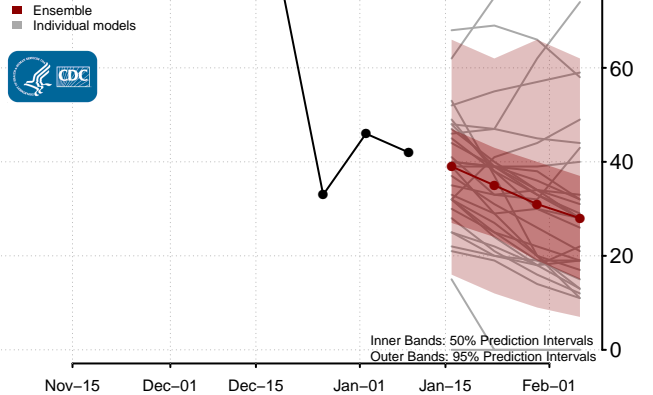
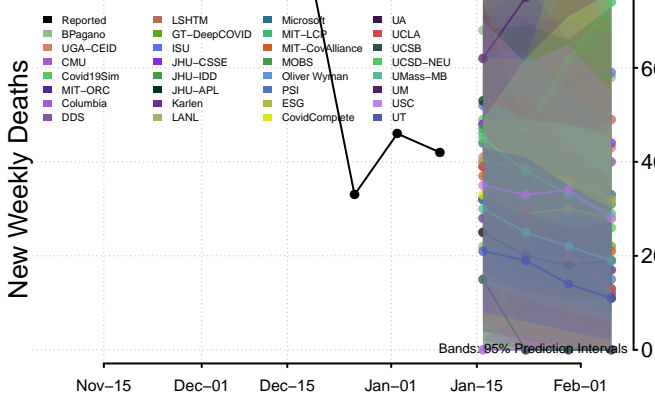


\*\*New weekly deaths may increase in this location over the next four weeks. For these locations, the ensemble forecast indicates a probability of 0.75 or greater that more deaths will be reported in week four of the forecast than in the last reported week.

### North Carolina

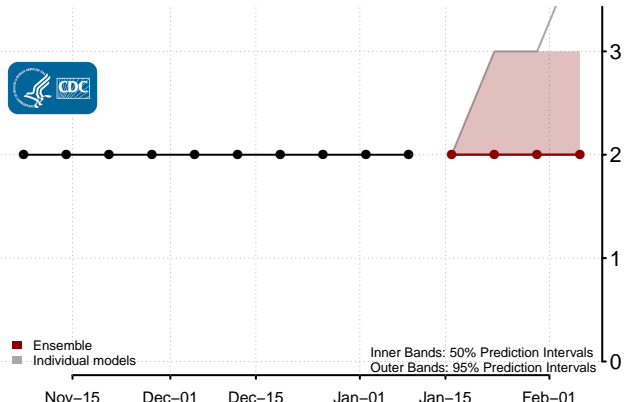
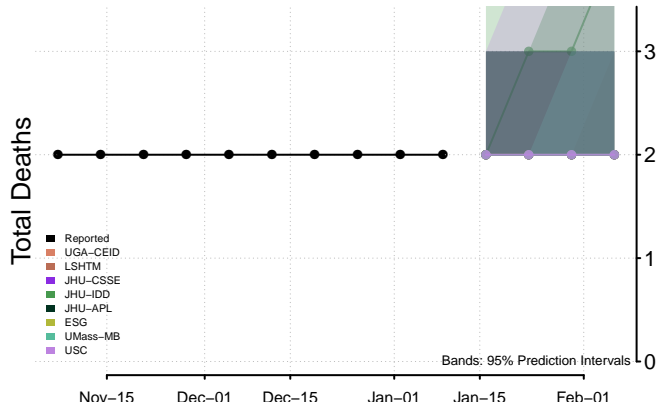
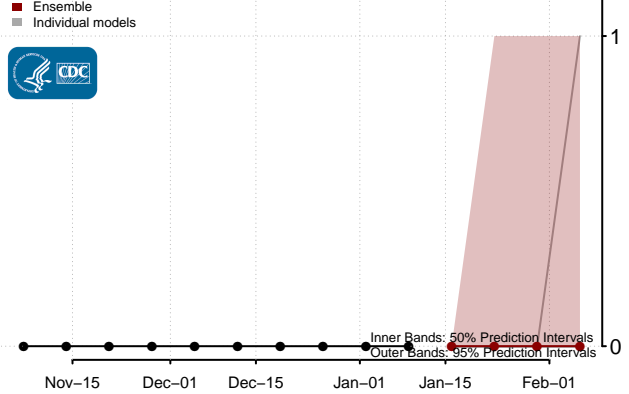
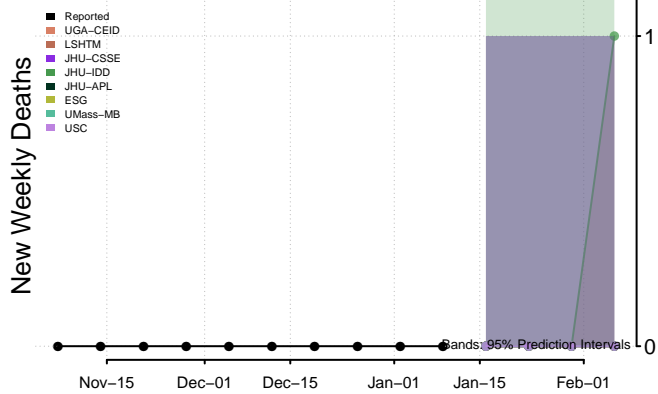


### North Dakota\*

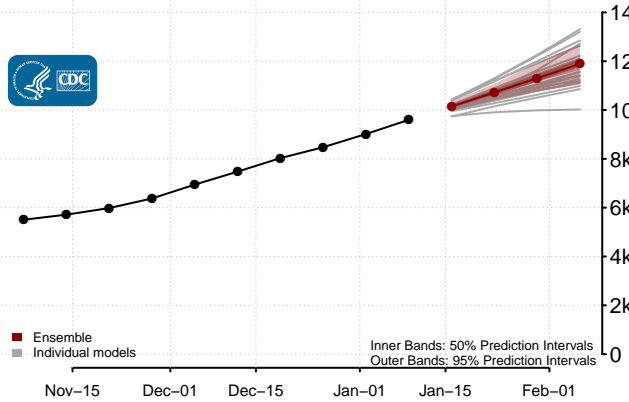
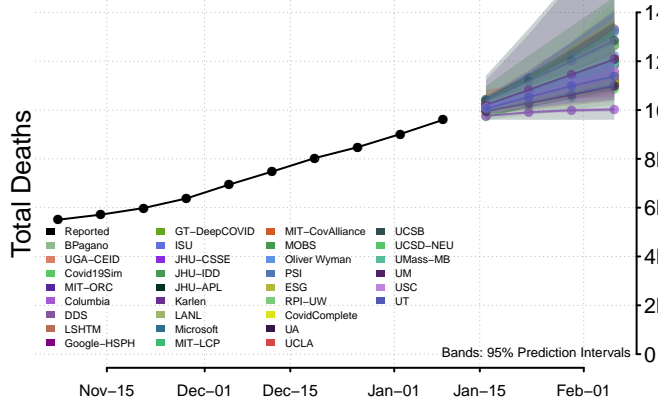
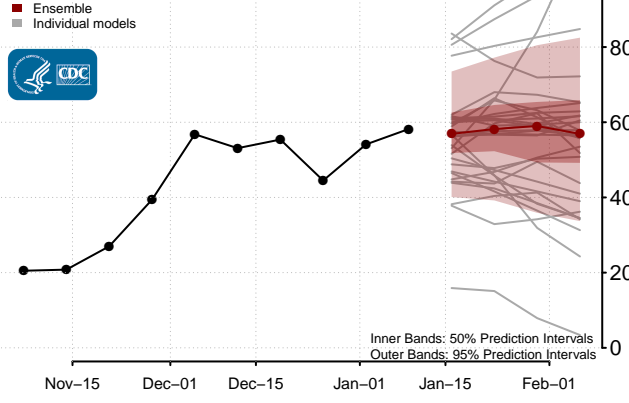
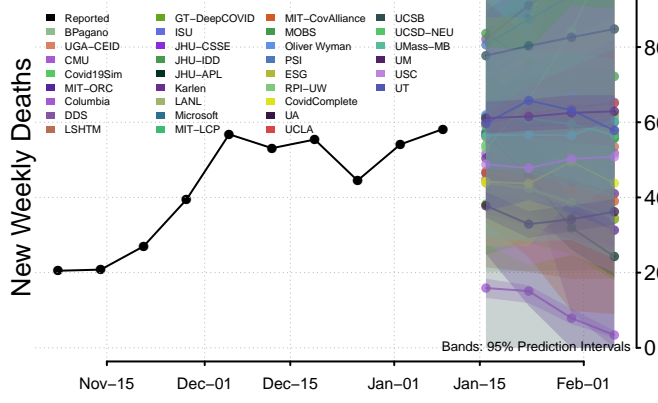


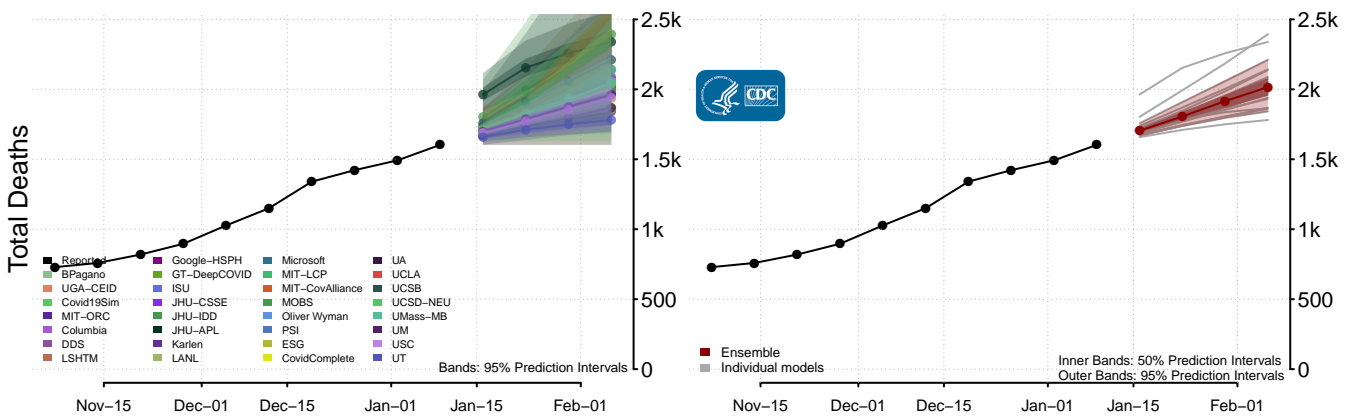
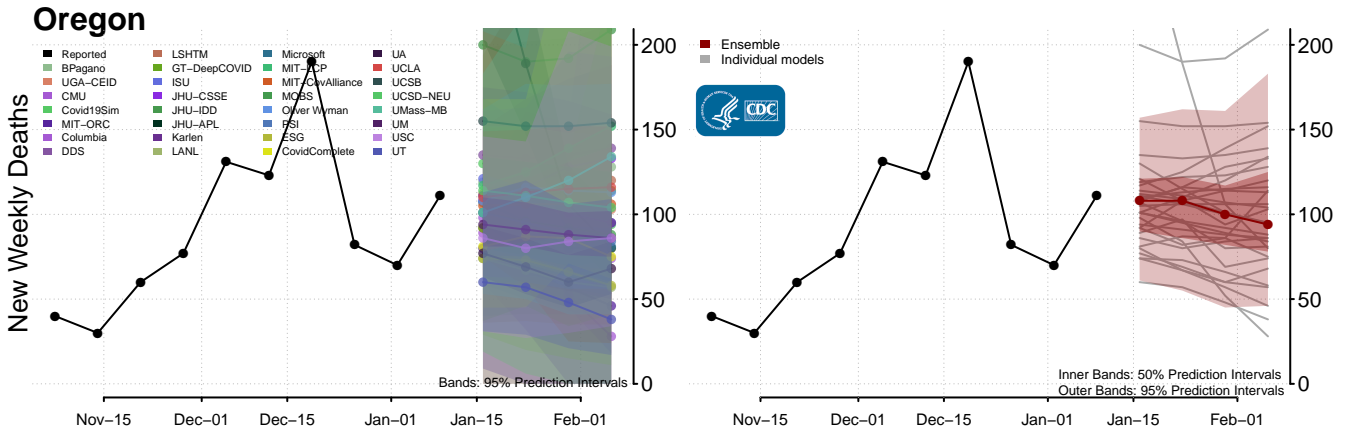
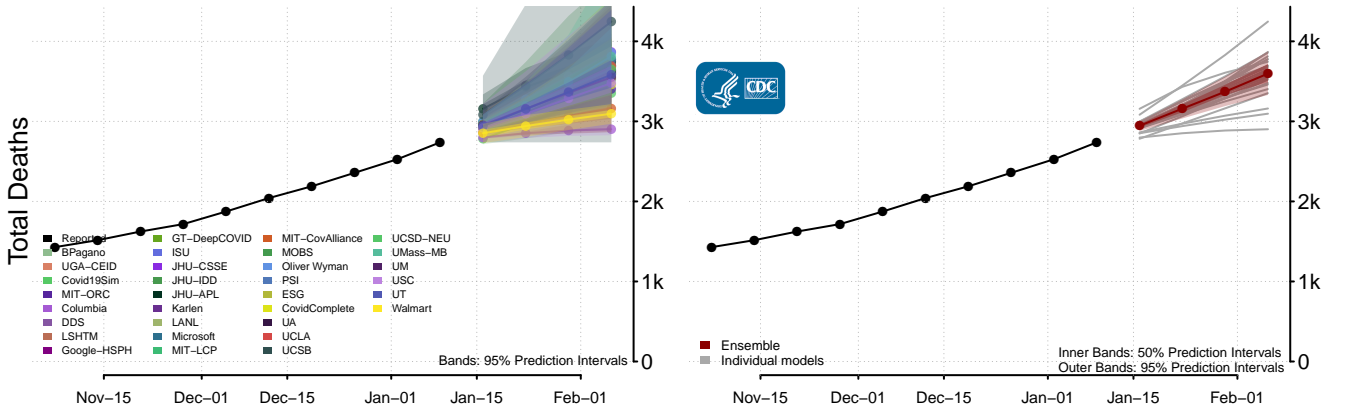
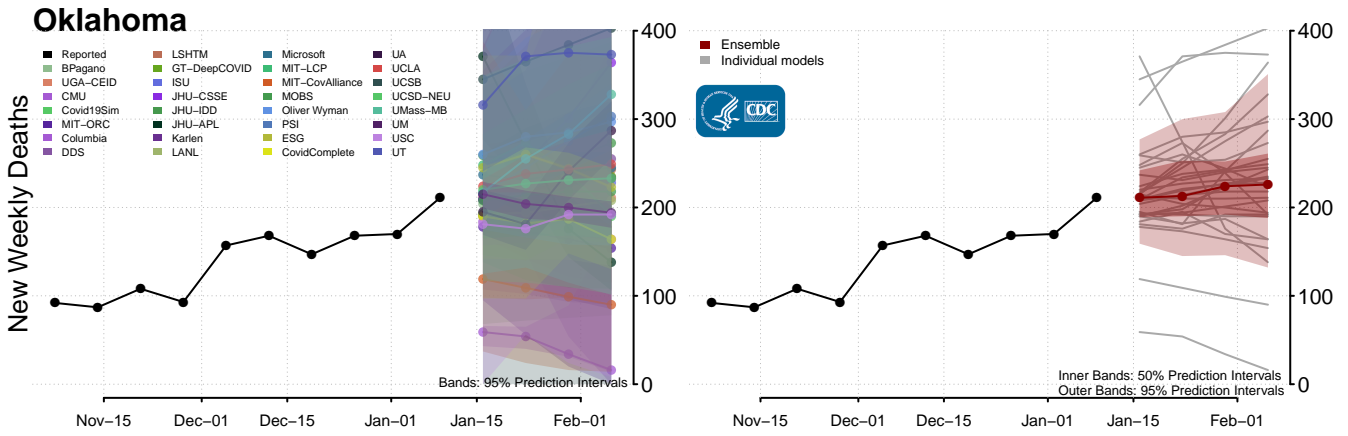
\*New weekly deaths may decrease in this location over the next four weeks. For these locations, the ensemble forecast indicates a probability of 0.75 or greater that fewer deaths will be reported in week four of the forecast than in the last reported week.

### Northern Mariana Islands

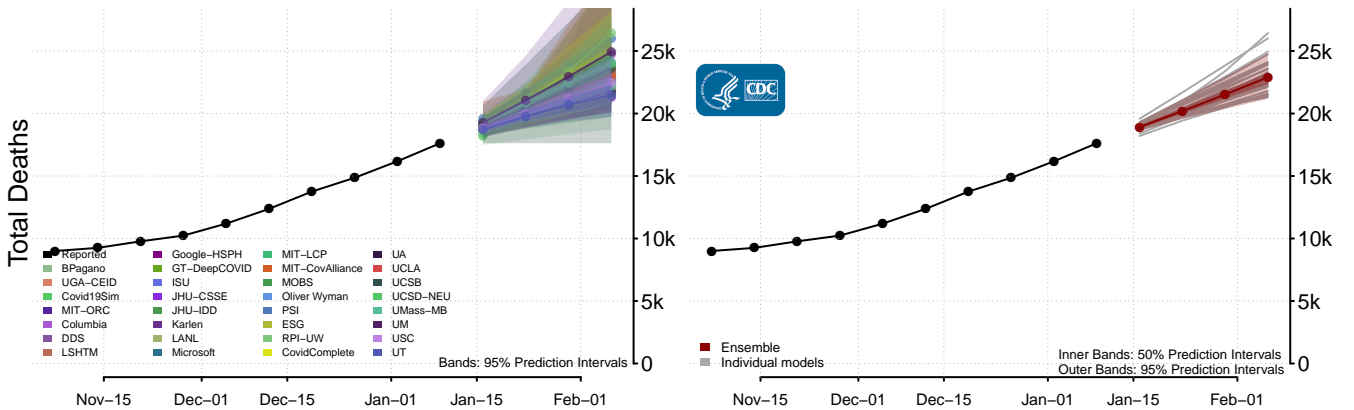
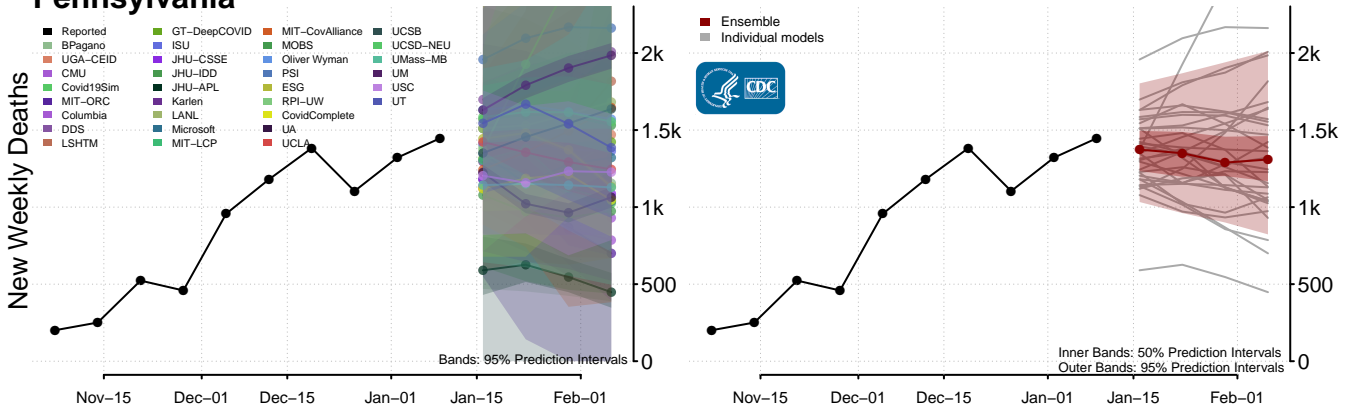


### Ohio

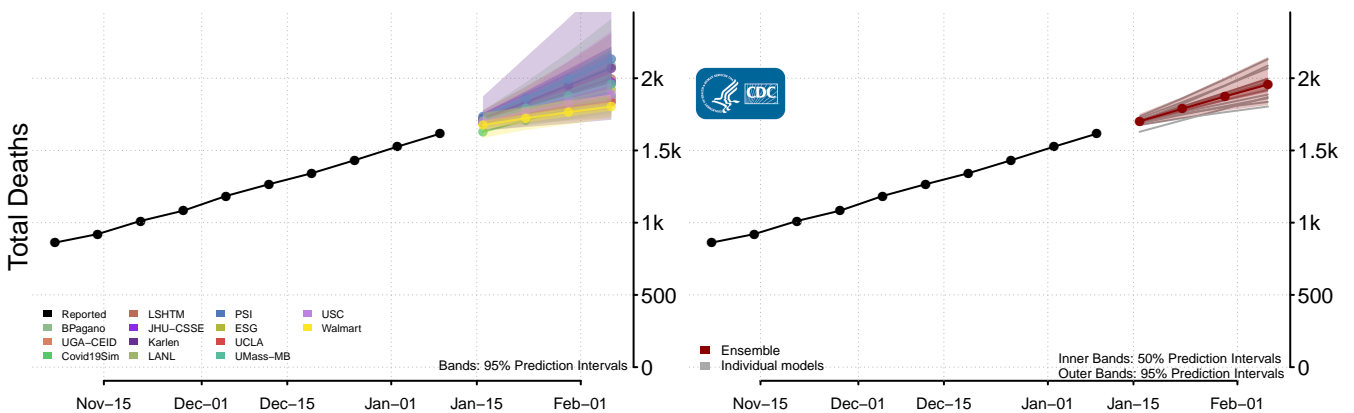
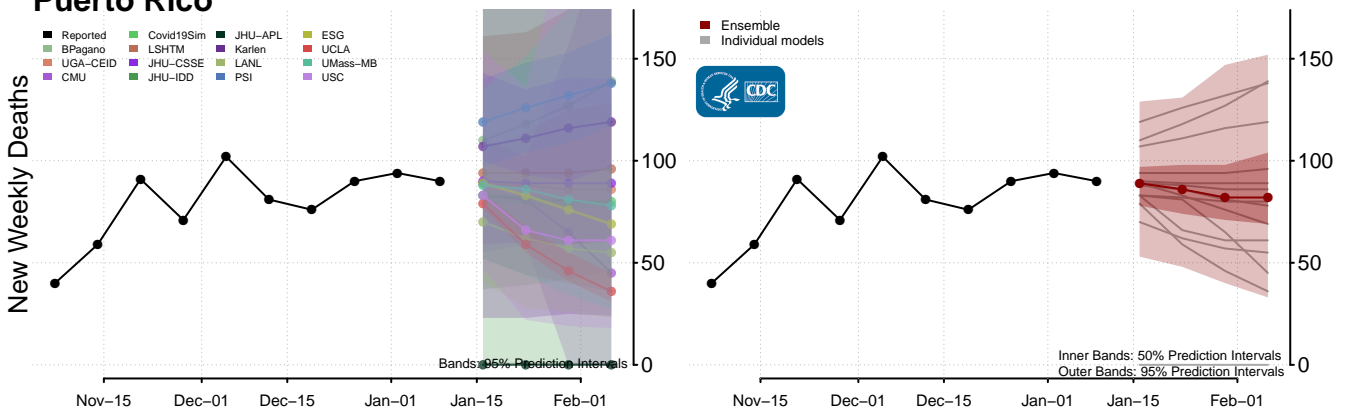




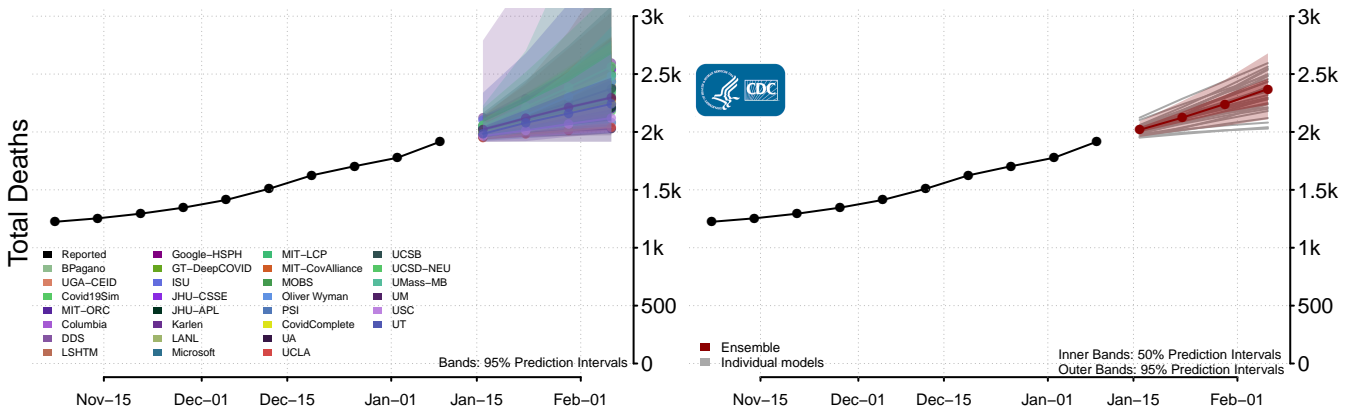
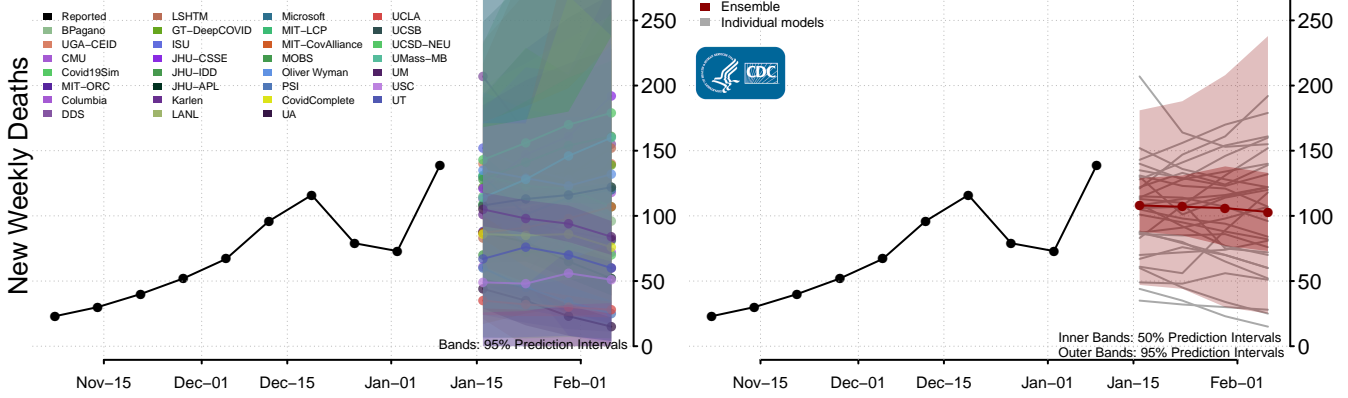
### Pennsylvania



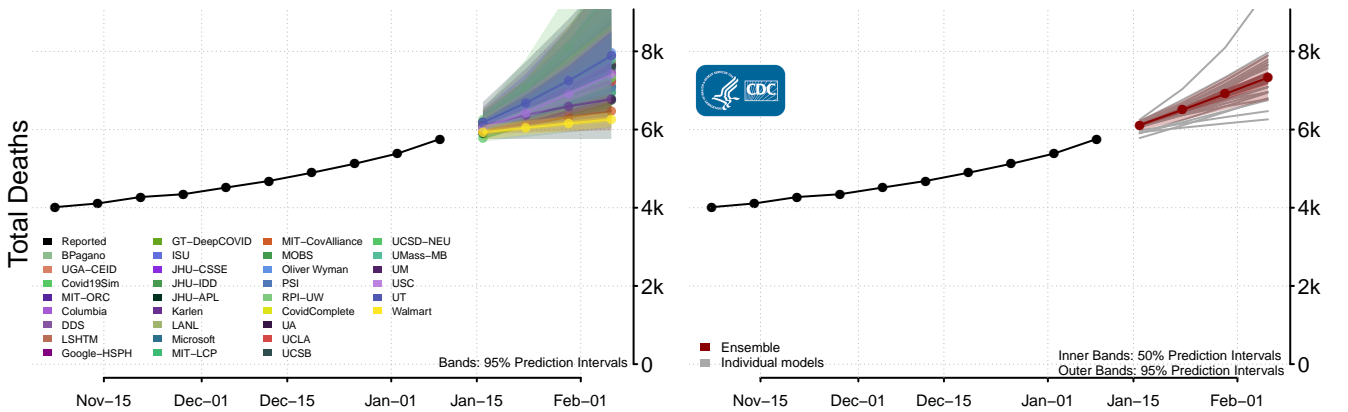
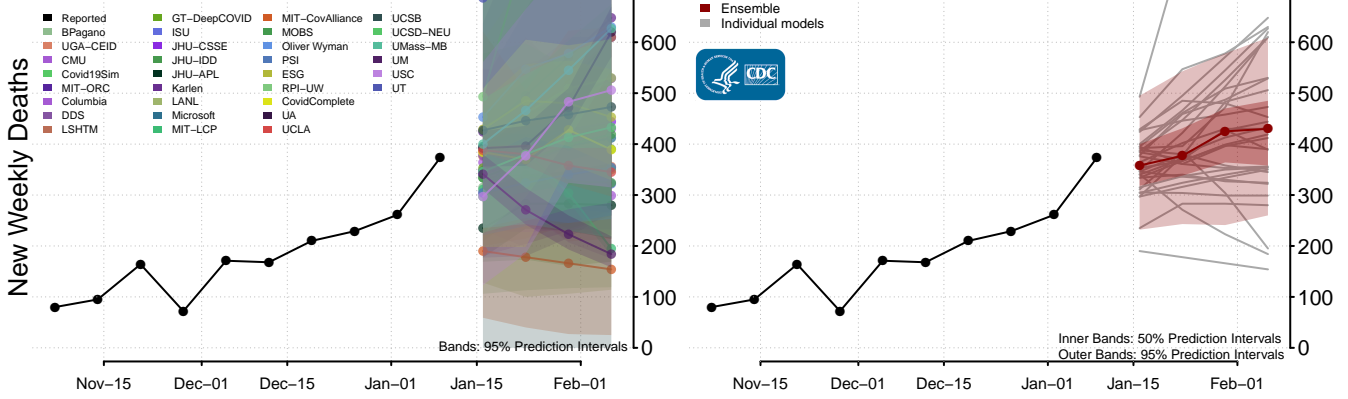
### Puerto Rico

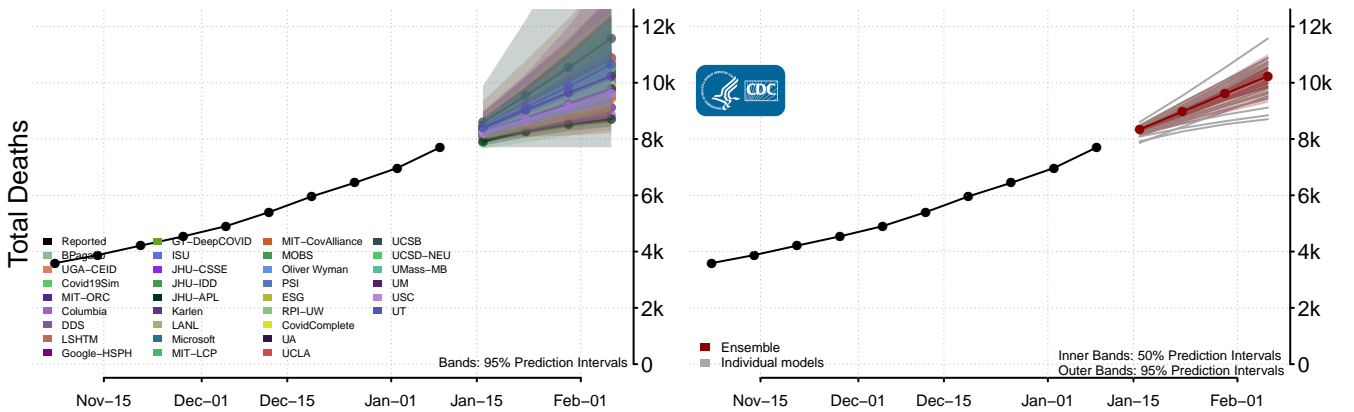
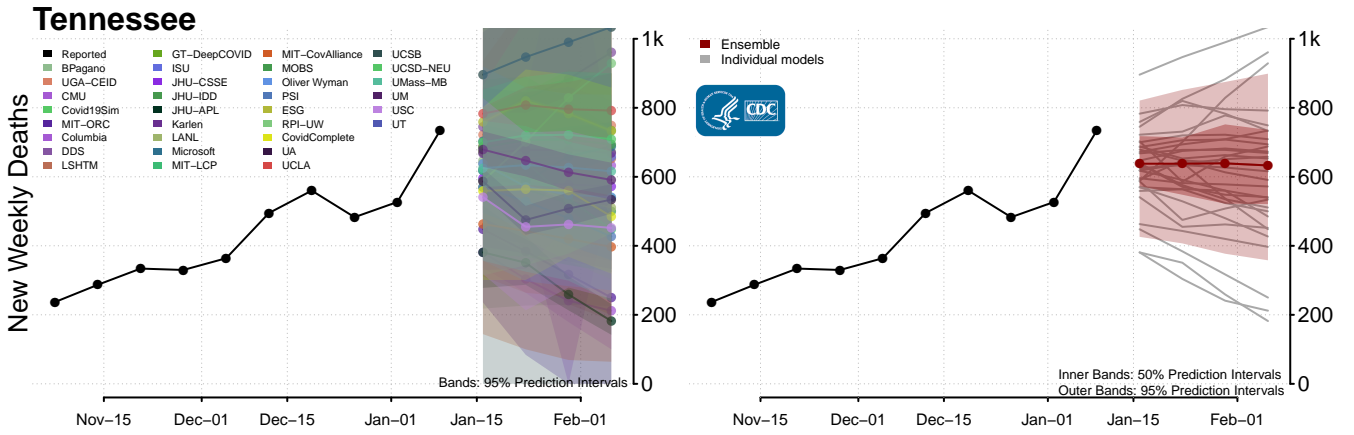
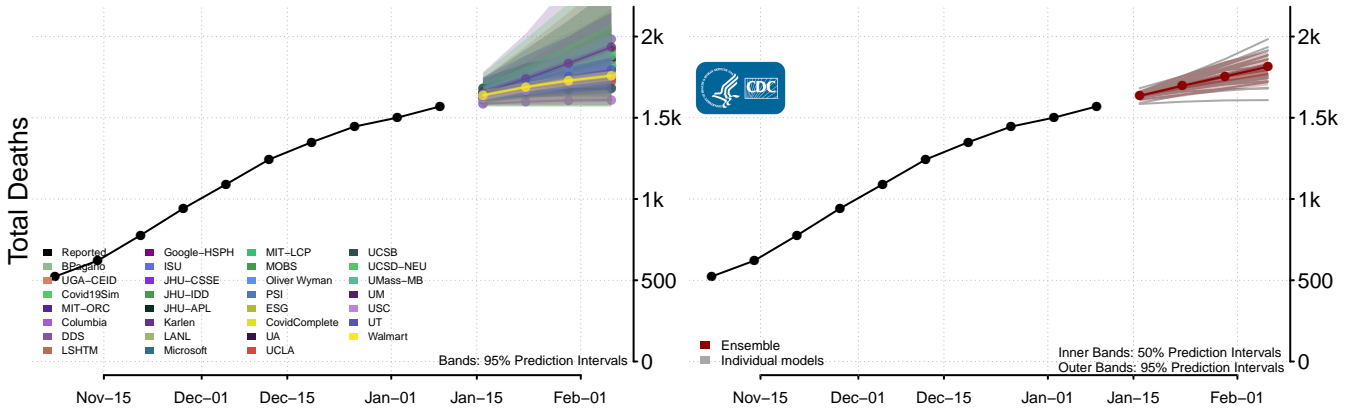
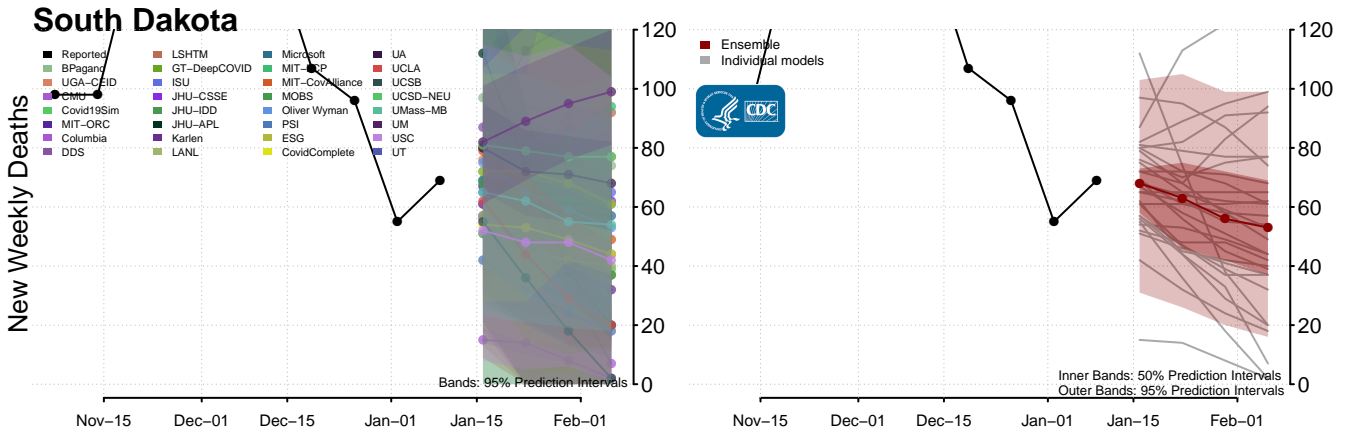


### Rhode Island

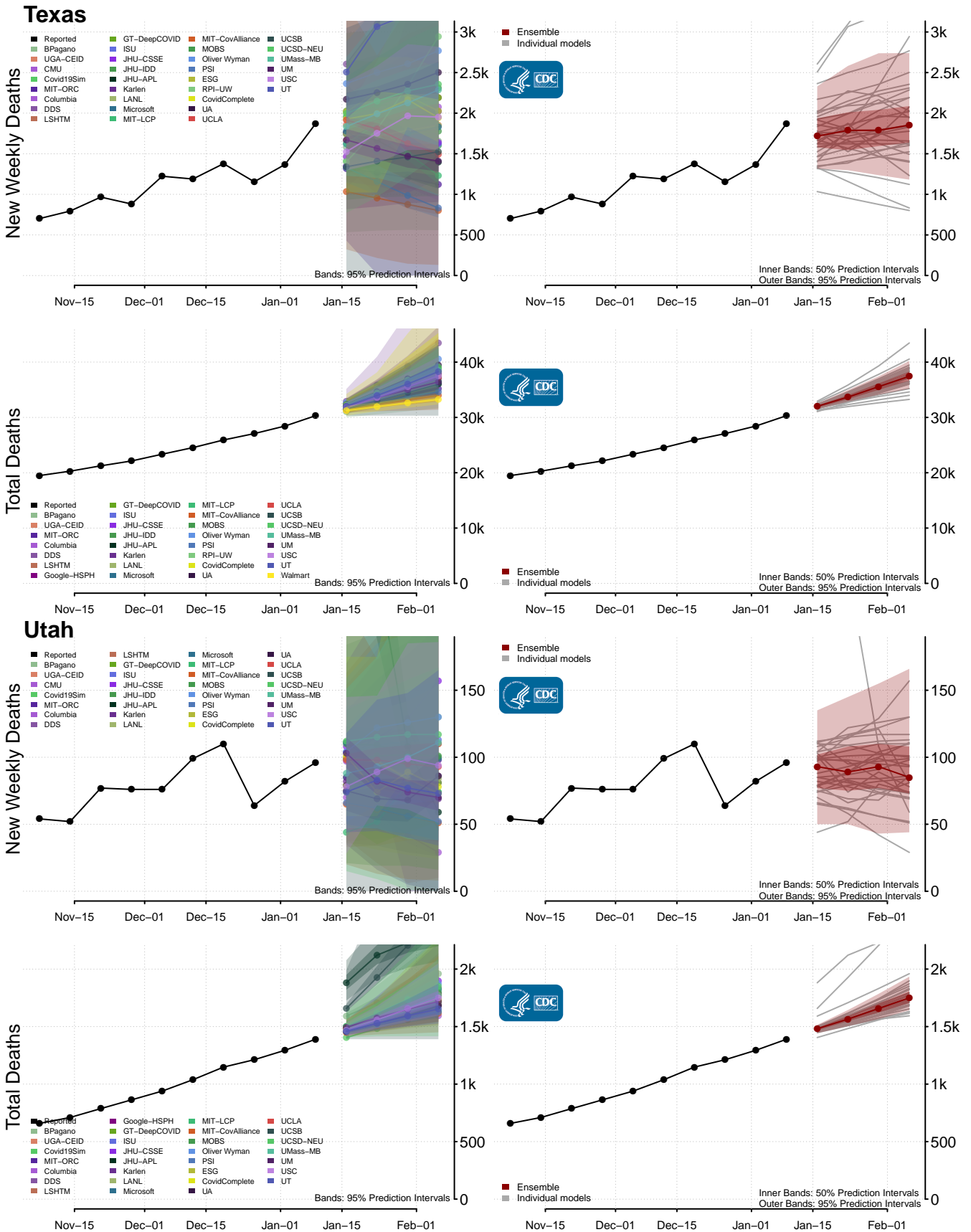


### South Carolina

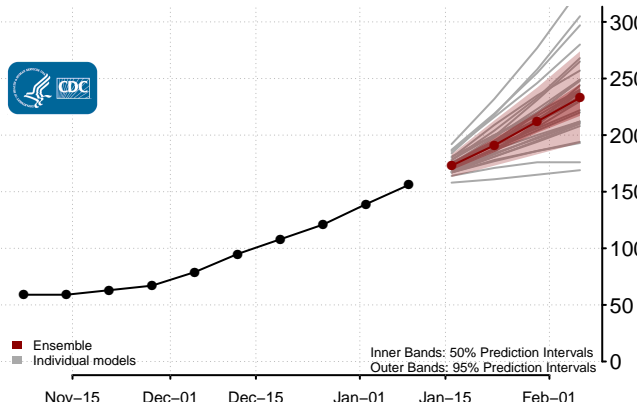
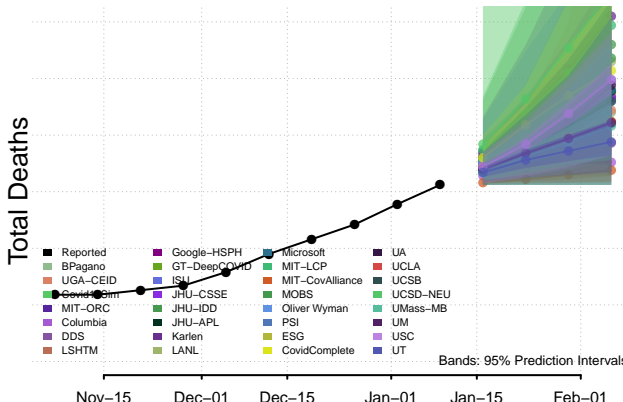
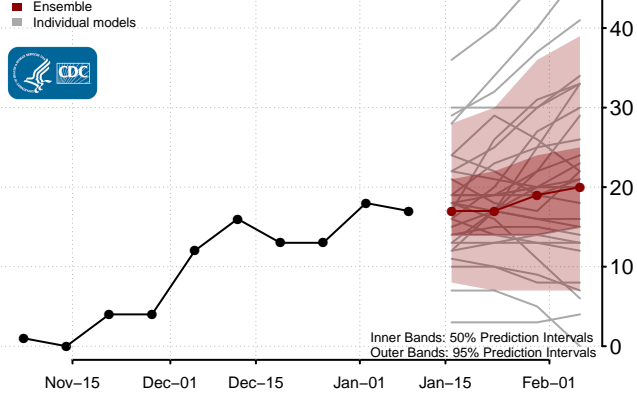
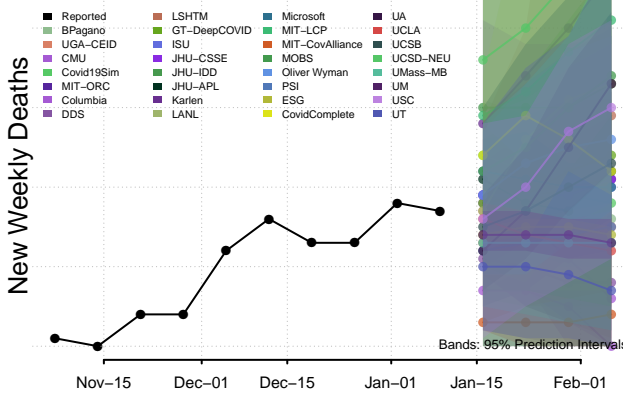




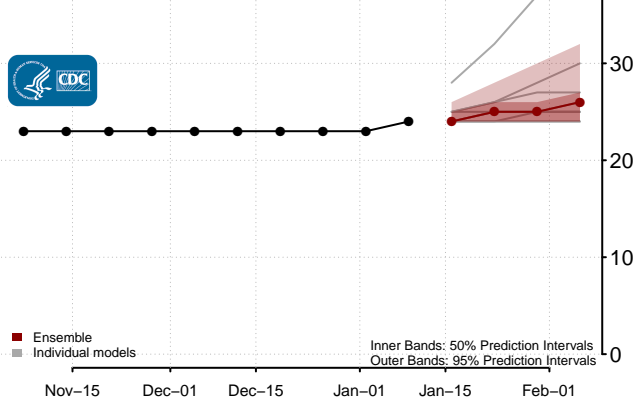
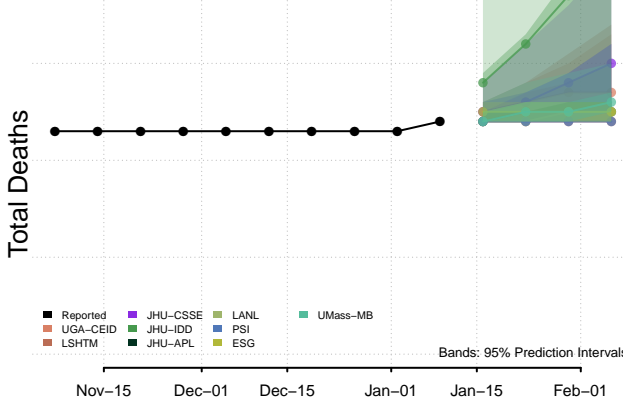
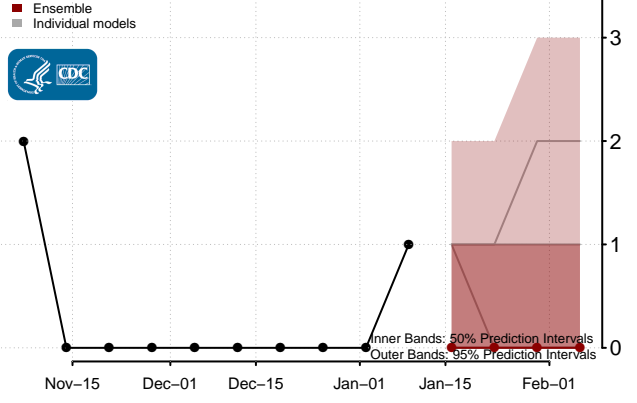
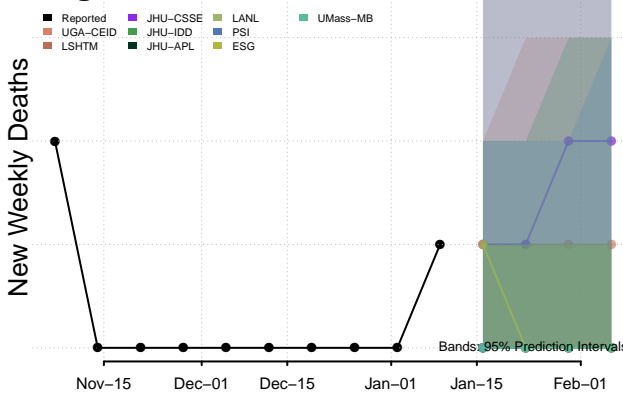


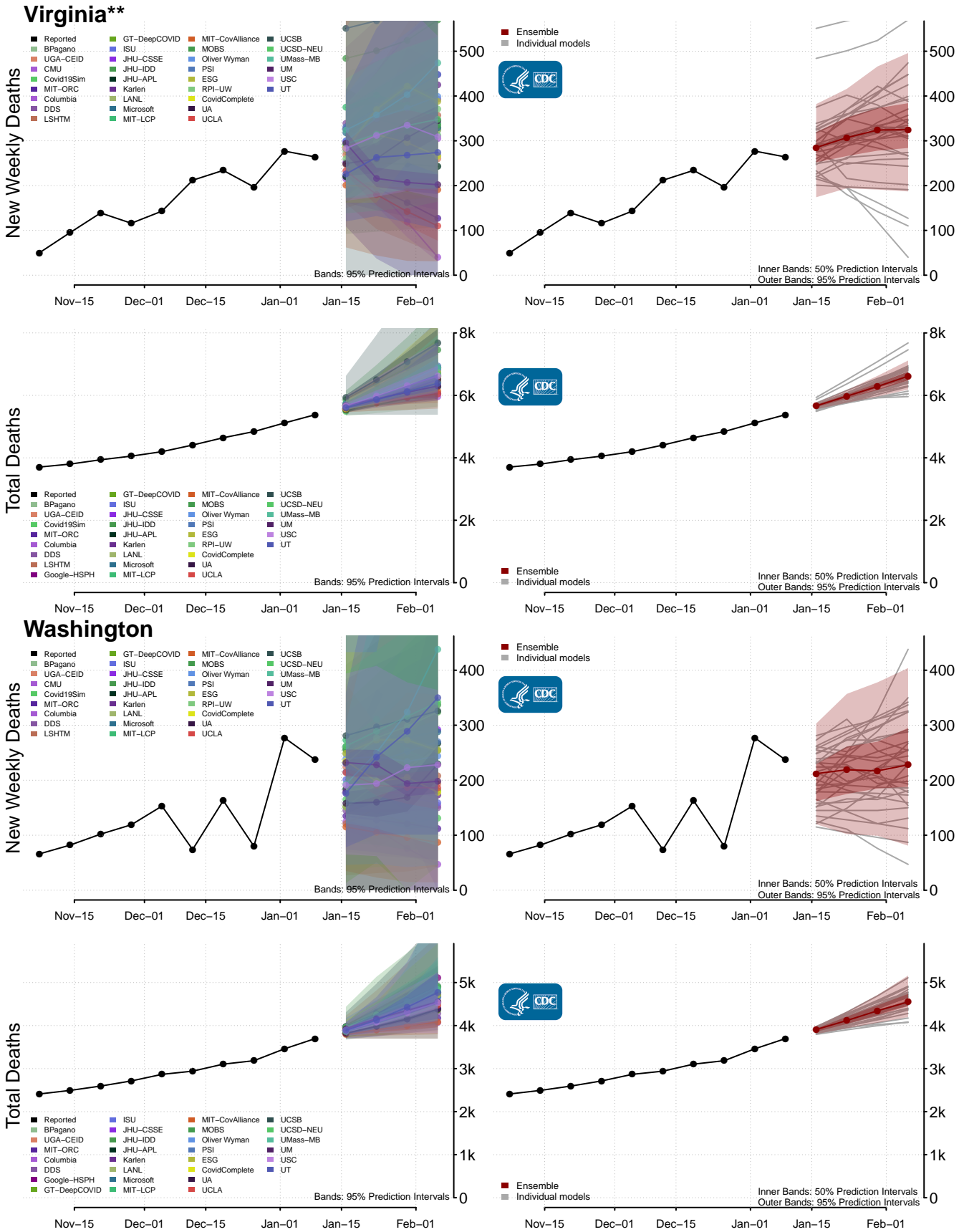


### Vermont



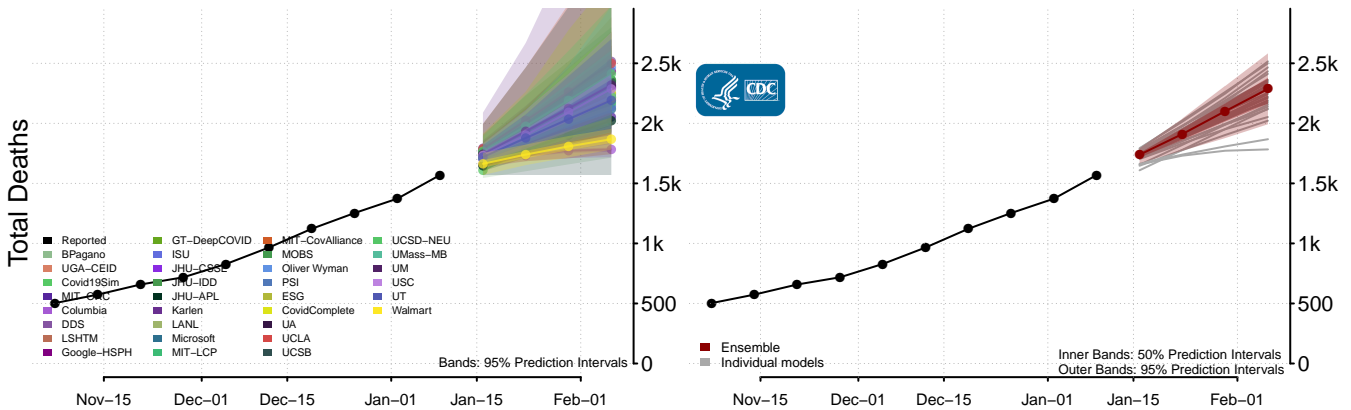
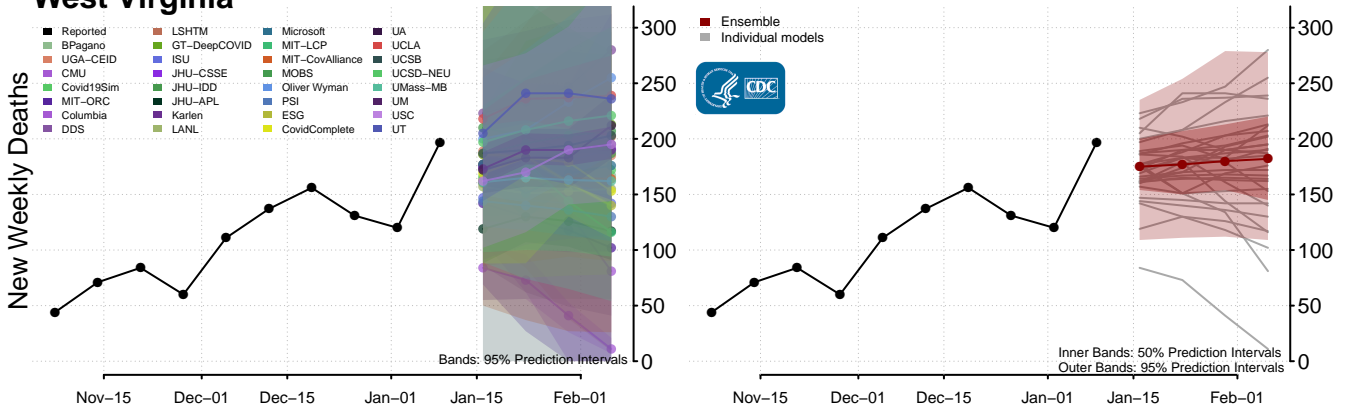
### Virgin Islands





\*\*New weekly deaths may increase in this location over the next four weeks. For these locations, the ensemble forecast indicates a probability of 0.75 or greater that more deaths will be reported in week four of the forecast than in the last reported week.

### West Virginia



### Wisconsin

