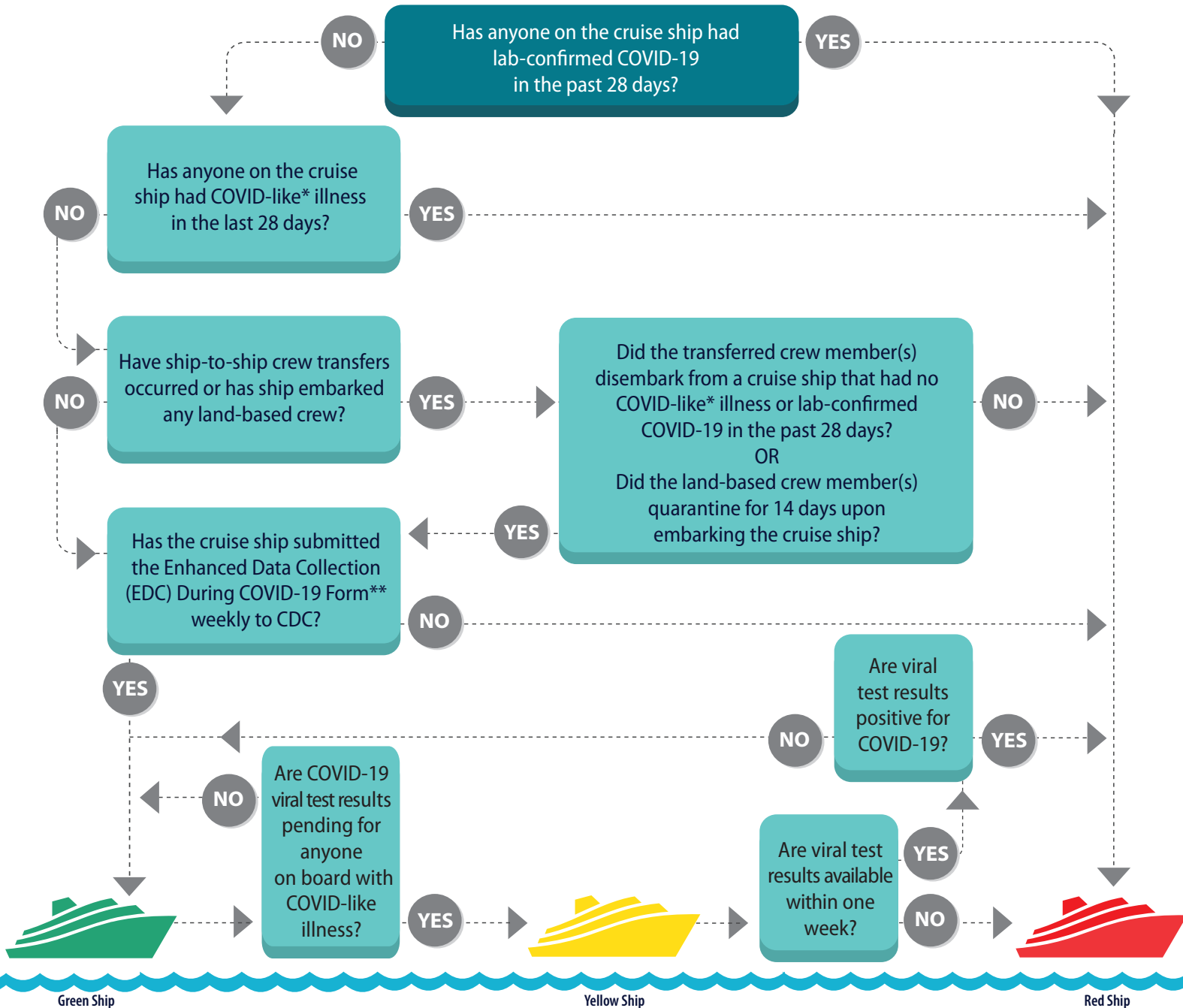


CRUISE SHIP STATUS GUIDE

Learn more: <https://www.cdc.gov/quarantine/cruise/management/technical-instructions-for-cruise-ships.html>



*COVID-like illness means a person has symptoms of COVID-19, but has not been tested for the virus yet.

View the symptom list at: www.cdc.gov/coronavirus/2019-ncov/symptoms-testing/symptoms.html.

**CDC requires weekly submission of the EDC Form during suspended cruise ship operations. CDC uses the EDC Form to conduct surveillance for COVID-19 among crew who remain on board cruise ships using cumulative reports of acute respiratory illness (ARI), influenza-like illness (ILI), and pneumonia, and other clinical indicators.



cdc.gov/coronavirus