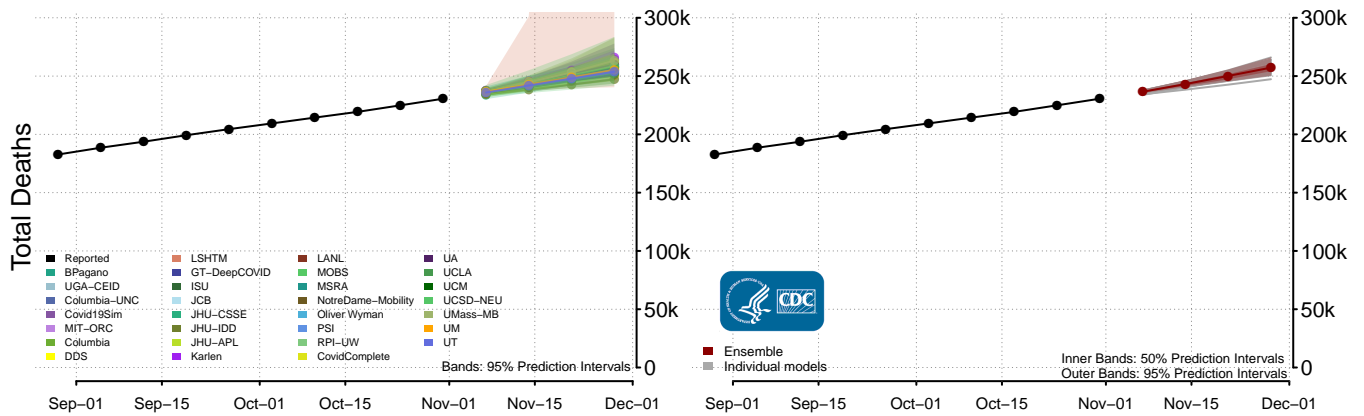
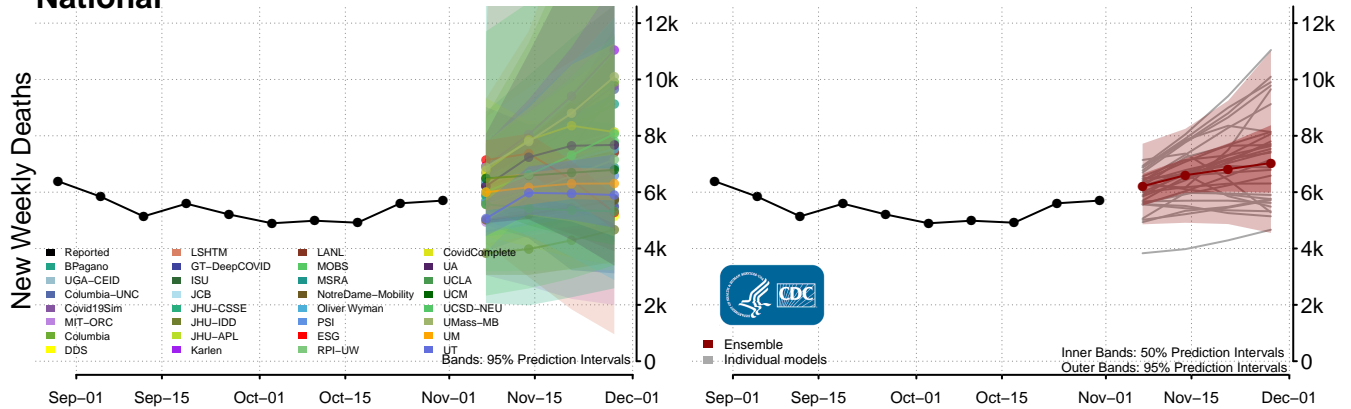
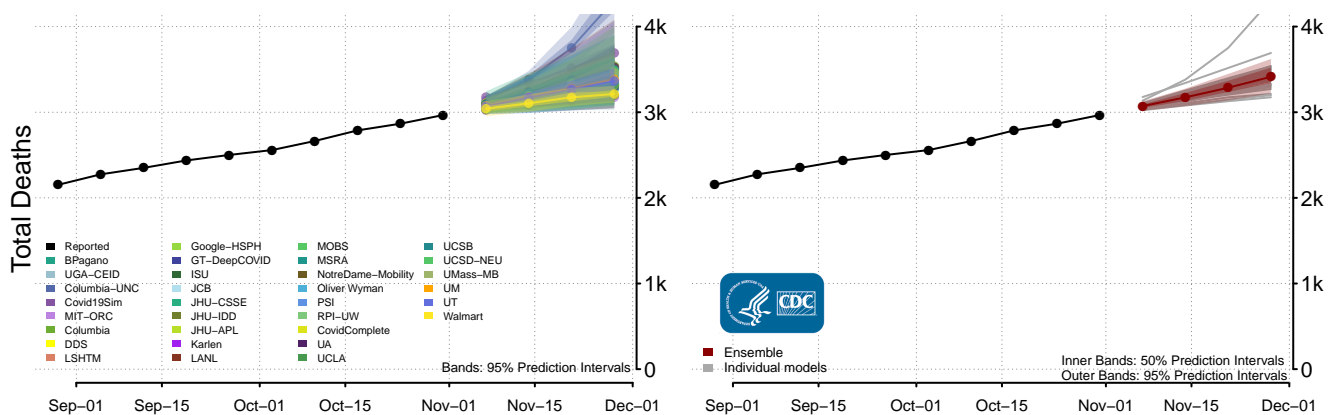
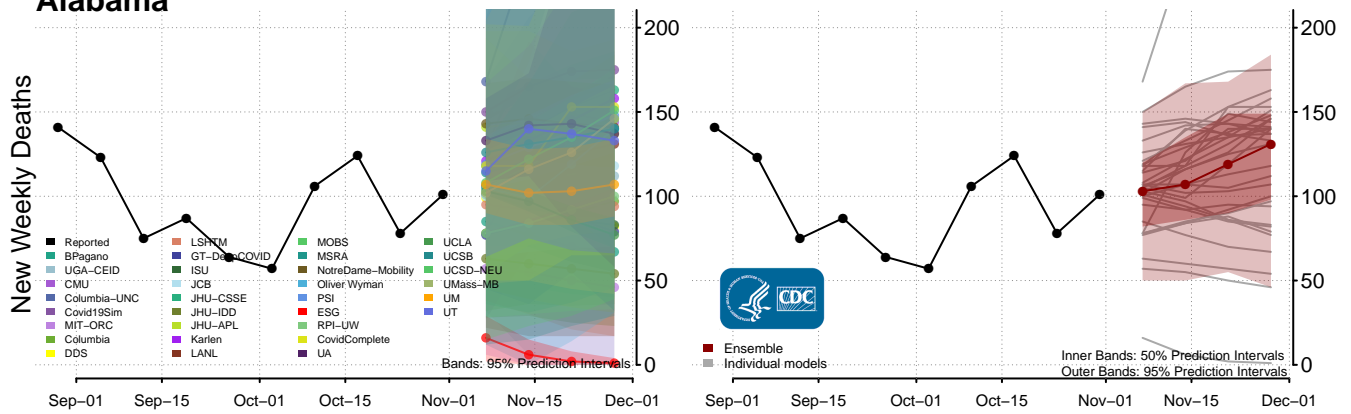


### National\*\*

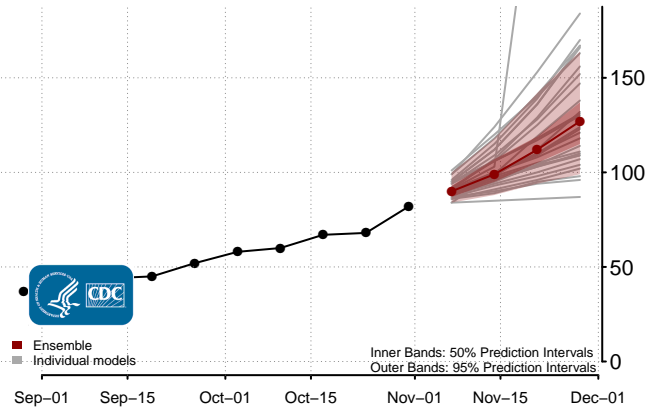
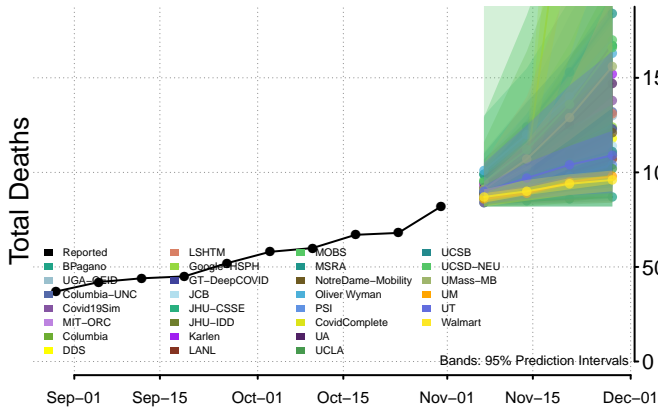
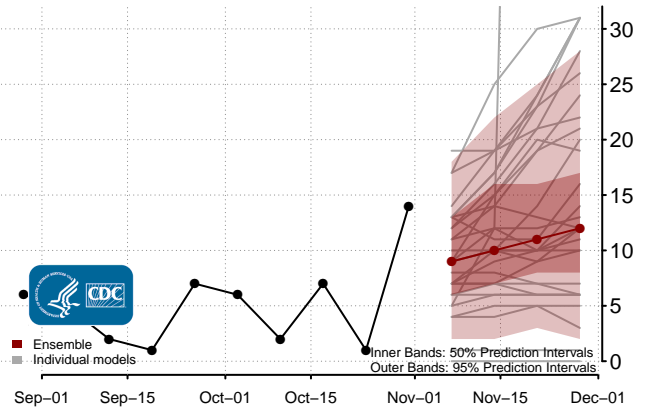
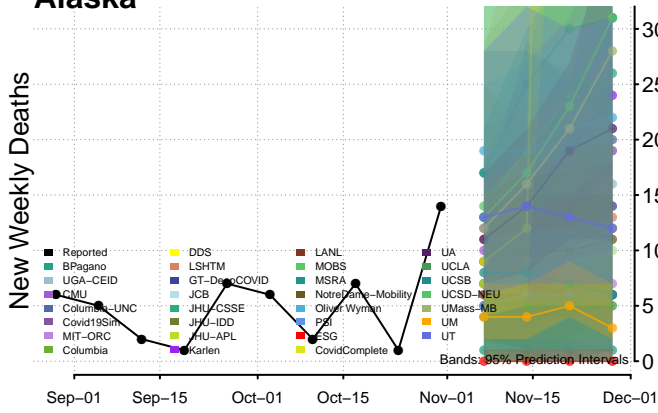


### Alabama

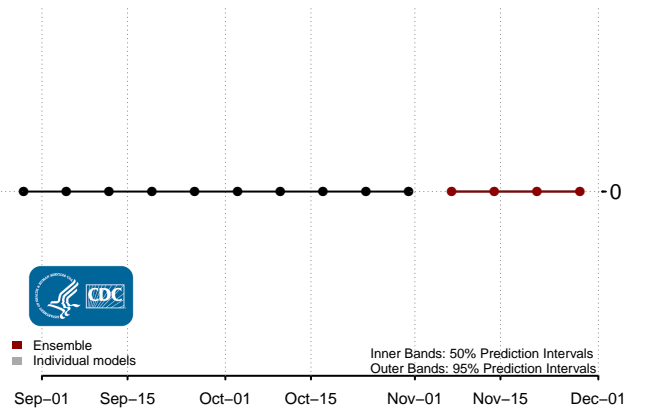
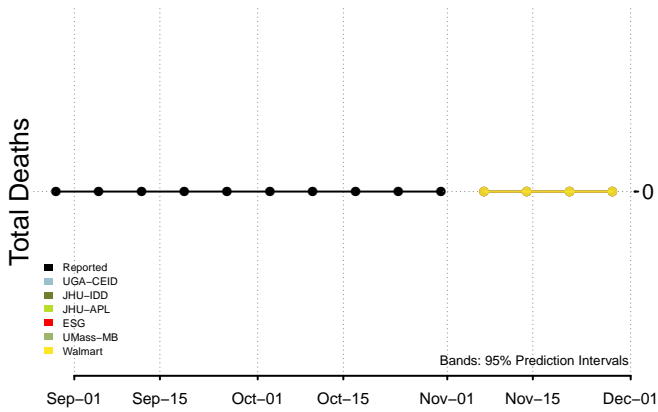
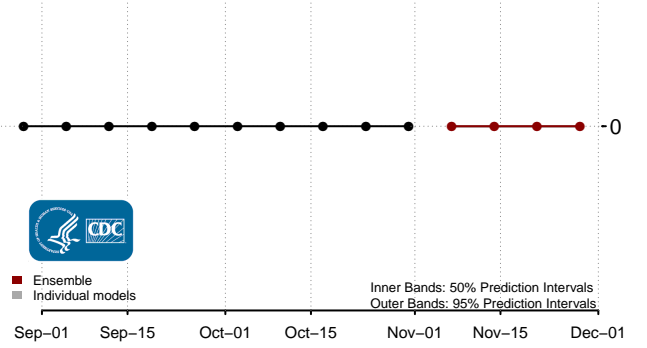
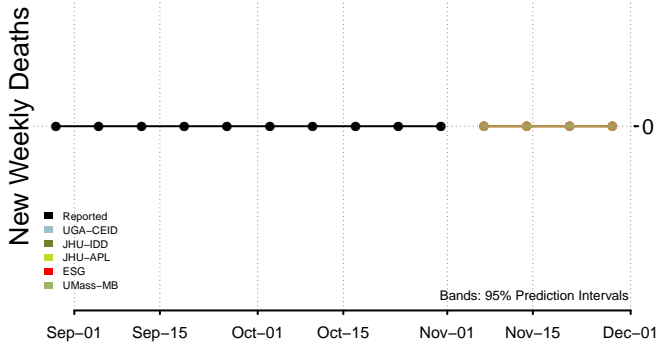


\*\*New weekly deaths may increase in this location over the next four weeks. For these locations, the ensemble forecast indicates a probability of 0.75 or greater that more deaths will be reported in week four of the forecast than in the last reported week.

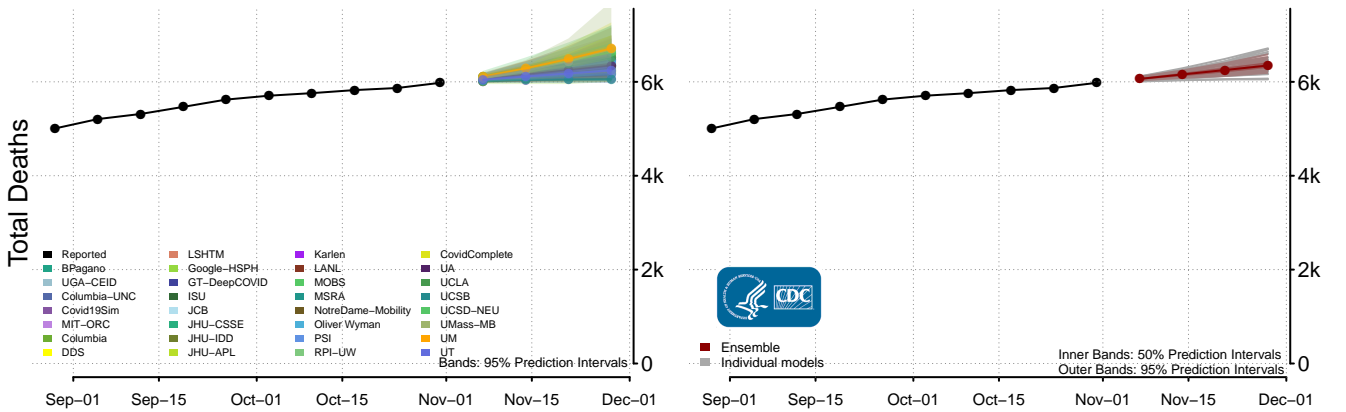
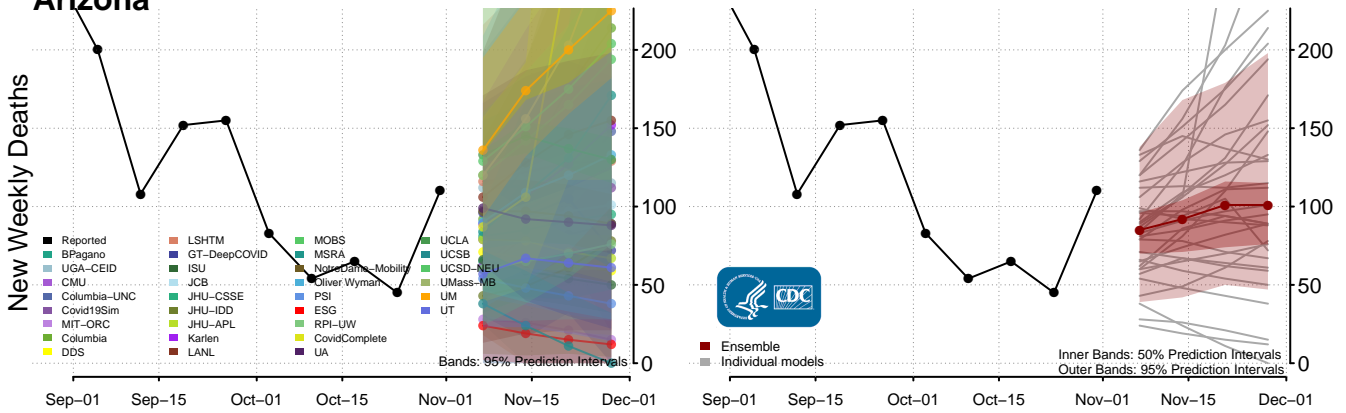
### Alaska



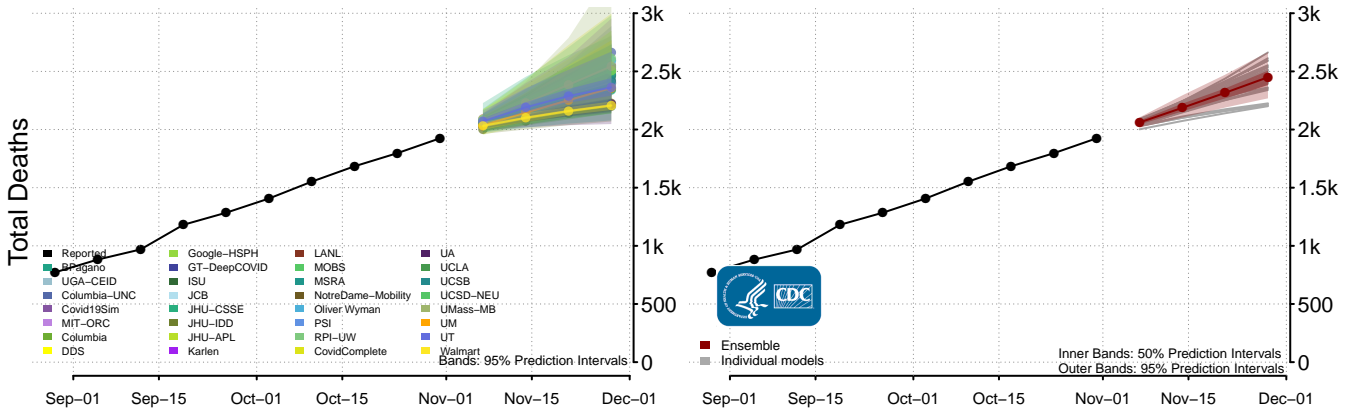
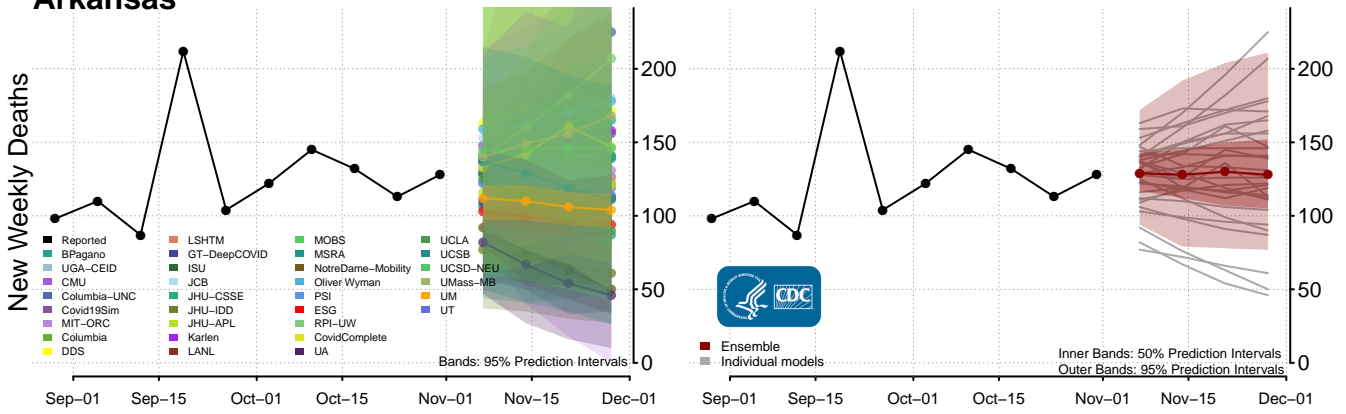
### American Samoa

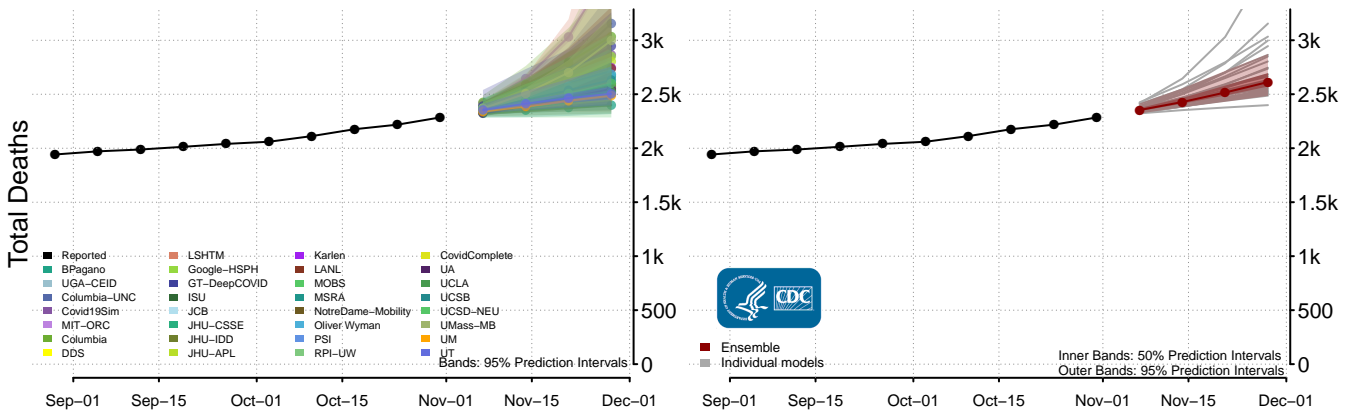
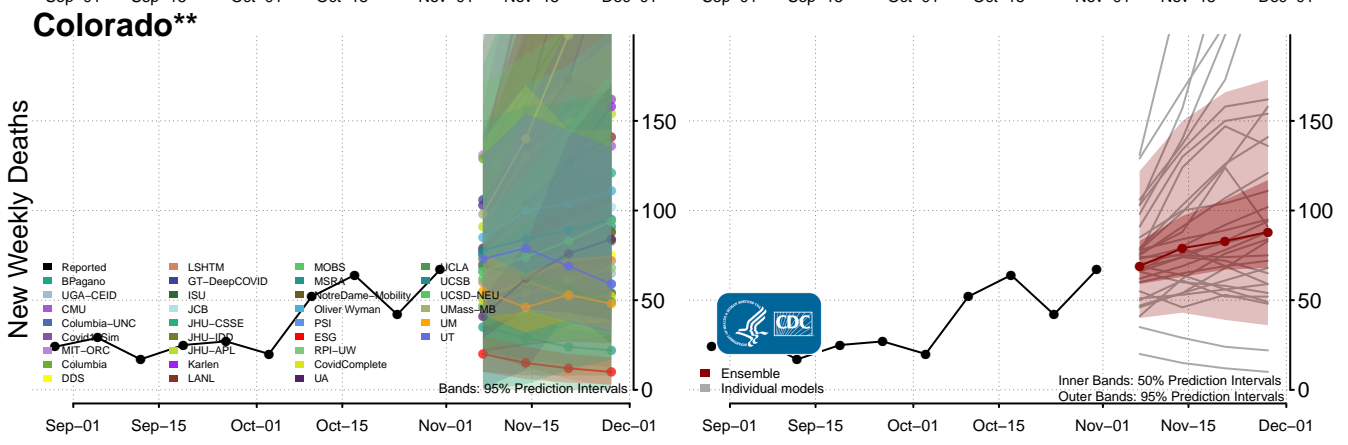
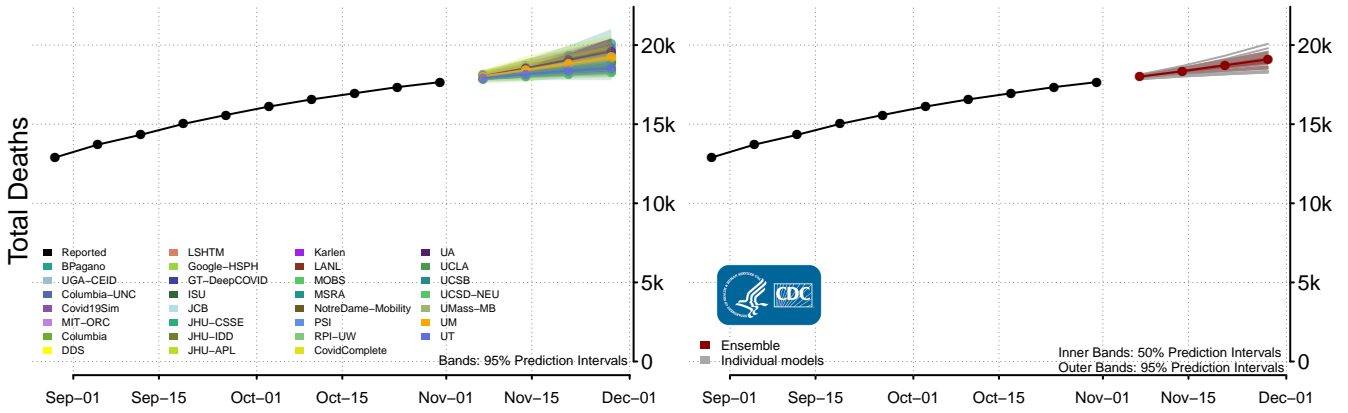
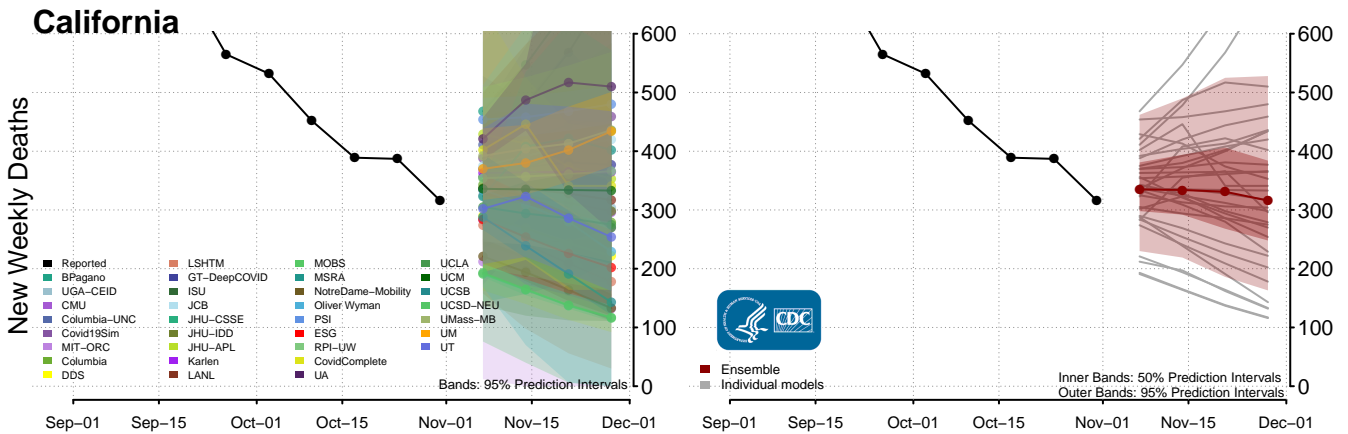


### Arizona



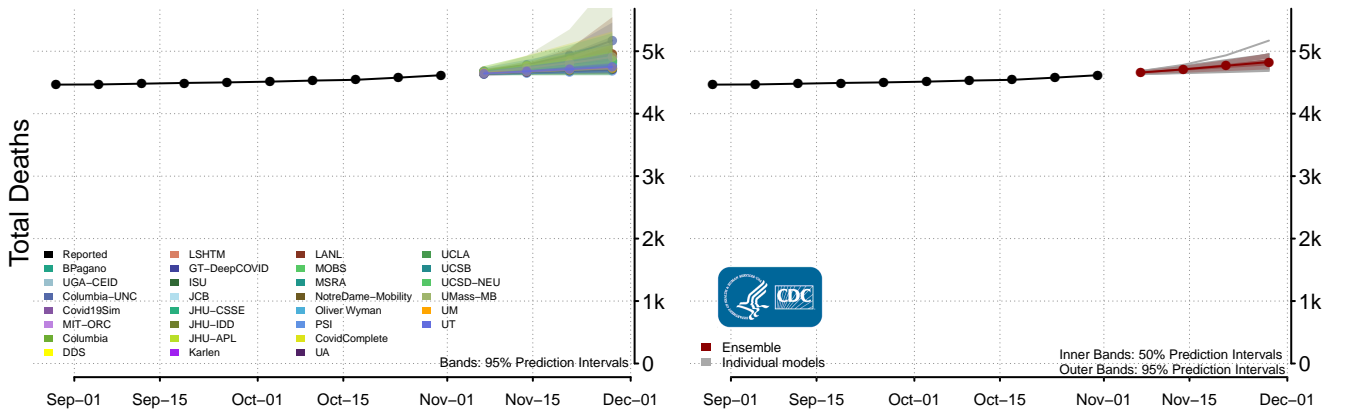
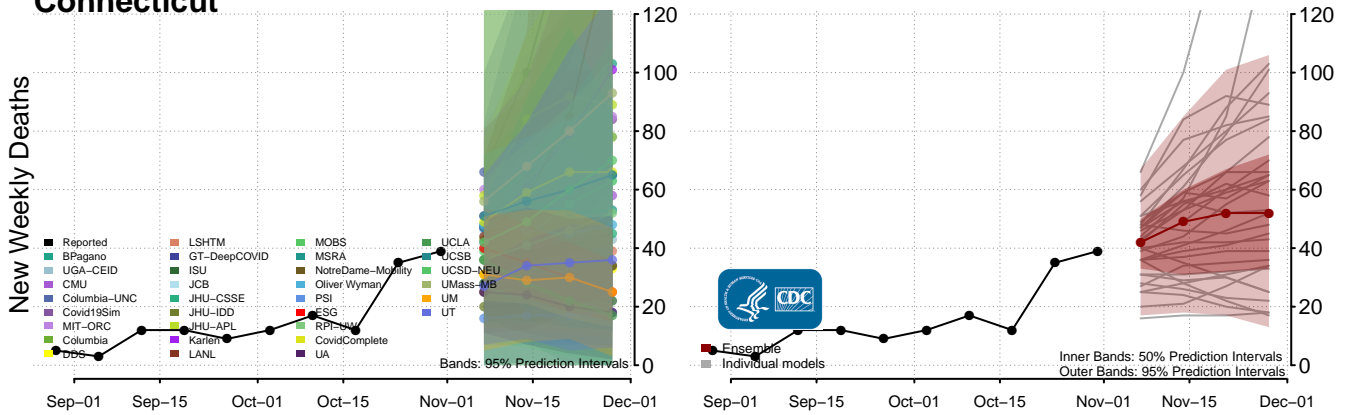
### Arkansas



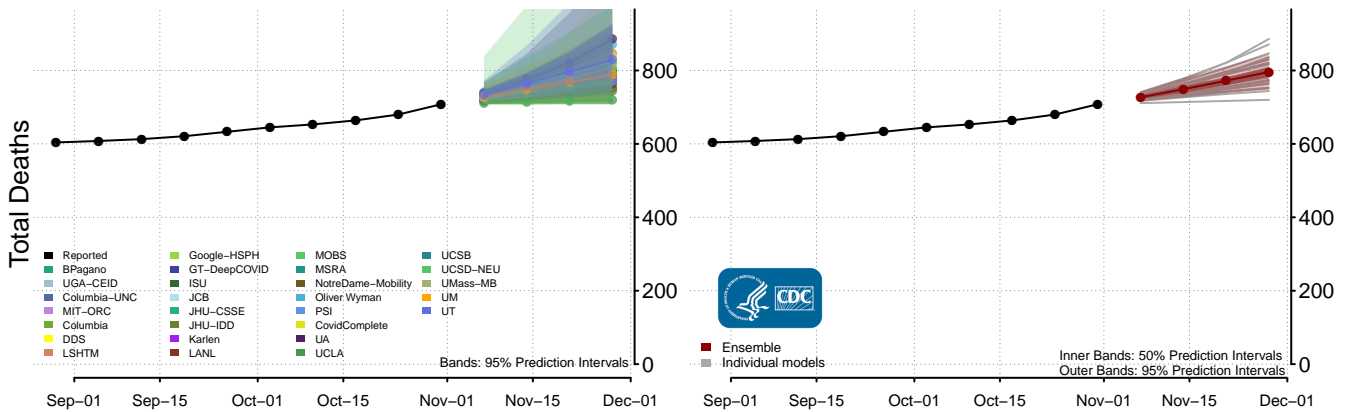
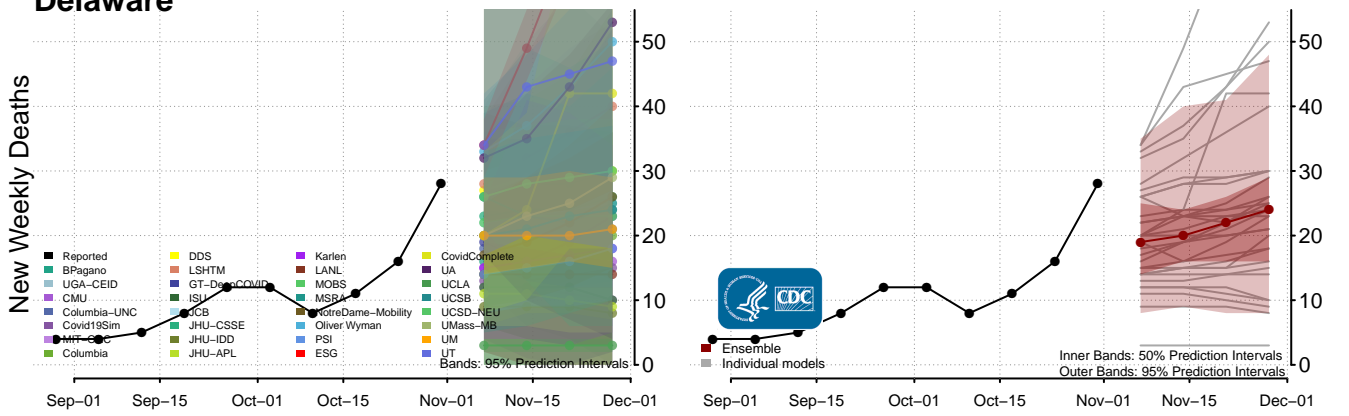


\*\*New weekly deaths may increase in this location over the next four weeks. For these locations, the ensemble forecast indicates a probability of 0.75 or greater that more deaths will be reported in week four of the forecast than in the last reported week.

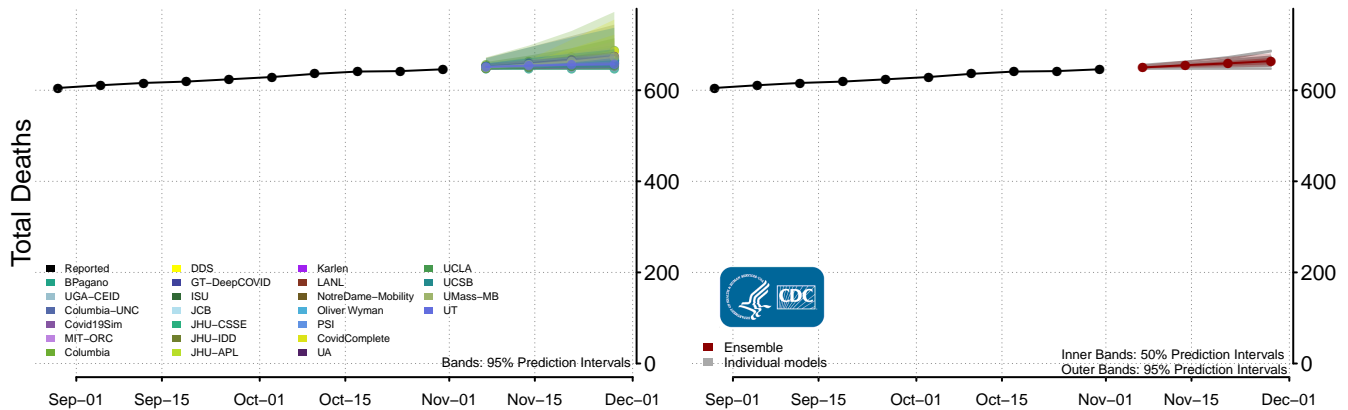
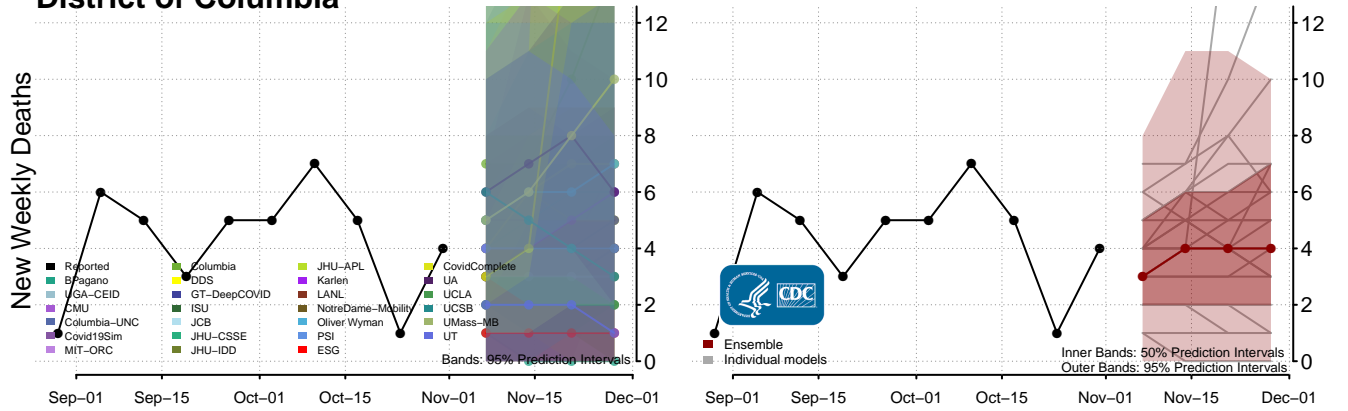
### Connecticut



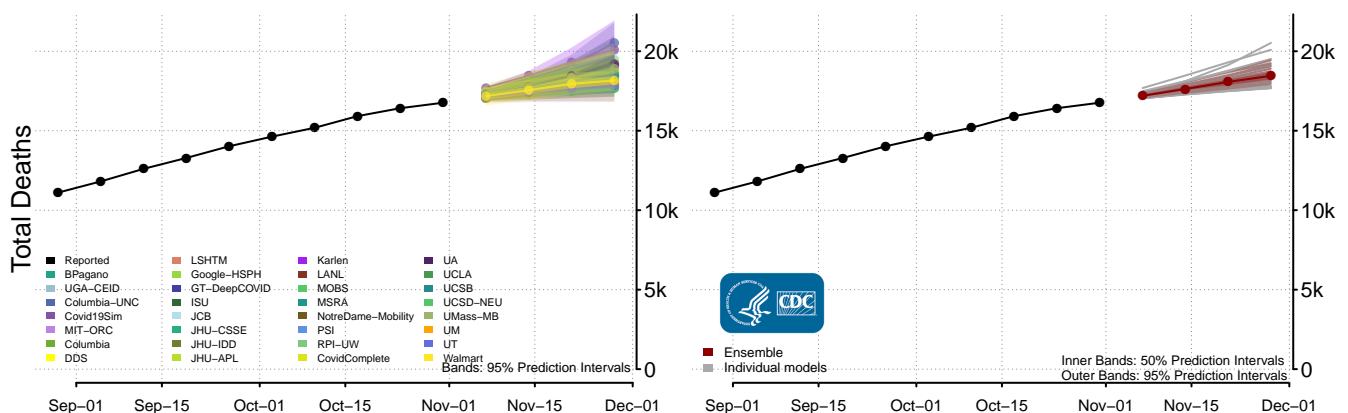
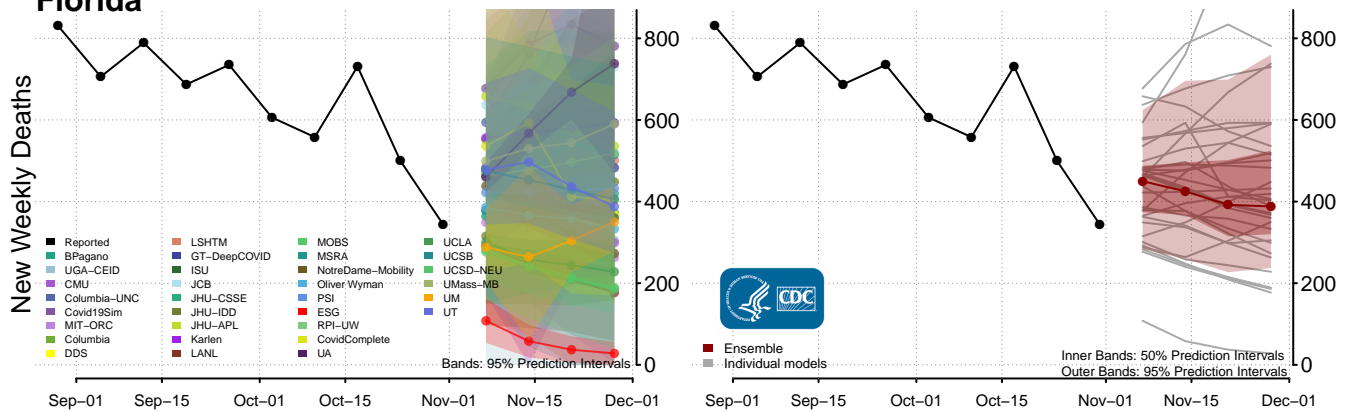
### Delaware



### District of Columbia

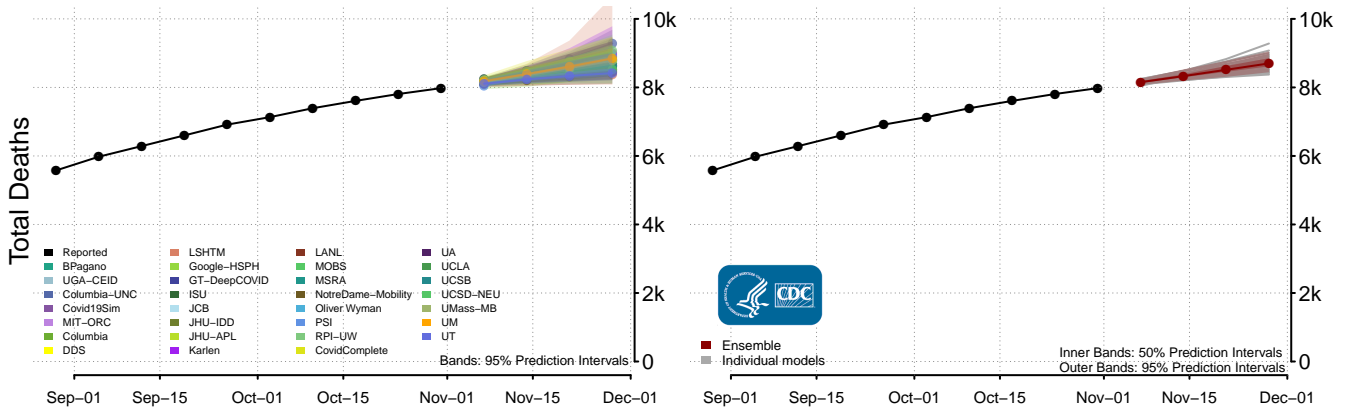
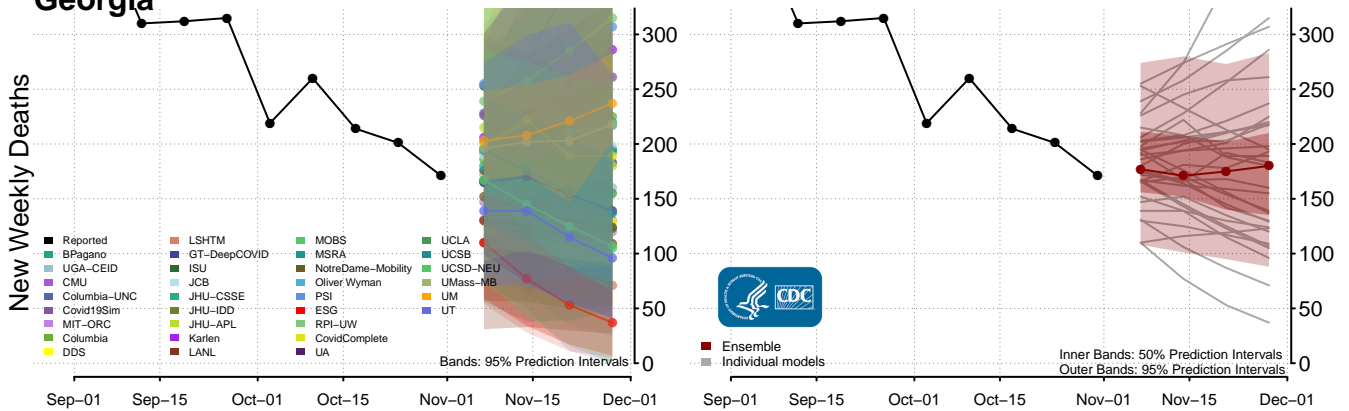


### Florida

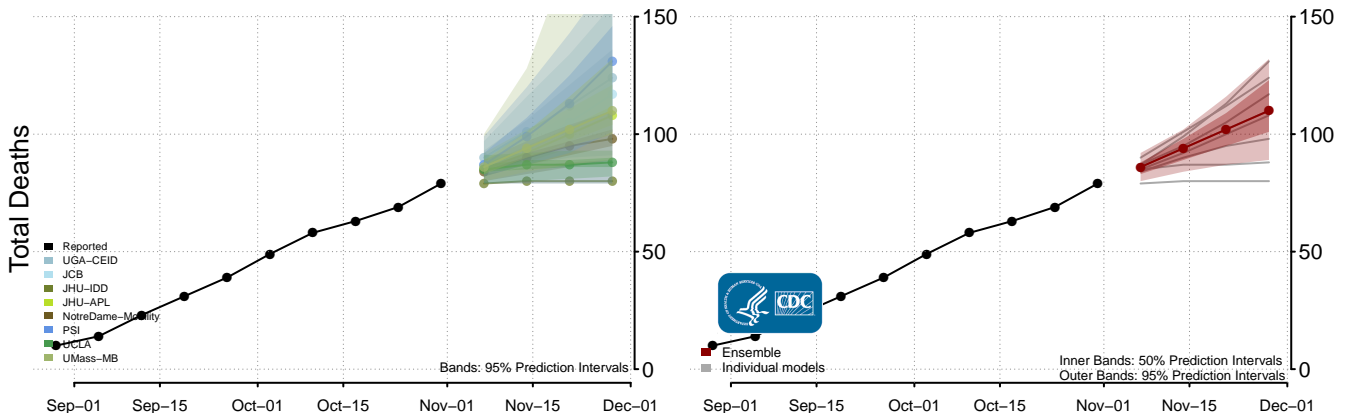
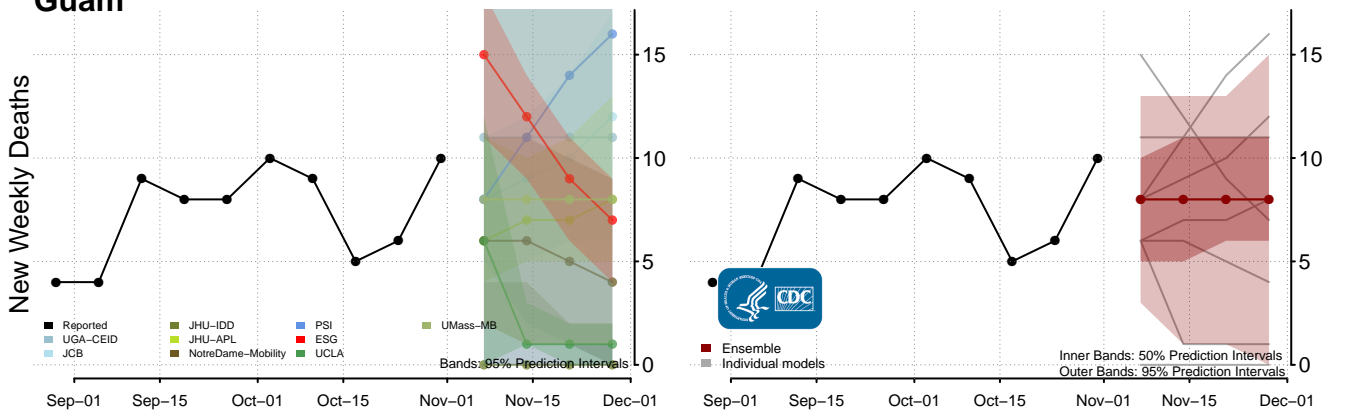




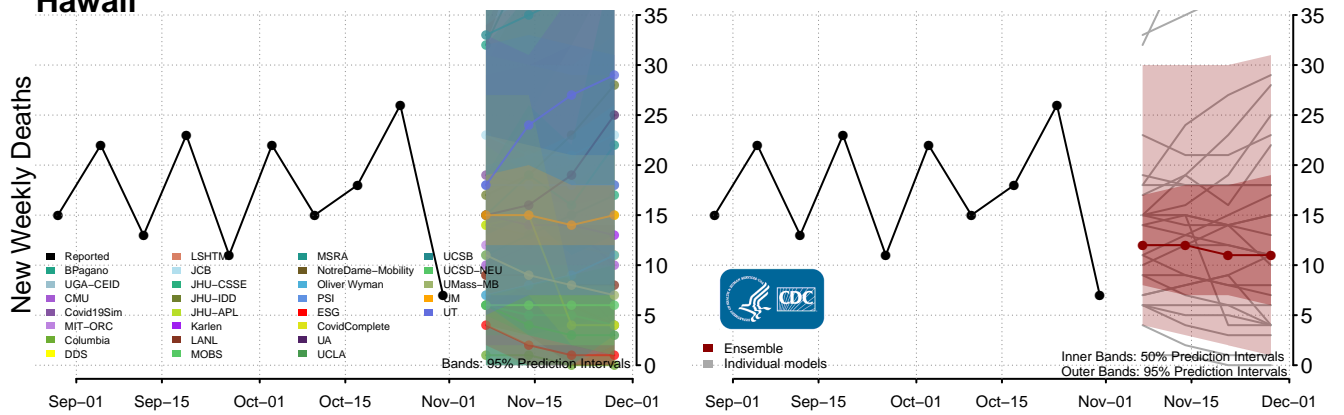
# Georgia



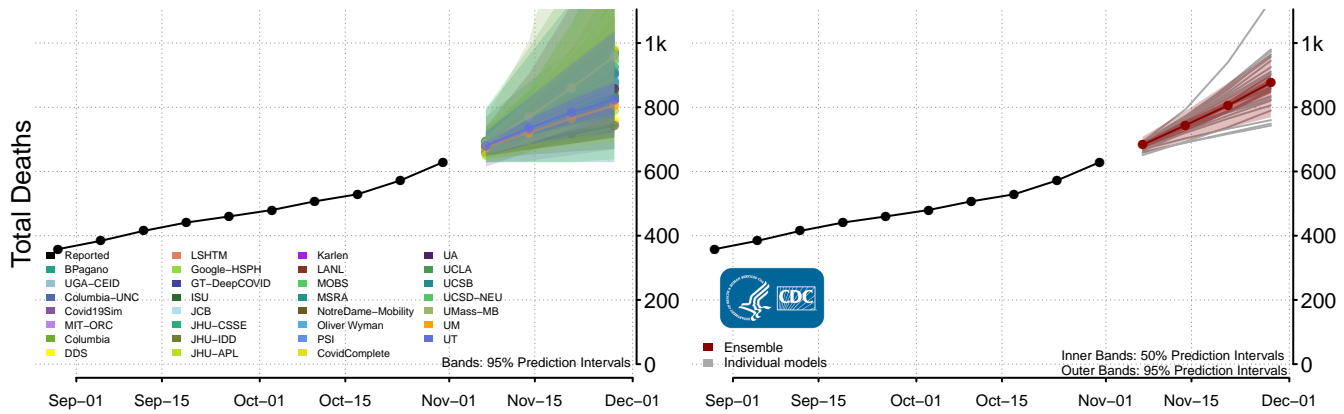
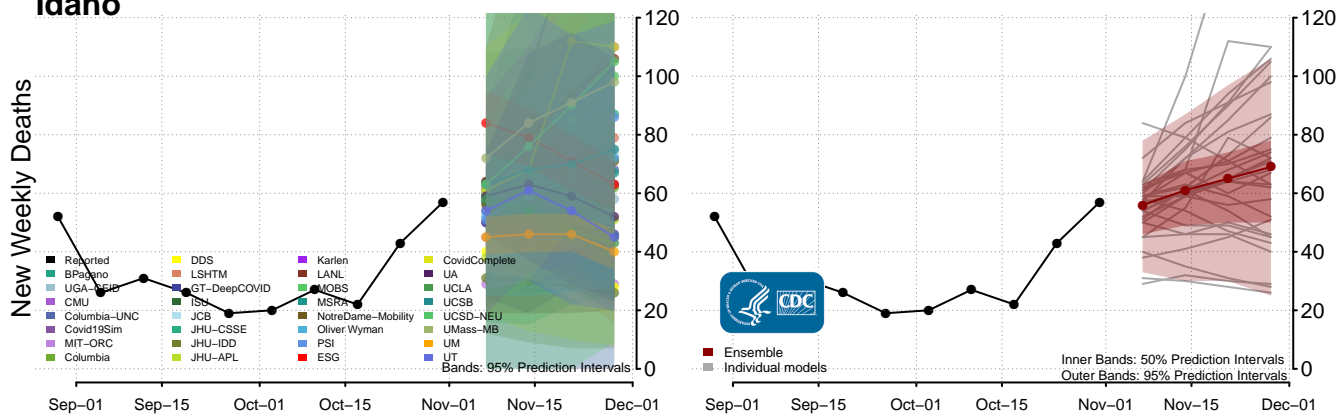
# Guam



### Hawaii

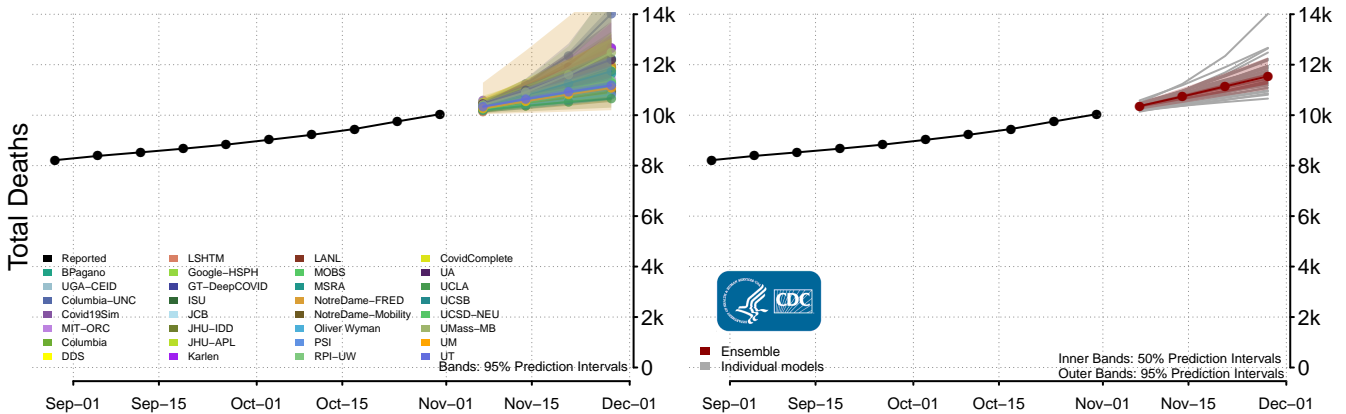
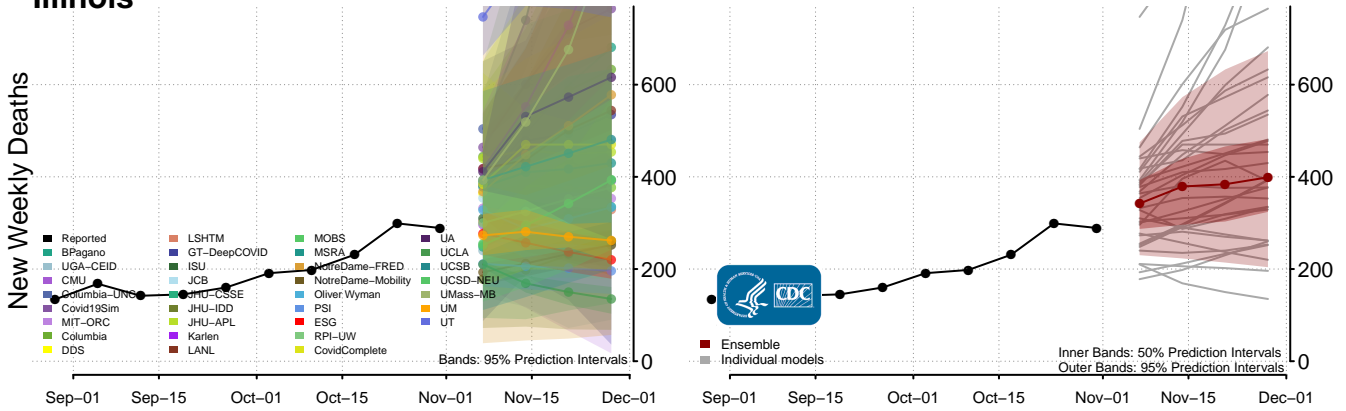


### Idaho

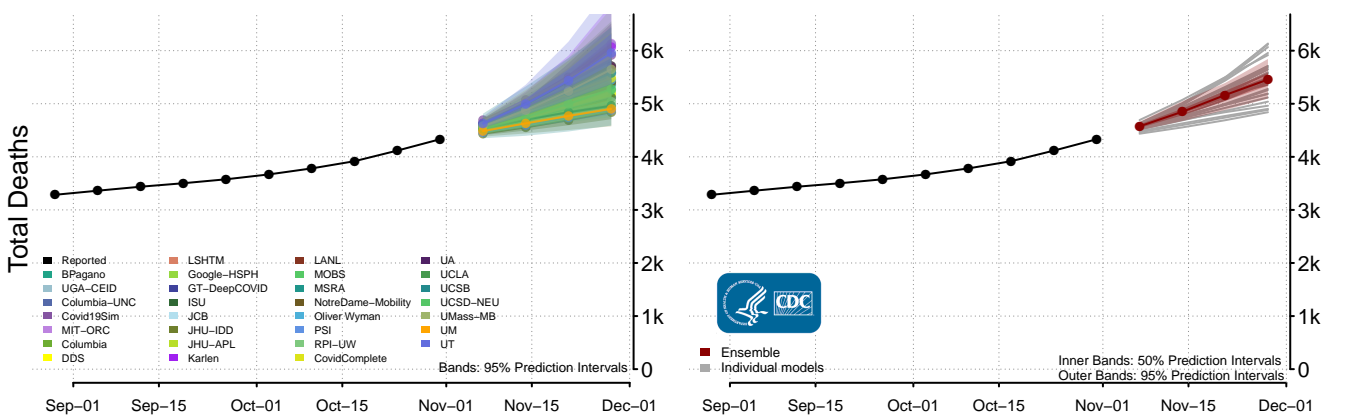
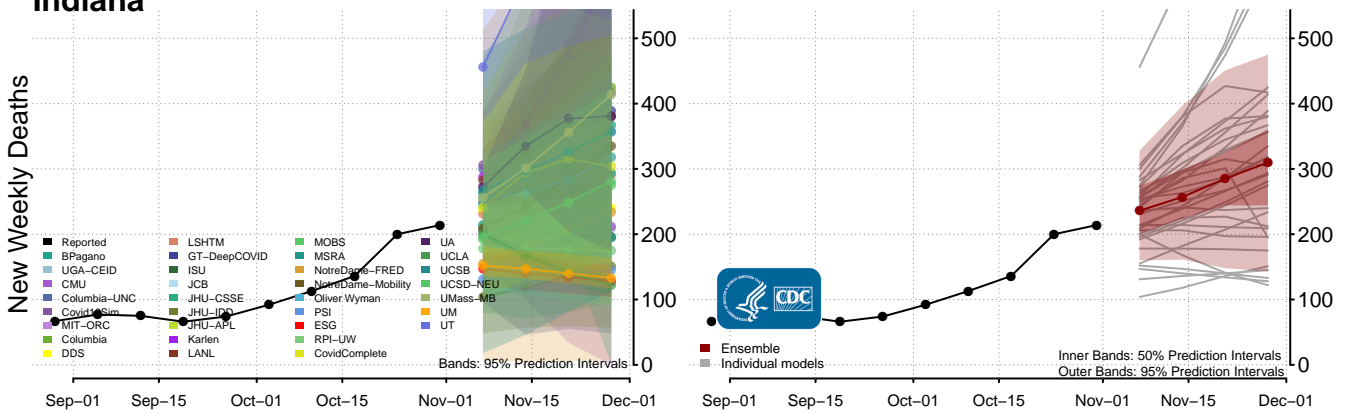




### Illinois\*\*

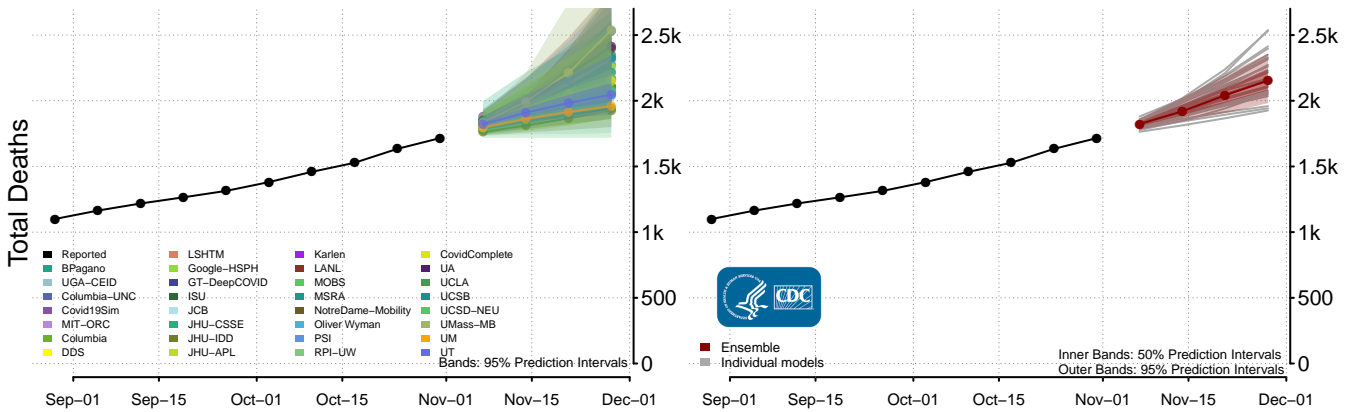
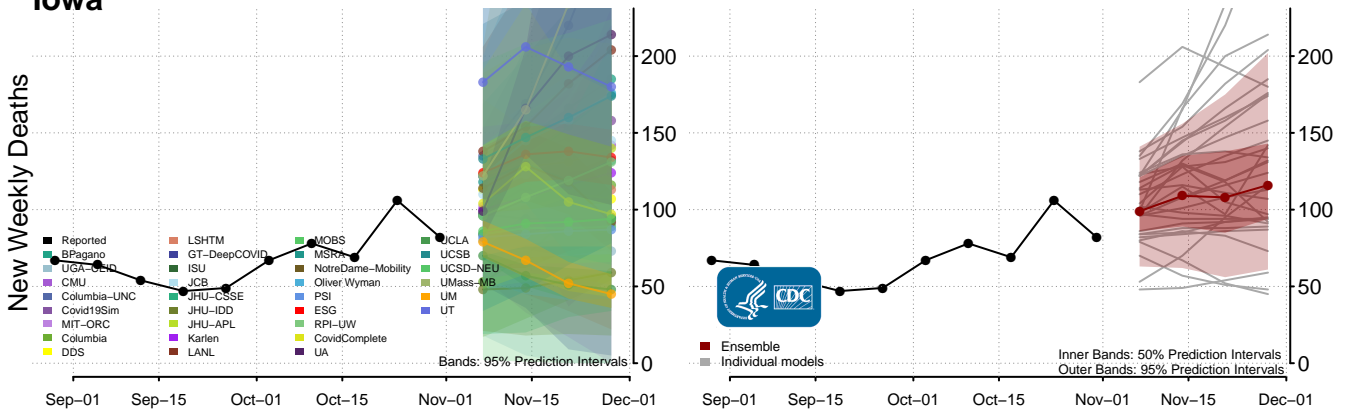


### Indiana\*\*

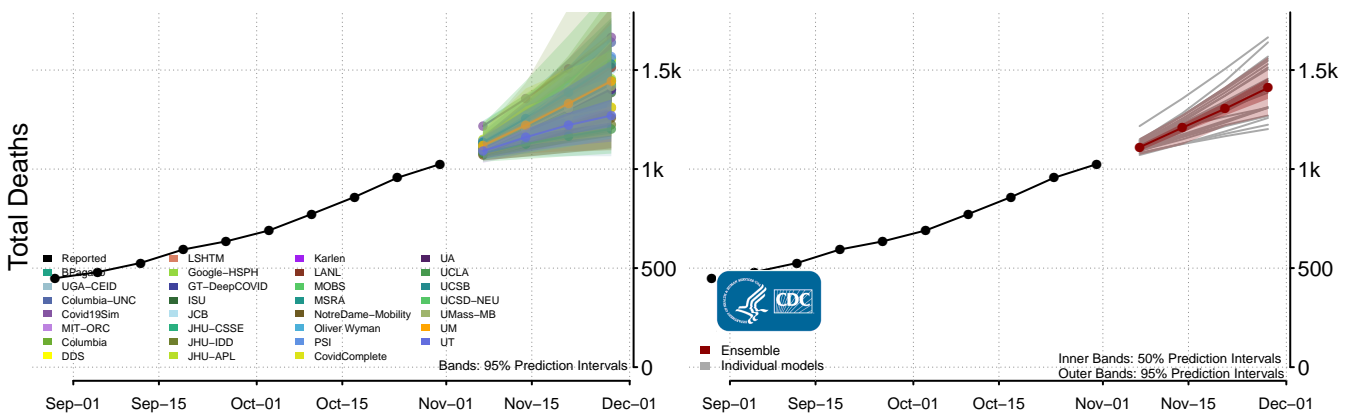
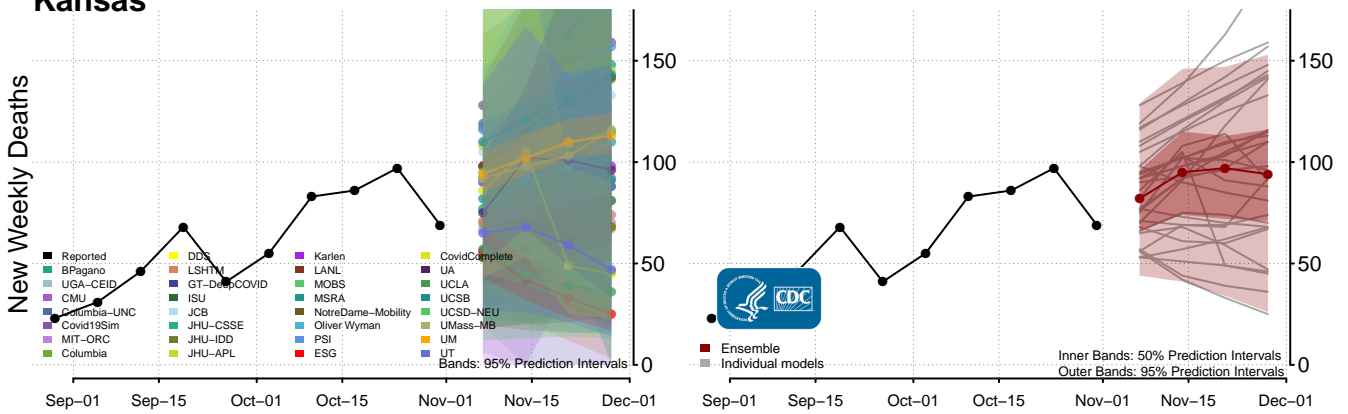


\*\*New weekly deaths may increase in this location over the next four weeks. For these locations, the ensemble forecast indicates a probability of 0.75 or greater that more deaths will be reported in week four of the forecast than in the last reported week.

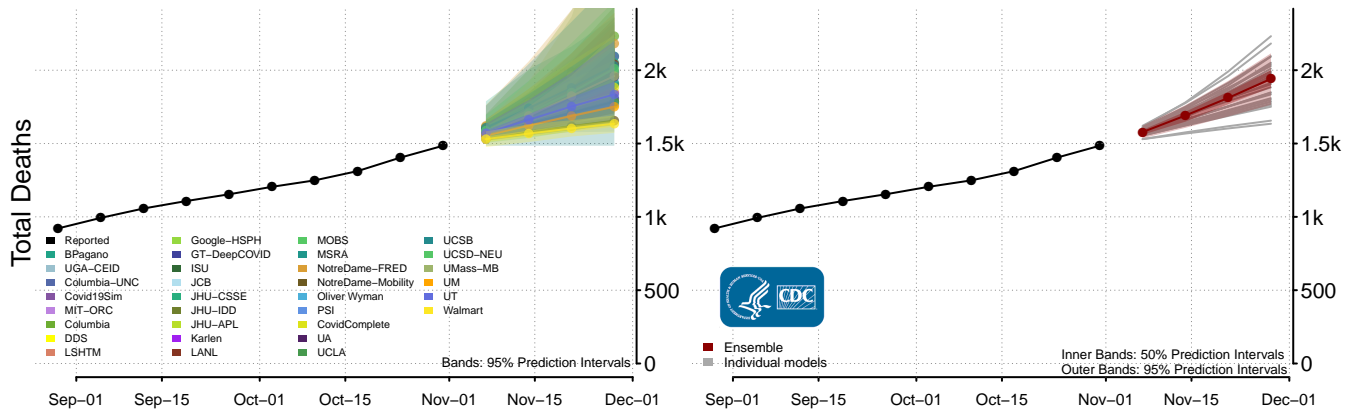
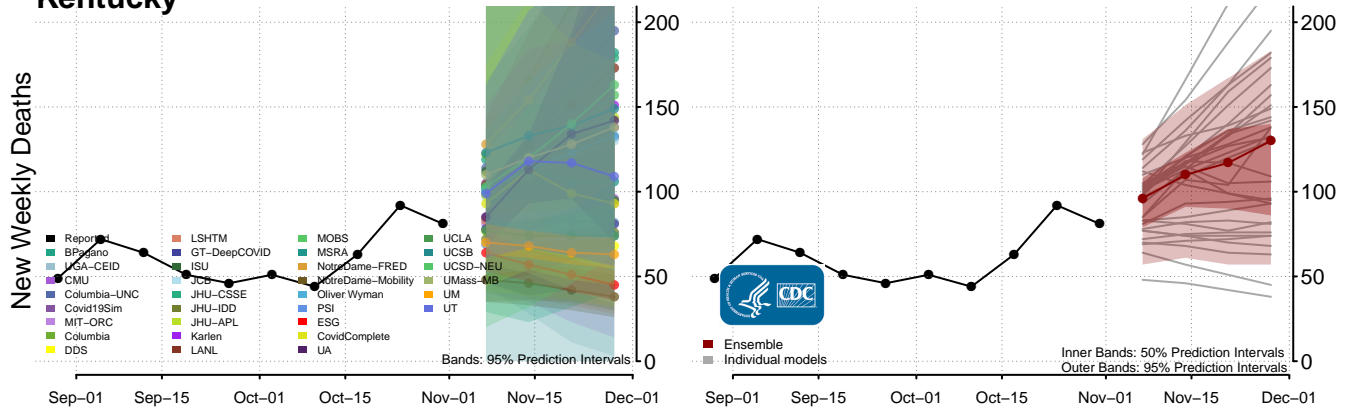
### Iowa



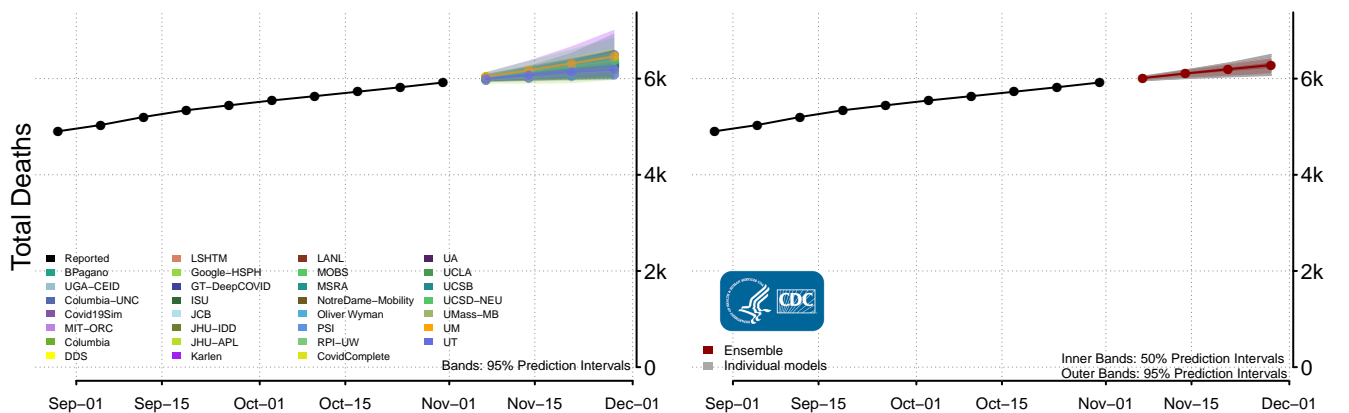
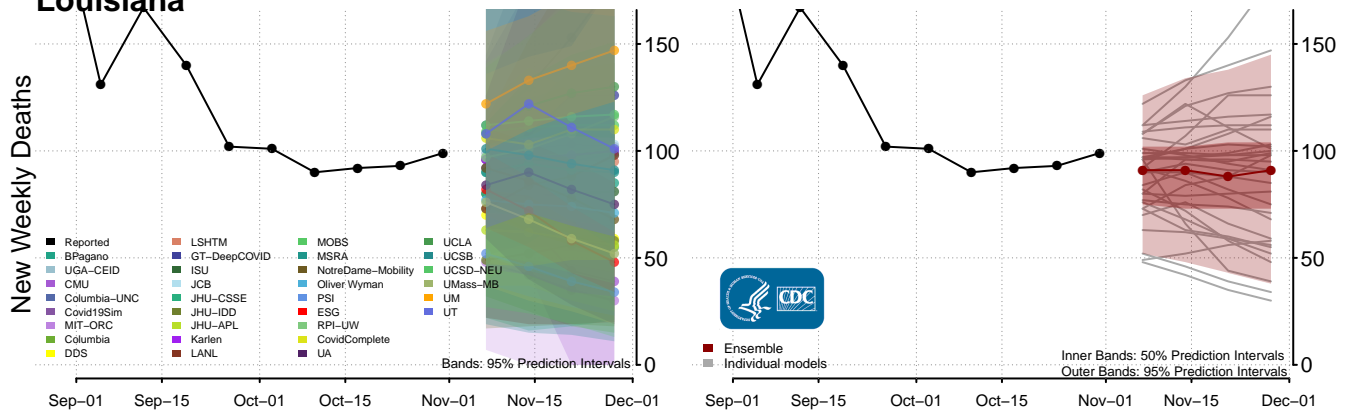
### Kansas



### Kentucky\*\*

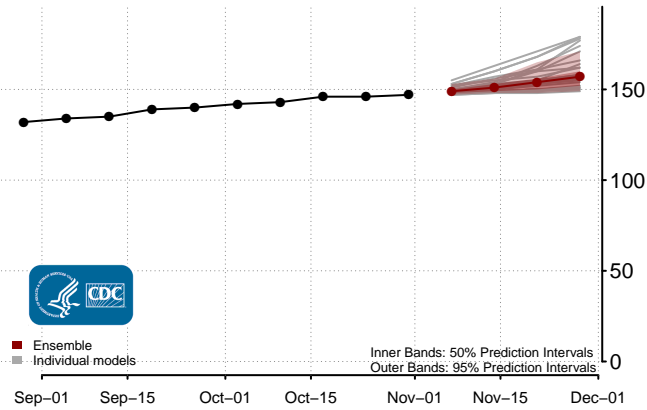
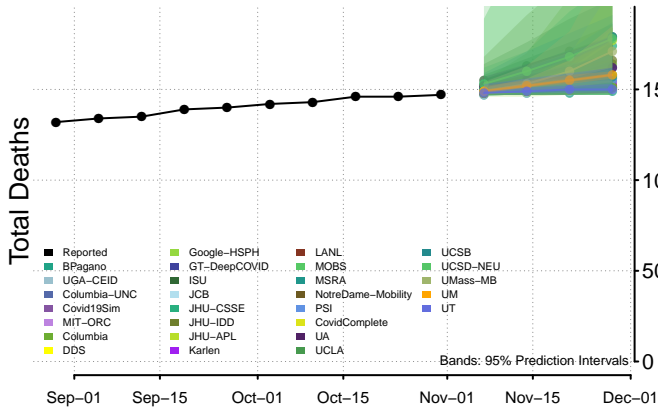
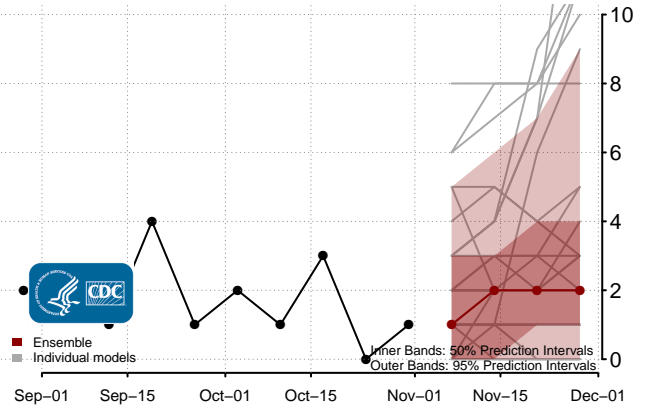
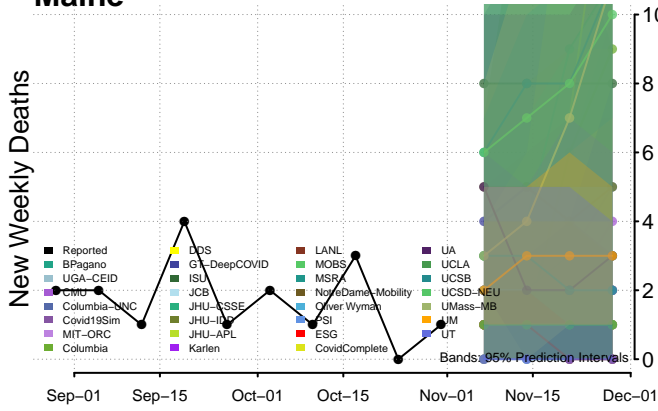


### Louisiana

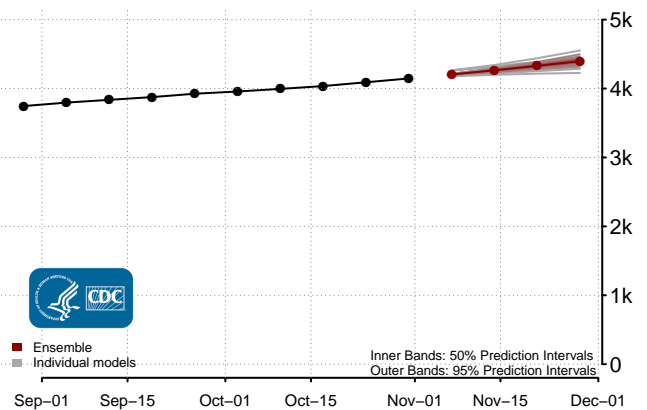
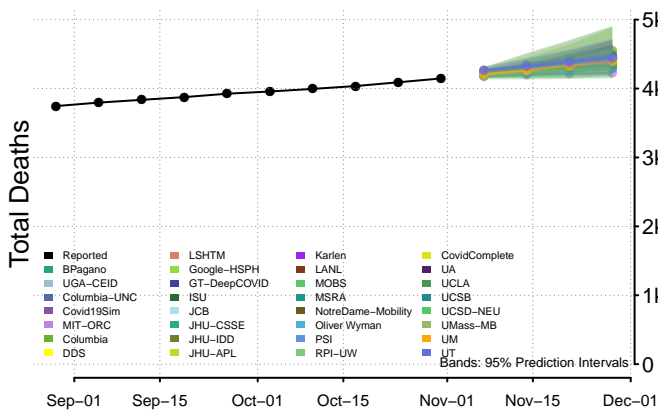
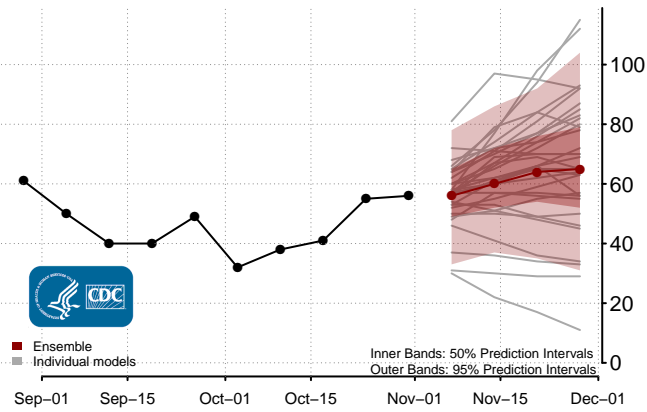
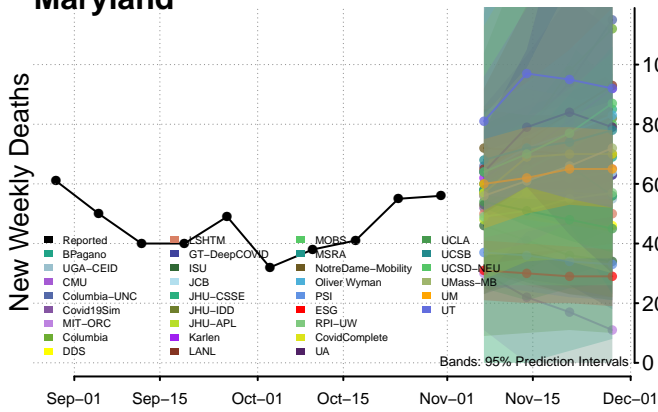


\*\*New weekly deaths may increase in this location over the next four weeks. For these locations, the ensemble forecast indicates a probability of 0.75 or greater that more deaths will be reported in week four of the forecast than in the last reported week.

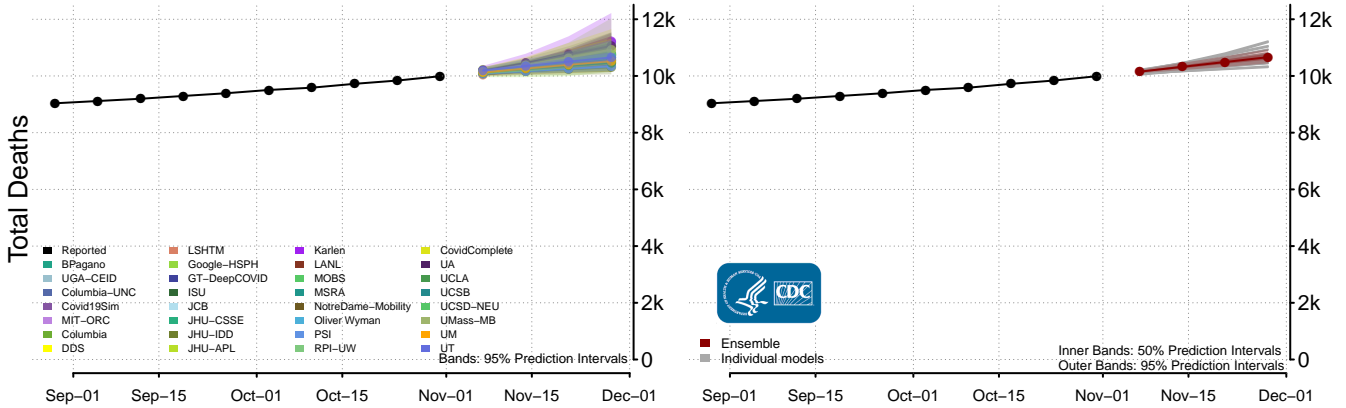
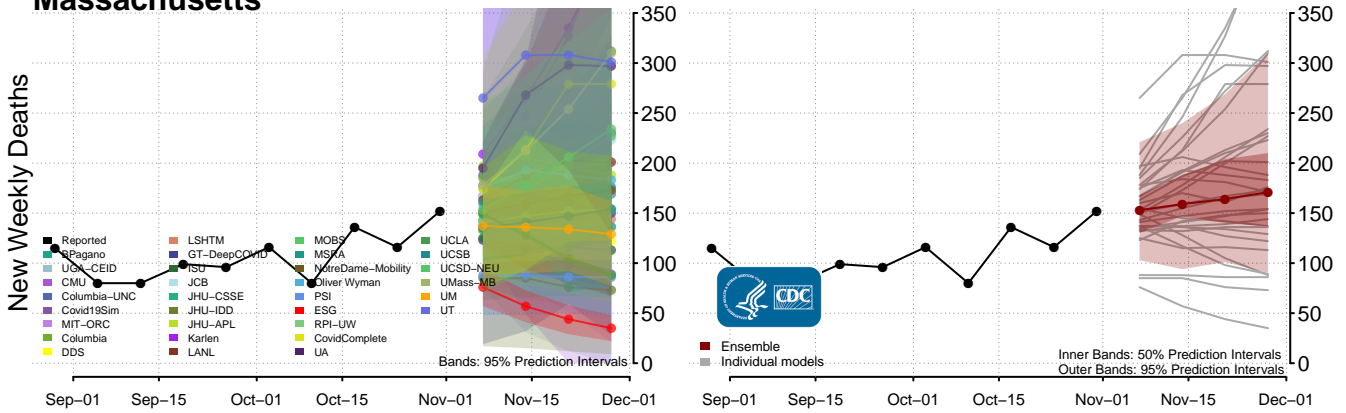
### Maine



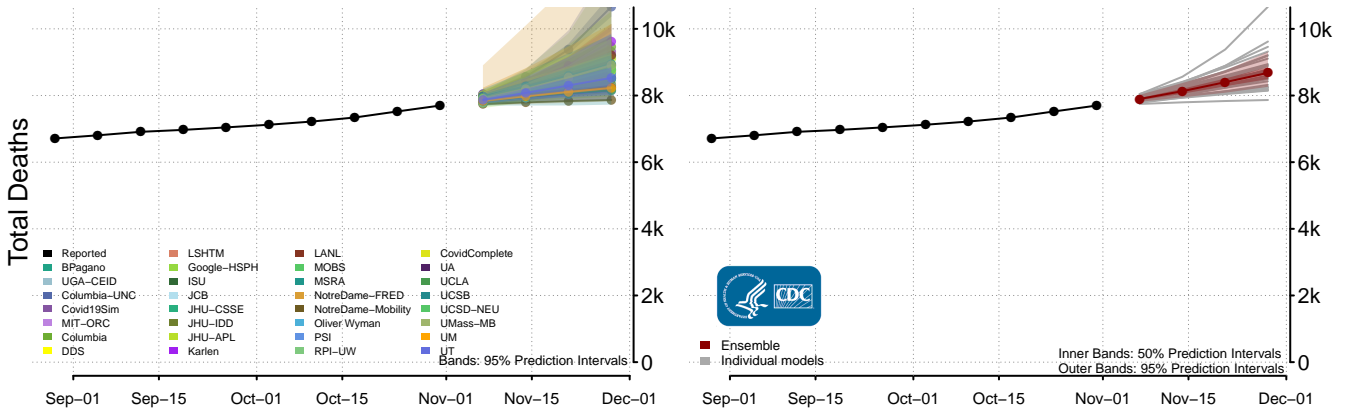
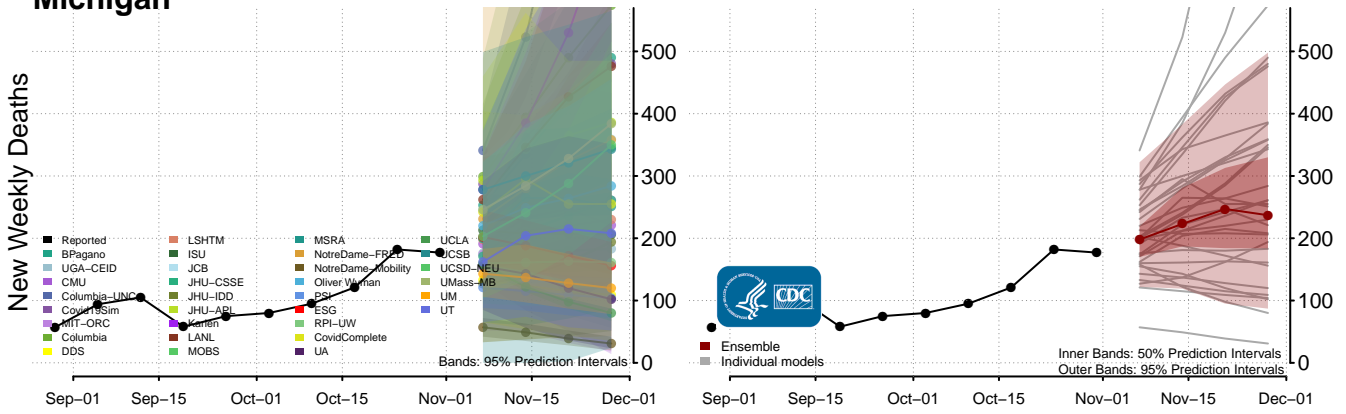
### Maryland



### Massachusetts

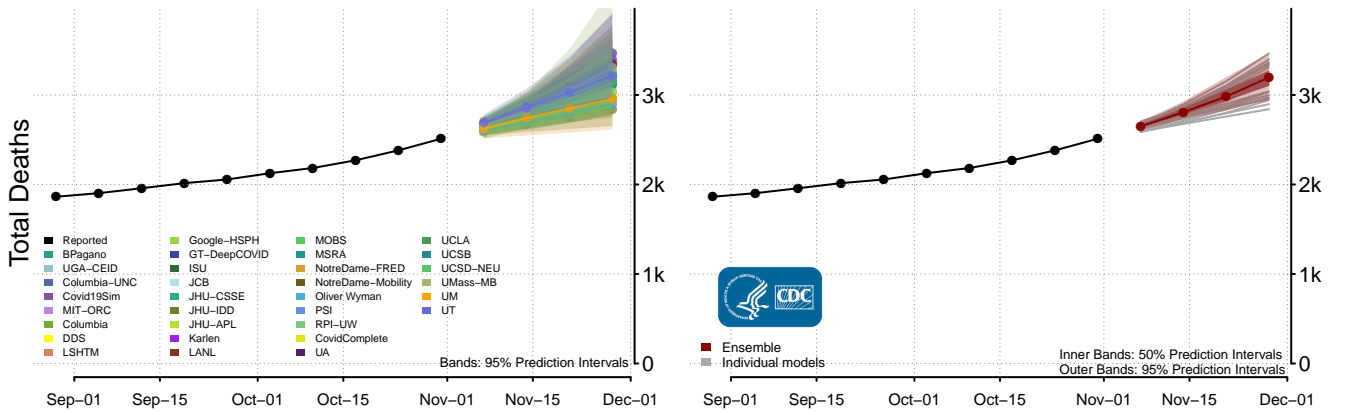
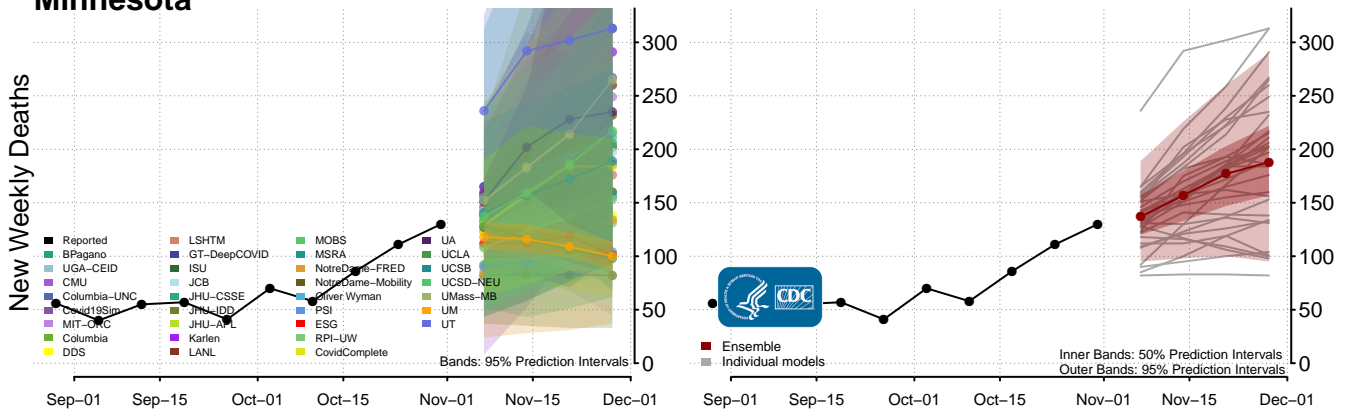


### Michigan\*\*

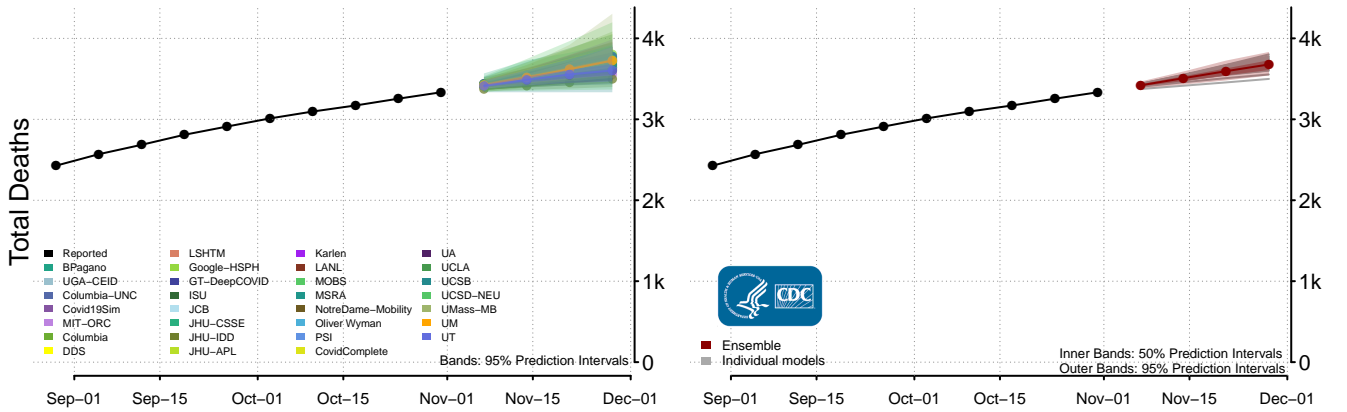
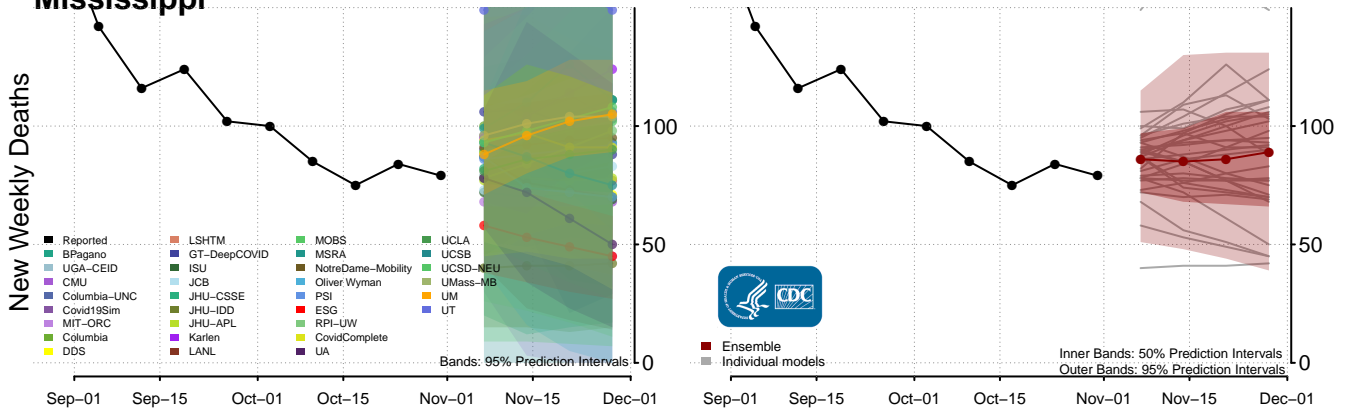


\*\*New weekly deaths may increase in this location over the next four weeks. For these locations, the ensemble forecast indicates a probability of 0.75 or greater that more deaths will be reported in week four of the forecast than in the last reported week.

### Minnesota\*\*



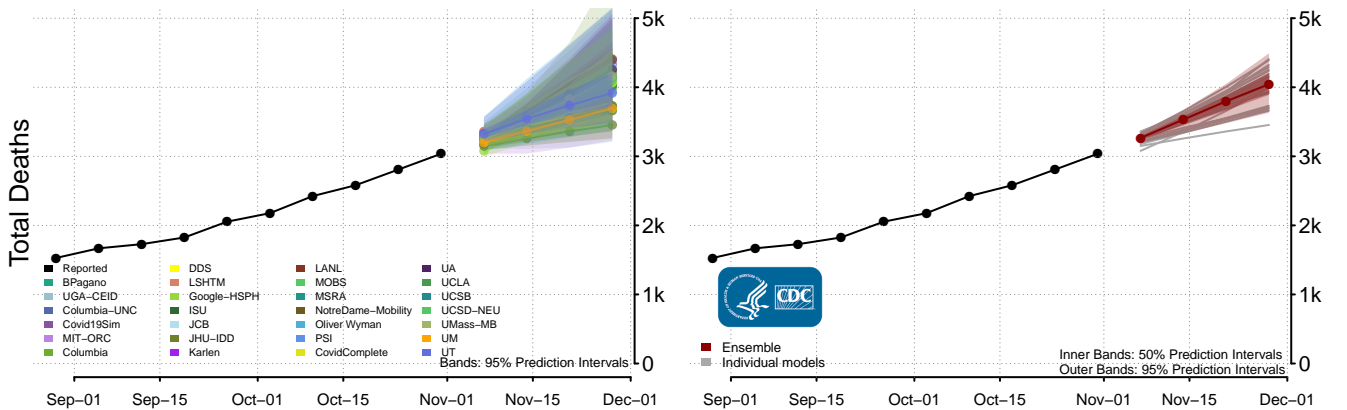
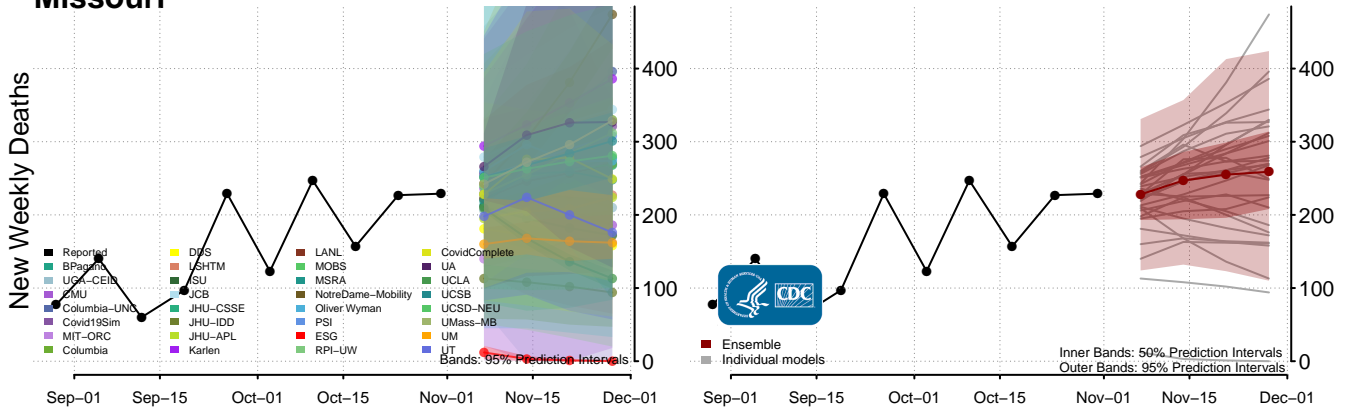
### Mississippi



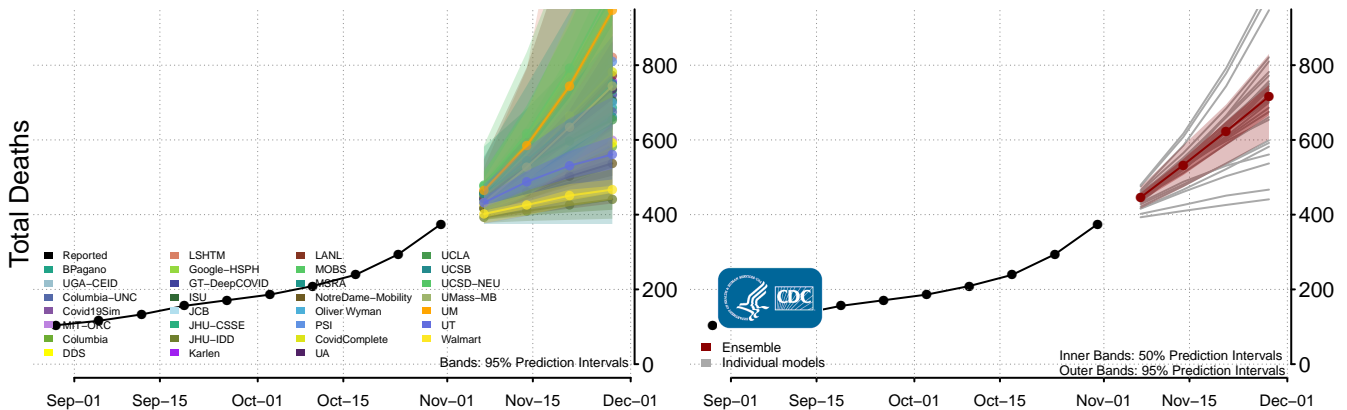
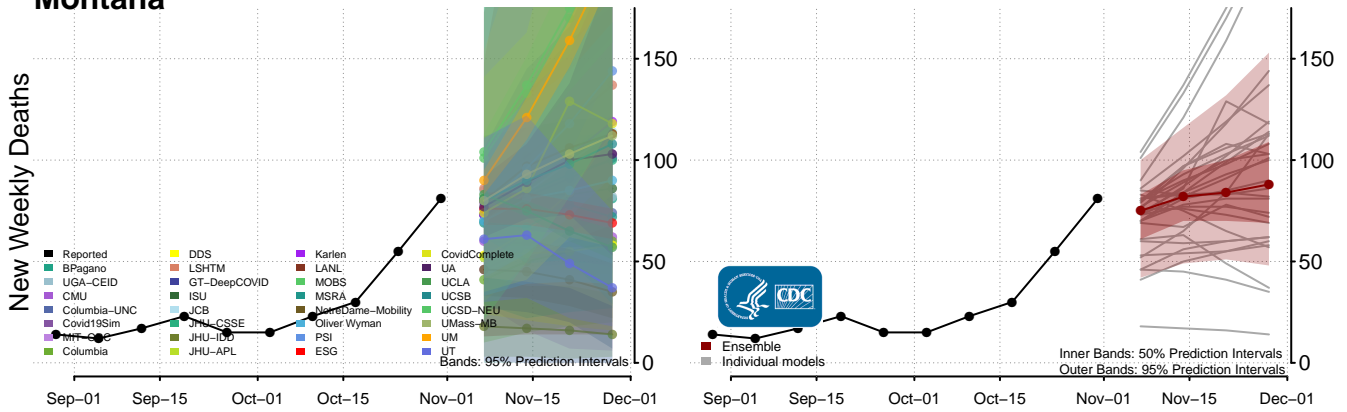
\*\*New weekly deaths may increase in this location over the next four weeks. For these locations, the ensemble forecast indicates a probability of 0.75 or greater that more deaths will be reported in week four of the forecast than in the last reported week.



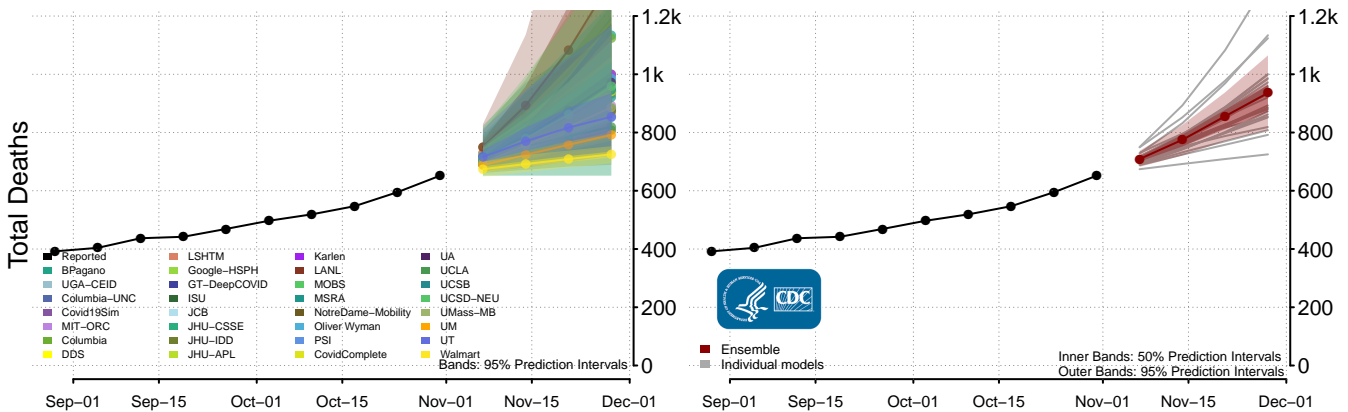
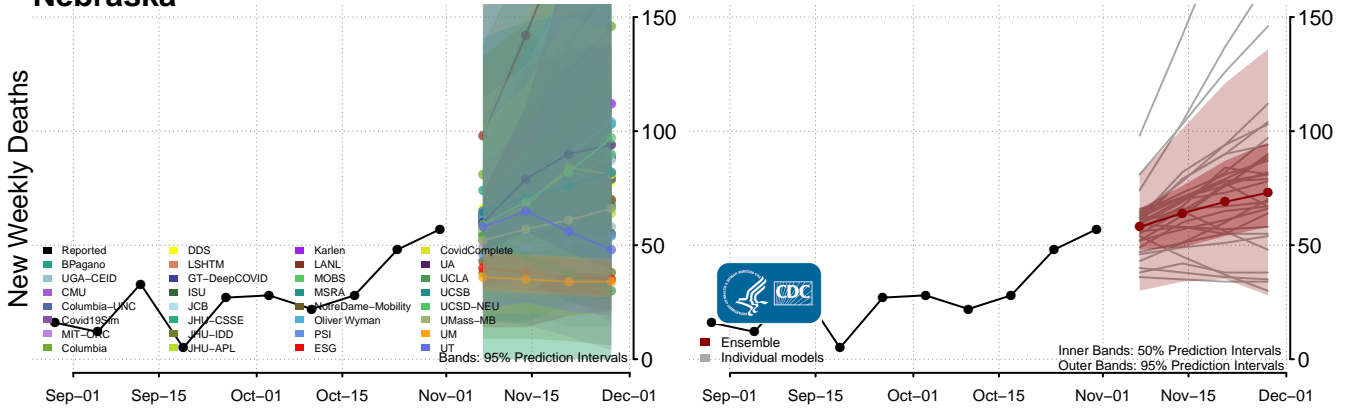
### Missouri



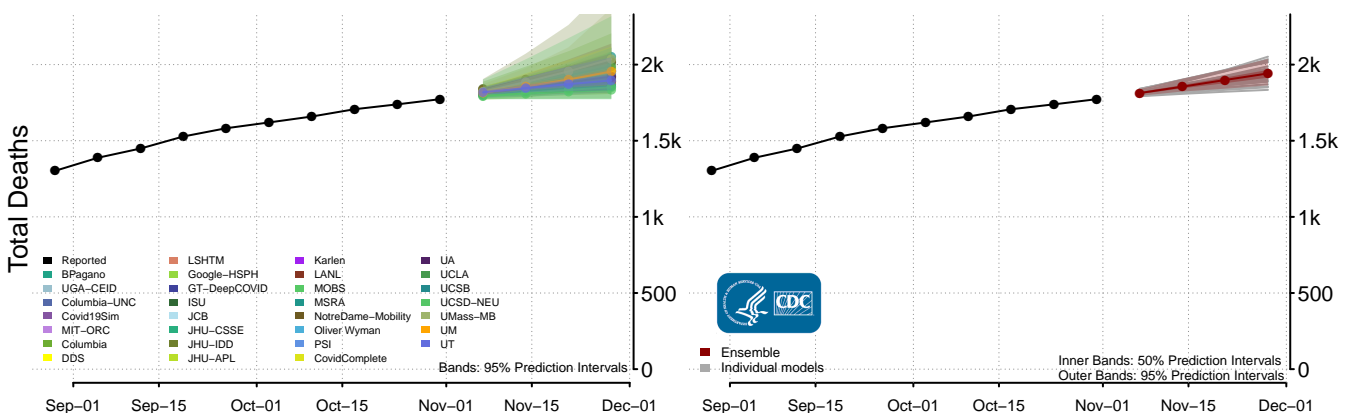
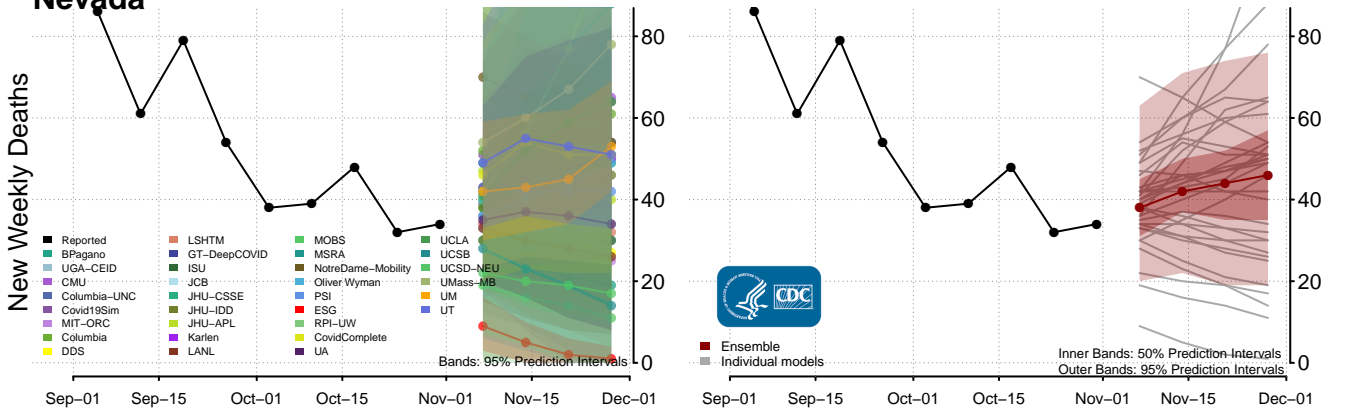
### Montana



### Nebraska\*\*

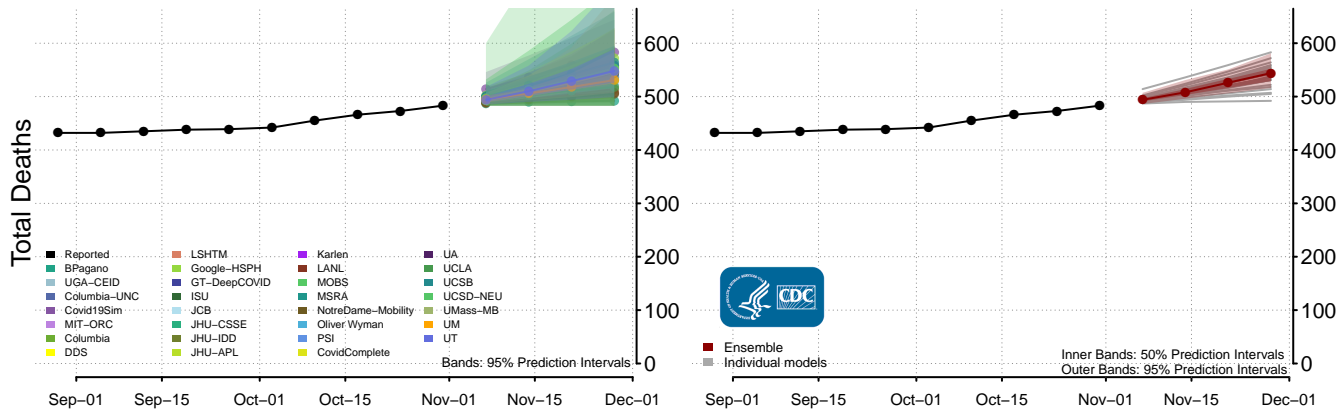
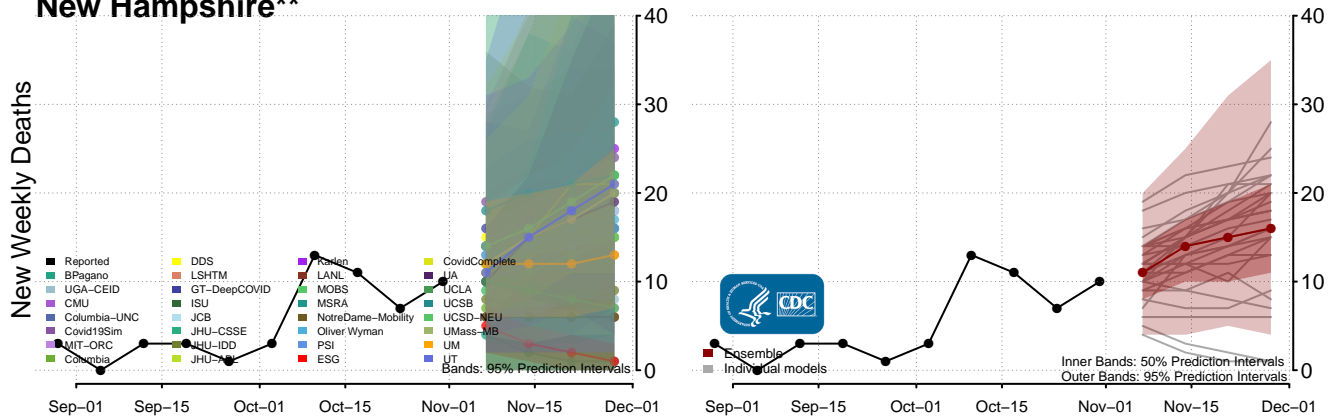


### Nevada\*\*

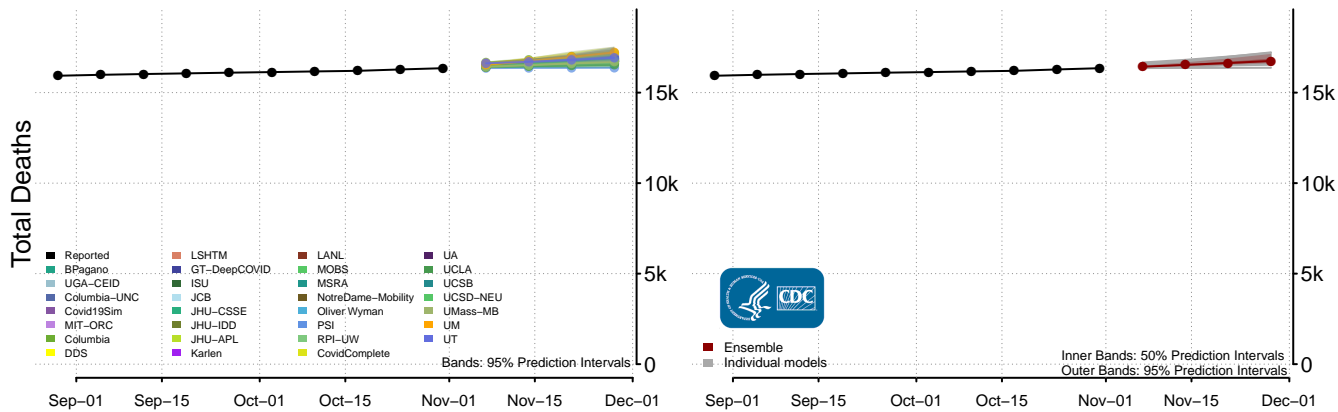
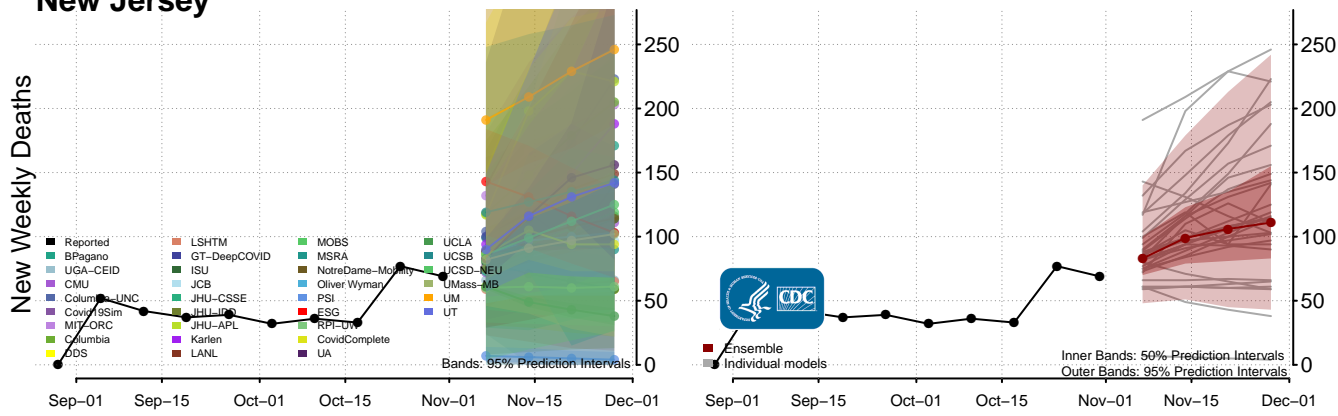


\*\*New weekly deaths may increase in this location over the next four weeks. For these locations, the ensemble forecast indicates a probability of 0.75 or greater that more deaths will be reported in week four of the forecast than in the last reported week.

### New Hampshire\*\*

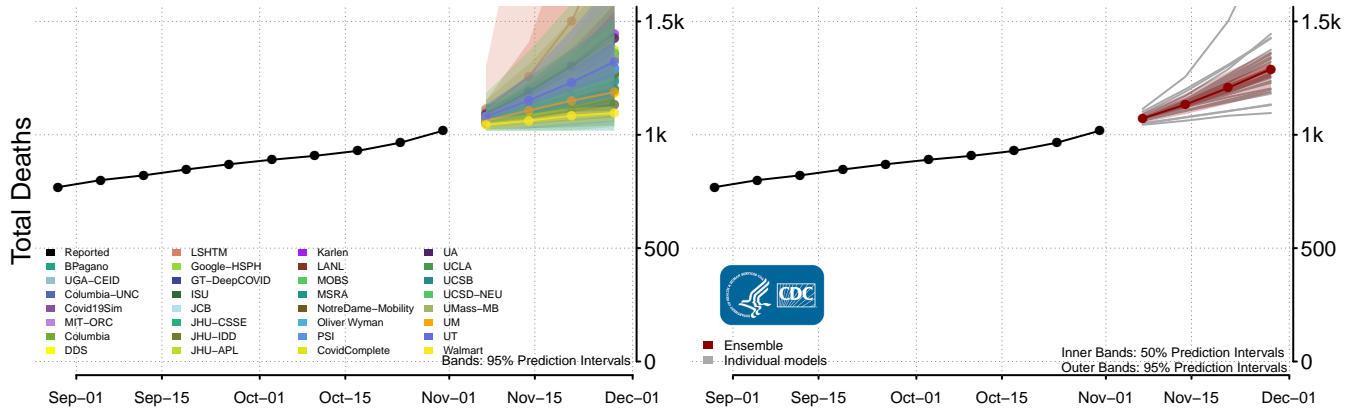
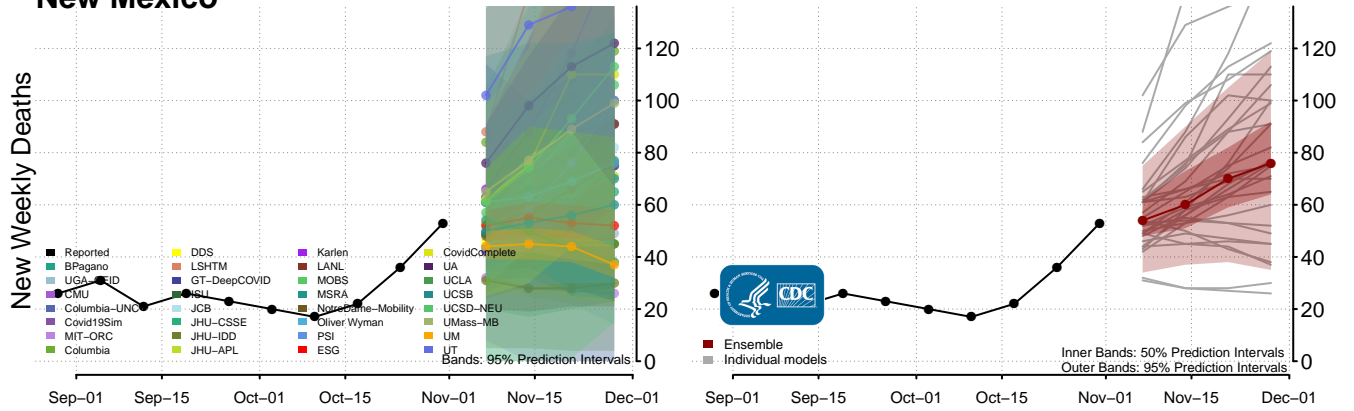


### New Jersey\*\*

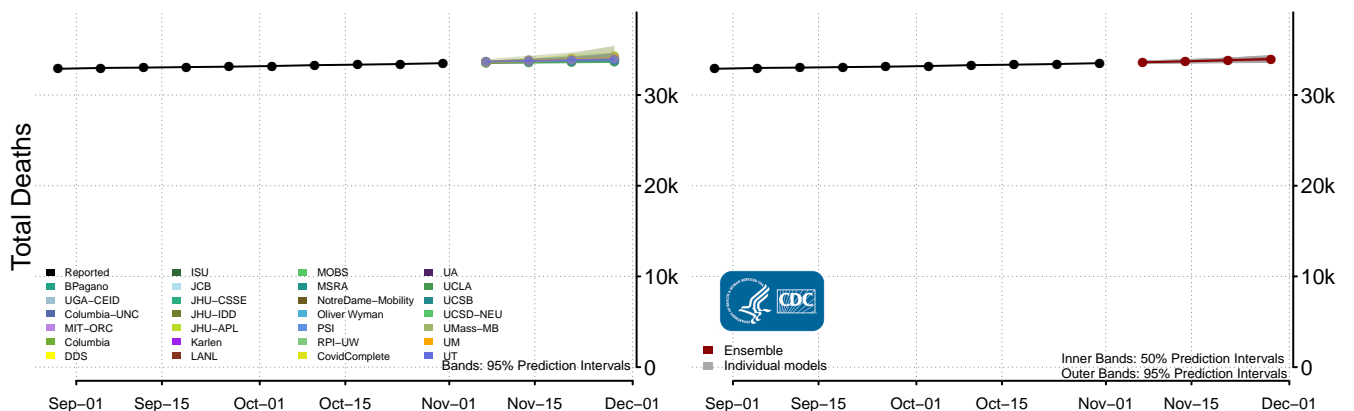
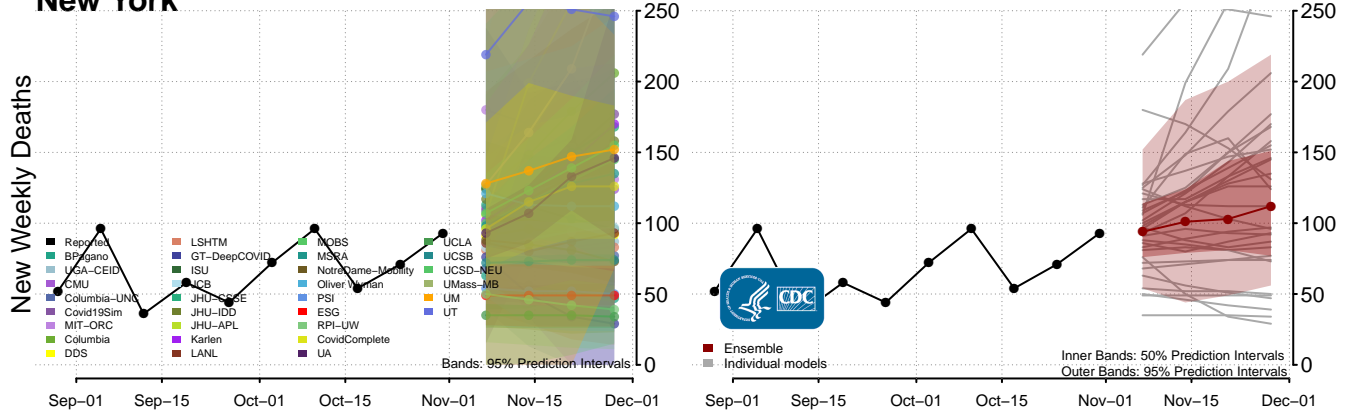


\*\*New weekly deaths may increase in this location over the next four weeks. For these locations, the ensemble forecast indicates a probability of 0.75 or greater that more deaths will be reported in week four of the forecast than in the last reported week.

### New Mexico\*\*

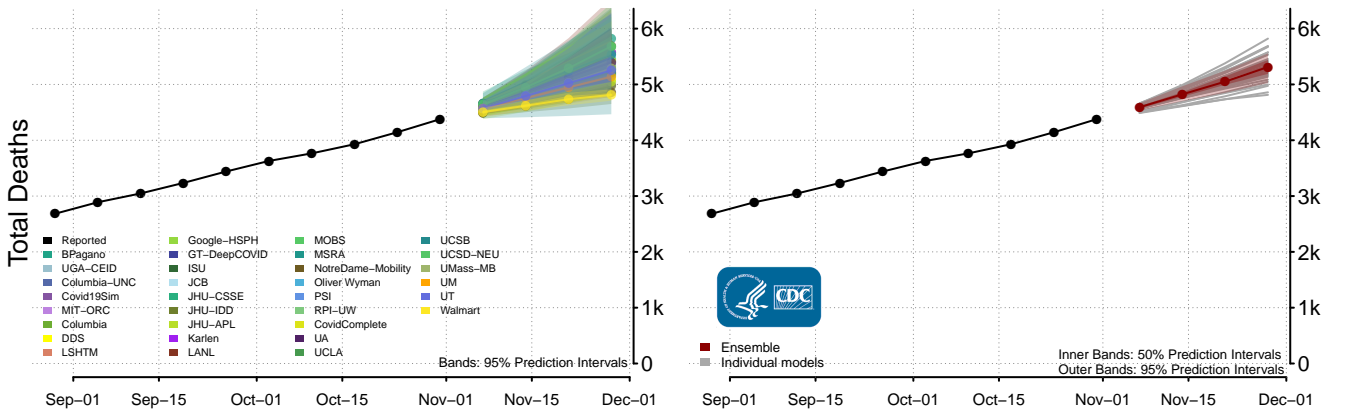
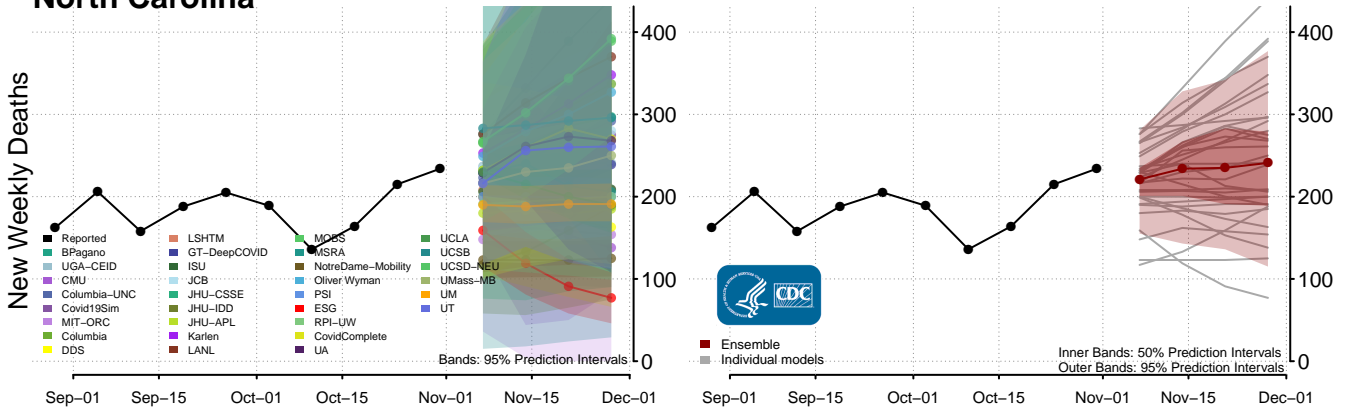


### New York

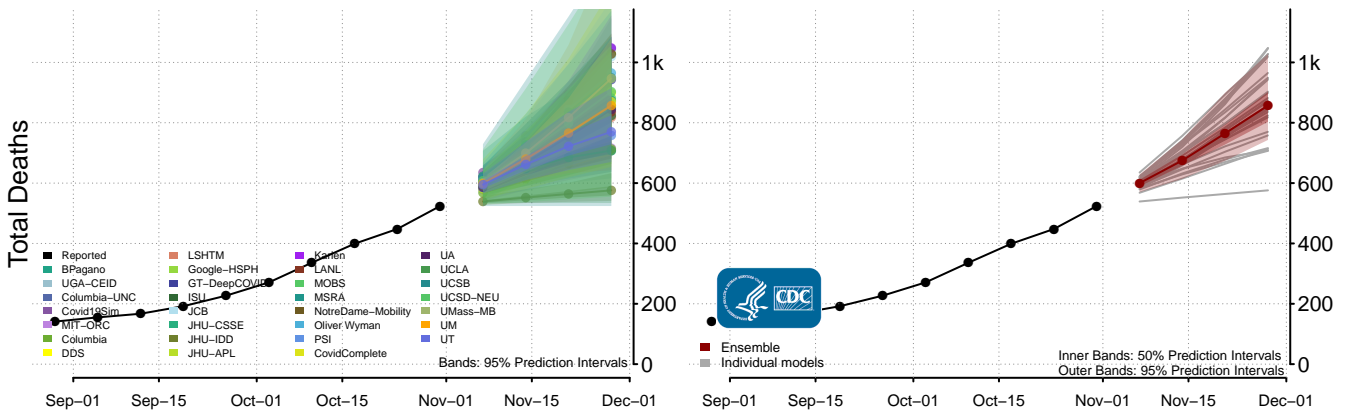
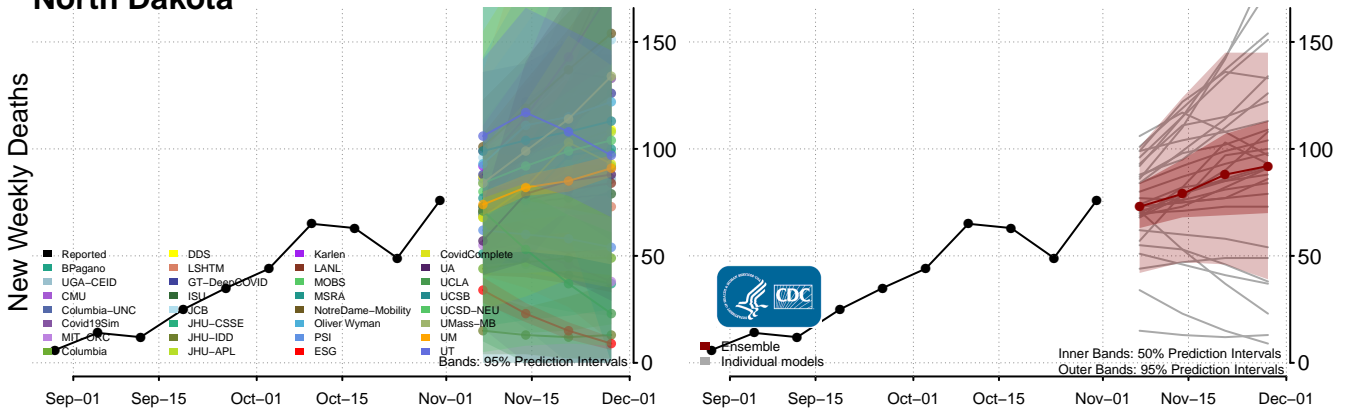


\*\*New weekly deaths may increase in this location over the next four weeks. For these locations, the ensemble forecast indicates a probability of 0.75 or greater that more deaths will be reported in week four of the forecast than in the last reported week.

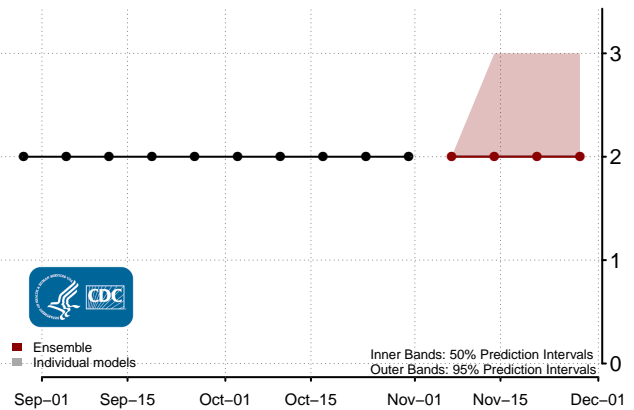
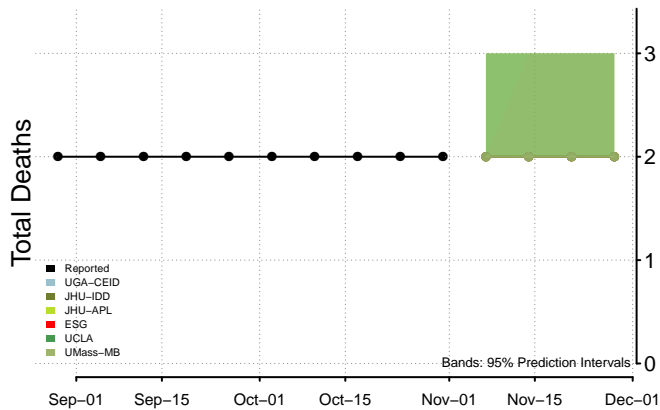
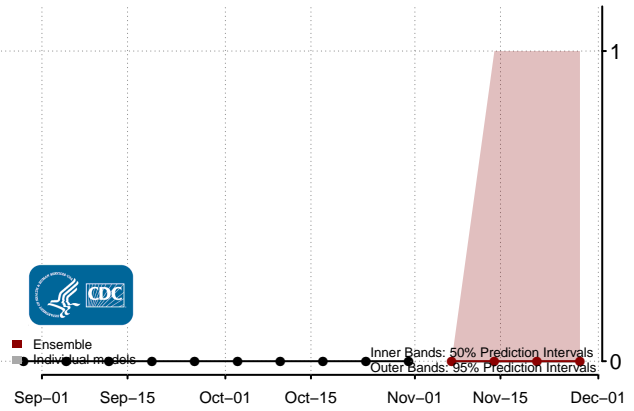
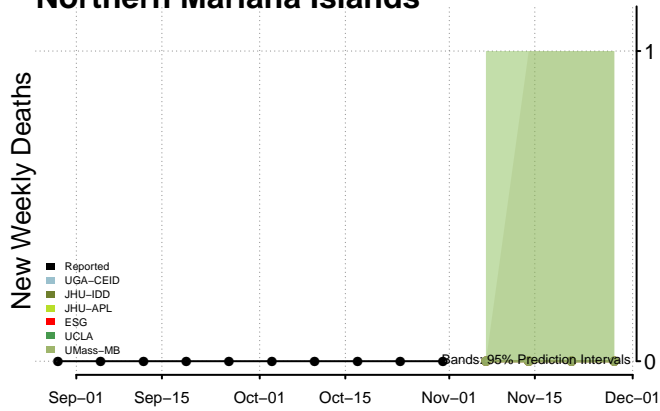
### North Carolina



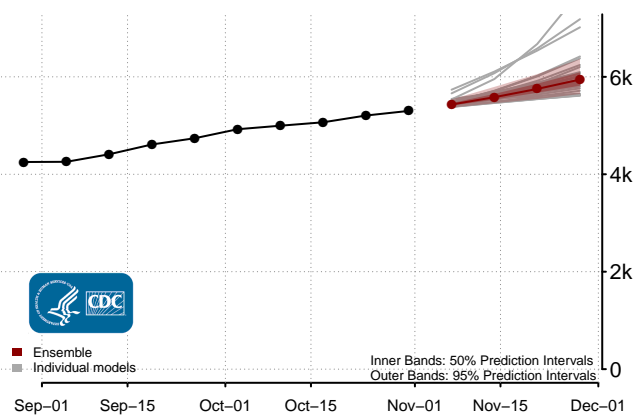
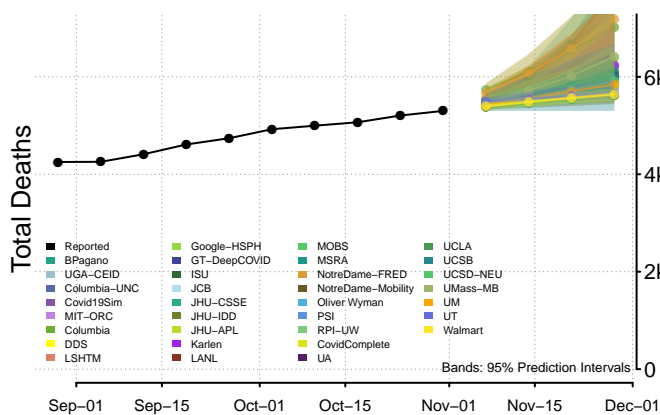
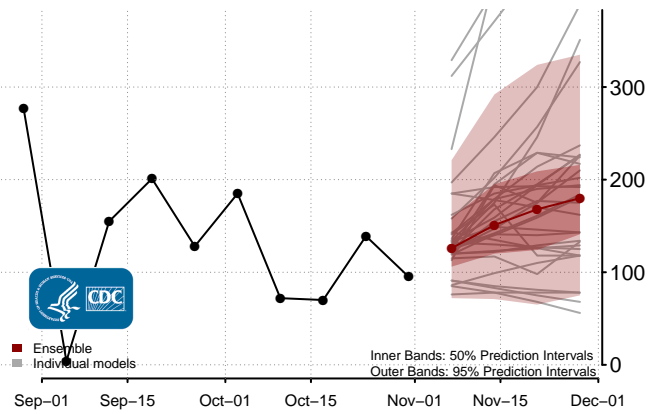
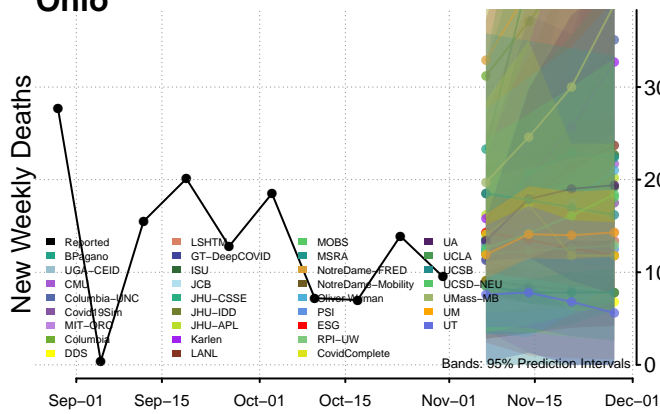
### North Dakota



### Northern Mariana Islands

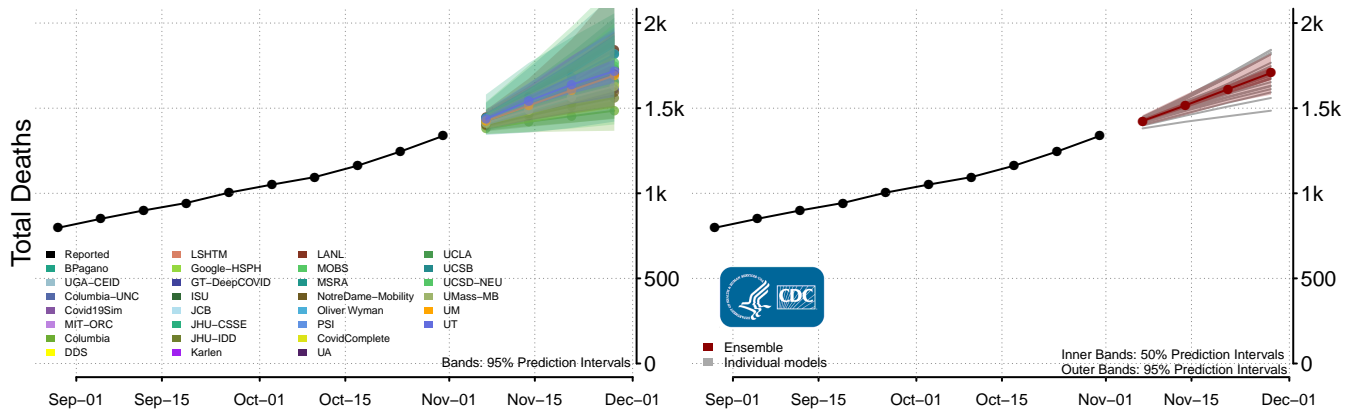
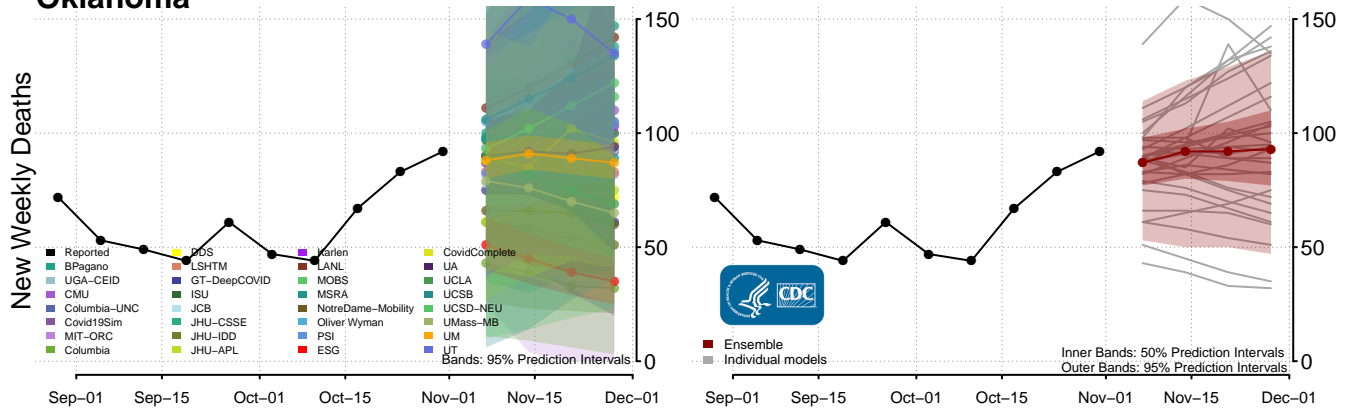


### Ohio

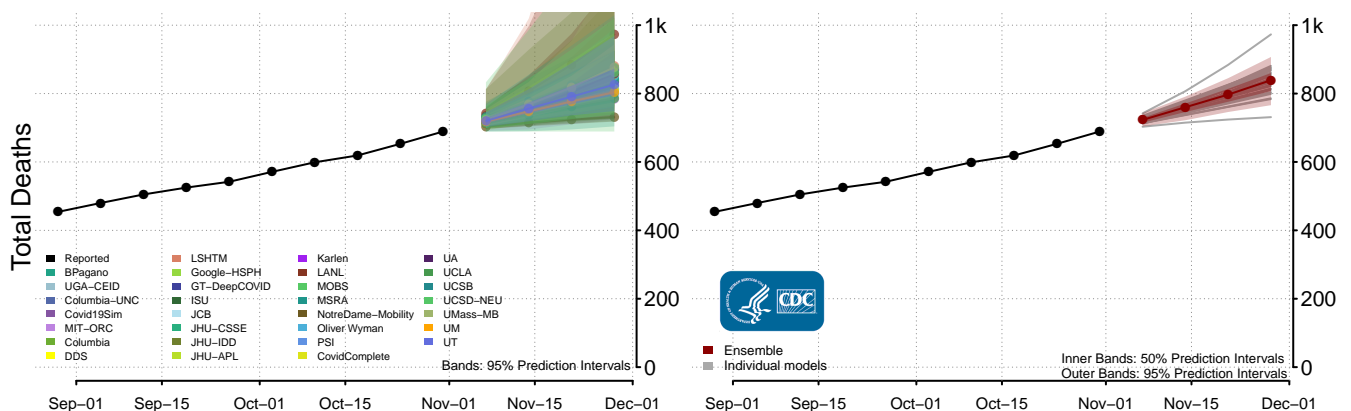
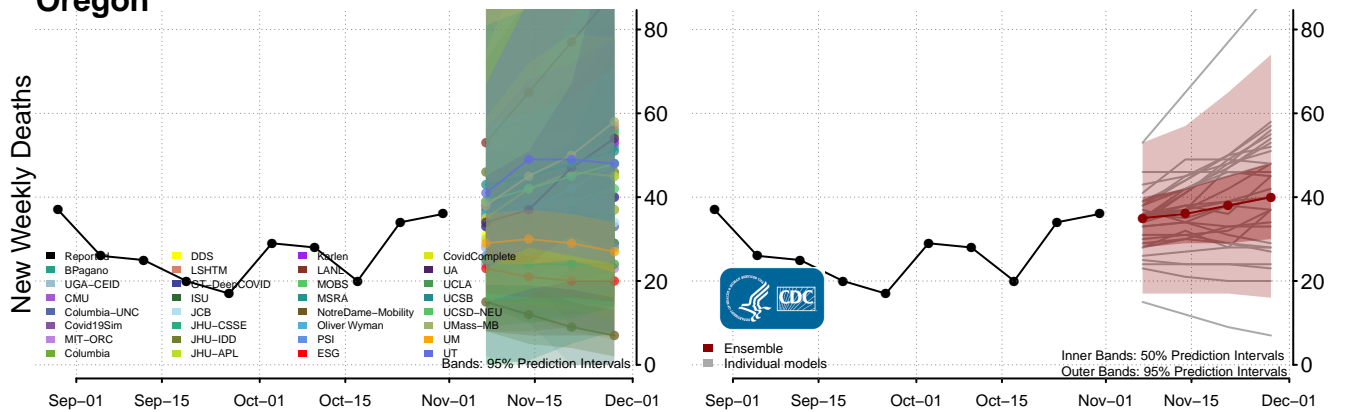




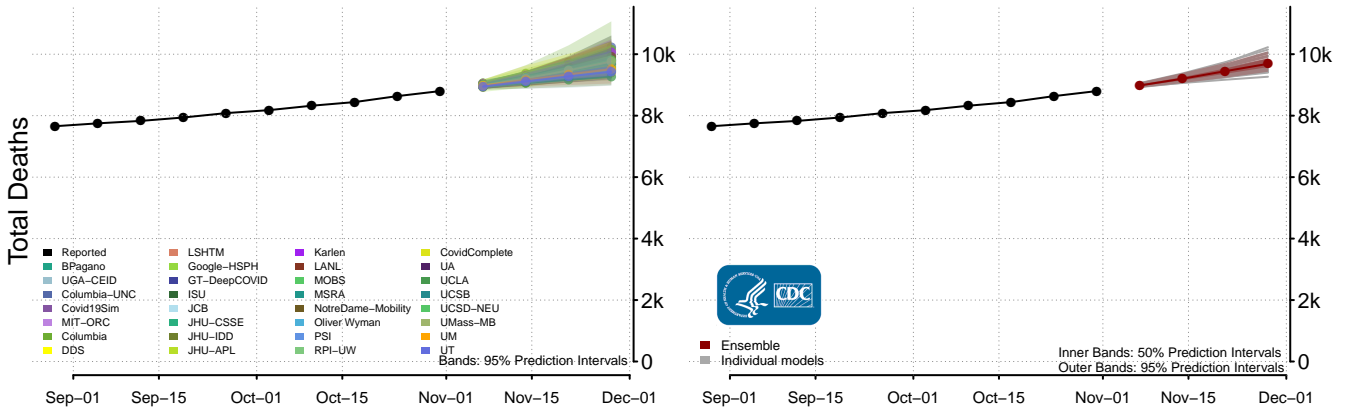
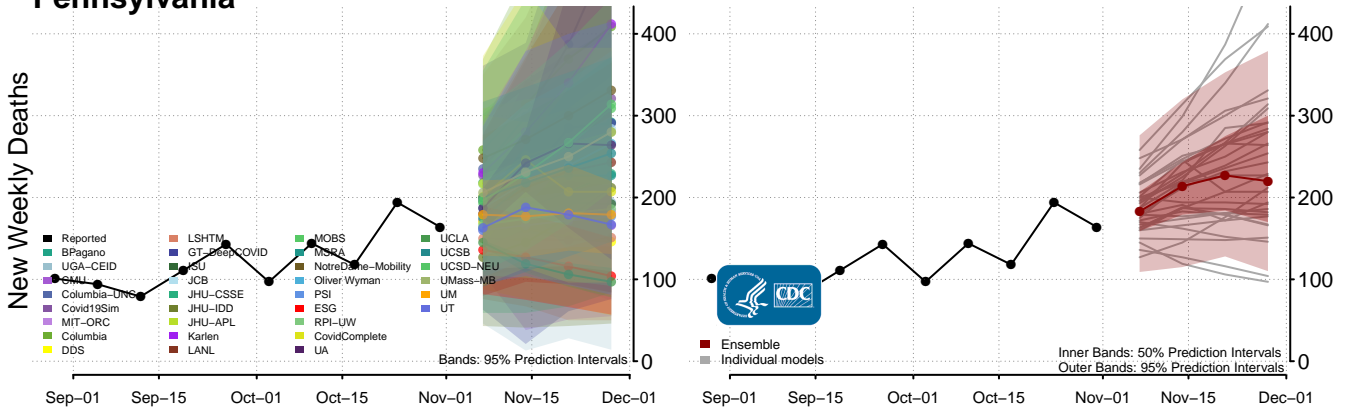
### Oklahoma



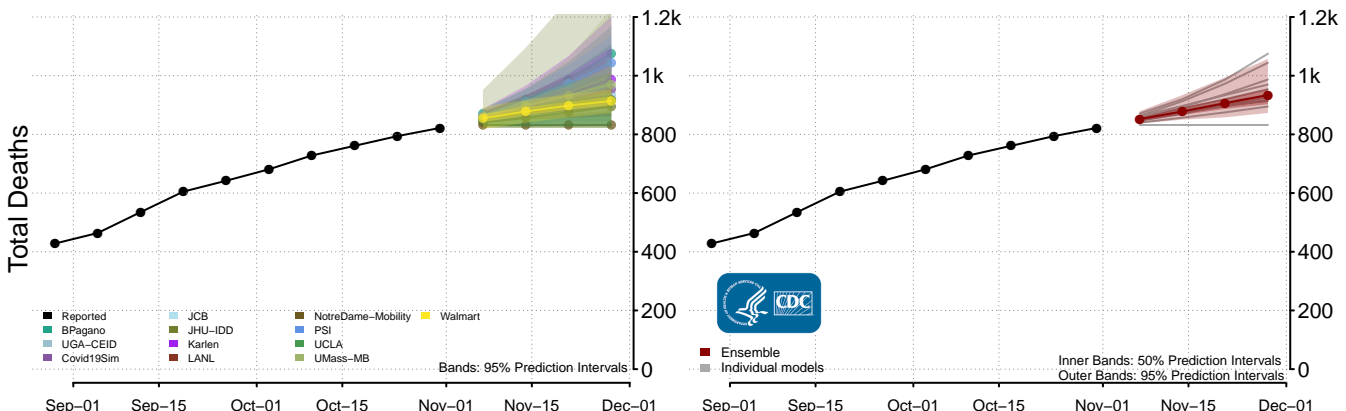
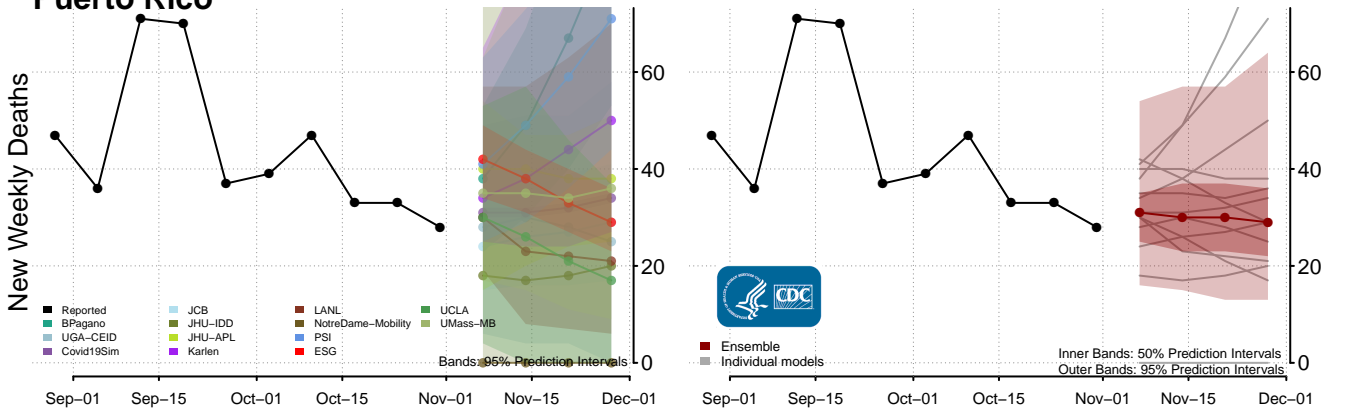
### Oregon



### Pennsylvania\*\*

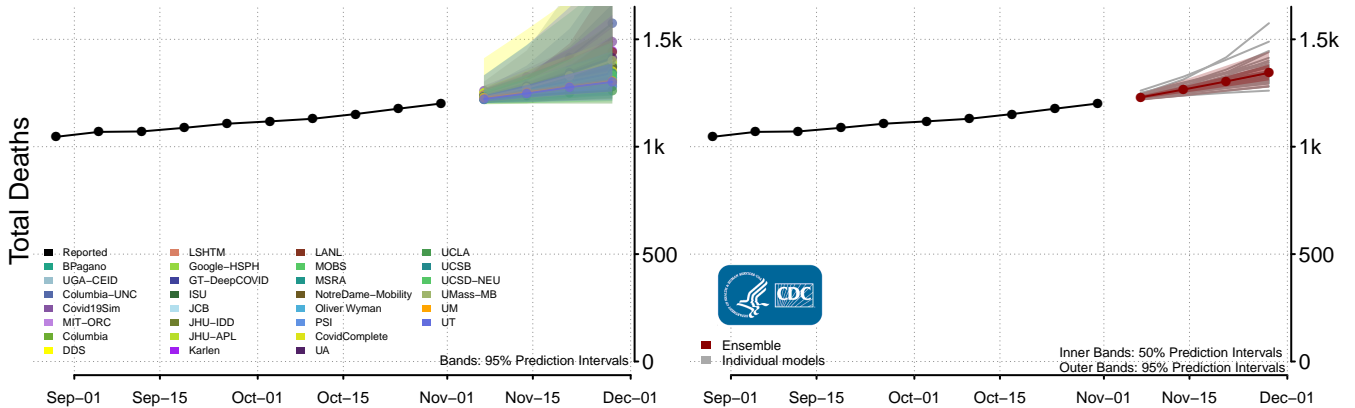
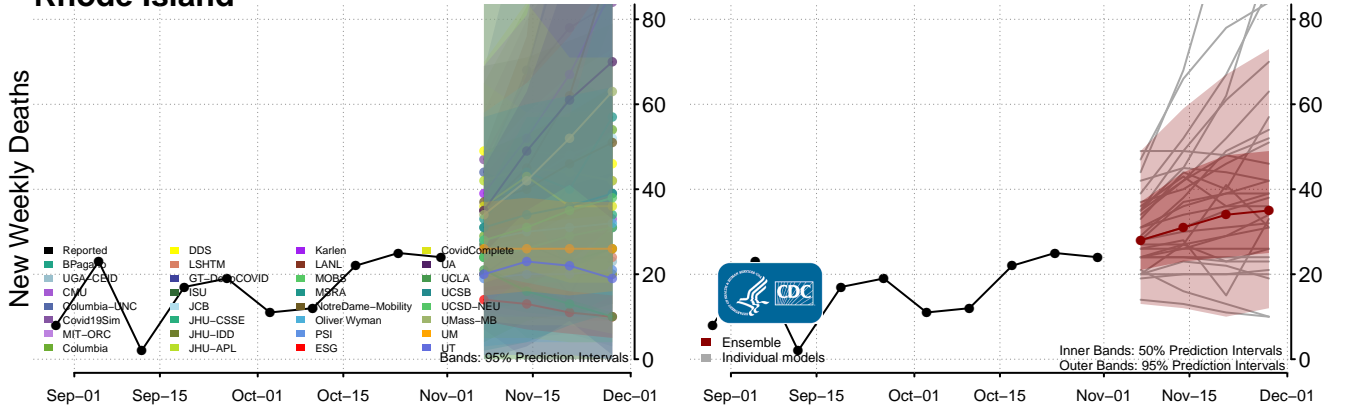


### Puerto Rico

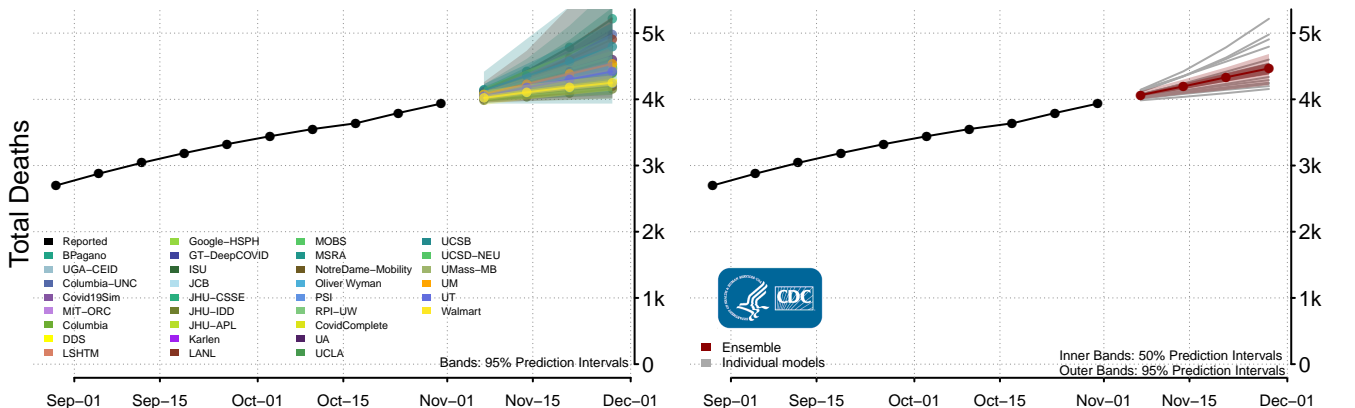
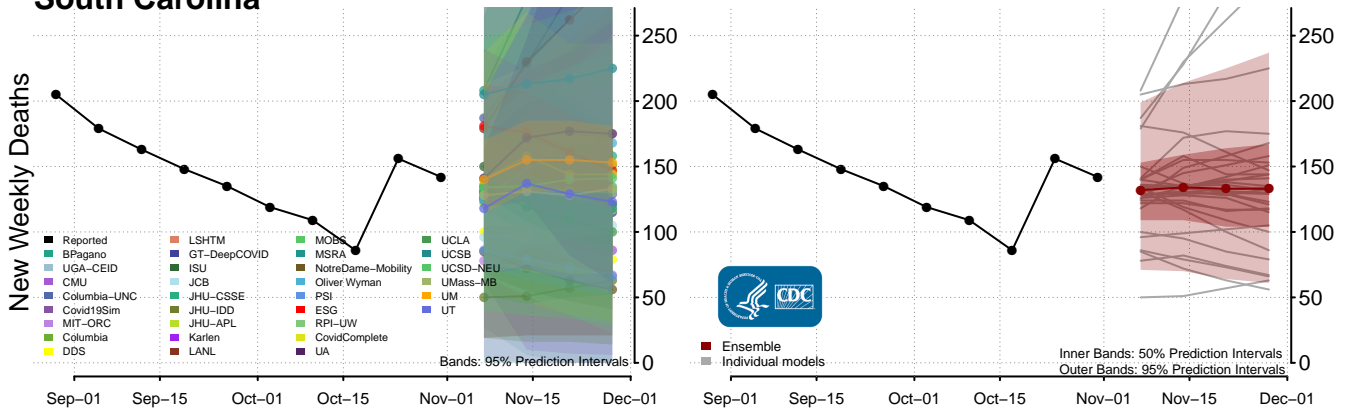


\*\*New weekly deaths may increase in this location over the next four weeks. For these locations, the ensemble forecast indicates a probability of 0.75 or greater that more deaths will be reported in week four of the forecast than in the last reported week.

### Rhode Island\*\*

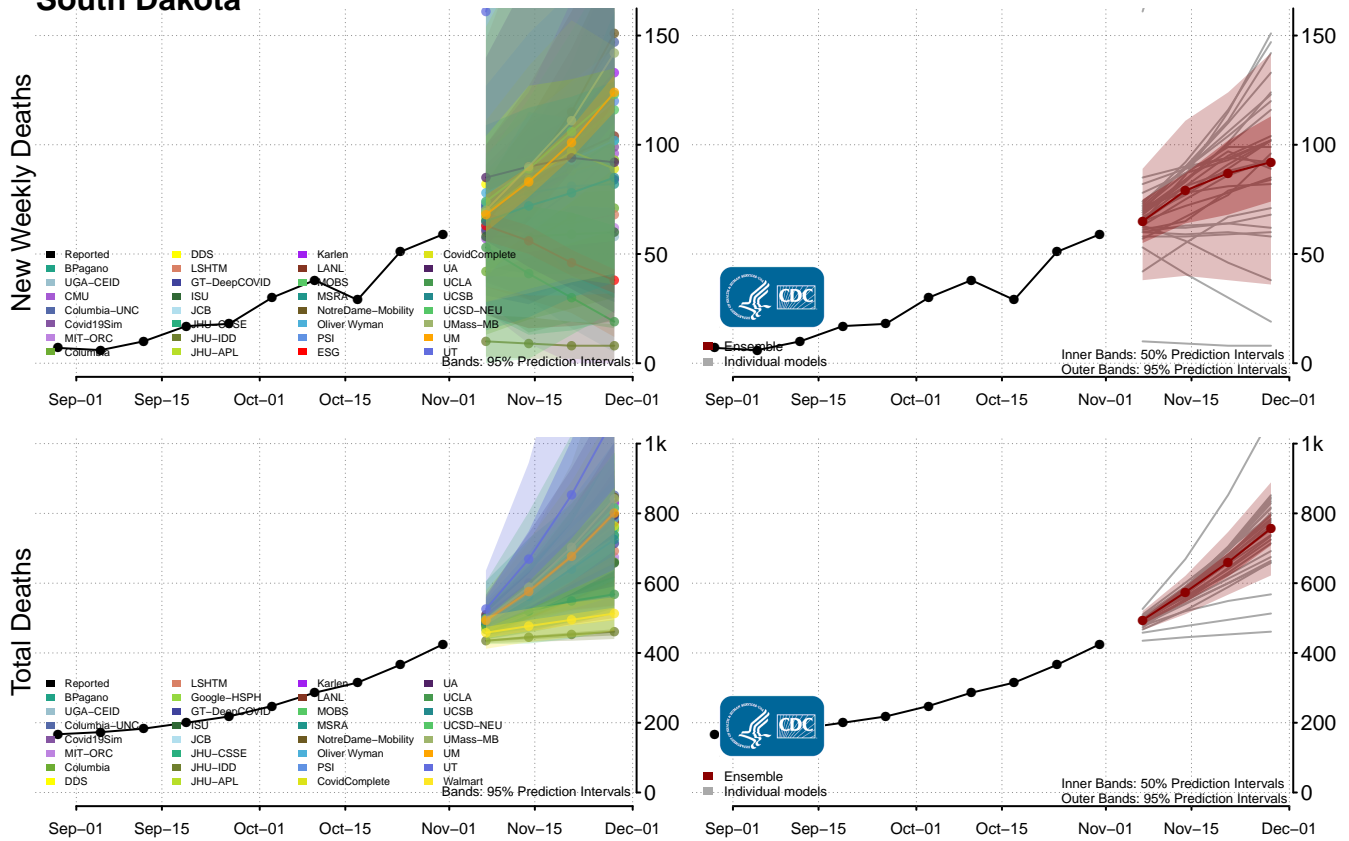


### South Carolina

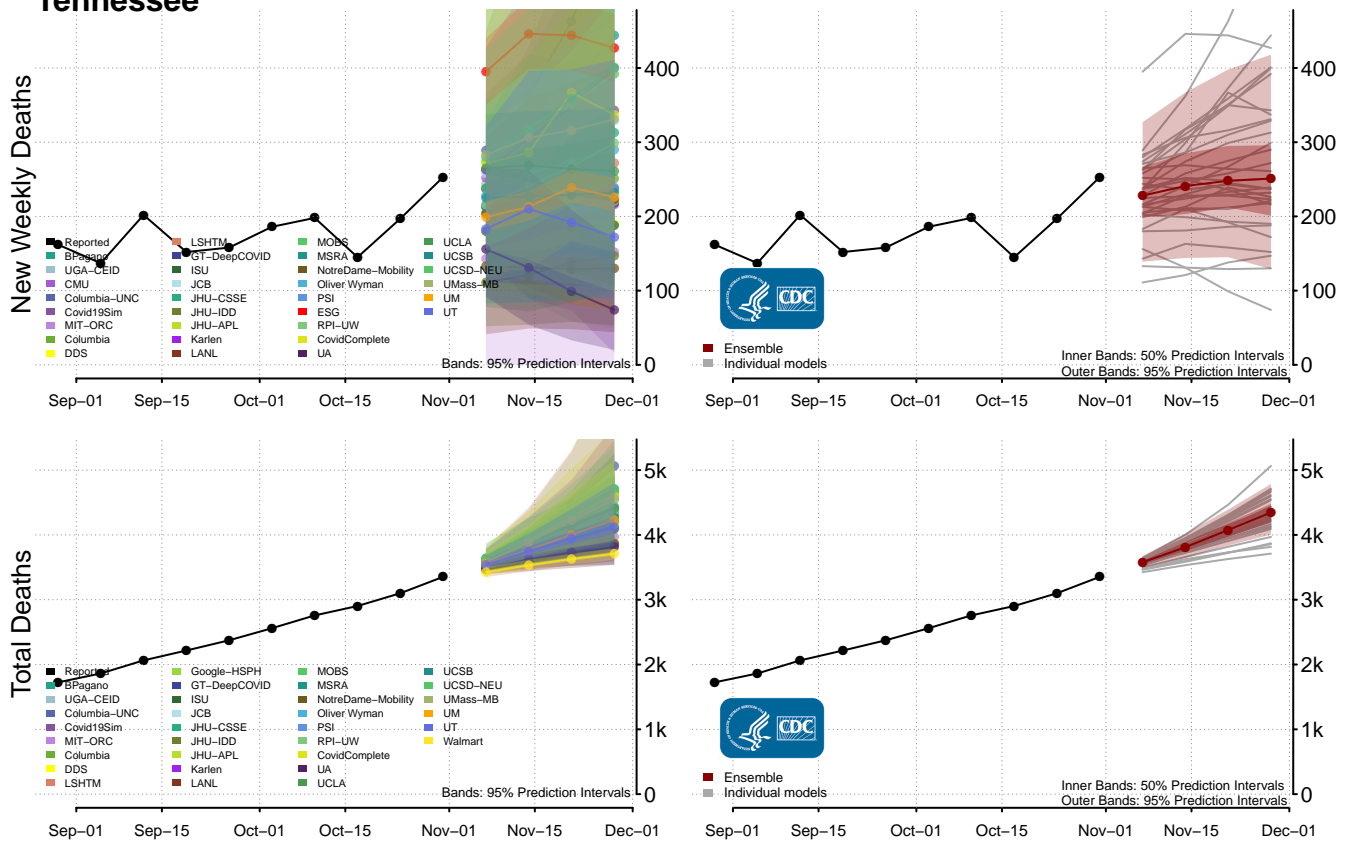


\*\*New weekly deaths may increase in this location over the next four weeks. For these locations, the ensemble forecast indicates a probability of 0.75 or greater that more deaths will be reported in week four of the forecast than in the last reported week.

### South Dakota\*\*

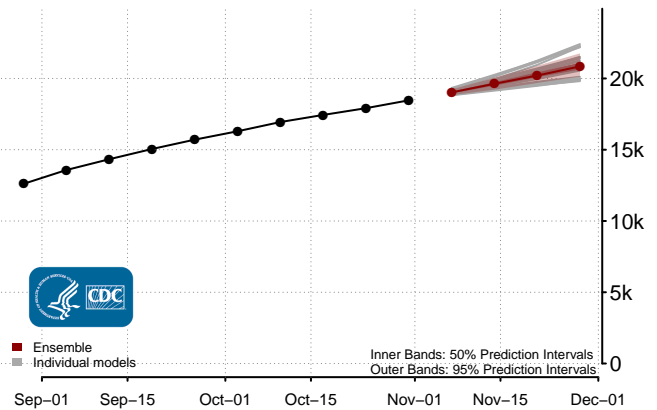
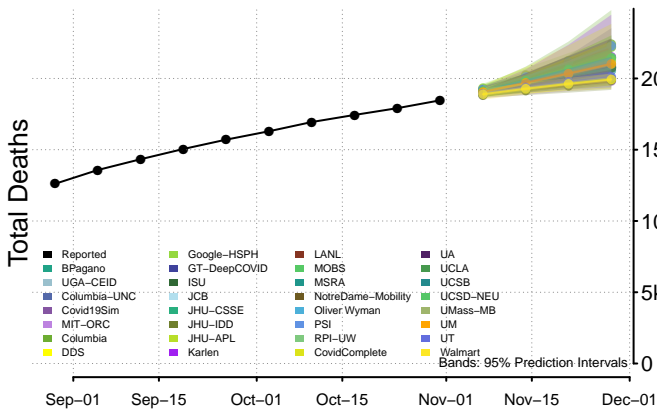
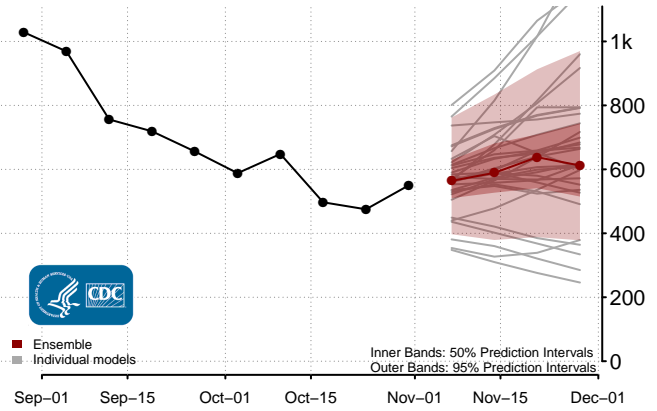
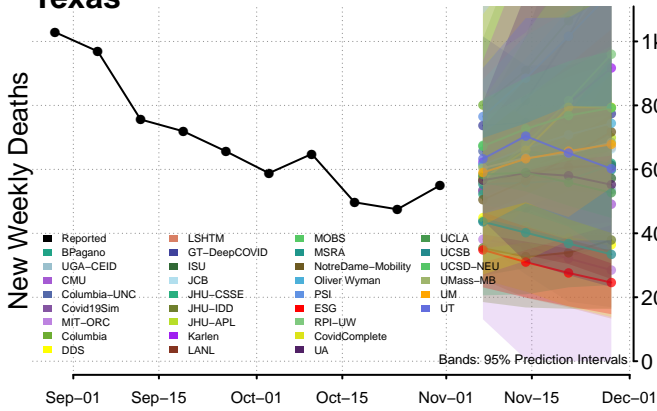


### Tennessee

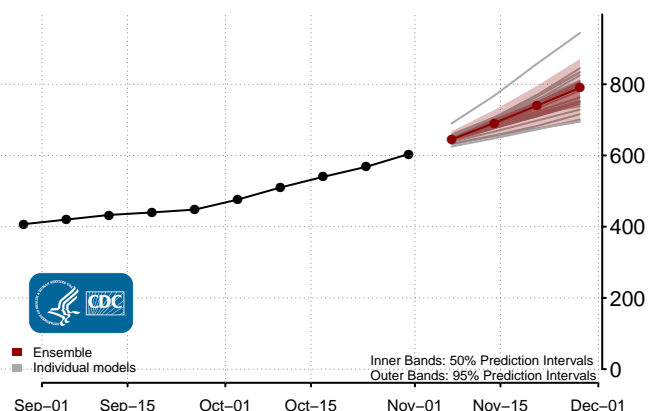
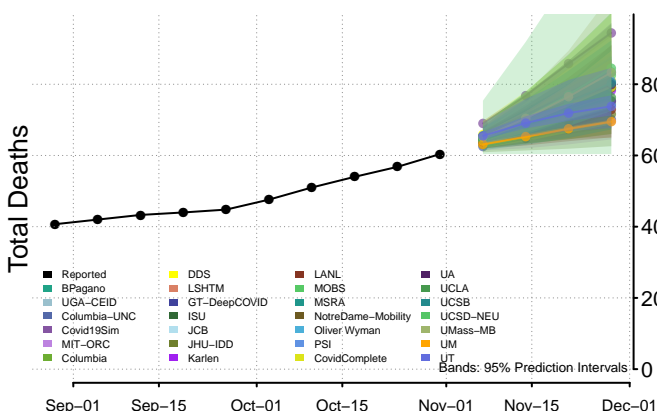
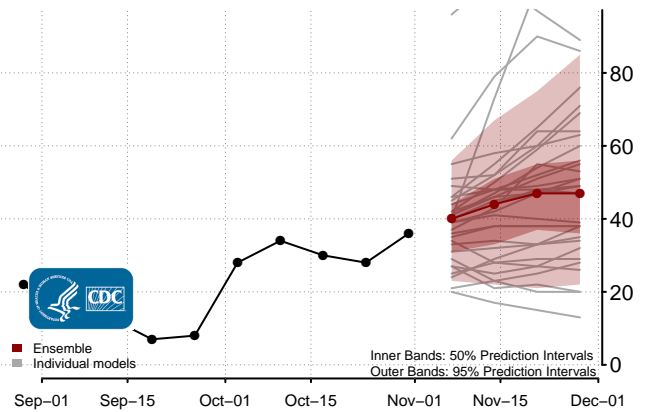
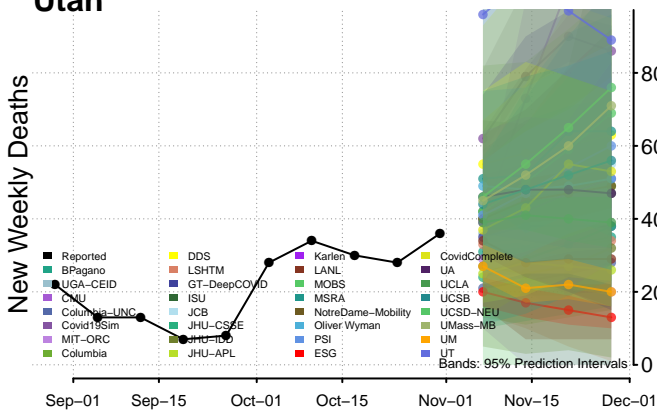


\*\*New weekly deaths may increase in this location over the next four weeks. For these locations, the ensemble forecast indicates a probability of 0.75 or greater that more deaths will be reported in week four of the forecast than in the last reported week.

### Texas

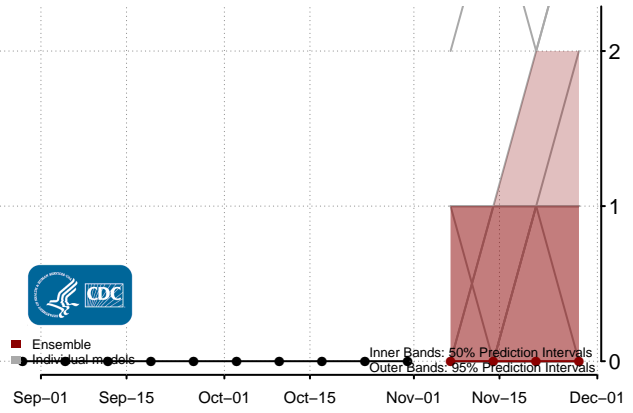
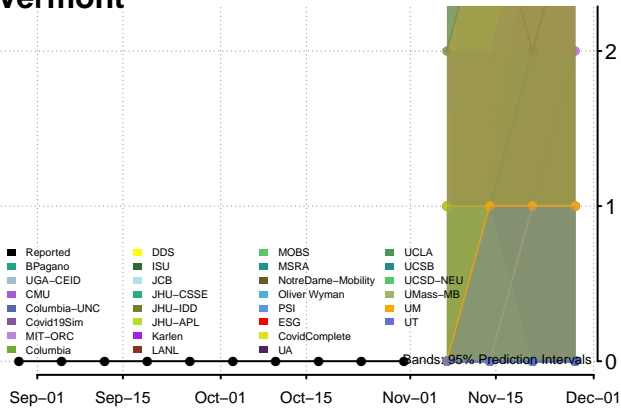


### Utah

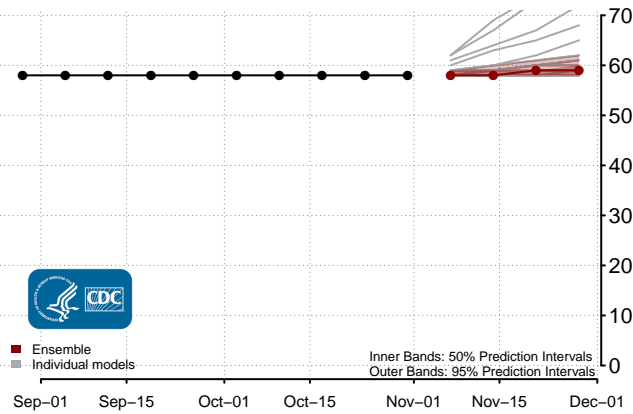
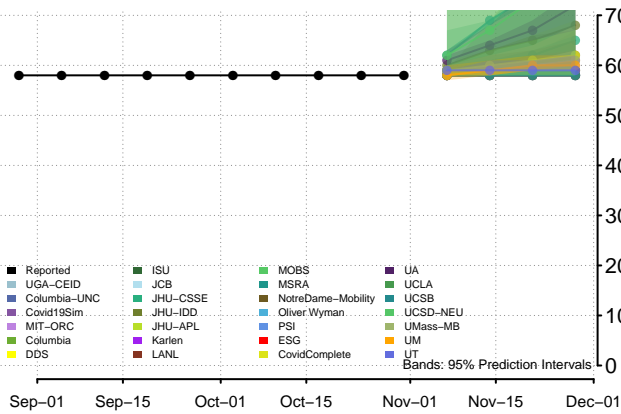


### Vermont

New Weekly Deaths

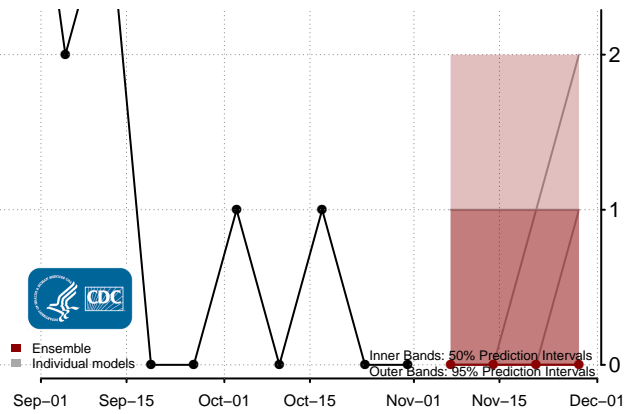
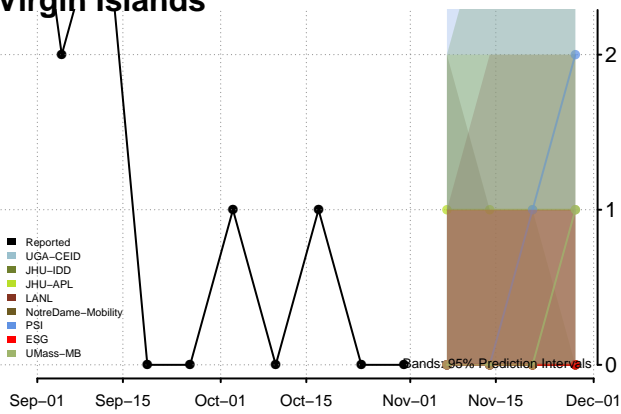


Total Deaths

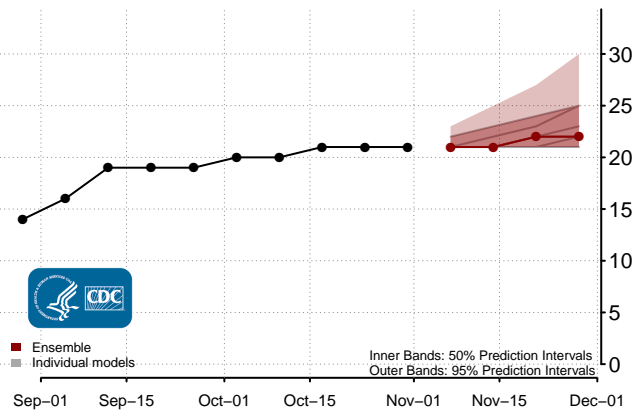
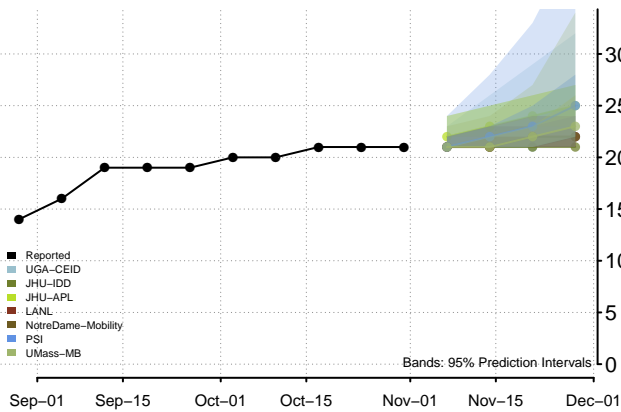


### Virgin Islands

New Weekly Deaths

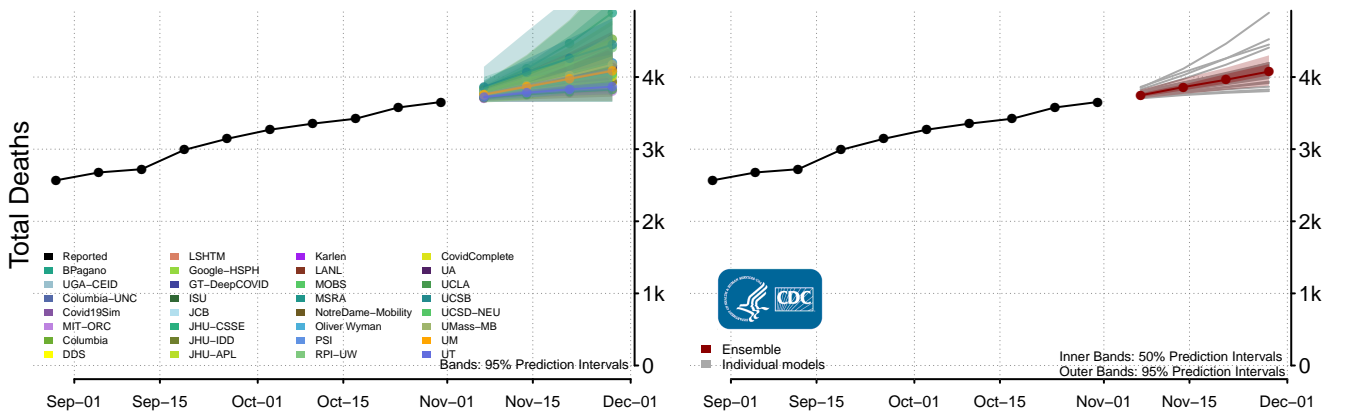
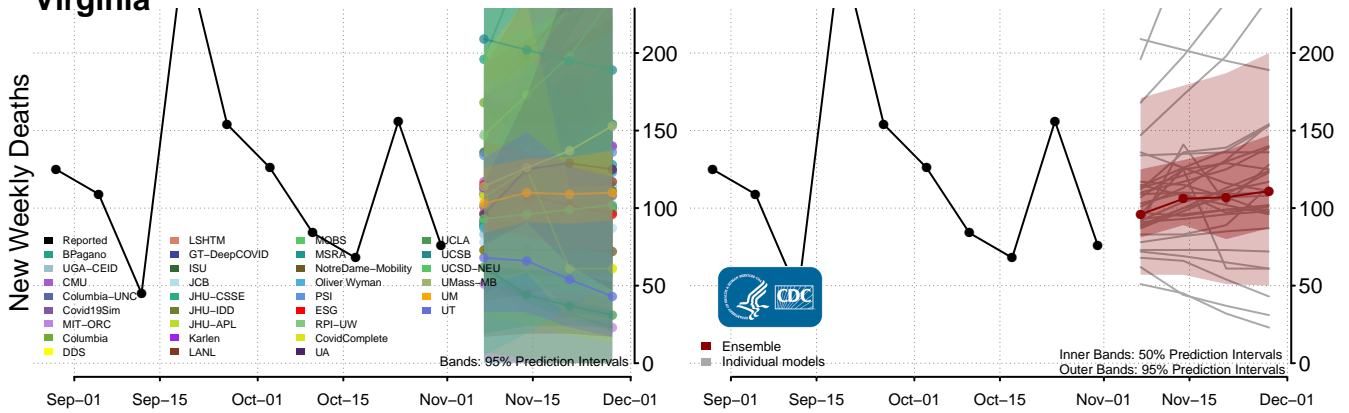


Total Deaths

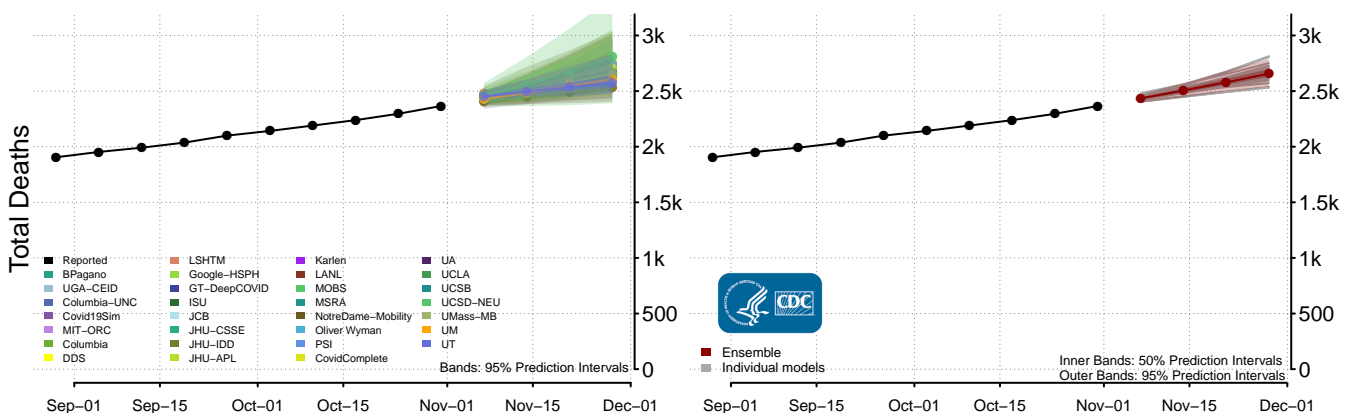
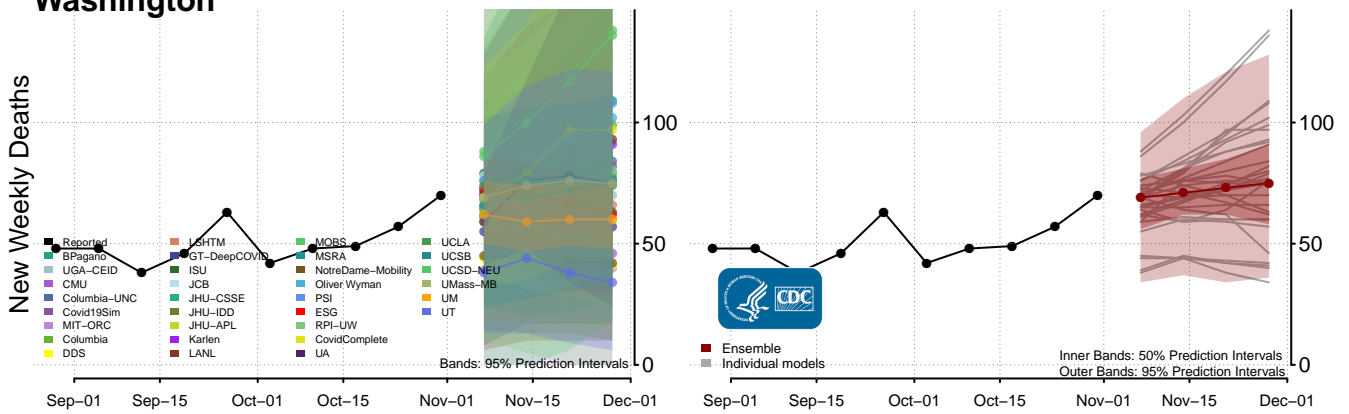




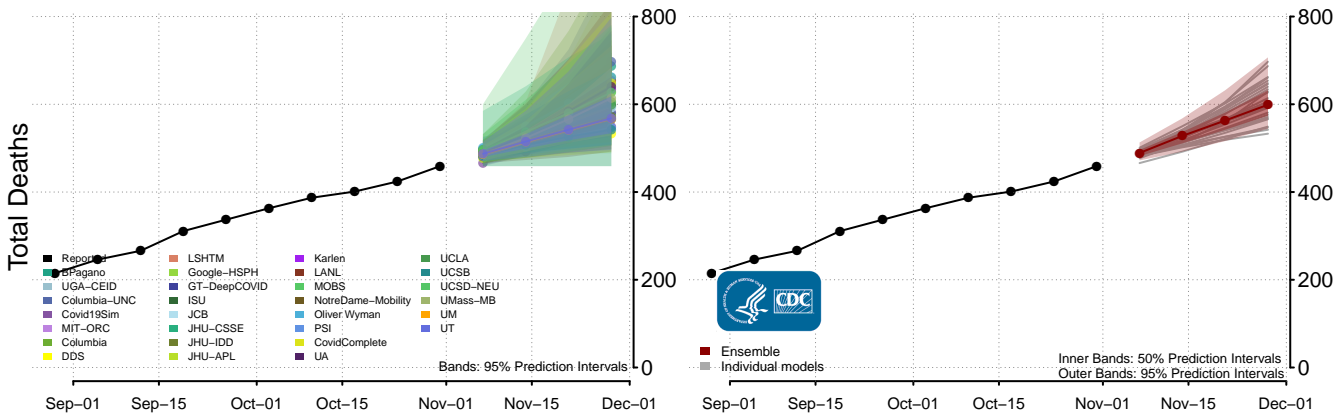
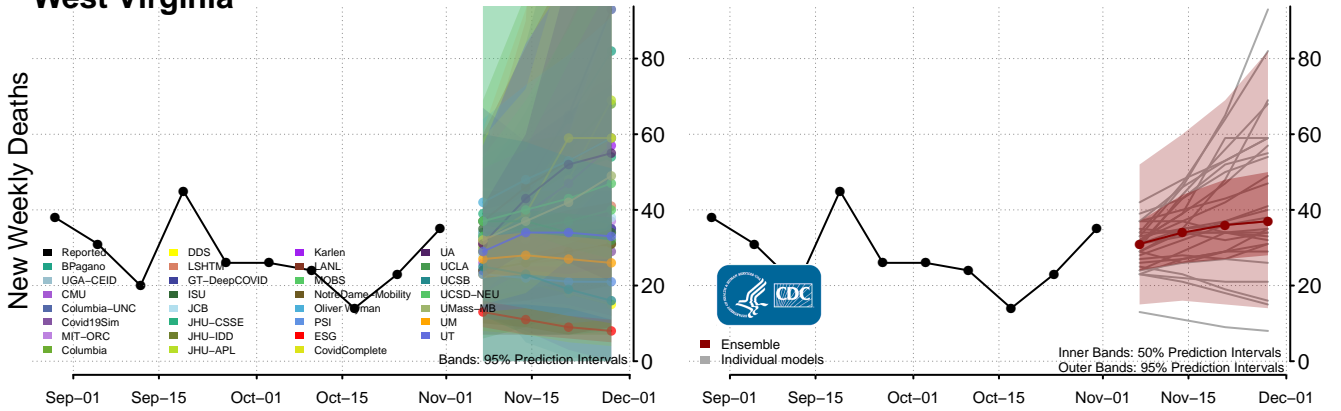
### Virginia



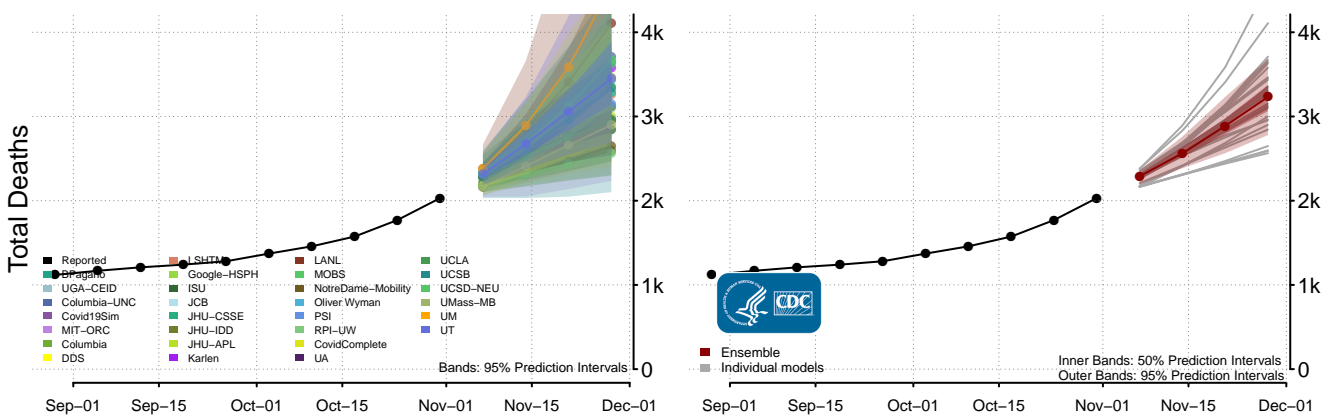
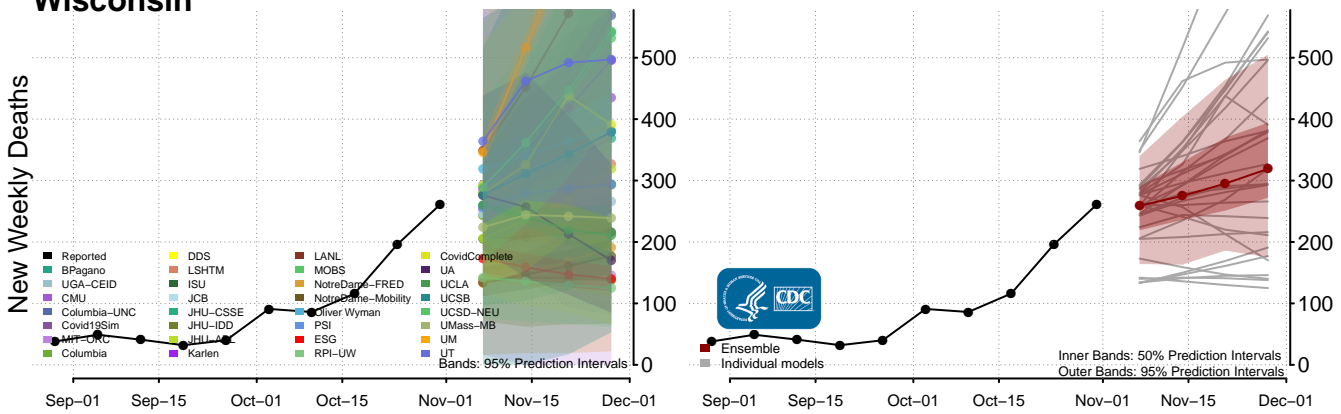
### Washington



### West Virginia



### Wisconsin\*\*



\*\*New weekly deaths may increase in this location over the next four weeks. For these locations, the ensemble forecast indicates a probability of 0.75 or greater that more deaths will be reported in week four of the forecast than in the last reported week.

# Wyoming

