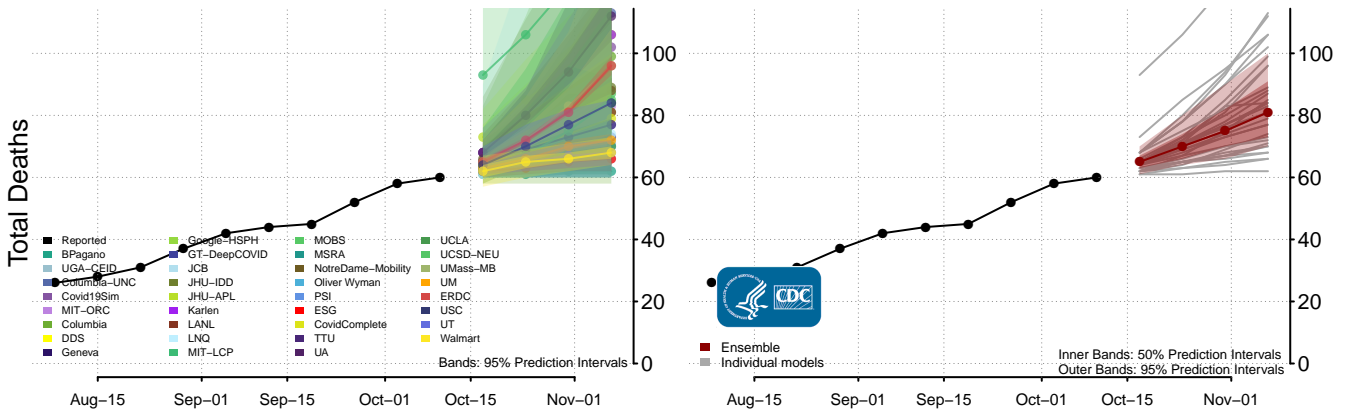
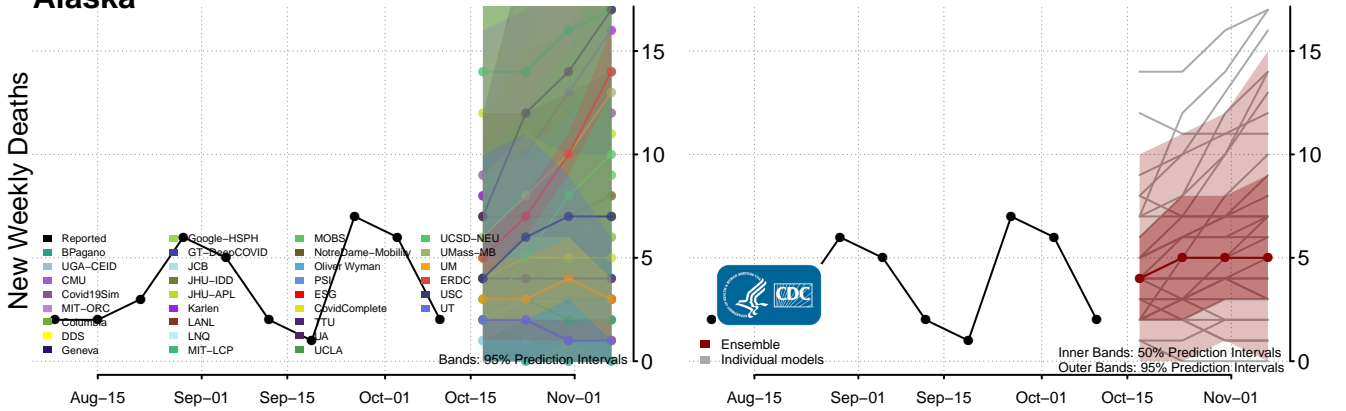
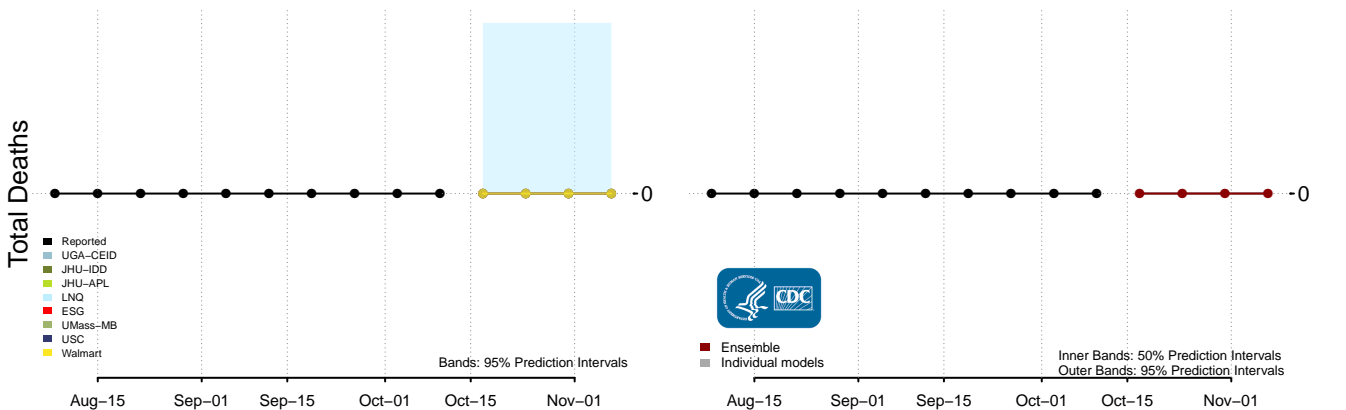
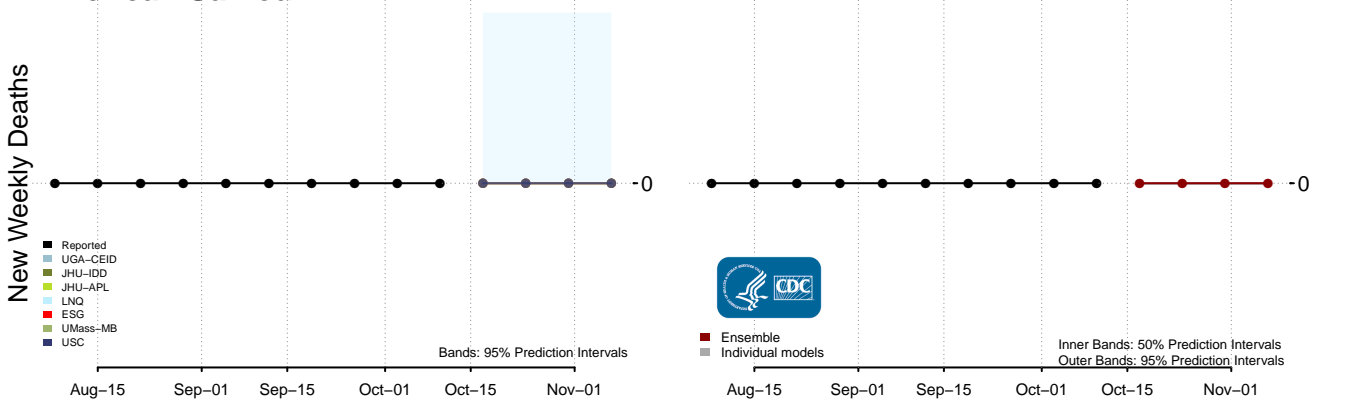


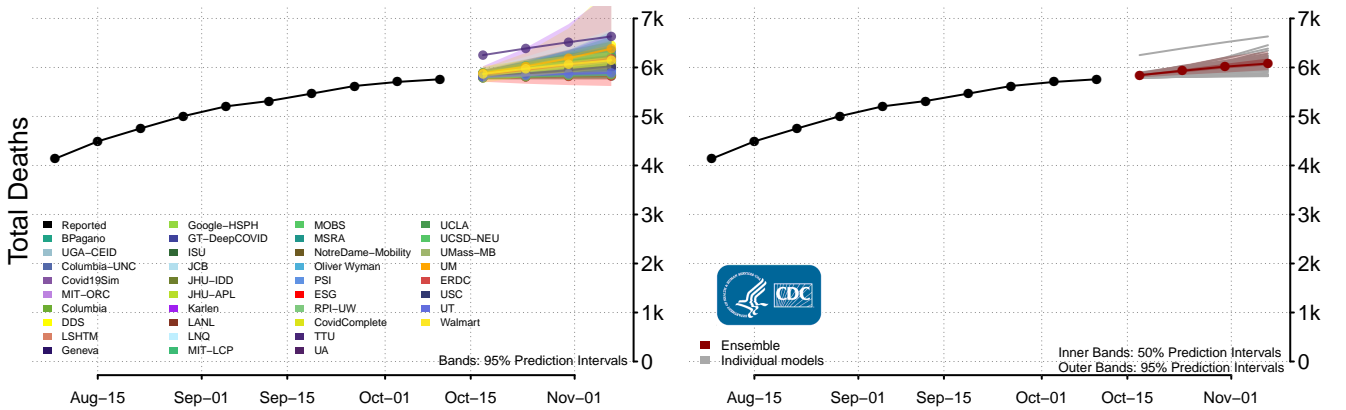
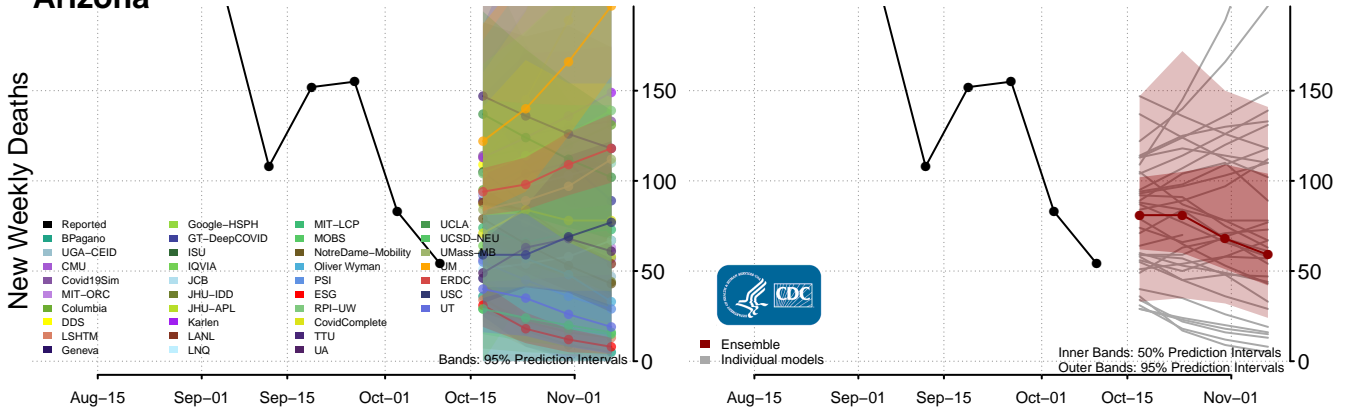
Alaska



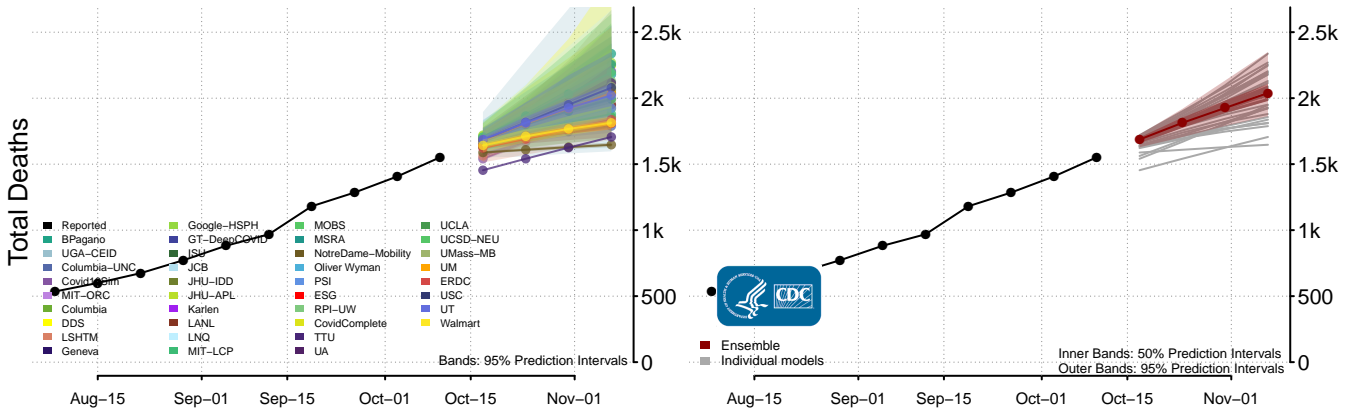
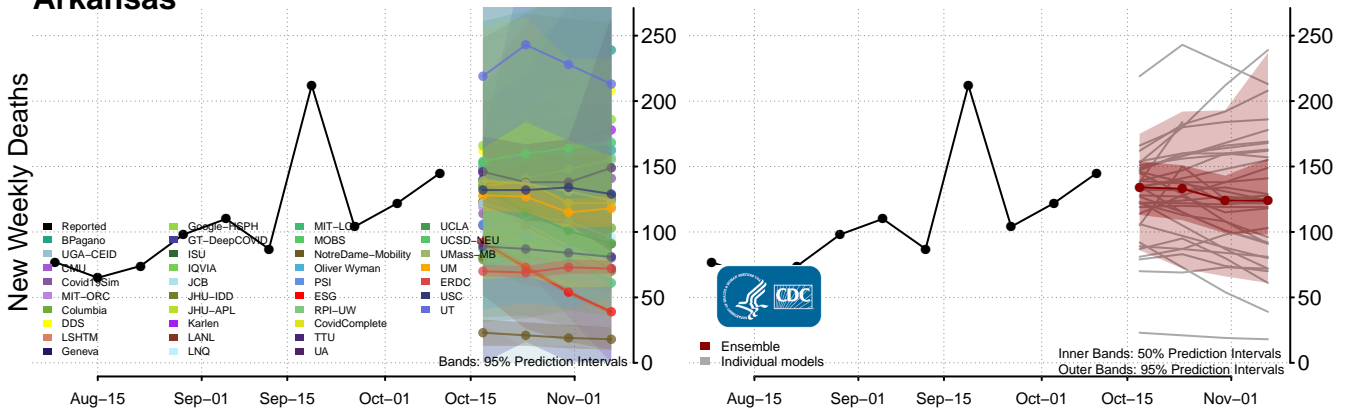
American Samoa



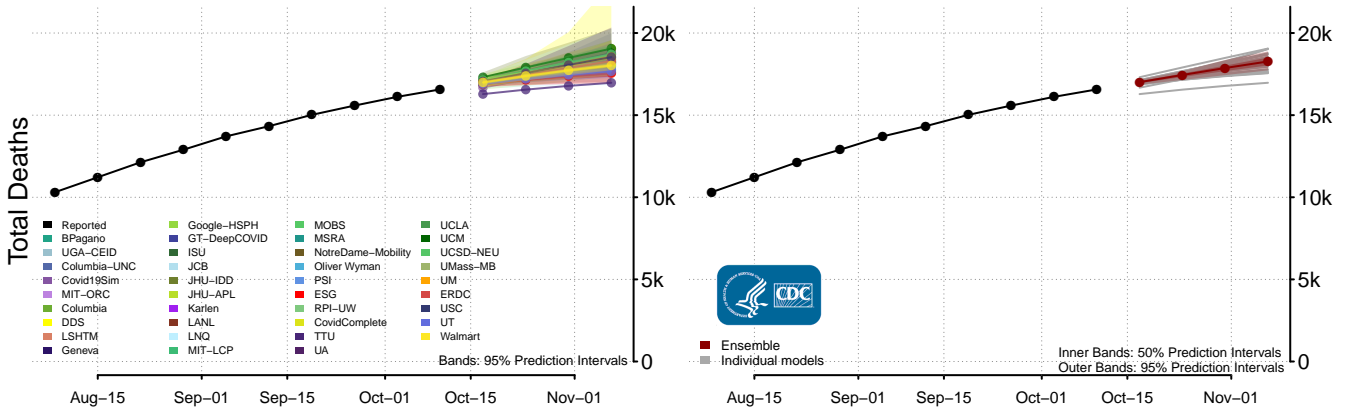
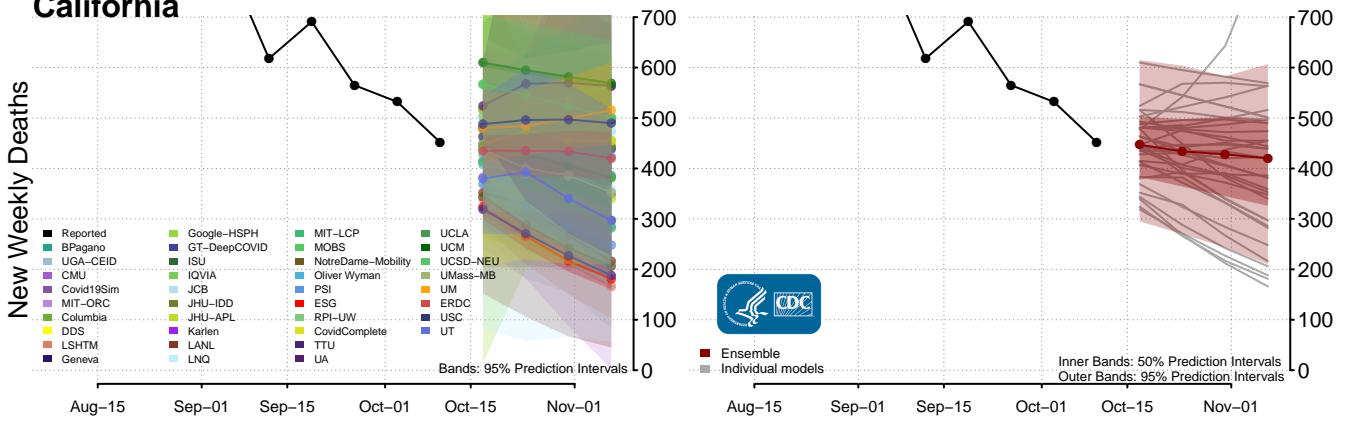
Arizona



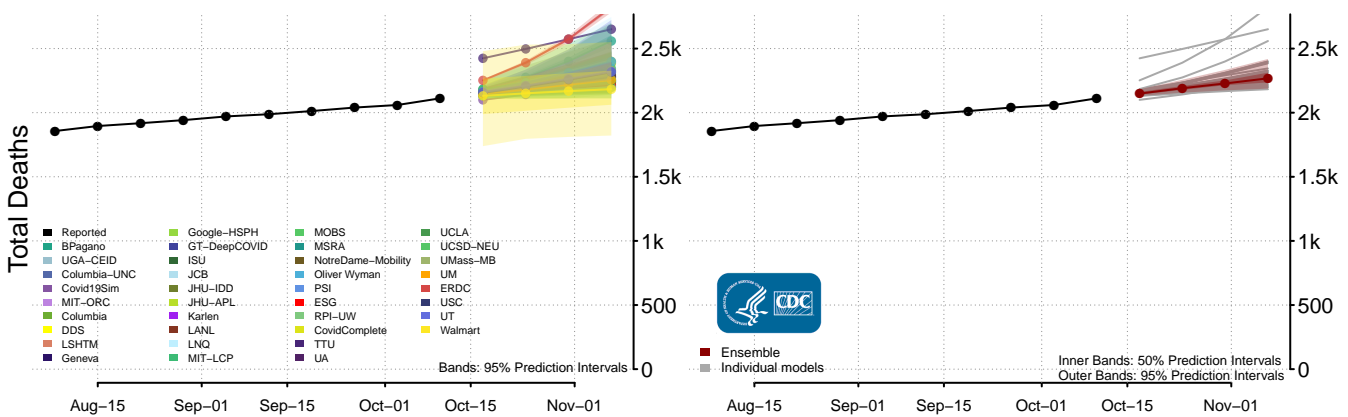
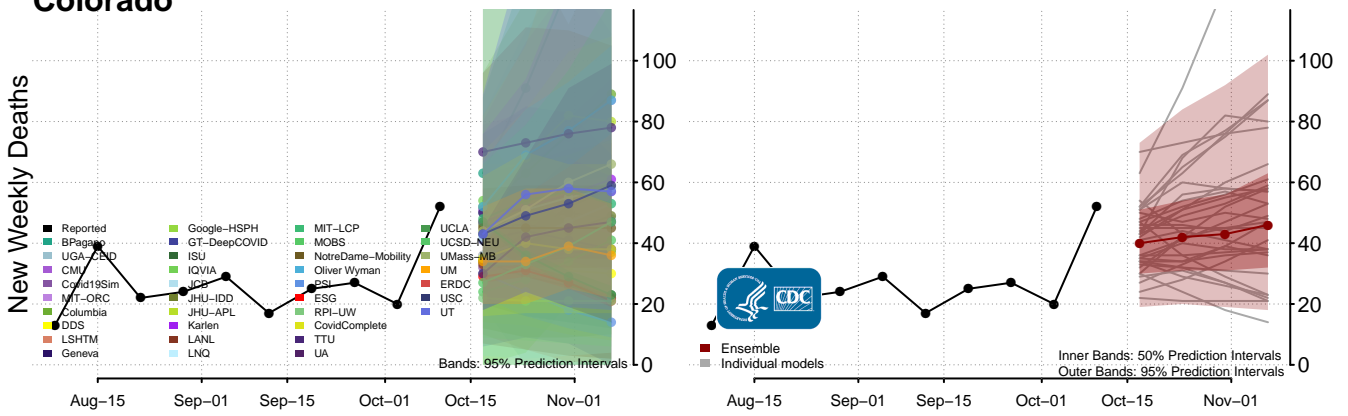
Arkansas



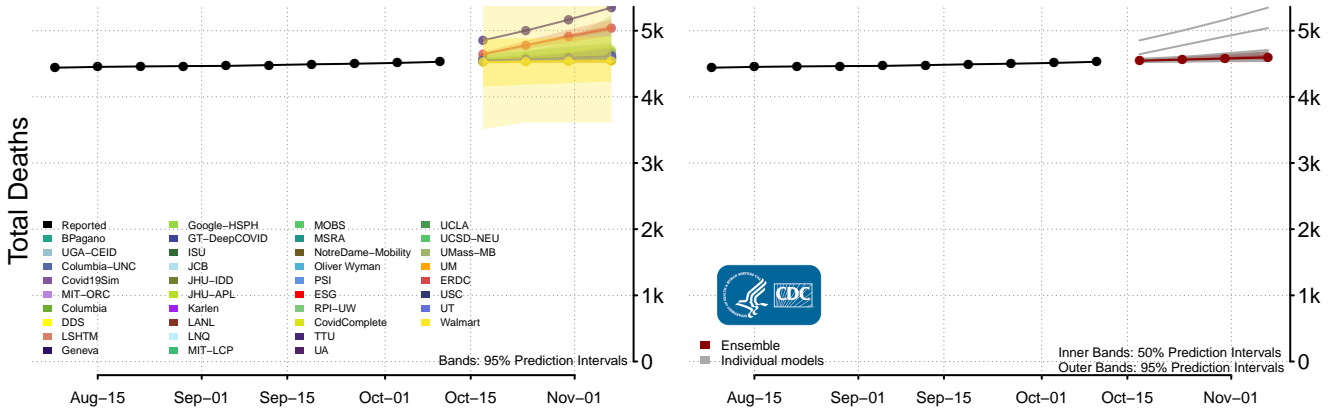
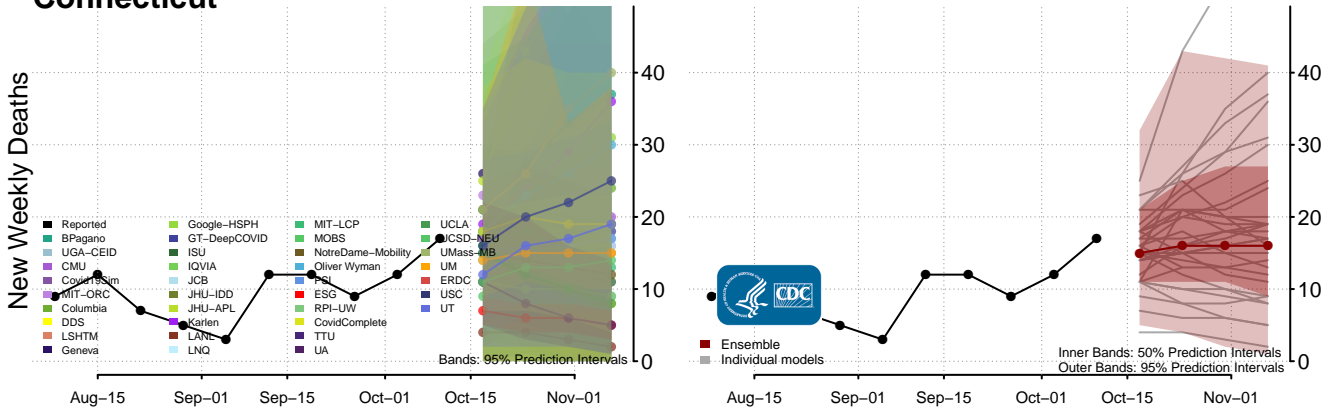
California



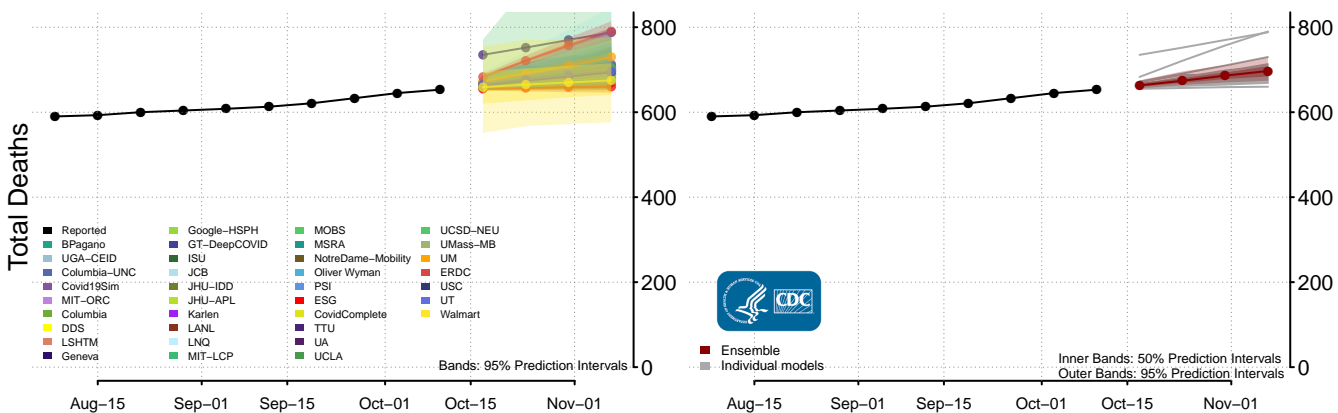
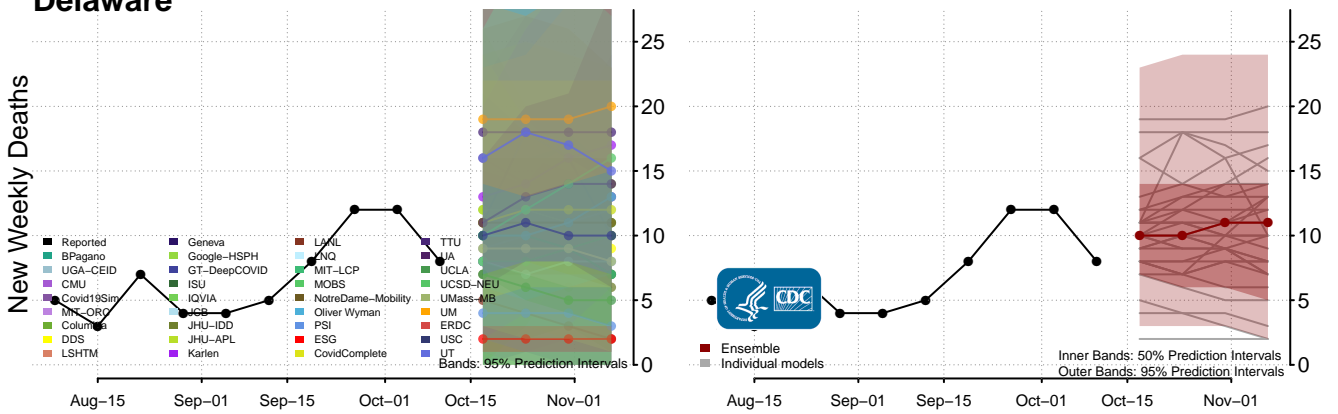
Colorado



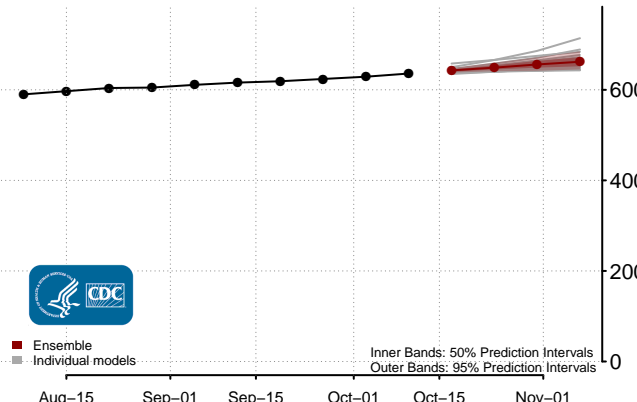
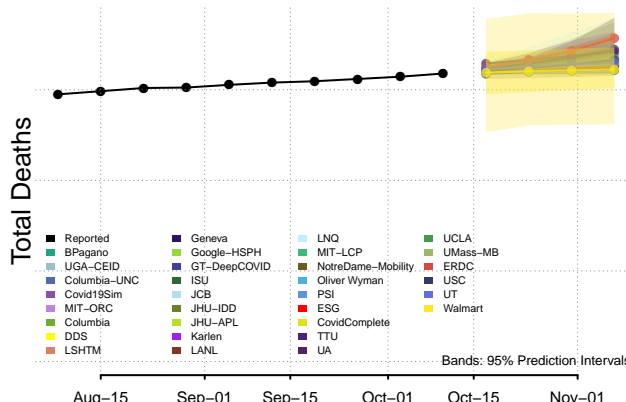
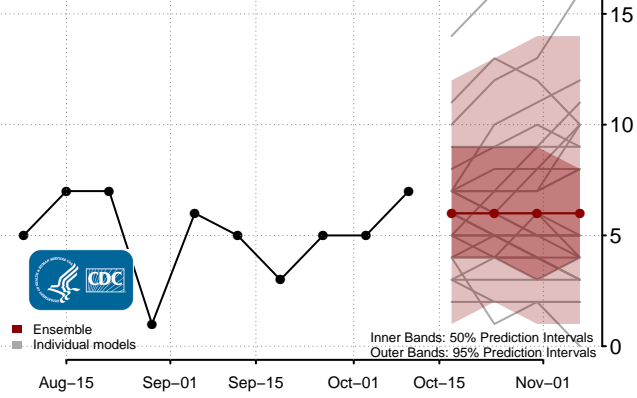
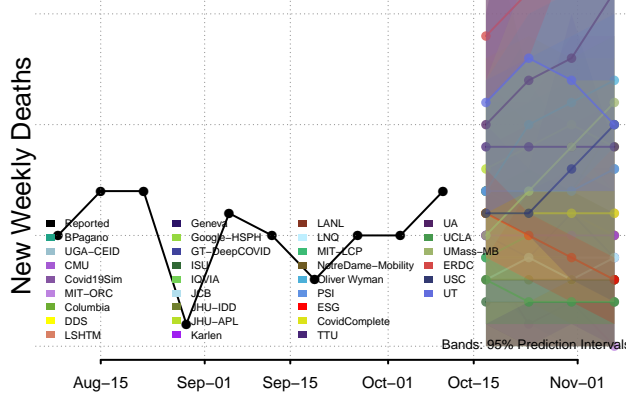
Connecticut



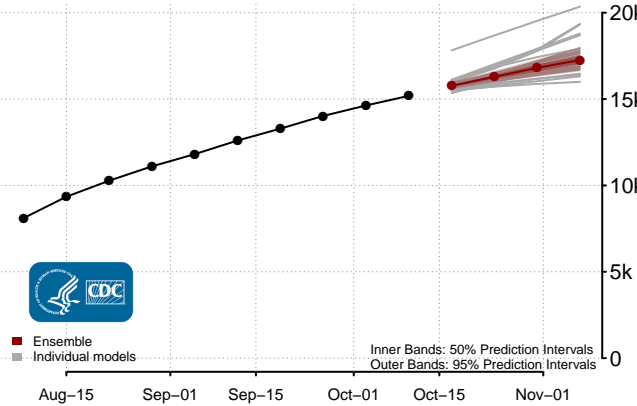
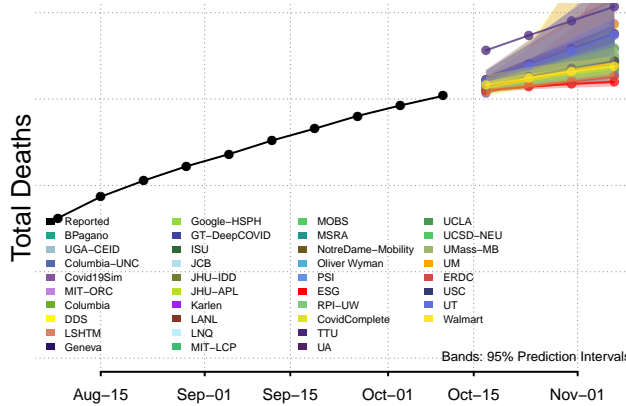
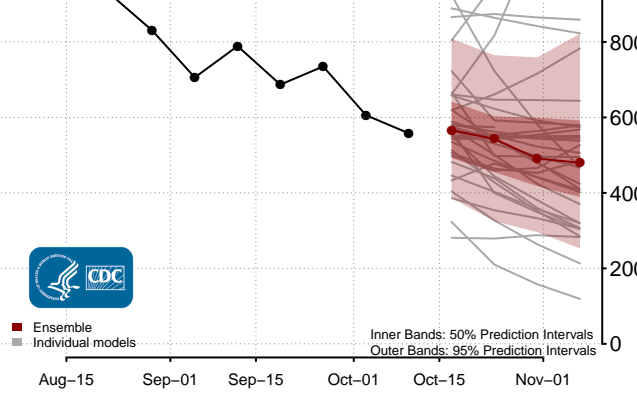
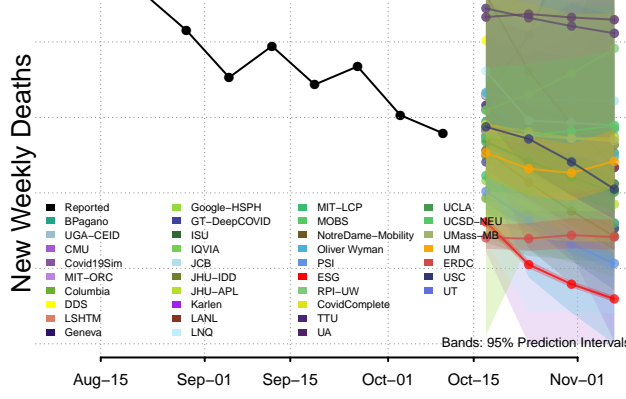
Delaware

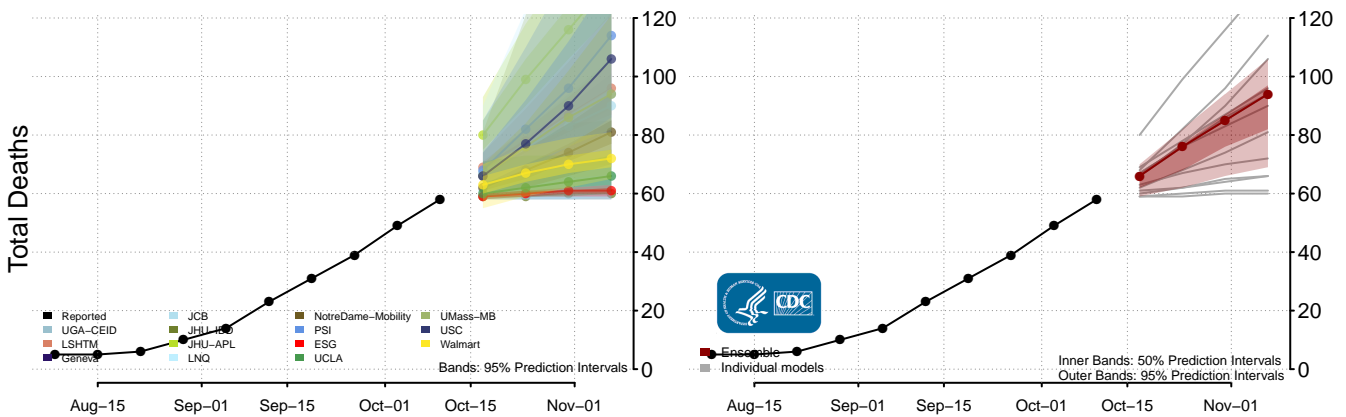
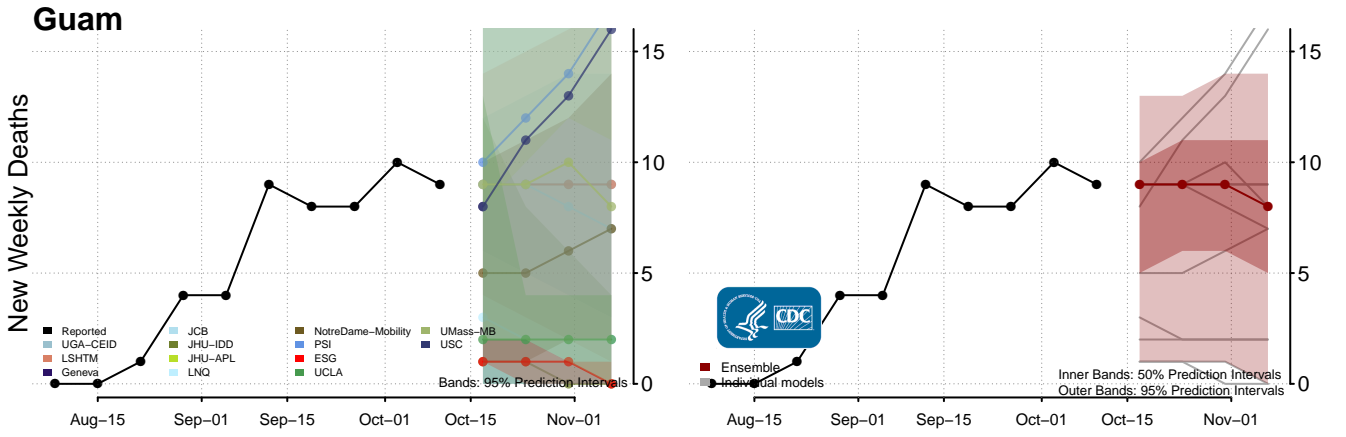
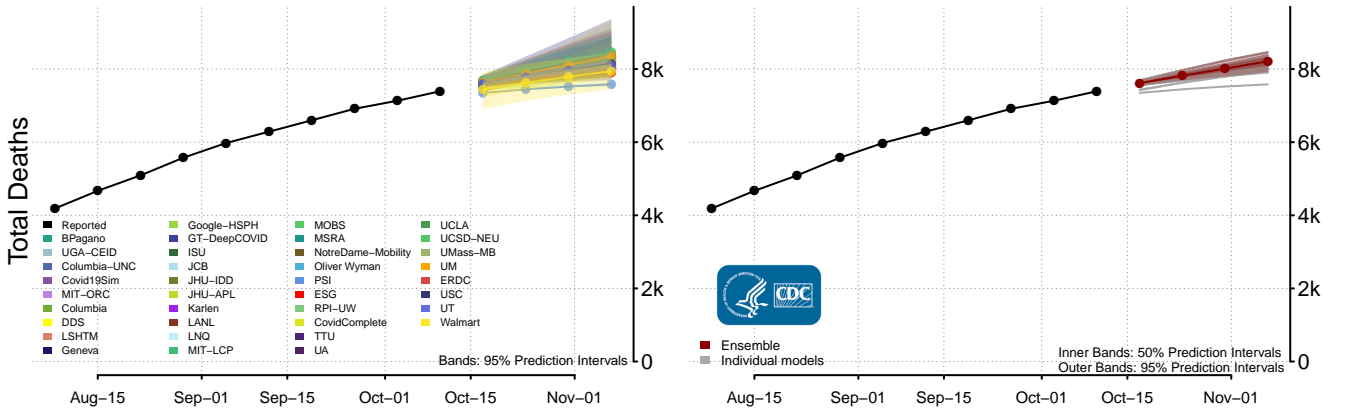
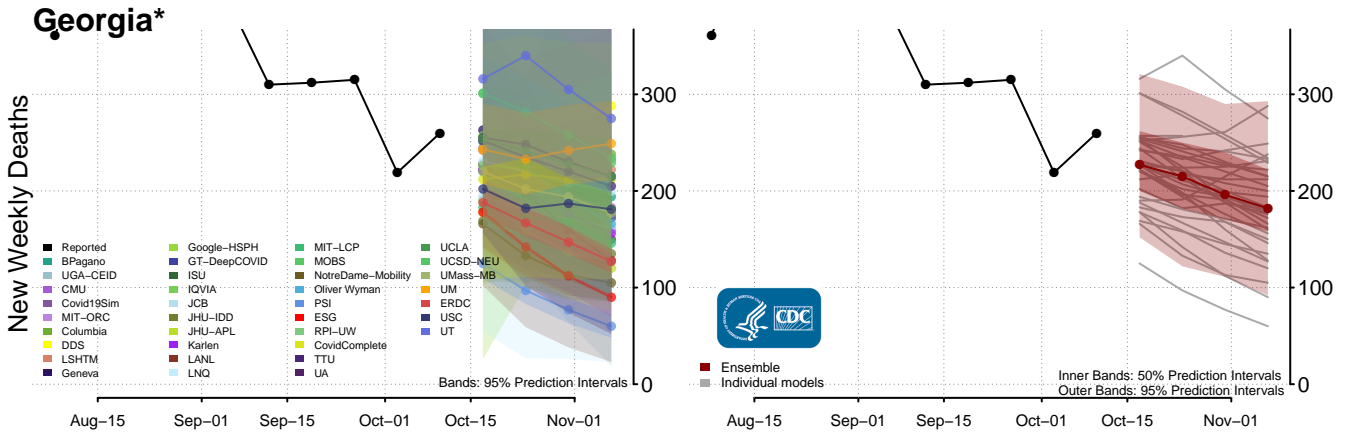


District of Columbia



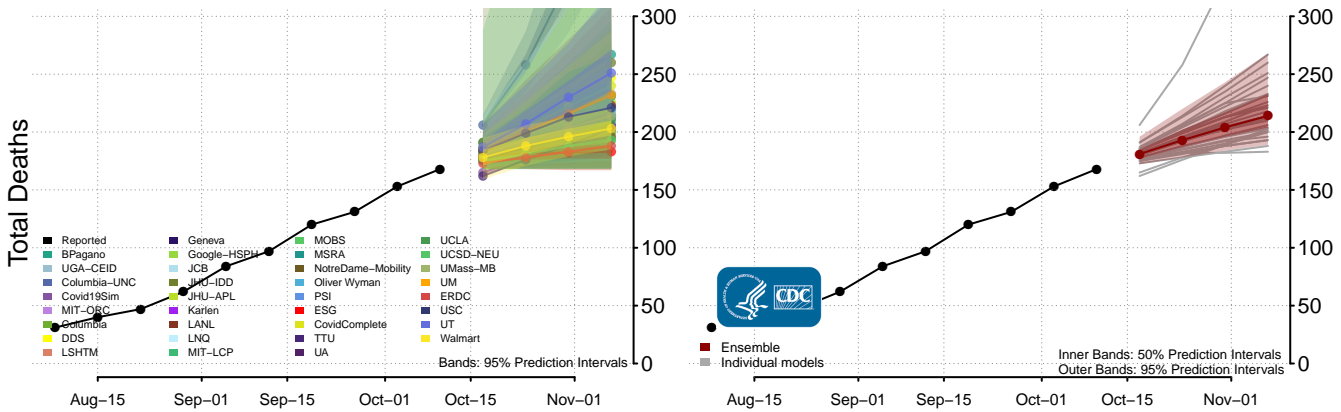
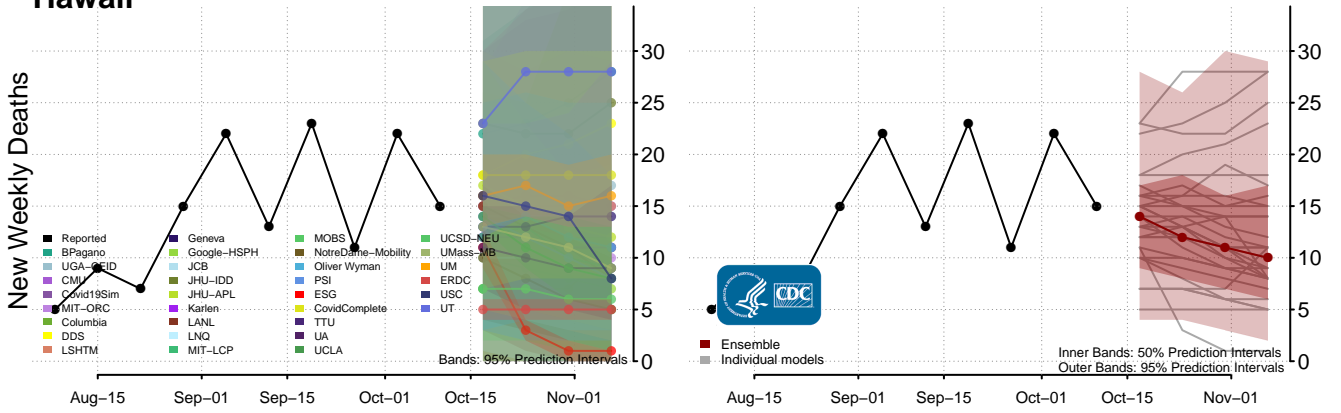
Florida



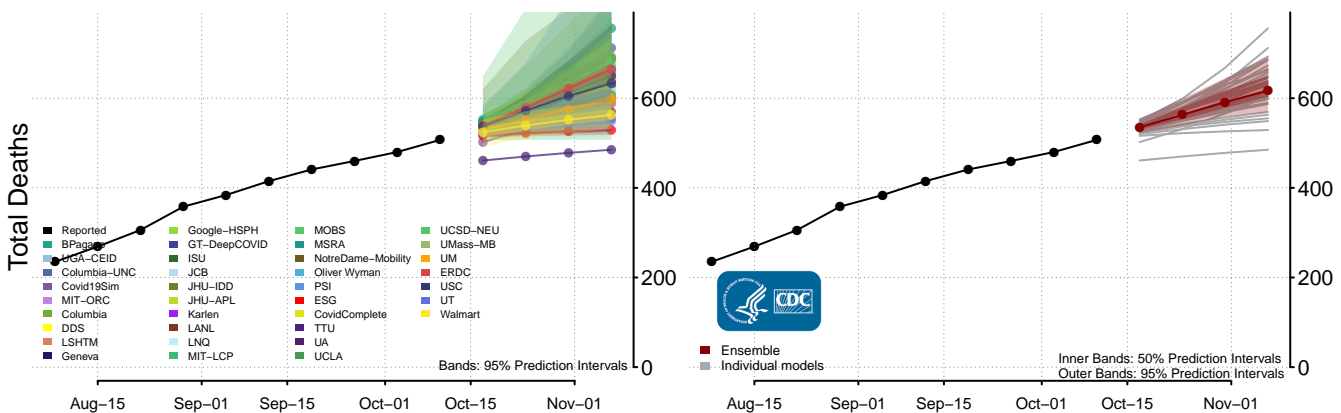
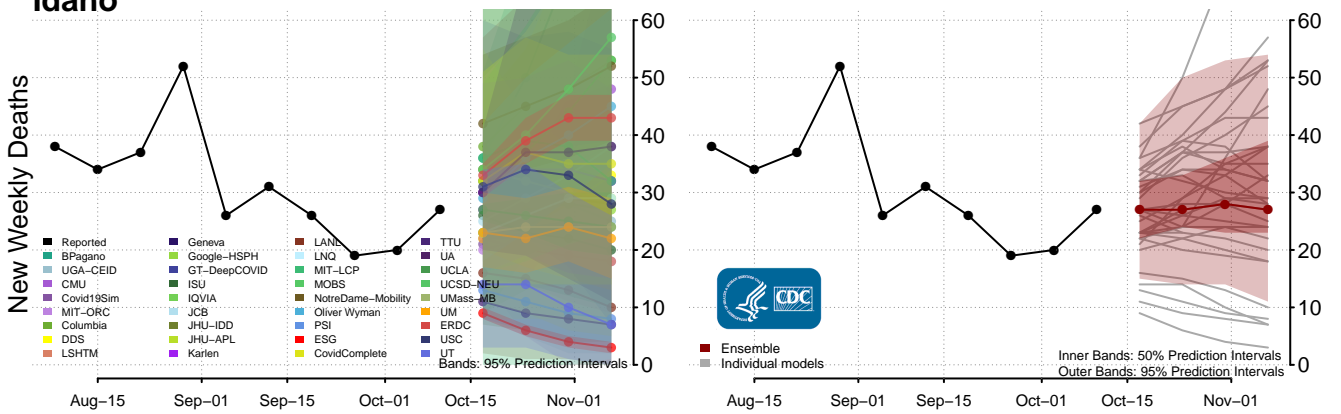


*New weekly deaths may decrease in this location over the next four weeks. For these locations, the ensemble forecast indicates a probability of 0.75 or greater that fewer deaths will be reported in week four of the forecast than in the last reported week.

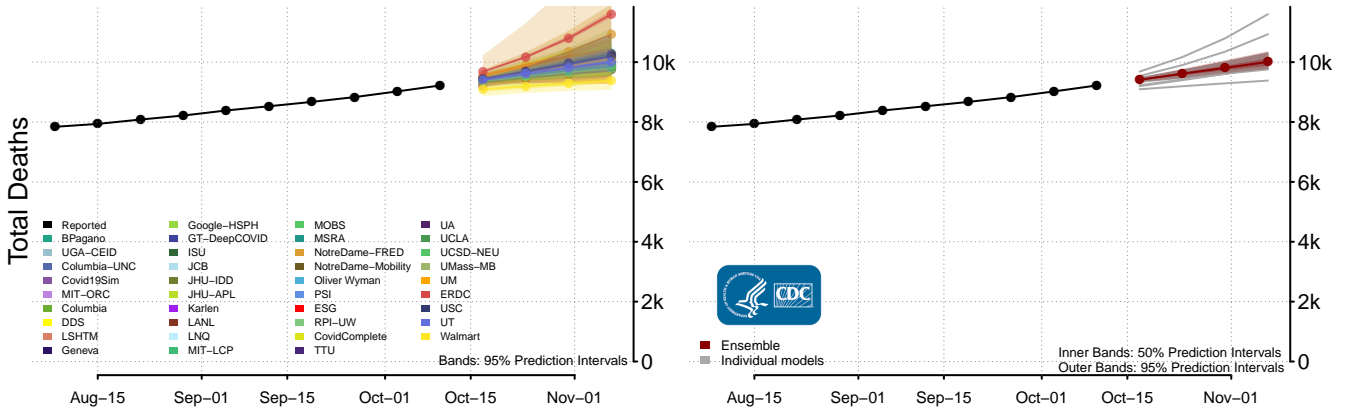
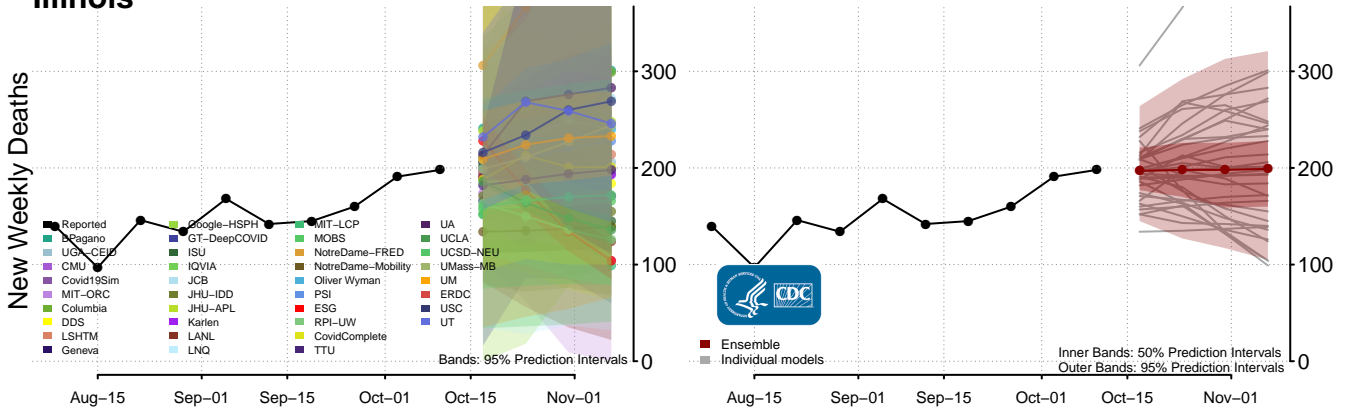
Hawaii



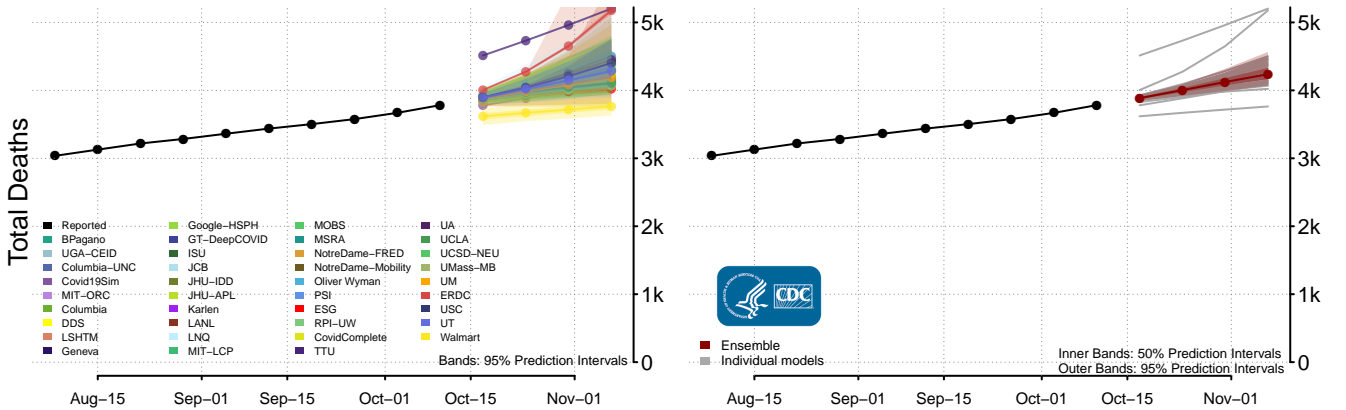
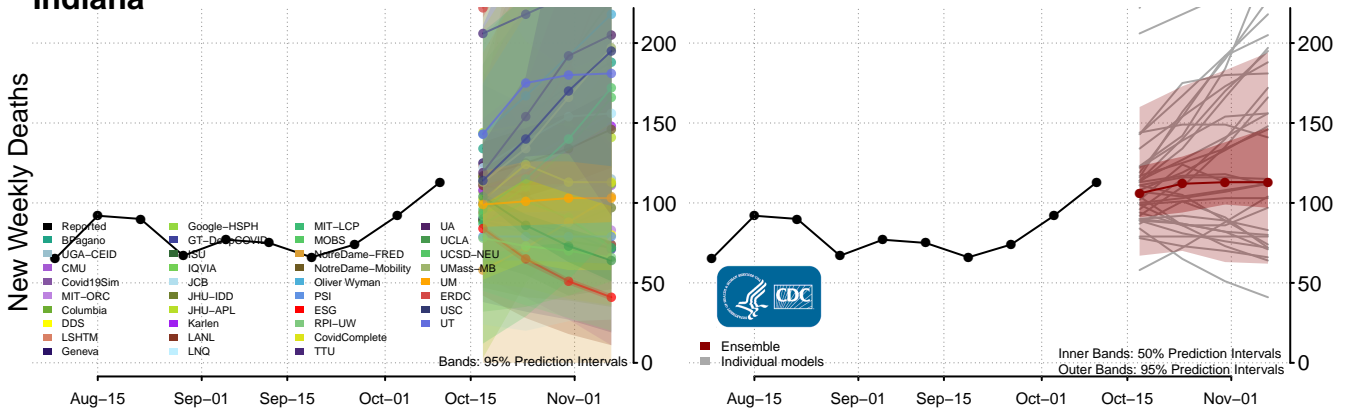
Idaho



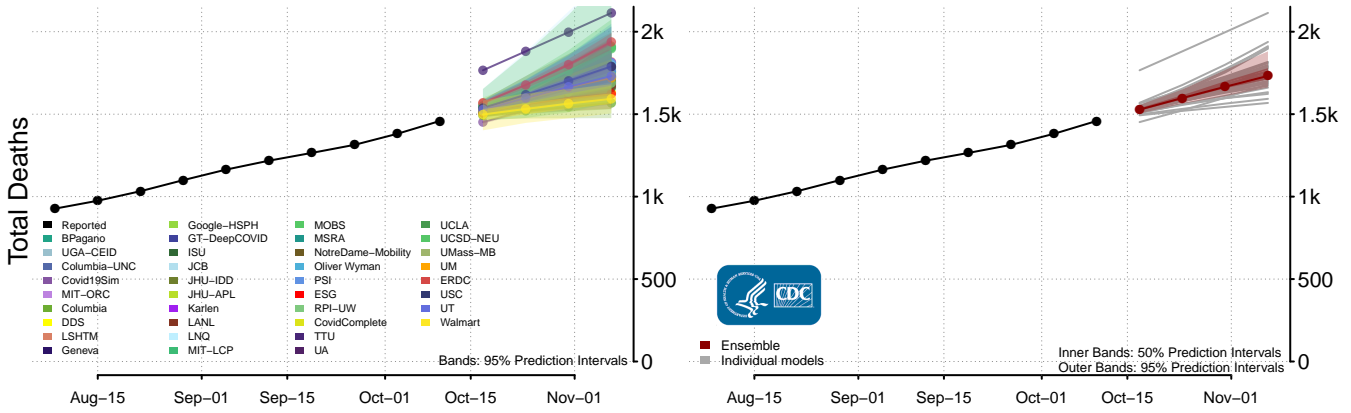
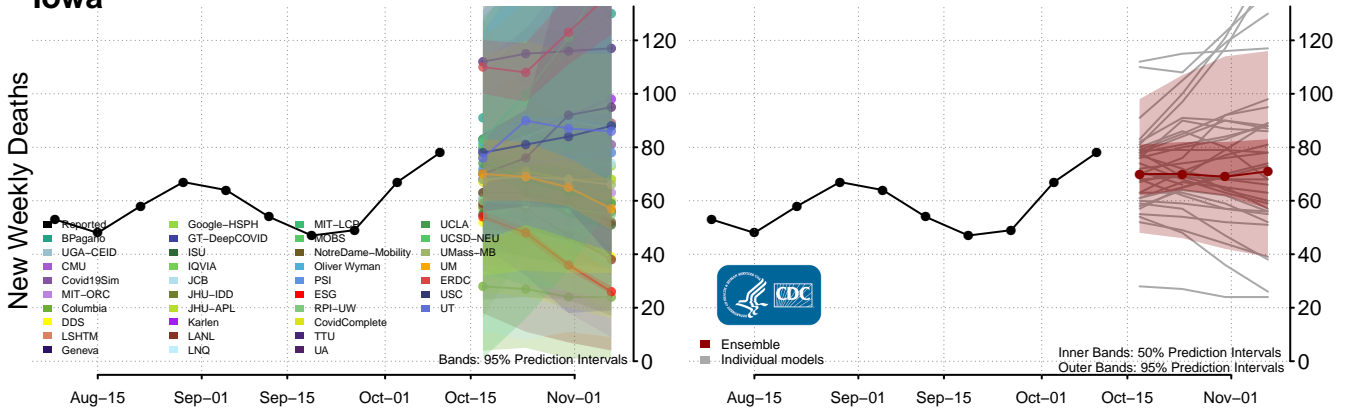
Illinois



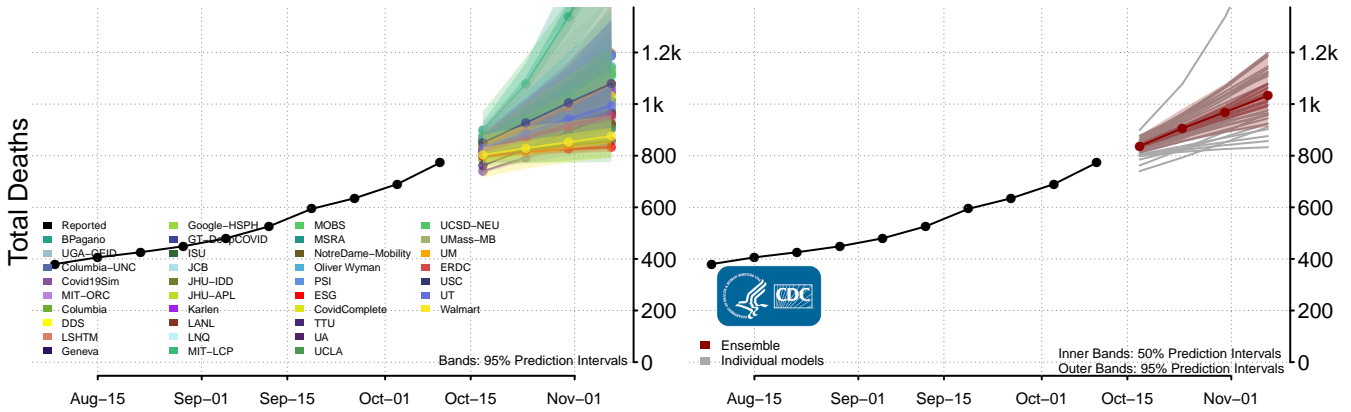
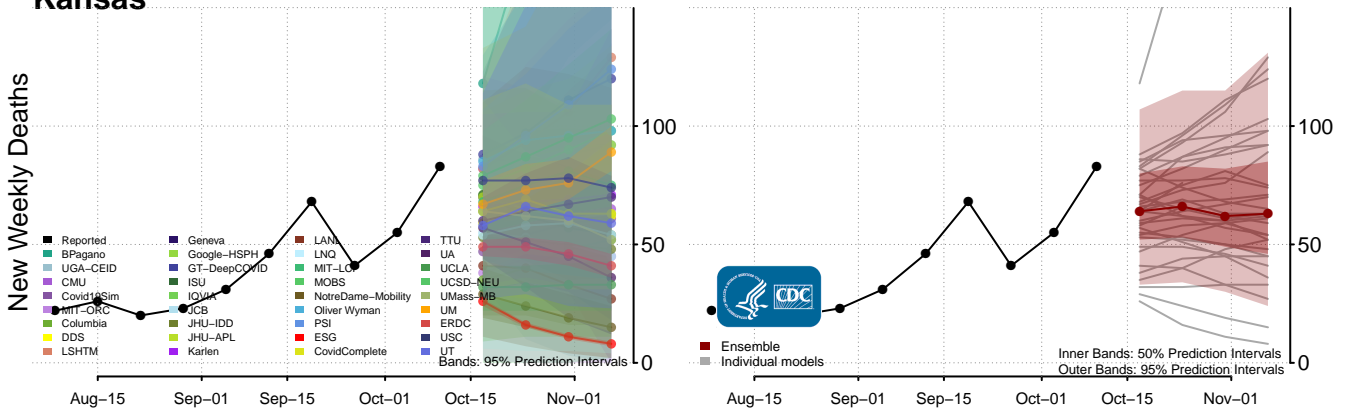
Indiana



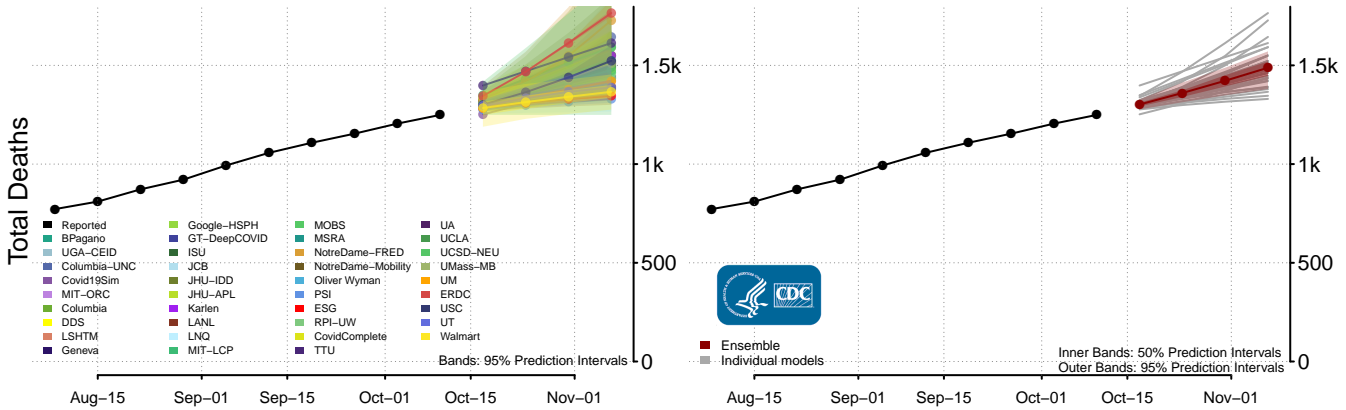
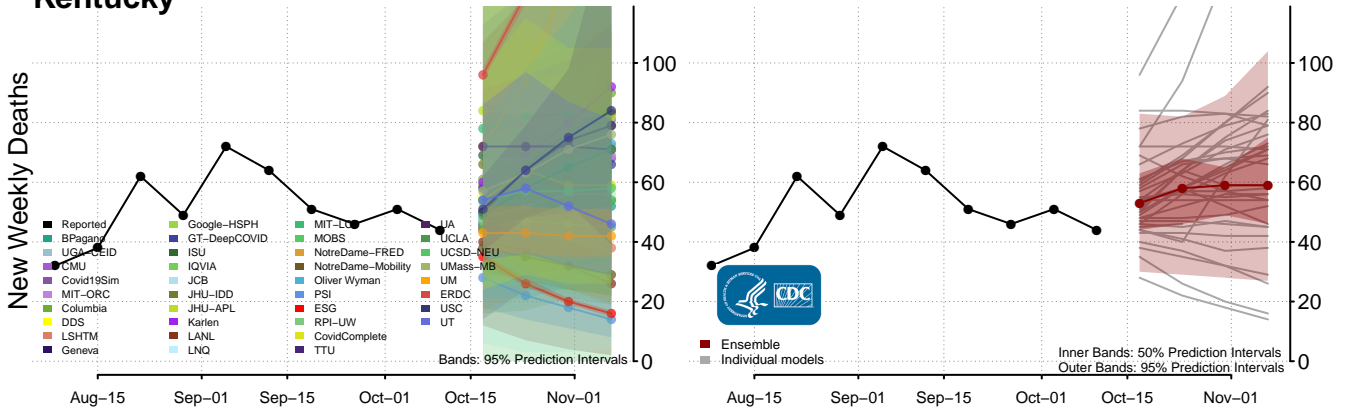
Iowa



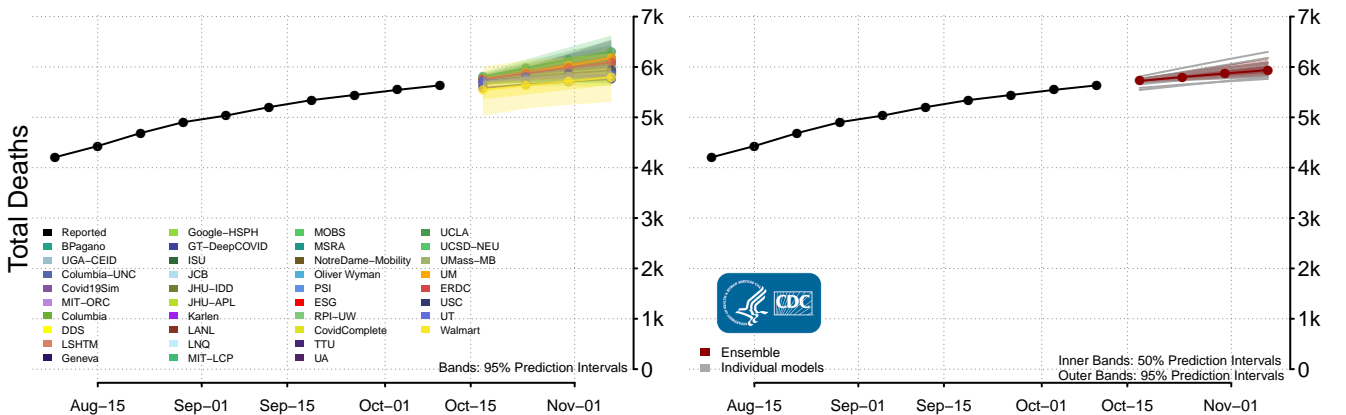
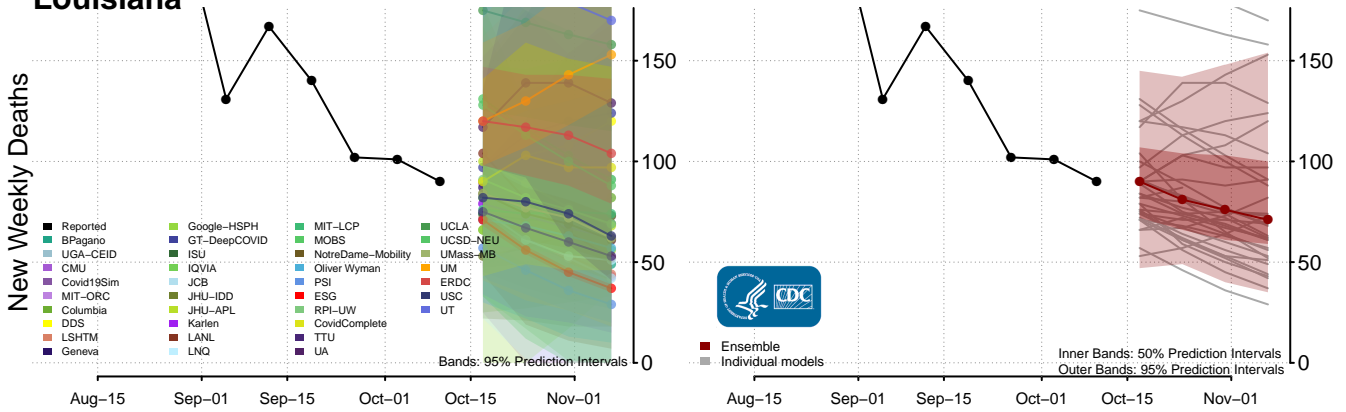
Kansas



Kentucky**



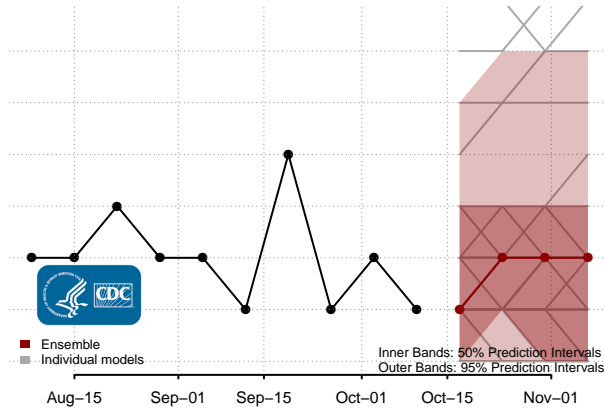
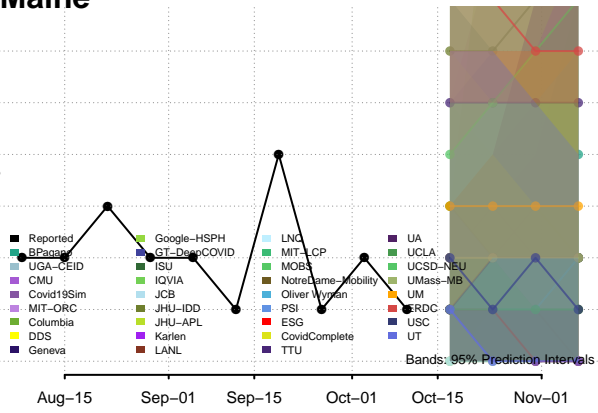
Louisiana



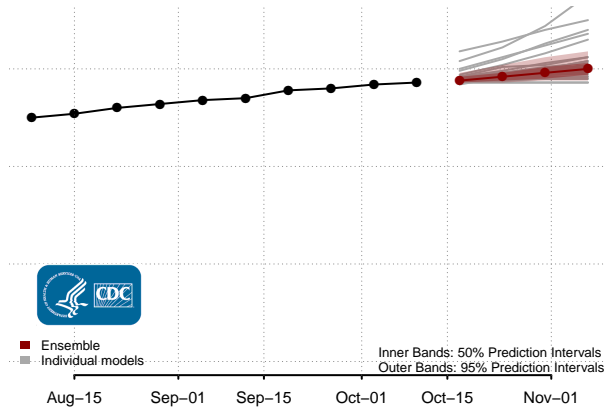
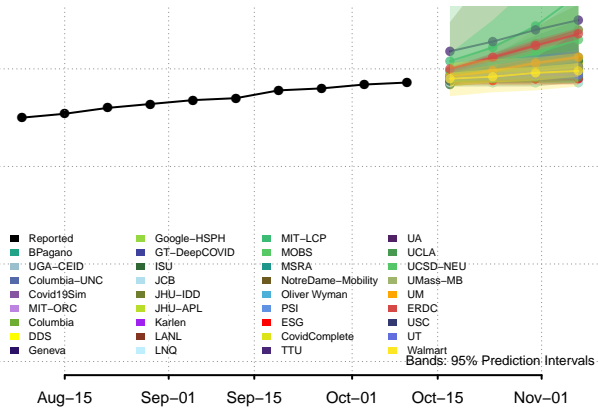
**New weekly deaths may increase in this location over the next four weeks. For these locations, the ensemble forecast indicates a probability of 0.75 or greater that more deaths will be reported in week four of the forecast than in the last reported week.

Maine

New Weekly Deaths

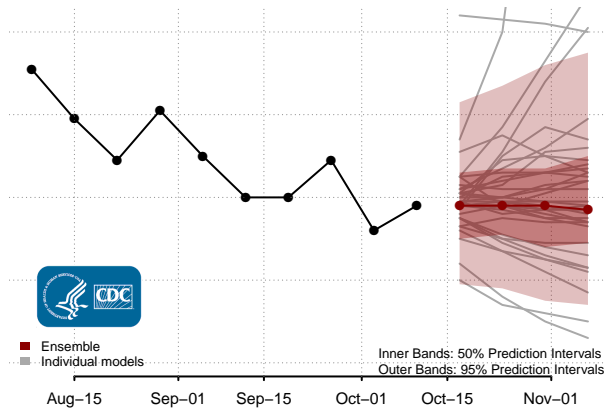
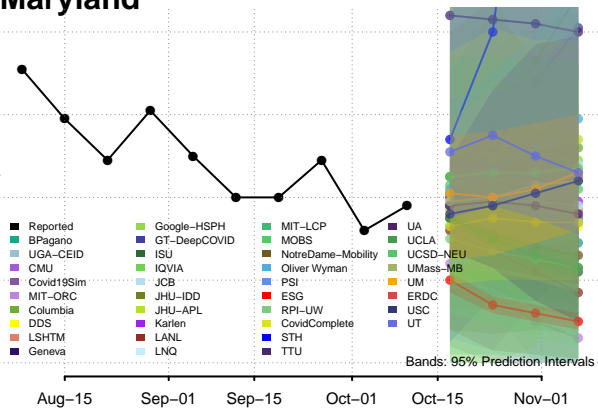


Total Deaths

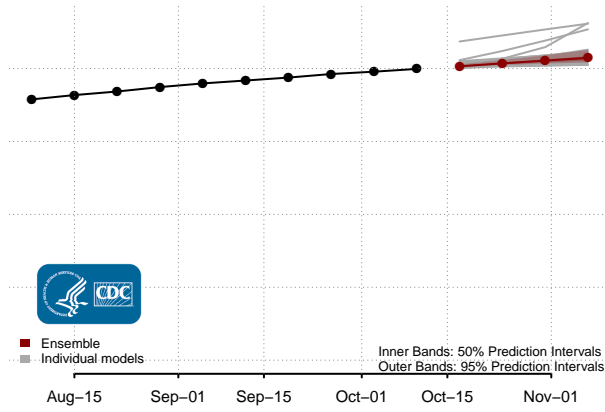
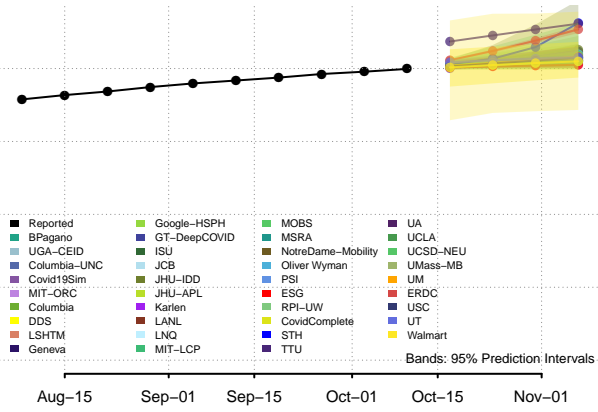


Maryland

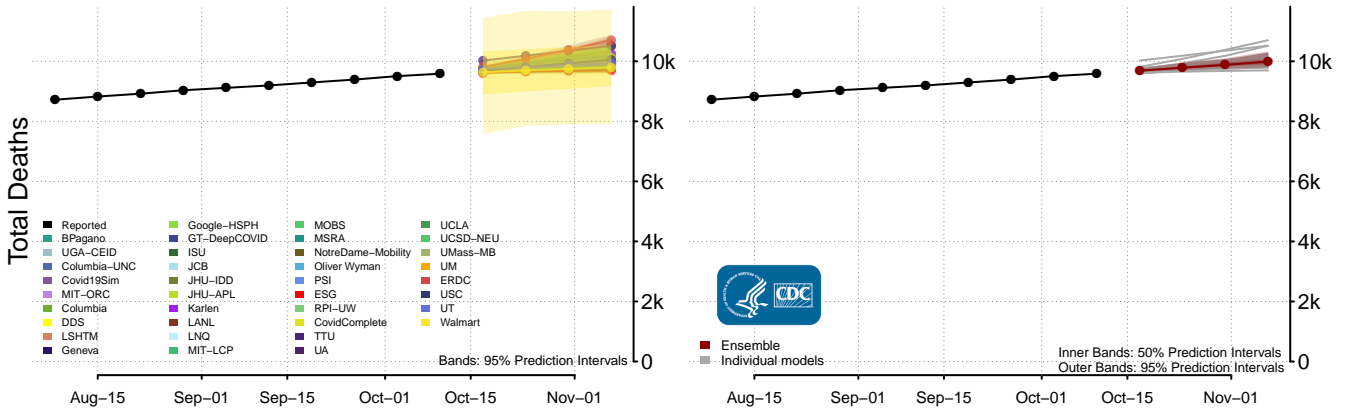
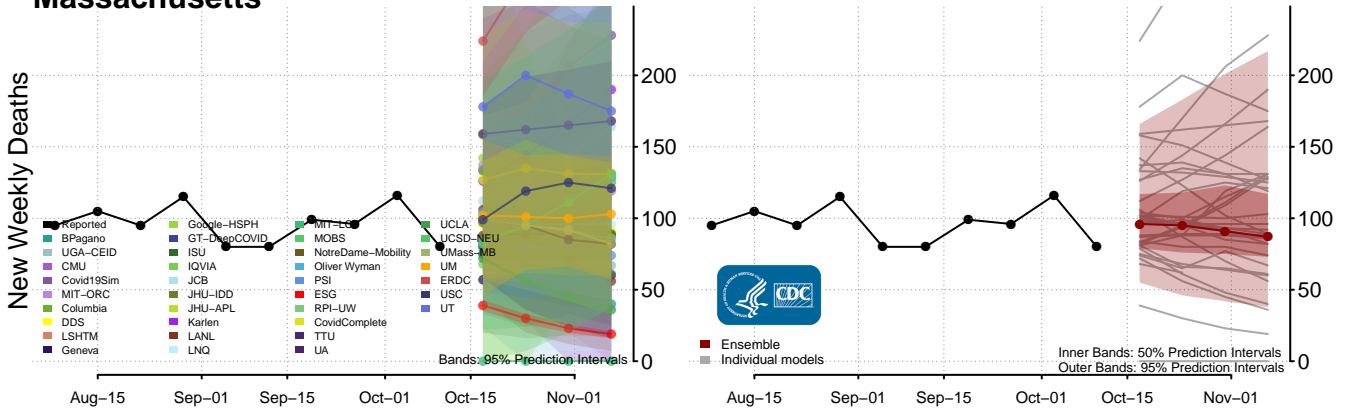
New Weekly Deaths



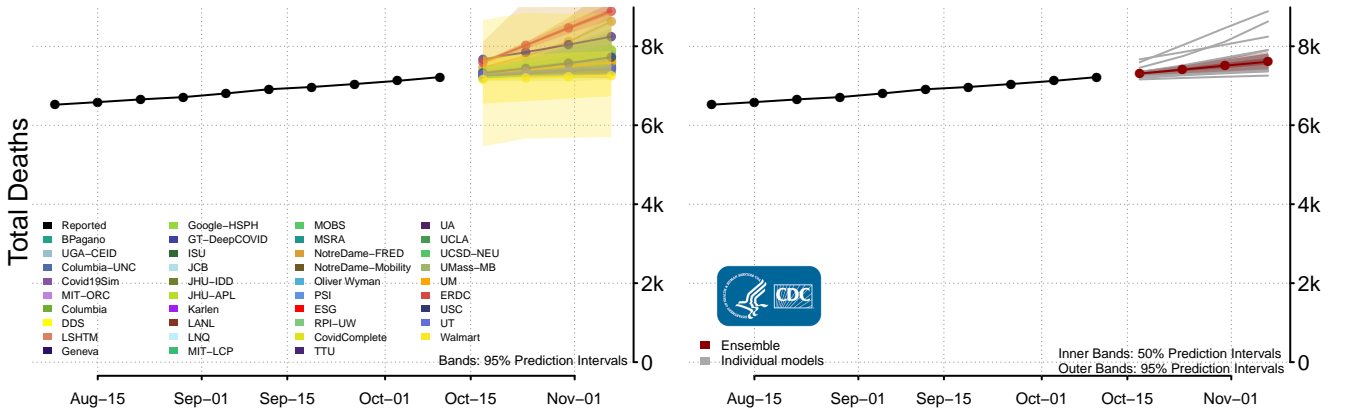
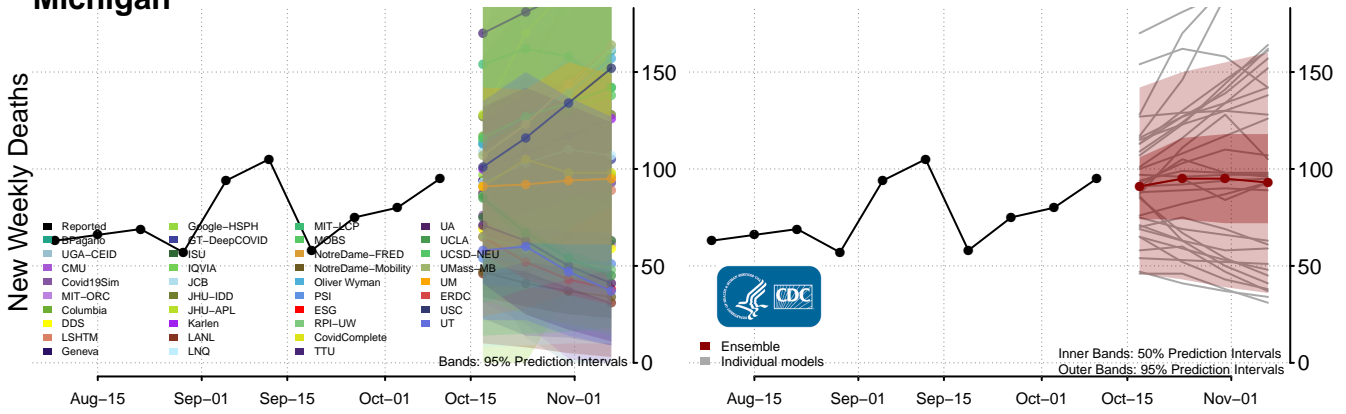
Total Deaths



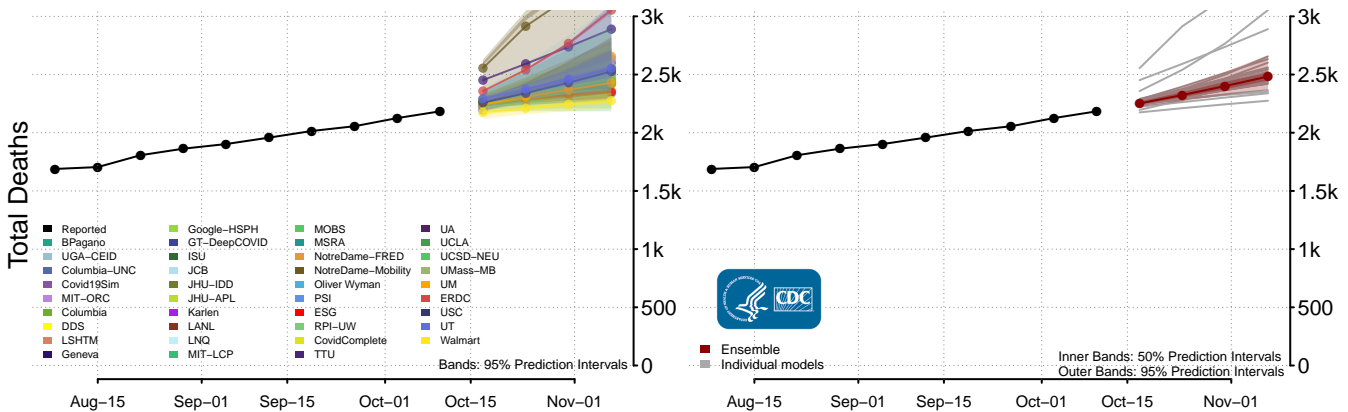
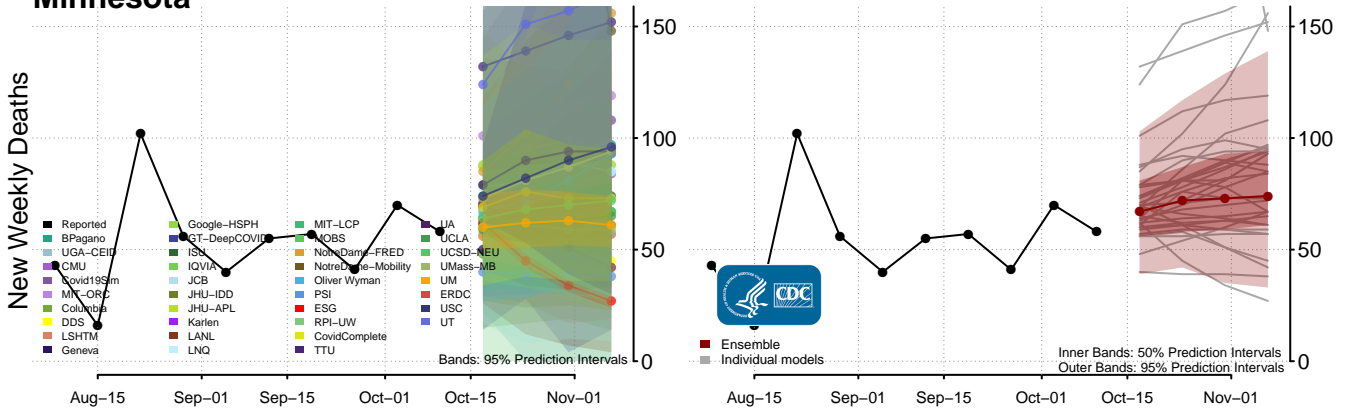
Massachusetts



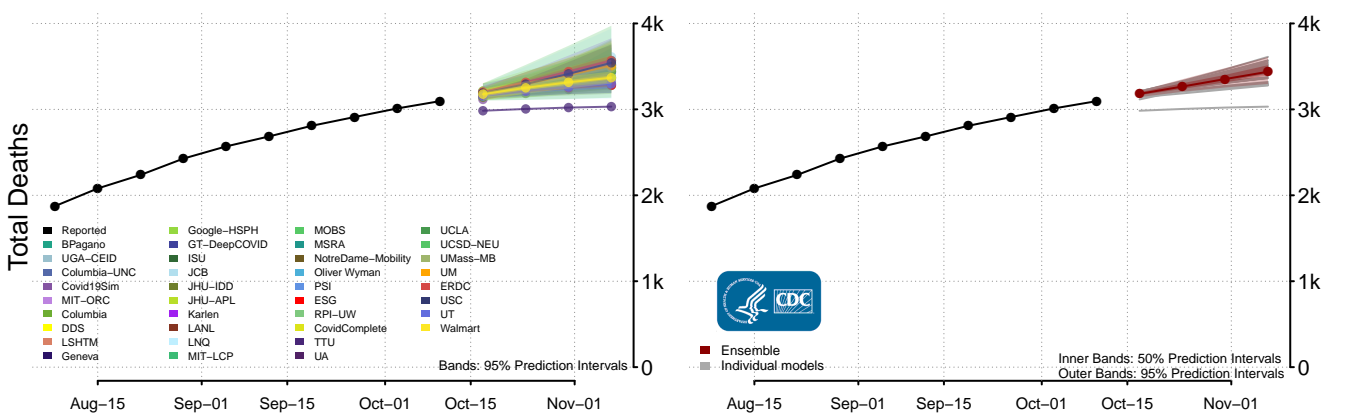
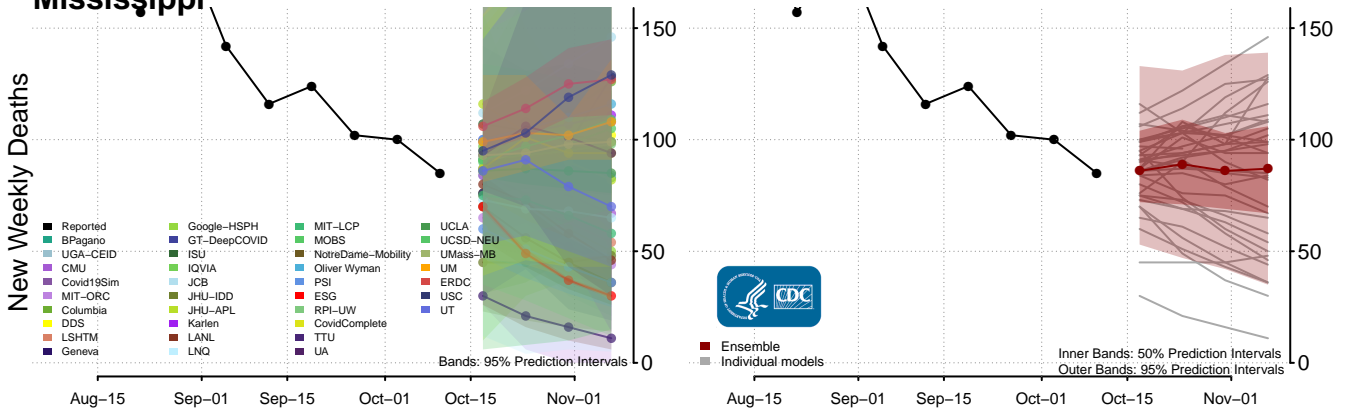
Michigan



Minnesota**

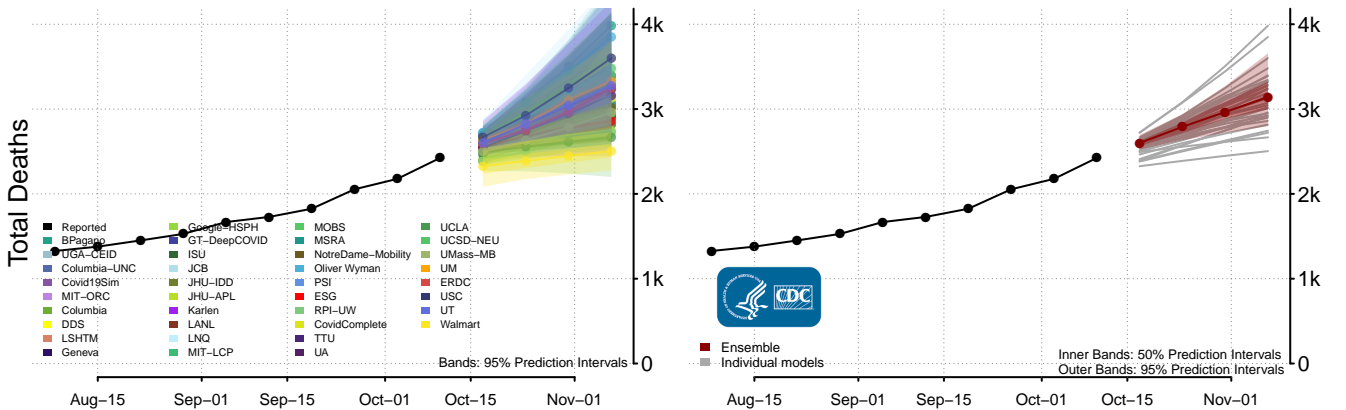
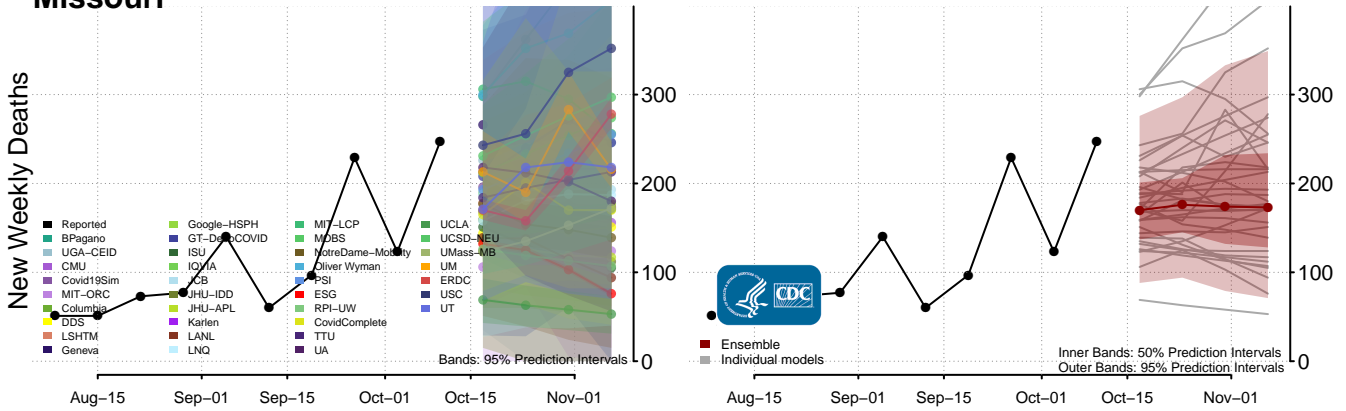


Mississippi

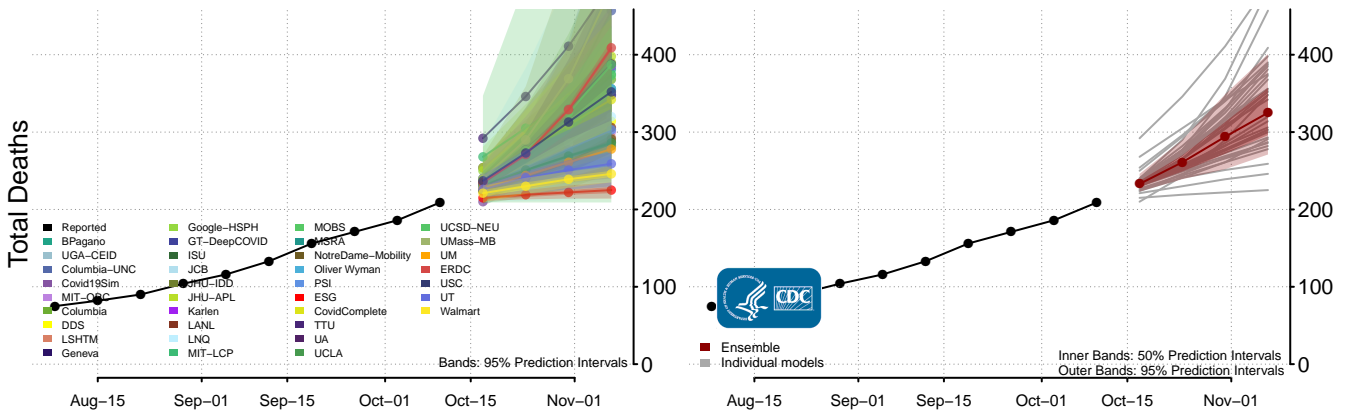
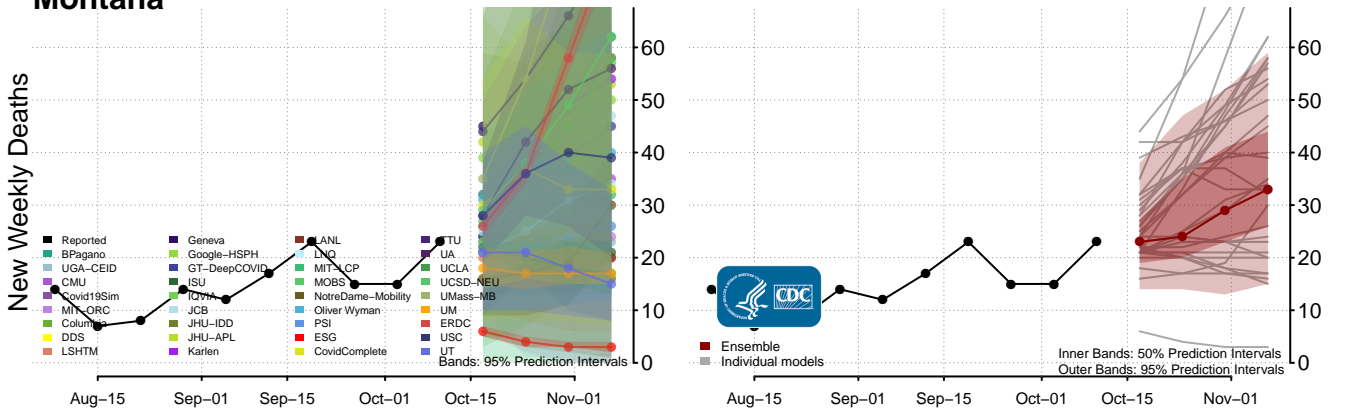


**New weekly deaths may increase in this location over the next four weeks. For these locations, the ensemble forecast indicates a probability of 0.75 or greater that more deaths will be reported in week four of the forecast than in the last reported week.

Missouri



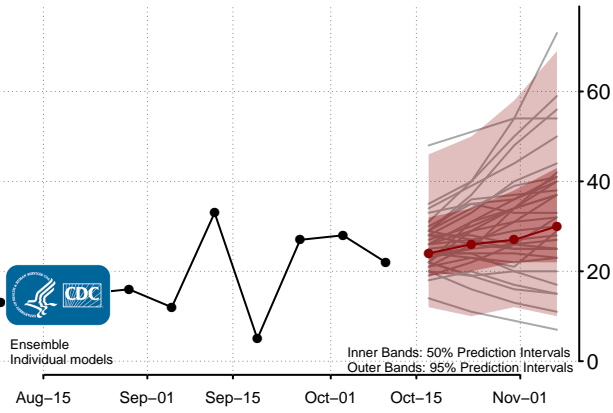
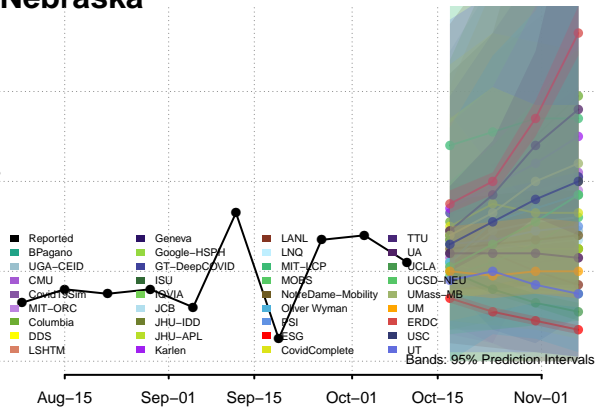
Montana**



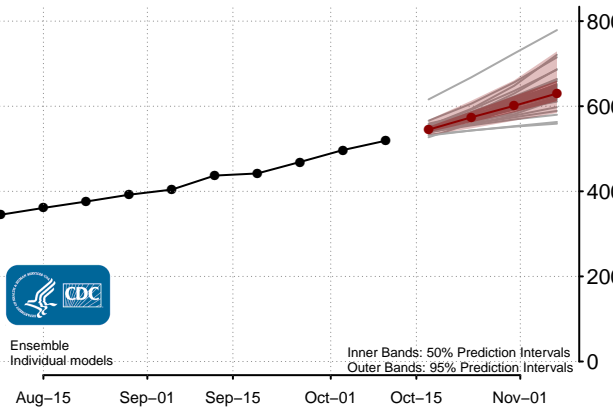
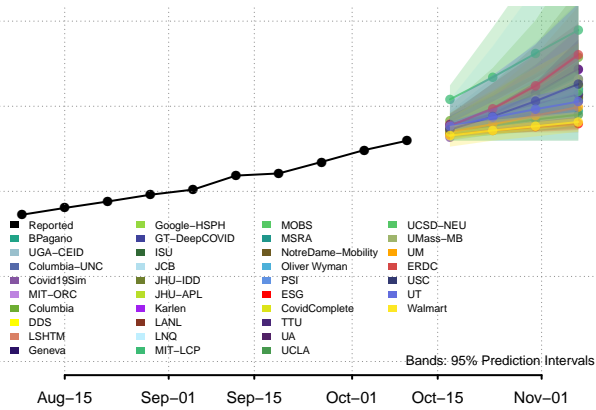
**New weekly deaths may increase in this location over the next four weeks. For these locations, the ensemble forecast indicates a probability of 0.75 or greater that more deaths will be reported in week four of the forecast than in the last reported week.

Nebraska

New Weekly Deaths

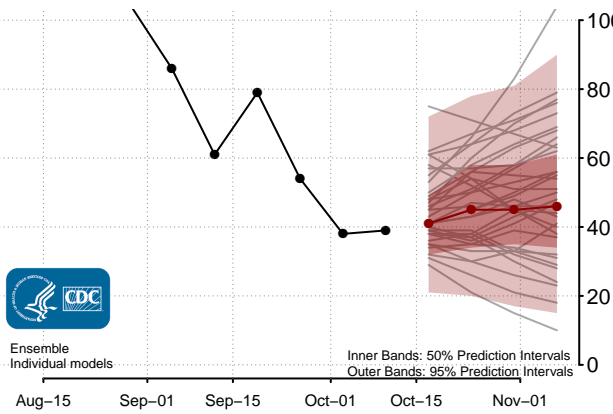
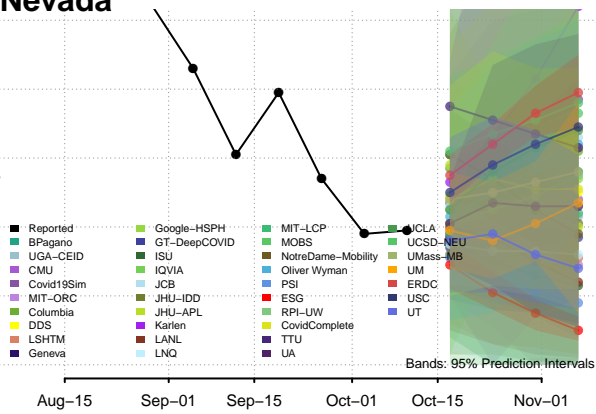


Total Deaths

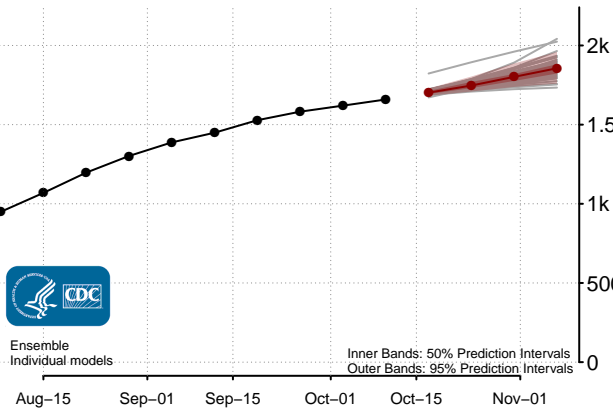
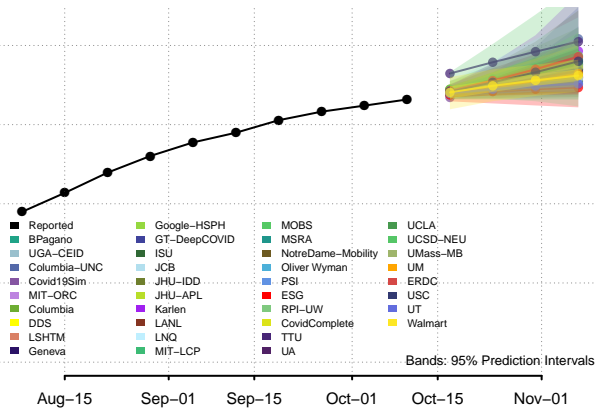


Nevada

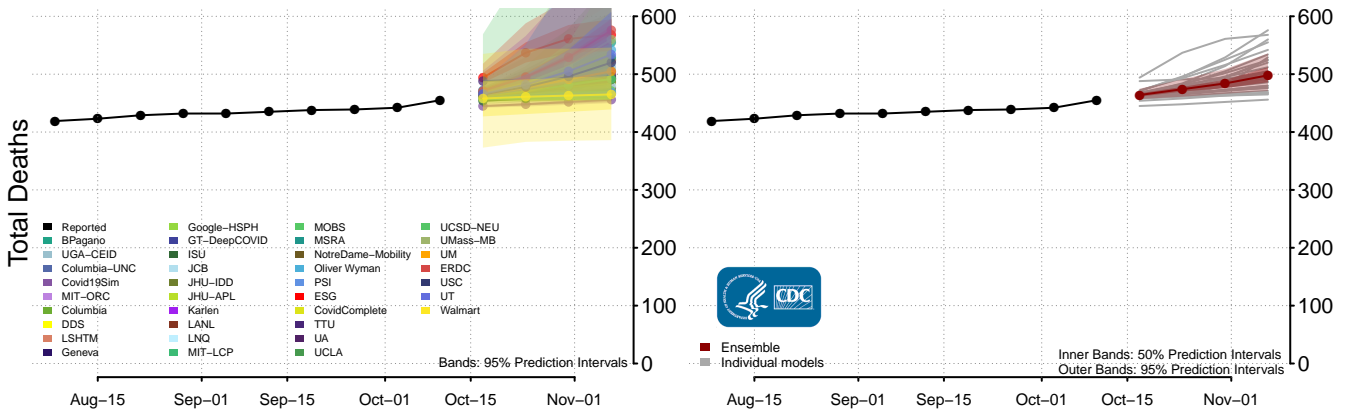
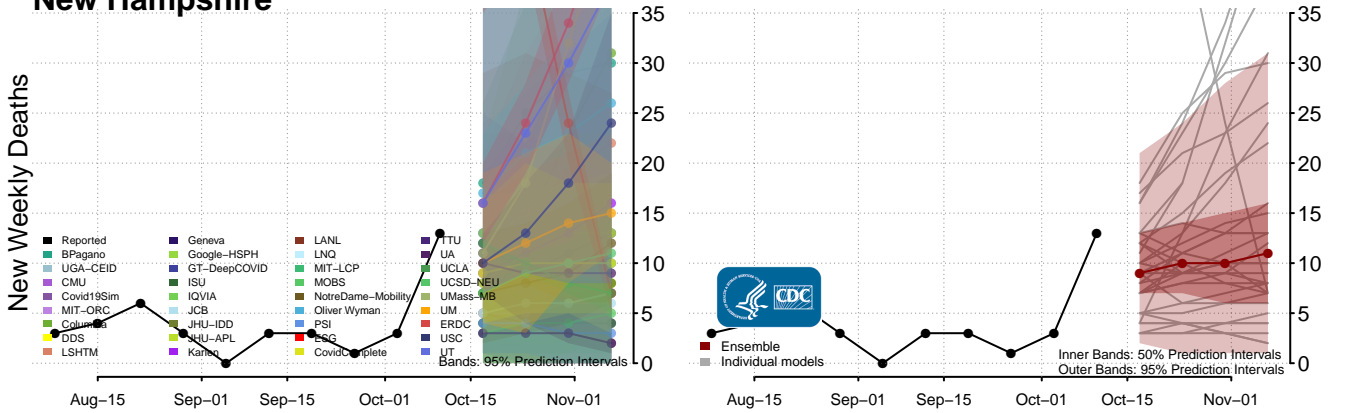
New Weekly Deaths



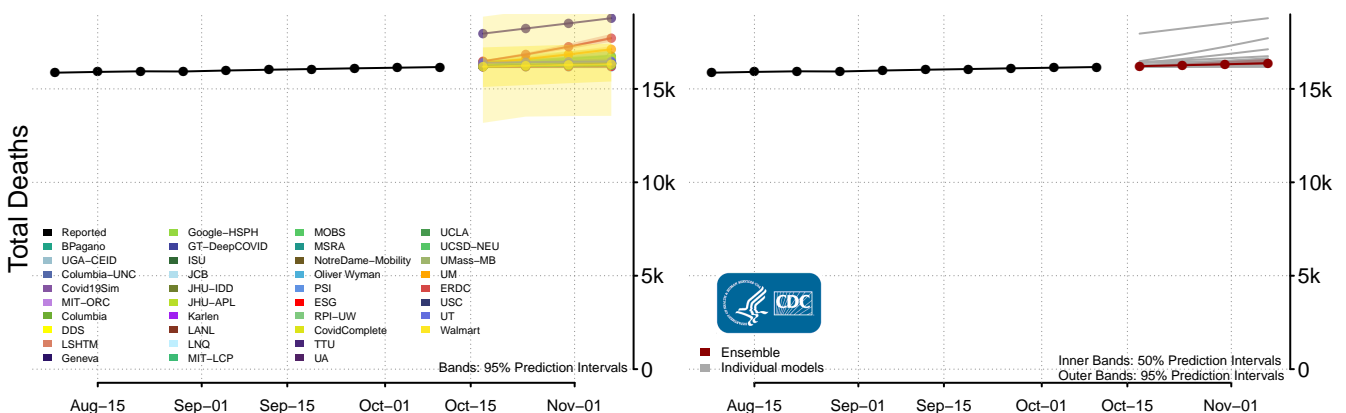
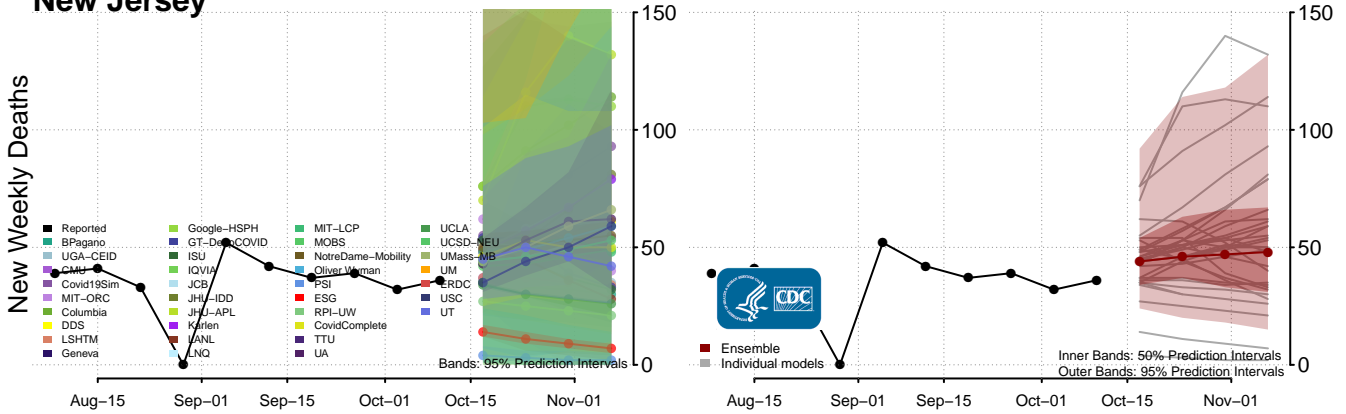
Total Deaths



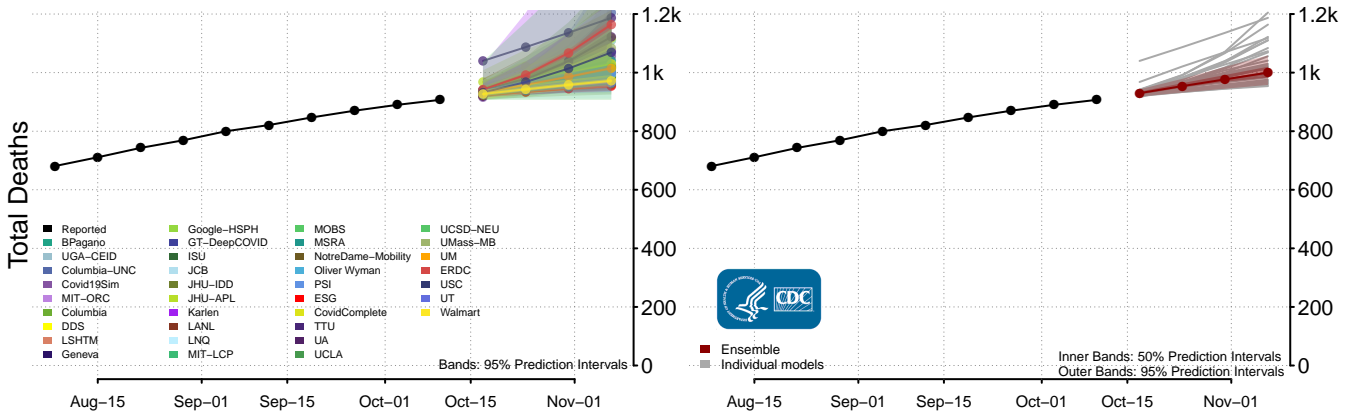
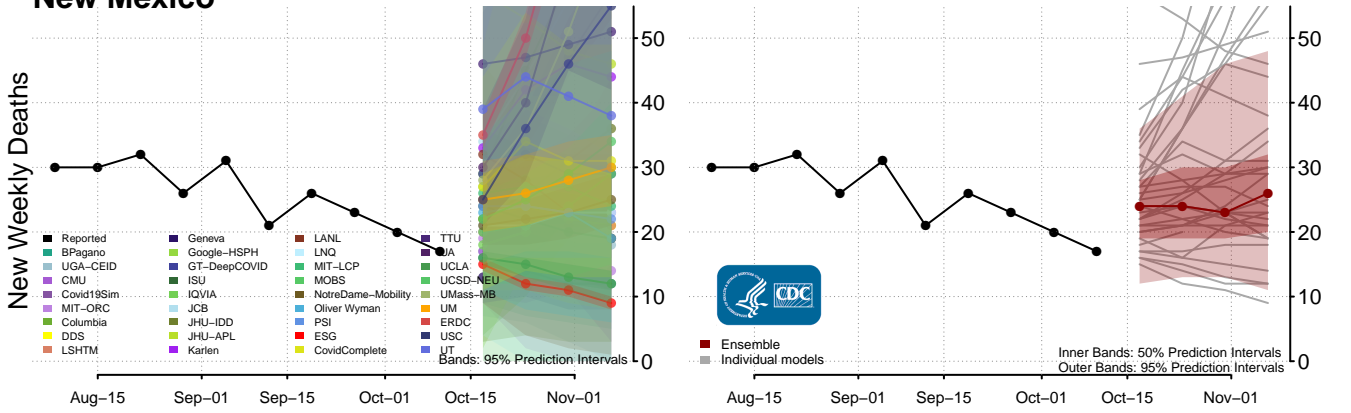
New Hampshire



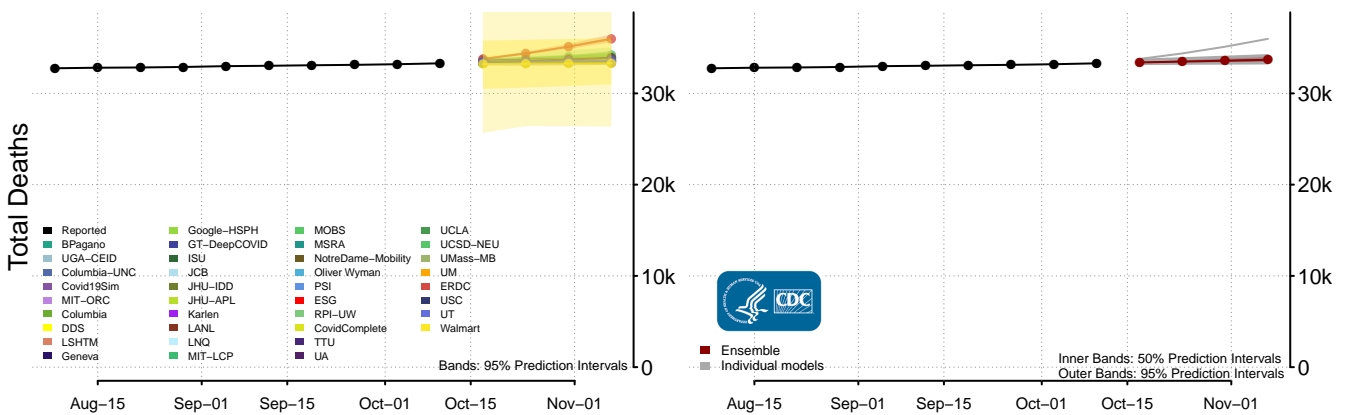
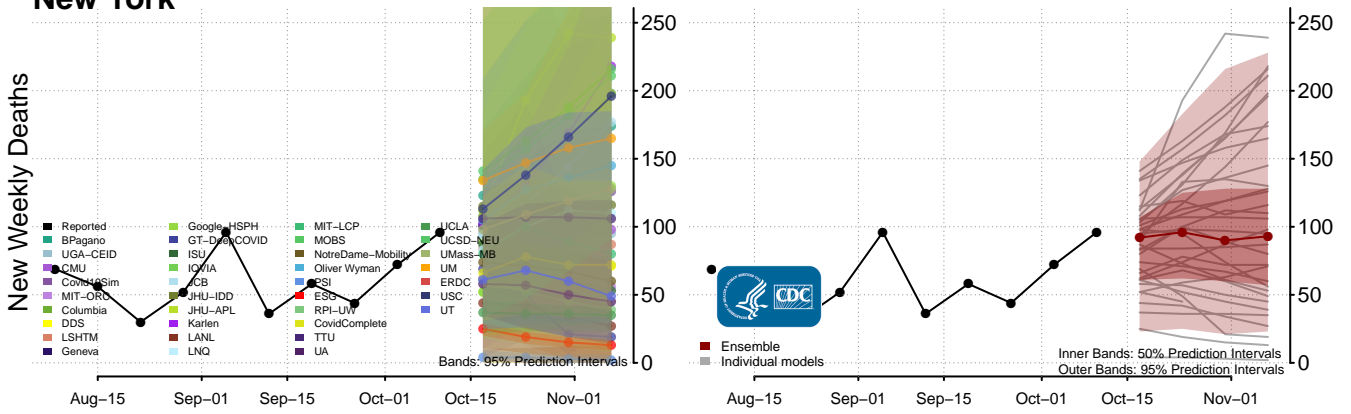
New Jersey



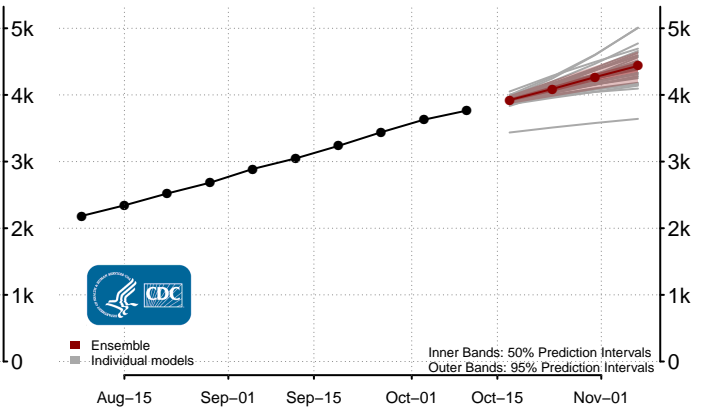
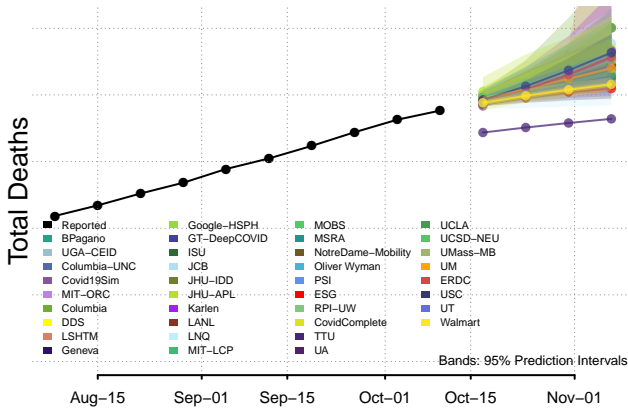
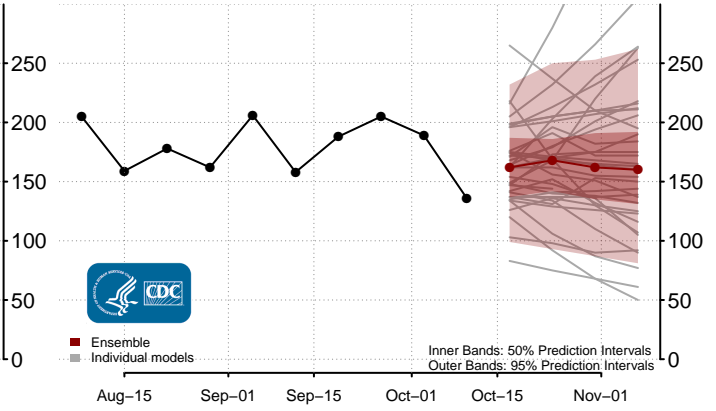
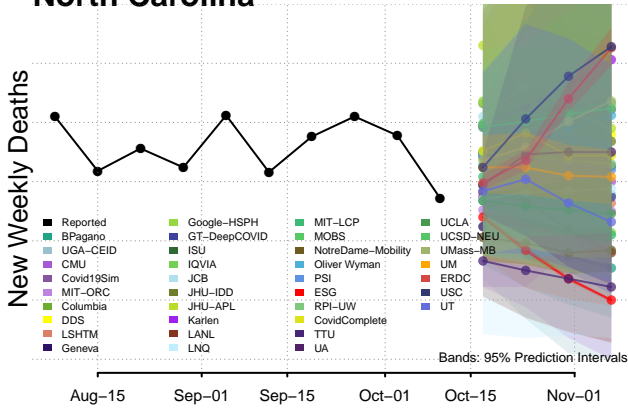
New Mexico



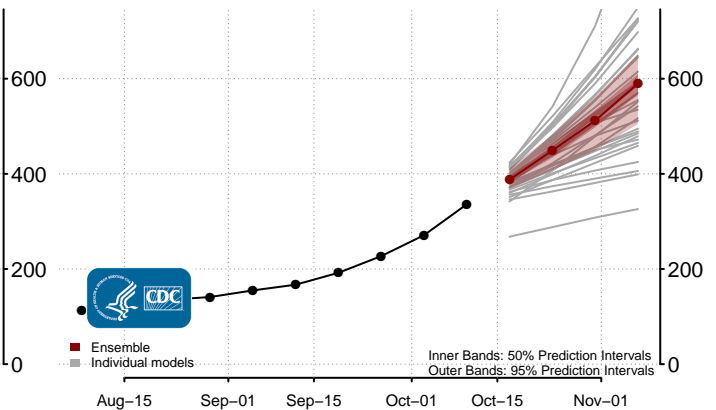
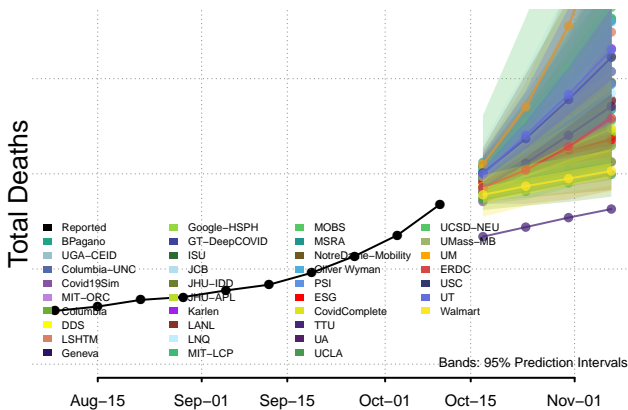
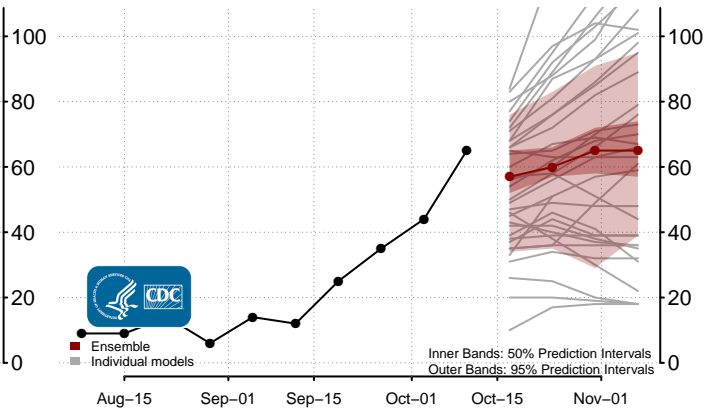
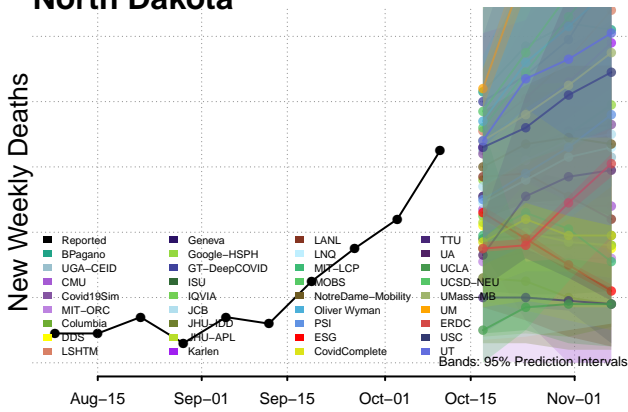
New York



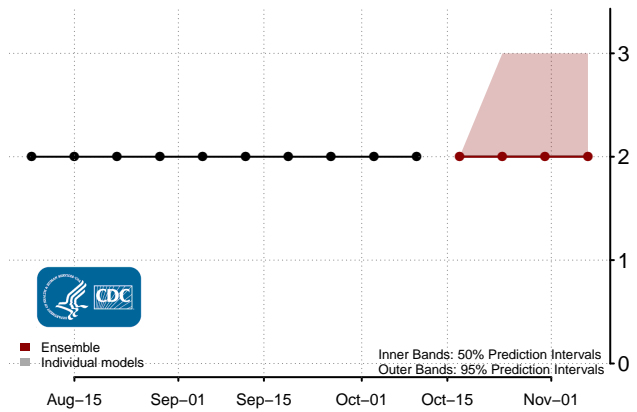
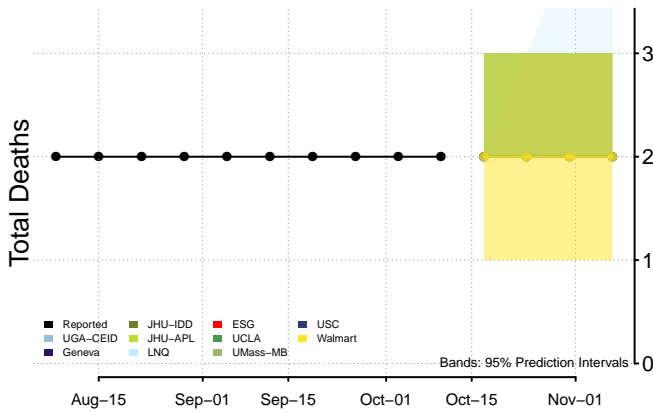
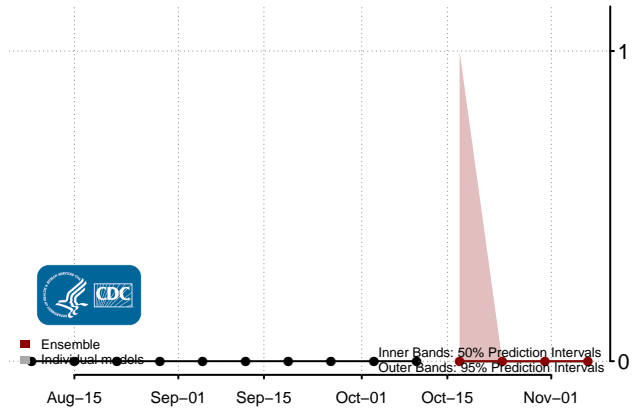
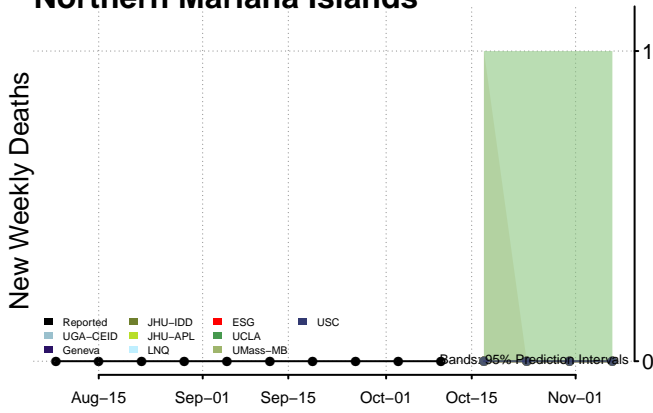
North Carolina



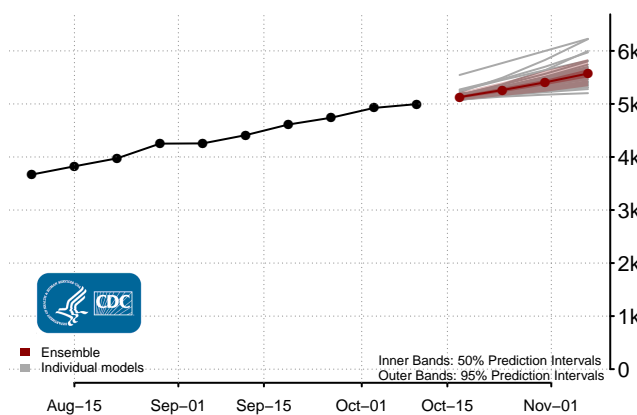
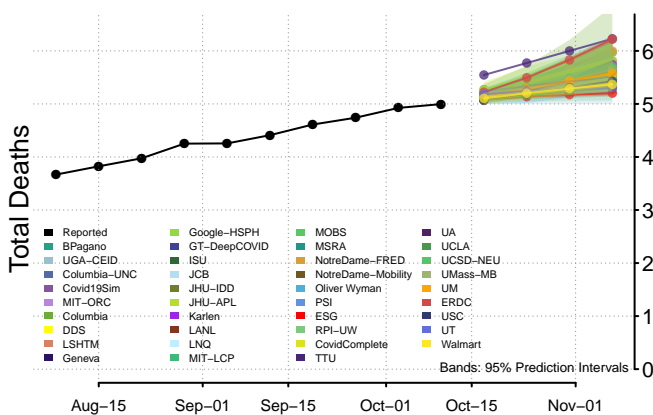
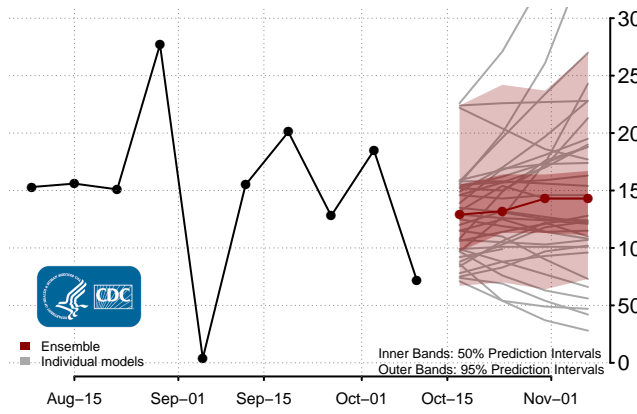
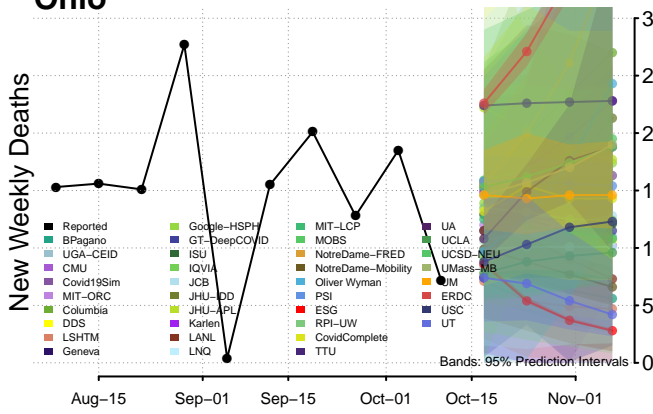
North Dakota



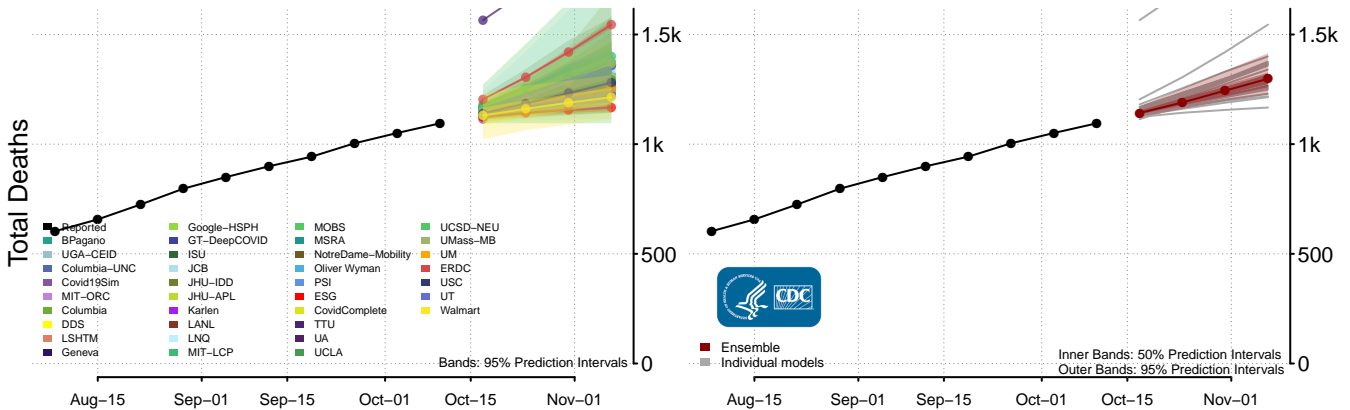
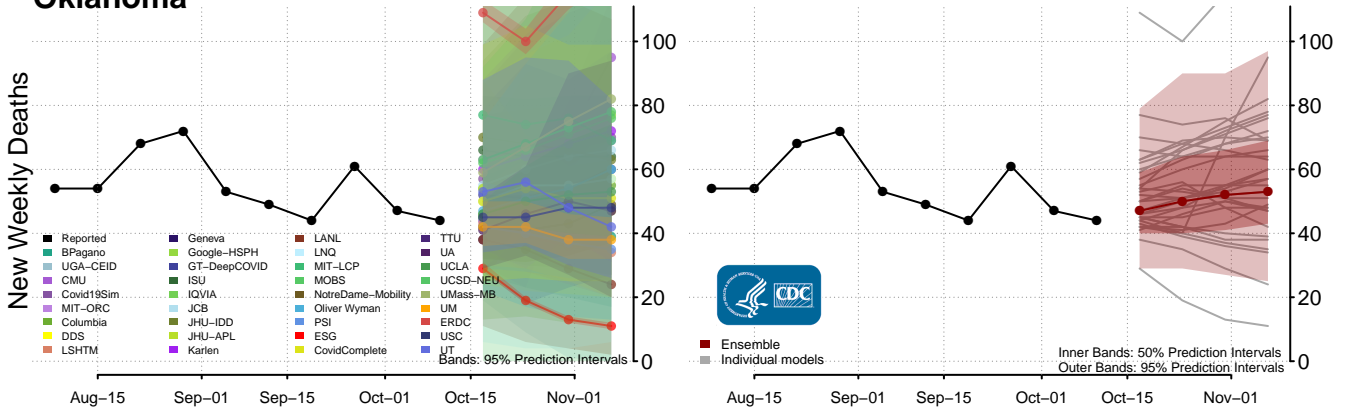
Northern Mariana Islands



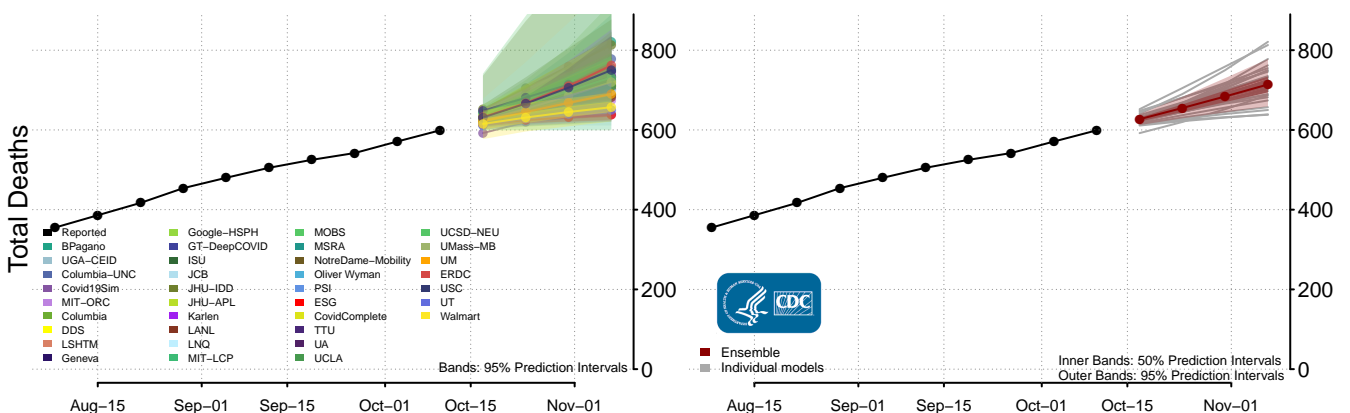
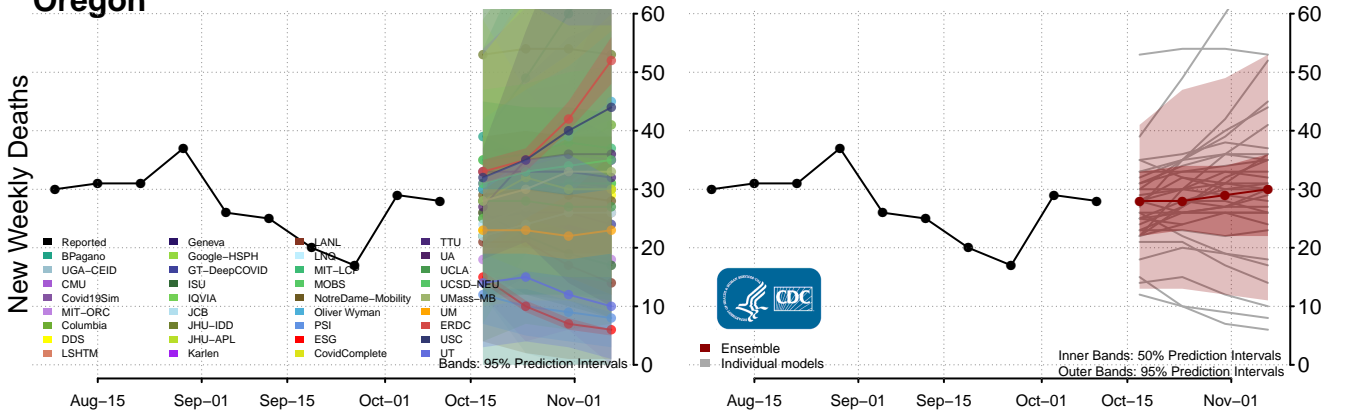
Ohio



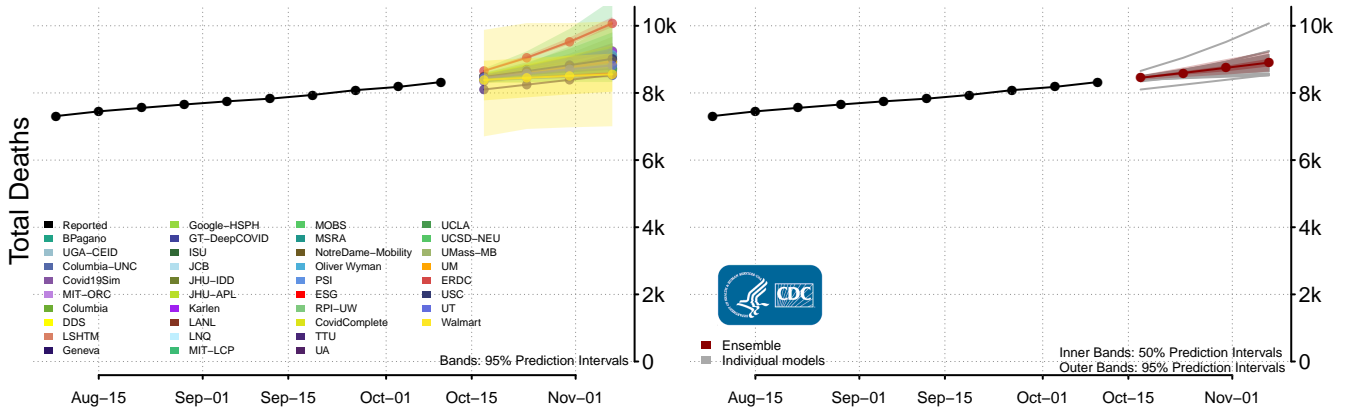
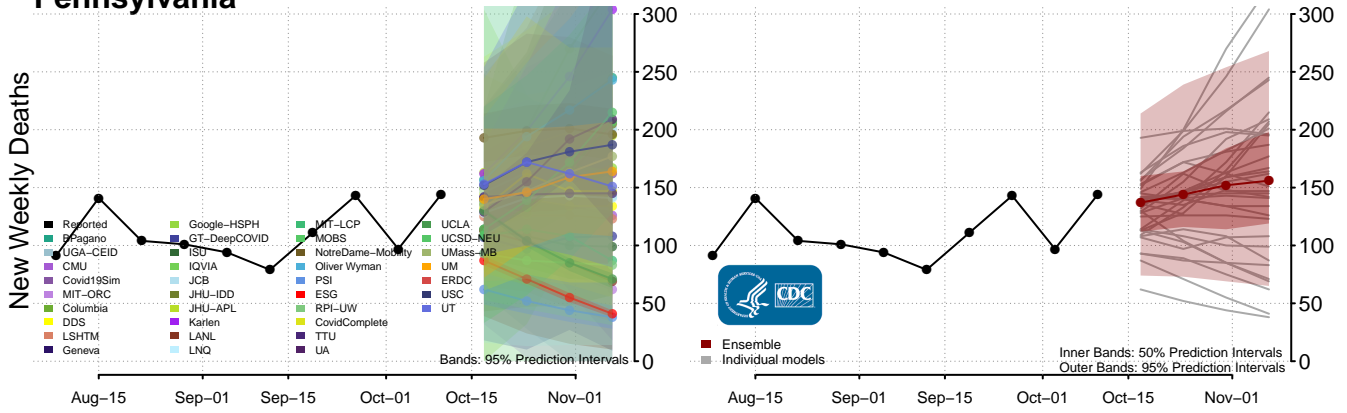
Oklahoma



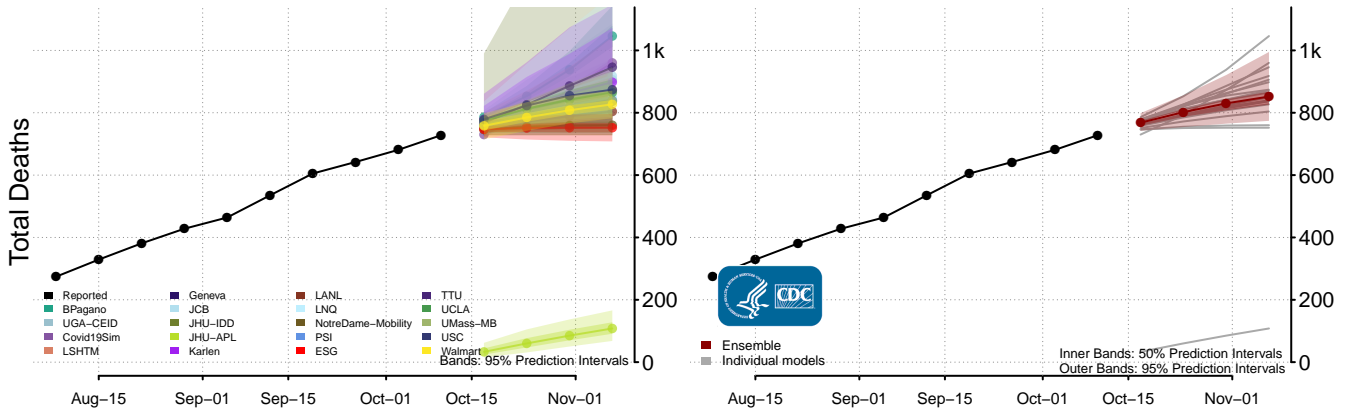
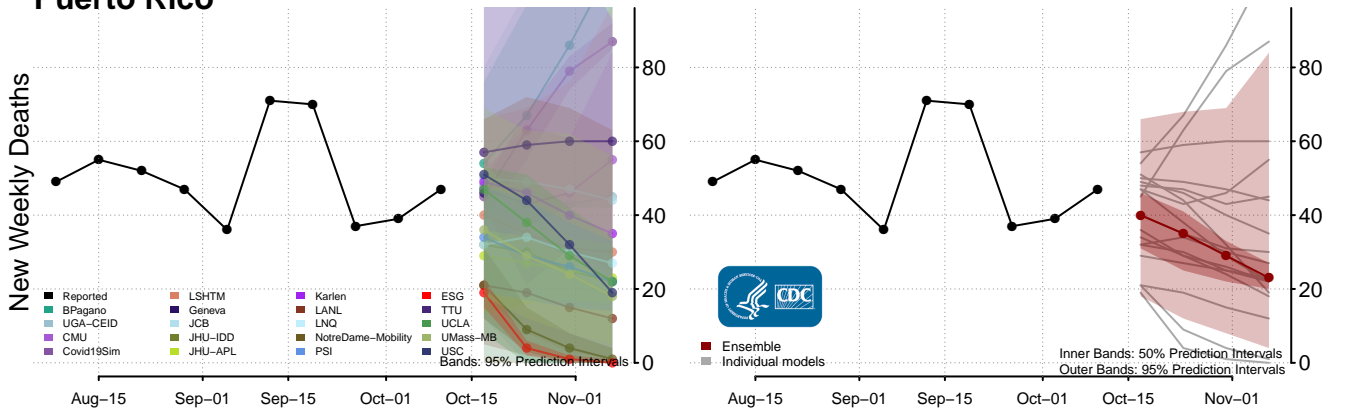
Oregon



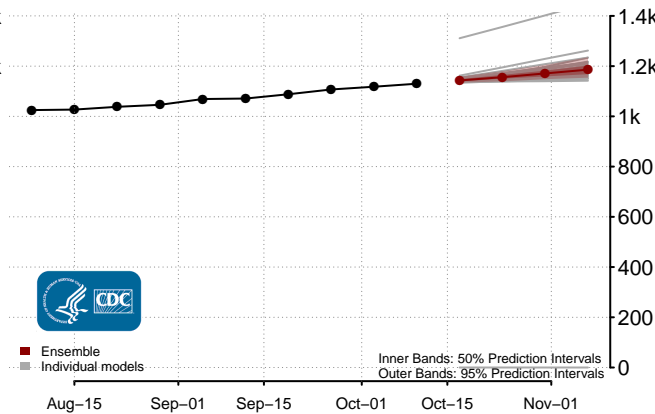
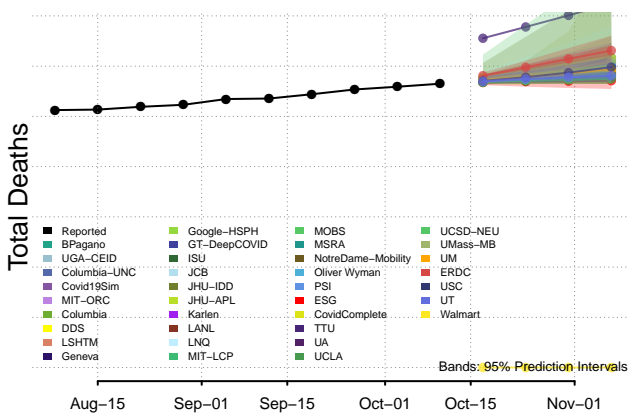
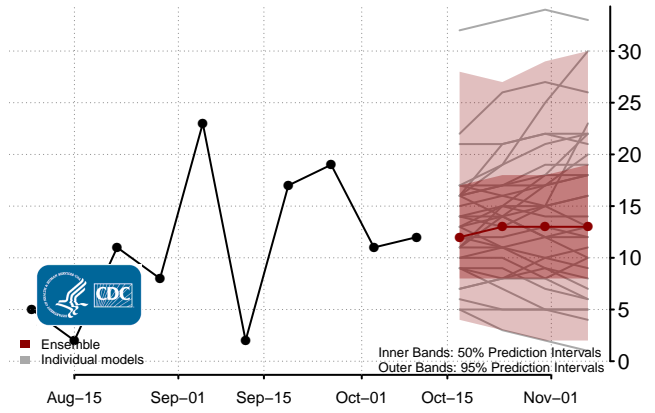
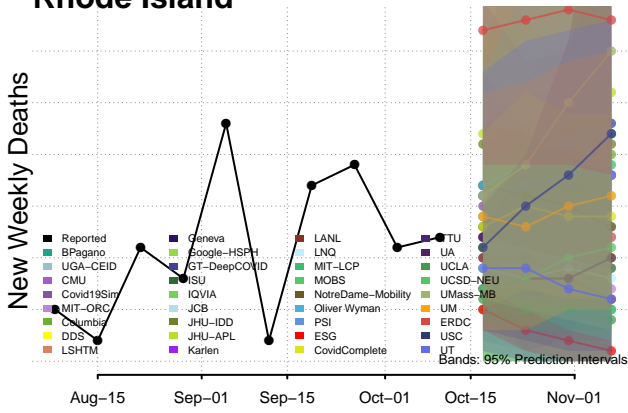
Pennsylvania



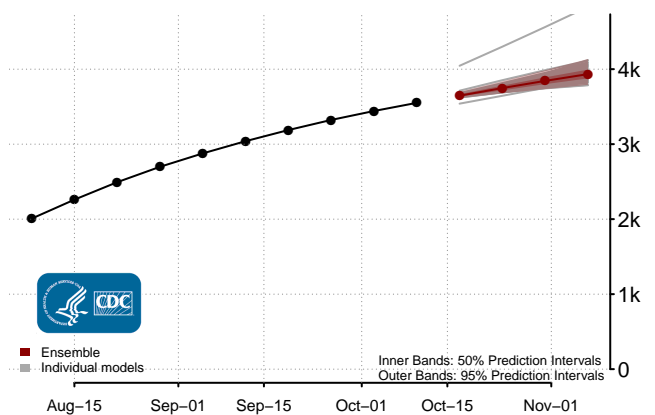
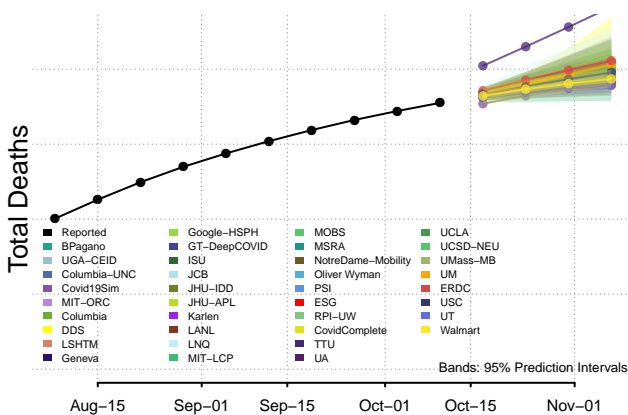
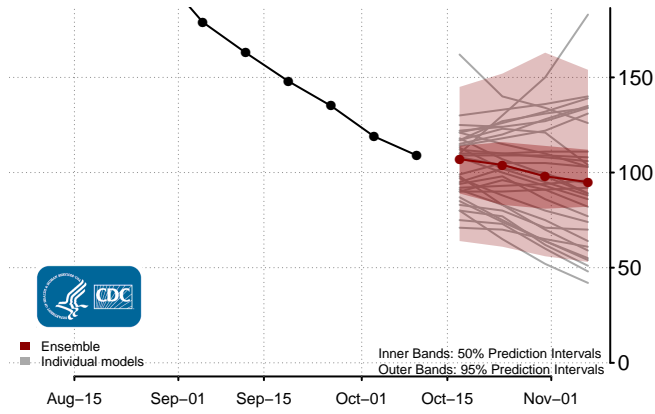
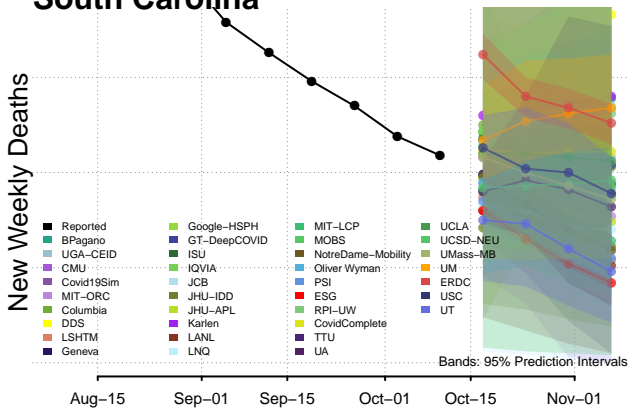
Puerto Rico



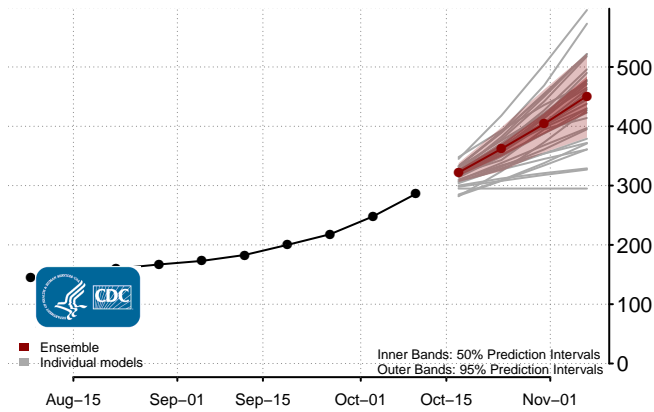
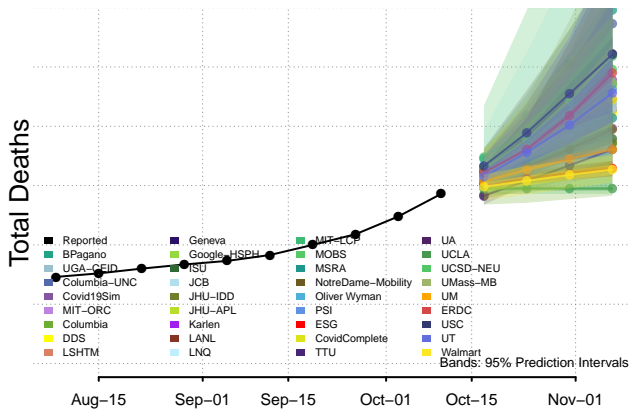
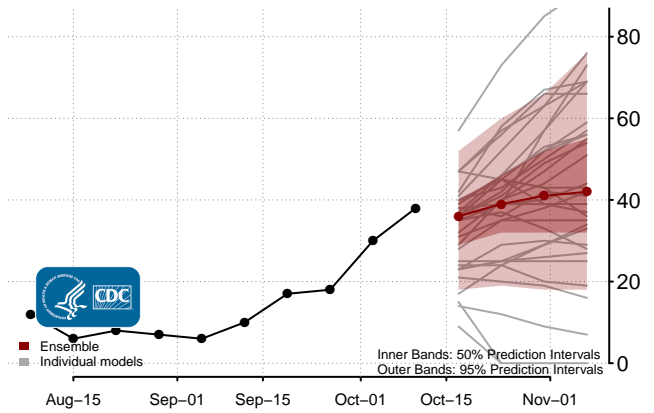
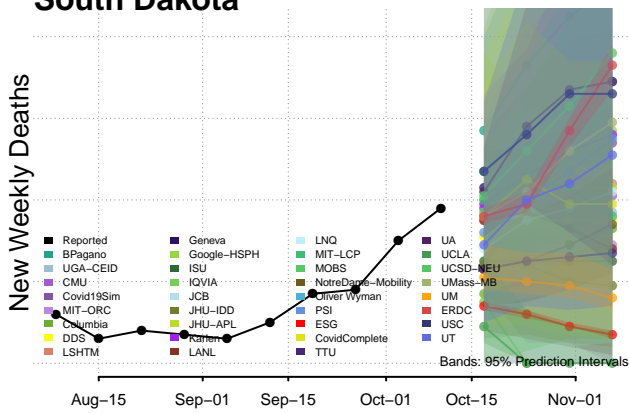
Rhode Island



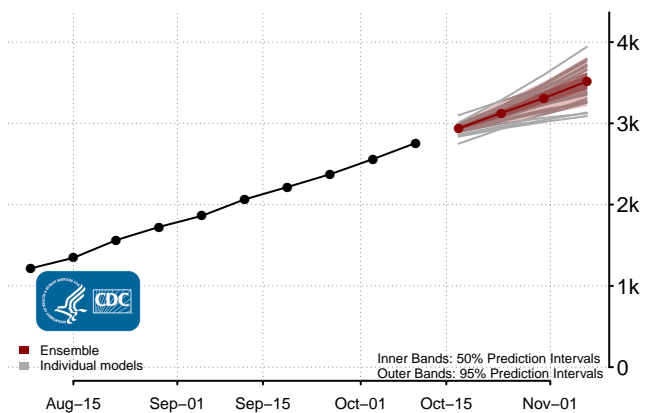
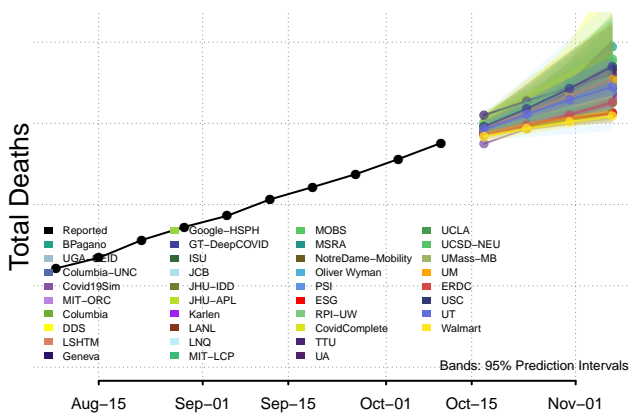
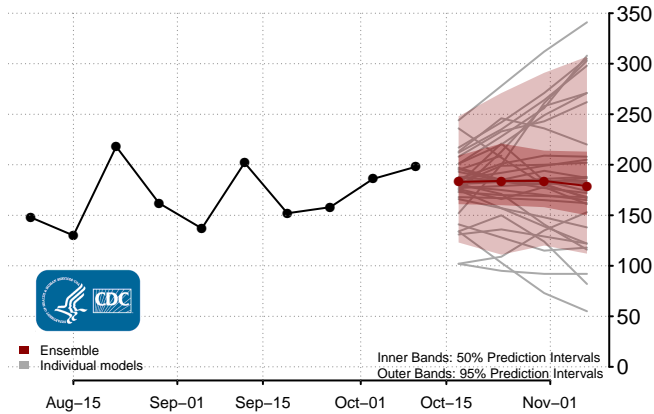
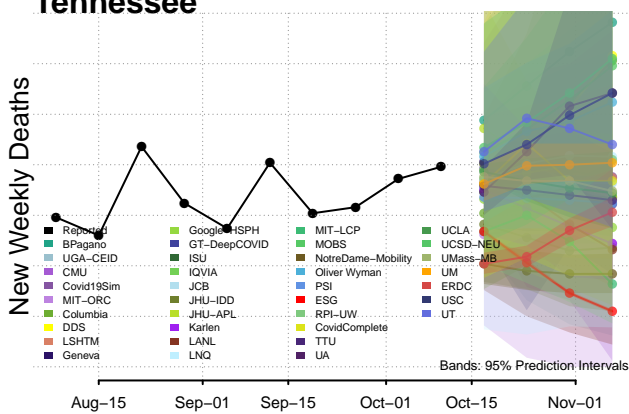
South Carolina



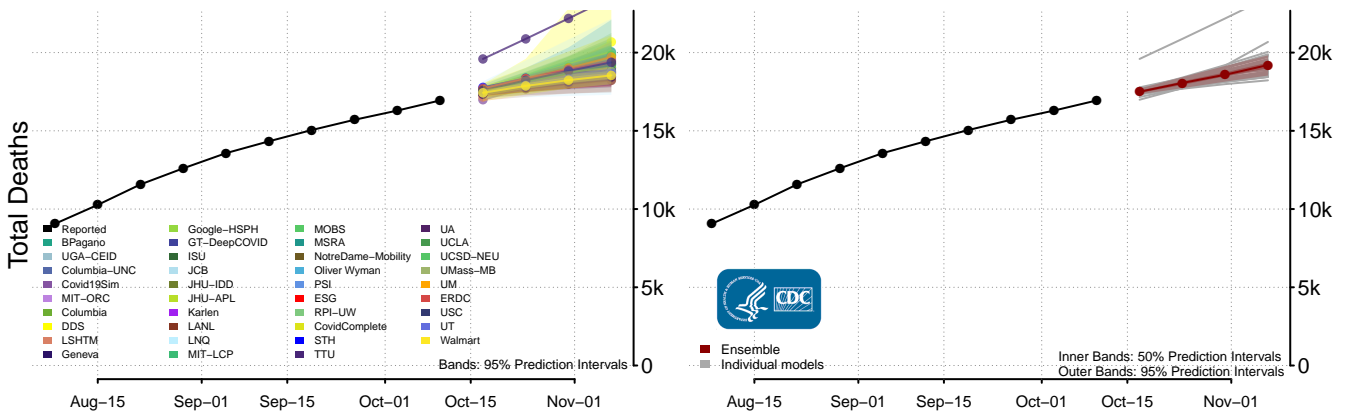
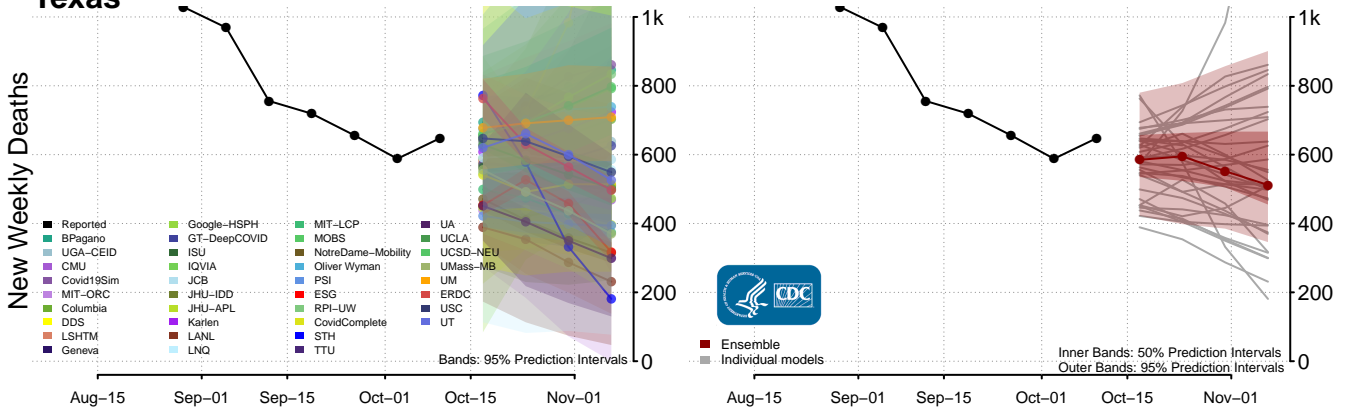
South Dakota



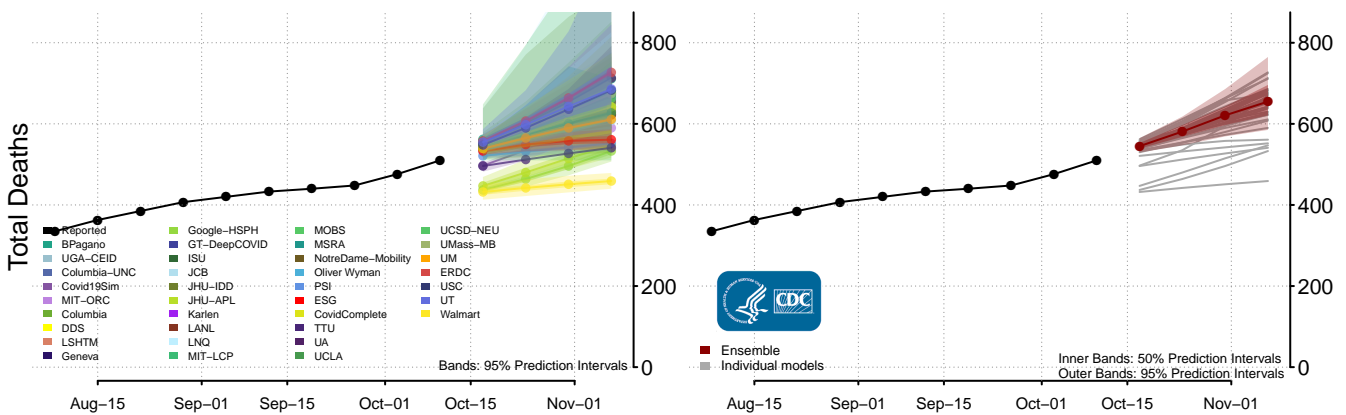
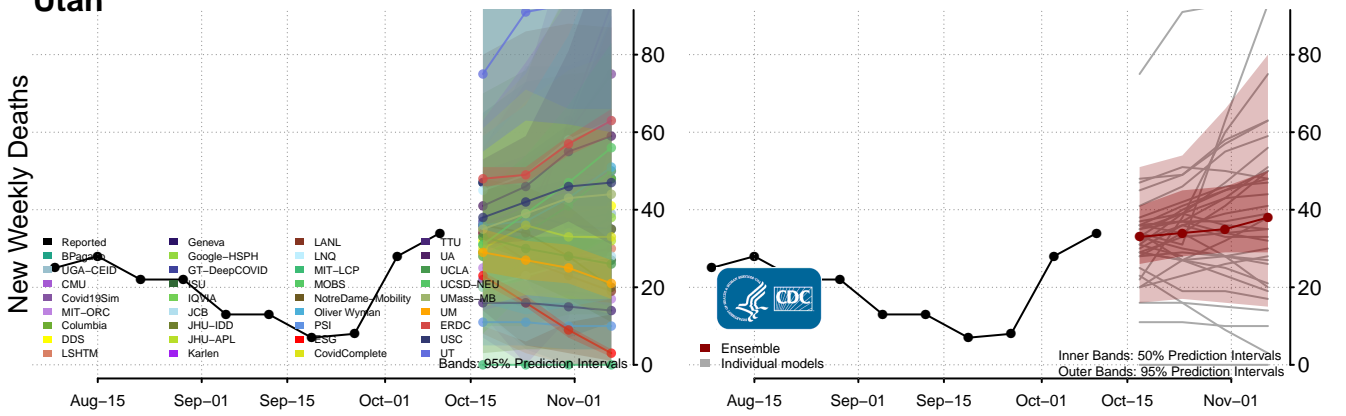
Tennessee



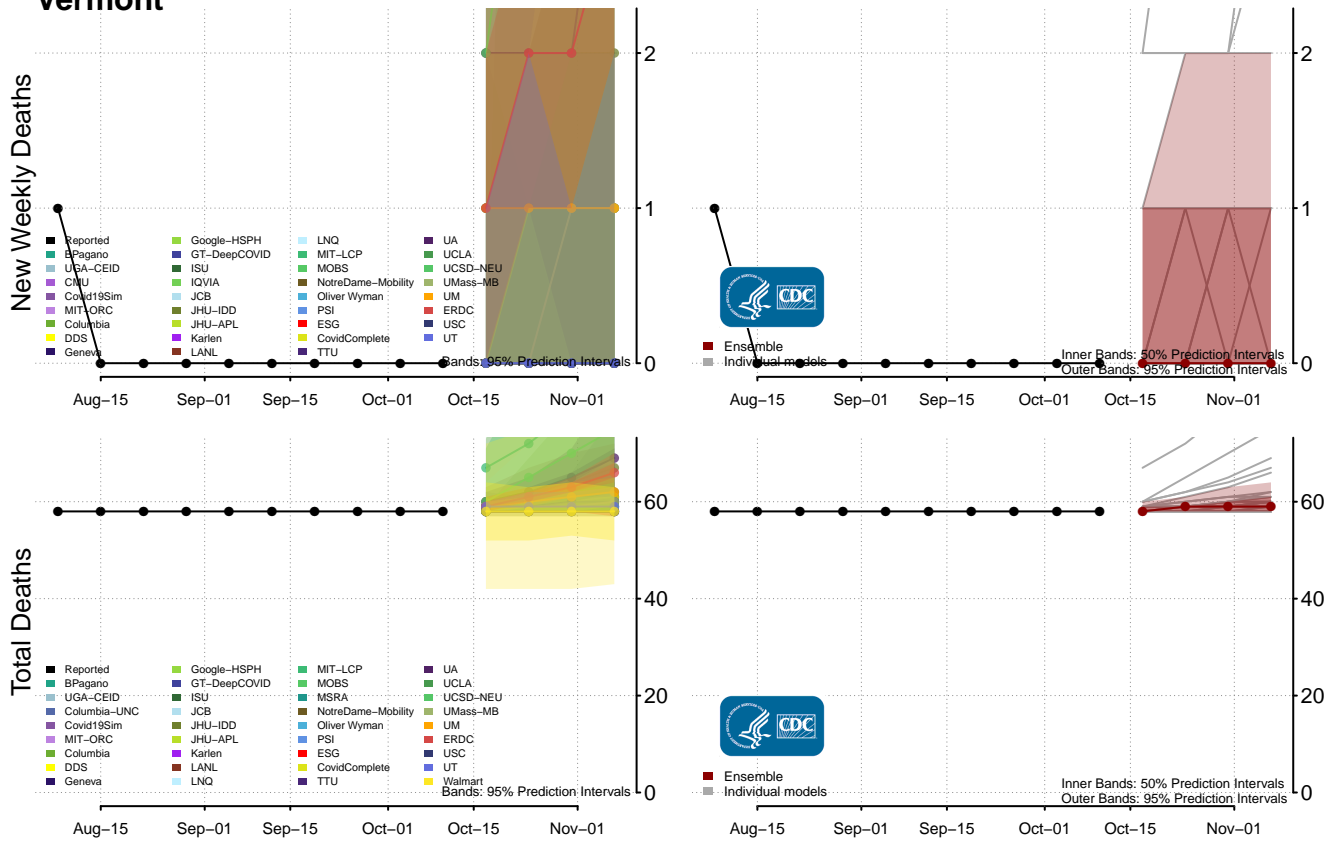
Texas



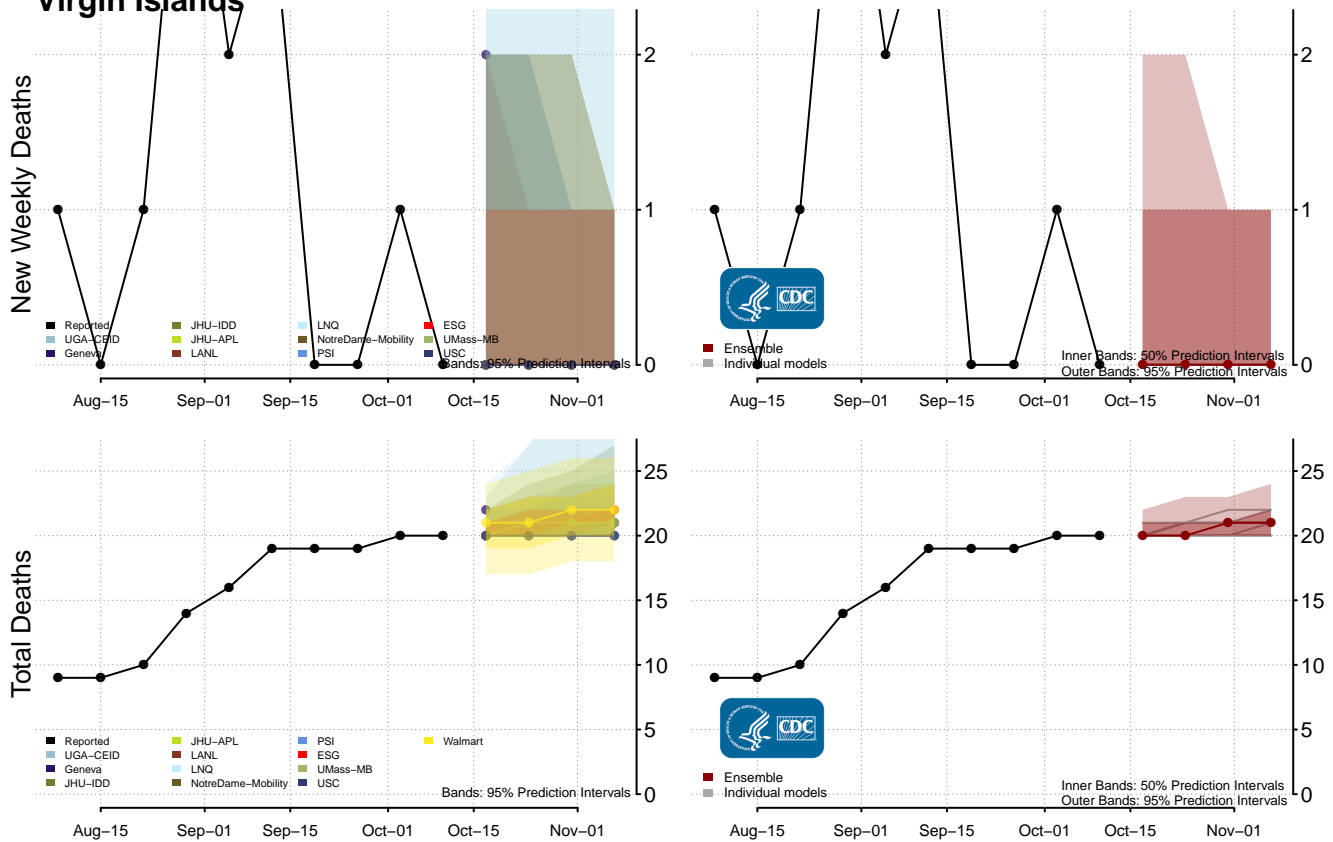
Utah



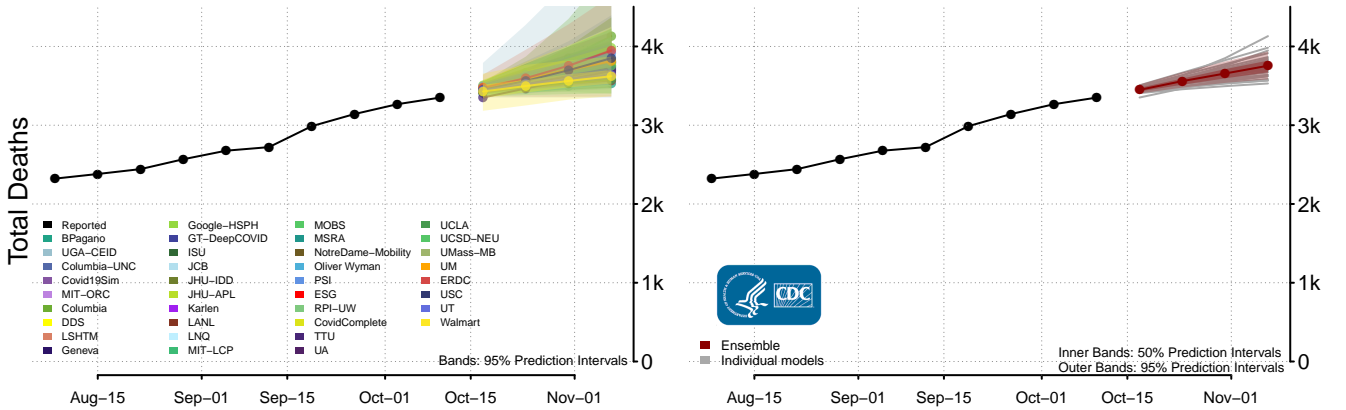
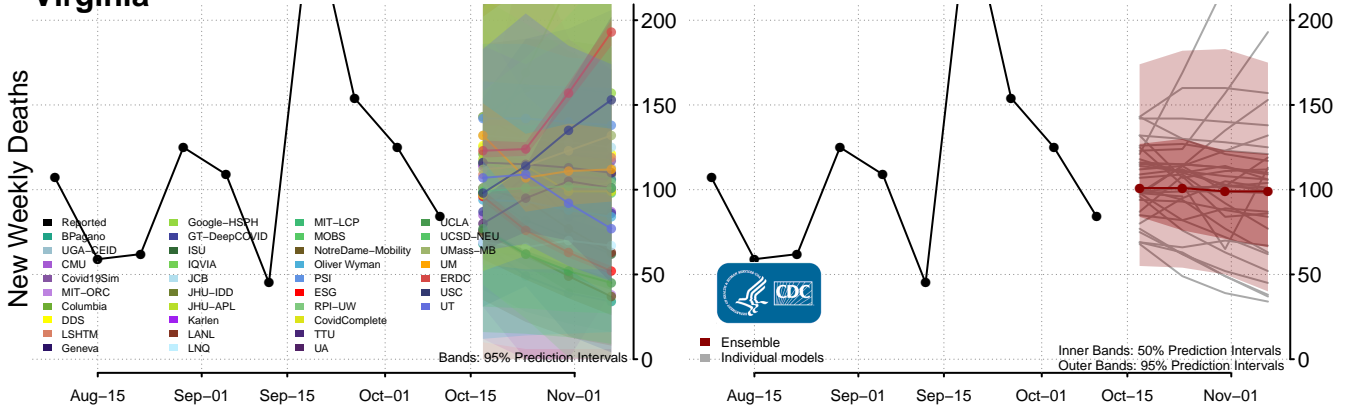
Vermont



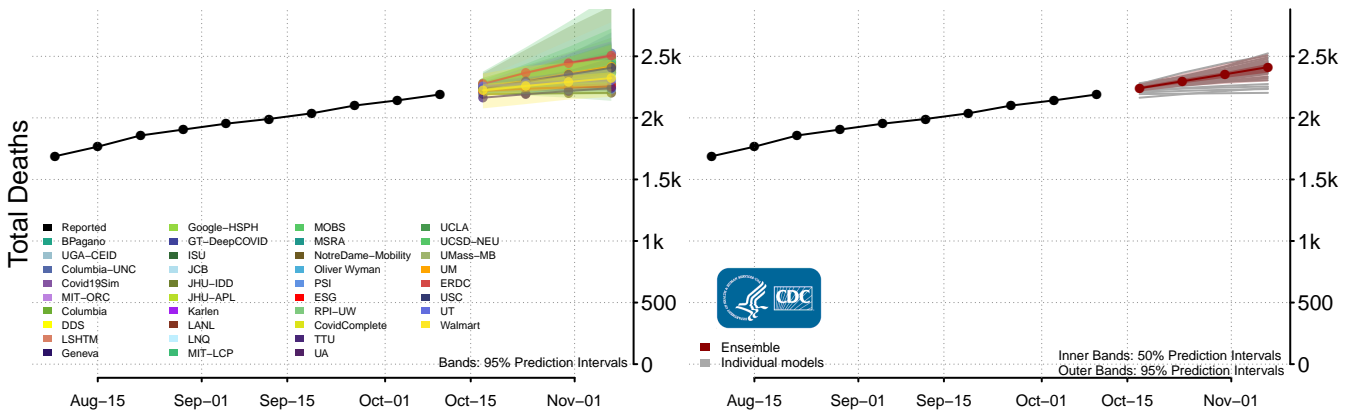
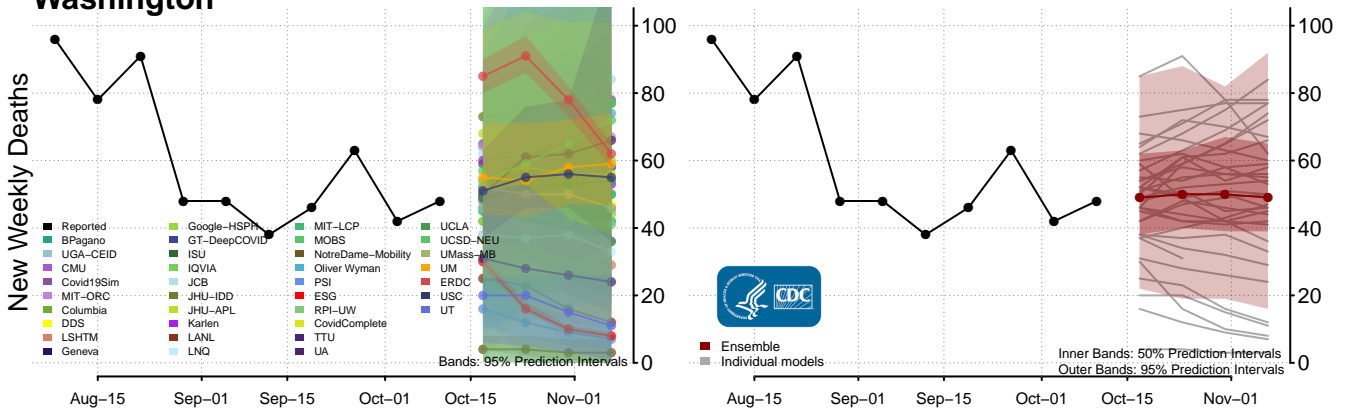
Virgin Islands



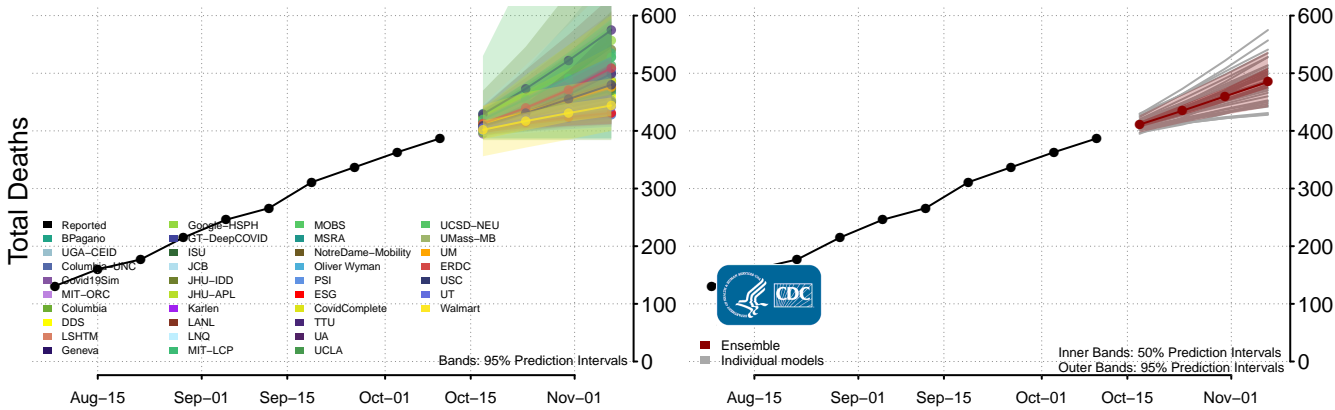
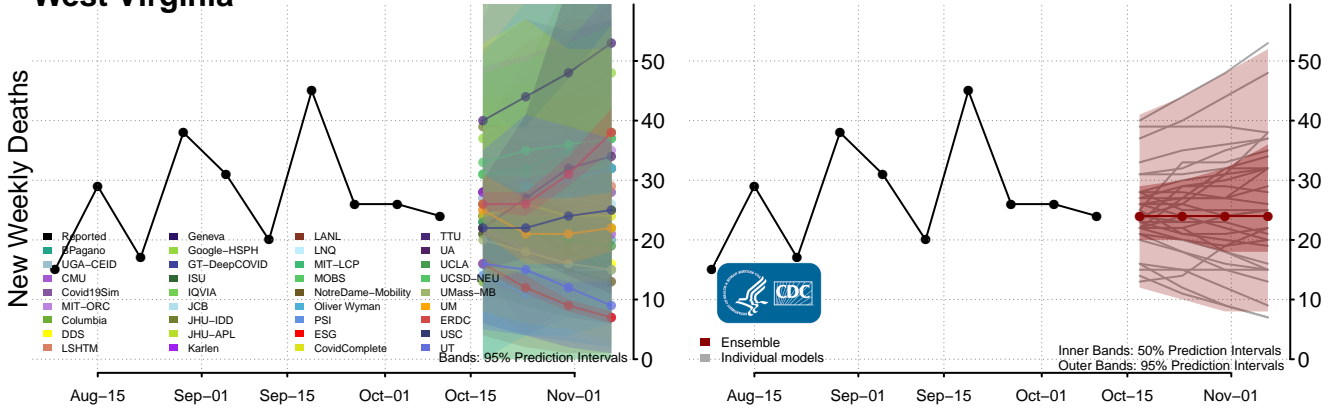
Virginia



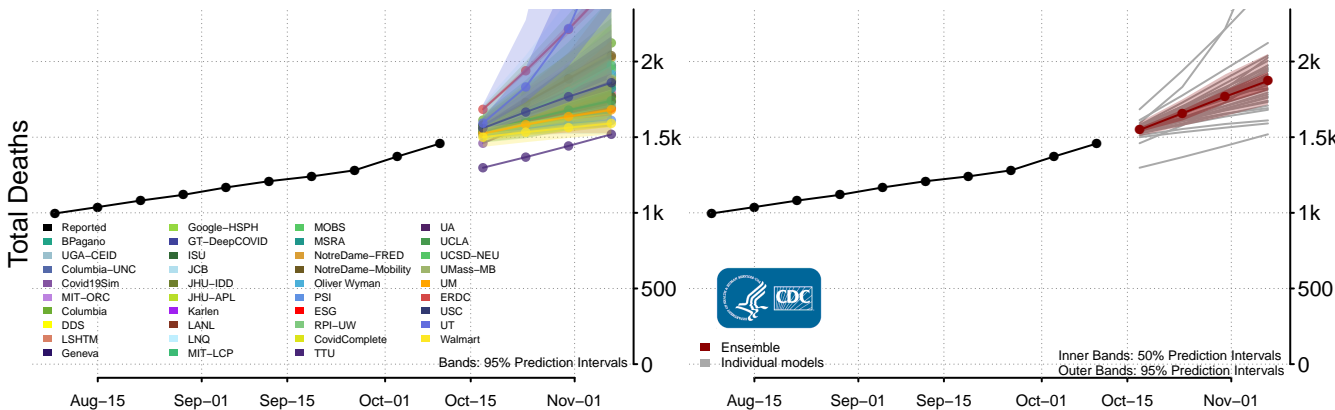
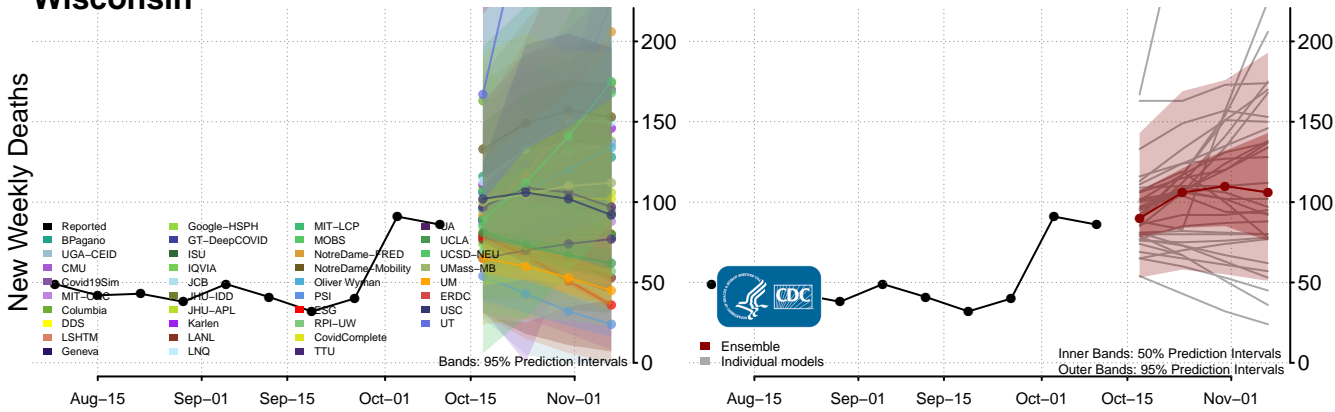
Washington



West Virginia

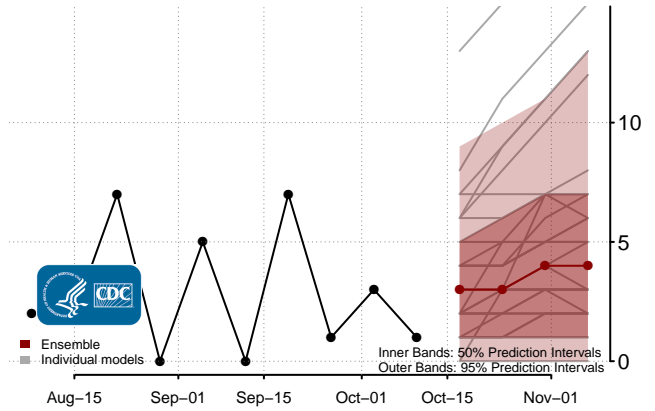
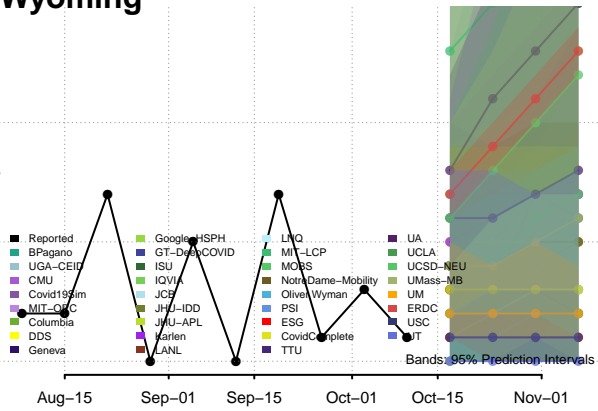


Wisconsin



Wyoming

New Weekly Deaths



Total Deaths

