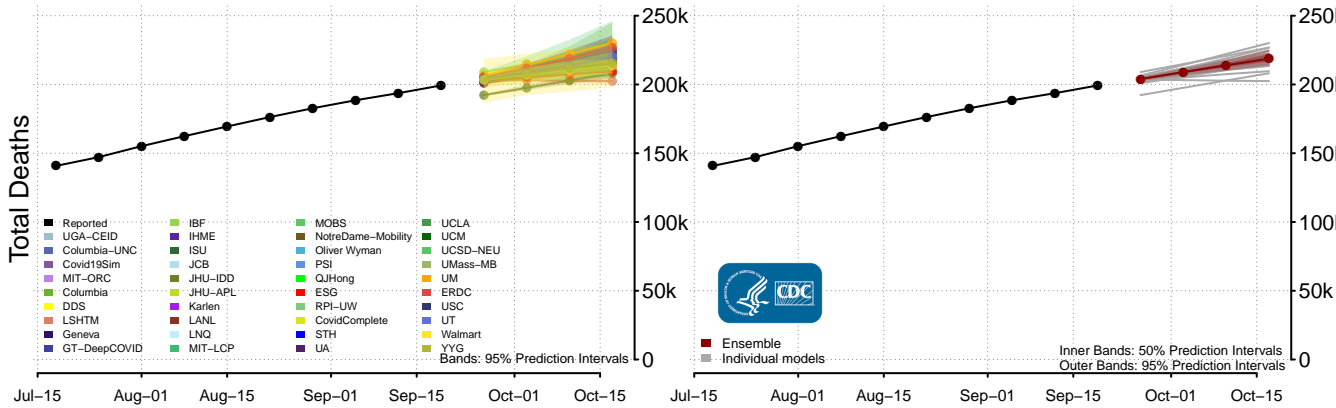
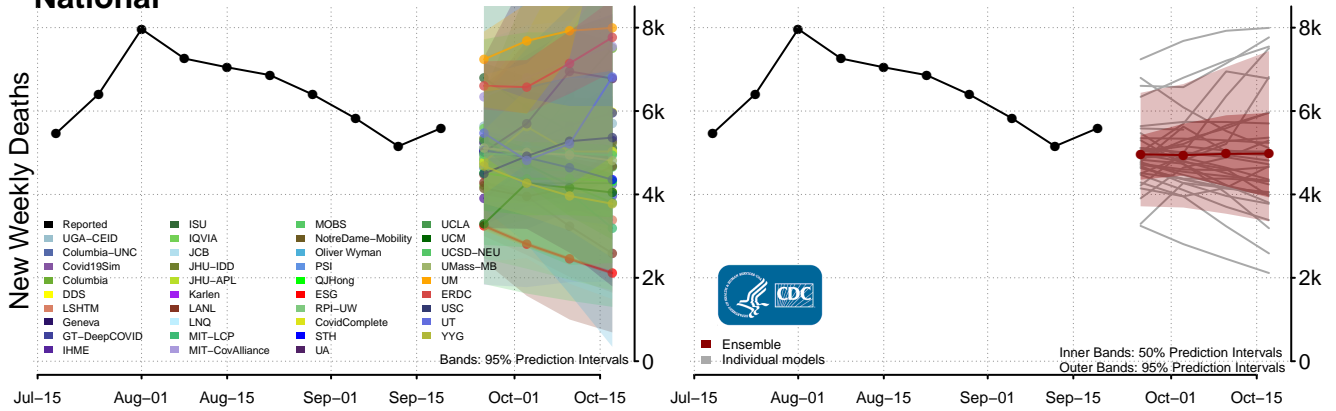
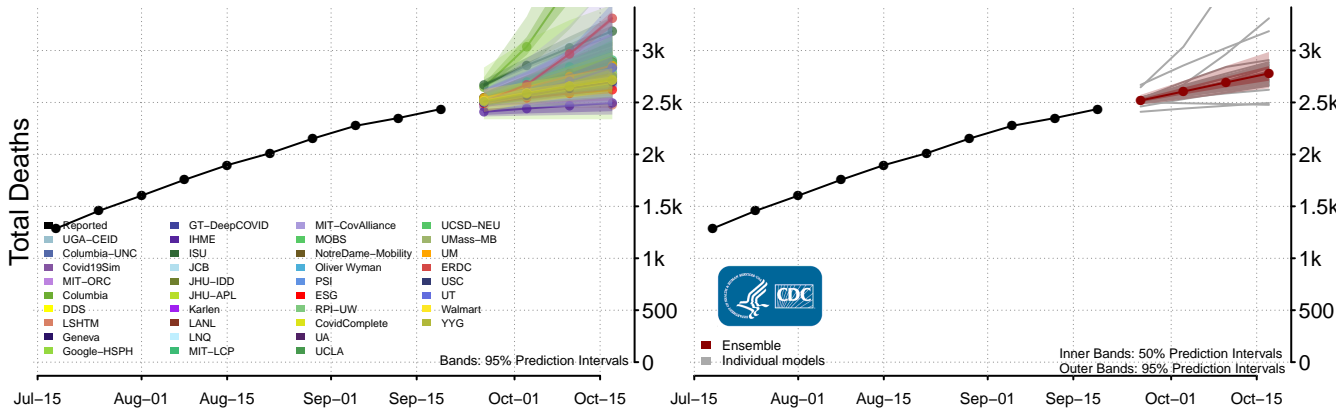
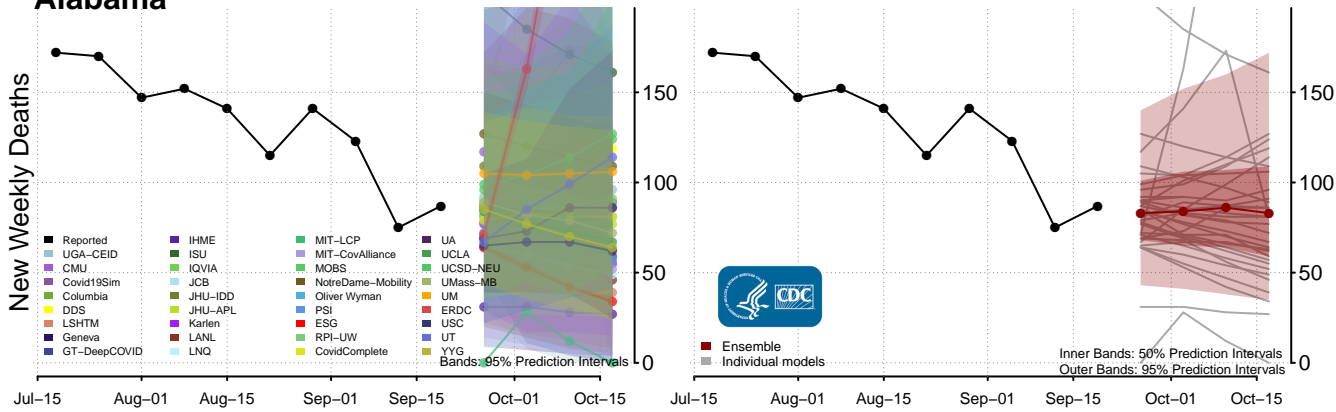


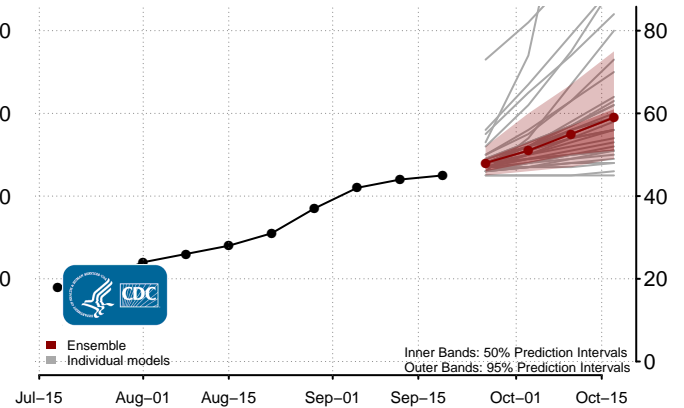
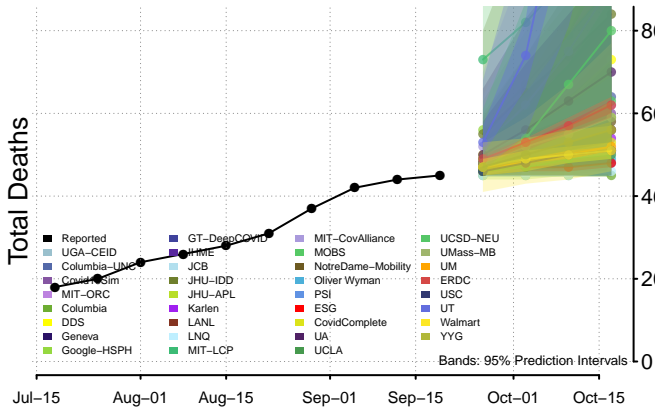
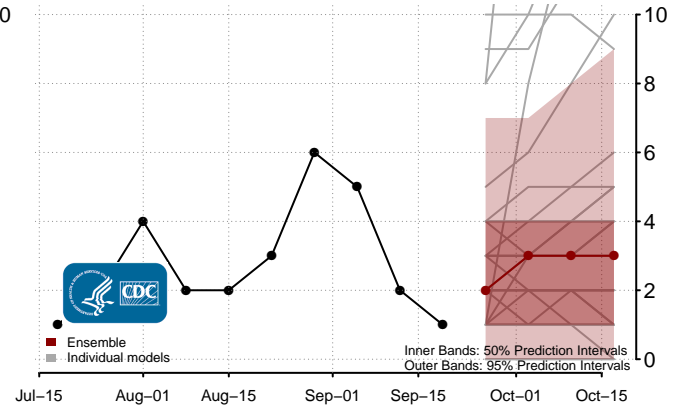
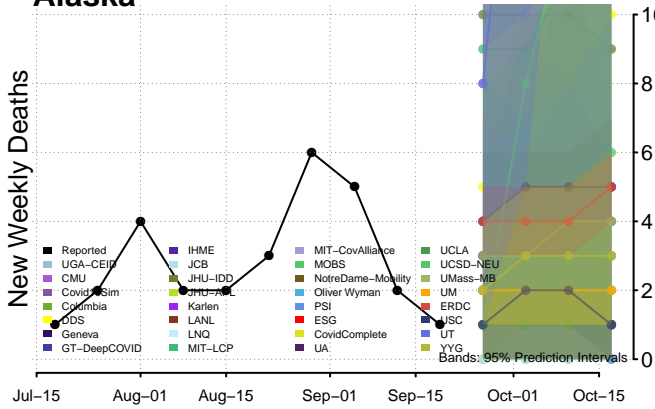
### National



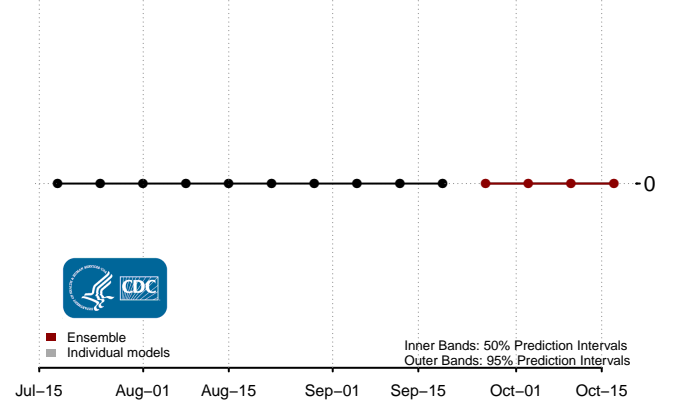
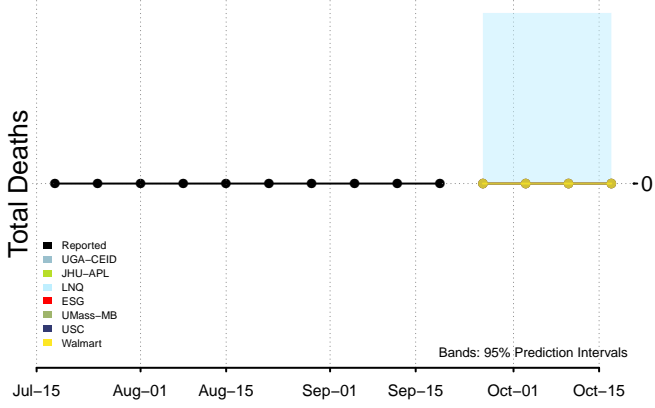
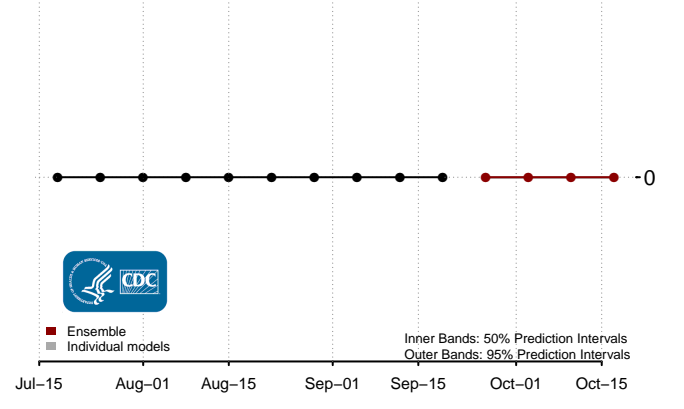
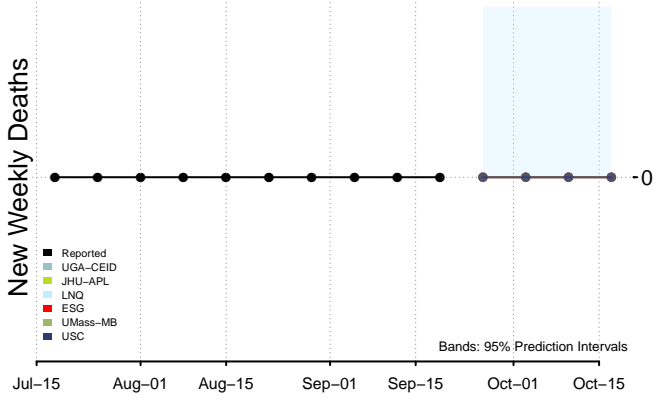
### Alabama



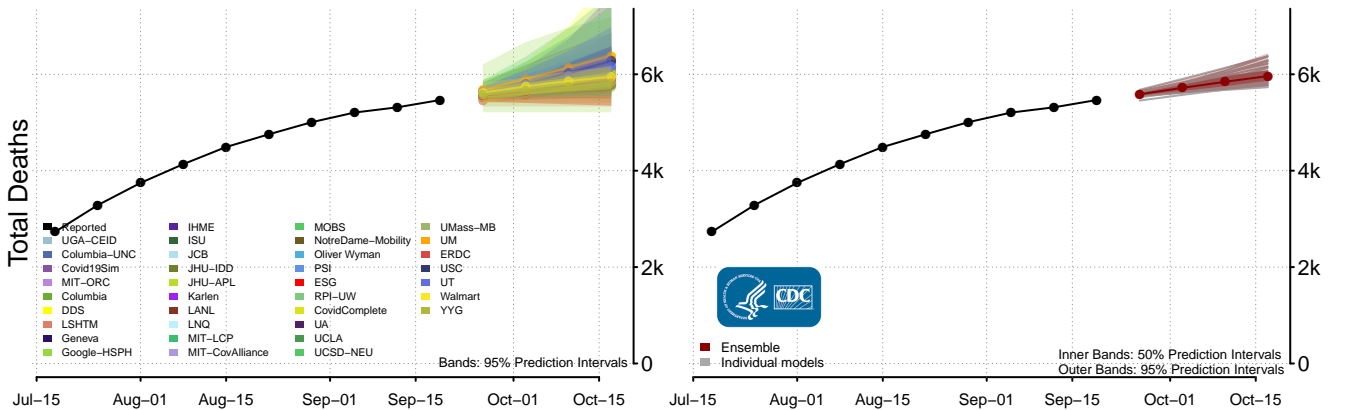
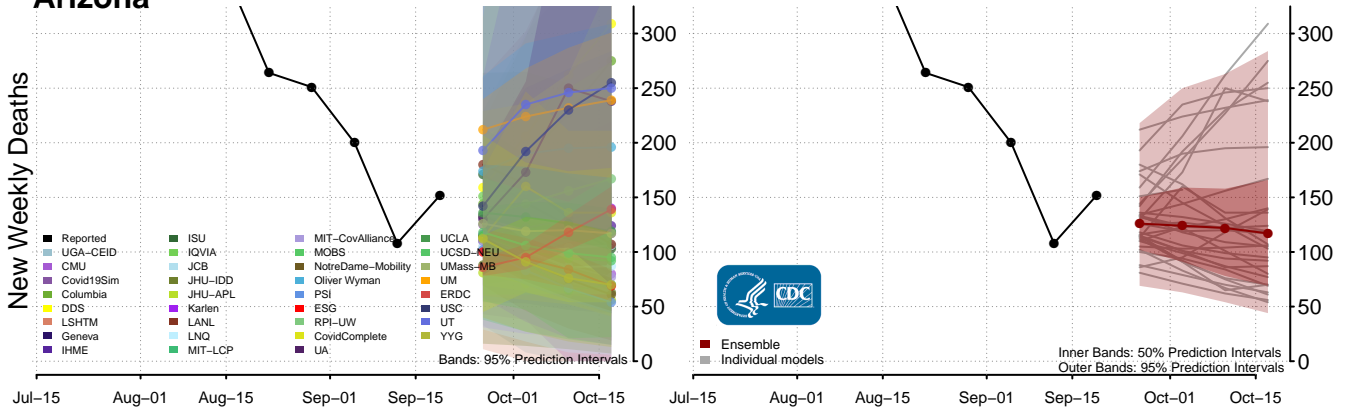
### Alaska



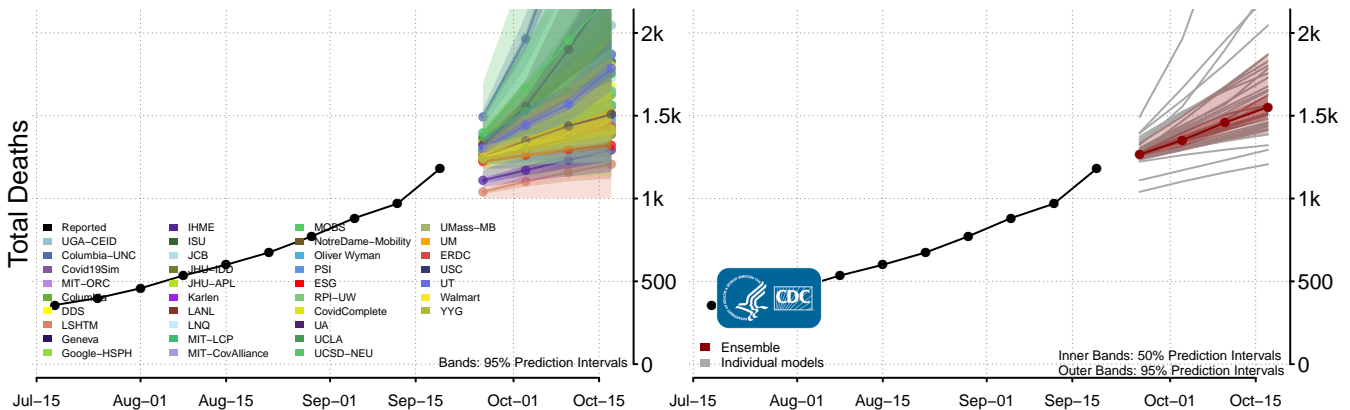
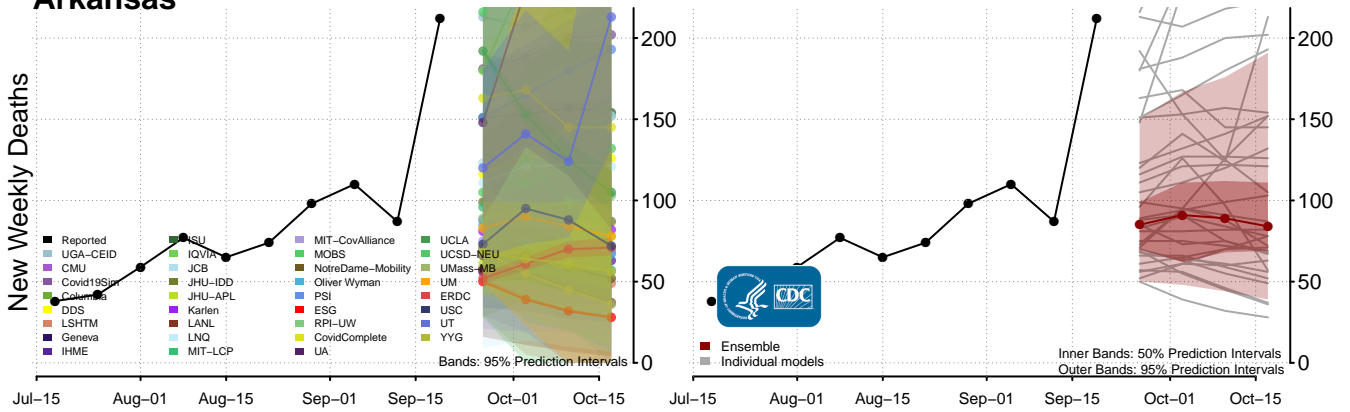
### American Samoa

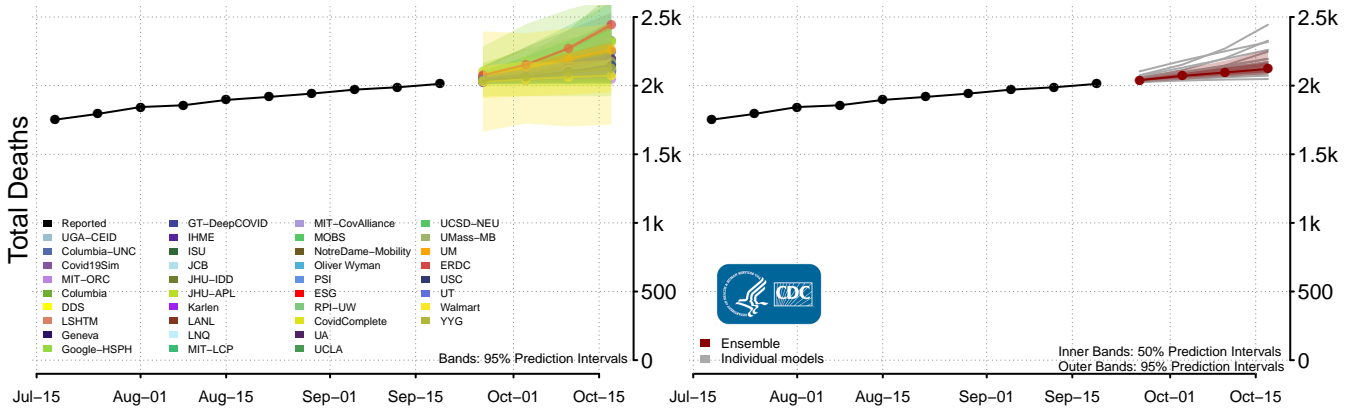
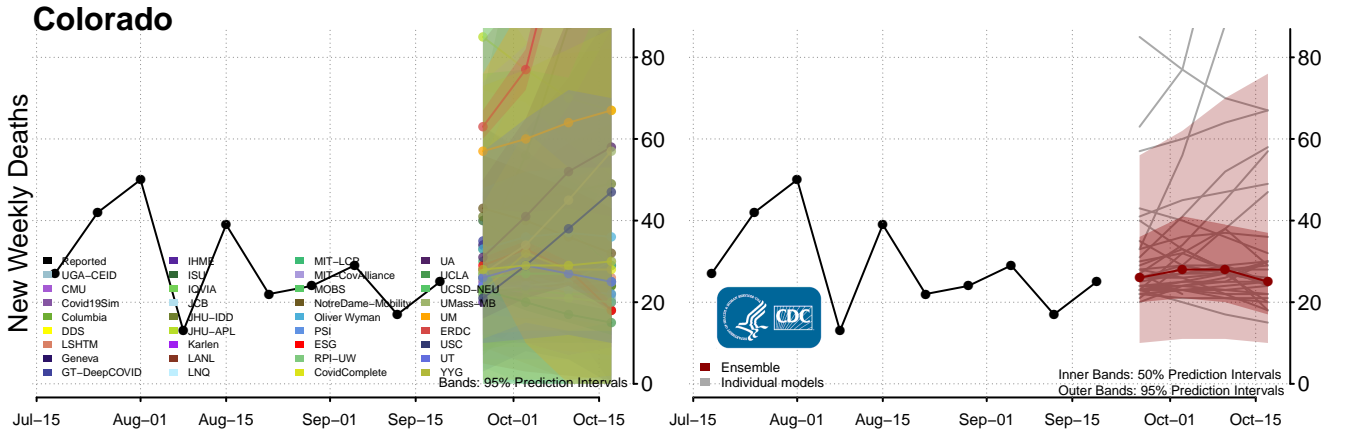
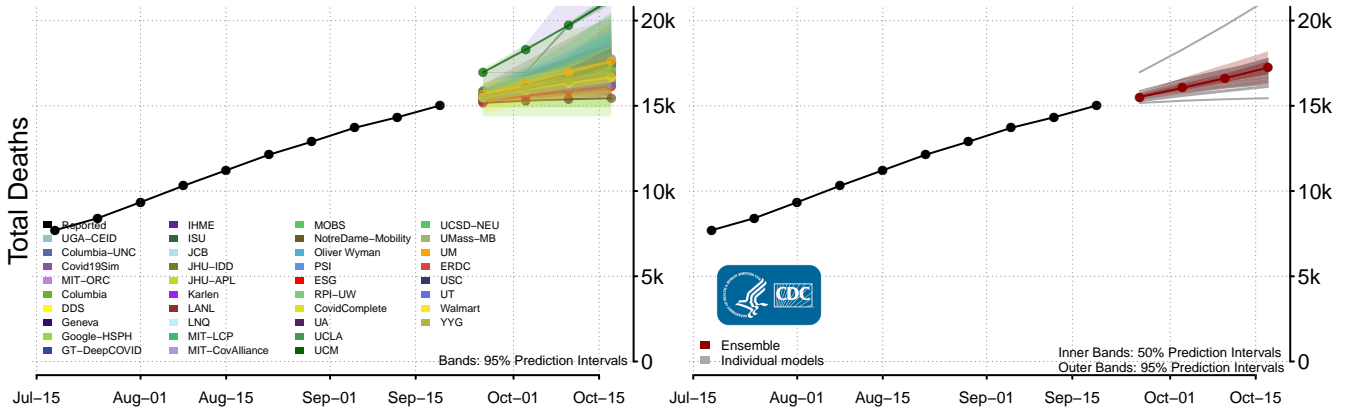
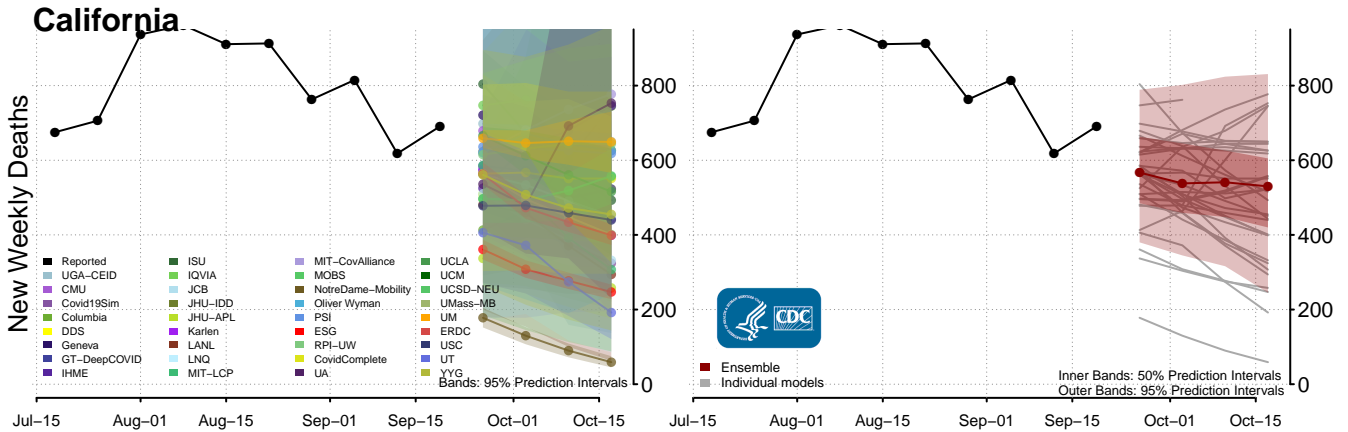


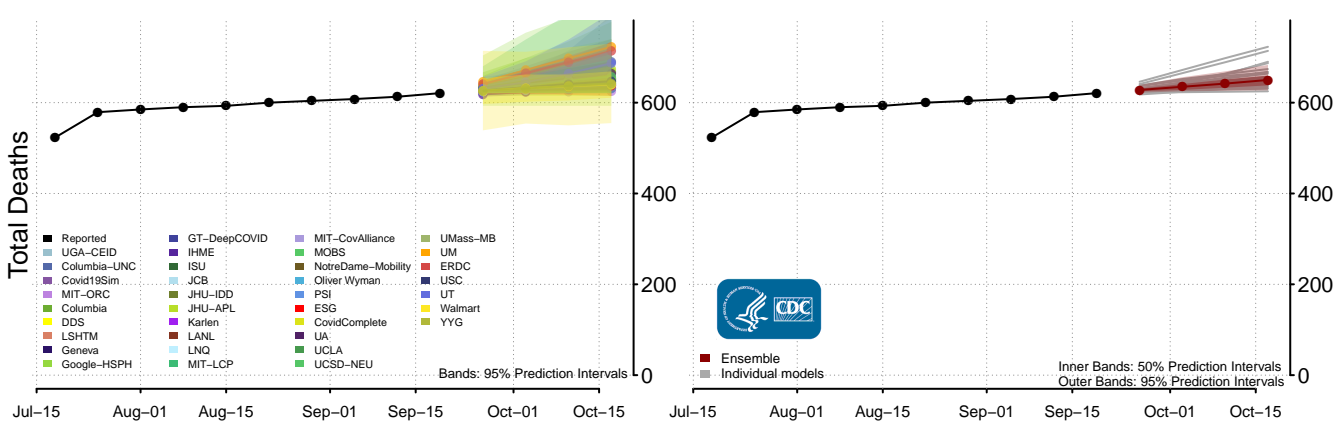
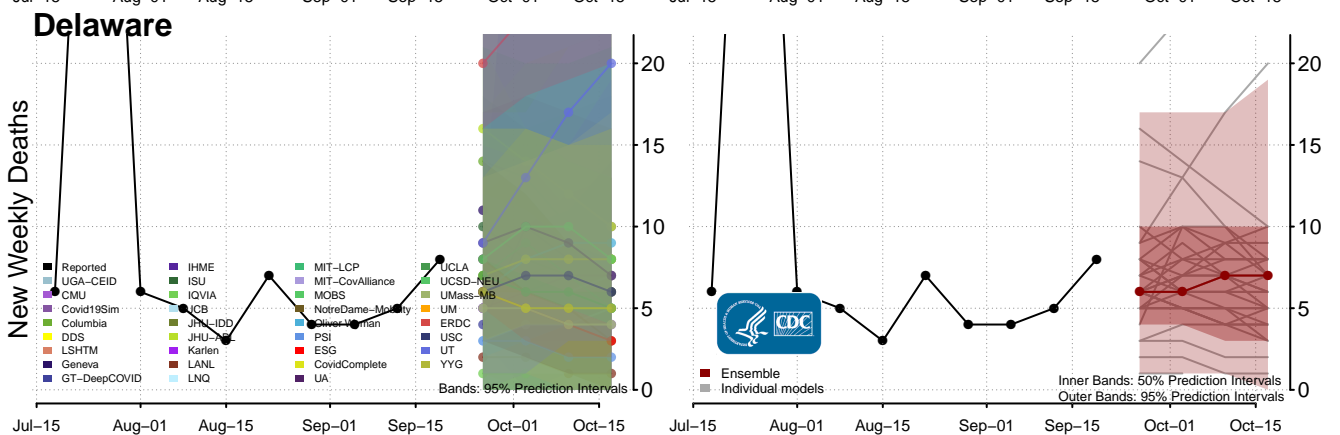
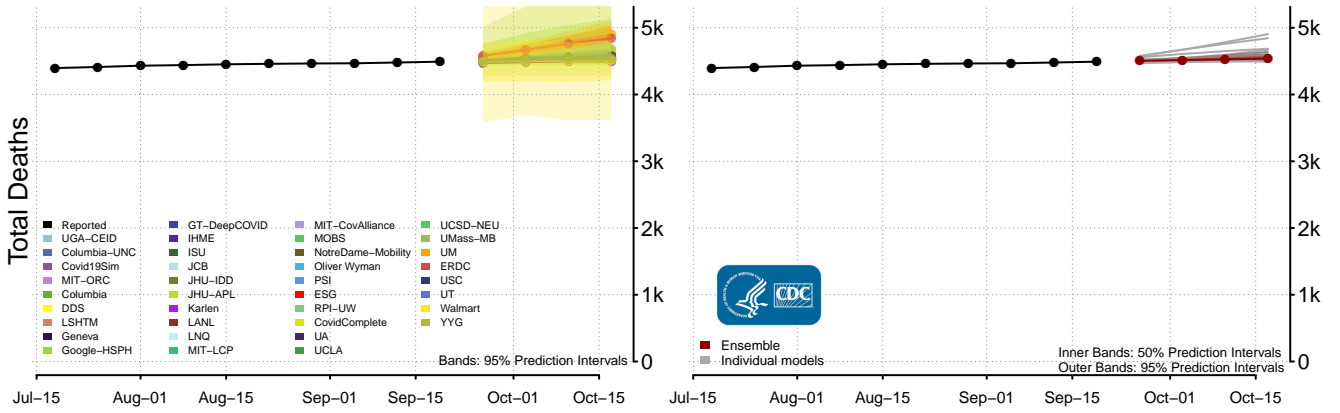
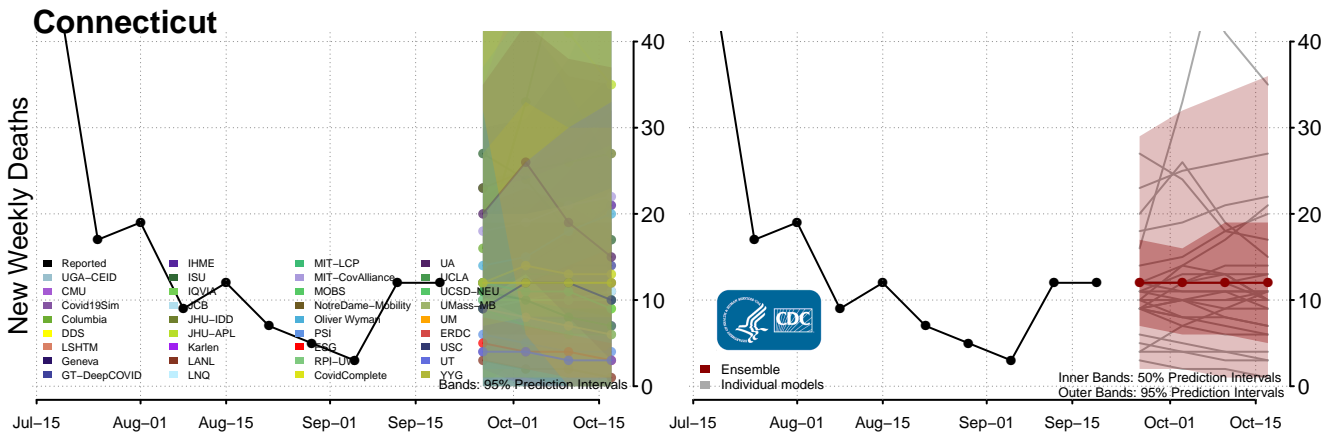
### Arizona



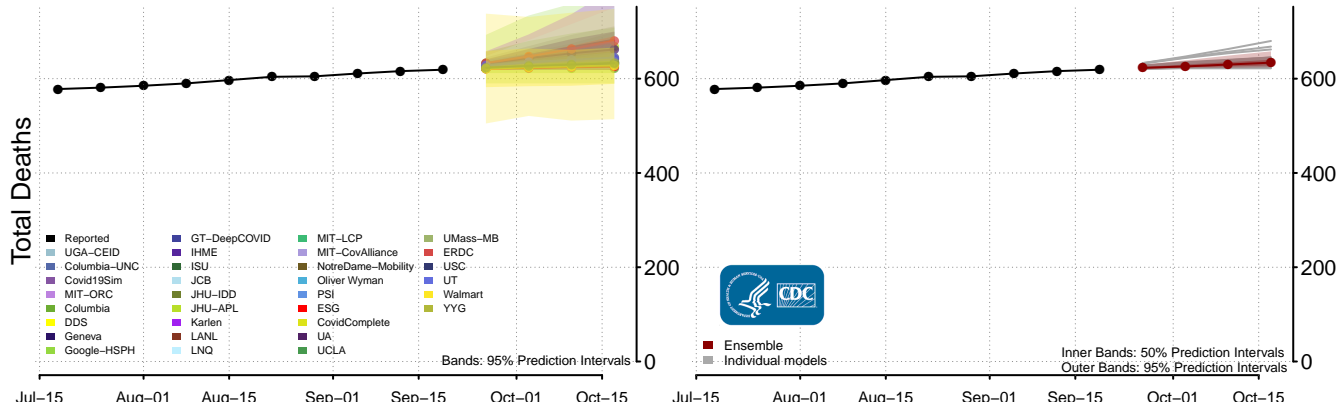
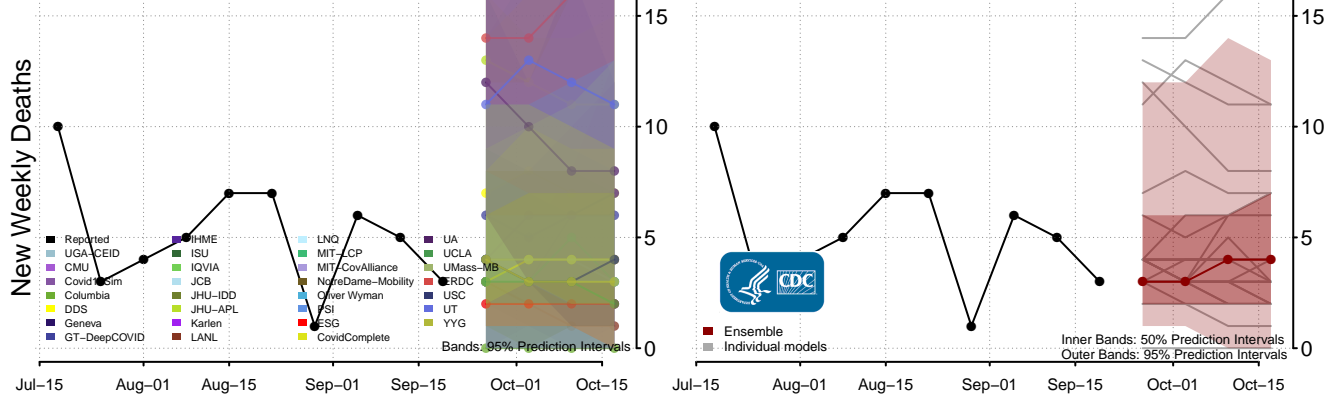
### Arkansas



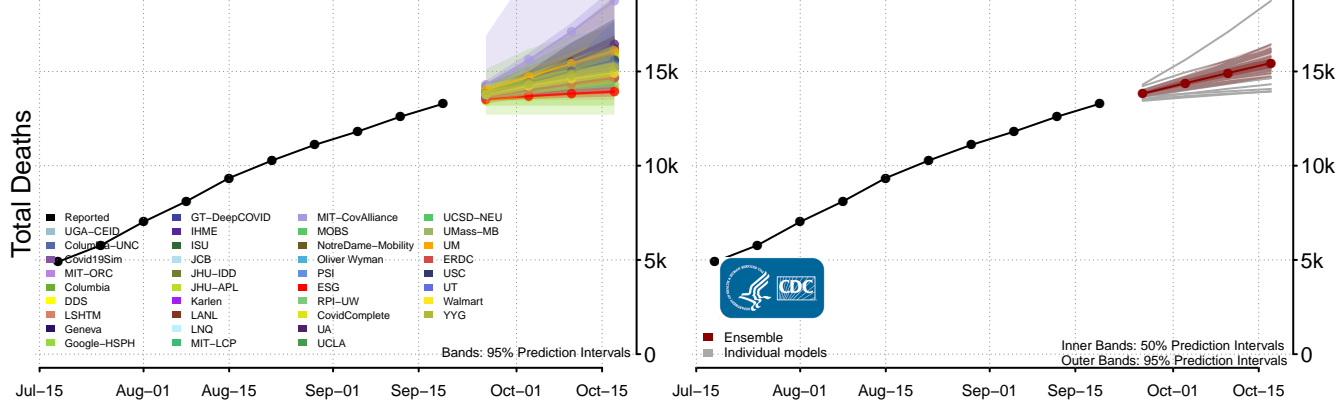
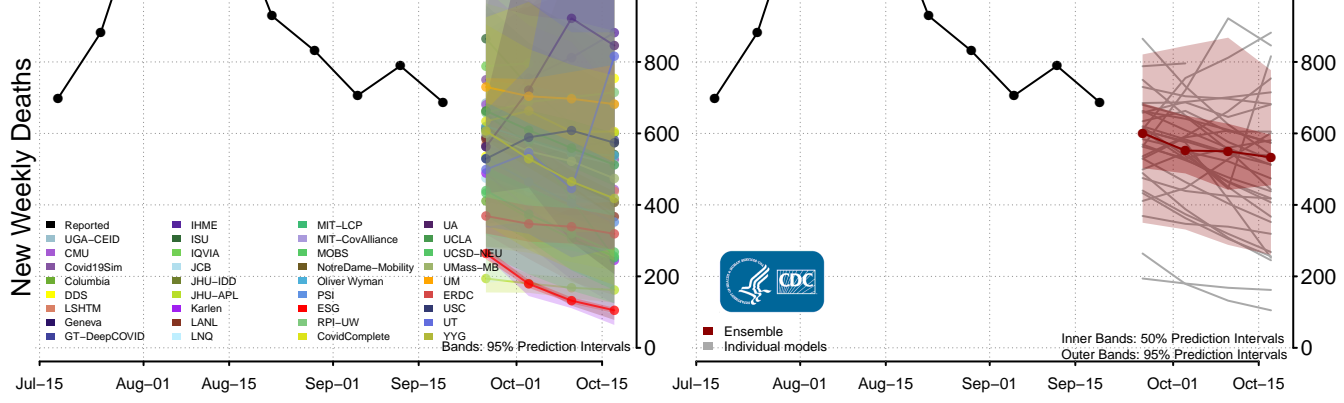


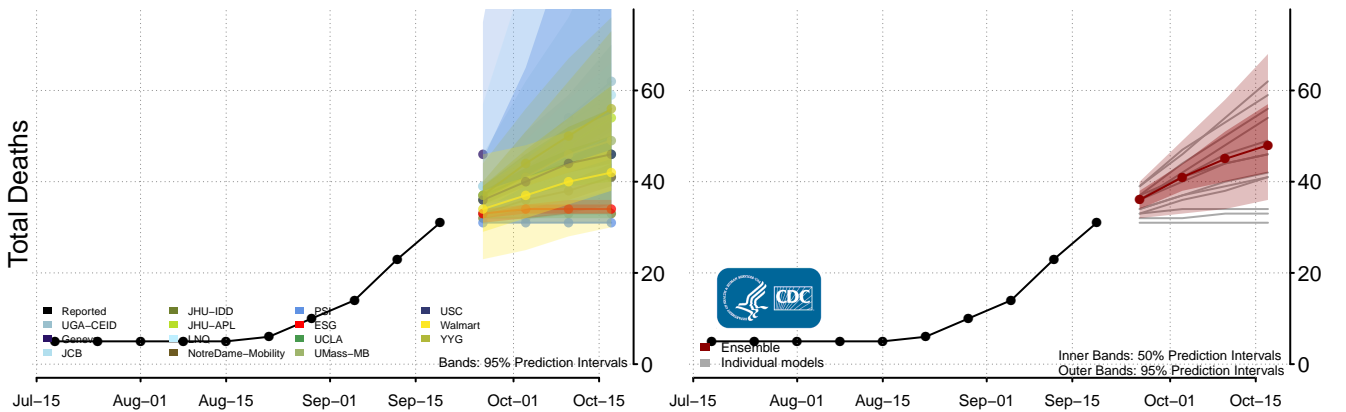
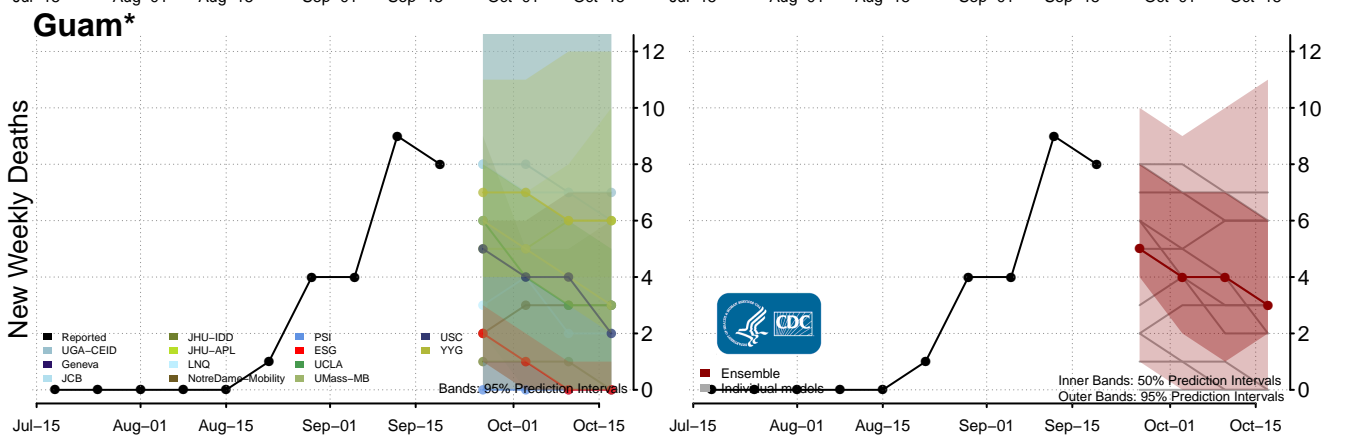
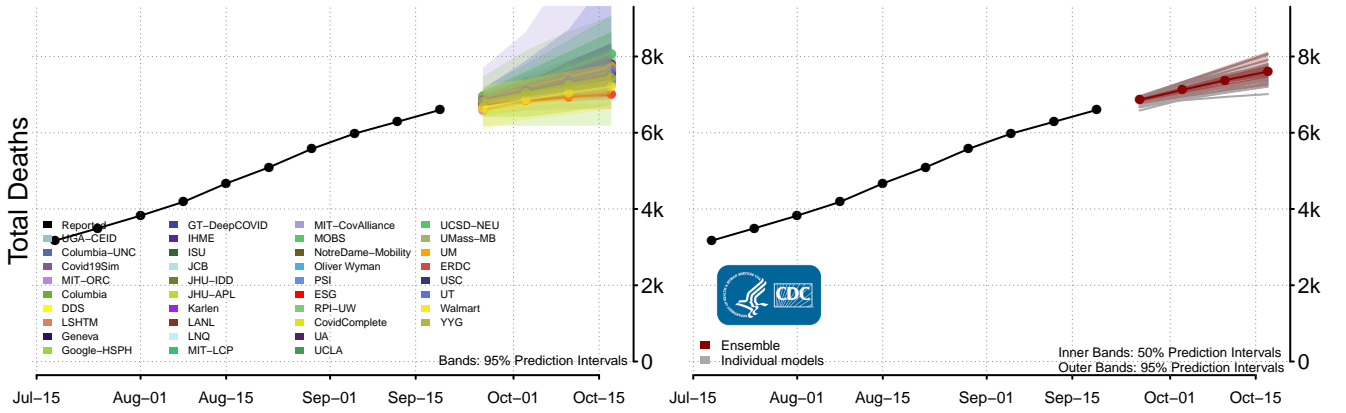
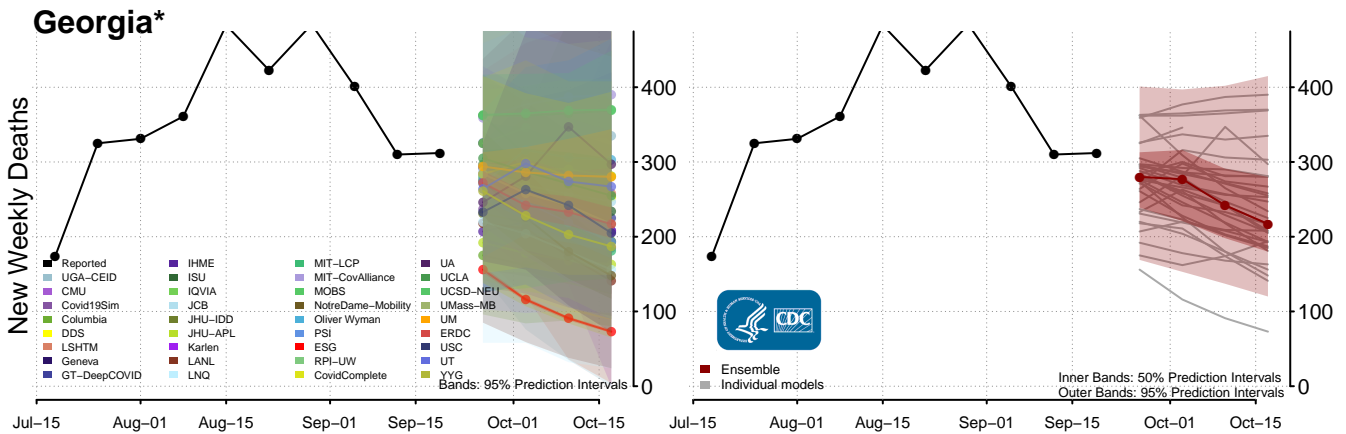


### District of Columbia



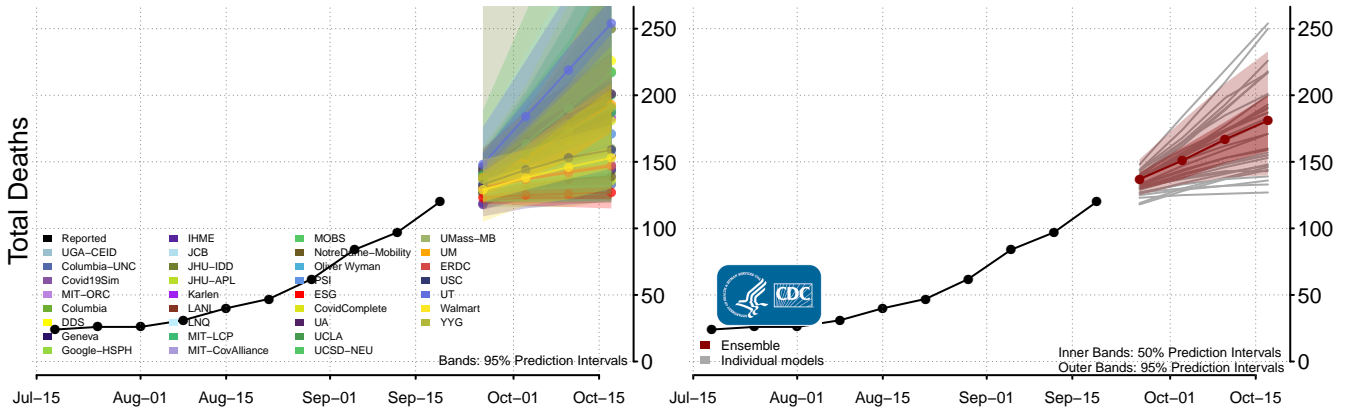
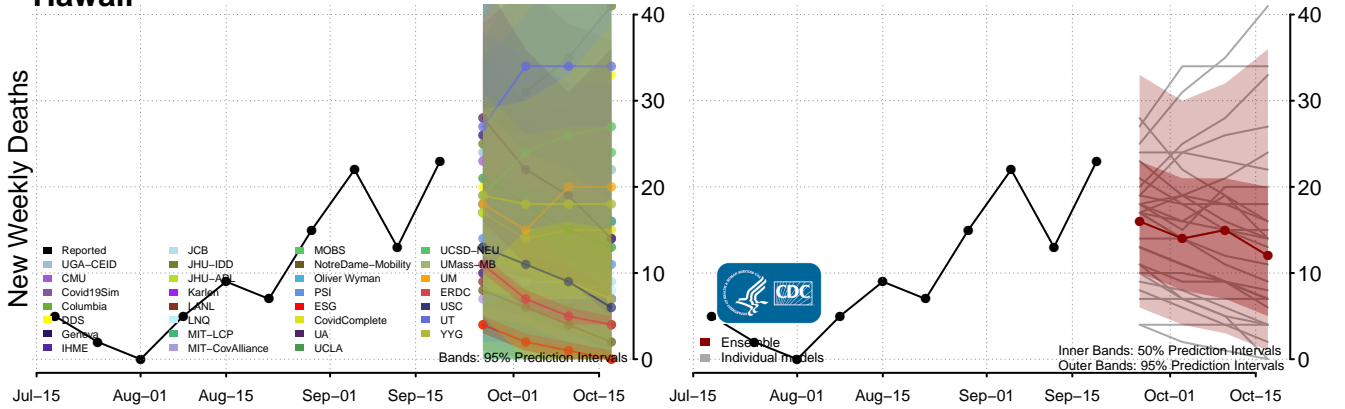
### Florida



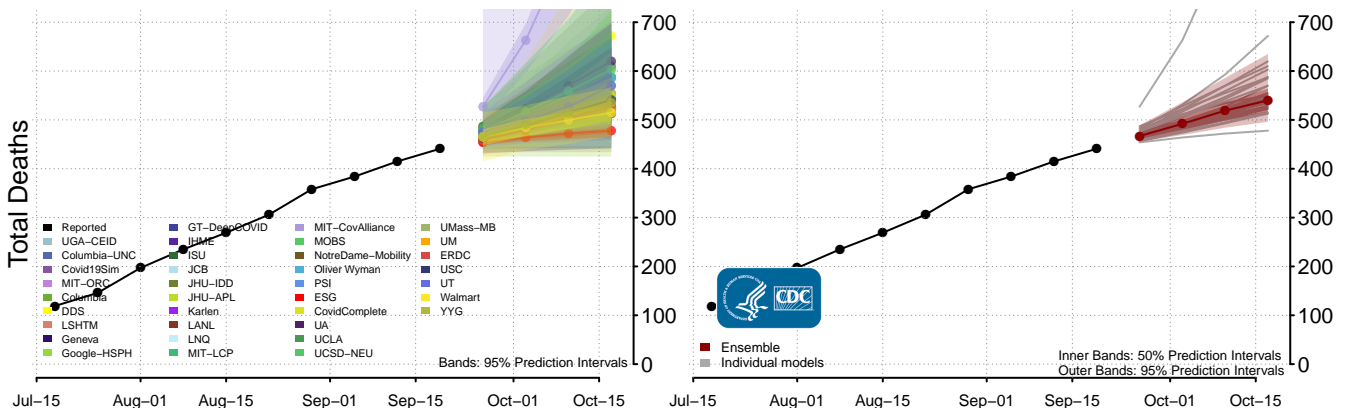
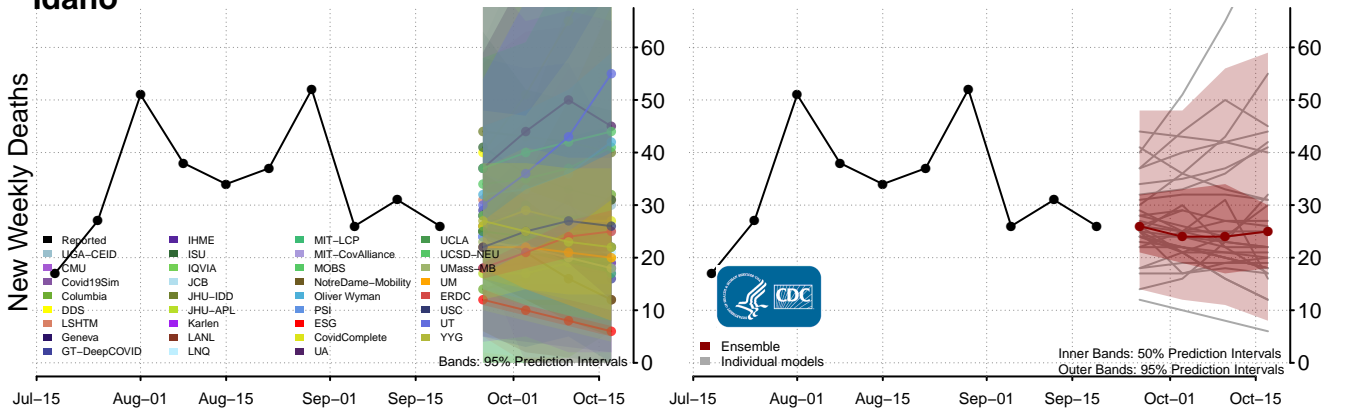


\*New weekly deaths may decrease in this location over the next four weeks. For these locations, the ensemble forecast indicates a probability of 0.75 or greater that fewer deaths will be reported in week four of the forecast than in the last reported week.

### Hawaii\*



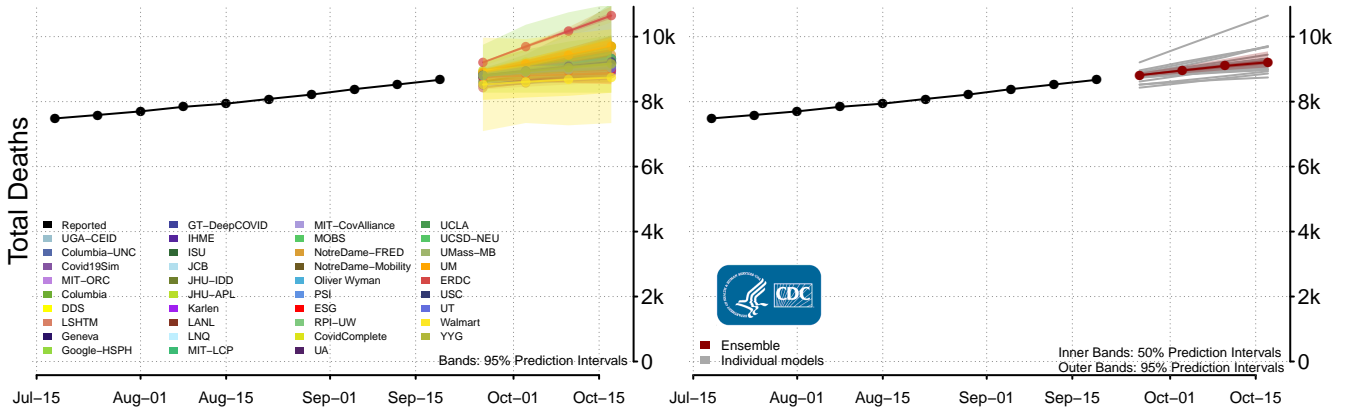
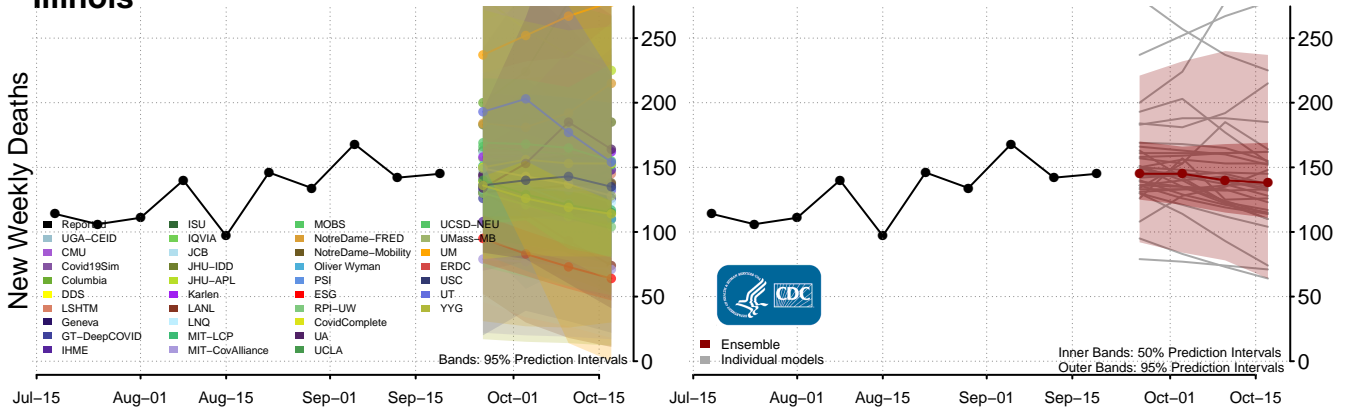
### Idaho



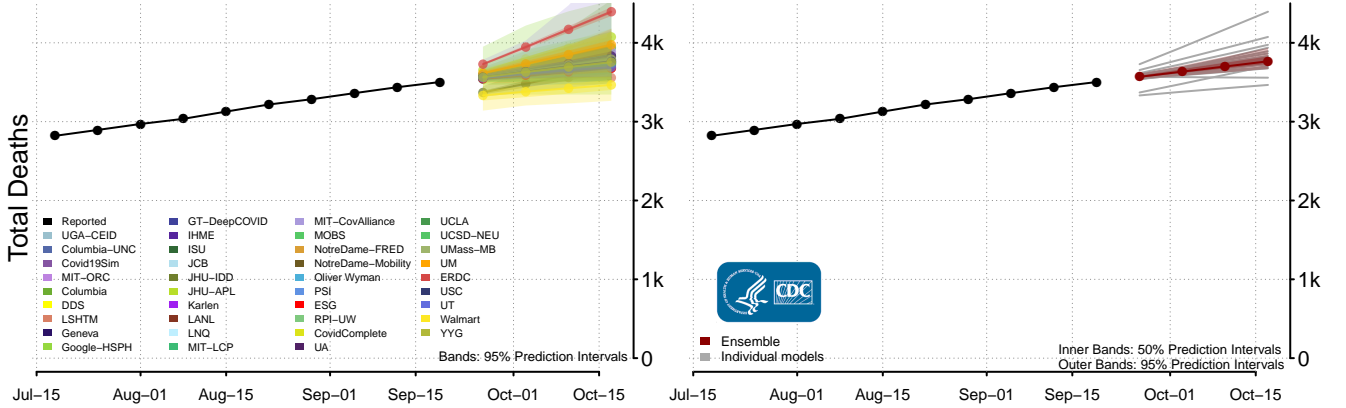
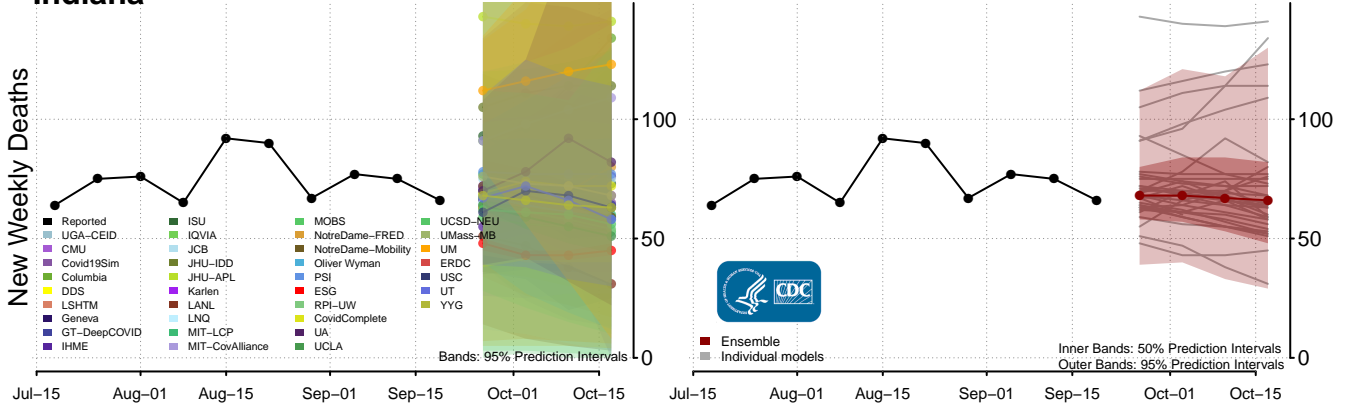
\*New weekly deaths may decrease in this location over the next four weeks. For these locations, the ensemble forecast indicates a probability of 0.75 or greater that fewer deaths will be reported in week four of the forecast than in the last reported week.

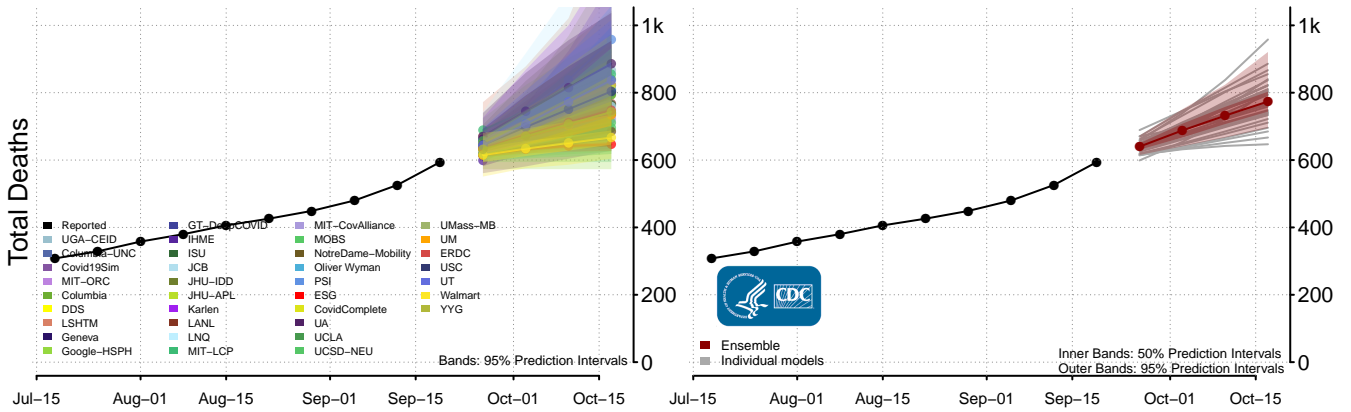
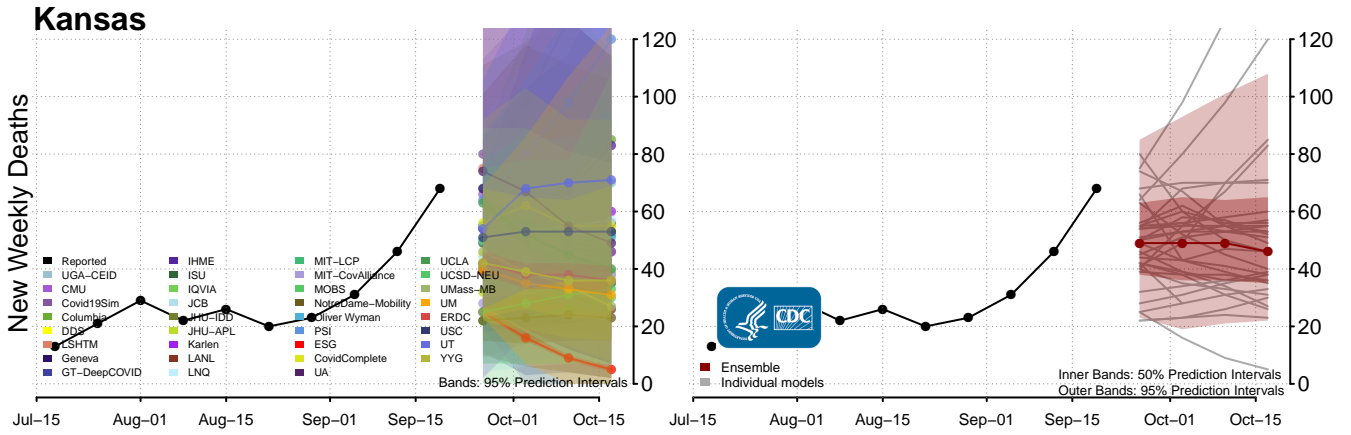
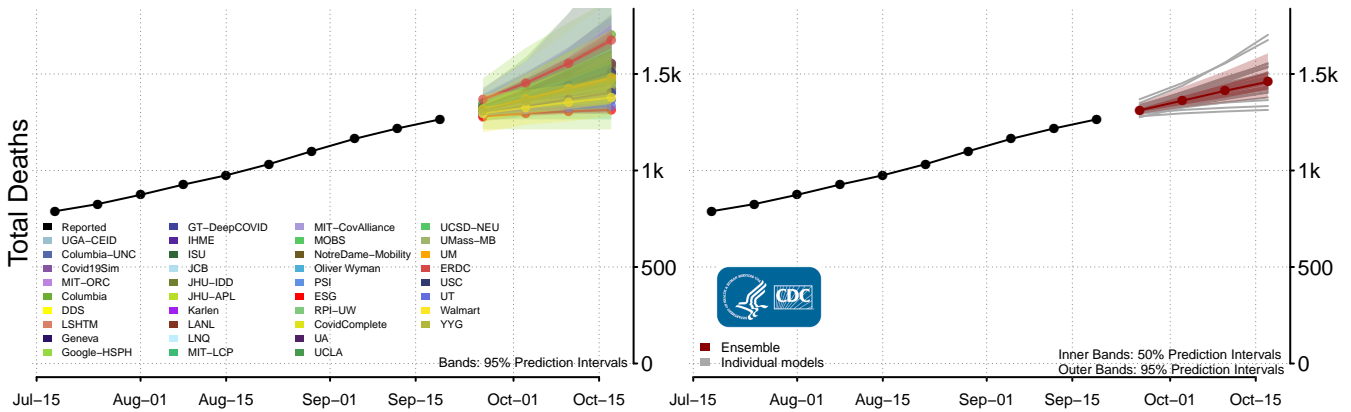
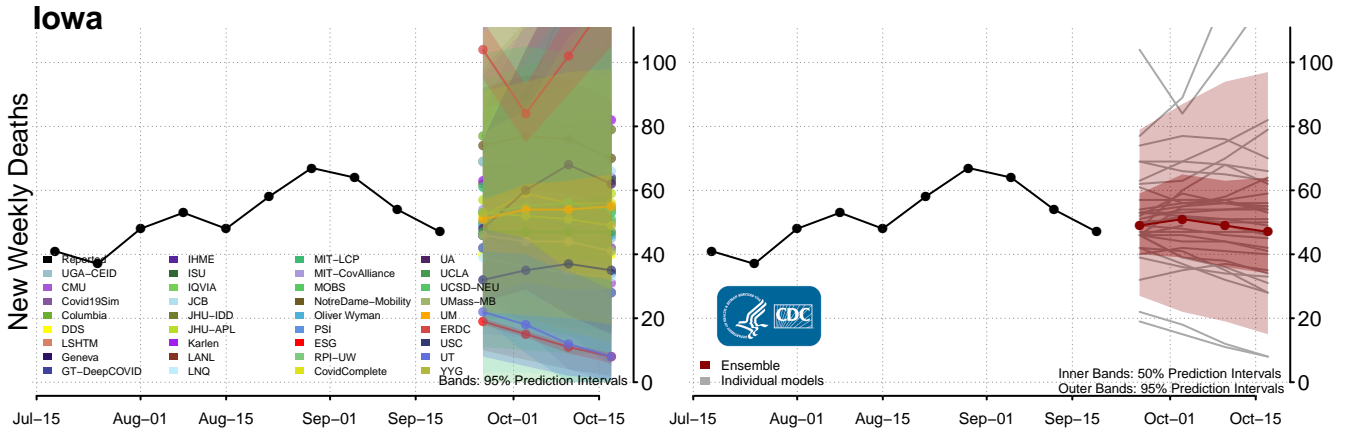


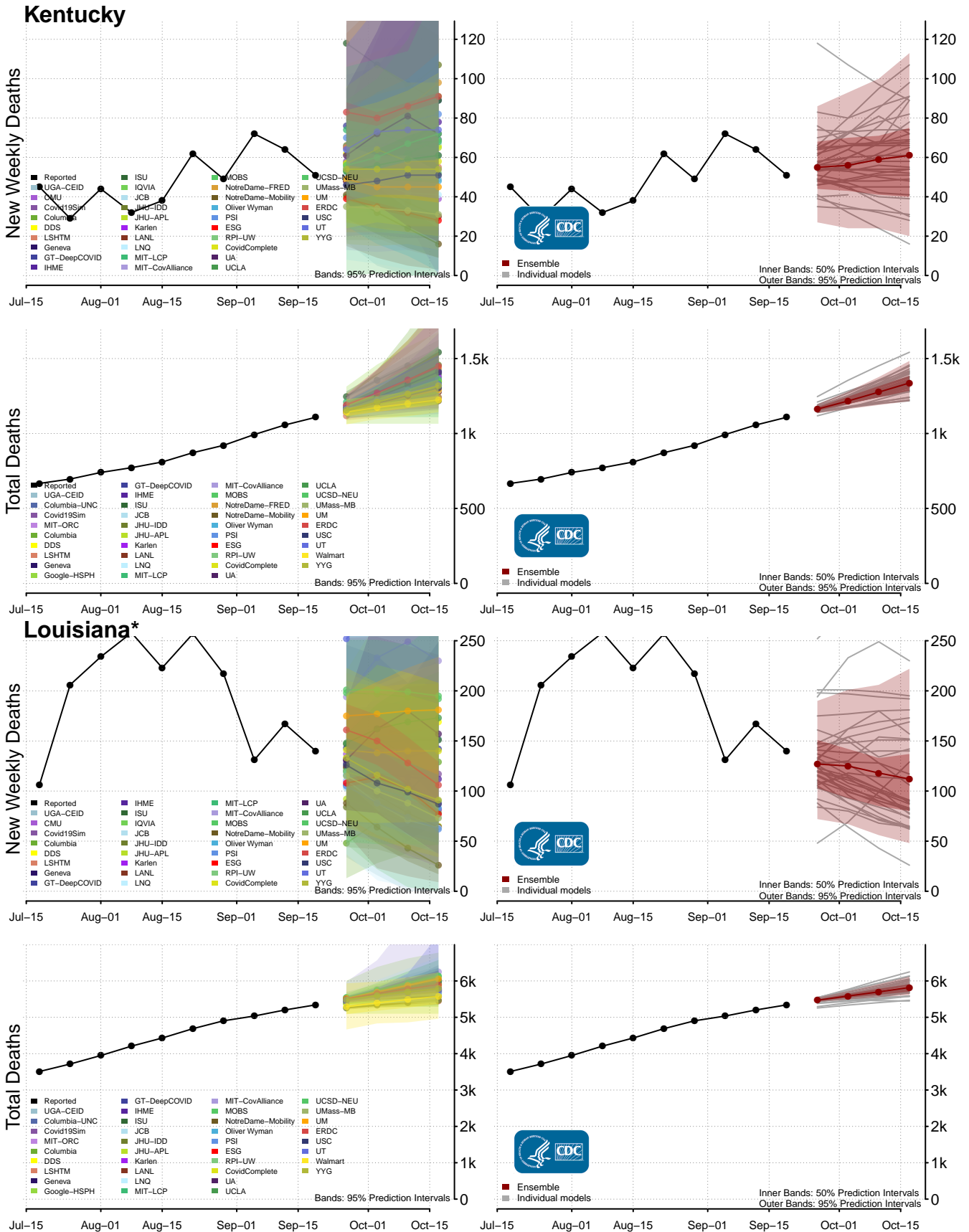
### Illinois



### Indiana

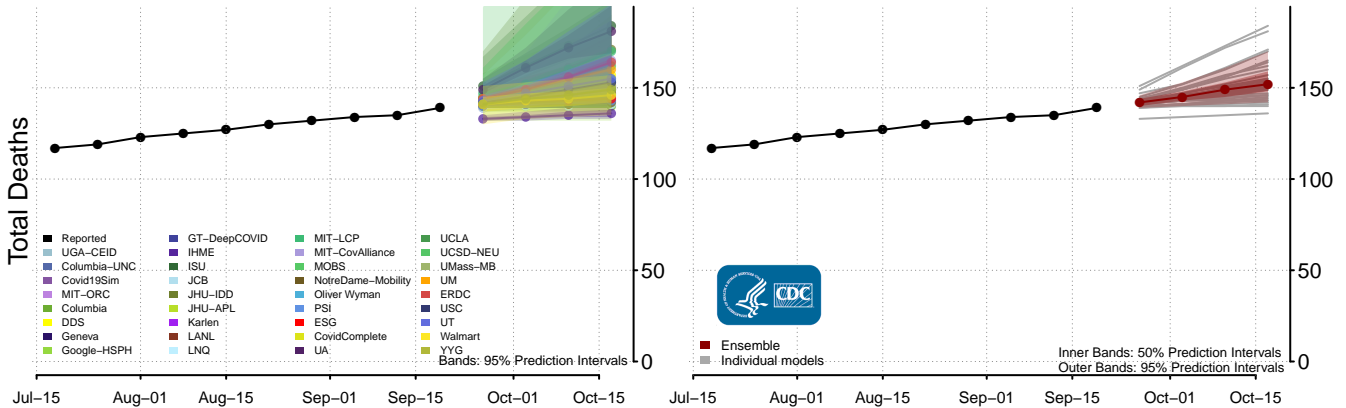
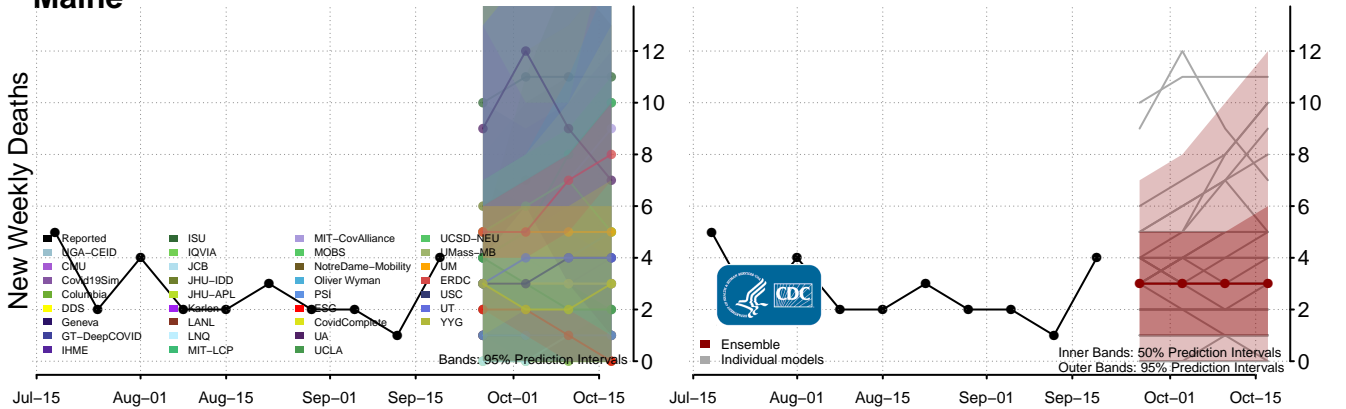




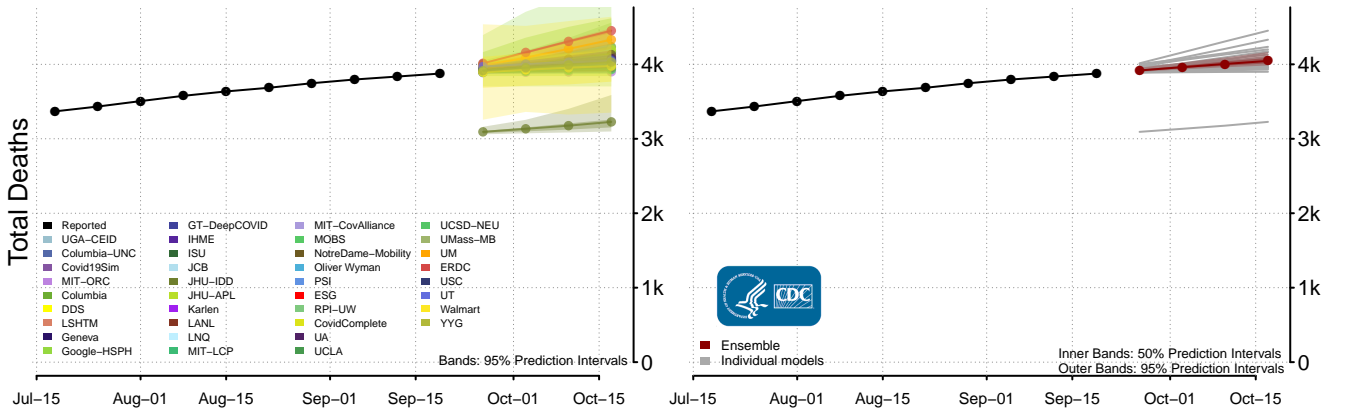
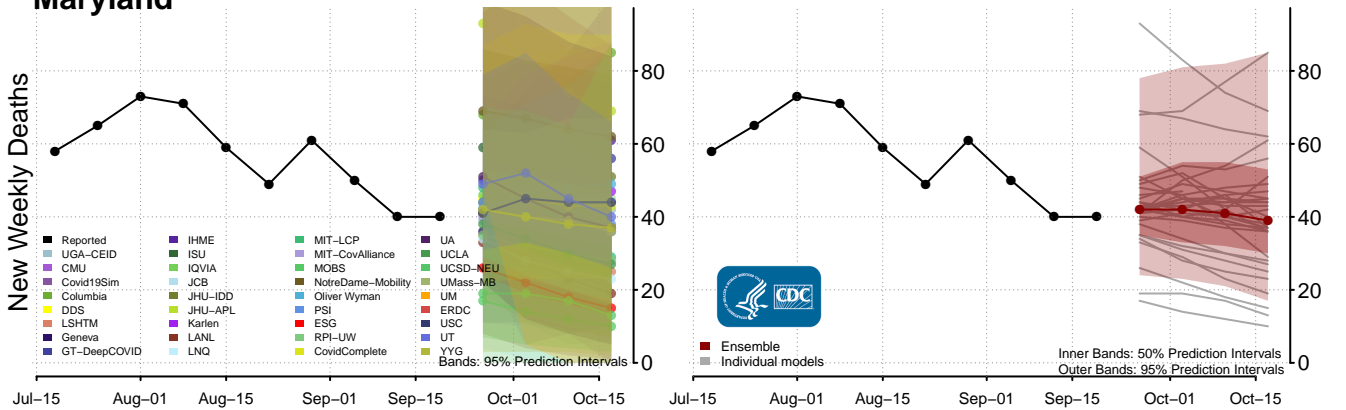


\*New weekly deaths may decrease in this location over the next four weeks. For these locations, the ensemble forecast indicates a probability of 0.75 or greater that fewer deaths will be reported in week four of the forecast than in the last reported week.

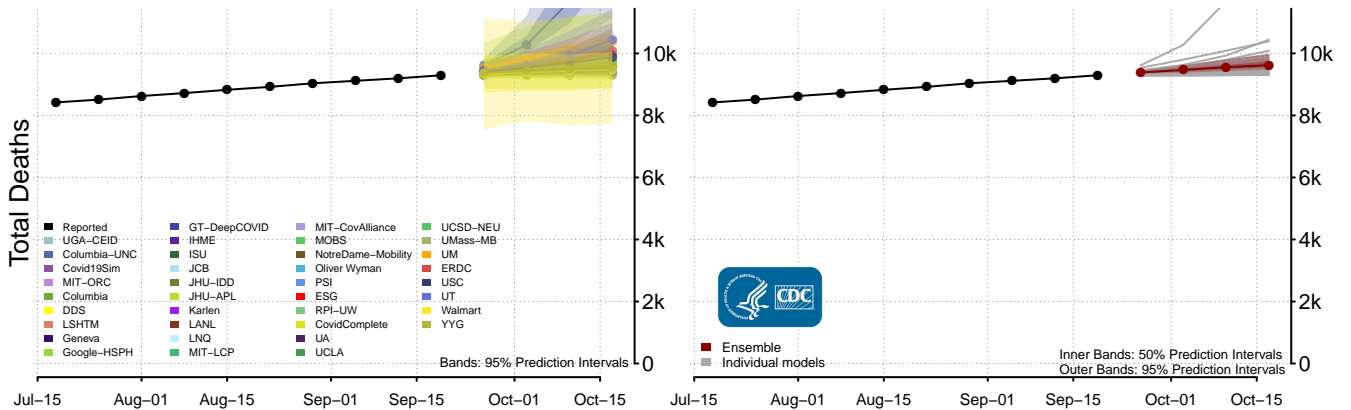
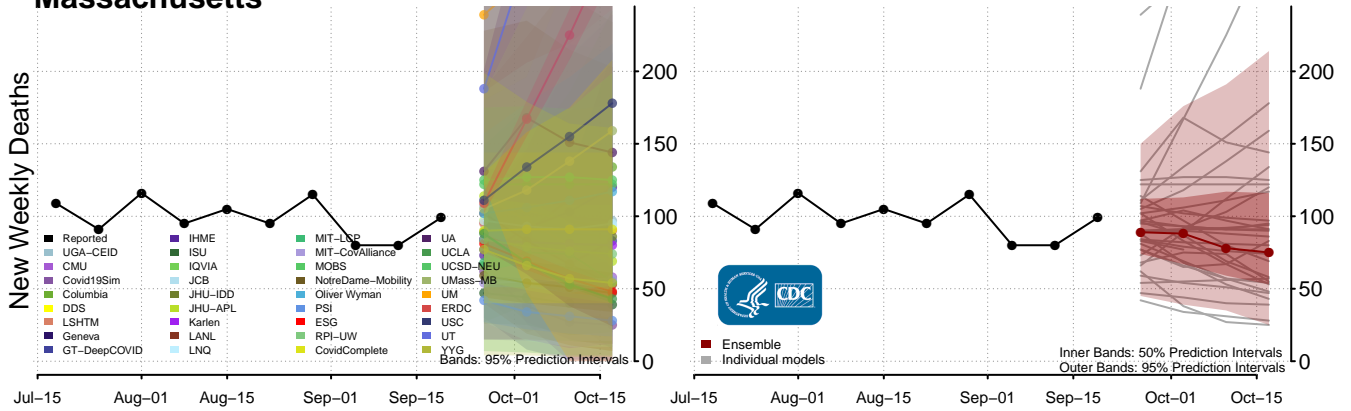
# Maine



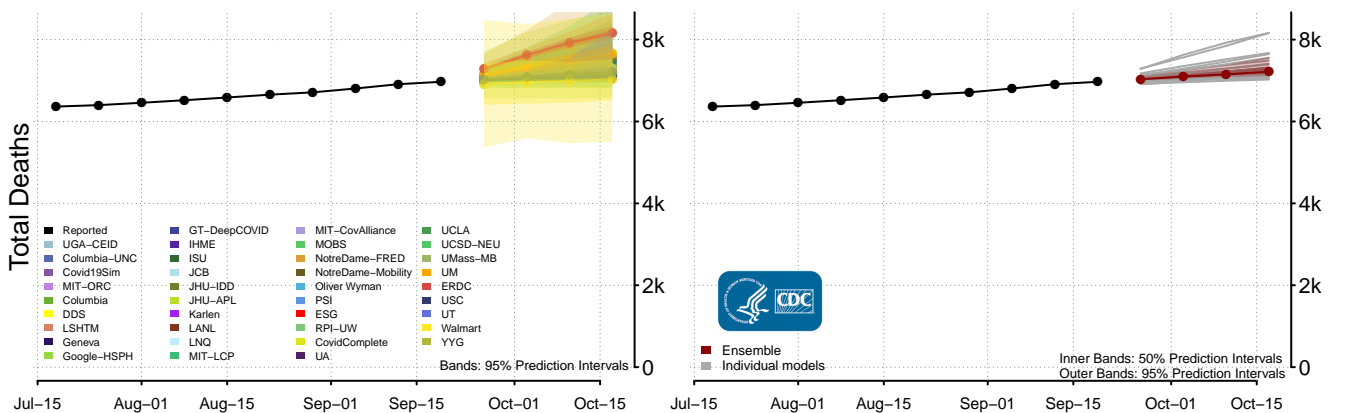
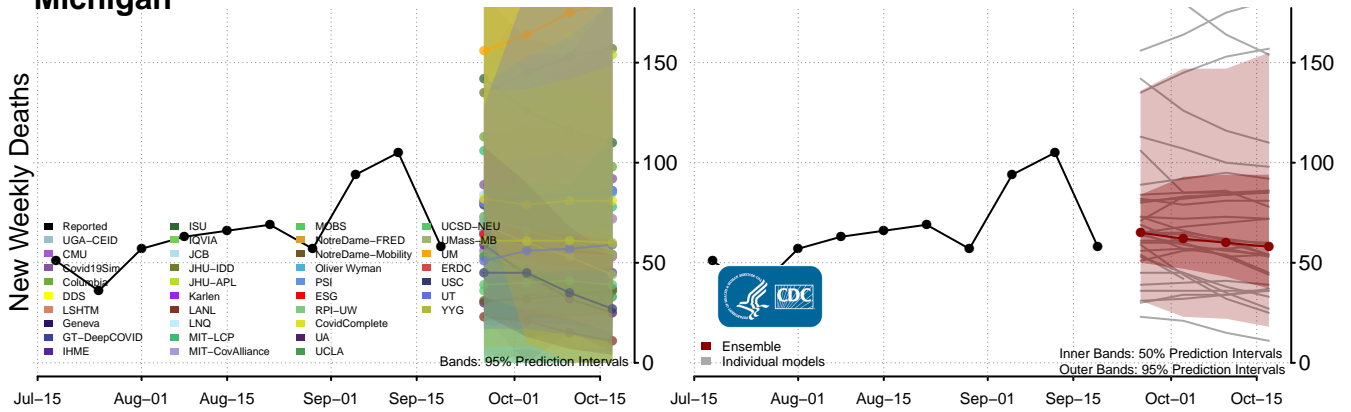
# Maryland



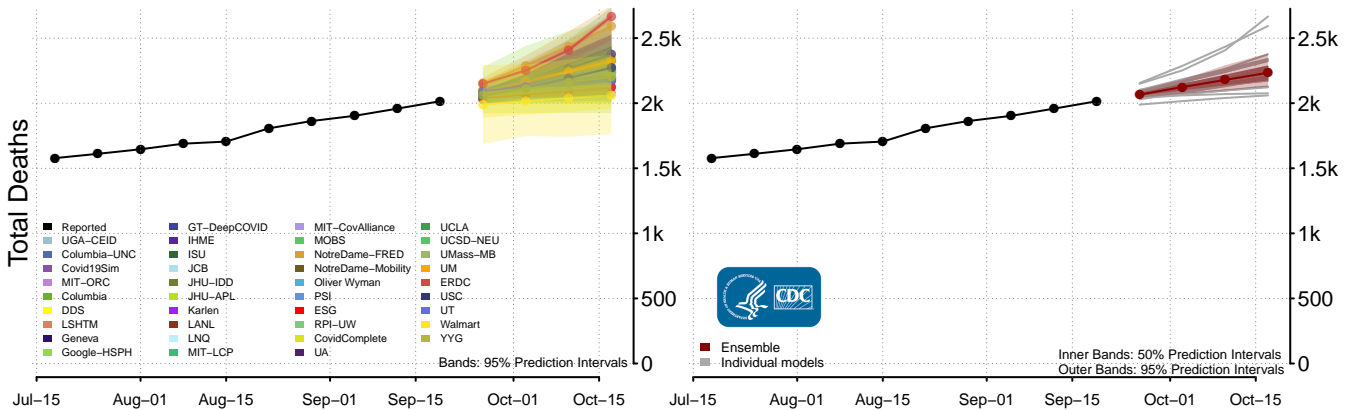
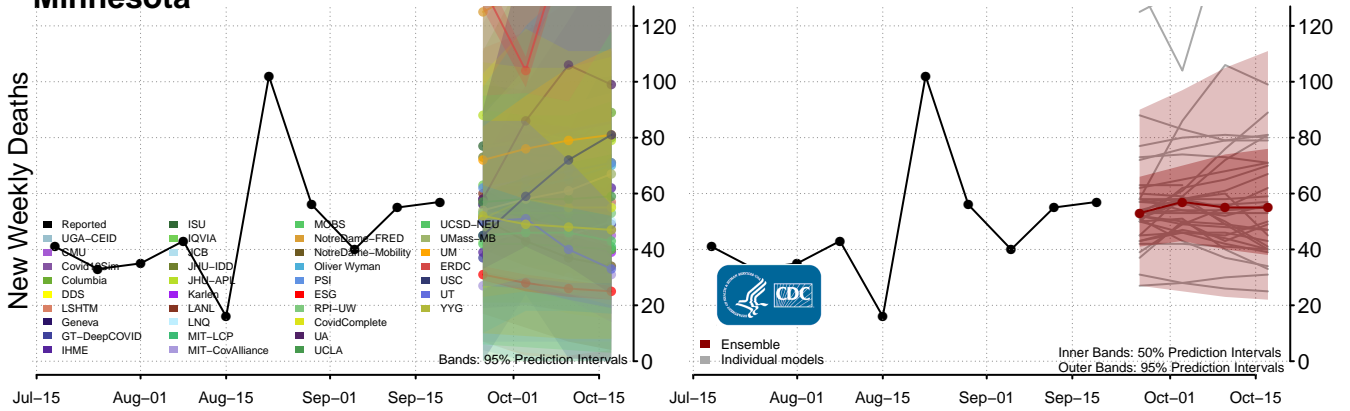
### Massachusetts



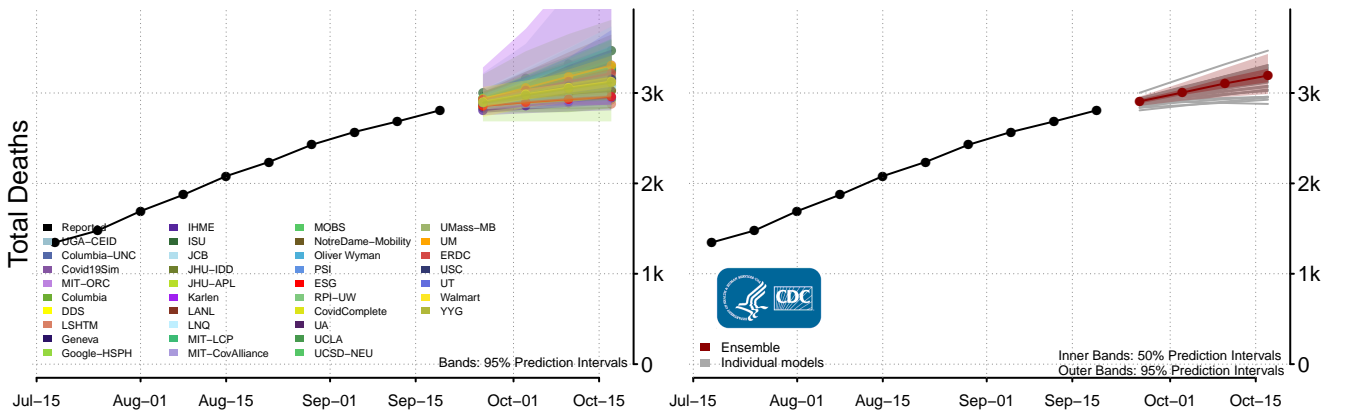
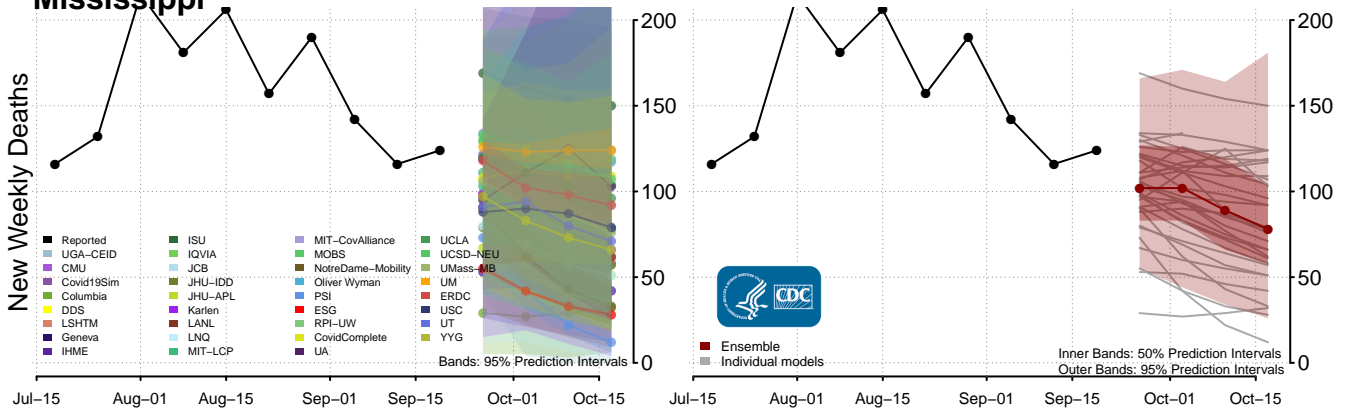
### Michigan



### Minnesota

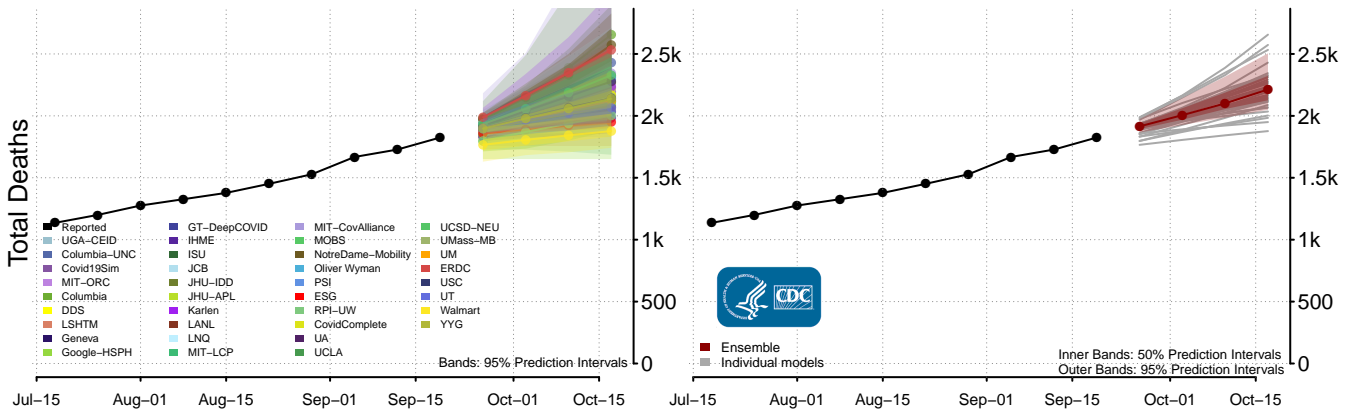
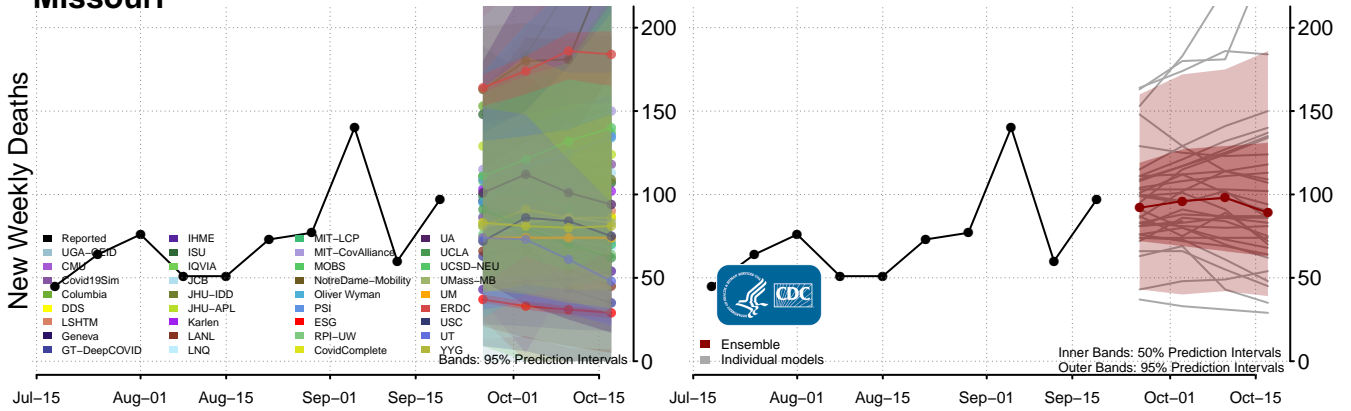


### Mississippi\*

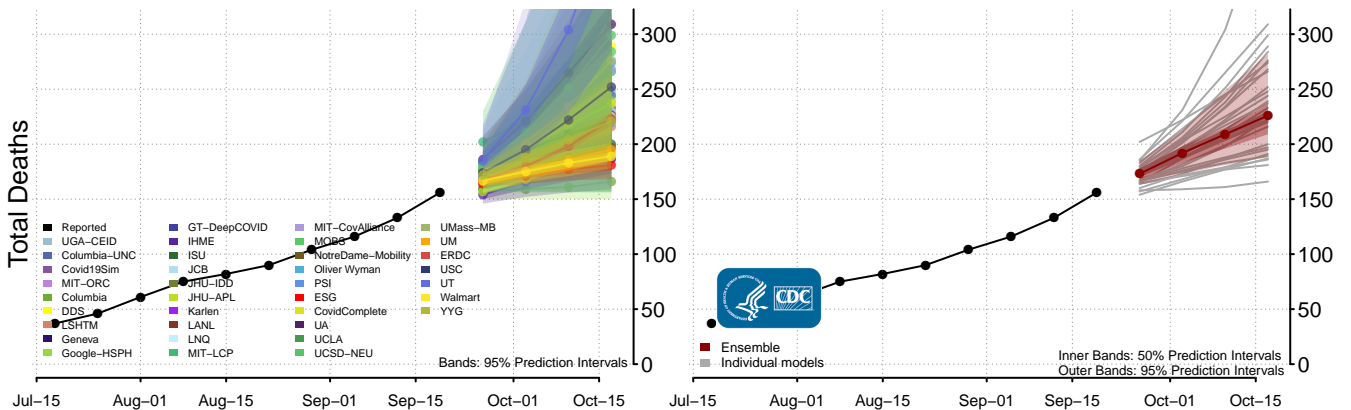
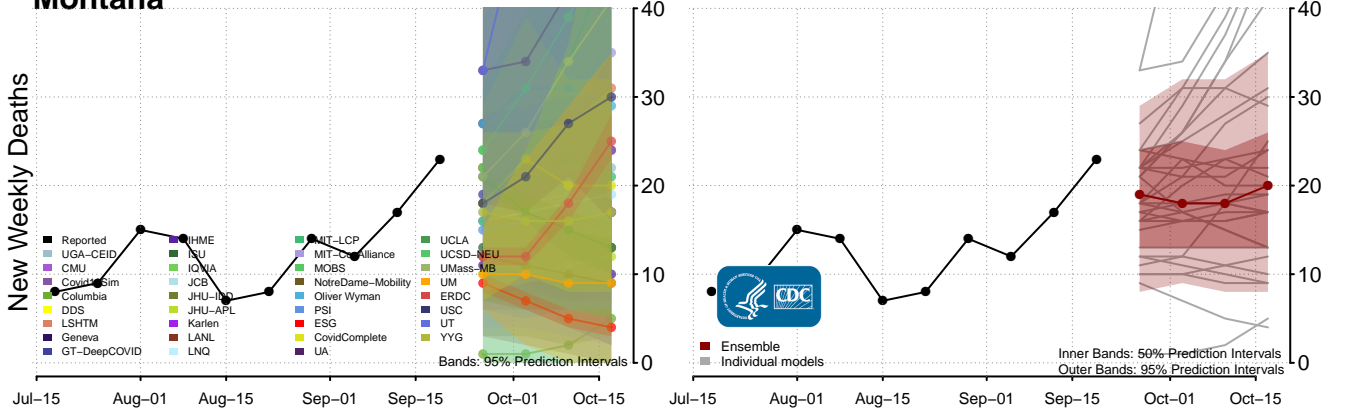


\*New weekly deaths may decrease in this location over the next four weeks. For these locations, the ensemble forecast indicates a probability of 0.75 or greater that fewer deaths will be reported in week four of the forecast than in the last reported week.

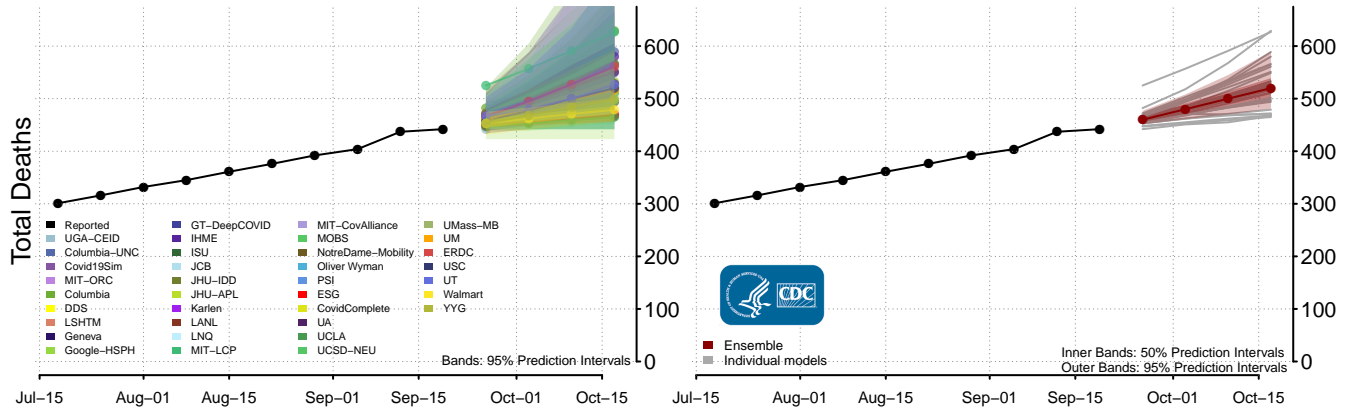
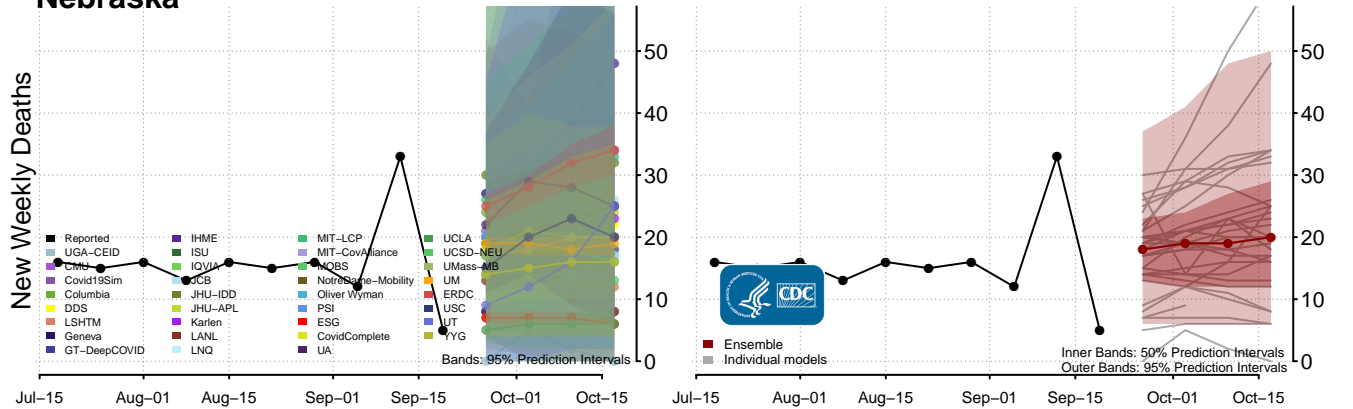
### Missouri



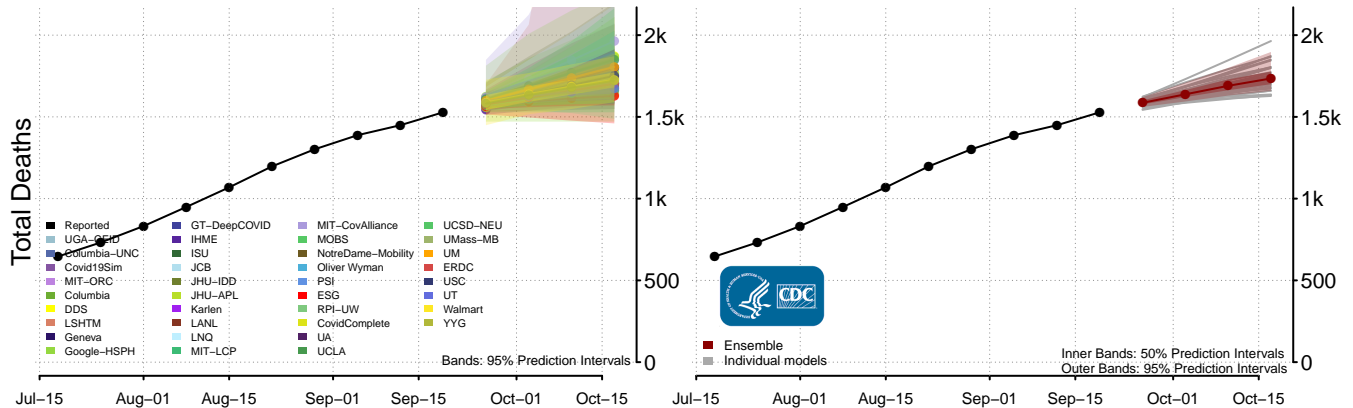
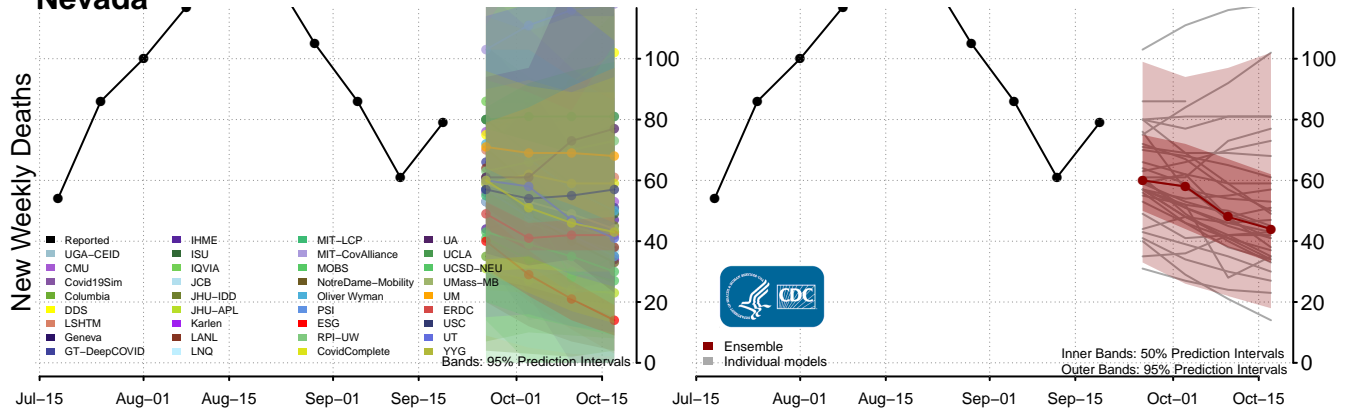
### Montana



# Nebraska

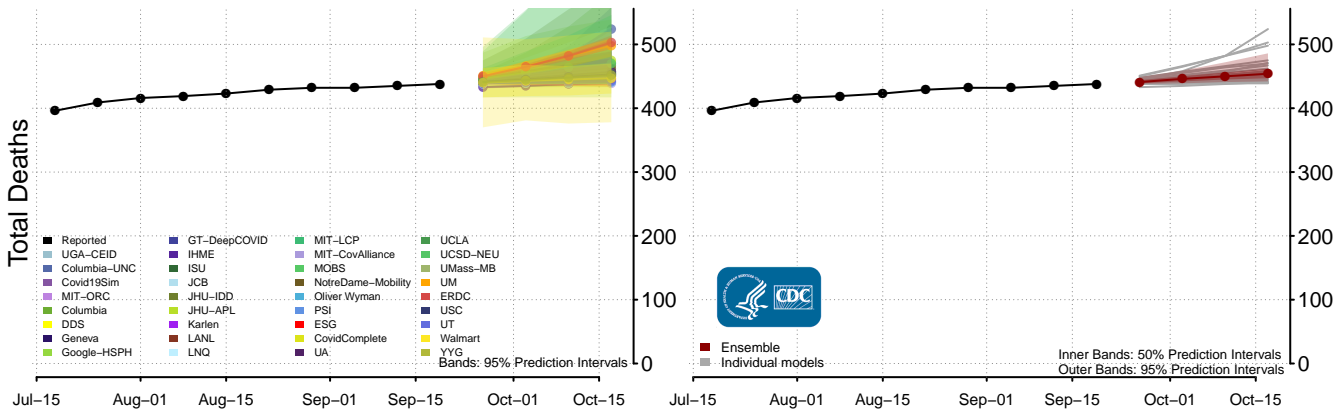
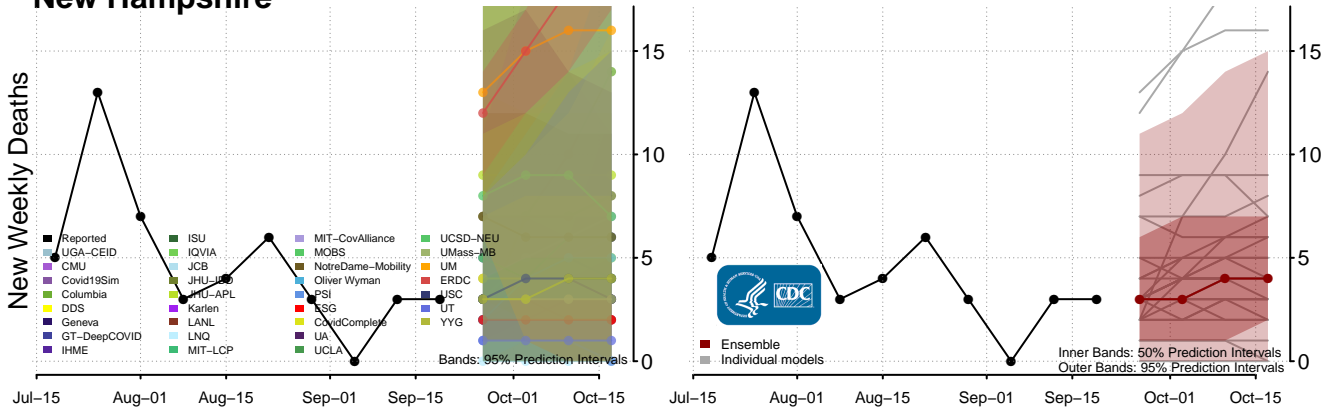


# Nevada

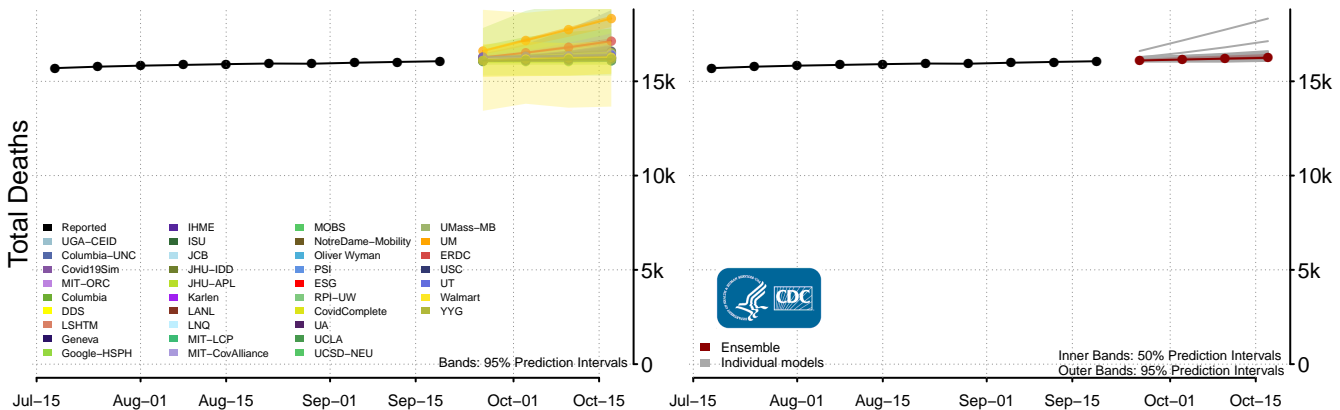
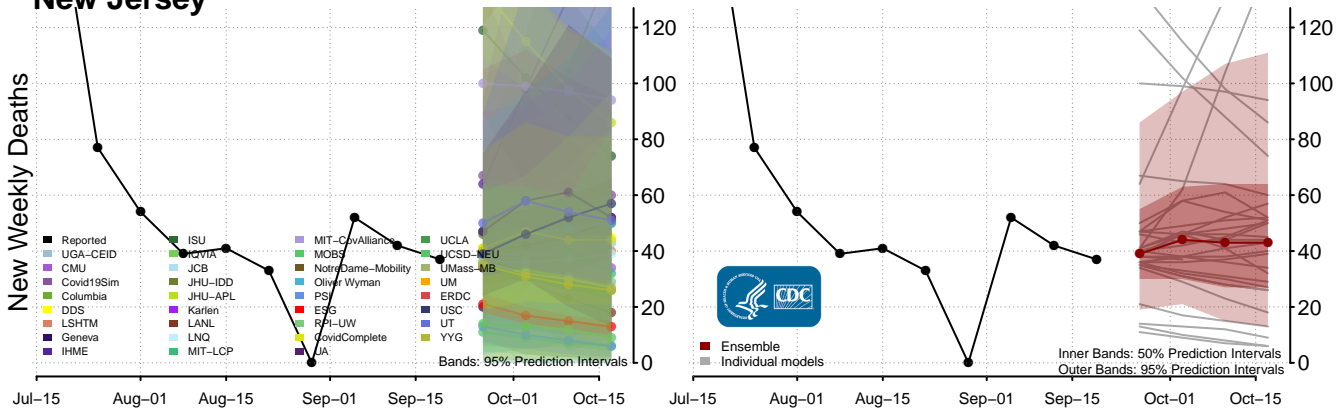




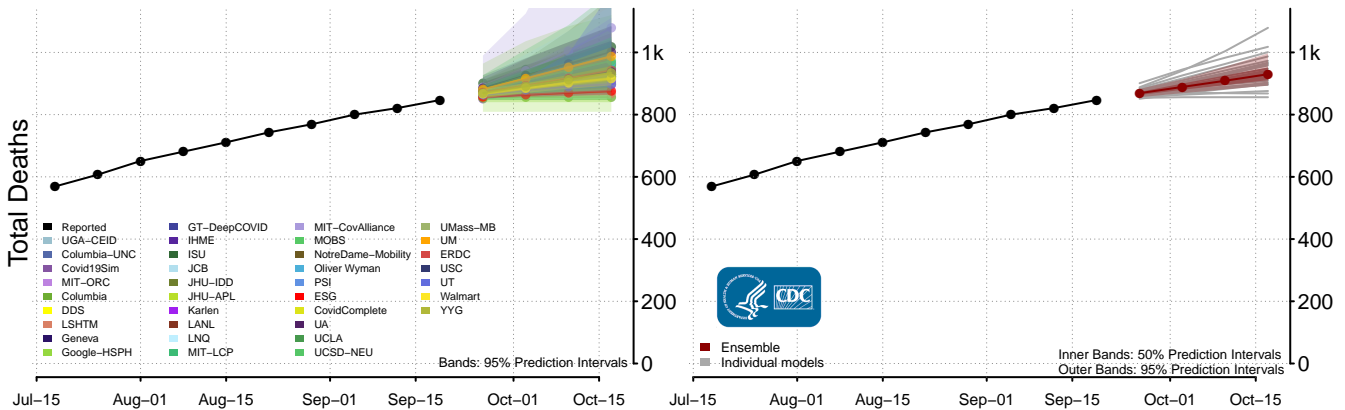
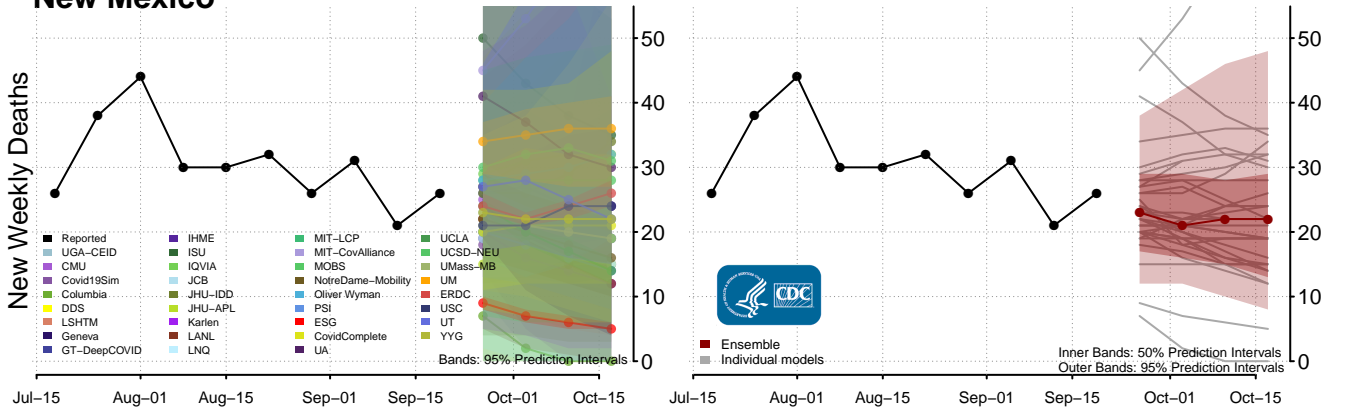
### New Hampshire



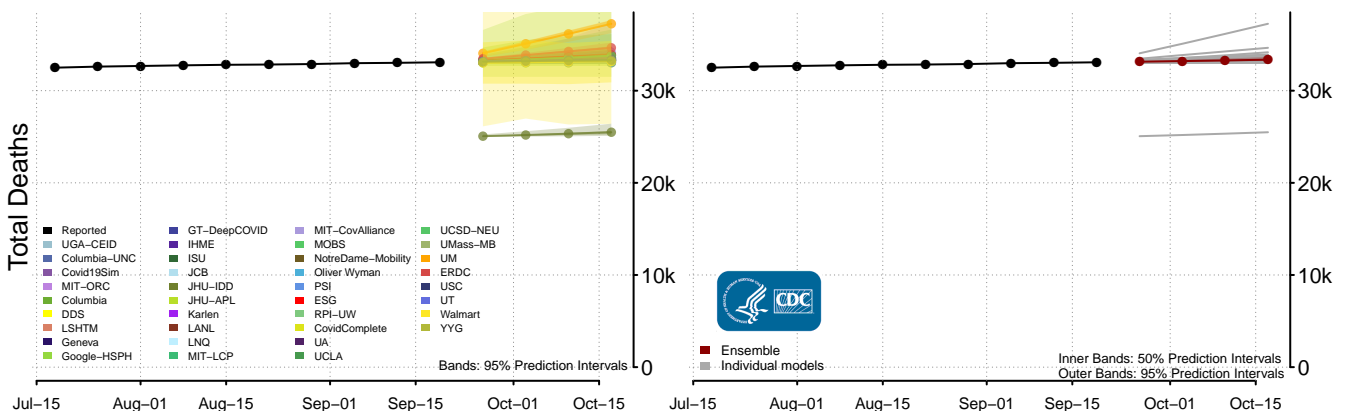
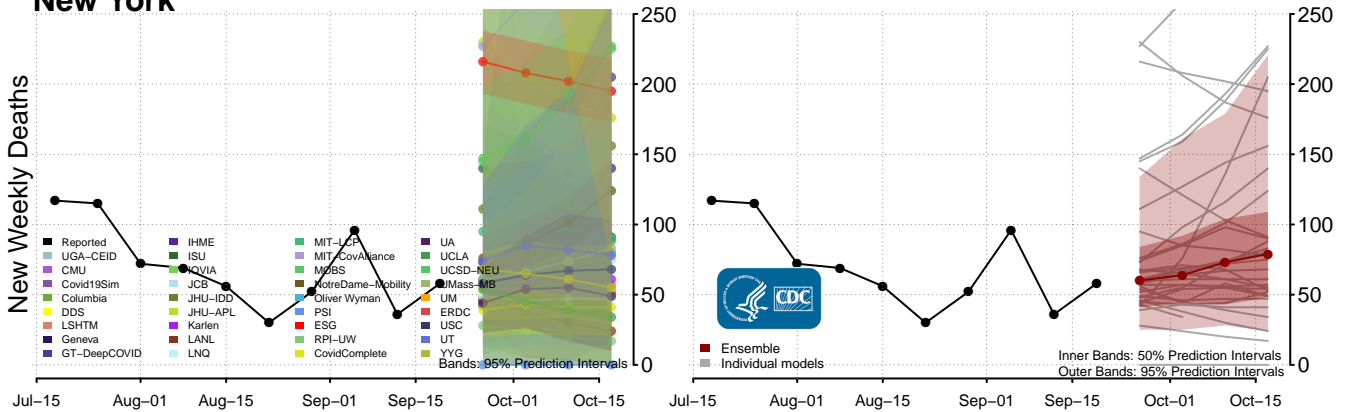
### New Jersey



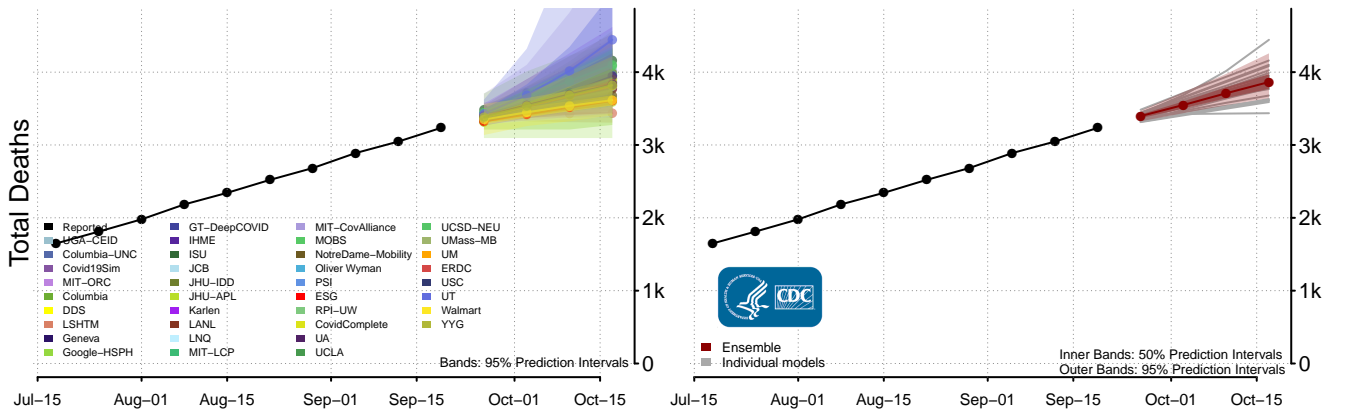
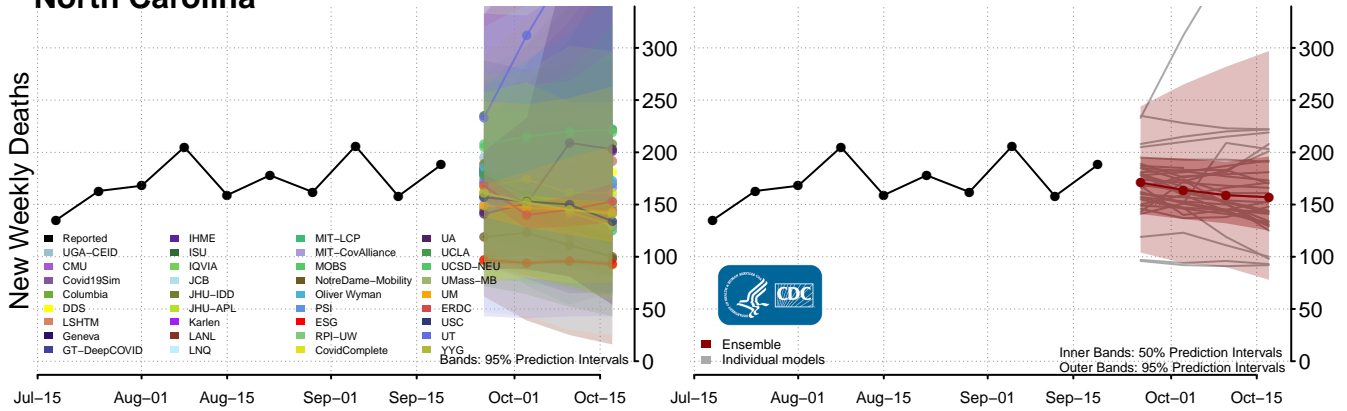
### New Mexico



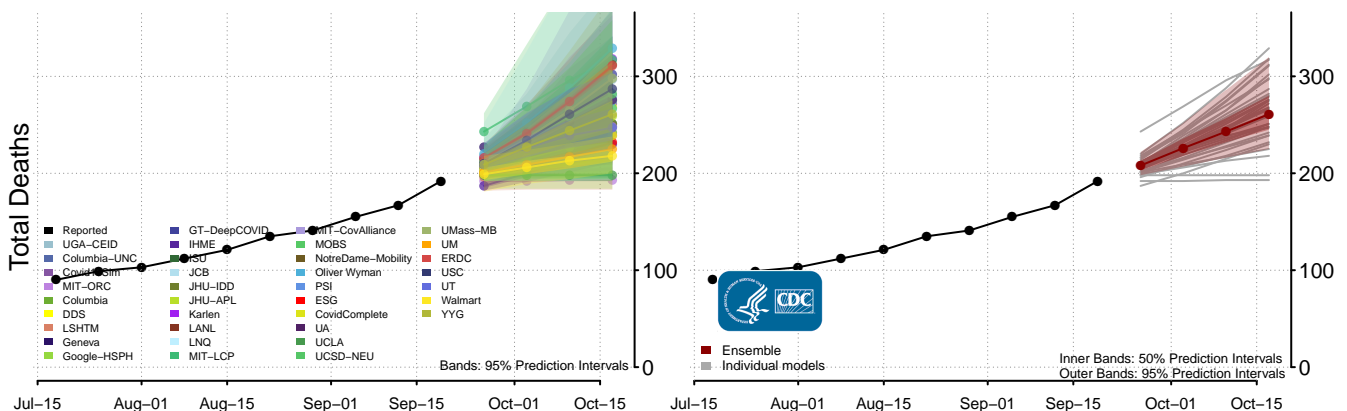
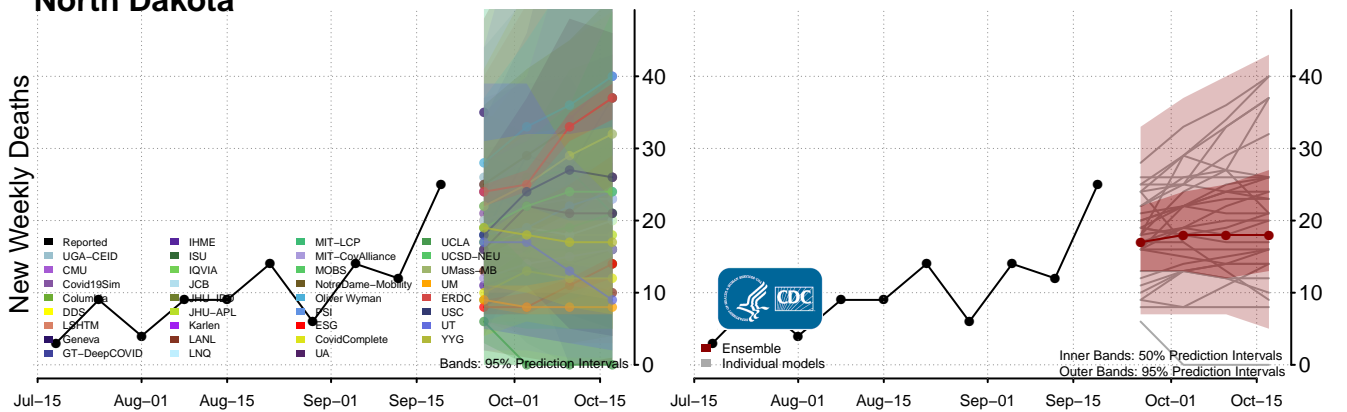
### New York



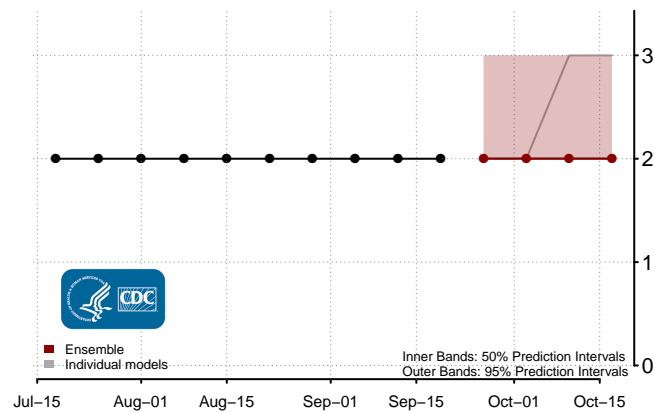
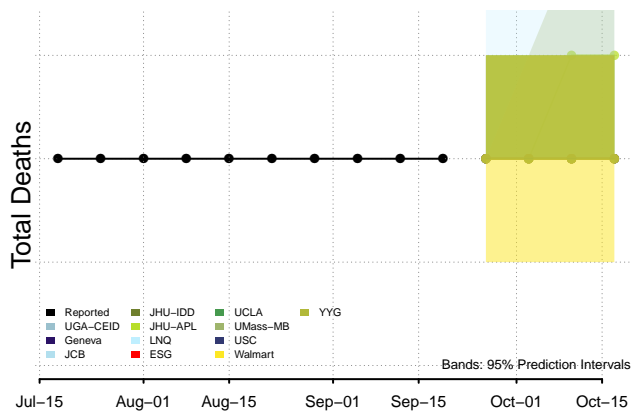
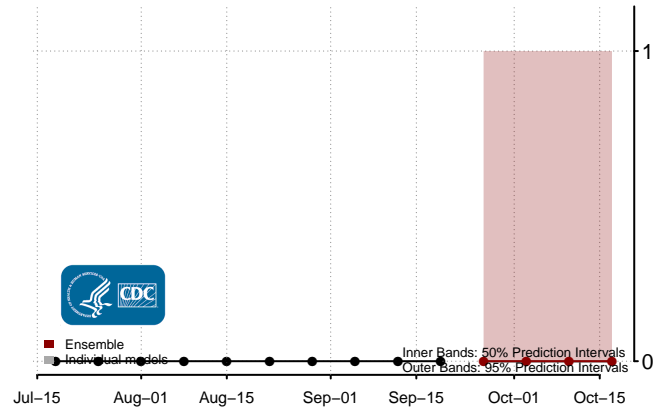
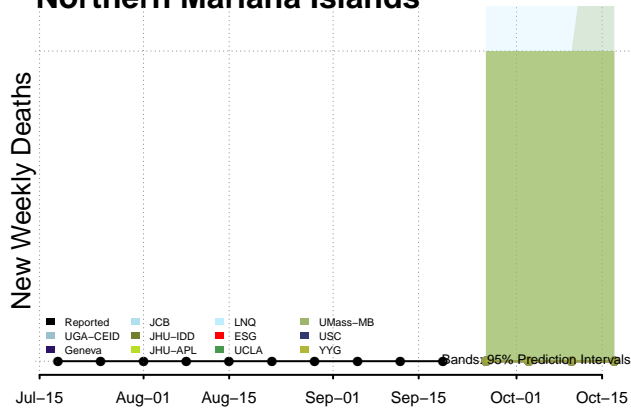
### North Carolina



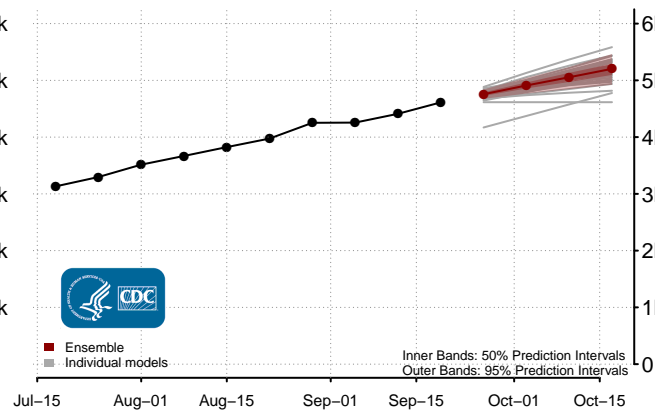
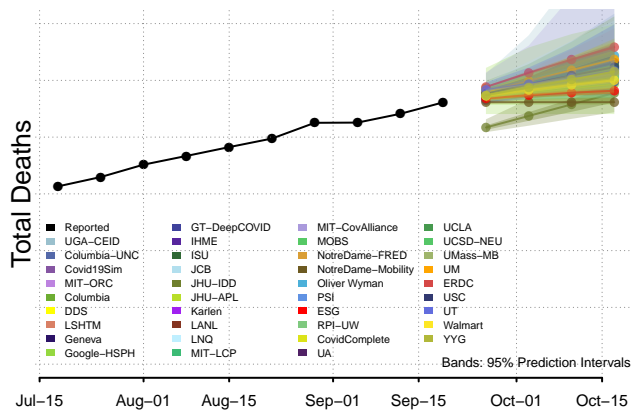
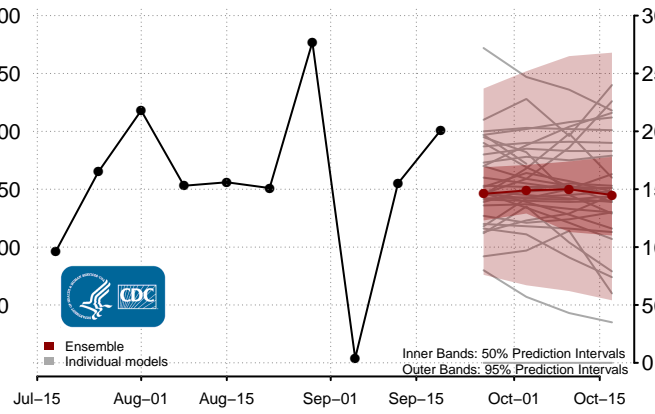
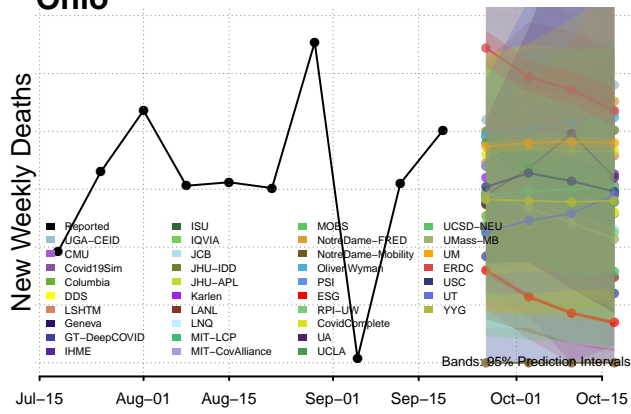
### North Dakota



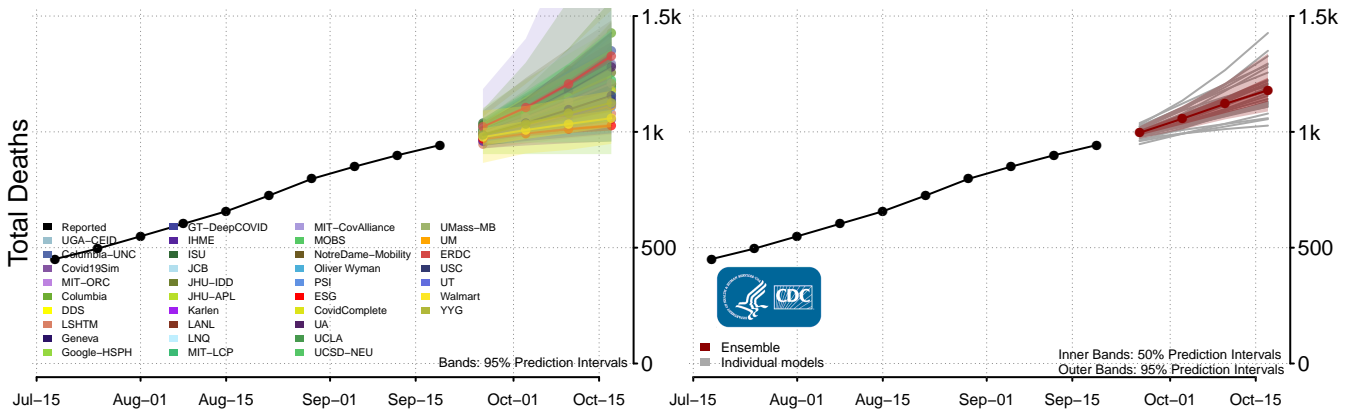
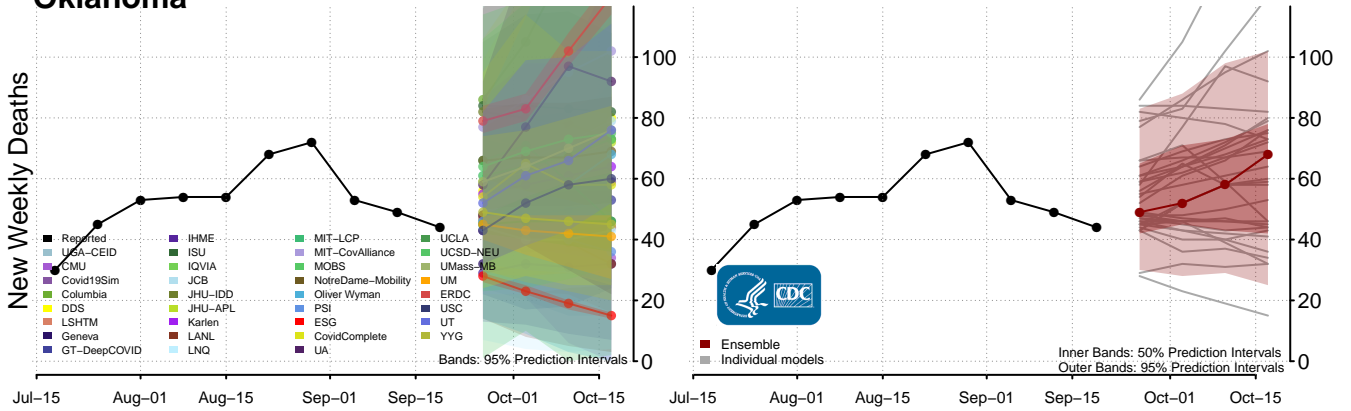
### Northern Mariana Islands



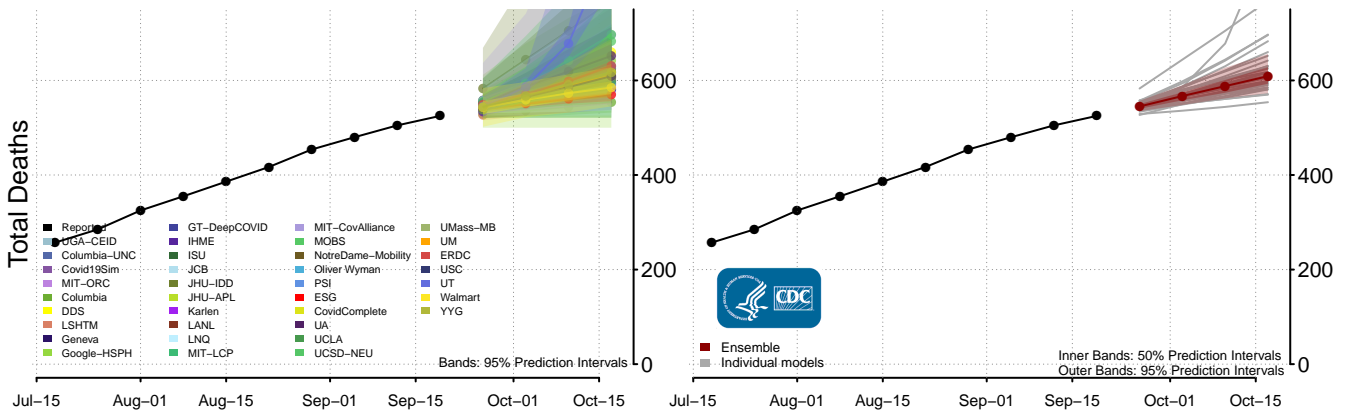
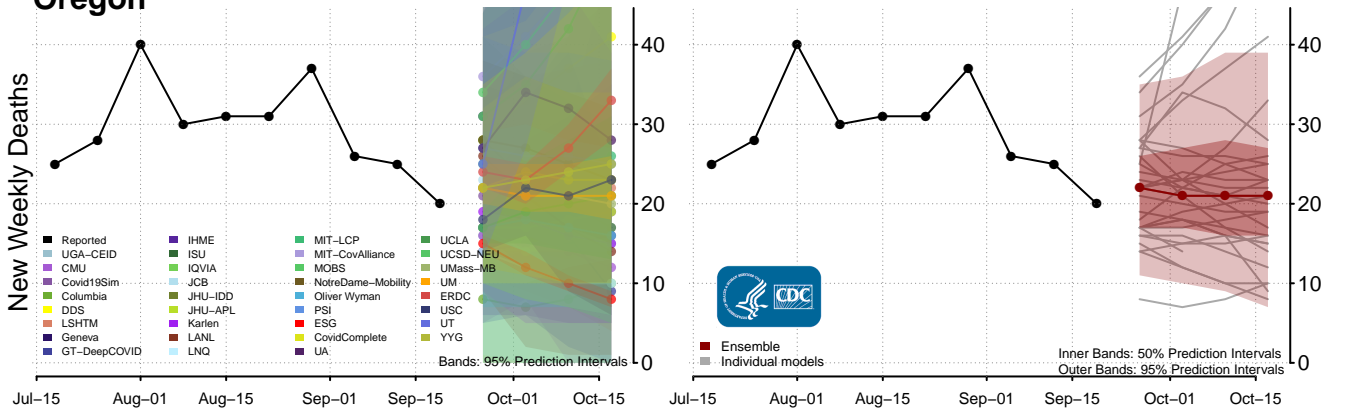
### Ohio



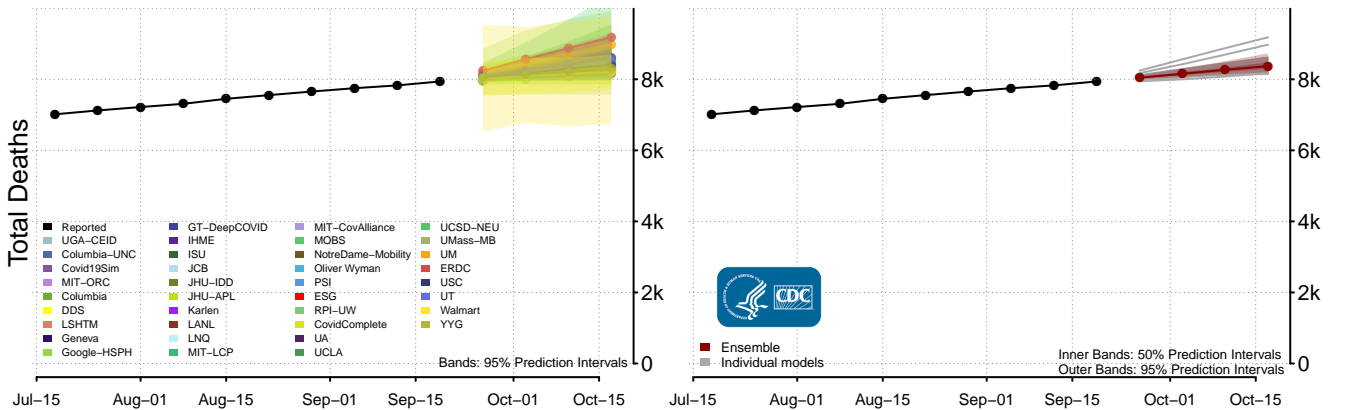
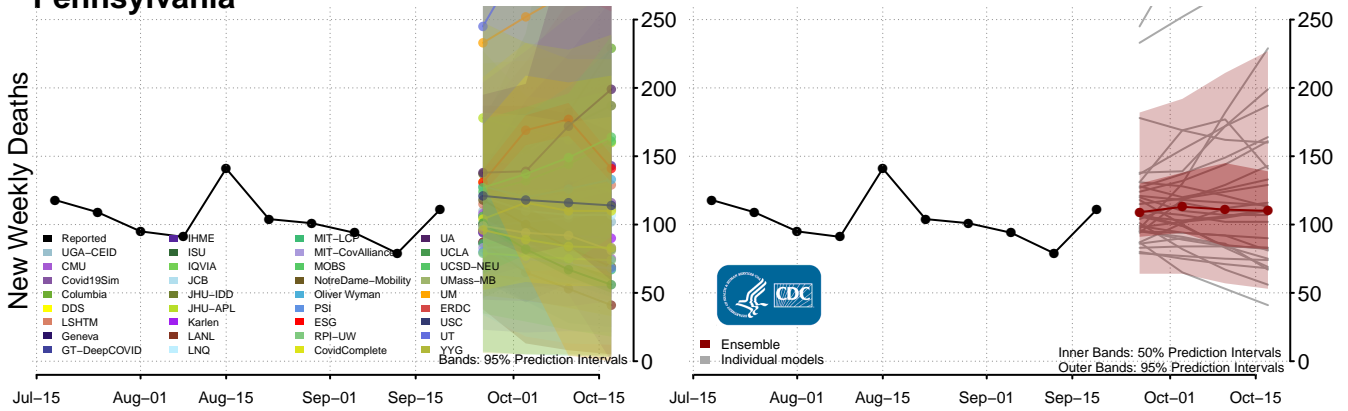
### Oklahoma



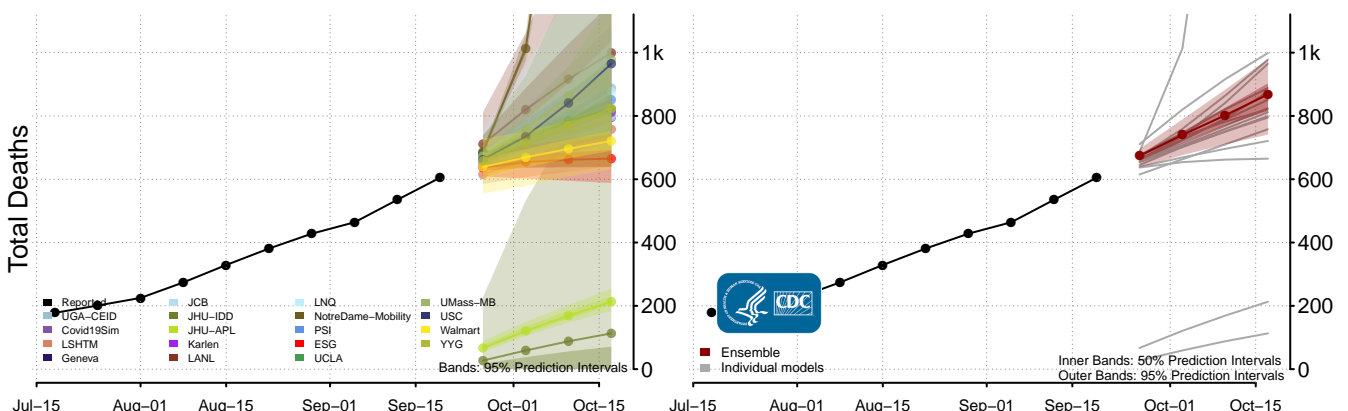
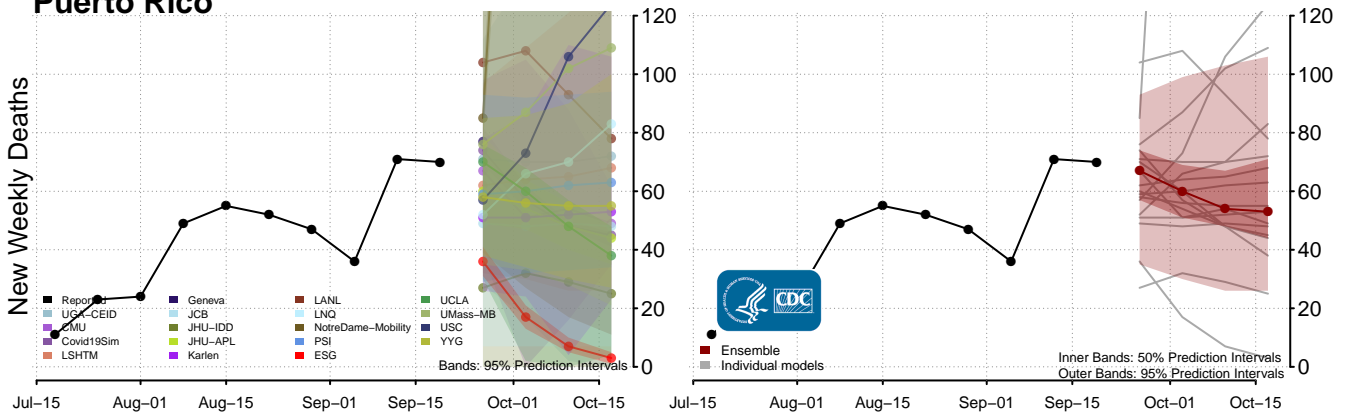
### Oregon



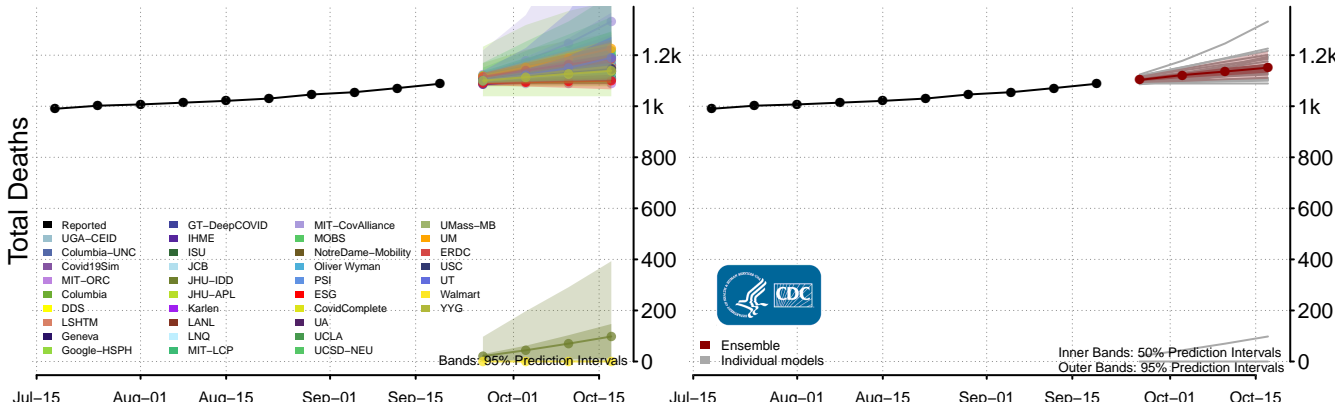
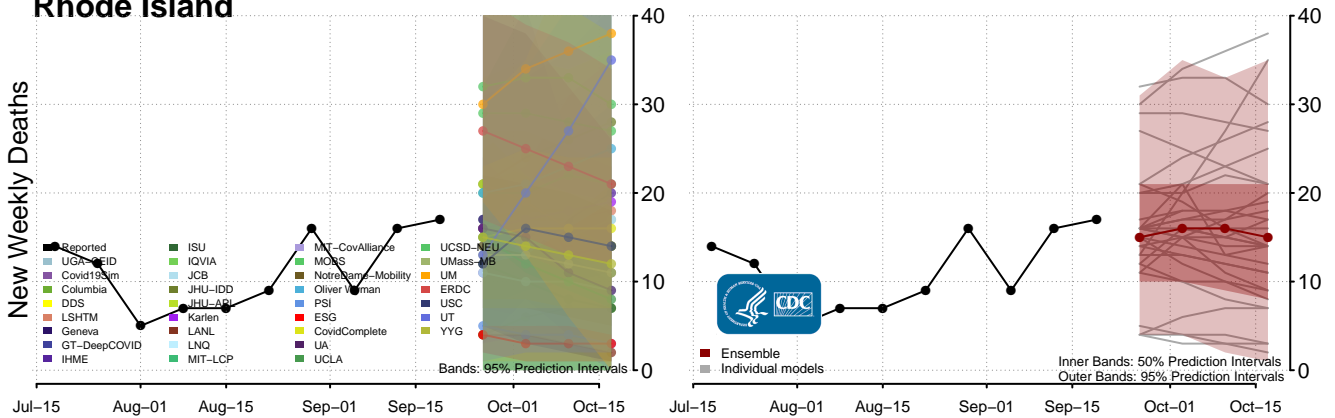
# Pennsylvania



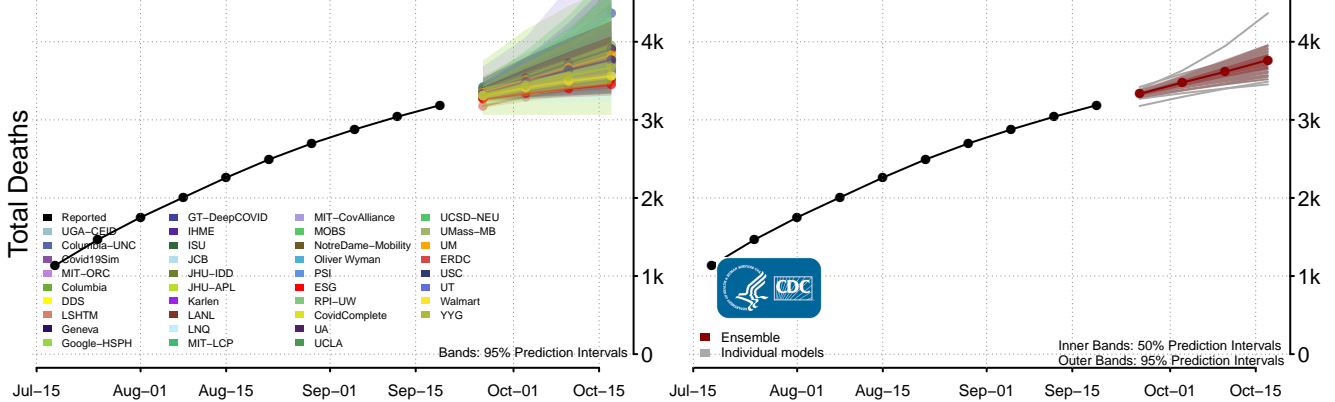
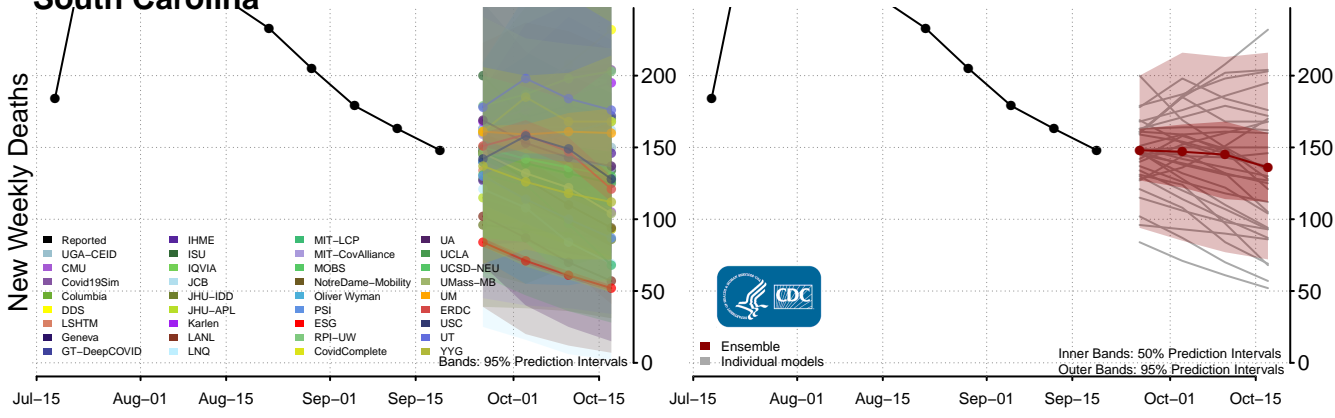
# Puerto Rico



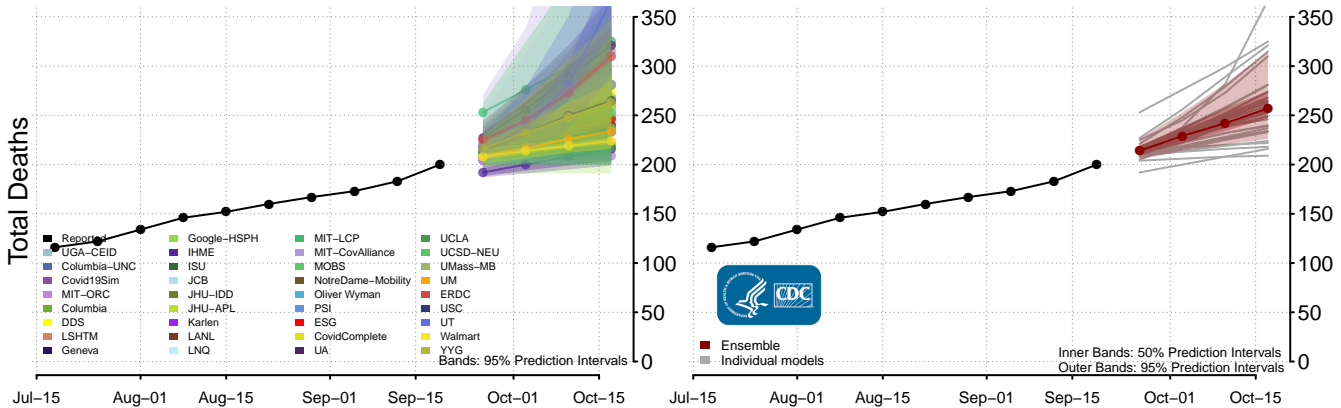
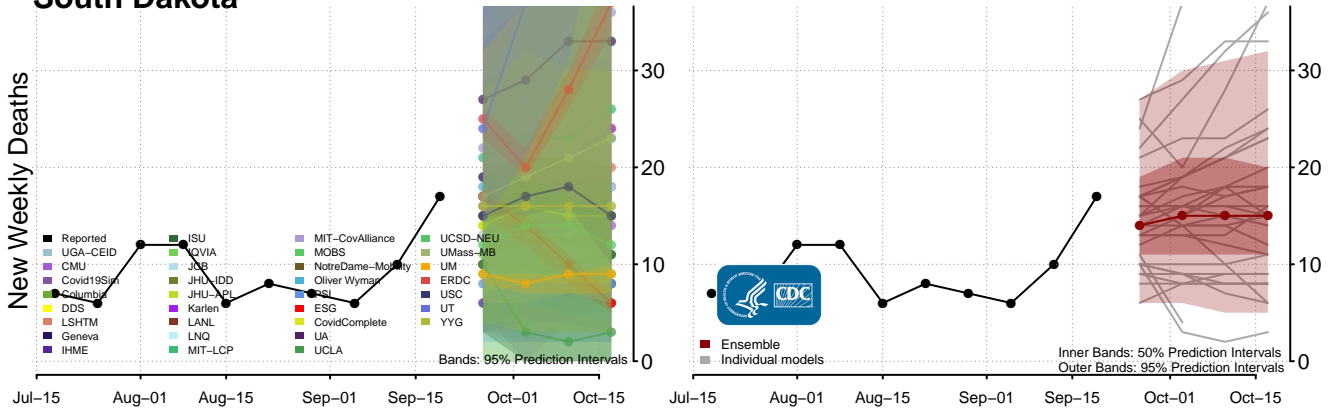
### Rhode Island



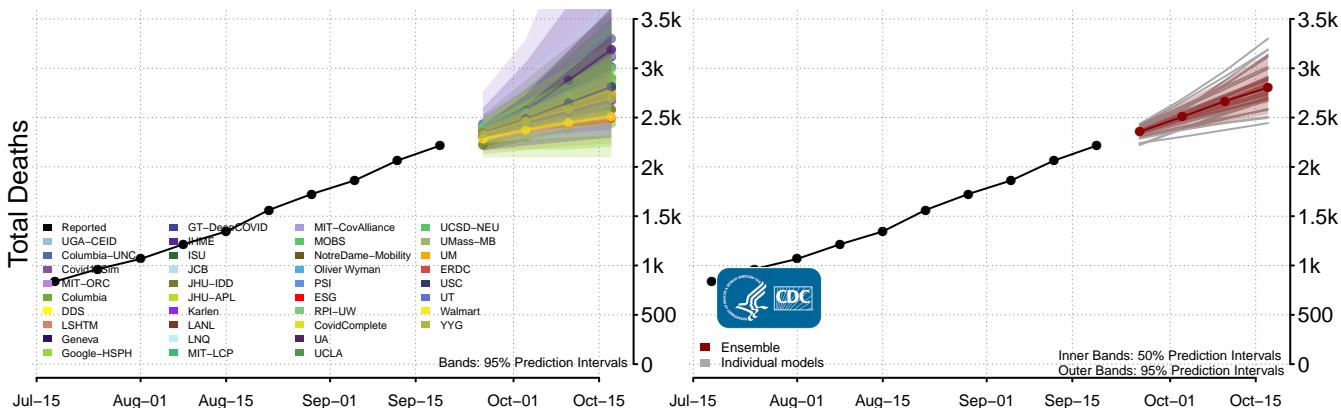
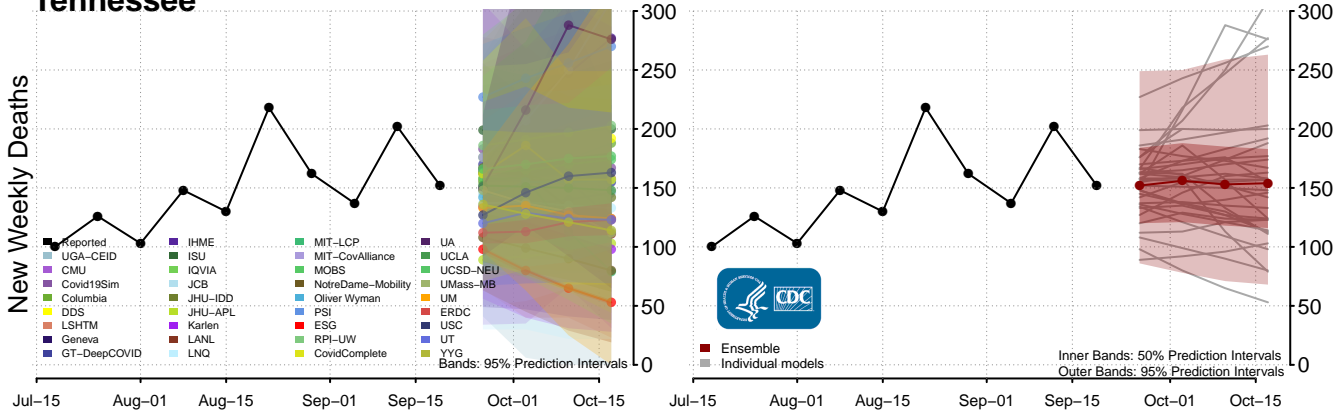
### South Carolina



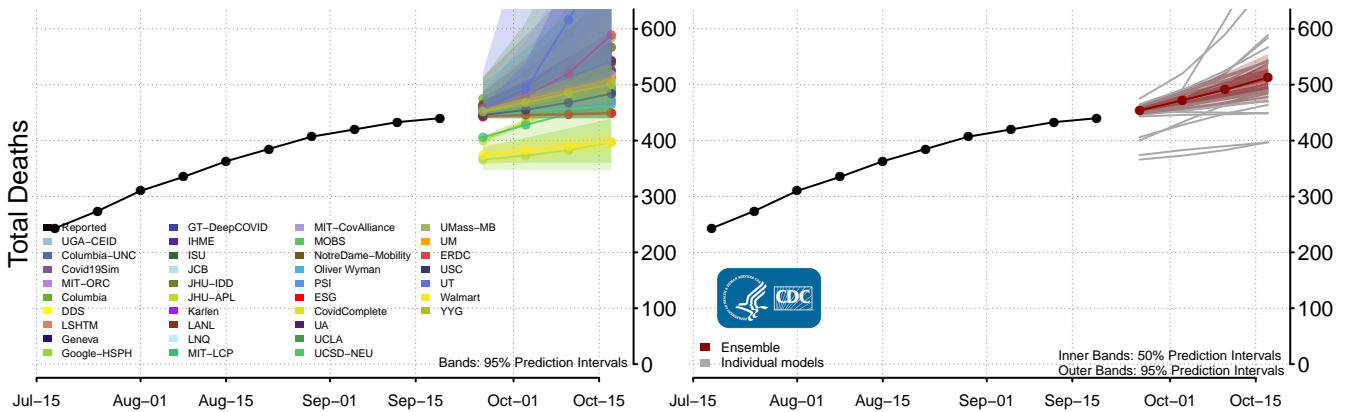
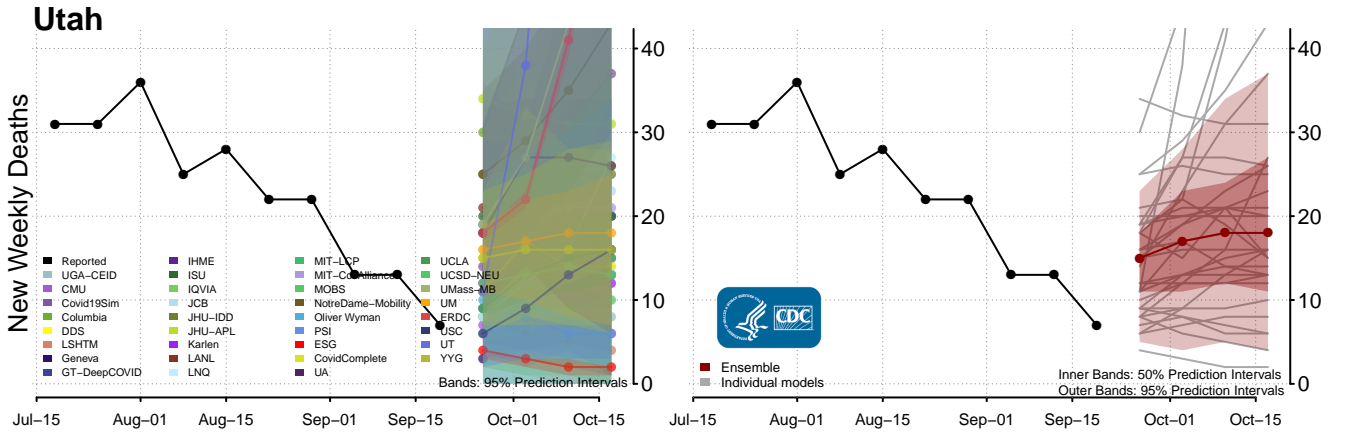
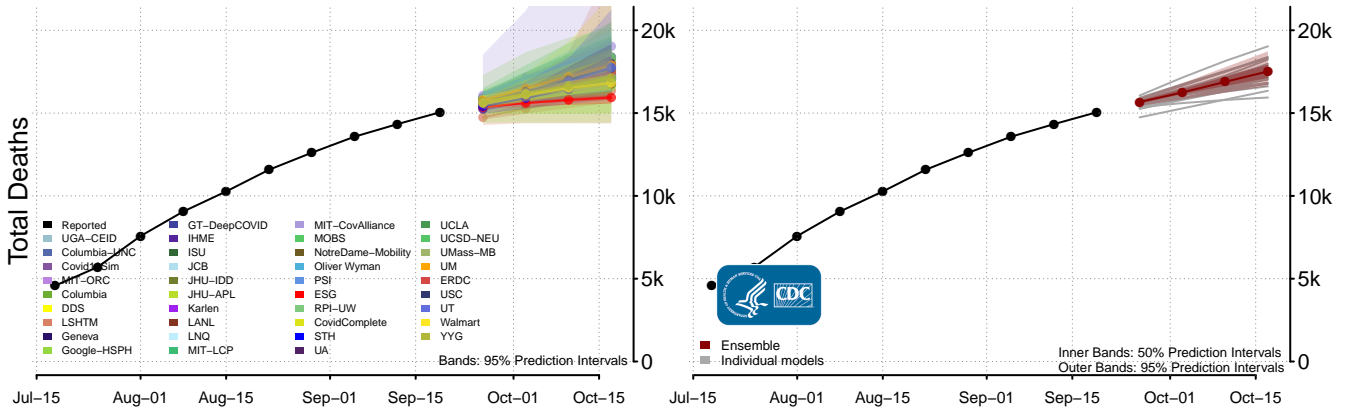
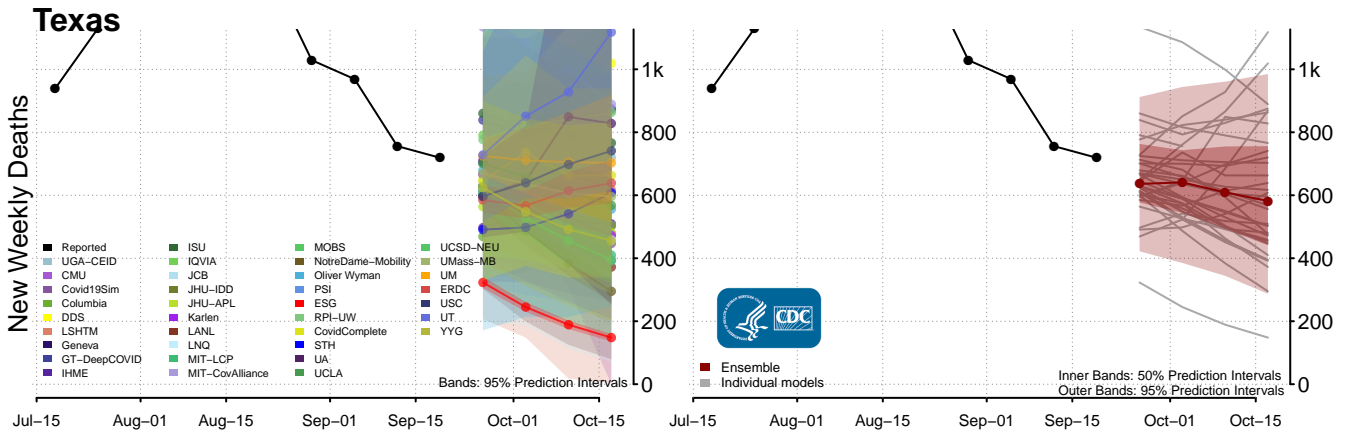
### South Dakota



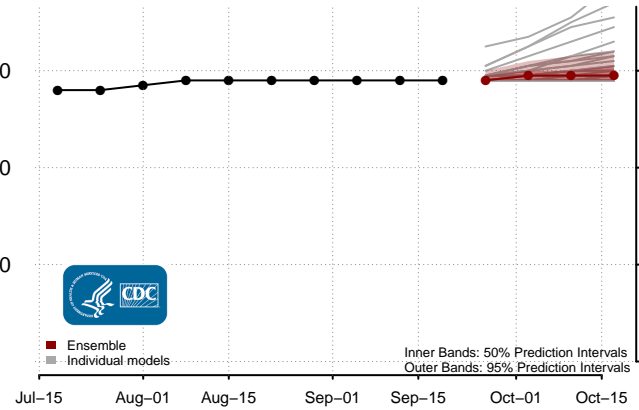
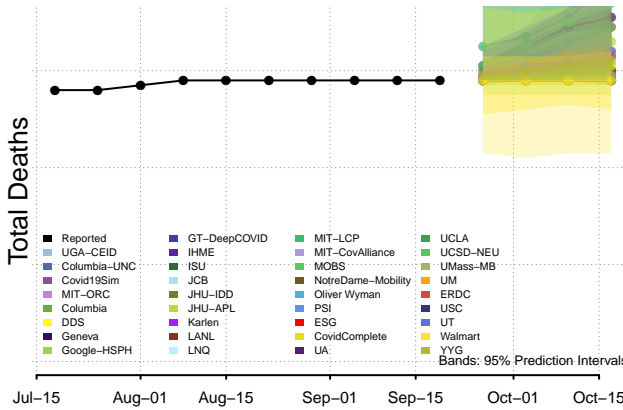
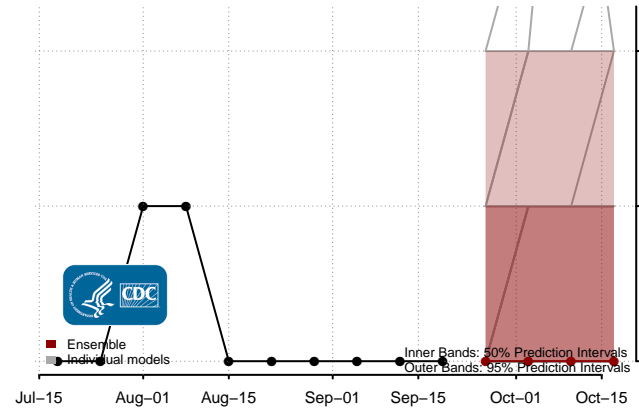
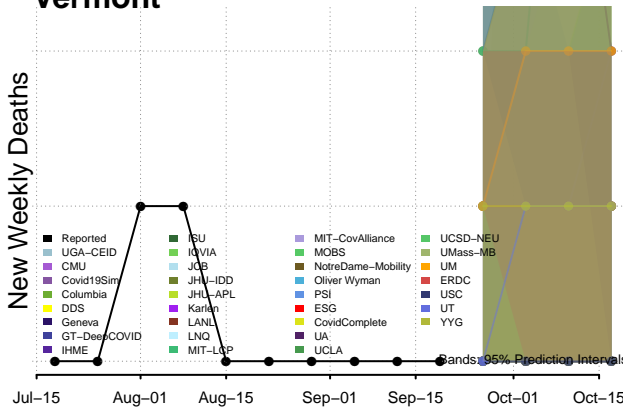
### Tennessee



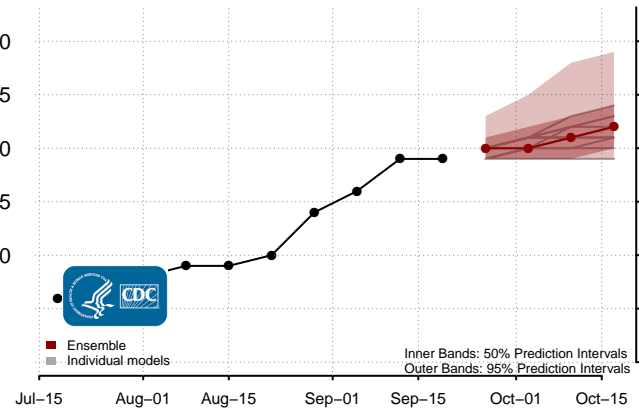
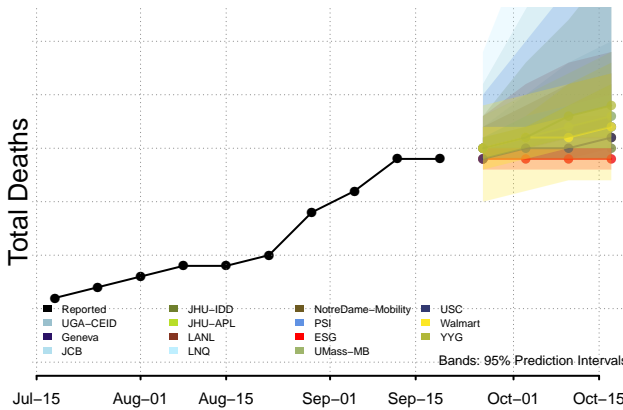
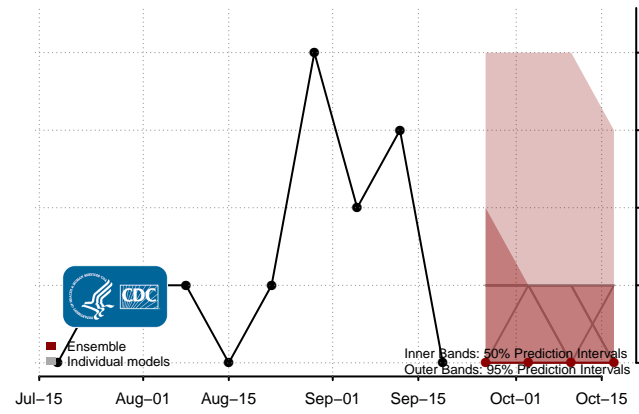
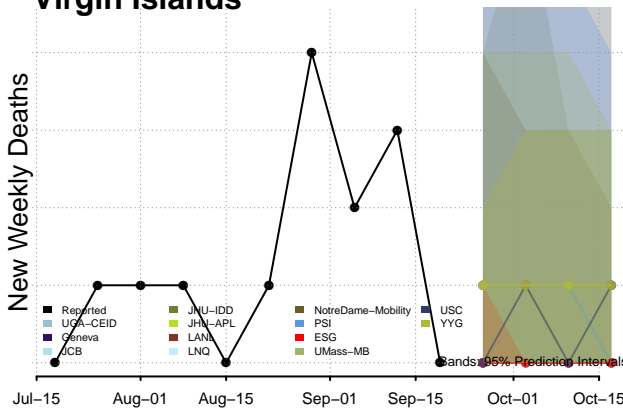




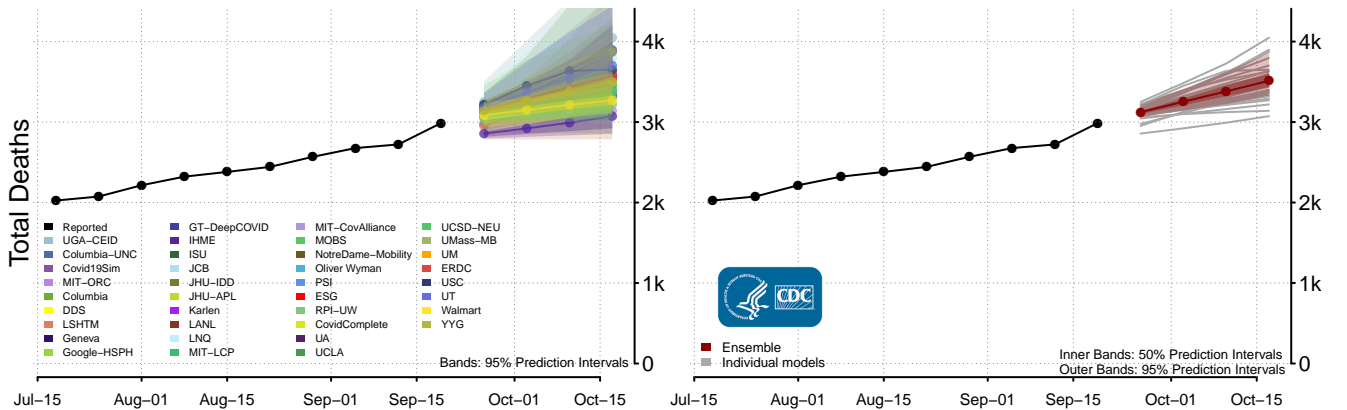
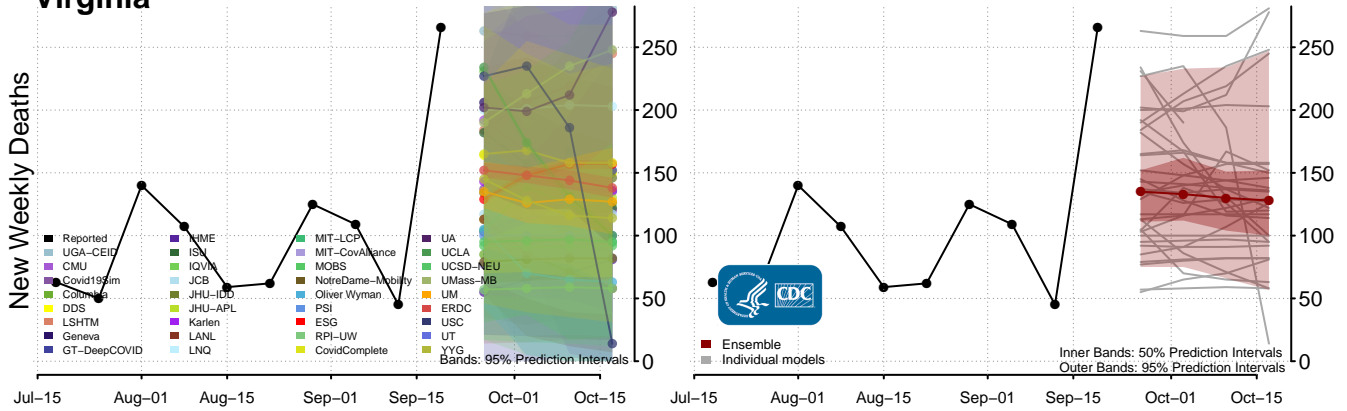
### Vermont



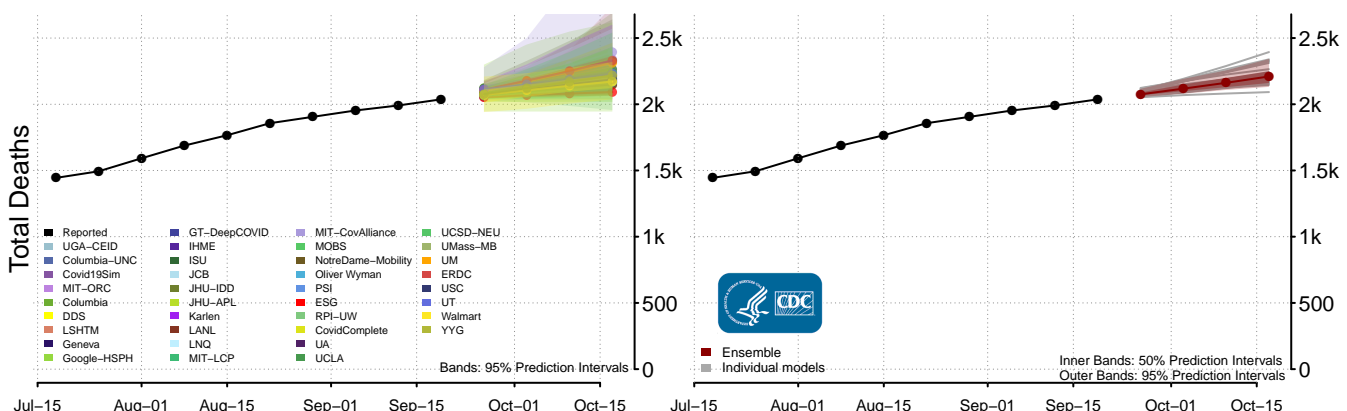
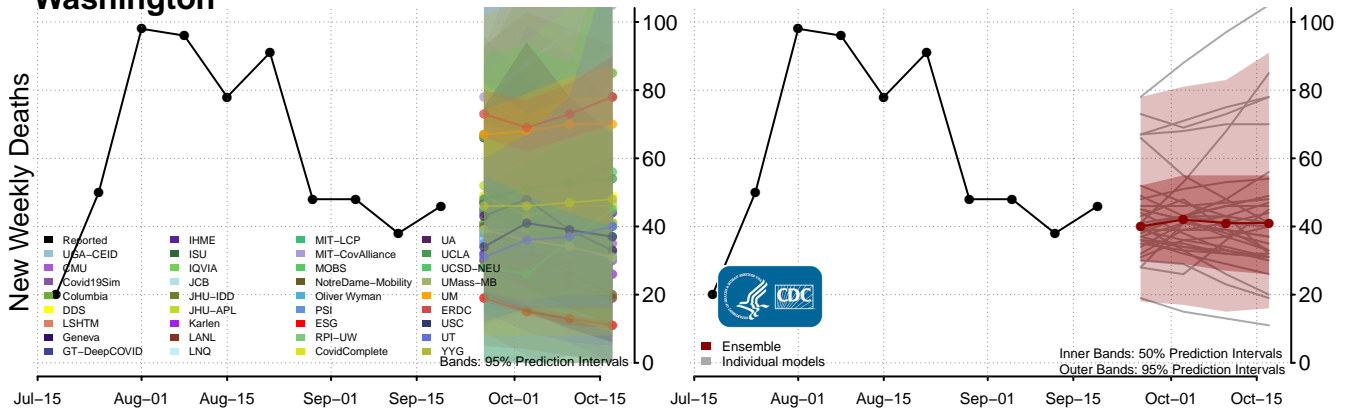
### Virgin Islands



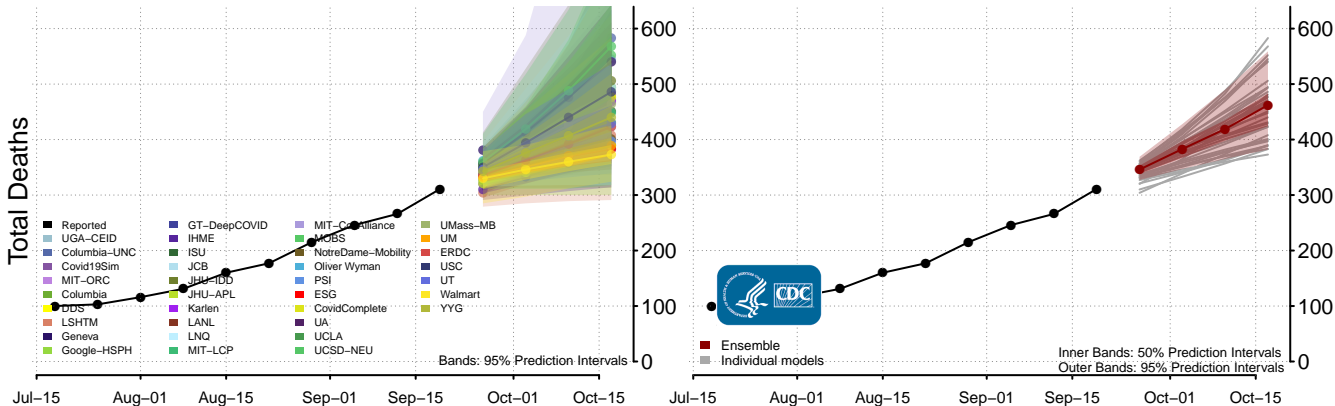
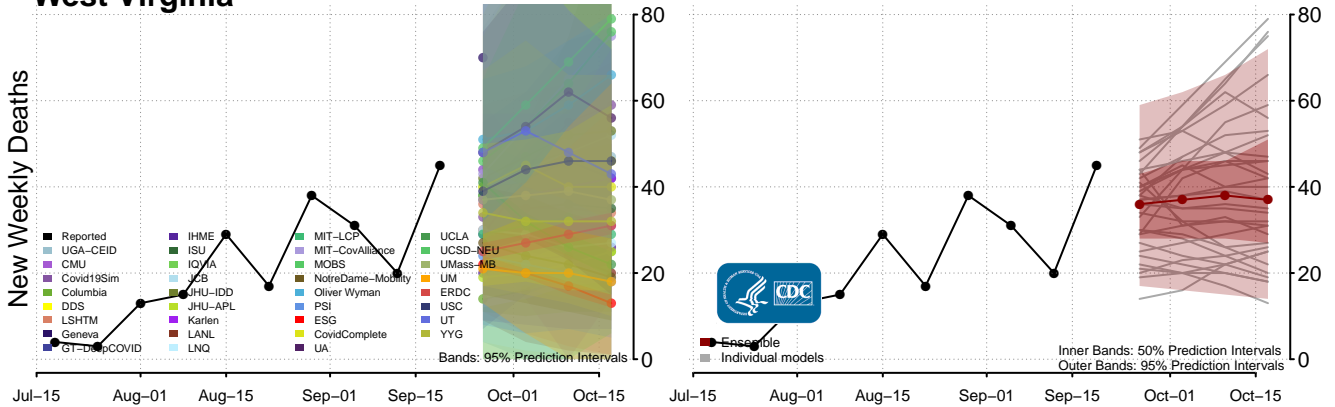
### Virginia



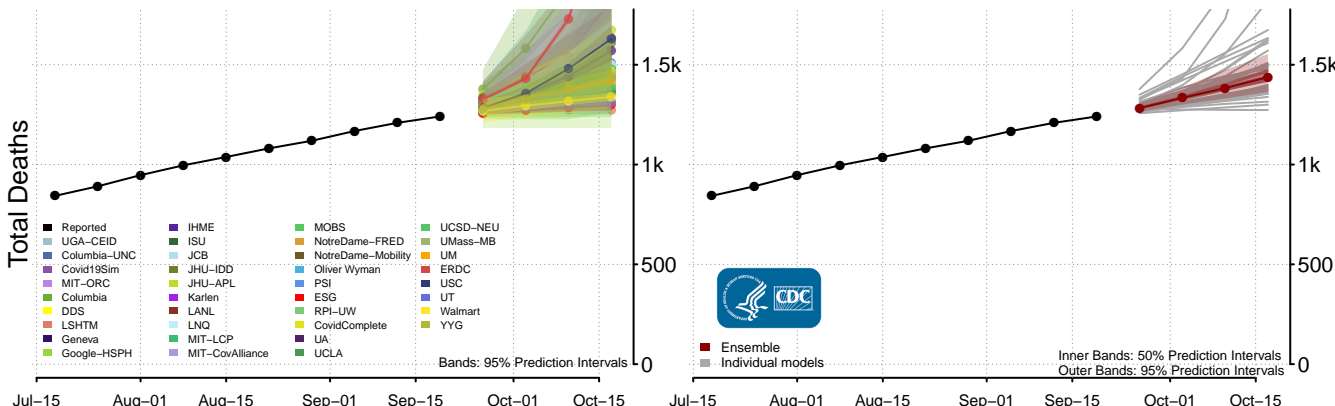
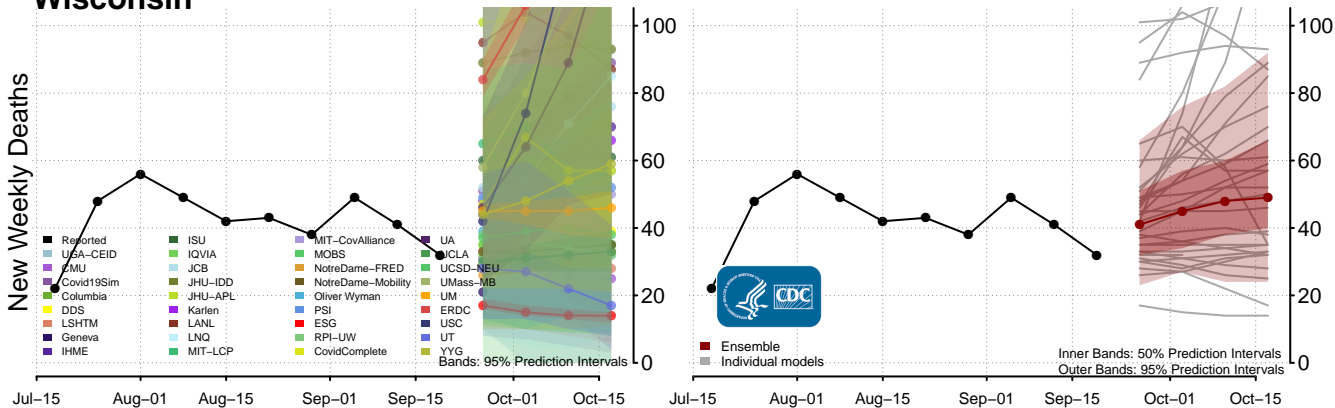
### Washington



### West Virginia



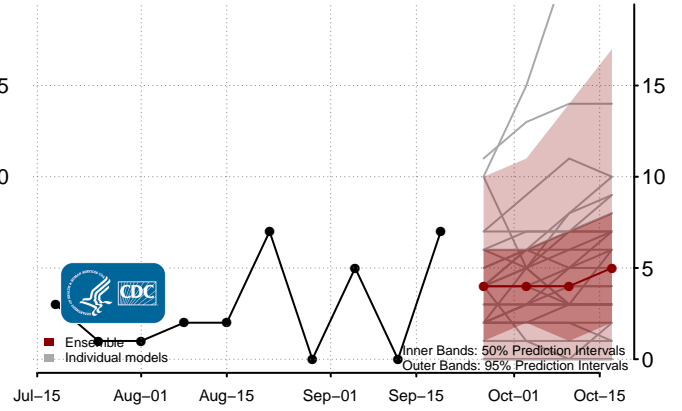
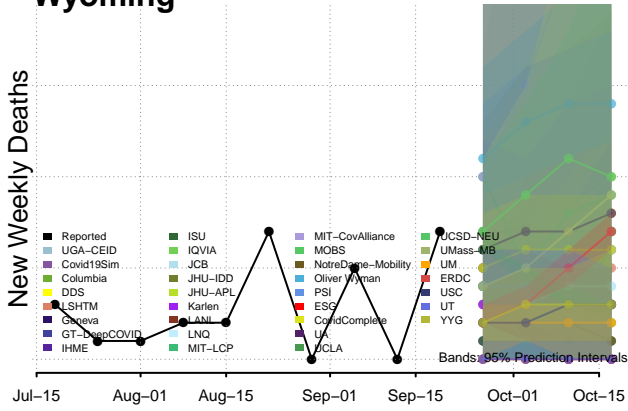
### Wisconsin\*\*



\*\*New weekly deaths may increase in this location over the next four weeks. For these locations, the ensemble forecast indicates a probability of 0.75 or greater that more deaths will be reported in week four of the forecast than in the last reported week.

# Wyoming

New Weekly Deaths



Total Deaths

