

U.S. Fish & Wildlife Service

2011 Annual Report

*Migratory Bird
Conservation Commission*



On the Cover: White-fronted Geese. *Painting by James Hautman for the 2011–2012 Federal Duck Stamp.*

Illustrations: Bob Hines

Table of Contents

The Service's Legacy of Conserving Migratory Waterfowl Habitat / 2

The Migratory Bird Conservation Commission / 3

The Migratory Bird Conservation Fund (MBCF) / 4

MBCF Approvals for Fiscal Year 2011 / 5

MBCF Land Acquisitions for Fiscal Year 2011 / 6

National Wildlife Refuge System: New Area and Boundary Approvals for Fiscal Year 2011 / 9

New Area Boundary Approvals and Maps / 10

Boundary Addition Approvals and Maps / 14

National Migratory Bird Refuge Areas and Waterfowl Production Areas / 16

Notes on Tables 1 and 2 / 16

National Migratory Bird Refuge Areas Map / 17

Table 1. National Migratory Bird Refuges / 18

Wetland Management Districts Map / 27

Table 2. Waterfowl Production Areas by State / 28

North American Wetlands Conservation Fund: MBCC Approvals for Fiscal Year 2011 / 34

Table 3. U.S. Wetlands Conservation Standard Grants Proposals / 35

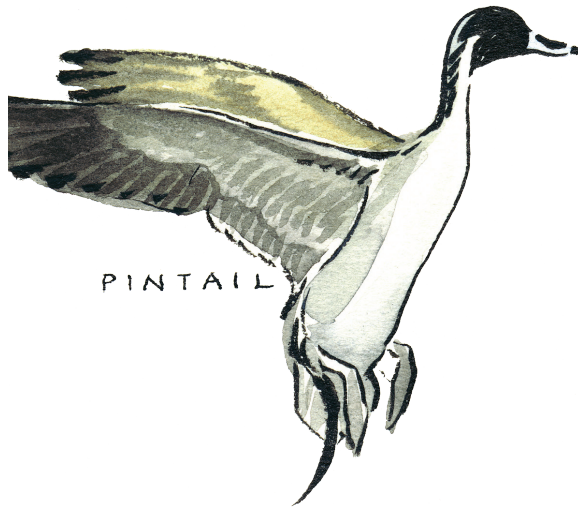
Table 4. U.S. Wetlands Conservation Small Grant Proposals / 36

Table 5. Canadian Wetlands Conservation Proposals / 37

Table 6.. Mexican Wetlands Conservation Proposals / 38

MBCC Membership Chart / 39

The Service's Legacy of Conserving Migratory Waterfowl Habitat



For more than 80 years, the Federal Duck Stamp Program and Migratory Bird Conservation Program have helped secure key habitats to sustain migratory bird populations. They protect wetlands, help dissipate storm runoff, purify water supplies, and store flood water. As we look forward to the future conservation of these critical resources, we can find inspiration in these programs' extraordinary history of success.

At the turn of the 20th century, overzealous hunters and the commercial demand for meat and feathers had decimated waterfowl populations. At the same time, periodic droughts caused wetlands and other valuable waterfowl habitat to disappear. In the late 1920s, conservationists, hunters, and government officials worked together to create the Migratory Bird Conservation Act, which Congress passed in 1929. This landmark legislation authorized the Federal government to acquire and permanently protect wetlands for waterfowl. It also created the Migratory Bird Conservation Commission—composed of Federal and State officials—to consider and approve proposals for land acquisition.

Although the Act gave the government authority to create migratory bird refuges, it did not provide a permanent source of acquisition funding. This problem was addressed in the 1930s when President Franklin D. Roosevelt appointed Jay N. "Ding" Darling, a nationally known wildlife conservationist and political cartoonist, to serve as the Chief of the Bureau of Biological Survey. Darling was instrumental in the creation of a stamp, to be purchased by all waterfowl hunters, that would generate funds to pay for the acquisition of waterfowl habitat. In 1934, Congress passed the Migratory Bird Hunting and Conservation Stamp Act, which required all hunters older than 16 to purchase and possess a Federal Duck Stamp while hunting waterfowl. Revenues from Duck Stamp sales are

now deposited in the Migratory Bird Conservation Fund. The fund also includes import duties collected on arms and ammunition, receipts from permits for rights-of-way across refuge lands, and any appropriations from the Wetlands Loan Act, which Congress authorized in 1961 as an advance of funds against future revenues from sale of Duck Stamps.

Since 1934, the Service has spent more than \$1 billion Migratory Bird Conservation Fund dollars to permanently protect more than five million acres of important waterfowl habitat—including nearly three million acres of waterfowl production areas in the U.S. Prairie Pothole Region. In 2011 alone, the Service used almost \$34 million in funds from the Migratory Bird Conservation Fund to purchase, lease, or protect via easement nearly 30,000 acres of waterfowl habitat at migratory bird refuges and almost 22,000 acres in the Prairie Pothole Region.

Today as in the past, the Federal Duck Stamp Program and Migratory Bird Conservation Program depend on the support of people who understand and connect with our natural world—people who understand the importance of our wildlife resources and take action. What can you do? Buy a Federal Duck Stamp. Tell people how important Federal Duck Stamps are to ensuring healthy populations of all migratory birds and other wildlife. For more information, visit our Federal Duck Stamp Web site <www.fws.gov/duckstamps> or our Division of Realty Web site <www.fws.gov/refuges/realty>.

The Migratory Bird Conservation Commission

Section 2 of the Migratory Bird Conservation Act of 1929 established the Migratory Bird Conservation Commission. It reads as follows:

Section 2, as amended. A Commission to be known as the Migratory Bird Conservation Commission, consisting of the Secretary of the Interior, as Chairman; the Administrator of the Environmental Protection Agency; the Secretary of Agriculture; two Members of the Senate, to be selected by the President of the Senate; and two Members of the House of Representatives, to be selected by the Speaker, is created and authorized to consider and pass upon any area of land, water, or land and water that may be recommended by the Secretary of the Interior for purchase or rental under this Act, and to fix the price or prices at which such area may be purchased or rented; and no purchase or rental shall be made of any such area until it has been duly approved for purchase or rental by said Commission.

Any Member of the House of Representatives, who is a member of Congress, if reelected to the succeeding Congress, may serve on the Commission notwithstanding the expiration of a Congress. Any vacancy on the Commission shall be filled in the same manner as the original appointment. The ranking officer of the branch or department of a State to which is committed the administration of its game laws, or his authorized representative, shall be a member ex officio of said Commission for the purpose of considering and voting on all questions relating to the acquisition, under said sections, of areas in his State. For purposes of said sections, the purchase or rental of any area of land, water, or land and water includes the purchase or rental of any interest in any such area of land, water, or land and water.

Additional Act

In 1989, the Commission acquired the additional responsibility of approving project funding under the North American Wetlands Conservation Act. This Act provides Federal funding to encourage partnerships to protect, enhance, restore, and manage wetlands and other habitats for migratory birds and other fish and wildlife. The North American Wetlands Conservation Council, which was created by the legislation, submits project recommendations to the Commission for funding approval.

2011 Membership

Hon. Kenneth L. Salazar
Secretary of Interior, Chairman

Hon. Tom Vilsack
Secretary of Agriculture

Hon. Lisa P. Jackson
Administrator, Environmental Protection Agency

Hon. Thad Cochran
Senator from Mississippi

Hon. Mark Pryor
Senator from Arkansas

Hon. John D. Dingell
Representative from Michigan

Hon. Robert J. Wittman
Representative from Virginia

A Eric Alvarez
Secretary to the Commission
Telephone: 703/358 1716

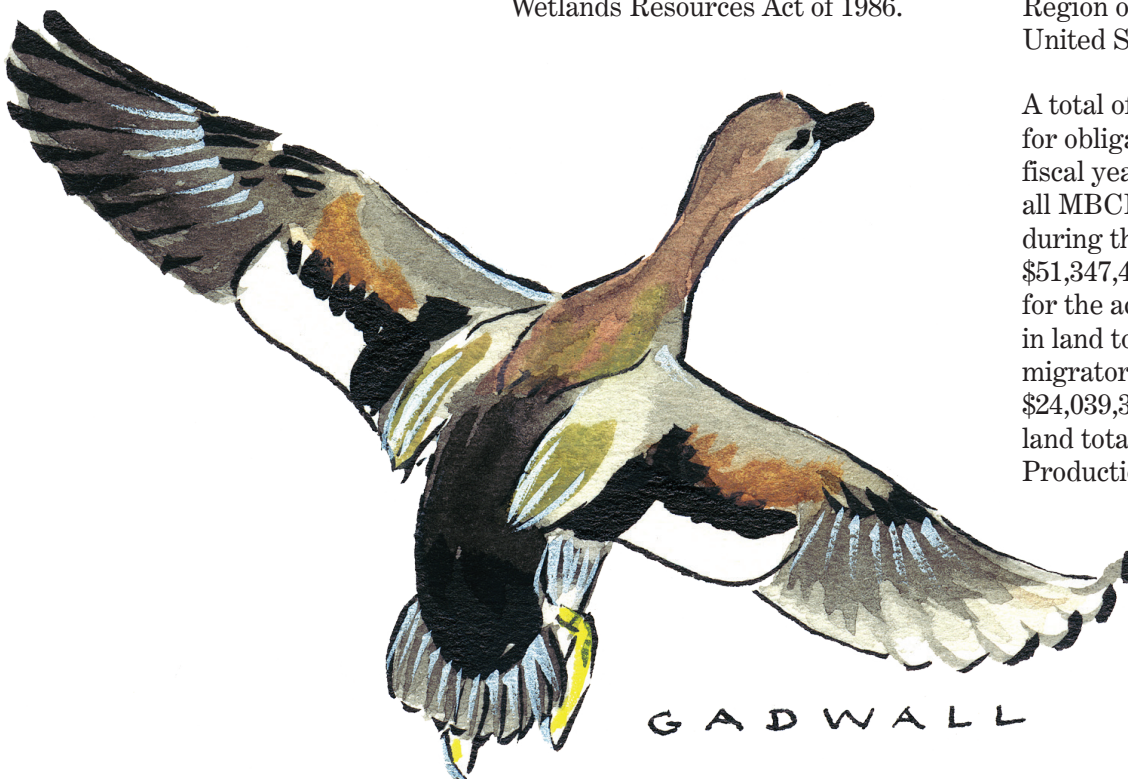
The Migratory Bird Conservation Fund

The Migratory Bird Hunting and Conservation Stamp Act of March 18, 1934 (Duck Stamp Act) created the Migratory Bird Conservation Fund (MBCF) to provide the Department of the Interior with monies to acquire migratory bird habitat.

There are three major sources of funds deposited into the MBCF account. The most well-known source is the revenue received from the sale of Migratory Bird Hunting and Conservation Stamps, commonly known as Duck Stamps, as provided for under the Duck Stamp Act. The other two major sources include appropriations authorized by the Wetlands Loan Act of October 4, 1961, as amended, and import duties collected on arms and ammunition, as provided for under the Emergency Wetlands Resources Act of 1986.

The MBCF finances two Service land acquisition programs which are administered by the Division of Realty. The first program acquires waterfowl habitat in major migratory bird conservation areas under the authority of the Migratory Bird Conservation Act of 1929. The second program acquires small natural wetlands, grasslands, and interests, known as Waterfowl Production Areas, under the authority of the Duck Stamp Act. Waterfowl Production Areas are located primarily in the Prairie Pothole Region of the upper Midwest of the United States.

A total of \$51,595,355 was available for obligation from the MBCF during fiscal year 2011. Disbursements for all MBCF land acquisition functions during the fiscal year totaled \$51,347,486. This includes \$24,564,497 for the acquisition of land and interests in land totaling 29,683 acres at major migratory bird conservation areas, and \$24,039,399 for land and interests in land totaling 21,828 acres at Waterfowl Production Areas.



**Migratory Bird
Conservation Fund (MBCF)
Approvals for
Fiscal Year 2011**

Area Approvals: New Areas

<i>Area</i>	<i>State</i>	<i>Approval Date</i>	<i>Acres</i>
Dakota Grassland CA	South Dakota	09/14/11	448,975
Nestucca Bay NWR	Oregon	06/15/11	3,435
Total			452,410

Area Approvals: Boundary Additions

<i>Area</i>	<i>State</i>	<i>Approval Date</i>	<i>Acres</i>
San Bernard NWR	Texas	06/15/11	1,544
Total			1,544

Price Approvals

<i>Area</i>	<i>State</i>	<i>Approval Date</i>	<i>Acres</i>
Bear River MBR	Utah	09/14/11	1,841
Canaan Valley NWR	West Virginia	06/15/11	73
Dakota Grassland CA	South Dakota	09/14/11	2,794
Lower Hatchie HWR	Tennessee	03/09/11	625
Nestucca Bay NWR	Oregon	06/15/11	21
San Bernard NWR	Texas	06/15/11	1,544
Savannah NWR	Georgia	09/14/11	627
Tualatin River NWR	Oregon	03/09/11	32
Tualatin River NWR	Oregon	09/14/11	28
Tulare Basin WMA	California	03/09/11	656
Total			8,241

Price Re-Approvals

<i>Area</i>	<i>State</i>	<i>Approval Date</i>	<i>Acres</i>
Dahomey NWR	Mississippi	09/14/11	260
Total			260
Grand Total			462,455

**MBCF Land Acquisitions
for Fiscal Year 2010**Land Contracted for Purchase,
Permanent Easement, or Lease*Refuge Acquisition Program***Fee Title Acquisitions**

<i>Area</i>	<i>State</i>	<i>Acres</i>	<i>Cost</i>
Bombay Hook NWR	Delaware	273	\$455,000
Bear River MBR	Utah	272	\$825,930
Cache River NWR	Arkansas	451	\$1,435,500
Great Dismal Swamp NWR	Virginia	233	\$1,409,000
Edwin B. Forsythe NWR	New Jersey	255	\$500,500
Glacial Ridge NWR	Minnesota	8,238	\$1,000,000
Humboldt Bay NWR	California	167	\$1,238,240
Lower Hatchie NWR	Tennessee	838	\$1,910,000
Umbagog NWR	Maine, New Hampshire	1,385	\$1,334,000
Nestucca Bay NWR	Oregon	21	\$105,000
Red River NWR	Louisiana	609	\$806,925
Stone Lakes NWR	California	104	\$400,000
San Bernard NWR	Texas	1,363	\$894,017
Silvio O. Conte NF&WR	New Hampshire	672	\$635,000
Tualatin River NWR	Oregon	32	\$275,000
Trinity River NWR	Texas	161	\$160,500
Upper Ouachita NWR	Louisiana	640	\$1,280,000
Wallkill River NWR	New Jersey	41	\$123,000
Total		15,753	\$14,787,612

Permanent Easement Acquisitions

<i>Area</i>	<i>State</i>	<i>Acres</i>	<i>Cost</i>
Dakota Grassland CA	South Dakota	2,263	\$1,297,075
Tulare Basin WMA	California	1,621	\$3,185,000
Total		3,884	\$4,482,075

Leases

<i>Area</i>	<i>State</i>	<i>Acres</i>	<i>Cost</i>
Dahomey NWR	Mississippi	260	\$9,100
Halfbreed Lake NWR	Montana	640	\$1,512
Lacassine NWR	Louisiana	653	\$14,900
Lost Trail NWR	Montana	240	\$262
Ouray NWR	Utah	3,845	\$19,820
Panther Swamp NWR	Mississippi	640	\$16,320
Red Rock Lakes NWR	Montana	3,266	\$10,949
St. Catherine Creek NWR	Mississippi	502	\$15,566
Total		10,046	\$88,429
<i>Refuge Acquisition Program Net Total</i>		<i>29,683</i>	<i>\$19,358,116</i>

**MBCF Land Acquisitions
for Fiscal Year 2010 (continued)**

Small Wetlands Acquisition Program

Waterfowl Production Areas

Permanent Easement Acquisitions

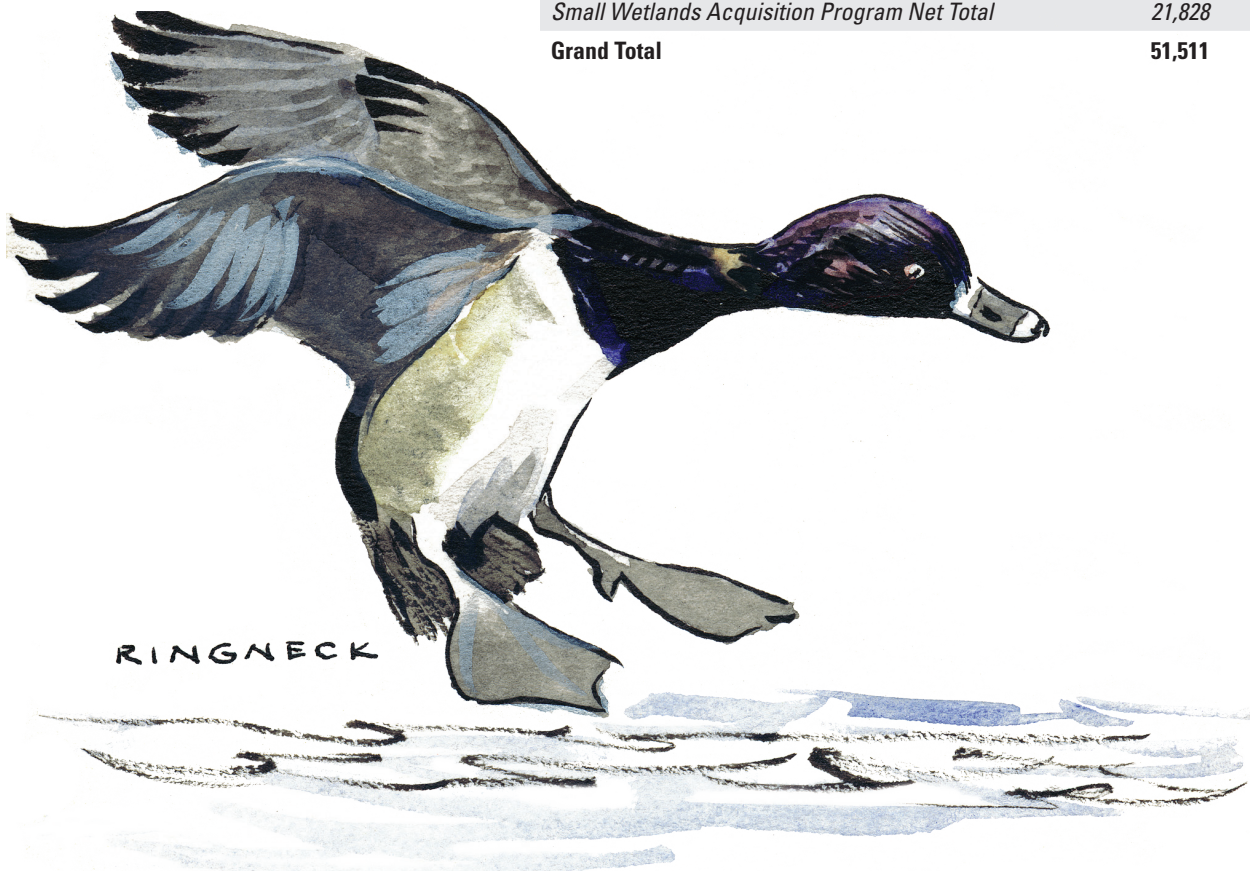
<i>State</i>	<i>Acres</i>	<i>Cost</i>
Minnesota	2,480	\$2,669,007
Montana	1,927	\$419,500
Nebraska	1	\$0
North Dakota	4,472	\$1,566,150
South Dakota	10,398	\$5,806,098
Total	19,277	\$10,460,755

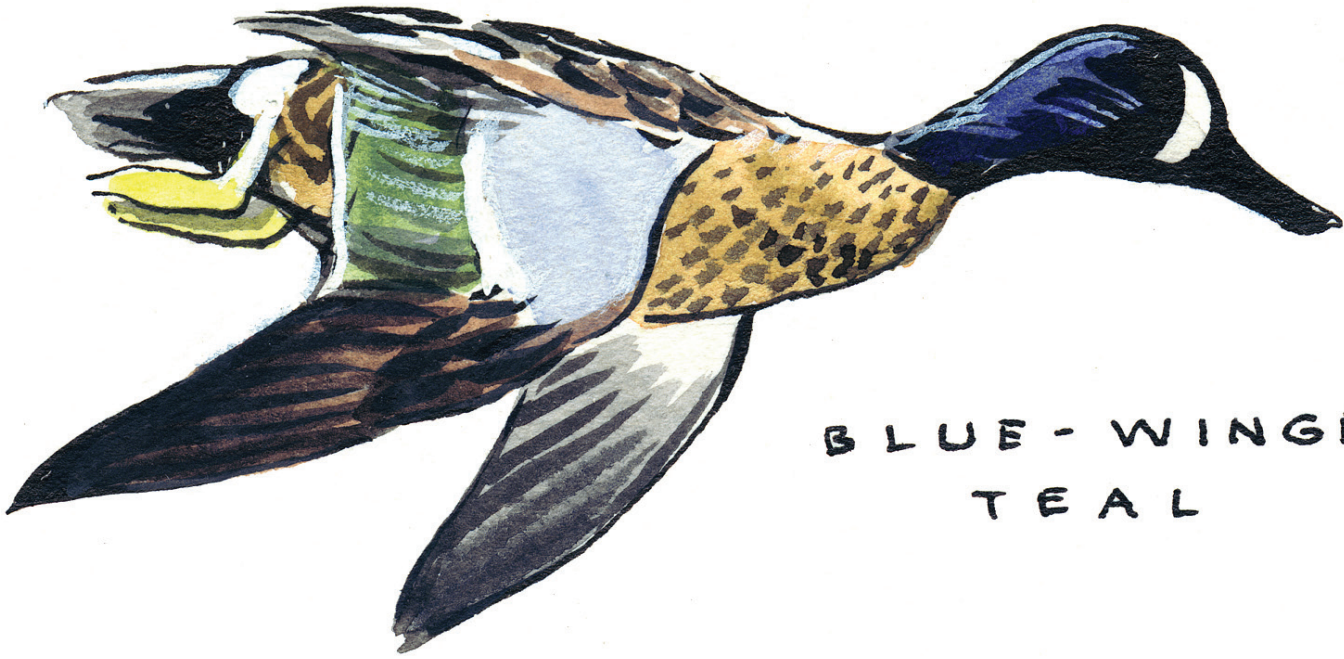
Fee Title Acquisitions

<i>State</i>	<i>Acres</i>	<i>Cost</i>
Iowa	274	\$1,274,300
Minnesota	6	\$93,500
Nebraska	0	\$0
North Dakota	7	\$14,800
South Dakota	281	\$400,000
Wisconsin	423	\$2,191,500
Total	991	\$3,974,100

Leases

<i>State</i>	<i>Acres</i>	<i>Cost</i>
Montana	1,560	\$3,778
Total	1,560	\$3,778
<i>Small Wetlands Acquisition Program Net Total</i>	<i>21,828</i>	<i>14,438,633</i>
Grand Total	51,511	\$33,796,749





BLUE-WINGED
TEAL

New Area Boundary & Boundary Addition Approvals

Following are the National Wildlife Refuge System approvals for Fiscal Year 2011.

New Area Boundary Approvals

Dakota Grassland Conservation Area

Aurora, Douglas, Edmunds, McPherson, and Walworth Counties, South Dakota

Nestucca Bay National Wildlife Refuge

Tillamook County, Oregon

Boundary Addition Approvals

San Bernard National Wildlife Refuge

Brazoria and Matagorda Counties, Texas

New Area Boundary Approval

Dakota Grassland Conservation Area

Aurora, Douglas, Edmunds, McPherson, and Walworth Counties, South Dakota

On September 14, 2011, the Migratory Bird Conservation Commission approved the 448,975-acre Dakota Grassland Conservation Area boundary, and granted price approval for the easement acquisition of 2,794 acres. The subsequent acquisition of one of the approved easements established the Refuge later that month.

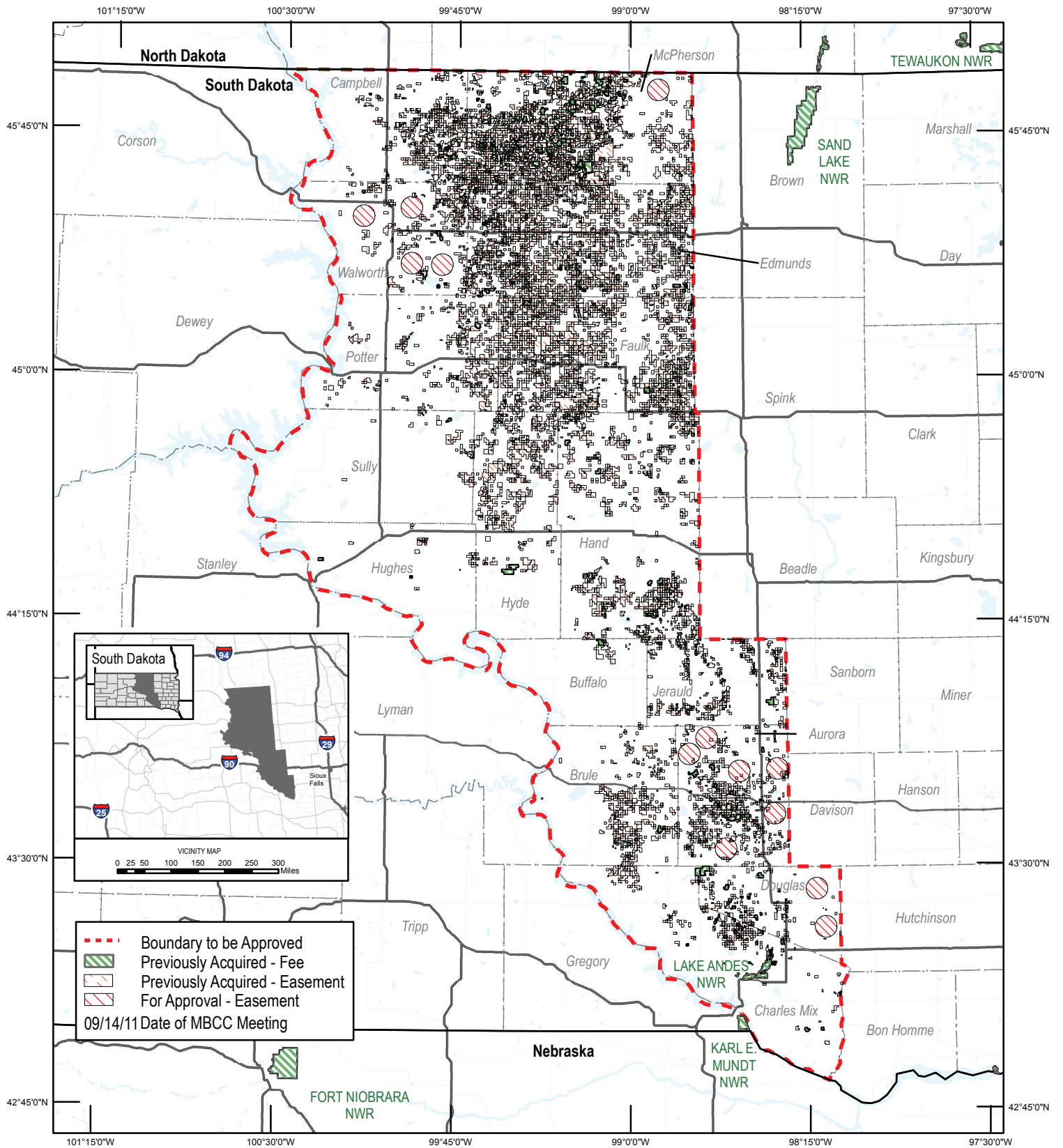
Dakota Grassland CA is located in eastern South Dakota. It lies in the Central Flyway east of the Missouri River and will eventually extend into North Dakota. The refuge is part of the Prairie Pothole Region (PPR), a biome consisting of shallow wetlands surrounded by native prairie. Due to

continued wetland and grassland conversion into cropland, the PPR is one of the most altered migratory bird habitats in the western hemisphere. One of the most important waterfowl producing areas, the PPR is often called the “Duck Factory,” producing mallard, northern pintail, gadwall, northern shoveler, blue-winged teal, lesser scaup, canvasback, and redhead.

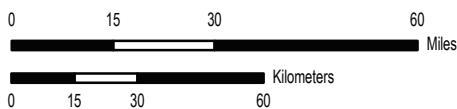
The Service will purchase both grassland conservation easements and wetland easements from willing sellers. All land under easement will remain in private ownership and may be hayed or grazed without restriction and farmed when dry from natural causes.



New Area Boundary Approval *Dakota Grassland Conservation Area*



PRODUCED IN THE DIVISION OF REFUGE PLANNING
 DENVER, COLORADO
 LAND STATUS CURRENT TO: 08/22/2011
 MAP DATE: 08/22/2011
 FIFTH PRINCIPAL MERIDIAN
 FILE: W:\UTBRR\MAPS\MBCC\BRR_SEPT_MBCC11.MXD



DISCLAIMER: Areas depicting easements lands of the U.S. Fish and Wildlife Service, National Wildlife Refuge System, are for illustrative purposes only and do not represent the acreage of wetland or grassland resources included in easement contracts.FY09 Dataset.



New Area Boundary Approval

Nestucca Bay National Wildlife Refuge

Tillamook County, Oregon

On June 15, 2011, the Migratory Bird Conservation Commission approved the 3,435-acre Nestucca Bay National Wildlife Refuge boundary, and granted price approval for the fee title acquisition of 21 acres.

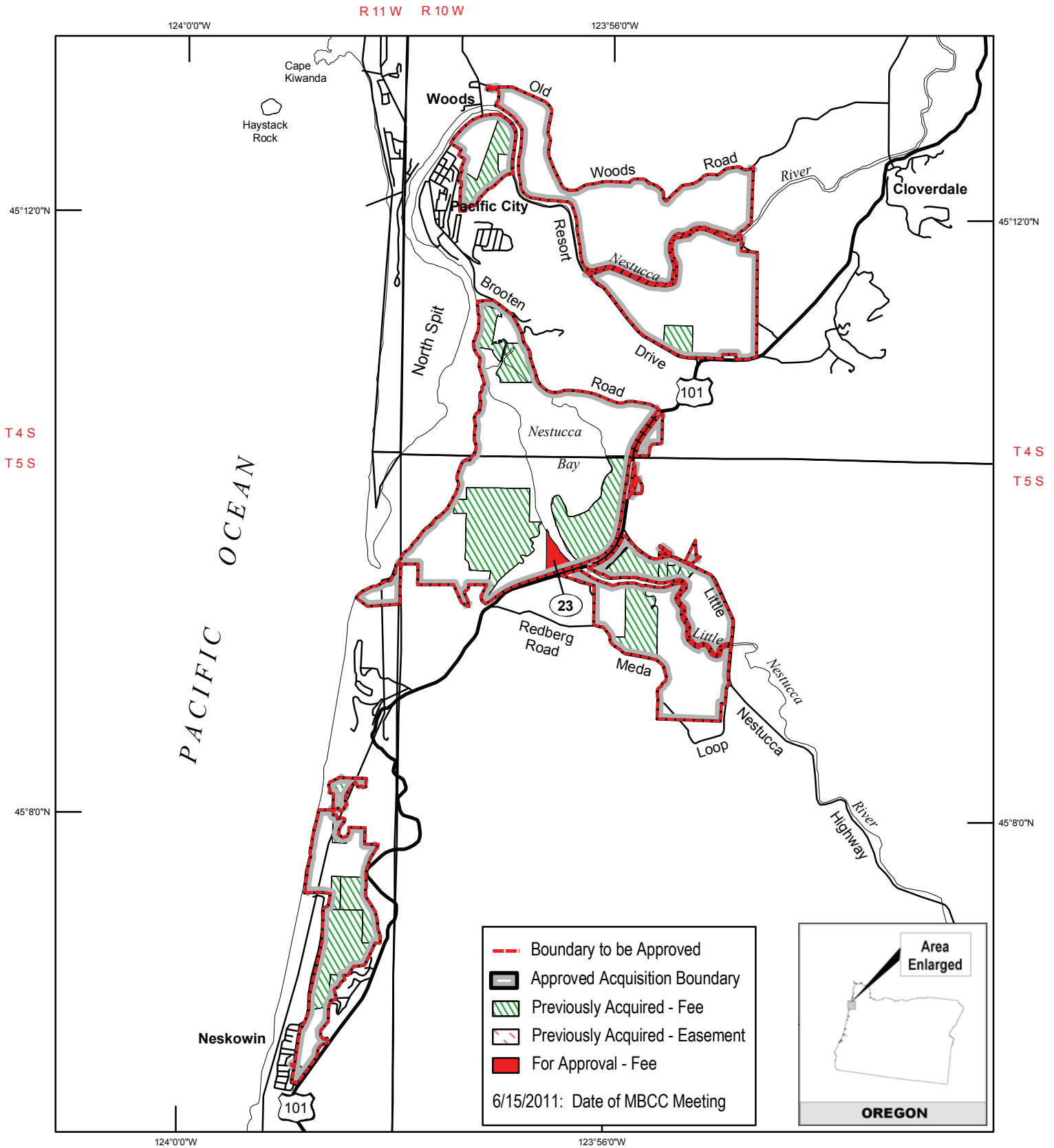
Nestucca Bay NWR is located six miles south of Pacific City, Oregon. The Refuge was established to provide wintering habitat for dusky Canada geese and Aleutian cackling geese and to protect diverse coastal wetland habitats and upland habitat buffers for a variety of migratory waterfowl, shorebirds, raptors, songbirds, and anadromous fish. It supports 10-18 percent of the world's dusky Canada goose population and 100 percent of the

unique Semidi Islands Aleutian cackling goose population, as well as mallard, northern pintail, American wigeon, and green-winged teal.

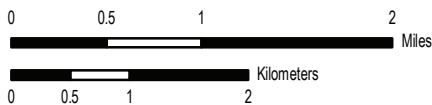
The acquired tract is on the south bank of the Little Nestucca River where it empties into Nestucca Bay. The tract was historically part of a large tidal saltmarsh system, but former owners diked, drained, and converted it to pastureland nearly a century ago. The Service will manage the diked lowland pastures to maximize forage production for wintering and migrating geese. The Service will restore native prairie and upland forests while allowing the tidal marsh, freshwater marsh, and bog areas to function naturally.



New Area Boundary Approval *Nestucca Bay National Wildlife Refuge*



PRODUCED IN THE DIVISION OF REALTY & REFUGE INFORMATION
 PORTLAND, OREGON
 LAND STATUS CURRENT TO: 03/22/2011
 MAP DATE: 04/27/2011
 BASEMAP: N/A
 MERIDIAN: WILLAMETTE
 FILE: 11-116-1.MXD



Boundary Addition Approval

San Bernard National Wildlife Refuge

Brazoria and Matagorda
Counties, Texas

On June 15, 2011, the Migratory Bird Conservation Commission granted boundary and price approval for the fee title acquisition of two tracts, totaling 1,544 acres, at the Austin's Woods Unit of the San Bernard National Wildlife Refuge.

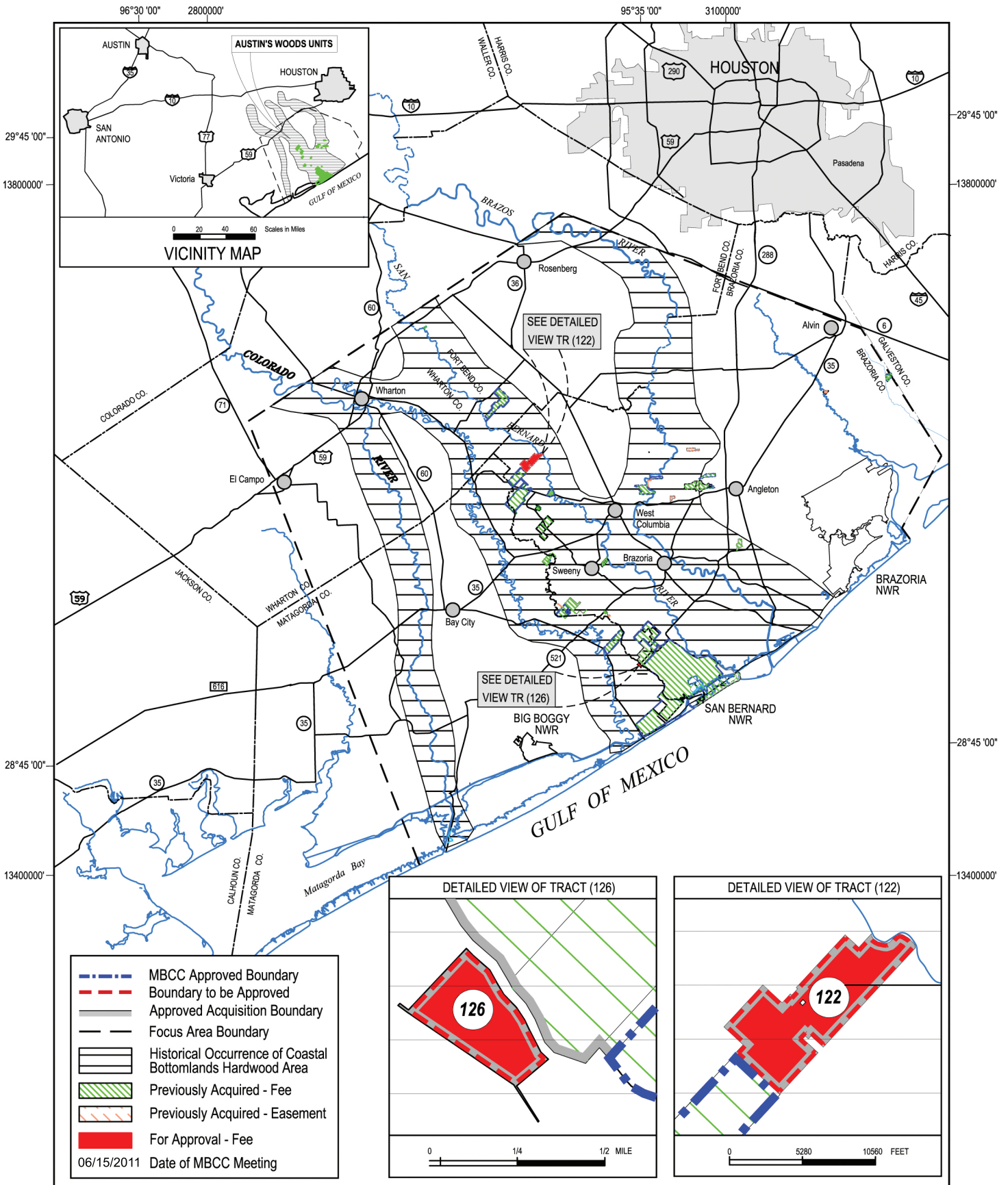
The Austin's Woods Unit is located 50 miles south of Houston, Texas. It is a productive and valuable wetland complex that provides habitat for migrating, wintering, and resident waterfowl, wading birds, neo-tropical migratory birds, and other wetland-

dependent wildlife species. Thousands of waterfowl winter in the area, including mottled ducks, mallards, northern pintails, gadwalls, widgeons, northern shovelers, blue- and green-winged teal, black-bellied whistling ducks, and ruddy ducks.

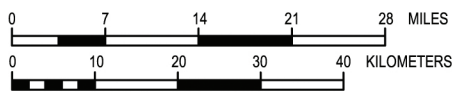
The acquired tracts contain bottomland hardwood wetland forest and grasslands. The Service will manage the lands as habitat for waterfowl, wading birds, neo-tropical migrants, and other wildlife.



Boundary Addition Approval *San Bernard National Wildlife Refuge: Austin's Woods Unit*



Produced in the Division of Realty
 Albuquerque, NM
 Land Status Current to 04/21/2011
 Base Map: USGS DRGs and other official information
 Map Projection: NAD, 1983, TX State Plane, S-C Zone, U.S. Feet
 Map Date: 04/15/2011



National Migratory Bird Refuges & Waterfowl Production Areas

The information contained in this report includes those acquisitions and dispositions of land and interests therein that are purchased with Migratory Bird Conservation Fund monies or acquired under the authority of the Migratory Bird Conservation Act. It also includes other migratory bird areas such as those that are transferred to the Fish and Wildlife Service under the authority of Public Law 80-537 to carry out a migratory bird management program.

Notes on Tables 1 and 2

In an ongoing effort to improve data quality, the figures in Tables 1 and 2 may show minor changes from previous annual reports. Lands in which the Service previously acquired a less-than-fee interest (leases and easements) may be purchased in fee during the year, and the number of easement or lease acres will show a decrease, and the number of purchased acres will show an increase. The acreage appearing in the Approvals section of this report will not appear in Tables 1 or 2 until after the Service acquires the tracts and expends the funds. Also, a newly approved refuge will not appear on Table 1 until the Service acquires the tract(s).

For information on all lands and interests under U.S. Fish and Wildlife Service control, refer to the Annual Report of Lands Under Control of the U.S. Fish and Wildlife Service. This report is available from the U.S. Fish and Wildlife Service, Division of Realty at <www.fws.gov/refuges/realty>, or by calling 703/358 1713.

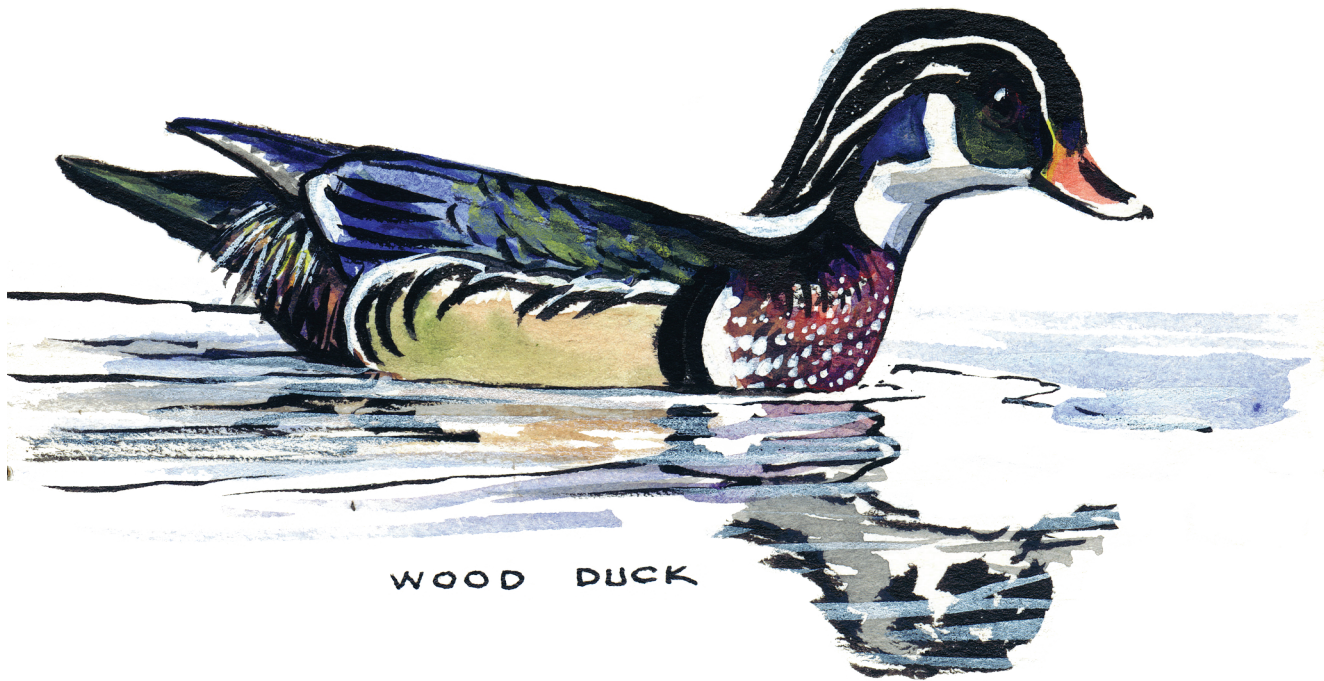


Table 1. National Migratory Bird Refuges

State and Unit	FISCAL YEAR MBCF ACQUISITION				CUMULATIVE TOTALS AT END OF FISCAL YEAR					
	Purchased		Easement or Lease		MBCF				All Other Acres	Total Acres
	Acres	Cost	Acres	Cost	Purchased		Easement or Lease			
				Acres	Cost	Acres	Cost			
Alabama										
Choctaw	0.00	\$0.00	0.00	\$0.00	0.00	\$0.00	0.00	\$0.00	4,218.00	4,218.00
Eufaula (1)	0.00	\$0.00	0.00	\$0.00	0.00	\$0.00	0.00	\$0.00	7,953.19	7,953.19
FSA Interest AL ***	0.00	\$0.00	0.00	\$0.00	0.00	\$0.00	0.00	\$0.00	742.69	742.69
Wheeler	0.00	\$0.00	0.00	\$0.00	0.00	\$0.00	0.00	\$0.00	34,430.66	34,430.66
State Total 3	0.00	\$0.00	0.00	\$0.00	0.00	\$0.00	0.00	\$0.00	47,344.54	47,344.54
Arizona										
Cibola (2)	0.00	\$0.00	0.00	\$0.00	0.00	\$0.00	0.00	\$0.00	13,199.34	13,199.34
Havasu (2)	0.00	\$0.00	0.00	\$0.00	0.00	\$0.00	0.00	\$0.00	30,279.82	30,279.82
Imperial (2)	0.00	\$0.00	0.00	\$0.00	0.00	\$0.00	0.00	\$0.00	17,809.76	17,809.76
State Total 3	0.00	\$0.00	0.00	\$0.00	0.00	\$0.00	0.00	\$0.00	61,288.92	61,288.92
Arkansas										
Bald Knob	0.00	\$0.00	0.00	\$0.00	4,748.40	\$3,427,000.00	0.00	\$0.00	10,273.95	15,022.35
Big Lake	0.00	\$0.00	0.00	\$0.00	562.91	\$31,854.69	0.25	\$3.00	10,483.79	11,046.95
Cache River	451.23	\$1,435,500.00	0.00	\$0.00	49,463.77	\$48,560,216.92	0.00	\$0.00	19,030.18	68,493.95
Felsenthal	0.00	\$0.00	0.00	\$0.00	0.00	\$0.00	0.00	\$0.00	64,902.14	64,902.14
FSA Interest AR ***	0.00	\$0.00	0.00	\$0.00	0.00	\$0.00	0.00	\$0.00	3,458.67	3,458.67
Holla Bend	0.00	\$0.00	0.00	\$0.00	690.45	\$336,903.00	0.00	\$5,175.00	5,608.58	6,299.03
Overflow	0.00	\$0.00	0.00	\$0.00	13,416.75	\$10,943,020.50	9.60	\$0.00	0.00	13,426.35
Wapanocca	0.00	\$0.00	0.00	\$0.00	5,629.25	\$1,528,416.00	0.00	\$0.00	0.00	5,629.25
White River	0.00	\$0.00	0.00	\$0.00	10,371.88	\$5,714,145.37	413.22	\$22.00	148,372.50	159,157.60
State Total 8	451.23	\$1,435,500.00	0.00	\$0.00	84,883.41	\$70,541,556.48	423.07	\$5,200.00	262,129.81	347,436.29
California										
Butte Sink	0.00	\$0.00	0.00	\$0.00	514.98	\$1,650,700.00	10,310.64	\$12,816,903.00	217.88	11,043.50
Cibola (3)*	0.00	\$0.00	0.00	\$0.00	0.00	\$0.00	0.00	\$0.00	5,245.33	5,245.33
Colusa	0.00	\$0.00	0.00	\$0.00	2,384.74	\$107,313.30	0.00	\$0.00	1,655.24	4,039.98
Delevan	0.00	\$0.00	0.00	\$0.00	5,796.54	\$2,345,739.00	0.00	\$175,000.00	0.00	5,796.54
Don Edwards San Fran. Bay	0.00	\$0.00	0.00	\$0.00	0.00	\$0.00	0.00	\$0.00	29,398.00	29,398.00
FSA Interest CA ***	0.00	\$0.00	0.00	\$0.00	0.00	\$0.00	0.00	\$0.00	6,673.24	6,673.24
Grasslands	0.00	\$0.00	0.00	\$0.00	6,442.28	\$9,158,896.00	72,840.10	\$40,224,459.00	12,556.27	91,838.65
Havasu (3)*	0.00	\$0.00	0.00	\$0.00	0.00	\$0.00	0.00	\$0.00	7,235.34	7,235.34
Humboldt Bay	166.74	\$1,238,240.00	0.00	\$0.00	2,884.34	\$6,492,650.00	0.00	\$0.00	666.01	3,550.35
Imperial (3)*	0.00	\$0.00	0.00	\$0.00	0.00	\$0.00	0.00	\$0.00	8,198.19	8,198.19
Kern	0.00	\$0.00	0.00	\$0.00	10,543.86	\$579,912.00	0.00	\$0.00	705.31	11,249.17
Lower Klamath (4)	0.00	\$0.00	0.00	\$0.00	4,530.53	\$3,390,123.00	0.00	\$0.00	39,764.02	44,294.55
Merced	0.00	\$0.00	0.00	\$0.00	3,803.82	\$2,180,000.00	0.00	\$0.00	1.76	3,805.58
Modoc	0.00	\$0.00	0.00	\$0.00	5,359.58	\$1,077,634.19	0.00	\$0.00	1,711.65	7,071.23
North Central Valley	0.00	\$0.00	0.00	\$0.00	1,033.28	\$4,445,531.00	9,446.32	\$14,729,148.00	7,365.52	17,845.12
Pixley	0.00	\$0.00	0.00	\$0.00	0.00	\$0.00	0.00	\$0.00	7,156.66	7,156.66
Sacramento	0.00	\$0.00	0.00	\$0.00	10,775.61	\$150,498.00	0.00	\$0.00	43.39	10,819.00
Sacramento River	0.00	\$0.00	0.00	\$0.00	126.40	\$145,000.00	0.00	\$0.00	11,495.69	11,622.09
San Joaquin River	0.00	\$0.00	0.00	\$0.00	1,239.18	\$7,030,819.00	0.00	\$0.00	9,395.30	10,634.48
San Luis	0.00	\$0.00	0.00	\$0.00	7,422.41	\$2,171,055.00	703.00	\$2,284,000.00	10,337.00	18,462.41
San Pablo Bay	0.00	\$0.00	0.00	\$0.00	248.00	\$243,400.00	0.00	\$0.00	16,251.72	16,499.72
Seal Beach	0.00	\$0.00	0.00	\$0.00	0.00	\$0.00	0.00	\$0.00	910.71	910.71
Sonny Bono Salton Sea	0.00	\$0.00	0.00	\$0.00	9,342.14	\$294,461.80	637.00	\$1,089.27	27,679.73	37,658.87
Stone Lakes	104.43	\$400,000.00	0.00	\$0.00	214.61	\$1,240,000.00	138.56	\$365,800.00	6,058.90	6,412.07
Sutter	0.00	\$0.00	0.00	\$0.00	2,590.16	\$291,281.80	0.00	\$3,850.00	0.00	2,590.16
Tulare Basin	0.00	\$0.00	1,621.00	\$3,185,000.00	0.00	\$0.00	2,663.00	\$4,694,585.00	89.44	2,752.44
Tule Lake	0.00	\$0.00	0.00	\$0.00	0.00	\$0.00	0.00	\$0.00	39,116.58	39,116.58
Willow Creek-Lurline	0.00	\$0.00	0.00	\$0.00	0.00	\$0.00	5,786.70	\$7,173,433.00	14.10	5,800.80
State Total 24	271.17	\$1,638,240.00	1,621.00	\$3,185,000.00	75,252.46	\$42,995,014.09	102,525.32	\$82,468,267.27	249,942.98	427,720.76
Colorado										
Alamosa	0.00	\$0.00	0.00	\$0.00	10,904.78	\$2,377,463.16	0.00	\$24,035.90	1,121.59	12,026.37
Arapaho	0.00	\$0.00	0.00	\$0.00	17,811.33	\$4,798,286.00	23.23	\$35,358.66	7,686.84	25,521.40
Browns Park	0.00	\$0.00	0.00	\$0.00	5,275.63	\$614,976.00	0.00	\$68,118.76	6,874.25	12,149.88
FSA Interest CO ***	0.00	\$0.00	0.00	\$0.00	0.00	\$0.00	0.00	\$0.00	1,206.64	1,206.64
Monte Vista	0.00	\$0.00	0.00	\$0.00	13,950.66	\$2,241,750.00	0.00	\$0.00	883.33	14,833.99
State Total 4	0.00	\$0.00	0.00	\$0.00	47,942.40	\$10,032,475.16	23.23	\$127,513.32	17,772.65	65,738.28

Table 1. National Migratory Bird Refuges

State and Unit	FISCAL YEAR MBCF ACQUISITION				CUMULATIVE TOTALS AT END OF FISCAL YEAR						
	Purchased		Easement or Lease		MBCF				All Other Acres	Total Acres	
	Acres	Cost	Acres	Cost	Purchased		Easement or Lease				
				Acres	Cost	Acres	Cost				
Connecticut											
Stewart B. Mckinney	0.00	\$0.00	0.00	\$0.00	361.24	\$2,263,560.00	0.00	\$0.00	585.94	947.18	
State Total	1	0.00	\$0.00	0.00	\$0.00	361.24	\$2,263,560.00	0.00	\$0.00	585.94	947.18
Delaware											
Bombay Hook	273.00	\$455,000.00	0.00	\$0.00	15,551.48	\$2,074,738.56	0.00	\$1.00	779.28	16,330.76	
FSA Interest DE	***	0.00	\$0.00	0.00	\$0.00	0.00	\$0.00	0.00	\$0.00	2.60	2.60
Prime Hook	0.00	\$0.00	0.00	\$0.00	8,286.06	\$3,741,318.16	79.19	\$5,346.20	1,775.95	10,141.20	
State Total	2	273.00	\$455,000.00	0.00	\$0.00	23,837.54	\$5,816,056.72	79.19	\$5,347.20	2,557.83	26,474.56
Florida											
Arthur R. Marshall	0.00	\$0.00	0.00	\$0.00	2,549.77	\$118,511.97	0.00	\$0.00	141,404.00	143,953.77	
Caloosahatchee	0.00	\$0.00	0.00	\$0.00	0.00	\$0.00	0.00	\$0.00	40.00	40.00	
Cedar Keys	0.00	\$0.00	0.00	\$0.00	0.00	\$0.00	0.00	\$0.00	891.15	891.15	
Chassahowitzka	0.00	\$0.00	0.00	\$0.00	22,556.82	\$267,529.26	0.00	\$0.00	8,286.09	30,842.91	
Egmont Key	0.00	\$0.00	0.00	\$0.00	0.00	\$0.00	0.00	\$0.00	328.30	328.30	
FSA Interest FL	***	0.00	\$0.00	0.00	\$0.00	0.00	\$0.00	0.00	\$0.00	3,057.15	3,057.15
Great White Heron	0.00	\$0.00	0.00	\$0.00	1,326.54	\$906,195.00	0.00	\$0.00	116,395.99	117,722.53	
Hobe Sound	0.00	\$0.00	0.00	\$0.00	0.00	\$0.00	0.00	\$0.00	1,035.63	1,035.63	
J. N. Ding Darling	0.00	\$0.00	0.00	\$0.00	541.98	\$372,370.00	0.00	\$0.00	5,864.81	6,406.79	
Lake Woodruff	0.00	\$0.00	0.00	\$0.00	18,413.39	\$1,340,310.75	0.00	\$0.00	3,145.63	21,559.02	
Matlacha Pass	0.00	\$0.00	0.00	\$0.00	0.00	\$0.00	0.00	\$0.00	564.73	564.73	
Merritt Island	0.00	\$0.00	0.00	\$0.00	0.00	\$0.00	0.00	\$0.00	139,196.47	139,196.47	
Okefenokee	(1)	0.00	\$0.00	0.00	\$0.00	0.00	\$0.00	0.00	\$0.00	3,724.48	3,724.48
Pine Island	0.00	\$0.00	0.00	\$0.00	0.00	\$0.00	0.00	\$0.00	602.24	602.24	
Pinellas	0.00	\$0.00	0.00	\$0.00	0.00	\$0.00	0.00	\$0.00	394.35	394.35	
St. Marks	0.00	\$0.00	0.00	\$0.00	30,985.17	\$102,311.61	0.00	\$0.00	38,253.40	69,238.57	
St. Vincent	0.00	\$0.00	0.00	\$0.00	12,358.20	\$2,035,000.00	0.00	\$0.00	131.73	12,489.93	
State Total	16	0.00	\$0.00	0.00	\$0.00	88,731.87	\$5,142,228.59	0.00	\$0.00	463,316.15	552,048.02
Georgia											
Bond Swamp	0.00	\$0.00	0.00	\$0.00	256.41	\$1,000,000.00	0.00	\$0.00	6,615.94	6,872.35	
Eufaula	(5)*	0.00	\$0.00	0.00	\$0.00	0.00	\$0.00	0.00	\$0.00	3,231.00	3,231.00
FSA Interest GA	***	0.00	\$0.00	0.00	\$0.00	0.00	\$0.00	0.00	\$0.00	4,940.33	4,940.33
Harris Neck	0.00	\$0.00	0.00	\$0.00	0.00	\$0.00	0.00	\$0.00	2,822.68	2,822.68	
Okefenokee	(6)*	0.00	\$0.00	0.00	\$0.00	344,341.83	\$867,318.12	0.00	\$0.00	55,052.99	399,394.82
Piedmont	0.00	\$0.00	0.00	\$0.00	473.97	\$44,000.00	0.00	\$0.00	34,493.01	34,966.98	
Savannah	(7)	0.00	\$0.00	0.00	\$0.00	8,027.84	\$1,705,352.40	0.00	\$0.00	6,135.64	14,163.48
Wassaw	0.00	\$0.00	0.00	\$0.00	0.00	\$0.00	0.00	\$0.00	10,053.30	10,053.30	
Wolf Island	0.00	\$0.00	0.00	\$0.00	4,587.82	\$120,813.52	0.00	\$0.00	538.00	5,125.82	
State Total	6	0.00	\$0.00	0.00	\$0.00	357,687.87	\$3,737,484.04	0.00	\$0.00	123,882.89	481,570.76
Idaho											
Bear Lake	0.00	\$0.00	0.00	\$0.00	626.57	\$212,279.30	0.00	\$1.00	17,582.09	18,208.66	
Camas	0.00	\$0.00	0.00	\$0.00	10,438.46	\$202,700.84	0.00	\$0.00	139.88	10,578.34	
Deer Flat	(4)	0.00	\$0.00	0.00	\$0.00	242.89	\$26,415.50	0.00	\$0.00	10,584.68	10,827.57
FSA Interest ID	***	0.00	\$0.00	0.00	\$0.00	0.00	\$0.00	0.00	\$0.00	1,300.57	1,300.57
Grays Lake	0.00	\$0.00	0.00	\$0.00	4,038.18	\$1,843,000.00	32.49	\$4,518.30	16,054.41	20,125.08	
Kootenai	0.00	\$0.00	0.00	\$0.00	2,774.15	\$708,100.00	0.00	\$0.00	0.14	2,774.29	
State Total	5	0.00	\$0.00	0.00	\$0.00	18,120.25	\$2,992,495.64	32.49	\$4,519.30	45,661.77	63,814.51
Illinois											
Chautauqua	0.00	\$0.00	0.00	\$0.00	44.54	\$2,525.38	0.00	\$0.00	6,436.02	6,480.56	
Crab Orchard	0.00	\$0.00	0.00	\$0.00	651.07	\$0.00	0.00	\$0.00	43,324.46	43,975.53	
FSA Interest IL	***	0.00	\$0.00	0.00	\$0.00	0.00	\$0.00	0.00	\$0.00	335.40	335.40
Great River	(8)	0.00	\$0.00	0.00	\$0.00	1,559.87	\$353,202.72	0.00	\$0.00	5,550.76	7,110.63
Meredosia	0.00	\$0.00	0.00	\$0.00	0.00	\$0.00	0.00	\$0.00	3,400.80	3,400.80	
Middle Mississippi River	(8)	0.00	\$0.00	0.00	\$0.00	0.00	\$0.00	0.00	\$0.00	6,370.98	6,370.98
Port Louisa	(19)	0.00	\$0.00	0.00	\$0.00	0.00	\$0.00	0.00	\$0.00	1,470.89	1,470.89
Two Rivers	(8)	0.00	\$0.00	0.00	\$0.00	796.17	\$346,943.75	0.00	\$0.00	7,237.03	8,033.20
State Total	7	0.00	\$0.00	0.00	\$0.00	3,051.65	\$702,671.85	0.00	\$0.00	74,126.34	77,177.99
Indiana											
FSA Interest IN	***	0.00	\$0.00	0.00	\$0.00	0.00	\$0.00	0.00	\$0.00	219.03	219.03
Muscatatuck	0.00	\$0.00	0.00	\$0.00	7,713.53	\$3,582,837.72	0.00	\$0.00	88.69	7,802.22	
State Total	1	0.00	\$0.00	0.00	\$0.00	7,713.53	\$3,582,837.72	0.00	\$0.00	307.72	8,021.25

Table 1. National Migratory Bird Refuges

State and Unit	FISCAL YEAR MBCF ACQUISITION				CUMULATIVE TOTALS AT END OF FISCAL YEAR					
	Purchased		Easement or Lease		MBCF				All Other Acres	Total Acres
	Acres	Cost	Acres	Cost	Purchased		Easement or Lease			
				Acres	Cost	Acres	Cost			
Iowa										
Desoto (10)	0.00	\$0.00	0.00	\$0.00	3,444.79	\$639,117.53	0.00	\$0.00	57.98	3,502.77
Port Louisa (11)*	0.00	\$0.00	0.00	\$0.00	47.50	\$16,000.00	0.00	\$0.00	22,596.86	22,644.36
Union Slough	0.00	\$0.00	0.00	\$0.00	2,845.24	\$210,406.69	70.70	\$608.00	0.00	2,915.94
State Total 2	0.00	\$0.00	0.00	\$0.00	6,337.53	\$865,524.22	70.70	\$608.00	22,654.84	29,063.07
Kansas										
Flint Hills	0.00	\$0.00	0.00	\$0.00	0.00	\$0.00	0.00	\$0.00	18,463.36	18,463.36
FSA Interest KS ***	0.00	\$0.00	0.00	\$0.00	0.00	\$0.00	0.00	\$0.00	116.50	116.50
Kirwin	0.00	\$0.00	0.00	\$0.00	0.00	\$0.00	0.00	\$0.00	10,778.00	10,778.00
Quivira	0.00	\$0.00	0.00	\$0.00	21,820.10	\$2,059,238.00	0.00	\$0.00	199.20	22,019.30
State Total 3	0.00	\$0.00	0.00	\$0.00	21,820.10	\$2,059,238.00	0.00	\$0.00	29,557.06	51,377.16
Kentucky										
Reelfoot (14)	0.00	\$0.00	0.00	\$0.00	2,039.64	\$418,450.15	0.00	\$0.00	0.00	2,039.64
State Total 1	0.00	\$0.00	0.00	\$0.00	2,039.64	\$418,450.15	0.00	\$0.00	0.00	2,039.64
Louisiana										
Bayou Cocodrie	0.00	\$0.00	0.00	\$0.00	5,222.20	\$3,697,578.00	0.00	\$0.00	9,496.31	14,718.51
Bayou Sauvage	0.00	\$0.00	0.00	\$0.00	2,027.40	\$1,112,500.00	0.00	\$0.00	22,670.46	24,697.86
Black Bayou Lake	0.00	\$0.00	0.00	\$0.00	88.60	\$150,000.00	0.00	\$0.00	4,433.71	4,522.31
Cameron Prairie	0.00	\$0.00	0.00	\$0.00	9,621.30	\$5,090,650.00	0.00	\$0.00	14,926.73	24,548.03
Cat Island	0.00	\$0.00	0.00	\$0.00	1,641.44	\$2,576,000.00	0.00	\$0.00	8,832.91	10,474.35
Catahoula	0.00	\$0.00	0.00	\$0.00	14,869.86	\$2,190,082.25	0.00	\$0.00	10,154.05	25,023.91
D'Arbonne	0.00	\$0.00	0.00	\$0.00	0.00	\$0.00	0.00	\$0.00	17,419.63	17,419.63
Delta	0.00	\$0.00	0.00	\$0.00	34,462.73	\$233,324.17	0.00	\$0.00	14,336.37	48,799.10
FSA Interest LA ***	0.00	\$0.00	0.00	\$0.00	0.00	\$0.00	0.00	\$0.00	10,873.54	10,873.54
Grand Cote	0.00	\$0.00	0.00	\$0.00	264.56	\$876,173.00	0.00	\$0.00	5,997.00	6,261.56
Lacassine	0.00	\$0.00	0.00	\$14,900.00	9,886.29	\$999,156.43	640.00	\$286,400.00	23,839.97	34,366.26
Lake Ophelia	0.00	\$0.00	0.00	\$0.00	3,064.90	\$1,451,930.00	0.00	\$0.00	14,496.56	17,561.46
Mandalay	0.00	\$0.00	0.00	\$0.00	0.00	\$0.00	0.00	\$0.00	4,619.73	4,619.73
Red River	609.00	\$806,925.00	0.00	\$0.00	3,541.43	\$3,682,835.00	0.00	\$0.00	9,474.50	13,015.93
Sabine	0.00	\$0.00	0.00	\$0.00	566.66	\$14,000.51	0.00	\$0.00	125,223.42	125,790.08
Tensas River	0.00	\$0.00	0.00	\$0.00	1,507.78	\$1,220,227.00	0.00	\$0.00	74,739.43	76,247.21
Upper Ouachita	639.60	\$1,280,000.00	0.00	\$0.00	42,823.18	\$22,412,902.00	0.00	\$1,823,540.00	3,921.91	46,745.09
State Total 16	1,248.60	\$2,086,925.00	0.00	\$14,900.00	129,588.33	\$45,707,358.36	640.00	\$2,109,940.00	375,456.23	505,684.56
Maine										
Aroostook	0.00	\$0.00	0.00	\$0.00	0.00	\$0.00	0.00	\$0.00	5,252.25	5,252.25
Cross Island	0.00	\$0.00	0.00	\$0.00	0.00	\$0.00	0.00	\$0.00	1,703.10	1,703.10
Franklin Island	0.00	\$0.00	0.00	\$0.00	0.00	\$0.00	0.00	\$0.00	11.94	11.94
FSA Interest ME ***	0.00	\$0.00	0.00	\$0.00	0.00	\$0.00	0.00	\$0.00	622.08	622.08
Moosehorn	0.00	\$0.00	0.00	\$0.00	19,782.52	\$2,023,308.59	0.00	\$0.00	9,552.21	29,334.73
Petit Manan	0.00	\$0.00	0.00	\$0.00	1,472.30	\$350,000.00	0.00	\$0.00	4,935.76	6,408.06
Pond Island	0.00	\$0.00	0.00	\$0.00	0.00	\$0.00	0.00	\$0.00	10.00	10.00
Rachel Carson	0.00	\$0.00	0.00	\$0.00	2,870.31	\$1,539,347.75	2.97	\$3,100.00	2,517.57	5,390.85
Seal Island	0.00	\$0.00	0.00	\$0.00	0.00	\$0.00	0.00	\$0.00	65.00	65.00
Sunkhaze Meadows	0.00	\$0.00	0.00	\$0.00	1,170.00	\$250,500.00	0.00	\$0.00	10,265.71	11,435.71
Umbagog (36)*	275.27	\$239,000.00	0.00	\$0.00	3,993.24	\$1,926,119.70	0.00	\$0.00	3,934.16	7,927.40
State Total 9	275.27	\$239,000.00	0.00	\$0.00	29,288.37	\$6,089,276.04	2.97	\$3,100.00	38,869.78	68,161.12
Maryland										
Blackwater	0.00	\$0.00	0.00	\$0.00	20,491.19	\$12,435,183.86	0.00	\$0.00	6,755.72	27,246.91
Chincoteague (16)*	0.00	\$0.00	0.00	\$0.00	417.81	\$13,780.42	0.00	\$0.00	0.00	417.81
Eastern Neck	0.00	\$0.00	0.00	\$0.00	2,286.27	\$1,606,145.09	0.00	\$0.00	0.00	2,286.27
FSA Interest MD ***	0.00	\$0.00	0.00	\$0.00	0.00	\$0.00	0.00	\$0.00	67.94	67.94
Martin (16)	0.00	\$0.00	0.00	\$0.00	1,853.57	\$61,027.00	0.00	\$0.00	2,569.86	4,423.43
Patuxent	0.00	\$0.00	0.00	\$0.00	431.93	\$7,667.57	0.00	\$0.00	12,409.00	12,840.93
Susquehanna	0.00	\$0.00	0.00	\$0.00	0.00	\$0.00	0.00	\$0.00	3.79	3.79
State Total 5	0.00	\$0.00	0.00	\$0.00	25,480.77	\$14,123,803.94	0.00	\$0.00	21,806.31	47,287.08
Massachusetts										
Assabet River	0.00	\$0.00	0.00	\$0.00	103.38	\$125,273.00	0.00	\$0.00	2,229.20	2,332.58
Great Meadows	0.00	\$0.00	0.00	\$0.00	2,902.81	\$2,209,918.90	0.00	\$0.00	947.00	3,849.81
Monomoy	0.00	\$0.00	0.00	\$0.00	7,435.46	\$18,339.00	0.00	\$0.00	168.54	7,604.00
Nantucket	0.00	\$0.00	0.00	\$0.00	0.00	\$0.00	0.00	\$0.00	24.00	24.00
Nomans Land Island	0.00	\$0.00	0.00	\$0.00	0.00	\$0.00	0.00	\$0.00	628.00	628.00

Table 1. National Migratory Bird Refuges

State and Unit	FISCAL YEAR MBCF ACQUISITION				CUMULATIVE TOTALS AT END OF FISCAL YEAR					
	Purchased		Easement or Lease		MBCF				All Other Acres	Total Acres
	Acres	Cost	Acres	Cost	Purchased		Easement or Lease			
				Acres	Cost	Acres	Cost			
Massachusetts (Continued)										
Oxbow	0.00	\$0.00	0.00	\$0.00	0.00	\$0.00	0.00	\$0.00	1,677.02	1,677.02
Parker River	0.00	\$0.00	0.00	\$0.00	4,617.79	\$107,740.84	0.00	\$0.00	109.42	4,727.21
Silvio O. Conte (41)*	0.00	\$0.00	0.00	\$0.00	230.38	\$371,361.00	0.00	\$0.00	450.97	681.35
Thacher Island	0.00	\$0.00	0.00	\$0.00	0.00	\$0.00	0.00	\$0.00	22.00	22.00
State Total 8	0.00	\$0.00	0.00	\$0.00	15,289.82	\$2,832,632.74	0.00	\$0.00	6,256.15	21,545.97
Michigan										
Detroit River	0.00	\$0.00	0.00	\$0.00	283.95	\$1,749,068.00	0.00	\$0.00	5,476.51	5,760.46
FSA Interest MI ***	0.00	\$0.00	0.00	\$0.00	0.00	\$0.00	0.00	\$0.00	94.00	94.00
Michigan Islands	0.00	\$0.00	0.00	\$0.00	0.00	\$0.00	0.00	\$0.00	744.39	744.39
Seney	0.00	\$0.00	0.00	\$0.00	44,201.80	\$127,726.66	0.00	\$0.00	51,043.01	95,244.81
Shiawassee	0.00	\$0.00	0.00	\$0.00	8,376.46	\$1,401,015.67	0.00	\$0.00	1,178.05	9,554.51
State Total 4	0.00	\$0.00	0.00	\$0.00	52,862.21	\$3,277,810.33	0.00	\$0.00	58,535.96	111,398.17
Minnesota										
Agassiz	0.00	\$0.00	0.00	\$0.00	700.11	\$40,226.04	0.00	\$0.00	60,800.82	61,500.93
Big Stone	0.00	\$0.00	0.00	\$0.00	0.00	\$0.00	0.00	\$0.00	11,585.42	11,585.42
FSA Interest MN ***	0.00	\$0.00	0.00	\$0.00	0.00	\$0.00	0.00	\$0.00	2,561.80	2,561.80
Glacial Ridge	8,238.47	\$1,000,000.00	0.00	\$0.00	11,775.47	\$2,000,000.00	0.00	\$0.00	5,754.58	17,530.05
Hamden Slough	0.00	\$0.00	0.00	\$0.00	3,136.45	\$1,832,872.00	73.40	\$0.00	0.00	3,209.85
Rice Lake	0.00	\$0.00	0.00	\$0.00	6,435.60	\$197,329.77	0.00	\$0.00	10,036.68	16,472.28
Rydell	0.00	\$0.00	0.00	\$0.00	0.00	\$0.00	0.00	\$0.00	2,070.00	2,070.00
Sherburne	0.00	\$0.00	0.00	\$0.00	29,556.90	\$3,273,341.05	0.00	\$0.00	120.94	29,677.84
Tamarac	0.00	\$0.00	0.00	\$0.00	35,151.38	\$612,159.93	0.00	\$0.00	45.50	35,196.88
State Total 8	8,238.47	\$1,000,000.00	0.00	\$0.00	86,755.91	\$7,955,928.79	73.40	\$0.00	92,975.74	179,805.05
Mississippi										
Coldwater River	0.00	\$0.00	0.00	\$0.00	2,694.10	\$2,198,450.00	0.00	\$0.00	94.26	2,788.36
Dahomey	0.00	\$0.00	0.00	\$9,100.00	0.00	\$0.00	260.00	\$44,200.00	8,906.80	9,166.80
FSA Interest MS ***	0.00	\$0.00	0.00	\$0.00	0.00	\$0.00	0.00	\$0.00	18,268.64	18,268.64
Hillside	0.00	\$0.00	0.00	\$0.00	291.43	\$164,500.00	0.00	\$0.00	15,407.37	15,698.80
Mathews Brake	0.00	\$0.00	0.00	\$0.00	2,406.07	\$1,691,446.00	0.00	\$0.00	8.64	2,414.71
Morgan Brake	0.00	\$0.00	0.00	\$0.00	7,241.28	\$4,517,482.20	0.00	\$0.00	131.83	7,373.11
Noxubee	0.00	\$0.00	0.00	\$0.00	1,427.14	\$145,413.05	0.00	\$0.00	45,725.15	47,152.29
Panther Swamp	0.00	\$0.00	0.00	\$16,320.00	32,243.96	\$20,453,483.00	640.00	\$206,310.00	7,765.06	40,649.02
St. Catherine Creek	0.00	\$0.00	0.00	\$15,566.00	24,429.29	\$12,925,167.00	502.10	\$115,001.02	160.00	25,091.39
Tallahatchie	0.00	\$0.00	0.00	\$0.00	2,324.14	\$1,361,000.00	0.00	\$0.00	2,070.00	4,394.14
Yazoo	0.00	\$0.00	0.00	\$0.00	12,940.43	\$2,659,743.78	0.00	\$32,760.00	2.21	12,942.64
State Total 10	0.00	\$0.00	0.00	\$40,986.00	85,997.84	\$46,116,685.03	1,402.10	\$398,271.02	98,539.96	185,939.90
Missouri										
Clarence Cannon	0.00	\$0.00	0.00	\$0.00	3,736.04	\$1,163,649.25	0.00	\$0.00	14.44	3,750.48
FSA Interest MO ***	0.00	\$0.00	0.00	\$0.00	0.00	\$0.00	0.00	\$0.00	1,784.68	1,784.68
Great River (11)*	0.00	\$0.00	0.00	\$0.00	1,119.78	\$460,000.00	0.00	\$0.00	988.15	2,107.93
Middle Mississippi River (11)*	0.00	\$0.00	0.00	\$0.00	0.00	\$0.00	0.00	\$0.00	1,704.17	1,704.17
Mingo	0.00	\$0.00	0.00	\$0.00	21,535.95	\$298,615.82	11.86	\$27.00	113.24	21,661.05
Squaw Creek	0.00	\$0.00	0.00	\$0.00	801.32	\$38,275.46	1.00	\$0.00	6,612.57	7,414.89
Swan Lake	0.00	\$0.00	0.00	\$0.00	5,379.32	\$355,193.19	0.00	\$0.00	6,113.65	11,492.97
Two Rivers (11)*	0.00	\$0.00	0.00	\$0.00	0.00	\$0.00	0.00	\$0.00	232.00	232.00
State Total 4	0.00	\$0.00	0.00	\$0.00	32,572.41	\$2,315,733.72	12.86	\$27.00	17,562.90	50,148.17
Montana										
Benton Lake	0.00	\$0.00	0.00	\$0.00	147.64	\$5,315.00	60.94	\$8,763.00	12,250.86	12,459.44
Black Coulee	0.00	\$0.00	0.00	\$0.00	0.00	\$0.00	0.00	\$0.00	1,308.88	1,308.88
Bowdoin	0.00	\$0.00	0.00	\$0.00	0.00	\$0.00	0.00	\$0.00	15,551.97	15,551.97
Charles M. Russell	0.00	\$0.00	0.00	\$0.00	0.00	\$0.00	0.00	\$0.00	916,106.79	916,106.79
Creedman Coulee	0.00	\$0.00	0.00	\$0.00	0.00	\$0.00	0.00	\$0.00	2,728.00	2,728.00
FSA Interest MT ***	0.00	\$0.00	0.00	\$0.00	0.00	\$0.00	0.00	\$0.00	2,065.12	2,065.12
Hailstone	0.00	\$0.00	0.00	\$0.00	0.00	\$0.00	0.00	\$0.00	920.00	920.00
Halfbreed Lake	0.00	\$0.00	0.00	\$1,512.00	3,279.02	\$291,000.00	640.00	\$31,938.20	399.22	4,318.24
Hewitt Lake	0.00	\$0.00	0.00	\$0.00	0.00	\$0.00	0.00	\$0.00	1,360.92	1,360.92
Lake Mason	0.00	\$0.00	0.00	\$0.00	4,100.45	\$0.00	0.00	\$0.00	12,714.07	16,814.52
Lake Thibadeau	0.00	\$0.00	0.00	\$0.00	0.00	\$0.00	0.00	\$0.00	3,868.48	3,868.48
Lamesteer	0.00	\$0.00	0.00	\$0.00	0.00	\$0.00	0.00	\$0.00	800.00	800.00
Lee Metcalf	0.00	\$0.00	0.00	\$0.00	2,696.29	\$799,680.00	0.00	\$0.00	103.23	2,799.52

Table 1. National Migratory Bird Refuges

State and Unit	FISCAL YEAR MBCF ACQUISITION				CUMULATIVE TOTALS AT END OF FISCAL YEAR					
	Purchased		Easement or Lease		MBCF				All Other Acres	Total Acres
	Acres	Cost	Acres	Cost	Purchased		Easement or Lease			
				Acres	Cost	Acres	Cost			
Montana (Continued)										
Lost Trail	0.00	\$0.00	0.00	\$261.66	4,693.20	\$1,728,205.00	1,029.04	\$4,128.48	3,182.87	8,905.11
Medicine Lake	0.00	\$0.00	0.00	\$0.00	2,513.26	\$25,460.00	0.00	\$0.00	29,020.45	31,533.71
Red Rock Lakes	0.00	\$0.00	0.00	\$11,145.47	3,540.28	\$4,167,191.00	3,266.32	\$46,979.14	69,558.24	76,364.84
Swan River	0.00	\$0.00	0.00	\$0.00	1,568.81	\$901,645.00	0.00	\$0.00	0.00	1,568.81
UI Bend	0.00	\$0.00	0.00	\$0.00	9,688.19	\$577,280.00	0.00	\$0.00	46,401.37	56,089.56
War Horse	0.00	\$0.00	0.00	\$0.00	0.00	\$0.00	0.00	\$0.00	3,392.87	3,392.87
State Total	18	\$0.00	\$0.00	\$12,919.13	32,227.14	\$8,495,776.00	4,996.30	\$91,808.82	1,121,733.34	1,158,956.78
Nebraska										
Crescent Lake	0.00	\$0.00	0.00	\$0.00	3,710.00	\$31,048.00	31.49	\$3,189.00	42,253.86	45,995.35
Desoto (19)*	0.00	\$0.00	0.00	\$0.00	3,660.32	\$591,507.20	0.00	\$0.00	663.88	4,324.20
FSA Interest NE ***	0.00	\$0.00	0.00	\$0.00	0.00	\$0.00	0.00	\$0.00	3,070.18	3,070.18
Valentine	0.00	\$0.00	0.00	\$0.00	6,158.34	\$62,747.00	0.00	\$0.00	66,939.75	73,098.09
State Total	2	\$0.00	\$0.00	\$0.00	13,528.66	\$685,302.20	31.49	\$3,189.00	112,927.67	126,487.82
Nevada										
Anaho Island	0.00	\$0.00	0.00	\$0.00	0.00	\$0.00	0.00	\$0.00	247.73	247.73
Desert	0.00	\$0.00	0.00	\$0.00	320.00	\$5,600.00	0.00	\$0.00	1,614,993.49	1,615,313.49
Fallon	0.00	\$0.00	0.00	\$0.00	0.00	\$0.00	0.00	\$0.00	17,901.94	17,901.94
Pahranagat	0.00	\$0.00	0.00	\$0.00	3,915.60	\$500,000.00	0.75	\$0.00	1,466.39	5,382.74
Ruby Lake	0.00	\$0.00	0.00	\$0.00	29,945.73	\$208,437.25	0.00	\$0.00	9,980.37	39,926.10
Sheldon (4)	0.00	\$0.00	0.00	\$0.00	23,143.67	\$2,002.00	0.00	\$0.00	549,752.48	572,896.15
Stillwater	0.00	\$0.00	0.00	\$0.00	0.00	\$0.00	0.00	\$0.00	88,845.68	88,845.68
State Total	7	\$0.00	\$0.00	\$0.00	57,325.00	\$716,039.25	0.75	\$0.00	2,283,188.08	2,340,513.83
New Hampshire										
Silvio O. Conte (42)*	672.00	\$635,000.00	0.00	\$0.00	2,610.00	\$2,670,645.50	3.40	\$2,054.50	4,767.63	7,381.03
Umbagog (37)	1,109.64	\$1,095,000.00	0.00	\$0.00	8,531.39	\$4,435,246.58	0.00	\$1.00	11,354.53	19,885.92
State Total	1	1,781.64	\$1,730,000.00	\$0.00	11,141.39	\$7,105,892.08	3.40	\$2,055.50	16,122.16	27,266.95
New Jersey										
Cape May	0.00	\$0.00	0.00	\$0.00	4,564.56	\$5,038,193.00	0.00	\$0.00	7,496.66	12,061.22
Edwin B. Forsythe	254.70	\$500,500.00	0.00	\$0.00	40,002.73	\$17,903,592.97	0.00	\$1,300.00	7,311.94	47,314.67
Great Swamp	0.00	\$0.00	0.00	\$0.00	2,808.67	\$3,577,691.05	0.00	\$0.00	4,964.45	7,773.12
Supawna Meadows	0.00	\$0.00	0.00	\$0.00	2,526.83	\$968,744.00	0.00	\$0.00	746.52	3,273.35
Wallkill River (39)*	41.05	\$123,000.00	2.08	\$1.00	1,382.51	\$3,001,912.50	2.08	\$1.00	4,012.37	5,396.96
State Total	4	295.75	\$623,500.00	2.08	\$1.00	51,285.30	\$30,490,133.52	2.08	\$1,301.00	24,531.94
New Mexico										
Bitter Lake	0.00	\$0.00	0.00	\$0.00	10,753.66	\$52,304.00	0.00	\$0.00	13,854.98	24,608.64
Bosque Del Apache	0.00	\$0.00	0.00	\$0.00	56,850.31	\$125,311.00	0.00	\$0.00	480.87	57,331.18
Las Vegas	0.00	\$0.00	0.00	\$0.00	8,672.08	\$2,121,150.00	0.00	\$0.00	0.00	8,672.08
Maxwell	0.00	\$0.00	0.00	\$0.00	2,791.69	\$423,370.79	0.00	\$0.00	906.90	3,698.59
State Total	4	\$0.00	\$0.00	\$0.00	79,067.74	\$2,722,135.79	0.00	\$0.00	15,242.75	94,310.49
New York										
Amagansett	0.00	\$0.00	0.00	\$0.00	0.00	\$0.00	0.00	\$0.00	35.84	35.84
Conscience Point	0.00	\$0.00	0.00	\$0.00	0.00	\$0.00	0.00	\$0.00	60.40	60.40
Elizabeth A. Morton	0.00	\$0.00	0.00	\$0.00	0.00	\$0.00	0.00	\$0.00	187.19	187.19
FSA Interest NY ***	0.00	\$0.00	0.00	\$0.00	0.00	\$0.00	0.00	\$0.00	2,714.10	2,714.10
Iroquois	0.00	\$0.00	0.00	\$0.00	10,757.81	\$1,279,615.46	0.00	\$0.00	70.25	10,828.06
Montezuma	0.00	\$0.00	0.00	\$0.00	7,937.78	\$2,595,718.56	0.00	\$0.00	1,221.32	9,159.10
Oyster Bay	0.00	\$0.00	0.00	\$0.00	0.00	\$0.00	0.00	\$0.00	3,204.08	3,204.08
Seatuck	0.00	\$0.00	0.00	\$0.00	0.00	\$0.00	0.00	\$0.00	209.23	209.23
Shawangunk Grasslands	0.00	\$0.00	0.00	\$0.00	0.00	\$0.00	0.00	\$0.00	566.53	566.53
Target Rock	0.00	\$0.00	0.00	\$0.00	0.00	\$0.00	0.00	\$0.00	80.09	80.09
Wallkill River (40)	0.00	\$0.00	0.00	\$0.00	0.00	\$0.00	0.00	\$0.00	307.69	307.69
Wertheim	0.00	\$0.00	0.00	\$0.00	188.70	\$193,217.80	0.00	\$0.00	2,499.09	2,687.79
State Total	11	\$0.00	\$0.00	\$0.00	18,884.29	\$4,068,551.82	0.00	\$0.00	11,155.81	30,040.10
North Carolina										
Cedar Island	0.00	\$0.00	0.00	\$0.00	12,498.77	\$389,171.21	0.00	\$0.00	1,997.55	14,496.32
Currituck	0.00	\$0.00	0.00	\$0.00	3,762.23	\$8,689,434.00	225.76	\$120,000.00	4,331.70	8,319.69
FSA Interest NC ***	0.00	\$0.00	0.00	\$0.00	0.00	\$0.00	0.00	\$0.00	6,621.05	6,621.05
Great Dismal Swamp (16)	0.00	\$0.00	0.00	\$0.00	2,790.60	\$3,155,540.00	0.00	\$1.00	24,811.80	27,602.40
Mackay Island (16)	0.00	\$0.00	0.00	\$0.00	6,370.24	\$1,172,606.95	0.00	\$0.00	1,015.56	7,385.80

Table 1. National Migratory Bird Refuges

State and Unit	FISCAL YEAR MBCF ACQUISITION				CUMULATIVE TOTALS AT END OF FISCAL YEAR					
	Purchased		Easement or Lease		MBCF				All Other Acres	Total Acres
	Acres	Cost	Acres	Cost	Purchased		Easement or Lease			
				Acres	Cost	Acres	Cost			
North Carolina (Continued)										
Mattamuskeet	0.00	\$0.00	0.00	\$0.00	252.04	\$1,285.35	0.00	\$0.00	49,921.89	50,173.93
Pea Island	0.00	\$0.00	0.00	\$0.00	5,787.97	\$40,401.86	0.00	\$0.00	46.23	5,834.20
Pee Dee	0.00	\$0.00	0.00	\$0.00	8,438.94	\$2,561,851.76	0.00	\$0.00	27.66	8,466.60
Pocosin Lakes	0.00	\$0.00	0.00	\$0.00	12,350.35	\$1,682,157.99	0.00	\$0.00	97,756.29	110,106.64
Roanoke River	0.00	\$0.00	0.00	\$0.00	15,692.43	\$8,338,258.00	0.00	\$0.00	4,870.00	20,562.43
Swanquarter	0.00	\$0.00	0.00	\$0.00	15,492.76	\$60,920.93	0.00	\$0.00	918.33	16,411.09
State Total	10	\$0.00	\$0.00	\$0.00	83,436.33	\$26,091,628.05	225.76	\$120,001.00	192,318.06	275,980.15
North Dakota										
Appert Lake	0.00	\$0.00	0.00	\$0.00	0.00	\$0.00	0.00	\$0.00	907.75	907.75
Ardoch	0.00	\$0.00	0.00	\$0.00	288.13	\$2,739.00	0.00	\$0.00	2,408.00	2,696.13
Arrowwood	0.00	\$0.00	0.00	\$0.00	2,097.51	\$46,906.58	0.00	\$0.00	13,845.35	15,942.86
Audubon	0.00	\$0.00	0.00	\$0.00	0.00	\$0.00	0.00	\$0.00	14,739.19	14,739.19
Bone Hill	0.00	\$0.00	0.00	\$0.00	0.00	\$0.00	0.00	\$0.00	640.00	640.00
Brumba	0.00	\$0.00	0.00	\$0.00	0.00	\$0.00	0.00	\$0.00	1,977.48	1,977.48
Buffalo Lake	0.00	\$0.00	0.00	\$0.00	0.00	\$0.00	0.00	\$0.00	1,563.72	1,563.72
Camp Lake	0.00	\$0.00	0.00	\$0.00	0.00	\$0.00	0.00	\$0.00	584.70	584.70
Canfield Lake	0.00	\$0.00	0.00	\$0.00	3.10	\$100.00	0.00	\$0.00	310.13	313.23
Chase Lake	0.00	\$0.00	0.00	\$0.00	4,449.47	\$25,611.00	0.00	\$0.00	0.00	4,449.47
Cottonwood Lake	0.00	\$0.00	0.00	\$0.00	0.00	\$0.00	0.00	\$0.00	1,013.47	1,013.47
Dakota Lake	0.00	\$0.00	0.00	\$0.00	0.00	\$0.00	0.00	\$0.00	2,799.78	2,799.78
Des Lacs	0.00	\$0.00	0.00	\$0.00	631.63	\$6,893.60	2.70	\$0.00	18,912.81	19,547.14
Florence Lake	0.00	\$0.00	0.00	\$0.00	1,468.40	\$31,485.00	0.00	\$0.00	419.80	1,888.20
FSA Interest ND	***	\$0.00	0.00	\$0.00	0.00	\$0.00	0.00	\$0.00	6,936.40	6,936.40
Half-Way Lake	0.00	\$0.00	0.00	\$0.00	0.00	\$0.00	160.00	\$0.00	0.00	160.00
Hiddenwood	0.00	\$0.00	0.00	\$0.00	0.00	\$0.00	568.35	\$0.00	0.00	568.35
Hobart Lake	0.00	\$0.00	0.00	\$0.00	236.49	\$5,165.00	0.00	\$0.00	1,840.61	2,077.10
Hutchinson Lake	0.00	\$0.00	0.00	\$0.00	0.00	\$0.00	0.00	\$0.00	478.90	478.90
J. Clark Salyer	0.00	\$0.00	0.00	\$0.00	21,649.95	\$306,352.60	50.52	\$0.00	37,675.93	59,376.40
Johnson Lake	0.00	\$0.00	0.00	\$0.00	0.00	\$0.00	0.00	\$0.00	2,007.91	2,007.91
Kellys Slough	0.00	\$0.00	0.00	\$0.00	0.00	\$0.00	0.00	\$0.00	1,269.50	1,269.50
Lake Alice	0.00	\$0.00	0.00	\$0.00	8,027.86	\$2,067,184.00	8.00	\$0.00	4,059.68	12,095.54
Lake George	0.00	\$0.00	0.00	\$0.00	0.00	\$0.00	0.00	\$0.00	3,118.81	3,118.81
Lake Ilo	0.00	\$0.00	0.00	\$0.00	3,178.30	\$78,582.98	0.00	\$0.00	854.82	4,033.12
Lake Nettie	0.00	\$0.00	0.00	\$0.00	2,420.60	\$148,245.00	0.00	\$0.00	634.30	3,054.90
Lake Otis	0.00	\$0.00	0.00	\$0.00	0.00	\$0.00	0.00	\$0.00	320.00	320.00
Lake Patricia	0.00	\$0.00	0.00	\$0.00	0.00	\$0.00	0.00	\$0.00	800.23	800.23
Lake Zahl	0.00	\$0.00	0.00	\$0.00	3,178.98	\$53,275.00	0.00	\$0.00	644.21	3,823.19
Lambs Lake	0.00	\$0.00	0.00	\$0.00	0.00	\$0.00	0.00	\$0.00	1,206.67	1,206.67
Little Goose	0.00	\$0.00	0.00	\$0.00	0.00	\$0.00	0.00	\$0.00	288.41	288.41
Long Lake	0.00	\$0.00	0.00	\$0.00	12,578.82	\$77,180.00	217.35	\$10.00	9,702.33	22,498.50
Lords Lake	0.00	\$0.00	0.00	\$0.00	0.00	\$0.00	0.00	\$0.00	1,915.29	1,915.29
Lost Lake	0.00	\$0.00	0.00	\$0.00	0.00	\$0.00	0.00	\$0.00	960.21	960.21
Lostwood	0.00	\$0.00	0.00	\$0.00	3,148.01	\$24,553.00	0.00	\$0.00	24,440.57	27,588.58
Maple River	0.00	\$0.00	0.00	\$0.00	0.00	\$0.00	0.00	\$0.00	712.00	712.00
Mclean	0.00	\$0.00	0.00	\$0.00	344.00	\$12,516.00	0.00	\$0.00	416.00	760.00
Pleasant Lake	0.00	\$0.00	0.00	\$0.00	0.00	\$0.00	0.00	\$0.00	897.80	897.80
Pretty Rock	0.00	\$0.00	0.00	\$0.00	0.00	\$0.00	0.00	\$0.00	800.00	800.00
Rabb Lake	0.00	\$0.00	0.00	\$0.00	0.00	\$0.00	0.00	\$0.00	260.80	260.80
Rock Lake	0.00	\$0.00	0.00	\$0.00	0.00	\$0.00	0.00	\$0.00	5,665.96	5,665.96
Rose Lake	0.00	\$0.00	0.00	\$0.00	0.00	\$0.00	0.00	\$0.00	836.30	836.30
School Section Lake	0.00	\$0.00	0.00	\$0.00	0.00	\$0.00	0.00	\$0.00	297.30	297.30
Shell Lake	0.00	\$0.00	0.00	\$0.00	710.20	\$17,902.00	0.00	\$0.00	1,124.90	1,835.10
Sheyenne Lake	0.00	\$0.00	0.00	\$0.00	0.00	\$0.00	0.00	\$0.00	797.30	797.30
Sibley Lake	0.00	\$0.00	0.00	\$0.00	0.00	\$0.00	0.00	\$0.00	1,077.40	1,077.40
Silver Lake	0.00	\$0.00	0.00	\$0.00	0.00	\$0.00	0.00	\$0.00	3,347.64	3,347.64
Slade	0.00	\$0.00	0.00	\$0.00	0.00	\$0.00	0.00	\$0.00	3,000.20	3,000.20
Snyder Lake	0.00	\$0.00	0.00	\$0.00	0.00	\$0.00	0.00	\$0.00	1,550.18	1,550.18
Springwater	0.00	\$0.00	0.00	\$0.00	0.00	\$0.00	0.00	\$0.00	640.00	640.00
Stewart Lake	0.00	\$0.00	0.00	\$0.00	0.00	\$0.00	0.00	\$0.00	2,230.40	2,230.40
Stoney Slough	0.00	\$0.00	0.00	\$0.00	0.00	\$0.00	0.00	\$0.00	880.00	880.00

Table 1. National Migratory Bird Refuges

State and Unit	FISCAL YEAR MBCF ACQUISITION				CUMULATIVE TOTALS AT END OF FISCAL YEAR					
	Purchased		Easement or Lease		MBCF				All Other Acres	Total Acres
	Acres	Cost	Acres	Cost	Purchased		Easement or Lease			
				Acres	Cost	Acres	Cost			
North Dakota (Continued)										
Storm Lake	0.00	\$0.00	0.00	\$0.00	0.00	\$0.00	0.00	\$0.00	685.90	685.90
Stump Lake	0.00	\$0.00	0.00	\$0.00	0.00	\$0.00	0.00	\$0.00	27.39	27.39
Sunburst Lake	0.00	\$0.00	0.00	\$0.00	0.00	\$0.00	0.00	\$0.00	327.51	327.51
Tewaukon	0.00	\$0.00	0.00	\$0.00	6,790.23	\$460,122.00	0.00	\$0.00	1,573.39	8,363.62
Tomahawk	0.00	\$0.00	0.00	\$0.00	0.00	\$0.00	0.00	\$0.00	440.00	440.00
Upper Souris	0.00	\$0.00	0.00	\$0.00	2,939.17	\$41,220.00	3.76	\$0.00	29,359.32	32,302.25
White Lake	0.00	\$0.00	0.00	\$0.00	1,040.00	\$28,800.00	0.00	\$0.00	0.00	1,040.00
Wild Rice Lake	0.00	\$0.00	0.00	\$0.00	0.00	\$0.00	0.00	\$0.00	778.80	778.80
Willow Lake	0.00	\$0.00	0.00	\$0.00	0.00	\$0.00	0.00	\$0.00	2,620.38	2,620.38
Wintering River	0.00	\$0.00	0.00	\$0.00	0.00	\$0.00	0.00	\$0.00	239.26	239.26
Wood Lake	0.00	\$0.00	0.00	\$0.00	0.00	\$0.00	0.00	\$0.00	280.00	280.00
State Total	62	\$0.00	\$0.00	\$0.00	75,180.85	\$3,434,832.76	1,010.68	\$10.00	220,143.09	296,334.62
Ohio										
Cedar Point	0.00	\$0.00	0.00	\$0.00	0.00	\$0.00	0.00	\$0.00	2,449.77	2,449.77
Ottawa	0.00	\$0.00	0.00	\$0.00	5,172.11	\$2,572,893.55	590.80	\$2.00	940.98	6,703.89
West Sister Island	0.00	\$0.00	0.00	\$0.00	0.00	\$0.00	0.00	\$0.00	80.13	80.13
State Total	3	\$0.00	\$0.00	\$0.00	5,172.11	\$2,572,893.55	590.80	\$2.00	3,470.88	9,233.79
Oklahoma										
Deep Fork	0.00	\$0.00	0.00	\$0.00	1,571.50	\$421,000.00	0.00	\$0.00	8,096.78	9,668.28
Little River	0.00	\$0.00	0.00	\$0.00	12,262.16	\$9,881,540.94	0.00	\$0.00	1,397.88	13,660.04
Optima	0.00	\$0.00	0.00	\$0.00	0.00	\$0.00	0.00	\$0.00	4,332.81	4,332.81
Salt Plains	0.00	\$0.00	0.00	\$0.00	1,117.39	\$50,837.00	0.00	\$0.00	31,079.92	32,197.31
Sequoyah	0.00	\$0.00	0.00	\$0.00	0.00	\$0.00	0.00	\$0.00	20,800.00	20,800.00
Tishomingo	0.00	\$0.00	0.00	\$0.00	0.00	\$0.00	0.00	\$0.00	16,464.18	16,464.18
Washita	0.00	\$0.00	0.00	\$0.00	0.00	\$0.00	0.00	\$1.00	8,075.37	8,075.37
State Total	7	\$0.00	\$0.00	\$0.00	14,951.05	\$10,353,377.94	0.00	\$1.00	90,246.94	105,197.99
Oregon										
Ankeny	0.00	\$0.00	0.00	\$0.00	2,796.33	\$893,600.00	0.00	\$0.00	0.00	2,796.33
Baskett Slough	0.00	\$0.00	0.00	\$0.00	2,492.33	\$941,985.00	0.00	\$0.00	0.00	2,492.33
Cape Meares	0.00	\$0.00	0.00	\$0.00	0.00	\$0.00	0.00	\$0.00	138.51	138.51
Cold Springs	0.00	\$0.00	0.00	\$0.00	386.88	\$2,760.00	0.00	\$0.00	2,729.95	3,116.83
Deer Flat (21)*	0.00	\$0.00	0.00	\$0.00	0.00	\$0.00	0.00	\$0.00	187.94	187.94
FSA Interest OR ***	0.00	\$0.00	0.00	\$0.00	0.00	\$0.00	0.00	\$0.00	1,562.56	1,562.56
Hart Mountain	0.00	\$0.00	0.00	\$0.00	54,837.26	\$216,114.58	0.00	\$0.00	216,029.28	270,866.54
Klamath Marsh	0.00	\$0.00	0.00	\$0.00	18,288.86	\$2,070,694.00	0.00	\$0.00	22,756.32	41,045.18
Lewis And Clark	0.00	\$0.00	0.00	\$0.00	2,850.63	\$469,250.00	0.00	\$0.00	9,316.22	12,166.85
Lower Klamath (2)*	0.00	\$0.00	0.00	\$0.00	0.00	\$0.00	0.00	\$0.00	6,618.13	6,618.13
Malheur	0.00	\$0.00	0.00	\$0.00	47,953.58	\$2,461,939.35	0.00	\$0.00	139,173.36	187,126.94
Nestucca Bay	20.81	\$105,000.00	0.00	\$0.00	20.81	\$105,000.00	0.00	\$0.00	979.06	999.87
Oregon Islands	0.00	\$0.00	0.00	\$0.00	0.00	\$0.00	0.00	\$0.00	748.55	748.55
Sheldon (15)*	0.00	\$0.00	0.00	\$0.00	627.48	\$4,079.00	0.00	\$0.00	0.00	627.48
Tualatin River	32.00	\$275,000.00	0.00	\$0.00	453.31	\$2,542,300.00	0.80	\$4,375.00	1,732.03	2,186.14
Umatilla (26)	0.00	\$0.00	0.00	\$0.00	0.00	\$0.00	0.00	\$0.00	8,907.37	8,907.37
Upper Klamath	0.00	\$0.00	0.00	\$0.00	4,146.10	\$123,476.00	0.00	\$0.00	20,836.58	24,982.68
William L. Finley	0.00	\$0.00	0.00	\$0.00	5,697.06	\$2,600,006.00	8.94	\$6,797.00	0.00	5,706.00
State Total	13	\$275,000.00	\$0.00	\$0.00	140,550.63	\$12,431,203.93	9.74	\$11,172.00	431,715.86	572,276.23
Pennsylvania										
Erie	0.00	\$0.00	0.00	\$0.00	7,962.81	\$911,480.12	0.00	\$0.00	837.42	8,800.23
John Heinz	0.00	\$0.00	0.00	\$0.00	80.33	\$20,966.00	0.00	\$0.00	912.84	993.17
State Total	2	\$0.00	\$0.00	\$0.00	8,043.14	\$932,446.12	0.00	\$0.00	1,750.26	9,793.40
Rhode Island										
Block Island	0.00	\$0.00	0.00	\$0.00	0.00	\$0.00	0.00	\$0.00	132.72	132.72
John H. Chafee	0.00	\$0.00	0.00	\$0.00	0.00	\$0.00	0.00	\$0.00	549.35	549.35
Ninigret	0.00	\$0.00	0.00	\$0.00	0.00	\$0.00	0.00	\$0.00	868.40	868.40
Sachuest Point	0.00	\$0.00	0.00	\$0.00	0.00	\$0.00	0.00	\$0.00	241.90	241.90
Trustom Pond	0.00	\$0.00	0.00	\$0.00	0.00	\$0.00	0.00	\$0.00	777.30	777.30
State Total	5	\$0.00	\$0.00	\$0.00	0.00	\$0.00	0.00	\$0.00	2,569.67	2,569.67
South Carolina										
Cape Romain	0.00	\$0.00	0.00	\$0.00	22,237.29	\$17,218.18	0.00	\$0.00	44,049.89	66,287.18
Carolina Sandhills	0.00	\$0.00	0.00	\$0.00	580.20	\$38,352.75	0.00	\$0.00	45,222.09	45,802.29

Table 1. National Migratory Bird Refuges

State and Unit	FISCAL YEAR MBCF ACQUISITION				CUMULATIVE TOTALS AT END OF FISCAL YEAR						
	Purchased		Easement or Lease		MBCF				All Other Acres	Total Acres	
	Acres	Cost	Acres	Cost	Purchased		Easement or Lease				
				Acres	Cost	Acres	Cost				
South Carolina (Continued)											
FSA Interest SC	***	0.00	\$0.00	0.00	\$0.00	0.00	\$0.00	0.00	\$0.00	1,430.04	1,430.04
Pinckney Island		0.00	\$0.00	0.00	\$0.00	0.00	\$0.00	0.00	\$0.00	4,052.70	4,052.70
Santee		0.00	\$0.00	0.00	\$0.00	4,322.43	\$549,953.57	0.00	\$0.00	8,193.98	12,516.41
Savannah	(1)*	0.00	\$0.00	0.00	\$0.00	7,991.40	\$1,554,443.30	0.00	\$0.00	7,019.97	15,011.37
Tybee		0.00	\$0.00	0.00	\$0.00	0.00	\$0.00	0.00	\$0.00	100.00	100.00
Waccamaw		0.00	\$0.00	0.00	\$0.00	1,292.41	\$1,400,000.00	0.00	\$0.00	21,627.47	22,919.88
State Total	6	0.00	\$0.00	0.00	\$0.00	36,423.73	\$3,559,967.80	0.00	\$0.00	131,696.14	168,119.87
South Dakota											
Bear Butte		0.00	\$0.00	0.00	\$0.00	0.00	\$0.00	0.00	\$0.00	374.20	374.20
Dakota Grassland	(49)	0.00	\$0.00	2,262.71	\$1,297,075.00	0.00	\$0.00	2,262.71	\$1,297,075.00	0.00	2,262.71
FSA Interest SD	***	0.00	\$0.00	0.00	\$0.00	0.00	\$0.00	0.00	\$0.00	151.00	151.00
Lacreek		0.00	\$0.00	0.00	\$0.00	9,379.75	\$768,491.00	80.00	\$35,933.00	7,395.58	16,855.33
Lake Andes		0.00	\$0.00	0.00	\$0.00	617.64	\$92,322.00	0.00	\$0.00	5,021.79	5,639.43
Sand Lake		0.00	\$0.00	0.00	\$0.00	3,917.39	\$90,622.00	0.00	\$0.00	17,902.80	21,820.19
Waubay		0.00	\$0.00	0.00	\$0.00	683.77	\$23,838.00	90.53	\$0.00	3,965.92	4,740.22
State Total	6	0.00	\$0.00	2,262.71	\$1,297,075.00	14,598.55	\$975,273.00	2,433.24	\$1,333,008.00	34,811.29	51,843.08
Tennessee											
Chickasaw		0.00	\$0.00	0.00	\$0.00	15,356.98	\$17,796,888.72	0.00	\$0.00	10,783.64	26,140.62
Cross Creeks		0.00	\$0.00	0.00	\$0.00	87.64	\$26,200.00	0.00	\$0.00	8,773.85	8,861.49
FSA Interest TN	***	0.00	\$0.00	0.00	\$0.00	0.00	\$0.00	0.00	\$0.00	685.39	685.39
Hatchie		0.00	\$0.00	0.00	\$0.00	11,220.73	\$1,862,329.25	0.00	\$0.00	335.37	11,556.10
Lake Isom		0.00	\$0.00	0.00	\$0.00	344.65	\$27,290.72	0.00	\$0.00	1,513.73	1,858.38
Lower Hatchie		837.86	\$1,910,000.00	0.00	\$0.00	8,313.66	\$11,126,943.00	0.00	\$0.00	4,793.90	13,107.56
Reelfoot	(22)*	0.00	\$0.00	0.00	\$0.00	496.53	\$109,531.78	0.00	\$0.00	7,914.17	8,410.70
Tennessee		0.00	\$0.00	0.00	\$0.00	430.45	\$72,151.10	0.00	\$0.00	50,929.01	51,359.46
State Total	6	837.86	\$1,910,000.00	0.00	\$0.00	36,250.64	\$31,021,334.57	0.00	\$0.00	85,729.06	121,979.70
Texas											
Anahuac		0.00	\$0.00	0.00	\$0.00	29,967.70	\$12,452,064.20	63.09	\$0.00	4,369.18	34,399.97
Aransas		0.00	\$0.00	0.00	\$0.00	49,235.68	\$1,833,531.80	0.00	\$0.00	65,421.37	114,657.05
Big Boggy		0.00	\$0.00	0.00	\$0.00	4,113.41	\$2,374,594.19	258.23	\$58,112.00	154.53	4,526.17
Brazoria		0.00	\$0.00	0.00	\$0.00	42,641.23	\$13,822,482.26	0.00	\$0.00	1,772.65	44,413.88
Buffalo Lake		0.00	\$0.00	0.00	\$0.00	0.00	\$0.00	0.00	\$0.00	7,664.16	7,664.16
FSA Interest TX	***	0.00	\$0.00	0.00	\$0.00	0.00	\$0.00	0.00	\$0.00	2,776.21	2,776.21
Hagerman		0.00	\$0.00	0.00	\$0.00	0.00	\$0.00	0.00	\$0.00	11,319.84	11,319.84
Laguna Atascosa		0.00	\$0.00	0.00	\$0.00	77,309.93	\$12,475,079.19	0.00	\$0.00	12,291.62	89,601.55
Little Sandy		0.00	\$0.00	0.00	\$0.00	0.00	\$0.00	3,802.00	\$0.00	0.00	3,802.00
Lower Rio Grande Valley		0.00	\$0.00	0.00	\$0.00	0.00	\$0.00	0.00	\$0.00	91,635.56	91,635.56
Mcfaddin		0.00	\$0.00	0.00	\$0.00	51,112.55	\$10,956,489.20	7,748.88	\$1,394,170.00	0.00	58,861.43
Moody		0.00	\$0.00	0.00	\$0.00	0.00	\$0.00	3,516.87	\$0.00	0.00	3,516.87
Muleshoe		0.00	\$0.00	0.00	\$0.00	2,154.80	\$25,740.00	0.00	\$0.00	4,294.30	6,449.10
San Bernard		1,362.59	\$894,017.00	0.00	\$0.00	37,832.80	\$22,722,196.97	2.32	\$1.00	9,596.03	47,431.15
Santa Ana		0.00	\$0.00	0.00	\$0.00	1,980.50	\$23,766.00	0.00	\$0.00	107.00	2,087.50
Texas Point		0.00	\$0.00	0.00	\$0.00	8,952.02	\$1,719,000.00	0.00	\$0.00	0.00	8,952.02
Trinity River		160.62	\$160,500.00	0.00	\$0.00	15,122.93	\$12,327,402.99	0.00	\$0.00	9,799.34	24,922.27
State Total	16	1,523.21	\$1,054,517.00	0.00	\$0.00	320,423.55	\$90,732,346.80	15,391.39	\$1,452,283.00	221,201.79	557,016.73
Utah											
Bear River		271.61	\$825,930.00	0.00	\$0.00	26,211.62	\$4,405,049.47	45.76	\$740.00	48,434.12	74,691.50
Fish Springs		0.00	\$0.00	0.00	\$0.00	3,774.82	\$93,325.00	0.00	\$73.00	14,217.42	17,992.24
FSA Interest UT	***	0.00	\$0.00	0.00	\$0.00	0.00	\$0.00	0.00	\$0.00	442.52	442.52
Ouray		0.00	\$0.00	0.00	\$19,820.00	5,014.98	\$461,084.25	3,844.68	\$475,183.15	3,116.90	11,976.56
State Total	3	271.61	\$825,930.00	0.00	\$19,820.00	35,001.42	\$4,959,458.72	3,890.44	\$475,996.15	66,210.96	105,102.82
Vermont											
FSA Interest VT	***	0.00	\$0.00	0.00	\$0.00	0.00	\$0.00	0.00	\$0.00	71.00	71.00
Missisquoi		0.00	\$0.00	0.00	\$0.00	6,324.65	\$582,134.27	0.00	\$0.00	905.04	7,229.69
Silvio O. Conte	(43)	0.00	\$0.00	0.00	\$0.00	17,189.21	\$4,337,574.00	0.00	\$0.00	9,515.80	26,705.01
State Total	2	0.00	\$0.00	0.00	\$0.00	23,513.86	\$4,919,708.27	0.00	\$0.00	10,491.84	34,005.70
Virginia											
Back Bay		0.00	\$0.00	0.00	\$0.00	7,482.09	\$5,160,662.00	0.00	\$0.00	1,675.58	9,157.67
Chincoteague	(23)	0.00	\$0.00	0.00	\$0.00	9,513.02	\$635,403.91	0.00	\$0.00	4,101.66	13,614.68
Eastern Shore Of Virginia		0.00	\$0.00	0.00	\$0.00	522.50	\$1,844,370.00	0.00	\$0.00	920.03	1,442.53

Table 1. National Migratory Bird Refuges

State and Unit	FISCAL YEAR MBCF ACQUISITION				CUMULATIVE TOTALS AT END OF FISCAL YEAR					
	Purchased		Easement or Lease		MBCF				All Other Acres	Total Acres
	Acres	Cost	Acres	Cost	Purchased		Easement or Lease			
				Acres	Cost	Acres	Cost			
Virginia (Continued)										
Fisherman Island	0.00	\$0.00	0.00	\$0.00	825.00	\$1,600,000.00	0.00	\$0.00	1,071.30	1,896.30
FSA Interest VA ***	0.00	\$0.00	0.00	\$0.00	0.00	\$0.00	0.00	\$0.00	133.70	133.70
Great Dismal Swamp (24)*	232.53	\$1,409,000.00	0.00	\$0.00	3,128.95	\$4,233,762.98	0.00	\$0.00	82,196.69	85,325.64
Mackay Island (24)*	0.00	\$0.00	0.00	\$0.00	874.40	\$26,855.75	0.00	\$0.00	3.60	878.00
Martin (23)*	0.00	\$0.00	0.00	\$0.00	0.00	\$0.00	0.00	\$0.00	145.62	145.62
Nansemond	0.00	\$0.00	0.00	\$0.00	0.00	\$0.00	0.00	\$0.00	422.99	422.99
Occoquan Bay	0.00	\$0.00	0.00	\$0.00	0.00	\$0.00	0.00	\$0.00	642.07	642.07
Plum Tree Island	0.00	\$0.00	0.00	\$0.00	0.00	\$0.00	0.00	\$0.00	3,501.68	3,501.68
Presquile	0.00	\$0.00	0.00	\$0.00	0.00	\$0.00	0.00	\$0.00	1,328.92	1,328.92
Rappahannock River Valley	0.00	\$0.00	0.00	\$0.00	1,287.30	\$2,270,200.00	123.40	\$585,001.00	7,307.72	8,718.42
Wallops Island	0.00	\$0.00	0.00	\$0.00	0.00	\$0.00	0.00	\$0.00	373.00	373.00
State Total 10	232.53	\$1,409,000.00	0.00	\$0.00	23,633.26	\$15,771,254.64	123.40	\$585,001.00	103,824.56	127,581.22
Washington										
Columbia	0.00	\$0.00	0.00	\$0.00	11,361.77	\$426,346.04	0.00	\$0.00	17,345.69	28,707.46
Conboy Lake	0.00	\$0.00	0.00	\$0.00	5,964.96	\$2,289,100.00	718.29	\$400,000.00	388.45	7,071.70
FSA Interest WA ***	0.00	\$0.00	0.00	\$0.00	0.00	\$0.00	0.00	\$0.00	1,471.75	1,471.75
Little Pend Oreille	0.00	\$0.00	0.00	\$0.00	4,216.65	\$27,414.00	0.00	\$0.00	38,376.92	42,593.57
Mcnary	0.00	\$0.00	0.00	\$0.00	185.16	\$865.00	0.00	\$0.00	15,372.93	15,558.09
Nisqually	0.00	\$0.00	0.00	\$0.00	2,494.24	\$3,861,990.17	0.55	\$3,000.00	1,905.20	4,399.99
Pierce	0.00	\$0.00	0.00	\$0.00	0.00	\$0.00	0.00	\$0.00	329.38	329.38
Ridgefield	0.00	\$0.00	0.00	\$0.00	4,670.16	\$4,033,600.00	1.74	\$21.00	556.20	5,228.10
Saddle Mountain	0.00	\$0.00	0.00	\$0.00	0.00	\$0.00	0.00	\$0.00	161,485.93	161,485.93
San Juan Islands	0.00	\$0.00	0.00	\$0.00	0.00	\$0.00	0.00	\$0.00	448.50	448.50
Steigerwald Lake	0.00	\$0.00	0.00	\$0.00	50.00	\$500,000.00	0.00	\$0.00	996.02	1,046.02
Toppenish	0.00	\$0.00	0.00	\$0.00	1,762.80	\$599,137.00	1.29	\$0.00	214.75	1,978.84
Turnbull	0.00	\$0.00	0.00	\$0.00	13,909.32	\$507,411.38	0.00	\$0.00	4,707.18	18,616.50
Umatilla (4)*	0.00	\$0.00	0.00	\$0.00	0.00	\$0.00	0.00	\$0.00	14,875.83	14,875.83
Willapa	0.00	\$0.00	0.00	\$0.00	8,616.42	\$5,122,010.74	0.12	\$0.00	7,819.09	16,435.63
State Total 13	0.00	\$0.00	0.00	\$0.00	53,231.48	\$17,367,874.33	721.99	\$403,021.00	266,293.82	320,247.29
West Virginia										
Canaan Valley	0.00	\$0.00	0.00	\$0.00	635.14	\$1,804,884.98	0.00	\$0.00	15,855.45	16,490.59
FSA Interest WV ***	0.00	\$0.00	0.00	\$0.00	0.00	\$0.00	0.00	\$0.00	8.37	8.37
State Total 1	0.00	\$0.00	0.00	\$0.00	635.14	\$1,804,884.98	0.00	\$0.00	15,863.82	16,498.96
Wisconsin										
FSA Interest WI ***	0.00	\$0.00	0.00	\$0.00	0.00	\$0.00	0.00	\$0.00	920.00	920.00
Horicon	0.00	\$0.00	0.00	\$0.00	21,098.37	\$555,238.34	29.00	\$356.00	286.59	21,413.96
Necedah	0.00	\$0.00	0.00	\$0.00	244.92	\$3,194.26	0.00	\$0.00	43,470.94	43,715.86
Trempealeau	0.00	\$0.00	0.00	\$0.00	593.89	\$0.00	0.00	\$0.00	5,605.44	6,199.33
State Total 3	0.00	\$0.00	0.00	\$0.00	21,937.18	\$558,432.60	29.00	\$356.00	50,282.97	72,249.15
Wyoming										
Bamforth	0.00	\$0.00	0.00	\$0.00	964.80	\$6,368.00	0.00	\$0.00	201.23	1,166.03
Cokeville Meadows	0.00	\$0.00	0.00	\$0.00	4,738.89	\$2,101,412.61	320.00	\$36,037.42	4,200.43	9,259.32
FSA Interest WY ***	0.00	\$0.00	0.00	\$0.00	0.00	\$0.00	0.00	\$0.00	3,287.75	3,287.75
Hutton Lake	0.00	\$0.00	0.00	\$0.00	1,815.49	\$7,944.00	0.00	\$0.00	152.85	1,968.34
Pathfinder	0.00	\$0.00	0.00	\$0.00	0.00	\$0.00	0.00	\$0.00	16,806.90	16,806.90
Seedskafee	0.00	\$0.00	0.00	\$0.00	0.00	\$0.00	0.00	\$0.00	27,232.72	27,232.72
State Total 5	0.00	\$0.00	0.00	\$0.00	7,519.18	\$2,115,724.61	320.00	\$36,037.42	51,881.88	59,721.06
Grand Total 370	15,753.15	\$14,787,612.00	3,885.79	\$4,570,701.13	2,359,576.77	\$563,455,294.94	135,065.79	\$89,638,036.00	7,676,537.11	10,171,179.67

(1) Also in Georgia
(2) " " California
(3) " " Arizona
(4) " " Oregon
(5) " " Alabama
(6) " " Florida
(7) " " South Carolina
(8) " " Missouri
(9) " " Iowa, Minnesota and Wisconsin
(10) " " Nebraska
(11) " " Illinois
(12) " " Texas
(13) " " Illinois, Minnesota and Wisconsin
(14) " " Tennessee
(15) " " Nevada
(16) Also in Virginia
(17) " " New Mexico
(18) " " Illinois, Iowa and Wisconsin
(19) " " Iowa
(20) " " South Dakota
(21) " " Idaho
(22) " " Kentucky
(23) " " Maryland
(24) " " North Carolina
(25) " " Illinois, Iowa and Minnesota
(26) " " Washington
(27) " " Mississippi
(28) " " Louisiana
(34) " " West Virginia and Kentucky
(35) " " Pennsylvania and Kentucky
(36) Also in New Hampshire
(37) " " Maine
(38) " " West Virginia and Pennsylvania
(39) " " New York
(40) " " New Jersey
(41) " " New Hampshire and Vermont
(42) " " Massachusetts and Vermont
(43) " " Massachusetts and New Hampshire
* - Counted in another state
** - Denotes interests transferred by the FSA
FSA - Farm Service Agency (Formerly Farmers Home Administration, Department of Agriculture)*

Wetland Management Districts Map

Wetland Management Districts are comprised of counties in which the Service has acquired or is leasing any wetland or pothole area and is managing them as a Waterfowl Production Area (WPA).

The different colors denote the different Districts.

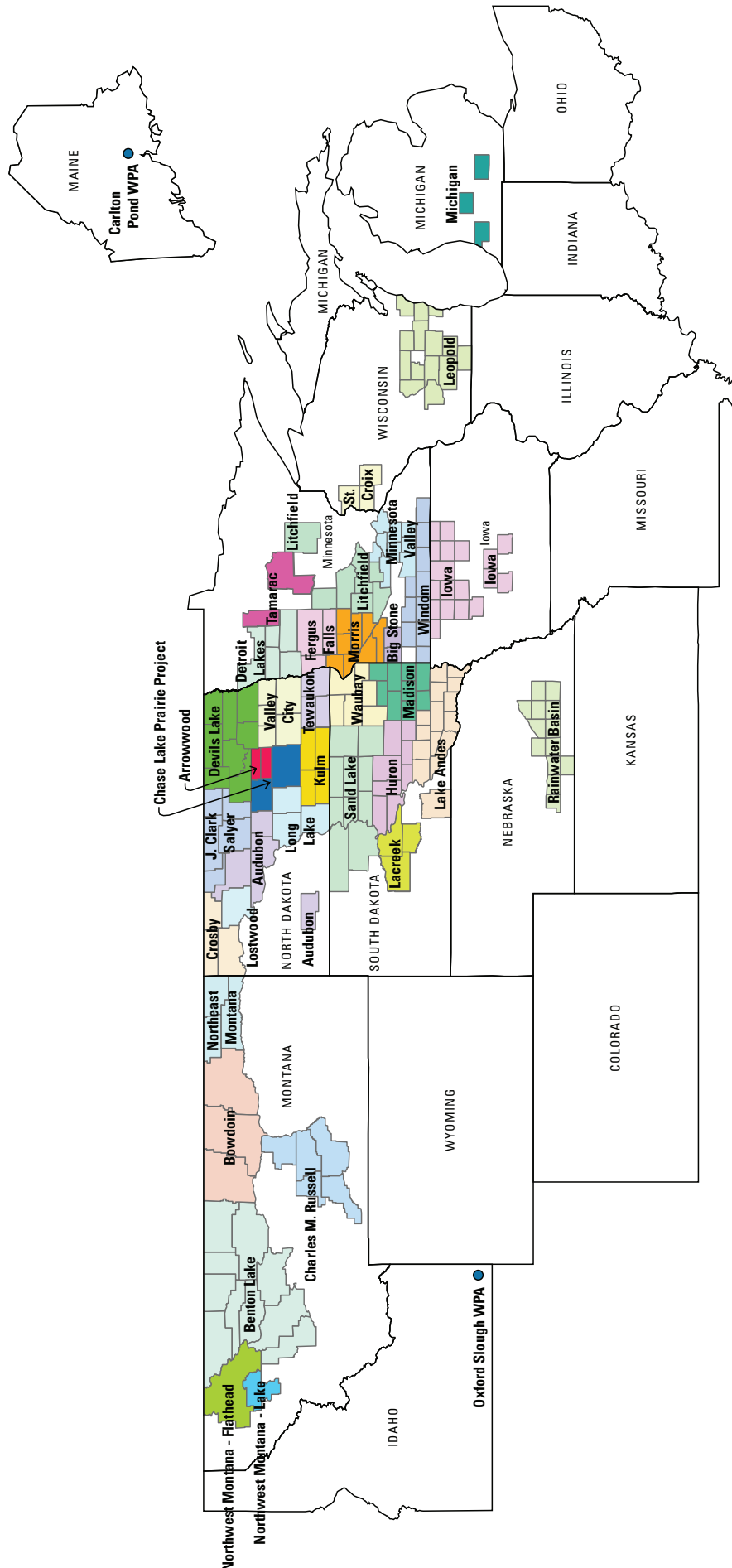


Table 2. Waterfowl Production Areas

State and Unit	FISCAL YEAR MBCF ACQUISITION				CUMULATIVE TOTALS AT END OF FISCAL YEAR					
	Purchased		Easement or Lease		MBCF				All Other Acres	Total Acres
	Acres	Cost	Acres	Cost	Purchased		Easement or Lease			
				Acres	Cost	Acres	Cost			
Idaho										
Oxford Slough WPA	0.00	\$0.00	0.00	\$0.00	1,878.41	\$530,000.00	0.00	\$0.00	0.00	1,878.41
State Total	1	\$0.00	\$0.00	\$0.00	1,878.41	\$530,000.00	0.00	\$0.00	0.00	1,878.41
Iowa										
<i>Iowa WMD</i>										
Boone	0.00	\$0.00	0.00	\$0.00	391.33	\$599,600.00	0.00	\$0.00	0.00	391.33
Buena Vista	0.00	\$0.00	0.00	\$0.00	69.09	\$169,000.00	0.00	\$0.00	0.00	69.09
Cerro Gordo	0.00	\$0.00	0.00	\$0.00	2,720.25	\$3,284,677.82	5.70	\$10,200.00	0.00	2,725.95
Clay	0.00	\$0.00	0.00	\$0.00	920.53	\$1,346,106.85	0.00	\$0.00	0.00	920.53
Dickinson	216.75	\$1,054,800.00	0.00	\$0.00	5,518.61	\$9,408,256.00	84.00	\$37,725.00	635.34	6,237.95
Emmet	0.00	\$0.00	0.00	\$0.00	1,855.29	\$2,417,575.00	16.00	\$40,000.00	249.99	2,121.28
Greene	0.00	\$0.00	0.00	\$0.00	1,133.43	\$3,305,500.00	0.00	\$0.00	0.00	1,133.43
Guthrie	0.00	\$0.00	0.00	\$0.00	302.53	\$609,740.00	0.00	\$0.00	0.00	302.53
Hancock	0.00	\$0.00	0.00	\$0.00	802.70	\$545,480.26	7.00	\$2,250.00	0.00	809.70
Kossuth	0.00	\$0.00	0.00	\$0.00	3,519.86	\$7,995,046.98	23.00	\$28,775.00	0.00	3,542.86
Osceola	0.00	\$0.00	0.00	\$0.00	0.00	\$0.00	37.00	\$17,250.00	4.00	41.00
Palo Alto	57.45	\$219,500.00	0.00	\$0.00	731.81	\$1,180,592.65	176.00	\$222,850.00	58.00	965.81
Pocahontas	0.00	\$0.00	0.00	\$0.00	654.16	\$1,716,400.00	0.00	\$0.00	0.00	654.16
Polk	0.00	\$0.00	0.00	\$0.00	110.00	\$241,500.00	0.00	\$0.00	0.00	110.00
Sac	0.00	\$0.00	0.00	\$0.00	930.45	\$2,493,280.00	0.00	\$0.00	3.97	934.42
Winnebago	0.00	\$0.00	0.00	\$0.00	1,016.95	\$1,138,300.31	105.00	\$54,025.00	0.00	1,121.95
Worth	0.00	\$0.00	0.00	\$0.00	1,491.84	\$1,088,329.87	18.00	\$9,250.00	0.00	1,509.84
Wright	0.00	\$0.00	0.00	\$0.00	1,696.65	\$2,615,725.00	0.00	\$0.00	0.00	1,696.65
<i>WMD Total:</i>	<i>18</i>	<i>274.20</i>	<i>\$1,274,300.00</i>	<i>\$0.00</i>	<i>23,865.48</i>	<i>\$40,155,110.74</i>	<i>471.70</i>	<i>\$422,325.00</i>	<i>951.30</i>	<i>25,288.48</i>
State Total	18	274.20	\$1,274,300.00	\$0.00	23,865.48	\$40,155,110.74	471.70	\$422,325.00	951.30	25,288.48
Maine										
Carlton Pond WPA	0.00	\$0.00	0.00	\$0.00	1,068.21	\$18,277.08	0.00	\$0.00	0.00	1,068.21
State Total	1	\$0.00	\$0.00	\$0.00	1,068.21	\$18,277.08	0.00	\$0.00	0.00	1,068.21
Michigan										
<i>Michigan WMD</i>										
Barry	0.00	\$0.00	0.00	\$0.00	110.00	\$550,000.00	0.00	\$0.00	50.00	160.00
Jackson	0.00	\$0.00	0.00	\$0.00	160.00	\$170,000.00	0.00	\$0.00	138.41	298.41
Van Buren	0.00	\$0.00	0.00	\$0.00	77.08	\$43,600.00	0.00	\$0.00	0.00	77.08
<i>WMD Total:</i>	<i>3</i>	<i>0.00</i>	<i>\$0.00</i>	<i>\$0.00</i>	<i>347.08</i>	<i>\$763,600.00</i>	<i>0.00</i>	<i>\$0.00</i>	<i>188.41</i>	<i>535.49</i>
State Total	3	\$0.00	\$0.00	\$0.00	347.08	\$763,600.00	0.00	\$0.00	188.41	535.49
Minnesota										
<i>Big Stone WMD</i>										
Lincoln	0.00	\$0.00	118.12	\$152,300.00	1,094.01	\$846,200.00	1,781.13	\$1,272,346.04	0.00	2,875.14
Lyon	0.00	\$0.00	30.00	\$61,075.00	1,791.22	\$2,042,220.00	391.20	\$238,105.00	0.00	2,182.42
<i>WMD Total:</i>	<i>2</i>	<i>0.00</i>	<i>148.12</i>	<i>\$213,375.00</i>	<i>2,885.23</i>	<i>\$2,888,420.00</i>	<i>2,172.33</i>	<i>\$1,510,451.04</i>	<i>0.00</i>	<i>5,057.56</i>
<i>Detroit Lakes WMD</i>										
Becker	0.00	\$0.00	0.00	\$0.00	13,213.33	\$5,379,470.56	2,866.93	\$1,375,560.00	6.33	16,086.59
Clay	0.00	\$0.00	17.16	\$18,800.00	10,726.36	\$3,520,045.18	3,596.30	\$907,272.15	21.35	14,344.01
Mahnomen	0.00	\$0.00	364.13	\$239,475.00	6,087.33	\$1,183,558.90	5,168.54	\$419,361.00	957.00	12,212.87
Norman	0.00	\$0.00	0.00	\$0.00	1,120.00	\$400,000.00	0.00	\$0.00	0.00	1,120.00
Polk	0.00	\$0.00	141.71	\$152,125.00	13,052.81	\$2,959,552.86	2,114.40	\$529,236.34	281.68	15,448.89
<i>WMD Total:</i>	<i>5</i>	<i>0.00</i>	<i>523.00</i>	<i>\$410,400.00</i>	<i>44,199.83</i>	<i>\$13,442,627.50</i>	<i>13,746.17</i>	<i>\$3,231,429.49</i>	<i>1,266.36</i>	<i>59,212.36</i>
<i>Fergus Falls WMD</i>										
Douglas	-1.33	\$0.00	0.00	\$0.00	9,608.49	\$2,875,443.20	6,181.79	\$978,805.98	495.95	16,286.23
Grant	0.00	\$0.00	106.50	\$34,575.00	10,498.09	\$3,992,838.12	3,861.39	\$1,425,904.00	174.46	14,533.94
Otter Tail	6.29	\$93,500.00	40.90	\$51,032.00	22,083.86	\$9,327,052.26	16,082.77	\$5,184,512.25	184.29	38,350.92
Wilkin	0.00	\$0.00	0.00	\$0.00	2,433.26	\$900,064.35	309.00	\$93,750.00	75.10	2,817.36
<i>WMD Total:</i>	<i>4</i>	<i>4.96</i>	<i>\$93,500.00</i>	<i>\$85,607.00</i>	<i>44,623.70</i>	<i>\$17,095,397.93</i>	<i>26,434.95</i>	<i>\$7,682,972.23</i>	<i>929.80</i>	<i>71,988.45</i>
<i>Litchfield WMD</i>										
Aitkin	0.00	\$0.00	0.00	\$0.00	69.86	\$28,000.00	0.00	\$0.00	0.00	69.86
Kandiyohi	0.00	\$0.00	0.00	\$0.00	13,884.78	\$6,515,218.93	4,718.73	\$1,098,326.80	51.18	18,654.69
McLeod	0.00	\$0.00	0.00	\$0.00	1,720.79	\$3,646,793.00	996.52	\$984,644.90	0.00	2,717.31

Table 2. Waterfowl Production Areas

State and Unit	FISCAL YEAR MBCF ACQUISITION				CUMULATIVE TOTALS AT END OF FISCAL YEAR						
	Purchased		Easement or Lease		MBCF				All Other Acres	Total Acres	
	Acres	Cost	Acres	Cost	Purchased		Easement or Lease				
				Acres	Cost	Acres	Cost				
Minnesota (Continued)											
<i>Litchfield WMD</i>											
Meeker	0.00	\$0.00	0.00	\$0.00	4,866.29	\$4,157,389.10	2,579.64	\$1,344,142.00	0.61	7,446.54	
Renville	0.00	\$0.00	0.00	\$0.00	1,658.03	\$2,211,040.00	0.00	\$0.00	0.00	1,658.03	
Stearns	0.00	\$0.00	0.00	\$0.00	9,173.36	\$3,023,333.87	1,602.81	\$734,660.70	220.70	10,996.87	
Todd	0.00	\$0.00	0.00	\$0.00	802.85	\$385,672.20	42.58	\$17,480.00	0.00	845.43	
Wright	0.00	\$0.00	0.00	\$0.00	3,070.12	\$6,276,520.90	437.50	\$223,575.00	0.00	3,507.62	
<i>WMD Total:</i>	<i>8</i>	<i>0.00</i>	<i>\$0.00</i>	<i>0.00</i>	<i>35,246.08</i>	<i>\$26,243,968.00</i>	<i>10,377.78</i>	<i>\$4,402,829.40</i>	<i>272.49</i>	<i>45,896.35</i>	
<i>Minnesota Valley WMD</i>											
Blue Earth	0.00	\$0.00	0.00	\$0.00	1,182.77	\$1,657,250.00	735.61	\$1,156,550.00	138.37	2,056.75	
Carver	0.00	\$0.00	0.00	\$0.00	0.00	\$0.00	47.57	\$68,976.50	219.00	266.57	
Dakota	0.00	\$0.00	0.00	\$0.00	73.90	\$201,747.00	0.00	\$0.00	0.05	73.95	
Lesueur	0.00	\$0.00	0.00	\$0.00	356.11	\$525,754.50	242.15	\$222,878.50	62.88	661.14	
Rice	0.00	\$0.00	0.00	\$0.00	315.60	\$438,999.35	580.79	\$1,020,141.25	105.50	1,001.89	
Scott	0.00	\$0.00	0.00	\$0.00	40.00	\$109,200.00	164.21	\$248,001.00	0.00	204.21	
Sibley	0.00	\$0.00	0.00	\$0.00	793.52	\$1,007,681.32	253.25	\$173,190.00	112.36	1,159.13	
Steele	0.00	\$0.00	0.00	\$0.00	650.11	\$833,744.00	0.00	\$0.00	16.59	666.70	
Waseca	0.00	\$0.00	0.00	\$0.00	248.78	\$408,000.00	0.00	\$0.00	0.00	248.78	
<i>WMD Total:</i>	<i>9</i>	<i>0.00</i>	<i>\$0.00</i>	<i>0.00</i>	<i>3,660.79</i>	<i>\$5,182,376.17</i>	<i>2,023.58</i>	<i>\$2,889,737.25</i>	<i>654.75</i>	<i>6,339.12</i>	
<i>Morris WMD</i>											
Big Stone	0.00	\$0.00	646.64	\$785,725.00	11,534.74	\$2,340,945.83	9,850.14	\$3,315,831.16	201.37	21,586.25	
Chippewa	0.00	\$0.00	0.00	\$0.00	244.10	\$127,050.00	115.10	\$105,525.00	0.00	359.20	
Lac Qui Parle	0.00	\$0.00	20.50	\$35,925.00	3,808.79	\$1,002,339.73	1,936.19	\$914,191.00	278.63	6,023.61	
Pope	0.00	\$0.00	710.46	\$785,400.00	13,120.49	\$3,066,945.07	11,280.24	\$3,317,386.70	80.00	24,480.73	
Stevens	0.00	\$0.00	0.00	\$0.00	9,552.66	\$3,463,001.64	1,234.50	\$370,390.00	139.72	10,926.88	
Swift	0.00	\$0.00	0.00	\$0.00	7,635.58	\$1,860,080.17	2,127.67	\$941,019.40	0.00	9,763.25	
Traverse	0.00	\$0.00	0.00	\$0.00	4,105.55	\$1,469,588.63	1,443.61	\$307,665.00	0.00	5,549.16	
Yellow Medicine	0.00	\$0.00	243.38	\$257,250.00	1,082.68	\$879,683.30	1,113.77	\$822,302.40	0.00	2,196.45	
<i>WMD Total:</i>	<i>8</i>	<i>0.00</i>	<i>1,620.98</i>	<i>\$1,864,300.00</i>	<i>51,084.59</i>	<i>\$14,209,634.37</i>	<i>29,101.22</i>	<i>\$10,094,310.66</i>	<i>699.72</i>	<i>80,885.53</i>	
<i>Tamarac WMD</i>											
Cass	0.00	\$0.00	0.00	\$0.00	0.00	\$0.00	43.00	\$6,000.00	0.00	43.00	
Clearwater	0.00	\$0.00	0.00	\$0.00	0.00	\$0.00	864.00	\$129,075.00	0.00	864.00	
<i>WMD Total:</i>	<i>2</i>	<i>0.00</i>	<i>\$0.00</i>	<i>0.00</i>	<i>0.00</i>	<i>\$0.00</i>	<i>907.00</i>	<i>\$135,075.00</i>	<i>0.00</i>	<i>907.00</i>	
<i>Windom WMD</i>											
Cottonwood	0.00	\$0.00	0.00	\$0.00	3,137.96	\$1,681,553.85	233.12	\$132,625.00	0.00	3,371.08	
Faribault	0.00	\$0.00	0.00	\$0.00	830.06	\$800,991.80	129.37	\$110,775.00	0.00	959.43	
Freeborn	0.00	\$0.00	0.00	\$0.00	1,808.27	\$2,373,017.25	147.99	\$161,650.00	133.61	2,089.87	
Jackson	-0.27	\$0.00	40.00	\$95,325.00	4,694.97	\$4,497,146.28	423.09	\$642,725.00	0.00	5,118.06	
Martin	0.00	\$0.00	0.00	\$0.00	333.89	\$645,369.60	271.65	\$287,184.39	0.00	605.54	
Mower	0.00	\$0.00	0.00	\$0.00	0.00	\$0.00	0.00	\$0.00	99.64	99.64	
Murray	0.00	\$0.00	0.00	\$0.00	2,221.94	\$2,691,477.00	31.86	\$57,875.00	0.00	2,253.80	
Nobles	0.00	\$0.00	0.00	\$0.00	521.65	\$580,802.00	26.00	\$15,600.00	0.00	547.65	
Rock	0.00	\$0.00	0.00	\$0.00	0.00	\$0.00	104.79	\$233,950.00	0.00	104.79	
Watonwan	0.00	\$0.00	0.00	\$0.00	56.65	\$31,157.50	168.42	\$112,209.80	0.00	225.07	
<i>WMD Total:</i>	<i>9</i>	<i>-0.27</i>	<i>\$0.00</i>	<i>40.00</i>	<i>13,605.39</i>	<i>\$13,301,515.28</i>	<i>1,536.29</i>	<i>\$1,754,594.19</i>	<i>233.25</i>	<i>15,374.93</i>	
State Total	48	4.69	\$93,500.00	2,479.50	\$2,669,007.00	195,305.61	\$92,363,939.25	86,299.32	\$31,701,399.26	4,056.37	285,661.30
Montana											
<i>Benton Lake WMD</i>											
Cascade	0.00	\$0.00	0.00	\$0.00	727.46	\$299,606.00	78.00	\$15,550.00	193.50	998.96	
Chouteau	0.00	\$0.00	0.00	\$822.36	2,136.13	\$538,543.00	661.00	\$28,671.43	280.00	3,077.13	
Glacier	0.00	\$0.00	0.00	\$0.00	94.20	\$17,898.00	10,146.83	\$953,495.00	96.50	10,337.53	
Hill	0.00	\$0.00	0.00	\$1,332.00	0.00	\$0.00	918.00	\$89,937.00	378.93	1,296.93	
Lewis and Clark	0.00	\$0.00	0.00	\$0.00	0.00	\$0.00	3,317.07	\$1,071,782.00	2,810.88	6,127.95	
Liberty	0.00	\$0.00	0.00	\$0.00	0.00	\$0.00	428.00	\$14,100.00	0.00	428.00	
Pondera	0.00	\$0.00	0.00	\$0.00	640.00	\$93,000.00	8,715.01	\$1,990,000.00	94.96	9,449.97	
Powell	0.00	\$0.00	0.00	\$0.00	1,607.60	\$811,084.00	23,203.06	\$6,650,635.00	4,807.60	29,618.26	
Teton	*	0.00	\$0.00	\$0.00	1,486.05	\$376,253.00	5,413.13	\$241,818.00	921.64	7,820.82	

Table 2. Waterfowl Production Areas

State and Unit	FISCAL YEAR MBCF ACQUISITION				CUMULATIVE TOTALS AT END OF FISCAL YEAR						
	Purchased		Easement or Lease		MBCF				All Other Acres	Total Acres	
	Acres	Cost	Acres	Cost	Purchased		Easement or Lease				
				Acres	Cost	Acres	Cost				
Montana (Continued)											
<i>Benton Lake WMD</i>											
Toole	0.00	\$0.00	0.00	\$0.00	4,610.48	\$1,003,964.00	12,161.09	\$916,245.00	5.28	16,776.85	
<i>WMD Total:</i>	<i>10</i>	<i>0.00</i>	<i>\$0.00</i>	<i>0.00</i>	<i>\$2,154.36</i>	<i>11,301.92</i>	<i>\$3,140,348.00</i>	<i>65,041.19</i>	<i>\$11,972,233.43</i>	<i>9,589.29</i>	<i>85,932.40</i>
<i>Bowdoin WMD</i>											
Blaine	0.00	\$0.00	0.00	\$0.00	2,435.26	\$167,340.00	7,783.93	\$896,395.00	11,783.00	22,002.19	
Phillips *	0.00	\$0.00	1,926.50	\$420,048.24	7,017.35	\$1,476,863.00	36,450.77	\$3,171,771.18	11,451.71	54,919.83	
Valley	0.00	\$0.00	0.00	\$0.00	0.00	\$0.00	201.00	\$28,160.00	0.00	201.00	
<i>WMD Total:</i>	<i>3</i>	<i>0.00</i>	<i>\$0.00</i>	<i>1,926.50</i>	<i>\$420,048.24</i>	<i>9,452.61</i>	<i>\$1,644,203.00</i>	<i>44,435.70</i>	<i>\$4,096,326.18</i>	<i>23,234.71</i>	<i>77,123.02</i>
<i>Charles M. Russell WMD</i>											
Golden Valley	0.00	\$0.00	0.00	\$211.82	760.27	\$76,427.00	160.00	\$6,858.55	0.00	920.27	
Musselshell	0.00	\$0.00	0.00	\$864.00	532.45	\$163,001.00	160.00	\$12,683.00	0.00	692.45	
Petroleum	0.00	\$0.00	0.00	\$0.00	40.00	\$23,800.00	0.00	\$0.00	0.00	40.00	
Stillwater	0.00	\$0.00	0.00	\$0.00	1,828.10	\$207,625.00	0.00	\$0.00	0.38	1,828.48	
Yellowstone	0.00	\$0.00	0.00	\$0.00	486.42	\$55,600.00	0.00	\$0.00	0.00	486.42	
<i>WMD Total:</i>	<i>5</i>	<i>0.00</i>	<i>\$0.00</i>	<i>\$1,075.82</i>	<i>3,647.24</i>	<i>\$526,453.00</i>	<i>320.00</i>	<i>\$19,541.55</i>	<i>0.38</i>	<i>3,967.62</i>	
<i>NE Montana WMD</i>											
Daniels	0.00	\$0.00	0.00	\$0.00	1,080.58	\$97,669.00	472.65	\$41,125.00	546.52	2,099.75	
Roosevelt	0.00	\$0.00	0.00	\$0.00	179.20	\$14,000.00	7,402.42	\$392,500.00	0.00	7,581.62	
Sheridan	0.00	\$0.00	0.00	\$0.00	9,328.01	\$950,442.23	10,030.20	\$699,025.00	2,677.13	22,035.34	
<i>WMD Total:</i>	<i>3</i>	<i>0.00</i>	<i>\$0.00</i>	<i>\$0.00</i>	<i>10,587.79</i>	<i>\$1,062,111.23</i>	<i>17,905.27</i>	<i>\$1,132,650.00</i>	<i>3,223.65</i>	<i>31,716.71</i>	
<i>NW Montana - Flathead WMD</i>											
Flathead	0.00	\$0.00	0.00	\$0.00	4,410.31	\$2,246,518.00	0.00	\$0.00	807.92	5,218.23	
<i>WMD Total:</i>	<i>1</i>	<i>0.00</i>	<i>\$0.00</i>	<i>\$0.00</i>	<i>4,410.31</i>	<i>\$2,246,518.00</i>	<i>0.00</i>	<i>\$0.00</i>	<i>807.92</i>	<i>5,218.23</i>	
<i>NW Montana - Lake WMD</i>											
Lake *	0.00	\$0.00	0.00	\$0.00	1,480.86	\$1,460,555.00	4,131.61	\$3,103,430.00	1,949.14	7,561.61	
<i>WMD Total:</i>	<i>1</i>	<i>0.00</i>	<i>\$0.00</i>	<i>\$0.00</i>	<i>1,480.86</i>	<i>\$1,460,555.00</i>	<i>4,131.61</i>	<i>\$3,103,430.00</i>	<i>1,949.14</i>	<i>7,561.61</i>	
State Total	23	0.00	\$0.00	1,926.50	\$423,278.42	40,880.73	\$10,080,188.23	131,833.77	\$20,324,181.16	38,805.09	211,519.59
Nebraska											
<i>Rainwater Basin WMD</i>											
Adams	0.00	\$0.00	0.00	\$0.00	160.00	\$110,000.00	0.00	\$11,316.89	234.56	394.56	
Clay	0.00	\$0.00	0.88	\$0.00	4,216.27	\$1,622,444.00	0.88	\$0.00	2,833.78	7,050.93	
Fillmore	0.00	\$0.00	0.00	\$0.00	2,937.60	\$1,142,453.00	6.60	\$24.00	638.90	3,583.10	
Franklin	0.00	\$0.00	0.00	\$0.00	1,625.96	\$402,698.00	0.00	\$0.00	157.36	1,783.32	
Gosper	0.00	\$0.00	0.00	\$0.00	1,451.50	\$233,923.00	0.00	\$0.00	0.00	1,451.50	
Hall *	0.00	\$0.00	0.00	\$0.00	328.77	\$433,000.00	0.00	\$0.00	320.70	649.47	
Hamilton *	0.00	\$0.00	0.00	\$0.00	400.00	\$407,450.00	0.00	\$5,899.02	785.17	1,185.17	
Kearney *	0.00	\$0.00	0.00	\$0.00	2,874.43	\$657,681.00	0.00	\$0.00	253.98	3,128.41	
Phelps	0.00	\$0.00	0.00	\$0.00	4,195.14	\$3,052,111.00	0.00	\$0.00	400.00	4,595.14	
Polk FSA **	0.00	\$0.00	0.00	\$0.00	0.00	\$0.00	0.00	\$0.00	140.78	140.78	
Saline FSA **	0.00	\$0.00	0.00	\$0.00	0.00	\$0.00	0.00	\$0.00	104.35	104.35	
Seward	-2.16	\$0.00	0.00	\$0.00	278.67	\$101,746.45	0.00	\$0.00	342.31	620.98	
York *	0.00	\$0.00	0.00	\$0.00	679.20	\$194,429.00	0.00	\$0.00	372.86	1,052.06	
<i>WMD Total:</i>	<i>11</i>	<i>-2.16</i>	<i>\$0.00</i>	<i>0.88</i>	<i>\$0.00</i>	<i>19,147.54</i>	<i>\$8,357,935.45</i>	<i>7.48</i>	<i>\$17,239.91</i>	<i>6,584.75</i>	<i>25,739.77</i>
State Total	11	-2.16	\$0.00	0.88	\$0.00	19,147.54	\$8,357,935.45	7.48	\$17,239.91	6,584.75	25,739.77
North Dakota											
<i>Arrowwood WMD</i>											
Eddy *	0.00	\$0.00	0.00	\$0.00	4,627.21	\$498,001.00	11,810.63	\$314,995.00	446.34	16,884.18	
Foster	0.00	\$0.00	0.00	\$0.00	1,487.07	\$96,568.00	6,946.00	\$239,015.00	0.00	8,433.07	
<i>WMD Total:</i>	<i>2</i>	<i>0.00</i>	<i>\$0.00</i>	<i>\$0.00</i>	<i>6,114.28</i>	<i>\$594,569.00</i>	<i>18,756.63</i>	<i>\$554,010.00</i>	<i>446.34</i>	<i>25,317.25</i>	
<i>Audubon WMD</i>											
Hettinger	0.00	\$0.00	0.00	\$0.00	0.00	\$0.00	0.00	\$0.00	1,202.60	1,202.60	
McLean	0.00	\$0.00	101.00	\$35,075.00	4,219.10	\$536,234.00	23,071.00	\$1,572,990.00	21,821.61	49,111.71	
Sheridan *	0.00	\$0.00	1,030.75	\$239,400.00	7,661.50	\$468,427.00	33,999.34	\$1,783,520.00	30,488.34	72,149.18	
Ward	0.00	\$0.00	0.00	\$0.00	5,868.60	\$489,211.00	38,909.61	\$1,416,814.00	13,218.97	57,997.18	
<i>WMD Total:</i>	<i>4</i>	<i>0.00</i>	<i>\$0.00</i>	<i>1,131.75</i>	<i>\$274,475.00</i>	<i>17,749.20</i>	<i>\$1,493,872.00</i>	<i>95,979.95</i>	<i>\$4,773,324.00</i>	<i>66,731.52</i>	<i>180,460.67</i>

Table 2. Waterfowl Production Areas

State and Unit	FISCAL YEAR MBCF ACQUISITION				CUMULATIVE TOTALS AT END OF FISCAL YEAR					
	Purchased		Easement or Lease		MBCF				All Other Acres	Total Acres
	Acres	Cost	Acres	Cost	Purchased		Easement or Lease			
				Acres	Cost	Acres	Cost			
North Dakota (Continued)										
<i>Chase Lake Prairie Project WMD</i>										
Stutsman *	0.00	\$0.00	323.00	\$77,050.00	23,403.35	\$1,308,016.00	45,717.99	\$1,674,740.00	34,202.20	103,323.54
Wells *	0.00	\$0.00	20.00	\$6,700.00	7,471.61	\$1,153,059.00	13,795.00	\$738,202.00	6,386.02	27,652.63
WMD Total:	2	\$0.00	343.00	\$83,750.00	30,874.96	\$2,461,075.00	59,512.99	\$2,412,942.00	40,588.22	130,976.17
<i>Crosby WMD</i>										
Burke	0.00	\$0.00	107.00	\$28,200.00	3,545.96	\$180,068.00	26,804.00	\$721,580.00	19,826.66	50,176.62
Divide	0.00	\$0.00	170.00	\$26,225.00	9,444.62	\$474,790.00	35,405.09	\$742,460.00	7,913.93	52,763.64
Williams *	0.00	\$0.00	160.00	\$33,500.00	4,163.17	\$278,057.00	8,524.00	\$255,625.00	1,561.32	14,248.49
WMD Total:	3	\$0.00	437.00	\$87,925.00	17,153.75	\$932,915.00	70,733.09	\$1,719,665.00	29,301.91	117,188.75
<i>Devils Lake WMD</i>										
Benson *	0.00	\$0.00	95.79	\$34,325.00	7,296.77	\$607,908.00	35,866.81	\$1,081,655.00	8,423.55	51,587.13
Cavalier *	0.00	\$0.00	206.00	\$81,250.00	10,129.12	\$1,354,471.00	13,920.00	\$403,040.00	1,272.71	25,321.83
Grand Forks	0.00	\$0.00	0.00	\$0.00	6,774.43	\$1,594,422.05	1,118.00	\$46,485.00	641.26	8,533.69
Nelson *	0.00	\$0.00	0.00	\$0.00	3,203.23	\$174,341.00	37,856.70	\$1,336,445.00	2,753.12	43,813.05
Pembina *	0.00	\$0.00	0.00	\$0.00	2,258.56	\$218,677.00	139.00	\$1,900.00	293.90	2,691.46
Ramsey *	0.00	\$0.00	0.00	\$0.00	8,183.04	\$1,144,252.00	29,524.00	\$1,041,285.00	2,038.49	39,745.53
Towner *	0.00	\$0.00	0.00	\$0.00	3,837.02	\$494,146.00	24,361.40	\$508,990.00	6,440.83	34,639.25
Walsh *	0.00	\$0.00	0.00	\$0.00	1,393.19	\$98,128.00	8,255.00	\$118,800.00	1,234.63	10,882.82
WMD Total:	8	\$0.00	301.79	\$115,575.00	43,075.36	\$5,686,345.05	151,040.91	\$4,538,600.00	23,098.49	217,214.76
<i>J. Clark Salyer WMD</i>										
Bottineau *	0.00	\$0.00	35.00	\$22,275.00	2,334.06	\$200,763.00	30,368.69	\$1,758,930.00	1,305.00	34,007.75
Mchenry *	0.00	\$0.00	0.00	\$0.00	4,888.80	\$374,404.50	31,954.00	\$1,308,245.00	31,991.59	68,834.39
Pierce *	7.40	\$14,800.00	225.00	\$81,050.00	8,403.66	\$936,855.00	37,684.00	\$1,518,060.00	11,552.87	57,640.53
Renville	0.00	\$0.00	0.00	\$0.00	311.09	\$23,523.00	16,967.00	\$1,841,665.00	31.60	17,309.69
Rolette	0.00	\$0.00	460.00	\$128,325.00	5,685.92	\$759,347.00	20,667.01	\$613,695.00	722.96	27,075.89
WMD Total:	5	\$14,800.00	720.00	\$231,650.00	21,623.53	\$2,294,892.50	137,640.70	\$7,040,595.00	45,604.02	204,868.25
<i>Kulm WMD</i>										
Dickey *	0.00	\$0.00	20.00	\$4,900.00	9,735.40	\$1,150,816.00	29,025.80	\$1,851,075.00	16,810.71	55,571.91
La Moure *	0.00	\$0.00	126.00	\$74,125.00	4,799.96	\$505,095.00	14,716.25	\$1,220,174.00	2,629.31	22,145.52
Logan *	0.00	\$0.00	14.00	\$2,525.00	11,226.24	\$1,006,598.00	39,365.50	\$1,261,336.00	21,759.00	72,350.74
Mcintosh *	0.00	\$0.00	0.00	\$0.00	17,373.48	\$1,368,865.00	30,821.00	\$889,985.00	11,239.28	59,433.76
WMD Total:	4	\$0.00	160.00	\$81,550.00	43,135.08	\$4,031,374.00	113,928.55	\$5,222,570.00	52,438.30	209,501.93
<i>Long Lake WMD</i>										
Burleigh *	0.00	\$0.00	177.00	\$69,025.00	9,451.44	\$1,899,164.00	27,742.10	\$919,375.00	36,922.17	74,115.71
Emmons *	0.00	\$0.00	610.00	\$111,675.00	3,135.29	\$174,321.75	12,593.00	\$479,450.00	3,827.81	19,556.10
Kidder *	0.00	\$0.00	0.00	\$0.00	5,547.52	\$438,439.00	65,066.02	\$1,109,380.00	45,522.60	116,136.14
WMD Total:	3	\$0.00	787.00	\$180,700.00	18,134.25	\$2,511,924.75	105,401.12	\$2,508,205.00	86,272.58	209,807.95
<i>Lostwood WMD</i>										
Mountrail *	0.00	\$0.00	0.00	\$0.00	9,905.10	\$940,661.00	31,898.00	\$991,856.00	37,721.28	79,524.38
WMD Total:	1	\$0.00	0.00	\$0.00	9,905.10	\$940,661.00	31,898.00	\$991,856.00	37,721.28	79,524.38
<i>Tewaukon WMD</i>										
Ransom	0.00	\$0.00	104.48	\$102,825.00	4,315.02	\$617,357.00	20,831.08	\$1,716,475.00	3,959.58	29,105.68
Richland	0.00	\$0.00	88.00	\$36,275.00	6,072.25	\$986,052.00	2,261.80	\$427,620.00	4,886.32	13,220.37
Sargent *	0.00	\$0.00	-5.00	\$0.00	3,537.46	\$305,439.00	14,592.40	\$1,002,610.00	10,021.45	28,151.31
WMD Total:	3	\$0.00	187.48	\$139,100.00	13,924.73	\$1,908,848.00	37,685.28	\$3,146,705.00	18,867.35	70,477.36
<i>Valley City WMD</i>										
Barnes *	0.00	\$0.00	404.00	\$371,425.00	6,661.68	\$958,087.00	20,077.00	\$2,281,035.00	2,347.51	29,086.19
Cass	0.00	\$0.00	0.00	\$0.00	3,439.89	\$628,344.00	1,709.00	\$133,825.00	50.90	5,199.79
Griggs	0.00	\$0.00	0.00	\$0.00	3,069.46	\$373,990.00	16,677.00	\$536,830.00	259.25	20,005.71
Steele	0.00	\$0.00	0.00	\$0.00	3,249.25	\$538,345.00	4,045.00	\$274,320.00	359.30	7,653.55
Trail	0.00	\$0.00	0.00	\$0.00	719.36	\$75,109.00	233.00	\$4,830.00	1.00	953.36
WMD Total:	5	\$0.00	404.00	\$371,425.00	17,139.64	\$2,573,875.00	42,741.00	\$3,230,840.00	3,017.96	62,898.60
State Total	40	\$14,800.00	4,472.02	\$1,566,150.00	238,829.88	\$25,430,351.30	865,318.22	\$36,139,312.00	404,087.97	1,508,236.07
South Dakota										
<i>Huron WMD</i>										
Beadle *	0.00	\$0.00	310.00	\$186,445.00	7,256.45	\$1,651,212.69	45,661.95	\$8,394,640.00	1,892.59	54,810.99

Table 2. Waterfowl Production Areas

State and Unit	FISCAL YEAR MBCF ACQUISITION				CUMULATIVE TOTALS AT END OF FISCAL YEAR					
	Purchased		Easement or Lease		MBCF				All Other Acres	Total Acres
	Acres	Cost	Acres	Cost	Purchased		Easement or Lease			
				Acres	Cost	Acres	Cost			
South Dakota (Continued)										
<i>Huron WMD</i>										
Buffalo	0.00	\$0.00	733.45	\$199,428.00	0.00	\$0.00	2,631.06	\$478,453.00	6,393.23	9,024.29
Hand *	0.00	\$0.00	0.00	\$0.00	3,670.56	\$580,260.35	64,301.90	\$9,087,424.00	5,953.88	73,926.34
Hughes	0.00	\$0.00	0.00	\$0.00	455.99	\$82,800.00	3,260.89	\$444,875.00	4.20	3,721.08
Hyde *	0.00	\$0.00	0.00	\$0.00	0.00	\$0.00	32,129.34	\$3,110,385.00	12,376.82	44,506.16
Jerauld *	0.00	\$0.00	421.40	\$164,500.00	1,430.40	\$217,041.00	25,439.72	\$3,154,040.00	894.70	27,764.82
Sanborn *	0.00	\$0.00	1,663.88	\$945,225.00	93.00	\$5,250.00	43,048.79	\$7,337,245.00	568.20	43,709.99
Sully *	0.00	\$0.00	0.00	\$0.00	266.48	\$9,993.00	4,072.73	\$626,590.00	1,983.48	6,322.69
<i>WMD Total:</i>	<i>8</i>	<i>0.00</i>	<i>3,128.73</i>	<i>\$1,495,598.00</i>	<i>13,172.88</i>	<i>\$2,546,557.04</i>	<i>220,546.38</i>	<i>\$32,633,652.00</i>	<i>30,067.10</i>	<i>263,786.36</i>
<i>Lacreek WMD</i>										
Haakon FSA **	0.00	\$0.00	0.00	\$0.00	0.00	\$0.00	0.00	\$0.00	1,806.10	1,806.10
Jones FSA **	0.00	\$0.00	0.00	\$0.00	0.00	\$0.00	0.00	\$0.00	221.97	221.97
Stanley FSA **	0.00	\$0.00	0.00	\$0.00	0.00	\$0.00	0.00	\$0.00	1,430.30	1,430.30
<i>WMD Total:</i>	<i>0</i>	<i>0.00</i>	<i>0.00</i>	<i>\$0.00</i>	<i>0.00</i>	<i>\$0.00</i>	<i>0.00</i>	<i>\$0.00</i>	<i>3,458.37</i>	<i>3,458.37</i>
<i>Lake Andes WMD</i>										
Aurora *	0.00	\$0.00	0.00	\$0.00	4,876.08	\$798,316.00	40,774.05	\$7,680,470.00	495.90	46,146.03
Bon Homme *	0.00	\$0.00	244.00	\$212,825.00	1,174.17	\$323,624.90	403.00	\$217,130.00	323.54	1,900.71
Brule	0.00	\$0.00	198.86	\$91,800.00	1,074.13	\$89,404.00	21,432.74	\$3,473,005.00	866.26	23,373.13
Charles Mix *	0.00	\$0.00	68.00	\$68,350.00	4,110.82	\$1,162,147.00	8,988.41	\$1,819,935.00	1,396.31	14,495.54
Clay *	0.00	\$0.00	0.00	\$0.00	40.00	\$8,000.00	7.00	\$200.00	52.50	99.50
Davison *	0.00	\$0.00	0.00	\$0.00	229.92	\$24,540.00	778.67	\$415,465.00	175.10	1,183.69
Douglas *	0.00	\$0.00	0.00	\$0.00	3,852.05	\$647,691.00	4,093.28	\$521,450.00	619.27	8,564.60
Hanson *	0.00	\$0.00	222.00	\$233,750.00	1,075.60	\$281,853.00	3,402.01	\$878,780.00	132.80	4,610.41
Hutchinson *	0.00	\$0.00	0.00	\$0.00	789.51	\$227,646.25	1,057.00	\$151,075.00	172.50	2,019.01
Lincoln	0.00	\$0.00	0.00	\$0.00	177.22	\$39,925.00	300.50	\$112,645.00	0.00	477.72
Tripp FSA **	0.00	\$0.00	0.00	\$0.00	0.00	\$0.00	0.00	\$0.00	5.90	5.90
Turner *	0.00	\$0.00	0.00	\$0.00	991.73	\$727,444.90	353.00	\$106,090.00	126.90	1,471.63
Union	0.00	\$0.00	0.00	\$0.00	96.02	\$22,331.00	0.00	\$0.00	0.00	96.02
Yankton	0.00	\$0.00	0.00	\$0.00	294.63	\$128,562.00	123.00	\$5,375.00	365.60	783.23
<i>WMD Total:</i>	<i>13</i>	<i>0.00</i>	<i>732.86</i>	<i>\$606,725.00</i>	<i>18,781.88</i>	<i>\$4,481,485.05</i>	<i>81,712.66</i>	<i>\$15,381,620.00</i>	<i>4,732.58</i>	<i>105,227.12</i>
<i>Madison WMD</i>										
Brookings *	0.00	\$0.00	39.00	\$27,550.00	6,159.47	\$1,650,276.70	7,976.05	\$2,188,866.00	4,010.37	18,145.89
Deuel *	0.00	\$0.00	363.00	\$164,225.00	3,228.87	\$492,022.00	28,701.29	\$4,019,200.00	7,113.48	39,043.64
Hamlin *	0.00	\$0.00	47.50	\$59,500.00	3,375.89	\$943,938.00	6,242.74	\$1,130,630.00	323.90	9,942.53
Kingsbury *	0.00	\$0.00	436.49	\$347,125.00	5,256.36	\$1,258,255.50	25,569.20	\$4,040,353.00	4,679.00	35,504.56
Lake *	0.00	\$0.00	113.00	\$167,100.00	5,672.95	\$1,296,457.75	6,657.32	\$1,953,635.00	917.12	13,247.39
McCook *	0.00	\$0.00	41.06	\$30,425.00	3,362.96	\$680,845.60	6,911.31	\$1,379,645.00	835.37	11,109.64
Miner *	0.00	\$0.00	1,448.23	\$1,054,100.00	1,545.87	\$153,695.00	26,818.15	\$7,712,390.00	1,299.80	29,663.82
Minnehaha *	0.00	\$0.00	0.00	\$0.00	4,606.03	\$1,342,286.00	1,720.44	\$387,620.00	27.60	6,354.07
Moody *	0.00	\$0.00	0.00	\$0.00	2,903.78	\$927,478.85	1,959.02	\$645,930.00	705.89	5,568.69
<i>WMD Total:</i>	<i>9</i>	<i>0.00</i>	<i>2,488.28</i>	<i>\$1,850,025.00</i>	<i>36,112.18</i>	<i>\$8,745,255.40</i>	<i>112,555.52</i>	<i>\$23,458,269.00</i>	<i>19,912.53</i>	<i>168,580.23</i>
<i>Sand Lake WMD</i>										
Brown	0.00	\$0.00	368.71	\$249,750.00	4,094.93	\$819,223.80	51,740.28	\$7,322,650.00	1,444.49	57,279.70
Campbell	0.00	\$0.00	0.00	\$0.00	1,919.71	\$185,541.00	26,328.51	\$2,389,605.00	526.20	28,774.42
Corson FSA **	0.00	\$0.00	0.00	\$0.00	0.00	\$0.00	0.00	\$0.00	1,105.90	1,105.90
Dewey FSA **	0.00	\$0.00	0.00	\$0.00	0.00	\$0.00	0.00	\$0.00	2,361.80	2,361.80
Edmunds *	72.10	\$50,000.00	164.94	\$72,425.00	9,037.86	\$1,767,201.00	132,538.23	\$14,275,185.00	2,692.47	144,268.56
Faulk *	0.00	\$0.00	86.00	\$54,925.00	2,566.88	\$480,995.00	137,992.93	\$11,411,090.00	3,721.36	144,281.17
Mcpherson *	0.00	\$0.00	849.47	\$288,225.00	19,254.66	\$3,375,636.80	146,735.00	\$9,088,890.00	12,927.53	178,917.19
Potter *	0.00	\$0.00	0.00	\$0.00	652.63	\$71,179.00	26,372.60	\$2,030,680.00	415.10	27,440.33
Spink *	0.00	\$0.00	0.00	\$0.00	2,233.86	\$399,130.00	29,150.55	\$4,311,000.00	1,308.20	32,692.61
Walworth *	0.00	\$0.00	35.00	\$14,450.00	1,524.54	\$191,800.00	21,417.44	\$1,894,090.00	853.30	23,795.28
<i>WMD Total:</i>	<i>8</i>	<i>72.10</i>	<i>1,504.12</i>	<i>\$679,775.00</i>	<i>41,285.07</i>	<i>\$7,290,706.60</i>	<i>572,275.54</i>	<i>\$52,723,190.00</i>	<i>27,356.35</i>	<i>640,916.96</i>
<i>Waubay WMD</i>										
Clark *	0.00	\$0.00	346.42	\$126,725.00	5,873.11	\$814,503.90	46,155.28	\$3,109,450.00	1,186.43	53,214.82
Codington *	0.00	\$0.00	388.52	\$175,000.00	5,089.31	\$882,837.70	11,117.17	\$942,515.00	1,566.65	17,773.13

Table 2. Waterfowl Production Areas

State and Unit	FISCAL YEAR MBCF ACQUISITION				CUMULATIVE TOTALS AT END OF FISCAL YEAR						
	Purchased		Easement or Lease		MBCF				All Other Acres	Total Acres	
	Acres	Cost	Acres	Cost	Purchased		Easement or Lease				
					Acres	Cost	Acres	Cost			
South Dakota (Continued)											
<i>Waubay WMD</i>											
Day	208.64	\$350,000.00	330.64	\$147,275.00	6,541.27	\$807,107.00	45,309.19	\$3,345,045.00	1,653.75	53,504.21	
Grant	0.00	\$0.00	734.02	\$457,850.00	5,362.99	\$1,005,000.00	24,045.19	\$3,693,360.00	437.85	29,846.03	
Marshall *	0.00	\$0.00	236.56	\$117,050.00	10,098.51	\$1,923,929.00	58,494.91	\$4,697,731.00	966.90	69,560.32	
Roberts *	0.00	\$0.00	506.42	\$150,075.00	5,150.73	\$823,410.80	51,689.17	\$3,776,475.00	2,728.08	59,567.98	
<i>WMD Total:</i>	<i>6</i>	<i>208.64</i>	<i>\$350,000.00</i>	<i>2,542.58</i>	<i>\$1,173,975.00</i>	<i>38,115.92</i>	<i>\$6,256,788.40</i>	<i>236,810.91</i>	<i>\$19,564,576.00</i>	<i>8,539.66</i>	<i>283,466.49</i>
State Total	44	280.74	\$400,000.00	10,396.57	\$5,806,098.00	147,467.93	\$29,320,792.49	1,223,901.01	\$143,761,307.00	94,066.59	1,465,435.53
Wisconsin											
<i>Leopold WMD</i>											
Adams	0.00	\$0.00	0.00	\$0.00	344.00	\$172,500.00	0.00	\$0.00	0.00	344.00	
Columbia	22.09	\$175,000.00	0.00	\$0.00	3,663.33	\$5,022,951.45	0.00	\$0.00	66.85	3,730.18	
Dane	135.78	\$1,020,000.00	0.00	\$0.00	1,671.36	\$2,979,875.65	0.00	\$0.00	55.50	1,726.86	
Dodge	0.00	\$0.00	0.00	\$0.00	698.98	\$1,079,141.16	0.43	\$1,000.00	109.81	809.22	
Fond Du Lac	204.50	\$818,000.00	0.00	\$0.00	881.06	\$1,699,888.00	0.00	\$0.00	284.84	1,165.90	
Jefferson	0.00	\$0.00	0.00	\$0.00	249.79	\$241,239.00	0.00	\$0.00	0.00	249.79	
Manitowoc	0.00	\$0.00	0.00	\$0.00	256.13	\$186,000.00	0.00	\$0.00	0.00	256.13	
Marquette	0.00	\$0.00	0.00	\$0.00	259.97	\$119,480.00	0.00	\$0.00	0.00	259.97	
Ozaukee	0.00	\$0.00	0.00	\$0.00	709.30	\$1,591,413.40	0.00	\$0.00	0.00	709.30	
Rock	0.00	\$0.00	0.00	\$0.00	349.32	\$302,358.71	0.00	\$0.00	0.00	349.32	
Sauk	0.00	\$0.00	0.00	\$0.00	24.16	\$136,000.00	0.00	\$0.00	210.88	235.04	
Sheboygan	0.00	\$0.00	0.00	\$0.00	485.92	\$1,322,636.94	0.00	\$0.00	223.99	709.91	
Waushara	0.00	\$0.00	0.00	\$0.00	232.30	\$243,000.00	0.00	\$6,000.00	0.00	232.30	
Winnebago	0.00	\$0.00	0.00	\$0.00	1,870.13	\$1,348,651.00	0.00	\$0.00	249.24	2,119.37	
<i>WMD Total:</i>	<i>14</i>	<i>362.37</i>	<i>\$2,013,000.00</i>	<i>0.00</i>	<i>\$0.00</i>	<i>11,695.75</i>	<i>\$16,445,135.31</i>	<i>0.43</i>	<i>\$7,000.00</i>	<i>1,201.11</i>	<i>12,897.29</i>
<i>St. Croix WMD</i>											
Dunn	60.27	\$178,500.00	0.00	\$0.00	531.45	\$680,700.00	0.00	\$0.00	150.80	682.25	
Polk	0.00	\$0.00	0.00	\$0.00	845.09	\$417,424.00	0.00	\$0.00	221.98	1,067.07	
St. Croix	0.00	\$0.00	0.00	\$0.00	5,519.75	\$8,209,039.56	0.64	\$1,500.00	260.41	5,780.80	
<i>WMD Total:</i>	<i>3</i>	<i>60.27</i>	<i>\$178,500.00</i>	<i>0.00</i>	<i>\$0.00</i>	<i>6,896.29</i>	<i>\$9,307,163.56</i>	<i>0.64</i>	<i>\$1,500.00</i>	<i>633.19</i>	<i>7,530.12</i>
State Total	17	422.64	\$2,191,500.00	0.00	\$0.00	18,592.04	\$25,752,298.87	1.07	\$8,500.00	1,834.30	20,427.41
Grand Total	206	987.51	\$3,974,100.00	19,275.47	\$10,464,533.42	687,382.91	\$232,772,493.41	2,307,832.57	\$232,374,264.33	550,574.78	3,545,790.26

* These counties include interests transferred by the FSA.
 ** Denotes interests transferred by the FSA.

FSA - Farm Service Agency (Formerly Farmers Home Administration, Department of Agriculture)

North American Wetlands Conservation Fund (NAWCF)

Summary of MBCC Approvals for Fiscal Year 2011

The Migratory Bird Conservation Commission approved 64 wetland conservation project proposals for funding in Fiscal Year 2011 under the North American Wetlands Conservation Act. A total of \$75,835,580 from the North American Wetlands Conservation Fund, together with \$217,231,148 in partner funds, are supporting 50 projects in the United States, 6 in Canada, and 8 in Mexico. The following tables provide summary and detailed project information.

Fiscal Year 2011

Projects Approved by the Migratory Bird Conservation Commission and Active Under the North American Wetlands Conservation Act

<i>Country</i>	<i>No. of Projects</i>	<i>Act Funds</i>	<i>Partner Funds</i>	<i>Acres Affected</i>
U.S.	50	\$49,306,106	\$163,938,653	235,355
Canada	6	\$23,559,250	\$33,893,685	139,725
Mexico	8	\$2,970,224	\$19,398,810	277,213
Total	64	\$75,835,580	\$217,231,148	652,293
<i>U.S. Small Grants</i>	45	\$3,167,794	\$21,128,732	25,017

In addition, the Commission approved 45 United States small grant proposals, totaling \$3,167,794 from the Fund, supported by \$21,128,732 in partner funds, affecting 25,017 acres.

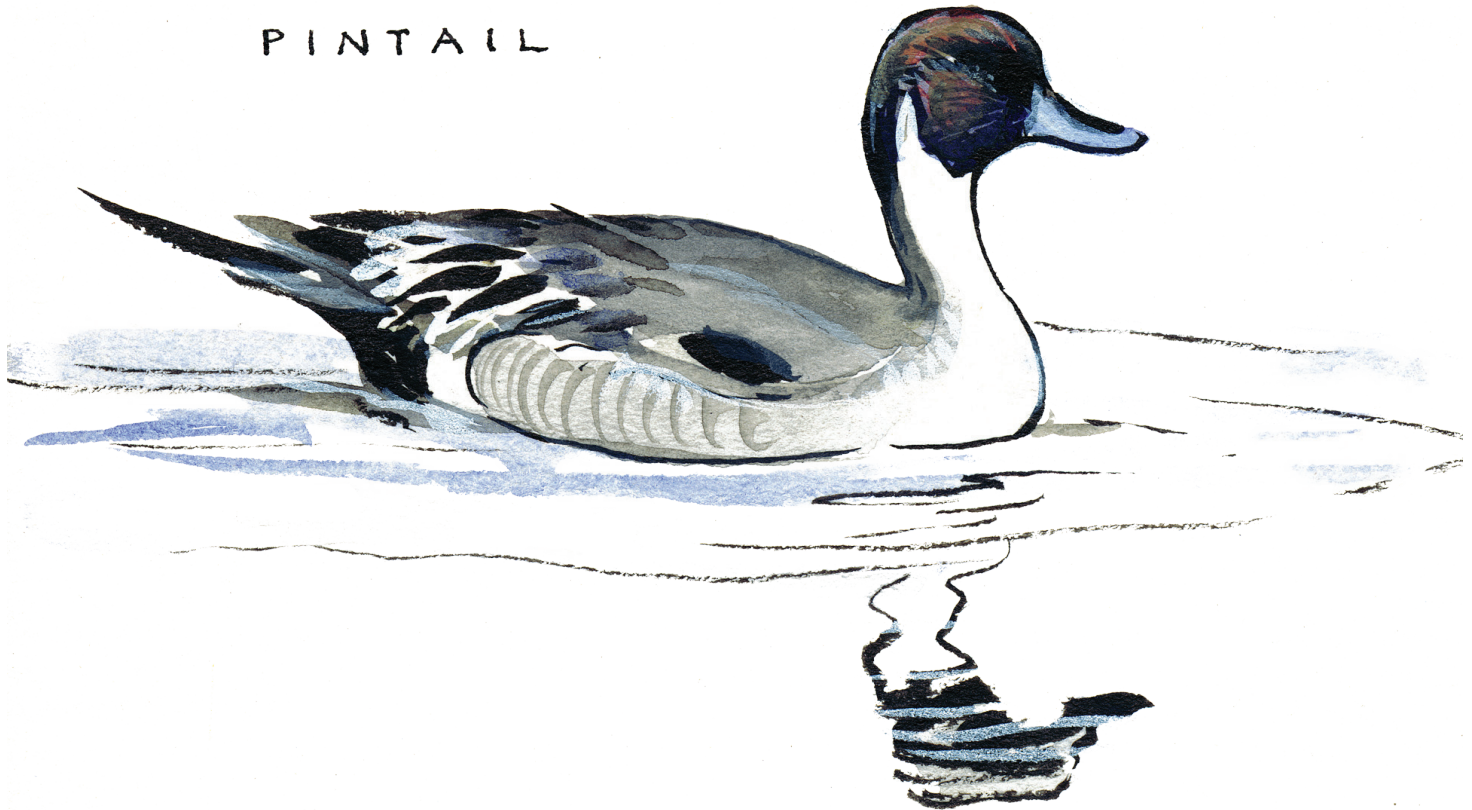


Table 3. U.S. Wetlands Conservation Standard Grants Proposals

<i>Project Name</i>	<i>State Province</i>	<i>NAWCA Grant</i>	<i>Non-Fed Match</i>	<i>Non-Fed Non-Match</i>	<i>Federal Funds</i>	<i>Total Partners</i>	<i>Total Cost</i>	<i>Total Acres</i>
ACADIA ARCHIPELAGO	ME	\$1,000,000	\$4,450,000	\$0	\$0	\$4,450,000	\$5,450,000	1,101
ACE BASIN: EDISTO RIVER CORRIDOR V	SC	\$979,320	\$11,934,400	\$0	\$0	\$11,934,400	\$12,913,720	2,220
ARK-LA-MISS WETLANDS CONSERVATION II	AR,LA	\$999,917	\$1,944,675	\$0	\$108,367	\$2,053,042	\$3,052,959	1,753
AUSTIN'S WOODS IV	TX	\$1,000,000	\$2,854,000	\$130,000	\$50,000	\$3,034,000	\$4,034,000	1,113
BIG OXBOW WETLAND ACQUISITION, PHASE II	ND	\$282,539	\$282,739	\$0	\$0	\$282,739	\$565,278	481
BUZZARDS BAY: LITTLE RIVER	MA	\$925,025	\$4,240,000	\$0	\$0	\$4,240,000	\$5,165,025	134
BUZZARDS BAY: LOWER WEWEANTIC	MA	\$796,306	\$806,100	\$0	\$0	\$806,100	\$1,602,406	128
CARTERET COUNTY, NC COASTAL INITIATIVE	NC	\$1,000,000	\$2,028,000	\$0	\$1,426,000	\$3,454,000	\$4,454,000	1,105
CHELSEA CREEK WETLANDS AND HABITAT CONSERVATION PROJECT	MA	\$1,663,150	\$5,604,100	\$0	\$0	\$5,604,100	\$7,267,250	17
COASTAL MARIN WETLANDS RESTORATION PROJECT II	CA	\$998,900	\$1,998,852	\$0	\$542,100	\$2,540,952	\$3,539,852	552
COBSCOOK BAY, BOLD COAST PROJECT AREA PHASE II	ME	\$1,000,000	\$2,187,240	\$0	\$15,000	\$2,202,240	\$3,202,240	974
CONSERVATION IN THE CONFLUENCE II	MO	\$997,755	\$2,866,937	\$0	\$0	\$2,866,937	\$3,864,692	1,181
DEADWATER, NECHES RIVER NWR	TX	\$1,000,000	\$2,255,000	\$0	\$101,847	\$2,356,847	\$3,356,847	2,090
DELAWARE BAYSHORES LAND PROTECTION AND CLIMATE CHANGE ADAPTATION	DE	\$900,000	\$2,501,456	\$0	\$0	\$2,501,456	\$3,401,456	664
DOS RIOS RANCH	CA	\$1,000,000	\$7,059,497	\$0	\$0	\$7,059,497	\$8,059,497	757
GLACIAL RIDGE PRAIRIE LANDSCAPE EXPANSION	MN	\$1,000,000	\$2,482,689	\$0	\$0	\$2,482,689	\$3,482,689	4,288
GLACIATED WETLANDS AND PRAIRIES OF ND AND MN	MN,ND	\$1,000,000	\$1,038,172	\$0	\$30,825	\$1,068,997	\$2,068,997	11,717
GREAT MARSH HABITAT PROTECTION	MA	\$1,000,000	\$2,116,000	\$0	\$0	\$2,116,000	\$3,116,000	210
GULF COAST WETLANDS RESTORATION AND ENHANCEMENT III	LA,TX	\$1,000,000	\$2,140,533	\$0	\$28,172	\$2,168,705	\$3,168,705	6,822
HARVEY DUNN GRASSLAND PRESERVATION PROJECT, IV	SD	\$1,000,000	\$1,064,527	\$0	\$0	\$1,064,527	\$2,064,527	2,397
HENRY'S FORK III	ID	\$1,000,000	\$2,015,910	\$0	\$0	\$2,015,910	\$3,015,910	2,030
KLAMATH BASIN WETLANDS II	CA	\$1,000,000	\$2,063,939	\$0	\$186,284	\$2,250,223	\$3,250,223	11,515
LAKE ONTARIO WATERSHED AND COASTAL WETLAND PROTECTION: PHASE I	NY	\$1,000,000	\$2,000,000	\$7,793,502	\$0	\$9,793,502	\$10,793,502	7,162
LIVING FLOODPLAINS OF NW OREGON AND SW WASHINGTON, PHASE II	OR	\$1,000,000	\$2,012,086	\$0	\$0	\$2,012,086	\$3,012,086	762
LIVING FLOODPLAINS OF NW OREGON AND SW WASHINGTON, PHASE III	OR	\$1,000,000	\$2,065,551	\$0	\$0	\$2,065,551	\$3,065,551	725
LOWER YELLOWSTONE WETLANDS CONSERVATION PROJECT, PHASE I	MT	\$785,951	\$1,705,439	\$0	\$99,300	\$1,804,739	\$2,590,690	3,006
MISSOURI COTEAU HABITAT CONSERVATION PROJECT, IX	ND	\$1,000,000	\$1,078,976	\$0	\$0	\$1,078,976	\$2,078,976	16,138
MUKWONAGO, FOX RIVER WATERSHED INITIATIVE	WI	\$1,000,000	\$5,911,586	\$0	\$0	\$5,911,586	\$6,911,586	4,153
NORTH DAKOTA NORTHERN PRAIRIE PROJECT	ND	\$1,000,000	\$1,072,016	\$0	\$150,409	\$1,222,425	\$2,222,425	55,253
NORTH PARK WETLAND CONSERVATION PARTNERSHIP	CO	\$997,360	\$4,350,042	\$0	\$62,857	\$4,412,899	\$5,410,259	8,367
NORTHEASTERN CALIFORNIA WETLANDS HABITAT PROJECT, PHASE I	CA	\$1,000,000	\$1,057,850	\$0	\$98,000	\$1,155,850	\$2,155,850	4,535
PISCATAQUIS RIVER / ALDER STREAM WETLANDS, PHASE II	ME	\$1,000,000	\$2,115,000	\$16,600	\$6,300	\$2,137,900	\$3,137,900	6,049
PLATTE RIVER CONFLUENCE PHASE III	NE	\$997,038	\$2,170,535	\$0	\$20,000	\$2,190,535	\$3,187,573	1,889
PLATTE RIVER WETLANDS PARTNERSHIP III	CO,WY	\$999,945	\$2,098,132	\$0	\$0	\$2,098,132	\$3,098,077	6,427
PRAIRIE LAKES V WETLAND INITIATIVE	IA	\$1,000,000	\$2,442,917	\$0	\$0	\$2,442,917	\$3,442,917	3,466
PRAIRIES WITHOUT BORDERS (PHASE II)	MN,ND,SD	\$1,000,000	\$1,002,300	\$0	\$58,300	\$1,060,600	\$2,060,600	2,630
ROCKY MOUNTAIN FRONT PROTECTION PROJECT III	MT	\$1,000,000	\$4,974,000	\$0	\$4,310,000	\$9,284,000	\$10,284,000	20,745
SAN LUIS VALLEY RIO GRANDE INITIATIVE III	CO	\$1,000,000	\$3,218,850	\$0	\$5,000	\$3,223,850	\$4,223,850	1,977
SOUTHCENTRAL WISCONSIN PRAIRIE POTHOLE INITIATIVE V	WI	\$1,000,000	\$4,477,920	\$0	\$31,000	\$4,508,920	\$5,508,920	3,312
SOUTHEAST WISCONSIN COASTAL HABITAT INITIATIVE, PHASE V	WI	\$1,000,000	\$3,082,988	\$0	\$12,000	\$3,094,988	\$4,094,988	1,836
SOUTHERN SAN JOAQUIN VALLEY WETLAND HABITAT PROJECT, PHASE I	CA	\$1,000,000	\$1,071,931	\$0	\$12,600	\$1,084,531	\$2,084,531	4,189

Table 3. U.S. Wetlands Conservation Standard Grants Proposals (continued)

<i>Project Name</i>	<i>State Province</i>	<i>NAWCA Grant</i>	<i>Non-Fed Match</i>	<i>Non-Fed Non-Match</i>	<i>Federal Funds</i>	<i>Total Partners</i>	<i>Total Cost</i>	<i>Total Acres</i>
ST. JOHNS RIVER HEADWATERS, PHASE II	FL	\$1,000,000	\$2,005,000	\$0	\$0	\$2,005,000	\$3,005,000	350
SUISUN MARSH MANAGED WETLAND ENHANCEMENT PROJECT, PHASE III	CA	\$1,000,000	\$1,005,884	\$0	\$0	\$1,005,884	\$2,005,884	10,860
TEXAS CHENIER PLAIN WETLAND REST & ENH OF PRIVATE & PUBLIC LANDS III	TX	\$999,900	\$2,127,773	\$0	\$0	\$2,127,773	\$3,127,673	1,525
UPPER IOWA PRAIRIE POTHOLE PARTNERSHIP, PHASE II	IA	\$1,000,000	\$2,005,000	\$0	\$20,000	\$2,025,000	\$3,025,000	762
VERMILION BAY COASTAL WETLANDS RESTORATION	LA	\$1,000,000	\$2,782,531	\$0	\$0	\$2,782,531	\$3,782,531	7,605
WEST PONTCHARTRAIN, MAUREPAS SWAMP IBA HABITAT CONSERVATION EFFORT	LA	\$1,000,000	\$2,215,000	\$6,587,280	\$0	\$8,802,280	\$9,802,280	1,914
WETLANDS REST & ENH OF PRIVATE & PUBLIC LANDS, TEXAS GULF COAST VIII	TX	\$998,000	\$1,496,609	\$0	\$100,000	\$1,596,609	\$2,594,609	3,025
WHITE AND CACHE RIVERS WETLANDS CONSERVATION PROJECT	AR	\$985,000	\$2,146,750	\$0	\$4,400	\$2,151,150	\$3,136,150	1,280
WINYAH BAY PROTECTION PROJECT: PHASE III	SC	\$1,000,000	\$12,305,078	\$0	\$0	\$12,305,078	\$13,305,078	2,166
Number of Projects: 50		\$49,306,106	\$141,932,510	\$14,527,382	\$7,478,761	\$163,938,653	\$213,244,759	235,356

Table 4. U.S. Wetlands Conservation Small Grant Proposals

<i>Project Name</i>	<i>State Province</i>	<i>NAWCA Grant</i>	<i>Non-Fed Match</i>	<i>Non-Fed Non-Match</i>	<i>Federal Funds</i>	<i>Total Partners</i>	<i>Total Cost</i>	<i>Total Acres</i>
ARKANSAS RIVER VALLEY WETLANDS RESTORATION PHASE I	AR	\$75,000	\$103,000	\$0	\$5,000	\$108,000	\$183,000	1,412
BALLARD COUNTY WILDLIFE MANAGEMENT AREA WETLAND ENHANCEMENT PROJECT	KY	\$75,000	\$277,900	\$0	\$0	\$277,900	\$352,900	238
BARN ISLAND WILDLIFE MANAGEMENT AREA EXPANSION PROJECT	CT	\$75,000	\$402,250	\$1,335,250	\$1,397,500	\$3,135,000	\$3,210,000	71
BLACKWATER POOLS 3 & 5 WETLAND RESTORATION	MD	\$75,000	\$126,240	\$0	\$5,000	\$131,240	\$206,240	141
BROUSSARD WETLANDS ENHANCEMENT	LA, TX	\$75,000	\$97,836	\$0	\$0	\$97,836	\$172,836	393
BUZZARDS BAY: MATTAPOISETT RIVER WETLANDS	MA	\$75,000	\$380,000	\$0	\$0	\$380,000	\$455,000	116
CENTRAL PENJAJAWOC PROPERTY ACQUISITION	ME	\$75,000	\$149,471	\$0	\$0	\$149,471	\$224,471	75
CHEHALIS WILDLIFE AREA EXPANSION	WA	\$75,000	\$92,000	\$0	\$100,000	\$192,000	\$267,000	76
COX HALL CREEK WETLAND RESTORATION	NJ	\$75,000	\$75,000	\$0	\$10,000	\$85,000	\$160,000	287
CRAZY WOMAN BISON RANCH CONSERVATION EASEMENT	MT	\$75,000	\$155,000	\$0	\$0	\$155,000	\$230,000	2,466
CROCKETT LAKE EAST WETLANDS	WA	\$75,000	\$150,000	\$0	\$262,500	\$412,500	\$487,500	138
DEWEES ISLAND OLD HOUSE LAGOON RESTORATION AND ENHANCEMENT	SC	\$75,000	\$92,322	\$1,337	\$1,478	\$95,137	\$170,137	120
EPHRATA LAKE ACQUISITION	WA	\$75,000	\$75,000	\$0	\$100,000	\$175,000	\$250,000	560
FENMONT WMA	MN	\$75,000	\$162,566	\$0	\$0	\$162,566	\$237,566	40
GCJV MOTTLED DUCK CONSERVATION PLAN, PHASE IV	TX	\$32,000	\$87,000	\$0	\$0	\$87,000	\$119,000	2,250
GOODYEAR DUCK CLUB ENHANCEMENT PROJECT	CA	\$75,000	\$75,000	\$0	\$0	\$75,000	\$150,000	340
GRASSLANDS WETLAND ENHANCEMENT	CA	\$75,000	\$151,016	\$0	\$0	\$151,016	\$226,016	920
GRASSLANDS WETLAND RESTORATION AND UPLAND ENHANCEMENT PROJECT	CA	\$75,000	\$77,960	\$0	\$0	\$77,960	\$152,960	240
GREAT HEATH ECOLOGICAL RESERVE EXPANSION PROJECT	ME	\$59,500	\$105,500	\$0	\$1,000	\$106,500	\$166,000	366
HUNTER COVE, RANGELEY LAKE	ME	\$75,000	\$1,802,559	\$0	\$0	\$1,802,559	\$1,877,559	209
MADRENA WMA ADDITION	MN	\$75,000	\$277,000	\$0	\$0	\$277,000	\$352,000	160
MARSH ROAD ACQ AND RESTORATION OF THE LOWER WOLF RIVER BOTTOM WILDLIFE AREA	WI	\$52,000	\$98,700	\$0	\$0	\$98,700	\$150,700	45
MASON BAY COASTAL CONSERVATION AREA, PHASE III, UPPER WHITE CREEK SALT MARSH	ME	\$75,000	\$80,500	\$0	\$3,000	\$83,500	\$158,500	30
MEADOW VALLEY FLOWAGE WETLAND ENHANCEMENT PROJECT, PHASE II	WI	\$75,000	\$80,708	\$0	\$0	\$80,708	\$155,708	655
NORTHWEST WISCONSIN WETLAND & GRASSLAND PROGRAM, PHASE II	WI	\$68,646	\$68,646	\$0	\$0	\$68,646	\$137,292	210
OCEAN POINT PRESERVE PROJECT	ME	\$75,000	\$255,000	\$130,455	\$3,000	\$388,455	\$463,455	25
PAWTUCKAWAY RIVER GREENWAY, PHASE II	NH	\$41,500	\$41,500	\$25,000	\$247,000	\$313,500	\$355,000	175

Table 4. U.S. Wetlands Conservation Small Grant Proposals (continued)

<i>Project Name</i>	<i>State Province</i>	<i>NAWCA Grant</i>	<i>Non-Fed Match</i>	<i>Non-Fed Non-Match</i>	<i>Federal Funds</i>	<i>Total Partners</i>	<i>Total Cost</i>	<i>Total Acres</i>
PURDY RANCH PLAYA AND NATIVE GRASSLANDS CONSERVATION PROJECT	CO	\$75,000	\$1,794,500	\$0	\$0	\$1,794,500	\$1,869,500	8,684
PURPLE SAGE RANCH OXBOW WETLAND RESTORATION	WY	\$50,000	\$178,250	\$0	\$72,708	\$250,958	\$300,958	89
RASLYNN WATERFOWL COMPLEX ADDITION	MN	\$75,000	\$211,600	\$0	\$0	\$211,600	\$286,600	88
RICH VALLEY WATERFOWL COMPLEX ADDITION	MN	\$75,000	\$186,000	\$0	\$0	\$186,000	\$261,000	80
RIPARIAN & WETLANDS RESTORATION IN THE JEMEZ MOUNTAINS	NM	\$75,000	\$257,042	\$0	\$250,310	\$507,352	\$582,352	220
SANGAMON BAY & TREADWAY LAKE PERMANENT CONSERVATION EASEMENTS	IL	\$75,000	\$138,100	\$0	\$0	\$138,100	\$213,100	658
SCHULTZ LAKE WETLAND ENHANCEMENT	MI	\$39,148	\$39,326	\$0	\$0	\$39,326	\$78,474	38
SHEFFIELD, EGREMONT AGRICULTURAL, ECOLOGICAL & SCENIC CORRIDOR, WETLAND HAB	MA	\$75,000	\$250,000	\$3,670,000	\$0	\$3,920,000	\$3,995,000	29
SLATE CREEK WETLANDS	KS	\$75,000	\$307,218	\$7,230	\$0	\$314,448	\$389,448	173
SMELT BROOK CONSERVATION AREA	ME	\$75,000	\$515,000	\$69,750	\$0	\$584,750	\$659,750	30
THEODORE ROOSEVELT NWR COMPLEX, WETLAND HAB REST & AG RUN-OFF ABATEMENT	MS	\$75,000	\$96,492	\$0	\$9,530	\$106,022	\$181,022	450
UPPER GREAT MARSH TIDAL MARSH RESTORATION	MA	\$75,000	\$134,492	\$0	\$7,500	\$141,992	\$216,992	450
UPPER WOLF RIVER, SPINOLO TRACT ACQUISITION	TN	\$75,000	\$170,850	\$0	\$0	\$170,850	\$245,850	154
WET MEADOW RESTORATION AT HENNEPIN & HOPPER LAKES	IL	\$75,000	\$152,400	\$0	\$0	\$152,400	\$227,400	120
WHITE RIVER VALLEY IRRIGATED RANCLANDS CONSERVATION PROJECT	CO	\$75,000	\$2,416,000	\$0	\$628,000	\$3,044,000	\$3,119,000	1,373
WILD WINGS WMA ADDITION	MN	\$75,000	\$99,866	\$0	\$0	\$99,866	\$174,866	50
WISCONSIN PRIVATE LAND WETLAND RESTORATION PROJECT	WI	\$50,000	\$60,500	\$0	\$5,000	\$65,500	\$115,500	425
WOLF LAKE WPA	MN	\$75,000	\$233,875	\$0	\$0	\$233,875	\$308,875	148
Number of Projects: 45		\$3,167,794	\$12,781,185	\$5,239,022	\$3,108,526	\$21,128,732	\$24,296,526	25,017

Table 5. Canadian Wetlands Conservation Proposals

<i>Project Name</i>	<i>State Province</i>	<i>NAWCA Grant</i>	<i>Non-Fed Match</i>	<i>Non-Fed Non-Match</i>	<i>Federal Funds</i>	<i>Total Partners</i>	<i>Total Cost</i>	<i>Total Acres</i>
BRITISH COLUMBIA PACIFIC COAST & CANADIAN INTERMOUNTAIN CONS PROG 2011-3	AB,BC	\$2,154,344	\$2,154,344	\$200,000	\$0	\$2,354,344	\$4,508,688	2,204
CANADIAN PRAIRIE/PARKLAND AND WESTERN BOREAL HABITAT PROGRAM 2011-3	AB,BC,MB,NT,SK,YT	\$15,726,709	\$15,726,709	\$5,581,000	\$138,000	\$21,445,709	\$37,172,418	122,951
DUC / EASTERN HABITAT JOINT VENTURE WETLANDS CONSERVATION 2011-3	NB,NF,NS,ON,PE,QC	\$3,662,424	\$3,662,424	\$1,625,338	\$0	\$5,287,762	\$8,950,186	4,931
NCC BRITISH COLUMBIA: CIJV & PCJV WETLAND-ASSOC MIG BIRD HABITAT CONS 2011-3	BC	\$515,663	\$515,663	\$1,417,317	\$0	\$1,932,980	\$2,448,643	239
NCC QUEBEC & ATLANTIC: PROTECTING WETLAND & UPLAND HABITAT 2011-3, EHJV	NB,NF,NS,PE,QC	\$843,812	\$843,812	\$755,376	\$0	\$1,599,188	\$2,443,000	2,200
POTHOLES PLUS PROGRAM	MB	\$656,298	\$656,298	\$617,404	\$0	\$1,273,702	\$1,930,000	7,200
Number of Projects: 6		\$23,559,250	\$23,559,250	\$10,196,435	\$138,000	\$33,893,685	\$57,452,935	139,725

Table 6. Mexican Wetlands Conservation Proposals

<i>Project Name</i>	<i>State Province</i>	<i>NAWCA Grant</i>	<i>Non-Fed Match</i>	<i>Non-Fed Non-Match</i>	<i>Federal Funds</i>	<i>Total Partners</i>	<i>Total Cost</i>	<i>Total Acres</i>
CONS. OF THE PACIFIC BRANT WINTERING HABITAT IN THE VIZCAINO WETLANDS	BCS	\$250,000	\$1,675,144	\$0	\$0	\$1,675,144	\$1,925,144	226,314
CONSERVATION OF PRIORITY WETLANDS IN THE YUCATAN PENINSULA, PHASE 2	Q.ROO,YUC	\$700,000	\$892,580	\$0	\$0	\$892,580	\$1,592,580	988
HABITAT PROTECTION FOR MIG. BIRDS IN BAHIA MAGDALENA-ALMEJAS WETLAND COMPLEX II	BCS	\$450,829	\$1,292,636	\$0	\$0	\$1,292,636	\$1,743,465	1,134
INVENTORY & CLASSIFICATION OF CRITICAL WETLANDS IN MEXICO, PHASE VI: N. HIGHLAND	CHIH,COAH,DGO, NL,SIN,SLP,SON, TAMPS,ZAC	\$352,032	\$391,120	\$0	\$0	\$391,120	\$743,152	0
PROTECTION AND MANAGEMENT OF LAGUNA BABICORA, CHIHUAHUA PHASE II	CHIH	\$285,064	\$393,005	\$0	\$0	\$393,005	\$678,069	35,582
PROTECTION AND RESTORATION ON THE RIO BRAVO DELTA: LAGUNA MADRE PHASE II	TAMPS	\$493,165	\$14,141,600	\$0	\$0	\$14,141,600	\$14,634,765	12,350
REST. & CREATION OF FRESH WATER WETLANDS ADJACENT TO LAGUNA MADRE	TAMPS	\$179,156	\$195,382	\$0	\$0	\$195,382	\$374,538	721
REST. AND ALTERNATIVES FOR THE SUSTAINABILITY OF THE ALVARADO LAGOON SYSTEM	VER	\$259,978	\$417,343	\$0	\$0	\$417,343	\$677,321	124
Number of Projects: 8		\$2,970,224	\$19,398,810	\$0	\$0	\$19,398,810	\$22,369,034	277,213

Membership of the Migratory Bird Conservation Commission

Fiscal Year	Secretary of the Interior ¹	Secretary of Agriculture ²	Secretary of Commerce ³	Secretary of Transportation ⁴	Administrator of EPA ⁵	Members on Part of the Senate	Members on Part of the House	Secretary to the Commission
1929	Roy L. Wilbur	Arthur M. Hyde	Robert P. Lamont			Harry B. Hawes	Sam D. McReynolds	Rudolph Dieffenbach
1930							Ernest R. Ackerman	
1931								
1932							August H. Anderson	
1933	Harold L. Ickes	Henry A. Wallace	Daniel C. Roper			Key Pittman	Roy D. Woodruff	
1934							Chester C. Bolton	
1935								
1936								
1937						Charles L. McNary	James Wolfenden	
1938								
1939			Harry L. Hopkins					
1940							John J. Cochran	
1941		Claude R. Wickard	Jessie H. Jones			George L. Radcliffe		
1942								
1943								
1944							Walter E. Brehm	
1945		Clinton P. Anderson	Henry A. Wallace					
1946	Julius A. Krug							
1947			W. Averell Harriman			A. Willis Robertson	Frank M. Karsten	
1948		Charles F. Brannon	Charles W. Sawyer					Arthur A. Riemer
1949								
1950	Oscar L. Chapman					Raymond E. Baldwin		
1951						Vacant		
1952						John W. Bricker		
1953	Douglas McKay	Ezra Taft Benson	Sinclair Weeks				August H. Anderson	
1954								
1955								
1956	Fred A. Seaton					Thomas C. Hennings, Jr.		
1957								
1958								Albert J. Rissman
1959			Lewis L. Strauss				Leon H. Gavin	
1960			Frederick H. Meuller					
1961	Stewart L. Udall	Orville L. Freeman	Luther H. Hodges			Roman L. Hruska		
1962						Lee Metcalf		
1963								
1964								
1965			John T. Connor				George A. Gooding	
1966							Silvio O. Conte	FG.Spoden Jr.
1967			Alexander B. Trowbridge					
1968				Alan S. Boyd				
1969	Walter J. Hickel	Clifford M. Hardin		John A. Volpe		Henry L. Bellman	John D. Dingell	

Fiscal Year	Secretary of the Interior ¹	Secretary of Agriculture ²	Secretary of Commerce ³	Secretary of Transportation ⁴	Administrator of EPA ⁵	Members on Part of the Senate	Members on Part of the House	Secretary to the Commission
1970						Joseph D. Tydings		
1971	Rogers C.B. Morton					Lee Metcalf		Walter R. McAllester
1972		Earl L. Butz						
1973				Claude S. Brinegar				
1974								
1975	Stanley Hathaway			William T. Coleman		Quentin N. Burdick		
1976	Thomas S. Kleppe							
1977	Cecil D. Andrus	Bob Bergland		Brook Adams		Floyd K. Haskell		
1978								
1979				Neil Goldschmidt		David H. Pryor		
1980								
1981	James G. Watt	James R. Block		Drew Lewis		Thad Cochran		
1982								
1983				Elizabeth H. Dole				
1984	William P. Clark							
1985	Donald Hodel							
1986		Richard Lyng						
1987								William F. Hartwig
1988				James Burnley IV				
1989	Manuel Lujan Jr.	Clayton Yeutter		Samuel K. Skinner				
1990					William K. Reilly			
1991		Edward R. Madigan					Richard T. Schulze	
1992								
1993	Bruce Babbitt	Mike Espy			Carol M. Browner		Curt Weldon	Geoffrey L. Haskett
1994								
1995		Daniel R. Glickman						Jeffery M. Donahoe
1996						John B. Breaux		
1997								
1998								
1999								
2000								
2001	Gale Norton	Ann M. Veneman			Christine Todd-Whitman			
2002					Michael O. Leavitt			A. Eric Alvarez
2003								
2004								
2005		Mike Johanns				Blanche L. Lincoln		
2006	Dirk Kempthorne							
2007							Wayne T. Gilchrest	
2008		Edward Schafer						
2009	Kenneth L. Salazar	Thomas J. Vilsack			Lisa P. Jackson		Robert J. Wittman	
2010								
2011					Mark Pryor			

1. Chairman, 1940 to date 3. Member, 1929 to March 1, 1968
2. Chairman, 1929 to 1939 4. Member, March 2, 1968 to December 12, 1989
5. Member, December 13, 1989 to date

U.S. Department of the Interior
U.S. Fish and Wildlife Service
Division of Realty
realty.fws.gov
May 2012

