

U.S. Fish & Wildlife Service

2014 Annual Report

*Migratory Bird
Conservation Commission*





On the Cover: *Pair of canvasbacks.*
Painting by Adam Grimm for the
2014–2015 Federal Duck Stamp.

Illustrations: Bob Hines

Table of Contents

The Service’s Legacy of Conserving Migratory Waterfowl Habitat	2
The Migratory Bird Conservation Commission	3
The Migratory Bird Conservation Fund	4
MBCF Approvals for Fiscal Year 2014.....	5
MBCF Land Acquisitions for Fiscal Year 2014	6
National Wildlife Refuge System: New Boundary Addition Approvals for Fiscal Year 2014	9
Boundary Addition Approvals and Maps.....	10
National Migratory Bird Refuges and Waterfowl Production Areas	18
Notes on Tables 1 and 2.....	18
National Migratory Bird Refuge Areas Map	19
Table 1. National Migratory Bird Refuges	20
Wetland Management Districts Map	29
Table 2. Waterfowl Production Area by State	30
North American Wetlands Conservation Fund: Summary of MBCC Approvals for Fiscal Year 2014	36
Table 3. U.S. Wetlands Conservation Standard Grants Proposals	37
Table 4. U.S. Wetlands Conservation Small Grant Proposals.....	39
Table 5. Canadian Wetlands Conservation Proposals	40
Table 6. Mexican Wetlands Conservation Proposals	41
Membership of the Migratory Bird Conservation Commission	42

The Service's Legacy of Conserving Migratory Waterfowl Habitat

For more than 80 years, the Federal Duck Stamp Program and the Migratory Bird Conservation Program have helped secure key habitats to sustain migratory bird populations. They protect wetlands, help dissipate storm water runoff, purify water supplies, and store flood water. As we look forward to the continuing conservation of these critical resources, we can find inspiration in these programs' extraordinary history of success.

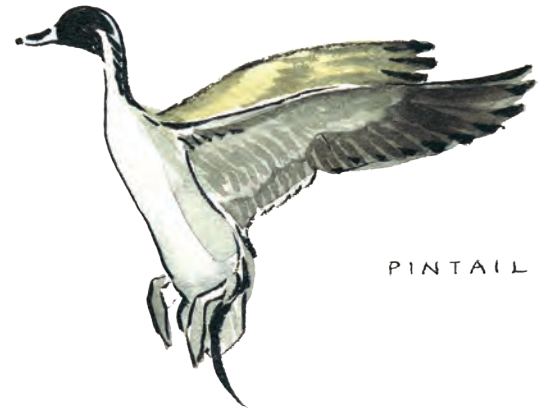
At the turn of the 20th century, overeager hunters and the commercial demand for meat and feathers had decimated waterfowl populations. At the same time, periodic droughts caused wetlands and other valuable waterfowl habitat to disappear. In the late 1920s, conservationists, hunters, and government officials worked together to create the Migratory Bird Conservation Act, which Congress passed in 1929. This landmark legislation authorized the Federal government to acquire and permanently protect wetlands for waterfowl. It also created the Migratory Bird Conservation Commission—composed of Federal and State officials—to consider and approve proposals for land acquisition.

Although the Act gave the Federal Government authority to create migratory bird refuges, it did not provide a permanent source of acquisition funding. This problem was addressed in the 1930s when President Franklin D. Roosevelt appointed Jay N. “Ding” Darling, a nationally known wildlife conservationist and political cartoonist, to serve as the Chief of the Bureau of Biological Survey. Darling was instrumental in the creation of a stamp, to be purchased by all waterfowl hunters, that would generate funds to pay for the acquisition of waterfowl habitat. In 1934, Congress passed the Migratory Bird Hunting and Conservation Stamp Act, which requires all hunters older than 16 to purchase and possess a Federal Duck Stamp while hunting waterfowl. Revenues from Duck Stamp sales are now deposited in the Migratory Bird Conservation Fund. The fund also includes import duties collected on arms and ammunition, receipts from permits for rights-of-way across refuge lands, and

any appropriations from the Wetlands Loan Act, which Congress authorized in 1961 as an advance of funds against future revenues from the sale of Duck Stamps.

Since 1934, the Service has spent more than one billion Migratory Bird Conservation Fund dollars to permanently protect more than five million acres of important waterfowl habitat, including more than three million acres of waterfowl production areas in the U.S. Prairie Pothole Region. In 2014 alone, the Service used close to \$59 million in funds from the Migratory Bird Conservation Fund to purchase, lease, or protect via easement more than 10,000 acres of waterfowl habitat at migratory bird refuges and nearly 44,000 acres in the Prairie Pothole Region.

Today, as in the past, the Federal Duck Stamp Program and Migratory Bird Conservation Program depend on the support of people who understand and connect with our natural world—people who understand the importance of our wildlife resources and take action. What can you do? Buy a Federal Duck Stamp. Tell people how important Federal Duck Stamps are to ensuring healthy populations of all migratory birds and other wildlife. For more information, visit our Federal Duck Stamp Web site <www.fws.gov/duckstamps/> or our Division of Realty Web site <www.fws.gov/refuges/realty/>.



PINTAIL

The Migratory Bird Conservation Commission

Section 2 of the Migratory Bird Conservation Act of 1929 established the Migratory Bird Conservation Commission. It reads as follows:

Section 2, as amended. A commission to be known as the Migratory Bird Conservation Commission, consisting of the Secretary of the Interior, as chairman, the Administrator of the Environmental Protection Agency, the Secretary of Agriculture, and two Members of the Senate, to be selected by the President of the Senate, and two Members of the House of Representatives to be selected by the Speaker; is created and authorized to consider and pass upon any area of land, water, or land and water that may be recommended by the Secretary of the Interior for purchase or rental under this subchapter; and to fix the price or prices at which such area may be purchased or rented; and no purchase or rental shall be made of any such area until it has been duly approved for purchase or rental by said commission. Any Member of the House of Representatives who is a

member of the commission, if reelected to the succeeding Congress, may serve on the commission notwithstanding the expiration of a Congress. Any vacancy on the commission shall be filled in the same manner as the original appointment. The ranking officer of the branch or department of a State to which is committed the administration of its game laws, or his authorized representative, and in a State having no such branch or department, the governor thereof, or his authorized representative, shall be a member ex officio of said commission for the purpose of considering and voting on all questions relating to the acquisition, under this subchapter, of areas in his State. For purposes of this subchapter, the purchase or rental of any area of land, water, or land and water includes the purchase or rental of any interest in any such area of land, water, or land and water.

Additional Act: In 1989, the Commission acquired the additional responsibility of approving project funding under the North American Wetlands Conservation Act. This Act provides Federal funding to encourage partnerships to protect, enhance, restore, and

manage wetlands and other habitats for migratory birds and other fish and wildlife. The North American Wetlands Conservation Council, which was created by the legislation, submits project recommendations to the Commission for funding approval.

2014 Membership

Hon. Sally Jewell
Secretary of the Interior; Chairman

Hon. Mark Pryor
Senator from Arkansas

Hon. Tom Vilsack
Secretary of Agriculture

Hon. John D. Dingell
Representative from Michigan

Hon. Gina McCarthy
Administrator, Environmental Protection Agency

Hon. Robert J. Wittman
Representative from Virginia

Hon. Thad Cochran
Senator from Mississippi

A Eric Alvarez
Secretary to the Commission
Telephone: 703/358-1716



BLUE-WINGED
TEAL

The Migratory Bird Conservation Fund

The Migratory Bird Hunting and Conservation Stamp Act of March 18, 1934 (Duck Stamp Act), created the Migratory Bird Conservation Fund (MBCF) to provide the Department of the Interior with monies to acquire migratory bird habitat.

There are three major sources of funds deposited into the MBCF account. The most well-known source is the revenue received from the sale of Migratory Bird Hunting and Conservation Stamps, commonly known as Duck Stamps, as provided for under the Duck Stamp Act. The other two major sources include appropriations authorized by the Wetlands Loan Act of October 4, 1961, as amended, and import duties collected on arms and ammunition, as provided for under the Emergency Wetlands Resources Act of 1986.

The MBCF finances two Service land acquisition programs that are administered by the Division of Realty. The first program acquires waterfowl habitat in major migratory bird conservation areas under the authority of the Migratory Bird Conservation Act of 1929. The second program acquires small natural wetlands, grasslands, and interests, known as Waterfowl Production Areas, under the authority of the Duck Stamp Act. Waterfowl Production Areas are located primarily in the Prairie Pothole Region of the upper Midwest of the United States.

A total of \$66,502,810 was available for obligation from the MBCF during fiscal year 2014. Collections included an additional \$3,405,108 in reverted Federal Aid Wildlife Restoration grant money. Sequestration claimed \$4,956,526 from MBCF collections.

Disbursements for all MBCF land acquisition functions during the fiscal year totaled \$76,267,913, which included \$69,119 in disbursements from prior year obligations. The disbursement total includes \$21,045,029 for the acquisition of land and interests in land totaling 10,552 acres at major migratory bird conservation areas, and \$53,173,190 for land and interests in land totaling 49,943 acres at Waterfowl Production Areas. Printing expenses for the Federal Duck Stamp and other support costs make up the remaining \$2,049,693.



MBCF Approvals for Fiscal Year 2014
(fee unless otherwise indicated)

Area Approvals - Boundary Additions			
<i>Area</i>	<i>State</i>	<i>Approval Date</i>	<i>Acres</i>
Anahuac NWR	Texas	03/26/14	1,227
San Bernard NWR	Texas	03/26/14	30
Trinity River NWR	Texas	03/26/14	234
Trinity River NWR	Texas	09/11/14	476
Upper Ouachita NWR	Louisiana	03/26/14	18,711
Total			20,678

Price Approvals			
<i>Area</i>	<i>State</i>	<i>Approval Date</i>	<i>Acres</i>
Anahuac NWR	Texas	03/26/14	1,227
Black Bayou Lake NWR	Louisiana	09/11/14	804
Blackwater NWR	Maryland	09/11/14	154
San Bernard NWR	Texas	03/26/14	30
Trinity River NWR	Texas	03/26/14	234
Trinity River NWR	Texas	09/11/14	476
Tulare Basin WMA (easement)	California	03/26/14	305
Turnbull NWR	Washington	09/11/14	303
Upper Ouachita NWR	Louisiana	03/26/14	3,276
Total			6,809

Grand Total			27,487
--------------------	--	--	---------------

**MBCF Land Acquisitions for
Fiscal Year 2014**

*Land Contracted for Purchase,
Permanent Easement, or Lease*

Refuge Acquisition Program

Fee Title Acquisitions

<i>Area</i>	<i>State</i>	<i>Acres</i>	<i>Cost</i>
Anahuac NWR	Texas	1,114	\$1,562,690
Bear River MBR	Utah	403	\$1,209,600
Blackwater NWR	Maryland	163	\$811,313
San Bernard NWR	Texas	2,191	\$2,007,132
Tallahatchie NWR (land exchange)	Mississippi	165	\$0
Trinity River NWR	Texas	275	\$308,700
Turnbull NWR	Washington	405	\$547,000
Upper Ouachita NWR	Louisiana	4,234	\$4,950,071
Waccamaw NWR	South Carolina	1,350	\$2,029,000
Total		10,301	\$13,425,506

Permanent Easement Acquisitions

<i>Area</i>	<i>State</i>	<i>Acres</i>	<i>Cost</i>
Grasslands WMA	California	211	\$404,393
Tulare Basin WMA	California	345	\$856,000
Total		556	\$1,260,393

Leases

<i>Area</i>	<i>State</i>	<i>Acres</i>	<i>Cost</i>
Dahomey NWR	Mississippi	260	\$9,100
Halfbreed Lake NWR	Montana	640	\$1,512
Lacassine NWR	Louisiana	640	\$25,600
Ouray NWR	Utah	1,484	\$8,870
Panther Swamp NWR	Mississippi	640	\$19,200
Red Rock Lakes NWR	Montana	6,314	\$21,998
St. Catherine Creek NWR	Mississippi	502	\$15,566
Total		10,481	\$101,846

Refuge Acquisition Program Net Total **21,338** **\$14,787,745**

Note: Through an equal value land-for-land exchange, the Service acquired 165 acres at Tallahatchie NWR and divested 307 acres at Coldwater River NWR which were previously acquired with MBCF funds.

**MBCF Land Acquisitions for
Fiscal Year 2014, continued**
*Land Contracted for Purchase,
Permanent Easement, or Lease*

Small Wetlands Acquisition Program

Waterfowl Production Areas

Permanent Easement Acquisitions

<i>State</i>	<i>Acres</i>	<i>Cost</i>
Minnesota	974	\$2,208,775
Montana	2,555	\$498,094
North Dakota	10,839	\$14,306,125
South Dakota	28,467	\$22,979,663
Total	42,834	\$39,992,657

Fee Title Acquisitions

<i>State</i>	<i>Acres</i>	<i>Cost</i>
Iowa	315	\$2,307,400
Minnesota	289	\$785,800
Montana	242	\$317,000
North Dakota	263	\$689,000
Total	1,109	\$4,099,200

Leases

<i>State</i>	<i>Acres</i>	<i>Cost</i>
Montana	1,560	\$4,203
Total	1,560	\$4,203

Small Wetlands Acquisition Program Net Total **45,503** **\$44,096,060**

Grand Total **66,841** **\$58,883,806**

CANADA
GOOSE



National Wildlife Refuge System: New Boundary Addition Approvals for Fiscal Year 2014

Boundary Addition Approvals

Anahuac National Wildlife Refuge
Chambers County, Texas

San Bernard National Wildlife Refuge
Brazoria County, Texas

Trinity River National Wildlife Refuge
Liberty County, Texas

Upper Ouachita National Wildlife Refuge
Union and Morehouse Parishes, Louisiana



Anahuac National Wildlife Refuge

Chambers County, Texas

On March 26, 2014, the Migratory Bird Conservation Commission granted boundary and price approval for the fee title acquisition of 1,227 acres at the Anahuac National Wildlife Refuge.

Anahuac NWR is located in Chambers County, Texas, approximately 20 miles southeast of the town of Anahuac. Meandering bayous on the Refuge cut through ancient flood plains, creating vast expanses of coastal marsh and prairie bordering Galveston Bay, which

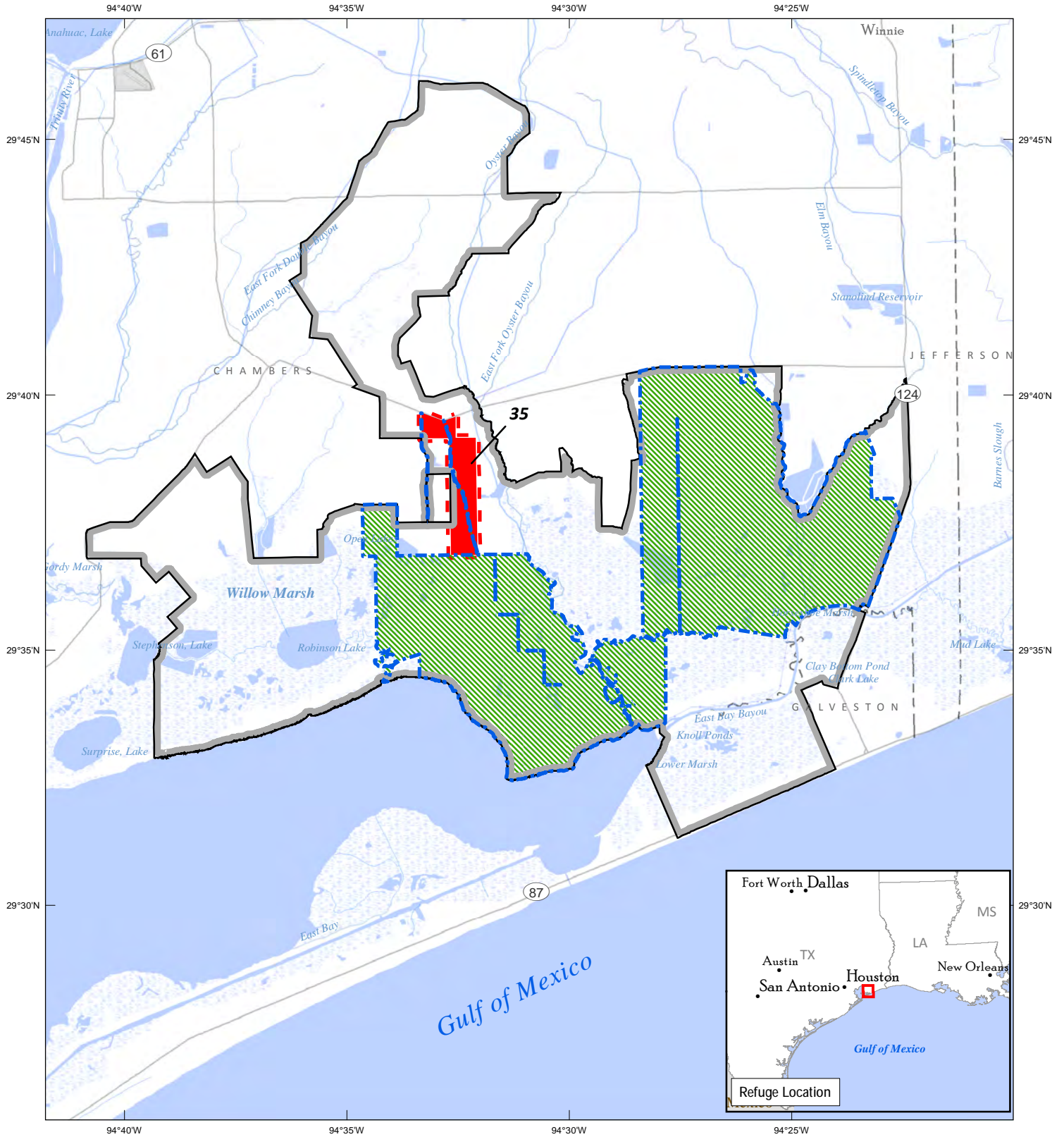
provide important habitat for migrating, wintering, and breeding waterfowl, including blue and green-winged teal, mottled duck, gadwall, northern pintail, and northern shoveler. The Refuge provides some of the best waterfowl hunting opportunities in southeast Texas, with 40 percent of the refuge open to waterfowl hunting.

The 1,227.31 acres approved for acquisition contain marsh and prairie habitat. The Service will manage the

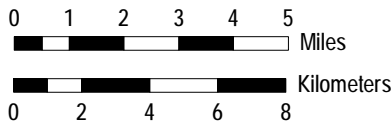
tract to improve waterfowl habitat through water management, controlled grazing, prescribed burning, and moist soil management. The Service also plans to offer compatible public use such as hunting, fishing, wildlife observation, and environmental education and interpretation.



Anahuac National Wildlife Refuge



PRODUCED IN THE DIVISION OF REALTY
 ALBUQUERQUE, NEW MEXICO
 LAND STATUS CURRENT TO 1/10/13
 BASE MAP SOURCE: USA BASE MAPS
 MAP PROJECTION: GCS NORTH AMERICAN
 1983
 MAP DATE: 3/4/2014



- MBCC Approved Boundary
 - Boundary to be Approved
 - Approved Acquisition Boundary
 - Previously Acquired - Fee
 - For Approval - Fee
- 3/26/2014 Date of MBCC Meeting



San Bernard National Wildlife Refuge

Brazoria County, Texas

On March 26, 2014, the Migratory Bird Conservation Commission granted boundary and price approval for the fee title acquisition of 30.11 acres at the Austin's Woods Unit of the San Bernard National Wildlife Refuge.

The Austin's Woods Unit is located 50 miles south of Houston, Texas. It is a productive and valuable wetland complex that provides habitat for migrating, wintering, and resident waterfowl, wading birds, neo-tropical migratory

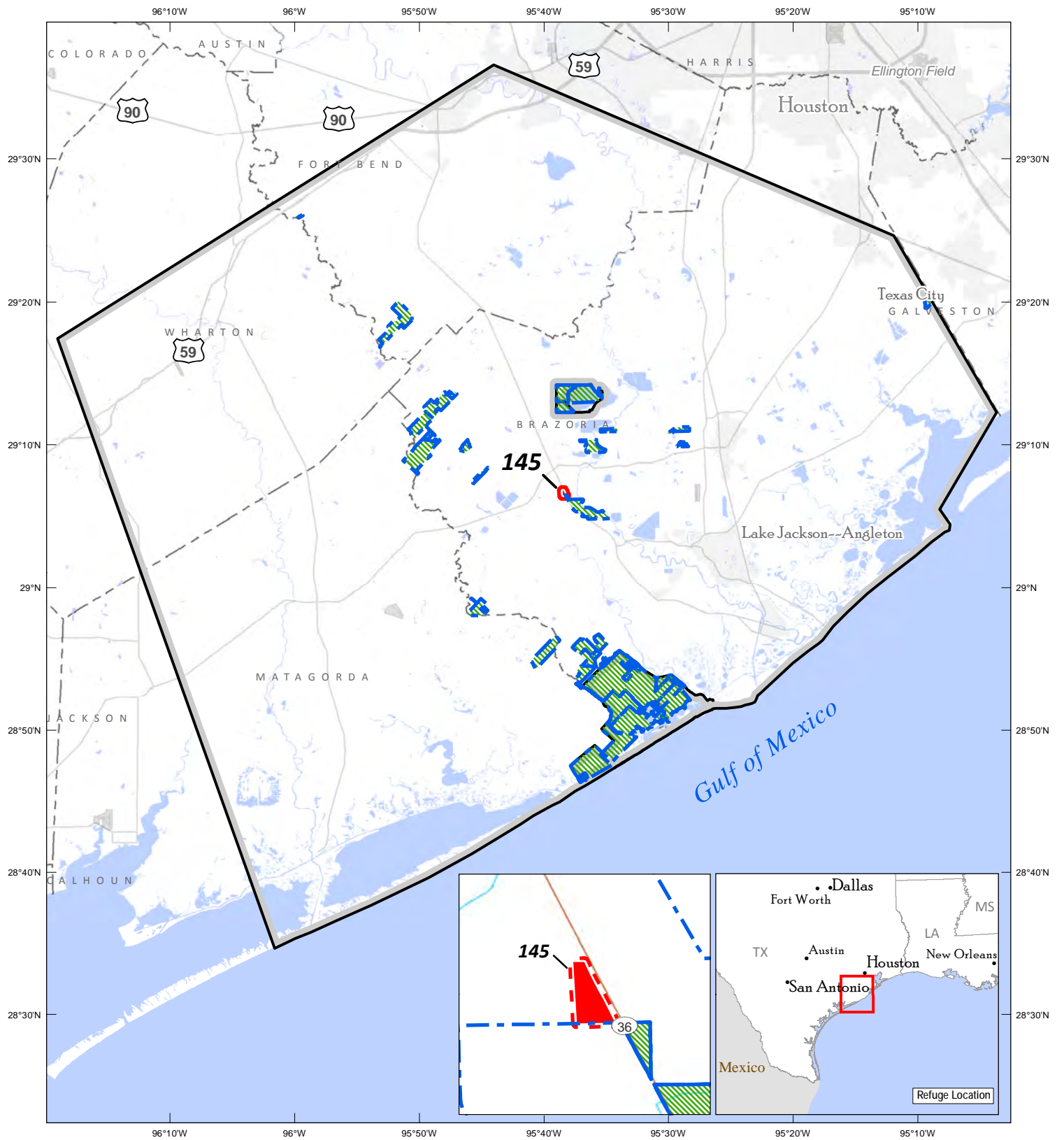
birds, and other wetland-dependent wildlife species. Thousands of waterfowl winter in the area, including mottled ducks, mallards, northern pintails, gadwalls, widgeons, northern shovelers, blue- and green-winged teal, black-bellied whistling ducks, and ruddy ducks.

The acquired tract is located in the Central part of the Austin's Woods Unit. The Service will manage the land as habitat for waterfowl, wading birds, neo-tropical migrants, and other wildlife.

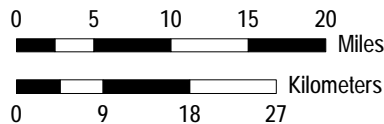
These acquisitions further the objectives of the North American Waterfowl Management Plan in assuring the future of the nation's waterfowl resource.



San Bernard National Wildlife Refuge



PRODUCED IN THE DIVISION OF REALTY,
 CADASTRAL SURVEYING & MAPPING SECTION
 ALBUQUERQUE, NM
 LAND STATUS CURRENT TO: 2/24/14
 MAP DATE: 2/24/14
 BASEMAP: ESRI / DOE RENEWABLE
 ENERGY ATLAS
 WEB MERCATOR PROJECTION NAD 83



- MBCC Approved Boundary
 - Boundary to be Approved
 - Focus Area Boundary
 - Previously Acquired - Fee
 - For Approval - Fee
- 3/26/2014 Date of MBCC Meeting



Trinity River National Wildlife Refuge

Liberty County, Texas

During Fiscal Year 2014, the Migratory Bird Conservation Commission granted boundary and price approval for the fee title acquisition of 710.31 acres at Trinity River National Wildlife Refuge. This included Commission boundary and price approvals of 234.38 acres in March, and 475.93 acres in September.

Trinity River NWR is located 45 miles northeast of Houston in Liberty County, Texas. The Refuge protects important remnant bottomland hardwood and associated habitats for migrating,

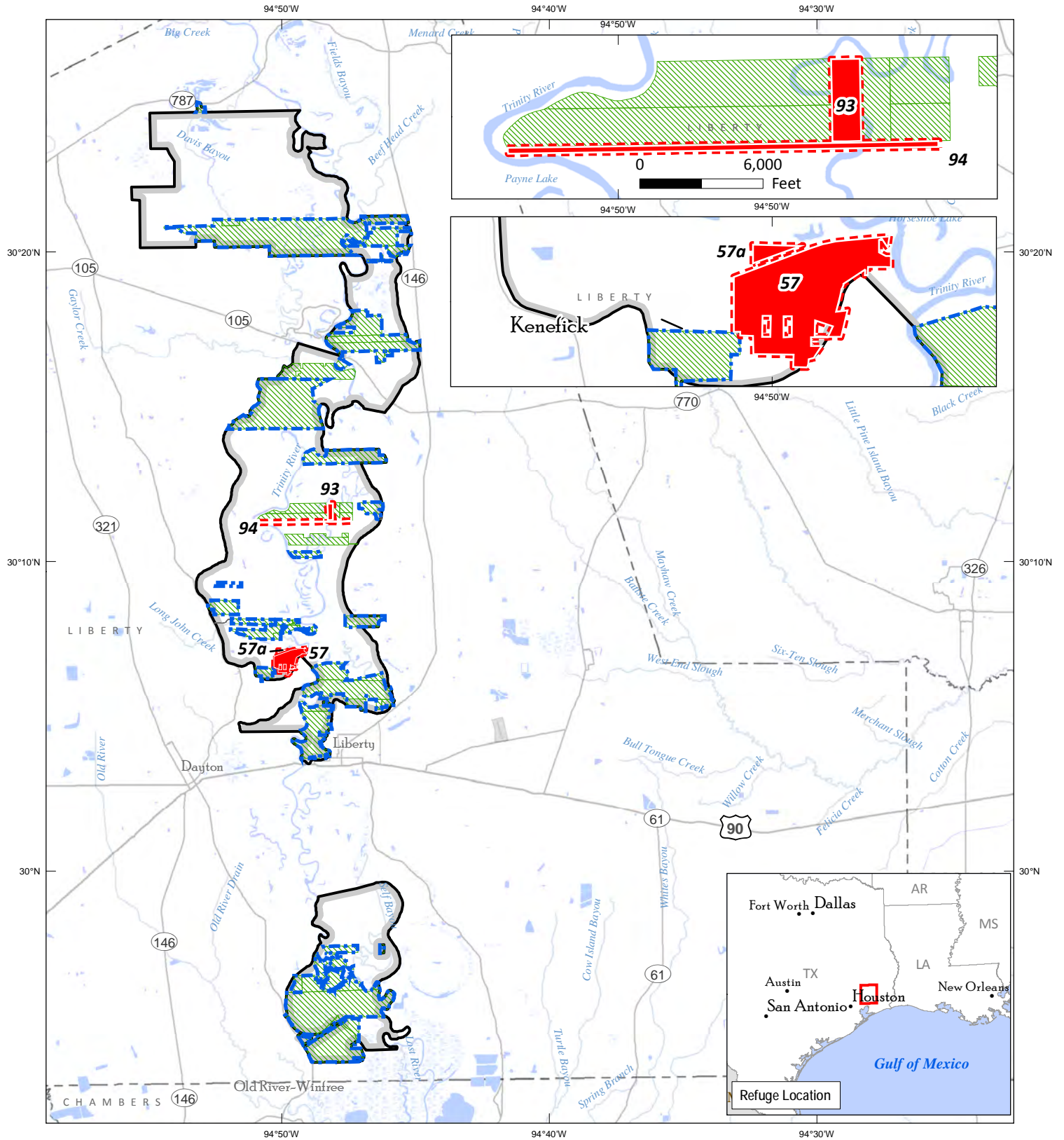
wintering, and breeding waterfowl, including wood duck, mallard, gadwall, American widgeon, green- and blue-winged teal, and mottled duck. Mature cavity trees provide important nesting habitat for wood ducks and black-bellied whistling ducks.

The 710.31 acres approved for acquisition contain flood-prone bottomland hardwood habitat. The Service will manage the tract to protect important waterfowl habitat in the Trinity River floodplain. The Service also plans to offer

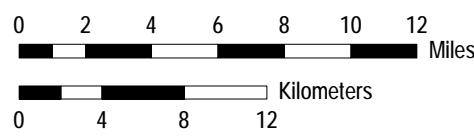
compatible public use such as hunting, wildlife observation, and environmental education and interpretation.



Trinity River National Wildlife Refuge



PRODUCED IN THE DIVISION OF REALTY
 ARLINGTON, VIRGINIA
 LAND STATUS CURRENT TO: 8/19/14
 MAP DATE: 1/20/2015
 BASEMAP: ESRI / DOE RENEWABLE ENERGY ATLAS
 WEB MERCATOR PROJECTION
 NAD 83



- MBCC Approved Boundary
- Boundary to be Approved
- Approved Acquisition Boundary
- Previously Acquired - Fee
- Previously Acquired - Easement
- For Approval - Fee
- For Approval - Easement



Upper Ouachita National Wildlife Refuge

Union and Morehouse Parishes, Louisiana

On March 26, 2014, the Migratory Bird Conservation Commission granted boundary approval for 18,711 acres at the Upper Ouachita National Wildlife Refuge, and price approval for the fee title acquisition of 3,276 acres.

The Upper Ouachita NWR is located in Union and Morehouse Parishes, Louisiana, approximately 29 miles north of Monroe, and encompasses more than 50,000 acres of bottomland hardwood forest, pine and pine/hardwood mixed forests, shrub-scrub habitats, moist soil

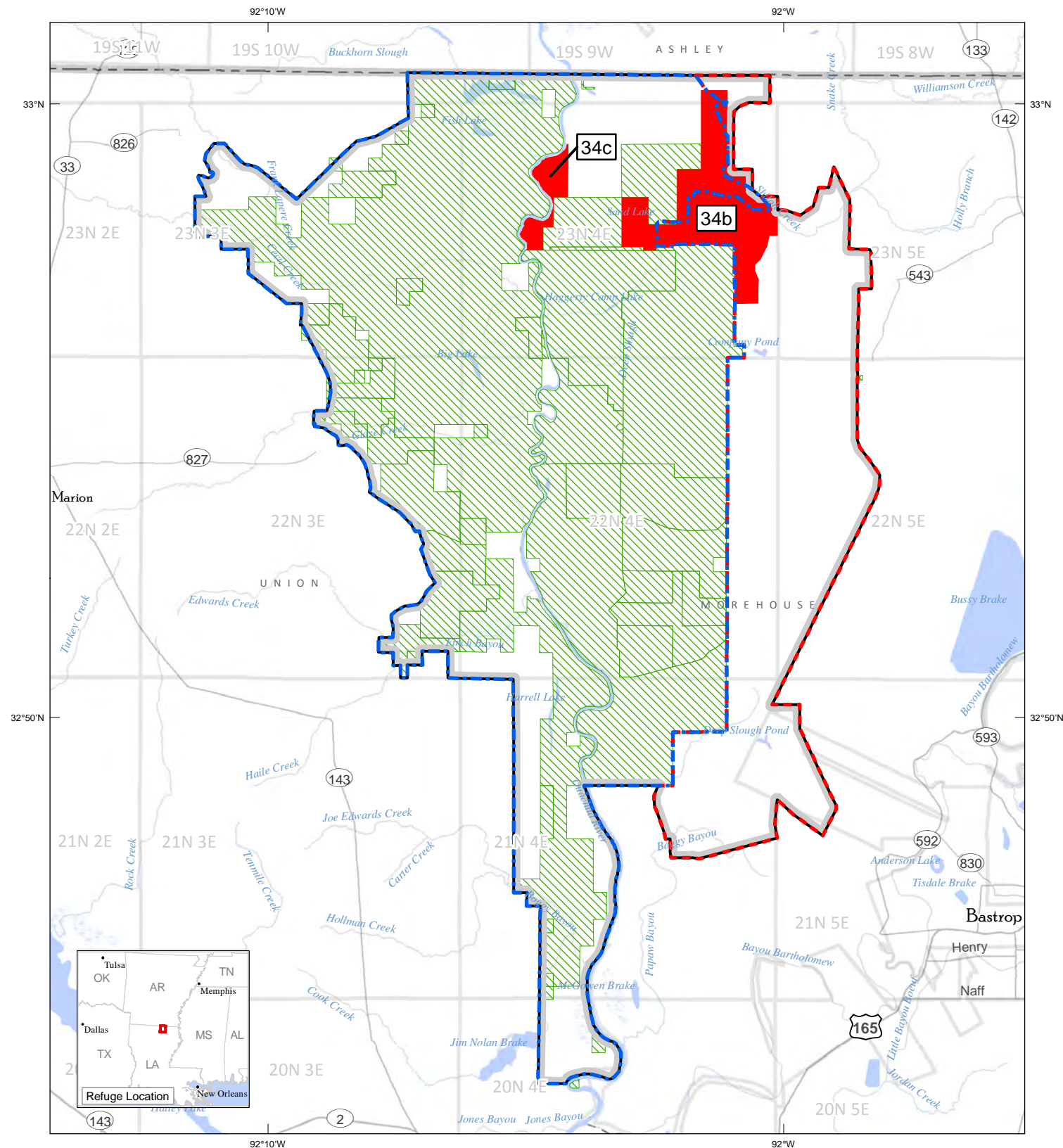
areas, and open water. The purposes of the Refuge are to preserve wintering habitat for mallards, northern pintails, and wood ducks, and to contribute to the goals of the Lower Mississippi River Valley Joint Venture, the North American Waterfowl Management Plan, and the Red-cockaded Woodpecker Recovery Plan.

The 3,276 acres approved for acquisition include a large portion of the Refuge's last remaining large inholding east of the Ouachita River. The property's

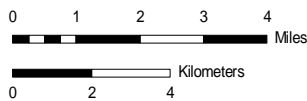
bottomland hardwood forest habitats support thousands of wintering waterfowl, including mottled ducks, mallards, northern pintails, gadwalls, wigeons, northern shovelers, blue- and green-winged teal, black-bellied whistling ducks, and ruddy ducks. The Service will manage the property to protect habitat for waterfowl and other wildlife, and to provide compatible public use such as hunting, fishing, wildlife observation, and environmental education and interpretation.



Upper Ouachita National Wildlife Refuge



PRODUCED IN THE DIVISION OF REALTY
 ATLANTA, GEORGIA
 LAND STATUS CURRENT TO: 2/6/14
 MAP DATE: 3/6/2014
 BASEMAP: ESRI / DOE RENEWABLE ENERGY ATLAS
 WEB MERCATOR PROJECTION
 NAD 83



3/26/2014 Date of MBCC Meeting

- MBCC Approved Boundary
- Boundary to be Approved
- Approved Acquisition Boundary
- Previously Acquired - Fee
- For Approval - Fee



National Migratory Bird Refuges and Waterfowl Production Areas

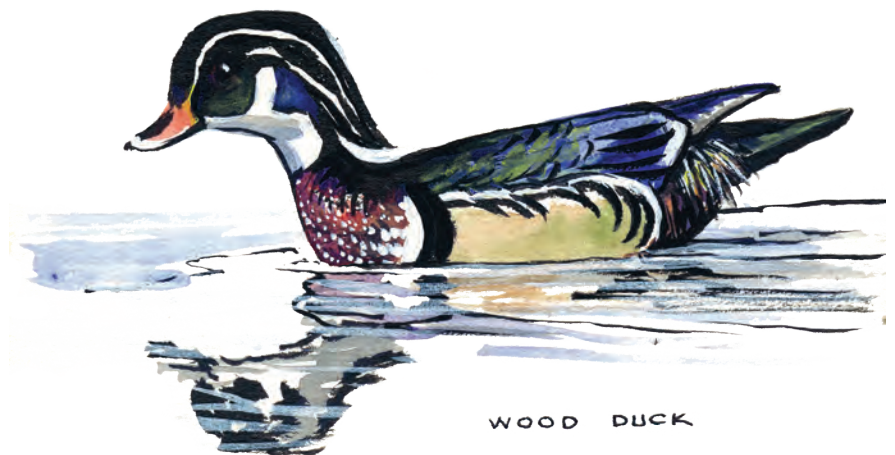
The information contained in this report includes those acquisitions and dispositions of land and interests therein that are purchased with Migratory Bird Conservation Fund monies or acquired under the authority of the Migratory Bird Conservation Act. It also includes other migratory bird areas such as those that are transferred to the Fish and Wildlife Service under the authority of Public Law 80-537 to carry out a migratory bird management program.

Notes on Tables 1 and 2

In an ongoing effort to improve data quality, the figures in Tables 1 and 2 may show minor changes from previous annual reports. Lands in which the Service previously acquired a less-than-fee interest (leases and easements) may be purchased in fee during the year, so the number of easement or lease acres will show a decrease and the number of purchased acres will show an increase. The acreage appearing in the Approvals section of this report will not appear in Tables 1 or 2 until after the Service

acquires the tracts and expends the funds. Also, a newly approved refuge will not appear on Table 1 until the Service acquires the tract(s).

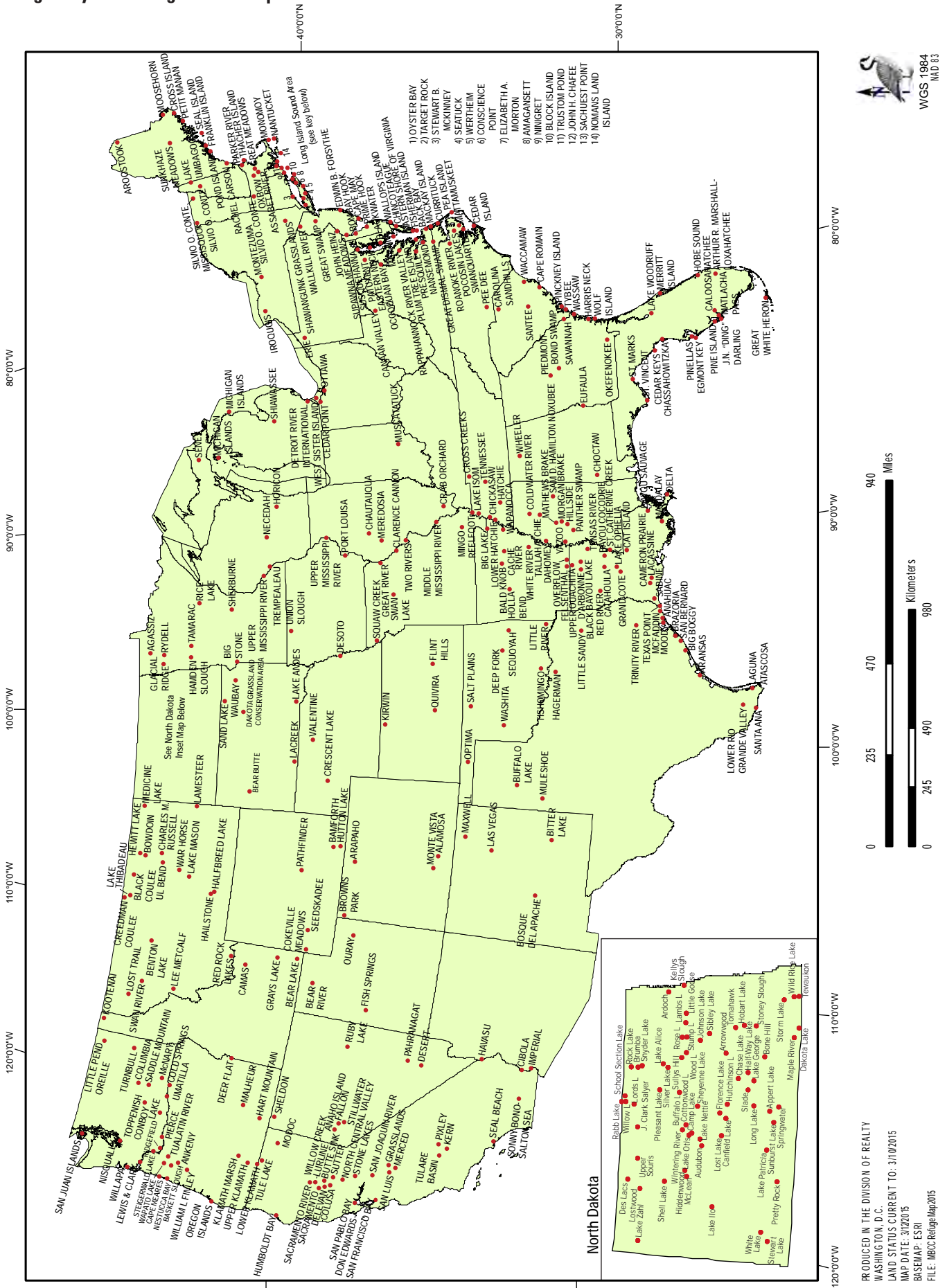
Refer to the Annual Report of Lands of the U.S. Fish and Wildlife Service for information on all lands and interests managed by the Service. This report is available from the U.S. Fish and Wildlife Service, Division of Realty at <www.fws.gov/refuges/realty>, or by calling 703/358-1713.



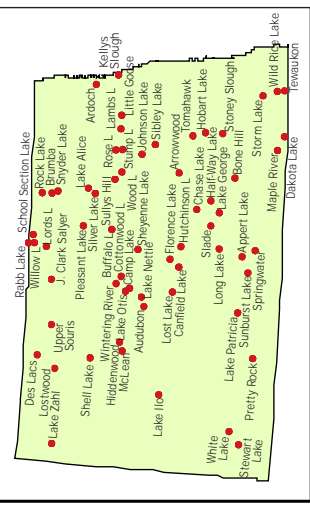
National Migratory Bird Refuge Areas Map



WGS 1984
MAD 83



North Dakota



PRODUCED IN THE DIVISION OF REALTY
WASHINGTON, D.C.
LAND STATUS CURRENT TO: 3/10/2015
MAP DATE: 3/10/2015
BASEMAP: ESRI
FILE: MBCC Refuge Map 2015

Table 1. National Migratory Bird Refuges

State and Unit	FISCAL YEAR MBCF ACQUISITION				CUMULATIVE TOTALS AT END OF FISCAL YEAR					
	Purchased		Easement or Lease		MBCF				All Other Acres	Total Acres
	Acres	Cost	Acres	Cost	Purchased		Easement or Lease			
				Acres	Cost	Acres	Cost			
Alabama										
Choctaw	0.00	\$0.00	0.00	\$0.00	0.00	\$0.00	0.00	\$0.00	4,218.00	4,218.00
Eufaula	0.00	\$0.00	0.00	\$0.00	0.00	\$0.00	0.00	\$0.00	7,953.19	(1) 7,953.19
FSA Interest AL *	0.00	\$0.00	0.00	\$0.00	0.00	\$0.00	0.00	\$0.00	842.64	** 842.64
Wheeler	0.00	\$0.00	0.00	\$0.00	0.00	\$0.00	0.00	\$0.00	34,430.66	34,430.66
State Total 3	0.00	\$0.00	0.00	\$0.00	0.00	\$0.00	0.00	\$0.00	47,444.49	47,444.49
Arizona										
Cibola	0.00	\$0.00	0.00	\$0.00	0.00	\$0.00	0.00	\$0.00	13,199.34	(2)13,199.34
Havasu	0.00	\$0.00	0.00	\$0.00	0.00	\$0.00	0.00	\$0.00	30,279.82	(2)30,279.82
Imperial	0.00	\$0.00	0.00	\$0.00	0.00	\$0.00	0.00	\$0.00	17,809.76	(2)17,809.76
State Total 3	0.00	\$0.00	0.00	\$0.00	0.00	\$0.00	0.00	\$0.00	61,288.92	61,288.92
Arkansas										
Bald Knob	0.00	\$0.00	0.00	\$0.00	4,748.40	\$3,427,000.00	0.00	\$0.00	10,273.95	15,022.35
Big Lake	0.00	\$0.00	0.00	\$0.00	562.91	\$31,854.69	0.25	\$3.00	10,483.79	11,046.95
Cache River	0.00	\$0.00	0.00	\$0.00	49,180.98	\$48,351,291.92	0.00	\$0.00	19,812.42	68,993.40
Dale Bumpers White River	0.00	\$0.00	0.00	\$0.00	10,684.67	\$5,923,070.37	252.87	\$22.00	149,220.71	160,158.25
Felsenthal	0.00	\$0.00	0.00	\$0.00	0.00	\$0.00	0.00	\$0.00	64,902.14	64,902.14
FSA Interest AR *	0.00	\$0.00	0.00	\$0.00	0.00	\$0.00	0.00	\$0.00	3,461.90	** 3,461.90
Holla Bend	0.00	\$0.00	0.00	\$0.00	690.45	\$336,903.00	0.00	\$5,175.00	5,608.58	6,299.03
Overflow	0.00	\$0.00	0.00	\$0.00	13,416.75	\$10,943,020.50	9.60	\$0.00	0.00	13,426.35
Wapanocca	0.00	\$0.00	0.00	\$0.00	5,629.25	\$1,528,416.00	0.00	\$0.00	0.00	5,629.25
State Total 8	0.00	\$0.00	0.00	\$0.00	84,913.41	\$70,541,556.48	262.72	\$5,200.00	263,763.49	348,939.62
California										
Butte Sink	0.00	\$0.00	0.00	\$0.00	514.98	\$1,650,700.00	10,310.64	\$12,816,903.00	217.88	11,043.50
Cibola *	0.00	\$0.00	0.00	\$0.00	0.00	\$0.00	0.00	\$0.00	5,245.33	(3) 5,245.33
Colusa	0.00	\$0.00	0.00	\$0.00	2,384.74	\$107,313.30	0.00	\$0.00	1,655.24	4,039.98
Delevan	0.00	\$0.00	0.00	\$0.00	5,796.54	\$2,345,739.00	0.00	\$175,000.00	0.00	5,796.54
Don Edwards San Fran. Bay	0.00	\$0.00	0.00	\$0.00	0.00	\$0.00	0.00	\$0.00	29,352.51	29,352.51
FSA Interest CA *	0.00	\$0.00	0.00	\$0.00	0.00	\$0.00	0.00	\$0.00	6,673.24	** 6,673.24
Grasslands	0.00	\$0.00	211.40	\$404,393.00	6,442.28	\$9,158,896.00	73,586.20	\$41,664,814.00	13,866.17	93,894.65
Havasu *	0.00	\$0.00	0.00	\$0.00	0.00	\$0.00	0.00	\$0.00	7,235.34	(3) 7,235.34
Humboldt Bay	0.00	\$0.00	0.00	\$0.00	2,884.34	\$6,492,650.00	0.00	\$0.00	667.55	3,551.89
Imperial *	0.00	\$0.00	0.00	\$0.00	0.00	\$0.00	0.00	\$0.00	8,198.19	(3) 8,198.19
Kern	0.00	\$0.00	0.00	\$0.00	10,543.86	\$579,912.00	0.00	\$0.00	705.31	11,249.17
Lower Klamath	0.00	\$0.00	0.00	\$0.00	4,530.53	\$3,390,123.00	0.00	\$0.00	39,764.02	(4)44,294.55
Merced	0.00	\$0.00	0.00	\$0.00	3,803.82	\$2,180,000.00	0.00	\$0.00	1.76	3,805.58
Modoc	0.00	\$0.00	0.00	\$0.00	5,359.58	\$1,077,634.19	0.00	\$0.00	1,731.65	7,091.23
North Central Valley	0.00	\$0.00	0.00	\$0.00	1,033.28	\$4,445,531.00	9,446.32	\$14,729,148.00	7,365.52	17,845.12
Pixley	0.00	\$0.00	0.00	\$0.00	0.00	\$0.00	0.00	\$0.00	7,282.91	7,282.91
Sacramento	0.00	\$0.00	0.00	\$0.00	10,775.61	\$150,498.00	0.00	\$0.00	43.39	10,819.00
Sacramento River	0.00	\$0.00	0.00	\$0.00	126.40	\$145,000.00	0.00	\$0.00	11,624.65	11,751.05
San Joaquin River	0.00	\$0.00	0.00	\$0.00	1,239.18	\$7,030,819.00	366.55	\$3,576,435.00	9,781.43	11,387.16
San Luis	0.00	\$0.00	0.00	\$0.00	7,422.41	\$2,171,055.00	703.00	\$2,284,000.00	10,337.00	18,462.41
San Pablo Bay	0.00	\$0.00	0.00	\$0.00	248.00	\$243,400.00	0.00	\$0.00	17,994.82	18,242.82
Seal Beach	0.00	\$0.00	0.00	\$0.00	0.00	\$0.00	0.00	\$0.00	910.71	910.71
Sonny Bono Salton Sea	0.00	\$0.00	0.00	\$0.00	9,342.14	\$294,461.80	637.00	\$1,089.27	27,679.73	37,658.87
Stone Lakes	0.00	\$0.00	0.00	\$0.00	214.61	\$1,240,000.00	138.56	\$365,800.00	6,188.40	6,541.57
Sutter	0.00	\$0.00	0.00	\$0.00	2,590.16	\$291,281.80	0.00	\$3,850.00	0.00	2,590.16
Tulare Basin	0.00	\$0.00	344.80	\$856,000.00	0.00	\$0.00	3,905.30	\$7,502,518.00	89.44	3,994.74
Tule Lake	0.00	\$0.00	0.00	\$0.00	0.00	\$0.00	0.00	\$0.00	39,116.58	39,116.58
Willow Creek-Lurline	0.00	\$0.00	0.00	\$0.00	0.00	\$0.00	5,786.70	\$7,173,433.00	77.41	5,864.11
State Total 24	0.00	\$0.00	556.20	\$1,260,393.00	75,252.46	\$42,995,014.09	104,880.27	\$90,292,990.27	253,806.18	433,938.91
Colorado										
Alamosa	0.00	\$0.00	0.00	\$0.00	10,904.78	\$2,377,463.16	0.00	\$24,035.90	1,121.59	12,026.37
Arapaho	0.00	\$0.00	0.00	\$0.00	17,811.33	\$4,798,286.00	23.23	\$35,358.66	7,686.84	25,521.40
Browns Park	0.00	\$0.00	0.00	\$0.00	5,275.63	\$614,976.00	0.00	\$68,118.76	6,874.25	12,149.88
FSA Interest CO *	0.00	\$0.00	0.00	\$0.00	0.00	\$0.00	0.00	\$0.00	1,206.64	** 1,206.64
Monte Vista	0.00	\$0.00	0.00	\$0.00	13,950.66	\$2,241,750.00	0.00	\$0.00	883.33	14,833.99
State Total 4	0.00	\$0.00	0.00	\$0.00	47,942.40	\$10,032,475.16	23.23	\$127,513.32	17,772.65	65,738.28
Connecticut										
Stewart B. McKinney	0.00	\$0.00	0.00	\$0.00	361.24	\$2,263,560.00	0.00	\$0.00	585.94	947.18
State Total 1	0.00	\$0.00	0.00	\$0.00	361.24	\$2,263,560.00	0.00	\$0.00	585.94	947.18

Table 1. National Migratory Bird Refuges

State and Unit	FISCAL YEAR MBCF ACQUISITION				CUMULATIVE TOTALS AT END OF FISCAL YEAR					
	Purchased		Easement or Lease		MBCF				All Other Acres	Total Acres
	Acres	Cost	Acres	Cost	Acres	Cost	Acres	Cost		
Delaware										
Bombay Hook	0.00	\$0.00	0.00	\$0.00	15,551.48	\$2,074,738.56	0.00	\$1.00	779.28	16,330.76
FSA Interest DE *	0.00	\$0.00	0.00	\$0.00	0.00	\$0.00	0.00	\$0.00	2.60	** 2.60
Prime Hook	0.00	\$0.00	0.00	\$0.00	8,285.70	\$3,735,464.16	79.19	\$5,346.20	1,797.93	10,162.82
State Total 2	0.00	\$0.00	0.00	\$0.00	23,837.18	\$5,810,202.72	79.19	\$5,347.20	2,579.81	26,496.18
Florida										
Arthur R. Marshall	0.00	\$0.00	0.00	\$0.00	2,549.77	\$118,511.97	0.00	\$0.00	141,404.00	143,953.77
Caloosahatchee	0.00	\$0.00	0.00	\$0.00	0.00	\$0.00	0.00	\$0.00	40.00	40.00
Cedar Keys	0.00	\$0.00	0.00	\$0.00	0.00	\$0.00	0.00	\$0.00	891.15	891.15
Chassahowitzka	0.00	\$0.00	0.00	\$0.00	22,556.82	\$267,529.26	0.00	\$0.00	8,286.09	30,842.91
Egmont Key	0.00	\$0.00	0.00	\$0.00	0.00	\$0.00	0.00	\$0.00	328.30	328.30
FSA Interest FL *	0.00	\$0.00	0.00	\$0.00	0.00	\$0.00	0.00	\$0.00	3,165.18	** 3,165.18
Great White Heron	0.00	\$0.00	0.00	\$0.00	1,326.54	\$906,195.00	0.00	\$0.00	116,395.99	117,722.53
Hobe Sound	0.00	\$0.00	0.00	\$0.00	0.00	\$0.00	0.00	\$0.00	1,027.13	1,027.13
J. N. Ding Darling	0.00	\$0.00	0.00	\$0.00	541.98	\$372,370.00	0.00	\$0.00	5,864.81	6,406.79
Lake Woodruff	0.00	\$0.00	0.00	\$0.00	18,413.39	\$1,340,310.75	0.00	\$0.00	2,745.63	21,159.02
Matlacha Pass	0.00	\$0.00	0.00	\$0.00	0.00	\$0.00	0.00	\$0.00	564.73	564.73
Merritt Island	0.00	\$0.00	0.00	\$0.00	0.00	\$0.00	0.00	\$0.00	139,196.47	139,196.47
Okefenokee	0.00	\$0.00	0.00	\$0.00	0.00	\$0.00	0.00	\$0.00	3,694.92	(1) 3,694.92
Pine Island	0.00	\$0.00	0.00	\$0.00	0.00	\$0.00	0.00	\$0.00	608.48	608.48
Pinellas	0.00	\$0.00	0.00	\$0.00	0.00	\$0.00	0.00	\$0.00	394.35	394.35
St. Marks	0.00	\$0.00	0.00	\$0.00	30,742.44	\$101,704.79	0.00	\$0.00	41,347.86	72,090.30
St. Vincent	0.00	\$0.00	0.00	\$0.00	12,358.20	\$2,035,000.00	0.00	\$0.00	135.66	12,493.86
State Total 16	0.00	\$0.00	0.00	\$0.00	88,489.14	\$5,141,621.77	0.00	\$0.00	466,090.75	554,579.89
Georgia										
Bond Swamp	0.00	\$0.00	0.00	\$0.00	256.41	\$1,000,000.00	0.00	\$0.00	6,625.90	6,882.31
Eufaula *	0.00	\$0.00	0.00	\$0.00	0.00	\$0.00	0.00	\$0.00	3,231.00	(5) 3,231.00
FSA Interest GA *	0.00	\$0.00	0.00	\$0.00	0.00	\$0.00	0.00	\$0.00	4,974.52	** 4,974.52
Harris Neck	0.00	\$0.00	0.00	\$0.00	0.00	\$0.00	0.00	\$0.00	2,822.68	2,822.68
Okefenokee *	0.00	\$0.00	0.00	\$0.00	345,208.87	\$867,318.12	0.00	\$0.00	54,425.58	(9)99,634.45
Piedmont	0.00	\$0.00	0.00	\$0.00	473.97	\$44,000.00	0.00	\$0.00	34,491.93	34,965.90
Savannah	0.00	\$0.00	0.00	\$0.00	8,013.39	\$1,705,352.40	0.00	\$0.00	6,150.09	(7)14,163.48
Wassaw	0.00	\$0.00	0.00	\$0.00	0.00	\$0.00	0.00	\$0.00	10,053.30	10,053.30
Wolf Island	0.00	\$0.00	0.00	\$0.00	4,587.82	\$120,813.52	0.00	\$0.00	538.00	5,125.82
State Total 6	0.00	\$0.00	0.00	\$0.00	358,540.46	\$3,737,484.04	0.00	\$0.00	123,313.00	481,853.46
Idaho										
Bear Lake	0.00	\$0.00	0.00	\$0.00	626.57	\$212,279.30	0.00	\$1.00	17,582.09	18,208.66
Camas	0.00	\$0.00	0.00	\$0.00	10,437.00	\$202,700.84	0.00	\$0.00	220.19	10,657.19
Deer Flat	0.00	\$0.00	0.00	\$0.00	242.89	\$26,415.50	0.00	\$0.00	11,172.06	(4)11,414.95
FSA Interest ID *	0.00	\$0.00	0.00	\$0.00	0.00	\$0.00	0.00	\$0.00	1,324.40	** 1,324.40
Grays Lake	0.00	\$0.00	0.00	\$0.00	4,038.18	\$1,843,000.00	32.49	\$4,518.30	16,054.41	20,125.08
Kootenai	0.00	\$0.00	0.00	\$0.00	2,774.15	\$708,100.00	0.00	\$0.00	0.14	2,774.29
State Total 5	0.00	\$0.00	0.00	\$0.00	18,118.79	\$2,992,495.64	32.49	\$4,519.30	46,353.29	64,504.57
Illinois										
Chautauqua	0.00	\$0.00	0.00	\$0.00	44.54	\$2,525.38	0.00	\$0.00	6,543.45	6,587.99
Crab Orchard	0.00	\$0.00	0.00	\$0.00	651.07	\$0.00	0.00	\$0.00	43,324.46	43,975.53
FSA Interest IL *	0.00	\$0.00	0.00	\$0.00	0.00	\$0.00	0.00	\$0.00	806.40	** 806.40
Great River	0.00	\$0.00	0.00	\$0.00	1,559.87	\$353,202.72	0.00	\$0.00	6,410.76	(8) 7,970.63
Meredosia	0.00	\$0.00	0.00	\$0.00	0.00	\$0.00	0.00	\$0.00	3,398.46	3,398.46
Middle Mississippi River	0.00	\$0.00	0.00	\$0.00	0.00	\$0.00	0.00	\$0.00	6,398.94	(8) 6,398.94
Port Louisa	0.00	\$0.00	0.00	\$0.00	0.00	\$0.00	0.00	\$0.00	1,470.89	(19) 1,470.89
Two Rivers	0.00	\$0.00	0.00	\$0.00	796.17	\$346,943.75	0.00	\$0.00	7,237.03	(8) 8,033.20
State Total 8	0.00	\$0.00	0.00	\$0.00	3,051.65	\$702,671.85	0.00	\$0.00	75,590.39	78,642.04
Indiana										
FSA Interest IN *	0.00	\$0.00	0.00	\$0.00	0.00	\$0.00	0.00	\$0.00	689.20	** 689.20
Muscatatuck	0.00	\$0.00	0.00	\$0.00	7,713.53	\$3,582,837.72	0.00	\$0.00	88.69	7,802.22
State Total 1	0.00	\$0.00	0.00	\$0.00	7,713.53	\$3,582,837.72	0.00	\$0.00	777.89	8,491.42
Iowa										
Desoto	0.00	\$0.00	0.00	\$0.00	3,444.79	\$639,117.53	0.00	\$0.00	57.98	(10) 3,502.77
FSA Interest IA *	0.00	\$0.00	0.00	\$0.00	0.00	\$0.00	0.00	\$0.00	566.17	** 566.17
Port Louisa *	0.00	\$0.00	0.00	\$0.00	47.50	\$16,000.00	0.00	\$0.00	22,596.86	(11)22,644.36
Union Slough	0.00	\$0.00	0.00	\$0.00	2,845.24	\$210,406.69	70.70	\$608.00	0.00	2,915.94

Table 1. National Migratory Bird Refuges

State and Unit	FISCAL YEAR MBCF ACQUISITION				CUMULATIVE TOTALS AT END OF FISCAL YEAR						
	Purchased		Easement or Lease		MBCF				All Other Acres	Total Acres	
	Acres	Cost	Acres	Cost	Acres	Cost	Acres	Cost			
State Total	2	0.00	\$0.00	0.00	\$0.00	6,337.53	\$865,524.22	70.70	\$608.00	23,221.01	29,629.24
Kansas											
Flint Hills		0.00	\$0.00	0.00	\$0.00	0.00	\$0.00	0.00	\$0.00	18,463.36	18,463.36
FSA Interest KS	*	0.00	\$0.00	0.00	\$0.00	0.00	\$0.00	0.00	\$0.00	116.50	** 116.50
Kirwin		0.00	\$0.00	0.00	\$0.00	0.00	\$0.00	0.00	\$0.00	10,778.00	10,778.00
Quivira		0.00	\$0.00	0.00	\$0.00	21,820.10	\$2,059,238.00	0.00	\$0.00	199.20	22,019.30
State Total	3	0.00	\$0.00	0.00	\$0.00	21,820.10	\$2,059,238.00	0.00	\$0.00	29,557.06	51,377.16
Kentucky											
Reelfoot		0.00	\$0.00	0.00	\$0.00	2,039.64	\$418,450.15	0.00	\$0.00	0.00	(14) 2,039.64
State Total	1	0.00	\$0.00	0.00	\$0.00	2,039.64	\$418,450.15	0.00	\$0.00	0.00	2,039.64
Louisiana											
Bayou Cocodrie		0.00	\$0.00	0.00	\$0.00	4,913.60	\$3,697,578.00	0.00	\$0.00	9,804.91	14,718.51
Bayou Sauvage		0.00	\$0.00	0.00	\$0.00	2,027.40	\$1,112,500.00	0.00	\$0.00	22,623.33	24,650.73
Black Bayou Lake		0.00	\$0.00	0.00	\$0.00	88.60	\$150,000.00	0.00	\$0.00	4,433.71	4,522.31
Cameron Prairie		0.00	\$0.00	0.00	\$0.00	9,621.30	\$5,090,650.00	0.00	\$0.00	14,926.73	24,548.03
Cat Island		0.00	\$0.00	0.00	\$0.00	1,641.44	\$2,576,000.00	0.00	\$0.00	8,832.91	10,474.35
Catahoula		0.00	\$0.00	0.00	\$0.00	14,869.86	\$2,190,082.25	0.00	\$0.00	10,154.05	25,023.91
D'Arbonne		0.00	\$0.00	0.00	\$0.00	0.00	\$0.00	0.00	\$0.00	17,419.63	17,419.63
Delta		0.00	\$0.00	0.00	\$0.00	34,462.73	\$233,324.17	0.00	\$0.00	14,338.68	48,801.41
FSA Interest LA	*	0.00	\$0.00	0.00	\$0.00	0.00	\$0.00	0.00	\$0.00	10,882.39	**10,882.39
Grand Cote		0.00	\$0.00	0.00	\$0.00	1,882.56	\$876,173.00	0.00	\$0.00	4,131.77	6,014.33
Lacassine		0.00	\$0.00	0.00	\$0.00	9,880.42	\$999,156.43	640.00	\$337,600.00	23,839.97	34,360.39
Lake Ophelia		0.00	\$0.00	0.00	\$0.00	3,064.90	\$1,451,930.00	0.00	\$0.00	14,496.56	17,561.46
Mandalay		0.00	\$0.00	0.00	\$0.00	0.00	\$0.00	0.00	\$0.00	4,619.73	4,619.73
Red River		0.00	\$0.00	0.00	\$0.00	3,589.96	\$2,992,901.00	0.00	\$0.00	9,477.30	13,067.26
Sabine		0.00	\$0.00	0.00	\$0.00	566.66	\$14,000.51	0.00	\$0.00	125,223.42	125,790.08
Tensas River		0.00	\$0.00	0.00	\$0.00	1,511.89	\$1,220,227.00	0.00	\$0.00	74,760.78	76,272.67
Upper Ouachita		4,233.77	\$4,950,071.00	0.00	\$0.00	50,825.58	\$34,563,585.00	0.00	\$1,823,540.00	2,030.14	52,855.72
State Total	16	4,233.77	\$4,950,071.00	0.00	\$0.00	138,946.90	\$57,168,107.36	640.00	\$2,161,140.00	371,996.01	511,582.91
Maine											
Aroostook		0.00	\$0.00	0.00	\$0.00	0.00	\$0.00	0.00	\$0.00	5,252.25	5,252.25
Cross Island		0.00	\$0.00	0.00	\$0.00	0.00	\$0.00	0.00	\$0.00	1,723.10	1,723.10
Franklin Island		0.00	\$0.00	0.00	\$0.00	0.00	\$0.00	0.00	\$0.00	11.94	11.94
FSA Interest ME	*	0.00	\$0.00	0.00	\$0.00	0.00	\$0.00	0.00	\$0.00	622.08	** 622.08
Moosehorn		0.00	\$0.00	0.00	\$0.00	19,782.52	\$2,023,308.59	0.00	\$0.00	9,557.82	29,340.34
Petit Manan		0.00	\$0.00	0.00	\$0.00	1,472.30	\$350,000.00	0.00	\$0.00	4,952.43	6,424.73
Pond Island		0.00	\$0.00	0.00	\$0.00	0.00	\$0.00	0.00	\$0.00	10.00	10.00
Rachel Carson		0.00	\$0.00	0.00	\$0.00	2,870.31	\$1,539,347.75	2.97	\$3,100.00	2,675.99	5,549.27
Seal Island		0.00	\$0.00	0.00	\$0.00	0.00	\$0.00	0.00	\$0.00	65.00	65.00
Sunkhaze Meadows		0.00	\$0.00	0.00	\$0.00	1,170.00	\$250,500.00	0.00	\$0.00	10,265.71	11,435.71
Umbagog	*	0.00	\$0.00	0.00	\$0.00	3,993.24	\$1,926,119.70	0.00	\$0.00	3,983.17	(36) 7,976.41
State Total	9	0.00	\$0.00	0.00	\$0.00	29,288.37	\$6,089,276.04	2.97	\$3,100.00	39,119.49	68,410.83
Maryland											
Blackwater		162.54	\$811,313.00	0.00	\$0.00	20,653.73	\$13,246,496.86	0.00	\$0.00	7,731.07	28,384.80
Chincoteague	*	0.00	\$0.00	0.00	\$0.00	417.81	\$13,780.42	0.00	\$0.00	0.00	(16) 417.81
Eastern Neck		0.00	\$0.00	0.00	\$0.00	2,286.27	\$1,606,145.09	0.00	\$0.00	0.00	2,286.27
FSA Interest MD	*	0.00	\$0.00	0.00	\$0.00	0.00	\$0.00	0.00	\$0.00	67.94	** 67.94
Martin		0.00	\$0.00	0.00	\$0.00	1,853.57	\$61,027.00	0.00	\$0.00	2,569.86	(16) 4,423.43
Patuxent		0.00	\$0.00	0.00	\$0.00	431.93	\$7,667.57	0.00	\$0.00	12,409.00	12,840.93
Susquehanna		0.00	\$0.00	0.00	\$0.00	0.00	\$0.00	0.00	\$0.00	3.79	3.79
State Total	5	162.54	\$811,313.00	0.00	\$0.00	25,643.31	\$14,935,116.94	0.00	\$0.00	22,781.66	48,424.97
Massachusetts											
Assabet River		0.00	\$0.00	0.00	\$0.00	103.38	\$125,273.00	0.00	\$0.00	2,229.20	2,332.58
Great Meadows		0.00	\$0.00	0.00	\$0.00	2,902.81	\$2,209,918.90	0.00	\$0.00	948.00	3,850.81
Monomoy		0.00	\$0.00	0.00	\$0.00	7,435.46	\$18,339.00	0.00	\$0.00	168.54	7,604.00
Nantucket		0.00	\$0.00	0.00	\$0.00	0.00	\$0.00	0.00	\$0.00	24.00	24.00
Nomans Land Island		0.00	\$0.00	0.00	\$0.00	0.00	\$0.00	0.00	\$0.00	628.00	628.00
Oxbow		0.00	\$0.00	0.00	\$0.00	0.00	\$0.00	0.00	\$0.00	1,697.53	1,697.53
Parker River		0.00	\$0.00	0.00	\$0.00	4,617.79	\$107,740.84	0.00	\$0.00	109.42	4,727.21
Silvio O. Conte	*	0.00	\$0.00	0.00	\$0.00	230.38	\$371,361.00	0.00	\$0.00	719.18	(41) 949.56
Thacher Island		0.00	\$0.00	0.00	\$0.00	0.00	\$0.00	0.00	\$0.00	22.00	22.00
State Total	8	0.00	\$0.00	0.00	\$0.00	15,289.82	\$2,832,632.74	0.00	\$0.00	6,545.87	21,835.69

Table 1. National Migratory Bird Refuges

State and Unit	FISCAL YEAR MBCF ACQUISITION				CUMULATIVE TOTALS AT END OF FISCAL YEAR					
	Purchased		Easement or Lease		MBCF				All Other Acres	Total Acres
	Acres	Cost	Acres	Cost	Purchased		Easement or Lease			
				Acres	Cost	Acres	Cost			
Michigan										
Detroit River	0.00	\$0.00	0.00	\$0.00	283.95	\$1,749,068.00	0.00	\$0.00	5,531.85	5,815.80
FSA Interest MI *	0.00	\$0.00	0.00	\$0.00	0.00	\$0.00	0.00	\$0.00	5,220.70	** 5,220.70
Michigan Islands	0.00	\$0.00	0.00	\$0.00	0.00	\$0.00	0.00	\$0.00	744.39	744.39
Seney	0.00	\$0.00	0.00	\$0.00	44,201.80	\$127,726.66	0.00	\$0.00	51,062.86	95,264.66
Shiawassee	0.00	\$0.00	0.00	\$0.00	8,376.46	\$1,401,015.67	0.00	\$0.00	1,493.89	9,870.35
State Total 4	0.00	\$0.00	0.00	\$0.00	52,862.21	\$3,277,810.33	0.00	\$0.00	64,053.69	116,915.90
Minnesota										
Agassiz	0.00	\$0.00	0.00	\$0.00	700.11	\$40,226.04	0.00	\$0.00	60,800.82	61,500.93
Big Stone	0.00	\$0.00	0.00	\$0.00	0.00	\$0.00	0.00	\$0.00	11,585.42	11,585.42
FSA Interest MN *	0.00	\$0.00	0.00	\$0.00	0.00	\$0.00	0.00	\$0.00	8,906.20	** 8,906.20
Glacial Ridge	0.00	\$0.00	0.00	\$0.00	16,722.61	\$4,175,000.00	0.00	\$0.00	6,010.13	22,732.74
Hamden Slough	0.00	\$0.00	0.00	\$0.00	3,136.45	\$1,832,872.00	73.40	\$0.00	0.00	3,209.85
Rice Lake	0.00	\$0.00	0.00	\$0.00	6,435.60	\$197,329.77	0.00	\$0.00	7,991.32	14,426.92
Rydell	0.00	\$0.00	0.00	\$0.00	0.00	\$0.00	0.00	\$0.00	2,070.00	2,070.00
Sherburne	0.00	\$0.00	0.00	\$0.00	29,556.90	\$3,273,341.05	0.00	\$0.00	120.94	29,677.84
Tamarac	0.00	\$0.00	0.00	\$0.00	35,151.38	\$612,159.93	0.00	\$0.00	46.58	35,197.96
State Total 8	0.00	\$0.00	0.00	\$0.00	91,703.05	\$10,130,928.79	73.40	\$0.00	97,531.41	189,307.86
Mississippi										
Coldwater River	-306.60	\$0.00	0.00	\$0.00	2,387.50	\$2,198,450.00	0.00	\$0.00	94.26	2,481.76
Dahomey	0.00	\$0.00	0.00	\$0.00	0.00	\$0.00	260.00	\$63,180.00	8,906.80	9,166.80
FSA Interest MS *	0.00	\$0.00	0.00	\$0.00	0.00	\$0.00	0.00	\$0.00	17,388.64	***17,388.64
Hillside	0.00	\$0.00	0.00	\$0.00	291.43	\$164,500.00	0.00	\$0.00	15,407.37	15,698.80
Mathews Brake	0.00	\$0.00	0.00	\$0.00	2,406.07	\$1,691,446.00	0.00	\$0.00	8.64	2,414.71
Morgan Brake	0.00	\$0.00	0.00	\$0.00	7,241.28	\$4,517,482.20	0.00	\$0.00	222.49	7,463.77
Panther Swamp	0.00	\$0.00	0.00	\$0.00	32,243.96	\$20,453,483.00	640.00	\$244,710.00	7,765.06	40,649.02
Sam D. Hamilton Noxubee	0.00	\$0.00	0.00	\$0.00	1,427.14	\$145,413.05	0.00	\$0.00	45,827.46	47,254.60
St. Catherine Creek	0.00	\$0.00	0.00	\$0.00	24,429.29	\$12,925,167.00	502.10	\$164,799.92	160.00	25,091.39
Tallahatchie	165.49	\$0.00	0.00	\$0.00	2,489.63	\$1,361,000.00	0.00	\$0.00	2,098.11	4,587.74
Yazoo	0.00	\$0.00	0.00	\$0.00	12,940.43	\$2,659,743.78	0.00	\$32,760.00	2.21	12,942.64
State Total 10	-141.11	\$0.00	0.00	\$0.00	85,856.73	\$46,116,685.03	1,402.10	\$505,449.92	97,881.04	185,139.87
Missouri										
Clarence Cannon	0.00	\$0.00	0.00	\$0.00	3,736.04	\$1,163,649.25	0.00	\$0.00	14.44	3,750.48
FSA Interest MO *	0.00	\$0.00	0.00	\$0.00	0.00	\$0.00	0.00	\$0.00	6,343.75	** 6,343.75
Great River *	0.00	\$0.00	0.00	\$0.00	1,119.78	\$460,000.00	0.00	\$0.00	988.15	(11) 2,107.93
Middle Mississippi River *	0.00	\$0.00	0.00	\$0.00	0.00	\$0.00	0.00	\$0.00	1,704.17	(11) 1,704.17
Mingo	0.00	\$0.00	0.00	\$0.00	21,535.95	\$298,615.82	11.86	\$27.00	113.24	21,661.05
Squaw Creek	0.00	\$0.00	0.00	\$0.00	801.32	\$38,275.46	1.00	\$0.00	6,612.57	7,414.89
Swan Lake	0.00	\$0.00	0.00	\$0.00	5,379.32	\$355,193.19	0.00	\$0.00	6,113.65	11,492.97
Two Rivers *	0.00	\$0.00	0.00	\$0.00	0.00	\$0.00	0.00	\$0.00	232.00	(11) 232.00
State Total 4	0.00	\$0.00	0.00	\$0.00	32,572.41	\$2,315,733.72	12.86	\$27.00	22,121.97	54,707.24
Montana										
Benton Lake	0.00	\$0.00	0.00	\$0.00	147.64	\$5,315.00	60.94	\$8,763.00	12,292.94	12,501.52
Black Coulee	0.00	\$0.00	0.00	\$0.00	0.00	\$0.00	0.00	\$0.00	1,308.88	1,308.88
Bowdoin	0.00	\$0.00	0.00	\$0.00	0.00	\$0.00	0.00	\$0.00	15,551.97	15,551.97
Charles M. Russell	0.00	\$0.00	0.00	\$0.00	0.00	\$0.00	0.00	\$0.00	919,634.93	919,634.93
Creedman Coulee	0.00	\$0.00	0.00	\$0.00	0.00	\$0.00	0.00	\$0.00	2,728.00	2,728.00
FSA Interest MT *	0.00	\$0.00	0.00	\$0.00	0.00	\$0.00	0.00	\$0.00	2,065.12	** 2,065.12
Hailstone	0.00	\$0.00	0.00	\$0.00	0.00	\$0.00	0.00	\$0.00	920.00	920.00
Halfbreed Lake	0.00	\$0.00	0.00	\$0.00	3,279.02	\$291,000.00	640.00	\$35,328.86	399.22	4,318.24
Hewitt Lake	0.00	\$0.00	0.00	\$0.00	0.00	\$0.00	0.00	\$0.00	1,360.92	1,360.92
Lake Mason	0.00	\$0.00	0.00	\$0.00	4,100.45	\$0.00	0.00	\$0.00	12,714.07	16,814.52
Lake Thibadeau	0.00	\$0.00	0.00	\$0.00	0.00	\$0.00	0.00	\$0.00	3,868.48	3,868.48
Lamester	0.00	\$0.00	0.00	\$0.00	0.00	\$0.00	0.00	\$0.00	800.00	800.00
Lee Metcalf	0.00	\$0.00	0.00	\$0.00	2,696.29	\$799,680.00	0.00	\$0.00	103.23	2,799.52
Lost Trail	0.00	\$0.00	0.00	\$0.00	4,693.20	\$1,728,205.00	1,029.04	\$4,128.48	3,182.87	8,905.11
Medicine Lake	0.00	\$0.00	0.00	\$0.00	2,513.26	\$25,460.00	0.00	\$0.00	29,020.45	31,533.71
Red Rock Lakes	0.00	\$0.00	0.00	\$21,998.48	3,615.28	\$4,544,191.00	3,106.32	\$79,396.38	78,050.87	84,772.47
Swan River	0.00	\$0.00	0.00	\$0.00	1,568.81	\$901,645.00	0.00	\$0.00	0.00	1,568.81
UL Bend	0.00	\$0.00	0.00	\$0.00	9,688.19	\$577,280.00	0.00	\$0.00	46,401.37	56,089.56
War Horse	0.00	\$0.00	0.00	\$0.00	0.00	\$0.00	0.00	\$0.00	3,392.87	3,392.87
State Total 18	0.00	\$0.00	0.00	\$21,998.48	32,302.14	\$8,872,776.00	4,836.30	\$127,616.72	1,133,796.19	1,170,934.63

Table 1. National Migratory Bird Refuges

State and Unit	FISCAL YEAR MBCF ACQUISITION				CUMULATIVE TOTALS AT END OF FISCAL YEAR					
	Purchased		Easement or Lease		MBCF				All Other Acres	Total Acres
	Acres	Cost	Acres	Cost	Purchased		Easement or Lease			
				Acres	Cost	Acres	Cost			
Nebraska										
Crescent Lake	0.00	\$0.00	0.00	\$0.00	3,710.00	\$31,048.00	31.49	\$3,189.00	42,253.86	45,995.35
Desoto *	0.00	\$0.00	0.00	\$0.00	3,660.32	\$591,507.20	0.00	\$0.00	663.88	(19) 4,324.20
FSA Interest NE *	0.00	\$0.00	0.00	\$0.00	0.00	\$0.00	0.00	\$0.00	3,070.18	** 3,070.18
Valentine	0.00	\$0.00	0.00	\$0.00	6,158.34	\$62,747.00	0.00	\$0.00	66,939.75	73,098.09
State Total 2	0.00	\$0.00	0.00	\$0.00	13,528.66	\$685,302.20	31.49	\$3,189.00	112,927.67	126,487.82
Nevada										
Anaho Island	0.00	\$0.00	0.00	\$0.00	0.00	\$0.00	0.00	\$0.00	247.73	247.73
Desert	0.00	\$0.00	0.00	\$0.00	320.00	\$5,600.00	0.00	\$0.00	1,614,993.49	1,615,313.49
Fallon	0.00	\$0.00	0.00	\$0.00	0.00	\$0.00	0.00	\$0.00	17,901.94	17,901.94
Pahranagat	0.00	\$0.00	0.00	\$0.00	3,915.60	\$500,000.00	0.75	\$0.00	1,467.55	5,383.90
Ruby Lake	0.00	\$0.00	0.00	\$0.00	29,945.73	\$208,437.25	0.00	\$0.00	9,980.37	39,926.10
Sheldon	0.00	\$0.00	0.00	\$0.00	23,143.67	\$2,002.00	0.00	\$0.00	549,842.48	(47)2,986.15
Stillwater	0.00	\$0.00	0.00	\$0.00	0.00	\$0.00	0.00	\$0.00	87,574.65	87,574.65
State Total 7	0.00	\$0.00	0.00	\$0.00	57,325.00	\$716,039.25	0.75	\$0.00	2,282,008.21	2,339,333.96
New Hampshire										
Silvio O. Conte *	0.00	\$0.00	0.00	\$0.00	2,690.09	\$2,733,645.50	3.40	\$2,054.50	4,925.07	(42) 7,618.56
Umbagog	0.00	\$0.00	0.00	\$0.00	10,656.39	\$6,135,246.58	0.00	\$1.00	14,204.62	(37)24,861.01
State Total 1	0.00	\$0.00	0.00	\$0.00	13,346.48	\$8,868,892.08	3.40	\$2,055.50	19,129.69	32,479.57
New Jersey										
Cape May	0.00	\$0.00	0.00	\$0.00	4,564.56	\$5,038,193.00	0.00	\$0.00	7,549.46	12,114.02
Edwin B. Forsythe	0.00	\$0.00	0.00	\$0.00	40,002.73	\$17,903,592.97	0.00	\$1,300.00	7,434.34	47,437.07
Great Swamp	0.00	\$0.00	0.00	\$0.00	2,808.67	\$3,577,691.05	0.00	\$0.00	4,964.45	7,773.12
Supawna Meadows	0.00	\$0.00	0.00	\$0.00	2,526.83	\$968,744.00	0.00	\$0.00	746.52	3,273.35
Walkkill River *	0.00	\$0.00	0.00	\$0.00	1,382.51	\$3,001,912.50	2.08	\$1.00	4,242.08	(39) 5,626.67
State Total 4	0.00	\$0.00	0.00	\$0.00	51,285.30	\$30,490,133.52	2.08	\$1,301.00	24,936.85	76,224.23
New Mexico										
Bitter Lake	0.00	\$0.00	0.00	\$0.00	10,753.66	\$52,304.00	0.00	\$0.00	13,854.98	24,608.64
Bosque del Apache	0.00	\$0.00	0.00	\$0.00	56,850.31	\$125,311.00	0.00	\$0.00	480.87	57,331.18
Las Vegas	0.00	\$0.00	0.00	\$0.00	8,672.08	\$2,121,150.00	0.00	\$0.00	0.00	8,672.08
Maxwell	0.00	\$0.00	0.00	\$0.00	2,791.69	\$423,370.79	0.00	\$0.00	906.90	3,698.59
State Total 4	0.00	\$0.00	0.00	\$0.00	79,067.74	\$2,722,135.79	0.00	\$0.00	15,242.75	94,310.49
New York										
Amagansett	0.00	\$0.00	0.00	\$0.00	0.00	\$0.00	0.00	\$0.00	35.84	35.84
Conscience Point	0.00	\$0.00	0.00	\$0.00	0.00	\$0.00	0.00	\$0.00	60.40	60.40
Elizabeth A. Morton	0.00	\$0.00	0.00	\$0.00	0.00	\$0.00	0.00	\$0.00	187.19	187.19
FSA Interest NY *	0.00	\$0.00	0.00	\$0.00	0.00	\$0.00	0.00	\$0.00	2,706.76	** 2,706.76
Iroquois	0.00	\$0.00	0.00	\$0.00	10,757.81	\$1,279,615.46	0.00	\$0.00	70.25	10,828.06
Montezuma	0.00	\$0.00	0.00	\$0.00	8,612.60	\$5,027,718.56	0.00	\$0.00	1,391.98	10,004.58
Oyster Bay	0.00	\$0.00	0.00	\$0.00	0.00	\$0.00	0.00	\$0.00	3,204.08	3,204.08
Seatuck	0.00	\$0.00	0.00	\$0.00	0.00	\$0.00	0.00	\$0.00	209.23	209.23
Shawangunk Grasslands	0.00	\$0.00	0.00	\$0.00	0.00	\$0.00	0.00	\$0.00	566.53	566.53
Target Rock	0.00	\$0.00	0.00	\$0.00	0.00	\$0.00	0.00	\$0.00	80.09	80.09
Walkkill River	0.00	\$0.00	0.00	\$0.00	0.00	\$0.00	0.00	\$0.00	307.69	(40) 307.69
Wertheim	0.00	\$0.00	0.00	\$0.00	188.70	\$193,217.80	0.00	\$0.00	2,499.09	2,687.79
State Total 11	0.00	\$0.00	0.00	\$0.00	19,559.11	\$6,500,551.82	0.00	\$0.00	11,319.13	30,878.24
North Carolina										
Cedar Island	0.00	\$0.00	0.00	\$0.00	12,498.77	\$389,171.21	0.00	\$0.00	1,997.55	14,496.32
Currituck	0.00	\$0.00	0.00	\$0.00	3,762.61	\$8,689,434.00	225.76	\$120,000.00	4,335.52	8,323.89
FSA Interest NC *	0.00	\$0.00	0.00	\$0.00	0.00	\$0.00	0.00	\$0.00	7,336.58	** 7,336.58
Great Dismal Swamp	0.00	\$0.00	0.00	\$0.00	2,790.60	\$3,155,540.00	0.00	\$1.00	24,811.80	(16)27,602.40
Mackay Island	0.00	\$0.00	0.00	\$0.00	6,370.24	\$1,172,606.95	0.00	\$0.00	1,015.56	(16) 7,385.80
Mattamuskeet	0.00	\$0.00	0.00	\$0.00	252.04	\$1,285.35	0.00	\$0.00	49,921.89	50,173.93
Pea Island	0.00	\$0.00	0.00	\$0.00	5,787.97	\$40,401.86	0.00	\$0.00	46.40	5,834.37
Pee Dee	0.00	\$0.00	0.00	\$0.00	8,438.19	\$2,561,694.76	0.75	\$157.00	27.66	8,466.60
Pocosin Lakes	0.00	\$0.00	0.00	\$0.00	12,350.35	\$1,682,157.99	0.00	\$0.00	97,756.29	110,106.64
Roanoke River	0.00	\$0.00	0.00	\$0.00	15,692.43	\$8,338,258.00	0.00	\$0.00	4,870.00	20,562.43

Table 1. National Migratory Bird Refuges

State and Unit	FISCAL YEAR MBCF ACQUISITION				CUMULATIVE TOTALS AT END OF FISCAL YEAR					
	Purchased		Easement or Lease		MBCF				All Other Acres	Total Acres
	Acres	Cost	Acres	Cost	Purchased		Easement or Lease			
				Acres	Cost	Acres	Cost			
North Carolina (Continued)										
Swanquarter	0.00	\$0.00	0.00	\$0.00	15,492.76	\$60,920.93	0.00	\$0.00	918.33	16,411.09
State Total 10	0.00	\$0.00	0.00	\$0.00	83,435.96	\$26,091,471.05	226.51	\$120,158.00	193,037.58	276,700.05
North Dakota										
Appert Lake	0.00	\$0.00	0.00	\$0.00	0.00	\$0.00	0.00	\$0.00	907.75	907.75
Ardoch	0.00	\$0.00	0.00	\$0.00	288.13	\$2,739.00	0.00	\$0.00	2,408.00	2,696.13
Arrowwood	0.00	\$0.00	0.00	\$0.00	2,097.51	\$46,906.58	0.00	\$0.00	13,845.35	15,942.86
Audubon	0.00	\$0.00	0.00	\$0.00	0.00	\$0.00	0.00	\$0.00	14,739.19	14,739.19
Bone Hill	0.00	\$0.00	0.00	\$0.00	0.00	\$0.00	0.00	\$0.00	640.00	640.00
Brumba	0.00	\$0.00	0.00	\$0.00	0.00	\$0.00	0.00	\$0.00	1,977.48	1,977.48
Buffalo Lake	0.00	\$0.00	0.00	\$0.00	0.00	\$0.00	0.00	\$0.00	1,563.72	1,563.72
Camp Lake	0.00	\$0.00	0.00	\$0.00	0.00	\$0.00	0.00	\$0.00	584.70	584.70
Canfield Lake	0.00	\$0.00	0.00	\$0.00	3.10	\$100.00	0.00	\$0.00	310.13	313.23
Chase Lake	0.00	\$0.00	0.00	\$0.00	4,449.47	\$25,611.00	0.00	\$0.00	0.00	4,449.47
Cottonwood Lake	0.00	\$0.00	0.00	\$0.00	0.00	\$0.00	0.00	\$0.00	1,013.47	1,013.47
Dakota Grassland	0.00	\$0.00	0.00	\$0.00	0.00	\$0.00	0.00	\$0.00	25,154.88	25,154.88
Dakota Lake	0.00	\$0.00	0.00	\$0.00	0.00	\$0.00	0.00	\$0.00	2,799.78	2,799.78
Des Lacs	0.00	\$0.00	0.00	\$0.00	631.63	\$6,893.60	2.70	\$0.00	18,912.81	19,547.14
Florence Lake	0.00	\$0.00	0.00	\$0.00	1,468.40	\$31,485.00	0.00	\$0.00	419.80	1,888.20
FSA Interest ND *	0.00	\$0.00	0.00	\$0.00	0.00	\$0.00	0.00	\$0.00	4,770.20	** 4,770.20
Half-way Lake	0.00	\$0.00	0.00	\$0.00	0.00	\$0.00	160.00	\$0.00	0.00	160.00
Hiddenwood	0.00	\$0.00	0.00	\$0.00	0.00	\$0.00	568.35	\$0.00	0.00	568.35
Hobart Lake	0.00	\$0.00	0.00	\$0.00	236.49	\$5,165.00	0.00	\$0.00	1,840.61	2,077.10
Hutchinson Lake	0.00	\$0.00	0.00	\$0.00	0.00	\$0.00	0.00	\$0.00	478.90	478.90
J. Clark Salyer	0.00	\$0.00	0.00	\$0.00	21,649.95	\$306,352.60	50.52	\$0.00	37,675.93	59,376.40
Johnson Lake	0.00	\$0.00	0.00	\$0.00	0.00	\$0.00	0.00	\$0.00	2,007.91	2,007.91
Kellys Slough	0.00	\$0.00	0.00	\$0.00	0.00	\$0.00	0.00	\$0.00	1,269.50	1,269.50
Lake Alice	0.00	\$0.00	0.00	\$0.00	8,027.86	\$2,067,184.00	8.00	\$0.00	4,059.68	12,095.54
Lake George	0.00	\$0.00	0.00	\$0.00	0.00	\$0.00	0.00	\$0.00	3,118.81	3,118.81
Lake Ilo	0.00	\$0.00	0.00	\$0.00	3,178.30	\$78,582.98	0.00	\$0.00	854.82	4,033.12
Lake Nettie	0.00	\$0.00	0.00	\$0.00	2,420.60	\$148,245.00	0.00	\$0.00	634.30	3,054.90
Lake Otis	0.00	\$0.00	0.00	\$0.00	0.00	\$0.00	0.00	\$0.00	320.00	320.00
Lake Patricia	0.00	\$0.00	0.00	\$0.00	0.00	\$0.00	0.00	\$0.00	800.23	800.23
Lake Zahl	0.00	\$0.00	0.00	\$0.00	3,178.98	\$53,275.00	0.00	\$0.00	644.21	3,823.19
Lambs Lake	0.00	\$0.00	0.00	\$0.00	0.00	\$0.00	0.00	\$0.00	1,206.67	1,206.67
Little Goose	0.00	\$0.00	0.00	\$0.00	0.00	\$0.00	0.00	\$0.00	288.41	288.41
Long Lake	0.00	\$0.00	0.00	\$0.00	12,578.82	\$77,180.00	217.35	\$10.00	9,702.33	22,498.50
Lords Lake	0.00	\$0.00	0.00	\$0.00	0.00	\$0.00	0.00	\$0.00	1,915.29	1,915.29
Lost Lake	0.00	\$0.00	0.00	\$0.00	0.00	\$0.00	0.00	\$0.00	960.21	960.21
Lostwood	0.00	\$0.00	0.00	\$0.00	3,148.01	\$24,553.00	0.00	\$0.00	24,440.57	27,588.58
Maple River	0.00	\$0.00	0.00	\$0.00	0.00	\$0.00	0.00	\$0.00	712.00	712.00
McLean	0.00	\$0.00	0.00	\$0.00	344.00	\$12,516.00	0.00	\$0.00	416.00	760.00
Pleasant Lake	0.00	\$0.00	0.00	\$0.00	0.00	\$0.00	0.00	\$0.00	897.80	897.80
Pretty Rock	0.00	\$0.00	0.00	\$0.00	0.00	\$0.00	0.00	\$0.00	800.00	800.00
Rabb Lake	0.00	\$0.00	0.00	\$0.00	0.00	\$0.00	0.00	\$0.00	260.80	260.80
Rock Lake	0.00	\$0.00	0.00	\$0.00	0.00	\$0.00	0.00	\$0.00	5,665.96	5,665.96
Rose Lake	0.00	\$0.00	0.00	\$0.00	0.00	\$0.00	0.00	\$0.00	836.30	836.30
School Section Lake	0.00	\$0.00	0.00	\$0.00	0.00	\$0.00	0.00	\$0.00	297.30	297.30
Shell Lake	0.00	\$0.00	0.00	\$0.00	710.20	\$17,902.00	0.00	\$0.00	1,124.90	1,835.10
Sheyenne Lake	0.00	\$0.00	0.00	\$0.00	0.00	\$0.00	0.00	\$0.00	797.30	797.30
Sibley Lake	0.00	\$0.00	0.00	\$0.00	0.00	\$0.00	0.00	\$0.00	1,077.40	1,077.40
Silver Lake	0.00	\$0.00	0.00	\$0.00	0.00	\$0.00	0.00	\$0.00	3,347.64	3,347.64
Slade	0.00	\$0.00	0.00	\$0.00	0.00	\$0.00	0.00	\$0.00	3,000.20	3,000.20
Snyder Lake	0.00	\$0.00	0.00	\$0.00	0.00	\$0.00	0.00	\$0.00	1,550.18	1,550.18
Springwater	0.00	\$0.00	0.00	\$0.00	0.00	\$0.00	0.00	\$0.00	640.00	640.00
Stewart Lake	0.00	\$0.00	0.00	\$0.00	0.00	\$0.00	0.00	\$0.00	2,230.40	2,230.40
Stoney Slough	0.00	\$0.00	0.00	\$0.00	0.00	\$0.00	0.00	\$0.00	880.00	880.00
Storm Lake	0.00	\$0.00	0.00	\$0.00	0.00	\$0.00	0.00	\$0.00	685.90	685.90
Stump Lake	0.00	\$0.00	0.00	\$0.00	0.00	\$0.00	0.00	\$0.00	27.39	27.39
Sunburst Lake	0.00	\$0.00	0.00	\$0.00	0.00	\$0.00	0.00	\$0.00	327.51	327.51
Tewaukon	0.00	\$0.00	0.00	\$0.00	6,790.23	\$460,122.00	0.00	\$0.00	1,573.39	8,363.62
Tomahawk	0.00	\$0.00	0.00	\$0.00	0.00	\$0.00	0.00	\$0.00	440.00	440.00

Table 1. National Migratory Bird Refuges

State and Unit	FISCAL YEAR MBCF ACQUISITION				CUMULATIVE TOTALS AT END OF FISCAL YEAR					
	Purchased		Easement or Lease		MBCF				All Other Acres	Total Acres
	Acres	Cost	Acres	Cost	Acres	Cost	Acres	Cost		
North Dakota (Continued)										
Upper Souris	0.00	\$0.00	0.00	\$0.00	2,939.17	\$41,220.00	3.76	\$0.00	29,359.32	32,302.25
White Lake	0.00	\$0.00	0.00	\$0.00	1,040.00	\$28,800.00	0.00	\$0.00	0.00	1,040.00
Wild Rice Lake	0.00	\$0.00	0.00	\$0.00	0.00	\$0.00	0.00	\$0.00	778.80	778.80
Willow Lake	0.00	\$0.00	0.00	\$0.00	0.00	\$0.00	0.00	\$0.00	2,620.38	2,620.38
Wintering River	0.00	\$0.00	0.00	\$0.00	0.00	\$0.00	0.00	\$0.00	239.26	239.26
Wood Lake	0.00	\$0.00	0.00	\$0.00	0.00	\$0.00	0.00	\$0.00	280.00	280.00
State Total	63	\$0.00	\$0.00	\$0.00	75,180.85	\$3,434,832.76	1,010.68	\$10.00	243,131.77	319,323.30
Ohio										
Cedar Point	0.00	\$0.00	0.00	\$0.00	0.00	\$0.00	0.00	\$0.00	2,449.77	2,449.77
FSA Interest OH *	0.00	\$0.00	0.00	\$0.00	0.00	\$0.00	0.00	\$0.00	5.00	** 5.00
Ottawa	0.00	\$0.00	0.00	\$0.00	5,172.11	\$2,572,893.55	725.80	\$2.00	1,013.22	6,911.13
West Sister Island	0.00	\$0.00	0.00	\$0.00	0.00	\$0.00	0.00	\$0.00	80.13	80.13
State Total	3	\$0.00	\$0.00	\$0.00	5,172.11	\$2,572,893.55	725.80	\$2.00	3,548.12	9,446.03
Oklahoma										
Deep Fork	0.00	\$0.00	0.00	\$0.00	1,571.50	\$421,000.00	0.00	\$0.00	8,176.78	9,748.28
Little River	0.00	\$0.00	0.00	\$0.00	12,262.16	\$9,881,540.94	0.00	\$0.00	1,748.42	14,010.58
Optima	0.00	\$0.00	0.00	\$0.00	0.00	\$0.00	0.00	\$0.00	4,332.81	4,332.81
Salt Plains	0.00	\$0.00	0.00	\$0.00	1,117.39	\$50,837.00	0.00	\$0.00	31,079.92	32,197.31
Sequoyah	0.00	\$0.00	0.00	\$0.00	0.00	\$0.00	0.00	\$0.00	20,800.00	20,800.00
Tishomingo	0.00	\$0.00	0.00	\$0.00	0.00	\$0.00	0.00	\$0.00	16,464.18	16,464.18
Washita	0.00	\$0.00	0.00	\$0.00	0.00	\$0.00	0.00	\$1.00	8,075.37	8,075.37
State Total	7	\$0.00	\$0.00	\$0.00	14,951.05	\$10,353,377.94	0.00	\$1.00	90,677.48	105,628.53
Oregon										
Ankeny	0.00	\$0.00	0.00	\$0.00	2,796.33	\$893,600.00	0.00	\$0.00	0.00	2,796.33
Baskett Slough	0.00	\$0.00	0.00	\$0.00	2,492.33	\$941,985.00	0.00	\$0.00	0.00	2,492.33
Cape Meares	0.00	\$0.00	0.00	\$0.00	0.00	\$0.00	0.00	\$0.00	138.51	138.51
Cold Springs	0.00	\$0.00	0.00	\$0.00	386.88	\$2,760.00	0.00	\$0.00	2,729.95	3,116.83
Deer Flat *	0.00	\$0.00	0.00	\$0.00	0.00	\$0.00	0.00	\$0.00	220.57	(21) 220.57
FSA Interest OR *	0.00	\$0.00	0.00	\$0.00	0.00	\$0.00	0.00	\$0.00	1,571.76	** 1,571.76
Hart Mountain	0.00	\$0.00	0.00	\$0.00	54,837.26	\$216,114.58	0.00	\$0.00	216,409.67	271,246.93
Klamath Marsh	0.00	\$0.00	0.00	\$0.00	18,288.86	\$2,070,694.00	0.00	\$0.00	22,756.32	41,045.18
Lewis and Clark	0.00	\$0.00	0.00	\$0.00	2,850.63	\$469,250.00	0.00	\$0.00	9,316.22	12,166.85
Lower Klamath *	0.00	\$0.00	0.00	\$0.00	0.00	\$0.00	0.00	\$0.00	6,618.13	(2) 6,618.13
Malheur	0.00	\$0.00	0.00	\$0.00	48,265.58	\$2,472,939.35	0.00	\$0.00	138,861.36	187,126.94
McNary *	0.00	\$0.00	0.00	\$0.00	0.00	\$0.00	0.00	\$0.00	1,185.10	1,185.10
Nestucca Bay	0.00	\$0.00	0.00	\$0.00	20.81	\$105,000.00	0.00	\$0.00	1,171.69	1,192.50
Oregon Islands	0.00	\$0.00	0.00	\$0.00	0.00	\$0.00	0.00	\$0.00	748.55	748.55
Sheldon *	0.00	\$0.00	0.00	\$0.00	627.48	\$4,079.00	0.00	\$0.00	0.00	(15) 627.48
Umatilla	0.00	\$0.00	0.00	\$0.00	0.00	\$0.00	0.00	\$0.00	8,907.37	(26) 8,907.37
Upper Klamath	0.00	\$0.00	0.00	\$0.00	4,146.10	\$123,476.00	0.00	\$0.00	18,951.58	23,097.68
Wapato Lake	0.00	\$0.00	0.00	\$0.00	504.40	\$2,754,296.00	0.80	\$4,375.00	439.16	944.36
William L. Finley	0.00	\$0.00	0.00	\$0.00	5,697.06	\$2,600,006.00	8.94	\$6,797.00	0.00	5,706.00
State Total	14	\$0.00	\$0.00	\$0.00	140,913.72	\$12,654,199.93	9.74	\$11,172.00	430,025.94	570,949.40
Pennsylvania										
Erie	0.00	\$0.00	0.00	\$0.00	7,962.81	\$911,480.12	0.00	\$0.00	852.42	8,815.23
John Heinz	0.00	\$0.00	0.00	\$0.00	80.33	\$20,966.00	0.00	\$0.00	912.84	993.17
State Total	2	\$0.00	\$0.00	\$0.00	8,043.14	\$932,446.12	0.00	\$0.00	1,765.26	9,808.40
Rhode Island										
Block Island	0.00	\$0.00	0.00	\$0.00	0.00	\$0.00	0.00	\$0.00	132.72	132.72
John H. Chafee	0.00	\$0.00	0.00	\$0.00	0.00	\$0.00	0.00	\$0.00	550.42	550.42
Ninigret	0.00	\$0.00	0.00	\$0.00	0.00	\$0.00	0.00	\$0.00	868.40	868.40
Sachuest Point	0.00	\$0.00	0.00	\$0.00	0.00	\$0.00	0.00	\$0.00	241.90	241.90
Trustom Pond	0.00	\$0.00	0.00	\$0.00	0.00	\$0.00	0.00	\$0.00	777.30	777.30
State Total	5	\$0.00	\$0.00	\$0.00	0.00	\$0.00	0.00	\$0.00	2,570.74	2,570.74
South Carolina										
Cape Romain	0.00	\$0.00	0.00	\$0.00	22,204.29	\$17,218.18	0.00	\$0.00	44,039.17	66,243.46
Carolina Sandhills	0.00	\$0.00	0.00	\$0.00	580.20	\$38,352.75	0.00	\$0.00	45,346.09	45,926.29
FSA Interest SC *	0.00	\$0.00	0.00	\$0.00	0.00	\$0.00	0.00	\$0.00	1,783.13	** 1,783.13
Pinckney Island	0.00	\$0.00	0.00	\$0.00	0.00	\$0.00	0.00	\$0.00	4,052.70	4,052.70
Santee	0.00	\$0.00	0.00	\$0.00	4,322.43	\$549,953.57	0.00	\$0.00	8,308.98	12,631.41
Savannah *	0.00	\$0.00	0.00	\$0.00	7,991.40	\$1,554,443.30	0.00	\$0.00	7,127.92	(11) 5,119.32

Table 1. National Migratory Bird Refuges

State and Unit	FISCAL YEAR MBCF ACQUISITION				CUMULATIVE TOTALS AT END OF FISCAL YEAR						
	Purchased		Easement or Lease		MBCF				All Other Acres	Total Acres	
	Acres	Cost	Acres	Cost	Acres	Cost	Acres	Cost			
South Carolina (Continued)											
Tybee	0.00	\$0.00	0.00	\$0.00	0.00	\$0.00	0.00	\$0.00	100.00	100.00	
Waccamaw	1,350.06	\$2,029,000.00	0.00	\$0.00	2,642.47	\$3,429,000.00	0.00	\$0.00	25,805.96	28,448.43	
State Total	6	1,350.06	\$2,029,000.00	0.00	\$0.00	37,740.79	\$5,588,967.80	0.00	\$0.00	136,563.95	174,304.74
South Dakota											
Bear Butte	0.00	\$0.00	0.00	\$0.00	0.00	\$0.00	0.00	\$0.00	374.20	374.20	
FSA Interest SD *	0.00	\$0.00	0.00	\$0.00	0.00	\$0.00	0.00	\$0.00	151.00	** 151.00	
Lacreek	0.00	\$0.00	0.00	\$0.00	9,379.75	\$768,491.00	80.00	\$35,933.00	7,395.58	16,855.33	
Lake Andes	0.00	\$0.00	0.00	\$0.00	617.64	\$92,322.00	0.00	\$0.00	5,021.79	5,639.43	
Sand Lake	0.00	\$0.00	0.00	\$0.00	3,917.39	\$90,622.00	0.00	\$0.00	17,902.80	21,820.19	
Waubay	0.00	\$0.00	0.00	\$0.00	683.77	\$23,838.00	90.53	\$0.00	3,965.92	4,740.22	
State Total	5	0.00	\$0.00	0.00	14,598.55	\$975,273.00	170.53	\$35,933.00	34,811.29	49,580.37	
Tennessee											
Chickasaw	0.00	\$0.00	0.00	\$0.00	15,637.96	\$18,331,568.72	0.00	\$0.00	10,880.95	26,518.91	
Cross Creeks	0.00	\$0.00	0.00	\$0.00	87.64	\$26,200.00	0.00	\$0.00	8,773.85	8,861.49	
FSA Interest TN *	0.00	\$0.00	0.00	\$0.00	0.00	\$0.00	0.00	\$0.00	685.40	** 685.40	
Hatchie	0.00	\$0.00	0.00	\$0.00	11,220.73	\$1,862,329.25	0.00	\$0.00	335.37	11,556.10	
Lake Isom	0.00	\$0.00	0.00	\$0.00	344.65	\$27,290.72	0.00	\$0.00	1,513.73	1,858.38	
Lower Hatchie	0.00	\$0.00	0.00	\$0.00	8,889.46	\$12,854,392.00	0.00	\$0.00	4,875.44	13,764.90	
Reelfoot *	0.00	\$0.00	0.00	\$0.00	496.53	\$109,531.78	0.00	\$0.00	7,914.17	(22) 8,410.70	
Tennessee	0.00	\$0.00	0.00	\$0.00	430.45	\$72,151.10	0.00	\$0.00	50,929.01	51,359.46	
State Total	6	0.00	\$0.00	0.00	37,107.42	\$33,283,463.57	0.00	\$0.00	85,907.92	123,015.34	
Texas											
Anahuac	1,114.13	\$1,562,689.88	0.00	\$0.00	31,081.83	\$14,014,754.08	63.09	\$0.00	5,720.06	36,864.98	
Aransas	0.00	\$0.00	0.00	\$0.00	49,235.68	\$1,833,531.80	0.00	\$0.00	65,421.37	114,657.05	
Big Boggy	0.00	\$0.00	0.00	\$0.00	4,113.41	\$2,374,594.19	258.23	\$58,112.00	154.53	4,526.17	
Brazoria	0.00	\$0.00	0.00	\$0.00	42,641.23	\$13,822,482.26	0.00	\$0.00	1,772.65	44,413.88	
Buffalo Lake	0.00	\$0.00	0.00	\$0.00	0.00	\$0.00	0.00	\$0.00	7,664.16	7,664.16	
FSA Interest TX *	0.00	\$0.00	0.00	\$0.00	0.00	\$0.00	0.00	\$0.00	2,776.21	** 2,776.21	
Hagerman	0.00	\$0.00	0.00	\$0.00	0.00	\$0.00	0.00	\$0.00	11,319.84	11,319.84	
Laguna Atascosa	0.00	\$0.00	0.00	\$0.00	77,309.93	\$12,475,079.19	0.00	\$0.00	12,535.34	89,845.27	
Little Sandy	0.00	\$0.00	0.00	\$0.00	0.00	\$0.00	3,802.00	\$0.00	0.00	3,802.00	
Lower Rio Grande Valley	0.00	\$0.00	0.00	\$0.00	0.00	\$0.00	0.00	\$0.00	93,181.81	93,181.81	
McFaddin	0.00	\$0.00	0.00	\$0.00	51,112.55	\$10,956,489.20	7,748.88	\$1,394,170.00	0.00	58,861.43	
Moody	0.00	\$0.00	0.00	\$0.00	0.00	\$0.00	3,516.87	\$0.00	0.00	3,516.87	
Muleshoe	0.00	\$0.00	0.00	\$0.00	2,154.80	\$25,740.00	0.00	\$0.00	4,294.30	6,449.10	
San Bernard	2,191.10	\$2,007,132.00	0.00	\$0.00	46,574.63	\$33,586,347.07	2.32	\$1.00	15,467.28	62,044.23	
Santa Ana	0.00	\$0.00	0.00	\$0.00	1,980.50	\$23,766.00	0.00	\$0.00	107.00	2,087.50	
Texas Point	0.00	\$0.00	0.00	\$0.00	8,952.02	\$1,719,000.00	0.00	\$0.00	0.00	8,952.02	
Trinity River	275.28	\$308,700.00	1.44	\$1,611.54	15,624.86	\$12,831,956.99	4.02	\$3,857.54	9,868.10	25,496.98	
State Total	16	3,580.51	\$3,878,521.88	1.44	\$1,611.54	330,781.44	\$103,663,740.78	15,395.41	\$1,456,140.54	230,282.65	576,459.50
Utah											
Bear River	403.20	\$1,209,600.00	0.00	\$0.00	28,080.03	\$9,304,649.47	45.76	\$740.00	48,617.12	76,742.91	
Fish Springs	0.00	\$0.00	0.00	\$0.00	3,774.82	\$93,325.00	0.00	\$73.00	14,217.42	17,992.24	
FSA Interest UT *	0.00	\$0.00	0.00	\$0.00	0.00	\$0.00	0.00	\$0.00	442.52	** 442.52	
Ouray	0.00	\$0.00	0.00	\$8,870.00	5,014.98	\$461,084.25	1,484.46	\$501,793.15	3,116.90	9,616.34	
State Total	3	403.20	\$1,209,600.00	0.00	\$8,870.00	36,869.83	\$9,859,058.72	1,530.22	\$502,606.15	66,393.96	104,794.01
Vermont											
FSA Interest VT *	0.00	\$0.00	0.00	\$0.00	0.00	\$0.00	0.00	\$0.00	71.00	** 71.00	
Missisquoi	0.00	\$0.00	0.00	\$0.00	6,324.65	\$582,134.27	0.00	\$0.00	905.04	7,229.69	
Silvio O. Conte	0.00	\$0.00	0.00	\$0.00	17,189.21	\$4,337,574.00	0.00	\$0.00	9,697.37	(43)26,886.58	
State Total	2	0.00	\$0.00	0.00	23,513.86	\$4,919,708.27	0.00	\$0.00	10,673.41	34,187.27	
Virginia											
Back Bay	0.00	\$0.00	0.00	\$0.00	7,482.09	\$5,160,662.00	0.00	\$0.00	1,693.62	9,175.71	
Chincoteague	0.00	\$0.00	0.00	\$0.00	9,513.02	\$635,403.91	0.00	\$0.00	4,101.66	(23)13,614.68	
Eastern Shore of Virginia	0.00	\$0.00	0.00	\$0.00	522.50	\$1,844,370.00	0.00	\$0.00	920.03	1,442.53	
Fisherman Island	0.00	\$0.00	0.00	\$0.00	825.00	\$1,600,000.00	0.00	\$0.00	1,071.30	1,896.30	
FSA Interest VA *	0.00	\$0.00	0.00	\$0.00	0.00	\$0.00	0.00	\$0.00	133.70	** 133.70	
Great Dismal Swamp *	0.00	\$0.00	0.00	\$0.00	3,128.95	\$4,233,762.98	0.00	\$0.00	82,196.69	(24)85,325.64	
Mackay Island *	0.00	\$0.00	0.00	\$0.00	874.40	\$26,855.75	0.00	\$0.00	7.74	(24) 882.14	
Martin *	0.00	\$0.00	0.00	\$0.00	0.00	\$0.00	0.00	\$0.00	145.62	(23) 145.62	
Nansemond	0.00	\$0.00	0.00	\$0.00	0.00	\$0.00	0.00	\$0.00	422.99	422.99	

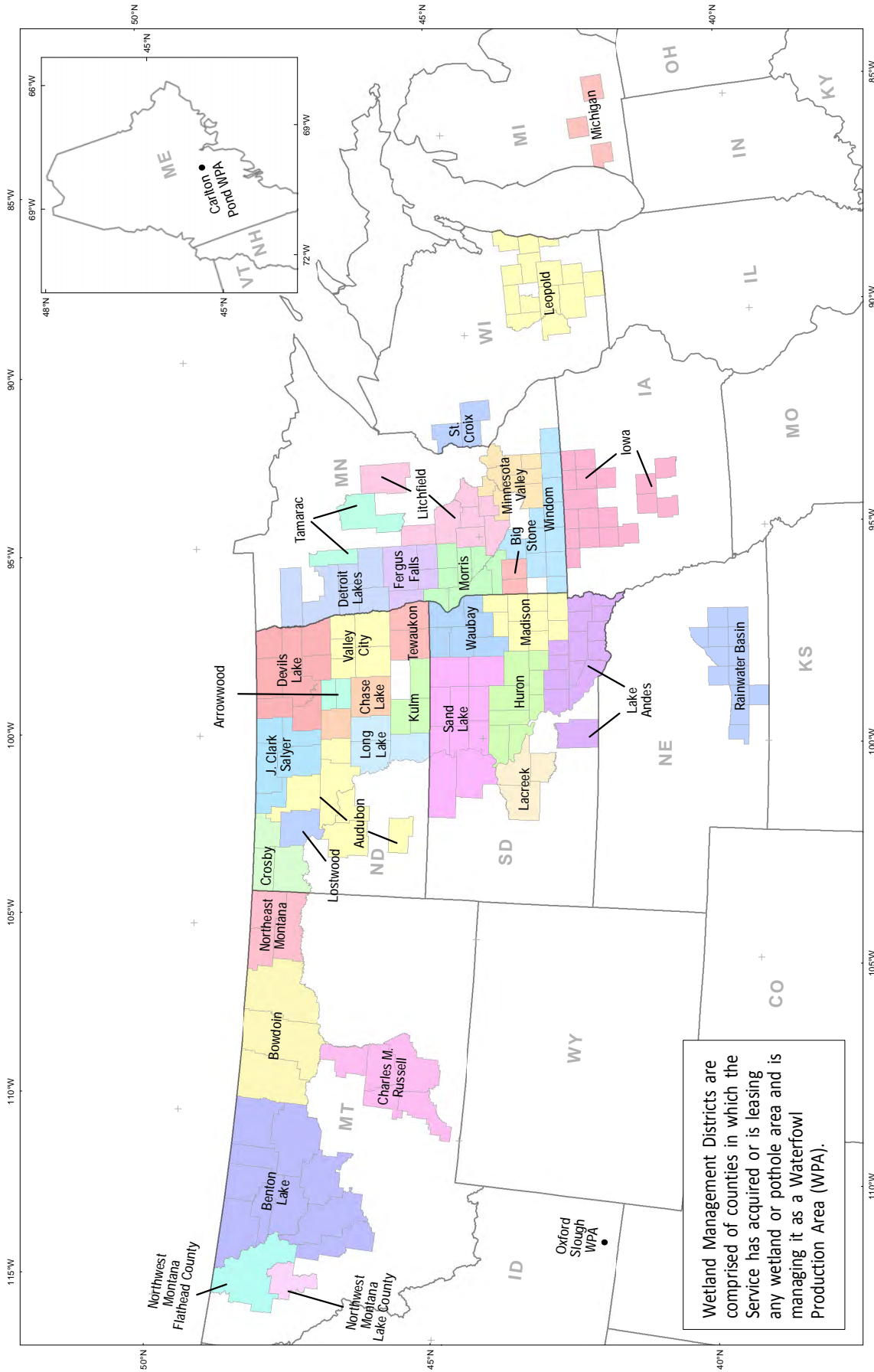
Table 1. National Migratory Bird Refuges

State and Unit	FISCAL YEAR MBCF ACQUISITION				CUMULATIVE TOTALS AT END OF FISCAL YEAR						
	Purchased		Easement or Lease		MBCF				All Other Acres	Total Acres	
	Acres	Cost	Acres	Cost	Acres	Cost	Acres	Cost			
Virginia (Continued)											
Occoquan Bay	0.00	\$0.00	0.00	\$0.00	0.00	\$0.00	0.00	\$0.00	642.07	642.07	
Plum Tree Island	0.00	\$0.00	0.00	\$0.00	0.00	\$0.00	0.00	\$0.00	3,501.68	3,501.68	
Presquile	0.00	\$0.00	0.00	\$0.00	0.00	\$0.00	0.00	\$0.00	1,328.92	1,328.92	
Rappahannock River Valley	0.00	\$0.00	0.00	\$0.00	1,287.30	\$2,270,200.00	123.40	\$585,001.00	7,307.72	8,718.42	
Wallops Island	0.00	\$0.00	0.00	\$0.00	0.00	\$0.00	0.00	\$0.00	373.00	373.00	
State Total	10	0.00	\$0.00	0.00	\$0.00	\$23,633.26	\$15,771,254.64	123.40	\$585,001.00	103,846.74	127,603.40
Washington											
Columbia	0.00	\$0.00	0.00	\$0.00	11,361.77	\$426,346.04	0.00	\$0.00	16,933.76	28,295.53	
Conboy Lake	0.00	\$0.00	0.00	\$0.00	5,964.96	\$2,289,100.00	718.29	\$400,000.00	388.45	7,071.70	
FSA Interest WA *	0.00	\$0.00	0.00	\$0.00	0.00	\$0.00	0.00	\$0.00	1,497.86	** 1,497.86	
Little Pend Oreille	0.00	\$0.00	0.00	\$0.00	4,216.65	\$27,414.00	0.00	\$0.00	38,376.92	42,593.57	
McNary	0.00	\$0.00	0.00	\$0.00	185.16	\$865.00	0.00	\$0.00	14,481.23	14,666.39	
Nisqually	0.00	\$0.00	0.00	\$0.00	2,494.24	\$3,861,990.17	0.55	\$3,000.00	2,034.42	4,529.21	
Pierce	0.00	\$0.00	0.00	\$0.00	0.00	\$0.00	0.00	\$0.00	329.38	329.38	
Ridgefield	0.00	\$0.00	0.00	\$0.00	4,670.16	\$4,033,600.00	1.74	\$21.00	556.20	5,228.10	
Saddle Mountain	0.00	\$0.00	0.00	\$0.00	0.00	\$0.00	0.00	\$0.00	161,485.93	161,485.93	
San Juan Islands	0.00	\$0.00	0.00	\$0.00	0.00	\$0.00	0.00	\$0.00	448.50	448.50	
Steigerwald Lake	0.00	\$0.00	0.00	\$0.00	50.00	\$500,000.00	0.00	\$0.00	996.02	1,046.02	
Toppenish	0.00	\$0.00	0.00	\$0.00	1,762.80	\$599,137.00	1.29	\$0.00	214.75	1,978.84	
Turnbull	405.38	\$547,000.00	0.00	\$0.00	14,314.70	\$1,054,411.38	0.00	\$0.00	4,771.99	19,086.69	
Umatilla *	0.00	\$0.00	0.00	\$0.00	0.00	\$0.00	0.00	\$0.00	14,875.83	(4)14,875.83	
Willapa	0.00	\$0.00	0.00	\$0.00	8,616.42	\$5,122,010.74	0.12	\$0.00	7,819.09	16,435.63	
State Total	13	405.38	\$547,000.00	0.00	\$0.00	\$53,636.86	\$17,914,874.33	721.99	\$403,021.00	265,210.33	319,569.18
West Virginia											
Canaan Valley	0.00	\$0.00	0.00	\$0.00	683.79	\$2,296,884.98	0.00	\$0.00	15,930.10	16,613.89	
FSA Interest WV *	0.00	\$0.00	0.00	\$0.00	0.00	\$0.00	0.00	\$0.00	8.37	** 8.37	
State Total	1	0.00	\$0.00	0.00	\$0.00	\$683.79	\$2,296,884.98	0.00	\$0.00	15,938.47	16,622.26
Wisconsin											
FSA Interest WI *	0.00	\$0.00	0.00	\$0.00	0.00	\$0.00	0.00	\$0.00	6,126.70	** 6,126.70	
Horicon	0.00	\$0.00	0.00	\$0.00	21,098.37	\$555,238.34	29.00	\$356.00	286.59	21,413.96	
Necedah	0.00	\$0.00	0.00	\$0.00	244.92	\$3,194.26	0.00	\$0.00	43,470.94	43,715.86	
Trempealeau	0.00	\$0.00	0.00	\$0.00	593.89	\$0.00	0.00	\$0.00	5,806.04	6,399.93	
State Total	3	0.00	\$0.00	0.00	\$21,937.18	\$558,432.60	29.00	\$356.00	55,690.27	77,656.45	
Wyoming											
Bamforth	0.00	\$0.00	0.00	\$0.00	964.80	\$6,368.00	0.00	\$0.00	201.23	1,166.03	
Cokeville Meadows	0.00	\$0.00	0.00	\$0.00	4,738.89	\$2,101,412.61	320.00	\$36,037.42	4,200.43	9,259.32	
FSA Interest WY *	0.00	\$0.00	0.00	\$0.00	0.00	\$0.00	0.00	\$0.00	3,287.75	** 3,287.75	
Hutton Lake	0.00	\$0.00	0.00	\$0.00	1,815.49	\$7,944.00	0.00	\$0.00	152.85	1,968.34	
Pathfinder	0.00	\$0.00	0.00	\$0.00	0.00	\$0.00	0.00	\$0.00	16,806.90	16,806.90	
Seedskafee	0.00	\$0.00	0.00	\$0.00	0.00	\$0.00	0.00	\$0.00	27,235.22	27,235.22	
State Total	5	0.00	\$0.00	0.00	\$7,519.18	\$2,115,724.61	320.00	\$36,037.42	51,884.38	59,723.56	
Grand Total	372	9,994.35	\$13,425,505.88	557.64	\$1,292,873.02	2,392,713.75	\$605,851,858.10	132,617.23	\$96,390,495.34	7,755,496.76	10,280,827.74

- | | | |
|---|--|--|
| (1) Also in Georgia | (16) Also in Virginia | (36) Also in New Hampshire |
| (2) " " California | (17) " " New Mexico | (37) " " Maine |
| (3) " " Arizona | (18) " " Illinois, Iowa, and Wisconsin | (38) " " West Virginia and Pennsylvania |
| (4) " " Oregon | (19) " " Iowa | (39) " " New York |
| (5) " " Alabama | (20) " " South Dakota | (40) " " New Jersey |
| (6) " " Florida | (21) " " Idaho | (41) " " New Hampshire and Vermont |
| (7) " " South Carolina | (22) " " Kentucky | (42) " " Massachusetts and Vermont |
| (8) " " Missouri | (23) " " Maryland | (43) " " Massachusetts and New Hampshire |
| (9) " " Iowa, Minnesota, and Wisconsin | (24) " " North Carolina | |
| (10) " " Nebraska | (25) " " Illinois, Iowa, and Minnesota | * - Counted in another state |
| (11) " " Illinois | (26) " " Washington | ** - Denotes interests transferred by the FSA |
| (12) " " Texas | (27) " " Mississippi | FSA - Farm Service Agency (Formerly Farmers Home |
| (13) " " Illinois, Minnesota, and Wisconsin | (28) " " Louisiana | Administration, Department of Agriculture)* |
| (14) " " Tennessee | (34) " " West Virginia and Kentucky | |
| (15) " " Nevada | (35) " " Pennsylvania and Kentucky | |

Negative numbers in the *Fiscal Year MBCF Acquisition* acreage totals reflect acres disposed through land-for-land exchanges, where the Service exchanged previously acquired refuge lands for other lands to consolidate land holdings, improve land management efficiency, and eliminate confusion for the visiting public.

Wetland Management Districts Map



Wetland Management Districts are comprised of counties in which the Service has acquired or is leasing any wetland or pothole area and is managing it as a Waterfowl Production Area (WPA).

PRODUCED IN THE DIVISION OF REALTY
 FALLS CHURCH, VA
 LAND STATUS CURRENT TO: 9/30/2014
 BASEMAP: ESRI
 ALBERS PROJECTION (USGS)
 MAP NAME: WMDS2015.pdf

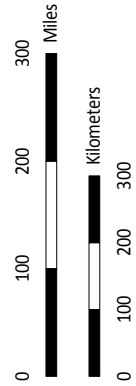


Table 2. Waterfowl Production Areas

State and Unit	FISCAL YEAR MBCF ACQUISITION				CUMULATIVE TOTALS AT END OF FISCAL YEAR					
	Purchased		Easement or Lease		MBCF				All Other Acres	Total Acres
	Acres	Cost	Acres	Cost	Purchased		Easement or Lease			
				Acres	Cost	Acres	Cost			
Idaho										
Oxford Slough WPA	0.00	\$0.00	0.00	\$0.00	1,878.41	\$530,000.00	0.00	\$0.00	0.00	1,878.41
<i>WPA Total:</i> 1	<i>0.00</i>	<i>\$0.00</i>	<i>0.00</i>	<i>\$0.00</i>	<i>1,878.41</i>	<i>\$530,000.00</i>	<i>0.00</i>	<i>\$0.00</i>	<i>0.00</i>	<i>1,878.41</i>
State Total 1	0.00	\$0.00	0.00	\$0.00	1,878.41	\$530,000.00	0.00	\$0.00	0.00	1,878.41
Iowa										
<i>Iowa WMD</i>										
Boone	0.00	\$0.00	0.00	\$0.00	391.33	\$599,600.00	0.00	\$0.00	0.00	391.33
Buena Vista	0.00	\$0.00	0.00	\$0.00	69.09	\$169,000.00	0.00	\$0.00	0.00	69.09
Cerro Gordo	0.00	\$0.00	0.00	\$0.00	2,720.25	\$3,284,677.82	5.70	\$10,200.00	0.00	2,725.95
Clay	0.00	\$0.00	0.00	\$0.00	989.98	\$1,759,306.85	0.00	\$0.00	0.00	989.98
Dickinson	0.00	\$0.00	0.00	\$0.00	5,717.48	\$10,542,966.00	84.00	\$37,725.00	649.29	6,450.77
Emmet	0.00	\$0.00	0.00	\$0.00	2,055.04	\$3,965,475.00	16.00	\$40,000.00	249.99	2,321.03
Greene	0.00	\$0.00	0.00	\$0.00	1,133.43	\$3,305,500.00	0.00	\$0.00	0.00	1,133.43
Guthrie	0.00	\$0.00	0.00	\$0.00	302.53	\$609,740.00	0.00	\$0.00	0.00	302.53
Hancock	0.00	\$0.00	0.00	\$0.00	802.70	\$545,480.26	7.00	\$2,250.00	27.80	837.50
Kossuth	66.19	\$650,000.00	0.00	\$0.00	3,586.05	\$8,645,046.98	23.00	\$28,775.00	26.87	3,635.92
Osceola	0.00	\$0.00	0.00	\$0.00	0.00	\$0.00	37.00	\$17,250.00	4.00	41.00
Palo Alto	0.00	\$0.00	0.00	\$0.00	731.81	\$1,180,592.65	176.00	\$222,850.00	58.00	965.81
Pocahontas	0.00	\$0.00	0.00	\$0.00	654.16	\$1,716,400.00	0.00	\$0.00	0.00	654.16
Polk	0.00	\$0.00	0.00	\$0.00	110.00	\$241,500.00	0.00	\$0.00	0.00	110.00
Sac	0.00	\$0.00	0.00	\$0.00	930.45	\$2,493,280.00	0.00	\$0.00	168.09	1,098.54
Winnebago	99.56	\$327,400.00	0.00	\$0.00	1,116.51	\$1,465,700.31	105.00	\$54,025.00	0.00	1,221.51
Worth	0.00	\$0.00	0.00	\$0.00	1,491.84	\$1,088,329.87	18.00	\$9,250.00	6.66	1,516.50
Wright	149.07	\$1,330,000.00	0.00	\$0.00	1,845.72	\$3,945,725.00	0.00	\$0.00	0.00	1,845.72
<i>WMD Total:</i> 18	<i>314.82</i>	<i>\$2,307,400.00</i>	<i>0.00</i>	<i>\$0.00</i>	<i>24,648.37</i>	<i>\$45,558,320.74</i>	<i>471.70</i>	<i>\$422,325.00</i>	<i>1,190.70</i>	<i>26,310.77</i>
State Total 18	314.82	\$2,307,400.00	0.00	\$0.00	24,648.37	\$45,558,320.74	471.70	\$422,325.00	1,190.70	26,310.77
Maine										
Carlton Pond WPA	0.00	\$0.00	0.00	\$0.00	1,068.21	\$18,277.08	0.00	\$0.00	0.00	1,068.21
<i>WPA Total:</i> 1	<i>0.00</i>	<i>\$0.00</i>	<i>0.00</i>	<i>\$0.00</i>	<i>1,068.21</i>	<i>\$18,277.08</i>	<i>0.00</i>	<i>\$0.00</i>	<i>0.00</i>	<i>1,068.21</i>
State Total 1	0.00	\$0.00	0.00	\$0.00	1,068.21	\$18,277.08	0.00	\$0.00	0.00	1,068.21
Michigan										
<i>Michigan WMD</i>										
Barry	0.00	\$0.00	0.00	\$0.00	110.00	\$550,000.00	0.00	\$0.00	271.30	381.30
Jackson	0.00	\$0.00	0.00	\$0.00	160.00	\$170,000.00	0.00	\$0.00	500.21	660.21
Van Buren	0.00	\$0.00	0.00	\$0.00	77.08	\$43,600.00	0.00	\$0.00	317.32	394.40
<i>WMD Total:</i> 3	<i>0.00</i>	<i>\$0.00</i>	<i>0.00</i>	<i>\$0.00</i>	<i>347.08</i>	<i>\$763,600.00</i>	<i>0.00</i>	<i>\$0.00</i>	<i>1,088.83</i>	<i>1,435.91</i>
State Total 3	0.00	\$0.00	0.00	\$0.00	347.08	\$763,600.00	0.00	\$0.00	1,088.83	1,435.91
Minnesota										
Marshall WPA	0.00	\$0.00	0.00	\$0.00	510.00	\$400,400.00	0.00	\$0.00	0.00	510.00
<i>WPA Total:</i> 1	<i>0.00</i>	<i>\$0.00</i>	<i>0.00</i>	<i>\$0.00</i>	<i>510.00</i>	<i>\$400,400.00</i>	<i>0.00</i>	<i>\$0.00</i>	<i>0.00</i>	<i>510.00</i>
<i>Big Stone WMD</i>										
Lincoln	0.00	\$0.00	59.99	\$201,625.00	1,254.01	\$1,218,200.00	1,841.12	\$1,473,971.04	226.25	3,321.38
Lyon	0.00	\$0.00	0.00	\$0.00	1,791.22	\$2,042,220.00	391.20	\$238,105.00	0.00	2,182.42
<i>WMD Total:</i> 2	<i>0.00</i>	<i>\$0.00</i>	<i>59.99</i>	<i>\$201,625.00</i>	<i>3,045.23</i>	<i>\$3,260,420.00</i>	<i>2,232.32</i>	<i>\$1,712,076.04</i>	<i>226.25</i>	<i>5,503.80</i>
<i>Detroit Lakes WMD</i>										
Becker	0.00	\$0.00	0.00	\$0.00	13,213.33	\$5,379,470.56	2,866.93	\$1,375,560.00	47.33	16,127.59
Clay	0.00	\$0.00	103.52	\$92,750.00	10,787.94	\$3,664,545.18	3,726.98	\$1,030,622.15	1,746.96	16,261.88
Mahnomen	0.00	\$0.00	0.00	\$0.00	6,087.33	\$1,183,558.90	5,244.22	\$464,361.00	1,131.00	12,462.55
Norman	0.00	\$0.00	0.00	\$0.00	1,120.00	\$400,000.00	0.00	\$0.00	463.88	1,583.88
Polk	24.88	\$124,200.00	0.00	\$0.00	13,163.66	\$3,124,752.86	2,279.66	\$676,636.34	284.04	15,727.36
<i>WMD Total:</i> 5	<i>24.88</i>	<i>\$124,200.00</i>	<i>103.52</i>	<i>\$92,750.00</i>	<i>44,372.26</i>	<i>\$13,752,327.50</i>	<i>14,117.79</i>	<i>\$3,547,179.49</i>	<i>3,673.21</i>	<i>62,163.26</i>
<i>Fergus Falls WMD</i>										
Douglas	0.00	\$0.00	38.59	\$53,100.00	9,913.86	\$3,486,143.20	6,140.95	\$1,036,205.98	710.01	16,764.82
Grant	0.00	\$0.00	-159.00	\$0.00	10,498.09	\$3,992,838.12	3,735.80	\$1,486,029.00	599.46	14,833.35
Otter Tail	3.97	\$25,000.00	128.43	\$149,300.00	22,710.79	\$10,517,352.26	16,488.92	\$5,688,312.25	1,329.55	40,529.26
Wilkin	0.00	\$0.00	0.00	\$0.00	2,432.80	\$900,064.35	309.00	\$93,750.00	95.10	2,836.90
<i>WMD Total:</i> 4	<i>3.97</i>	<i>\$25,000.00</i>	<i>8.02</i>	<i>\$202,400.00</i>	<i>45,555.54</i>	<i>\$18,896,397.93</i>	<i>26,674.67</i>	<i>\$8,304,297.23</i>	<i>2,734.12</i>	<i>74,964.33</i>
<i>Litchfield WMD</i>										
Aitkin	0.00	\$0.00	0.00	\$0.00	69.86	\$28,000.00	0.00	\$0.00	42.00	111.86

Table 2. Waterfowl Production Areas

State and Unit	FISCAL YEAR MBCF ACQUISITION				CUMULATIVE TOTALS AT END OF FISCAL YEAR					
	Purchased		Easement or Lease		MBCF				All Other Acres	Total Acres
	Acres	Cost	Acres	Cost	Acres	Cost	Easement or Lease	Cost		
Minnesota (Continued)										
<i>Litchfield WMD</i>										
Kandiyohi	0.00	\$0.00	130.49	\$428,825.00	13,901.67	\$6,566,593.93	5,033.29	\$1,991,076.80	341.01	19,275.97
McLeod	0.00	\$0.00	33.00	\$79,200.00	1,720.79	\$3,646,793.00	1,111.46	\$1,271,544.90	0.00	2,832.25
Meeker	0.00	\$0.00	95.37	\$258,425.00	4,866.29	\$4,157,389.10	2,833.42	\$1,995,392.00	40.61	7,740.32
Renville	0.00	\$0.00	0.00	\$0.00	1,658.03	\$2,211,040.00	0.00	\$0.00	165.67	1,823.70
Stearns	0.00	\$0.00	0.00	\$0.00	9,175.07	\$3,127,833.87	1,602.81	\$734,660.70	300.70	11,078.58
Todd	0.00	\$0.00	0.00	\$0.00	802.85	\$385,672.20	42.58	\$17,480.00	0.00	845.43
Wright	0.00	\$0.00	0.00	\$0.00	3,044.57	\$6,276,520.90	437.50	\$223,575.00	142.80	3,624.87
WMD Total:	8	\$0.00	258.86	\$766,450.00	35,239.13	\$26,399,843.00	11,061.06	\$6,233,729.40	1,032.79	47,332.98
<i>Minnesota Valley WMD</i>										
Blue Earth	0.00	\$0.00	0.00	\$0.00	1,182.77	\$1,657,250.00	735.61	\$1,156,550.00	138.37	2,056.75
Carver	0.00	\$0.00	0.00	\$0.00	0.00	\$0.00	47.57	\$68,976.50	219.00	266.57
Dakota	0.00	\$0.00	0.00	\$0.00	73.90	\$201,747.00	0.00	\$0.00	11.05	84.95
Le Sueur	0.00	\$0.00	0.00	\$0.00	356.11	\$525,754.50	242.15	\$222,878.50	85.88	684.14
Rice	0.00	\$0.00	0.00	\$0.00	315.60	\$438,999.35	580.79	\$1,020,141.25	127.50	1,023.89
Scott	0.00	\$0.00	0.00	\$0.00	40.00	\$109,200.00	164.21	\$248,001.00	82.91	287.12
Sibley	0.00	\$0.00	13.76	\$61,225.00	793.52	\$1,007,681.32	267.01	\$234,415.00	112.36	1,172.89
Steele	0.00	\$0.00	0.00	\$0.00	650.11	\$833,744.00	0.00	\$0.00	16.59	666.70
Waseca	0.00	\$0.00	0.00	\$0.00	260.00	\$646,000.00	0.00	\$0.00	40.00	300.00
WMD Total:	9	\$0.00	13.76	\$61,225.00	3,672.01	\$5,420,376.17	2,037.34	\$2,950,962.25	833.66	6,543.01
<i>Morris WMD</i>										
Big Stone	0.00	\$0.00	57.27	\$94,250.00	11,555.04	\$2,413,245.83	11,060.54	\$5,048,706.16	206.97	22,822.55
Chippewa	0.00	\$0.00	0.00	\$0.00	244.10	\$127,050.00	115.10	\$105,525.00	0.00	359.20
Lac Qui Parle	0.00	\$0.00	151.47	\$331,400.00	3,808.79	\$1,002,339.73	2,171.53	\$1,326,591.00	779.01	6,759.33
Pope	0.00	\$0.00	0.00	\$0.00	13,120.49	\$3,066,945.07	11,906.00	\$4,056,136.70	584.45	25,610.94
Stevens	0.00	\$0.00	0.00	\$0.00	9,552.66	\$3,463,001.64	1,242.87	\$386,515.00	338.93	11,134.46
Swift	0.00	\$0.00	0.00	\$0.00	7,635.58	\$1,860,080.17	2,194.97	\$1,028,119.40	320.00	10,150.55
Traverse	0.00	\$0.00	0.00	\$0.00	4,105.55	\$1,469,588.63	1,443.61	\$307,665.00	0.00	5,549.16
Yellow Medicine	0.00	\$0.00	0.00	\$0.00	1,082.68	\$879,683.30	1,273.77	\$963,152.40	332.00	2,688.45
WMD Total:	8	\$0.00	208.74	\$425,650.00	51,104.89	\$14,281,934.37	31,408.39	\$13,222,410.66	2,561.36	85,074.64
<i>Tamarac WMD</i>										
Cass	0.00	\$0.00	0.00	\$0.00	0.00	\$0.00	43.00	\$6,000.00	0.00	43.00
Clearwater	0.00	\$0.00	271.23	\$155,950.00	0.00	\$0.00	1,454.73	\$455,125.00	304.00	1,758.73
WMD Total:	2	\$0.00	271.23	\$155,950.00	0.00	\$0.00	1,497.73	\$461,125.00	304.00	1,801.73
<i>Windom WMD</i>										
Cottonwood	0.00	\$0.00	0.00	\$0.00	3,137.96	\$1,681,553.85	233.12	\$132,625.00	354.00	3,725.08
Faribault	0.00	\$0.00	0.00	\$0.00	830.06	\$800,991.80	129.37	\$110,775.00	80.00	1,039.43
Freeborn	259.96	\$636,600.00	0.00	\$0.00	2,139.90	\$3,289,117.25	132.99	\$161,650.00	290.61	2,563.50
Jackson	0.00	\$0.00	49.67	\$302,725.00	4,695.00	\$4,497,146.28	477.69	\$961,550.00	60.07	5,232.76
Martin	0.00	\$0.00	0.00	\$0.00	333.89	\$645,369.60	271.65	\$287,184.39	43.00	648.54
Mower	0.00	\$0.00	0.00	\$0.00	0.00	\$0.00	0.00	\$0.00	137.94	137.94
Murray	0.00	\$0.00	0.00	\$0.00	2,221.94	\$2,691,477.00	139.04	\$304,725.00	155.64	2,516.62
Nobles	0.00	\$0.00	0.00	\$0.00	643.40	\$1,098,202.00	26.00	\$15,600.00	0.00	669.40
Redwood	0.00	\$0.00	0.00	\$0.00	0.00	\$0.00	62.02	\$48,875.00	0.00	62.02
Rock	0.00	\$0.00	0.00	\$0.00	0.00	\$0.00	104.79	\$233,950.00	0.00	104.79
Watonwan	0.00	\$0.00	0.00	\$0.00	56.65	\$31,157.50	168.42	\$112,209.80	0.00	225.07
WMD Total:	11	\$636,600.00	49.67	\$302,725.00	14,058.80	\$14,735,015.28	1,745.09	\$2,369,144.19	1,121.26	16,925.15
State Total	50	\$785,800.00	973.79	\$2,208,775.00	197,557.86	\$97,146,714.25	90,774.39	\$38,800,924.26	12,486.65	300,818.90
Montana										
<i>Benton Lake WMD</i>										
Cascade	0.00	\$0.00	0.00	\$0.00	727.46	\$299,606.00	78.00	\$15,550.00	193.50	998.96
Chouteau	0.00	\$0.00	0.00	\$1,506.12	2,136.13	\$538,543.00	661.03	\$32,532.43	280.00	3,077.16
Glacier	0.00	\$0.00	0.00	\$0.00	94.20	\$17,898.00	10,146.83	\$953,495.00	96.50	10,337.53
Hill	0.00	\$0.00	0.00	\$1,332.00	0.00	\$0.00	918.00	\$93,933.00	378.93	1,296.93
Lewis and Clark	0.00	\$0.00	0.00	\$0.00	0.00	\$0.00	3,317.07	\$1,071,782.00	2,810.88	6,127.95
Liberty	0.00	\$0.00	0.00	\$0.00	0.00	\$0.00	428.00	\$14,100.00	0.00	428.00
Pondera	0.00	\$0.00	0.00	\$0.00	640.00	\$93,000.00	8,715.01	\$1,990,000.00	94.96	9,449.97
Powell	0.00	\$0.00	0.00	\$0.00	1,886.81	\$2,130,084.00	23,203.06	\$6,650,635.00	4,807.60	29,897.47

Table 2. Waterfowl Production Areas

State and Unit	FISCAL YEAR MBCF ACQUISITION				CUMULATIVE TOTALS AT END OF FISCAL YEAR						
	Purchased		Easement or Lease		MBCF				All Other Acres	Total Acres	
	Acres	Cost	Acres	Cost	Purchased		Easement or Lease				
				Acres	Cost	Acres	Cost	Acres	Cost		
Montana (Continued)											
<i>Benton Lake WMD</i>											
Teton *	0.00	\$0.00	0.00	\$0.00	1,486.05	\$376,253.00	5,413.13	\$241,818.00	921.64		7,820.82
Toole	0.00	\$0.00	0.00	\$0.00	4,610.48	\$1,003,964.00	12,161.09	\$916,245.00	5.28		16,776.85
WMD Total:	10	\$0.00	\$0.00	\$2,838.12	11,581.13	\$4,459,348.00	65,041.22	\$11,980,090.43	9,589.29		86,211.64
<i>Bowdoin WMD</i>											
Blaine	0.00	\$0.00	293.51	\$46,400.00	2,435.26	\$167,340.00	8,077.44	\$942,795.00	12,130.00		22,642.70
Phillips *	242.18	\$317,000.00	2,261.00	\$447,604.08	7,739.96	\$2,034,063.00	60,814.52	\$7,341,345.18	13,372.71		81,927.19
Valley	0.00	\$0.00	0.00	\$0.00	0.00	\$0.00	201.00	\$28,160.00	0.00		201.00
WMD Total:	3	\$317,000.00	2,554.51	\$494,004.08	10,175.22	\$2,201,403.00	69,092.96	\$8,312,300.18	25,502.71		104,770.89
<i>Charles M. Russell WMD</i>											
Golden Valley	0.00	\$0.00	0.00	\$387.94	760.27	\$76,427.00	160.00	\$7,853.05	0.00		920.27
Musselshell	0.00	\$0.00	0.00	\$864.00	532.45	\$163,001.00	160.00	\$15,275.20	0.00		692.45
Petroleum	0.00	\$0.00	0.00	\$0.00	40.00	\$23,800.00	0.00	\$0.00	0.00		40.00
Stillwater	0.00	\$0.00	0.00	\$0.00	1,828.10	\$207,625.00	0.00	\$0.00	0.38		1,828.48
Yellowstone	0.00	\$0.00	0.00	\$0.00	486.42	\$55,600.00	0.00	\$0.00	0.00		486.42
WMD Total:	5	\$0.00	\$0.00	\$1,251.94	3,647.24	\$526,453.00	320.00	\$23,128.25	0.38		3,967.62
<i>NE Montana WMD</i>											
Daniels	0.00	\$0.00	0.00	\$0.00	1,080.58	\$97,669.00	472.65	\$41,125.00	546.52		2,099.75
Roosevelt	0.00	\$0.00	0.00	\$0.00	179.20	\$14,000.00	7,402.42	\$392,500.00	0.00		7,581.62
Sheridan	0.00	\$0.00	0.00	\$0.00	9,328.01	\$950,442.23	10,030.20	\$699,025.00	2,677.13		22,035.34
WMD Total:	3	\$0.00	\$0.00	\$0.00	10,587.79	\$1,062,111.23	17,905.27	\$1,132,650.00	3,223.65		31,716.71
<i>NW Montana - Flathead WMD</i>											
Flathead	0.00	\$0.00	0.00	\$0.00	4,410.31	\$2,246,518.00	0.00	\$0.00	996.51		5,406.82
WMD Total:	1	\$0.00	\$0.00	\$0.00	4,410.31	\$2,246,518.00	0.00	\$0.00	996.51		5,406.82
<i>NW Montana - Lake WMD</i>											
Lake *	0.00	\$0.00	0.00	\$0.00	1,480.86	\$1,460,555.00	4,131.61	\$3,103,430.00	1,949.14		7,561.61
WMD Total:	1	\$0.00	\$0.00	\$0.00	1,480.86	\$1,460,555.00	4,131.61	\$3,103,430.00	1,949.14		7,561.61
State Total	23	\$317,000.00	2,554.51	\$498,094.14	41,882.55	\$11,956,388.23	156,491.06	\$24,551,598.86	41,261.68		239,635.29
Nebraska											
<i>Rainwater Basin WMD</i>											
Adams	0.00	\$0.00	0.00	\$0.00	160.00	\$110,000.00	0.00	\$11,316.89	234.56		394.56
Clay	0.00	\$0.00	0.00	\$0.00	4,216.27	\$1,622,444.00	0.80	\$0.00	2,913.86		7,130.93
Fillmore	0.00	\$0.00	0.00	\$0.00	2,937.60	\$1,142,453.00	6.60	\$24.00	638.90		3,583.10
Franklin	0.00	\$0.00	0.00	\$0.00	1,625.96	\$402,698.00	0.00	\$0.00	319.24		1,945.20
Gosper	0.00	\$0.00	0.00	\$0.00	1,451.50	\$233,923.00	0.00	\$0.00	0.00		1,451.50
Hall *	0.00	\$0.00	0.00	\$0.00	328.77	\$433,000.00	0.00	\$0.00	320.70		649.47
Hamilton *	0.00	\$0.00	0.00	\$0.00	400.00	\$407,450.00	0.00	\$5,899.02	785.17		1,185.17
Kearney *	0.00	\$0.00	0.00	\$0.00	2,874.43	\$657,681.00	0.00	\$0.00	253.98		3,128.41
Phelps	0.00	\$0.00	0.00	\$0.00	4,195.14	\$3,052,111.00	0.00	\$0.00	626.39		4,821.53
Polk FSA **	0.00	\$0.00	0.00	\$0.00	0.00	\$0.00	0.00	\$0.00	140.78		140.78
Saline FSA **	0.00	\$0.00	0.00	\$0.00	0.00	\$0.00	0.00	\$0.00	104.35		104.35
Seward	0.00	\$0.00	0.00	\$0.00	278.67	\$101,746.45	0.00	\$0.00	342.31		620.98
York *	0.00	\$0.00	0.00	\$0.00	679.20	\$194,429.00	0.00	\$0.00	372.86		1,052.06
WMD Total:	11	\$0.00	\$0.00	\$0.00	19,147.54	\$8,357,935.45	7.40	\$17,239.91	7,053.10		26,208.04
State Total	11	\$0.00	\$0.00	\$0.00	19,147.54	\$8,357,935.45	7.40	\$17,239.91	7,053.10		26,208.04
North Dakota											
<i>Arrowwood WMD</i>											
Eddy *	0.00	\$0.00	252.00	\$84,975.00	4,627.21	\$498,001.00	12,062.63	\$399,970.00	446.34		17,136.18
Foster	0.00	\$0.00	822.00	\$1,820,500.00	1,487.07	\$96,568.00	7,768.00	\$2,059,515.00	0.00		9,255.07
WMD Total:	2	\$0.00	1,074.00	\$1,905,475.00	6,114.28	\$594,569.00	19,830.63	\$2,459,485.00	446.34		26,391.25
<i>Audubon WMD</i>											
Dunn FSA **	0.00	\$0.00	0.00	\$0.00	0.00	\$0.00	0.00	\$0.00	1,235.20		1,235.20
Hettinger	0.00	\$0.00	0.00	\$0.00	0.00	\$0.00	0.00	\$0.00	1,202.60		1,202.60
McLean	0.00	\$0.00	233.00	\$213,600.00	4,219.10	\$536,234.00	24,982.00	\$2,514,415.00	24,466.68		53,667.78
Mercer *	0.00	\$0.00	0.00	\$0.00	0.00	\$0.00	0.00	\$0.00	1,046.00		1,046.00
Sheridan *	0.00	\$0.00	1,183.00	\$865,100.00	7,661.50	\$468,427.00	36,095.34	\$2,930,645.00	34,044.06		77,800.90
Ward	0.00	\$0.00	0.00	\$0.00	5,868.60	\$489,211.00	38,941.61	\$1,466,039.00	14,652.98		59,463.19
WMD Total:	5	\$0.00	1,416.00	\$1,078,700.00	17,749.20	\$1,493,872.00	100,018.95	\$6,911,099.00	76,647.52		194,415.67

Table 2. Waterfowl Production Areas

State and Unit	FISCAL YEAR MBCF ACQUISITION				CUMULATIVE TOTALS AT END OF FISCAL YEAR						
	Purchased		Easement or Lease		MBCF				All Other Acres	Total Acres	
	Acres	Cost	Acres	Cost	Acres	Cost	Easement or Lease	Cost			
North Dakota (Continued)											
<i>Chase Lake Prairie Project WMD</i>											
Stutsman *	0.00	\$0.00	1,315.00	\$1,408,075.00	23,403.35	\$1,308,016.00	50,708.44	\$6,799,353.00	40,825.88	114,937.67	
Wells *	0.00	\$0.00	0.00	\$0.00	7,471.61	\$1,153,059.00	13,843.00	\$755,627.00	6,507.34	27,821.95	
WMD Total:	2	\$0.00	1,315.00	\$1,408,075.00	30,874.96	\$2,461,075.00	64,551.44	\$7,554,980.00	47,333.22	142,759.62	
<i>Crosby WMD</i>											
Burke	0.00	\$0.00	156.00	\$66,650.00	3,545.96	\$180,068.00	27,018.00	\$799,705.00	20,706.88	51,270.84	
Divide	0.00	\$0.00	0.00	\$0.00	9,444.62	\$474,790.00	35,785.69	\$812,485.00	11,557.66	56,787.97	
Williams *	0.00	\$0.00	0.00	\$0.00	4,163.17	\$278,057.00	8,542.00	\$258,075.00	1,844.86	14,550.03	
WMD Total:	3	\$0.00	156.00	\$66,650.00	17,153.75	\$932,915.00	71,345.69	\$1,870,265.00	34,109.40	122,608.84	
<i>Devils Lake WMD</i>											
Benson *	0.00	\$0.00	129.00	\$128,125.00	7,296.77	\$607,908.00	36,710.81	\$1,676,205.00	9,087.96	53,095.54	
Cavalier *	0.00	\$0.00	601.00	\$874,275.00	10,129.12	\$1,354,471.00	14,521.00	\$1,277,315.00	1,273.71	25,923.83	
Grand Forks	160.00	\$280,000.00	20.00	\$2,900.00	6,934.43	\$1,874,422.05	1,165.00	\$60,960.00	1,021.26	9,120.69	
Nelson *	0.00	\$0.00	0.00	\$0.00	3,203.23	\$174,341.00	37,856.70	\$1,336,445.00	3,500.12	44,560.05	
Pembina *	0.00	\$0.00	0.00	\$0.00	2,258.56	\$218,677.00	139.00	\$1,900.00	293.90	2,691.46	
Ramsey *	0.00	\$0.00	359.00	\$186,775.00	8,183.04	\$1,144,252.00	29,883.00	\$1,228,060.00	2,138.39	40,204.43	
Towner *	0.00	\$0.00	0.00	\$0.00	3,837.02	\$494,146.00	24,783.40	\$685,790.00	7,451.35	36,071.77	
Walsh *	0.00	\$0.00	0.00	\$0.00	1,393.19	\$98,128.00	8,463.00	\$254,150.00	1,323.63	11,179.82	
WMD Total:	8	\$280,000.00	1,109.00	\$1,192,075.00	43,235.36	\$5,966,345.05	153,521.91	\$6,520,825.00	26,090.32	222,847.59	
<i>J. Clark Salyer WMD</i>											
Bottineau *	0.00	\$0.00	8.00	\$13,425.00	2,334.06	\$200,763.00	30,376.69	\$1,772,355.00	1,393.13	34,103.88	
McHenry *	0.00	\$0.00	236.00	\$162,475.00	4,888.80	\$374,404.50	32,353.00	\$1,583,545.00	34,728.03	71,969.83	
Pierce *	0.00	\$0.00	0.00	\$0.00	8,403.66	\$936,855.00	37,869.00	\$1,641,110.00	13,253.57	59,526.23	
Renville	0.00	\$0.00	0.00	\$0.00	311.09	\$23,523.00	17,028.00	\$1,890,140.00	54.60	17,393.69	
Rolette	0.00	\$0.00	201.00	\$115,900.00	5,685.92	\$759,347.00	21,028.01	\$847,295.00	722.96	27,436.89	
WMD Total:	5	\$0.00	445.00	\$291,800.00	21,623.53	\$2,294,892.50	138,654.70	\$7,734,445.00	50,152.29	210,430.52	
<i>Kulm WMD</i>											
Dickey *	0.00	\$0.00	60.00	\$13,775.00	9,735.40	\$1,150,816.00	31,509.02	\$5,007,125.00	20,197.01	61,441.43	
La Moure *	0.00	\$0.00	2,931.00	\$5,659,775.00	4,799.96	\$505,095.00	22,504.25	\$15,138,724.00	2,629.31	29,933.52	
Logan *	0.00	\$0.00	0.00	\$0.00	11,226.24	\$1,006,598.00	39,867.73	\$1,451,786.00	24,938.19	76,032.16	
McIntosh *	0.00	\$0.00	471.00	\$205,600.00	17,373.48	\$1,368,865.00	32,116.00	\$1,473,960.00	15,657.17	65,146.65	
WMD Total:	4	\$0.00	3,462.00	\$5,879,150.00	43,135.08	\$4,031,374.00	125,997.00	\$23,071,595.00	63,421.68	232,553.76	
<i>Long Lake WMD</i>											
Burleigh *	0.00	\$0.00	7.00	\$2,225.00	9,451.44	\$1,899,164.00	28,673.10	\$1,343,575.00	39,541.09	77,665.63	
Emmons *	0.00	\$0.00	139.00	\$59,900.00	3,135.29	\$174,321.75	12,877.00	\$614,125.00	4,667.29	20,679.58	
Kidder *	0.00	\$0.00	119.00	\$93,875.00	5,547.52	\$438,439.00	65,246.02	\$1,228,180.00	50,673.11	121,466.65	
WMD Total:	3	\$0.00	265.00	\$156,000.00	18,134.25	\$2,511,924.75	106,796.12	\$3,185,880.00	94,881.49	219,811.86	
<i>Lostwood WMD</i>											
Mountrail *	0.00	\$0.00	246.00	\$238,100.00	9,905.10	\$940,661.00	32,352.00	\$1,337,906.00	37,721.28	79,978.38	
WMD Total:	1	\$0.00	246.00	\$238,100.00	9,905.10	\$940,661.00	32,352.00	\$1,337,906.00	37,721.28	79,978.38	
<i>Tewaukon WMD</i>											
Ransom	0.00	\$0.00	80.00	\$190,625.00	4,315.02	\$617,357.00	21,274.08	\$2,412,825.00	3,959.58	29,548.68	
Richland	102.80	\$409,000.00	188.00	\$400,925.00	6,523.60	\$2,085,181.00	2,632.80	\$1,053,170.00	4,886.32	14,042.72	
Sargent *	0.00	\$0.00	143.00	\$242,300.00	3,537.46	\$305,439.00	15,208.40	\$2,011,060.00	10,000.81	28,746.67	
WMD Total:	3	\$409,000.00	411.00	\$833,850.00	14,376.08	\$3,007,977.00	39,115.28	\$5,477,055.00	18,846.71	72,338.07	
<i>Valley City WMD</i>											
Barnes *	0.00	\$0.00	564.00	\$942,150.00	6,661.68	\$958,087.00	21,819.00	\$5,068,660.00	2,347.51	30,828.19	
Cass	0.00	\$0.00	0.00	\$0.00	3,439.89	\$628,344.00	1,709.00	\$133,825.00	50.90	5,199.79	
Griggs	0.00	\$0.00	376.00	\$314,100.00	3,069.46	\$373,990.00	17,370.00	\$1,054,375.00	260.25	20,699.71	
Steele	0.00	\$0.00	0.00	\$0.00	3,249.25	\$538,345.00	4,045.00	\$274,320.00	359.30	7,653.55	
Traill	0.00	\$0.00	0.00	\$0.00	719.36	\$75,109.00	233.00	\$4,830.00	1.00	953.36	
WMD Total:	5	\$0.00	940.00	\$1,256,250.00	17,139.64	\$2,573,875.00	45,176.00	\$6,536,010.00	3,018.96	65,334.60	
State Total	41	\$262.80	\$689,000.00	10,839.00	\$14,306,125.00	239,441.23	\$26,809,480.30	897,359.72	\$72,659,545.00	452,669.21	1,589,470.16
South Dakota											
<i>Huron WMD</i>											
Beadle *	0.00	\$0.00	2,004.40	\$2,122,160.00	7,419.36	\$1,855,212.69	54,253.61	\$14,754,875.00	3,399.31	65,072.28	
Buffalo	0.00	\$0.00	2,067.74	\$1,536,025.00	0.00	\$0.00	4,698.80	\$2,014,478.00	6,472.23	11,171.03	

Table 2. Waterfowl Production Areas

State and Unit	FISCAL YEAR MBCF ACQUISITION				CUMULATIVE TOTALS AT END OF FISCAL YEAR						
	Purchased		Easement or Lease		MBCF				All Other Acres	Total Acres	
	Acres	Cost	Acres	Cost	Acres	Cost	Easement or Lease	Cost			
South Dakota (Continued)											
<i>Huron WMD</i>											
Hand *	0.00	\$0.00	215.00	\$121,525.00	3,700.56	\$616,260.35	70,557.63	\$12,885,374.00	6,806.72	81,064.91	
Hughes	0.00	\$0.00	0.00	\$0.00	455.99	\$82,800.00	3,260.89	\$444,875.00	4.20	3,721.08	
Hyde *	0.00	\$0.00	1,961.00	\$1,527,850.00	0.00	\$0.00	36,928.79	\$5,823,610.00	13,493.14	50,421.93	
Jerauld *	0.00	\$0.00	1,641.36	\$1,072,400.00	1,430.40	\$217,041.00	28,456.83	\$5,088,640.00	894.70	30,781.93	
Sanborn *	0.00	\$0.00	653.65	\$617,875.00	93.00	\$5,250.00	46,098.13	\$9,348,345.00	568.20	46,759.33	
Sully *	0.00	\$0.00	0.00	\$0.00	266.48	\$9,993.00	4,072.73	\$626,590.00	1,983.48	6,322.69	
WMD Total: 8	0.00	\$0.00	8,543.15	\$6,997,835.00	13,365.79	\$2,786,557.04	248,327.41	\$50,986,787.00	33,621.98	295,315.18	
<i>Lacreek WMD</i>											
Haakon FSA **	0.00	\$0.00	0.00	\$0.00	0.00	\$0.00	0.00	\$0.00	1,806.10	1,806.10	
Jones FSA **	0.00	\$0.00	0.00	\$0.00	0.00	\$0.00	0.00	\$0.00	221.97	221.97	
Stanley FSA **	0.00	\$0.00	0.00	\$0.00	0.00	\$0.00	0.00	\$0.00	1,430.30	1,430.30	
WMD Total: 0	0.00	\$0.00	0.00	\$0.00	0.00	\$0.00	0.00	\$0.00	3,458.37	3,458.37	
<i>Lake Andes WMD</i>											
Aurora *	0.00	\$0.00	939.29	\$1,008,625.00	4,876.08	\$798,316.00	43,538.87	\$9,802,320.00	1,511.37	49,926.32	
Bon Homme *	0.00	\$0.00	0.00	\$0.00	1,174.17	\$323,624.90	403.00	\$217,130.00	323.54	1,900.71	
Brule	0.00	\$0.00	873.94	\$1,163,250.00	1,074.13	\$89,404.00	23,777.61	\$5,750,380.00	2,501.77	27,353.51	
Charles Mix *	0.00	\$0.00	0.00	\$0.00	4,110.82	\$1,162,147.00	8,988.41	\$1,819,935.00	1,546.31	14,645.54	
Clay *	0.00	\$0.00	0.00	\$0.00	40.00	\$8,000.00	7.00	\$200.00	52.50	99.50	
Davison *	0.00	\$0.00	234.50	\$370,300.00	229.92	\$24,540.00	1,173.17	\$931,965.00	175.10	1,578.19	
Douglas *	0.00	\$0.00	345.36	\$373,800.00	3,852.05	\$647,691.00	4,438.64	\$895,250.00	619.27	8,909.96	
Hanson *	0.00	\$0.00	78.01	\$35,275.00	1,075.60	\$281,853.00	4,137.41	\$1,678,405.00	132.80	5,345.81	
Hutchinson *	0.00	\$0.00	0.00	\$0.00	789.51	\$227,646.25	1,057.00	\$151,075.00	172.50	2,019.01	
Lincoln	0.00	\$0.00	0.00	\$0.00	177.22	\$39,925.00	300.50	\$112,645.00	0.00	477.72	
Tripp FSA **	0.00	\$0.00	0.00	\$0.00	0.00	\$0.00	0.00	\$0.00	5.90	5.90	
Turner *	0.00	\$0.00	0.00	\$0.00	991.73	\$727,444.90	353.00	\$106,090.00	126.90	1,471.63	
Union	0.00	\$0.00	0.00	\$0.00	96.02	\$22,331.00	0.00	\$0.00	0.00	96.02	
Yankton	0.00	\$0.00	0.00	\$0.00	294.63	\$128,562.00	123.00	\$5,375.00	365.60	783.23	
WMD Total: 13	0.00	\$0.00	2,471.10	\$2,951,250.00	18,781.88	\$4,481,485.05	88,297.61	\$21,470,770.00	7,533.56	114,613.05	
<i>Madison WMD</i>											
Brookings *	0.00	\$0.00	0.00	\$0.00	6,159.47	\$1,650,276.70	7,976.05	\$2,188,866.00	4,303.31	18,438.83	
Deuel *	0.00	\$0.00	606.72	\$527,025.00	3,228.87	\$492,022.00	29,931.08	\$4,856,092.00	8,696.27	41,856.22	
Hamlin *	0.00	\$0.00	0.00	\$0.00	3,375.89	\$943,938.00	6,242.74	\$1,130,630.00	323.90	9,942.53	
Kingsbury *	0.00	\$0.00	319.01	\$654,695.00	5,256.36	\$1,258,255.50	26,329.61	\$5,170,581.00	6,412.06	37,998.03	
Lake *	0.00	\$0.00	0.00	\$0.00	5,672.95	\$1,296,457.75	6,657.32	\$1,953,635.00	917.12	13,247.39	
McCook *	0.00	\$0.00	0.00	\$0.00	3,362.96	\$680,845.60	7,018.31	\$1,582,120.00	958.68	11,339.95	
Miner *	0.00	\$0.00	950.00	\$1,142,450.00	1,545.87	\$153,695.00	30,822.02	\$11,262,715.00	1,299.80	33,667.69	
Minnehaha *	0.00	\$0.00	0.00	\$0.00	4,606.03	\$1,342,286.00	1,720.44	\$387,620.00	79.10	6,405.57	
Moody *	0.00	\$0.00	0.00	\$0.00	2,903.78	\$927,478.85	1,959.02	\$645,930.00	828.37	5,691.17	
WMD Total: 9	0.00	\$0.00	1,875.73	\$2,324,170.00	36,112.18	\$8,745,255.40	118,656.59	\$29,178,189.00	23,818.61	178,587.38	
<i>Sand Lake WMD</i>											
Brown	0.00	\$0.00	1,523.78	\$1,407,333.00	4,207.65	\$865,523.80	55,560.24	\$10,709,608.00	1,444.49	61,212.38	
Campbell	0.00	\$0.00	1,895.81	\$1,419,150.00	1,919.71	\$185,541.00	33,570.04	\$5,336,105.00	3,355.27	38,845.02	
Corson FSA **	0.00	\$0.00	0.00	\$0.00	0.00	\$0.00	0.00	\$0.00	1,105.90	1,105.90	
Dewey FSA **	0.00	\$0.00	0.00	\$0.00	0.00	\$0.00	0.00	\$0.00	2,361.80	2,361.80	
Edmunds *	0.00	\$0.00	33.00	\$66,700.00	9,074.49	\$1,767,201.00	135,091.10	\$16,157,823.00	3,171.04	147,336.63	
Faulk *	0.00	\$0.00	411.46	\$374,300.00	2,726.88	\$712,995.00	140,136.27	\$12,932,840.00	3,721.51	146,584.66	
McPherson *	0.00	\$0.00	6,211.66	\$3,090,750.00	19,242.02	\$3,381,611.80	157,379.19	\$13,563,265.00	14,479.15	191,100.36	
Potter *	0.00	\$0.00	227.97	\$226,350.00	652.63	\$71,179.00	29,557.24	\$4,308,080.00	415.10	30,624.97	
Spink *	0.00	\$0.00	1,336.58	\$1,316,925.00	2,220.86	\$399,130.00	32,065.75	\$6,914,935.00	1,308.20	35,594.81	
Walworth *	0.00	\$0.00	378.03	\$223,450.00	1,270.54	\$191,800.00	22,970.72	\$2,452,565.00	853.30	25,094.56	
WMD Total: 8	0.00	\$0.00	12,018.29	\$8,124,958.00	41,314.78	\$7,574,981.60	606,330.55	\$72,375,221.00	32,215.76	679,861.09	
<i>Waubay WMD</i>											
Clark *	0.00	\$0.00	845.28	\$592,650.00	5,819.05	\$814,503.90	47,806.02	\$4,106,875.00	1,186.43	54,811.50	
Codington *	0.00	\$0.00	675.15	\$644,250.00	4,915.24	\$882,837.70	12,672.67	\$2,037,415.00	1,546.65	19,134.56	
Day	0.00	\$0.00	284.57	\$241,000.00	7,025.43	\$847,107.00	45,966.50	\$3,743,020.00	1,653.75	54,645.68	
Grant	0.00	\$0.00	1,225.21	\$755,825.00	5,362.99	\$1,005,000.00	26,327.36	\$5,117,620.00	698.06	32,388.41	
Marshall *	0.00	\$0.00	474.52	\$309,500.00	10,841.65	\$1,923,929.00	59,294.43	\$5,140,456.00	767.26	70,903.34	

Table 2. Waterfowl Production Areas

State and Unit	FISCAL YEAR MBCF ACQUISITION				CUMULATIVE TOTALS AT END OF FISCAL YEAR						
	Purchased		Easement or Lease		MBCF				All Other Acres	Total Acres	
	Acres	Cost	Acres	Cost	Acres	Cost	Easement or Lease	Cost			
South Dakota (Continued)											
<i>Waubay WMD</i>											
Roberts *	0.00	\$0.00	53.98	\$38,225.00	4,908.32	\$823,410.80	52,251.10	\$4,078,900.00	2,728.08	59,887.50	
<i>WMD Total:</i>	<i>6</i>	<i>\$0.00</i>	<i>3,558.71</i>	<i>\$2,581,450.00</i>	<i>38,872.68</i>	<i>\$6,296,788.40</i>	<i>244,318.08</i>	<i>\$24,224,286.00</i>	<i>8,580.23</i>	<i>291,770.99</i>	
State Total	44	\$0.00	28,466.98	\$22,979,663.00	148,447.31	\$29,885,067.49	1,305,930.24	\$198,235,253.00	109,228.51	1,563,606.06	
Wisconsin											
<i>Leopold WMD</i>											
Adams	0.00	\$0.00	0.00	\$0.00	344.00	\$172,500.00	0.00	\$0.00	0.00	344.00	
Columbia	0.00	\$0.00	0.00	\$0.00	3,745.43	\$5,354,951.45	0.00	\$0.00	97.85	3,843.28	
Dane	0.00	\$0.00	0.00	\$0.00	1,671.36	\$2,979,875.65	0.00	\$0.00	117.21	1,788.57	
Dodge	0.00	\$0.00	0.00	\$0.00	698.98	\$1,079,141.16	0.43	\$1,000.00	154.81	854.22	
Fond du Lac	0.00	\$0.00	0.00	\$0.00	881.06	\$1,699,888.00	0.00	\$0.00	373.84	1,254.90	
Jefferson	0.00	\$0.00	0.00	\$0.00	249.79	\$241,239.00	0.00	\$0.00	62.00	311.79	
Manitowoc	0.00	\$0.00	0.00	\$0.00	256.13	\$186,000.00	0.00	\$0.00	75.00	331.13	
Marquette	0.00	\$0.00	0.00	\$0.00	259.97	\$119,480.00	0.00	\$0.00	0.00	259.97	
Ozaukee	0.00	\$0.00	0.00	\$0.00	709.30	\$1,591,413.40	0.00	\$0.00	0.00	709.30	
Rock	0.00	\$0.00	0.00	\$0.00	349.32	\$302,358.71	0.00	\$0.00	100.00	449.32	
Sauk	0.00	\$0.00	0.00	\$0.00	26.87	\$191,000.00	0.00	\$0.00	210.88	237.75	
Sheboygan	0.00	\$0.00	0.00	\$0.00	499.03	\$1,364,636.94	0.00	\$0.00	311.99	811.02	
Waushara	0.00	\$0.00	0.00	\$0.00	232.30	\$243,000.00	0.00	\$6,000.00	0.00	232.30	
Winnebago	0.00	\$0.00	0.00	\$0.00	1,870.13	\$1,348,651.00	0.00	\$0.00	318.45	2,188.58	
<i>WMD Total:</i>	<i>14</i>	<i>\$0.00</i>	<i>0.00</i>	<i>\$0.00</i>	<i>11,793.67</i>	<i>\$16,874,135.31</i>	<i>0.43</i>	<i>\$7,000.00</i>	<i>1,822.03</i>	<i>13,616.13</i>	
<i>St. Croix WMD</i>											
Dunn	0.00	\$0.00	0.00	\$0.00	726.45	\$1,043,700.00	0.00	\$0.00	150.80	877.25	
Polk	0.00	\$0.00	0.00	\$0.00	935.09	\$875,424.00	0.00	\$0.00	221.98	1,157.07	
St. Croix	0.00	\$0.00	0.00	\$0.00	5,773.55	\$9,059,904.56	0.64	\$1,500.00	432.41	6,206.60	
<i>WMD Total:</i>	<i>3</i>	<i>\$0.00</i>	<i>0.00</i>	<i>\$0.00</i>	<i>7,435.09</i>	<i>\$10,979,028.56</i>	<i>0.64</i>	<i>\$1,500.00</i>	<i>805.19</i>	<i>8,240.92</i>	
State Total	17	\$0.00	0.00	\$0.00	19,228.76	\$27,853,163.87	1.07	\$8,500.00	2,627.22	21,857.05	
Grand Total	209	1,108.61	\$4,099,200.00	42,834.28	\$39,992,657.14	693,647.32	\$248,878,947.41	2,451,035.58	\$334,695,386.03	627,605.90	3,772,288.80

* These counties include interests transferred by the FSA.

** Denotes interests transferred by the FSA.

FSA - Farm Service Agency (Formerly Farmers Home Administration, Department of Agriculture)

Negative numbers in the *Fiscal Year MBCF Acquisition* acreage totals reflect acres disposed through land-for-land exchanges, where the Service exchanged previously acquired WPA lands for other lands to consolidate land holdings, improve land management efficiency, and eliminate confusion for the visiting public.

North American Wetlands Conservation Fund: Summary of MBCC Approvals for Fiscal Year 2014

The Migratory Bird Conservation Commission approved 74 standard wetland conservation project proposals for funding in Fiscal Year 2014 under the North American Wetlands Conservation Act. A total of \$76,187,084 from the North American Wetlands Conservation Fund, together with \$138,886,841 in partner funds, are supporting 50 projects in the United States, 14 in Canada, and 10 in Mexico. The following tables provide summary and detailed project information.

Fiscal Year 2014

Standard projects Approved by the Migratory Bird Conservation Commission and Active Under the North American Wetlands Conservation Act

<i>Country</i>	<i>Number of Projects</i>	<i>Act Funds</i>	<i>Partner Funds</i>	<i>Acres Affected</i>
U.S.	50	\$50,052,509	\$110,797,900	245,524
Canada	14	\$23,595,356	\$23,704,606	35,459
Mexico	10	\$2,539,219	\$4,384,335	23,765
Totals	74	\$76,187,084	\$138,886,841	304,748

U.S. Small Grants	45	\$3,095,373	\$9,063,553	21,024
--------------------------	-----------	--------------------	--------------------	---------------

In addition, the Commission approved 45 United States small grant proposals, totaling \$3,095,373 from the Fund, supported by \$9,063,553 in total partner funds, affecting 21,024 acres.

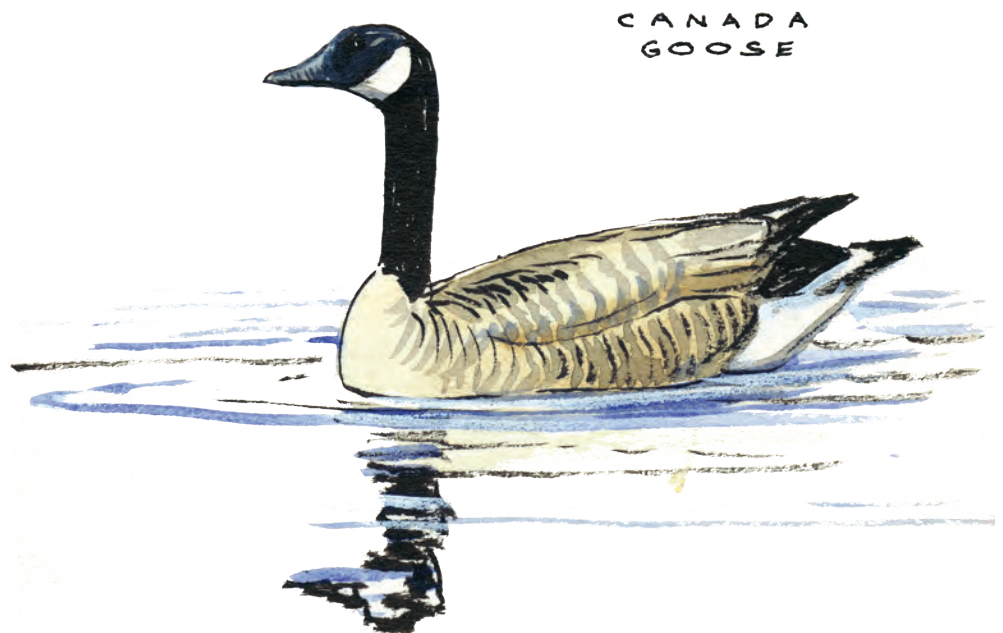


Table 3. U.S. Wetlands Conservation Standard Grants Proposals

<i>Title (rank)</i>	<i>State</i>	<i>NAWCA Request</i>	<i>Partner Match</i>	<i>Acres</i>	<i>Grant Funds for USFWS</i>	<i>Coastal Project</i>
Arkansas MAV Protection, Restoration and Enhancement	AR	\$1,000,000	\$2,892,963	1,806		No
Arkansas MAV Protection, Restoration and Enhancement II	AR	\$1,000,000	\$2,589,049	2,147		No
Bayou L'Ours Marsh Terracing	LA	\$973,096	\$1,946,191	1,384		Yes
Bayou Sauvage Protection	LA	\$888,735	\$2,000,000	30,239	\$888,735	Yes
Border Prairie Wetlands III	MN	\$1,000,000	\$2,299,302	1,627		No
California Delta and Yolo Basin Habitat Project, Phase II	CA	\$1,000,000	\$2,016,079	2,669		Yes
Central Flyway Migration Corridor	KS, NE	\$1,000,000	\$2,193,087	5,119		No
Central Puget Lowlands Project	WA	\$1,000,000	\$2,327,401	517		Yes
Central South Dakota Wetlands and Prairies	SD	\$1,000,000	\$1,014,604	8,410	\$533,386	No
Chase Lake Area Wetland Project – XI	ND	\$1,000,000	\$1,318,230	43,785	\$1,000,000	No
Coastal South Carolina Wetlands Partnership	SC	\$1,000,000	\$2,077,000	2,624		Yes
Crown of the Continent East	MT	\$1,000,000	\$2,133,770	8,610	\$1,000,000	No
Delaware's Declining Wetlands Habitats	DE	\$1,000,000	\$2,046,510	2,067		Yes
Door to Garden Peninsula Coastal	MI, WI	\$1,000,000	\$3,412,845	1,872	\$72,500	Yes
Glaciated Valleys of Northwest Montana III	MT	\$993,700	\$2,906,667	1,557		No
Glaciated Wetlands and Prairies of ND and MN – IV	MN, ND	\$1,000,000	\$1,135,725	4,050		No
Gordy Marsh Land Acquisition Project	TX	\$565,500	\$1,136,000	1,936		Yes
Iowa Mississippi River Valley	IA	\$1,000,000	\$2,301,687	3,173		No
Island Road Marsh Terracing	LA	\$704,000	\$1,408,200	938		Yes
James River Lowlands/Missouri Coteau Project – Phase VI	SD	\$1,500,000	\$1,509,797	5,871		No
Kansas Prairie Wetlands	KS	\$1,000,000	\$2,389,847	11,201		No
Kennebec River Estuary: Phase V	ME	\$934,000	\$3,365,000	395		Yes
Lowcountry Protection I	SC	\$1,000,000	\$2,060,116	2,445		Yes
Maine Coastal Refuges	ME	\$1,000,000	\$2,536,544	596	\$1,000,000	Yes
Michigan Upper Peninsula Coastal Wetland Project III	MI	\$1,000,000	\$2,192,769	3,727		Yes
Mid-Valley Wetland Habitat Project III	CA	\$838,350	\$1,588,134	4,436		No
Mississippi Wetlands Conservation Initiative II	MS	\$999,830	\$2,246,118	2,719		No
Missouri Coteau Habitat Conservation XIII	ND	\$2,000,000	\$2,017,604	10,074		No
Montana Hi-Line Prairie Wetland V	MT	\$1,000,000	\$2,012,000	1,557	\$1,000,000	No
Northeast Cape Fear River Corridor Project	NC	\$1,000,000	\$2,550,000	4,310		Yes
Northern Tulare/San Joaquin Basins V	CA	\$1,000,000	\$1,650,635	5,843		No
Patoka River NWR Expansion	IN	\$1,000,000	\$2,171,191	2,698		No
Pocomoke River Partnership III	MD	\$1,000,000	\$2,880,000	1,675	\$1,000,000	Yes
Rainwater Basin Phase VII	NE	\$1,000,000	\$2,066,348	6,603	\$240,269	No
Rio Grande Corridor, Phase II	NM	\$1,000,000	\$3,088,629	1,733		No
San Francisco Bay Cordgrass Enhancement Project	CA	\$1,000,000	\$1,683,421	2,325		Yes
South Carolina Coastal Refuges Partnership II	SC	\$1,000,000	\$1,506,000	2,254	\$1,000,000	Yes
South Carolina Lowcountry Wetlands Initiative V	SC	\$1,000,000	\$2,753,854	1,749		Yes
South Carolina Lowcountry Wetlands VI	SC	\$1,000,000	\$1,796,536	2,783		Yes
South Carolina Wetlands Landscape Initiative II	SC	\$1,000,000	\$2,000,416	3,720		Yes
Southeast New Jersey Coastal Initiative II	NJ	\$1,000,000	\$4,971,634	1,673		Yes
Southern Red River Valley Wetlands	MN	\$993,723	\$3,341,458	2,101		No
Southern San Joaquin Valley Wetland Habitat Project III	CA	\$900,000	\$2,284,461	5,463		No
St. Lawrence River/Thousands Islands	NY	\$1,000,000	\$2,136,773	2,133		Yes
Suisun Wetlands Conservation, Phase I	CA	\$1,000,000	\$2,023,104	5,625		Yes

Table 3. U.S. Wetlands Conservation Standard Grants Proposals

<i>Title (rank)</i>	<i>State</i>	<i>NAWCA Request</i>	<i>Partner Match</i>	<i>Acres</i>	<i>Grant Funds for USFWS</i>	<i>Coastal Project</i>
Tom's Bayou	LA	\$761,675	\$2,165,093	8,816		Yes
Tulare Basin Wetlands Restoration III	CA	\$1,000,000	\$2,044,902	4,450		No
West Tennessee Wetlands Enhancement Project	TN	\$999,900	\$2,263,507	2,441		No
Wham Brake Hydrology Enhancement	LA	\$1,000,000	\$2,100,000	8,547		No
Williamette Valley Partnership II	OR	\$1,000,000	\$2,246,699	1,031	\$18,632	No
		\$50,052,509	\$110,797,900	245,524	\$7,753,522	

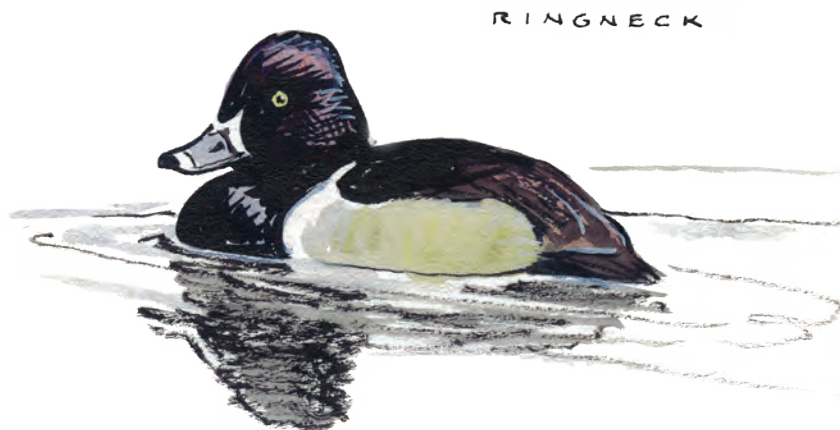


Table 4. U.S. Wetlands Conservation Small Grant Proposals

<i>Project Title</i>	<i>Grantee Organization</i>	<i>State</i>	<i>Grant Request</i>	<i>Partner Match</i>	<i>Acres</i>	<i>Grant Funds for USFWS</i>	<i>Coastal Project</i>
Arcadia Marsh Expansion Project	Grand Traverse Regional Land Conservancy	MI	\$69,791	\$104,745	74	N	Y
Bachelor Brook Floodplain	Kestrel Land Trust	MA	\$43,750	\$446,375	114	N	N
Barney Lake Expansion	Skagit Land Trust	WA	\$57,000	\$119,401	30	N	Y
Big Darby Creek Corridor Protection	Ducks Unlimited	OH	\$75,000	\$75,000	48	N	N
Big Lake Wetland Restoration	Montana Department of Fish, Wildlife & Parks	MT	\$75,000	\$343,025	1,184	N	N
Bolivar Flats Acquisition	Houston Audubon Society	TX	\$75,000	\$152,000	62	N	Y
Brandt Island Cove	Buzzards Bay Coalition	MA	\$75,000	\$75,000	39	N	Y
Broad River WMA Wetland Project	Ducks Unlimited	SC	\$75,000	\$225,000	180	N	N
Burton Swamp Project	Western Reserve Land Conservancy	OH	\$75,000	\$419,500	115	N	Y
Cannon Tract Acquisition	Tennessee Wildlife Resources Agency	TN	\$75,000	\$229,200	279	N	N
Central City Gun Club Restoration	California Waterfowl Association	CA	\$75,000	\$75,000	94	N	N
Detroit Lakes, MN WPA Enhancement	Pheasants Forever, Inc.	MN	\$75,000	\$88,000	1,759	Y	N
Dobbs Landing Land Acquisition	Alliance of Dunn County Conservation and Sports Clubs, Inc.	WI	\$75,000	\$75,000	178	N	N
Eagle Creek Wetlands Project	Western Reserve Land Conservancy	OH	\$75,000	\$426,000	173	N	N
Glacial Ridge National Wildlife Refuge Lee Wetland Enhancement 2013	USFWS - Glacial Ridge National Wildlife Refuge	MN	\$75,000	\$300,845	369	Y	N
Glacial Ridge NWR Wetland Enhancements - 2013	USFWS - Glacial Ridge National Wildlife Refuge	MN	\$75,000	\$1,083,872	2,930	Y	N
Grass Island Acquisition	Washington Department of Fish & Wildlife	WA	\$47,000	\$95,000	199	N	Y
Gulf Coast Mottled Duck Conservation Plan - Phase 7	Texas R.I.C.E.	TX	\$15,000	\$34,000	90	Y	Y
H & L Farms Acquisition	Pheasants Forever, Inc.	WI	\$75,000	\$746,100	714	N	N
Harper Tract Acquisition Project - Boatwright Wildlife Management Area	Kentucky Department of Fish & Wildlife Resources	KY	\$75,000	\$255,000	286	N	N
Headwaters Habitat Project	Gallatin Valley Land Trust	MT	\$75,000	\$218,700	194	N	N
Humboldt Bay Spartina Eradication	California State Coastal Conservancy	CA	\$75,000	\$76,000	40	Y	Y
Iroquois Seneca Pool Restoration	Ducks Unlimited	NY	\$62,407	\$62,639	1,010	Y	Y
Limperis Lamprey River Project	Southeast Land Trust of New Hampshire	NH	\$75,000	\$75,000	263	N	Y
Litchfield Wetland Management District WPA Enhancement, MN	Pheasants Forever, Inc.	MN	\$75,000	\$77,063	1,027	Y	N
Little River Estuary Protection	California State Coastal Conservancy	CA	\$40,000	\$43,520	15	N	Y
Mills Playa/River Restoration	Canadian River Riparian Restoration Project	NM	\$75,000	\$150,000	840	N	N
Mud Lake WPA Addition, MN	Pheasants Forever, Inc.	MN	\$75,000	\$177,500	47	Y	N
New State Small Roller Water Control Structure	New State Inc.	UT	\$40,000	\$50,599	1,503	N	N
Oak Ridge Wetland Restoration at Hennepin & Hopper Lakes	The Wetlands Initiative	IL	\$50,000	\$76,952	70	N	N
Old Pond/Youngs Bay Watershed Conservation Area Pettengill Preserve	Crabtree Neck Land Trust	ME	\$75,000	\$361,500	111	N	Y
Perry Wildlife Area Wetlands	Ducks Unlimited	KS	\$75,000	\$202,579	456	N	N
Piper's Patch Enhancement	California Waterfowl Association	CA	\$75,000	\$117,931	321	N	N
Selk WMA Addition, MN	Pheasants Forever, Inc.	MN	\$75,000	\$86,000	40	N	N
Skokomish Estuary Restoration, Phase 3	Mason Conservation District	WA	\$75,000	\$150,005	825	N	Y
Smith Lake Bird Habitat - Wade II	Flathead Land Trust	MT	\$75,000	\$97,250	77	N	N
Southern WI SNA Wetlands	Wisconsin Department of Natural Resources	WI	\$75,000	\$82,672	2,205	N	N
Star Prairie Wetlands Project	USFWS St. Croix Wetlands Management District	WI	\$75,000	\$77,855	203	Y	N
Suisun Marsh Enhancement	California Waterfowl Association	CA	\$65,000	\$65,000	170	N	Y
Swift County, MN, Wetland Conservation	Pheasants Forever, Inc.	MN	\$75,000	\$228,000	177	Y	N
Sylvan Road Conservation Area	The Prairie Enthusiasts	WI	\$75,000	\$171,000	198	N	N
Tiger Marsh WMA	Pheasants Forever, Inc.	MN	\$75,000	\$757,500	110	N	N
Upper Great Marsh Tidal Restoration Project Phase III	Merrimack Valley Planning Commission	MA	\$75,000	\$129,800	150	Y	Y
Upper Laupahoehoe Nui Watershed Reserve	The Kohala Center, Inc.	HI	\$75,000	\$105,000	2,000	N	Y
Whitney WPA	Pheasants Forever, Inc.	MN	\$55,425	\$55,425	54	Y	N
			\$3,095,373	\$9,063,553	21,024		

Table 5. Canadian Wetlands Conservation Proposals

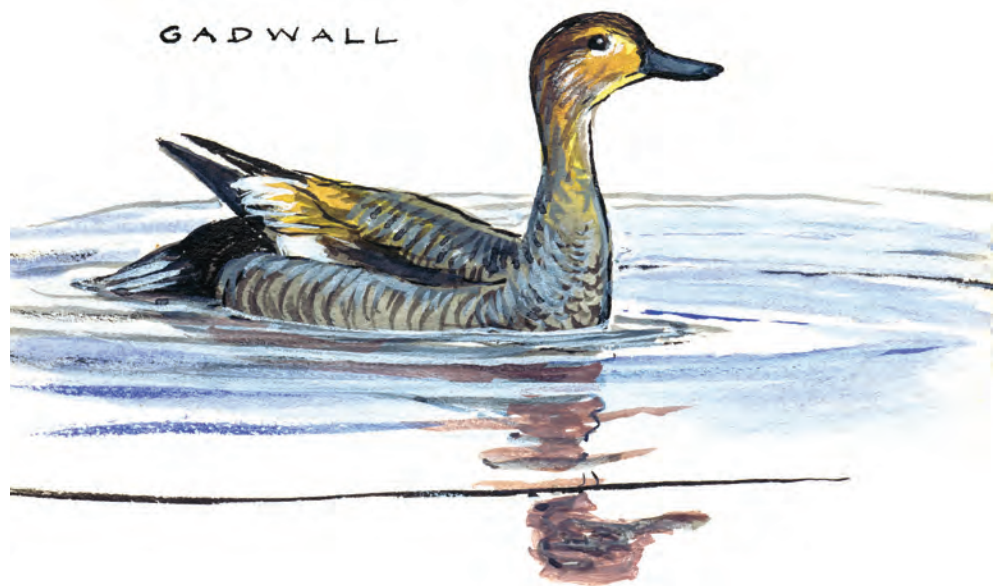
<i>Title (Rank)</i>	<i>Province</i>	<i>Recipient</i>	<i>NAWCA Request</i>	<i>Partner Match</i>	<i>Securement Acres</i>	<i>Enhancement Acres</i>	<i>Management Acres</i>
Alberta Securement Project (7)	AB	Nature Conservancy Canada	\$250,000	\$250,000	160	10	0
British Columbia, PCJV and CIJV Program (10)	AB,BC	Ducks Unlimited Canada	\$1,533,567	\$1,533,567	639	325	398,682
British Columbia, PCJV and CIJV Program (13)	BC	Nature Conservancy Canada	\$400,000	\$400,000	213	113	6,504
EHJV - Long Point and Lake St. Clair (4)	ON	Ducks Unlimited Canada	\$700,000	\$700,000	0	1,234	0
EHJV - Massettes Marsh (5)	QB	Ducks Unlimited Canada	\$200,000	\$200,000	0	208	0
EHJV Wetlands (9)	NB,NF,NS,ON,PEI,QB	Ducks Unlimited Canada	\$2,756,922	\$2,756,922	1,008	2,190	1,045,353
Manitoba Prairie Parkland (3)	MB	Manitoba Habitat Heritage Corp.	\$250,000	\$250,000	500	0	0
Ontario, Quebec, Atlantic Protecting Wetlands (11)	NB,NF,NS,ON,PEI,QB	Nature Conservancy Canada	\$967,625	\$1,076,875	2,250	2	67,603
Potholes Plus Project (14)	AB,MB,SK	Manitoba Habitat Heritage Corp.	\$265,000	\$265,000	1,784	250	54,650
PHJV - Allan/Dana Hills (1)	SK	Ducks Unlimited Canada	\$2,000,000	\$2,000,000	2,641	1,376	0
PHJV - Virden/Lightning (2)	MB,SK	Ducks Unlimited Canada	\$1,100,000	\$1,100,000	1,600	936	0
Prairies: Protecting Wetlands and Uplands (12)	AB,MB,SK	Nature Conservancy Canada	\$982,428	\$982,428	2,396	160	68,137
Prairie/Parkland and Western Boreal Habitat (8)	AB,BC,MB,NT,SK,YT	Ducks Unlimited Canada	\$11,926,699	\$11,926,699	9,918	3,438	4,788,652
Quill Lakes (6)	SK	Nature Conservancy Canada	\$263,115	\$263,115	1,198	910	0
Number of Projects: 9			\$23,595,356	\$23,704,606	24,307	11,152	6,429,581

* These funds include funding contributions from Canadian, U.S. and/or other International partners that are in addition to NAWCA and match funding

AB	**Alberta	NB	New Brunswick	NT	Northwest Territory	QB	Quebec
BC	British Columbia	NF	Newfoundland/Labrador	ON	Ontario	SK	Saskatchewan
MB	Manitoba	NS	Nova Scotia	PE	Prince Edward Island	YT	Yukon Territory

Table 6. Mexican Wetlands Conservation Proposals

<i>Title (rank)</i>	<i>Applicant Organization</i>	<i>State</i>	<i>NAWCA Request</i>	<i>Partner Contribution</i>	<i>Total</i>	<i>Acres</i>
Enhancement of Wetland Habitat for Migratory Waterfowl on the Coastal Plain of Tamaulipas (1)	DUMAC	Tamaulipas	\$239,703	\$299,765	\$539,468	1,609
Establishment of the Gulf of Mexico Private Wetlands Conservation Network, Phase Ia (9)	PNV	Veracruz, Tamaulipas	\$47,110	\$59,998	\$107,108	41
Establishment of the Gulf of Mexico Private Wetlands Conservation Network, Phase Ib (10)	PNV	Veracruz, Tamaulipas	\$155,349	\$231,745	\$387,094	700
Implementation of Restoration and Enhancement Activities as Part of the Mexican Central Plateau Wetlands Conservation Strategy (5)	DUMAC	Jalisco, Guanajuato	\$413,245	\$1,168,517	\$1,581,762	4,386
Integrated Management of the Watersheds of Marismas Nacionales (2)	PNO	Nayarit	\$329,218	\$511,800	\$841,018	1,729
Inventory and Classification of Critical Wetlands in Mexico, Phase VII: Northwest and Northeast Mexico (7)	DUMAC	6 states	\$384,940	\$427,453	\$812,393	
Protection and Restoration in the Rio Bravo (Grande) Delta: Laguna Madre, Phase IIIa (3)	PNE	Tamaulipas	\$244,220	\$473,960	\$718,180	4,913
Protection and Restoration in the Rio Bravo (Grande) Delta: Laguna Madre, Phase IIIb (4)	PNE	Tamaulipas	\$111,210	\$128,568	\$239,778	
Restoration and Alternatives for the Sustainability of Alvarado Lagoon System II (6)	PNV	Veracruz	\$290,864	\$661,273	\$952,137	5,809
Restoration of Mangroves in the Coastal Wetlands of Port Chuburná, Yucatan (8)	DUMAC	Yucatan	\$323,360	\$421,256	\$744,616	4,578
Totals:			\$2,539,219	\$4,384,335	\$6,923,554	23,765



Membership of the Migratory Bird Conservation Commission

Fiscal Year	Secretary of the Interior ¹	Secretary of Agriculture ²	Secretary of Commerce ³	Secretary of Transportation ⁴	Administrator of EPA ⁵	Members on Part of the Senate	Members on Part of the House	Secretary to the Commission		
1929	Roy L. Wilbur	Arthur M. Hyde	Robert P. Lamont			Harry B. Hawes	Peter Norbeck	Sam D. McReynolds	Ernest R. Ackerman	Rudolph Dieffenbach
1930										
1931										
1932									August H. Andresen	
1933	Harold L. Ickes	Henry A. Wallace	Daniel C. Roper			Key Pittman			Roy O. Woodruff	
1934									Chester C. Bolton	
1935										
1936										
1937							Charles L. McNary		James Wolfenden	
1938										
1939			Harry L. Hopkins							
1940								John J. Cochran		
1941			Jessie H. Jones			George L. Radcliffe				
1942										
1943										
1944							Vacant		Walter E. Brehm	
1945			Henry A. Wallace				C. Wayland Brooks			
1946	Julius A. Krug									
1947			W. Averell Harriman			A. Willis Robertson		Frank M. Karsten		Arthur A. Riemer
1948			Charles F. Brannon							
1949							Raymond E. Baldwin			
1950	Oscar L. Chapman						Vacant			
1951							John W. Bricker			
1952									August H. Andresen	
1953	Douglas McKay	Ezra Taft Benson	Sinclair Weeks							
1954										
1955										
1956	Fred A. Seaton									
1957						Thomas C. Hennings, Jr.				Albert J. Rissman
1958									Leon H. Gavin	
1959			Lewis L. Strauss							
1960			Frederick H. Mueller				Roman L. Hruska			
1961	Stewart L. Udall	Orville L. Freeman	Luther H. Hodges							
1962						Lee Metcalf				
1963										
1964										
1965			John T. Connor						George A. Gooding	
1966									Silvio O. Conte	F.G. Spoden Jr.
1967			Alexander B. Trowbridge							
1968				Alan S. Boyd						
1969	Walter J. Hickel	Clifford M. Hardin		John A. Volpe						
1970						Joseph D. Tydings	Henry L. Bellman	John D. Dingell		
1971	Roger C.B. Morton					Lee Metcalf				Walter R. McAllister

1972		Earl L. Butz												
1973				Claude S. Brinegar										
1974														
1975	Stanley Hathaway			William T. Coleman		Quentin N. Burdick								
1976	Thomas S. Kleppe													
1977	Cecil D. Andrus	Bob Bergland		Brook Adams		Floyd K. Haskell								
1978														
1979				Neil Goldschmidt		David H. Pryor								
1980								Thad Cochran						
1981	James G. Watt	James R. Block		Drew Lewis										
1982														
1983				Elizabeth H. Dole										
1984	William P. Clark													
1985	Donald Hodel													
1986		Richard Lyng											William F. Hartwig	
1987														
1988				James Burnley IV										
1989	Manuel Lujan Jr.	Clayton Yeutter		Samuel K. Skinner										
1990					William K. Reilly									
1991		Edward R. Madigan												
1992									Richard T. Schulze					
1993	Bruce Babbitt	Mike Espy		Carol M. Browner										
1994														
1995		Daniel R. Glickman												
1996														
1997														
1998														
1999														
2000														
2001	Gale Norton	Ann M. Veneman												
2002					Christine Todd-Whitman									
2003														
2004				Michael O. Leavitt										A. Eric Alvarez
2005		Mike Johanns												
2006	Dirk Kempthorne			Stephen L. Johnson										
2007														
2008		Edward Schafer											Wayne T. Gilchrest	
2009	Kenneth L. Salazar	Thomas J. Vilsack												
2010				Lisa P. Jackson									Robert J. Wittman	
2011														
2012														
2013	Sally Jewell													
2014				Gina McCarthy										

- 1. Chairman, 1940 to date
- 2. Chairman, 1929 to 1939
- 3. Member, 1929 to March 1, 1968
- 4. Member, March 2, 1968, to December 12, 1989
- 5. Member, December 13, 1989, to date



U.S. Department of the Interior
U.S. Fish and Wildlife Service
Division of Realty
realty.fws.gov

April 2015

