



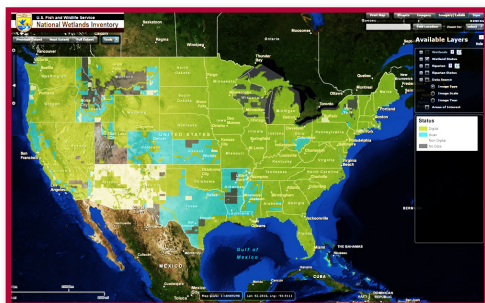
# Geospatial Applications

## Supporting the Mission

Geospatial applications serve the widest possible audience in presenting the georeferenced data assets of the U.S. Fish and Wildlife Service.

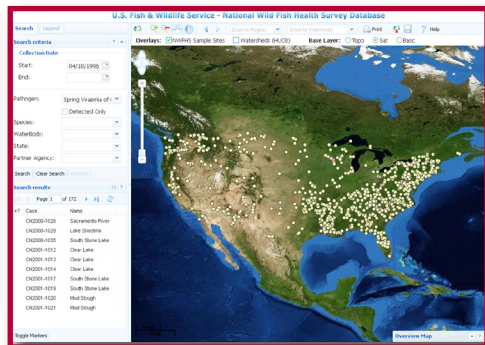
Geospatial mapping applications enable easy-to-use, interactive visualization tools, and effective management of data resources and technology to successfully support the Service's mission. Informing the public and sharing our data with the conservation community are just some examples of how geospatial applications serve our goals. For additional information on the Service's public, online mapping applications please visit: <http://www.fws.gov/GIS/applications>

### National Wetlands Inventory (NWI)



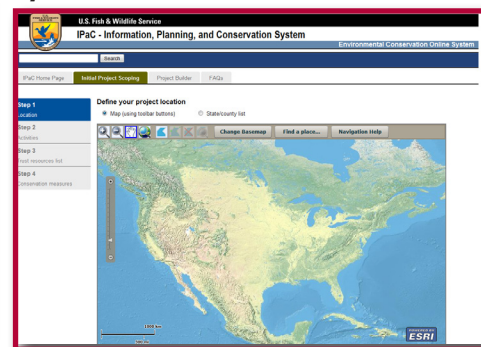
Provides information to the public on the extent and status of the Nation's wetlands

### National Wild Fish Health Survey Database



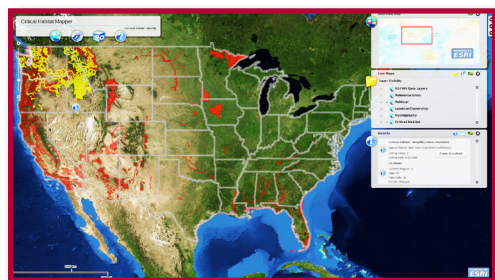
Provides national fish health information to Service partners and the public

### Information, Planning and Conservation System (IPaC)



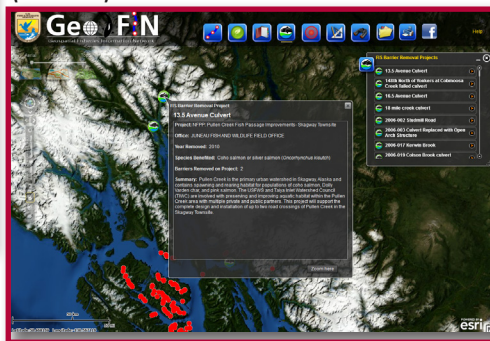
The IPaC system assists people in Planning their activities within the context of natural resource Conservation

### Critical Habitat Portal



Serves information regarding Threatened and Endangered Species and Critical Habitat designation across the US

### Geospatial Fisheries Information Network (GeoFIN)



The GeoFIN Mapper is an assemblage of data, showing an inventory of potential barriers to fish passage

### Waterfowl Production Area



The Waterfowl Production Area Mapper presents a visualization of Waterfowl Production Areas in the Upper Midwest of the United States

For More Information Contact:

U.S. Fish & Wildlife Service  
GIS Coordinator: Chris Lett  
FWS/IRTM/BDSS, Denver, CO  
Phone: 303/275 2348  
Email: [chris\\_lett@fws.gov](mailto:chris_lett@fws.gov)

November 2012r