

Division of Environmental Biology (DEB) Virtual Office Hour

Today's topic: Intro to DEB

Welcome to the DEB Virtual Office
Hour.
We will begin soon.

Please submit questions via the
Q&A button available to you on
ZOOM. Please set to "Send
anonymously"

Division of Environmental Biology (DEB) Virtual Office Hour – Welcome!

Program Officers in attendance today

- Matt Herron – Evolutionary Processes (mherron@nsf.gov)
- Kendra McLauchlan – Ecosystem Sciences (kmclauch@nsf.gov)
- Heather Throop – Ecosystem Sciences (hthroop@nsf.gov)
- Amanda Ingram – Systematics and Biodiversity Science (aingram@nsf.gov)
- Carla D'Antonio – Population and Community Ecology (cdantoni@nsf.gov)
- Marty Condon – Evolutionary Processes (mcondon@nsf.gov)

Facilitators – Christina Washington, Bill Lawson, and Megan Lewis



Recent Solicitations and DCLs

Find links to all recent solicitations and Dear Colleague Letters at the bottom of the DEB webpage (WebSearch: NSF DEB) under Funding Opportunities and Popular Links

Remember – Core DEB solicitation (**NSF 21-504**) has no deadlines and no submission limits.

- **NSF 20-579** - Dynamics of Integrated Socio-Environmental Systems (DISES)- **Deadline Nov. 16**
- **NSF 20-602** - NSF Postdoctoral Research Fellowships in Biology (PRFB)- **Deadline Nov. 18**
- **NSF 20-585** - Ecology and Evolution of Infectious Diseases (EEID)- **Deadline Nov. 18**
- **NSF 21-511** - Accelerating Research through International Network-to-Network Collaborations (AccelNet)– **Deadline Jan. 4**
- **NSF 21- 516** - Mid-Career Advancement (MCA)- **Deadline Feb. 1**
- DCL 20-038 - Developing New Research Collaborations Between Evolutionary Biologists and LTER Scientists
- DCL 20-033 - Developing and Supporting the National Ecology Observatory Network (NEON) User Community



DEB Virtual Office Hour

- DEB Office Hours: second Monday of each month, 1-2 pm EST
- Today: Introduction to DEB

Upcoming Topics:

Dec 14: Mid-Career Opportunities

Jan 11: TBD *feel free to suggest topics to us via Q&A box

Feb 8: TBD



Visit our dedicated webpage for DEB Office Hours

<https://deblog.nsfbio.com/office-hours/>

DEBrief

Blog of the Division of Environmental Biology, NSF

[Home](#) [DEB Resources and Links](#) [Office Hours](#) [About](#) [Blog Policies](#)



Office Hours

Join us the **second Monday of each month from 1pm-2pm Eastern Time** for the Division of Environmental Biology's (DEB) Virtual Office Hours. Representatives from each of the four clusters will be available to discuss specific programs and funding opportunities. There will then be an open question and answer period – questions can be on any NSF or DEB topic.

Join us remotely and bring your questions! Please use the registration link below to set up your



 Follow ...



New quarterly BIO newsletter

View first issue and subscribe:

<https://content.govdelivery.com/accounts/USNSF/bulletins/29c260f>



National
Science
Foundation

BIOLOGICAL SCIENCES

[Subscribe](#)

[View as a web page](#)

[Contact Us](#)

Dear Biological Sciences Community,

Welcome to the new BIO Directorate Newsletter!

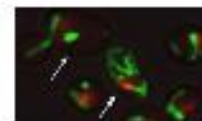
As BIO, NSF, and the world change, we are changing how we communicate with the introduction of this new quarterly email newsletter. This new vehicle will allow you to have a window into BIO and allow us to be more transparent and provide timely, relevant updates (be sure to read the Announcements section below for one). We plan to use the newsletter to bring you updates on programmatic and funding priorities, major efforts and initiatives, changes within BIO and NSF, and to share the breakthrough science you – the community – are creating through the research you conduct. Each newsletter will contain new highlights from your work, so please make your program offices aware of discoveries, highlights, and publications.

News



First gene knockout in a cephalopod

Researchers use CRISPR-Cas9 genome editing to knock out pigmentation gene in squid



Researchers discover two paths of aging, and new insights on promoting healthspan

Identifying a master aging circuit allows biologists to genetically engineer prolonged life



Genetics could help preserve coral reefs

Study provides a blueprint for the use of genomics to protect reefs from warming waters



For rufous hummingbirds, migration routes may differ

Flyways may ensure that birds have the resources they need on their journeys

[Get more Biological Sciences News](#)



Special Virtual Office Hour

2-3 pm EST, November 18

- Broader impact and broadening participation plans and how to ensure they meet their goals
- BIO Program Officers and guest Susan Renoe, executive director of the NSF-supported Center for Advancing Research Impact in Society
- Find link to register on all BIO blogs or under Events on the BIO page on NSF.gov

The logo for ARIS (Advancing Research Impact in Society) features the letters 'ARIS' in a bold, teal, sans-serif font. The letters are stylized with horizontal lines passing through them, giving it a modern, digital feel.

Advancing Research
Impact in Society



DEB Virtual Office Hour

Questions:

- Submit your questions via the Q&A box on your screen and set to “Send anonymously”
- For recently asked questions and future office hour topics, see the DEB blog (<https://deblog.nsfbio.com/>)
- For specific questions about your project, please contact a Program Officer



The **Evolutionary Processes Cluster** supports **empirical** and **theoretical** research that makes inference about **evolutionary** dynamics and their consequences.

Scales: Molecules, Organisms, Populations, Species, Clades

Processes: Mutation, Selection, Drift, Genomic rearrangements, Recombination, Life-history changes, Divergence, Speciation, Hybridization, Genome-Phenome relationships, Epigenetic inheritance, Interspecific interactions, Gene flow, Geographic movements, Extinction



Ecosystem Science: Ecosystem structure and function across diversity of spatial and temporal (including paleo) scales

1. Material and energy fluxes and transformations within and among ecosystems;
2. Roles and relationships of ecosystem components in whole system structure and function;
3. Ecosystem dynamics, resilience, and trajectories of ecosystem change through time; and
4. Linkages among ecosystem in space, time, and across spatial and temporal scales.
5. Supports research on natural, managed, and disturbed ecosystems, including those in terrestrial, freshwater, wetland, coastal (including salt marsh and mangrove), and human dominated environments



The Systematics and Biodiversity Science Program supports:

- research on the diversity, systematics, and evolutionary history of extant or extinct organisms in natural systems
- all "tree-based" studies of organismal evolution, including tree-building at all taxonomic levels, tree-based studies of character evolution and biogeography, and tree-enabled comparative biology
- expeditionary and exploratory research to discover, identify, describe, classify, and catalog the world's biodiversity, using clade-, guild-, or geography-based approaches

Two systematics-focused special categories in the DEB solicitation:

- ARTS: Advancing Revisionary Taxonomy and Systematics—funds species-level taxonomic work and revisionary monography. Must include substantial training component (DCL 17-139)
- PurSUiT: Poorly Sampled and Unknown Taxa—funds projects that fill significant gaps in biodiversity knowledge (i.e., explores “dark” parts of the Tree of Life) and integrates taxon information in an evolutionary / taxonomic framework. (DCL 20-059)



Population and Community Ecology: supports research that advances the conceptual or theoretical understanding of population ecology, species interactions and community dynamics

- Topics include: population dynamics of individual species, demography, and fundamental ecological interactions affecting populations, communities and their environments.
- Themes include: population regulation; food-web structure and trophic dynamics; competition, predation, mutualism, and parasitism; mechanisms of coexistence and the maintenance of species diversity; community assembly; paleoecology; landscape ecology; conservation and restoration biology; behavioral ecology; and macroecology

PCE Encourages:

- 1) Projects that integrate the theoretical, modeling and empirical approaches, or that promotes synthesis across spatial and temporal scales
- 2) Proposals within the context of existing theory, consider alternate mechanisms, design critical tests to distinguish among mechanisms, and uses contemporary approaches to develop new paradigms.
- 3) Inter- and multi-disciplinary proposals that cross traditional programmatic boundaries.

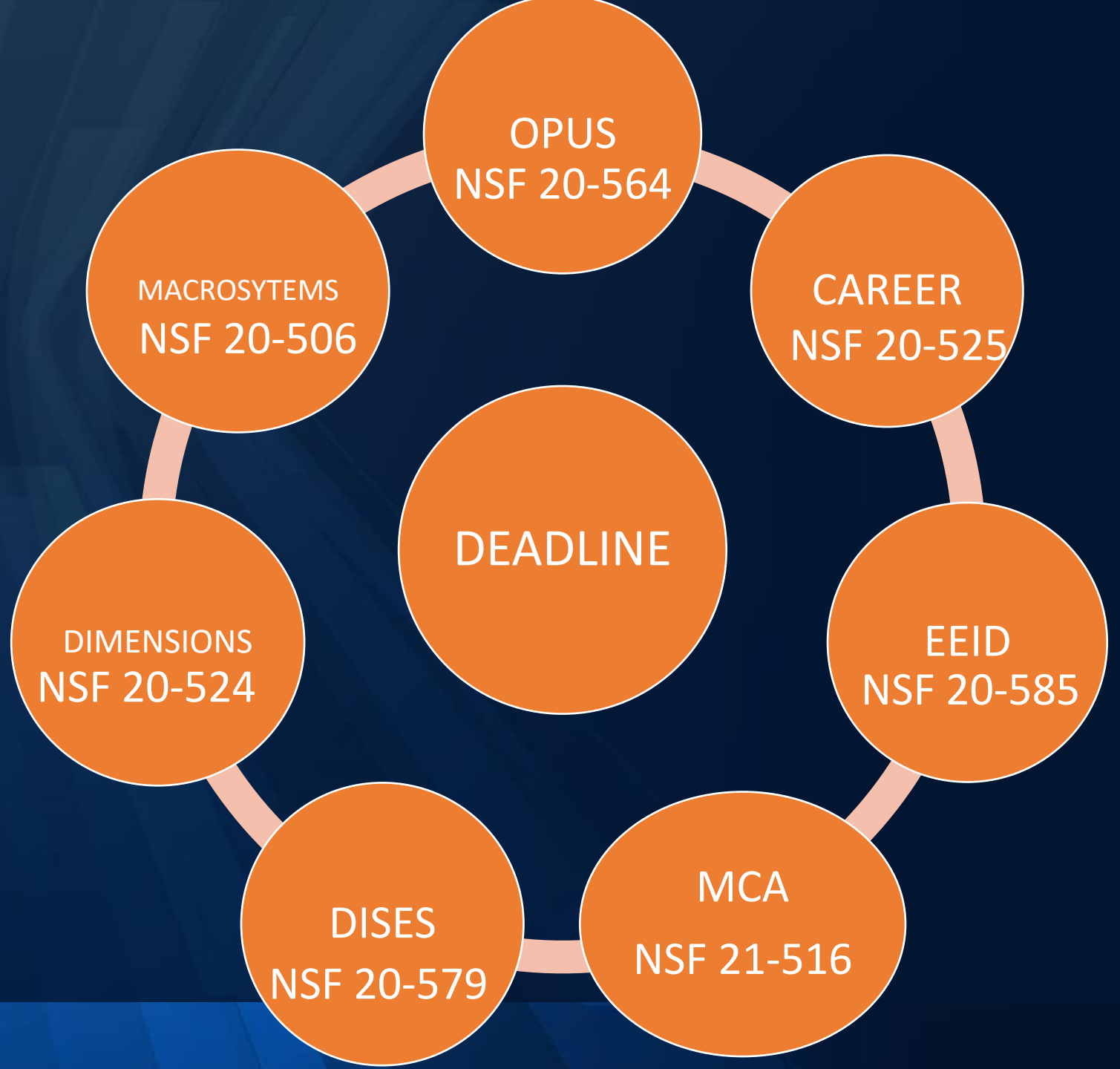
PCE supports research in terrestrial, wetland, intertidal and freshwater habitats.



Proposal Types with No Deadline



Proposal Types with Deadline



DEB Virtual Office Hour

Questions:

- Submit your questions via the Q&A box on your screen and set to “Send anonymously”
- For recently asked questions and future office hour topics, see the DEB blog (<https://debblog.nsfbio.com/>)
- For specific questions about your project, please contact a Program Officer



Division of Environmental Biology (DEB) Virtual Office Hour – Welcome!

Program Officers in attendance today

- Matt Herron – Evolutionary Processes (mherron@nsf.gov)
- Kendra McLauchlan – Ecosystem Sciences (kmclauch@nsf.gov)
- Heather Throop – Ecosystem Sciences (hthroop@nsf.gov)
- Amanda Ingram – Systematics and Biodiversity Science (aingram@nsf.gov)
- Carla D'Antonio – Population and Community Ecology (cdantoni@nsf.gov)
- Marty Condon – Evolutionary Processes (mcondon@nsf.gov)

Facilitators – Christina Washington, Bill Lawson, and Megan Lewis



Recent Solicitations and DCLs

Find links to all recent solicitations and Dear Colleague Letters at the bottom of the DEB webpage (WebSearch: NSF DEB) under Funding Opportunities and Popular Links

Remember – Core DEB solicitation (**NSF 21-504**) has no deadlines and no submission limits.

- **NSF 20-579** - Dynamics of Integrated Socio-Environmental Systems (DISES)- **Deadline Nov. 16**
- **NSF 20-602** - NSF Postdoctoral Research Fellowships in Biology (PRFB)- **Deadline Nov. 18**
- **NSF 20-585** - Ecology and Evolution of Infectious Diseases (EEID)- **Deadline Nov. 18**
- **NSF 21-511** - Accelerating Research through International Network-to-Network Collaborations (AccelNet)– **Deadline Jan. 4**
- **NSF 21- 516** - Mid-Career Advancement (MCA)- **Deadline Feb. 1**
- DCL 20-038 - Developing New Research Collaborations Between Evolutionary Biologists and LTER Scientists
- DCL 20-033 - Developing and Supporting the National Ecology Observatory Network (NEON) User Community

