

# The BUDDY Study



**Building Understanding of Developmental Differences across Years  
NEED Lab; Teachers College, Columbia University**

**917-740-4123 | [NEEDlab@tc.columbia.edu](mailto:NEEDlab@tc.columbia.edu)**

Principal Investigator: Kimberly Noble, MD PhD; Professor of Neuroscience and Education

## **Hello from the BUDDY Team from the NEED Lab at Columbia University!**

We have some exciting updates about BUDDY to share with you, keep on reading to learn more about the latest updates from the BUDDY Study!  
**Interested in hearing what's going on with the lab regularly? Follow us on social media to learn more about our research projects!**



## **Updates from the BUDDY Study!**

Thank you all for being a part of the BUDDY Study. We know that our research would not be possible without your family's dedication to learning and science. We thank you for your support and want you to know that during the COVID-19 pandemic, we are doing all we can to keep families healthy and safe.



As you may know, we're gearing up to start 18-month visits! Just like previous visits, we will have a virtual version available to accommodate families during COVID-19. At this visit we plan to learn

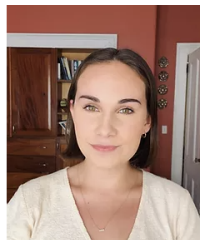
As you may know, we're gearing up to start 18-month visits! Just like previous visits, we will have a virtual version available to accommodate families during COVID-19. At this visit we plan to learn more about how your child is learning language and how they are learning to remember things. We are excited to see how much all of your little ones have grown!



For now, we have paused recruitment due to the COVID-19 pandemic but will continue other aspects of the BUDDY Study virtually. Once the pandemic is more resolved, we will begin the recruitment of our final 107 families. If you know someone who is pregnant and may be interested in participating, please send them the link at the bottom of this email so that they can join our participant database! In the meantime, let's be sure to stay connected! If you have moved or changed phone numbers, please let us know by emailing us your new phone number, email address and/or home address!\*

\*Your personally identifiable information is only accessible by authorized research staff, will be kept confidential, and is stored in a secure password protected location.

## Meet our Staff!



**Isabel**

**Lab Manager and BUDDY Co-Coordinator**

We're excited to welcome Isabel, our newest full-time BUDDY staff member! Isabel is a recent graduate of Barnard College, where she majored in Psychology and minored in Spanish and Dance. She also worked on the BUDDY Study as an undergraduate and we are super excited to

<https://viewstripo.email/55f7bcd6-77de-4f79-aec3-b9e22f13c4b31602207945091>

**Liv****BUDDY Study Coordinator**

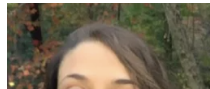
Most of us probably already know Liv! She is in charge of overseeing the study and getting to know your little ones during visits (which is by far her favorite part of her job)! Liv is excited to start her second year working on the BUDDY Study. This year, Liv is especially excited to present some of our research findings in national conferences focused on child health and development. Liv is also getting ready to apply for graduate school this year so she can continue learning more about child development!

**Melina****Research Assistant**

Melina is also joining us for another year with the BUDDY Study! Melina is completing the second year of her masters in Neuroscience and Education. Before working on BUDDY, she was an elementary school teacher in Miami. Melina focuses on helping out the BUDDY study with scheduling visits and LENA administration! She is excited to keep working with all of you while she finishes her degree!

**Shanith (Shani)****Research Assistant**

Shani is a recent graduate of the Neuroscience and Education program, at Teachers College of Columbia University. She works with the NEED Lab as a research assistant, where she enjoys running EEG visits and bringing our social media to life. This fall Shani is applying to PhD programs so she can continue to learn about child brain development.



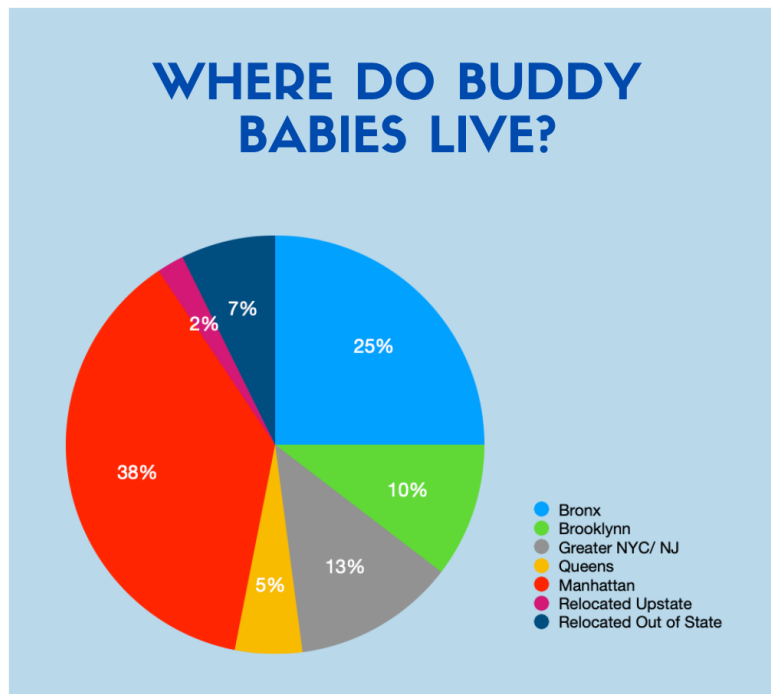
Copy of New email  
programs so she can continue to learn about child brain development.

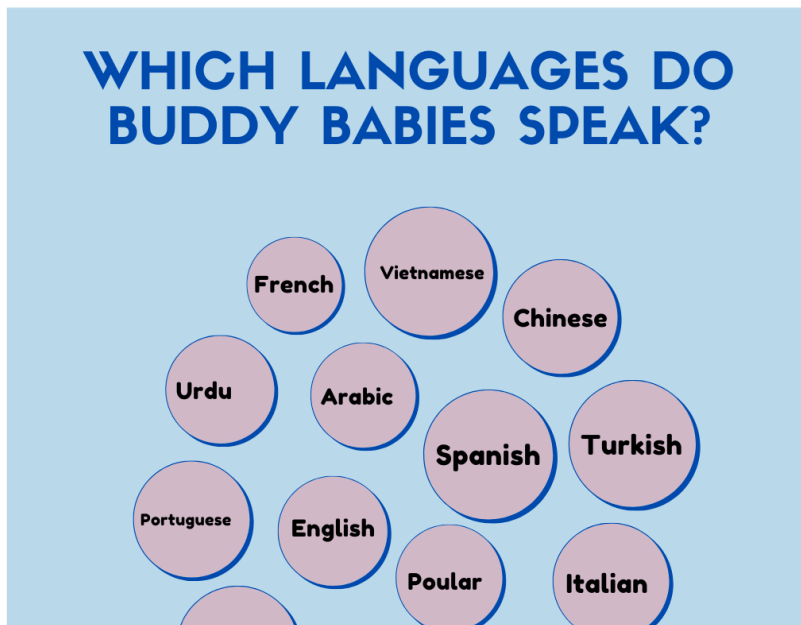
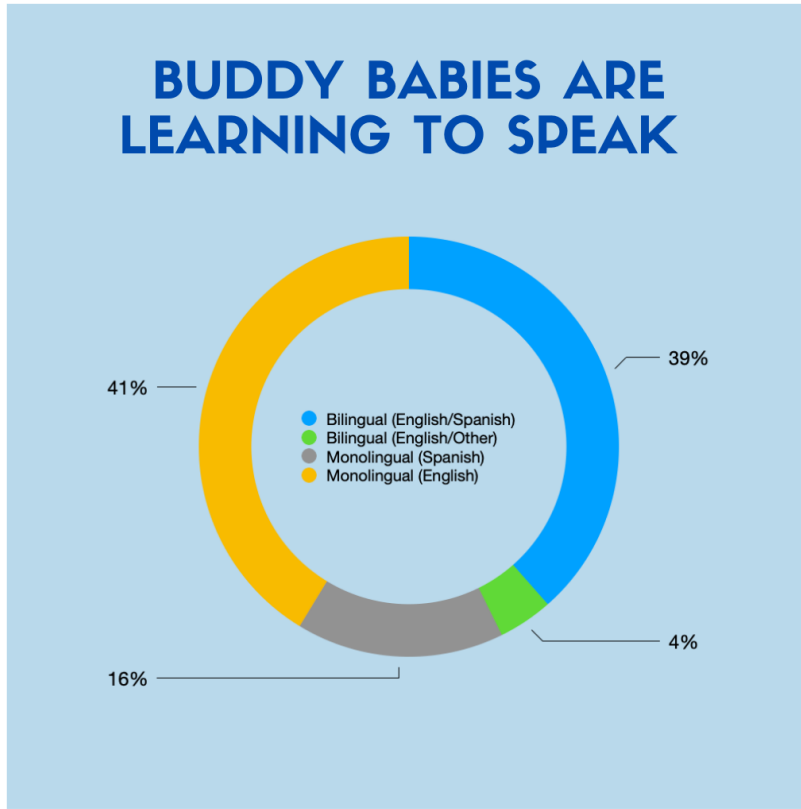


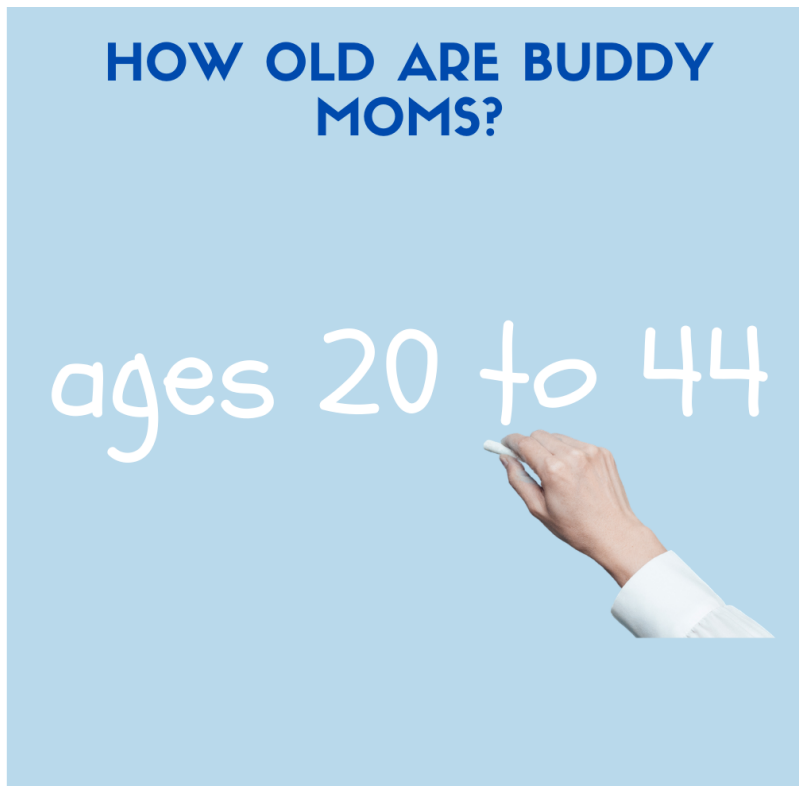
**Renata**  
**Research Assistant**

Renata is an international 2nd year masters student in Neuroscience and Education at Columbia who has been working with us since January helping out with scheduling. When asked what she is most excited for this year, she said she is “excited for many things, but most excited for in-person visits to begin again so we can go back to see the beautiful babies and everyone in-person.”

## Fun facts about our BUDDY Study families and kiddos!







## Our New BUDDY Dad Study!

We are so excited to give dads and second parents an opportunity to get involved in the BUDDY Study! Although we mainly interact with moms through the BUDDY Study, we're enjoying getting to know any dads or second parents that may be involved in your little one's life. So far, 75% of BUDDY dads are first time fathers! BUDDY dads come from all over the world, including China, the Dominican Republic, Turkey, and the USA.

We're so grateful for our BUDDY families, and getting to know any second parents helps us learn even more about your baby's life!

## Language Matters... Learn more

# Language Matters... Learn more about LENA!



So far, 77.5% of BUDDY study participants have agreed to participate in the LENA home language recording activity, and collection is still ongoing! Using the LENA recorders, we are exploring how your babies are learning language through their first few years of life. When we first met your little ones, they were just about 1-month old, but now they are babbling away!

**The LENA is an amazing tool that allows us to learn what your child is hearing and how your little ones are starting to communicate with the world around them.** This little, encrypted audio recorder that stays tucked in a special (and super cute) LENA shirt has the power to record up to 16 full hours of language from an ordinary day in your home! Then, when we get the recorder back from you, we can plug it into a computer and learn about your child's language development in just a few minutes without listening to a word!



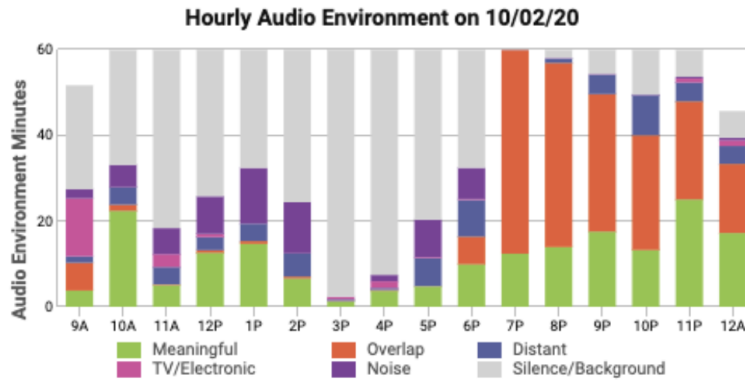
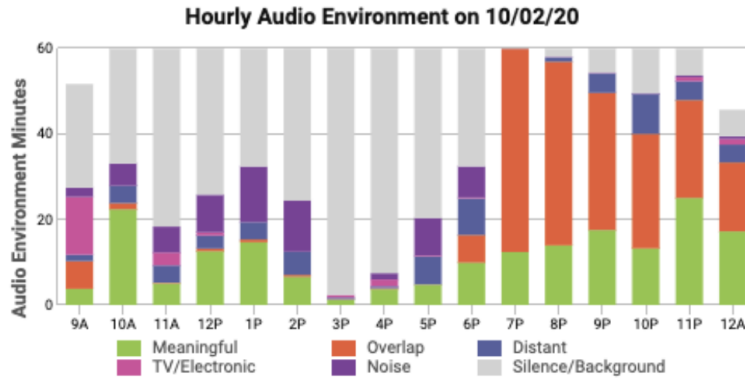
*The best part is, this activity allows us to send you a snapshot of some pretty cool data that we learned from the recording and LENA surveys! Here's an example of some of the*

<https://viewstripo.email/55f7bcd6-77de-4f79-aec3-b9e22f13c4b31602207945091>

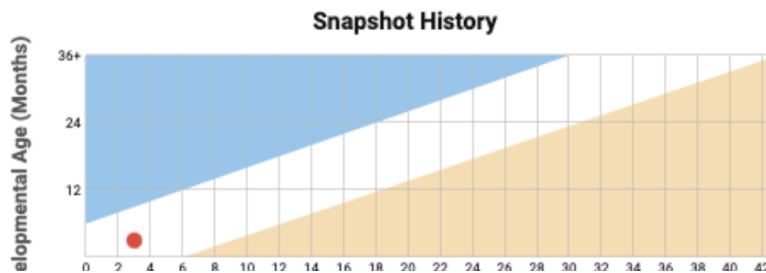
10/20/2020

Copy of New email

The best part is, this activity allows us to send you a snapshot of some pretty cool data that we learned from the recording and LENA surveys! Here's an example of some of the data you may receive below:



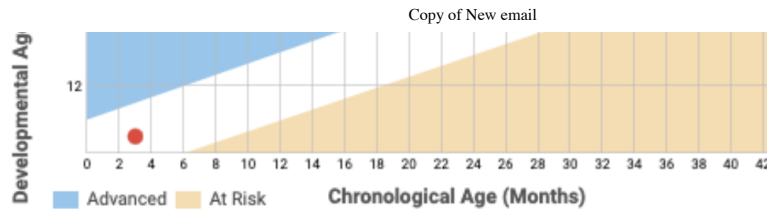
The above picture is an automated, hourly breakdown of the types of sounds that your LENA device recorded in your home throughout the day you recorded. For every hour that the LENA was recording, this graph shows you how many minutes are represented by different kinds of noise.



<https://viewstripo.email/55f7bcd6-77de-4f79-aec3-b9e22f13c4b31602207945091>



10/20/2020



This picture shows you results that come from your answers to the questions asked on the LENA Snapshot survey. These questions ask about your observations of your child's vocalizations, expressive cues, and language skills. The snapshot shows how your child's language skills are developing!

**Think you might be interested in the LENA activity, but didn't get the chance to do it at your last visit? Not to worry! There will be plenty of opportunities to do the recording at future study visits! Always feel free to reach out to our study team with any questions you may have!**

## Remember to check out our Social Media!



### Our Website

[Check out our lab website](#) to learn more about our projects, interests, and members!



### Twitter

Check out Dr. Noble's Twitter [here](#), and check out our lab twitter [here](#) for cool updates!



### Facebook

Check out our Facebook page [here](#)- remember to 'like' our page!



### Instagram

Check out our Instagram page [here](#)- remember to follow us!

**Do you know anyone interested in participating  
in child development research? Feel free to  
forward this email or send them [THIS LINK](#) to  
our database!**

*Thank you again for your ongoing participation in our research.*

**NEED Lab at Columbia University**

**Phone:** (917) 740-4123

**Email:** [NEEDLab@tc.columbia.edu](mailto:NEEDLab@tc.columbia.edu)

