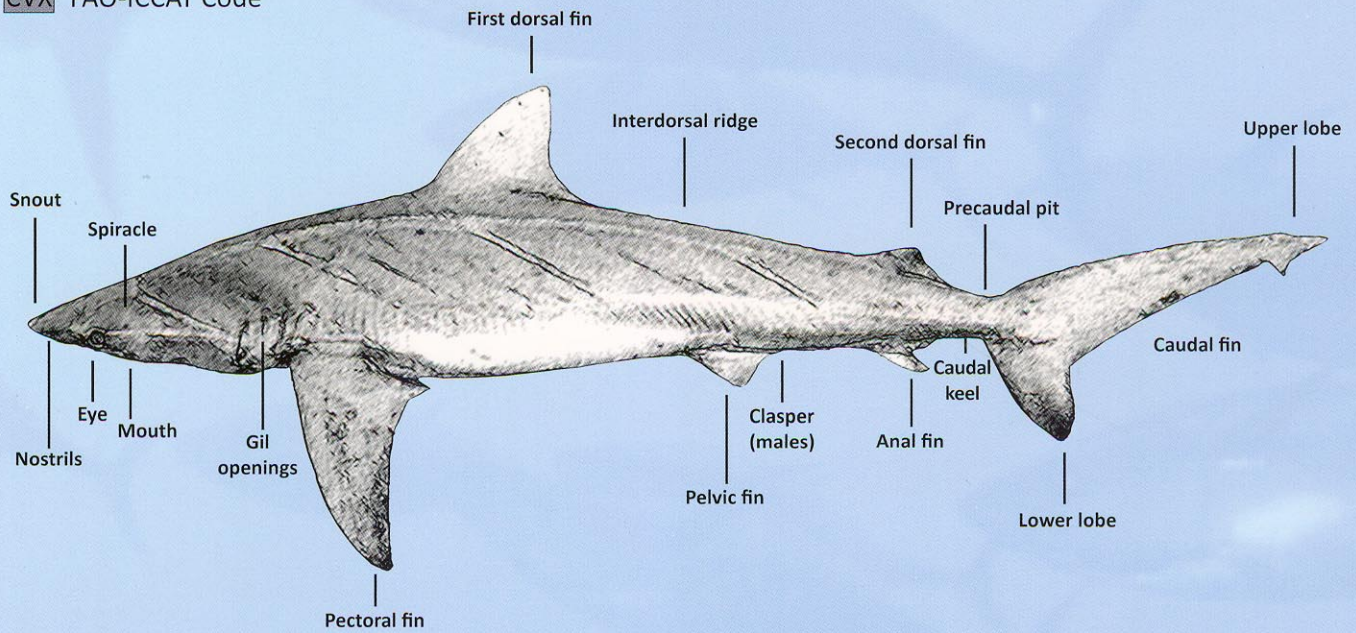


# GUIDE FOR THE IDENTIFICATION OF ATLANTIC OCEAN SHARKS

CVX FAO-ICCAT Code



Authors:

Andrés Domingo<sup>1</sup>, Enric Cortés<sup>2</sup>, Rodrigo Forselledo<sup>1</sup> and William Driggers<sup>2</sup>

<sup>1</sup> Dirección Nacional de Recursos Acuáticos, Uruguay.

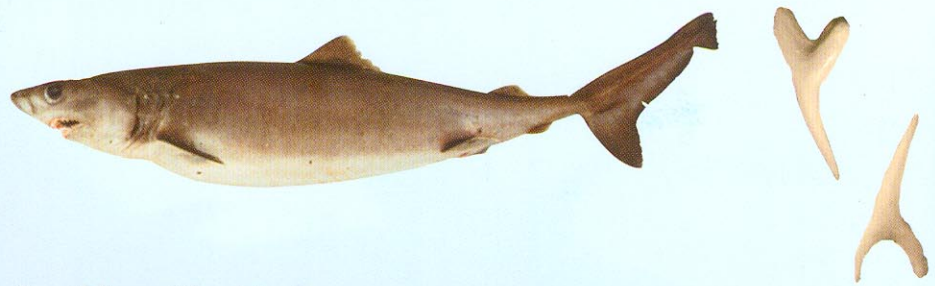
<sup>2</sup> National Oceanic and Atmospheric Administration-National Marine Fisheries Service, USA.



PCH

*Pseudocarcharias kamoharai*

Maximum size: ~ 110 cm TL

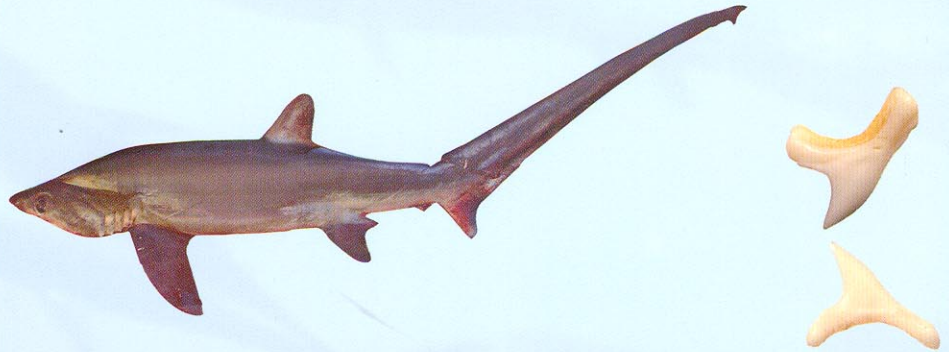


- Small fins with white tips
- Very large eyes, with no nictitating membranes
- Large, fine, prominent teeth

BTH

*Alopias superciliosus*

Maximum size: ~ 460 cm TL

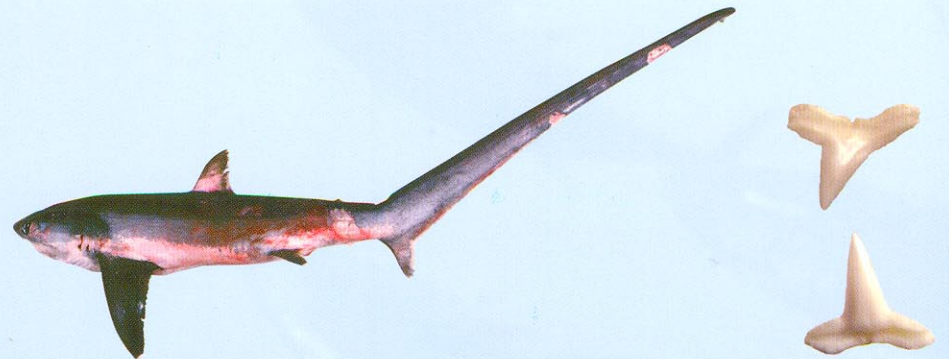


- Upper lobe of the caudal fin similar in size to the rest of the body
- Groove in the dorsal region of the head from the eyes to behind the gills slits

ALV

*Alopias vulpinus*

Maximum size : ~ 550 cm TL

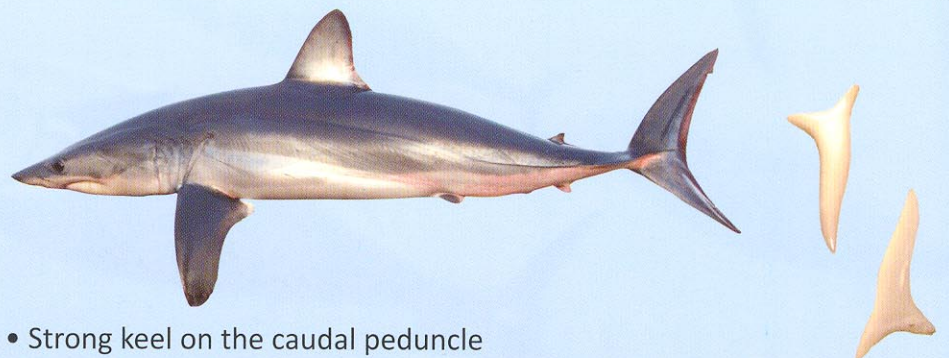


- Upper lobe of the caudal fin similar in size to the rest of the body
- White abdomen; this coloration extends above the pectoral fins

SMA

*Isurus oxyrinchus*

Maximum size : ~ 400 cm TL



- Strong keel on the caudal peduncle
- Bright blue coloration on dorsal side and undersides, white ventral side and mouth
- Fine teeth, with smooth edges



LMA

### *Isurus paucus*

Maximum size : ~ 420cm TL

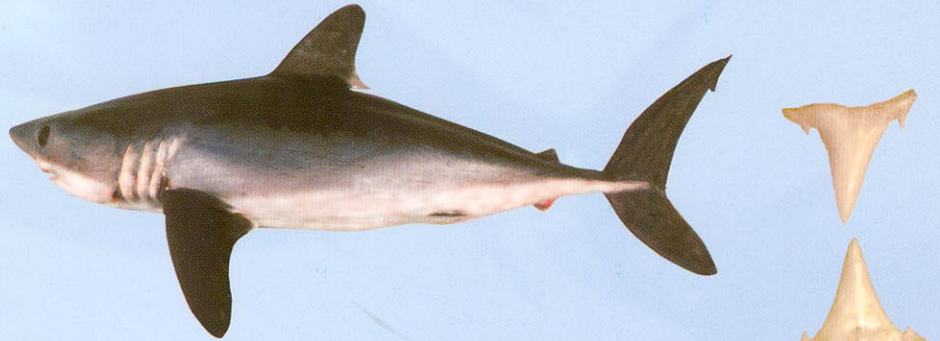


- Area around mouth dark.
- Pectoral fins as long as or longer than the head.
- Teeth very similar to *I. oxyrinchus* and larger eye diameter

POR

### *Lamna nasus*

Maximum size : ~ 300 cm TL



- First dorsal fin has white spot on the free posterior tip
- One main keel and one, smaller accessory keel on the caudal fin
- Teeth with lateral cusps

TIG

### *Galeocerdo cuvier*

Maximum size : ~ 550 cm TL

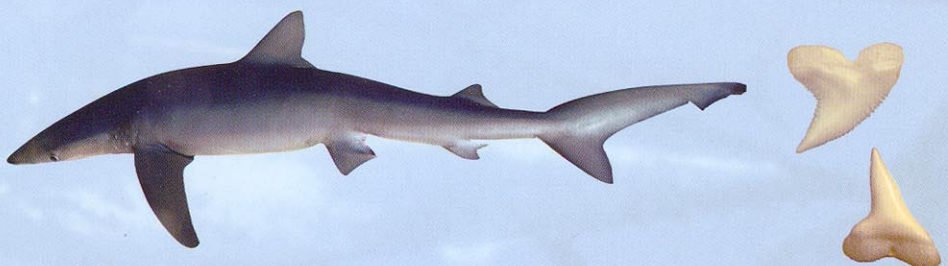
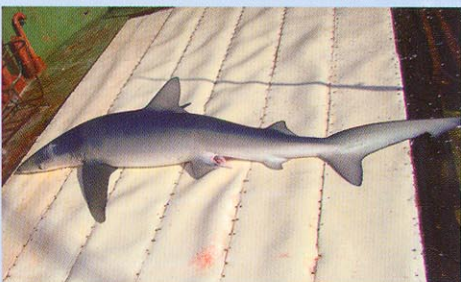


- Dark, vertical spots over the dorsal region
- Characteristic teeth (diagram)

BSH

### *Prionace glauca*

Maximum size : ~ 380 cm TL



- Bright blue dorsal side and white underside (fresh specimen)
- Very long pectoral fins
- First dorsal fin closer to the pelvic than to the pectoral fins
- Upper teeth triangular and serrated



SPL

### *Sphyrna lewini*

Maximum size : ~ 420 cm TL

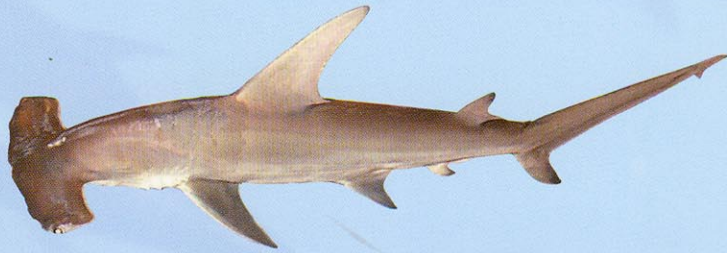


- Front margin of the head arched, with a central indentation
- Pelvic fins with straight posterior tips

SPK

### *Sphyrna mokarran*

Maximum size : ~ 550 cm TL

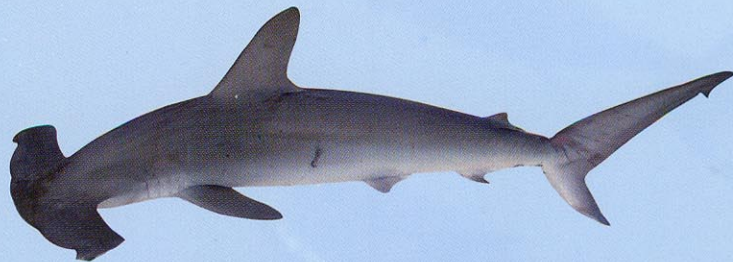


- Almost straight front margin of the head, with a central indentation
- First dorsal fin tall and curved in the upper part
- Pelvic fins with curved posterior tips

SPZ

### *Sphyrna zygaena*

Maximum size : ~ 400 cm TL



- Front margin of the head arched, with no central indentation
- Pelvic fins with straight posterior tip

RSK

### *Carcharhinus*

- Second dorsal fin much smaller than first
- Nictitating membrane present
- Mouth large and arched
- Heterocercal caudal fin
- Keels absent

