



**COMMUNITY EDUCATION  
C E N T E R S**

**[REDACTED] b6,b7c**, Supervisor  
**ICE Detention Operations  
9840 Fourwinds Drive  
San Antonio, Texas 78238**

**Supervisor [REDACTED] b6,b7c**

**Let me begin by introducing myself. I am the newly appointed Assistant Warden for McLennan County Detention Center, Falls County and the new Jack Harwell Detention Center.**

**I will be the individual that you will contact for future questions and answers posed by you and your staff. Rest assured the staff and I will make every effort to keep this facility within the acceptable guidelines.**

**I will work closely with [REDACTED] b6,b7c to ensure our compliance with ICE Standards.**

**Attached you will find the response to the five items you requested clarification by close of business Friday, October 2, 2009. I will Fed-Ex the hard copy to you Monday, October 5, 2009.**

**I look forward to working with you and meeting you during your next visit.**

**Best Regards,**

**[REDACTED] b6,b7c**

**[REDACTED] b6,b7c**

**Assistant Warden  
McLennan County Detention Center  
Waco, Texas 76701  
254-424-[REDACTED] – cell  
254-759-[REDACTED] b6,b7c – office  
254-759-8126 – fax**

**Items that need correction on the "Plan of Action" (POA)**

**1. Eyewash stations needed: Date purchased and expected date of completion.**

Eye wash stations are located in the laundry, food service and maintenance. The laundry and food service eye wash stations meet the requirements of OSHA Regulation 29 CFR 1910.132 General Requirements.

The maintenance area is regulated by OSHA standard 29 CFR 1910.151 (c) which states; Maintenance areas require an appropriate portable eyewash device containing not less than one gallon of potable water which is readily available and ready for use.

We have located a vendor to provide us with a suitable eyewash station within the guidelines of OSHA requirements for the maintenance department. The existing eyewash station, in maintenance, will be moved to the medical department when the new one is received. The expected completion date is November 30, 2009.

NOTE: See attached flyer from LSS Safety and Industrial Supply.

**2. Training on Hazard Communication/Handling of Chemicals (OSHA Right to Know Act) with date of expected completion.**

Training on Hazard Communication including the Right-to-Know Law is being accomplished for inmates and staff. MSDS are in areas where chemicals are used. Master MSDSs' are located in the Chief's Office and maintenance shop.

NOTE: See attached training documentation.

**3. Evacuation plans are not in Spanish: Date of expected completion.**

Evacuation plans have had Spanish added to them along with color coding to show evacuation routes. The updated evacuation plans were placed in designated areas throughout the facility.

NOTE: See attached updated evacuation plans.

**4. Fire Suppression System not tested quarterly. First expected date of quarterly testing.**

Quarterly testing has been accomplished starting in February 2009, then May, August and October, 2009.

NOTE: See attached documentation

**5. OIG number not reached on Pro Bono telephones. Quick system check will determine if working and if so just indicate the outcome.**

On September 30, 2009, Lieutenant [b6,b7c] was instructed to check the toll free number that allows ICE offenders to contact the Department of Homeland Security Office of the Inspector General (OIG). Lieutenant [b6,b7c] dialed the phone number which immediately went through without any problems.

NOTE: See attached memo from Lieutenant [b6,b7c].

**Hopefully, this report answers the listed items on the "Plan of Action." Please feel free to call me with any clarification needed.**

**cc: [b6,b7c] Warden MCDC  
[b6,b7c], CEC Special Assistant**



**SAFETY & INDUSTRIAL SUPPLIES**

800-356-0783

Product Index > Safety Supplies > Eye Wash Stations - Showers > Personal Eye Washes > fend-all Eyesaline™ FlashFlood Eye Wash Station

You have 3 results.

**fend-all Eyesaline™ FlashFlood Eye Wash Station**



[View Larger](#)

**fend-all**  
*Immediate First Aid Near Workplace Hazards*

**FlashFlood Personal Eye Wash Station** provides instant eye cleansing. Use as a first response for gentle, effective eye flushing. Buffered, pH-balanced Eyesaline solution is physiologically similar to human tears--

rinses eyes gently. Pull off retainer strap for three minutes of rinsing. 20"H x 10-1/2"W x 13-1/2"D. Complete with one replaceable cartridge of Eyesaline solution. **Refill Cartridges (No. 9757)** each contain 1 gal. of Eyesaline. **Wall Rack (No. 2125)** stores four refill cartridges . Safety sealed and dated. 16"H x 9-1/4"W x 8-1/4"D. **Compliance:** ANSI Z358.1-2004 (as a personal eye wash only).

Qty	Item #	Product	Sell Pack	Click For Avail	Price
<input type="checkbox"/> 0	9757	Sperian FlashFlood Saline Refill Cartridge, 1 Gal.	1 EA		1-3 \$35.50 4+ \$32.10
<input type="checkbox"/> 0	9756	Sperian FlashFlood Eyewash Station with 1-gal. Cartridge	1 EA		1-3 \$124.00 4+ \$118.00
<input type="checkbox"/> 0	2125	Sperian Fend-all Saline FlashFlood Wall Rack for Cartridges	1 EA		1-3 \$39.90 4+ \$36.10

Home | [Order Tracking](#) | [Our Guarantee](#) | [Privacy Statement](#) | [Terms of Access](#) | [Terms of Sale](#) | [Trademarks](#) | [Contact Us](#) | [Sitemap](#)

Questions and Orders: Call 1-800-356-0783 or Fax 1-800-543-9910

© 2009 Lab Safety Supply Inc.



About SSL Certificates



**SAFETY & INDUSTRIAL SUPPLIES**

800-356-0783

Product Index > Safety Supplies > Eye Wash Stations - Showers > Personal Eye Washes > fend-all Eyesaline™ FlashFlood Eye Wash Station

You have 3 results.

**fend-all Eyesaline™ FlashFlood Eye Wash Station**



[View Larger](#)

**fend-all**  
*Immediate First Aid Near Workplace Hazards*

**FlashFlood Personal Eye Wash Station** provides instant eye cleansing. Use as a first response for gentle, effective eye flushing. Buffered, pH-balanced Eyesaline solution is physiologically similar to human tears--

rinses eyes gently. Pull off retainer strap for three minutes of rinsing. 20"H x 10-1/2"W x 13-1/2"D. Complete with one replaceable cartridge of Eyesaline solution. **Refill Cartridges (No. 9757)** each contain 1 gal. of Eyesaline. **Wall Rack (No. 2125)** stores four refill cartridges. Safety sealed and dated. 16"H x 9-1/4"W x 8-1/4"D. **Compliance:** ANSI Z358.1-2004 (as a personal eye wash only).

Qty	Item #	Product	Sell Pack	Click For Avail	Price
<input type="checkbox"/> 0	9757	Sperian FlashFlood Saline Refill Cartridge, 1 Gal.	1 EA		1-3 4+ \$35.50 \$32.10
<input type="checkbox"/> 0	9756	Sperian FlashFlood Eyewash Station with 1-gal. Cartridge	1 EA		1-3 4+ \$124.00 \$118.00
<input type="checkbox"/> 0	2125	Sperian Fend-all Saline FlashFlood Wall Rack for Cartridges	1 EA		1-3 4+ \$39.90 \$36.10

Home | [Order Tracking](#) | [Our Guarantee](#) | [Privacy Statement](#) | [Terms of Access](#) | [Terms of Sale](#) | [Trademarks](#) | [Contact Us](#) | [Sitemap](#)

**Questions and Orders: Call 1-800-356-0783 or Fax 1-800-543-9910**

© 2009 Lab Safety Supply Inc.



[About SSL Certificates](#)

# Job Safety and Health It's the law!



## EMPLOYEES:

- You have the right to notify your employer or OSHA about workplace hazards. You may ask OSHA to keep your name confidential.
- You have the right to request an OSHA inspection if you believe that there are unsafe and unhealthful conditions in your workplace. You or your representative may participate in that inspection.
- You can file a complaint with OSHA within 30 days of retaliation or discrimination by your employer for making safety and health complaints or for exercising your rights under the *OSH Act*.
- You have the right to see OSHA citations issued to your employer. Your employer must post the citations at or near the place of the alleged violations.
- Your employer must correct workplace hazards by the date indicated on the citation and must certify that these hazards have been reduced or eliminated.
- You have the right to copies of your medical records and records of your exposures to toxic and harmful substances or conditions.
- Your employer must post this notice in your workplace.
- You must comply with all occupational safety and health standards issued under the *OSH Act* that apply to your own actions and conduct on the job.

## EMPLOYERS:

- You must furnish your employees a place of employment free from recognized hazards.
- You must comply with the occupational safety and health standards issued under the *OSH Act*.

This free poster available from OSHA –  
*The Best Resource for Safety and Health*



Free assistance in identifying and correcting hazards or complying with standards is available to employers, without citation or penalty, through OSHA-supported consultation programs in each state.

**1-800-321-OSHA**  
[www.osha.gov](http://www.osha.gov)

OSHA 3195-12-00R



# Training Record Attendance Roster

Facility: MCDC

Class number: 2009-05-01-CL-17

Date: 05/01/2009

Title(s) of Training Topic: JOB SAFETY/ RIGHT TO KNOW

Student will demonstrate the proper usage and storage of chemicals used in the facility. A handout will be given to each student. They will be able to demonstrate how to read a material safety data sheet. A 10 question test will be given at end of class

Trainer of Record:

b6,b7c

Lt.

b6,b7c

Name (Printed)

Title

Signature

List those that attended this training below.

	Print Name	Signature 1 <sup>st</sup> half of day	Signature 2 <sup>nd</sup> half of day
1			
2			
3			
4			
5	b6,b7c	b6,b7c	
6			
7			
8			
9			
10			
11			
12			
13			
14			
15			

Certified by

b6,b7c

Date:

6-18-09



# Training Record Attendance Roster

Facility: **MCDC**

Class number: **2009-04/17-CL-16**

Date: **04/17/2009**

Title(s) of Training Topic: **JOB SAFETY, RIGHT TO KNOW**

Student will learn the proper usage and storage of chemicals used in the facility. They will be able to demonstrate how to read a material safety data sheet. A handout will be given and a 10 question test will be taken at the end of class.

Trainer of Record: b6,b7c

Lt.

b6,b7c

Name (Printed)

Title

**List those that attended this training below.**

	Print Name	Signature 1 <sup>st</sup> half of day	Signature 2 <sup>nd</sup> half of day
1	b6,b7c		
2			
3			
4			
5			
6			
7			
8			
9			
10			
11			
12			
13			
14			
15			

Certified by: b6,b7c (Trainer/Trnr and Sign Name)

Date: **4-21-09**



# INMATE CHEMICAL TRAINING LOG

CHEMICAL NAME	TRAINING RECEIVED	INMATE	TR
Blast			
Super Glue			
Rust Oleum Spray Paint			
Clean Strip Stripper			
Brake Cleaner			
Grasp			
Flux			
Silicone			
Latex Paint			
Fiberglass			

b6,b7c

# INMATE CHEMICAL TRAINING LOG

CHEMICAL NAME	TRAINING RECEIVED	INMATE	TRA
Brake Cleaner			
Grasp			
Flux			
Silicone			
Latex Paint			
Fiberglass			
Odo Ban			
Grease Lightning			
WD-40			
Drain out			

b6,b7c

# INMATE CHEMICAL TRAINING LOG

CHEMICAL NAME	TRAINING RECEIVED	INMATE	TR
Odo-BAN			
" "			
Odo-BAN			
Grease Lightning			
WD-40			
Drain-Out			
Blast			
Super Glue			
Rust oleum Spray Pa			
Clean Strip - Stripp			

b6,b7c

# INMATE CHEMICAL TRAINING LOG

CHEMICAL NAME	TRAINING RECEIVED	INMATE	T
All purpose cleaner #505 Glass Cleaner Germicide #205 mop pad #1802 WAX 2414 Bathroom Cleaner #505	proper usage, safety precautions where to find MSDS		
All purpose cleaner #505 Glass Cleaner Germicide #205 mop pad #1802 WAX 2414 Bathroom Cleaner #505	proper usage safety precautions where to find MSDS		
All purpose cleaner #505 Glass Cleaner Germicide #205 mop pad #1802 WAX 2414 Bathroom Cleaner #505	proper usage, safety precautions where to find MSDS		
All purpose cleaner #505 Glass Cleaner Germicide #205 mop pad #1802 WAX 2414 Bathroom Cleaner #505	proper usage, safety precautions where to find MSDS		
All purpose cleaner #505 Glass Cleaner Germicide #205 mop pad #1802 WAX 2414 Bathroom Cleaner #505	proper usage, safety precaution where to find MSDS		
All purpose cleaner #505 Glass Cleaner Germicide #205 mop pad #1802 WAX 2414 Bathroom Cleaner #505	proper usage, safety precaution where to find MSDS		
All purpose cleaner #505 Glass Cleaner Germicide #205 mop pad #1802 WAX 2414 Bathroom Cleaner #505	proper usage, safety precaution where to find MSDS		
All purpose cleaner #505 Glass Cleaner Germicide #205 mop pad #1802 WAX 2414 Bathroom Cleaner #505	proper usage, safety precautions where to find MSDS		
All purpose cleaner #505 Glass Cleaner Germicide #205 mop pad #1802 WAX 2414 Bathroom Cleaner #505	proper usage, safety precautions where to find MSDS		
All purpose cleaner #505 Glass Cleaner Germicide #205 mop pad #1802 WAX 2414 Bathroom Cleaner #505	proper usage, safety precautions where to find MSDS		

b6.b7c

# INMATE CHEMICAL TRAINING LOG

CHEMICAL NAME	TRAINING RECEIVED	INMATE
All purpose cleaner #505 Glass Cleaner Germicidal #205 mop pad #1802 Wax #2414 Bathroom Cleaner #505	PROPER USAGE, SAFETY PRECAUTIONS WHERE TO FIND MSDS	
All purpose cleaner #505 Glass Cleaner Germicidal #205 mop pad #1802 Wax #2414 Bathroom Cleaner #505	PROPER USAGE, SAFETY PRECAUTIONS WHERE TO FIND MSDS	
All purpose cleaner #505 Glass Cleaner Germicidal #205 mop pad #1802 Wax #2414 Bathroom Cleaner #505	PROPER USAGE SAFETY PRECAUTIONS WHERE TO FIND MSDS	
All purpose cleaner #505 Glass Cleaner Germicidal #205 mop pad #1802 Wax #2414 Bathroom Cleaner #505	PROPER USAGE SAFETY PRECAUTIONS WHERE TO FIND MSDS	
All purpose cleaner #505 Glass Cleaner Germicidal #205 mop pad #1802 Wax #2414 Bathroom Cleaner #505	PROPER USAGE SAFETY PRECAUTIONS WHERE TO FIND MSDS	
All purpose cleaner #505 Glass Cleaner Germicidal #205 mop pad #1802 Wax #2414 Bathroom Cleaner #505	PROPER USAGE, SAFETY PRECAUTIONS WHERE TO FIND MSDS	
All purpose cleaner #505 Glass Cleaner Germicidal #205 mop pad #1802 Wax #2414 Bathroom Cleaner #505	PROPER USAGE, SAFETY PRECAUTIONS WHERE TO FIND MSDS	
All purpose cleaner #505 Glass Cleaner Germicidal #205 mop pad #1802 Wax #2414 Bathroom all purpose cleaner #505	PROPER USAGE SAFETY PRECAUTIONS WHERE TO FIND MSDS	
All purpose cleaner #505 Glass Cleaner Germicidal #205 mop pad #1802	PROPER USAGE SAFETY PRECAUTIONS WHERE TO FIND MSDS	

b6, b7c

# INMATE CHEMICAL TRAINING LOG

TRAINING RECEIVED

INMATE

TRAINER

55 1802 1505	PROPER USAGE, SAFETY PRECAUTIONS, WHERE TO FIND MSDS
cleaner 802 1505	PROPER USAGE, SAFETY PRECAUTIONS WHERE TO FIND MSDS
cleaner 02 1505	PROPER USAGE, SAFETY PRECAUTIONS WHERE TO FIND MSDS
cleaner 802 1505	SAFETY PRECAUTIONS, WHERE TO FIND MSDS, PROPER USAGE
cleaner 13 1505	PROPER USAGE, SAFETY PRECAUTIONS WHERE TO FIND MSDS
cleaner 13 1505	PROPER USAGE, SAFETY PRECAUTIONS WHERE TO FIND MSDS
cleaner 13 1505	PROPER USAGE, SAFETY PRECAUTIONS WHERE TO FIND MSDS
cleaner 13 1505	PROPER USAGE, SAFETY PRECAUTIONS WHERE TO FIND MSDS
cleaner 13 1505	PROPER USAGE, SAFETY PRECAUTIONS WHERE TO FIND MSDS
cleaner 13 1505	PROPER USAGE, SAFETY PRECAUTIONS WHERE TO FIND MSDS



4/28/08  
4/28/08  
1/28/08  
1/28/08  
1/30/08  
1/30/08  
1/30/08  
1/30/08  
1/30/08  
1/30/08  
1/30/08

b6, b7c

# INMATE CHEMICAL TRAINING LOG

CHEMICAL NAME	TRAINING RECEIVED	INMATE TR/
Deppacite Floor, Gold Floor Finish Germicide All Purpose Cleaner	Types of chemicals, Locations Dispensed, PPE, Storage, First Aid, MSDS	
Deppacite Floor, Gold Floor Finish Germicide All Purpose Cleaner	Types of chemicals, Locations Dispensed, PPE, Storage, First Aid, MSDS.	
Deppacite Floor Gold Floor Finish Germicide All Purpose Cleaner	Types of chemicals, Locations Dispensed, PPE, Storage, First Aid, MSDS.	
Deppacite Floor Gold Floor Finish Germicide All Purpose Cleaner	Types of chemicals, Locations Dispensed, PPE, Storage, First Aid, MSDS.	
Deppacite Floor Gold Floor Finish Germicide All Purpose Cleaner	Types of chemicals, Locations Dispensed, PPE, Storage, First Aid, MSDS	
Deppacite Floor Gold Floor Finish Germicide All Purpose Cleaner	Types of chemicals, Locations Dispensed, PPE, Storage, First Aid, MSDS.	
Deppacite Floor Gold Floor Finish Germicide All Purpose Cleaner	Types of chemicals, Locations Dispensed, PPE, Storage, First Aid, MSDS.	
Deppacite Floor Gold Floor Finish Germicide All Purpose Cleaner	Types of chemicals, Locations Dispensed, PPE, Storage, First Aid, MSDS.	
Deppacite Floor Gold Floor Finish Germicide All Purpose Cleaner	Types of chemicals, Locations Dispensed, PPE, Storage, First Aid, MSDS.	
Deppacite Floor Gold Floor Finish Germicide All Purpose Cleaner	Types of chemicals, Locations Dispensed, PPE, Storage, First Aid, MSDS.	

b6,b7c

# INMATE CHEMICAL TRAINING LOG

CHEMICAL NAME	TRAINING RECEIVED	INMATE	TRA
Barbicide	Types of chemicals, Location Dispensed, PPE, Storage, First Aid, MSDS.		
Depiactite Floor, Gold Floor Finish, Germicide All Purpose Cleaner	Types of chemicals, Location Dispensed, PPE, Storage, First Aid, MSDS.		
Depiactite Floor, Gold Floor Finish, Germicide All Purpose Cleaner	Types of chemicals, Location Dispensed, PPE, Storage, First Aid, MSDS.		
Depiactite Floor, Gold Floor Finish, Germicide All Purpose Cleaner	Types of chemicals, Locations Dispensed, PPE, Storage, First Aid, MSDS.		
Depiactite Floor, Gold Floor Finish, Germicide All Purpose Cleaner	Types of chemicals, Locations Dispensed, PPE, Storage, First Aid, MSDS.		
Depiactite Floor, Gold Floor Finish, Germicide All Purpose Cleaner	Types of chemicals, Locations Dispensed, PPE, Storage, First Aid, MSDS.		
Depiactite Floor, Gold Floor Finish, Germicide All Purpose Cleaner	Types of chemicals, Locations Dispensed, PPE, Storage, First Aid, MSDS.		
Depiactite Floor, Gold Floor Finish, Germicide All Purpose Cleaner	Types of chemicals, Locations Dispensed, PPE, Storage, First Aid, MSDS.		
Depiactite Floor, Gold Floor Finish, Germicide All Purpose Cleaner	Types of chemicals, Locations Dispensed, PPE, Storage, First Aid, MSDS.		
Depiactite Floor, Gold Floor Finish, Germicide All Purpose Cleaner	Types of chemicals, Locations Dispensed, PPE, Storage, First Aid, MSDS.		

b6,b7c



# INMATE CHEMICAL TRAINING LOG

CHEMICAL NAME	TRAINING RECEIVED	INMATE	TR
All Purpose Cleaners # 505, Glass Cleaners Germicide #205, MOPPAC #1802 Wax # 2464, Bathroom Cleaners # 505	Types of chemicals, Location Dispensed, PPE, Storage, First Aid, MSDS.		
All Purpose Cleaners # 505, Glass Cleaners Germicide #205, MOPPAC #1802 Wax # 2464, Bathroom Cleaners # 505	Types of chemicals, Location Dispensed, PPE, Storage, First Aid, MSDS.		
All Purpose Cleaners # 505, Glass Cleaners Germicide #205, MOPPAC #1802 Wax # 2464, Bathroom Cleaners # 505	Types of chemicals, Location Dispensed, PPE, Storage, First Aid, MSDS.		
All Purpose Cleaners # 505, Glass Cleaners Germicide #205, MOPPAC #1802 Wax # 2464, Bathroom Cleaners # 505	Types of chemicals, Location Dispensed, PPE, Storage, First Aid, MSDS.		
All Purpose Cleaners # 505 Glass Cleaners Germicide #205, MOPPAC #1802 Wax # 2464, Bathroom Cleaners # 505	Types of chemicals, Location Dispensed, PPE, Storage, First Aid, MSDS.		
All Purpose Cleaners # 505, Glass Cleaners Germicide # 205, MOPPAC #1802 Wax # 2464, Bathroom Cleaners # 505	Types of chemicals, Location Dispensed, PPE, Storage, First Aid, MSDS.	b6, b7c	
All Purpose Cleaners # 505, Glass Cleaners Germicide #205, MOPPAC #1802 Wax # 2464, Bathroom Cleaners # 505	Types of chemicals, Location Dispensed, PPE, Storage, First Aid, MSDS.		
All Purpose Cleaners # 505, Glass Cleaners Germicide #205, MOPPAC #1802 Wax # 2464, Bathroom Cleaners # 505	Types of chemicals, Location Dispensed, PPE, Storage, First Aid, MSDS.		
All Purpose Cleaners # 505, Glass Cleaners Germicide #205, MOPPAC #1802 Wax # 2464, Bathroom Cleaners # 505	Types of chemicals, Location Dispensed, PPE, Storage, First Aid, MSDS.		
All Purpose Cleaners # 505, Glass Cleaners Germicide #205, MOPPAC #1802 Wax # 2464, Bathroom Cleaners # 505	Types of chemicals, Location Dispensed, PPE, Storage, First Aid, MSDS.		

# INMATE CHEMICAL TRAINING LOG

CHEMICAL NAME	TRAINING RECEIVED	INMATE	TI
Liq. SATIN SHINE, GREASE STRIP PLUS ULTRASAN, ECOTEMP ULTRA KLENE LIME-A-WAY, pink lotion cleaner, Mopox	types of chemicals, locations, how dispensed, PPE, STORAGE, first aid MSDS		
Liq. SATIN SHINE, GREASE STRIP PLUS ULTRASAN, ECOTEMP ULTRA KLENE LIME-A-WAY, pink lotion cleaner, Mopox	Types of chemicals, locations, Dispensed, PPE, Storage, First Aid, MSDS.		
Liq. SATIN SHINE, GREASE STRIP PLUS ULTRASAN, ECOTEMP, ULTRA KLENE LIME-A-WAY, pink lotion cleaner, Mopox	Types of chemicals, Locations, Dispensed, PPE, Storage, First Aid, MSDS.		
Liq. SATIN SHINE, GREASE STRIP PLUS ULTRASAN, ECOTEMP ULTRA KLENE LIME-A-WAY, pink lotion cleaner, Mopox	Types of chemicals, Locations, Dispensed, PPE, Storage, First Aid, MSDS.		
Liq. SATIN SHINE, GREASE STRIP PLUS ULTRASAN, ECOTEMP ULTRA CLEAN LIME-A-WAY, pink lotion cleaner, Mopox	Types of chemicals, Locations Dispensed, PPE, Storage, First Aid, MSDS.		
Liq. SATIN SHINE, GREASE STRIP PLUS ULTRASAN, ECOTEMP ULTRA CLEAN LIME-A-WAY, pink lotion cleaner, Mopox	Types of chemicals, Locations, Dispensed, PPE, Storage, First Aid, MSDS		
Liq. SATIN SHINE, GREASE STRIP PLUS ULTRASAN, ECOTEMP ULTRA CLEAN LIME-A-WAY, pink lotion cleaner, Mopox	Types of chemicals, Locations, Dispensed, PPE, Storage, First Aid, MSDS		
Liq. SATIN SHINE, GREASE STRIP PLUS ULTRASAN, ECOTEMP ULTRA CLEAN LIME-A-WAY, pink lotion cleaner	Types of chemicals, Locations, Dispensed, PPE, STORAGE, First Aid, MSDS		
Liq. SATIN SHINE, GREASE STRIP PLUS ULTRASAN, ECOTEMP ULTRA CLEAN	Types of chemicals, Locations, Dispensed, PPE, Storage, First Aid, MSDS		
Liq. SATIN SHINE, GREASE STRIP PLUS ULTRASAN, ECOTEMP ULTRA CLEAN	Types of chemicals, Locations, Dispensed, PPE, Storage, First Aid, MSDS		

b6, b7c

# INMATE CHEMICAL TRAINING LOG

	TRAINING RECEIVED	INMATE	TRAINER	DATE
#1802 #505	proper usage Safety precautions where to find MODS			4-1-08
#1802 #505	proper usage Safety precautions where to find MODS			4-1-08
#1802 #505	proper usage Safety precautions where to find MODS			4-2-08
#1802 #505	proper usage Safety precautions where to find MODS			4-2-08
#1802 #505	proper usage Safety precautions where to find MODS			4-2-08
#1802 #505	proper usage Safety precautions where to find MODS			4-2-08
#1802 #505	proper usage Safety precautions where to find MODS			4-2-08
	Types of chemicals, locations dispensed, PPE, storage First Aid, MSDS.			4-2-08

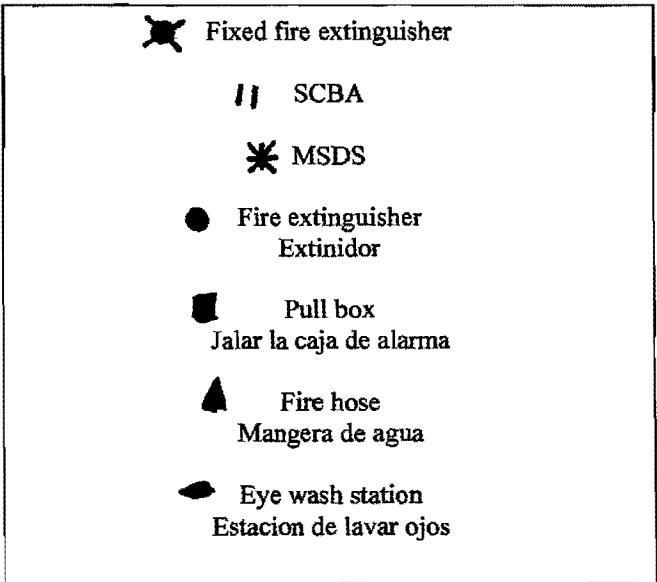
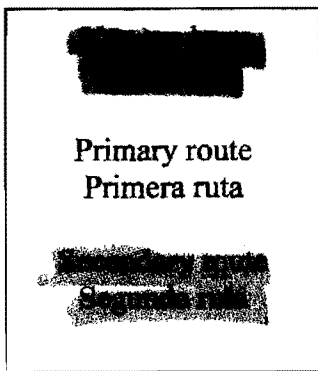
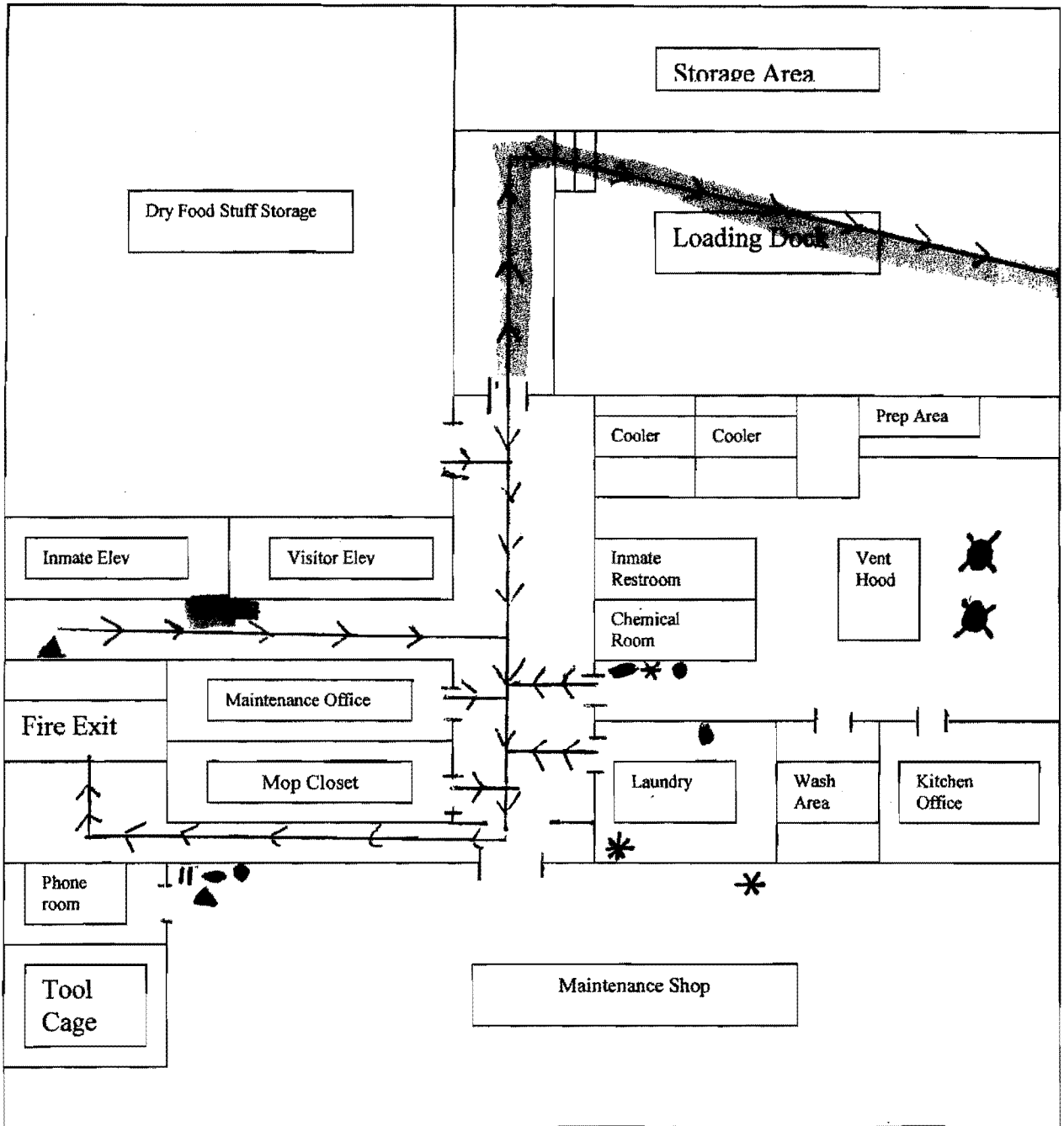
b6,b7c

orderly  
↓  
Barber

# INMATE CHEMICAL TRAINING LOG

CHEMICAL NAME	TRAINING RECEIVED	INMATE	TRA
Depoalite Floor Gold Floor Finish Germicide All Purpose Cleaner	Types of chemicals, Locations Dispensed, PPE, Storage, First Aid, MSDS.		
Depoalite Floor Gold Floor Finish Germicide All Purpose Cleaner	Types of chemicals, Locations Dispensed, PPE, Storage First Aid, MSDS		
All Purpose Cleaner #505, Glass Cleaner Germicidal #205, MOPAC #1802 Wax #2464, Bathroom Cleaner #505	Proper usage Safety Precautions Where to find MSDS		
AP Cleaner #505, Glass cleaner Germicidal #205, MOPAC #1802 Wax #2464, Bathroom Cleaner #505	Proper Usage Safety Precautions Where to find MSDS		
AP Cleaner #505, Glass cleaner Germicidal #205, MOPAC #1802 Wax #2464, Bathroom Cleaner #505	Proper Usage Safety Precautions Where to find MSDS		
AP Cleaner #505, Glass cleaner Germicidal #205, MOPAC #1802 Wax #2464, Bathroom Cleaner #505	Proper Usage Safety Precautions Where to find MSDS		
AP Cleaner #505, Glass cleaner Germicidal #205, MOPAC #1802 Wax #2464, Bathroom Cleaner #505	Proper usage Safety precautions Where to find MSDS		
AP Cleaner #505, Glass cleaner Germicidal #205, MOPAC #1802 Wax #2464, Bathroom Cleaner #505	Proper usage Safety precautions Where to find MSDS		
AP Cleaner #505, Glass cleaner Germicidal #205, MOPAC #1802 Wax #2464, Bathroom Cleaner #505	Proper usage Safety precautions Where to find MSDS		
AP Cleaner #505, Glass cleaner Germicidal #205, MOPAC #1802 Wax #2464, Bathroom Cleaner #505	Proper usage Safety precautions Where to find MSDS		

b6,b7c

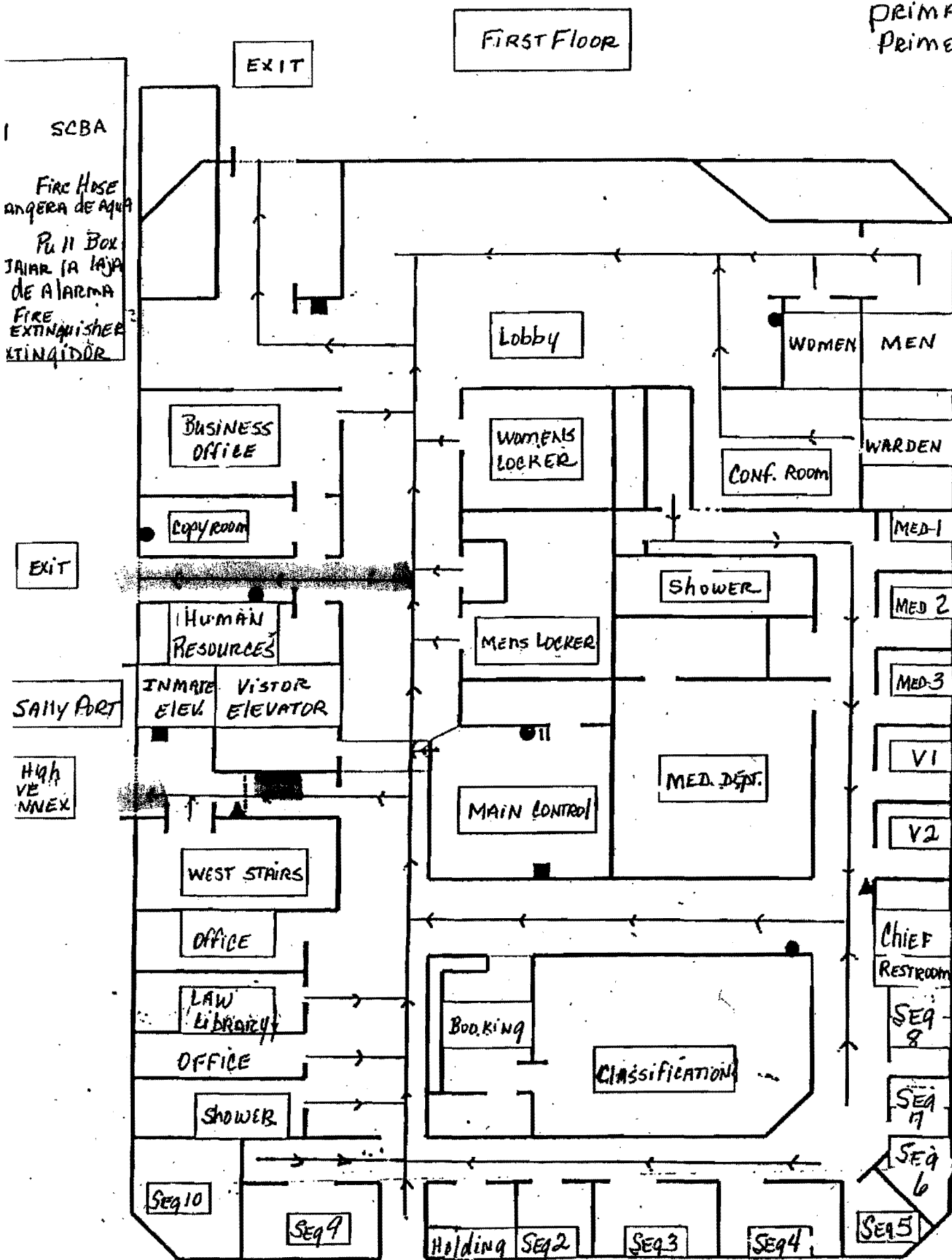


Basement

**YOU ARE HERE**  
ESTAS AQUI

**SECONDARY ROUTE**  
SEGUNDA RUTA

**PRIMARY ROUTE**  
PRIMERA RUTA

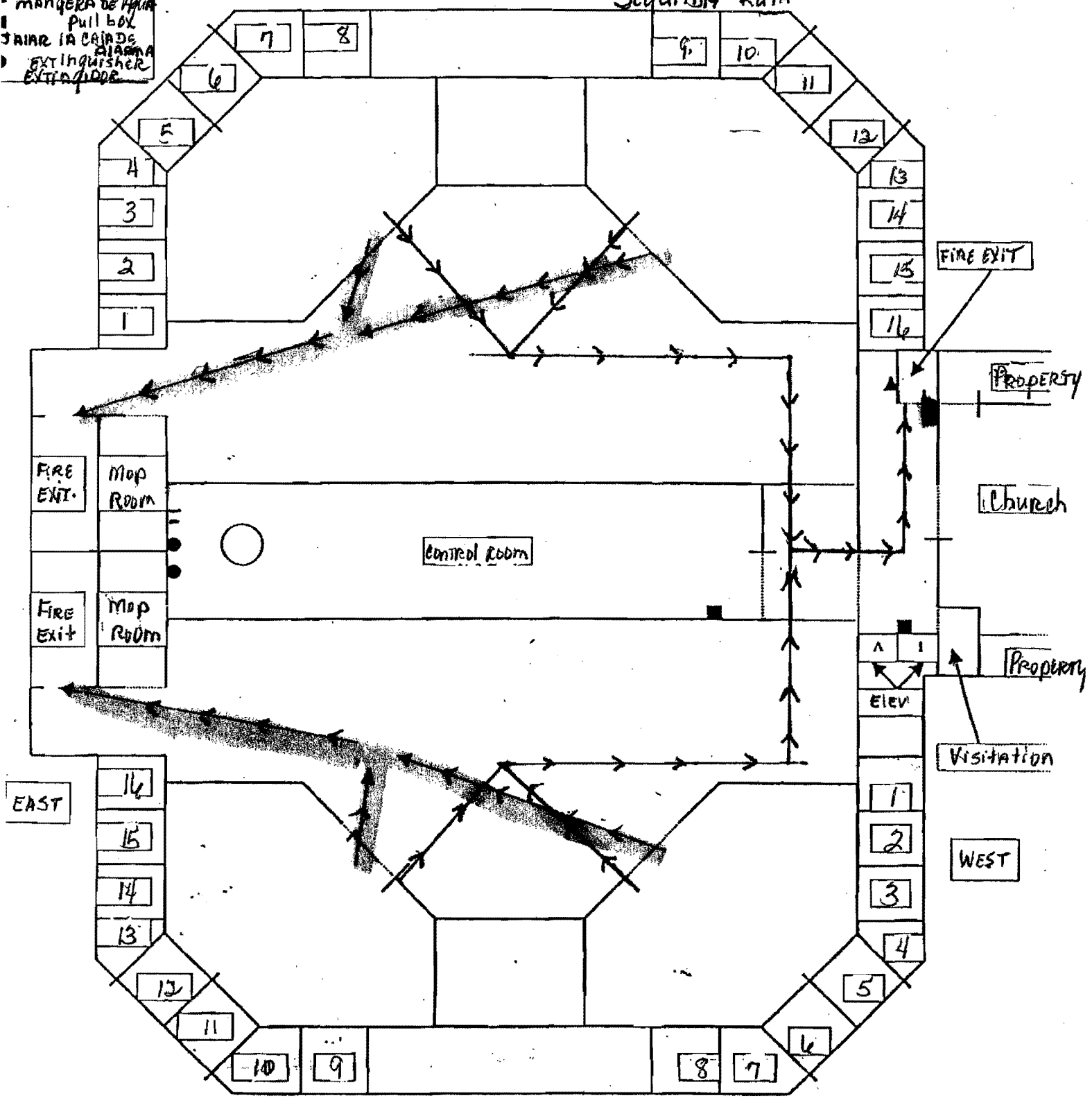


YOU ARE HERE  
ESTAS AQUI

PRIMARY ROUTE  
PRIMERA RUTA

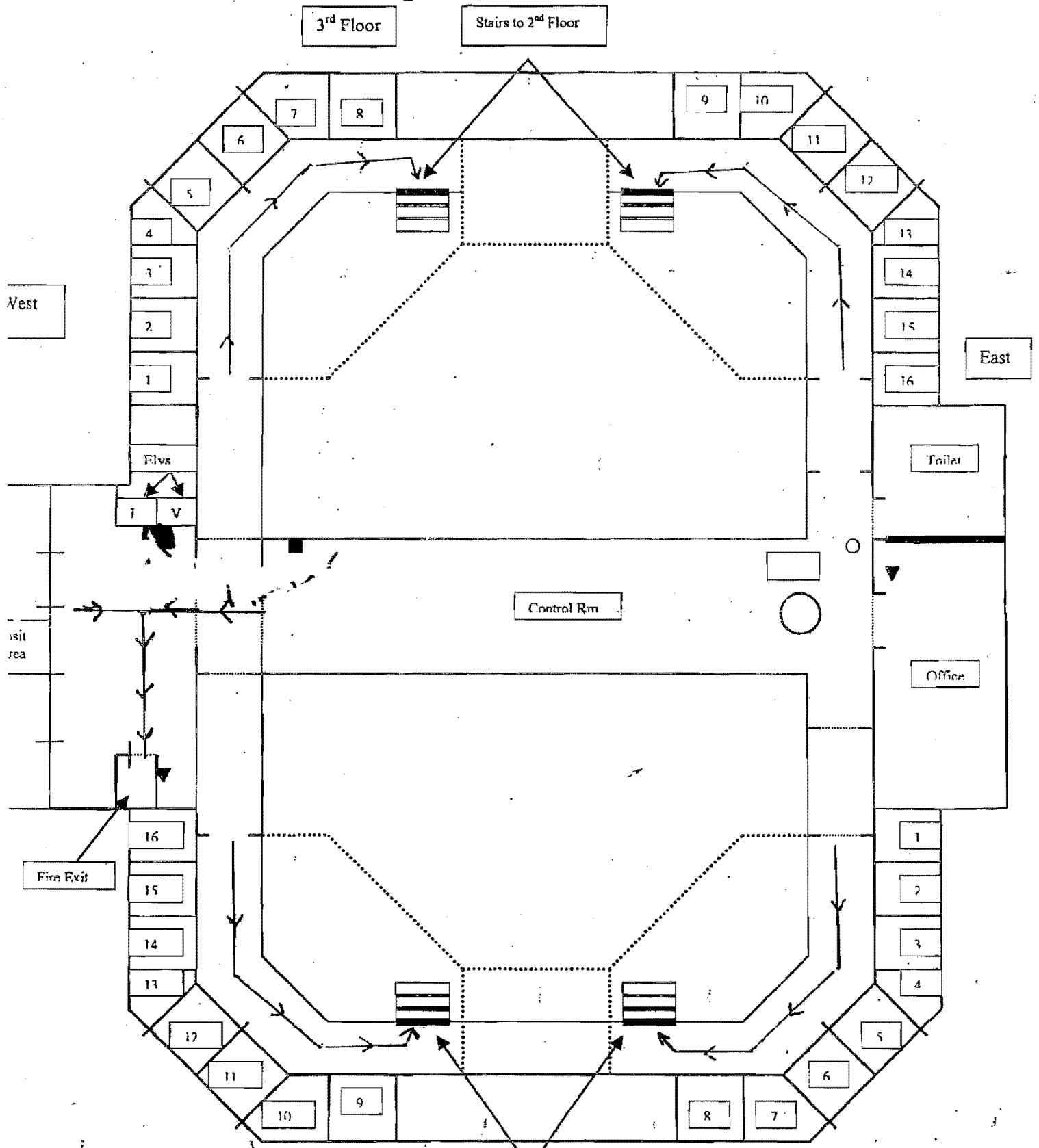
SECONDARY ROUTE  
SEGUNDA RUTA

- SCBA
- FIRE HOSE
- mANGERA DE AGUA
- PULL BOX
- JARRA IA CAJAS
- ALARMA
- EXTINGUISHER
- EXTINGUIDOR



2ND FLOOR

EMERGENCY EXITS



PRIMERA RUTA — Primary Route  
 SEGUNDA RUTA — Secondary Routes

■ YOU ARE HERE

Fire Extinguisher	●
EXTINGUIDOR	●
Pull Box	■
JALIN A LA CASA	■
DE ALARMA	■
Fire Hose	▼
MANERA DE AGUA	▼

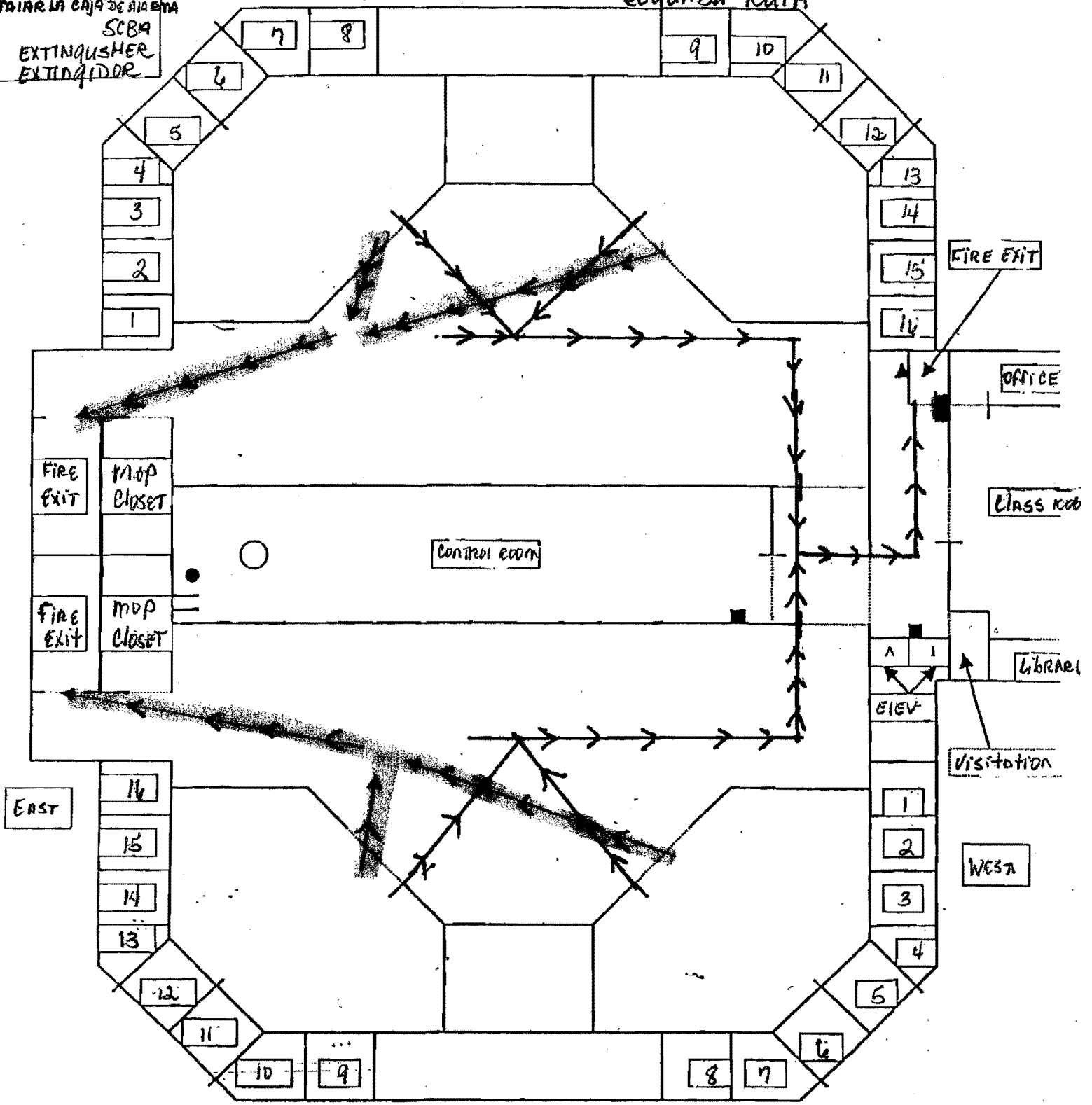


YOU ARE HERE  
ESTAS AQUI

PRIMARY ROUTE  
PRIMERA RUTA

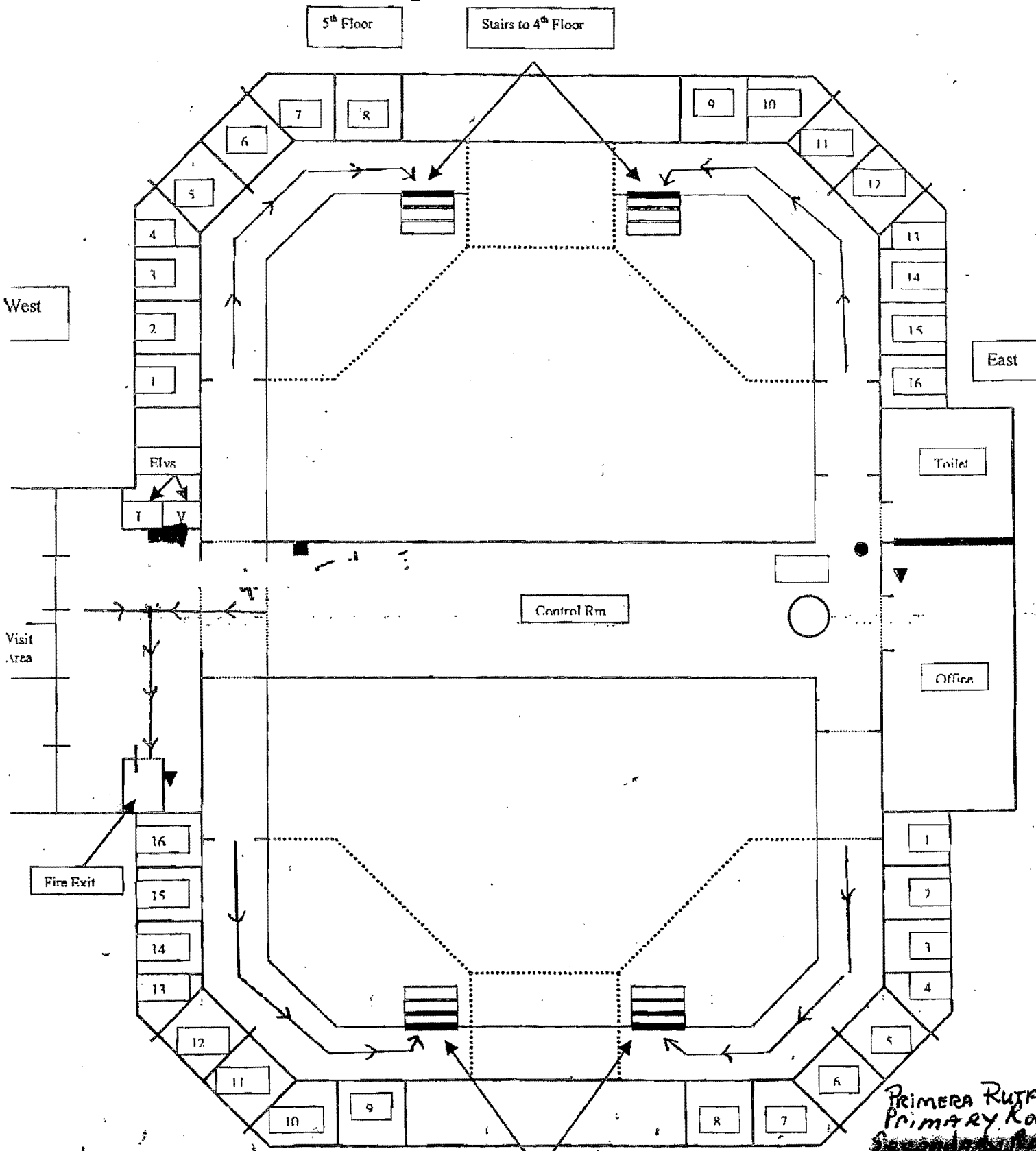
SECONDARY ROUTE  
SEGUNDA RUTA

- ▲ FIRE HOSE  
MANERA DE AGUA
- PULL BOX  
JARRA LA CAJA DE AGUA
- SCBA
- EXTINGUISHER  
EXTINGUIDOR



4th floor

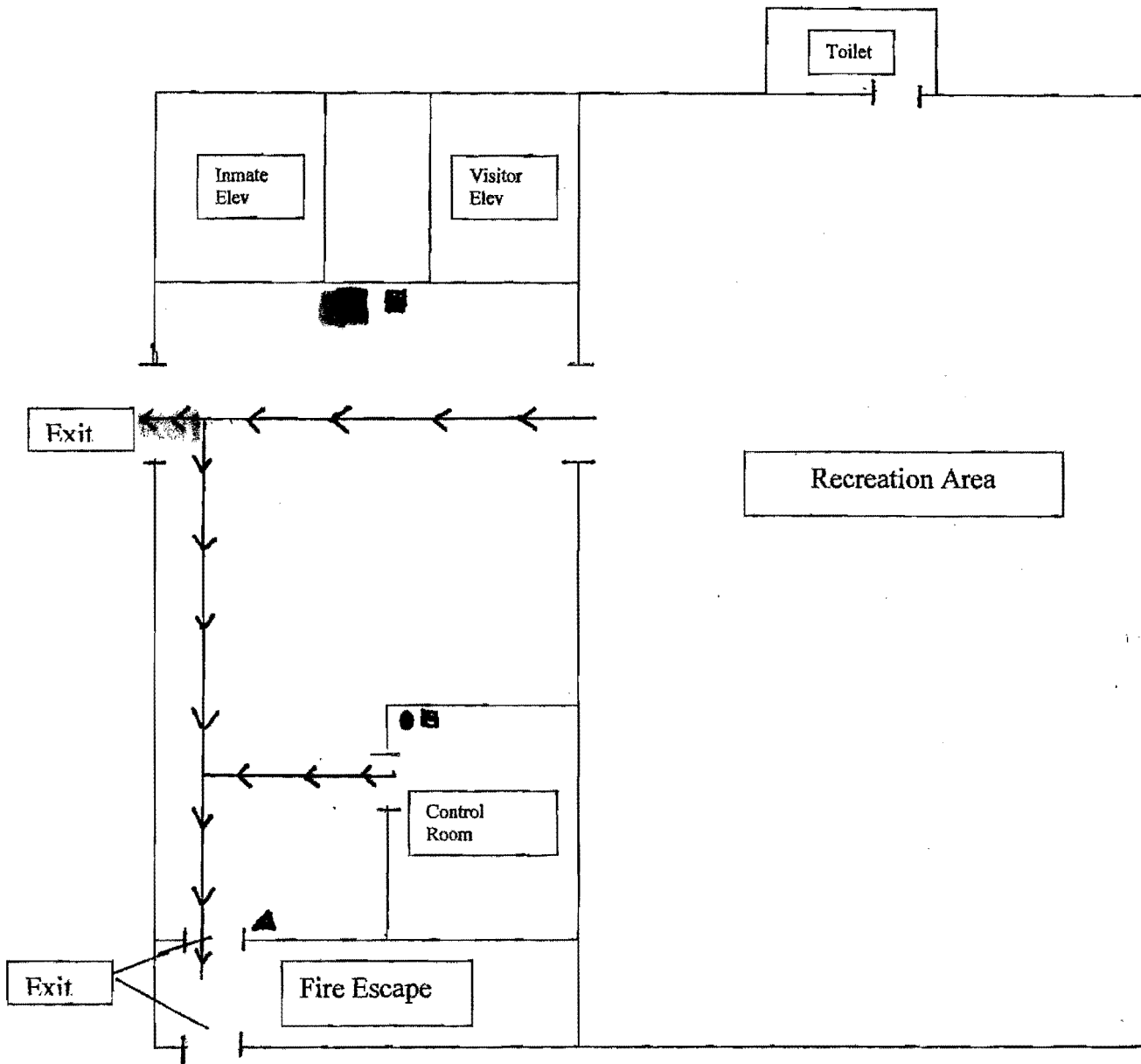
EMERGENCY EXITS



YOU ARE HERE  
ESTAS AQUI

Fire Extinguisher ●  
 EXTINQUIDOR  
 Pull Box ■  
 JALAR LA CATA  
 DE BARRERA  
 Fire Hose  
 MANGERA DE AGUA

PRIMERA RUTA  
PRIMARY ROUTE  
~~SECONDARY ROUTE~~  
SEGUNDA RUTA



■ Pull Box  
 Jalar la caja de alarma  
 ▲ Fire Hose  
 Mangera de Agua  
 ● Extinguisher  
 Extingidor

Primary route  
 Primera ruta  
 Secondary route

6<sup>th</sup> Floor

# QUARTERLY FIRE SUPPRESSION TEST

YEAR      2009

## FEBUARY

<u>FIRE PUMP</u>		<u>PRESSURE</u>		<u>FLOW</u>		<u>SPRINKLERS</u>	
<u>GOOD</u>	<u>BAD</u>	<u>GOOD</u>	<u>BAD</u>	<u>GOOD</u>	<u>BAD</u>	<u>GOOD</u>	<u>BAD</u>
X		X		X		X	

## MAY

<u>FIRE PUMP</u>		<u>PRESSURE</u>		<u>FLOW</u>		<u>SPRINKLERS</u>	
<u>GOOD</u>	<u>BAD</u>	<u>GOOD</u>	<u>BAD</u>	<u>GOOD</u>	<u>BAD</u>	<u>GOOD</u>	<u>BAD</u>
X		X		X		X	

## AUGUST

<u>FIRE PUMP</u>		<u>PRESSURE</u>		<u>FLOW</u>		<u>SPRINKLERS</u>	
<u>GOOD</u>	<u>BAD</u>	<u>GOOD</u>	<u>BAD</u>	<u>GOOD</u>	<u>BAD</u>	<u>GOOD</u>	<u>BAD</u>
X		X		X		X	

## OCTOBER

<u>FIRE PUMP</u>		<u>PRESSURE</u>		<u>FLOW</u>		<u>SPRINKLERS</u>	
<u>GOOD</u>	<u>BAD</u>	<u>GOOD</u>	<u>BAD</u>	<u>GOOD</u>	<u>BAD</u>	<u>GOOD</u>	<u>BAD</u>
X		X		X		X	

10-01-2009

Warden [b6,b7c]

On 09-30-2009 I Lt [b6,b7c] received a message through Business Manager [b6,b7c] from Chief [b6,b7c]. My instructions from Chief [b6,b7c] was to check the toll free number that allows ICE Offenders to contact the DHS Office of the Inspector General. I immediately checked the phone number which went through without any problems.

Lt

[b6,b7c]

Lt

[b6,b7c]

U.S. Department of Homeland Security  
500 12<sup>th</sup> Street, SW  
Washington, DC 20024



## U.S. Immigration and Customs Enforcement

MEMORANDUM FOR: Michael J. Pitts  
Field Office Director  
San Antonio Field Office

OCT 30 2009

FROM:

[REDACTED] b6,b7c  
Acting Unit Chief

SUBJECT: McLennan County Detention Facility Plan of Action

The McLennan County Detention Facility Plan of Action dated October 2, 2009, has been received. The plan was developed in response to a review conducted by Creative Corrections on February 3-5, 2009.

The Review Authority concurs with the Plan of Action and this review is closed. The Field Office must now initiate the following actions in accordance with the Detention Management Control Program (DMCP):

- 1) The Field Office Director, Detention and Removal Operations, shall notify the facility within five business days of receipt of this memorandum. Notification shall include a copy of this memorandum.
- 2) The Field Office Director shall ensure that the facility complies with its proposed Plan of Action and that a follow-up review of the deficiencies identified in the G324A, *Detention Facility Review Form* and the Reviewer-in-Charge Summary Memorandum occurs within 90 days.
- 3) The next annual review will be scheduled on or before February 3, 2010.

Should you or your staff have any questions regarding this matter, please contact [REDACTED] b6,b7c, Detention and Deportation Officer at (202) 732-[REDACTED] b6,b7c

cc: Official File

ICE: HQDRO: [REDACTED] b6,b7c 2-5514: 10/05/2009

[REDACTED] b2High

~~FOR OFFICIAL USE ONLY (LAW ENFORCEMENT SENSITIVE)~~

[www.ice.gov](http://www.ice.gov)



U.S. Immigration  
and Customs  
Enforcement

MAR 30 2009

MEMORANDUM FOR: Michael Pitts  
Field Office Director  
San Antonio Field Office

b6,b7c

FROM:

b6,b7c

Detention Standards Compliance Unit

SUBJECT: McLennan County Detention Facility Annual Review

The annual review of the McLennan County Detention Facility conducted on February 3-5, 2009, in Waco, Texas, has been received. A final rating of Acceptable has been assigned.

The G-324A worksheets provided by the Reviewer-in-Charge (RIC) indicated the facility did not have any deficient standards. However, a Plan of Action is required to address the deficiencies identified in the Detainee Handbook, Detainee Telephone Access, Access to Medical Care, Environmental Health & Safety, and Staff Detainee Communications standards.

The rating was based on the RIC Summary Memorandum and supporting documentation. The Field Office Director must remedy the deficient standards, and initiate the following actions in accordance with the Detention Management Control Program (DMCP):

- 1) The Field Office Director, Detention and Removal Operations, shall notify the facility within five business days of receipt of this memorandum. Notification shall include copies of the Form G-324A Detention Facility Review Form, the G-324A Worksheet, RIC Summary Memorandum, and a copy of this memorandum.
- 2) The Field Office Director is responsible for ensuring that the facility responds to all findings and a Plan of Action is submitted to the Review Authority (RA) within 30 days.
- 3) The RA will advise the Field Office Director once the Plan of Action is approved.
- 4) Once a Plan of Action is approved, the Field Office Director shall schedule a follow-up on the above noted deficiencies within 90 days.

The Field Office is responsible for assisting the Intergovernmental Service Agreement (IGSA) facility to respond to the Immigration and Customs Enforcement findings when assistance is requested. Notification to the facility shall include information that this assistance is available.

Should you or your staff have any questions regarding this matter, please contact [REDACTED] b6,b7c  
Detention and Deportation Officer at (202) 732-[REDACTED] b6,b7c

cc: Official File

ICE:HQDRO: [REDACTED] b6, b7c 2-4526:03/05/09

[REDACTED] b2High



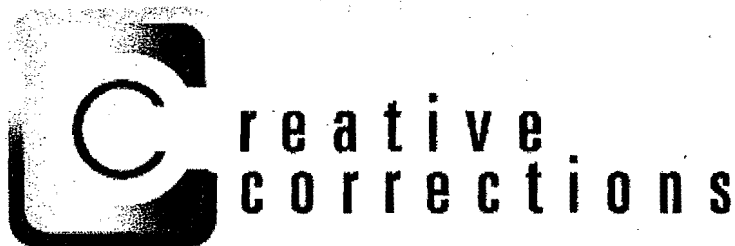
---

# ICE Detention Standards Compliance Review

McLennan County Detention Facility

February 3 - 5, 2009

REPORT DATE – February 10, 2009



Contract Number: ODT-6-D-0001  
Order Number: HSCEOP-07-F-01016

**b6,b7c** Executive Vice President  
Creative Corrections  
6415 Calder, Suite B  
Beaumont, TX 77706

**b6,b7c** COTR  
U.S. Immigration and Customs Enforcement  
Detention Standards Compliance Unit  
500 12th St, SW  
Washington, DC 20536

February 10, 2009

MEMORANDUM FOR: James T. Hayes, Jr., Director  
Office of Detention and Removal OperationsFROM: [REDACTED] b6,b7c [REDACTED] b6,b7c [REDACTED] b6,b7c  
Reviewer-In-Charge SUBJECT: McLennan County Detention Center  
Annual Detention Review (ADR)

Creative Corrections conducted an ADR of the McLennan County Detention Center, operated by Community Education Centers, Inc. (CEC), and located in Waco, Texas, on February 3 - 5, 2009. As noted on the attached documents, the team of Subject Matter Experts included [REDACTED] b6,b7c Security; [REDACTED] b6,b7c, Health Services; [REDACTED] b6,b7c, Environmental Health and Safety; and [REDACTED] b6,b7c, Food Service.

A final closeout was held on Thursday morning, February 5, 2009, with [REDACTED] b6,b7c, CEC, Special Assistant to the Divisional Director; Chief of Security, [REDACTED] b6,b7c; Administrative Lieutenant [REDACTED] b6,b7c and IEAs [REDACTED] b6,b7c and [REDACTED] b6,b7c of the San Antonio, TX, ICE Office, during which all aspects of the review were discussed. Warden [REDACTED] b6,b7c was unable to attend the close out due to a prior commitment in Austin, TX. Warden [REDACTED] b6,b7c was advised of the team's recommendations on Wednesday afternoon, February 4, 2009.

### Type of Review

This review is a scheduled Detention Standard Review to determine general compliance with established ICE National Detention Standards for facilities used for over 72 hours.

### Review Summary

The facility is not accredited by the American Correctional Association, the Joint Commission on Accreditation of Healthcare Organizations, or the National Commission on Correctional Health Care.

### Standards Compliance

The following statistical information provides a direct comparison of the 2008 ADR and this ADR conducted for 2009.

<u>February 2008</u>	<u>Review</u>
Compliant	37
Deficient	0
At-Risk	0
Not-Applicable	1

<u>February 2009</u>	<u>Review</u>
Compliant	36
Deficient	0
At-Risk	0
Not-Applicable	2

### Recommended Rating and Justification

It is my recommendation that the facility receive a rating of "Acceptable." As there were no deficiencies noted above, a Plan of Action should not be required.

### RIC Assurance Statement

All findings of this review have been documented on the Work Sheets and are supported by the written documentation contained in the review file.

**A. Type of Facility Reviewed**

ICE Service Processing Center  
 ICE Contract Detention Facility  
 ICE Intergovernmental Service Agreement

**B. Current Inspection**

Type of Inspection  
 Field Office  HQ Inspection  
Date[s] of Facility Review  
February 3 – 5, 2009

**C. Previous/Most Recent Facility Review**

Date[s] of Last Facility Review  
February 7 – 8, 2008  
Previous Rating  
 Superior  Good  Acceptable  Deficient  At-Risk

**D. Name and Location of Facility**

Name  
McLennan County Detention Facility  
Address (Street and Name)  
520 Columbus Avenue  
City, State and Zip Code  
Waco, Texas 76701  
County  
McLennan  
Name and Title of Chief Executive Officer (Warden/OIC/Supt.)  
b6,b7c  
Telephone # (Include Area Code)  
254-759 b6,b7c  
Field Office / Sub-Office (List Office with oversight responsibilities)  
San Antonio  
Distance from Field Office  
220 miles

**E. ICE Information**

Name of Inspector (Last Name, Title and Duty Station)  
b6,b7c / Reviewer-In-Charge / NM  
Name of Team Member / Title / Duty Location  
b6,b7c SME Security / TX  
Name of Team Member / Title / Duty Location  
b6,b7c SME Environmental Health & Safety / MN  
Name of Team Member / Title / Duty Location  
b6,b7c SME Medical / AL  
Name of Team Member / Title / Duty Location  
b6,b7c / SME Food Service / CO

**F. CDF/IGSA Information Only**

Contract Number  
J-808-99-0014  
Date of Contract or IGSA  
01-01-2001  
Basic Rates per Man-Day  
\$ 41.95  
Other Charges: (If None, Indicate N/A)  
\$ 14.12 – modification 01-01-2006

Estimated Man-days Per Year:  
111,061

**G. Accreditation Certificates**

List all State or National Accreditation[s] received:  
 Check box if facility has no accreditation[s]

**H. Problems / Complaints (Copies must be attached)**

The Facility is under Court Order or Class Action Finding  
 Court Order  Class Action Order  
The Facility has Significant Litigation Pending  
 Major Litigation  Life/Safety Issues  
 Check if None.

**I. Facility History**

Date Built  
1980  
Date Last Remodeled or Upgraded  
N/A  
Date New Construction / Bed space Added  
N/A  
Future Construction Planned  
 Yes  No Date:  
Current Bed space  
329  
Future Bed space (# New Beds only)  
Number: N/A Date:

**J. Total Facility Population**

Total Facility Intake for previous 12 months  
2,194  
Total ICE Man-days for Previous 12 months  
419

**K. Classification Level (ICE SPCs and CDFs Only)**

	L-1	L-2	L-3
Adult Male			
Adult Female			

**L. Facility Capacity**

	Rated	Operational	Emergency
Adult Male	206	206	263
Adult Female	120	120	109
<input type="checkbox"/> Facility holds Juveniles Offenders 16 and older as Adults			

**M. Average Daily Population**

	ICE	USMS	Other
Adult Male	14	117	77
Adult Female	7	66	31

**N. Facility Staffing Level**

Security: b2High Support:

**Significant Incident Summary Worksheet**

For ICE to complete its review of your facility, the following information must be completed prior to the scheduled review dates. The information on this form should contain data for the past twelve months in the boxes provided. The information on this form is used in conjunction with the ICE Detention Standards in assessing your Detention Operations against the needs of the ICE and its detained population. This form should be filled out by the facility prior to the start of any inspection. Failure to complete this section will result in a delay in processing this report and the possible reduction or removal of ICE' detainees at your facility.

<i>Incidents</i>	<i>Description</i>	Jan – Mar	Apr – Jun	Jul – Sept	Oct – Dec
Assault: Offenders on Offenders <sup>1</sup>	Types (Sexual <sup>2</sup> , Physical, etc.)	Physical	Physical	Physical	Physical
	With Weapon	0	0	0	0
	Without Weapon	9	2	8	4
Assault: Detainee on Staff	Types (Sexual Physical, etc.)	0	0	0	0
	With Weapon	0	0	0	0
	Without Weapon	0	0	0	1
Number of Forced Moves, incl. Forced Cell moves <sup>3</sup>		1	1	0	0
Disturbances <sup>4</sup>		0	0	0	0
Number of Times Chemical Agents Used		0	0	0	0
Number of Times Special Reaction Team Deployed/Used		0	0	0	0
# Times Four/Five Point Restraints applied/used	Number/Reason (M=Medical, V=Violent Behavior, O=Other)	0	0	0	0
	Type (C=Chair, B=Bed, BB=Board, O=Other)	0	0	0	0
Offender / Detainee Medical Referrals as a result of injuries sustained.		0	0	0	0
Escapes	Attempted	0	0	0	0
	Actual	0	0	0	0
Grievances:	# Received	26	36	40	74
	# Resolved in favor of Offender/Detainee	10	3	3	6
Deaths	Reason (V=Violent, I=Illness, S=Suicide, A=Attempted Suicide, O=Other)	0	0	0	0
	Number	0	0	0	0
Psychiatric / Medical Referrals	# Medical Cases referred for Outside Care	0	0	0	0
	# Psychiatric Cases referred for Outside Care	0	0	0	0

<sup>1</sup> Any attempted physical contact or physical contact that involves two or more offenders

<sup>2</sup> Oral, anal or vaginal penetration or attempted penetration involving at least 2 parties, whether it is consenting or non-consenting

<sup>3</sup> Routine transportation of detainees/offenders is not considered "forced"

<sup>4</sup> Any incident that involves four or more detainees/offenders, includes gang fights, organized multiple hunger strikes, work stoppages, hostage situations, major fires, or other large scale incidents.

~~FOR OFFICIAL USE ONLY (LAW ENFORCEMENT SENSITIVE)~~



DHS/ICE Detention Standards Review Summary Report						
1. Acceptable 2. Deficient 3. At Risk 4. Repeat Finding 5. Not Applicable						
Legal Access Standards		1.	2.	3.	4.	5.
1.	Access to Legal Materials	<input checked="" type="checkbox"/>	<input type="checkbox"/>	<input type="checkbox"/>	<input type="checkbox"/>	
2.	Group Presentations on Legal Rights	<input checked="" type="checkbox"/>	<input type="checkbox"/>	<input type="checkbox"/>	<input type="checkbox"/>	
3.	Visitation	<input checked="" type="checkbox"/>	<input type="checkbox"/>	<input type="checkbox"/>	<input type="checkbox"/>	
4.	Telephone Access	<input checked="" type="checkbox"/>	<input type="checkbox"/>	<input type="checkbox"/>	<input type="checkbox"/>	
Detainee Services						
5.	Admission and Release	<input checked="" type="checkbox"/>	<input type="checkbox"/>	<input type="checkbox"/>	<input type="checkbox"/>	
6.	Classification System	<input checked="" type="checkbox"/>	<input type="checkbox"/>	<input type="checkbox"/>	<input type="checkbox"/>	
7.	Correspondence and Other Mail	<input checked="" type="checkbox"/>	<input type="checkbox"/>	<input type="checkbox"/>	<input type="checkbox"/>	
8.	Detainee Handbook	<input checked="" type="checkbox"/>	<input type="checkbox"/>	<input type="checkbox"/>	<input type="checkbox"/>	
9.	Food Service	<input checked="" type="checkbox"/>	<input type="checkbox"/>	<input type="checkbox"/>	<input type="checkbox"/>	
10.	Funds and Personal Property	<input checked="" type="checkbox"/>	<input type="checkbox"/>	<input type="checkbox"/>	<input type="checkbox"/>	<input type="checkbox"/>
11.	Detainee Grievance Procedures	<input checked="" type="checkbox"/>	<input type="checkbox"/>	<input type="checkbox"/>	<input type="checkbox"/>	
12.	Issuance and Exchange of Clothing, Bedding, and Towels	<input checked="" type="checkbox"/>	<input type="checkbox"/>	<input type="checkbox"/>	<input type="checkbox"/>	
13.	Marriage Requests	<input checked="" type="checkbox"/>	<input type="checkbox"/>	<input type="checkbox"/>	<input type="checkbox"/>	<input type="checkbox"/>
14.	Non-Medical Emergency Escorted Trip	<input type="checkbox"/>	<input type="checkbox"/>	<input type="checkbox"/>	<input type="checkbox"/>	<input checked="" type="checkbox"/>
15.	Recreation	<input checked="" type="checkbox"/>	<input type="checkbox"/>	<input type="checkbox"/>	<input type="checkbox"/>	
16.	Religious Practices	<input checked="" type="checkbox"/>	<input type="checkbox"/>	<input type="checkbox"/>	<input type="checkbox"/>	
17.	Voluntary Work Program	<input type="checkbox"/>	<input type="checkbox"/>	<input type="checkbox"/>	<input type="checkbox"/>	<input checked="" type="checkbox"/>
Health Services						
18.	Hunger Strikes	<input checked="" type="checkbox"/>	<input type="checkbox"/>	<input type="checkbox"/>	<input type="checkbox"/>	
19.	Medical Care	<input checked="" type="checkbox"/>	<input type="checkbox"/>	<input type="checkbox"/>	<input type="checkbox"/>	
20.	Suicide Prevention and Intervention	<input checked="" type="checkbox"/>	<input type="checkbox"/>	<input type="checkbox"/>	<input type="checkbox"/>	
21.	Terminal Illness, Advanced Directives and Death	<input checked="" type="checkbox"/>	<input type="checkbox"/>	<input type="checkbox"/>	<input type="checkbox"/>	
Security and Control						
22.	Contraband	<input checked="" type="checkbox"/>	<input type="checkbox"/>	<input type="checkbox"/>	<input type="checkbox"/>	
23.	Detention Files	<input checked="" type="checkbox"/>	<input type="checkbox"/>	<input type="checkbox"/>	<input type="checkbox"/>	<input type="checkbox"/>
24.	Disciplinary Policy	<input checked="" type="checkbox"/>	<input type="checkbox"/>	<input type="checkbox"/>	<input type="checkbox"/>	
25.	Emergency Plans	<input checked="" type="checkbox"/>	<input type="checkbox"/>	<input type="checkbox"/>	<input type="checkbox"/>	
26.	Environmental Health and Safety	<input checked="" type="checkbox"/>	<input type="checkbox"/>	<input type="checkbox"/>	<input type="checkbox"/>	
27.	Hold Rooms in Detention Facilities	<input checked="" type="checkbox"/>	<input type="checkbox"/>	<input type="checkbox"/>	<input type="checkbox"/>	
28.	Key and Lock Control	<input checked="" type="checkbox"/>	<input type="checkbox"/>	<input type="checkbox"/>	<input type="checkbox"/>	
29.	Population Counts	<input checked="" type="checkbox"/>	<input type="checkbox"/>	<input type="checkbox"/>	<input type="checkbox"/>	
30.	Post Orders	<input checked="" type="checkbox"/>	<input type="checkbox"/>	<input type="checkbox"/>	<input type="checkbox"/>	
31.	Security Inspections	<input checked="" type="checkbox"/>	<input type="checkbox"/>	<input type="checkbox"/>	<input type="checkbox"/>	
32.	Special Management Units (Administrative Segregation)	<input checked="" type="checkbox"/>	<input type="checkbox"/>	<input type="checkbox"/>	<input type="checkbox"/>	
33.	Special Management Units (Disciplinary Segregation)	<input checked="" type="checkbox"/>	<input type="checkbox"/>	<input type="checkbox"/>	<input type="checkbox"/>	
34.	Tool Control	<input checked="" type="checkbox"/>	<input type="checkbox"/>	<input type="checkbox"/>	<input type="checkbox"/>	
35.	Transportation (Land management)	<input checked="" type="checkbox"/>	<input type="checkbox"/>	<input type="checkbox"/>	<input type="checkbox"/>	<input type="checkbox"/>
36.	Use of Force	<input checked="" type="checkbox"/>	<input type="checkbox"/>	<input type="checkbox"/>	<input type="checkbox"/>	
37.	Staff / Detainee Communication (Added August 2003)	<input checked="" type="checkbox"/>	<input type="checkbox"/>	<input type="checkbox"/>	<input type="checkbox"/>	
38.	Detainee Transfer (Added September 2004)	<input checked="" type="checkbox"/>	<input type="checkbox"/>	<input type="checkbox"/>	<input type="checkbox"/>	

All findings (Deficient and At-Risk) require written comment describing the finding and what is necessary to meet compliance.

~~FOR OFFICIAL USE ONLY (LAW ENFORCEMENT SENSITIVE)~~

**RIC Review Assurance Statement**

By signing below, the Reviewer-In-Charge (RIC) certifies that all findings of noncompliance with policy or inadequate controls contained in the Inspection Report are supported by evidence that is sufficient and reliable. Furthermore, findings of noteworthy accomplishments are supported by sufficient and reliable evidence. Within the scope of the review, the facility is operating in accordance with applicable law and policy, and property and resources are efficiently used and adequately safeguarded, except for the deficiencies noted in the report.

Reviewer-In-Charge: (Print Name) [REDACTED] Reviewer-In-Charge, NM	Signature [REDACTED] [REDACTED]
Title & Duty Location	Date February 7, 2009

Team Members	
Print Name, Title, & Duty Location [REDACTED] SME Security, TX	Print Name, Title, & Duty Location [REDACTED] SME Medical, AL
Print Name, Title, & Duty Location [REDACTED] SME Food Service, CO	Print Name, Title, & Duty Location [REDACTED] SME Environmental Health and Safety, MN

**Recommended Rating:**

- Superior
- Good
- Acceptable
- Deficient
- At-Risk

Comments: The facility does not use Tasers or canines.

The facility is managed by Warden [REDACTED], who is retired from the state of Texas Department of Corrections with extensive experience as warden of several Texas state correctional institutions. He has been with CEC more than four years at this private correctional facility, and he is a visible figure in the facility.

The facility staff was cooperative, informative, and provided thoughtful and competent responses to review requests. Administrative Lieutenant [REDACTED] was of particular assistance to the entire review team. Classification Officer [REDACTED] was noted as a particularly efficient officer. Chief of Security [REDACTED] was also of significant help during the review.

The facility corrected several items during the review in a responsible and expeditious manner. Although this is an older facility, it was orderly and presentable.

---

## HEADQUARTERS EXECUTIVE REVIEW

---

### Review Authority

The signature below constitutes review of this report and acceptance by the Review Authority. **OIC/CEO will have 30 days from receipt of this report to respond to all findings and recommendations.**

HQDRO EXECUTIVE REVIEW: (Please Print Name) b6,b7c	Signature b6,b7c
Title Chief, Detention Standards Compliance Unit	Date b6,b7c 2/29, 2009

- Final Rating:
- Superior
  - Good
  - Acceptable
  - Deficient
  - At-Risk
  - No Rating

Comments: The Review Authority concurs with the recommended rating of "Acceptable." A plan of action is required to address the line item deficiencies identified in the Detainee Handbook, Detainee Telephone Access, Access to Medical Care, Environmental Health & Safety, and Staff Detainee Communication standards.



**HEADQUARTERS EXECUTIVE REVIEW**

**Review Authority**

The signature below constitutes review of this report and acceptance by the Review Authority. OIC/CEO will have 30 days from receipt of this report to respond to all findings and recommendations.

HQDRO EXECUTIVE REVIEW: (Please Print Name)	
James T. Hayes, Jr.	b6,b7c
Title	Date
Director	6/26/07

- Final Rating:
- Acceptable
  - Deficient
  - At-Risk
  - No Rating

Comments: The Review Authority has downgraded the recommended rating of "Acceptable" to "Deficient" due to the use of EMDDs (Elector Muscular Disruption Devices). No plan of action is required in regard to the use of EMDDs. A plan of action is required to address the line item deficiencies identified in the Environmental Health and Safety, Special Management Units (Administrative and Disciplinary), Access to Telephones and Use of Force standards.