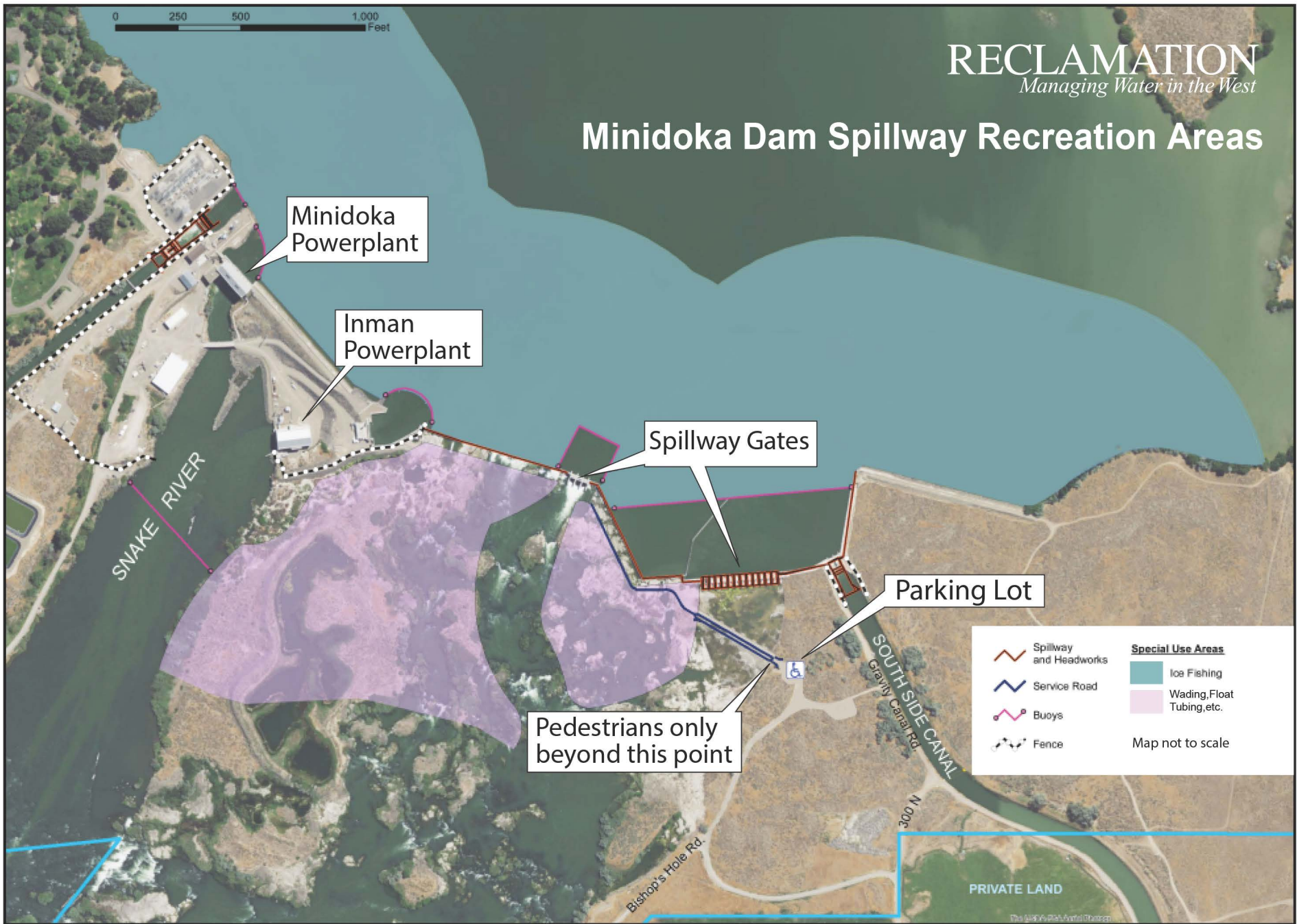


# Minidoka Dam Spillway Recreation Areas



## For Your Safety

**Watch Your Footing:** Surfaces can be slippery, especially around the spillway.

**Ice Fish Safely:** Ice fishing is allowed near the dam facilities, with the exception of areas between buoy lines, dam, and spillway. Be aware that the ice near these buoy lines and the dam is much thinner than on the main body of the reservoir.

**Watch the Flows:** Move to higher ground when the sirens warn of opening spillway gates.

**Recreate Safely Near the Dam** - Within 300 yards of the dam, recreate in or on the water only in the marked special use areas.