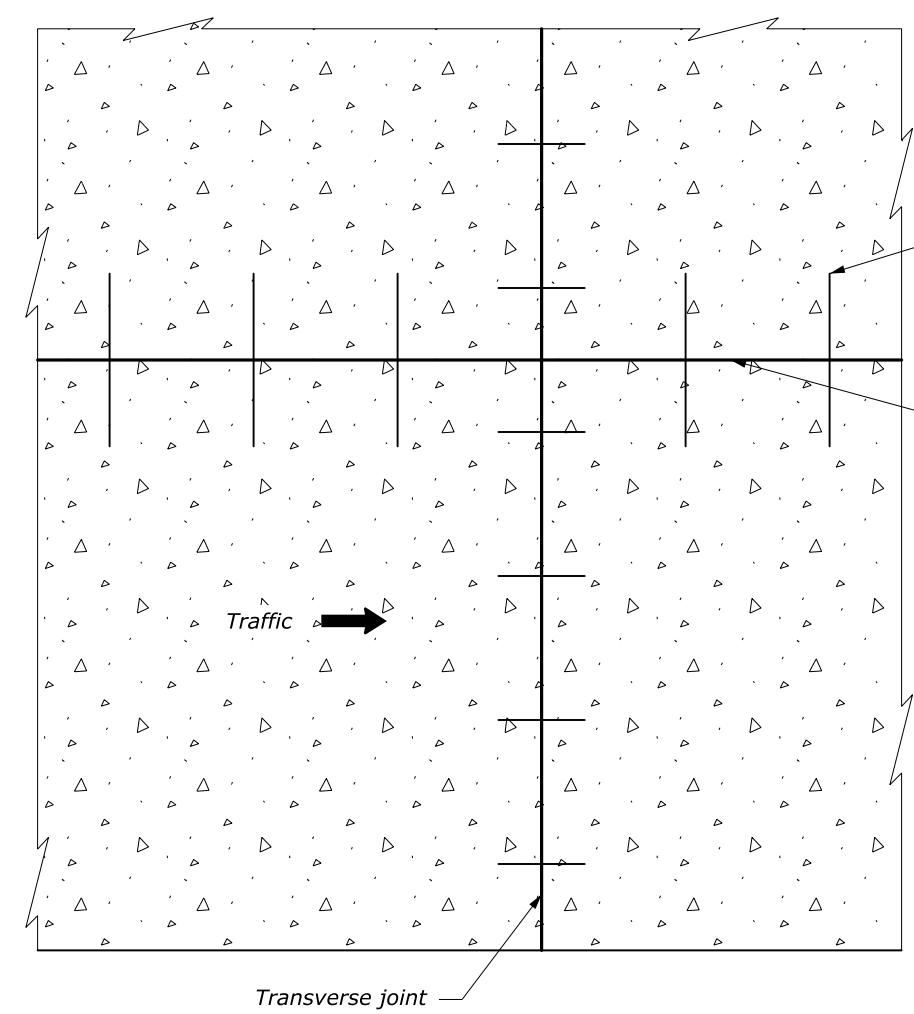
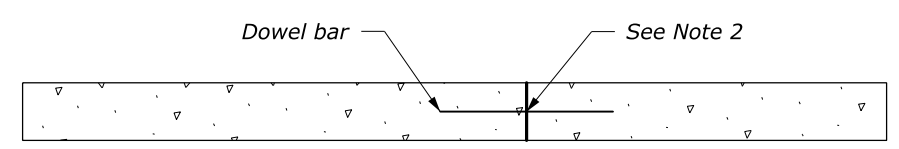


NOTE:

1. Provide the same type of dowel assemblies and tie bars for joints in plain portland cement concrete pavement as shown for joints in reinforced pavement.
2. See Standard M501-2 for joint and joint sealing details.
3. Lap longitudinal and transverse reinforcement not less than 380 mm.
4. Dimensions without units are millimeters.



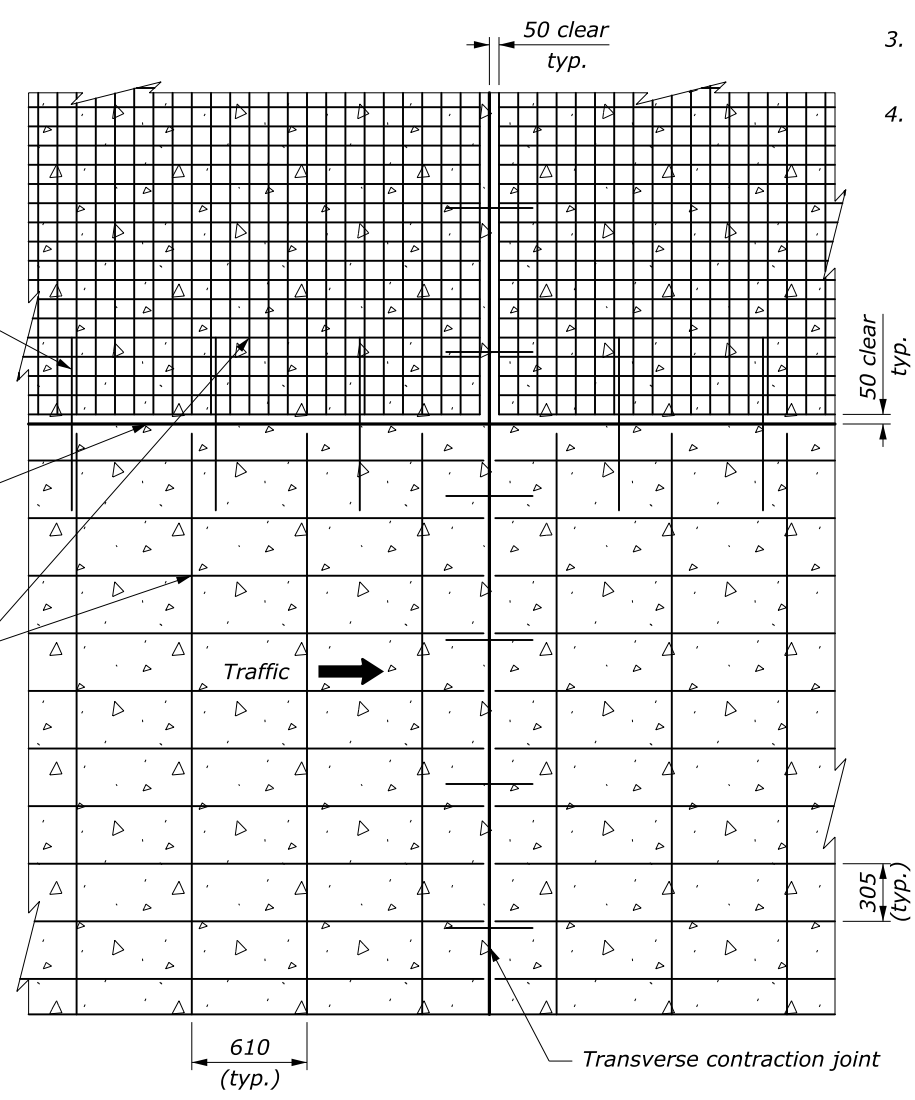
PLAN



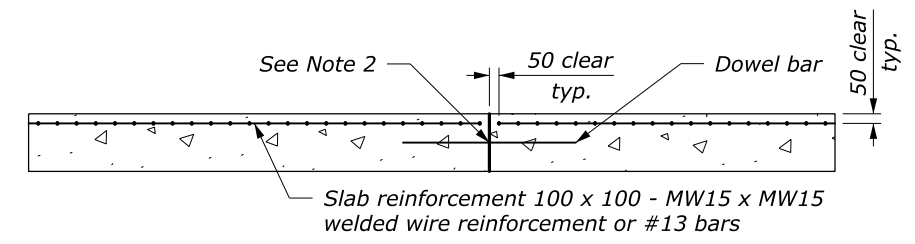
PROFILE

PLAIN MINOR CONCRETE PAVEMENT

Tie bar
Longitudinal joint
Slab reinforcement 100 x 100 - MW15 x MW15 welded wire reinforcement or #13 bars



PLAN



PROFILE

REINFORCED MINOR CONCRETE PAVEMENT

PAVEMENT THICKNESS (mm)	TRANSVERSE JOINT SPACING (m)
$T < 150$	3
$150 \leq T < 300$	4.5

U.S. DEPARTMENT OF TRANSPORTATION
FEDERAL HIGHWAY ADMINISTRATION
FEDERAL LANDS HIGHWAY
METRIC STANDARD

MINOR CONCRETE PAVEMENT

STANDARD APPROVED FOR USE 3/1996
REVISED: 6/1997
DRAFT: 9/2016

STANDARD M501-1

NO SCALE