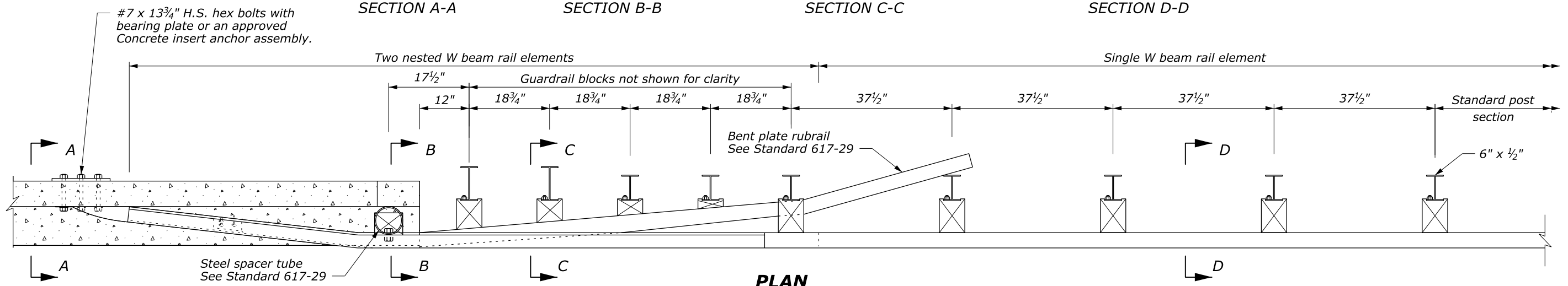


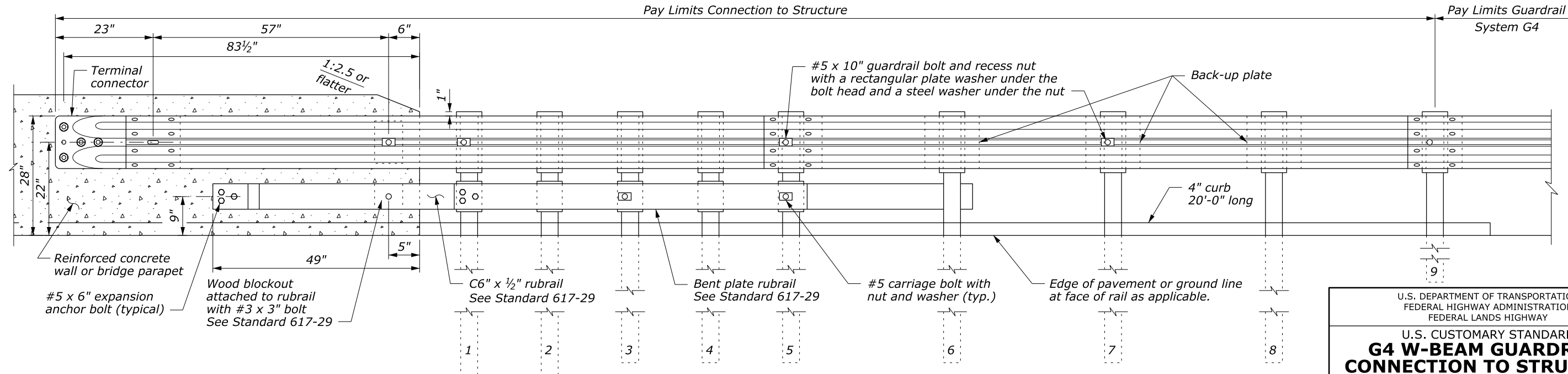
- NOTE:**
1. Posts 1 through 5 require an additional hole to attach lower wood blocks and/or rubrail.
  2. Offset drill wood blocks for rubrail to sit squarely on the post flange on posts 1 through 4. Secure blocks to posts 2 and 4. Secure rubrail and blocks to post flange on posts 1, 3, and 5 using #5 carriage bolts.
  3. Do not bolt W beam to posts and blocks at posts 2 and 4.
  4. Reinforced concrete wall or bridge parapet must be capable of developing a 59.6 kip pull out strength.

**BEARING PLATE**

SECTION A-A      SECTION B-B      SECTION C-C      SECTION D-D



**PLAN**



**ELEVATION**

U.S. DEPARTMENT OF TRANSPORTATION  
FEDERAL HIGHWAY ADMINISTRATION  
FEDERAL LANDS HIGHWAY

U.S. CUSTOMARY STANDARD  
**G4 W-BEAM GUARDRAIL  
CONNECTION TO STRUCTURE  
SAFETY SHAPE FACE  
STEEL POSTS**

STANDARD APPROVED FOR USE --/--

REVIS: 9/2013

STANDARD  
617-28

NO SCALE

30 September 2013 10:59 AM c:\myfiles\pw\_production\dm67487\Standard\_617-28.DRAFT.dgn [USC]