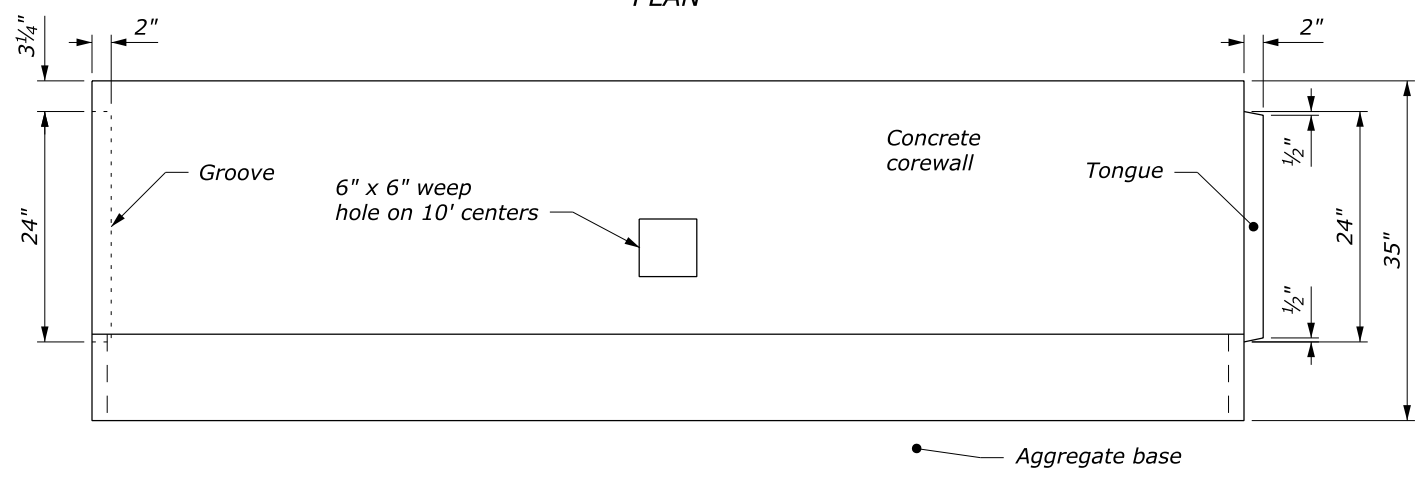
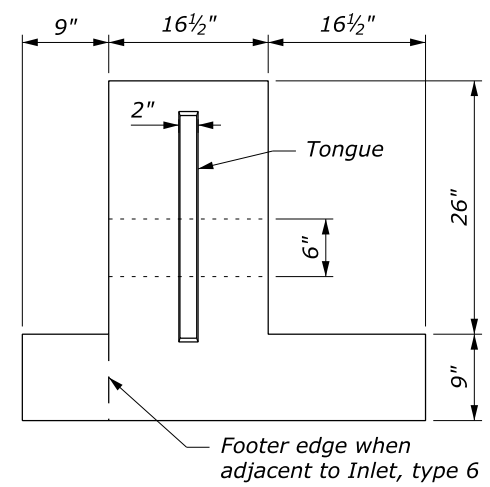


PLAN



ELEVATION

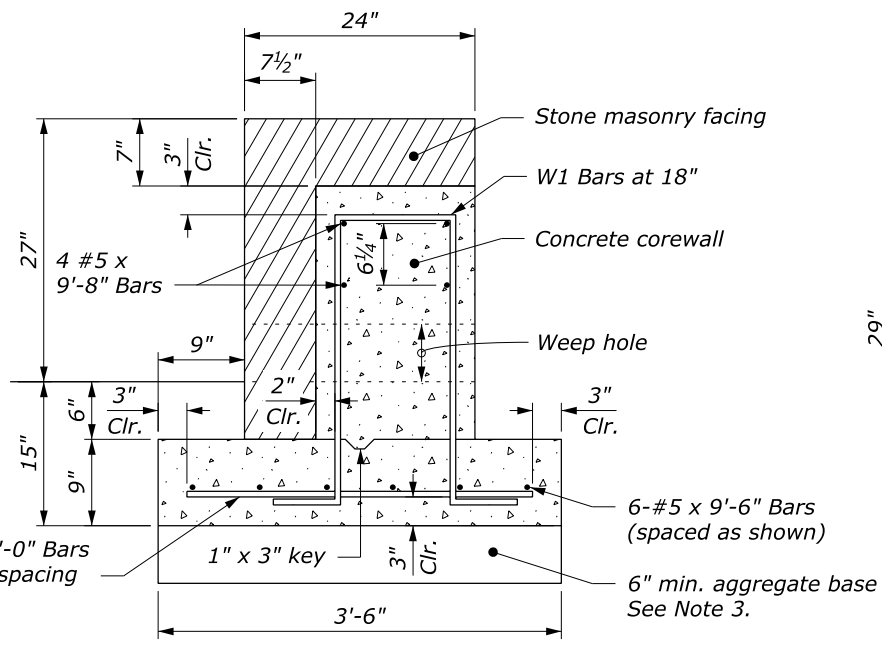
PRECAST CONCRETE COREWALL



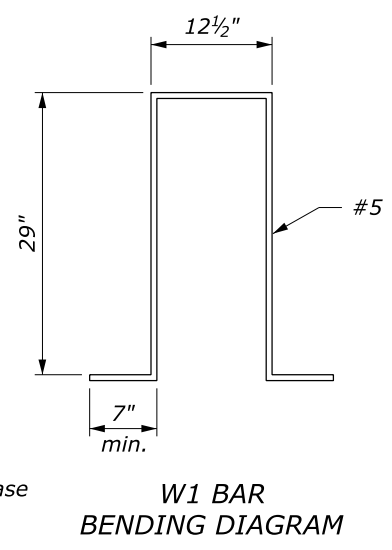
END VIEW

NOTE:

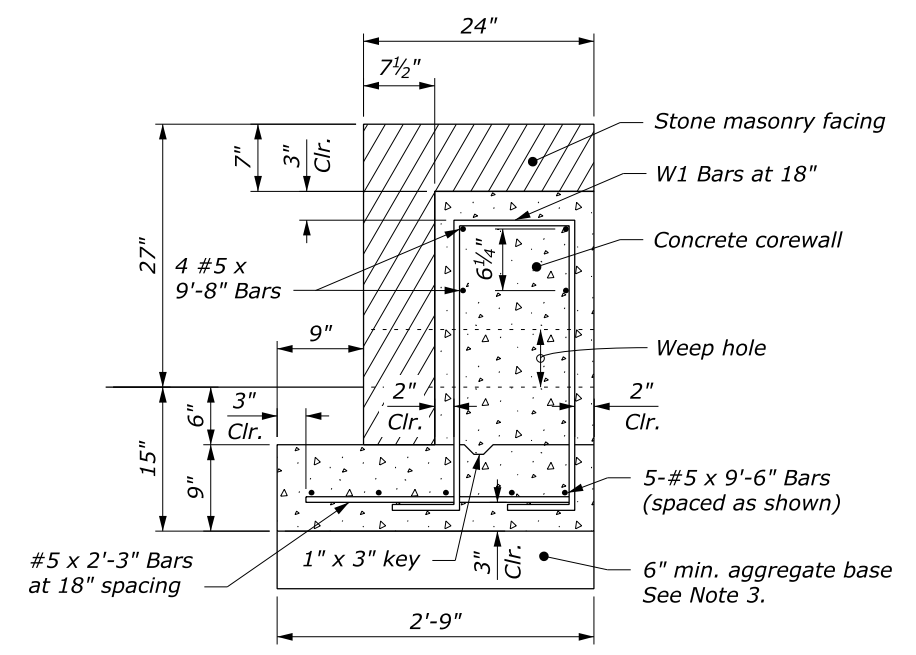
1. Form construction joints in the corewall at 30-foot intervals or at the option of the Contractor, construct the corewall of precast concrete units.
2. Use cast-in-place corewall on curves with radius less than 150 feet.
3. Depth of base may be less than 6" as directed by the CO, when the foundation is on either rock fill or solid rock.
4. See Typical Section for guardwall offset distance and pavement structure.
5. Set galvanized metal slots with anchors for the stone work or other approved type of metal anchors in the concrete. Equivalent attachment systems are allowed with the approval of the CO.



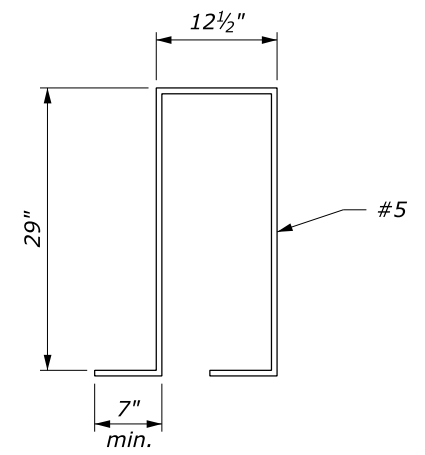
TYPICAL GUARDWALL CROSS SECTION (SINGLE FACE ADJACENT TO CUT SLOPE)



W1 BAR BENDING DIAGRAM



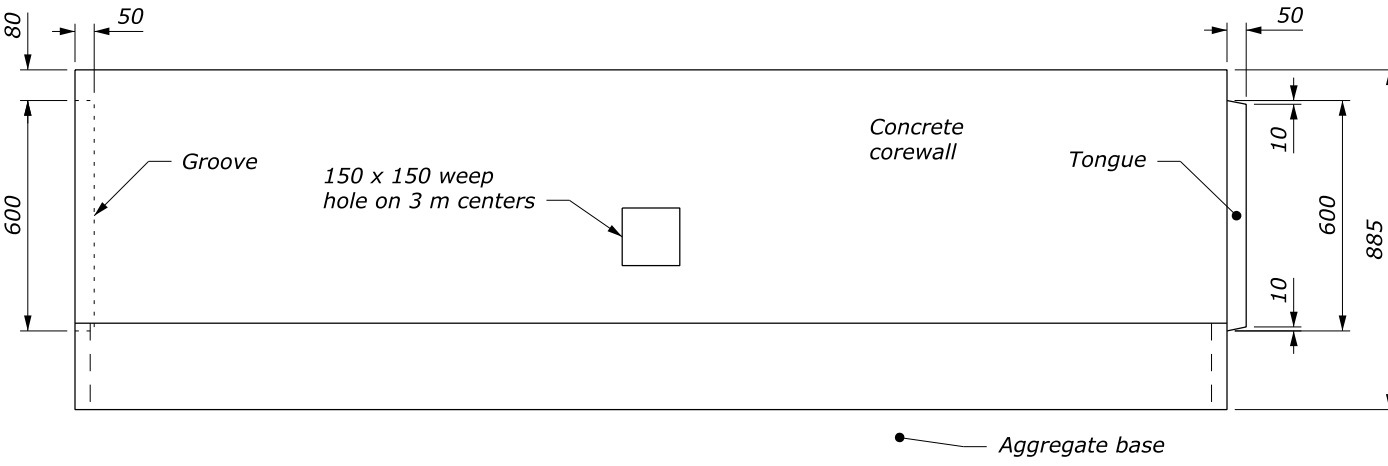
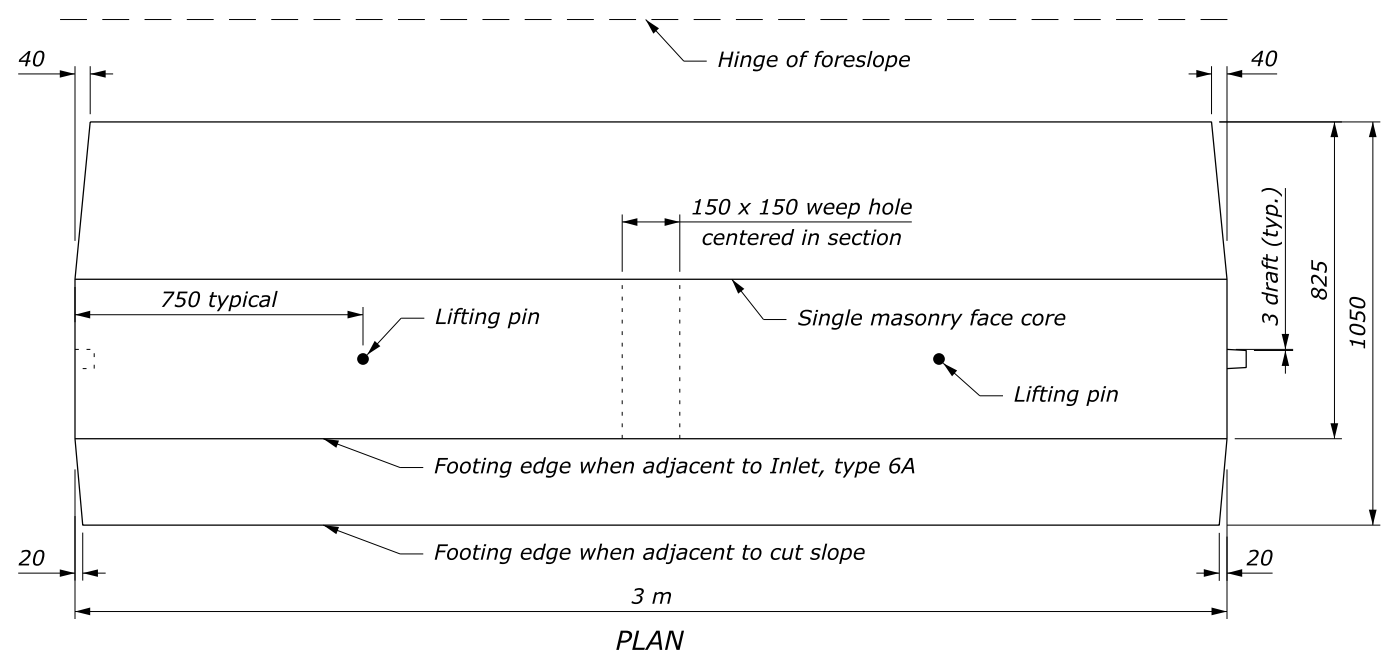
TYPICAL GUARDWALL CROSS SECTION (SINGLE FACE ADJACENT TO INLET, TYPE 6A)



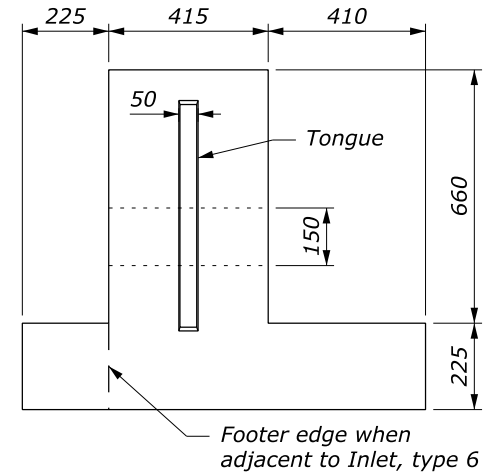
W1 BAR BENDING DIAGRAM

| | |
|--|----------|
| U.S. DEPARTMENT OF TRANSPORTATION FEDERAL HIGHWAY ADMINISTRATION FEDERAL LANDS HIGHWAY | |
| U.S. CUSTOMARY STANDARD | |
| STONE MASONRY GUARDWALL (SINGLE FACE) | |
| STANDARD APPROVED FOR USE 6/2005 | STANDARD |
| REVISED: | 620-1 |

NO SCALE



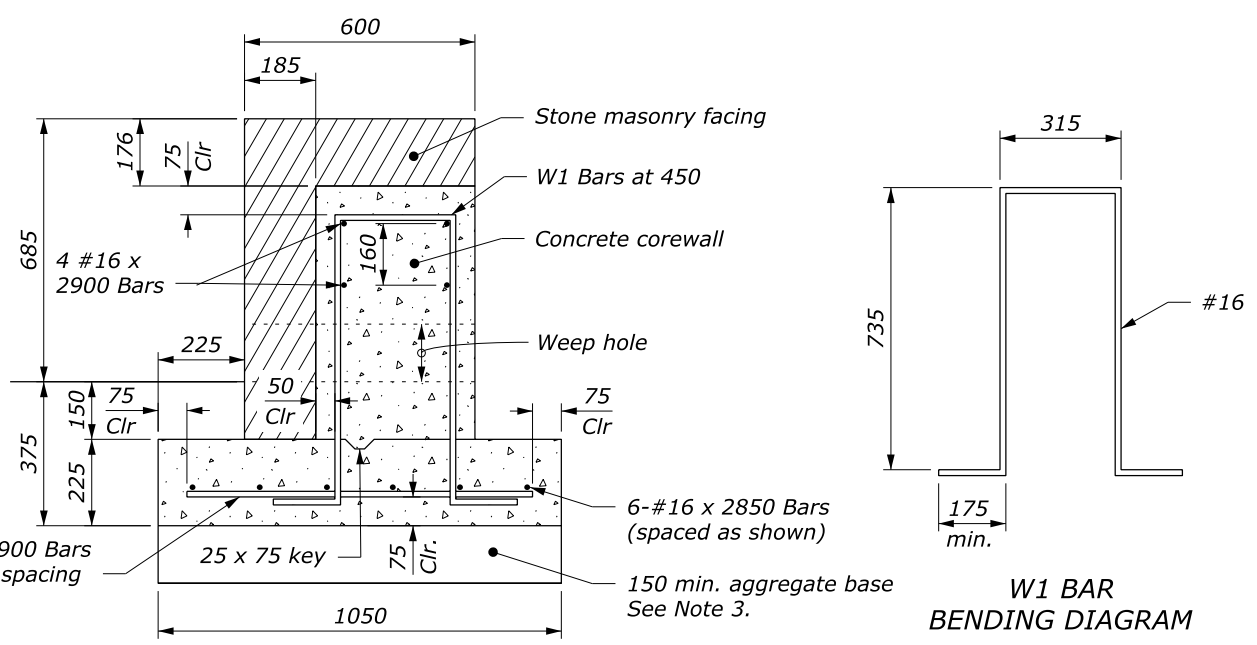
PRECAST CONCRETE COREWALL



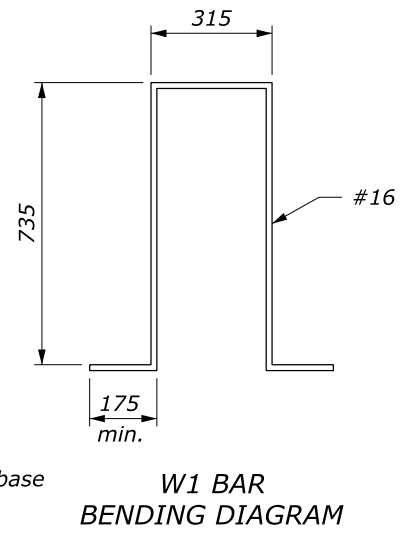
END VIEW

NOTE:

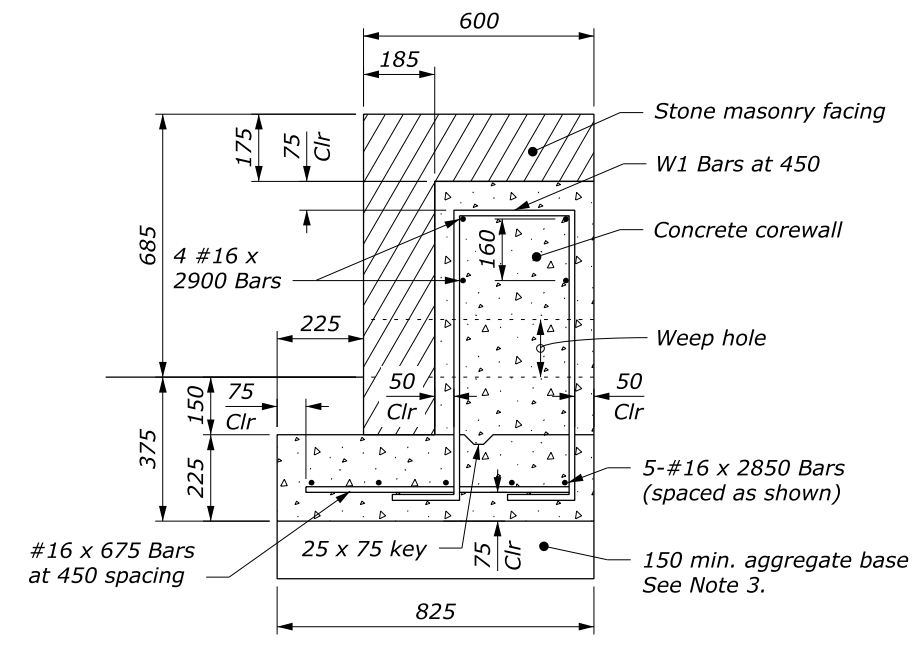
1. Form construction joints in the corewall at 9 m intervals or at the option of the Contractor, construct the corewall of precast concrete units.
2. Use cast-in-place corewall on curves with radius less than 50 m.
3. Depth of base may be less than 150 mm as directed by the CO, when the foundation is on either rock fill or solid rock.
4. See Typical Section for guardwall offset distance and pavement structure.
5. Set galvanized metal slots with anchors for the stone work or other approved type of metal anchors in the concrete. Equivalent attachment systems are allowed with the approval of the CO.
6. Dimensions without units are millimeters.



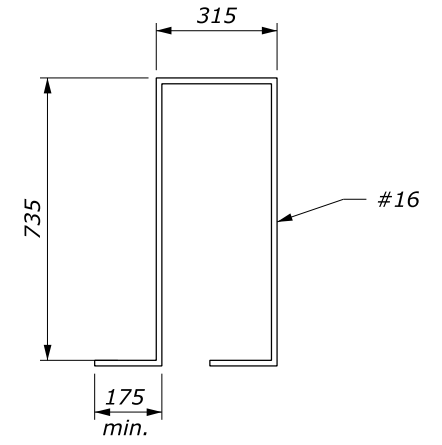
TYPICAL GUARDWALL CROSS SECTION (SINGLE FACE ADJACENT TO CUT SLOPE)



W1 BAR BENDING DIAGRAM



TYPICAL GUARDWALL CROSS SECTION (SINGLE FACE ADJACENT TO INLET, TYPE 6A)

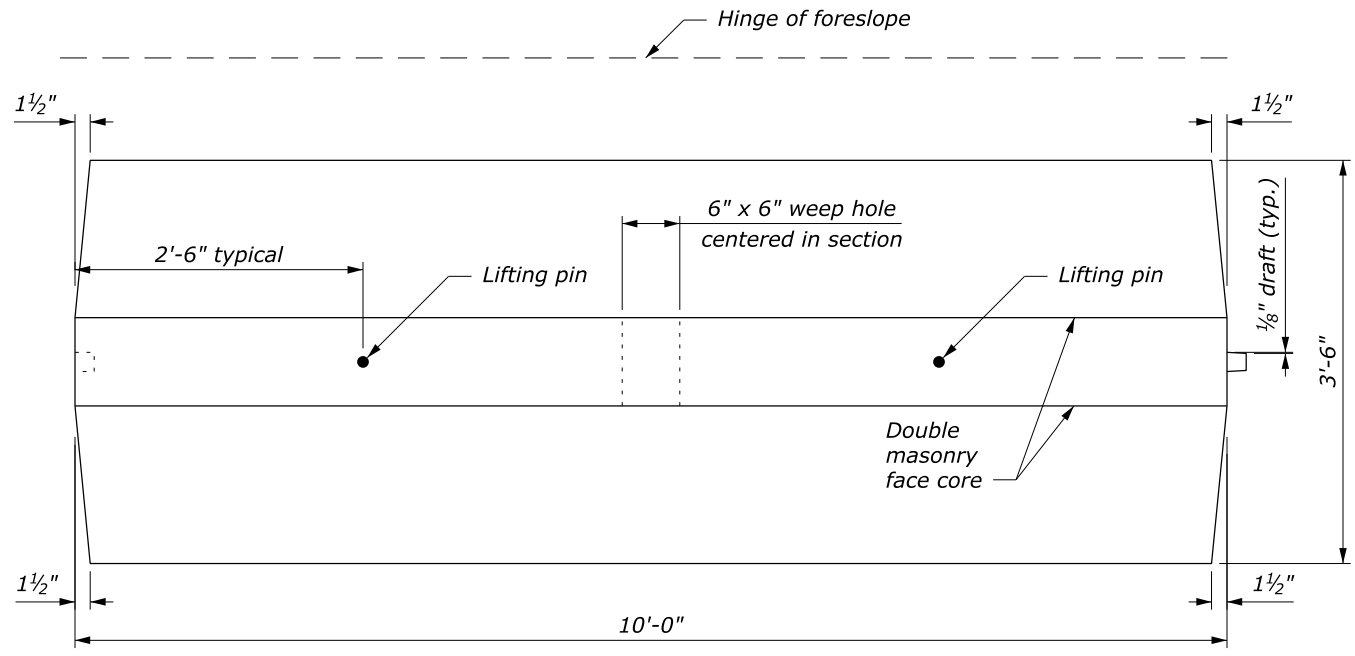


W1 BAR BENDING DIAGRAM

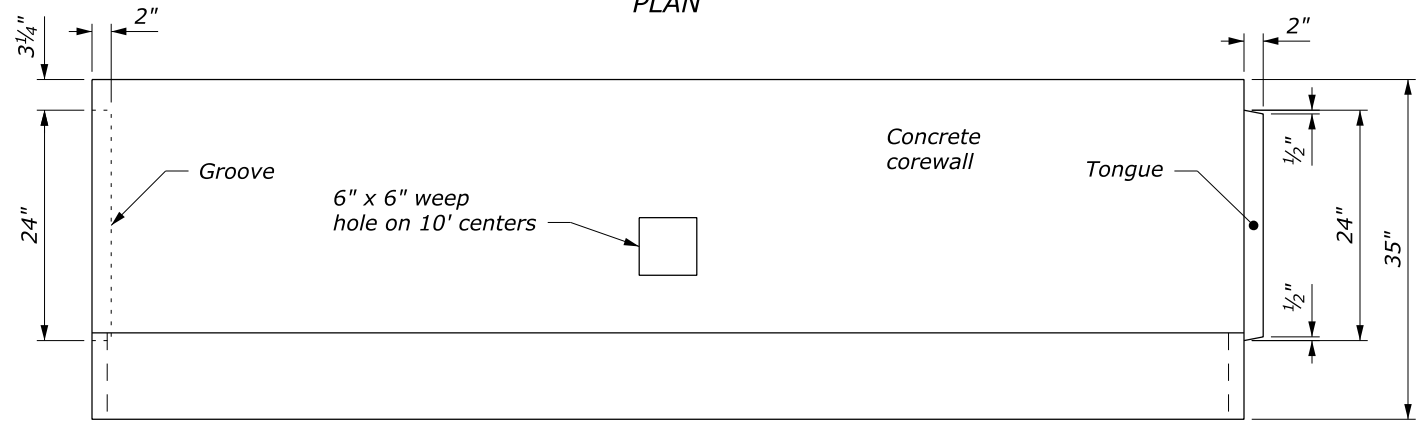
| | |
|--|-----------------|
| U.S. DEPARTMENT OF TRANSPORTATION FEDERAL HIGHWAY ADMINISTRATION FEDERAL LANDS HIGHWAY | |
| METRIC STANDARD | |
| STONE MASONRY GUARDWALL (SINGLE FACE) | |
| STANDARD APPROVED FOR USE 6/2005 | STANDARD M620-1 |
| REVISED: | |

NO SCALE

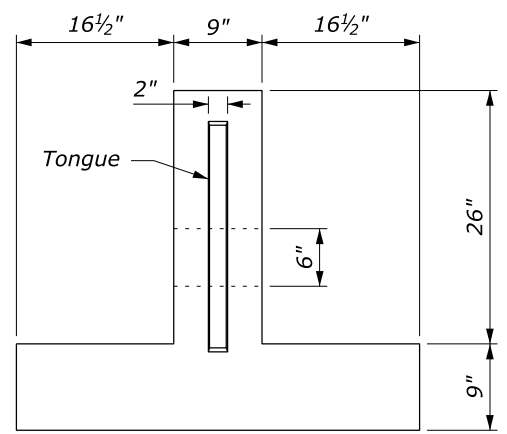
c:\myfiles\pw_production\dms67489\Std620-1.dgn [Metric] 24 August 2015 2:23 PM



PLAN

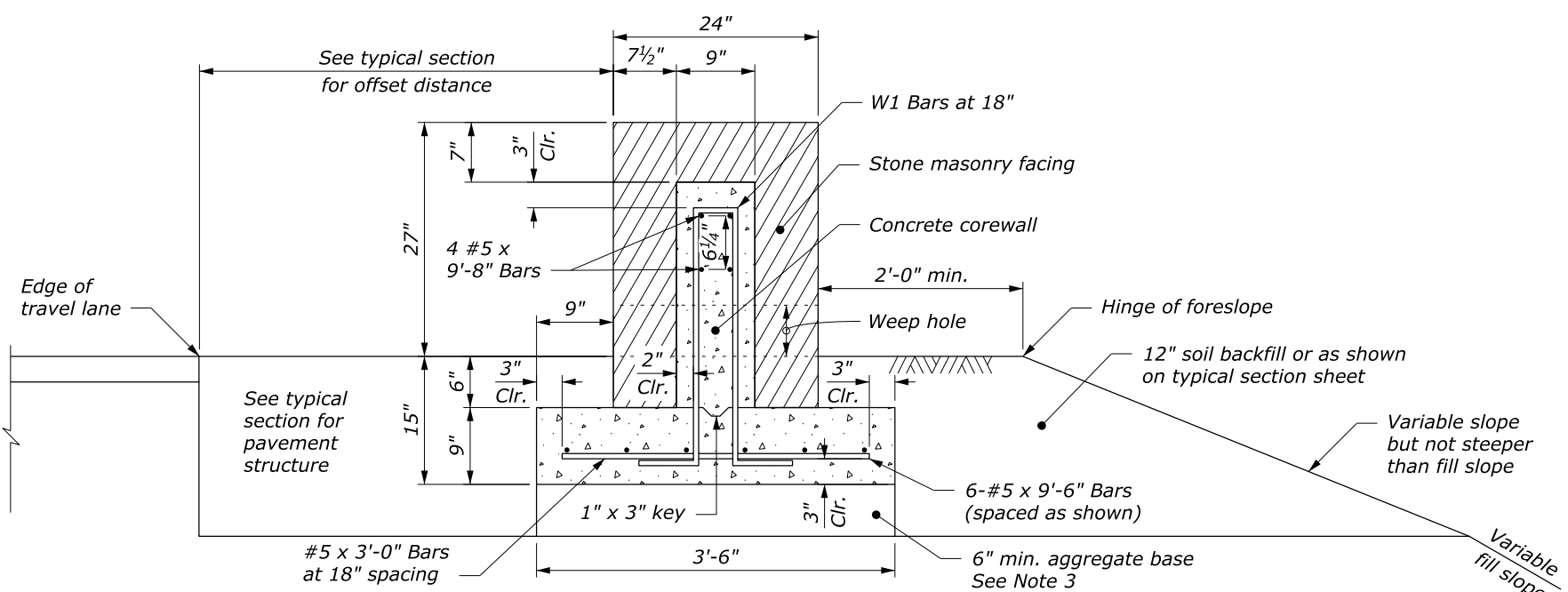


ELEVATION

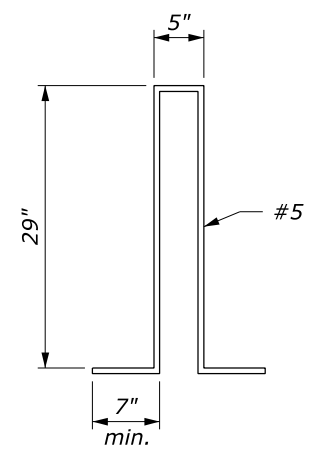


END VIEW

PRECAST CONCRETE COREWALL



TYPICAL GUARDWALL CROSS SECTION (DOUBLE FACE)



W1 BAR BENDING DIAGRAM

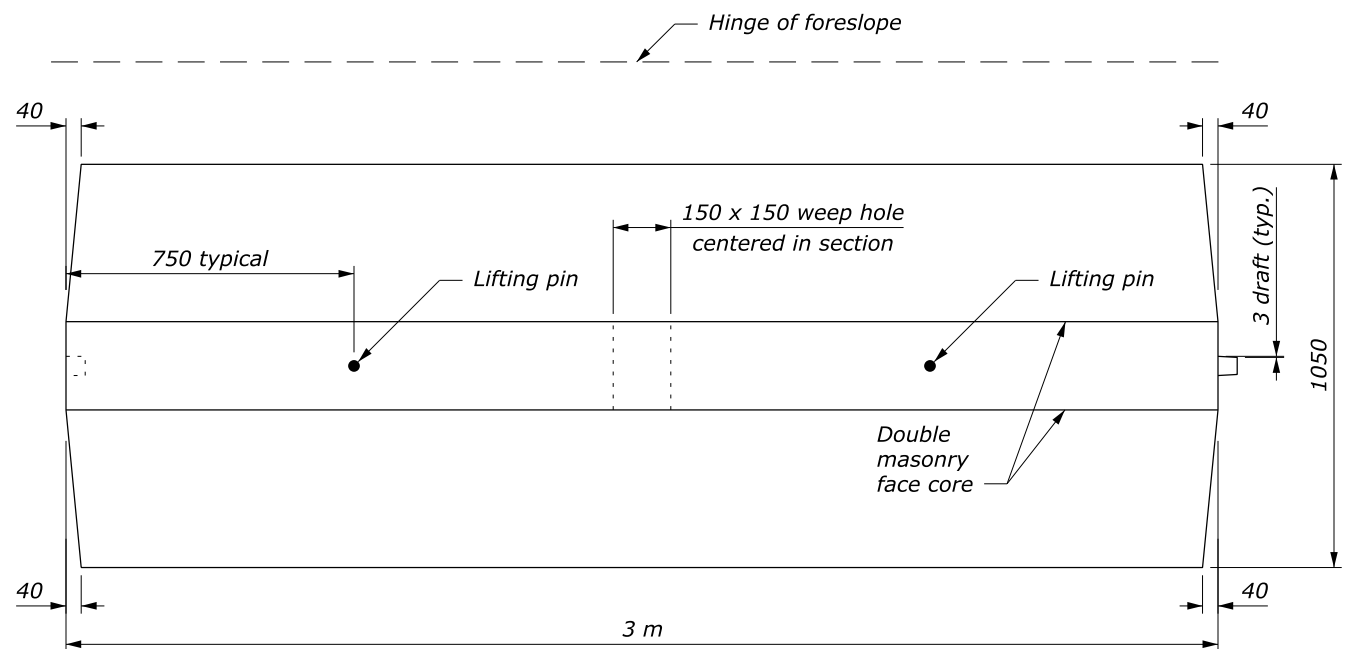
NOTE:

1. Form construction joints in the corewall at 30-foot intervals or at the option of the Contractor, construct the corewall of precast concrete units.
2. Use cast-in-place corewall on curves with radius less than 150 feet.
3. Depth of base may be less than 6" as directed by the CO, when the foundation is on either rock fill or solid rock.
4. Set galvanized metal slots with anchors for the stone work or other approved type of metal anchors in the concrete. Equivalent attachment systems are allowed with the approval of the CO.

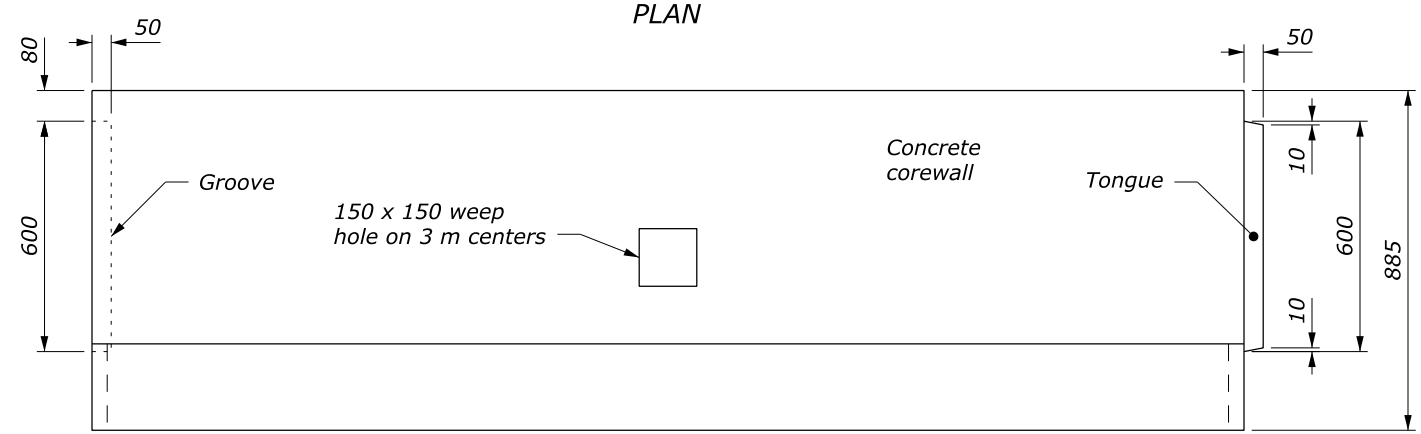
NO SCALE

| | |
|--|-------------------|
| U.S. DEPARTMENT OF TRANSPORTATION FEDERAL HIGHWAY ADMINISTRATION FEDERAL LANDS HIGHWAY | |
| U.S. CUSTOMARY STANDARD | |
| STONE MASONRY GUARDWALL (DOUBLE FACE) | |
| STANDARD APPROVED FOR USE 3/1990 REVISED: 4/1994 6/2005 | STANDARD 620-2 |

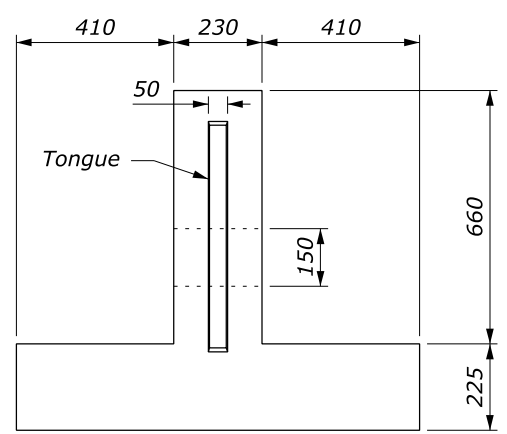
24 August 2015 1:55 PM c:\myfiles\pw_production\dms67489\std620-2.dgn [USC]



PLAN

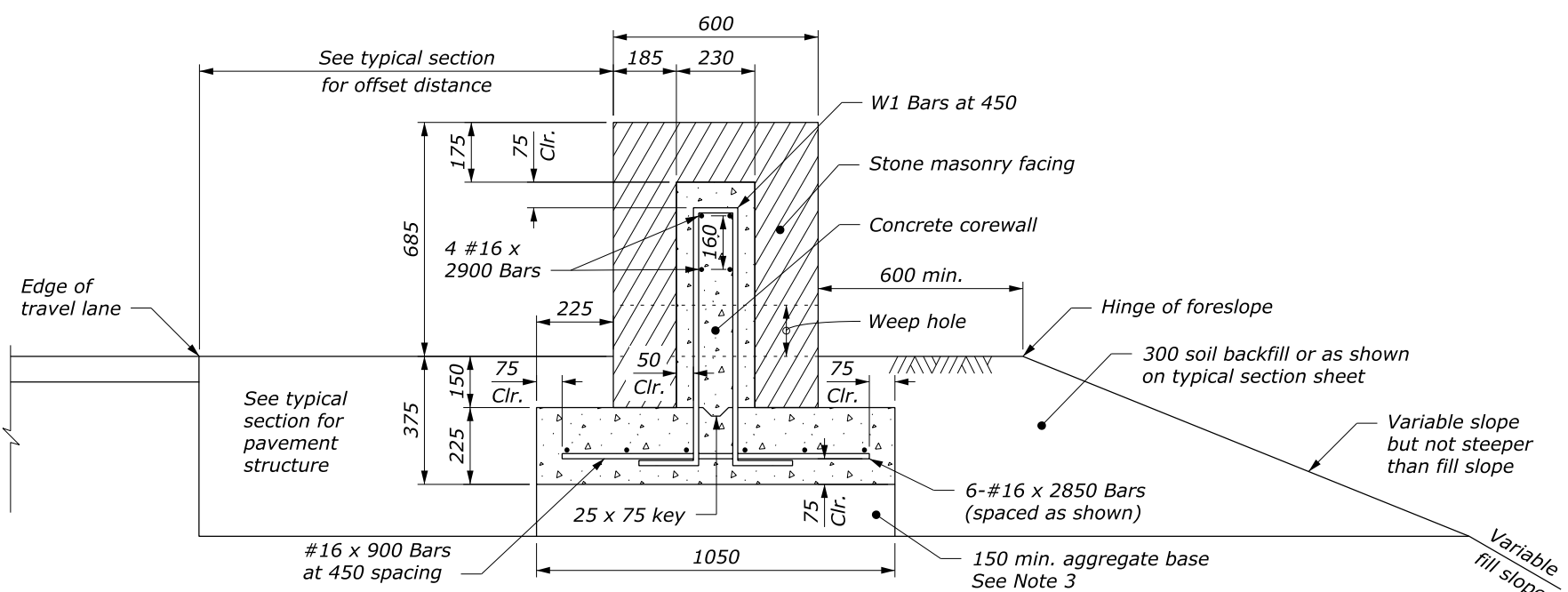


ELEVATION

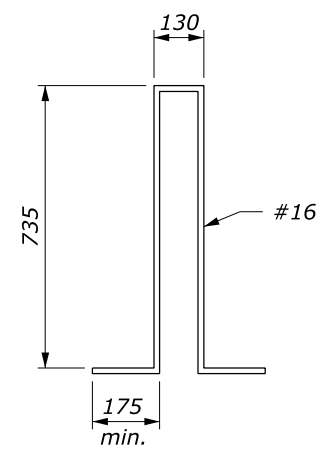


END VIEW

PRECAST CONCRETE COREWALL



TYPICAL GUARDWALL CROSS SECTION (DOUBLE FACE)



W1 BAR BENDING DIAGRAM

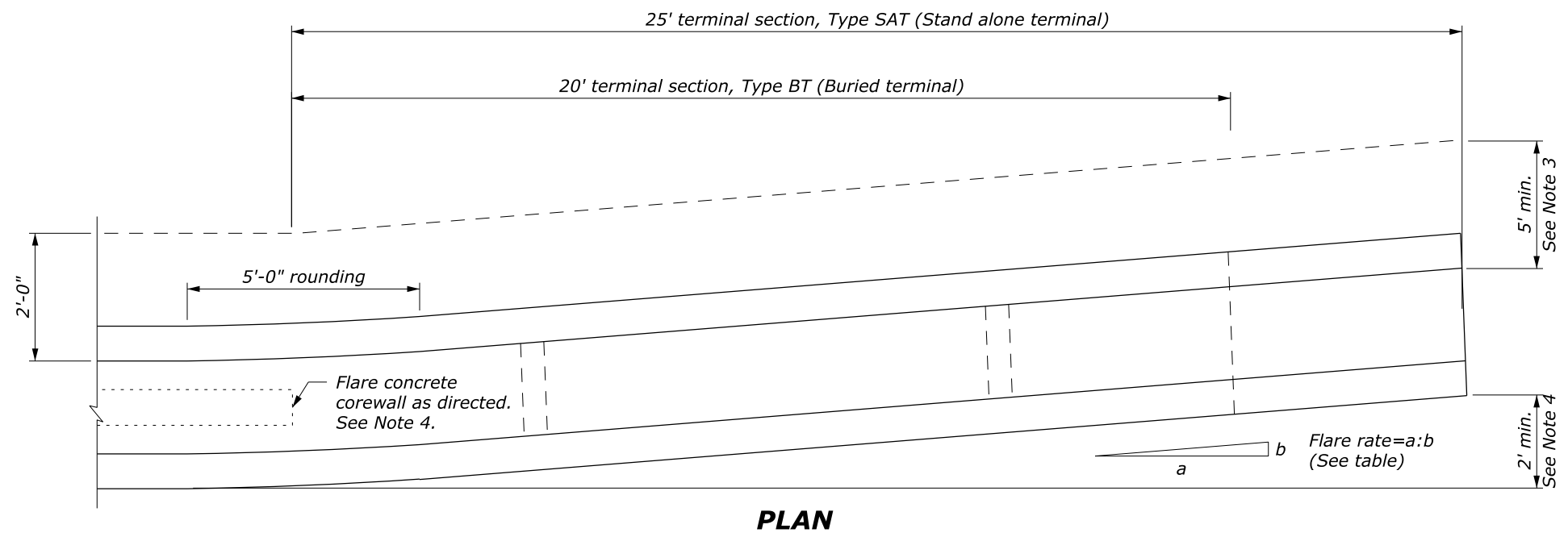
NOTE:

1. Form construction joints in the corewall at 9 m intervals or at the option of the Contractor, construct the corewall of precast concrete units.
2. Use cast-in-place corewall on curves with radius less than 50 m.
3. Depth of base may be less than 150 mm as directed by the CO, when the foundation is on either rock fill or solid rock.
4. Set galvanized metal slots with anchors for the stone work or other approved type of metal anchors in the concrete. Equivalent attachment systems are allowed with the approval of the CO.
5. Dimensions without units are millimeters

| | |
|--|----------|
| U.S. DEPARTMENT OF TRANSPORTATION FEDERAL HIGHWAY ADMINISTRATION FEDERAL LANDS HIGHWAY | |
| METRIC STANDARD | |
| STONE MASONRY GUARDWALL (DOUBLE FACE) | |
| STANDARD APPROVED FOR USE 3/1996 | STANDARD |
| REVISED: 5/1997 6/2005 | M620-2 |

NO SCALE

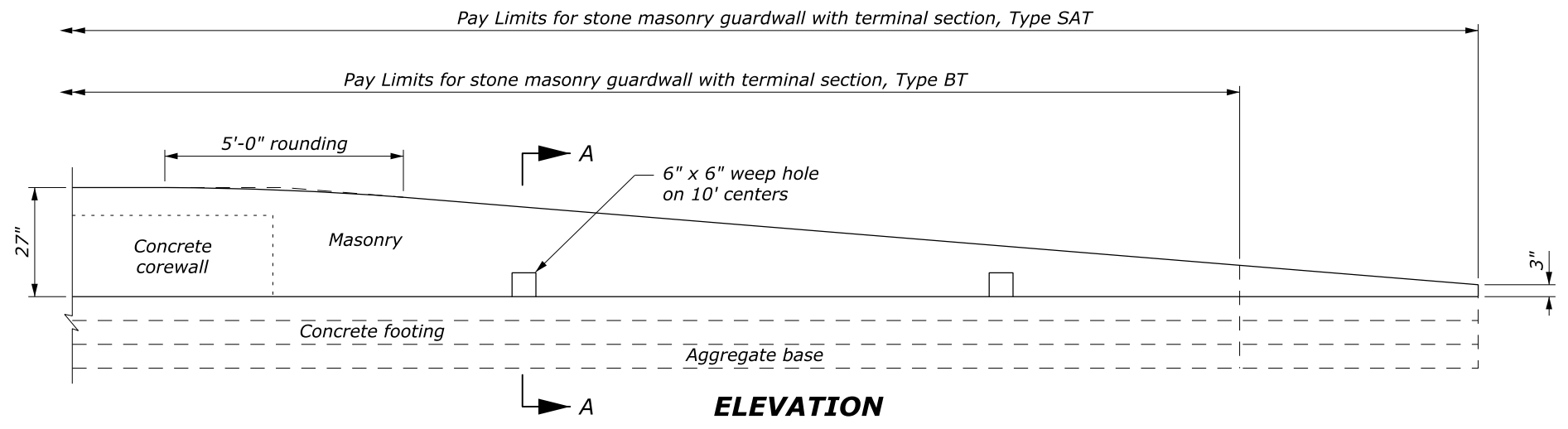
24 August 2015 1:55 PM c:\myfiles\pw_production\dms67489\Std620-2.dgn [Metric]



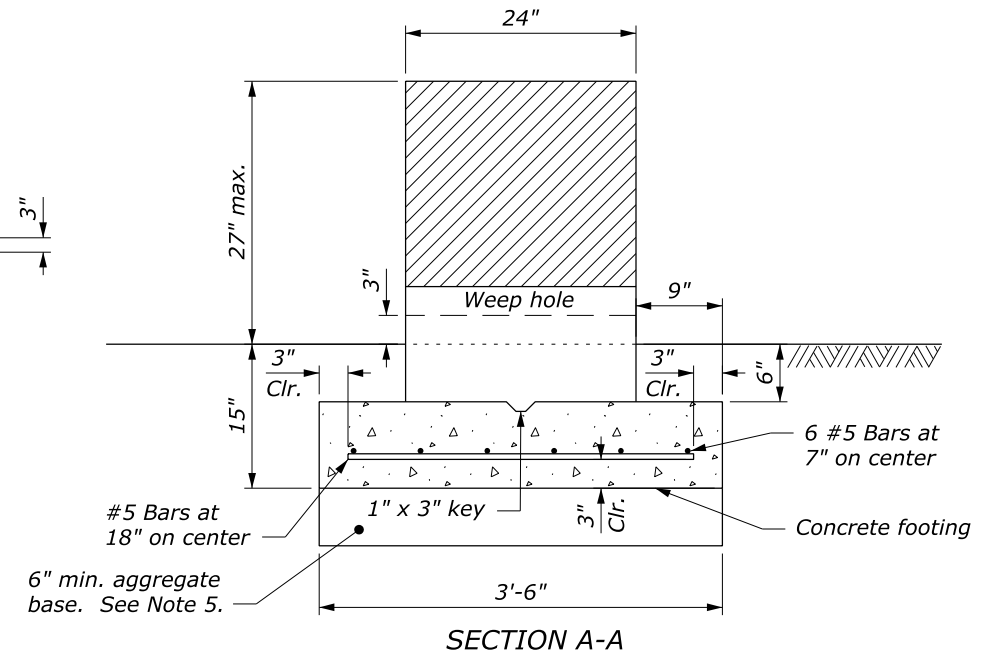
PLAN

NOTE:

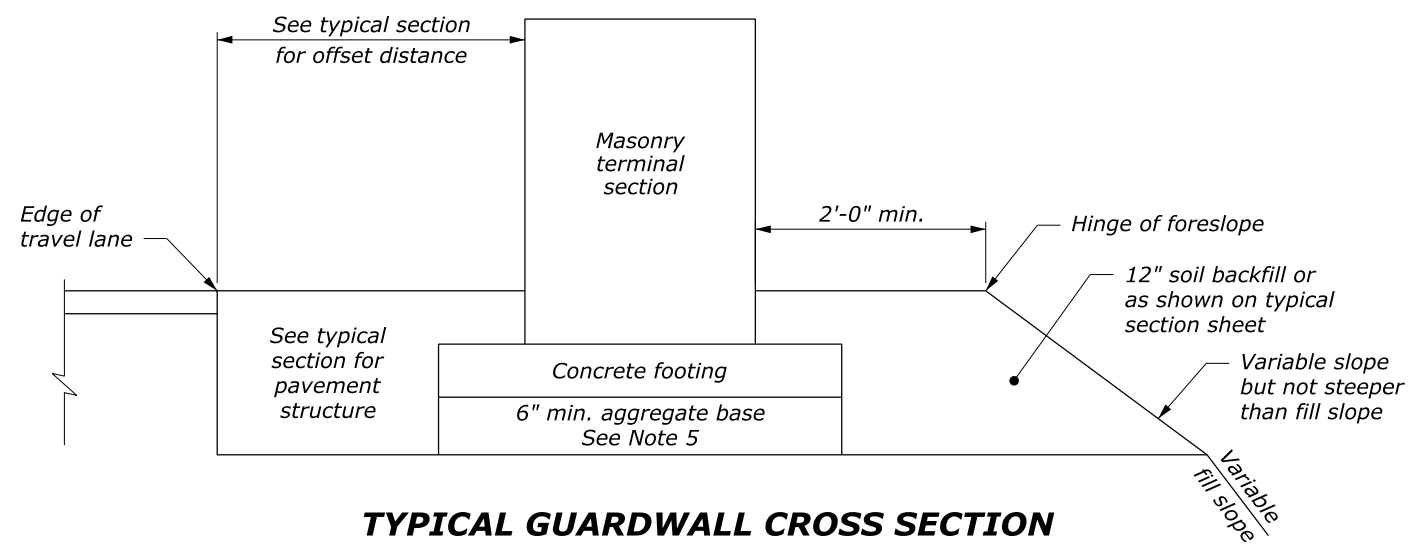
1. Use the Type SAT (Stand alone terminal) terminal section or the Type BT (Buried terminal) terminal section as specified.
2. For the Type BT terminal section delete the last 5 feet of the Type SAT terminal section. See Standard 204-1, Earth Berm for Roadside Barrier Terminal Section, for construction of the earth berm.
3. Extend the fill widening a minimum of 5 feet behind the guardwall for the Type SAT terminal section, unless otherwise directed.
4. The plan view guardwall flare indicates the minimum length and rate required. Flare the guardwall to locate the terminal section outside the clear zone as directed by the CO.
5. The depth of base may be less than 6 inches as directed by the CO, when the foundation is on either rock fill or solid rock.
6. Use the appropriate flare rate in guardwall layout to locate the guardwall terminal section outside the clear zone as directed by the CO.



ELEVATION



SECTION A-A



TYPICAL GUARDWALL CROSS SECTION

| GUARDWALL FLARE RATE TABLE | | | |
|----------------------------|----------------------|------------------|------------------|
| Design Speed (mph) | Shy Line Offset (ft) | Flare Rate (a:b) | |
| | | Inside Shy Line | Outside Shy Line |
| 60 | 8.0 | 26:1 | 18:1 |
| 50 | 6.5 | 21:1 | 14:1 |
| 40 | 4.5 | 16:1 | 10:1 |
| 30 or less | 3.5 | 13:1 | 8:1 |

NO SCALE

U.S. DEPARTMENT OF TRANSPORTATION
 FEDERAL HIGHWAY ADMINISTRATION
 FEDERAL LANDS HIGHWAY

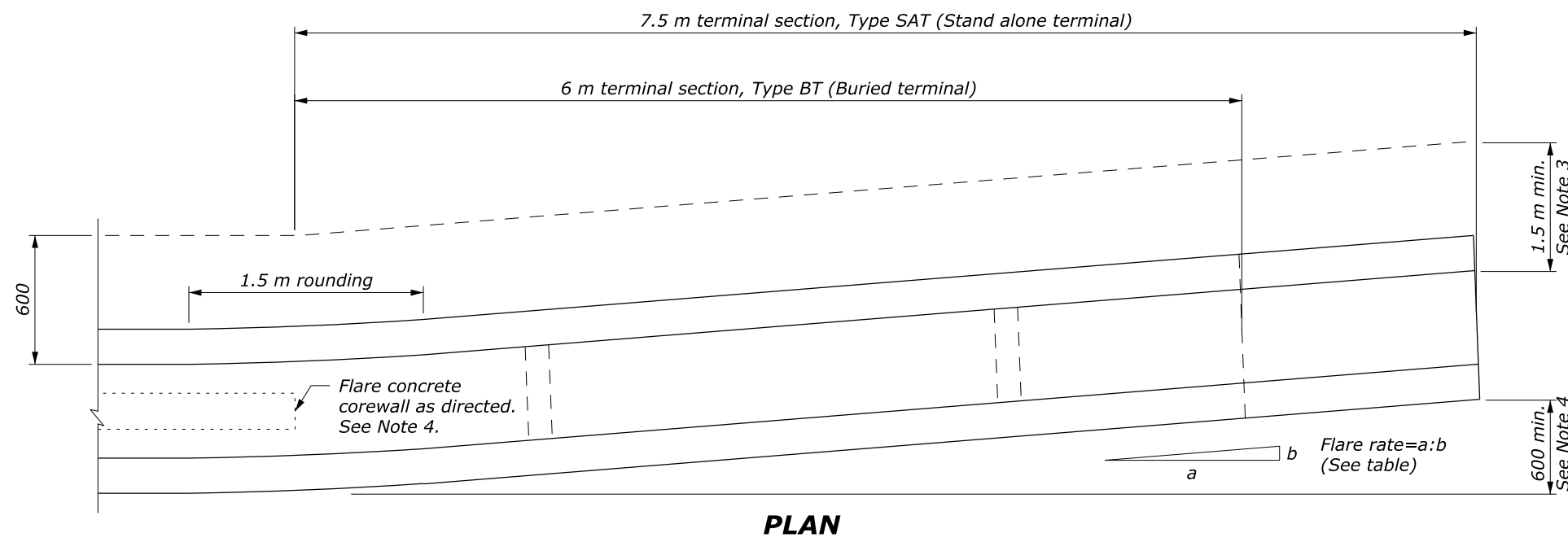
U.S. CUSTOMARY STANDARD

**STONE MASONRY GUARDWALL
 TERMINAL SECTIONS
 TYPE SAT AND TYPE BT**

STANDARD APPROVED FOR USE 3/1990
 REVISED: 4/1994 6/2005

STANDARD
 620-3

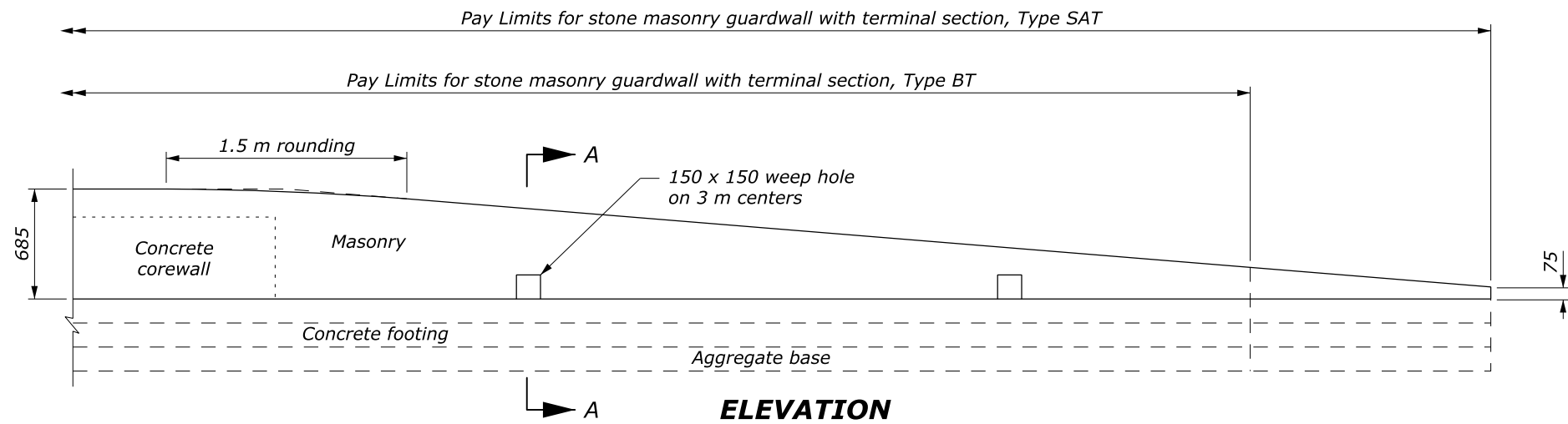
c:\myfiles\pw_production\dms67489\std620-3.dgn [USC] 24 August 2015 3:23 PM



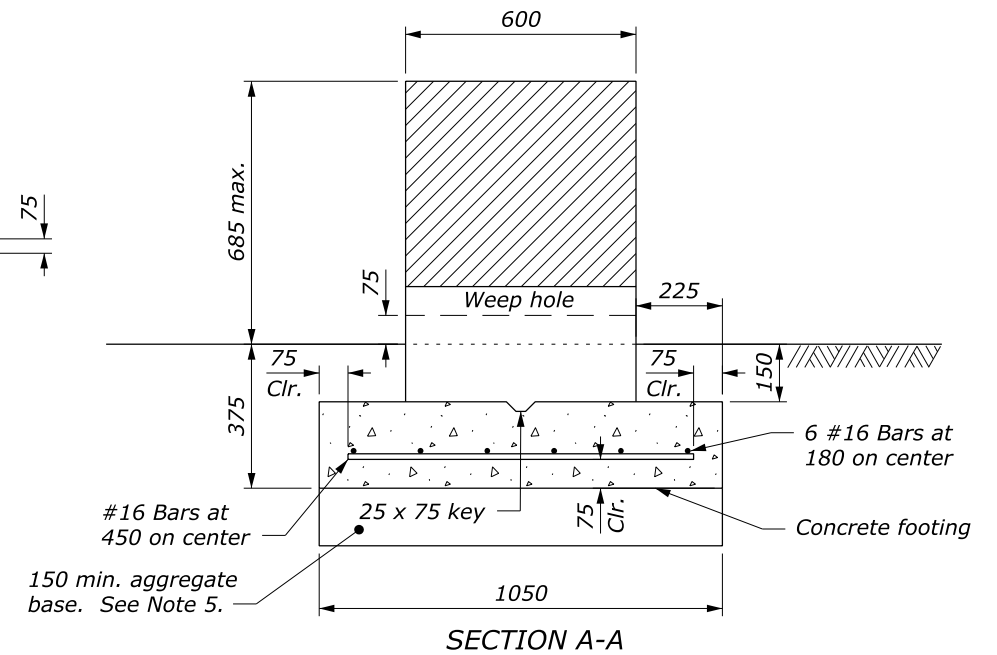
PLAN

NOTE:

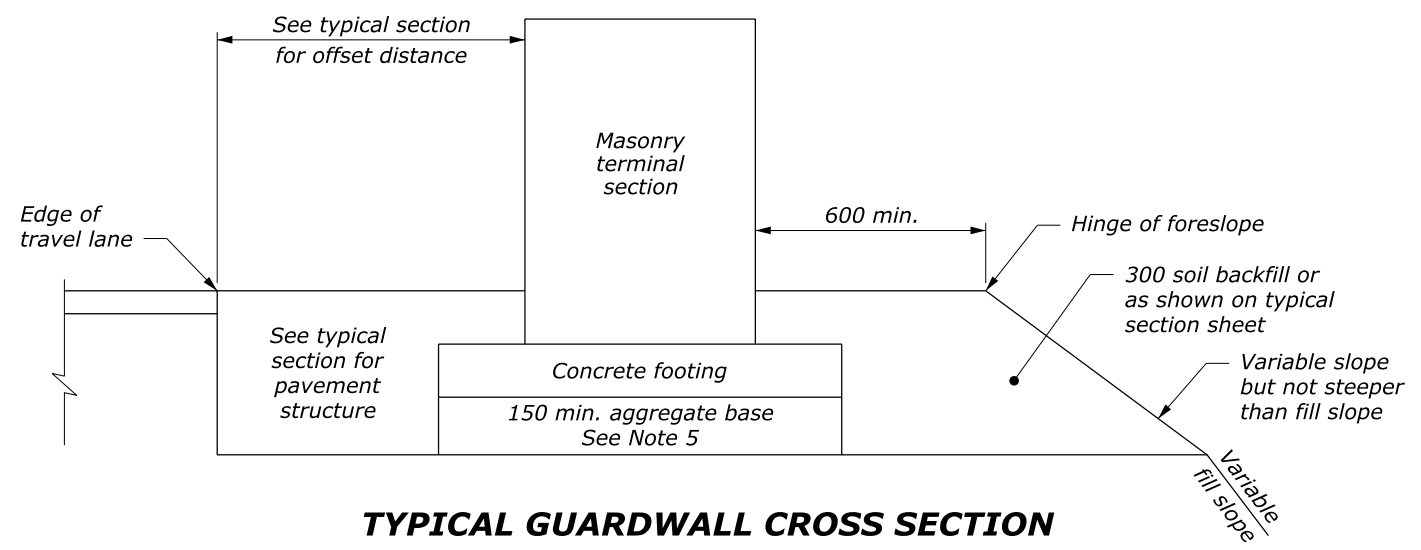
1. Use the Type SAT (Stand alone terminal) terminal section or the Type BT (Buried terminal) terminal section as specified.
2. For the Type BT terminal section delete the last 1.5 m of the Type SAT terminal section. See Standard M204-1, Earth Berm for Roadside Barrier Terminal Section, for construction of the earth berm.
3. Extend the fill widening a minimum of 1.5 m behind the guardwall for the Type SAT terminal section, unless otherwise directed.
4. The plan view guardwall flare indicates the minimum length and rate required. Flare the guardwall to locate the terminal section outside the clear zone as directed by the CO.
5. The depth of base may be less than 150 mm as directed by the CO, when the foundation is on either rock fill or solid rock.
6. Use the appropriate flare rate in guardwall layout to locate the guardwall terminal section outside the clear zone as directed by the CO.
7. Dimensions without units are millimeters.



ELEVATION



SECTION A-A



TYPICAL GUARDWALL CROSS SECTION

| Design Speed (km/h) | Shy Line Offset (meters) | Flare Rate (a:b) | |
|---------------------|--------------------------|------------------|------------------|
| | | Inside Shy Line | Outside Shy Line |
| 100 | 2.4 | 26:1 | 18:1 |
| 80 | 2.0 | 21:1 | 14:1 |
| 60 | 1.4 | 16:1 | 10:1 |
| 50 or less | 1.1 | 13:1 | 8:1 |

U.S. DEPARTMENT OF TRANSPORTATION
FEDERAL HIGHWAY ADMINISTRATION
FEDERAL LANDS HIGHWAY

METRIC STANDARD

**STONE MASONRY GUARDWALL
TERMINAL SECTIONS
TYPE SAT AND TYPE BT**

STANDARD APPROVED FOR USE 3/1996
REVISED: 6/1997 6/2005

STANDARD
M620-3

NO SCALE