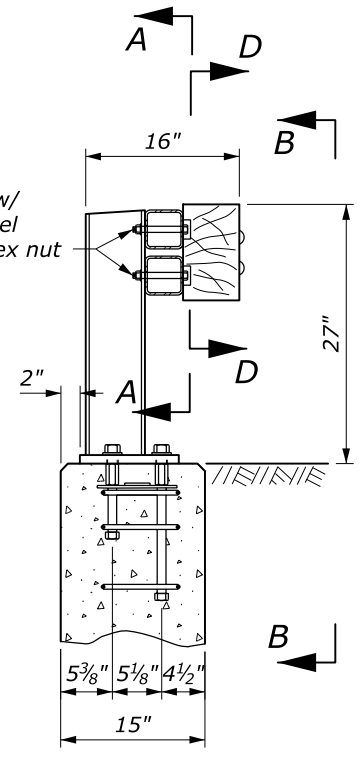


HSS 4" x 4" x 1/4" TUBES ELEVATION

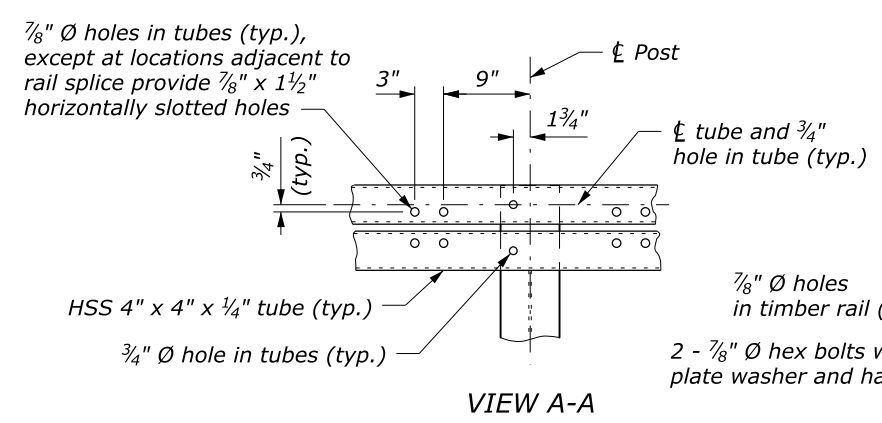
BRIDGE RAIL ELEVATION

NOTE:

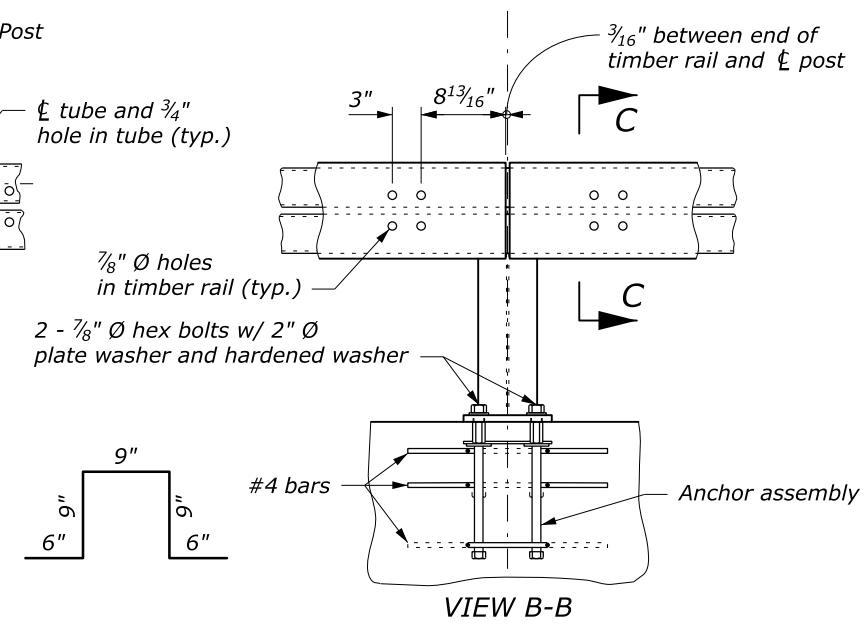
1. Furnish steel for rail posts, base plates, shims, splice sleeves, and anchor assembly plates conforming to ASTM A36. Furnish structural tubing for rails conforming to ASTM A500, Grade B. Paint all metal components of the bridge rail except post base shims, anchor assemblies, and rail splice sleeves. Galvanize post base shims, anchor assemblies, and rail splice sleeves. Furnish hex bolts conforming to ASTM A325. Furnish hex coupling nuts with a center stop conforming to ASTM A563, Grade C, D, or DH. For all other fasteners conform to ASTM A307.
2. Submit fabrication drawings according to Section 555 and show rail section lengths, splice locations, rail post spacing, and fastener lengths. Fabricate steel according to Section 555 before galvanizing or painting. Weld according to Section 555.
3. Connect each HSS 4" x 4" x 1/4" tube to at least three posts between splices.
4. Erect the rail parallel to grade.



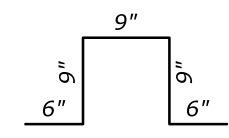
TYPICAL SECTION @ POST



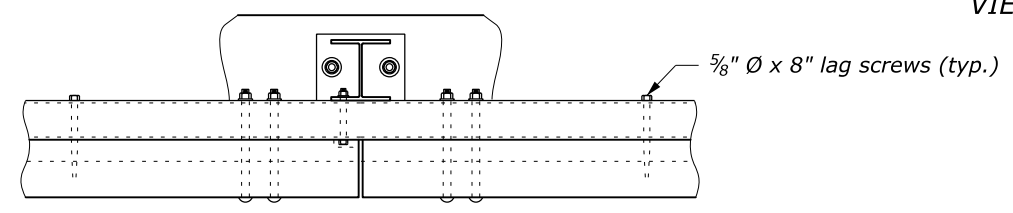
VIEW A-A



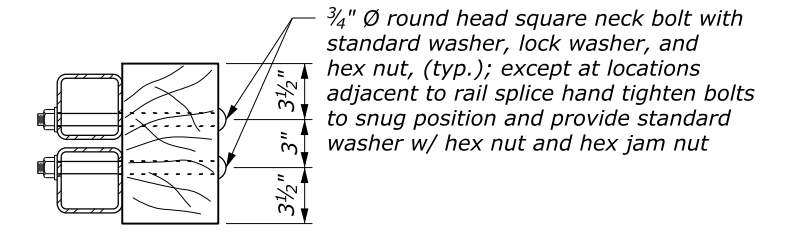
VIEW B-B



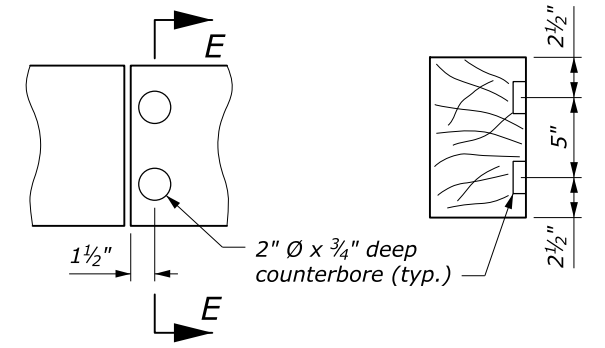
Anchor assembly



PLAN VIEW @ POST



SECTION C-C



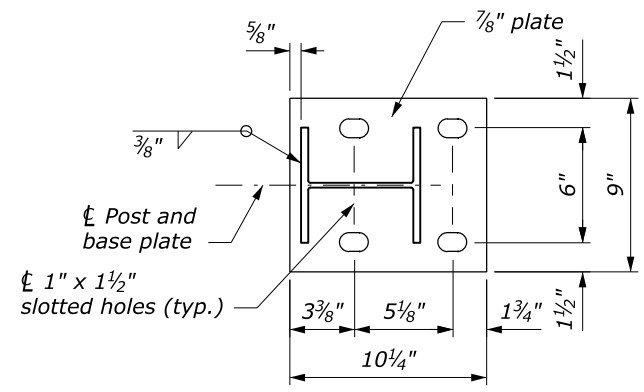
VIEW D-D

SECTION E-E

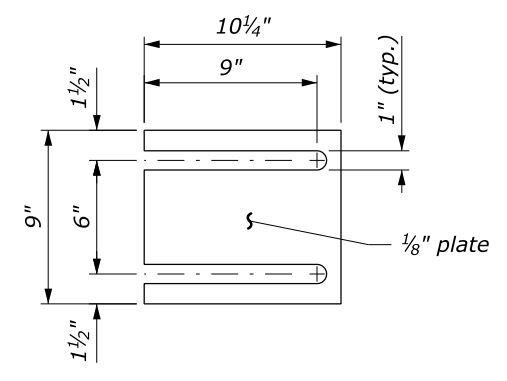
c:\myfiles\pw_production\dms67445\std556-1.dgn [USC] 9 August 2016 4:18 PM

NO SCALE

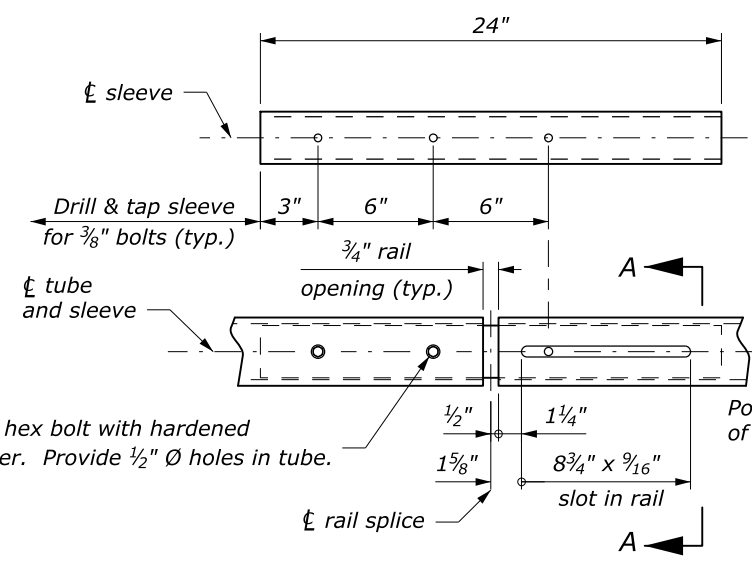
U.S. DEPARTMENT OF TRANSPORTATION FEDERAL HIGHWAY ADMINISTRATION FEDERAL LANDS HIGHWAY	
U.S. CUSTOMARY STANDARD TUBULAR STEEL-BACKED TIMBER BRIDGE RAIL Sheet 1 of 2	
STANDARD APPROVED FOR USE --/----	STANDARD
REVISED: 8/2016	556-1



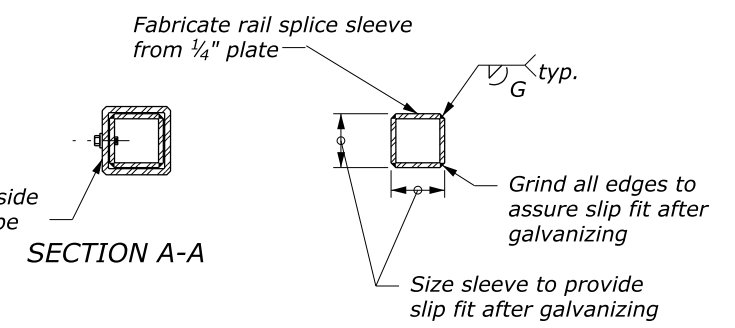
BASE PLATE DETAIL



RAIL POST BASE SHIM

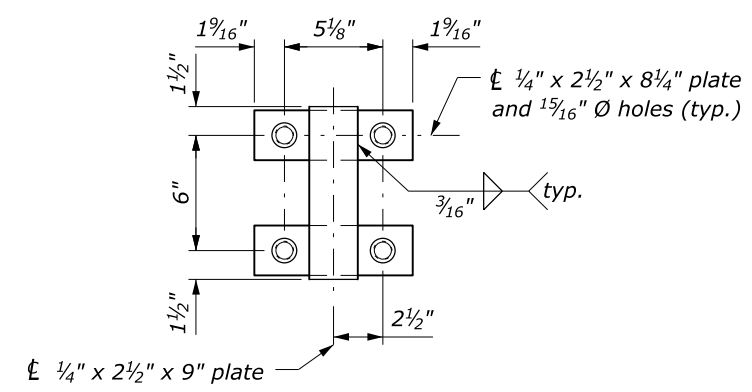


RAIL SPLICE DETAIL

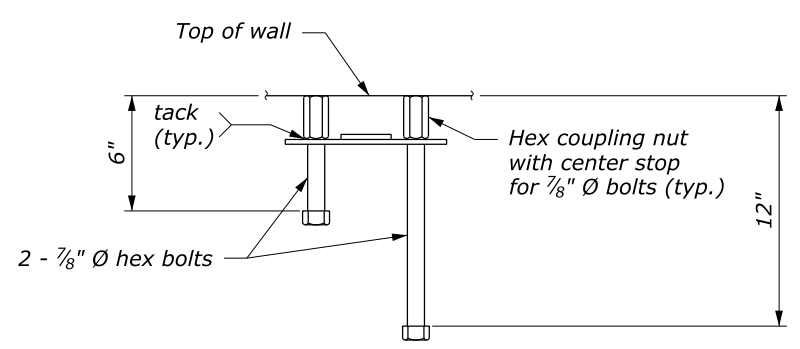


SLEEVE

SECTION A-A

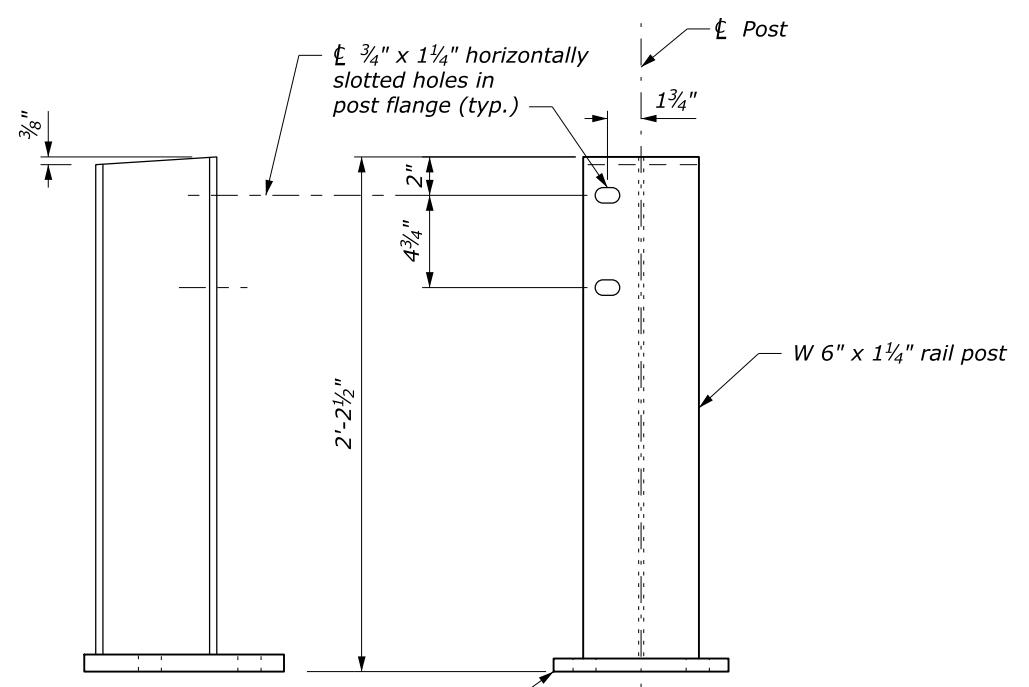


PLAN



ELEVATION

ANCHOR ASSEMBLY



POST ASSEMBLY

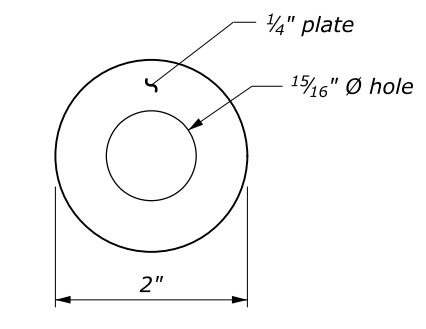


PLATE WASHER

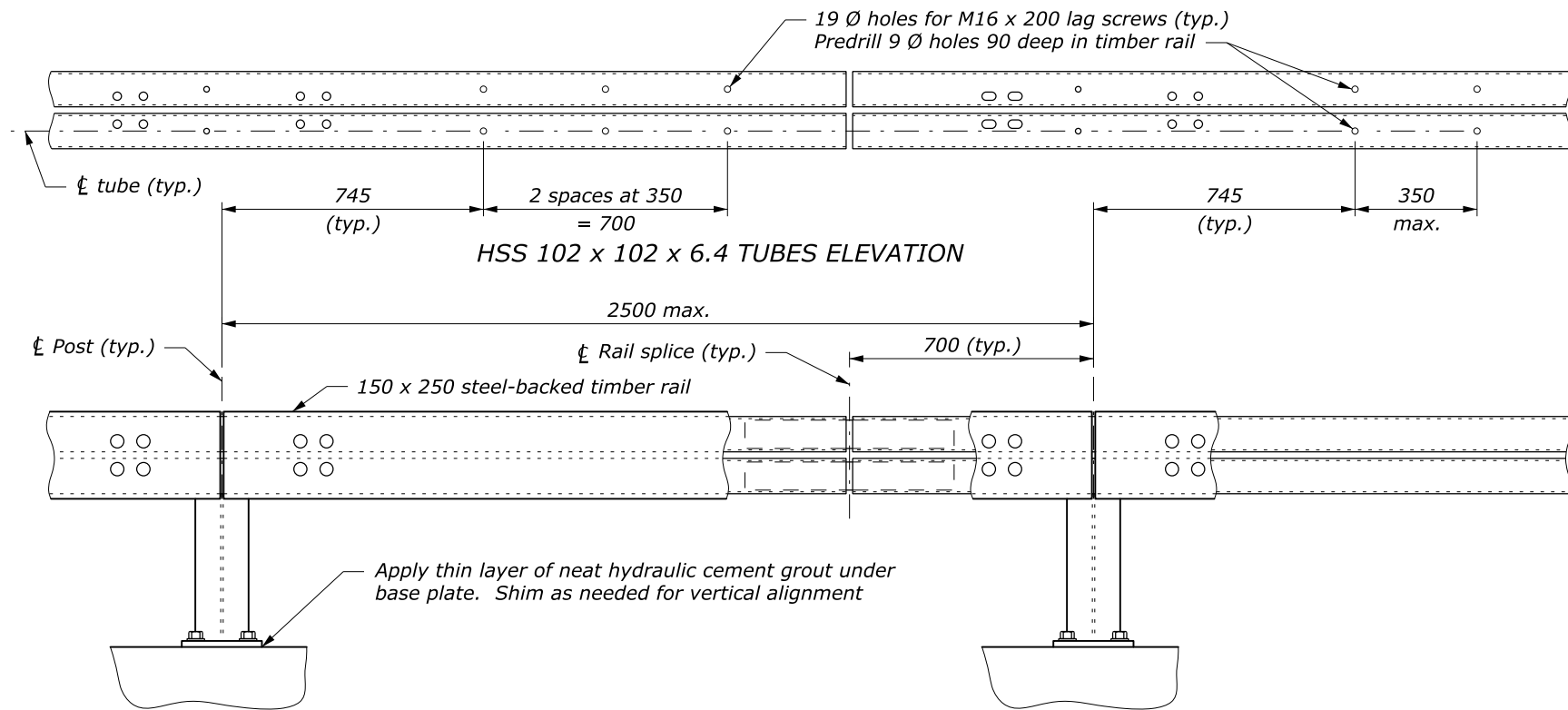
U.S. DEPARTMENT OF TRANSPORTATION
 FEDERAL HIGHWAY ADMINISTRATION
 FEDERAL LANDS HIGHWAY

U.S. CUSTOMARY STANDARD
**TUBULAR STEEL-BACKED
 TIMBER BRIDGE RAIL**
 Sheet 2 of 2

STANDARD APPROVED FOR USE --/----	STANDARD
REVISED: 8/2016	556-1

NO SCALE

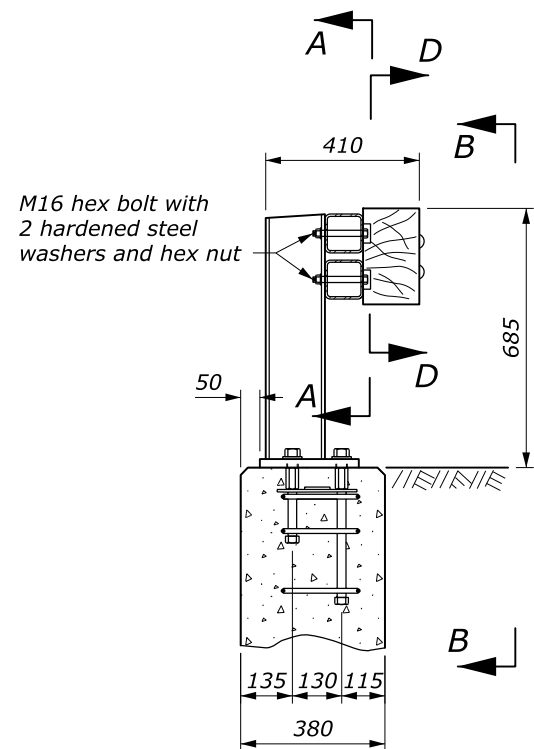
c:\myfiles\pw_production\dms67445\std556-1.dgn [USC2] 9 August 2016 4:18 PM



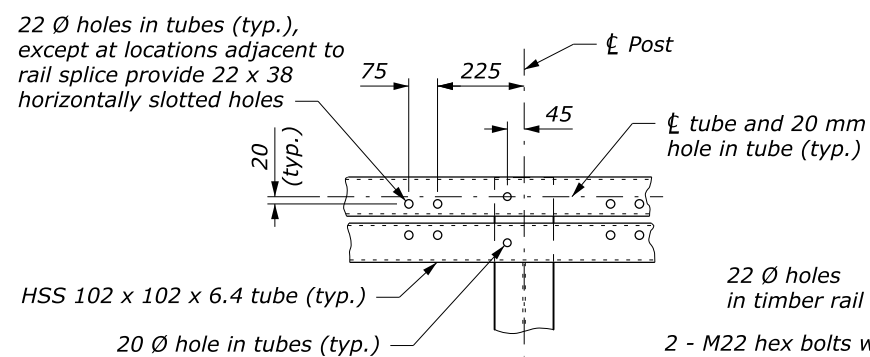
NOTE:

- Furnish steel for rail posts, base plates, shims, splice sleeves, and anchor assembly plates conforming to ASTM A36. Furnish structural tubing for rails conforming to ASTM A500, Grade B. Paint all metal components of the bridge rail except post base shims, anchor assemblies, and rail splice sleeves. Galvanize post base shims, anchor assemblies, and rail splice sleeves. Furnish hex bolts conforming to ASTM A325. Furnish hex coupling nuts with a center stop conforming to ASTM A563, Grade C, D, or DH. For all other fasteners conform to ASTM A307.
- Submit fabrication drawings according to Section 555 and show rail section lengths, splice locations, rail post spacing, and fastener lengths. Fabricate steel according to Section 555 before galvanizing or painting. Weld according to Section 555.
- Connect each HSS 102 x 102 x 6.4 tube to at least three posts between splices.
- Erect the rail parallel to grade.
- Dimensions without units are millimeters.

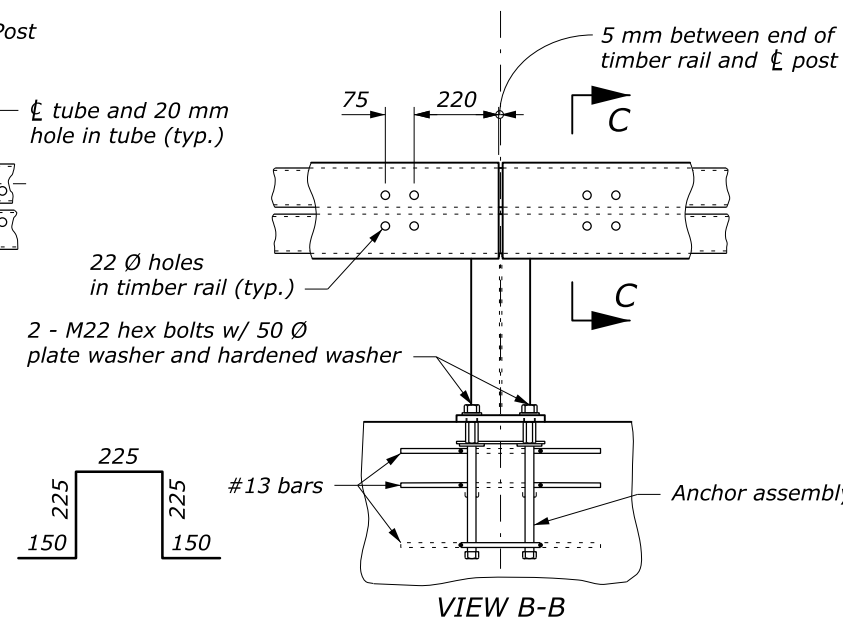
BRIDGE RAIL ELEVATION



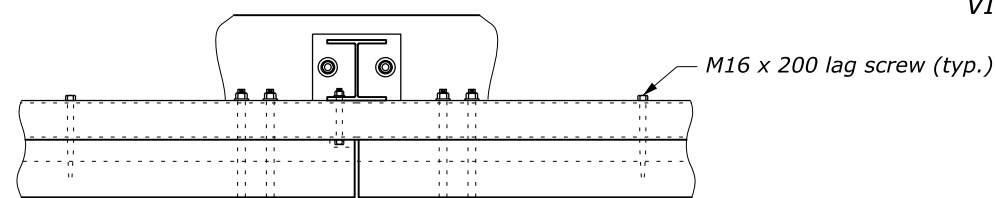
TYPICAL SECTION @ POST



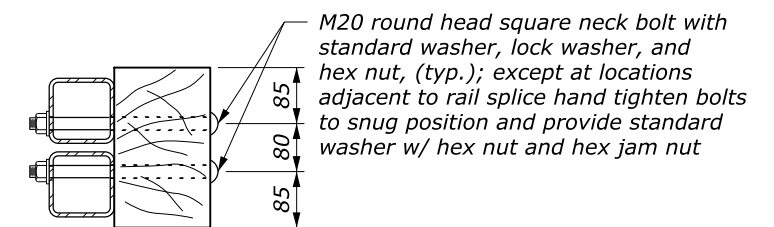
VIEW A-A



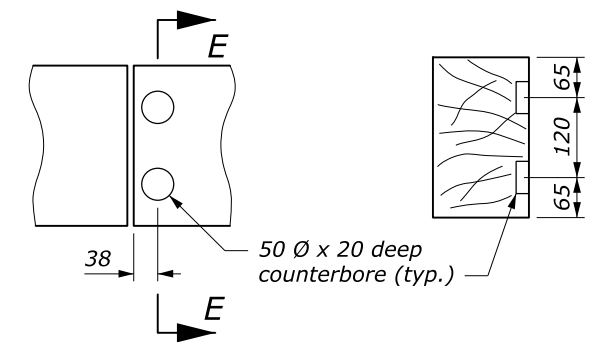
VIEW B-B



PLAN VIEW @ POST



SECTION C-C



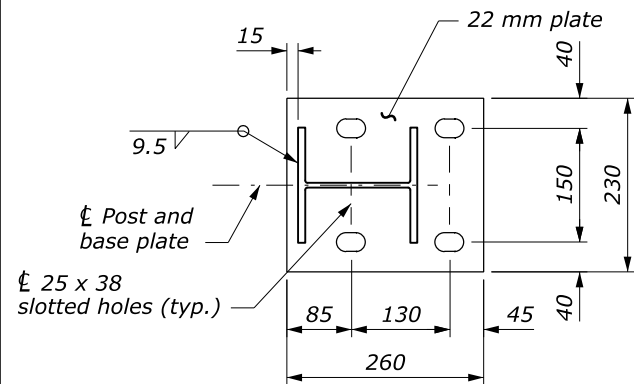
VIEW D-D

SECTION E-E

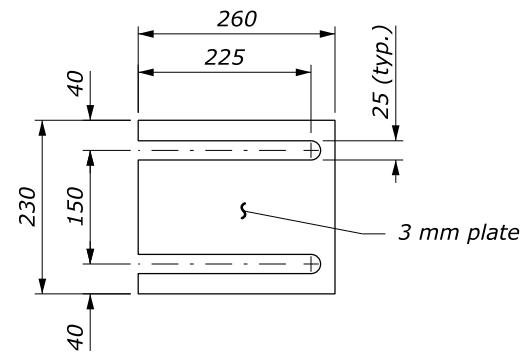
NO SCALE

U.S. DEPARTMENT OF TRANSPORTATION FEDERAL HIGHWAY ADMINISTRATION FEDERAL LANDS HIGHWAY	
METRIC STANDARD	
TUBULAR STEEL-BACKED TIMBER BRIDGE RAIL	
Sheet 1 of 2	
STANDARD APPROVED FOR USE --/----	STANDARD
REVISED: 8/2016	M556-1

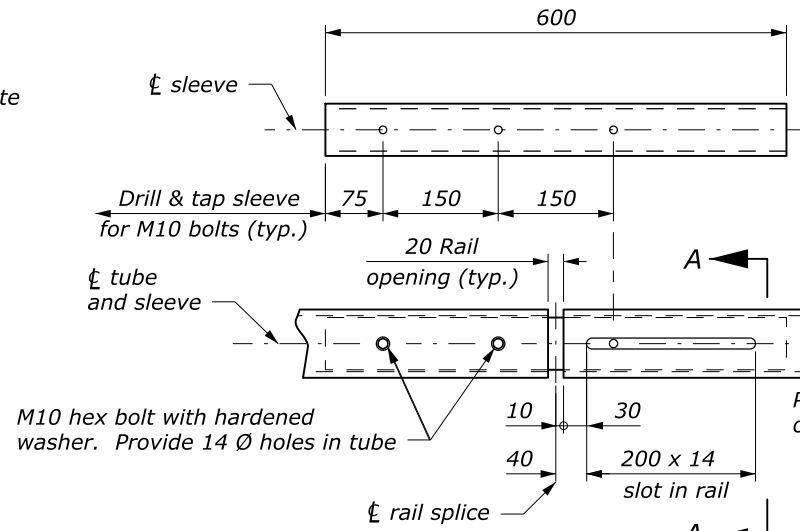
NOTE:
1. Dimensions without units are millimeters.



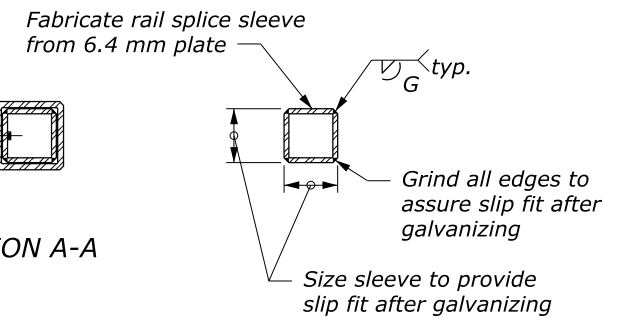
BASE PLATE DETAIL



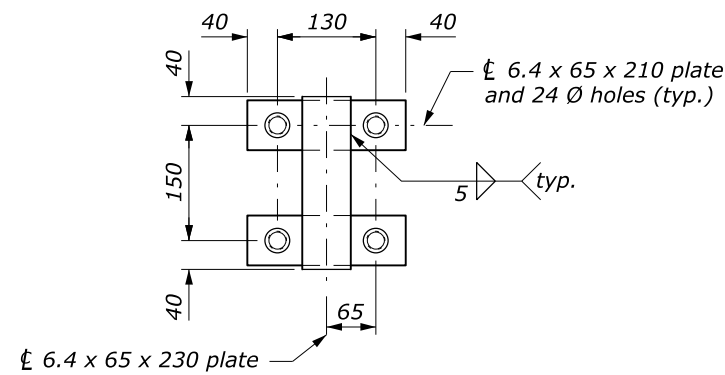
RAIL POST BASE SHIM



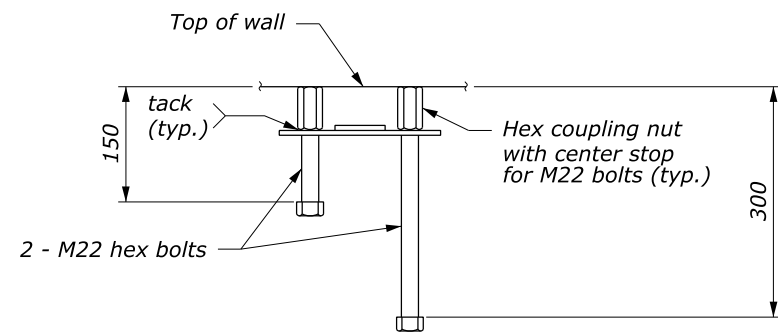
RAIL SPLICE DETAIL



SLEEVE

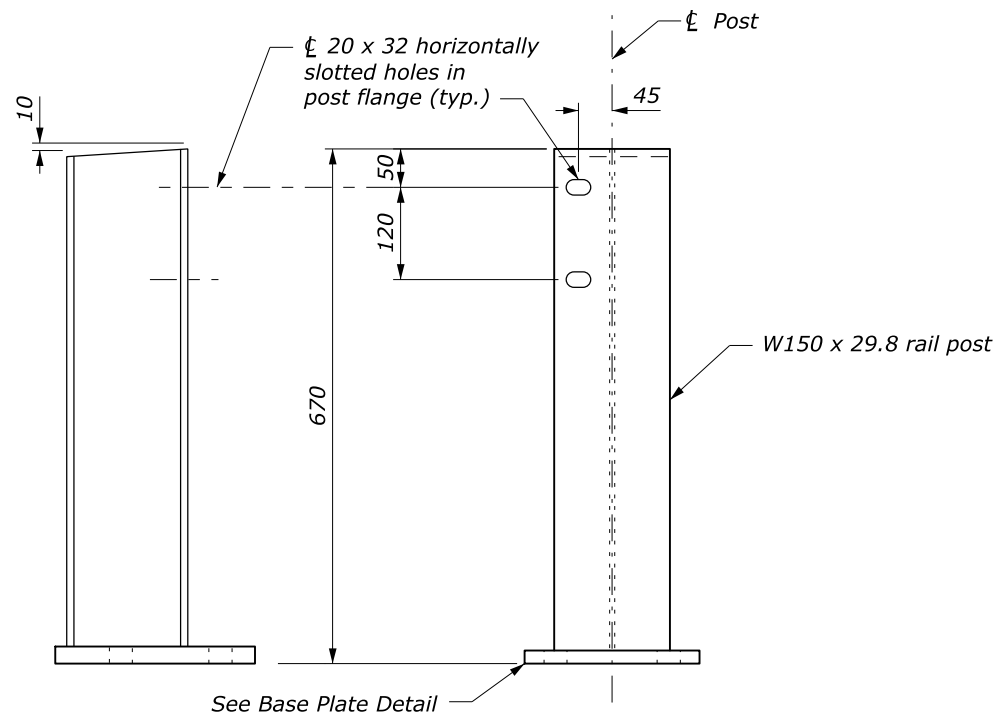


PLAN



ELEVATION

ANCHOR ASSEMBLY



POST ASSEMBLY

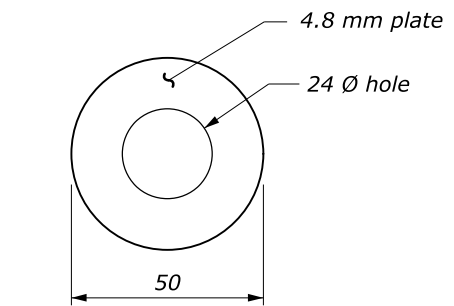


PLATE WASHER

NO SCALE

U.S. DEPARTMENT OF TRANSPORTATION FEDERAL HIGHWAY ADMINISTRATION FEDERAL LANDS HIGHWAY	
METRIC STANDARD	
TUBULAR STEEL-BACKED TIMBER BRIDGE RAIL	
Sheet 2 of 2	
STANDARD APPROVED FOR USE --/----	STANDARD
REVISED: 8/2016	M556-1