

Lower Colorado River Multi-Species Conservation Program



Balancing Resource Use and Conservation

Acquisition of Unprotected Habitat: Desert Tortoise & Flat-tailed Horned Lizard

Jed Blake
Reclamation-MSCP Restoration Team
CRTR 2012 Laughlin, Nevada



LCR MSCP Conservation Measures

- Flow Related Covered Activity
 - Applies only to applicable LCR MSCP stakeholders
 - i.e. (ongoing water diversions, return flows, hydro power generation and transmission)
- Non-Flow Related Covered Activity
 - Applies only to applicable LCR MSCP stakeholders
 - i.e. (OM&R: Operations, Maintenance and Repair)
 - 234 miles of canals in Yuma Valley
 - Facilities and equipment by which hydro power is transmitted
 - Service roads, comm lines, docks, boat ramps and rip rap



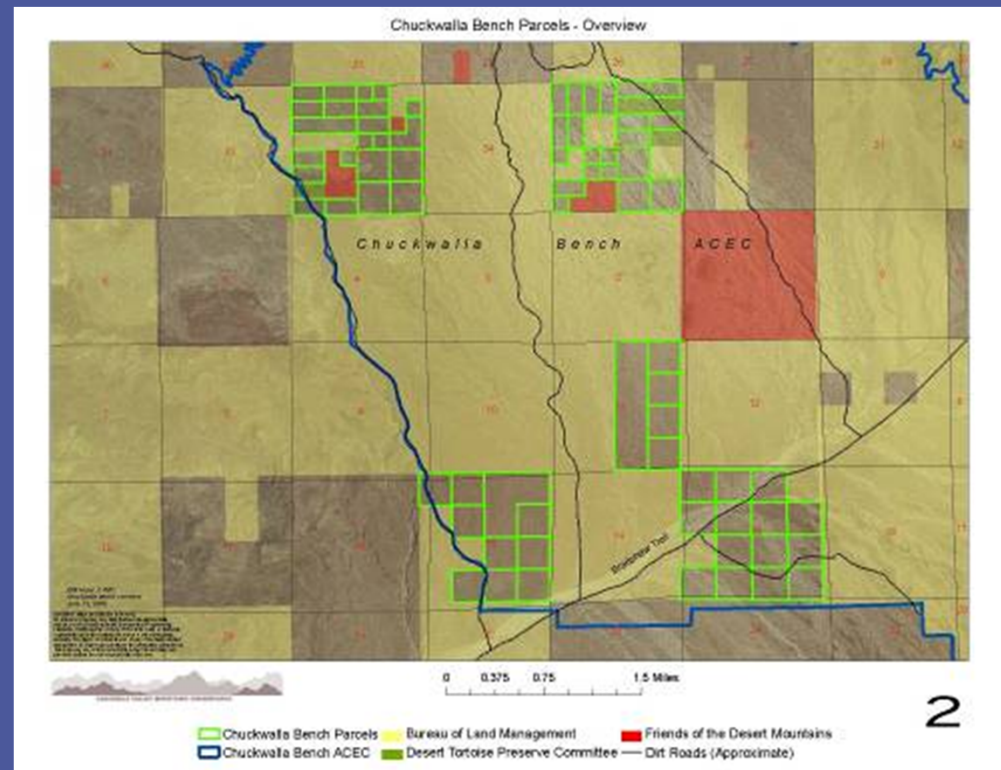
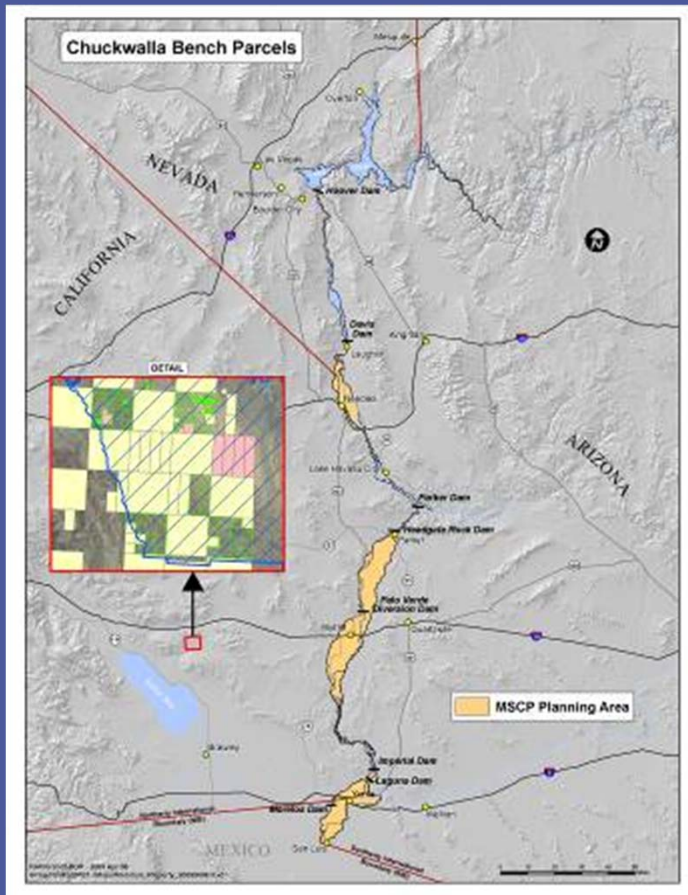
Conservation Measure DET01

“DET01-Aquire and protect 230 acres of existing unprotected occupied habitat.”

- Land must be undisturbed & inhabited
- Acquire and transfer lands to appropriate wildlife/land management agency.
- Lands within existing MA preferred for management
- Project completed is Spring 2011
- 7 Parcels purchased for a total of 260 acres



Riverside County, CA Chuckwalla Bench ACEC



Chuckwalla Bench ACEC



Desert Tortoise Acquisition Process

- Working w/ Coachella Conservancy, land owners prioritized
- Contact local BLM office ensuring property to be transferred is consistent w/ BLM's management goals
- Right of Entry letters mailed to land owners
- Hazmat, Cultural and Species Surveys administered
- Federal Appraisal Conducted to establish fair market value
- Title review demonstrating a clear title
- BLM Solicitor reviews title and associated documents
- LCR MSCP Program Manager makes formal offer to land owner
- Funding is transferred electronically to a local escrow company



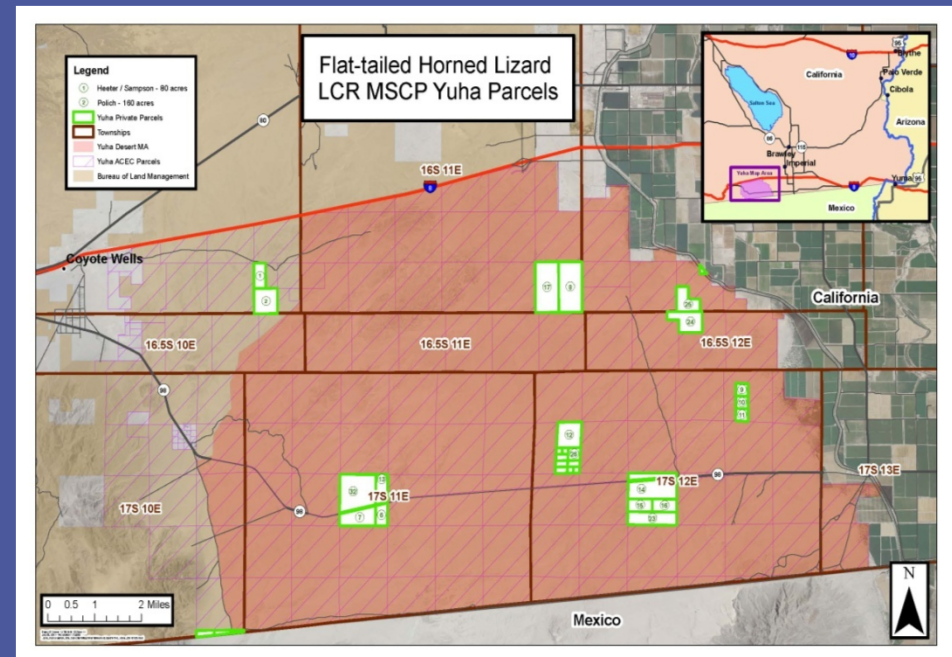
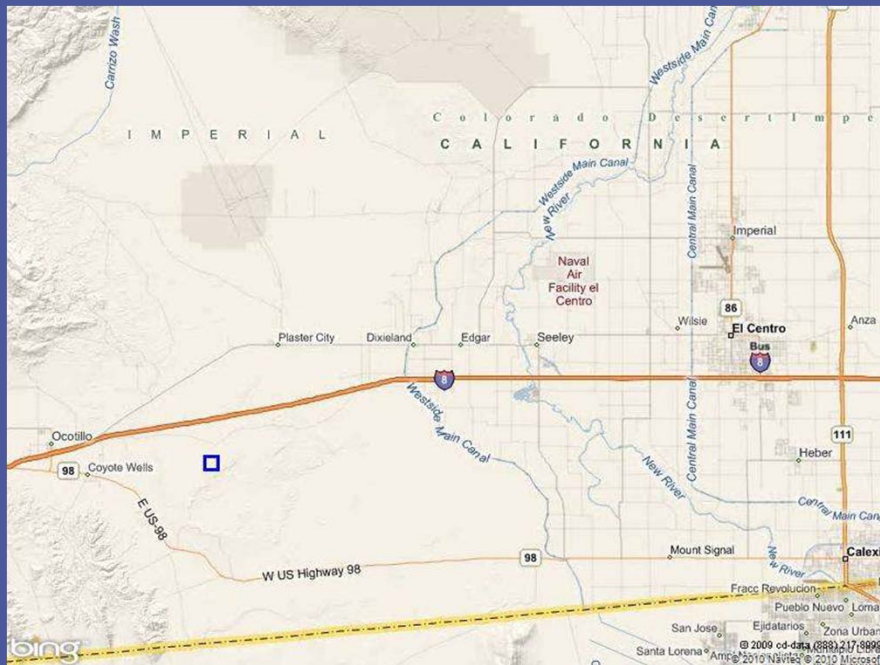
Conservation Measure FTHL01

“FTHL01-Acquire and protect 230 acres of existing unprotected occupied flat-tailed horned lizard habitat.”

- Land must be undisturbed and inhabited
- Acquire and transfer lands to appropriate wildlife/land management agency
- Forecasted completion is Spring 2012



Imperial County, CA Yuha Desert ACEC



Yuha Desert ACEC



Acquisition Process

- FTHL management is coordinated through BLM's El Centro Field Office
- Yuha Desert ACEC is smallest management area and least prone to development due to impact restrictions
- Landowners are identified using county tax records & GIS maps
- Right of Entry letters mailed and due diligence performed
- Species Surveys conducted by contractors; 3 FTHLs on parcels
- Two parcels purchased for a total of 240 acres



Questions?

Jed Blake (LC-8451)
Site Development Coordinator
Reclamation-LCR MSCP
500 Fir St.
Boulder City, NV 89005

Office: 702-293-8165
Email: jblake@usbr.gov
www.lcrmscp.gov

