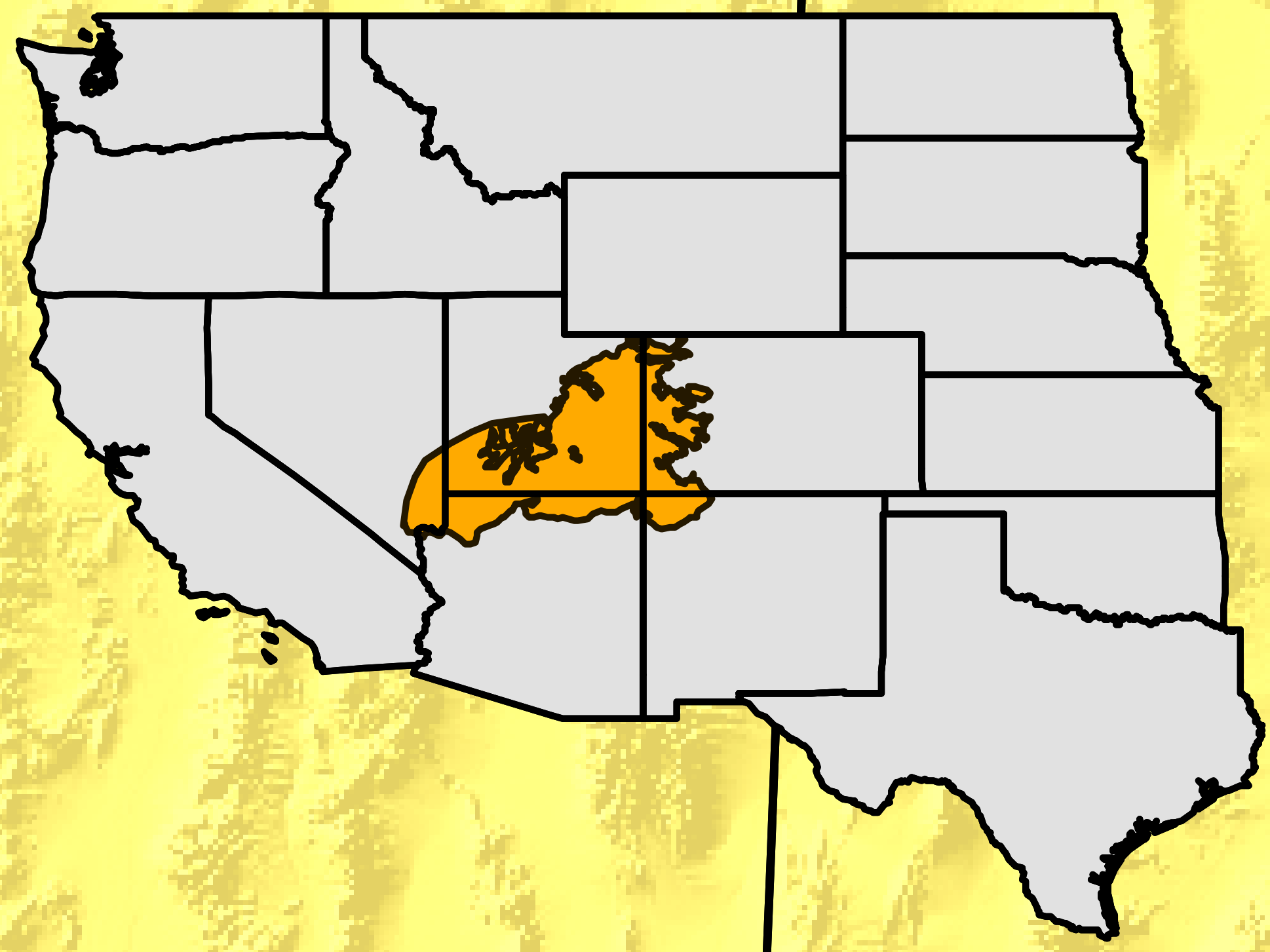


Distribution of: **Tamarisk Leaf Beetle** *(Diorhabda carinulata)*

Colorado Plateau - 2009



**Non-Colorado Plateau originated
Diorhabda populations possible**
(Nevada/Central Utah releases)

Sample Locations

- Beetle Presence**
- Absent (0)
 - Infrequent Individuals (1-4)
 - Small Establishment (5-25)
 - Large Establishment (26-500)

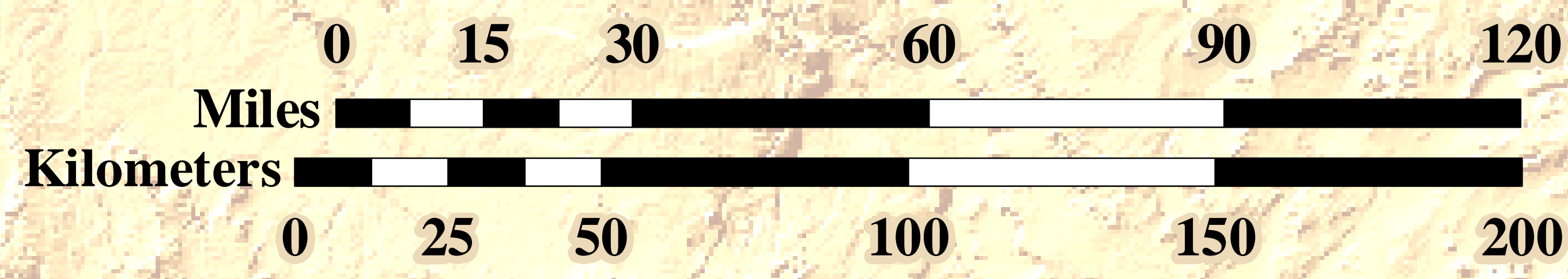
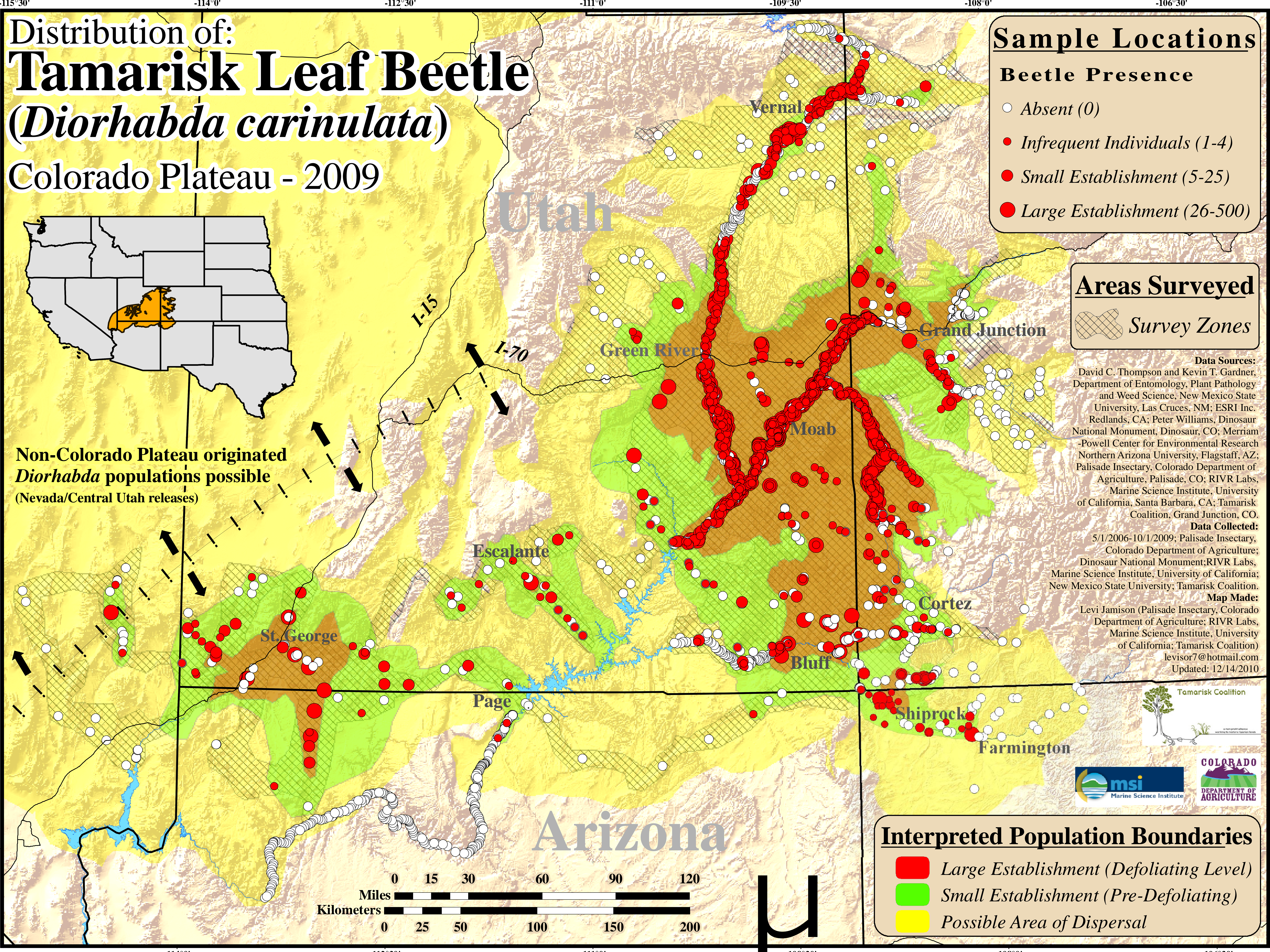
Areas Surveyed



Data Sources:
David C. Thompson and Kevin T. Gardner, Department of Entomology, Plant Pathology and Weed Science, New Mexico State University, Las Cruces, NM; ESRI Inc. Redlands, CA; Peter Williams, Dinosaur National Monument, Dinosaur, CO; Merriam-Powell Center for Environmental Research Northern Arizona University, Flagstaff, AZ; Palisade Insectary, Colorado Department of Agriculture, Palisade, CO; RIVR Labs, Marine Science Institute, University of California, Santa Barbara, CA; Tamarisk Coalition, Grand Junction, CO.

Data Collected:
5/1/2006-10/1/2009; Palisade Insectary, Colorado Department of Agriculture; Dinosaur National Monument; RIVR Labs, Marine Science Institute, University of California; New Mexico State University; Tamarisk Coalition.

Map Made:
Levi Jamison (Palisade Insectary, Colorado Department of Agriculture; RIVR Labs, Marine Science Institute, University of California; Tamarisk Coalition) levisor7@hotmail.com
Updated: 12/14/2010



Interpreted Population Boundaries

- Large Establishment (Defoliating Level)
- Small Establishment (Pre-Defoliating)
- Possible Area of Dispersal

