

Lower Colorado River Multi-Species Conservation Program



Balancing Resource Use and Conservation

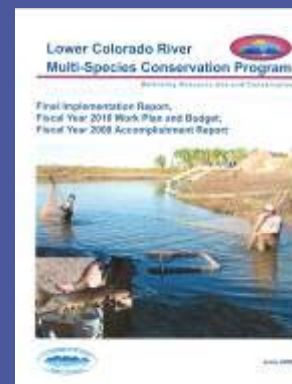
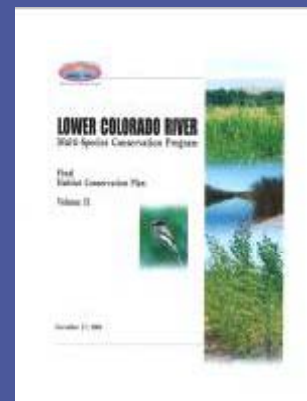
Desert Tortoise & Flat-tailed Horned Lizard Habitat Acquisition

Jed Blake
Reclamation-MSCP Restoration Team



LCR MSCP Background

- April 2005, LCR MSCP documents signed
- 50yr Federal/State/Tribal Habitat Conservation Plan allowing for current and future water and power operations on the Lower Colorado River
- 50/50 Federal-State Cost Share
 - Federal 50%
 - Nevada 12.5%
 - California 25%
 - Arizona 12.5%
- Reclamation is the implementing agency
- Regulatory/Compliance/
Annual Work Plan can be found
at www.lcrmscp.gov



Habitat Creation & Native Fish Goals

5,940 acres Cottonwood-willow

1,320 acres of Honey Mesquite

512 acres of Marsh

360 acres of backwater

660,000 razorback sucker

620,000 bonytail



LCR MSCP Conservation Measures

- Flow Related

- Applies only to applicable LCR MSCP stakeholders
 - i.e. (ongoing water diversions, return flows, hydro power generation and transmission)

- Non-Flow Related

- Applies only to applicable LCR MSCP stakeholders
 - i.e. (OM&R: Operations, Maintenance and Repair)
 - 234 miles of canals in Yuma Valley
 - Facilities and equipment by which hydro power is transmitted
 - Service roads, comm lines, docks, boat ramps and rip rap



Steering Committee & Approval Process

- 56 Federal/State/Tribal/NGO Stakeholders
 - Land and Water Resolution Presented
 - Estimated price per/acre & Targeted lands
 - Additional costs include: Appraisals, Titles, Site Assessments, Solicitor Review, etc.
 - Estimated completion date
 - Project becomes a LCR MSCP Work Task



Conservation Measure DET01

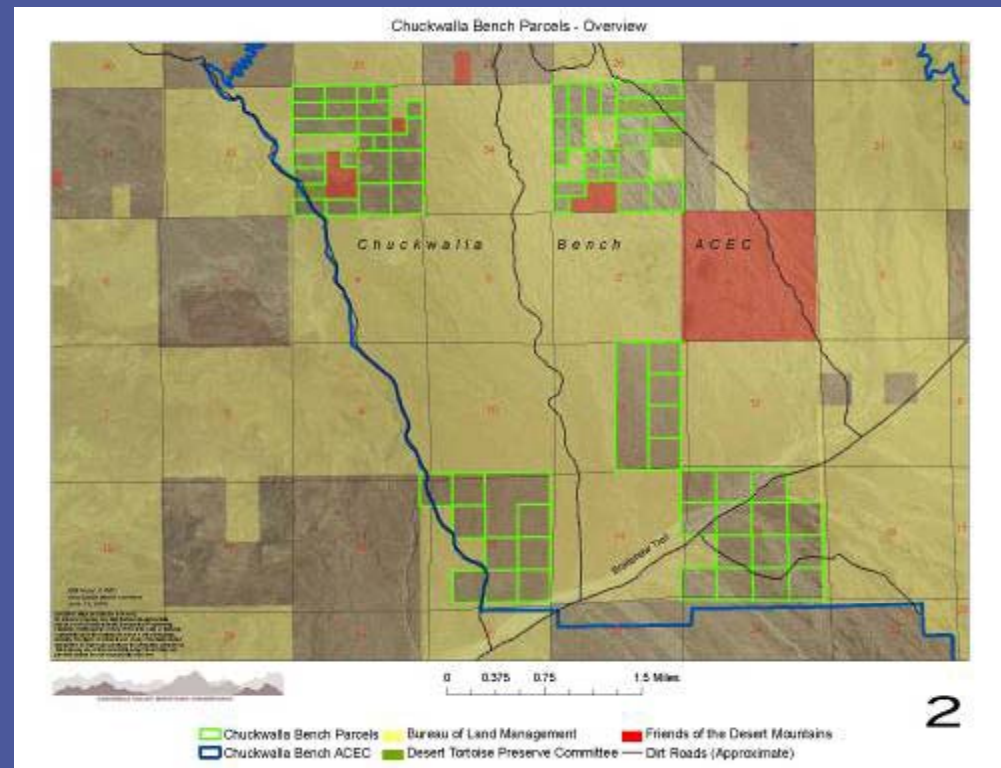
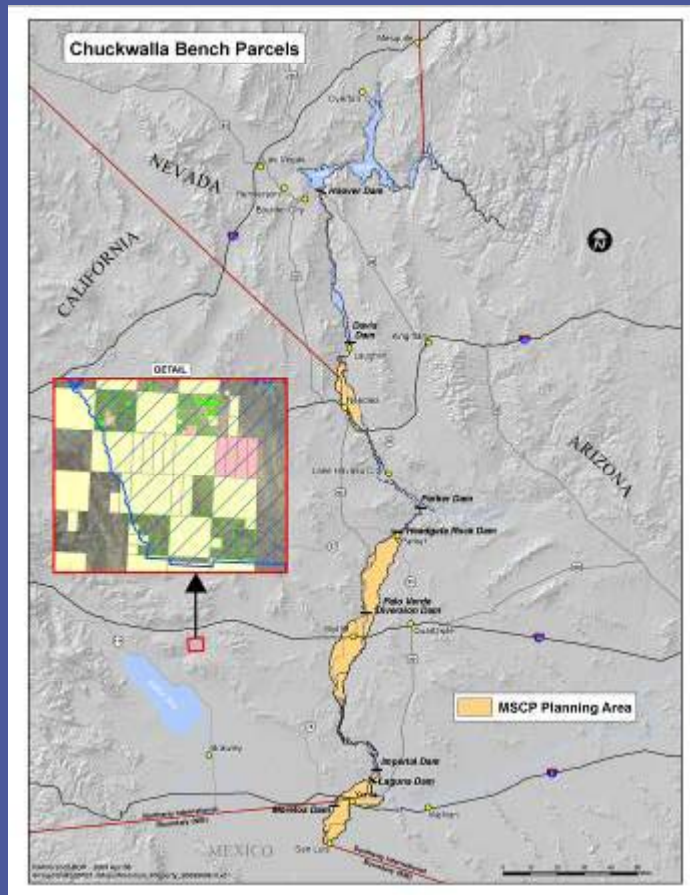
“DET01-Aquire and protect 230 acres of existing unprotected occupied habitat.”

- Land must be undisturbed & inhabited
- Acquire and transfer lands to appropriate wildlife/land management agency.
- Lands must be within existing MA
- Forecasted completion is Spring 2011

2007 MSCP Issues Request for Projects: Coachella Valley Mountains Conservancy



Riverside County, CA Chuckwalla Bench ACEC



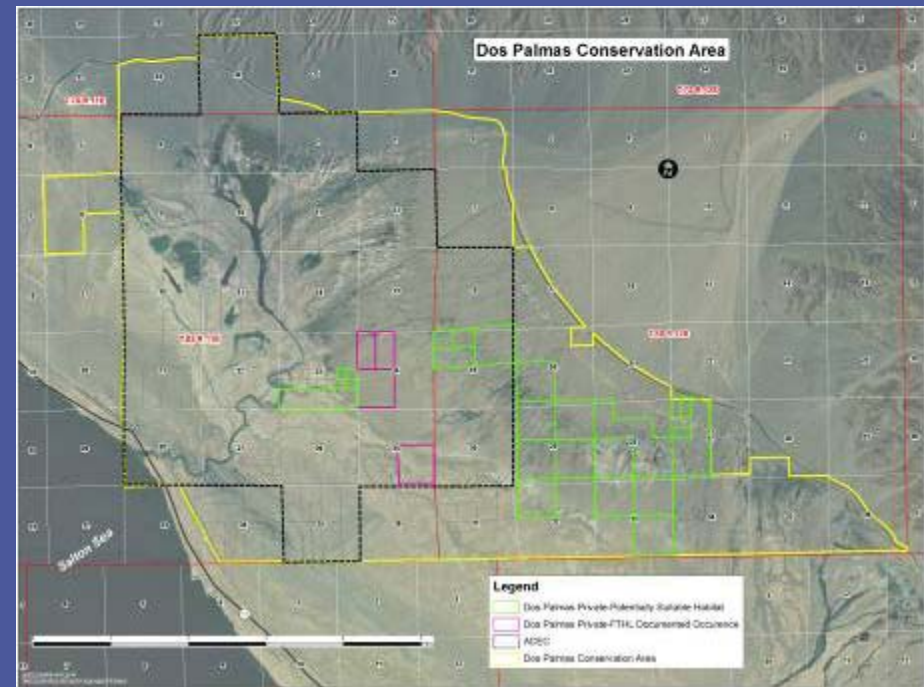
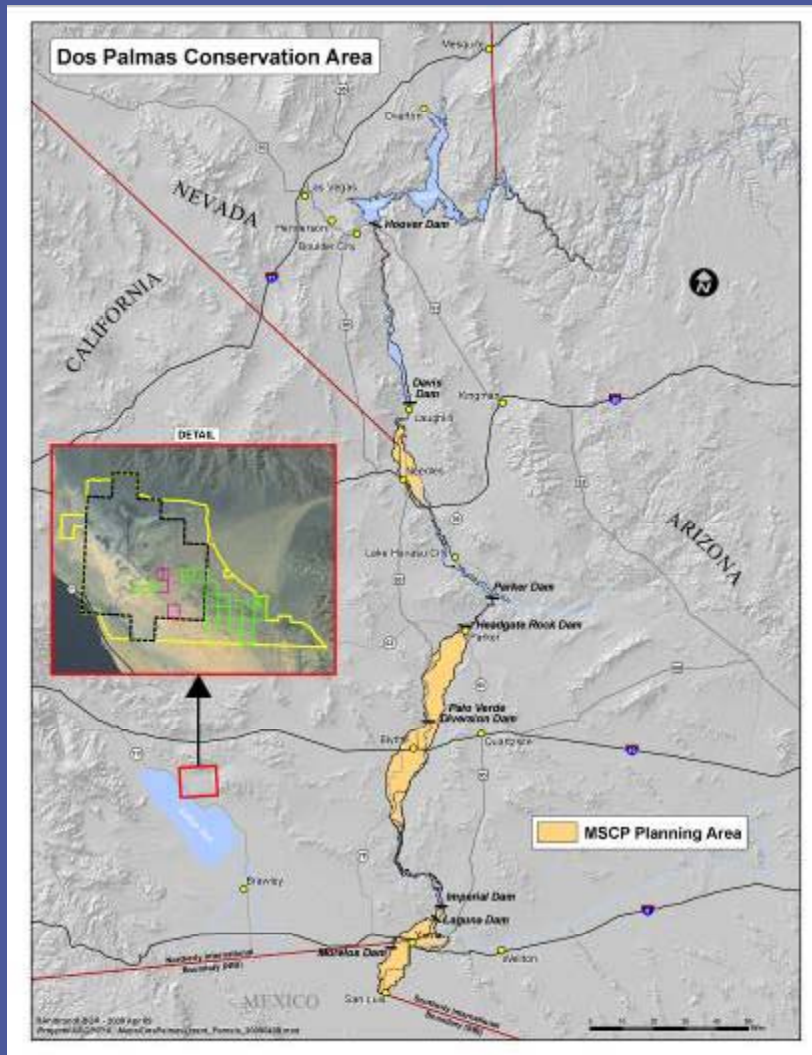
Conservation Measure FTHL01

“FTHL01-Acquire and protect 230 acres of existing unprotected occupied flat-tailed horned lizard habitat.”

- Land must be undisturbed and inhabited
- Acquire and transfer lands to appropriate wildlife/land management agency
- Forecasted completion is Spring 2012



Riverside County, CA Dos Palmas Preserve



Acquisition Process

- Working with Coachella Valley Mountains Conservancy
 - Land owners Identified through county assessor
 - Right of Entry mailed and granted for appraisal
 - Federal Appraisal establishes “Fair Market Value”
 - Offer letter mailed to owners @ \$450-\$500 per/acre
 - Offers accepted; initiates site assessments, title review, donation letter to BLM, transfer funds electronically to land owner.



Questions?

Jed Blake (LC-8451)
Site Development Coordinator
Reclamation-LCR MSCP
500 Fir St.
Boulder City, NV 89005

Office: 702-271-3237
Email: jblake@usbr.gov
www.lcrmcp.gov

