

Lower Colorado River



Multi-Species Conservation Program

Balancing Resource Needs

2009 Marshbird Surveys along the Lower Colorado River

Joe Kahl
Biological Science Technician
LCR-MSCP Wildlife Group



Yuma Clapper Rail (*Rallus longirostris yumanensis*)



Yuma Clapper Rail Status

- Federal – endangered (USDI 1968)
- California – threatened (CDFG 2006)
- Arizona – species of special concern (ADGF 2006)
- Nevada – endangered (NAC 503.050)
- Mexico – threatened (Hinojosa-Huerta et al. 2004)

California Black Rail
(*Laterallus jamaicensis coturniculus*)



California Black Rail Status

- Federal - Migratory nongame species of special concern (USFWS 1995)
- Arizona – wildlife species of special concern (AGFD 2002)
- California – listed as threatened (CDFG 2006)
- Nevada – not listed
- Mexico – listed as endangered (Hinojosa-Huerta 2004)

Least Bittern (*Ixobrychus exilis*)



Least Bittern Status

- Federal – migratory nongame bird of management concern (USFWS 1995)
- California – species of special concern (Remsen 1978)
- Arizona – species of special concern (AGFD 2001)
- Nevada – not listed
- Mexico – not listed

STANDARDIZED NORTH AMERICAN MARSH BIRD MONITORING PROTOCOLS



by Courtney J. Conway
Wildlife Research Report #2005-04



Survey Protocol

- 3 surveys – March 15 to May 31
- Surveys at same time each year, performed in same order
- Survey start - ½ hour before sunrise
- Surveys end – birds cease calling, < 1000
- Wind – less than 20 kph
- Rain – no survey today
- Calls played at 80-90 db at 1 m
- All surveyors receive training

The Survey

- 9-minute survey
- 5 1-minute periods of silence
- 30 second period of calls per species, 30 seconds of silence
- Black Rail – kicky-doo, grr
- Least Bittern – coo, kak or yak
- Virginia Rail – grunt, ticket, kicker
- Clapper Rail – clatter, kek, kek-burr

Basic Data Collected

- Date, location, route, surveyors
- Weather – temp., cloud cover, wind speed, precipitation
- Station, time, background noise
- Minute of call / detection
- What call
- Direction & distance
- Previous detection?
- Comments – was it a pair? Vegetation type

National Marsh Bird Monitoring Program Survey Data Sheet

Pg 1 of 2

Date: 27 April 2007 Location: HAVASU NWR Before/After

Route: Topock Gorge Temperature (°F): 60/88

Observer(s) (list all)*: JOE KAHN Wind speed (mph): 0/4

Cloud cover (%): 0/0

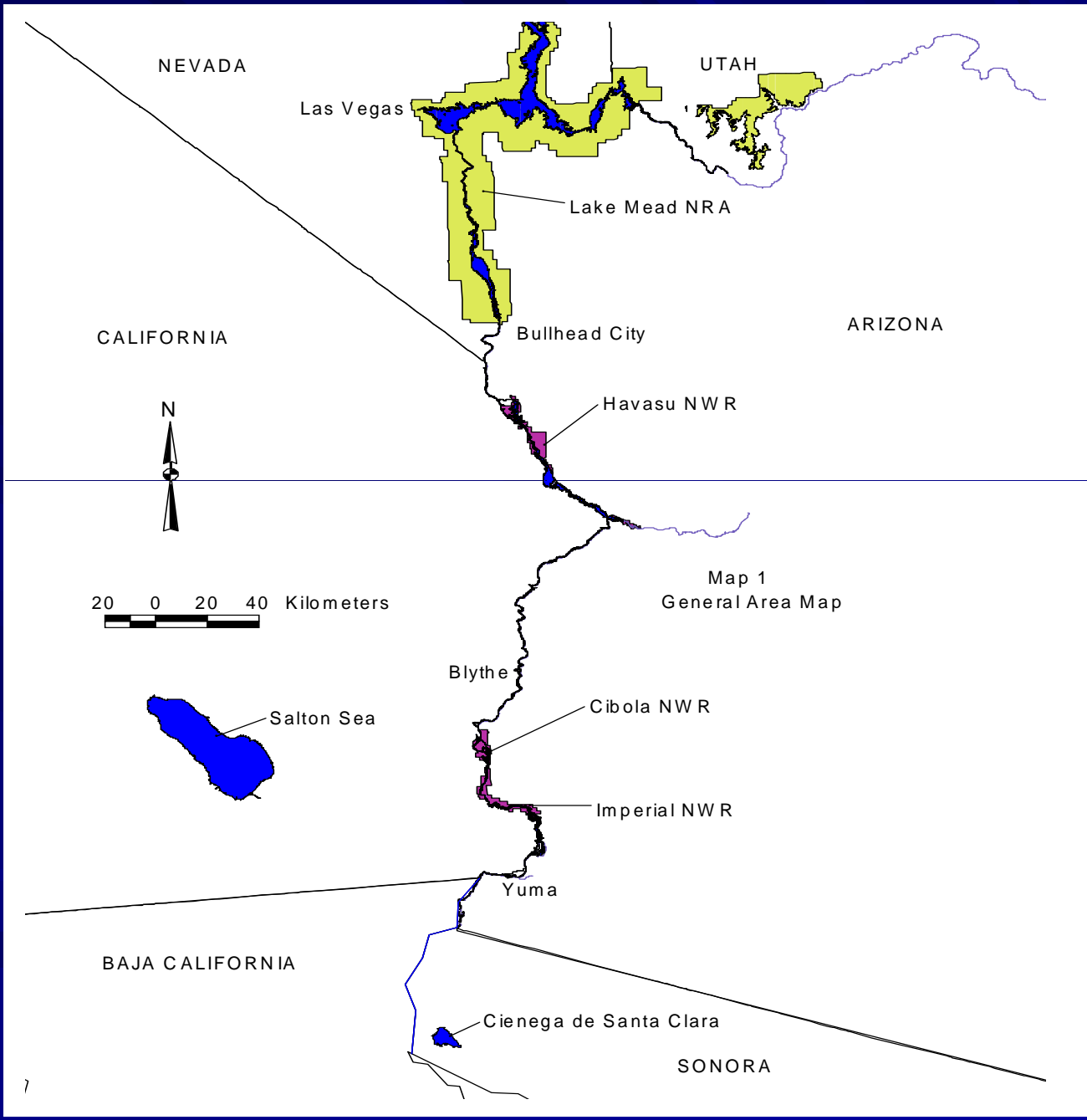
Survey replicate #: 2 Precipitation (see below): N/N

Total # during survey			
PBGR	<u>18</u>	VIRA	<u>3</u>
LEBI	<u>5</u>	CLRA	<u>16</u>
AMBI	<u>—</u>	COMO	<u>—</u>
BLRA	<u>—</u>	SORA	<u>—</u>

*list all observers in order of their contribution to the data collected

put an "S" in the appropriate column if the bird was seen, a "1" if the bird was heard, and "1S" if both heard and seen

Station#	Start Time (military)	Background noise	Species	Responded During:										Call Type(s)	Direction	Distance (meters)	Detected at a Previous Point	Comments	
				Before	Pass 0-1	Pass 1-2	Pass 2-3	Pass 3-4	Pass 4-5	BLRA 5-6	LEBI 6-7	VIRA 7-8	CLRA 8-9						After
16	0523	0	PBGR	-	-	-	1	1	-	-	-	-	-	-	hyena	⊙	130	N	
			VIRA	-	-	-	-	-	-	-	-	-	-	-	Grunt	⊙	100	N	
			PBGR	-	-	-	-	-	-	-	-	-	-	-	hyena	⊙	65	N	
17	0546	0	PBGR	-	-	-	-	-	-	-	1	-	-	-	hyena	⊙	30	N	pair Bulrush
			PBGR	-	-	-	-	-	-	-	-	-	-	p-hyena	⊙	30	N		
			LEBI	-	-	-	-	-	-	-	-	-	-	COO	⊙	45	N		
			CLRA	-	-	-	-	-	-	-	-	-	1	-	p-CTR	⊙	110	N	pair
			CLRA	-	-	-	-	-	-	-	-	-	-	p-CTR	⊙	116	N		
			CLRA	-	-	-	-	-	-	-	-	-	-	p-CTR	⊙	80	N	pair	
			CLRA	-	-	-	-	-	-	-	-	-	-	p-CTR	⊙	80	N		
			CLRA	-	-	-	-	-	-	-	-	-	1	1	KEK	⊙	40	N	
			CLRA	-	-	-	-	-	-	-	-	-	-	1	Kek-Burr	⊙	30	N	
18	0621	0	CLRA	1	1	1	1	1	1	1	1	1	1	1	CTR	⊙	250	N	Heard when driving by in boat
			PBGR	-	-	1	-	-	-	-	-	-	-	-	KEK	⊙	65	N	Bulrush
			LEBI	-	-	-	-	-	-	-	-	-	1	-	hyena	⊙	20	N	
			PBGR	-	-	-	-	-	-	-	-	-	-	1	Kak	⊙	270	N	Across river
			PBGR	-	-	-	-	-	-	-	-	-	-	1	p-hyena	⊙	100	N	pair, bulrush





Big Bend Conservation Area Survey Results

- March 27
- 2 pied-billed grebe
- April 23
- 1 least bittern, 1 Virginia rail, 1 sora & 2 pied-billed grebe
- May 15
- 1 Virginia rail & (1 Bell's Vireo)



Laguna Burn Site @ Imperial Dam Survey Results

- March 25

- 3 least bittern, 6 sora & 1 pied-billed grebe

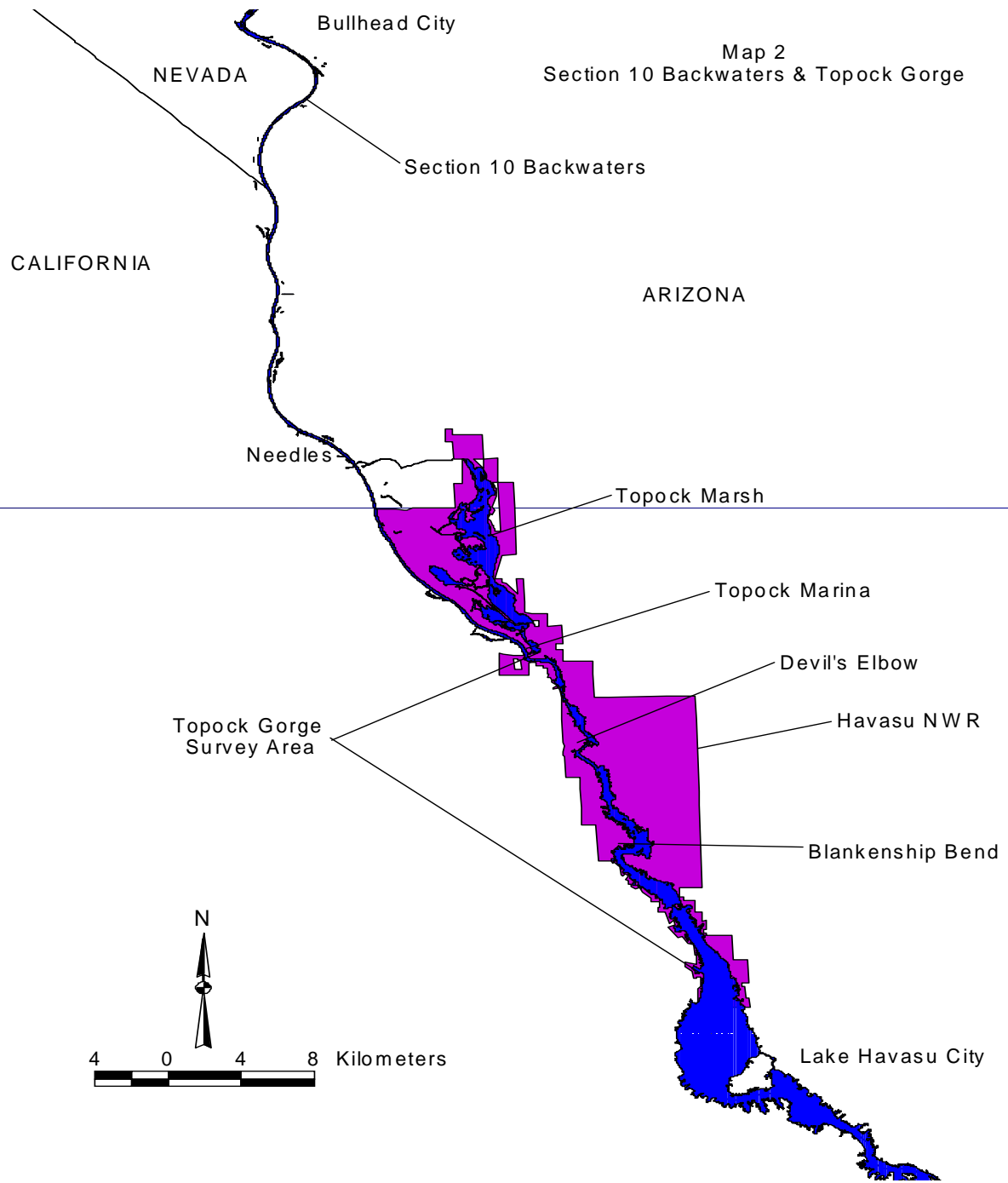
- April 21

- 1 least bittern, 6 sora & 2 pied-billed grebe

- May 13

- 1 common moorhen

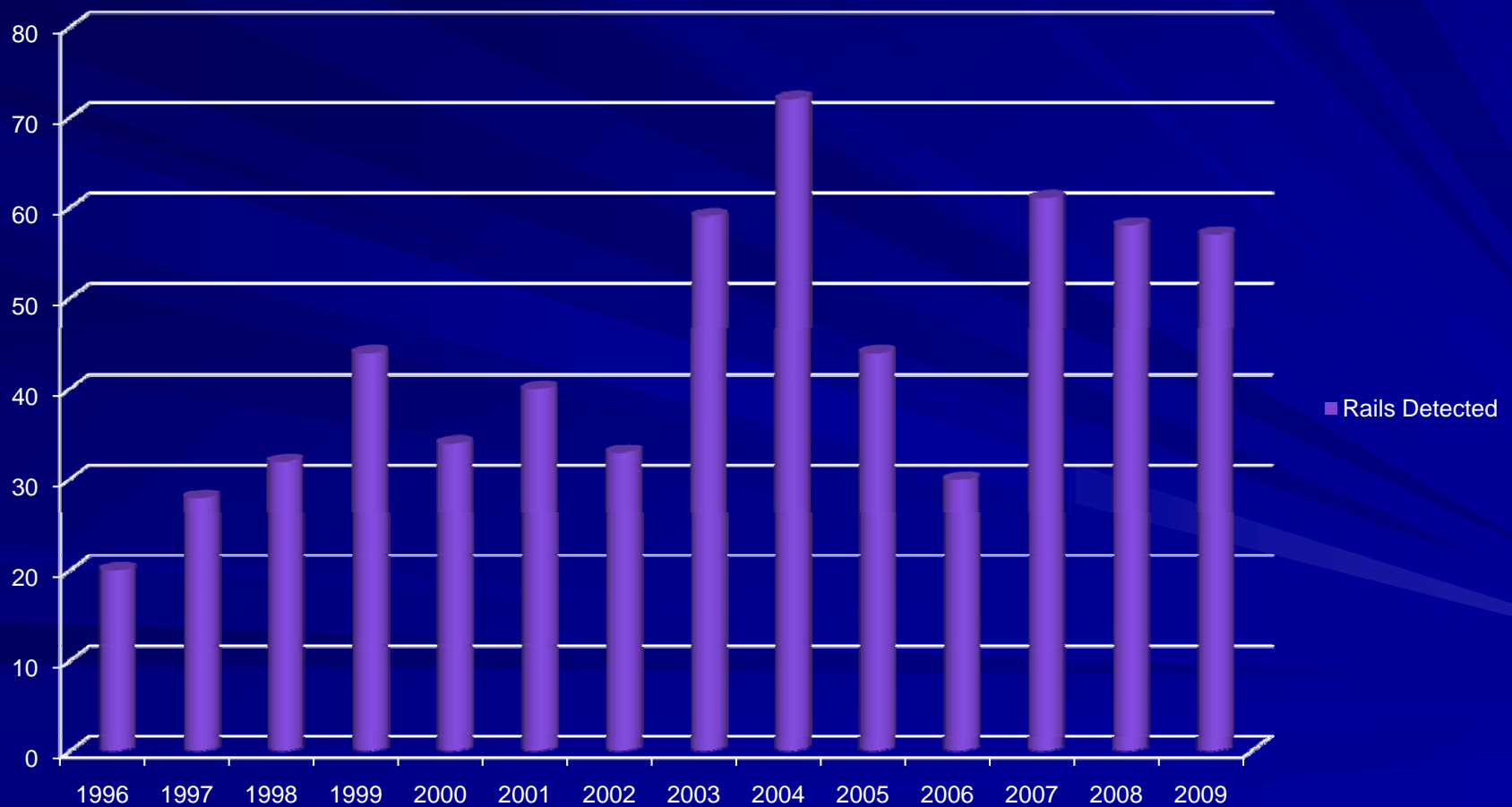
Map 2
Section 10 Backwaters & Topock Gorge





Yuma Clapper Rail Detections Topock Gorge 1996-2009

Rails Detected



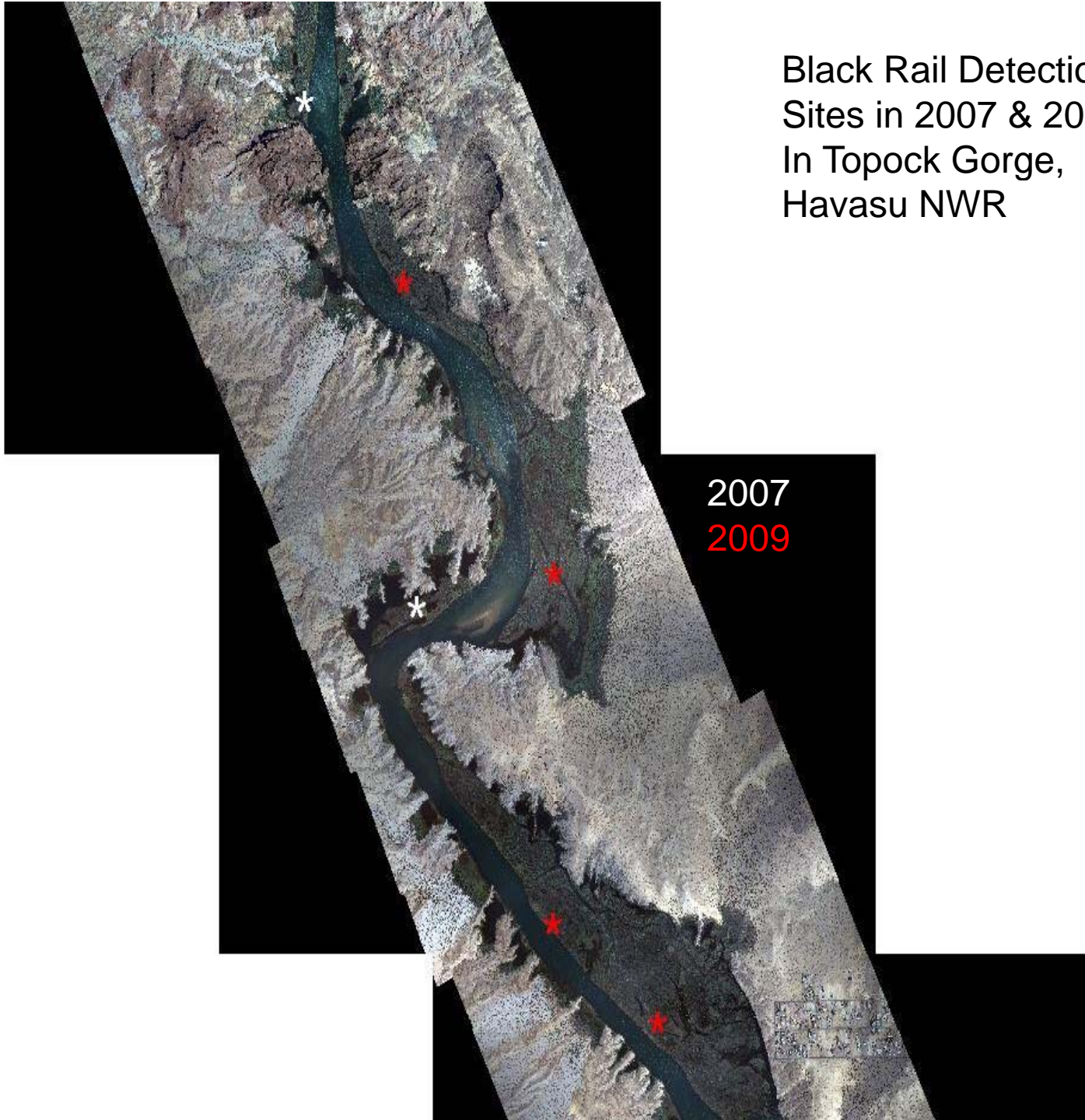
Topock Gorge Survey Results

March 17-20 – 35 CLRA, 10 LEBI, 1 BLRA,
44 VIRA, 5 SORA, 40 PBGR, 2 COMO

April 14-17 – 36 CLRA, 15 LEBI, 3 BLRA,
13 VIRA, 6 SORA, 70 PBGR, 8 COMO

May 19-22 – 57 CLRA, 32 LEBI, 1 BLRA,
21 VIRA, 1 SORA, 85 PBGR, 10 COMO

Black Rail Detection
Sites in 2007 & 2009
In Topock Gorge,
Havasu NWR



2007
2009



4. 12. 2000