

Survey and Habitat Requirements
for MacNeill's Sootywing

Bill Wiesenborn
USBR Boulder City

Gordon Pratt
UC Riverside















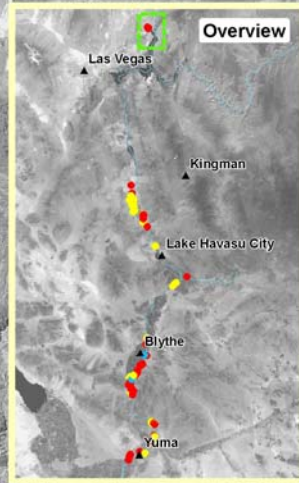


Sootywing Locations

Overton


overton 5
overton 2
overton 1
overton 4
overton 3

Map 1 of 8



Sootywing Status

- Present
- Absent
- Not Surveyed

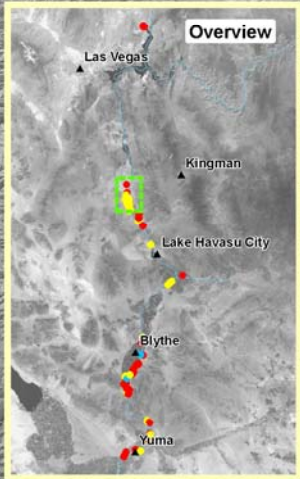


1:125,000



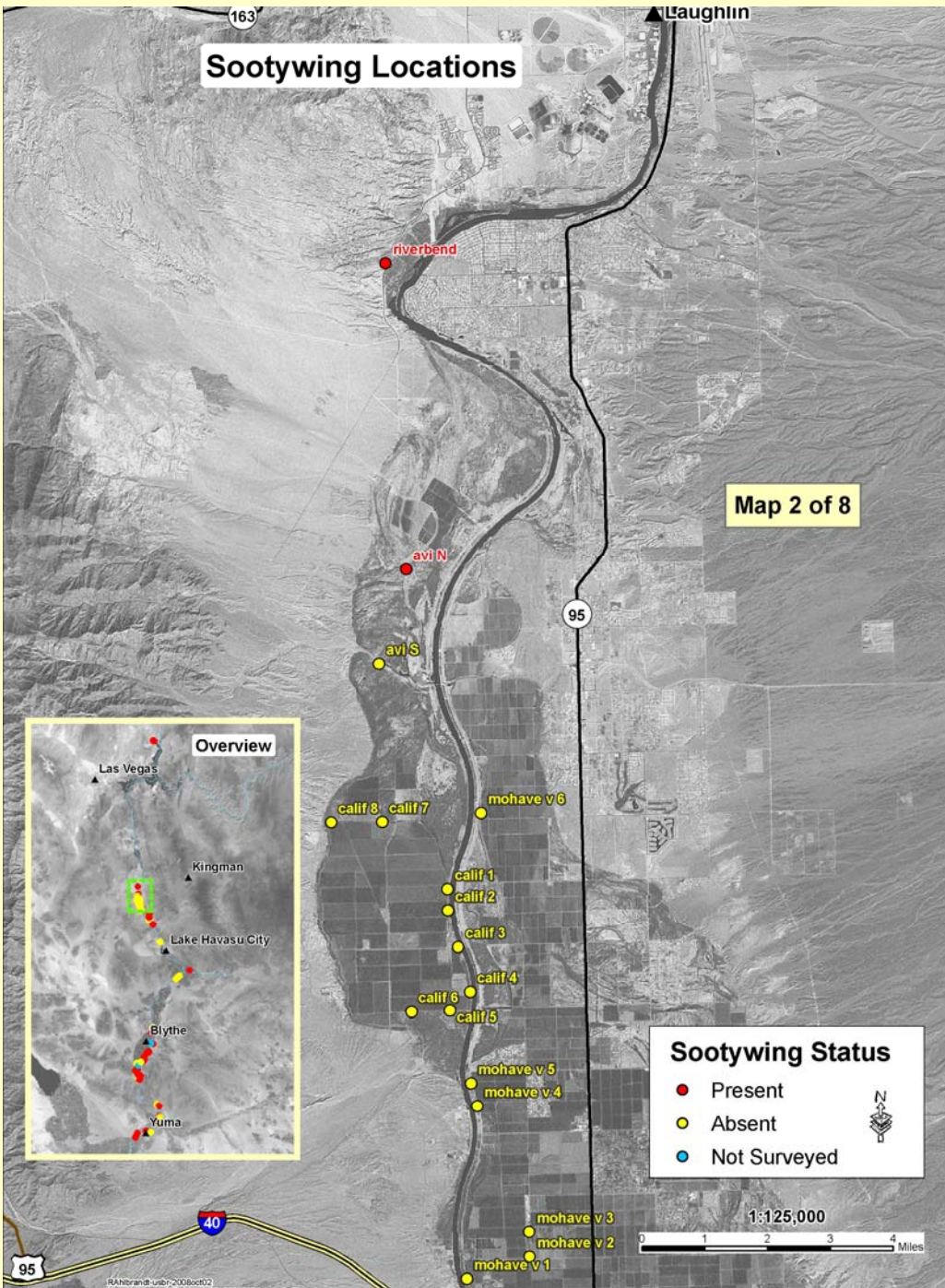
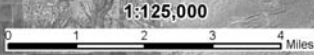

Sootywing Locations

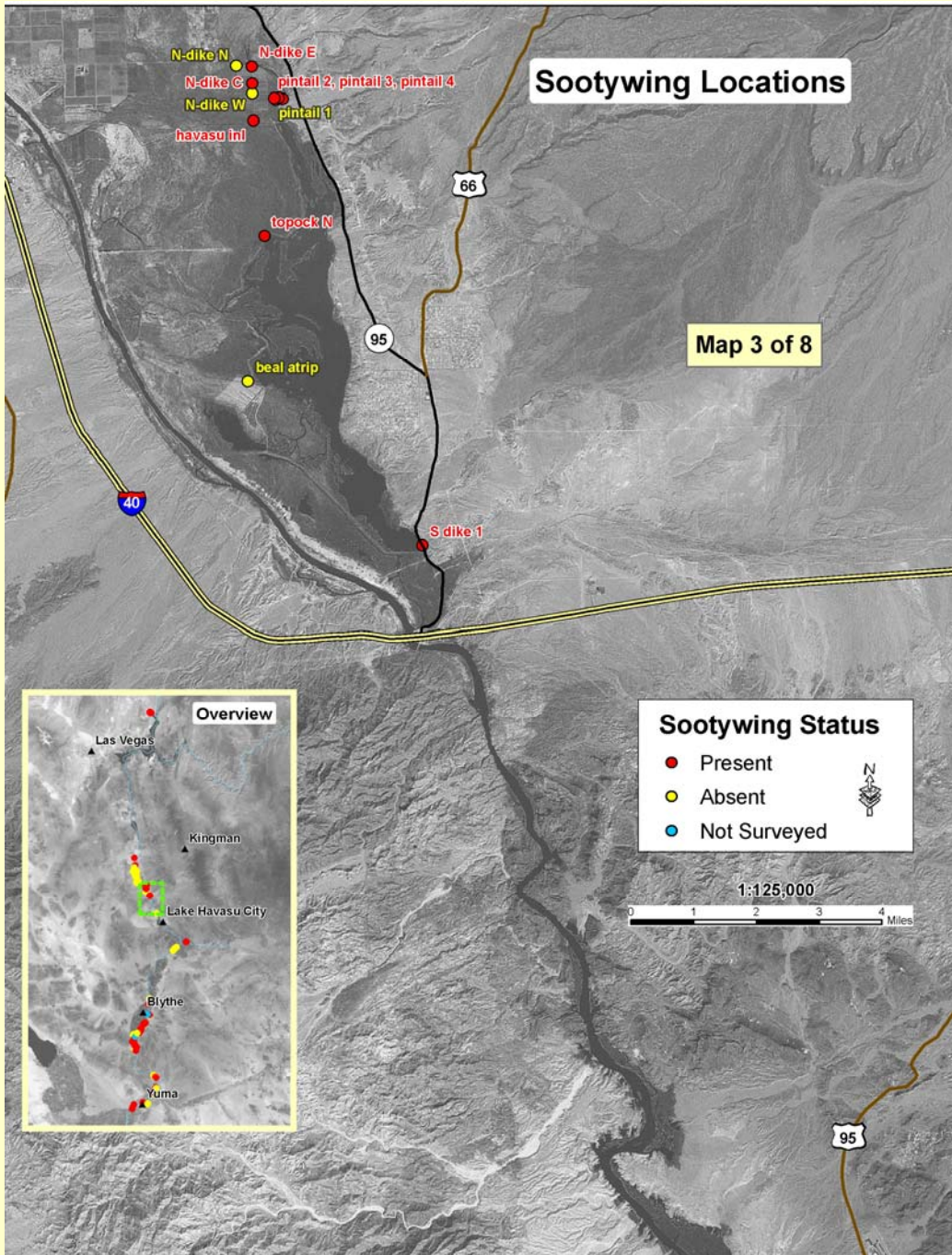
Map 2 of 8



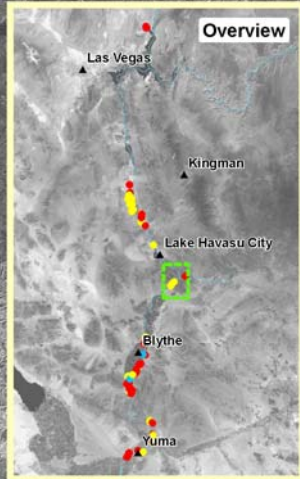
Sootywing Status

- Present
- Absent
- Not Surveyed

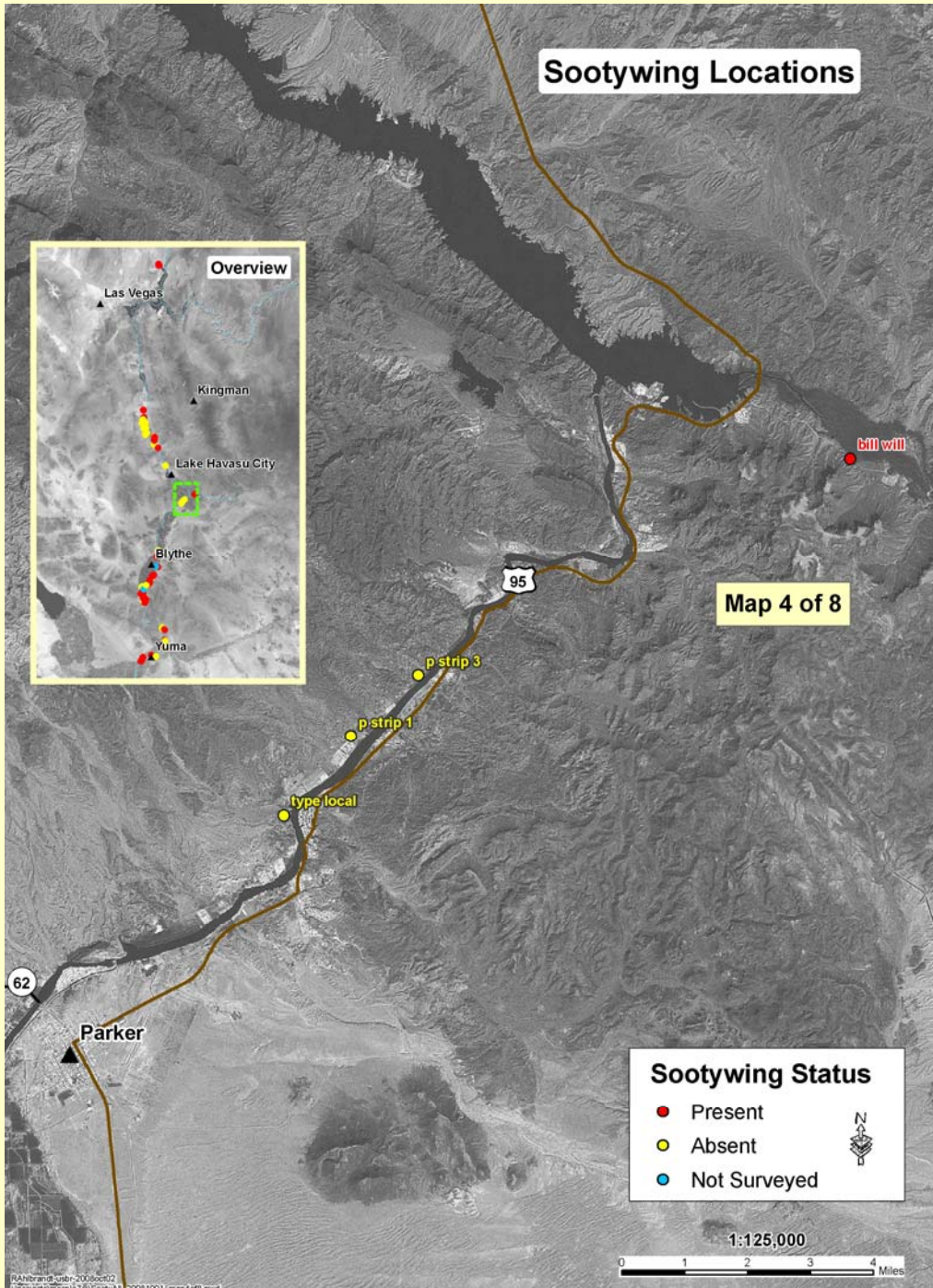




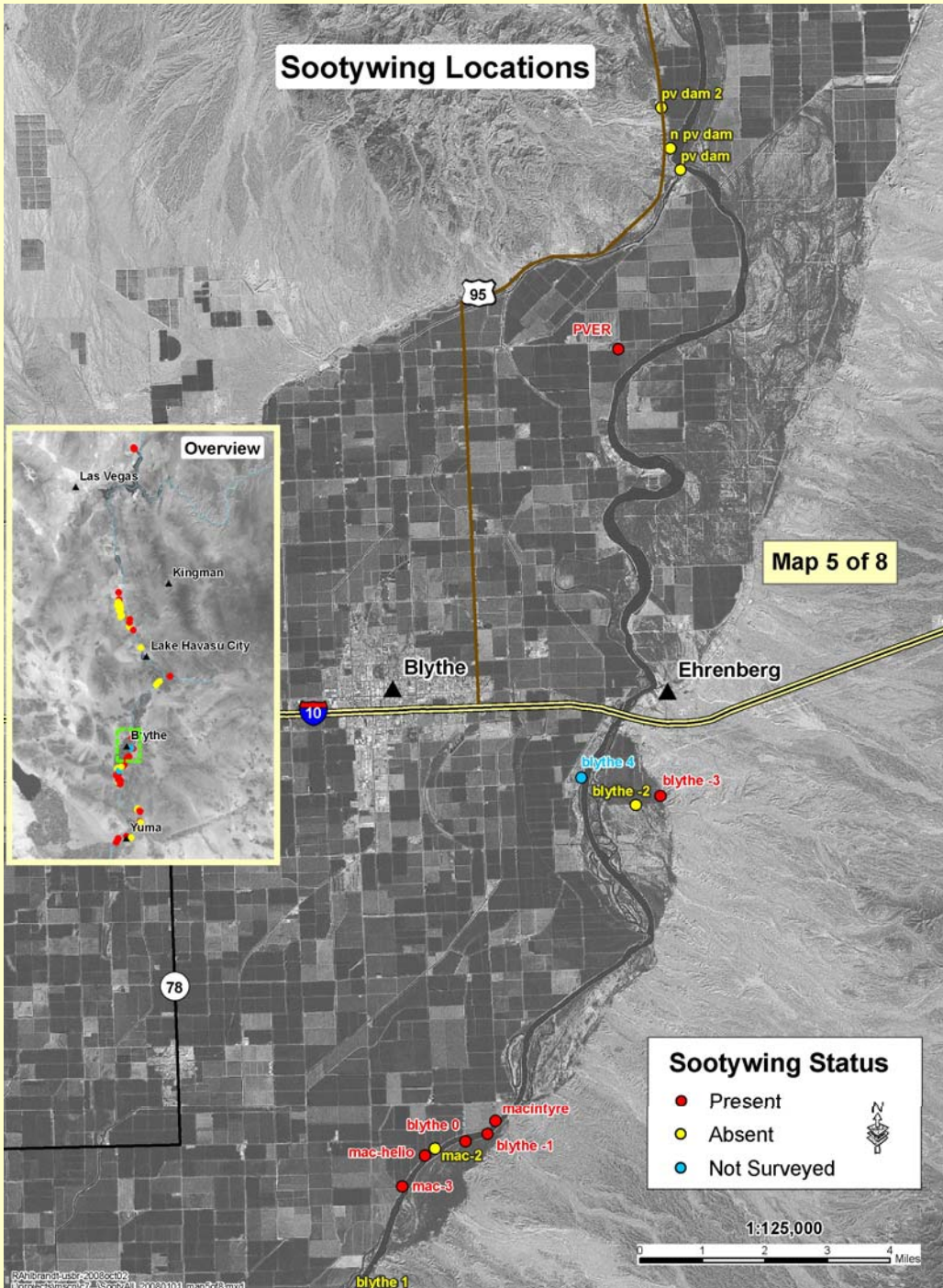
Sootywing Locations



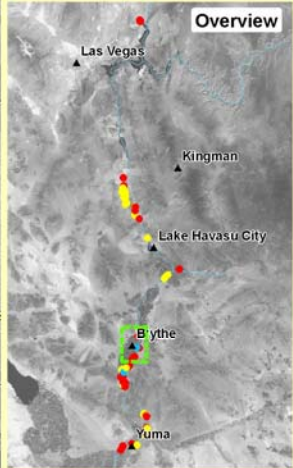
Map 4 of 8



Sootywing Locations




Overview



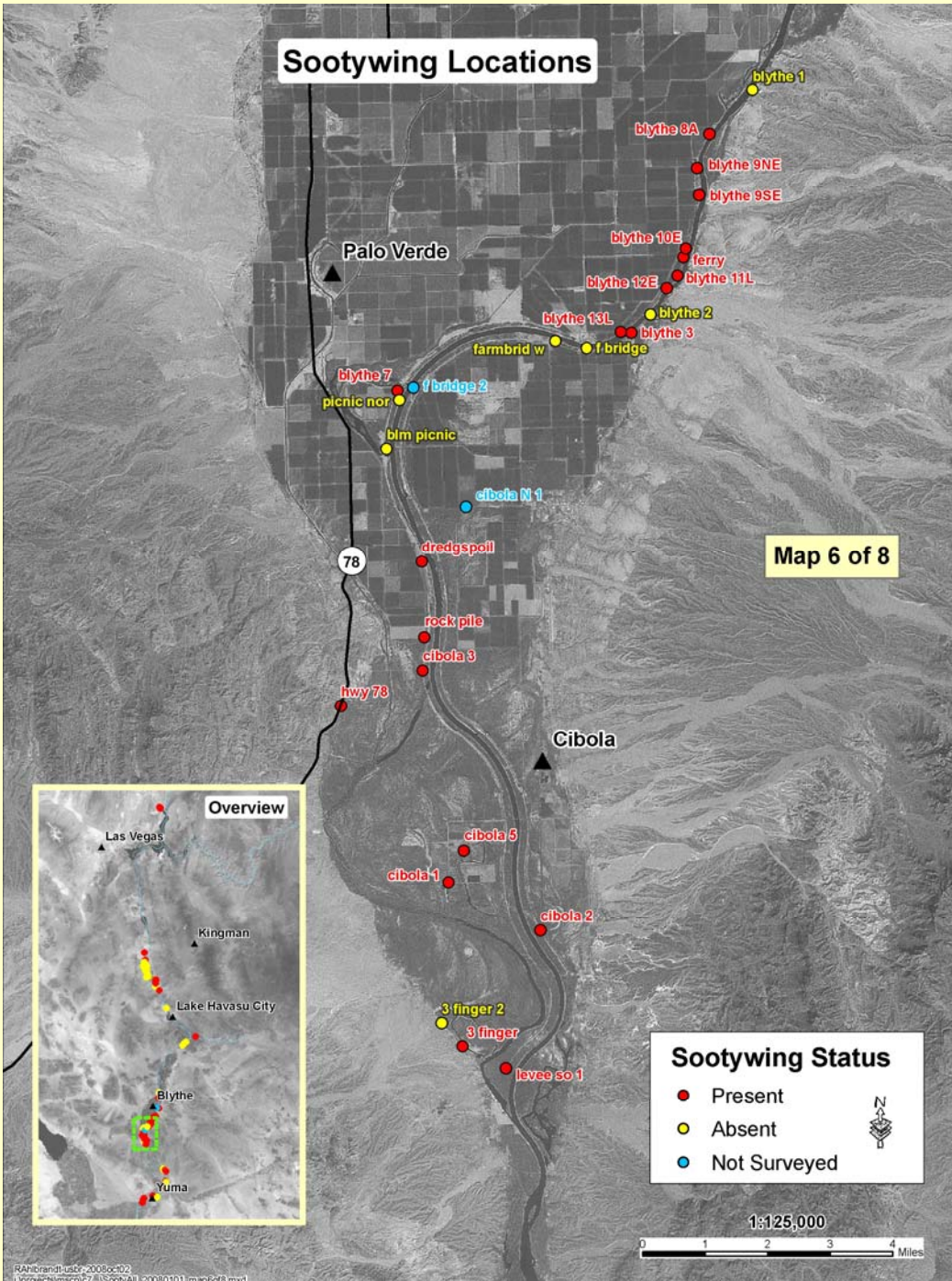
Map 5 of 8

Sootywing Status

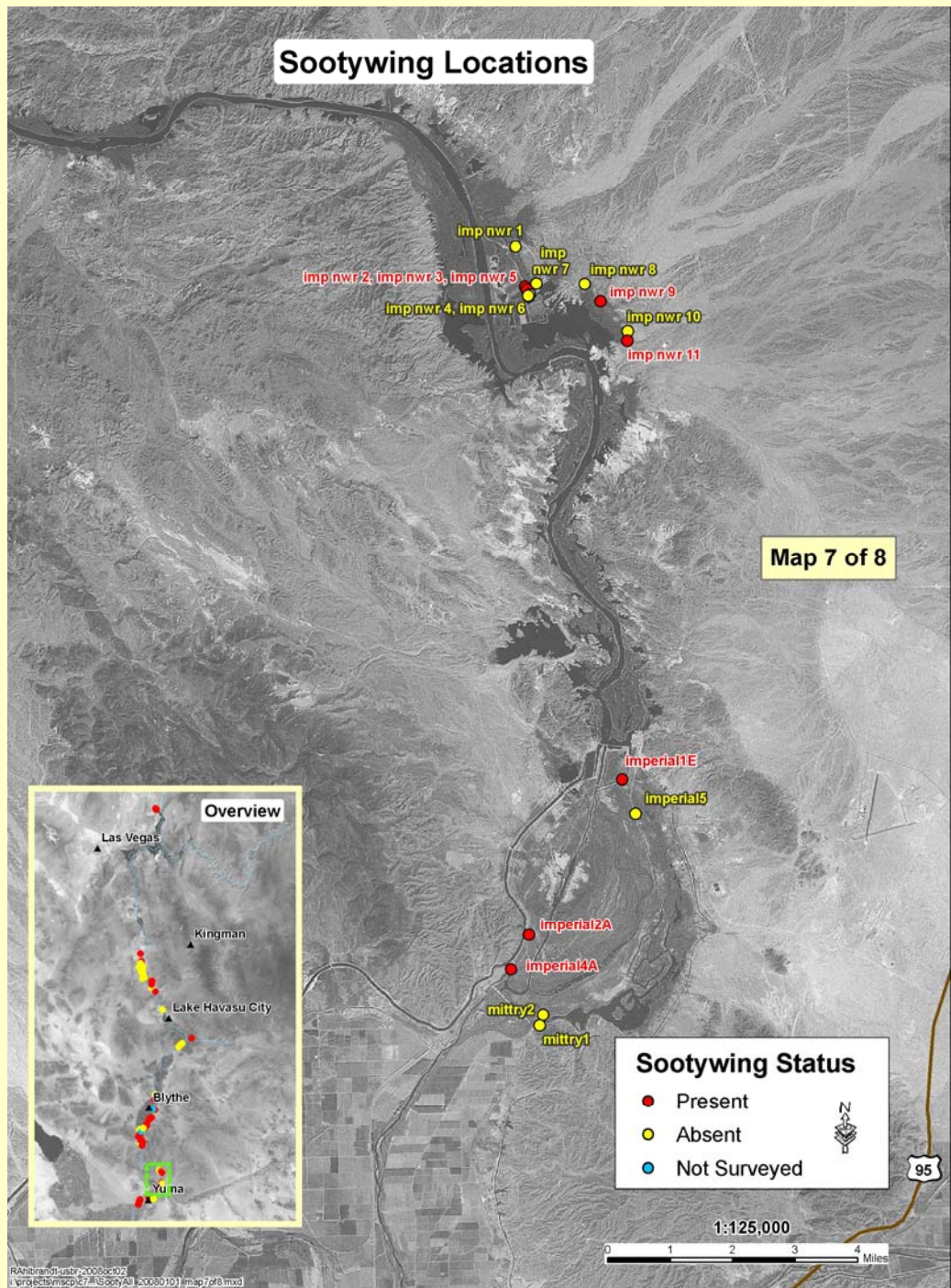
- Present
- Absent
- Not Surveyed



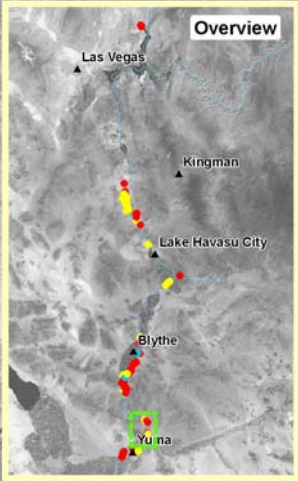
Sootywing Locations



Sootywing Locations




Map 7 of 8

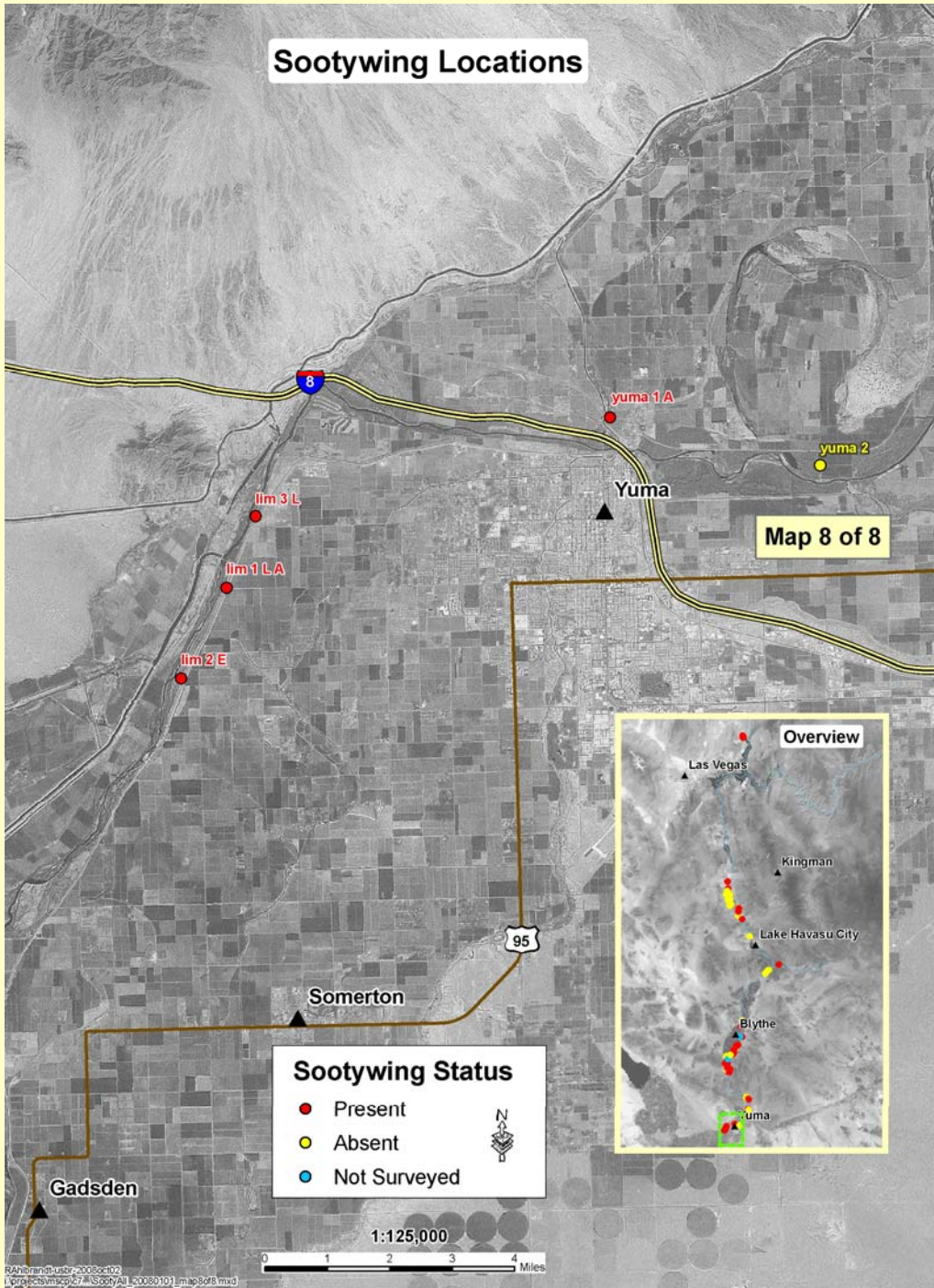


Sootywing Status

- Present
- Absent
- Not Surveyed

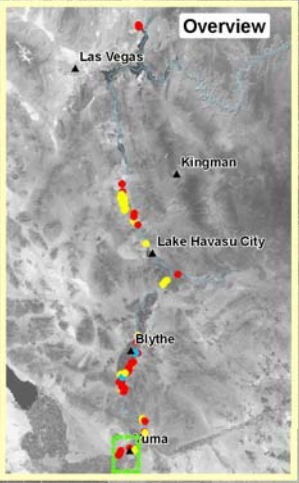


Sootywing Locations



Map 8 of 8

Overview

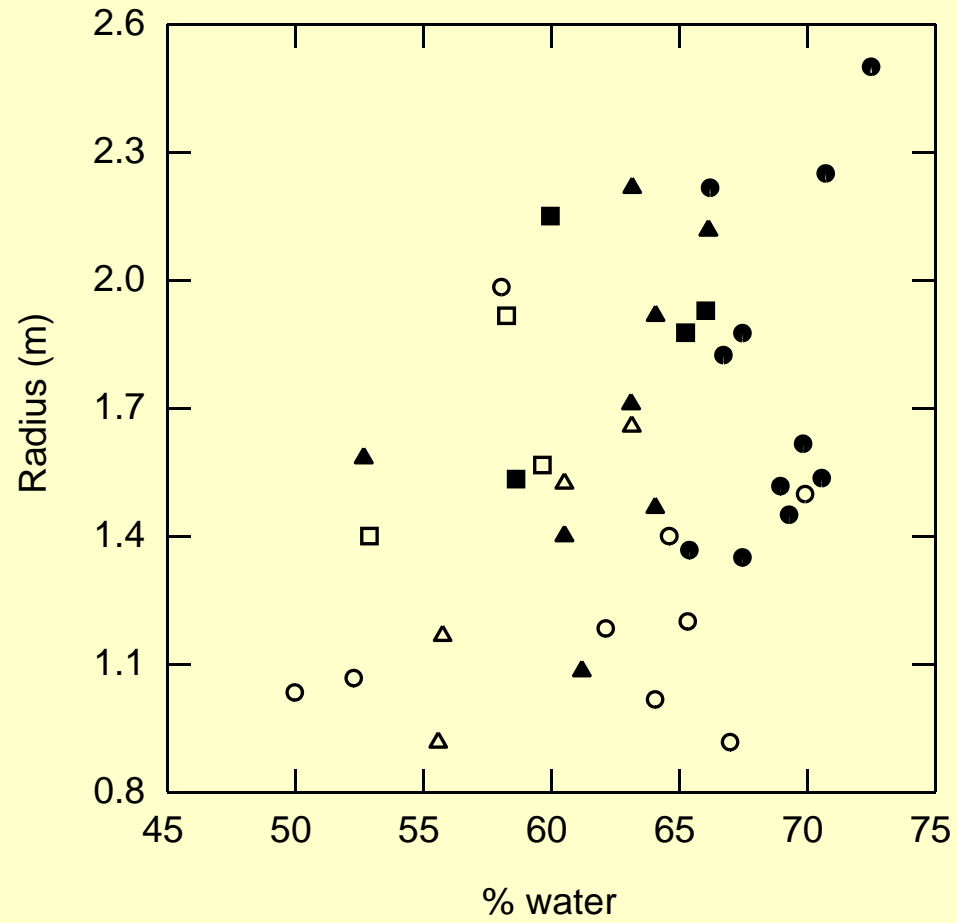


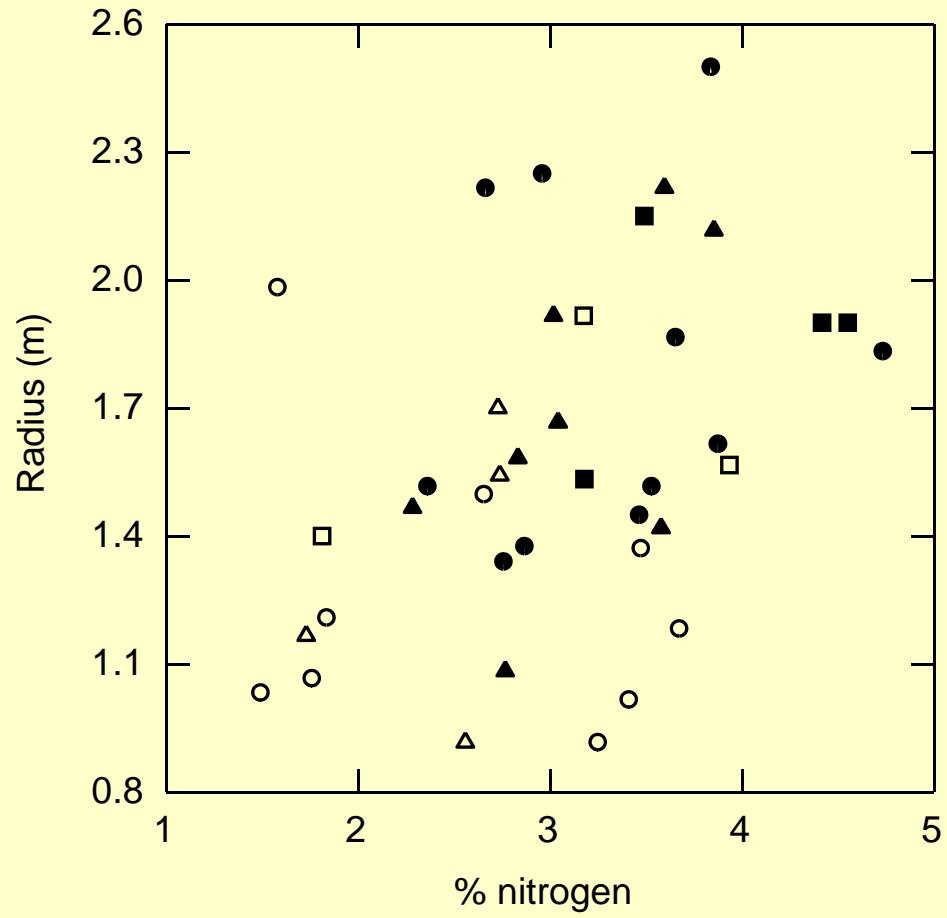
Sootywing Status

- Present
- Absent
- Not Surveyed

1:125,000







Flowers Visited by MacNeill's Sootywing

Heliotrope – *Heliotropium curassavicum* (Boraginaceae) [white flowers]

Sea purslane – *Sesuvium verrucosum* (Aizoaceae) [pink flowers]

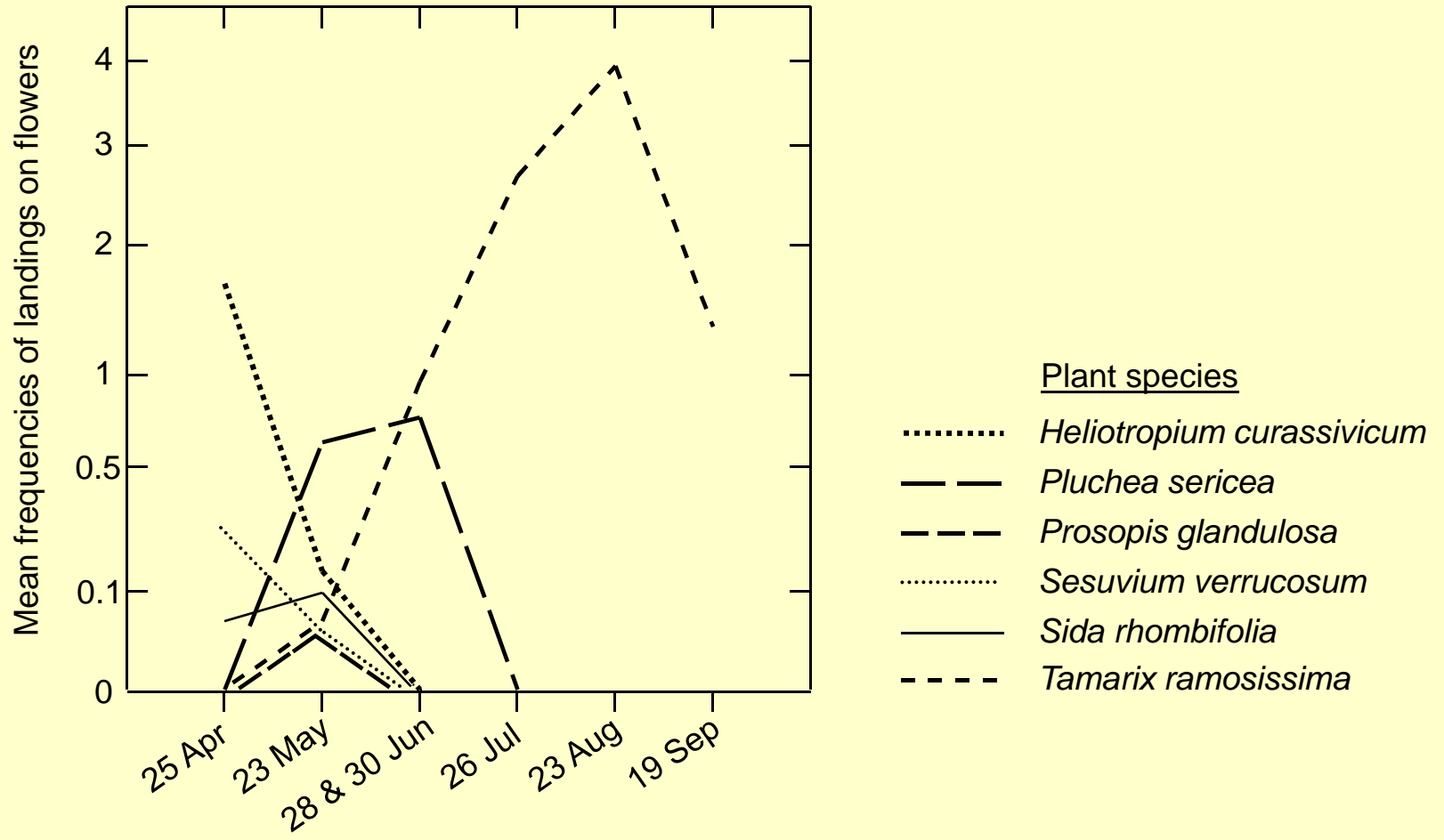
Arrowweed – *Pluchea sericea* (Asteraceae) [purple flowers]

Alkali mallow – *Sida rhombifolia* (Malvaceae) [pale yellow flowers]

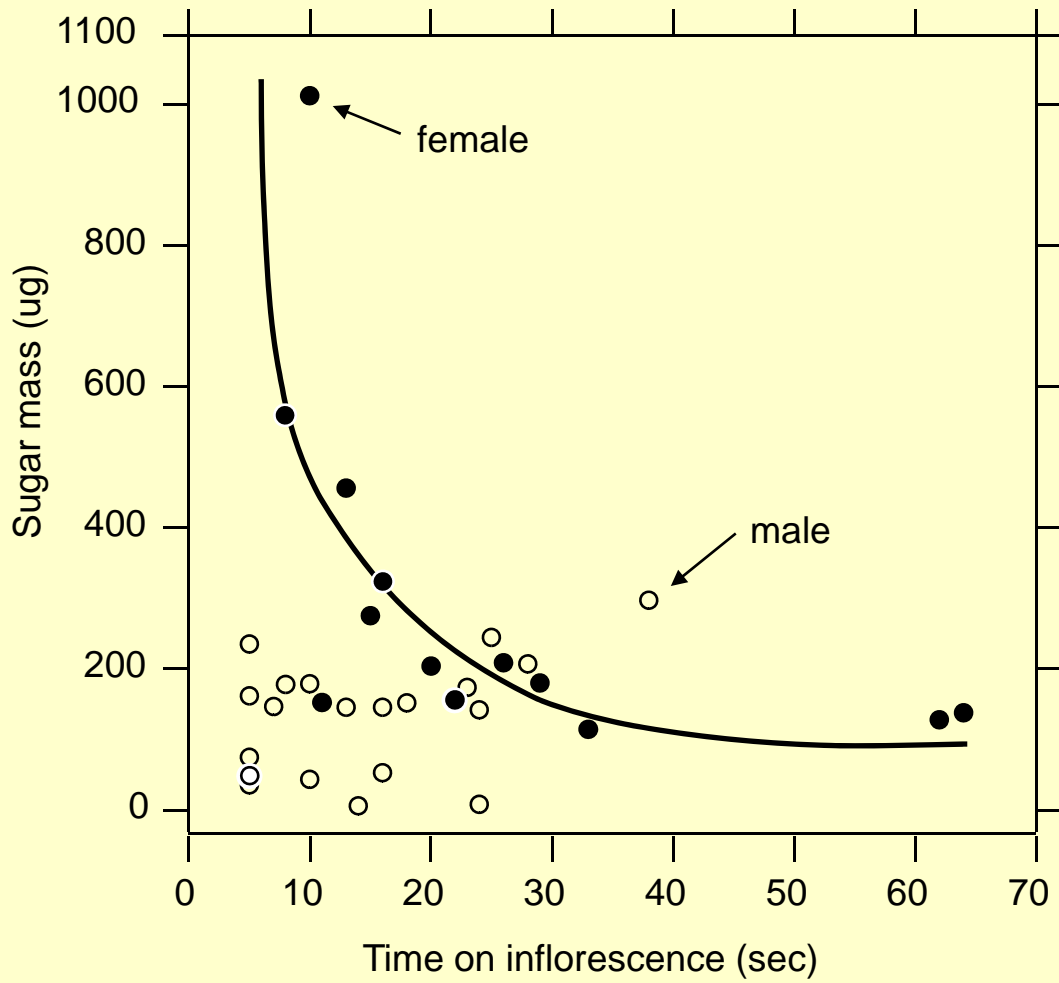
Honey mesquite – *Prosopis glandulosa* (Fabaceae) [yellow flowers]

Tamarisk – *Tamarix ramossissima* (Tamaricaceae) [white to pink flowers]

Common purslane – *Portulaca oleracea* (Portulacaceae) [yellow flowers]









Recommendations for Creating Sootywing Habitat

- 1) Plant native rather than cultivated *Atriplex lentiformis*
- 2) Maintain plant water content > 64% during April 1 - November 30
- 3) Maintain leaf nitrogen content > 3.2 %
- 4) Minimum host-plant radius or height = 1.6 m
- 5) Establish native-plant nectar sources

eg. Heliotrope, *Heliotropium curassavicum*

Sea purslane, *Sesuvium verrucosum*

- 6) Sootywings should colonize new habitat on their own