



Lower Colorado River Multi-Species Conservation Program

Balancing Resource Use and Conservation

Backwater Site Assessments and Conceptual Habitat Planning

A case study of Secret & Headquarters Lakes

Nathan Lenon (Reclamation)

Melissa Stamp (Bio-West)



A Stakeholder-Driven Evaluation and Planning Effort

- **Fish and Wildlife Service**
 - Imperial NWR (land manager)
 - Ecological Service (ESA Section 7)
 - Albuquerque Regional Office (water rights)
- **Reclamation Offices**
 - LCR MSCP (project proponent)
 - BCOO (water accounting)
 - YAO (river operations & maintenance)
 - Environmental Compliance
 - Public Affairs
- **Arizona Game and Fish Dept (recreational use)**

RECLAMATION

Major Planning Milestones

✓ *indicates completed task*

- **Design Criteria - February 15, 2008** ✓
- **Initial List of Alternatives - March 17, 2008** ✓
- **Revised List of Alternatives - April 30, 2008** ✓
- **Preliminary Conceptual Alternatives - June 1, 2008** ✓
 - include comparisons of relative cost/habitat benefit
- **Revised Conceptual Design** - ✓
 - single/best option at each site
 - includes preliminary cost estimate
- **Draft Final Report posted for public comments - February 3, 2009**
- **LCR MSCP Technical Work Group Review - February 18, 2009**

RECLAMATION

Study Sites (Imperial NWR)

- **Secret Lake (A62.3)**
 - 11.2 acres
 - Connected backwater
 - Excellent rating
 - Moderately remote location
 - Currently open to public
- **Headquarters Lake (A)**
 - 7.3 acres
 - Connected backwater
 - High rating
 - Easily accessible
 - Currently closed to public

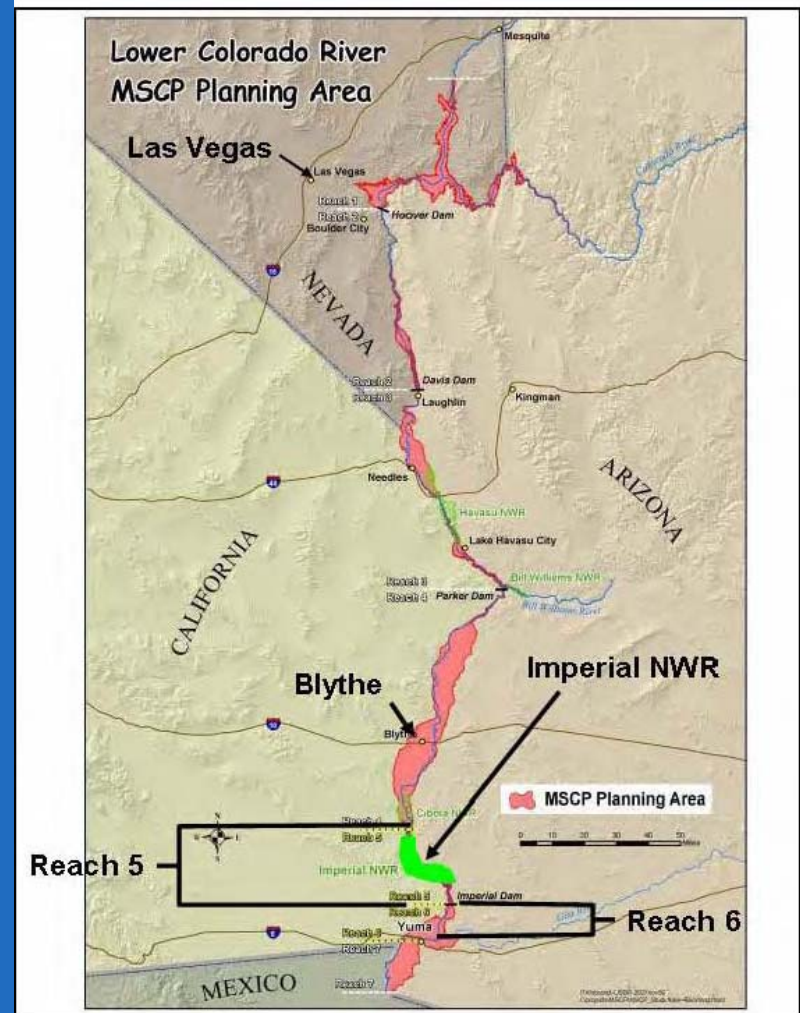


Figure 12. General location of Reach 5.

Design Criteria

- **Primary Biological Criteria (fisheries)**
 - Water quality
 - Habitat/cover features and complexity
 - Absence or minimal presence of non-native fish
 - Protection of existing habitat quality
- **Secondary Biological Criteria (marsh/riparian)**
 - Shoreline complexity/slope for marsh establishment
 - Riparian vegetation fringe for terrestrial habitat

Design Criteria (cont'd)

- **Logistical & Regulatory Criteria**
 - Protection from overbank flooding
 - Site access considerations
 - Site closure to fishing and boating
 - Minimize import/export cuts & fills
 - No net loss of wetlands
 - Avoid impacts to known cultural artifacts

Secret Lake Conceptual Design

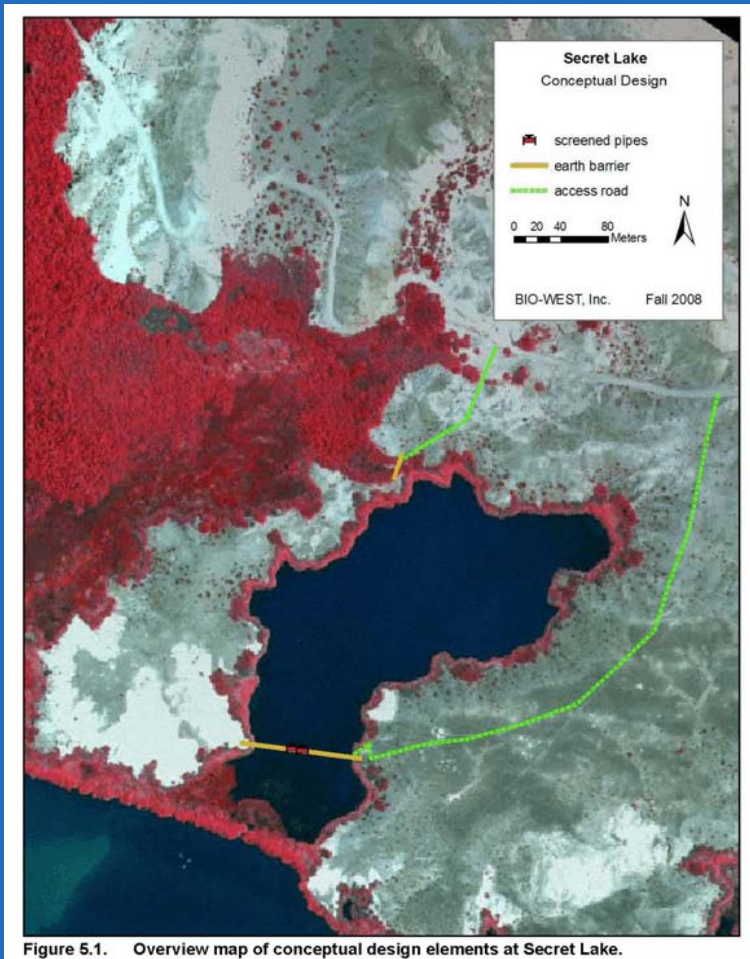


Figure 5.1. Overview map of conceptual design elements at Secret Lake.

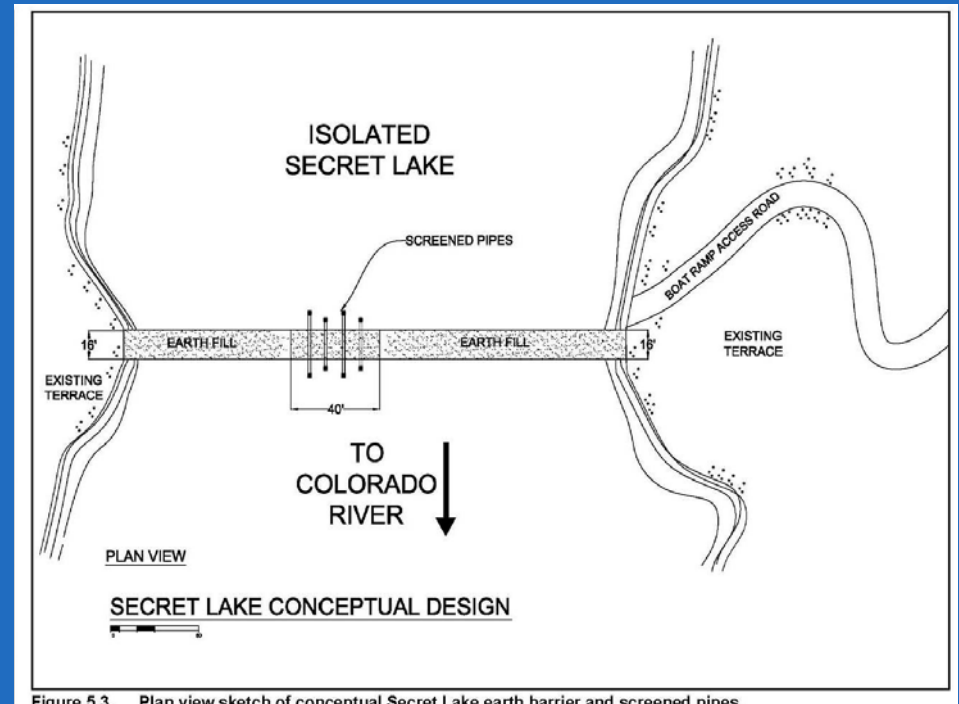


Figure 5.3. Plan view sketch of conceptual Secret Lake earth barrier and screened pipes.

RECLAMATION

Headquarters Lake Conceptual Design

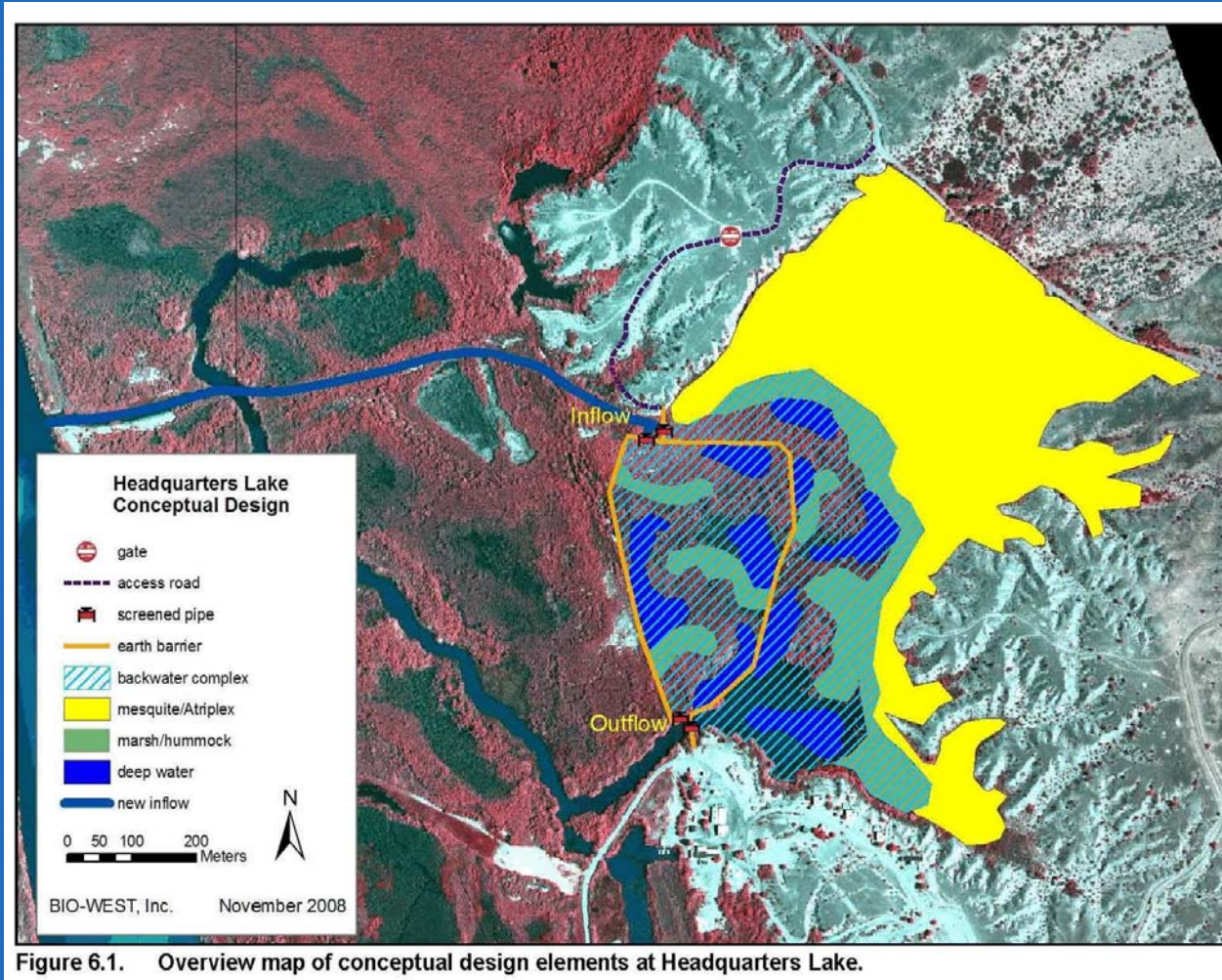


Figure 6.1. Overview map of conceptual design elements at Headquarters Lake.

RECLAMATION



All Reports Posted to MSCP website

www.lcrmscp.gov