

RECLAMATION

Managing Water in the West

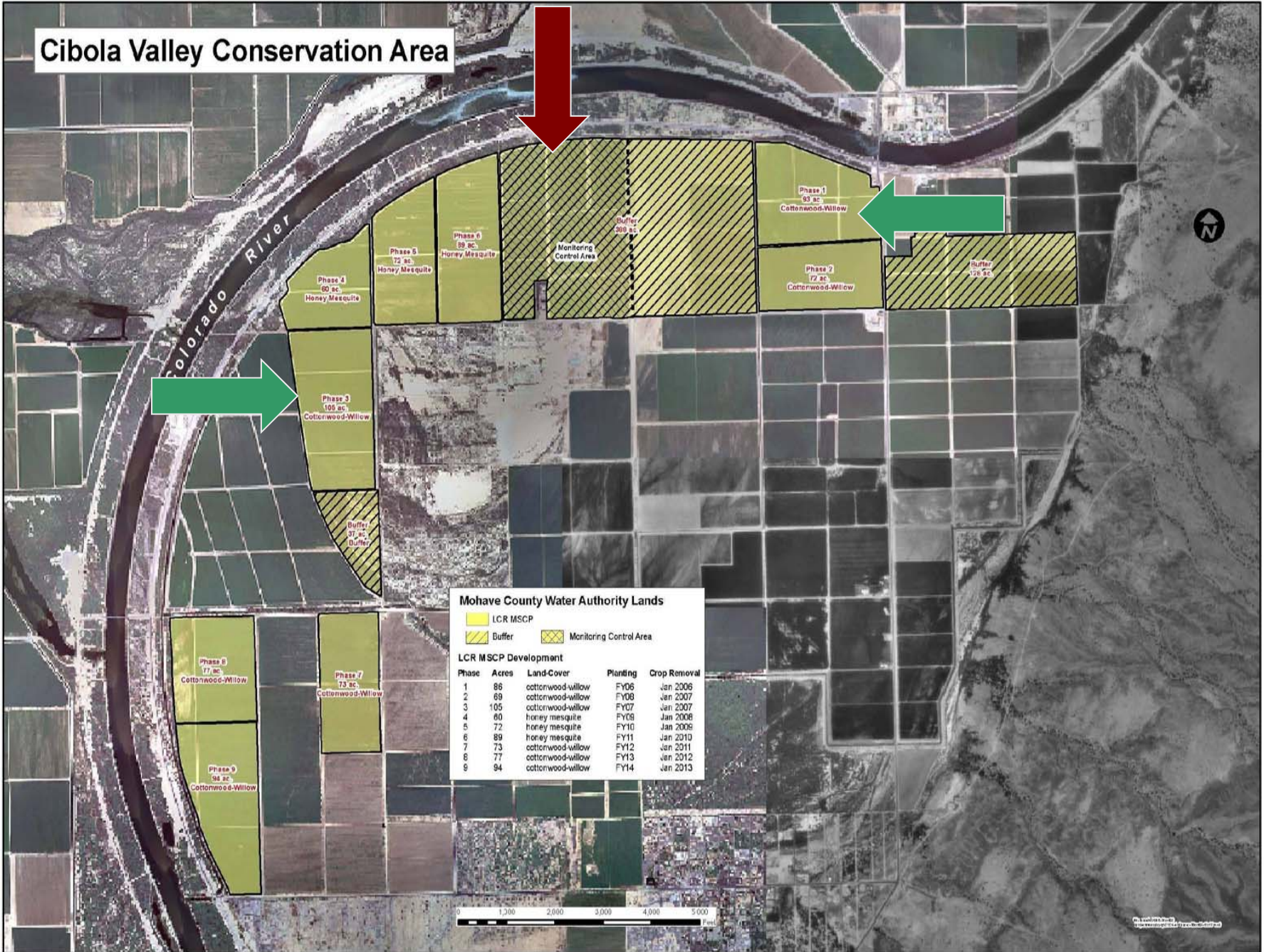
CIBOLA VALLEY CONSERVATION AREA MONITORING




U.S. Department of the Interior
Bureau of Reclamation



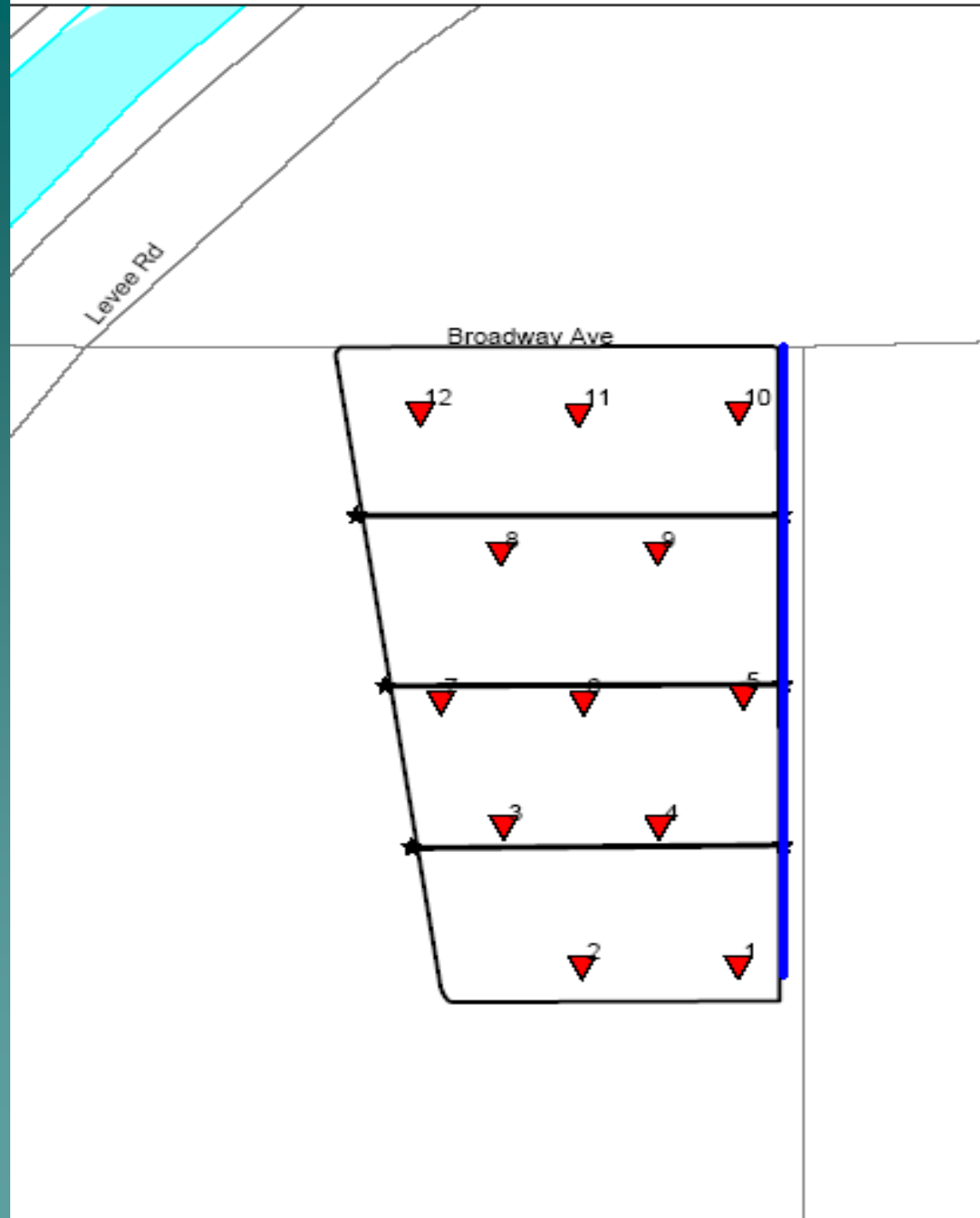
Cibola Valley Conservation Area



Resources Monitored

- ◆ Soils
 - ◆ Vegetation
 - ◆ Avian
 - ◆ Bats
 - ◆ Small Mammals
- 
- A stylized silhouette of a mountain range in a darker shade of teal, located in the bottom right corner of the slide.

Soils Phase 3



Vegetation

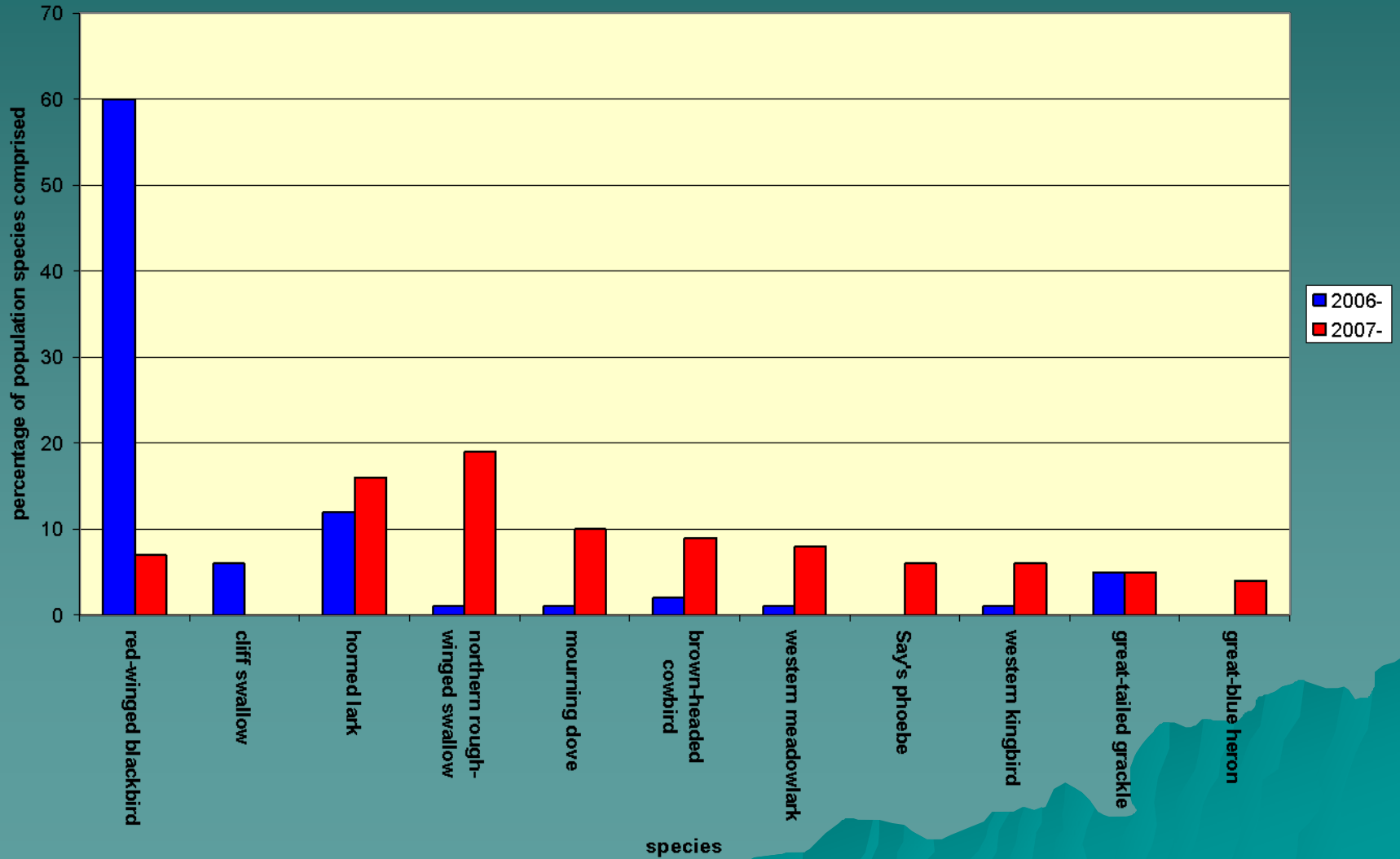
◆ Phase 1 Field C

- Average Total Height 5.9m (19.3 ft)
- Average DBH 4.6cm (1.8 in)
- Average Stem Density 4,244 stems /ha
(1,717 stems /ac)
- Average Canopy Cover 85%

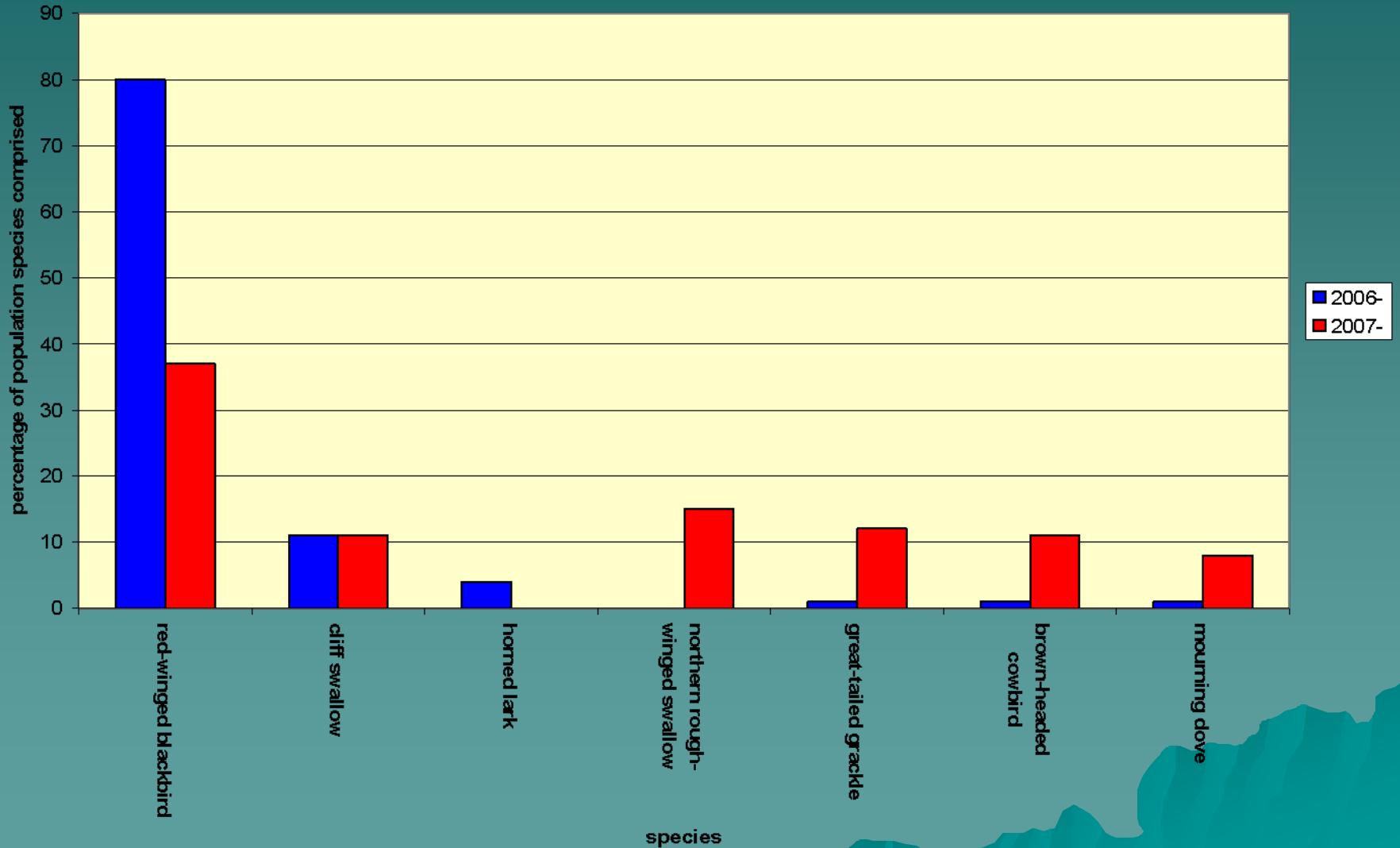
◆ Phase 3 Field 4

- Average Total Height 4.0 m (13 ft)
- Average DBH 1.6 cm (0.6 in)
- Average Stem Density 6,621 stems/ha
(2,679 stems /ac)
- Average Canopy cover 68%

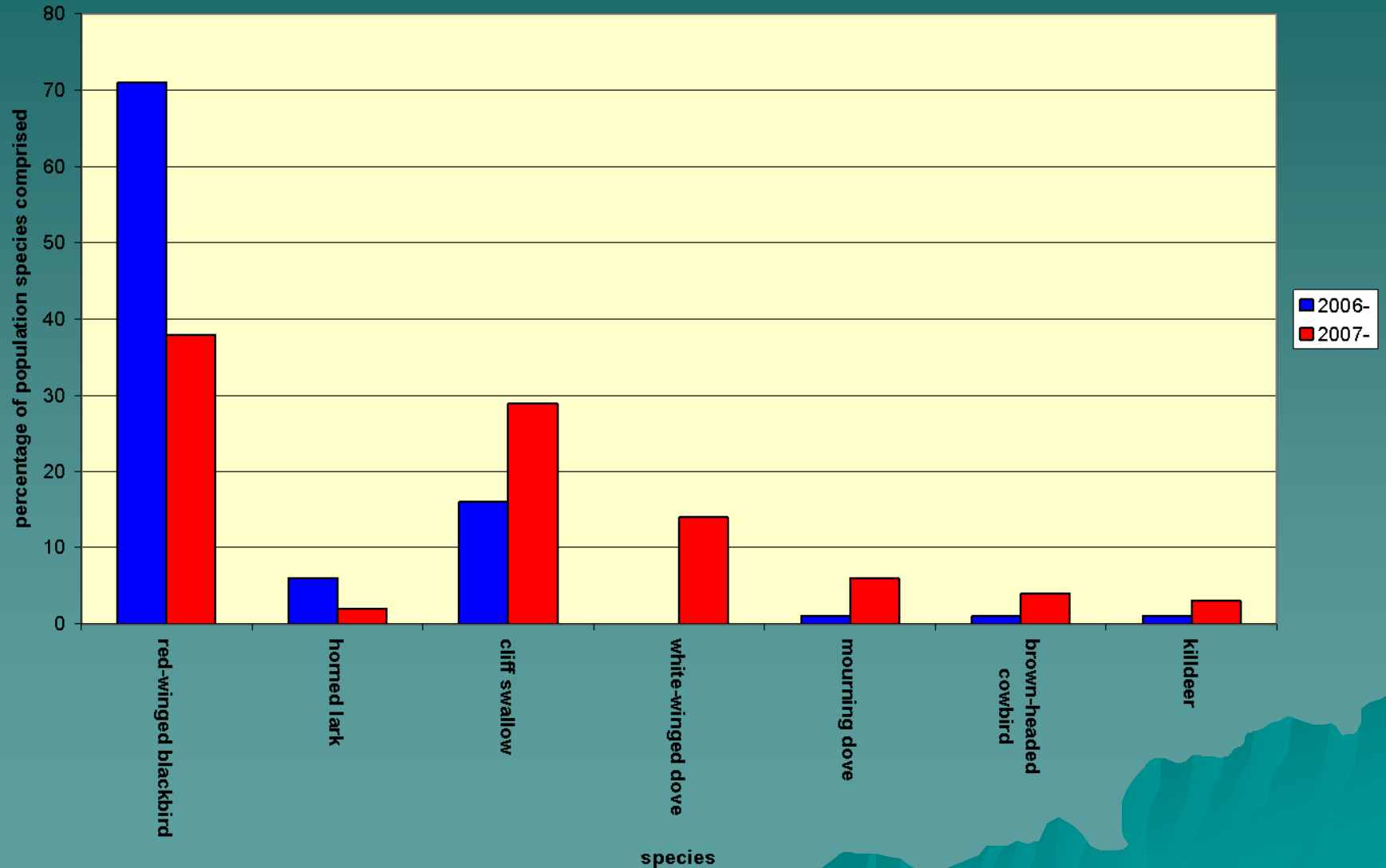
Avian Point Counts Control Area



Avian Point Counts Phase 1



Avian Point Counts Phase 3



Avian Area Searches

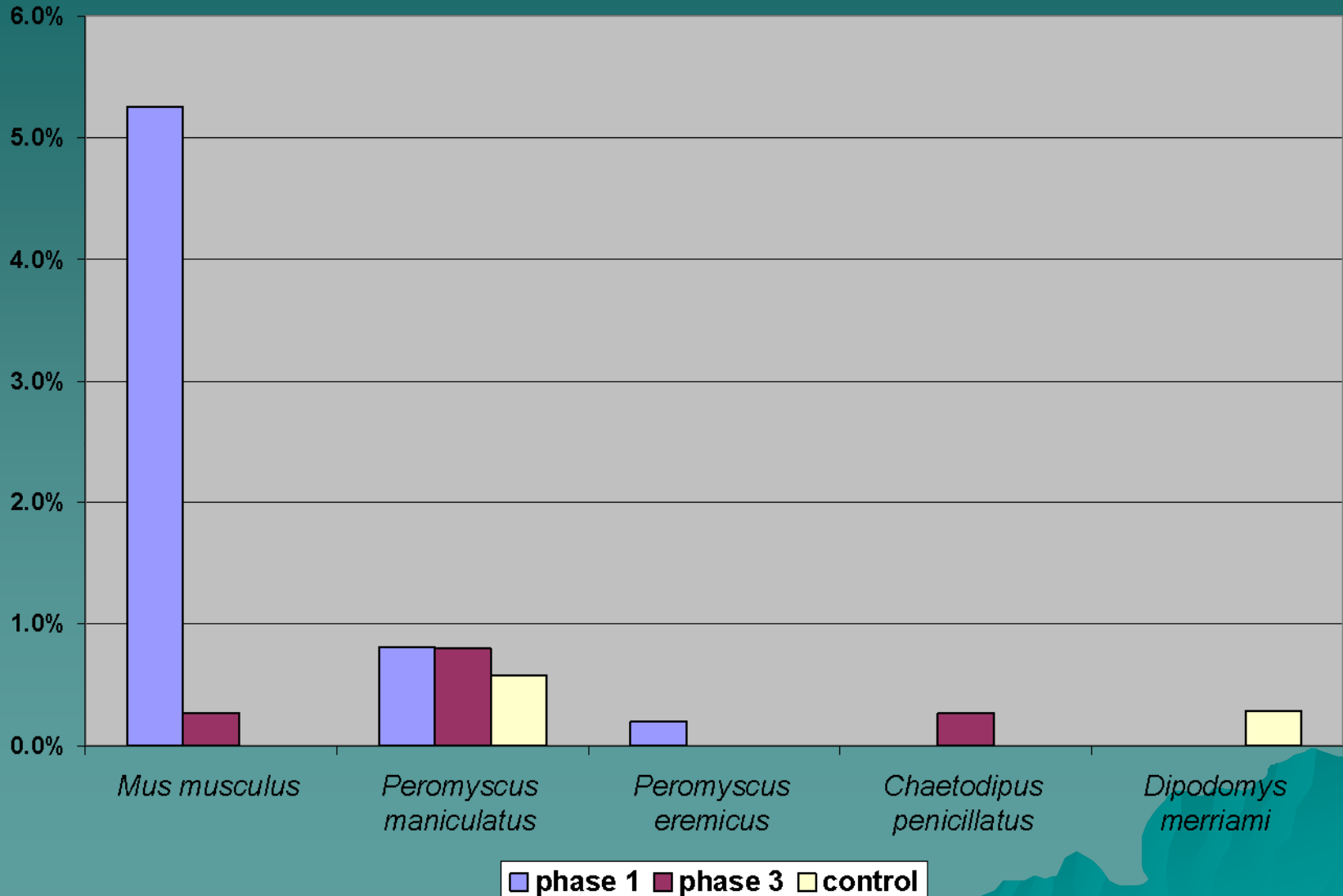
- ◆ Control Site: 25.0 birds/acre comprised of 15 species
- ◆ Phase 1: 103.2 birds/acre comprised of 12 species
- ◆ Phase 3: 152.6 birds/acre comprised of 13 species

BATS

| | Mean Bat Minutes Per Night \pm SE | # of Detectors |
|------------|-------------------------------------|----------------|
| ◆ November | 9.2 \pm 1.9 | 6 |
| ◆ January | 2.4 \pm 2.4 | 12 |
| ◆ April | 2.2 \pm 0.7 | 12 |
| ◆ July | 167.4 \pm 20.3 | 12 |

MSCP Bats detected include Western Red Bat and California Leaf-nosed Bat

Small Mammals



Small Mammals Trapped and Capture Rates During Spring 2007

| Species | Phase 1 | Phase 3 | Control | totals | Capture % |
|-------------------------------|---------|---------|---------|--------|-----------|
| <i>Peromyscus maniculatus</i> | 0 | 1 | 2 | 3 | 0.4 |
| <i>D. merriami</i> | 0 | 0 | 1 | 1 | 0.1 |
| totals | 0 | 1 | 3 | 4 | 0.5 |
| # of traps | 300 | 150 | 300 | 750 | |
| capture rate | 0.0% | 0.7% | 1.0% | 0.5% | |

Small Mammals Trapped and Capture Rates During Fall 2007

| Species | phase 1 | phase 3 | control | totals | capture % |
|---------------------------------|---------|---------|---------|--------|-----------|
| <i>Mus musculus</i> | 26 | 1 | 0 | 27 | 5.8% |
| <i>Peromyscus maniculatus</i> | 4 | 2 | 0 | 6 | 1.3% |
| <i>Peromyscus eremicus</i> | 1 | 0 | 0 | 1 | 0.2% |
| <i>Chaetodipus penicillatus</i> | 0 | 1 | 0 | 1 | 0.2% |
| totals | 31 | 4 | 0 | 35 | 7.5% |
| # of traps | 195 | 225 | 45 | 465 | |
| capture % | 15.9% | 1.8% | 0.0% | 7.5% | |

