

Willow Beach National Fish Hatchery Station Update 2011



CRAB Meeting January 11-12, 2012
Mark Olson

Current Staff

- Mark Olson, Project Leader
- Kurt Eversman , Assistant Project Leader
- Jake Rice, Fish Biologist
- Giovanni Cappelli , Animal Caretaker
- Rusty Stark, Seasonal Animal Caretaker
- John Smith, Administrative Technician
- Scott Peterson, Maintenance Worker
- Achii Hanyo, Term Fish Biologist, Vacant
- Term Biological Science Technician, Vacant

Currently On Station:

- Razorback Suckers: 07 RBS – 269

08 RBS – 4,306

09 RBS – 7,903

10 RBS – 19,628

11 RBS – 20,659

12 RBS – Arriving end of January 25K



- Rainbow Trout:

11 RBT – 104,492

12 RBT – 150,000

- Relict Leopard Frog Tadpoles: Arriving end of January

Distribution for Calendar Year 2011

- **Razorback Suckers: 7,975 stocked**



- 7,141 Reach 2
- 327 Reach 3
- 507 Reach 4

- **Rainbow Trout: 151,240 fish**



16,000 Below Davis Dam

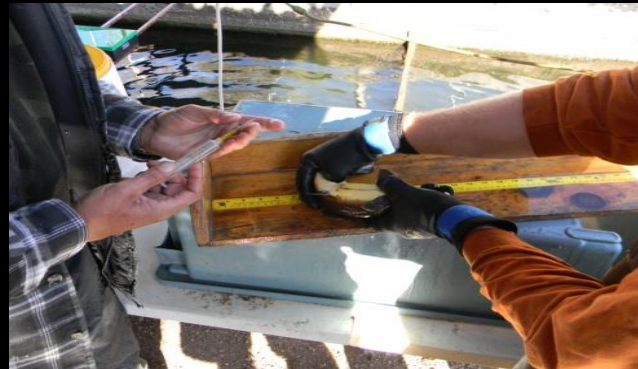
16,000 to Tribal waters

119,240 to Willow Beach/ Lake Mohave

Razorback Sucker Growth Study

Goal of study is to determine if it is possible to raise 1000 RBS to 500mm in 4 years.

- 2008 RBS's averaged 413 mm (4 yrs old)
- 2009 RBS's averaged 370 mm (3 yrs old)
- Compared raceway bottom surface area and density for best growth potential
- Continue to rear 2009 RBS's for 1 more year



Miscellaneous

- New well drilled for RBS production
- Old well rehabilitated



Questions?

