

DATA TABLE - U.S. COAL SUPPLY, CONSUMPTION, INVENTORIES, AND RAILROAD DATA

	2005	2006	2007					2008					2009					2010									
	Q4	Q4	Q1	Q2	Q3	Q4	Total or Ave	Q1	Q2	Q3	Q4	Total or Ave	Year 2008 v 2007	Q1	Q2	Q3	Q4	Total or Ave	Q3 2009 v 2008	Year 2009 v 2008	Q1	Q2	Q3	Q4	Total or Ave	Q3 2010 v 2009	Year 2010 v 2009
SUPPLY (Mn short tons)																											
Production Total	281.6	291.4	286.0	285.7	286.0	288.9	1146.6	289.1	283.9	299.0	299.4	1171.4	2.2%	281.4	262.6	273.4	268.3	1085.7	-8.6%	-7.3%	260.1	251.6	265.3	293.4	1070.4	-3.0%	-1.4%
Appalachia	97.5	93.8	99.5	95.5	91.6	91.9	378.5	97.8	99.1	95.4	98.6	390.9	3.3%	94.8	84.1	89.7	82.3	350.9	-6.0%	-10.2%	84.6	81.8	85.9	93.2	345.5	-4.2%	-1.5%
Interior	37.8	38.2	38.1	36.4	37.0	35.6	147.1	35.5	35.0	37.9	38.7	147.1	0.0%	37.1	37.5	36.8	35.4	146.8	-2.9%	-0.2%	34.3	33.2	35.0	38.7	141.2	-4.9%	-3.8%
Western	146.3	159.4	148.4	153.8	157.4	161.4	621.0	155.8	149.8	165.8	162.2	633.6	2.0%	149.6	141.0	146.9	150.6	588.1	-11.4%	-7.2%	141.2	136.6	144.4	161.4	583.6	-1.7%	-0.8%
Imports Total	7.8	8.9	8.8	8.4	10.6	8.6	36.4	7.6	9.0	8.5	9.1	34.2	-6.0%	6.3	5.4	5.3	6.6	23.6	-37.6%	-31.0%	6.9	8.5	9.2	8.5	33.1	73.6%	40.3%
Exports Total	12.4	12.9	11.1	14.7	16.2	17.1	59.1	15.8	23.1	20.3	22.3	81.5	37.9%	13.3	13	15	16	57.3	-26.1%	-29.7%	14.2	17.3	19	20.6	71.1	26.7%	24.1%
Metallurgical Coal	6.9	7.1	6.7	7.9	9.2	8.4	32.2	9.1	12.6	10.6	10.4	42.7	32.6%	8.5	6.5	9.7	10.3	35.0	-8.5%	-18.0%	7.2	9.0	9.9	11.9	38.0	2.1%	8.6%
Steam Coal	5.5	5.8	4.4	6.8	7.0	8.7	26.9	6.7	10.5	9.8	12.0	39.0	45.0%	4.9	6.4	5.3	5.7	22.3	-45.9%	-42.8%	6.9	8.3	9.1	8.7	33.0	71.7%	48.0%
CONSUMPTION (Mn short tons)																											
Electric Power Sector^b	257.4	255.8	257.5	246.6	283.6	257.5	1045.2	263.3	247.9	279.2	251.2	1041.6	-0.3%	237.5	217.0	248.4	240.2	943.1	-11.0%	-9.5%	245.4	227.5	267.9	248.1	988.9	7.9%	4.9%
Retail and Other Industry	17.1	16.2	15.6	14.8	14.4	15.3	60.1	15.2	14.6	14.3	14.0	58.1	-3.3%	13.2	11.3	11.9	12.2	48.6	-16.8%	-16.4%	13.3	12.4	12.8	13.1	51.6	7.6%	6.2%
Coke Plants	5.8	5.7	5.6	5.7	5.7	5.7	22.7	5.5	5.6	5.8	5.2	22.1	-2.6%	4.4	3.4	4.2	4.0	16.0	-27.6%	-27.6%	5.1	4.2	4.9	4.5	18.7	16.7%	16.9%
Discrepancy ^c	-3.2	-4.6	11.5	3.9	-4.7	-6.7		6.8	-1.4	0.2	4.1			8.1	2.2	16.1											
END-OF-PERIOD INVENTORIES (Mn short tons)																											
Primary Inventories ^d	35.0	36.5	34.0	32.5	30.1	34.0	32.7	32.5	31.4	30.2	27.3	30.4	-7.0%	28.9	31.9	24.3	24.7	27.5	-19.5%	-9.6%	28.9	31.9	24.3	24.7	27.5	0.0%	0.0%
Secondary Inventories ^e	109.3	150.4	149.6	162.8	150.4	158.8	155.4	153.7	161.1	153.5	171.9	160.1	3.0%	184.6	205.6	199.9	205.8	199.0	30.2%	24.3%	194.4	193.7	174.9	193.9	189.2	-12.5%	-4.9%
Electric Power Sector	101.1	141.0	141.4	154.8	142.7	151.2	147.5	147.0	153.9	145.8	163.1	152.5	3.3%	176.6	198.2	192.2	197.9	191.2	31.8%	25.4%	186.7	185.8	166.7	185.6	181.2	-13.3%	-5.2%
Conversion to Days Burn		50.1				52.8					57.3						76.6										
Bituminous Coal	52.9	67.8	68.9	74.9	66.9	64.0	68.7	60.4	63.7	54.9	64.9	61.0	-11.2%	77.0	92.2												
Sub-Bituminous Coal	44.4	68.4	67.6	74.8	71.0	82.7	74.0	83.7	85.8	85.8	93.6	87.2	17.8%	94.0	100.0												
Retail and General Industry	5.6	6.5	5.8	5.7	5.8	5.6	5.7	4.8	5.0	5.2	6.0	5.3	-8.3%	5.3	5.1	5.4	5.7	5.4	3.8%	2.4%	5.6	5.8	5.9	6.2	5.9	9.3%	9.3%
Coke Plants	2.6	2.9	2.4	2.4	2.0	1.9	2.2	1.5	1.8	2.0	2.3	1.9	-12.6%	2.1	1.8	1.8	1.7	1.9	-10.0%	-2.6%	1.6	1.7	1.7	1.7	1.7	-5.6%	-9.5%
COAL CARLOADS^f																											
BNSF (Originated)	552,426	610,997	582,301	592,031	603,592	613,092	2,391,016	615,012	571,125	616,494	624,404	2,427,035	1.5%	623,519	583,984	587,398			-4.7%								
UP (Originated)	464,530	514,788	494,682	492,910	528,686	530,539	2,046,817	524,597	507,181	554,018	534,459	2,120,255	3.6%	464,833	419,888	474,837			-14.3%								
KCS (Received)	53,516	62,147	58,098	60,515	60,650	61,955	241,218	55,502	52,321	62,461	61,283	231,567	-4.0%	61,440	56,929	66,438			6.4%								
NS (Originated)	329,342	321,856	324,375	330,838	310,449	302,054	1,267,716	319,404	338,811	326,346	330,596	1,315,157	3.7%	300,407	247,300	271,064			-16.9%								
CSX (Originated)	357,337	358,541	357,112	360,985	355,587	363,572	1,437,256	375,850	394,767	373,493	379,523	1,523,633	6.0%	369,614	310,830	330,211			-11.6%								
COAL TRAIN SPEEDS^g																											
BNSF		18.1	18.6	18.5	19.3	20.3	19.2	20.9	20.1	19.7	19.8	20.1	5.0%	22.1	22.5	22.6			14.7%								
UP	20.3	20.9	20.6	19.5	20.3	21.3	20.4	21.0	21.4	22.1	23.3	22.0	7.5%	25.5	25.6	25.9			17.2%								
KCS		22.9	21.7	20.9	20.8	21.3	21.2	20.8	21.5	22.4	25.7	22.6	6.7%	26.7	26.9	26.1			16.5%								
NS	14.6	15.4	15.4	15.5	15.7	16.0	15.7	16.2	15.7	20.0	16.5	17.1	9.3%	17.1	17.6	16.6			-17.0%								
CSX	14.6	15.5	16.2	16.4	17.1	16.9	16.7	16.7	15.0	15.5	16.2	15.9	-4.8%	16.5	16.5	17.0			9.7%								

(Supply, Consumption and Inventories Data from EIA Short Term Energy Outlook 11-10-09, Electric Power Monthly 11-13-09)

(b) Coal used for electricity generation and (a limited amount of) useful thermal output by electric utilities and independent power producers.

(c) The discrepancy reflects an unaccounted-for shipper and receiver reporting difference, assumed to be zero in the forecast period.

(d) Primary stocks are held at the mines, generation plants, and distribution points.

(e) Secondary stocks are held by users. It includes an estimate of stocks held at utility plants sold to nonutility generators.

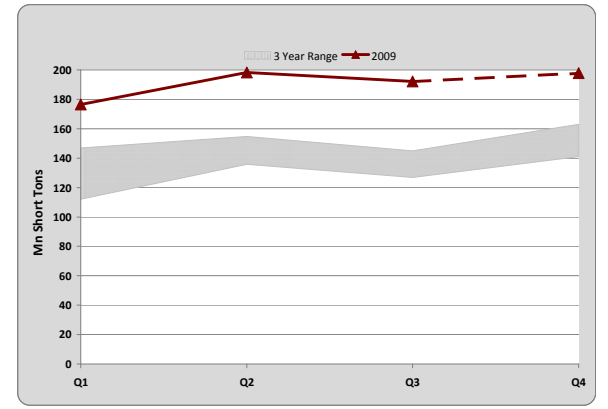
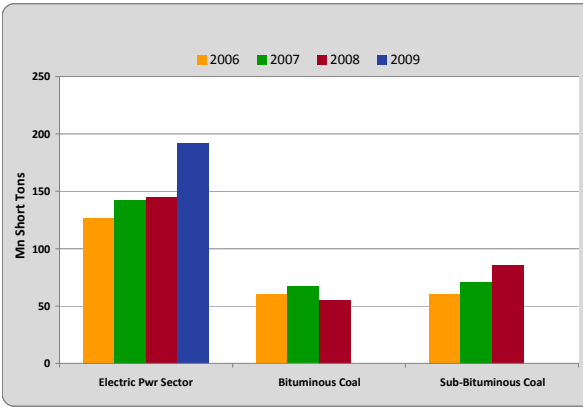
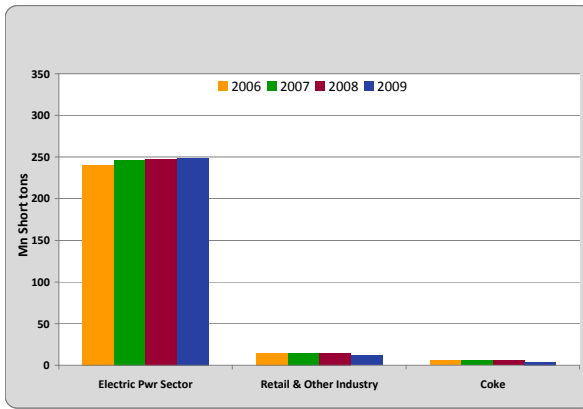
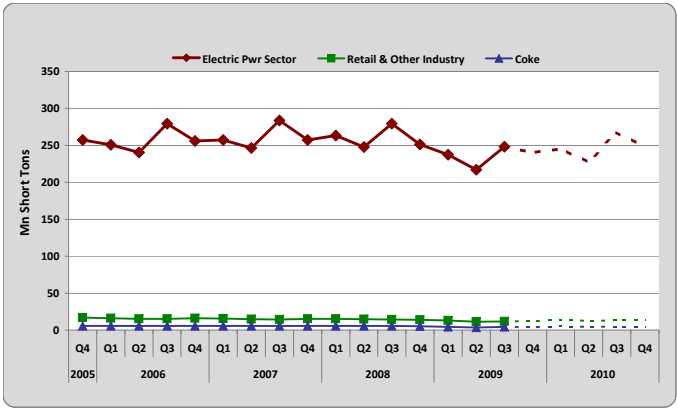
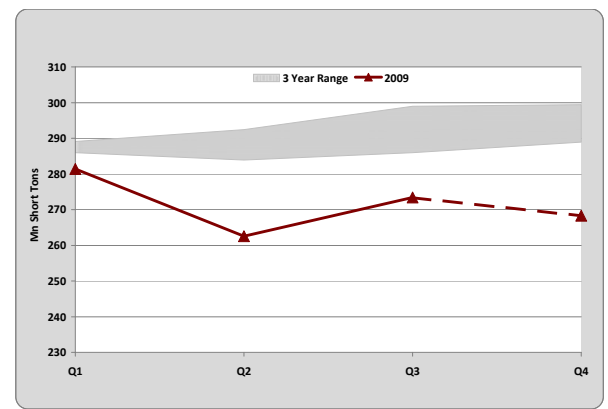
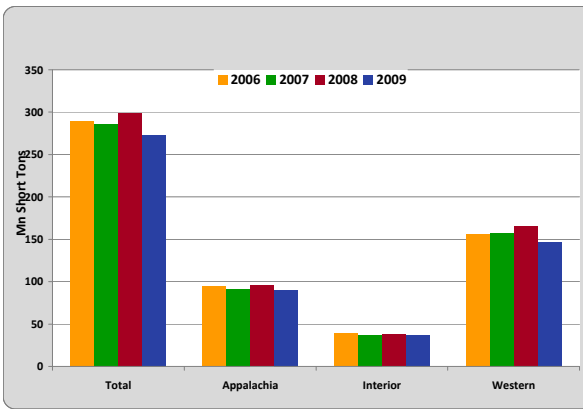
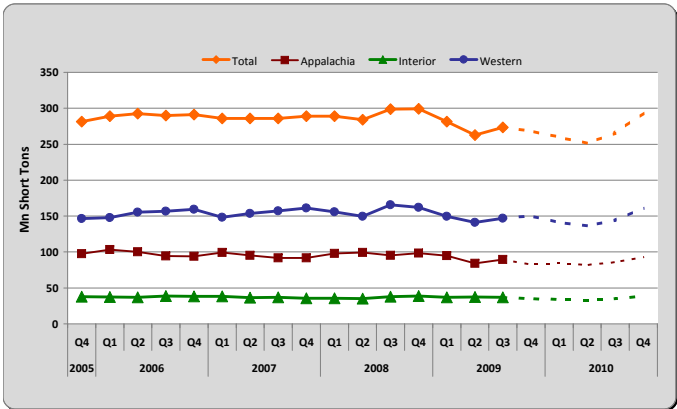
(f) Source: American Association of Railroads (AAR).

(g) Source: BNSF, Union Pacific, Kansas City Southern, Norfolk Southern, AAR.

Notes: The approximate break between historical and forecast values is shown with **historical data printed in bold**, estimates and forecasts in italics.

Gray background - calculated numbers. Yellow background - updated data unavailable.

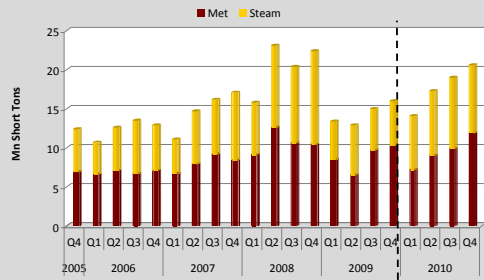
U.S. COAL PRODUCTION, CONSUMPTION, AND INVENTORIES DASHBOARD



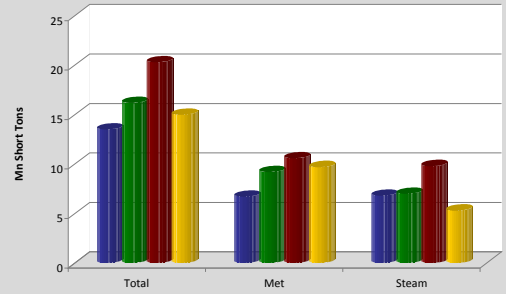
Source Data: EIA

U.S. COAL EXPORTS DASHBOARD

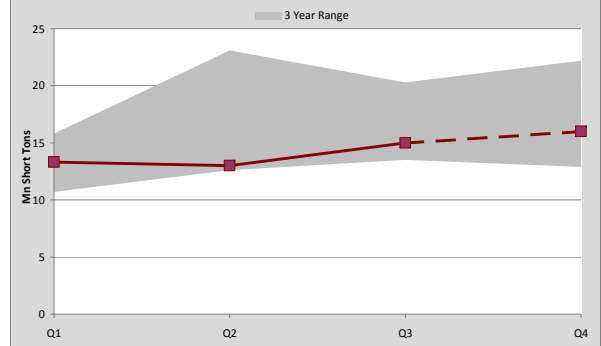
EXPORTS



■ Met ■ Steam



■ 2006 ■ 2007 ■ 2008 ■ 2009

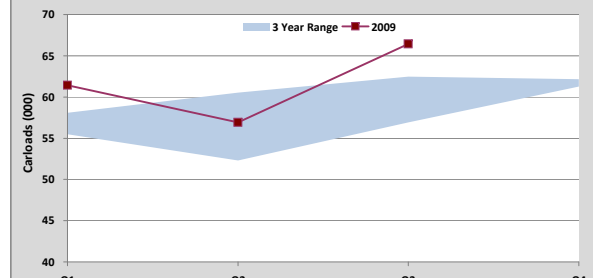
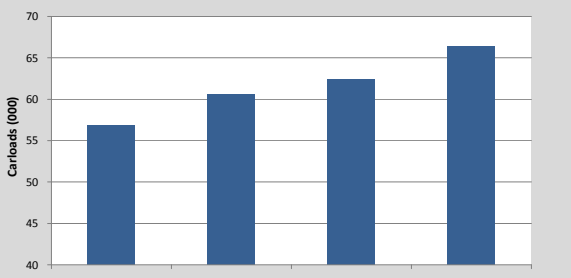
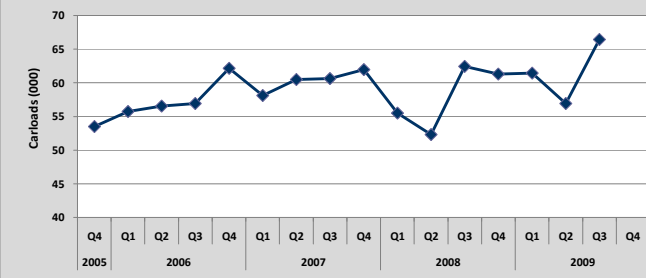
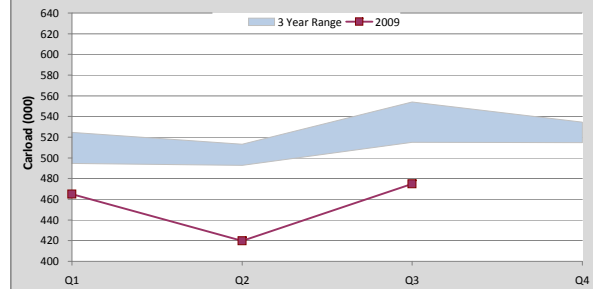
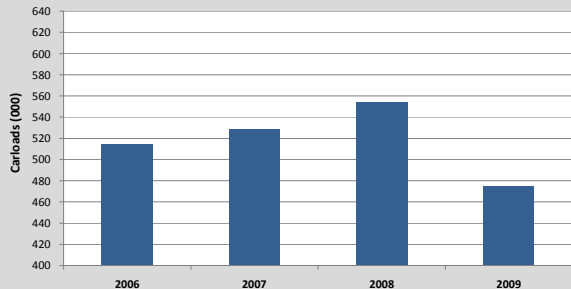
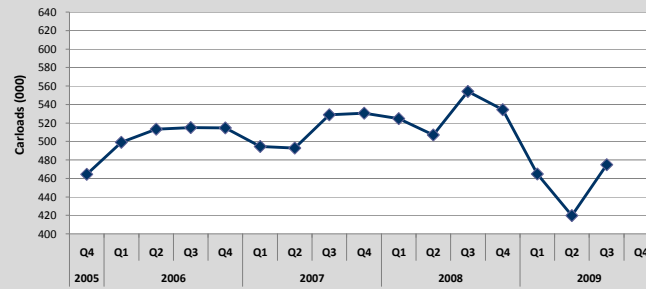
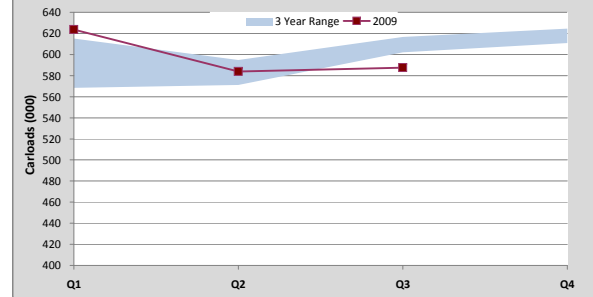
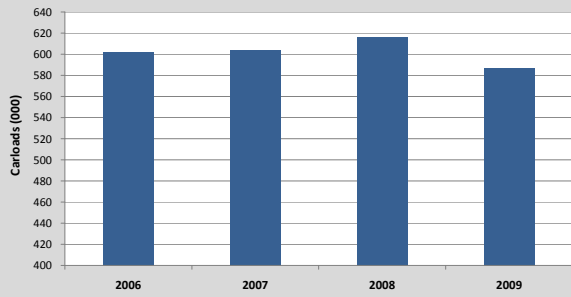
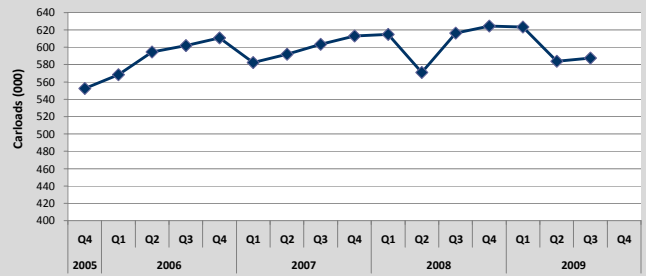


■ 3 Year Range

Source Data: EIA

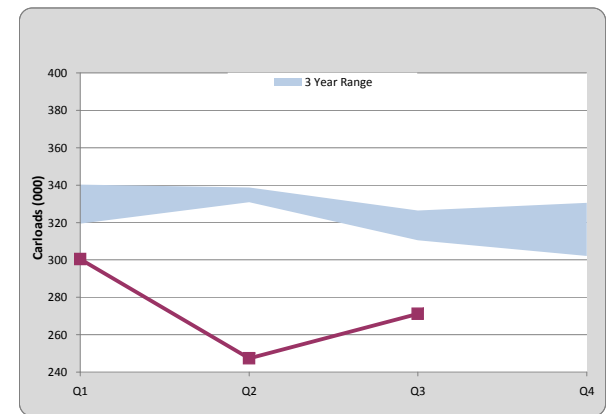
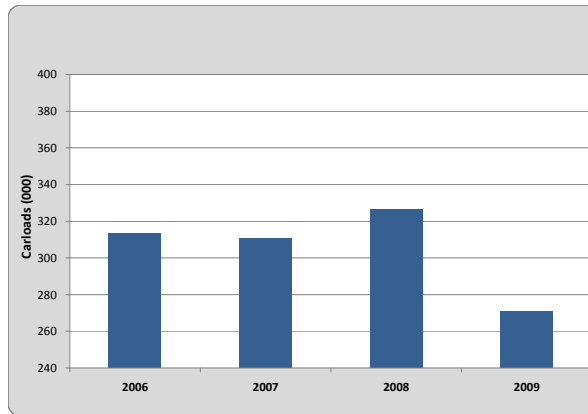
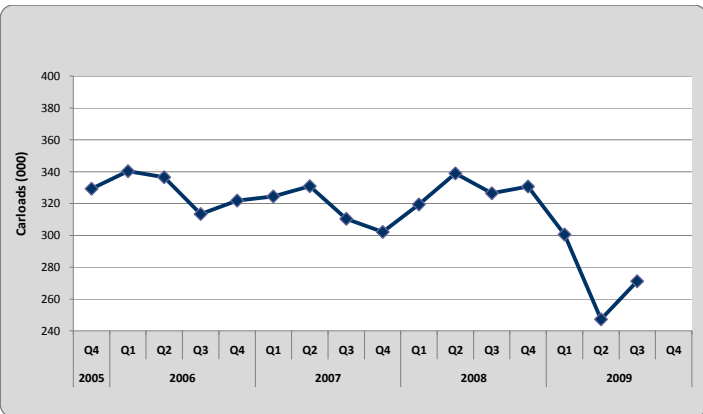
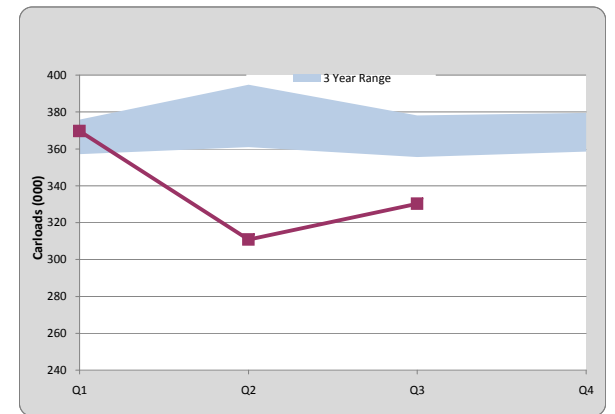
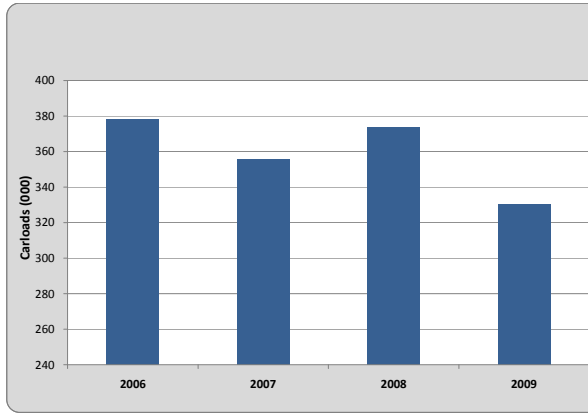
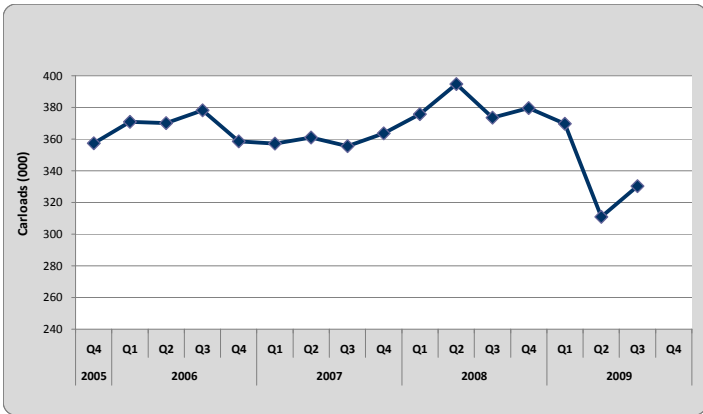
WESTERN RAILROAD COAL CARLOADS DASHBOARD

BNSF Historical Coal Originations



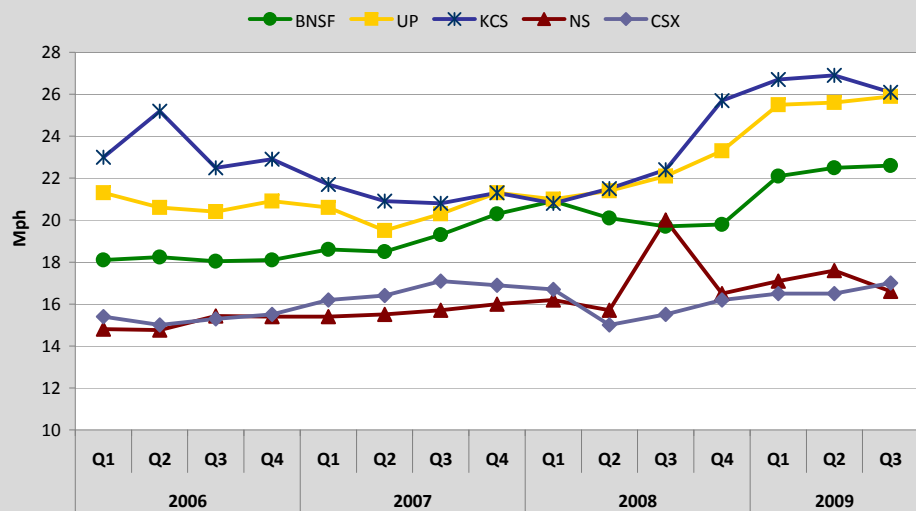
Source Data: AAR, BNSF, UP, KCS

EASTERN RAILROAD COAL CARLOAD DASHBOARD

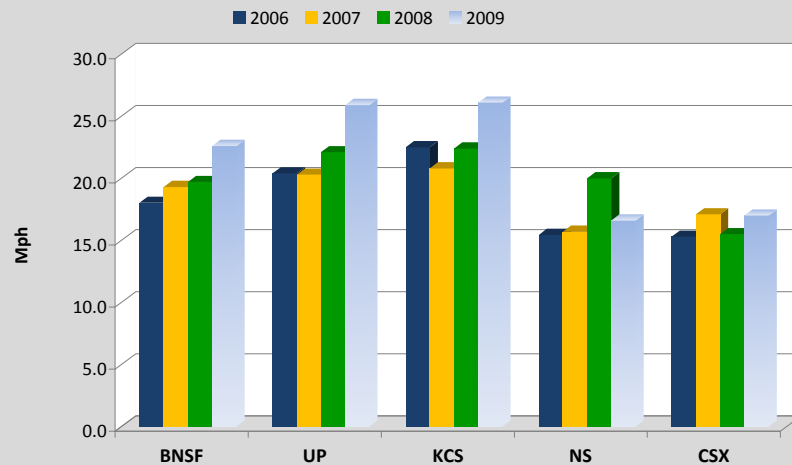


Source data: AAR, CSX, NS

RAILROAD COAL TRAIN SPEED DASHBOARD



Q3 Coal Train Speed Comparison



Source Data: AAR, BNSF, UP, KCS, NS, CSX