

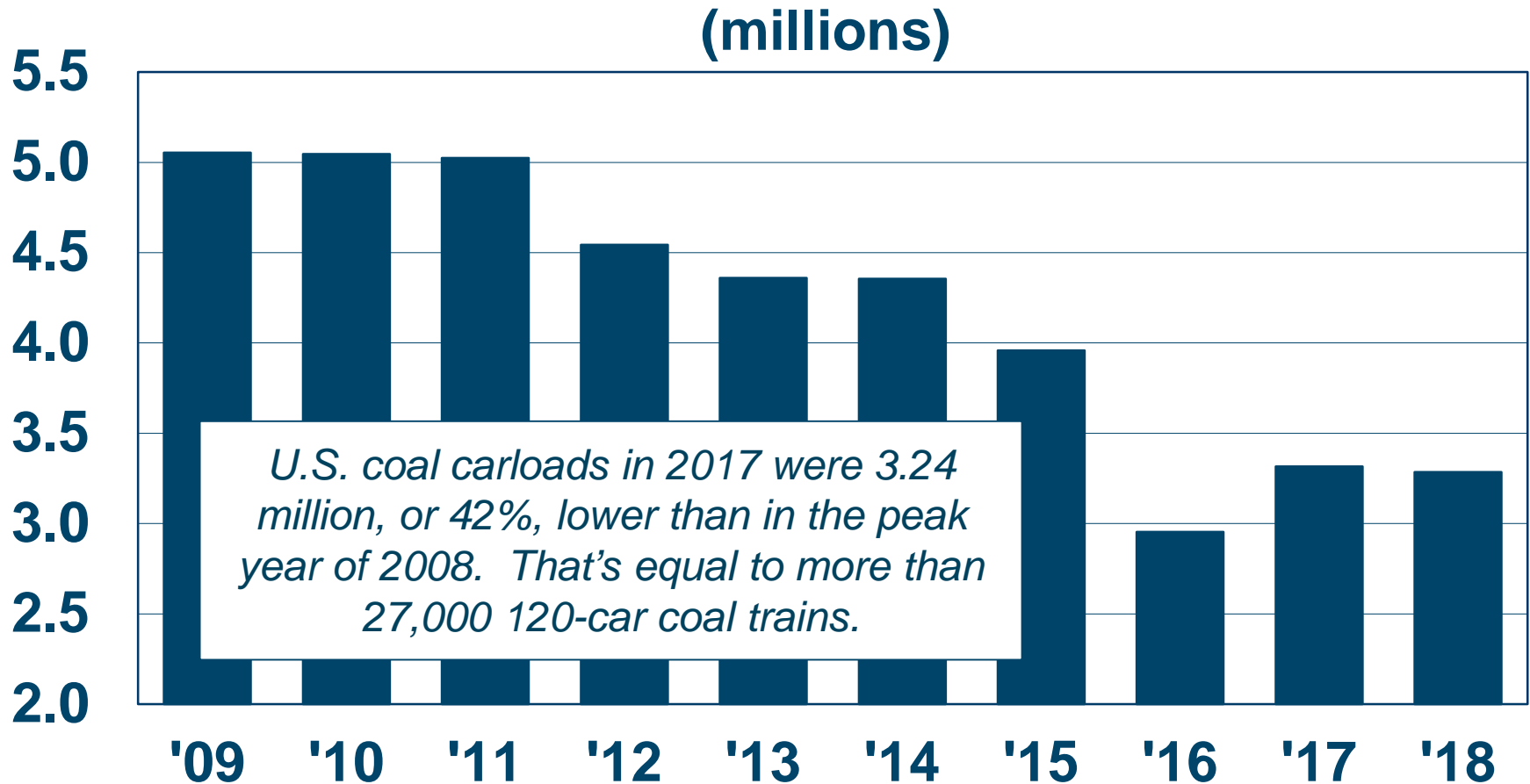


Railroad Industry Report

**Presented to the
Rail Energy Transportation Advisory
Committee
October 4, 2018**



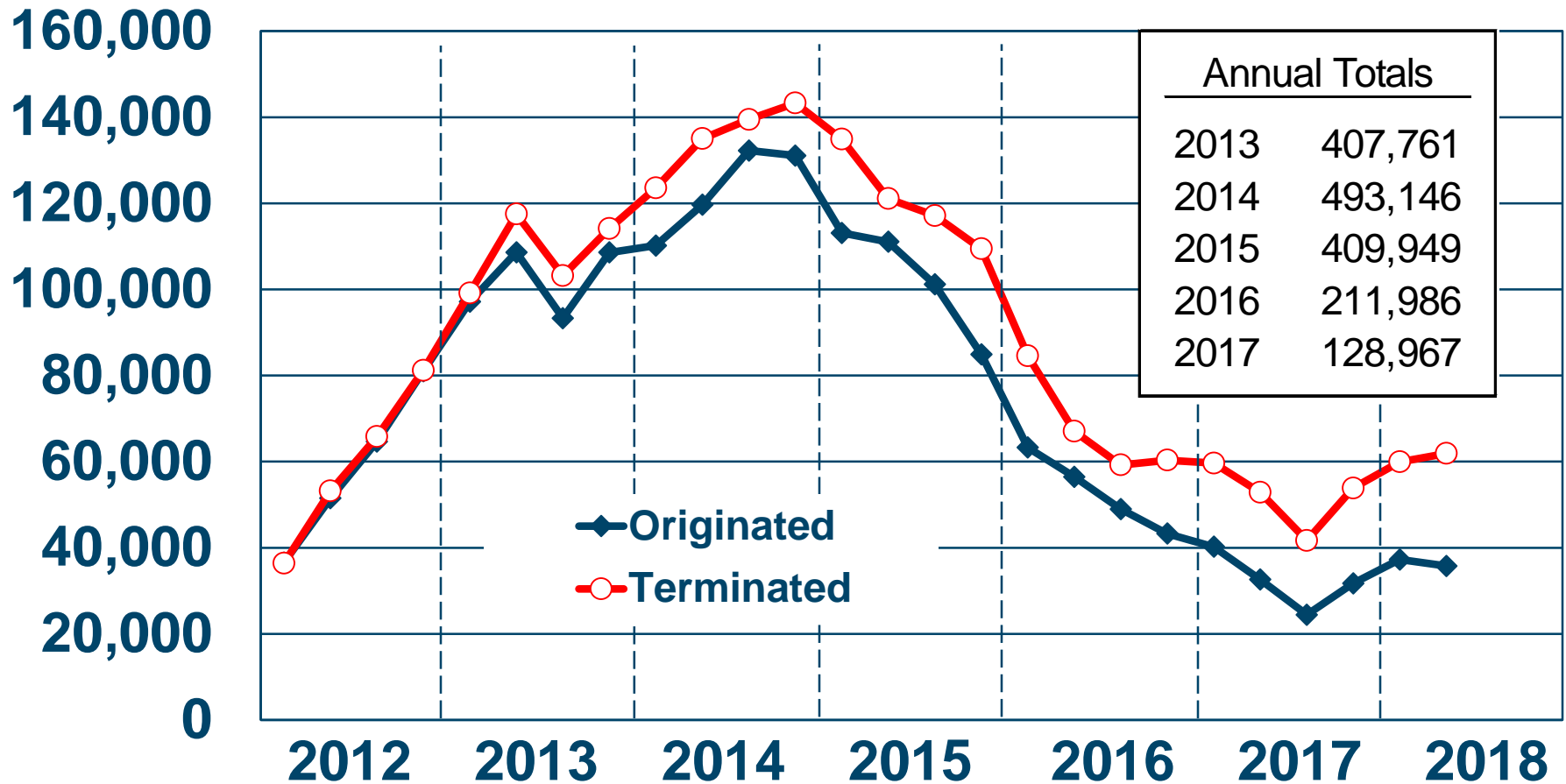
U.S. Rail Carloads of Coal: YTD Through September



Data are originations and don't include the U.S. operations of CN and CP.
Source: AAR *Weekly Railroad Traffic*



U.S. Rail Carloads of Crude Oil by Quarter

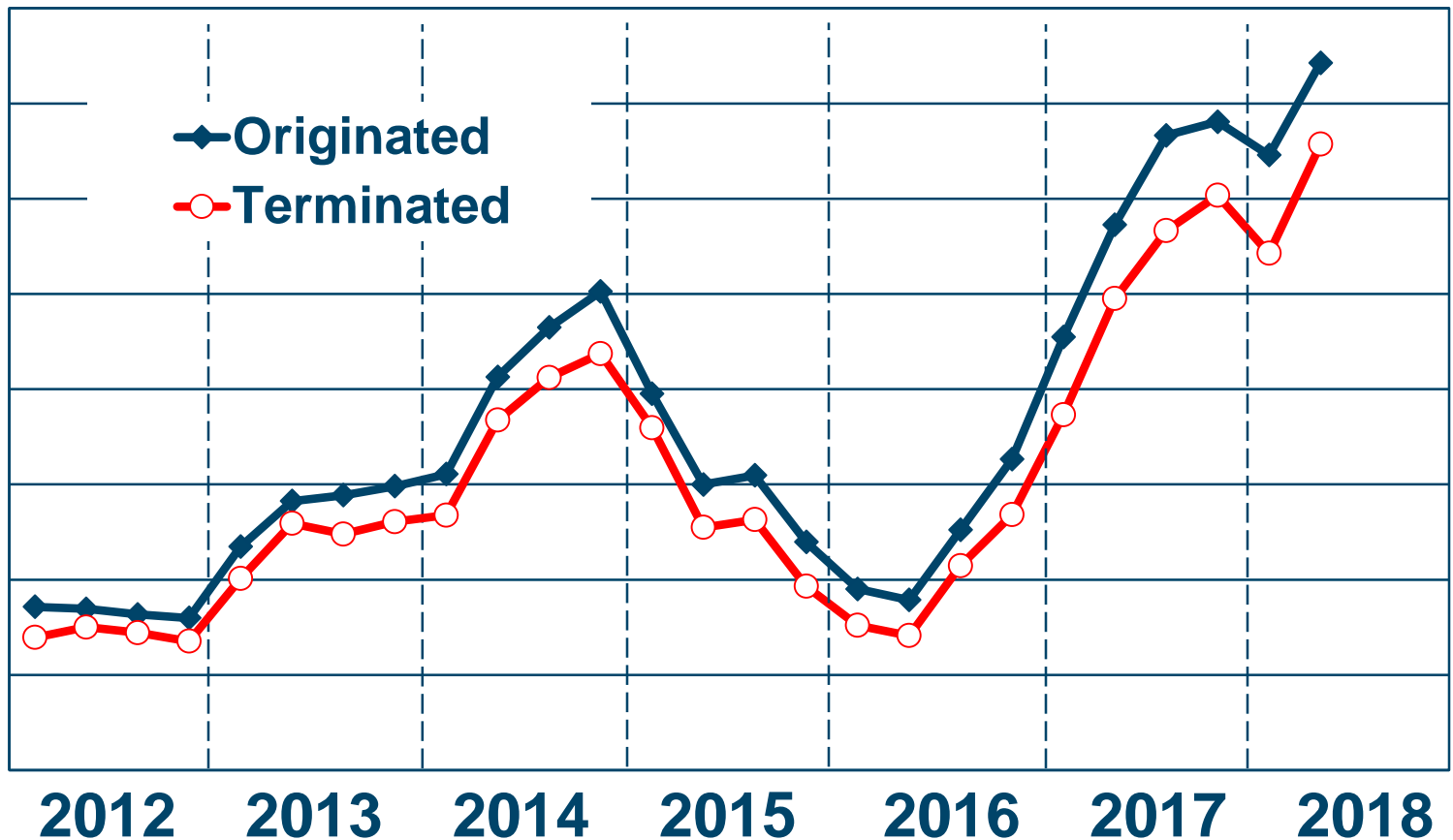


Quarterly figures may not add precisely to totals. Data are for Class I railroads only. Source: AAR *Freight Commodity Statistics*



U.S. Rail Carloads of Industrial Sand by Quarter

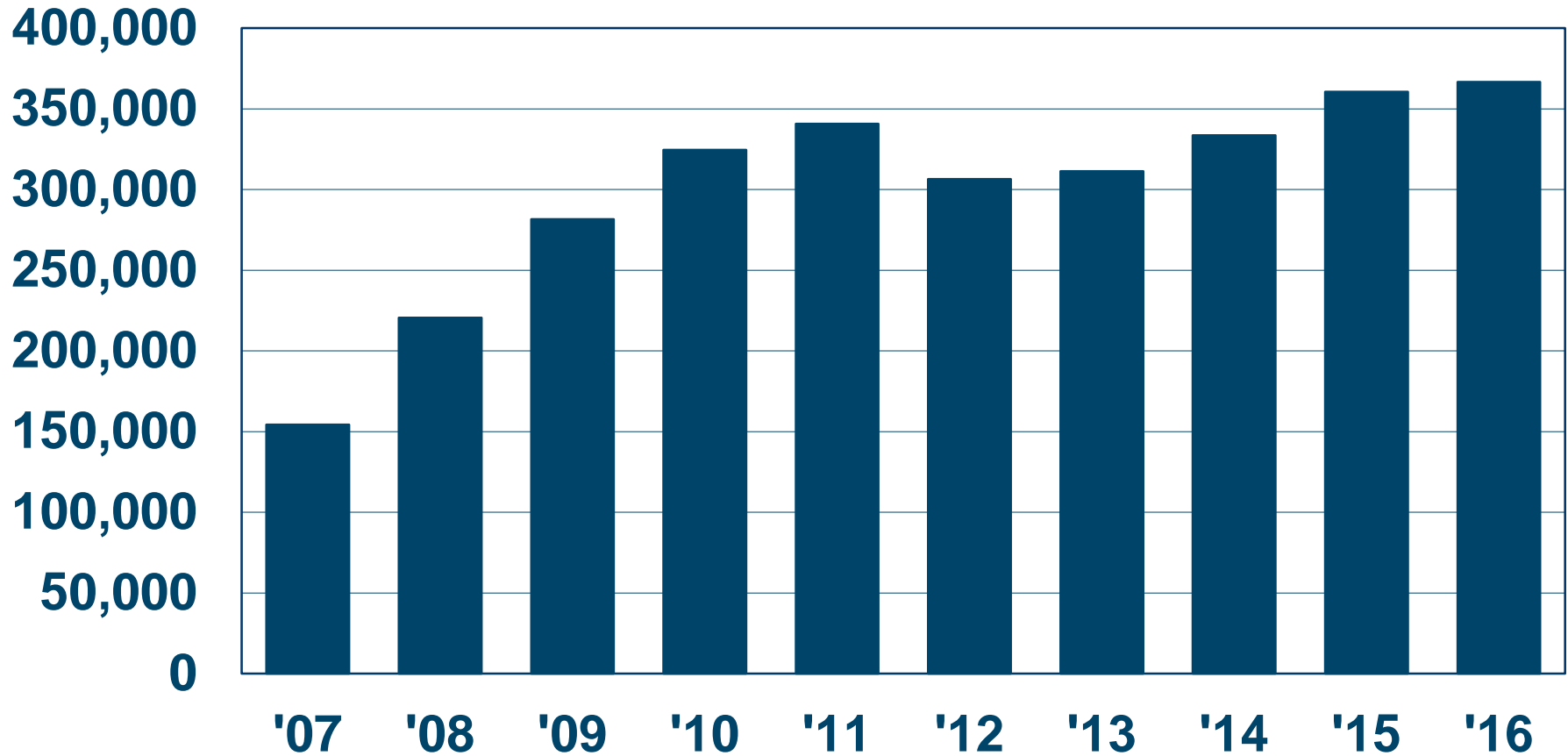
200,000
180,000
160,000
140,000
120,000
100,000
80,000
60,000
40,000



Quarterly figures may not add precisely to totals. Data are for Class I railroads only. Source: AAR *Freight Commodity Statistics*



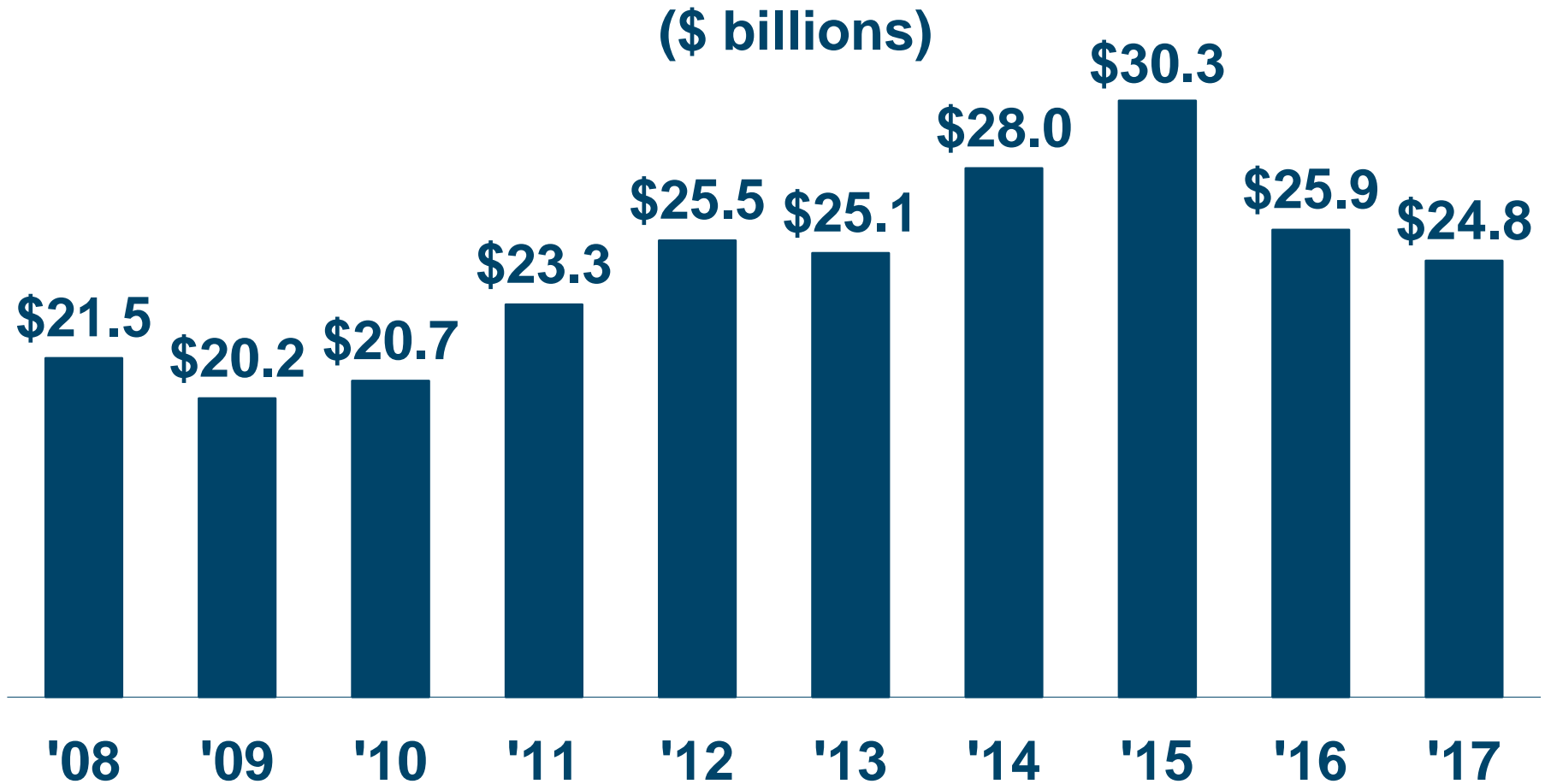
U.S. Carloads of Ethanol



Source: STB Waybill Sample



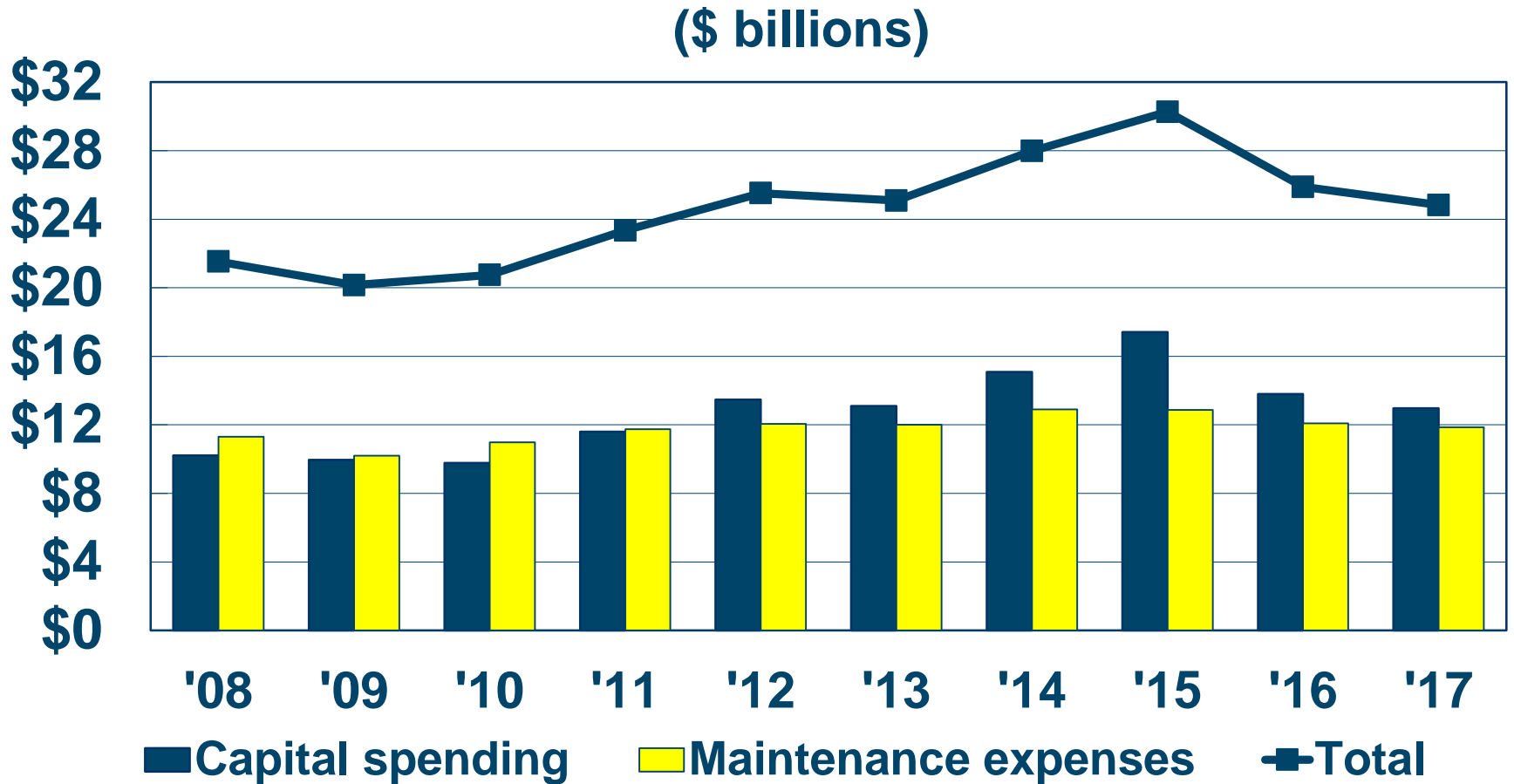
Continued Massive Spending on Infrastructure and Equipment*



*Capital spending + mainten. expenses. 2017 is preliminary. Data are for Class I RRs. Source: AAR



Investment Continues on Infrastructure & Equipment

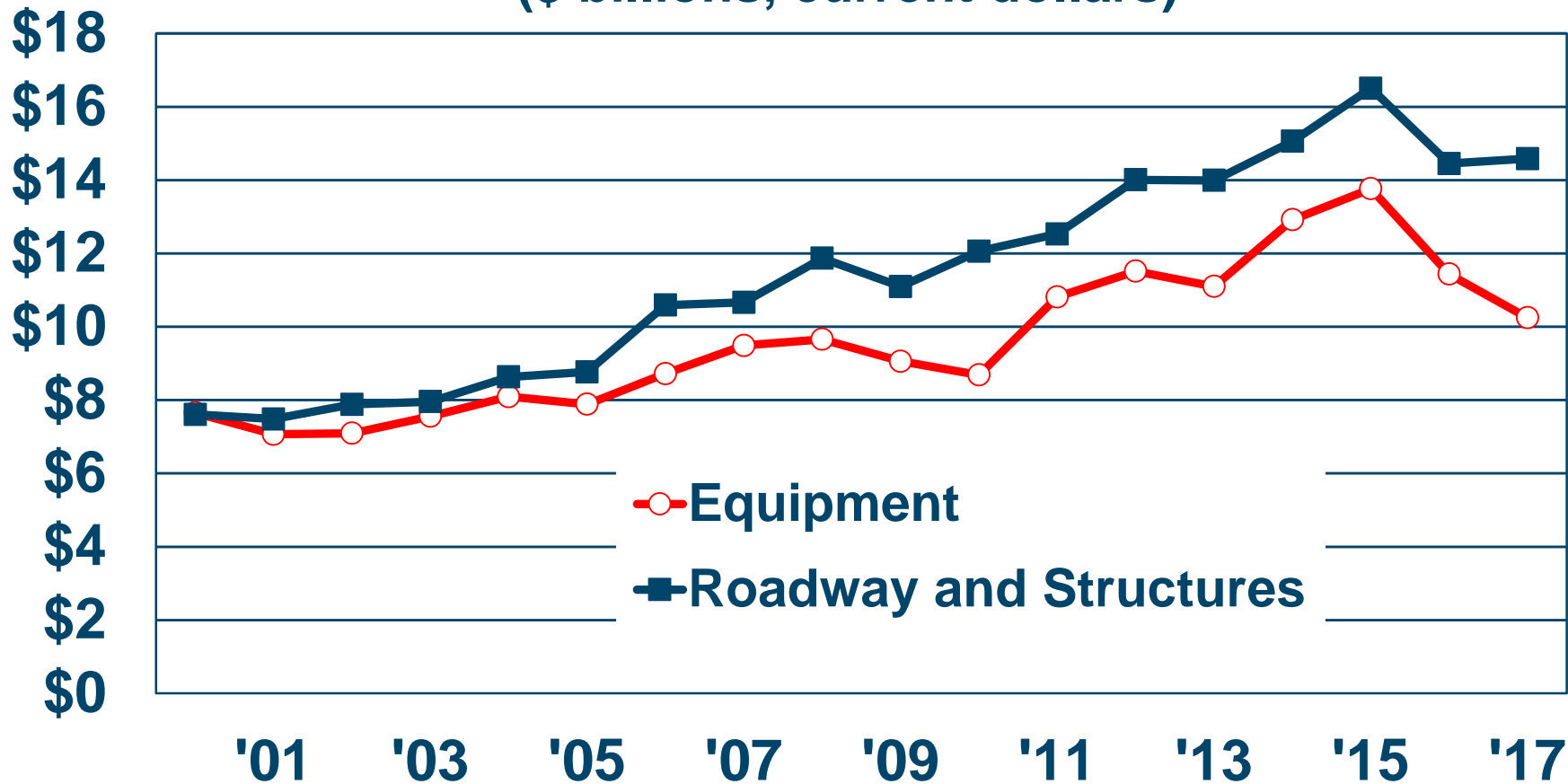


Data are for Class I railroads. Source: AAR



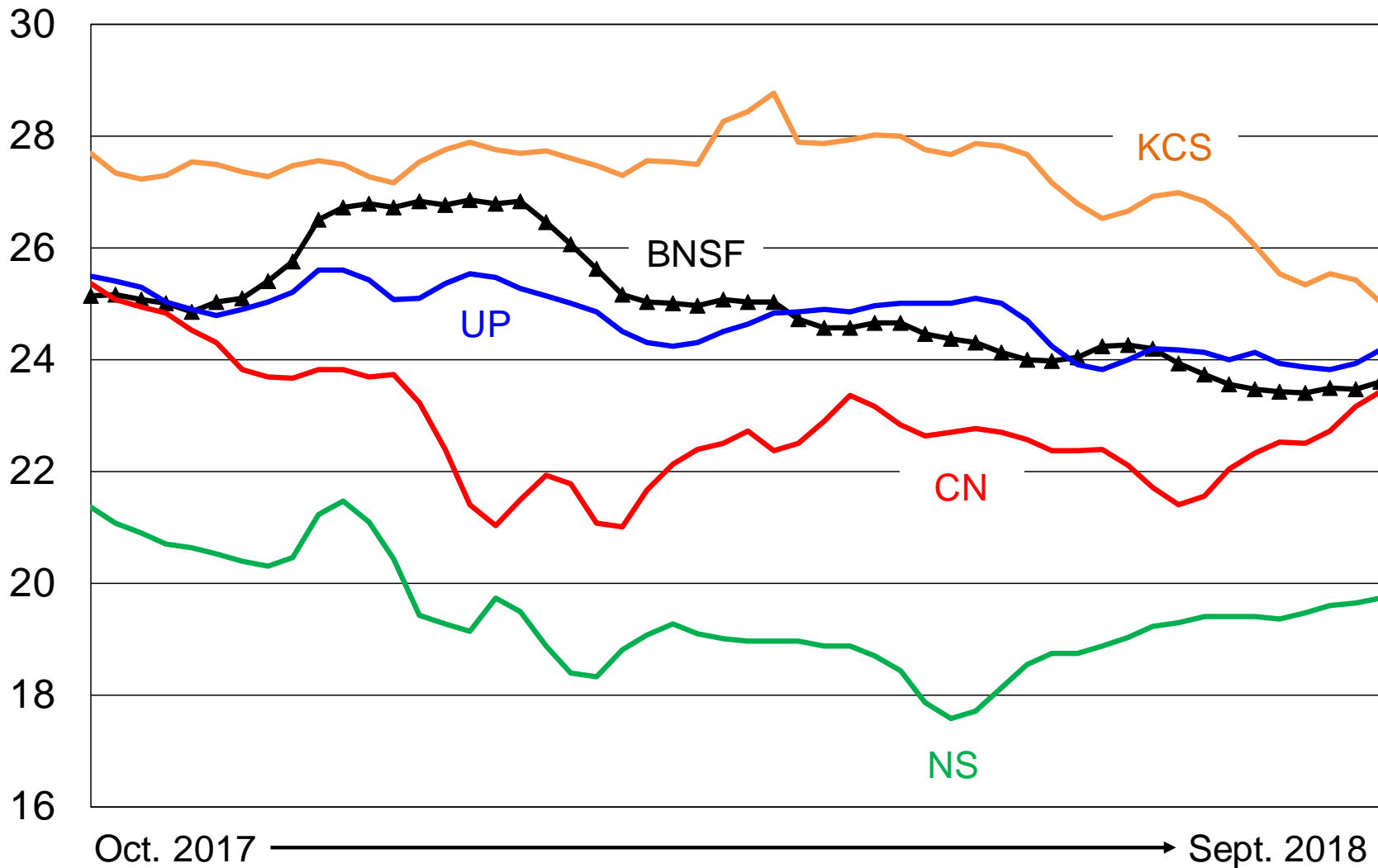
Railroad Spending on Infrastructure and Equipment

(\$ billions, current dollars)



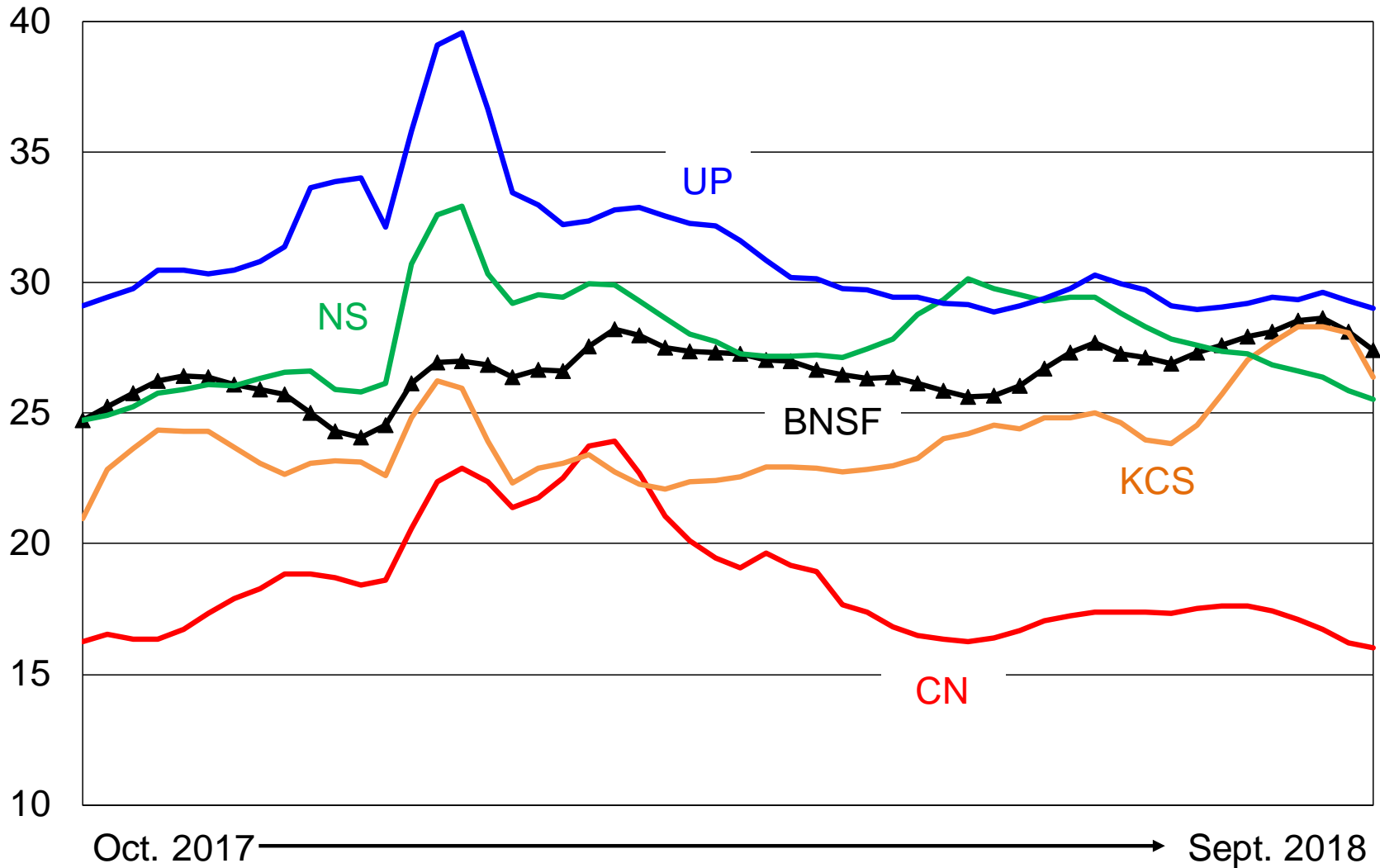
Data are for Class I railroads. Source: AAR

Average Train Speed: Oct. 2017 - Sept. 2018 (miles per hour, 3-week moving average)



Source: www.railroadpdm.org

Average Terminal Dwell: Oct. 2017 - Sept. 2018 (hours, 3-week moving average)



Source: www.railroadpm.org