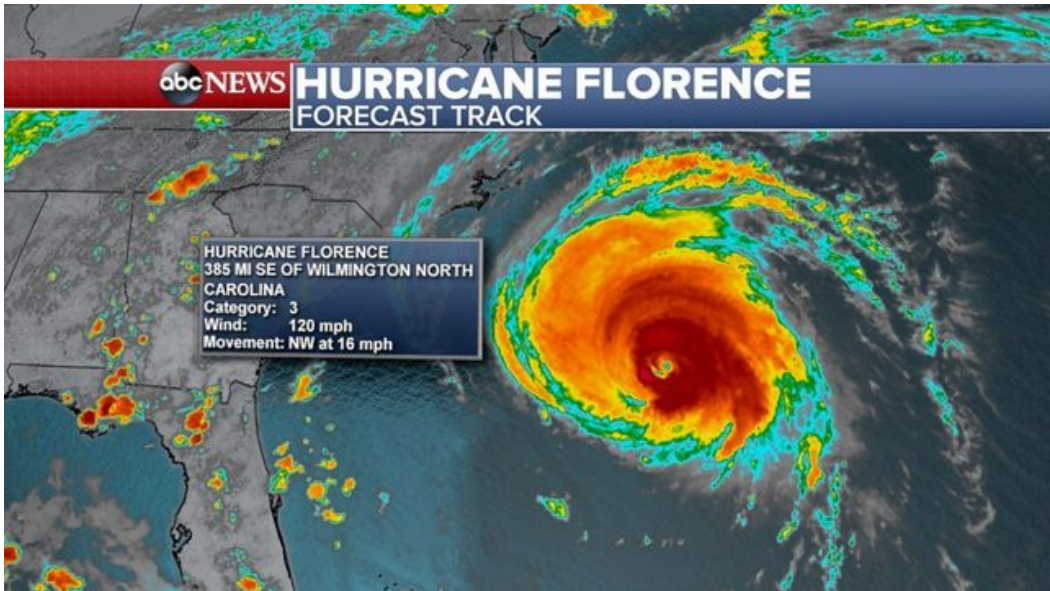





Surface Transportation Board - RETAC Coal Producer Update

Jill Harrison, SVP & General Counsel **October 4, 2018**

Effects of Hurricane Florence



Hurricane Florence Forecast, ABC News



Sector Hampton Roads Marine Safety Information Bulletin

Commander
 United States Coast Guard
 Sector Hampton Roads
 4000 Coast Guard Blvd
 Portsmouth, VA 23703

MSIB Number: 18-209
 Date: September 12, 2018
 Phone: (757) 668-5580
 E-Mail: HamptonRoadsWaterways@uscg.mil

Continuation of Port Condition MODIFIED ZULU

SUMMARY: This advisory is inform you that due to the approach and current forecasted path of Hurricane FLORENCE, the Hampton Roads Captain of the Port is maintaining Port Condition MODIFIED ZULU established at 6:00 a.m. today.

The following area is closed to all vessel traffic at this time:

- Coastal waters of Virginia from the COLREGS Demarcation Line extending seaward 12 nautical miles, from Cape Charles Light south to the Virginia-North Carolina border, see image at end of this message.

The following areas remain open to all vessel traffic and commercial activities:

- Southern Chesapeake Bay and its river tributaries, inside the COLREGS Demarcation Line.
- Virginia's coastal waters north of Cape Charles Light

September 12, 2018 Marine Safety Notification

<i>Timeframe</i>	Vessel queue at Dominion Terminal Associates	Vessel queue at Norfolk Southern's Pier VI
<i>Pre Florence</i>	5 vessels at anchor	10 vessels at anchor
<i>9/10/18 - 9/15/18</i>	Average of 7 vessels at anchor	Average of 11 vessels at anchor
<i>As of 10/1/18</i>	6 vessels at anchor	7 vessels at anchor

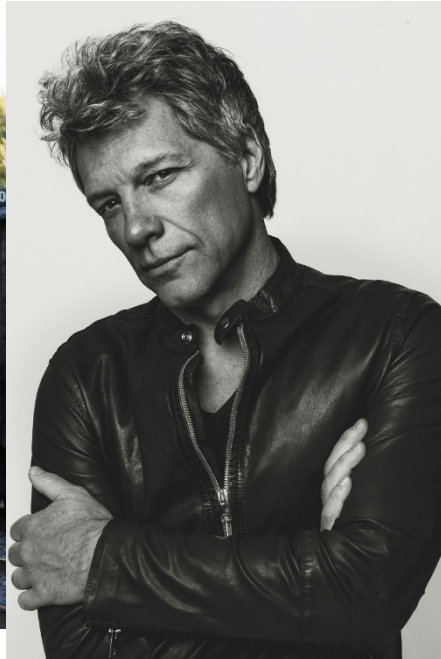


Pier 6 – Lamberts Point, The Virginian Pilot

Transportation Schedules



CSX Train, Reuters



Jon Bon Jovi, www.bonjovi.com



Vessel, Maritime Connector

Pricing Update



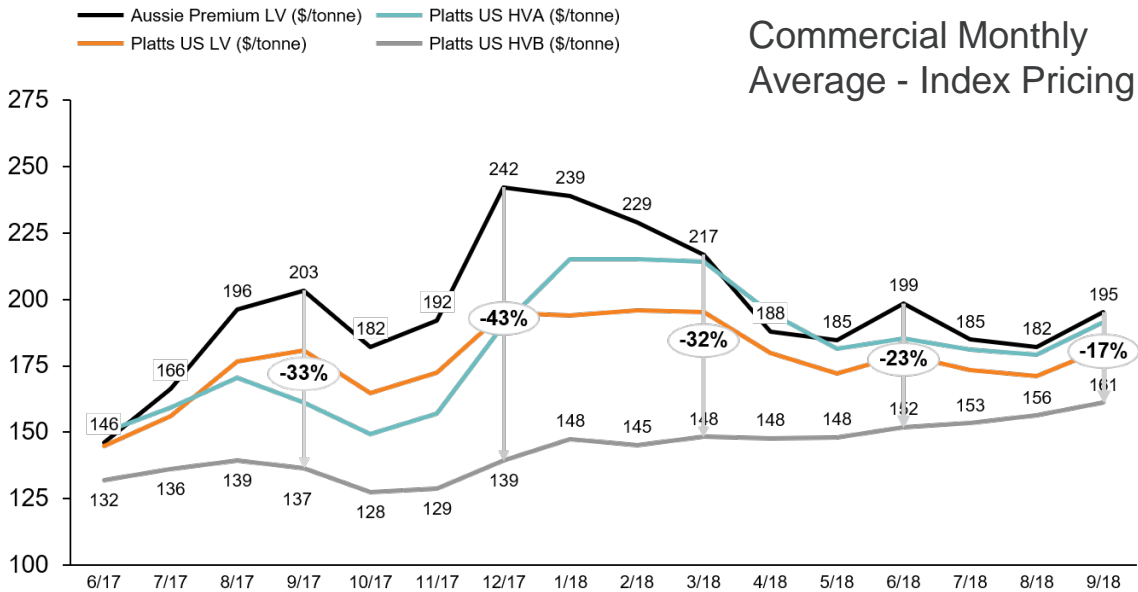
Economy Illustration – DepositPhotos



Contura Affiliated Operations

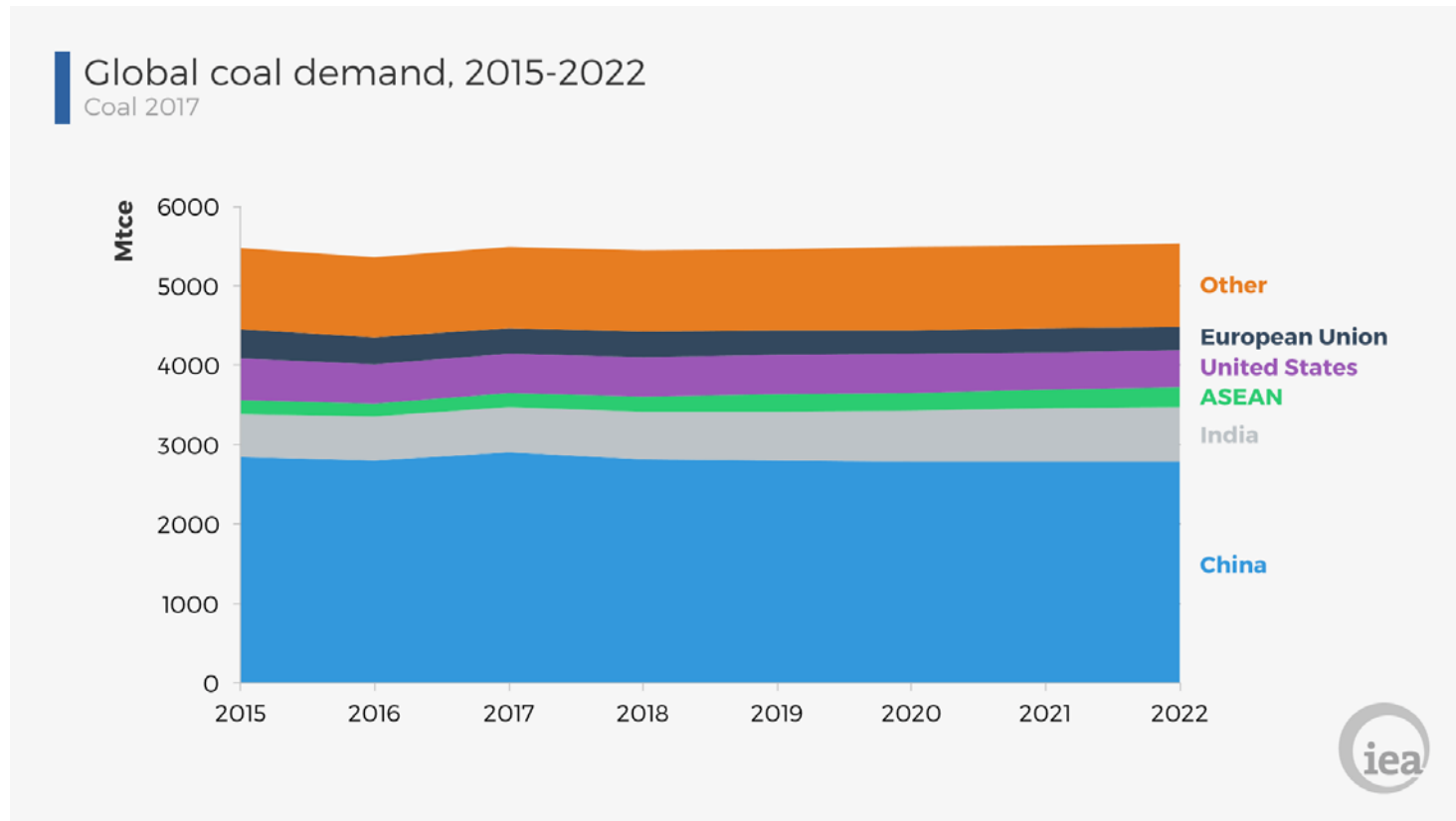


Contura Coal



*Indices for September 2018 have been updated through 9/14/18.

Global Coal Demand



Projection from 2017 – affected by.....

Impact of Steel Import Tariffs

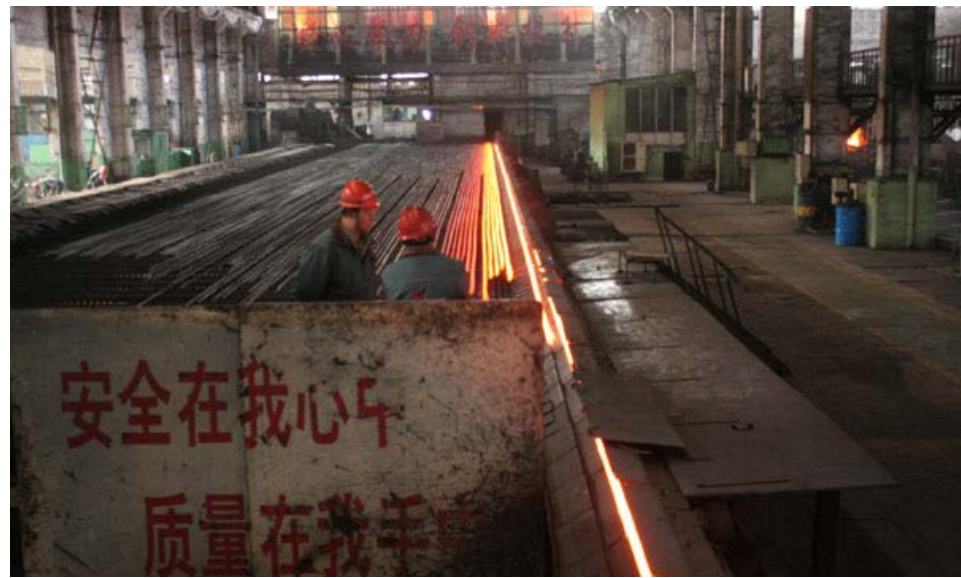
- Higher domestic steel prices?
- Loss of U.S. jobs?
- Exemption extensions for some countries?
- Reduction in U.S. met exports to targeted countries?



A coil of steel wire was loaded onto a truck at a depot on the outskirts of Shanghai in March, Bloomberg News



Getty Images



China News Daily