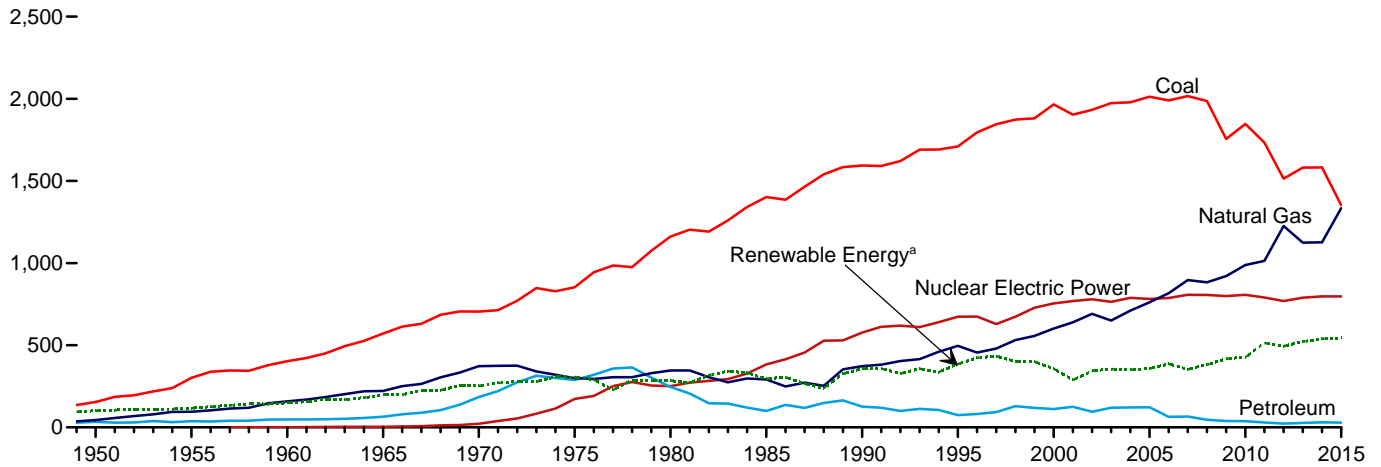
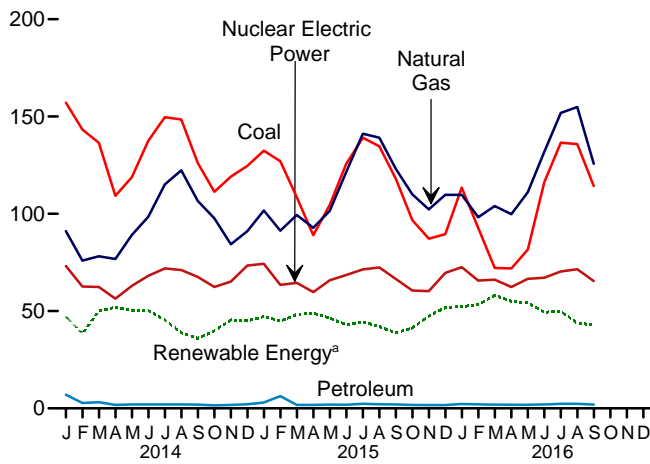


Figure 7.2 Electricity Net Generation
(Billion Kilowatthours)

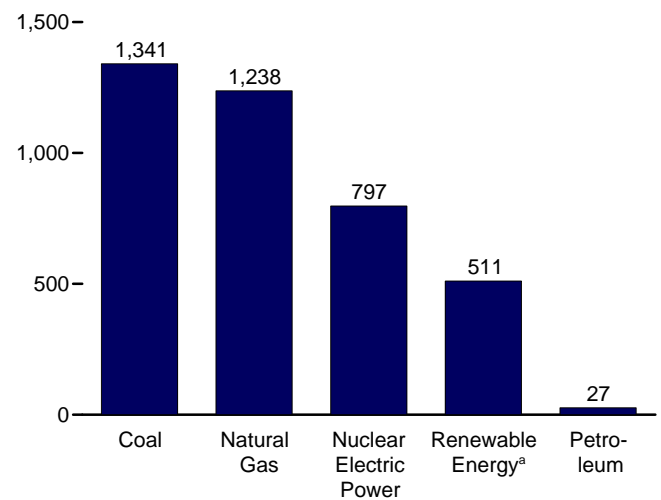
Total (All Sectors), Major Sources, 1949–2015



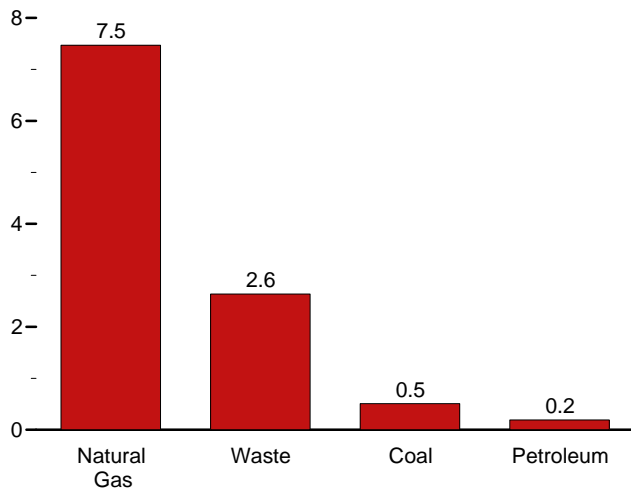
Total (All Sectors), Major Sources, Monthly



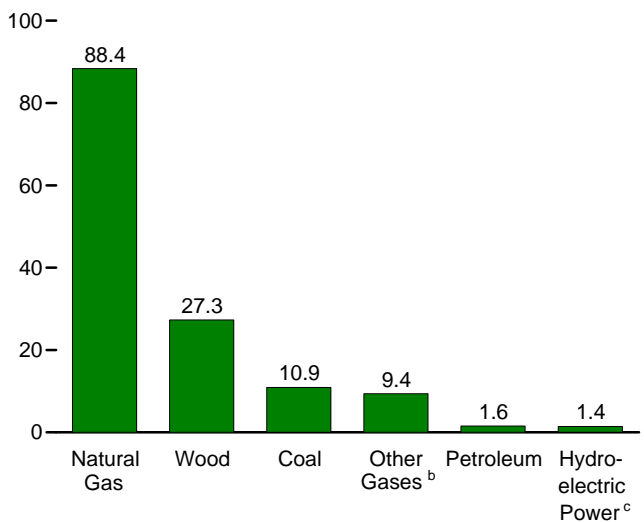
Electric Power Sector, Major Sources, 2015



Commercial Sector, Major Sources, 2015



Industrial Sector, Major Sources, 2015



^a Conventional hydroelectric power, wood, waste, geothermal, solar/PV, and wind.

^b Blast furnace gas, and other manufactured and waste gases derived from fossil fuels.

^c Conventional hydroelectric power.

Note: Data are for utility-scale facilities.

Web Page: <http://www.eia.gov/totalenergy/data/monthly/#electricity>.

Sources: Tables 7.2a–7.2c.