



SPONGES of Deepwater Communities in the Northwestern Gulf of Mexico

Developed by Flower Garden Banks National Marine Sanctuary

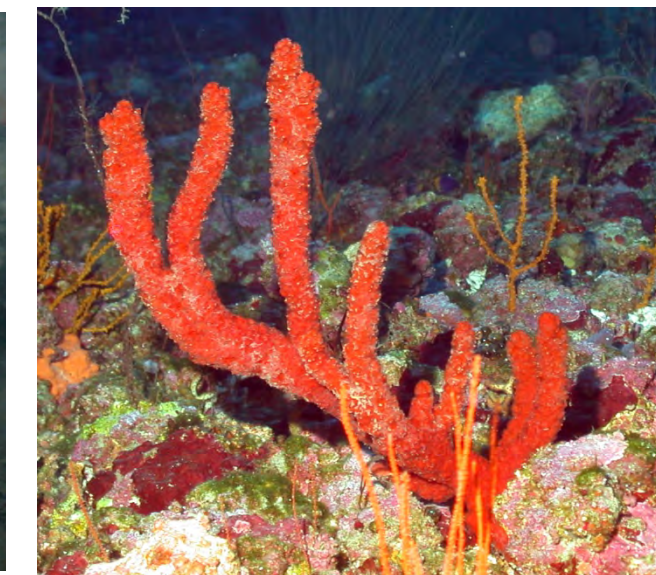
Emma L. Hickerson and G.P. Schmahl

Collaborators: Kyle Byers and Douglas C. Weaver (NOAA/FGBNMS), Lance Horn (NURC/UNCW), Klaus Ruetzler (Smithsonian Institute)

December, 2012



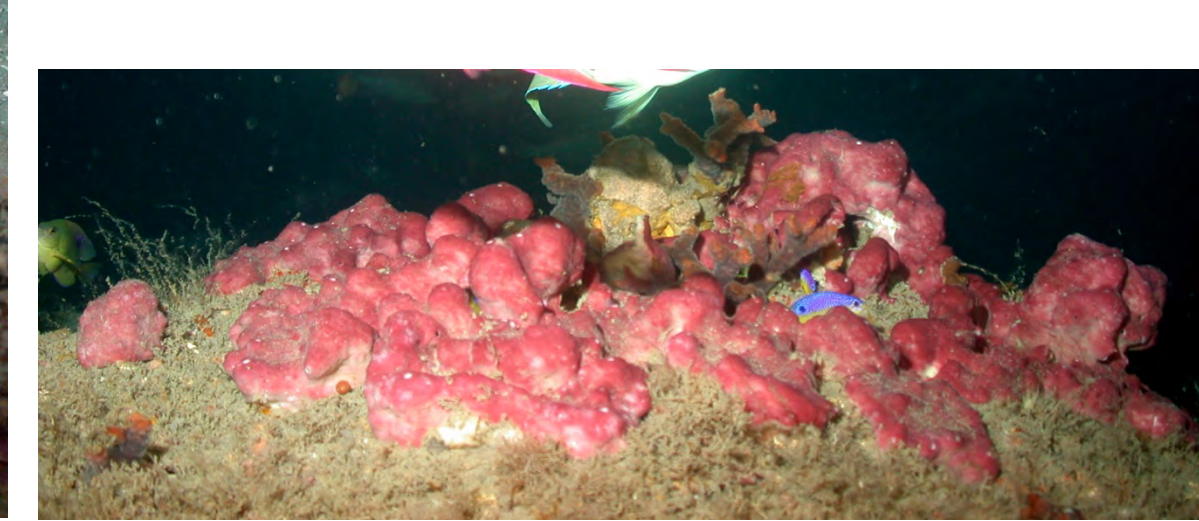
Higginsia coralloides



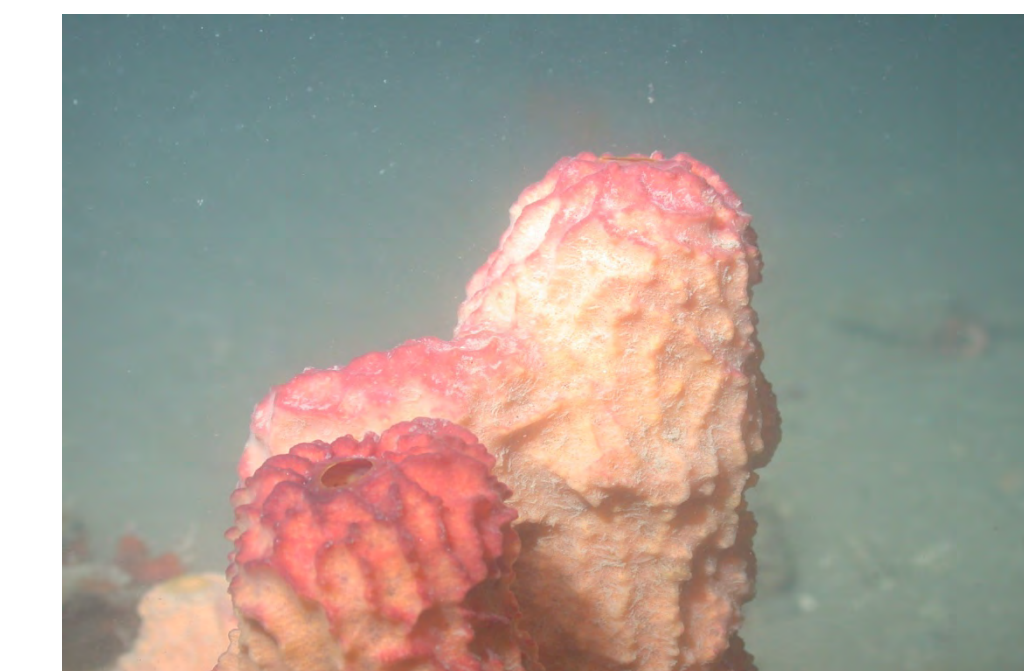
Ptilocaulis sp.



Neopetrosia sp.



Neopetrosia sp.



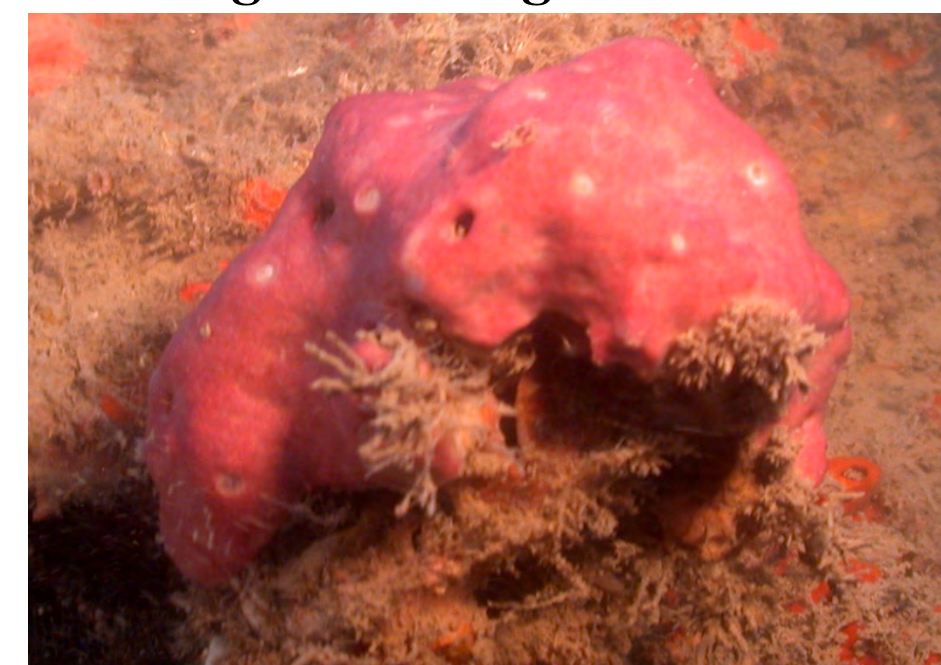
Verongula reiswigi



Verongula reiswigi



Ectoplysia ferox



Neopetrosia sp.



Higginsia coralloides



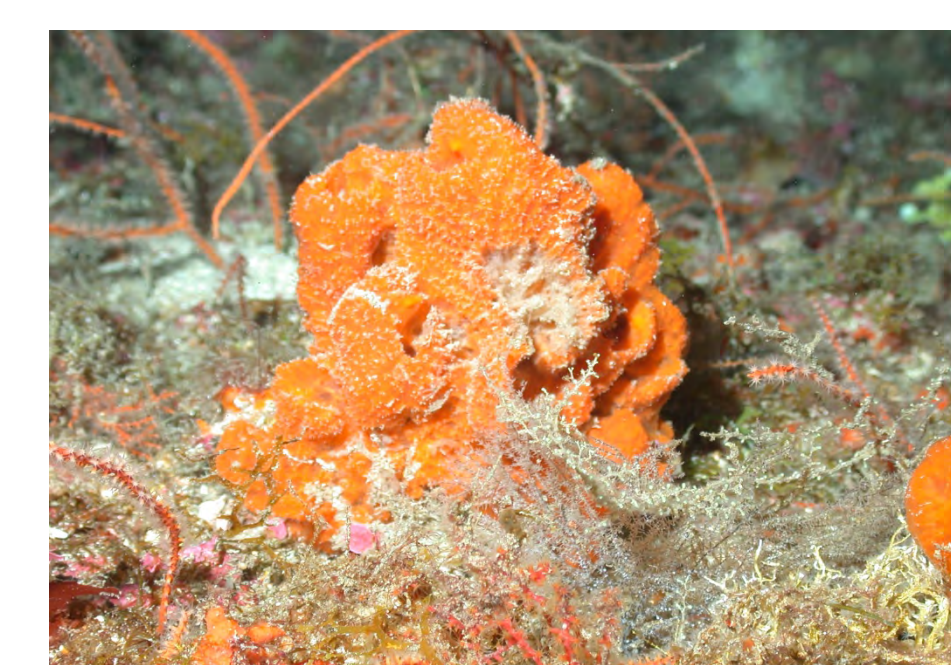
Agelas cf. *cebrum*



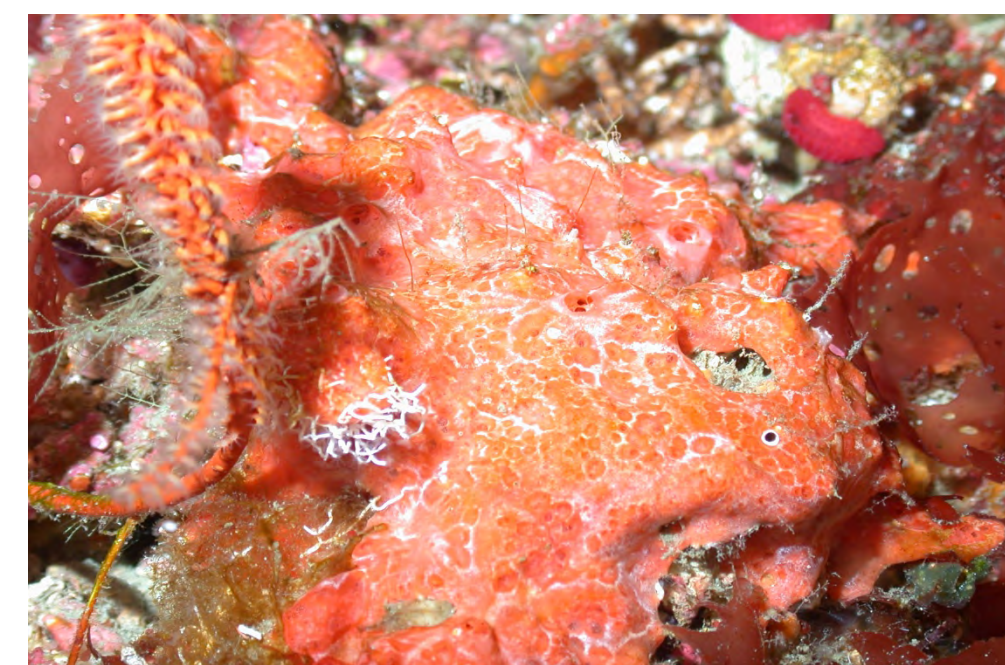
Acanthella cubensis



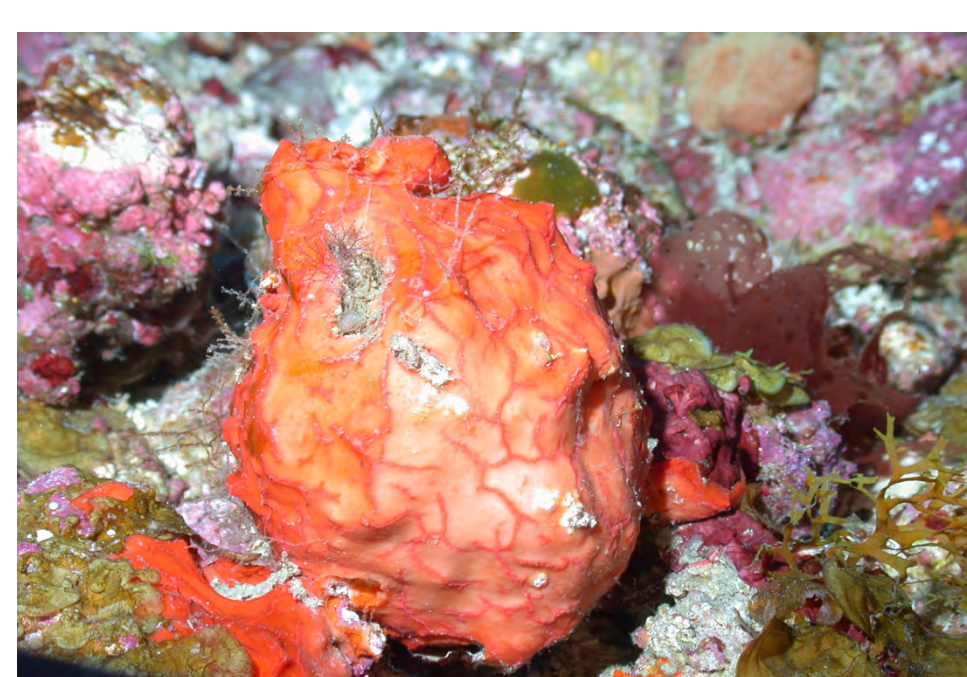
Acanthella cubensis



Acanthella cubensis



Batzella rubra



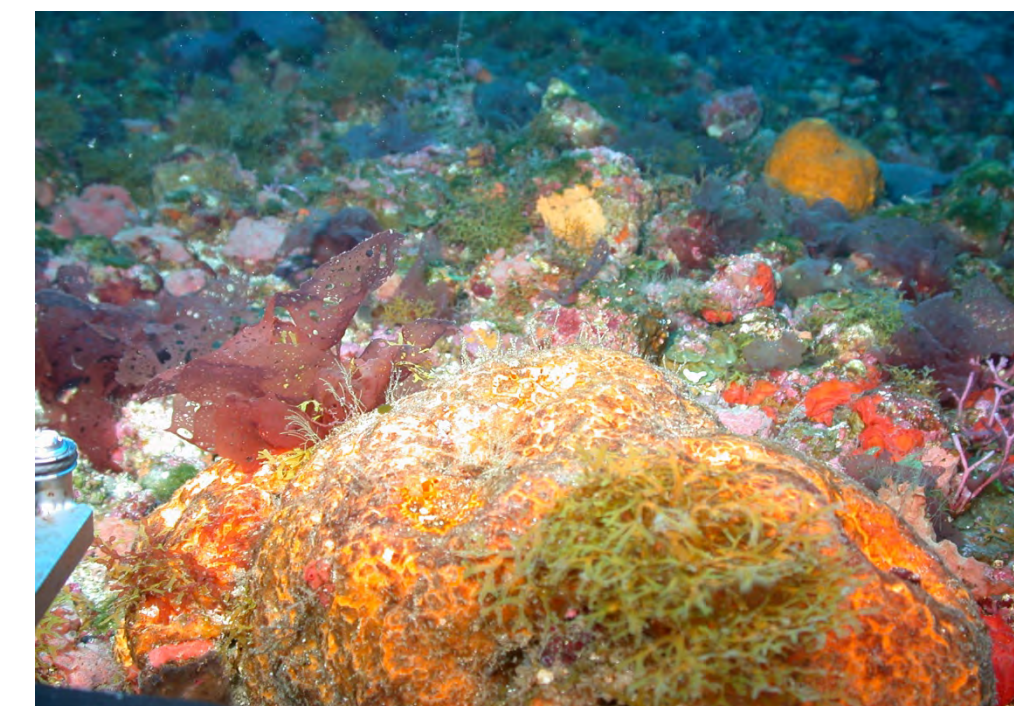
Placosphaera antillensis



Placosphaera antillensis



Didiscus oxeata



Myrmekioderma gyroderma



Auleta sycinularia



Halichondria sp.



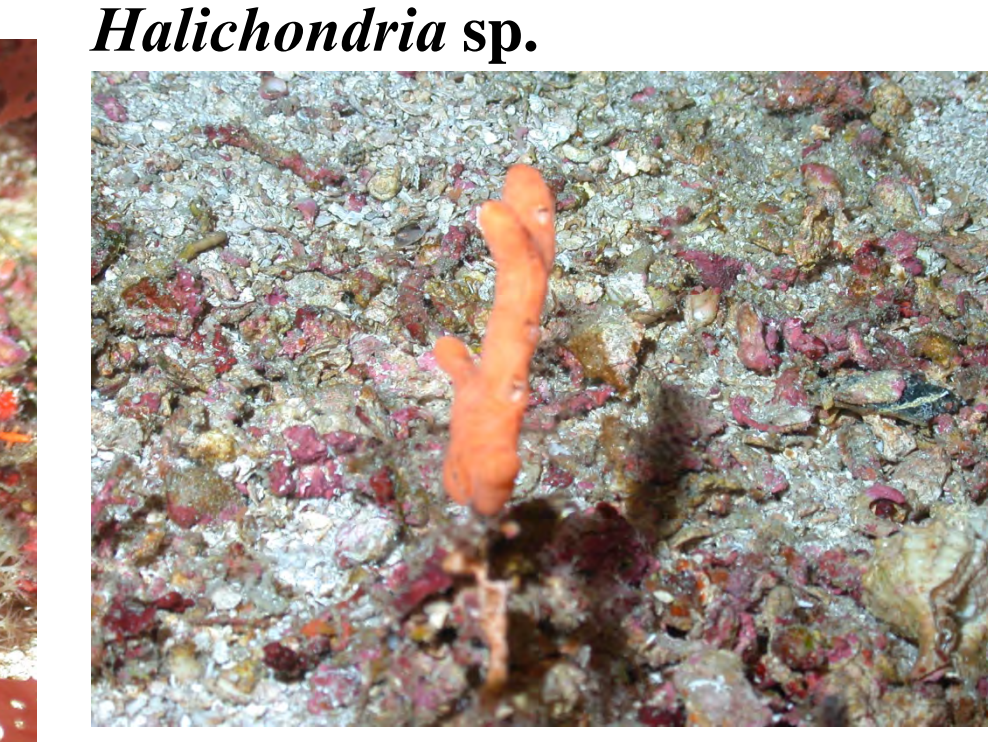
Halichondria sp.



Halichondria sp.



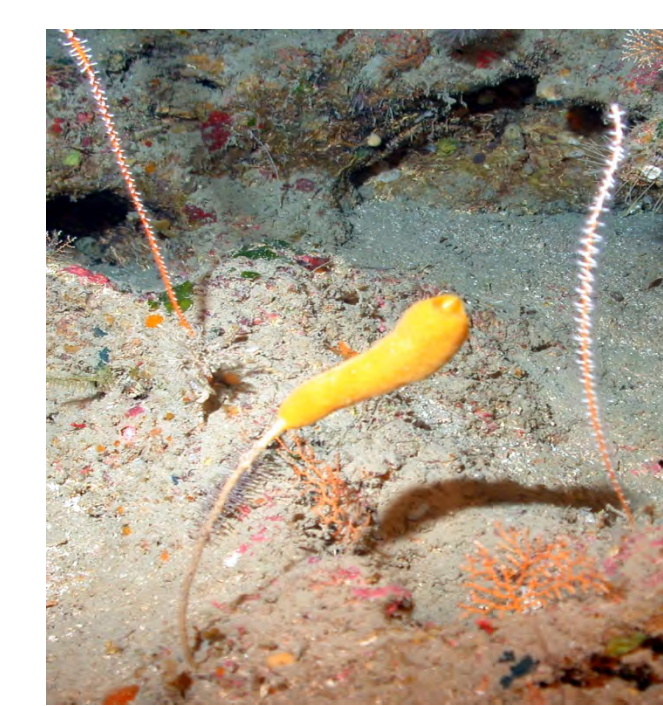
Haliclona sp.



Didemniidae ascidian



Halichondria sp.



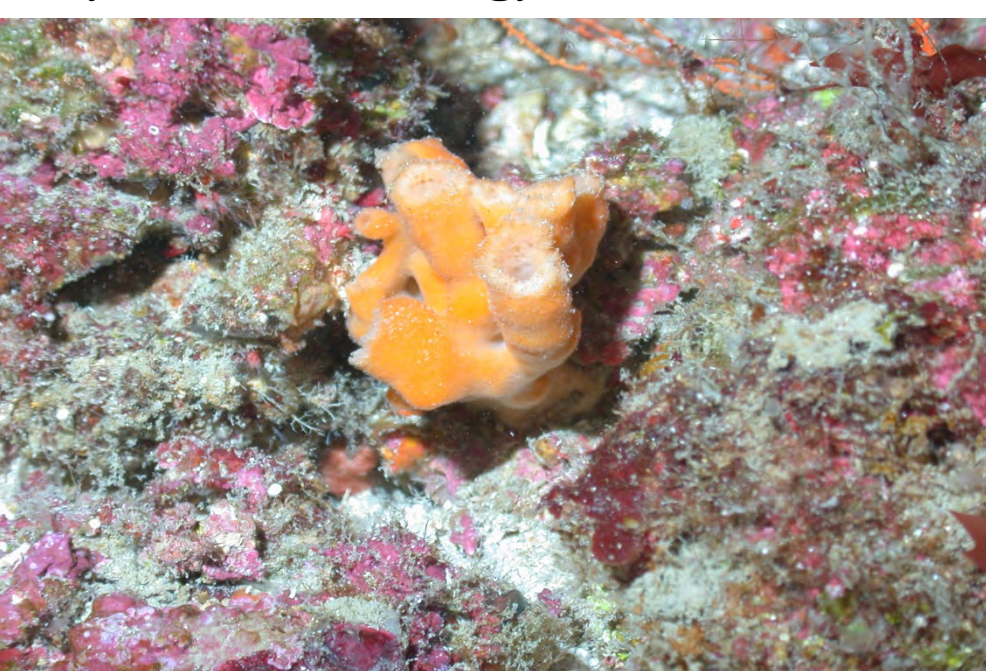
Rhizaxinella clava



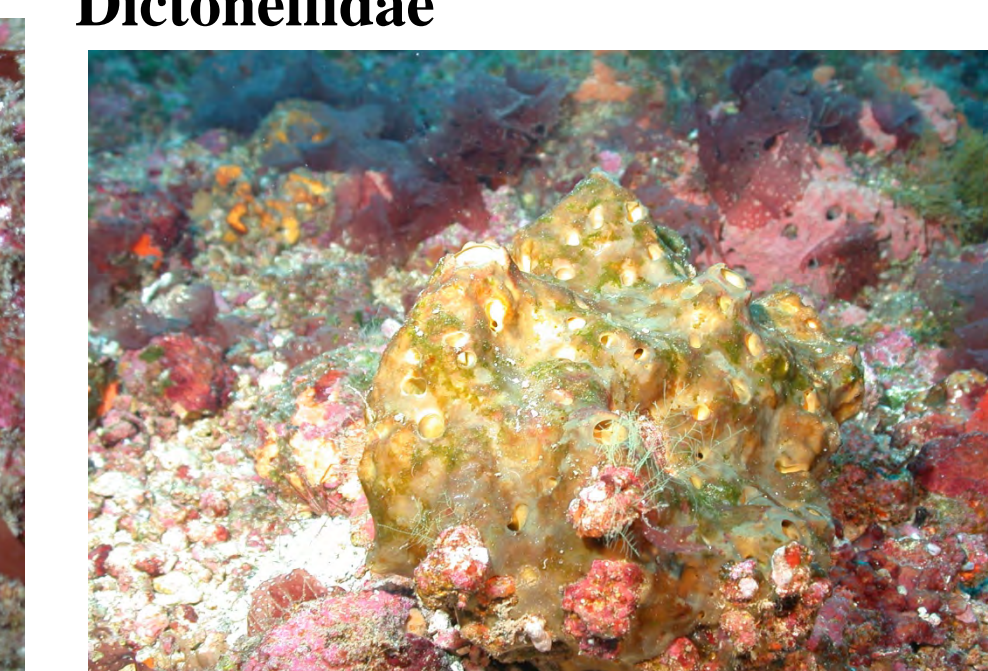
Myrmekioderma gyroderma



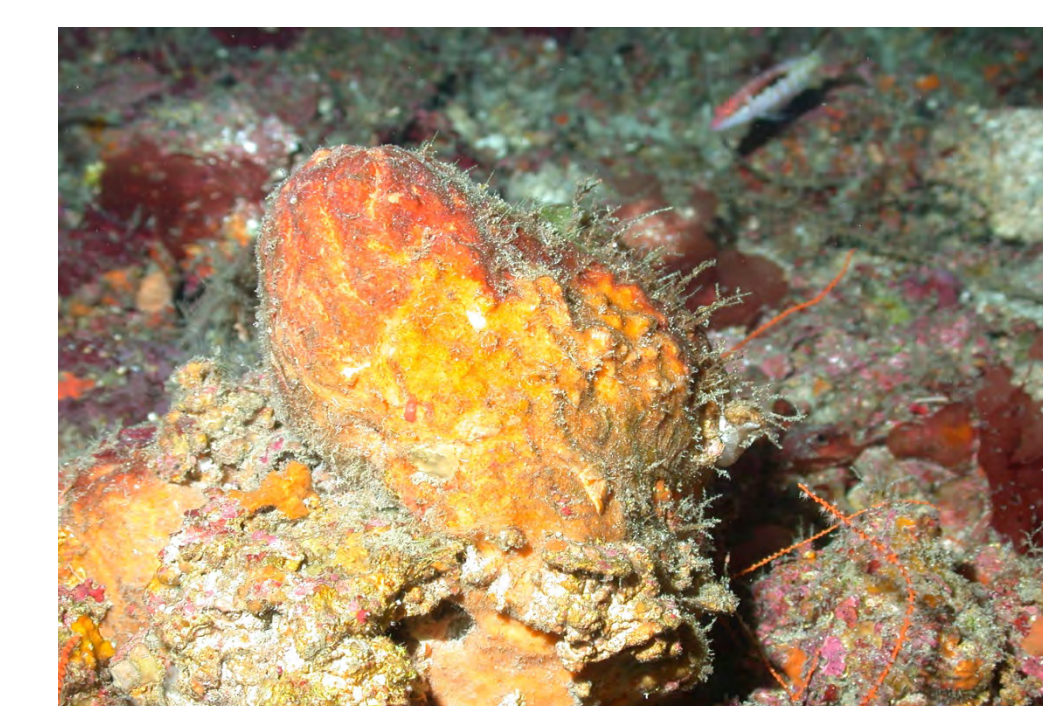
Dictyonellidae



Auleta sycinularia



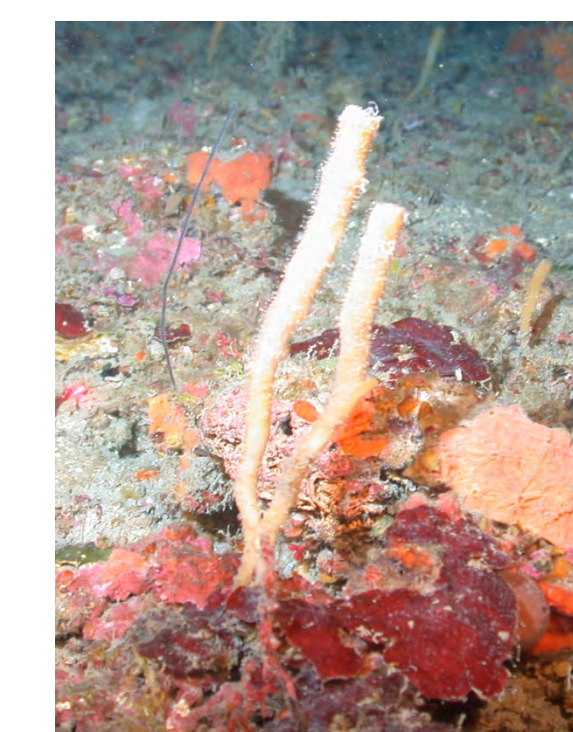
Smenospongia sp.



Myrmekioderma gyroderma



Dysidea sp.



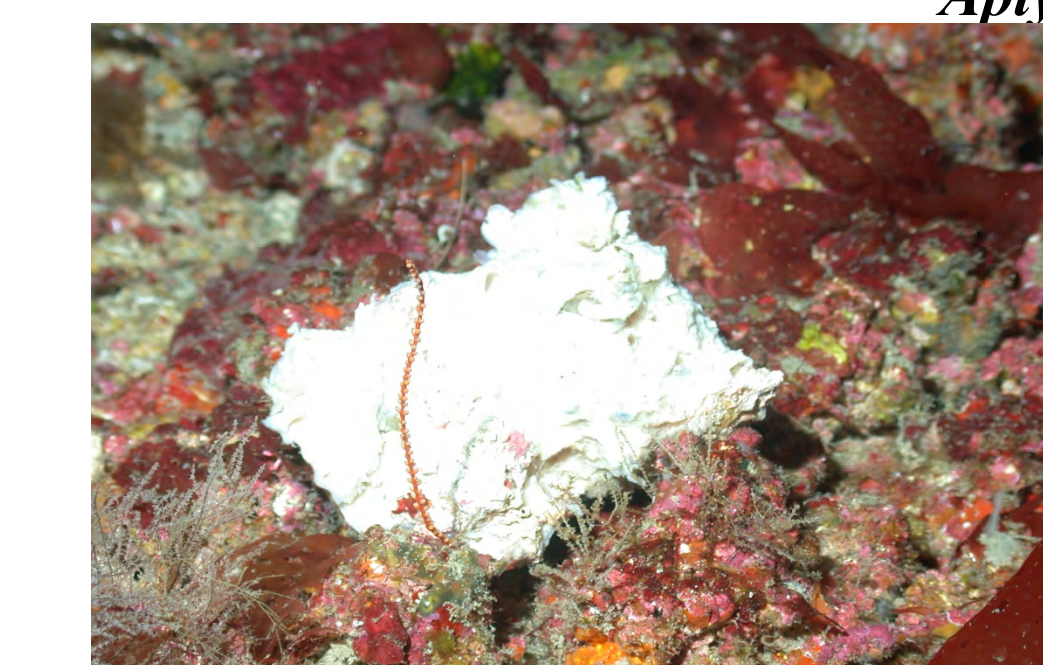
Axinellidae



Smenospongia sp.



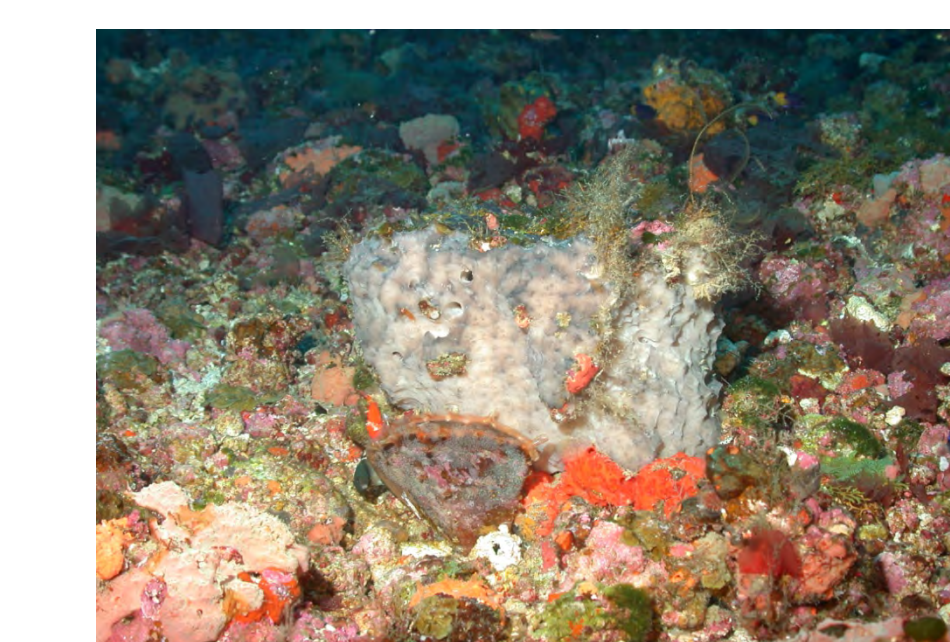
Aplysilla sulfurea



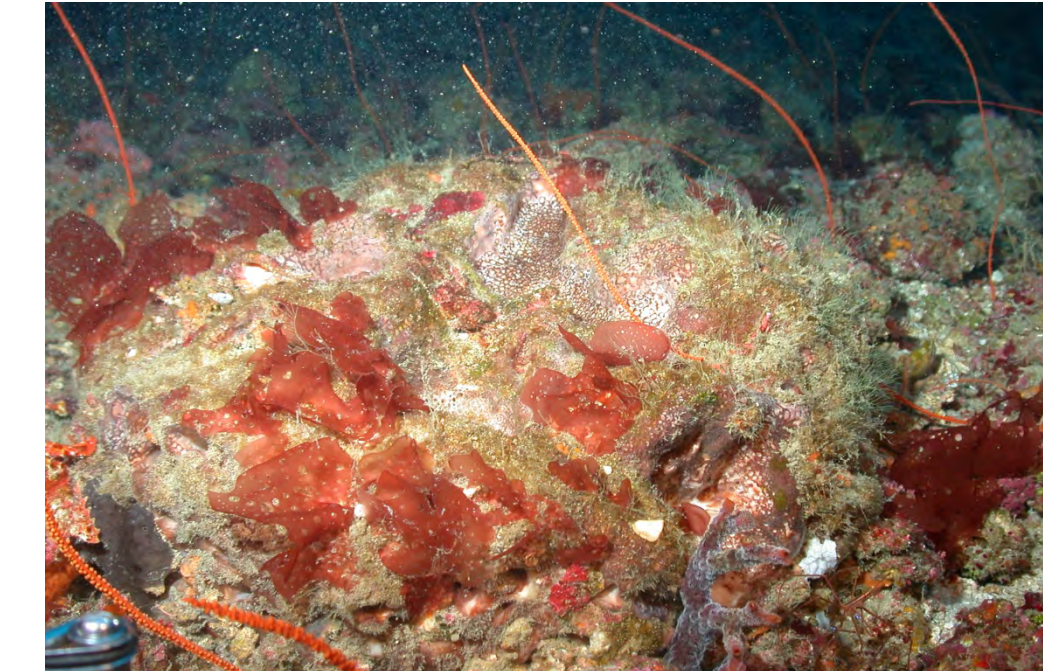
Yucatania sphaeroidocladus



Dysideidae



Erylus trisphaera



Acornia sp.



Didemniidae ascidian



Smenospongia sp.



Aplysilla sulfurea



Plakortis zygompha



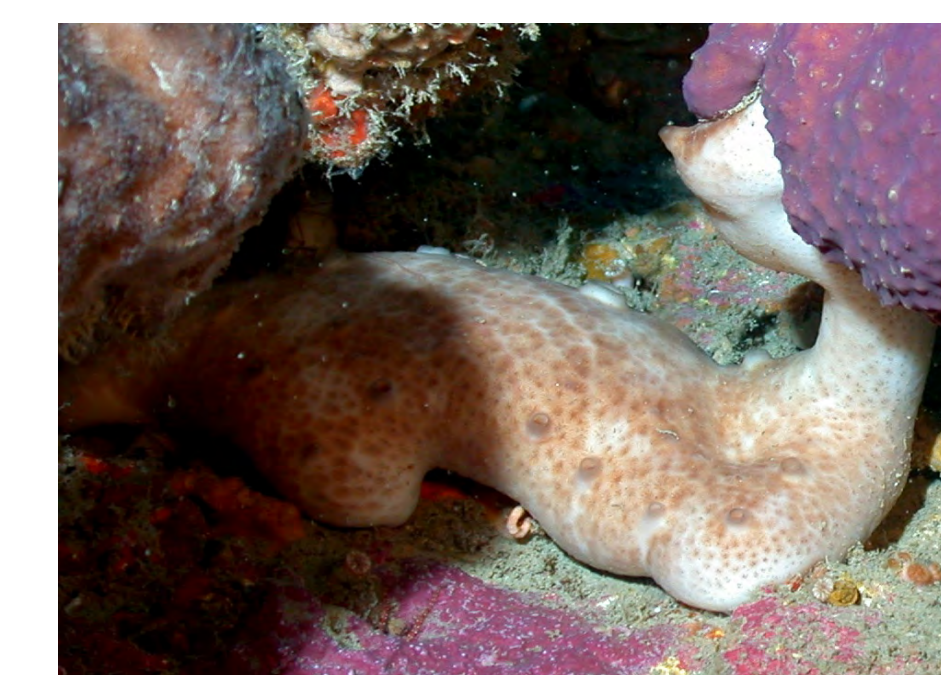
DFH9-13C



Yucatania sphaeroidocladus



DFH9-13F



Chondrosia sp.



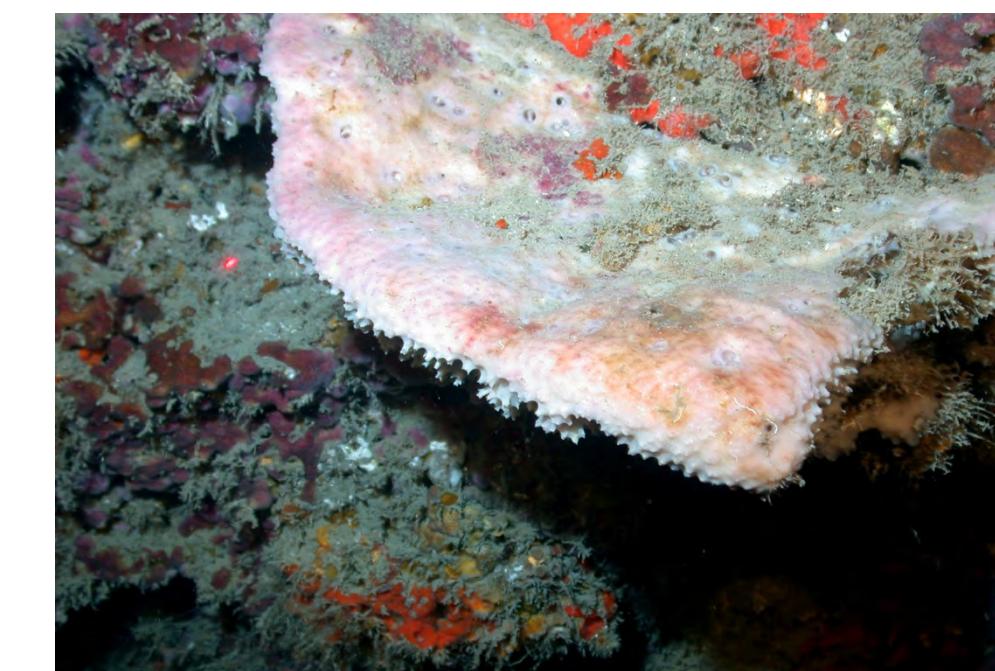
Topsentia bahamensis



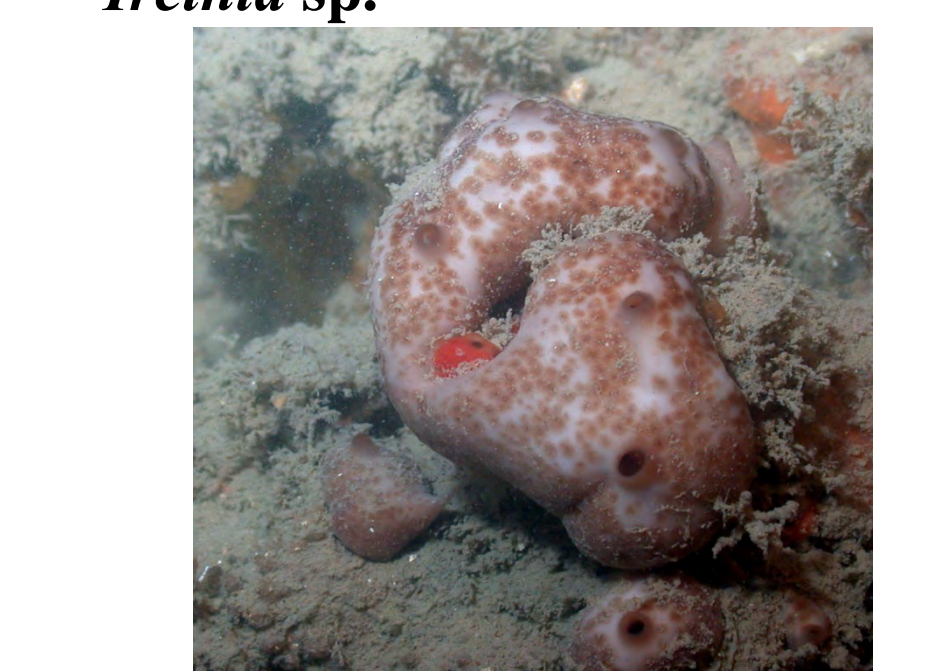
Niphates erecta



Ircinia sp.



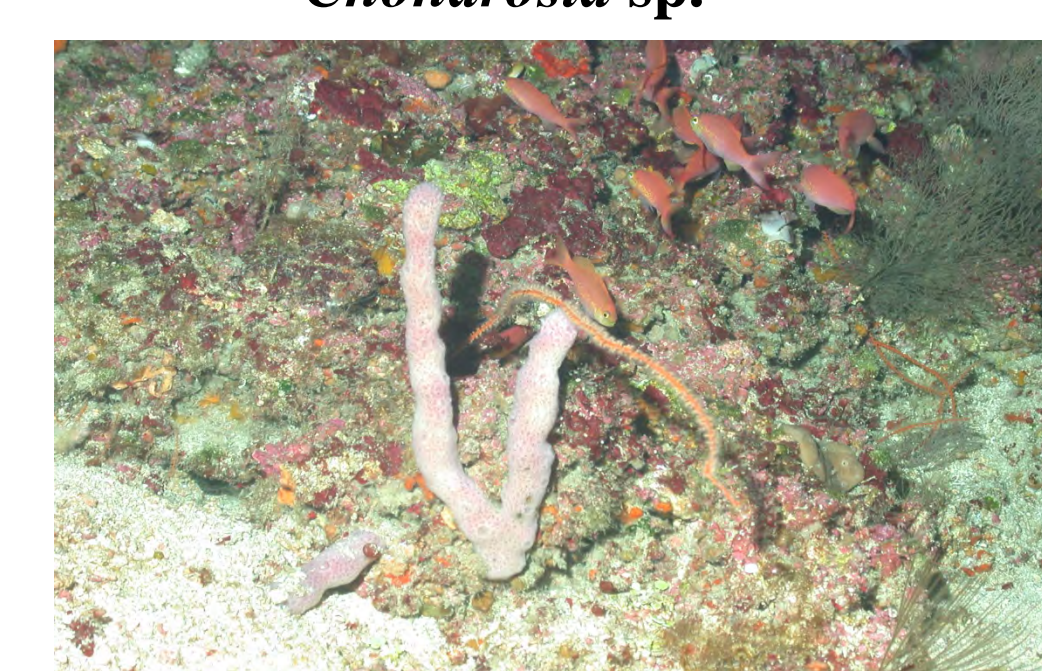
Ircinia sp.



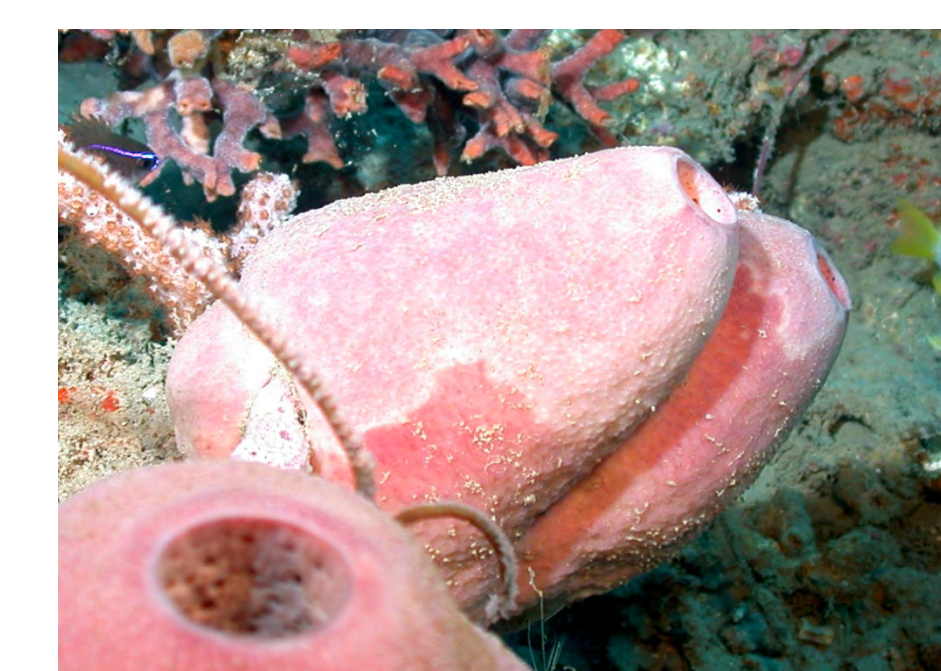
Chondrosia sp.



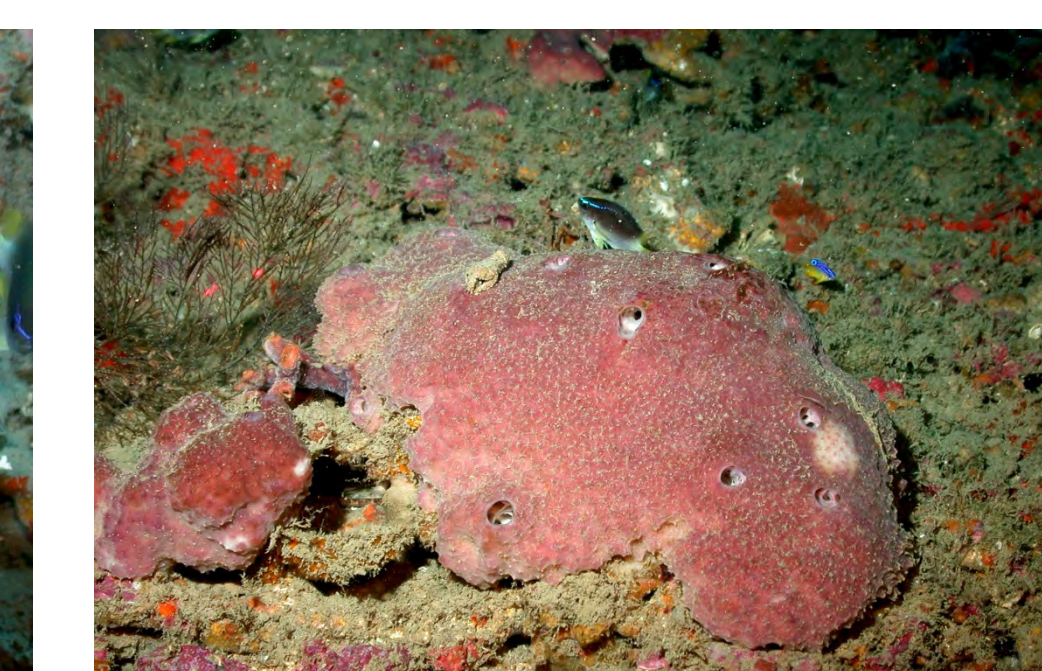
Pleraplysilla sp.



Niphates erecta



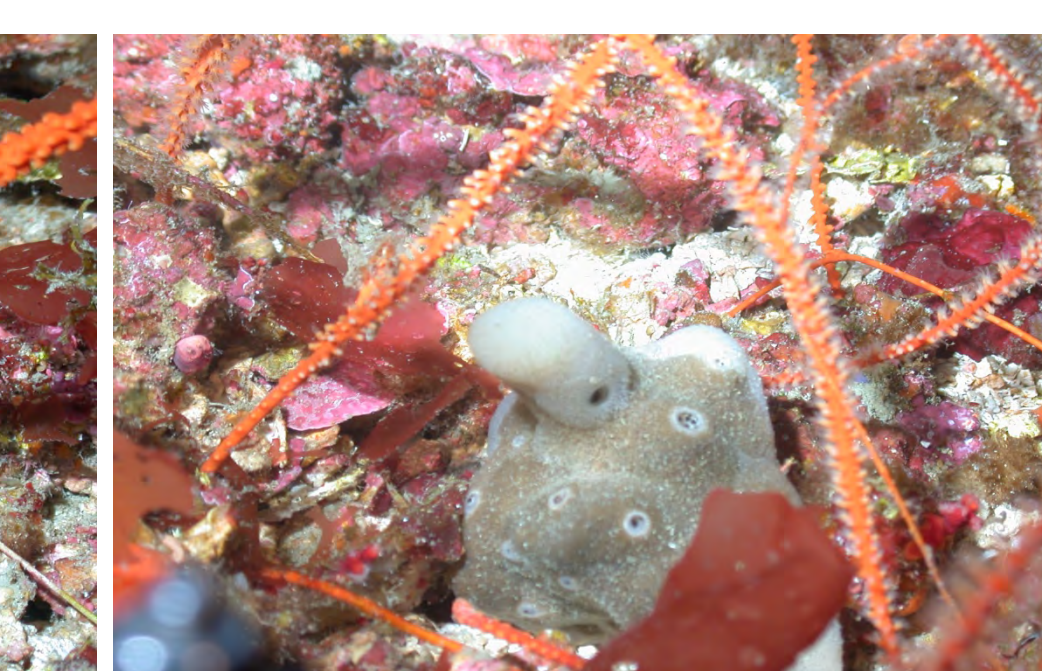
Ircinia sp.



Ircinia sp.



Petrosia sp.



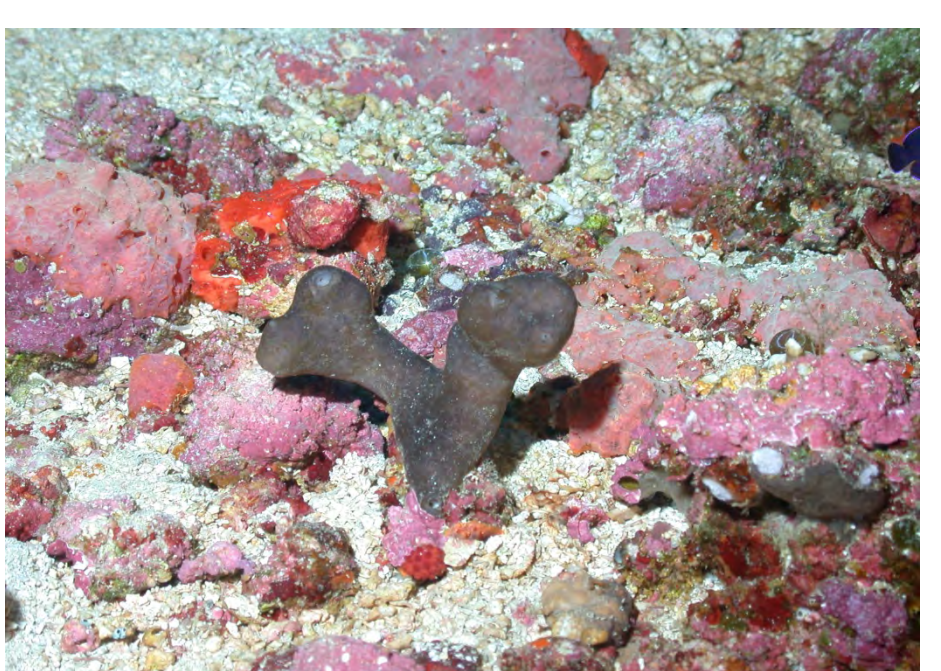
Petrosia sp.



Erylus alleni



Erylus trisphaera



Erylus alleni



Corallistes typus

The majority of these sponges were sampled at the Flower Garden Banks National Marine Sanctuary by remotely operated vehicle at depths between 162 feet and 355 feet.