

PADIS Standard Operating Procedure (SOP)

|         |  |           |   |                          |
|---------|--|-----------|---|--------------------------|
| Title:  | γH2AX Immunofluorescence Assay Antibody Qualification and Laboratory Proficiency Testing |           |   | Page 1 of 27             |
| Doc. #: | LHTP003.8.1.1  | Revision: | C | Effective Date: 4/6/2012 |

Pharmacodynamic Assay Development and Implementation Section (PADIS)

Applied Developmental Directorate

SAIC-Frederick, Inc.

Frederick National Laboratory for Cancer Research

Technical Reviewer: Lihua Wang Date: 4-6-2012  
 Secondary Reviewer: QA Review Date: 4-9-2012  
 PADIS Approval: Robert J. Kinders Date: 4-10-2012  
 LHTP Approval: Ralph E. Parchment Date: 4-11-2012  
 DCTD OD Approval: Joseph E. Tomaszewski Date: May 30, 2012

Change History

| Revision | Approval Date | Description   | Originator | Approval |
|----------|---------------|---|------------|----------|
| --       | 7/07/2010     | New Document  | YAE        | RJK      |
| A        | 12/23/2010    | Updates based on first training course. Detailed cell number calculations added to Batch Record.  | LW, TP     | RJK      |
| B        | 9/13/2011     | Preparation instructions for γH2AX-AF488 working solution updated, preparation of topotecan working solution added, and percent acceptable γH2AX-positive nuclei updated for topotecan-treated cells. Cell concentration in SOP Step 7.9.7 modified to improve automated %NAP determination.                                    | LW, TP     | RJK      |
| C        | 4/6/2012      | Dilutions for cell fixation and staining clarified and calculations added to Batch Record. References to LHTP003.8.1 updated (no longer γH2AX-specific). Change SOP Section 7.9 and 7.15 to perform γH2AX staining of spiked blood samples in the CellSearch system on-line; allows LHTP003.8.1 to be run without modification. | YAE, LW    | RJK      |

Please check for revision status of the SOP at

<http://dctd.cancer.gov/ResearchResources/ResearchResources-biomarkers.htm>

and be sure to use the current version.



Frederick



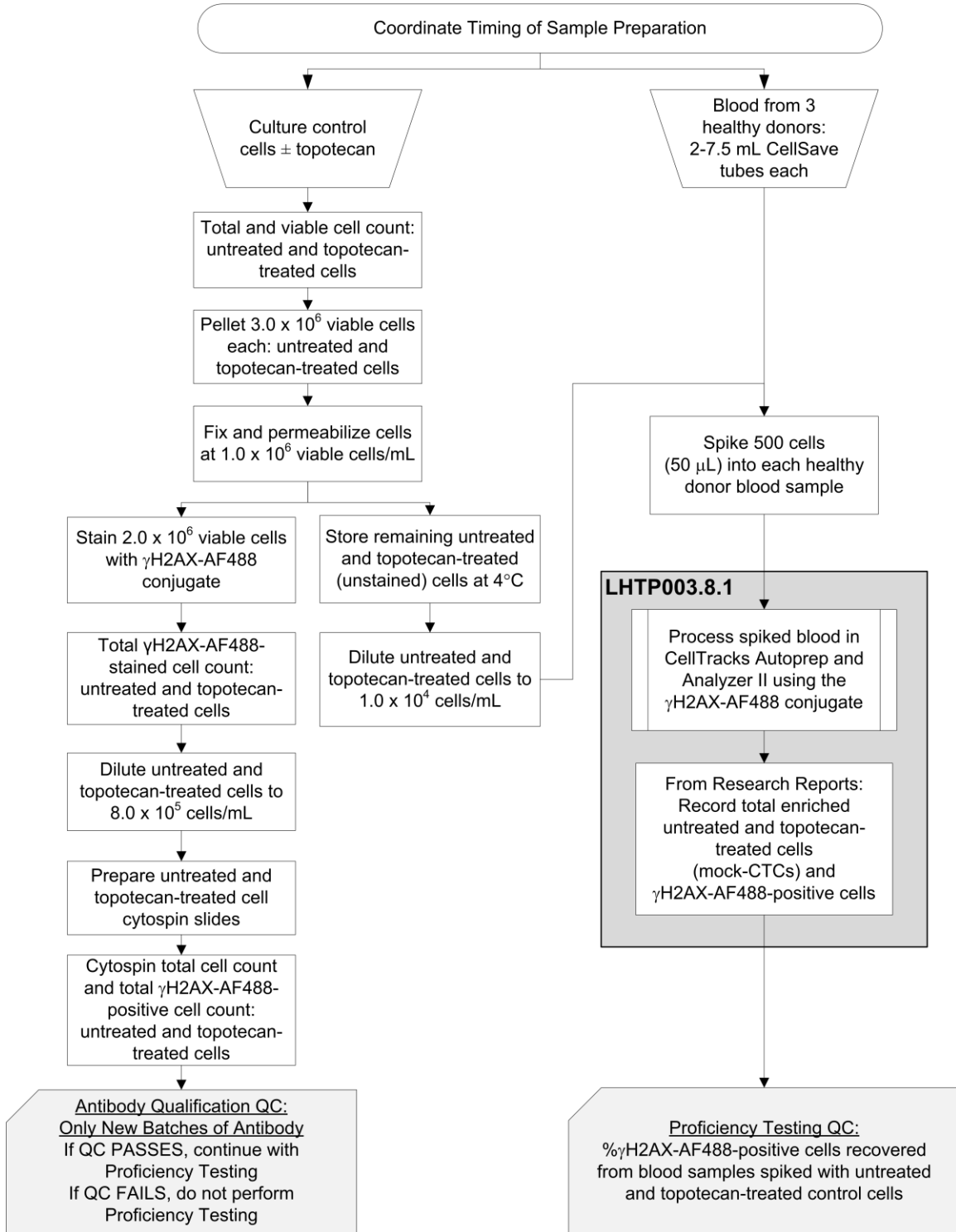
|         |  |           |   |                          |
|---------|--|-----------|---|--------------------------|
| Title:  | γH2AX Immunofluorescence Assay Antibody Qualification and Laboratory Proficiency Testing |           |   | Page 2 of 27             |
| Doc. #: | LHTP003.8.1.1  | Revision: | C | Effective Date: 4/6/2012 |

## TABLE OF CONTENTS

|  |    |
|--|----|
| OVERVIEW OF ANTIBODY QUALIFICATION AND PROFICIENCY TESTING ..... | 3  |
| 1.0 PURPOSE .....  | 4  |
| 2.0 SCOPE.....   | 4  |
| 3.0 ABBREVIATIONS .....  | 4  |
| 4.0 INTRODUCTION .....   | 4  |
| 5.0 ROLES AND RESPONSIBILITIES .....                             | 5  |
| 6.0 MATERIALS AND EQUIPMENT REQUIRED .....                       | 7  |
| 7.0 OPERATING PROCEDURES.....                                    | 9  |
| APPENDIX 1: BATCH RECORD .....                                   | 17 |
| APPENDIX 2: COMPANY-SUPPLIED WESTERN BLOT .....                  | 25 |
| APPENDIX 3: SAMPLE LABORATORY PROFICIENCY TESTING LOG .....      | 26 |
| APPENDIX 4: HEMOCYTOMETER CELL COUNT .....                       | 27 |

|         |  |           |   |                          |
|---------|--|-----------|---|--------------------------|
| Title:  | γH2AX Immunofluorescence Assay Antibody Qualification and Laboratory Proficiency Testing |           |   | Page 3 of 27             |
| Doc. #: | LHTP003.8.1.1  | Revision: | C | Effective Date: 4/6/2012 |

## OVERVIEW OF ANTIBODY QUALIFICATION AND PROFICIENCY TESTING



|         |  |           |   |                          |
|---------|--|-----------|---|--------------------------|
| Title:  | γH2AX Immunofluorescence Assay Antibody Qualification and Laboratory Proficiency Testing |           |   | Page 4 of 27             |
| Doc. #: | LHTP003.8.1.1  | Revision: | C | Effective Date: 4/6/2012 |

### 1.0 PURPOSE

Standardize the method for qualification of new batches of the γH2AX monoclonal antibody conjugated to Alexa Fluor 488 (γH2AX-AF488) and ensure all certified trainees and qualified antibodies pass laboratory proficiency testing.

### 2.0 SCOPE

All new batches of γH2AX-AF488 conjugated antibody must be qualified following this SOP before they can be used with clinical samples following SOP LHTP003.8.1 “Immunofluorescence Assay for Circulating Tumor Cells Using the CellSearch System.” Proficiency testing must be performed during initial laboratory set up, any time a new Certified Assay Operator is added to the laboratory, and each time a new batch of γH2AX-AF488 conjugated antibody is qualified. The goal of the SOP and associated training is to ensure consistency of γH2AX measurement in circulating tumor cells (CTCs) between clinical sites.

### 3.0 ABBREVIATIONS

|           |   |  |
|-----------|---|--|
| AF488     | = | Alexa Fluor 488  |
| COA       | = | Certificate of Analysis                                      |
| CTC       | = | Circulating Tumor Cell                                       |
| DAPI      | = | 4',6-Diamidino-2-Phenylindole                                |
| DCTD      | = | Division of Cancer Treatment and Diagnosis                   |
| DI        | = | Deionized  |
| EMEM      | = | Eagle's Minimum Essential Medium                             |
| FBS       | = | Fetal Bovine Serum   |
| FITC      | = | Fluorescein Isothiocyanate                                   |
| γH2AX     | = | Histone H2AX phosphorylated at serine 139                    |
| IFA       | = | Immunofluorescence Assay                                     |
| LHTP      | = | Laboratory of Toxicology and Pharmacology                    |
| PADIS     | = | Pharmacodynamic Assay Development and Implementation Section |
| PBS       | = | Phosphate Buffered Saline                                    |
| QC        | = | Quality Control  |
| RT        | = | Room Temperature   |
| SOP       | = | Standard Operating Procedure                                 |
| T25 flask | = | 25 cm <sup>2</sup> Cell Culture Flask                        |

### 4.0 INTRODUCTION

The Immunofluorescence Assay (IFA) for CTCs is an immunohistochemistry-based staining assay developed to quantify CTCs positive for a biomarker of interest using a qualified antibody conjugate. The assay uses a qualified primary antibody conjugated to FITC (or similar) dye as the reporter for immunofluorescent identification of cells. CTCs are enriched from whole blood and isolated using the CellSearch System, an automated system for the purification and enumeration of CTCs with the capability of detecting a single CTC in 7.5 mL of whole blood.

|         |  |           |   |                          |
|---------|--|-----------|---|--------------------------|
| Title:  | γH2AX Immunofluorescence Assay Antibody Qualification and Laboratory Proficiency Testing |           |   | Page 5 of 27             |
| Doc. #: | LHTP003.8.1.1  | Revision: | C | Effective Date: 4/6/2012 |

## 5.0 ROLES AND RESPONSIBILITIES

**Laboratory Director/Supervisor** The Laboratory Director/Supervisor, directs laboratory operations, supervises technical personnel, reporting of findings, and is responsible for the proper performance of all laboratory procedures. The Laboratory Director/Supervisor oversees the personnel running SOPs within the laboratory and is responsible for ensuring this person(s) is certified and has sufficient experience to handle clinical samples.

**Laboratory Scientist** A Laboratory Scientist should have at least a PhD and 3 years or an MS and 5 years of experience in assay validation and have worked in a clinical testing laboratory setting. Laboratory Scientists supervise Laboratory Technicians, review SOP results, perform assay steps requiring specialized scientific skills, and, in the absence of the Laboratory Supervisor, is responsible for the proper performance of all laboratory procedures. The Laboratory Scientist is also responsible for monitoring Batch Record preparation and following-up on any issues that arise during SOP performance that qualify as a deviation.

**Certified Assay Operator** A Certified Assay Operator **must be** a Laboratory Scientist who has been certified through DCTD training on this SOP. The Certified Assay Operator works under the guidance of the Laboratory Director/Supervisor. This person, in accordance with the current SOP(s), performs laboratory procedures and examinations and any other procedures conducted by a laboratory, including maintaining equipment and records and performing quality assurance activities related to performance.

- 5.1 It is the responsibility of the Laboratory Director/Supervisor to ensure that all Certified Assay Operators meet the criteria for the role defined as Laboratory Scientist.
- 5.2 It is the responsibility of the Laboratory Director/Supervisor to ensure that the Certified Assay Operator has received training by Veridex, LLC in the use, operation, and maintenance of the CellSearch System, including the CellTracks AutoPrep System and the CellTracks Analyzer II. Veridex certification is **required** for performance of this SOP. In addition the Certified Assay Operator must have documented DCTD training and certification on this SOP prior to the actual handling and processing of specimens from clinical trial patients.
- 5.3 It is the responsibility of the Laboratory Director/Supervisor of the specimen collection laboratory to confirm scheduled specimen collection time points, print all labels in advance, check documentation for accuracy, and verify that the required collection tubes, supplies, and equipment are available for successful isolation and preparation of CTCs.
- 5.4 Certified Assay Operators following this SOP are required to be certified in working safely with bloodborne pathogens in research laboratories in accordance with OSHA Bloodborne Pathogen Standard (29 CFR 1910.1030).
- 5.5 It is the responsibility of the Certified Assay Operator to ensure timely transport and processing of the samples, enter and review all of the required collection and processing data, and archive all data sheets in the appropriate files.

PADIS Standard Operating Procedure (SOP)

|         |  |           |   |                             |
|---------|--|-----------|---|-----------------------------|
| Title:  | γH2AX Immunofluorescence Assay Antibody Qualification and Laboratory Proficiency Testing |           |   | Page 6 of 27                |
| Doc. #: | LHTP003.8.1.1  | Revision: | C | Effective Date:<br>4/6/2012 |

- 5.6 The Certified Assay Operator responsible for carrying out the assay is to follow this SOP and complete the required tasks and associated documentation. The Batch Record (Appendix 1) must be completed in *real-time* each time a new batch of γH2AX-AF488 antibody is qualified and/or laboratory proficiency testing is verified, with each page *dated and initialed*.
- 5.7 The Certified Assay Operator is to check the DCTD Biomarkers Web site (<http://dctd.cancer.gov/ResearchResources/ResearchResources-biomarkers.htm>) to verify that the latest SOP version is being followed.

|         |  |           |   |                          |
|---------|--|-----------|---|--------------------------|
| Title:  | γH2AX Immunofluorescence Assay Antibody Qualification and Laboratory Proficiency Testing |           |   | Page 7 of 27             |
| Doc. #: | LHTP003.8.1.1  | Revision: | C | Effective Date: 4/6/2012 |

## 6.0 MATERIALS AND EQUIPMENT REQUIRED

### 6.1 Critical Reagent

**6.1.1** Custom Millipore order (PADIS item number CUS500-AX): Monoclonal anti-phospho Ser139 H2A.X, clone JBW301 (Millipore, Cat#: 05-636) conjugated to Alexa Fluor 488 (Invitrogen, Cat#: A-20000), 1 mg/mL. Store at 2°C to 8°C, protected from light.

- Request Certificate of Analysis and Western blot showing mono-specificity of the conjugate for the **exact** lot of γH2AX antibody used for the supplied conjugate.
- Millipore contact: Kathryn Nakamura, Senior Project Manager  
Custom Services, Millipore Corporation Diagnostic III  
28820 Single Oak Drive, Temecula, CA 92590  
Tel: 800-437-7500; Fax: 951-676-9209

**6.2** Pipettors (100-1000 µL, 50-200 µL, 2-20 µL) and tips

**6.3** Electronic pipettor

**6.4** 1-, 5-, 10-, and 25-mL pipettes, sterile, individually wrapped (Fisher Scientific, Cat#: 13-675-15C, 13-675-22, 13-675-20, and 13-668-2)

**6.5** 1.5-mL Sarstedt o-ring screw cap tubes (Fisher Scientific, Cat#: 72.692.005)

**6.6** 15-mL polypropylene tubes (e.g., Becton Dickinson, Cat#: 352097)

**6.7** 50-mL polypropylene tubes (e.g., Becton Dickinson, Cat#: 352098)

**6.8** Vacuum filter/storage bottle system, 0.22-µm pore, 500 mL (e.g., Corning, Cat#: 431097)

**6.9** Cell culture flask, 25 cm<sup>2</sup>, vent cap (T25; e.g., Corning, Cat#: 3289)

**6.10** CellSave Preservative Tubes, 100-pack (Veridex, Cat#: 7900005)

**6.11** Kimwipes (Fischer Scientific, Cat#: 06-666A)

**6.12** Solvent-resistant laboratory marker

**6.13** Hemocytometer and cover slips

**6.14** Deionized (DI) water, sterile

**6.15** 10X phosphate buffered saline (PBS; Invitrogen, Cat#: 70013-073) [Dilute 1:10 in DI water to prepare 1X PBS for use in assay]

**6.16** Eagle's Minimum Essential Medium (EMEM), 500-mL bottles (ATCC, Cat#: 30-2003) for MCF7 cells or McCoy's 5a Medium Modified, 500-mL bottles (ATCC, Cat#: 30-2007) for HT-29 cells

**6.17** Gentamicin sulfate, 50000 mg/L (BioWhittaker, Cat#: 17-518)

**6.18** Fetal bovine serum, 500-mL bottles (FBS; Gemini Bio-Products, Cat#: 100-106) [Store at -20°C as 50-mL aliquots in 50-mL polypropylene tubes]

**6.19** Trypan blue, 0.4% solution (Sigma-Aldrich, Cat#: T8154)

**6.20** Trypsin-EDTA Solution, 1x (0.25% Trypsin/0.53 mM EDTA, ATCC, Cat# 30-2101 ) or Trypsin-Versene mixture (Lonza, Cat#: 17-161E)

**6.21** Topotecan hydrochloride (Hycamtin, GlaxoSmithKline; order by prescription through a clinical center). Dissolve in DI water to make a 10 mM stock solution, aliquot, and store at -80°C.

**6.22** 100% ethanol – histology grade, filtered using 0.22-µm pore size [dilute in DI water to prepare 70% ethanol for use in assay]

**6.23** BD Cytotfix/Cytoperm Fixation/Permeabilization Solution Kit (BD Biosciences, Cat#: 554714) [contains BD Cytotfix/Cytoperm solution and 1X BD Perm/Wash Buffer]

**6.24** Bond Wash Solution 10X Concentrate (Leica Microsystems, Cat#: AR9590) [Dilute 1:10 in DI water to prepare 1X Wash Solution for use in assay]

**6.25** ProLong Gold antifade reagent with DAPI (Invitrogen, Cat#: P36931)

PADIS Standard Operating Procedure (SOP)

|         |  |           |   |                          |
|---------|--|-----------|---|--------------------------|
| Title:  | γH2AX Immunofluorescence Assay Antibody Qualification and Laboratory Proficiency Testing |           |   | Page 8 of 27             |
| Doc. #: | LHTP003.8.1.1  | Revision: | C | Effective Date: 4/6/2012 |

- 6.26** MCF7 human breast adenocarcinoma (ATCC, Cat#: HTB-22) or HT-29 human colorectal adenocarcinoma (ATCC, Cat#: HTB-38) cells
- 6.27** Blood from 3 healthy human donors, two tubes per donor with a minimum of 7.5 mL volume per collection
- 6.28** Automated cell counter (optional; e.g., Cellometer Auto T4 instrument [Nexcelom])
- 6.29** Table-top centrifuge with a swing-bucket rotor
  - 6.29.1** Sorvall Legend RT centrifuge (Fisher Scientific) with a Swing Bucket Rotor (Fisher Scientific, Cat#: 75-006-434) and manufacturer-recommended tube adaptors
- 6.30** Cytocentrifuge (200 x g speed required) and slides with cytology funnels.
  - 6.30.1** Shandon Cytospin 4 cytocentrifuge (Fisher Scientific, Cat#: A78300002) and Shandon cytology funnel with white filter cards (Fischer Scientific, Cat#: A78710003 )
  - 6.30.2** CytoFuge 2 cytocentrifuge (Fisher Scientific, Cat#: 22-001-1) and cell filter concentrators, disposable (Fisher Scientific, Cat#: 04-981-1)
- 6.31** Fluorescent microscope with 200X objective
- 6.32** DAPI (e.g., Chroma A4 filter, BP 360/40) and FITC (e.g., Chroma L5 filter, BP 480/40) filter sets
- 6.33** CCD camera optional
- 6.34** Class II Type A2 biosafety cabinet/tissue culture hood
- 6.35** 37°C tissue culture incubator, humidified, 5% CO<sub>2</sub>
- 6.36** -20°C freezer
- 6.37** 4°C refrigerator
- 6.38** SOP LHTP003.8.1 (Immunofluorescence Assay for Circulating Tumor Cells Using the CellSearch System) available on the [DCTD Biomarkers Web site](#).

\* If instruments and/or reagents differ from those specified above, the Certified Assay Laboratory performing the assay must prove their comparability or equivalence to those recommended using the manufacturer's specifications and experimental validation data.



|         |  |           |   |                          |
|---------|--|-----------|---|--------------------------|
| Title:  | γH2AX Immunofluorescence Assay Antibody Qualification and Laboratory Proficiency Testing |           |   | Page 9 of 27             |
| Doc. #: | LHTP003.8.1.1  | Revision: | C | Effective Date: 4/6/2012 |

## 7.0 OPERATING PROCEDURES

**7.1** Prior to beginning antibody qualification and/or laboratory proficiency testing, carefully examine the planned timing of healthy blood donor collection and cell line culture confluence.

**7.1.1** Patient blood samples must be processed within 96 h of collection in CellSave Preservative Tubes.

**7.1.2** Two 25 cm<sup>2</sup> cell culture flasks (T25 flasks) of cells should be ~80% confluent on the day the SOP is run.

**7.2** Record the name, Veridex certification number, and DCTD certification number of the Certified Assay Operator and the facility running the SOP in the Batch Record (Appendix 1).

**7.3** Document the reason for running the protocol in the Batch Record (Appendix 1, Section 1).

**Note:** SOP Steps 7.11 - 7.13 are unique to antibody qualification; all other steps are required for both antibody qualification and laboratory proficiency testing.

### 7.3.1 Antibody Qualification:

7.3.1.1 If a new batch of γH2AX-AF488 conjugate antibody is being qualified, Millipore should provide a Western blot showing mono-specificity of the γH2AX antibody using the **exact** lot of γH2AX antibody used to make the conjugate (Appendix 2).

7.3.1.2 Qualification of a new batch of antibody **also** requires completion of laboratory proficiency testing, and can be performed with the same untreated and topotecan-treated MCF7 or HT-29 cell samples.

### 7.3.2 Laboratory Proficiency Testing:

7.3.2.1 Must be performed during initial laboratory set up, any time a new certified assay operator is added to the laboratory, and each time a new batch of γH2AX-AF488 conjugate antibody is qualified.

7.3.2.2 The proficiency panel for this test is 3 healthy donor blood samples spiked with untreated or topotecan-treated MCF7 or HT-29 cells and then assayed using the CellSearch System as if they were clinical samples.

7.3.2.3 Laboratory proficiency testing can only be performed using a qualified batch of γH2AX-AF488 conjugate.

7.3.2.4 A proficiency testing log (sample in Appendix 3) should be maintained along with the Batch Records to document laboratory compliance.

**7.4** In the Batch Record, record the date the γH2AX-AF488 conjugate being used in the assay was received as well as the lot number of the γH2AX antibody used to make the conjugate (Appendix 1, Section 2). If a qualified antibody is being used and only laboratory proficiency testing is being performed, record the date of antibody qualification.

**7.5** Record manufacturer information of key equipment, in the Batch Record (Appendix 1, Section 3). All reagents are to be labeled with date of receipt and stored under the specified conditions for no longer than the recommended duration.

|         |  |           |   |                          |
|---------|--|-----------|---|--------------------------|
| Title:  | γH2AX Immunofluorescence Assay Antibody Qualification and Laboratory Proficiency Testing |           |   | Page 10 of 27            |
| Doc. #: | LHTP003.8.1.1  | Revision: | C | Effective Date: 4/6/2012 |

## 7.6 Healthy Donor Blood Collection

- 7.6.1** Two (2) CellSave tubes containing at least 7.5-mL of blood will be needed from 3 different healthy donors for proficiency testing (6 tubes total).
- 7.6.1.1 Two identical, pre-printed specimen labels should be prepared for each healthy donor. Labels should include donor number (e.g., Donor 1, 2, and 3), collection date, and space to write the actual collection time.
- 7.6.2** Blood sample collection laboratory personnel should ensure that the phlebotomist is using the recommended CellSave Preservative Tube to draw the blood samples; if necessary, supply the phlebotomist with the correct tubes. A minimum of 7.5 mL of blood should be collected into the tubes for each blood draw.
- 7.6.3** Be sure the phlebotomist or sample collection laboratory personnel place the pre-printed labels onto the freshly collected CellSave tubes for identification.
- 7.6.4** Blood samples should be mixed immediately by gently inverting the tube 8 times to prevent clotting.
- 7.6.5** Write the actual time of blood sample collection on the pre-printed label. Record the date and time the blood was collected and verify that 2 tubes were collected for each donor, 6 tubes total, in the Batch Record (Appendix 1, Section 4).
- 7.6.6** Samples should be kept at RT (15°C to 25°C); **do not** place on ice or refrigerate. Patient blood samples are stable for 96 h in CellSave Preservative Tubes at RT.

## 7.7 Cell Line Preparation

- 7.7.1** In the Batch Record, indicate which cell lines are being used as the control cell lines (Appendix 1, Section 5A). Cells maintained in tissue culture should be regularly split to maintain overall cell line health. Cells should be cultured for no longer than 30 passages before using a fresh vial of cells.
- 7.7.2** Use sterile technique to prepare culture media; media can be prepared ahead of time. Prepare EMEM medium for MCF7 cells and McCoy's 5a medium for HT-29 cells.
- 7.7.2.1 For one 500-mL bottle of medium, thaw a 50-mL aliquot of FBS in a 37°C water bath, then move to the tissue culture hood and clean the outside of tube with 70% ethanol.
- 7.7.2.2 Using a disposable filter unit and sterile technique, filter 500 mL medium with 50 mL FBS and 0.5 mL of 10 µg/mL gentamicin sulfate.
- 7.7.2.3 Label bottle with lot number and expiration dates (if applicable) of media components and date of preparation. Store at 2°C to 8°C until use.
- 7.7.3** Pre-warm medium in a 37°C water bath and 1X PBS and trypsin at RT for 15 to 20 min.
- 7.7.4** Record the date and current passage number of the cells in the Batch Record and verify that two T25 flasks are ~80% confluent (Appendix 1, Section 5A).
- 7.7.5** Prepare 1 mL of a 100 µM topotecan working solution by adding 10 µL of a 10 mM topotecan stock solution into 990 µL sterile 1X PBS in a sterile eppendorf tube. Cap and invert tube 5 to 8 times to mix.

PADIS Standard Operating Procedure (SOP)

|         |  |           |   |                          |
|---------|--|-----------|---|--------------------------|
| Title:  | γH2AX Immunofluorescence Assay Antibody Qualification and Laboratory Proficiency Testing |           |   | Page 11 of 27            |
| Doc. #: | LHTP003.8.1.1  | Revision: | C | Effective Date: 4/6/2012 |

- 7.7.6** In a 15-mL propylene tube, add 100 μL of 100 μM topotecan working solution into 10 mL fresh medium (1 μM final concentration).
- 7.7.7** In one T25 flask, aspirate old medium, add 10 mL fresh medium + 1 μM topotecan, and label it “topotecan-treated.” Record the time that topotecan is added in the Batch Record (Appendix 1, Section 5B). Label the other flask “untreated.” Incubate flasks for 2 h at 37°C in 5% CO<sub>2</sub>.
- 7.7.8** Wash the cells, twice with RT 1X PBS, noting the first wash time in the Batch Record (Appendix 1, Section 5B).
- 7.7.9** Aspirate PBS, add 0.5 mL RT trypsin to each flask, and incubate for 2 to 10 min at 37°C. Record the time trypsin is added to the flasks in the Batch Record (Appendix 1, Section 5C) until cells disperse. Monitor this process under an inverted microscope. To avoid generating cell sheets or clumps, do not agitate the cells by tapping or shaking the flask while waiting for the cells to detach.
- 7.7.10** Add 8 mL culture medium containing 10% FBS to each flask and pipette cell suspension into 15-mL polypropylene tubes labeled as “untreated” or “topotecan-treated.” Record the time culture medium is added to the flasks in the Batch Record (Appendix 1, Section 5C).
- 7.7.11** Gently pellet cells by centrifugation in a swing-bucket rotor at 200 x g for 5 min. Carefully remove the trypsin solution and resuspend each cell pellet in 5 mL 1X PBS.
- 7.8 Total and Viable Cell Count**
- 7.8.1** Immediately after resuspending the cell pellets, prepare a 1:5 dilution of the untreated and topotecan-treated samples by transferring 20 μL of each cell suspension into a labeled microtube containing 60 μL 1X PBS and 20 μL of 0.4% trypan blue. Gently mix by pipetting (100 μL final volume).
- 7.8.2** Determine the total and viable cell counts for both untreated and topotecan-treated cells using a hemocytometer (or automated cell counter) and record the following information for both the untreated and topotecan-treated samples in the Batch Record (Appendix 1, Section 6A; see Appendix 4 for information on hemocytometer use):
- Total cell count in each hemocytometer corner square that was counted
  - Total viable cell count in each hemocytometer corner square that was counted
  - Dilution factor
  - The calculated total cells/mL, total cells, viable cells/mL, total viable cells, and percent viability
- 7.8.3** Cells must be ≥ 90% viable to be used for antibody qualification and laboratory proficiency testing. Indicate whether the untreated and topotecan-treated samples **Pass** or **Fail** percent viability QC in the Bath Record (Appendix 1, Section 6A).
- 7.8.3.1** If either the untreated or topotecan-treated cells **Fail** percent viability QC (< 90% viable), both sets of cells should be discarded. A fresh culture of cells will need to be used for antibody qualification and/or proficiency testing and a new Batch Record should be started.

|         |  |           |   |                          |
|---------|--|-----------|---|--------------------------|
| Title:  | γH2AX Immunofluorescence Assay Antibody Qualification and Laboratory Proficiency Testing |           |   | Page 12 of 27            |
| Doc. #: | LHTP003.8.1.1  | Revision: | C | Effective Date: 4/6/2012 |

**7.8.4** Using the calculations in Appendix 1, Section 6B, aliquot  $3.0 \times 10^6$  viable cells for both the untreated and topotecan-treated lines into labeled 15-mL polypropylene tubes for permeabilization and fixation; excess cells can be discarded.

**7.8.5** Gently pellet the  $3.0 \times 10^6$  viable cells for each cell treatment by centrifugation in a swing-bucket rotor at  $200 \times g$  for 5 min, without the brake.

## 7.9 Cell Permeabilization and Fixation

**7.9.1** Resuspend each cell pellet in 3 mL BD Cytotfix/Cytoperm for a final concentration of  $1.0 \times 10^6$  viable cells/mL and incubate for 20 min at  $2^\circ\text{C}$  to  $8^\circ\text{C}$ . Record the start and end times in the Batch Record (Appendix 1, Section 7).

**7.9.2** While cells are fixing, prepare 1.1 mL of a  $5 \mu\text{g/mL}$  γH2AX-AF488 working solution as outlined in Appendix 1, Section 8A (preparing 10% extra). Gently pipette up and down to mix and store at  $2^\circ\text{C}$  to  $8^\circ\text{C}$ , or on ice, in the dark until use.

**Note:**  $5 \mu\text{g/mL}$  is the recommended initial test concentration for the γH2AX-AF488 antibody. Use the calculations in Appendix 1, Section 8B if additional concentrations need to be tested.

**7.9.3** Gently pellet the fixed cells by centrifugation in a swing-bucket rotor at  $500 \times g$  for 5 min, without the brake. Wash fixed cells with 3 mL 1X BD Perm/Wash Buffer and pellet the cells in a swing-bucket rotor at  $500 \times g$  for 5 min. Carefully remove the buffer and wash and pellet the cells a second time. **Note:** 1X BD Perm/Wash Buffer is used in washing steps to keep cells permeabilized.

**7.9.4** Resuspend each fixed and permeabilized cell pellet in 3 mL 1X BD Perm/Wash Buffer for a final concentration of  $1.0 \times 10^6$  viable cells/mL.

**7.9.5** For γH2AX-AF488 staining (next step), label two (2) 15-mL polypropylene tubes as “untreated” and “topotecan-treated.” Transfer 2 mL of the  $1.0 \times 10^6$  viable cells/mL untreated and topotecan-treated cell suspensions into the correctly labeled tube.

7.9.5.1 Save the remaining 1 mL of  $1.0 \times 10^6$  viable cells/mL suspensions in their original 15-mL polypropylene tubes at  $2^\circ\text{C}$  to  $8^\circ\text{C}$  for CellSearch analysis in SOP Step 7.14.

## 7.10 γH2AX-AF488 Staining

**7.10.1** Using the 2 mL of aliquoted cells ( $2.0 \times 10^6$  cells), pellet the cells in a swing-bucket rotor at  $500 \times g$  for 5 min. Carefully remove the buffer.

**7.10.2** Resuspend each pellet in 0.5 mL of the γH2AX-AF488 working solution. Incubate for 30 min at  $2^\circ\text{C}$  to  $8^\circ\text{C}$  in the dark. Record the start and end time of γH2AX-AF488 staining in the Batch Record (Appendix 1, Section 8A).

**7.10.3** Wash γH2AX-AF488 stained cells with 1 mL 1X BD Perm/Wash Buffer and then pellet the cells at  $500 \times g$  for 5 min. Carefully remove the buffer and resuspend the cell pellet in an additional 1 mL 1X BD Perm/Wash Buffer.

|         |  |           |   |                          |
|---------|--|-----------|---|--------------------------|
| Title:  | γH2AX Immunofluorescence Assay Antibody Qualification and Laboratory Proficiency Testing |           |   | Page 13 of 27            |
| Doc. #: | LHTP003.8.1.1  | Revision: | C | Effective Date: 4/6/2012 |

#### 7.10.4 Total Cell Count of γH2AX-AF488–Stained Cells

- 7.10.4.1 Prepare a 1:10 dilution of γH2AX-AF488–stained untreated and topotecan-treated cells by transferring 10 μL of cell suspension into a labeled microtube containing 90 μL 1X PBS (no trypan blue). Gently mix by pipetting.
- 7.10.4.2 Determine the total cells/mL for both untreated and topotecan-treated cells using a hemocytometer (see Appendix 4 for information on hemocytometer use). Record the cell counts and calculate the total cells remaining in the cell suspensions in the Batch Record (Appendix 1, Section 9A).

#### 7.10.5 Dilute γH2AX-AF488–Stained Cell Suspension to $8.0 \times 10^5$ cells/mL

**Note:** Selection of the set of calculations to use in Appendix 1, Section 9B for preparation of the  **$8.0 \times 10^5$  cells/mL** suspension is based on the ‘Total cells/mL’ determined in SOP Step 7.10.4. Complete the appropriate portion of the Batch Record (Appendix 1, Section 9B) for untreated and topotecan-treated cells based on the total cells/mL (either  $\leq$  or  $>$   $8.0 \times 10^5$  cells/mL).

- 7.10.5.1 For samples with a total cell count of  $\leq 8.0 \times 10^5$  cells/mL complete Appendix 1, Section 9Ba:
- Calculate the total volume of 1X BD Perm/Wash Buffer needed to resuspend the cell pellet (‘Total Cells in remaining 0.99 mL’) to a final concentration of  **$8.0 \times 10^5$  cells/mL**. A minimum of 0.4 mL of each  $8.0 \times 10^5$  cells/mL cell suspension will be needed for the SOP.
  - Pellet the cells in a swing-bucket rotor at 500 x g for 5 min and then resuspend the cell pellets in the calculated volume of 1X BD Perm/Wash Buffer.
- 7.10.5.2 For samples with a total cell count of  $> 8.0 \times 10^5$  cells/mL complete Appendix 1, Section 9Bb:
- Calculate the total volume of 1X BD Perm/Wash Buffer to add to the current cell suspension (0.99 mL) for a final concentration of  **$8.0 \times 10^5$  cells/mL**.
  - Add the calculated volume of 1X BD Perm/Wash Buffer to the cell suspension and, if necessary, use a larger tube to get even mixing of cells.
- 7.10.5.3 Record the date and time in the Batch Record that the cells are resuspended/diluted to  $8.0 \times 10^5$  cells/mL (Appendix 1, Section 9C).

#### 7.11 **Prepare Cytospin Slides**

**Note:** SOP Steps 7.11 - 7.13 are required for antibody qualification. If a qualified antibody is already being used, skip to SOP Step 7.14 for laboratory proficiency testing.

- 7.11.1 Clearly label one cytospin slide “untreated” and one cytospin slide “topotecan-treated.” Close cytology funnel slide support firmly and place into the rotor of the cytocentrifuge, being sure to balance the samples.
- 7.11.2 Use a 1000-μL pipette and load 0.3 mL of each  $8.0 \times 10^5$  cells/mL suspension onto the correct slide funnel. Be sure that each sample is deposited onto the cell deposition area on the bottom of the sample chamber and does not drip down the sides of the funnel. Save the remaining cell suspension for laboratory proficiency testing.

|         |  |           |   |                          |
|---------|--|-----------|---|--------------------------|
| Title:  | γH2AX Immunofluorescence Assay Antibody Qualification and Laboratory Proficiency Testing |           |   | Page 14 of 27            |
| Doc. #: | LHTP003.8.1.1  | Revision: | C | Effective Date: 4/6/2012 |

- 7.11.3** Set the cytocentrifuge to spin the cytology slides at no greater than 200 x *g* for 5 min (if using a Shandon Cytospin 4 system, 600 rpm is recommended). Record the speed of the cytocentrifuge and time the cytospin run begins and ends in the Batch Record (Appendix 1, Section 10A).
- 7.11.4** Once the cytocentrifuge has stopped, remove the cytology funnels one at a time. Detach the cytology funnels from each slide, being careful not to smear the slides.
- 7.11.5** Use a solvent-resistant laboratory marker trace a circle around the deposited cell spots; leave about a 3 mm space between the cells and the line.
- 7.11.6** Place the slides face up on a paper towel to air dry at RT for 2 min.
- 7.11.7** Using a 1000-μL pipette, place no more than two drops of Prolong Gold antifade reagent with DAPI onto the cytospin cell spot and cover with a cover slip. Record the date and time in the Batch Record (Appendix 1, Section 10B).
- 7.12 γH2AX-AF488–Positive Cytospin Cell Counts**
- 7.12.1** Examine each cytospin cell spot on a fluorescent microscope at 200X final magnification using the DAPI filter. Image capture and storage with a CCD camera is recommended if one is available.
- 7.12.2** Count and record the total number of DAPI-positive nuclei in the Batch Record (Appendix 1, Section 11). **Note:** More than one field of view may need to be counted.
- A minimum of 100 DAPI-positive nuclei should be scored for each sample.
  - Properly prepared slides should have intact cells with spherical nuclei and minimal evidence of cell lysis or apoptosis.
- 7.12.3** Switch to the FITC filter. Count and record the total number of scored DAPI-positive nuclei (previous step) that have γH2AX-AF488–positive staining in the Batch Record (Appendix 1, Section 11).
- Properly stained cells should have nuclear-specific γH2AX-AF488 staining with no cytoplasmic staining.
- 7.12.4** Calculate the percent γH2AX-AF488–positive nuclei for both the untreated and topotecan-treated samples and record in the Batch Record (Appendix 1, Section 11).
- 7.13 Antibody Qualification QC**
- 7.13.1** Based on the calculated percent γH2AX-AF488–positive nuclei (Appendix 1, Section 11) and the following QC criteria, indicate **Pass** or **Fail** for the untreated and topotecan-treated cells in the Batch Record (Appendix 1, Section 12A):
- Untreated cells should have < 3% γH2AX-AF488–positive nuclei. A value of zero is considered acceptable.
  - Topotecan-treated cells should have ≥ 10% γH2AX-AF488–positive nuclei.
- 7.13.2** If both of these QC criteria are met, the new batch of γH2AX-AF488 conjugate antibody is now considered a qualified reagent. Indicate **PASS** in the Batch Record (Appendix 1, Section 12B).
- IMPORTANT:** The qualified antibody has to pass laboratory proficiency testing before it can be used to analyze clinical samples. Proceed to SOP Step 7.14 to complete proficiency testing.

|         |  |           |   |                          |
|---------|--|-----------|---|--------------------------|
| Title:  | γH2AX Immunofluorescence Assay Antibody Qualification and Laboratory Proficiency Testing |           |   | Page 15 of 27            |
| Doc. #: | LHTP003.8.1.1  | Revision: | C | Effective Date: 4/6/2012 |

**7.13.3** If the either of the QC criteria are **not** met, indicate **FAIL** in the Batch Record (Appendix 1, Section 12B). Do not proceed further with the SOP.

7.13.3.1 If this is the first time antibody qualification has failed, rerun the SOP with a fresh preparation of MCF7/HT-29 cells and a new Batch Record.

7.13.3.2 If antibody qualification fails a second time, this lot of antibody should be labeled as failed QC, and a new lot of antibody should be ordered.

#### 7.14 Spike Untreated and Topotecan-Treated Cells Into Healthy Donor Blood

**Important:** A qualified lot of γH2AX-AF488 conjugate antibody is required for laboratory proficiency testing. Newly qualified γH2AX-AF488 conjugate antibodies must also pass laboratory proficiency testing.

**7.14.1** For each set of 2 CellSave tubes from each healthy donor (3 donors, 6 tubes total), label one tube “untreated” and the other “topotecan-treated” to identify which cell sample will be spiked into the tube. Blood samples should be at RT (15°C to 25°C); **do not** place on ice or refrigerate.

**7.14.2** With the remaining (unstained) 1 mL of  $1.0 \times 10^6$  viable cells/mL untreated and topotecan-treated cell suspensions from SOP Step 7.9.5.1, prepare a  **$1.0 \times 10^4$  cells/mL** suspension of both untreated and topotecan-treated cells in 1X BD Perm/Wash Buffer. Use the calculations in the Batch Record (Appendix 1, Section 13A), and record the date and time of preparation.

**7.14.3** Spike 50 μL of the  **$1.0 \times 10^4$  cells/mL** untreated or topotecan-treated cells ( $500 \pm 50$  cells) into the pre-labeled tubes of healthy donor blood. Record the time cells are spiked into the blood samples in the Batch Record (Appendix 2, Section 13B). In addition, verify **each** donor has 1 untreated and 1 topotecan-treated spiked blood sample (Appendix 1, Section 13B).

#### 7.15 Spiked Sample CTC Enumeration

**Note:** Untreated and topotecan-treated cells serve as mock-CTCs during enumeration.

**7.15.1** Follow **LHTP003.8.1** (Immunofluorescence Assay for Circulating Tumor Cells Using the CellSearch System) beginning at SOP Step 7.5.

**7.15.2** Attach the LHTP003.8.1 Batch Record and copies of the CellTracks Analyzer II Research Reports for each sample to the Batch Record (Appendix 1, Section 14).

#### 7.16 Proficiency Testing QC

**7.16.1** Using the CellTracks Analyzer II Research Reports from the cell line-spiked blood samples, complete Appendix 1, Section 15A in the Batch Record by recording the total number of cells and γH2AX-AF488–positive cells enriched from each spiked blood sample.

**7.16.2** For each blood sample, calculate the percent γH2AX-positive cells and enter this in the Batch Record (Appendix 1, Section 15A).

PADIS Standard Operating Procedure (SOP)

|         |  |           |   |                          |
|---------|--|-----------|---|--------------------------|
| Title:  | γH2AX Immunofluorescence Assay Antibody Qualification and Laboratory Proficiency Testing |           |   | Page 16 of 27            |
| Doc. #: | LHTP003.8.1.1  | Revision: | C | Effective Date: 4/6/2012 |

**7.16.3** Using the following the QC criteria indicate **Pass** or **Fail** for each untreated and topotecan-treated cell-line–spiked blood sample in the Batch Record (Appendix 1, Section 15A).

- Blood samples spiked with untreated cells should have < 3% isolated γH2AX-AF488–positive cells (a value of zero is acceptable).
- Blood samples spiked with topotecan-treated cells should have ≥ 10% isolated γH2AX-AF488–positive cells.

**7.16.4** If both of these QC criteria are met for all 3 healthy donors, indicate **PASS** for overall laboratory proficiency testing in the Batch Record (Appendix 1, Section 15B), and the laboratory and/or new operator can analyze clinical samples following SOP LHTP003.8.1 using a qualified antibody.

**7.16.5** If the above QC criteria are **not** met for any of the healthy donor samples, indicate **FAIL** for overall laboratory proficiency testing in the Batch Record (Appendix 1, Section 15B).

7.16.5.1 If this is the first time proficiency testing has failed, rerun the SOP a second time with a fresh preparation of cells and a new Batch Record.

7.16.5.2 If the proficiency testing fails a second time, a new batch of antibody will need to be ordered or if this is a new operator, additional training may be needed.

**7.17** Review and finalize the Batch Record (Appendix 1) and obtain required signatures. Document ANY and ALL deviations from this SOP in the Batch Record (Appendix 1, Section 16).

**7.18** A second certified Veridex user should review the Batch Record and sample reports and sign the Batch Record affirming that all antibody qualification and/or laboratory proficiency testing criteria are met (Appendix 1, Section 17).

**7.19** The Laboratory Director/Supervisor should review the Batch Record and sample reports and sign the Batch Record affirming the data contained within the reports are correct (Appendix 1, Section 18).



|         |  |           |   |                          |
|---------|--|-----------|---|--------------------------|
| Title:  | γH2AX Immunofluorescence Assay Antibody Qualification and Laboratory Proficiency Testing |           |   | Page 17 of 27            |
| Doc. #: | LHTP003.8.1.1  | Revision: | C | Effective Date: 4/6/2012 |

**APPENDIX 1: BATCH RECORD**

**NOTE:** Record times using **military time** (24-h designation); e.g., specify 16:15 to indicate 4:15 PM.

Certified Assay Operator: \_\_\_\_\_

Veridex certification number: \_\_\_\_\_

DCTD certification number: \_\_\_\_\_

Date: \_\_\_\_ / \_\_\_\_ / \_\_\_\_

Facility/Laboratory Running SOP: \_\_\_\_\_

**1. Reason(s) for Running SOP (SOP Step 7.2)**

A. Qualifying a New Batch of γH2AX-AF488 Conjugate

YES       NO

B. Reason(s) for Laboratory Proficiency Testing

Initial Laboratory Set-up

New Batch of γH2AX-AF488 Conjugate (replied YES above)

New Certified Assay Operator (should be same operator as listed above)

Other: \_\_\_\_\_

**2. Antibody Information (SOP Step 7.3)**

Date γH2AX-AF488 conjugate received: \_\_\_\_\_

Lot # γH2AX antibody in conjugate: \_\_\_\_\_

If already qualified, date of antibody qualification: \_\_\_\_\_

**3. Equipment (SOP Step 7.5)**

Microcentrifuge      Make/Model: \_\_\_\_\_

Serial #: \_\_\_\_\_

Swing Bucket Rotor      Make/Model: \_\_\_\_\_

Serial #: \_\_\_\_\_

Cytocentrifuge (Cytospin Slide Prep)

Manufacturer/Model: \_\_\_\_\_

Serial #: \_\_\_\_\_

Slides/Funnels      Manufacturer/Model: \_\_\_\_\_

Lot #: \_\_\_\_\_

BATCH RECORD:      INITIALS \_\_\_\_\_

DATE: \_\_\_\_\_

PADIS Standard Operating Procedure (SOP)

|         |  |           |   |                          |
|---------|--|-----------|---|--------------------------|
| Title:  | γH2AX Immunofluorescence Assay Antibody Qualification and Laboratory Proficiency Testing |           |   | Page 18 of 27            |
| Doc. #: | LHTP003.8.1.1  | Revision: | C | Effective Date: 4/6/2012 |

**4. Healthy Donor Blood Collection (SOP Step 7.6.5)**

|         | Collection Date<br>MM/DD/YY | Collection Time | Verify 2 Tubes of Blood Collected |
|---------|-----------------------------|-----------------|-----------------------------------|
| Donor 1 | / /                         | :               | <input type="checkbox"/> Yes      |
| Donor 2 | / /                         | :               | <input type="checkbox"/> Yes      |
| Donor 3 | / /                         | :               | <input type="checkbox"/> Yes      |

**5. Cell Line Preparation (SOP Step 7.7)**

A. Cell Line Information

Cell Line:            MCF7            HT-29

Cell Passage Number: \_\_\_\_\_

Verify 2 flasks of cells are ~80% confluent:    Yes

Date:                    \_\_\_\_\_ / \_\_\_\_\_ / \_\_\_\_\_

B. Topotecan Treatment

|                                | Untreated Cells | Topotecan-Treated Cells |
|--------------------------------|-----------------|-------------------------|
| Time 1 μM topotecan added:     | N/A             | :                       |
| Time 1 <sup>st</sup> PBS wash: | :               | :                       |

C. Cell Harvest

Time trypsin added:                   \_\_\_\_\_ :

Time culture medium added:                   \_\_\_\_\_ :

BATCH RECORD:   INITIALS \_\_\_\_\_

DATE: \_\_\_\_\_

PADIS Standard Operating Procedure (SOP)

|         |  |           |   |                 |               |
|---------|--|-----------|---|-----------------|---------------|
| Title:  | γH2AX Immunofluorescence Assay Antibody Qualification and Laboratory Proficiency Testing |           |   |                 | Page 19 of 27 |
| Doc. #: | LHTP003.8.1.1  | Revision: | C | Effective Date: | 4/6/2012      |

**6. Total and Viable Cell Count (SOP Step 7.8)**

A. Total and Viable Cell Count

| (with trypan blue)                             | Untreated Cells |   |   |   | Topotecan-Treated Cells |   |   |   |
|--|-----------------|---|---|---|-------------------------|---|---|---|
| Hemocytometer area (Appendix 4):               | A               | B | C | D | A                       | B | C | D |
| Total cells per hemocytometer square counted:  |                 |   |   |   |                         |   |   |   |
| Viable cells per hemocytometer square counted: |                 |   |   |   |                         |   |   |   |
| Hemocytometer dilution factor:                 | 1: ____         |   |   |   | 1: ____                 |   |   |   |

$$CELLS/ML = \left( \frac{Cells\ in\ A+B+C+D}{4} \right) * 10,000 * dilution\ factor$$

|  |   |   |
|--|---|---|
| Calculated <b>Total</b> CELLS/ML:  | CELLS/ML  | CELLS/ML  |
| <b>Total Cells</b> in remaining 4.98 mL:<br>(CELLS/ML * 4.98 mL)               | <b>Total Cells</b>  | <b>Total Cells</b>  |
| Calculated <b>Viable</b> CELLS/ML:   | CELLS/ML  | CELLS/ML  |
| <b>Total Viable Cells</b> in remaining 4.98 mL:<br>(viable CELLS/ML * 4.98 mL) | <b>Total Viable Cells</b>                                   | <b>Total Viable Cells</b>                                   |
| Percent viability:<br>([ <b>Total Viable Cells</b> / <b>Total Cells</b> ]*100) | %   | %   |
| Percent viability must be ≥ 90% to Pass QC:                                    | <input type="checkbox"/> Pass <input type="checkbox"/> Fail | <input type="checkbox"/> Pass <input type="checkbox"/> Fail |

B. Aliquot 3.0 x 10<sup>6</sup> Viable Cells

|  | Untreated Cells  | Topotecan-Treated Cells  |
|--|--|--|
| Divide ' <b>Total Viable Cells</b> in remaining 4.98 mL' by 3.0 x 10 <sup>6</sup> cells/mL | <u>                    </u><br>cells<br>3.0 x 10 <sup>6</sup> cells/mL | <u>                    </u><br>cells<br>3.0 x 10 <sup>6</sup> cells/mL |
| Equals Vol. Cell Suspension to Use for Permeabilization and Fixation                       | mL   | mL   |

**7. Cell Permeabilization and Fixation (SOP Step 7.9.1)**

BD Cytofix/Cytoperm incubation:            Start Time: \_\_\_\_\_ : \_\_\_\_\_  
    End Time:        \_\_\_\_\_ : \_\_\_\_\_

BATCH RECORD:     INITIALS \_\_\_\_\_            DATE: \_\_\_\_\_

PADIS Standard Operating Procedure (SOP)

|         |  |           |   |                          |
|---------|--|-----------|---|--------------------------|
| Title:  | γH2AX Immunofluorescence Assay Antibody Qualification and Laboratory Proficiency Testing |           |   | Page 20 of 27            |
| Doc. #: | LHTP003.8.1.1  | Revision: | C | Effective Date: 4/6/2012 |

8. γH2AX-AF488 Conjugate Cell Staining (SOP Step 7.9.2 and 7.10.2)

Place the 1 mg/mL γH2AX-AF488 conjugate **STOCK** (1000 μg/mL) on ice. For two cell preparations (untreated and topotecan-treated), prepare 1.1 mL (0.55 mL/tube \* 2; preparing 10% extra) γH2AX-AF488 Working Solution using the following calculations:

A. γH2AX-AF488 Working Solution (5 μg/mL)

1.1 mL 1X BD Perm/Wash Buffer  
 5.5 μL γH2AX-AF488 conjugate **STOCK**

γH2AX-AF488 incubation: Start Time: \_\_\_\_\_ : \_\_\_\_\_  
 End Time: \_\_\_\_\_ : \_\_\_\_\_

B. Initial test concentration of γH2AX-AF488 Working Solution is 5 μg/mL; use the following calculations if another concentration needs to be tested.

|   |          |   |            |   |  |
|---|----------|---|------------|---|--|
| Working Conc. of<br>γH2AX-AF488 conjugate | * 1.1 mL | * | 1000 μL/mL | = | <u>XX</u> μL γH2AX-AF488<br><b>STOCK</b> |
| <u>γH2AX-AF488 conjugate <b>STOCK</b></u> |          |   |            |   |  |

|  |          |   |            |   |  |
|--|----------|---|------------|---|--|
| <u>    </u> μg/mL                                    | * 1.1 mL | * | 1000 μL/mL | = | <u>    </u> μL γH2AX-AF488<br><b>STOCK</b> |
| <u>1000 μg/mL γH2AX-AF488 conjugate <b>STOCK</b></u> |          |   |            |   |  |

9. γH2AX-AF488–Stained Cells

A. Total Cell Count of γH2AX-AF488–Stained Cells (SOP Step 7.10.4)

| (no trypan blue)  | <b>Untreated Cells</b> |   |   |   | <b>Topotecan-Treated Cells</b> |   |   |   |
|---|------------------------|---|---|---|--------------------------------|---|---|---|
| Hemocytometer area:   | A                      | B | C | D | A                              | B | C | D |
| Total cells per hemocytometer square counted:                                 |                        |   |   |   |                                |   |   |   |
| Hemocytometer dilution factor:  | 1: _____               |   |   |   | 1: _____                       |   |   |   |
| CELLS/ML = ( $\frac{\text{Cells in A+B+C+D}}{4}$ * 10,000 ) * dilution factor |                        |   |   |   |                                |   |   |   |
| Calculated total CELLS/ML:  | CELLS/ML               |   |   |   | CELLS/ML                       |   |   |   |
| <i>Total Cells</i> in remaining 0.99 mL:<br>(CELLS/ML * 0.99 mL)              | <i>Total Cells</i>     |   |   |   | <i>Total Cells</i>             |   |   |   |

BATCH RECORD: INITIALS \_\_\_\_\_

DATE: \_\_\_\_\_

PADIS Standard Operating Procedure (SOP)

|         |  |           |   |                          |
|---------|--|-----------|---|--------------------------|
| Title:  | γH2AX Immunofluorescence Assay Antibody Qualification and Laboratory Proficiency Testing |           |   | Page 21 of 27            |
| Doc. #: | LHTP003.8.1.1  | Revision: | C | Effective Date: 4/6/2012 |

B. Resuspend γH2AX-AF488–Stained Cells at 8.0 x 10<sup>5</sup> cells/mL (SOP Step 7.10.5)

**Note:** Complete only the portions that apply. For example, for the untreated and topotecan-treated cells, one sample may be calculated using the ≤ 8.0 x 10<sup>5</sup> cells/mL section (a) and the other using the > 8.0 x 10<sup>5</sup> cells/mL section (b).

|   | Untreated Cells   | Topotecan-Treated Cells                                       |
|---|---|---|
| <b>a. ≤ 8.0 x 10<sup>5</sup> CELLS/ML</b>                                   |   |   |
| Divide 'Total Cells in remaining 0.99 mL' by 8.0 x 10 <sup>5</sup> cells/mL | $\frac{\text{Total Cells}}{8.0 \times 10^5 \text{ cells/mL}}$ | $\frac{\text{Total Cells}}{8.0 \times 10^5 \text{ cells/mL}}$ |
| Equals Vol. 1X BD Perm/Wash Buffer Used to Resuspend Pellet                 | mL  | mL  |
| <b>b. &gt; 8.0 x 10<sup>5</sup> CELLS/ML</b>                                |   |   |
| Divide 'Total Cells in remaining 0.99 mL' by 8.0 x 10 <sup>5</sup> cells/mL | $\frac{\text{Total Cells}}{8.0 \times 10^5 \text{ cells/mL}}$ | $\frac{\text{Total Cells}}{8.0 \times 10^5 \text{ cells/mL}}$ |
| Equals Final Vol. Needed  | mL  | mL  |
| Minus Starting Vol.   | - 0.99 mL   | - 0.99 mL   |
| Equals Vol. 1X BD Perm/Wash Buffer to Add to Suspension                     | mL  | mL  |

C. Date and Time γH2AX-AF488–Stained Cells Resuspended/Diluted to 8.0 x 10<sup>5</sup> cells/mL

Date     /     /     Time     :     \_\_\_\_\_

**10. Cytospin Slide Preparation (SOP Step 7.11)**

**Note:** If a qualified antibody is already being used, skip to Appendix 1, Section 13.

A. Cytocentrifuge

Speed (200 x g max.): \_\_\_\_\_

Spin Start Time     :     \_\_\_\_\_ Spin End Time     :     \_\_\_\_\_

B. ProLong Gold Antifade Reagent with DAPI and Cover Slips Added

Date     /     /     Time     :     \_\_\_\_\_

BATCH RECORD:     INITIALS \_\_\_\_\_

DATE: \_\_\_\_\_

|         |  |           |   |                          |
|---------|--|-----------|---|--------------------------|
| Title:  | γH2AX Immunofluorescence Assay Antibody Qualification and Laboratory Proficiency Testing |           |   | Page 22 of 27            |
| Doc. #: | LHTP003.8.1.1  | Revision: | C | Effective Date: 4/6/2012 |

**11. Percent γH2AX-AF488-Positive Nuclei (SOP Step 7.12)**

|  | Untreated Cells | Topotecan-Treated Cells |
|--|-----------------|-------------------------|
| Total DAPI-positive nuclei scored (minimum 100 nuclei)                 |                 |                         |
| Total DAPI-positive-scored cells that have γH2AX-AF488-positive nuclei |                 |                         |
| % γH2AX-AF488-positive nuclei ([DAPI-positive/γH2AX-positive]*100)     | %               | %                       |

**12. Antibody Qualification Criteria (SOP Step 7.13)**

A. Antibody QC Criteria

|  | Untreated Cells  | Topotecan-Treated Cells  |
|--|--|--|
| % γH2AX-AF488-positive nuclei to pass QC | <b>&lt; 3%</b>   | <b>≥ 10%</b>   |
| Pass/Fail                                | <input type="checkbox"/> Pass<br><input type="checkbox"/> Fail | <input type="checkbox"/> Pass<br><input type="checkbox"/> Fail |

B. Overall Antibody Qualification

Both untreated and topotecan-treated cell line samples need to pass QC using the new batch of γH2AX-AF488 conjugate.

Check One:            **PASS**                            **FAIL**

**13. Spiked Healthy Blood Samples (SOP Step 7.14)**

A. Prepare 1.0 x 10<sup>4</sup> cells/mL untreated and topotecan-treated samples as follows:

10 μL           1.0 x 10<sup>6</sup> cells/mL untreated or topotecan-treated cells  
 990 μL       1X BD Perm/Wash Buffer.

Date    \_\_\_ / \_\_\_ / \_\_\_    Time    \_\_\_\_\_ :

B. Spike Blood Samples

Time    \_\_\_\_\_ :

| Verify cells are spiked into each sample | Untreated Cells              | Topotecan-Treated Cells      |
|--|------------------------------|------------------------------|
| Donor 1                                  | <input type="checkbox"/> Yes | <input type="checkbox"/> Yes |
| Donor 2                                  | <input type="checkbox"/> Yes | <input type="checkbox"/> Yes |
| Donor 3                                  | <input type="checkbox"/> Yes | <input type="checkbox"/> Yes |

PADIS Standard Operating Procedure (SOP)

|         |  |           |   |                          |
|---------|--|-----------|---|--------------------------|
| Title:  | γH2AX Immunofluorescence Assay Antibody Qualification and Laboratory Proficiency Testing |           |   | Page 23 of 27            |
| Doc. #: | LHTP003.8.1.1  | Revision: | C | Effective Date: 4/6/2012 |

**14. Attach the following documents (SOP Step 7.15)**

- LHTP003.8.1 Batch Record for Healthy Donor Spiked Samples
- CellTracks Analyzer II Research Reports for Each Sample From Each Healthy Donor

**15. Laboratory Proficiency Testing Criteria (SOP Step 7.16)**

A. Individual Spiked Sample QC Criteria

| Spike Sample |                          | Total Cells (mock-CTCs) | Total γH2AX-AF488-Positive Cells | % γH2AX-AF488-Positive Cells | Pass/Fail*   |
|--------------|--------------------------|-------------------------|----------------------------------|------------------------------|--|
| Donor 1      | Untreated cells:         |                         |                                  | %                            | <input type="checkbox"/> Pass<br><input type="checkbox"/> Fail |
|              | Topotecan-treated cells: |                         |                                  | %                            | <input type="checkbox"/> Pass<br><input type="checkbox"/> Fail |
| Donor 2      | Untreated cells:         |                         |                                  | %                            | <input type="checkbox"/> Pass<br><input type="checkbox"/> Fail |
|              | Topotecan-treated cells: |                         |                                  | %                            | <input type="checkbox"/> Pass<br><input type="checkbox"/> Fail |
| Donor 3      | Untreated cells:         |                         |                                  | %                            | <input type="checkbox"/> Pass<br><input type="checkbox"/> Fail |
|              | Topotecan-treated cells: |                         |                                  | %                            | <input type="checkbox"/> Pass<br><input type="checkbox"/> Fail |

\* **Pass criteria:** Untreated cells: < 3% γH2AX-AF488-positive nuclei  
 Topotecan-treated cells: ≥ 10% γH2AX-AF488-positive nuclei

B. Overall Laboratory Proficiency Testing

All spiked donor samples need to pass QC in order for laboratory to pass the proficiency testing:

Check One:  **PASS**  **FAIL**

BATCH RECORD: INITIALS \_\_\_\_\_

DATE: \_\_\_\_\_

PADIS Standard Operating Procedure (SOP)

|         |  |           |   |                          |
|---------|--|-----------|---|--------------------------|
| Title:  | γH2AX Immunofluorescence Assay Antibody Qualification and Laboratory Proficiency Testing |           |   | Page 24 of 27            |
| Doc. #: | LHTP003.8.1.1  | Revision: | C | Effective Date: 4/6/2012 |

**16. Notes, including any deviations from the SOP:**

**17. Second Certified Operator Review of Clinical Samples**

Certified Assay Operator: \_\_\_\_\_ (PRINT)

\_\_\_\_\_ (SIGN)

Veridex certification number: \_\_\_\_\_

Date: \_\_\_\_ / \_\_\_\_ / \_\_\_\_

**18. Laboratory Director/Supervisor Review of Batch Record**

Laboratory Director/Supervisor: \_\_\_\_\_ (PRINT)

\_\_\_\_\_ (SIGN)

Date: \_\_\_\_ / \_\_\_\_ / \_\_\_\_

BATCH RECORD: INITIALS \_\_\_\_\_ DATE: \_\_\_\_\_



|         |  |           |   |                          |
|---------|--|-----------|---|--------------------------|
| Title:  | γH2AX Immunofluorescence Assay Antibody Qualification and Laboratory Proficiency Testing |           |   | Page 25 of 27            |
| Doc. #: | LHTP003.8.1.1  | Revision: | C | Effective Date: 4/6/2012 |

## APPENDIX 2: COMPANY-SUPPLIED WESTERN BLOT

- Text accompanying the γH2AX Western blot provided within the Certificate of Analysis (COA) specifically states that the blot is a “representative blot from a previous lot” of antibody (see below). According to Millipore, the text is part of a standard COA template document. If a blot from the exact lot of antibody used is specifically requested, Millipore replaces the “representative blot” with the blot from the exact lot; however, the text in the template document is not changed.
- Millipore should send an e-mail verifying that the blot in the COA is from the exact lot of γH2AX antibody used to create the conjugate, and listed on the COA (as requested with order). Be sure you receive and save this e-mail along with the COA.



10 Old Barn Road • Lake Placid, NY 12946  
 Technical Support: T: 800 548-7853 • F: 518 523-4513  
 email: techserv@upstate.com  
 Sales Department: T: 800 233-3991 • F: 781 890-7738  
 Licensing Dept.: 800 310-4659  
 www.upstate.com

**Anti-phospho-Histone H2A.X (Ser139), clone JBW301**  
 (mouse monoclonal IgG<sub>1</sub>)  
 Catalog # 05-636  
 Lot # 23760

**Immunogen:** KLH-conjugated, synthetic peptide (C-KATQA[*p*S]QEY) corresponding to amino acids 134-142 of human histone H2A.X. The immunizing sequence has 8 identical amino acids in yeast and mouse. Clone JBW301.

**Specificity:** Recognizes Histone H2A.X phosphorylated at Ser139, Mr 14kDa.

**Species Cross-reactivity:** Human. A broad species cross-reactivity is expected based on conservation of sequence homology.

**Storage and Stability:** Stable for 2 years at -20°C from date of shipment. For maximum recovery of product, centrifuge the vial prior to removing the cap.

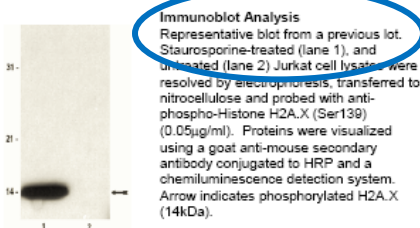
**Formulation:** 200µg of protein G purified mouse IgG<sub>1</sub> in 200µl of 0.1M Tris-glycine, pH 7.4, 0.15M NaCl, 0.05% sodium azide before the addition of glycerol to 30%. Liquid at -20°C.

FOR RESEARCH USE ONLY  
 NOT FOR USE IN HUMANS

### Quality Control Testing

**Immunoblot Analysis:** 0.05-1µg/ml of this lot detected phosphorylated histone H2A.X (Ser139) in acid extracted histone lysates from Jurkat cells treated with 0.5µM staurosporine (Catalog # 19-123).

**Immunocytochemistry:** 2µg/ml of this antibody detected phosphorylated histone H2A.X in Jurkat cells treated with 0.5µM staurosporine for 4-6 hours.



|         |  |           |   |                          |
|---------|--|-----------|---|--------------------------|
| Title:  | $\gamma$ H2AX Immunofluorescence Assay Antibody Qualification and Laboratory Proficiency Testing |           |   | Page 26 of 27            |
| Doc. #: | LHTP003.8.1.1  | Revision: | C | Effective Date: 4/6/2012 |

### APPENDIX 3: SAMPLE LABORATORY PROFICIENCY TESTING LOG

Each laboratory should maintain a proficiency testing log outlining the date each proficiency test was run, name of Certified Assay Operator, reason for the test, and whether it passed or failed. Batch Records for the proficiency tests recorded in the log should be stored in a secure location.

| Laboratory Proficiency Testing Log |                          |  |           |
|------------------------------------|--------------------------|--|-----------|
| Date*                              | Certified Assay Operator | Reason for Proficiency Test <sup>†</sup> | Pass/Fail |
| 01/01/2012                         | Jane A. Doe              | (1) Initial laboratory set-up            | Pass      |
|                                    |                          |  |           |
|                                    |                          |  |           |
|                                    |                          |  |           |
|                                    |                          |  |           |
|                                    |                          |  |           |
|                                    |                          |  |           |
|                                    |                          |  |           |
|                                    |                          |  |           |
|                                    |                          |  |           |
|                                    |                          |  |           |
|                                    |                          |  |           |
|                                    |                          |  |           |
|                                    |                          |  |           |
|                                    |                          |  |           |
|                                    |                          |  |           |
|                                    |                          |  |           |
|                                    |                          |  |           |
|                                    |                          |  |           |
|                                    |                          |  |           |

\* Date entered in the log should correspond to a specific Batch Record (Appendix 1).  
<sup>†</sup> Reasons for proficiency testing: (1) initial laboratory set-up, (2) new batch of qualified  $\gamma$ H2AX-AF488 antibody, (3) new Certified Assay Operator in the laboratory, (4) other – include explanation.

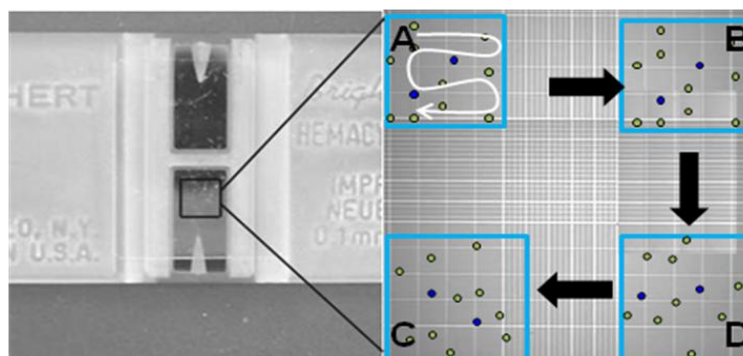


Frederick



|         |  |           |   |                          |
|---------|--|-----------|---|--------------------------|
| Title:  | γH2AX Immunofluorescence Assay Antibody Qualification and Laboratory Proficiency Testing |           |   | Page 27 of 27            |
| Doc. #: | LHTP003.8.1.1  | Revision: | C | Effective Date: 4/6/2012 |

## APPENDIX 4: HEMOCYTOMETER CELL COUNT



1. Prepare hemocytometer chamber and cover glass for use by cleaning with 70% ethanol and wiping dry with Kimwipes.
2. Prepare a known dilution of the cell sample to be counted. If doing a viability count, prepare a 1:5 dilution of the cell sample as follows: 20 μL sample + 60 μL 1X PBS + 20 μL 0.4% trypan blue).
3. Place cover glass squarely on top of hemocytometer and transfer 10 to 20 μL of the cell dilution under the cover glass on one side of hemocytometer and allow cells to settle.
4. Using the 20X objective, locate the upper left square of one grid (A).
5. When counting cells follow these general guidelines:
  - A. The middle of the triple lines separating each corner square (A-D) is the boundary line. Cells that touch the upper or left boundaries are included, but cells that touch the lower or right boundaries are excluded.
  - B. Optimal cell counts should be 30-150 cells/corner area, do additional 1:5 dilutions for high density samples
  - C. If greater than 10% of particles are clusters of cells, try to disperse cells in original cell suspension and repeat the count.
6. For total cells/mL:
  - A. Count all cells in each corner area (A - D) of the hemocytometer using a snake-like motion as indicated in corner A. Record all 4 counts (A, B, C, and D) in the Batch Record.
7. For viability counts:
  - A. Count total cells (white and blue cells) in the same manner. Record all 4 counts (A, B, C, and D) in the Batch Record.
  - B. Count viable cells (white cells only) in the same manner. Record all 4 counts (A, B, C, and D) in the Batch Record.
8. Total cells and total viable cells/mL can be determined using the following equation:

$$\text{cells/mL} = \left( \frac{\text{Total Cells in A+B+C+D}}{4} * 10,000 \right) * \text{dilution factor}$$