

Marine Managed Areas: All Published

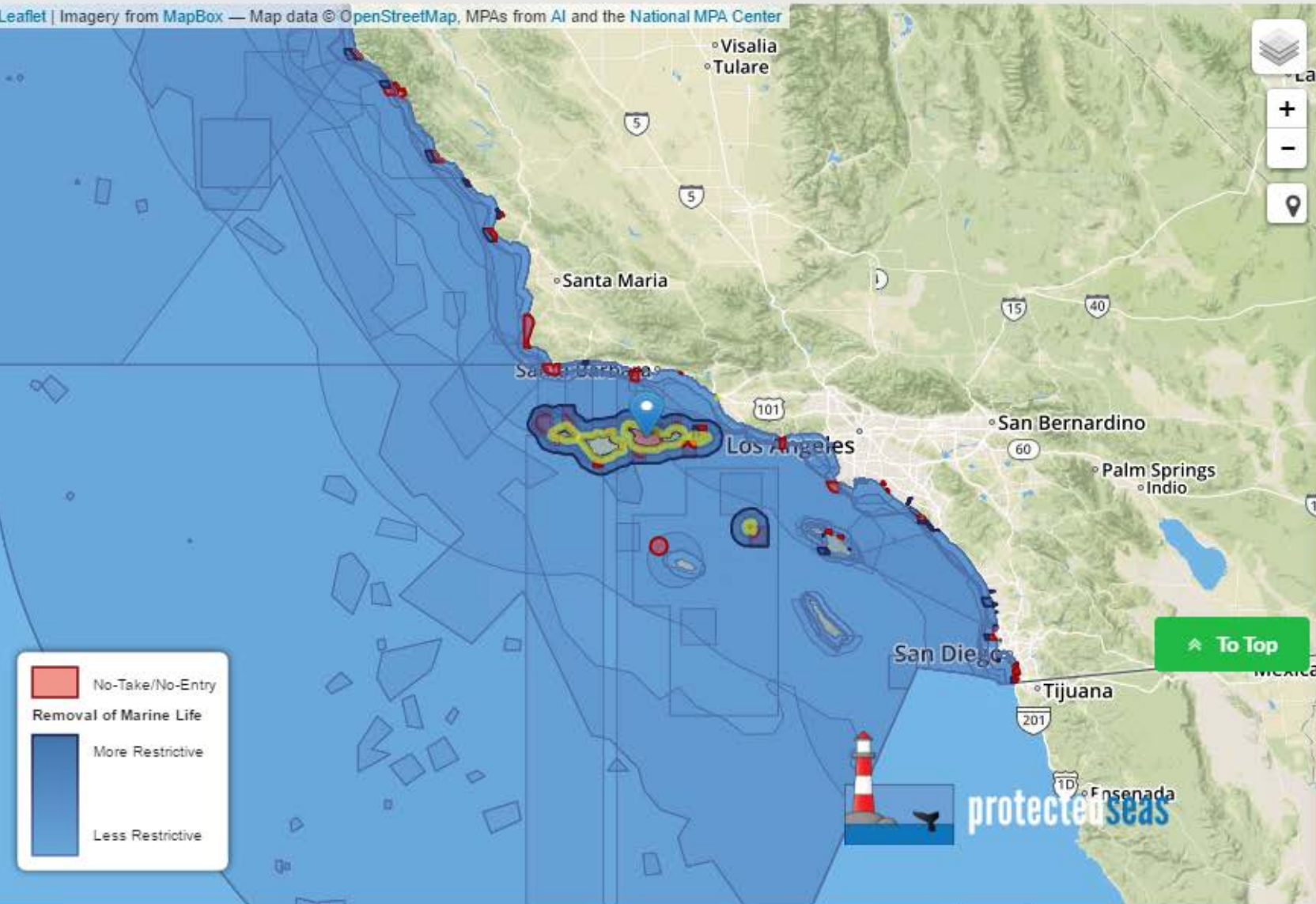
About

Link

Search...

Search

Leaflet | Imagery from MapBox — Map data © OpenStreetMap, MPAs from AI and the National MPA Center



Area Name

Management Authority

Restrictions

MARINE RESTRICTED AREAS ✕

Santa Cruz Island Reserve ▶

Channel Islands National Park ▼

MPA ID: NPS12

Site Name: Channel Islands National Park

Feedback

Managed By: National Park Service

Purpose: To preserve and protect Channel Islands National Park, a site which encompasses five islands as well as their surrounding ocean environments, preserving and protecting a wealth of natural and cultural resources. Isolation over thousands of years has created unique animals, plants, and archeological resources in these islands, helping preserve a place where visitors can experience coastal southern California as it once was.

- Restricted:**
1. No invertebrates may be taken in water less than five feet in depth.
 2. The taking of abalone and lobsters for commercial purposes is restricted near Anacapa Island and Santa Barbara Island.
 3. The use of all nets is prohibited within the outer edge of the kelp line surrounding Anacapa and Santa Barbara Islands.
 4. The use of trammel or gill nets is prohibited in less than 20 fathoms of water in all areas surrounding Anacapa and Santa Barbara Islands.

https://mpa.protectedseas.net

Marine Managed Areas: **All Published** ▾

[About](#)

[Link](#)

[Search](#)

Leaflet | Imagery from MapBox — Map data © OpenStreetMap, MPAs from AI and the National MPA Center

