

FREQUENT QUESTIONS



Digital Coast Sea Level Rise Viewer

January 2017

NOAA Office for Coastal Management
(843) 740-1200
coast.noaa.gov

Contents

Geographic Coverage	3
What are the current status and plans for future updates of the viewer?	3
Data	3
Where do the data come from?.....	3
What is the accuracy of the mapping used in this tool?	6
What is VDATUM?	6
How often is the mapping updated with new elevation data?	7
How do I access the data layers in the viewer?.....	7
Can I get the digital elevation models (DEMs) that were used to create the layers in the viewer, and how are they different from most other DEMs?	7
Modeling Approach	7
How is this tool different from other national sea level rise mapping efforts?.....	7
Why does the tool show inundation starting at mean higher high water (MHHW)?.....	8
Is this viewer based on a “bathtub” modeling approach?	8
Does this viewer show timing of inundation levels (e.g., 3 feet by 2100)?	8
Do the maps shown in this viewer take into account levees and/or hydraulic features (culverts, pipes, levees, bridges)?.....	9
Do the maps take into account future changes in geomorphology, shoreline change, etc?	10
How is the marsh migration mapping different from maps generated from the Sea Level Affecting Marshes Model?.....	10
How is accretion handled in the marsh impact modeling tab of this tool?.....	10
Using the Tool	11

What am I looking at in each tab or section of the tool?.....11
How do I get my regional or local GIS data to overlay with the layers in this viewer?14
Can I get the viewer source code?14
User Feedback14
How do I provide feedback on this tool?.....14

Geographic Coverage

What are the current status and plans for future updates of the viewer?

All coastal states and territories are included in the viewer except for Alaska. Currently there are no plans to map Alaska because of a lack of adequate statewide coastal elevation data. All Great Lakes states are included in a separate viewer, called the Lake Level Viewer (coast.noaa.gov/llv). These areas have been mapped for both inundation and lake level drop.

New elevation data are continuously being collected by various federal, state, and local entities, so it is possible that newer data have been collected since the mapping areas were originally populated. Since all coastal areas (except for Alaska) have been mapped, we do plan to update the viewer when warranted. Updates are determined based on several factors, including the quality and extent of new elevation data, as well as Office for Coastal Management and partner priorities.

Data

Where do the data come from?

There are many data layers displayed in the viewer. Each functional tab displays different data.

Sea Level Rise

The maps in this tab show inland extent and relative depth of inundation from 0 to 6 feet above mean higher high water (MHHW). Areas that are hydrologically connected (according to the digital elevation model used) are shown in shades of blue. Low-lying areas, displayed in green, are considered hydrologically “unconnected” areas that may flood. They are determined solely by how well the elevation data capture the area’s hydroconnectivity. A more detailed analysis of these areas is required to determine whether they flood given the chosen sea level rise (SLR) value. The inundation maps are created by subtracting the NOAA VDATUM MHHW surface from the digital elevation model.

The data in the maps do not consider natural processes such as erosion, subsidence, or future construction. Inundation is shown as it would appear during MHHW—the average of the higher high water height of each tidal day observed over the National Tidal Datum Epoch {~19 years} (excludes wind driven tides). The data, maps, and information provided should be used only as a screening-level tool.

Visualization Locations

Clickable camera icons display inundation impacts at 0-6 feet above MHHW at various public locations. The water surface was superimposed on existing photographs based on site elevations taken from digital elevation models using a free software program called CanVIS, available for free download on Digital Coast: coast.noaa.gov/digitalcoast/tools/canvis.

“Areas not mapped”

These hash-marked areas indicate places where adequate accuracy elevation data (see question on data accuracy) were not available for mapping.

Mapping Confidence

Levels of confidence are depicted on this tab. Blue areas denote a high confidence of inundation, orange areas denote a low confidence of inundation, and unshaded areas denote a high confidence that these areas will be dry given the chosen water level. In this application, 80% is considered a high degree of confidence such that, for example, the blue areas denote locations that may be correctly mapped as “inundated” more than 8 out of 10 times. Areas with a low degree of confidence represent locations that may be mapped correctly (either as inundated or dry) less than 8 out of 10 times.

Confidence mapping is a fairly complicated procedure that is explained in detail in “Mapping and Portraying Inundation Uncertainty of Bathtub-Type Models” available at www.jcronline.org/doi/abs/10.2112/JCOASTRES-D-13-00118.1. In short, the method includes the uncertainty in the lidar-derived elevation data (root mean square error, or RMSE) and the uncertainty in the modeled tidal surface from the NOAA VDATUM model (RMSE). This uncertainty is combined and mapped to show that the inundation depicted in the viewer is not really a hard line, but rather a zone with greater and lesser chances of getting wet.

Data in this tab do not depict uncertainties associated with climate change models and SLR in any way.

“Areas not mapped”

These hash-marked areas indicate places where adequate accuracy elevation data (see question on data accuracy) were not available for mapping.

Marsh

Maps represent the potential distribution of several marsh and wetland types based on their ecological (tidal) niche and the resulting elevation under several scenarios of sea level rise and sediment accretion. As sea levels increase, each tidal niche raises in relation to this amount, as well as any offsetting accretion values (selected by the user). This can be thought of as a bathtub style model where there is a separate layer or surface for the threshold between each wetland type. As a result, some marshes may migrate into neighboring low-lying areas, while other sections of marsh will be lost to open water. A simple explanation of the mapping assumptions is as follows:

current sea level elevation + amount sea level rise - accretion = net marsh impact

The initial starting condition (0 feet of sea level rise) is derived from NOAA’s Coastal Change Analysis Program (C-CAP) (coast.noaa.gov/digitalcoast/data/ccapregional) land cover data. High and medium intensity development classes are treated as barriers to marsh migration.

A more in-depth method for mapping marsh migration can be found here:
coast.noaa.gov/slr/assets/pdfs/Marsh_Migration_Methods.pdf

Literature-supported average sediment accretion rates are used.

“Areas not mapped”

These hash-marked areas indicate places where adequate accuracy elevation data (see question on data accuracy) were not available for mapping.

Socioeconomic Vulnerability

By overlaying social and economic data on a map that depicts sea level rise, a community can see the potential impact that sea level rise can have on vulnerable people and businesses.

Social

The Social Vulnerability Index (SOVI), which shows areas of high human vulnerability to hazards, is based on population attributes (e.g., age and poverty) and the built environment. By looking at the intersection of potential sea level rise and vulnerable block groups, one can get an idea of how vulnerable populations might be affected by sea level rise.

Dark red indicates block groups having a high vulnerability, and the lighter reds indicate decreasing vulnerability. Currently, this information is based on 2010 census tracts. The method for creating the SOVI data is available from the University of South Carolina Hazards and Vulnerability Research Institute, the creators of the data set:
<http://webra.cas.sc.edu/hvri/products/sovi.aspx>

Flood Frequency

Shallow Coastal Flooding Areas

Many coastal areas experience periodic minor-to-moderate shallow coastal flooding events—typically as a result of a combination of meteorological factors that may include higher high tides, winds, and rain.

This map illustrates the extent of flood-prone coastal areas based on predicted water levels exceeding specific tidal heights as issued by local National Weather Service Weather Forecast Offices (WFOs). Each coastal National Weather Service WFO uses a criterion for coastal flooding based on NOAA tide gauge readings. When water levels go above this threshold, impacts to people and property occur. We have used these thresholds to map the inundation extents in order to visualize the flooding that would occur during a forecast flood event. The red layer in the map depicts areas that are currently subject to shallow coastal flooding according to the best available elevation data and local flooding thresholds.

“Areas not mapped”

These hash-marked areas indicate places where adequate accuracy elevation data (see question on data accuracy) were not available for mapping. The Hawaiian Islands, Guam, Saipan, Puerto Rico, and the Virgin Islands are not currently mapped because of undefined coastal flooding thresholds. These areas have more complex flooding scenarios using local criteria from a combination of large swell events added to high tides that are not easily captured by tide gauges alone. These areas require additional analyses and future work to identify and map coastal flood advisories as depicted in other geographic regions based solely on tidal threshold exceedance.

Tide Gauges

NOAA tide stations in the map are “clickable” to view information on the current frequency of coastal flood events and durations compared to hypothetical half-meter and one-meter sea level rise scenarios. The coastal flood event frequencies and durations for tide gauges were calculated using observed tidal data over a three-year period (2007-2009). The future frequency and duration predictions are based on the addition of half-meter and one-meter sea level rise scenarios to the observed water levels over the three-year period. More details on the methods used to determine the flood frequency can be found here:

coast.noaa.gov/slr/assets/pdfs/CO-OPS_Flood_Frequency_Methods.pdf

What is the accuracy of the mapping used in this tool?

The maps in the viewer are derived from source elevation data that meet or exceed the Federal Emergency Management Agency (FEMA) mapping specifications for the National Flood Insurance Program.

- 0.6 feet (18.5 cm) root mean square error (RMSE) for low relief terrain
- 1.2 feet (37.0 cm) RMSE for high relief terrain

Areas that do not have elevation data that meet this criteria are shown as “Areas not mapped” in the viewer.

NOAA’s VDatum model adds additional error (RMSE) to the base data that ranges from several centimeters to tens of centimeters depending on location.

What is VDATUM?

The NOAA VDatum model converts elevation data between tidal, orthometric, and ellipsoidal vertical datums, allowing users to establish a common reference system for all elevation data sets. VDatum is based on a hydrodynamic model to convert between tidal and orthometric datums. For more information: coast.noaa.gov/digitalcoast/tools/vdatum

How often is the mapping updated with new elevation data?

Sea level rise and coastal flooding mapping data for all the coastal states and territories are currently in the viewer (except for Alaska; see status question above). However, new elevation data are continuously being collected by various federal, state, and local entities, so it is possible that newer data have been collected since the mapping areas were originally populated. Since all coastal areas (except for Alaska) have been mapped, we do plan to update the viewer when warranted. Updates are determined based on several factors, including the quality and extent of new elevation data, as well as Office for Coastal Management and partner priorities.

How do I access the data layers in the viewer?

To access the data layers that are shown in the viewer:

1. File Geodatabases – coast.noaa.gov/slrdata
2. Tiled and Cached REST services – coast.noaa.gov/arcgis/rest/services/dc_slr

Can I get the digital elevation models (DEMs) that were used to create the layers in the viewer, and how are they different from most other DEMs?

DEMs used to create the layers in the viewer are available at coast.noaa.gov/slrdata. Metadata explaining use restrictions, appropriate uses, and source data will be included. Building the DEMs for the viewer is by far the most time-consuming process step. DEMs are created by first gathering the best available lidar-based elevation data (see data accuracy question). This includes raw and/or bare earth lidar data, digitized breaklines (where available), National Hydrography Dataset boundaries, National Wetland Inventory boundaries, levee centerlines, and elevations. Not all these sources are used in a single DEM, but rather a combination is used where data gaps exist to adequately condition the DEM for mapping purposes. Conditioning the DEM means including hydro-features and breaklines in the DEM to make sure areas that currently experience flooding are depicted accurately. For example, bridges are removed so breaks in the DEM will not separate water bodies in the final map product. The specifications for hydro-flattening the DEMs for sea level rise (SLR) mapping are more stringent than other national specifications (e.g., USGS) in that smaller hydrologic features are incorporated into the DEM (Any hydro-feature larger than 10 meters or ~30 feet is included). Because these DEMs are created specifically for SLR mapping, they may not be appropriate to use for other applications, such as FEMA floodplain boundary mapping. For example, water feature elevations have been lowered to -1 feet for mapping purposes.

Modeling Approach

How is this tool different from other national sea level rise mapping efforts?

The purpose of this data viewer is to provide a preliminary look at sea level rise and coastal flooding impacts. The viewer is a screening-level tool that uses the highest accuracy elevation data sets available at the time maps were produced.

The criteria used for mapping the various sea levels in the tool were developed to enable consistent mapping on a national scale. They are as follows:

- Use publicly, best available and accessible elevation data that meet FEMA mapping standards
- Map literature-supported levels of sea level rise (SLR)
- Map SLR on top of mean higher high water (MHHW)
- Incorporate local or regional tidal variation of MHHW for each area
- Evaluate inundation for hydrological connectivity
- Preserve hydrologically unconnected areas greater than one acre in size but display separately from hydrologically connected inundation

Why does the tool show inundation starting at mean higher high water (MHHW)?

For inundation studies for which increased water level scenarios are required to determine the amount of land affected by sea level inundation, the elevation of a tidal datum (such as mean high water, or MHHW, in areas with diurnal tides) is often used as the base elevation. This is because the high water datum represents the elevation of the normal daily excursion of the tide where the land area is normally inundated. Taking this normal extent of inundation into account is important when trying to delineate land areas inundated by abnormal events such as storm surge, tsunami run-up, or sea level change. For more detail, see this NOAA technical report at coast.noaa.gov/digitalcoast/_/pdf/slc-tech.pdf.

Is this viewer based on a “bathtub” modeling approach?

Generally, the process used to map sea level inundation in this viewer can be described as a modified bathtub approach or linear superposition method. The maps in this tool take into account local tidal variability using the NOAA VDATUM model. Tide ranges vary greatly along the U.S. coastline; therefore the highest of the high tides are at different distances relative to the elevation of the land. Taking this into account shows immediate impacts in the viewer, because most developable land is above MHHW.

In addition, the maps take into account the hydroconnectivity of inundated areas, which distinguishes it from a simple bathtub approach. However, the maps also show low-lying areas, which are considered hydrologically “unconnected” areas that may flood. Both hydrologically connected and unconnected areas are determined solely by how well the elevation data capture the area’s hydraulics.

Does this viewer show timing of inundation levels (e.g., 3 feet by 2100)?

Yes, the latest version of this viewer includes a Local Scenarios tab that enables the direct comparison of local sea level rise scenarios with potential inundation impacts.

The five relative sea level rise scenarios that are shown in the tab are derived from NOAA Technical Report NOS CO-OPS 083, [“Global and Regional Sea Level Rise Scenarios for the United States,”](#) using the same methods as the U.S. Army Corps of Engineers [Sea Level Change Curve Calculator](#). These new scenarios were developed by the Sea Level Rise and Coastal Flood Hazard Scenarios and Tools Interagency Task Force, jointly convened by the U.S. Global Change

Research Program and the National Ocean Council as input to the Global Change Research Program's [Sustained Assessment](#) process and [Fourth National Climate Assessment](#). These relative sea level rise scenarios provide a revision to the global scenarios (from Parris and others, 2012), which were developed as input to the [Third National Climate Assessment](#).

These scenarios begin in the year 2000 (versus 1992 in the previous version) and take into account global mean sea level rise, regional changes in ocean circulation, changes in Earth's gravity field due to ice melt redistribution, and local vertical land motion.

A relative sea level rise change adjustment to the current National Tidal Datum Epoch (1983-2001) will cause a minimal offset that may be needed for some applications. The U.S. Army Corps of Engineers sea level rise calculator can correct for this offset.

Based on the accuracy of the elevation and tidal surface data used as mapping inputs, users should round to the nearest one-foot mapping increment to view potential impacts.

Note: We do not show the low scenario, as it is a simple extrapolation of the current sea level trend into the future and has been determined to have a low probability of occurring by 2100. Furthermore, this scenario would be associated with low levels of risk even if it were to occur.

Do the maps shown in this viewer take into account levees and/or hydraulic features (culverts, pipes, levees, bridges)?

The digital elevation models used to map sea level rise in this tool do not incorporate a detailed pipe network analysis or engineering-grade hydrologic analysis (for example, culverts and ditches may not be incorporated, resulting in incorrectly mapped areas).

Levees are displayed as yellow lines, and enclosed leveed areas are displayed as a white stippled pattern.

Major federal leveed areas were assumed high enough and strong enough to protect against inundation depicted in this viewer, and therefore no inundation was mapped in these regions.

Minor (nonfederal) leveed areas were mapped using the best available elevation data that capture leveed features. In some cases, however, breaks in elevation occur along leveed areas because of flood control features being removed from elevation data, limitations of the horizontal and vertical resolution of the elevation data, the occurrence of levee drainage features, and so forth. Flooding behind levees is only depicted if breaks in elevation data occur or if the levee elevations are overtopped by the water surface. At some flood levels, alternate pathways around—not through—levees, walls, dams, and flood gates may exist that allow water to flow into areas protected at lower levels. In general, imperfect levee and elevation data make assessing protection difficult, and small data errors can have large consequences.

As new elevation data become available, or as stakeholders provide additional levee information, the NOAA Office for Coastal Management will periodically update the inundation and levee data.

Do the maps take into account future changes in geomorphology, shoreline change, etc.?

The mapped sea level rise levels (SLR) in this tool do not incorporate future changes in coastal geomorphology and assume present conditions will persist. Geomorphologic changes associated with natural processes and human actions will, of course, be vital in controlling future SLR inundation extents. Failing to consider these processes is a significant limitation of the mapping process. As the scientific community continues to increase its understanding of and skill in predicting these critical processes, the functionality of the tool can be updated. Until then, the above-mentioned effects are still sufficiently unknown that they may compound or offset each other in unpredictable ways, such that including only some processes may cause greater error than ignoring them.

How is the marsh migration mapping different from maps generated from the Sea Level Affecting Marshes Model?

The wetland transition modeling within this tool is based on a rule set similar to that used within the Sea Level Affecting Marshes Model (SLAMM) tool, in that certain categories of wetlands are assumed to occupy designated ecological niches, based on their elevation in relation to existing and future tidal regimes. NOAA's marsh migration modeling is based on NOAA's Coastal Change Analysis Program (C-CAP) land cover data, and does not map the same categories that are typically modeled within SLAMM, which is typically based on National Wetland Inventory (NWI) data.

Both tools also allow users to account for some amount of accretion, but SLAMM has the ability to do so in a more spatially/temporally variable way. It also has the ability to model several additional processes (erosion, etc.), if users have such detailed information to supply. Finally, SLAMM must be run by the user, whereas NOAA's files have all been preprocessed, allowing the user to select the appropriate outputs based upon the scenario of choice.

How is accretion handled in the marsh impact modeling tab of this tool?

While accretion can be highly variable, depending on the geography of an area, proximity to sources of sediment, and specific types of wetland species present, this information is often lacking in the detail needed to drive the detailed wetland impacts models that users desire. Because there are few national sources of these data, NOAA has chosen several average values. These values include no accretion, low level (2 millimeters (mm)/year), moderate level (4 mm/year), and high level (6 mm/year) accretion.

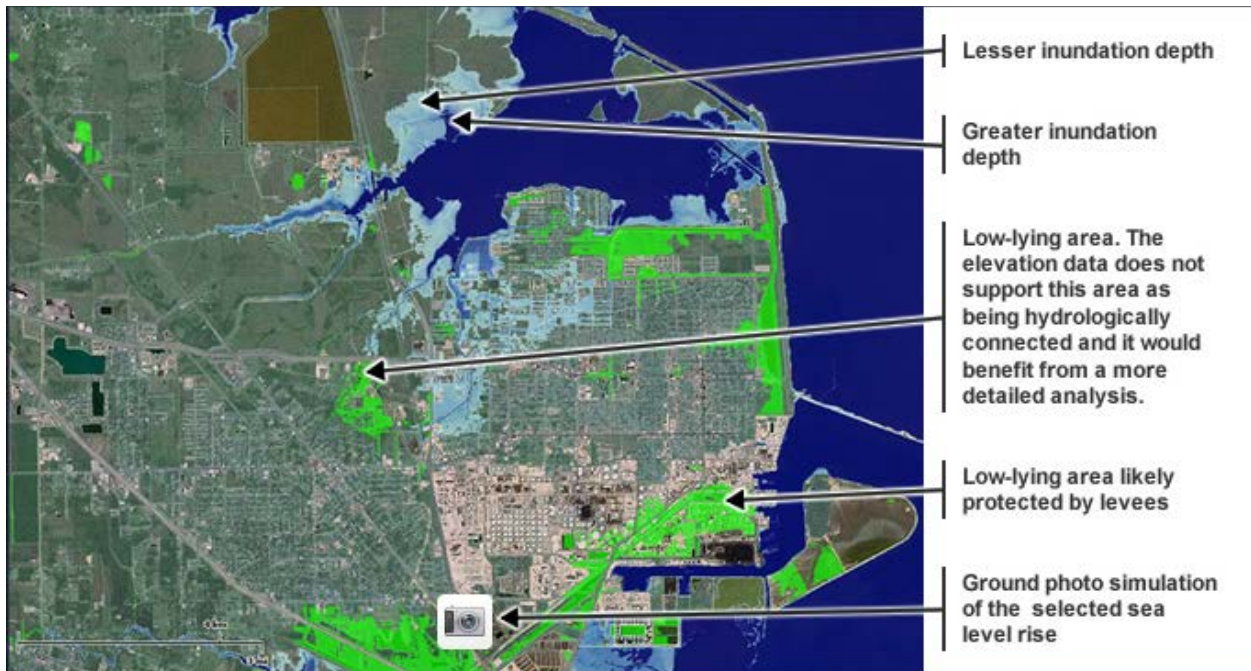
This value is handled as a constant through time, and applied as constant through space. This means that while it is consistently applied (providing a simple apples-to-apples style comparison nationally), it does not account for any spatial (or temporal) variations that exist. If

users are aware of such variations for the geographies in which they are interested, they should look at each of these locations with the different levels of accretion selected within the tool.

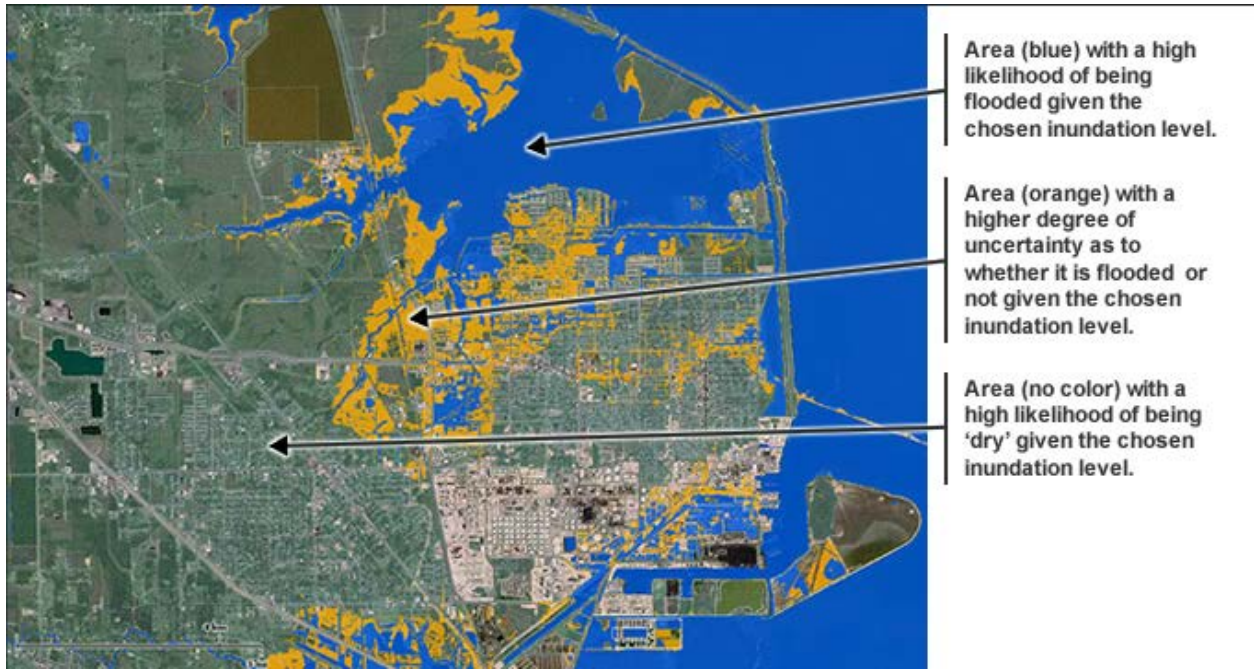
Using the Tool

What am I looking at in each tab or section of the tool?

Sea Level

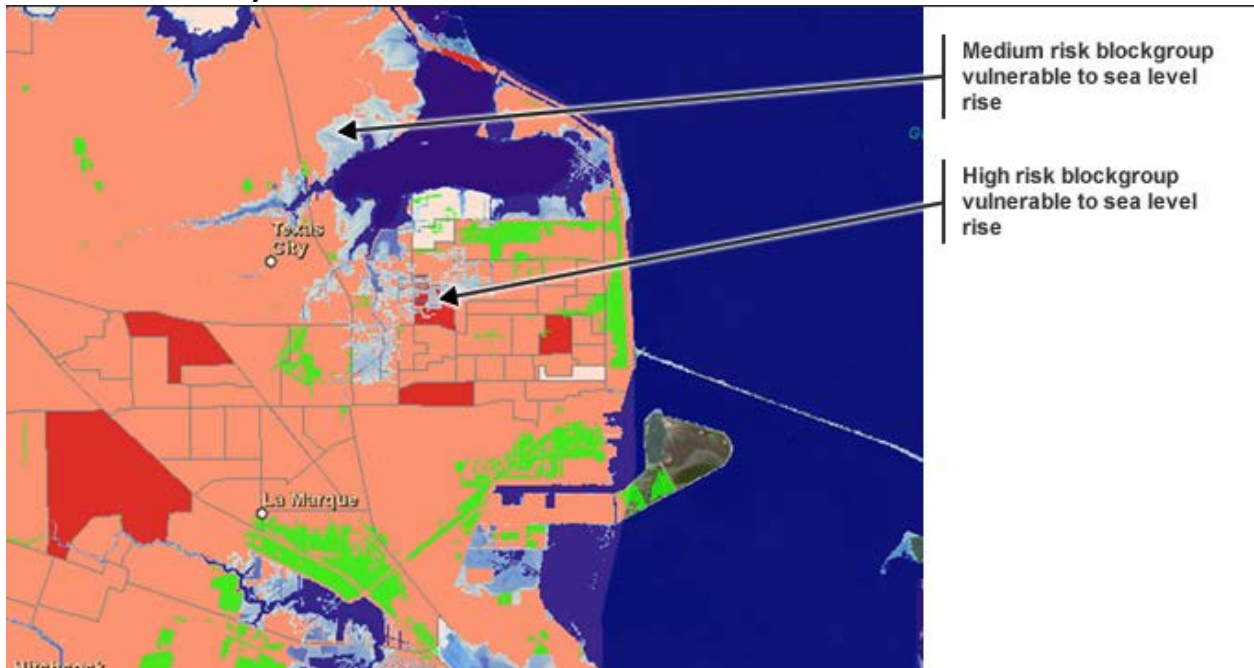


Confidence

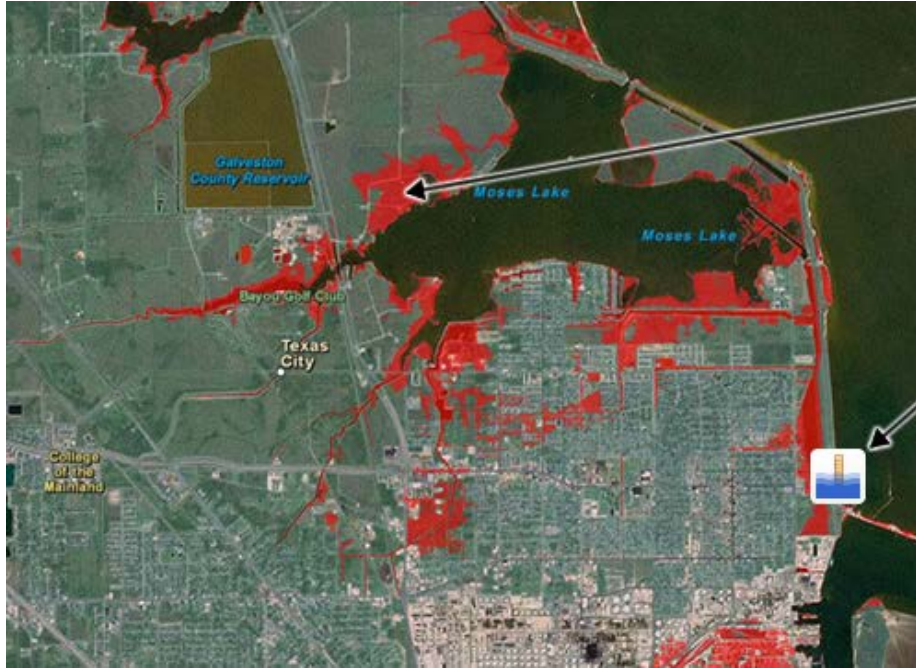


Marsh

Social Vulnerability



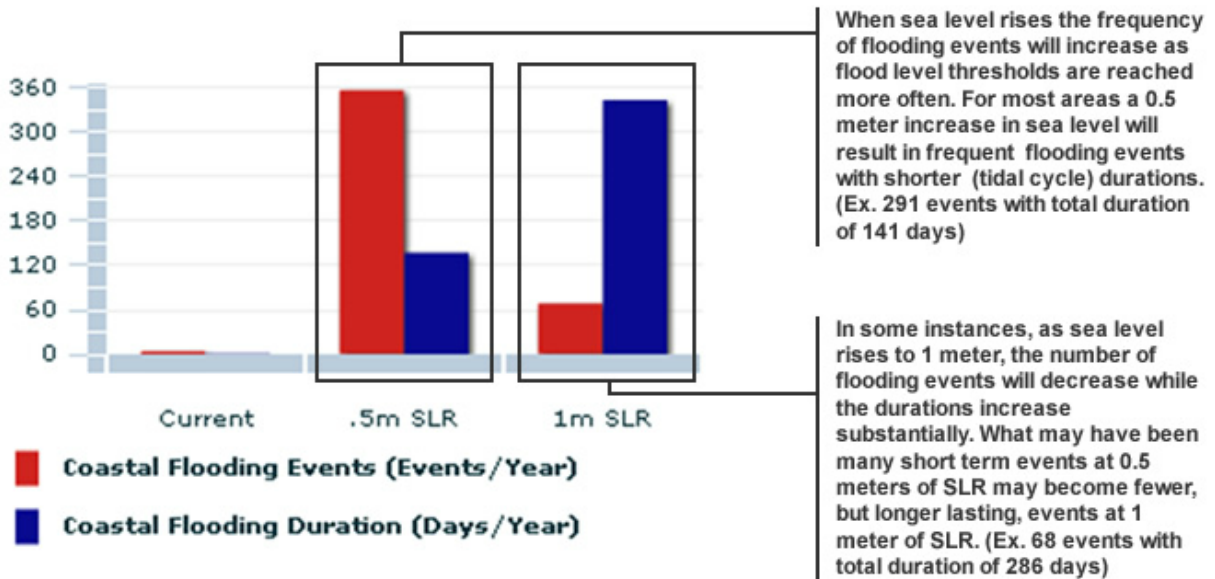
Flood Frequency



Areas susceptible to impacts from shallow coastal flooding based on local tidal heights thresholds.

NOAA Tide Station location. When selected, you will see values for the frequency of current flooding events and durations based on a 3-year average from 2007-2009, as compared with hypothetical values for half-meter and one-meter sea level rise scenarios.

Tide Gauges



How do I get my regional or local GIS data to overlay with the layers in this viewer?

Because the main focus of this tool is to provide a national preliminary look at sea level rise and coastal flooding impacts, ingesting regional or local GIS data into the viewer is impractical. Because of scale, data quality, and consistency issues, we currently do not incorporate these data. The model we are using for regional and local implementation, which will take the national level analysis to the next level, is for regional and local users to either obtain our data layers, or ingest them as Web map services. See the above question on data access. This strategy enables regional and local users to visualize the data layers on their own desktop or Web mapping GIS applications for visualization and analysis.

Can I get the viewer source code?

The viewer was built using HTML 5 and JavaScript, and the code is available upon request.

User Feedback

How do I provide feedback on this tool?

If you have questions or comments about the Sea Level Rise and Coastal Flooding Impacts Viewer or want to request data or information, you can submit them via email at coastal.info@noaa.gov.