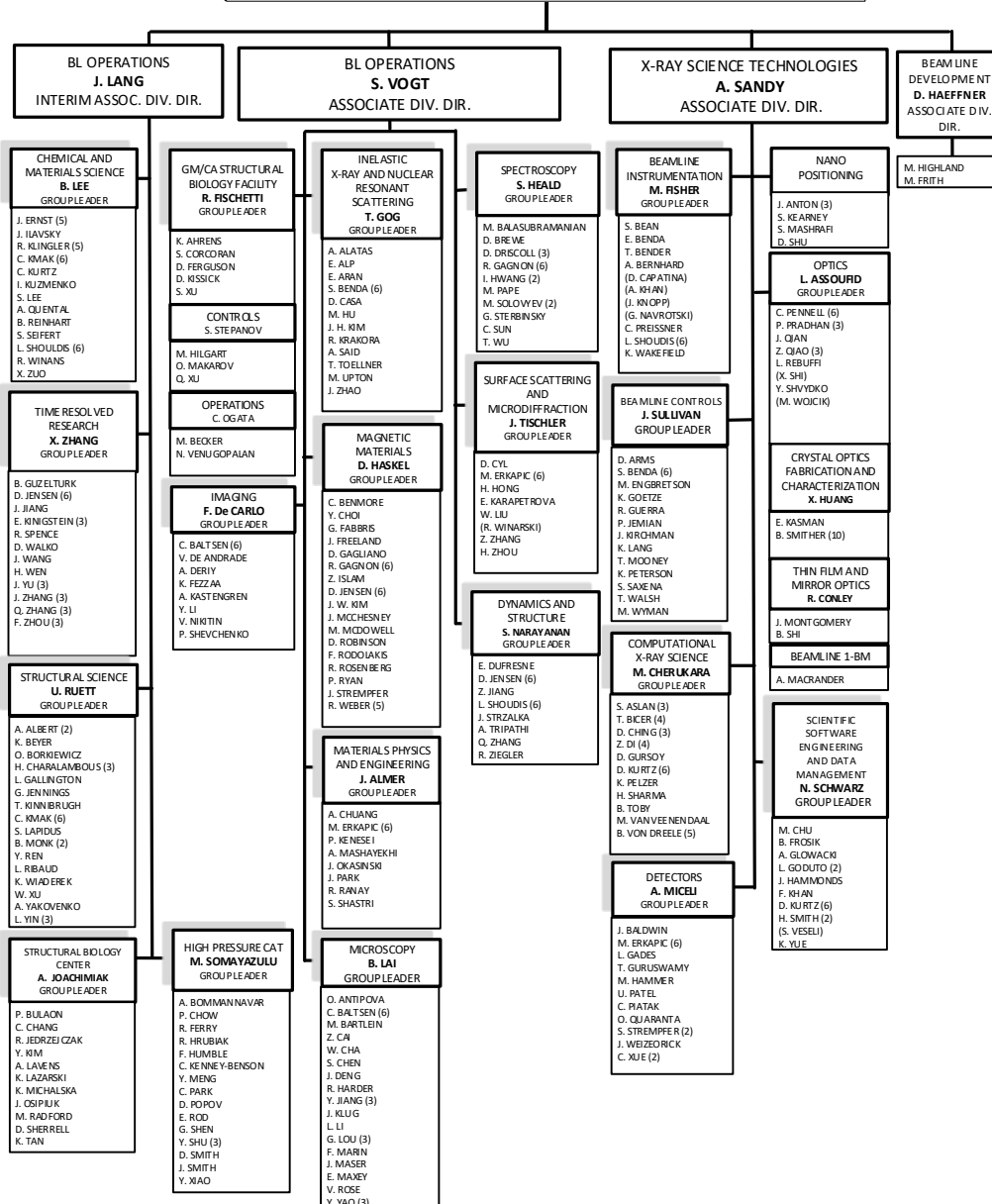


**X-RAY SCIENCE DIVISION**  
**J. LANG**  
DIVISION DIRECTOR  
EXECUTIVE ASSISTANT J. KITCHING

ASSISTANT DIVISION DIRECTOR C. TRATNER (6) ADMINISTRATIVE ASSISTANT Y. BOUDREAU (6)  
ESH COORDINATOR/QA REP. M. FRIES (4) ADMINISTRATIVE ASSISTANT (HR) C. PENNELL (6)  
ADMINISTRATIVE ASSISTANT (ESH) S. BENDA (6)

SENIOR ADVISORY GROUP

B. LAVINA  
G. LONG (10)  
R. REININGER (10)  
A. SCHULTZ (10) (6)



EMPLOYEES MATRIXED ≥ 50% TO A PS UPGRADE ARE LISTED IN HOME DIVISION WITH NAME IN PARENTHESES

- KEY:
- \* REPORT TO THE LABORATORY DIRECTOR
  - (1) INTERIM
  - (2) STUDENT
  - (3) POSTDOCTORAL
  - (4) OTHER DIVISION
  - (5) ARGONNE ASSOCIATE
  - (6) MULTIPLE ASSIGNMENTS
  - (7) CONTRACT PERSONNEL
  - (8) VISITING FACULTY/SCIENTIST
  - (9) LEAVE OF ABSENCE
  - (10) EMERITUS

EFFECTIVE: October 1, 2020

**October 1, 2020**

APPROVED: J. Lang  
Director

DATE