

Emergency Evacuation Procedures

Art Building

1201 Mulberry St. Denton, TX 76201

Severe Weather

In the event of severe weather, all building occupants should immediately seek shelter in the designated shelter-in-place area in the building. If unable to safely move to the designated shelter-in-place area, seek shelter in a windowless interior room or hallway on the lowest floor of the building.

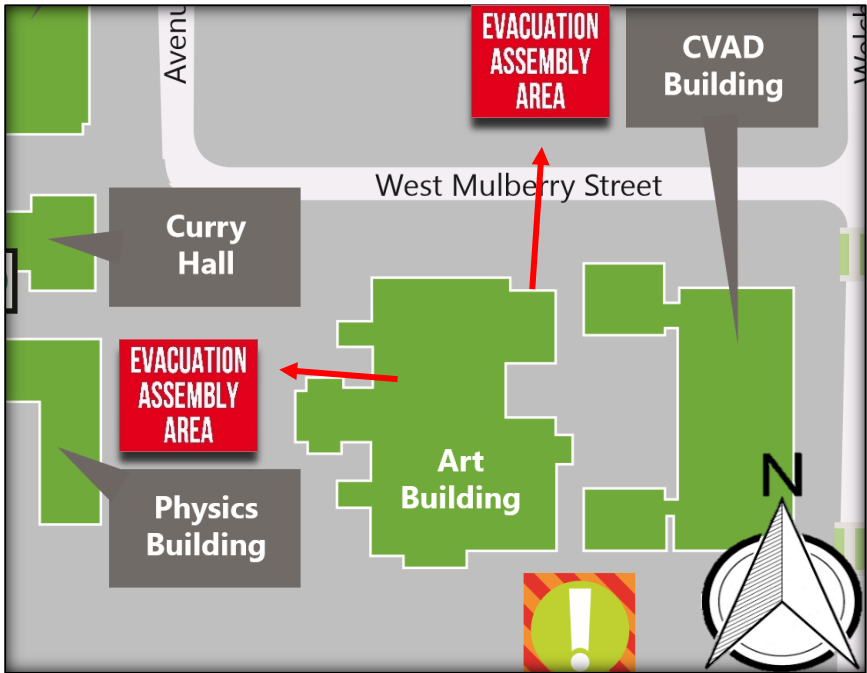
All building occupants should take shelter in the interior hallways on the 1st and 2nd floors. Seek shelter inside restrooms on the lowest floor. Avoid standing near windows, walls and doors made of glass.

Bomb Threat/Fire






In the event of a bomb threat or fire in the building, all building occupants should immediately evacuate the building using the nearest exit. Once outside, proceed to the designated assembly area. If unable to safely move to the designated assembly area, contact one or more members of your department or unit to let them know you are safe and inform them of your whereabouts.

Persons with mobility impairments who are unable to safely exit the building should move to a designated area of refuge and await assistance from emergency responders.

All building occupants should immediately evacuate the building and proceed to the Church parking lot across Mulberry St. or the grassy area in front of the Physics building.



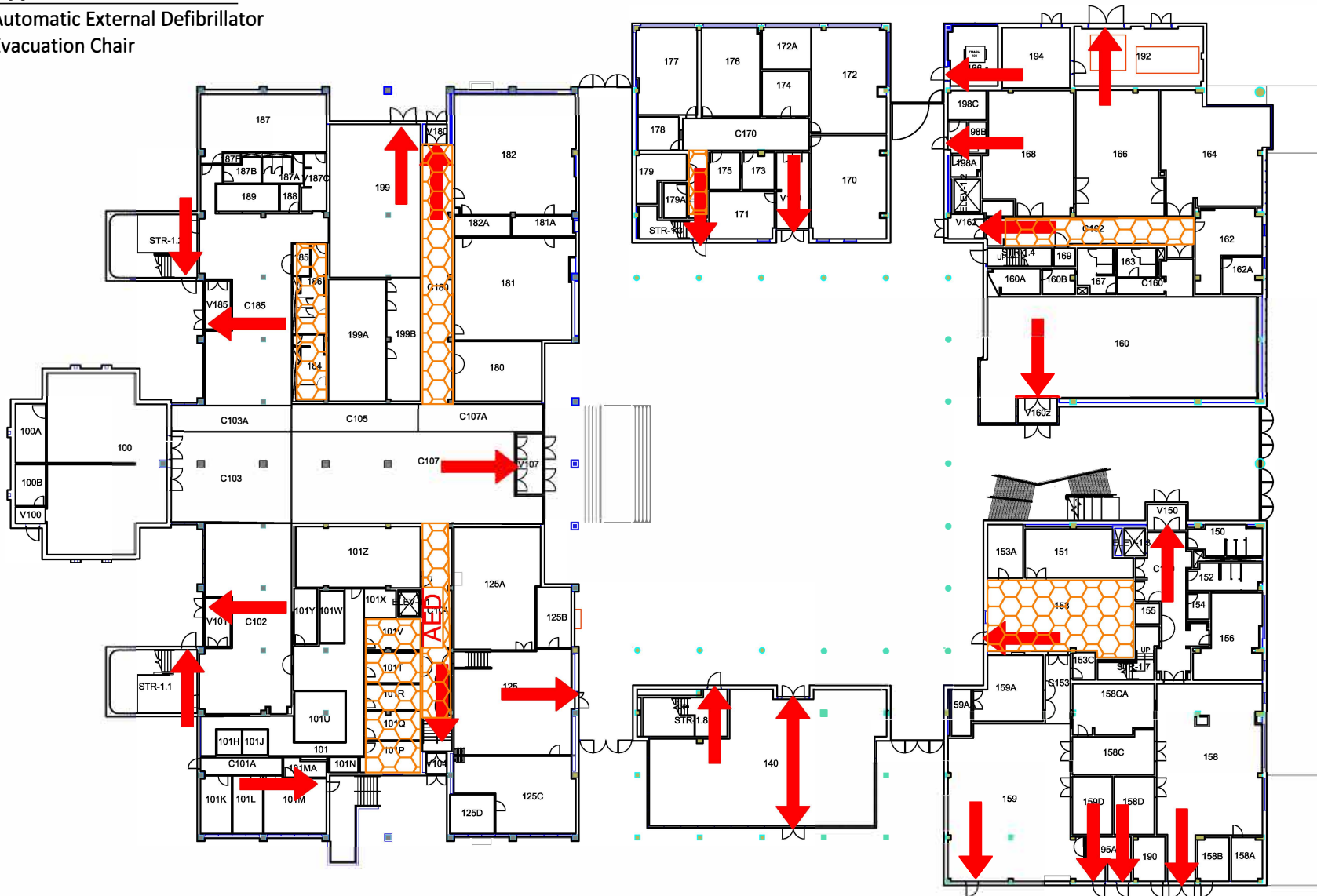
Safety Legend

-  Areas of Refuge
-  Tornado Shelter Areas
-  Exit/Evacuation Routes
In case of fire, do not use elevator
-  AED Automatic External Defibrillator
-  CHAIR Evacuation Chair

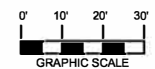
ART BUILDING

BLDG #0153
03-2019

Exterior Gross Area
60162



FIRST FLOOR PLAN





ART BUILDING
BLDG #0153
03-2018

Exterior Gross Area
68693



Safety Legend


 Areas of Refuge

 Tornado Shelter Areas

 Exit/Evacuation Routes

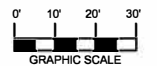
In case of fire, do not use elevator

 Automatic External Defibrillator




 Evacuation Chair



SECOND FLOOR PLAN



Safety Legend

-  Areas of Refuge
 -  Tornado Shelter Areas
 -  Exit/Evacuation Routes
- In case of fire, do not use elevator*

ART BUILDING

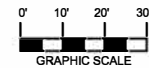
BLDG #0153

03-2018

Exterior Gross Area
69334



THIRD FLOOR PLAN



ART BUILDING

BLDG #0153

03-2018

Exterior Gross Area
24978

Safety Legend



Areas of Refuge

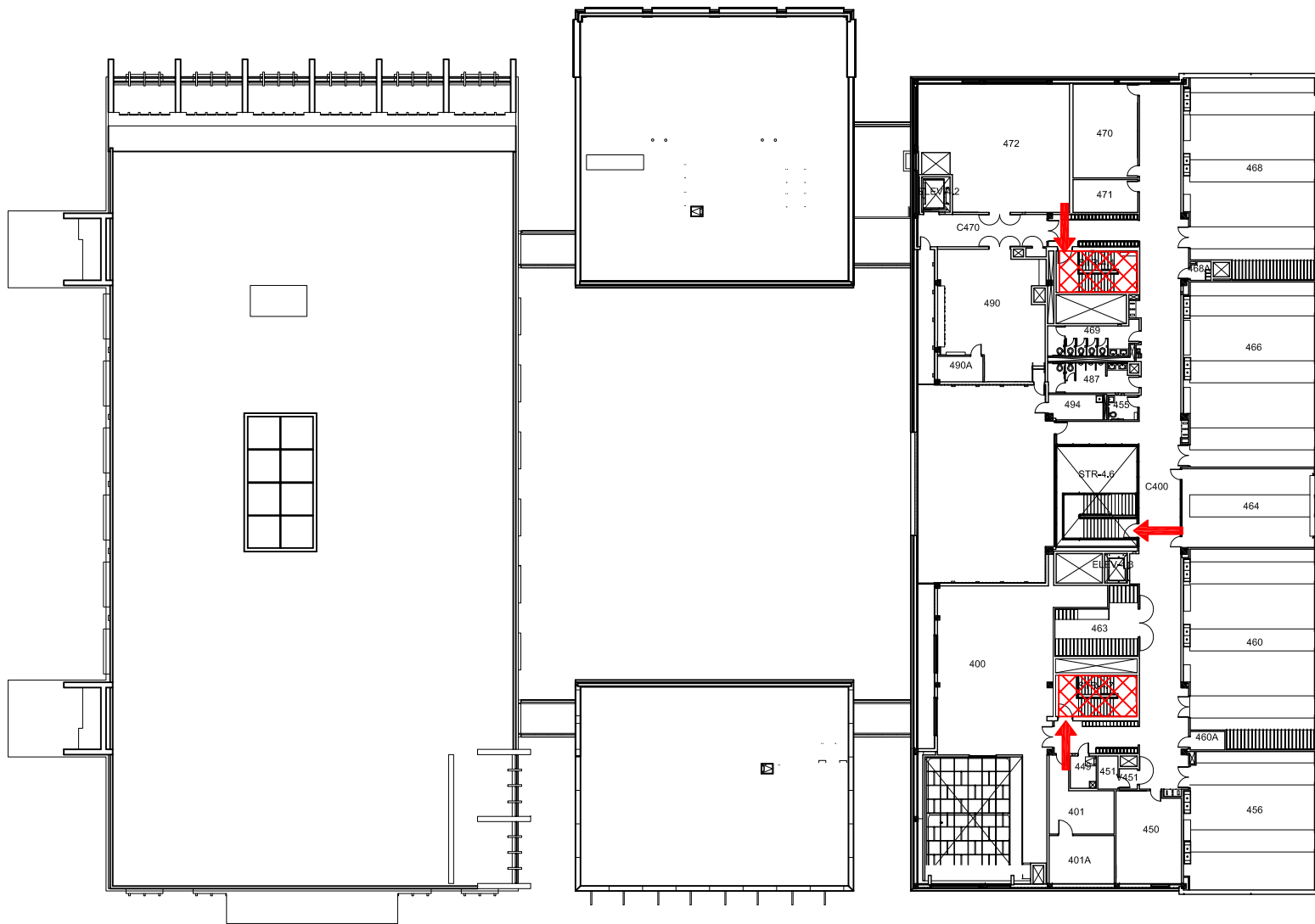


Tornado Shelter Areas

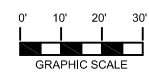


Exit/Evacuation Routes

In case of fire, do not use elevator



FOURTH FLOOR PLAN



GRAPHIC SCALE