

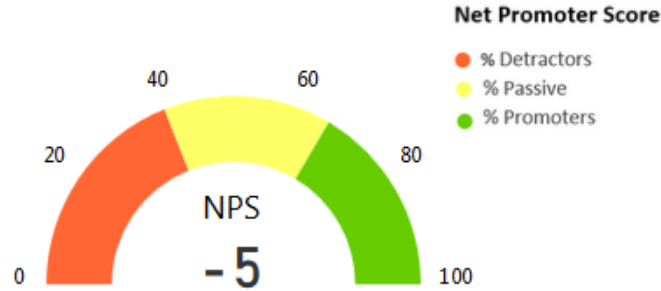
Gallup Engagement Survey 2017

Level 1	Level 2	Level 3	Level 4
Entire Institution	Office of the President - Mong Jr		
		Finance & Admin - Edelman	
		Office of the Provost - Provost	
			College of Law - Furgeson Jr.
			School of Business - Shumway
			School of Education - Gasko
			School of Human Services - Lacy
		School of Lib Arts & Sciences - Balas	
VP Student Access & Success - Holley			

Gallup Engagement Survey 2017 Level 1

Level 1

■ Entire Institution



192

Respondents

This is the greatest number of respondents on any one question

3.80

Grand Mean

This represents the unit's overall engagement on a scale of 1-5

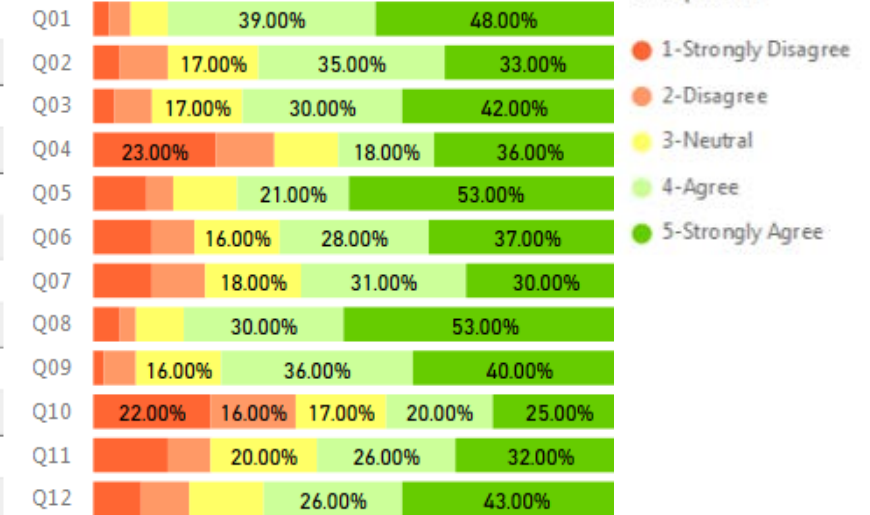
34

Percentile - Education Services Benchmark

This represents the unit percentile ranking compared to the Gallup education services database

QuestionID	Question Short	Mean	Size	Gallup percentile
Q01	Know what's expected	4.24	192	29
Q02	Materials and equipment	3.82	192	30
Q03	Opportunity to do best	4.01	191	44
Q04	Recognition	3.33	185	29
Q05	Cares about me	4.01	190	37
Q06	Development	3.74	190	34
Q07	Opinions Count	3.59	191	33
Q08	Mission/Purpose	4.23	192	55
Q09	Committed to quality	4.06	191	41
Q10	Best friend	3.11	173	15
Q11	Progress	3.54	184	25
Q12	Learn and Grow	3.86	184	33

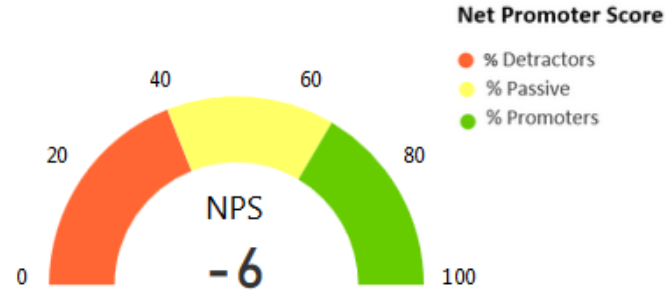
Frequency Distribution



Gallup Engagement Survey 2017 Level 2

Level 2

Office of the President - Mong Jr



191

Respondents

This is the greatest number of respondents on any one question

3.79

Grand Mean

This represents the unit's overall engagement on a scale of 1-5

33

Percentile - Education Services Benchmark

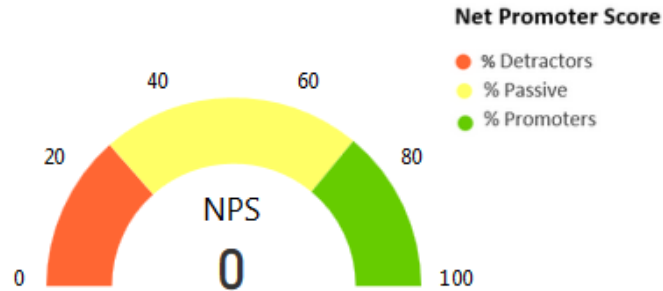
This represents the unit percentile ranking compared to the Gallup education services database

QuestionID	Question Short	Mean	Size	Gallup percentile	Frequency Distribution	% responded-
Q01	Know what's expected	4.24	191	29	39.00% 48.00%	1-Strongly Disagree
Q02	Materials and equipment	3.84	191	32	17.00% 36.00% 34.00%	2-Disagree
Q03	Opportunity to do best	4.00	190	44	17.00% 30.00% 42.00%	3-Neutral
Q04	Recognition	3.32	184	29	23.00% 18.00% 36.00%	4-Agree
Q05	Cares about me	4.01	189	37	21.00% 52.00%	5-Strongly Agree
Q06	Development	3.74	189	34	16.00% 29.00% 37.00%	
Q07	Opinions Count	3.58	190	32	18.00% 32.00% 29.00%	
Q08	Mission/Purpose	4.23	191	55	30.00% 53.00%	
Q09	Committed to quality	4.06	190	41	16.00% 35.00% 41.00%	
Q10	Best friend	3.11	172	15	22.00% 16.00% 17.00% 20.00% 26.00%	
Q11	Progress	3.53	183	24	20.00% 26.00% 32.00%	
Q12	Learn and Grow	3.86	183	33	25.00% 44.00%	

Gallup Engagement Survey 2017 Level 3

Level 3

- Finance & Admin - Edelman
- Office of the Provost - Provost
- VP Student Access & Success - Holley



11

Respondents

This is the greatest number of respondents on any one question

4.15

Grand Mean

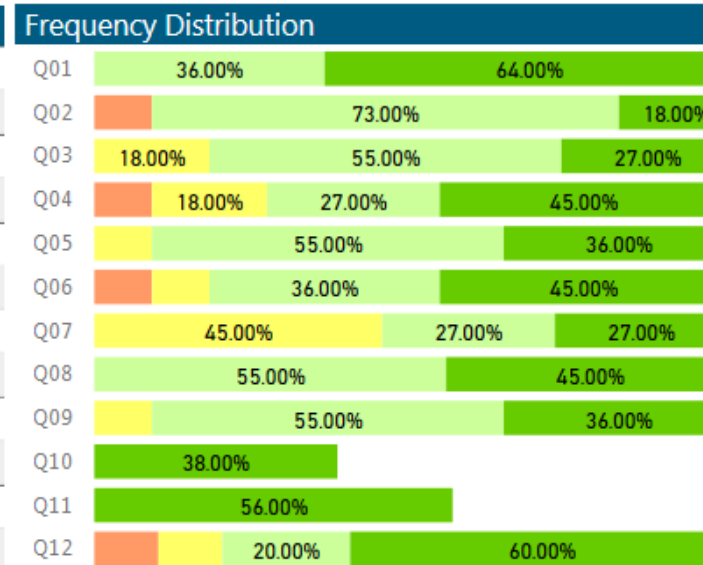
This represents the unit's overall engagement on a scale of 1-5

70

Percentile - Education Services Benchmark

This represents the unit percentile ranking compared to the Gallup education services database

QuestionID	Question Short	Mean	Size	Gallup percentile
Q01	Know what's expected	4.64	11	66
Q02	Materials and equipment	4.00	11	42
Q03	Opportunity to do best	4.09	11	47
Q04	Recognition	4.09	11	65
Q05	Cares about me	4.27	11	51
Q06	Development	4.18	11	59
Q07	Opinions Count	3.82	11	46
Q08	Mission/Purpose	4.45	11	70
Q09	Committed to quality	4.27	11	57
Q10	Best friend	3.38	8	25
Q11	Progress	4.33	9	61
Q12	Learn and Grow	4.30	10	59



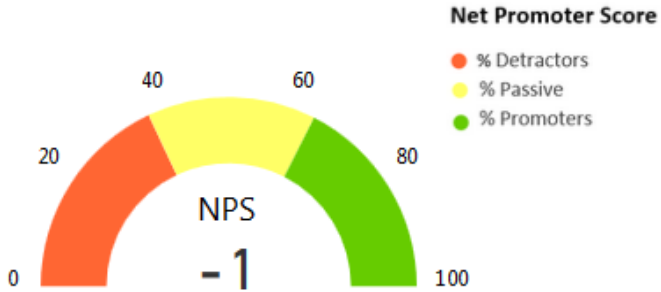
% responded-

- 1-Strongly Disagree
- 2-Disagree
- 3-Neutral
- 4-Agree
- 5-Strongly Agree

Gallup Engagement Survey 2017 Level 3

Level 3

- Finance & Admin - Edelman
- Office of the Provost - Provost
- VP Student Access & Success - Holley



129 Respondents
This is the greatest number of respondents on any one question

3.78 Grand Mean
This represents the unit's overall engagement on a scale of 1-5

32 Percentile - Education Services Benchmark
This represents the unit percentile ranking compared to the Gallup education services database

QuestionID	Question Short	Mean	Size	Gallup percentile
Q01	Know what's expected	4.19	129	26
Q02	Materials and equipment	3.87	129	33
Q03	Opportunity to do best	4.06	128	45
Q04	Recognition	3.28	123	28
Q05	Cares about me	3.98	127	36
Q06	Development	3.72	127	34
Q07	Opinions Count	3.58	128	32
Q08	Mission/Purpose	4.29	129	57
Q09	Committed to quality	4.09	128	43
Q10	Best friend	3.06	115	14
Q11	Progress	3.41	124	21
Q12	Learn and Grow	3.81	124	30

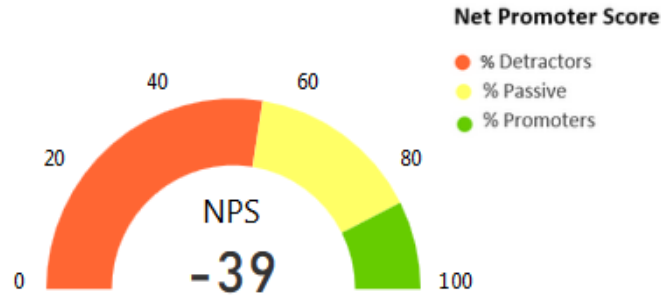
QuestionID	Frequency Distribution
Q01	36.00% 47.00%
Q02	20.00% 32.00% 36.00%
Q03	27.00% 48.00%
Q04	26.00% 16.00% 37.00%
Q05	18.00% 54.00%
Q06	16.00% 28.00% 37.00%
Q07	18.00% 30.00% 31.00%
Q08	26.00% 57.00%
Q09	16.00% 36.00% 41.00%
Q10	23.00% 20.00% 21.00% 23.00%
Q11	16.00% 22.00% 27.00% 27.00%
Q12	24.00% 44.00%

- % responded-
- 1-Strongly Disagree
 - 2-Disagree
 - 3-Neutral
 - 4-Agree
 - 5-Strongly Agree

Gallup Engagement Survey 2017 Level 3

Level 3

- Finance & Admin - Edelman
- Office of the Provost - Provost
- VP Student Access & Success - Holley



33

Respondents

This is the greatest number of respondents on any one question

3.59

Grand Mean

This represents the unit's overall engagement on a scale of 1-5

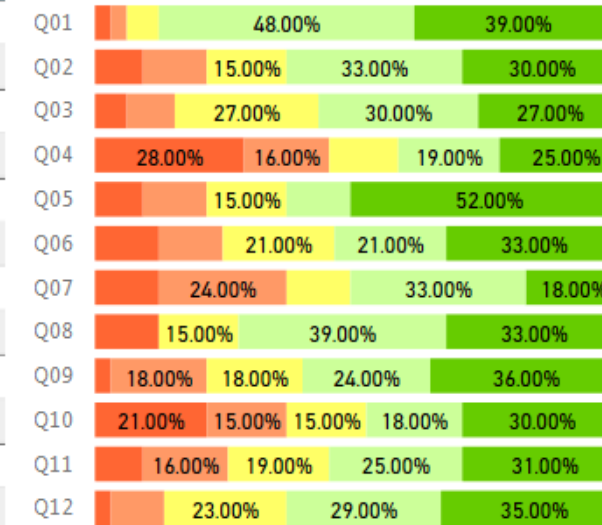
16

Percentile - Education Services Benchmark

This represents the unit percentile ranking compared to the Gallup education services database

QuestionID	Question Short	Mean	Size	Gallup percentile
Q01	Know what's expected	4.18	33	25
Q02	Materials and equipment	3.64	33	21
Q03	Opportunity to do best	3.64	33	21
Q04	Recognition	2.97	32	17
Q05	Cares about me	3.85	33	27
Q06	Development	3.52	33	24
Q07	Opinions Count	3.21	33	17
Q08	Mission/Purpose	3.82	33	29
Q09	Committed to quality	3.73	33	21
Q10	Best friend	3.21	33	18
Q11	Progress	3.53	32	24
Q12	Learn and Grow	3.84	31	32

Frequency Distribution



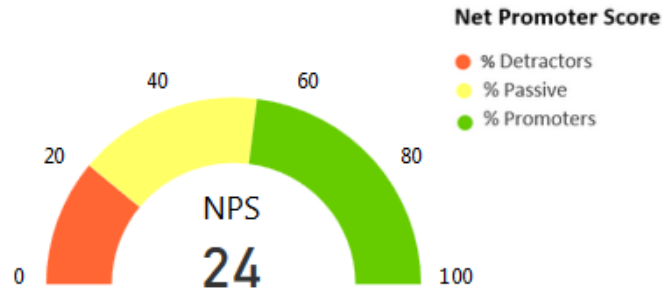
% responded-

- 1-Strongly Disagree
- 2-Disagree
- 3-Neutral
- 4-Agree
- 5-Strongly Agree

Gallup Engagement Survey 2017 Level 4

Level 4

- College of Law - Furgeson Jr.
- School of Business - Shumway
- School of Education - Gasko
- School of Human Services - Lacy
- School of Lib Arts & Sciences - Balas



37

Respondents

This is the greatest number of respondents on any one question

4.12

Grand Mean

This represents the unit's overall engagement on a scale of 1-5

68

Percentile - Education Services Benchmark

This represents the unit percentile ranking compared to the Gallup education services database

QuestionID	Question Short	Mean	Size	Gallup percentile
Q01	Know what's expected	4.46	37	48
Q02	Materials and equipment	4.14	37	49
Q03	Opportunity to do best	4.35	37	65
Q04	Recognition	4.00	37	63
Q05	Cares about me	4.35	37	56
Q06	Development	4.31	36	67
Q07	Opinions Count	3.84	37	48
Q08	Mission/Purpose	4.54	37	74
Q09	Committed to quality	4.22	37	54
Q10	Best friend	3.26	34	20
Q11	Progress	3.76	34	33
Q12	Learn and Grow	4.18	34	51

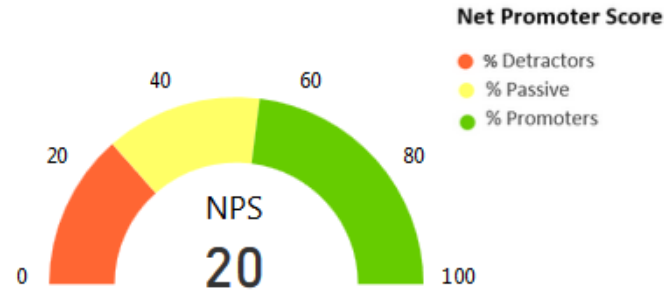
QuestionID	Frequency Distribution
Q01	41.00% 54.00%
Q02	22.00% 32.00% 43.00%
Q03	27.00% 57.00%
Q04	59.00%
Q05	16.00% 68.00%
Q06	25.00% 56.00%
Q07	16.00% 24.00% 43.00%
Q08	24.00% 65.00%
Q09	35.00% 49.00%
Q10	24.00% 21.00% 32.00%
Q11	18.00% 32.00% 35.00%
Q12	26.00% 56.00%

- % responded-
- 1-Strongly Disagree
 - 2-Disagree
 - 3-Neutral
 - 4-Agree
 - 5-Strongly Agree

Gallup Engagement Survey 2017 Level 4

Level 4

- College of Law - Furgeson Jr.
- School of Business - Shumway
- School of Education - Gasko
- School of Human Services - Lacy
- School of Lib Arts & Sciences - Balas



15

Respondents

This is the greatest number of respondents on any one question

3.87

Grand Mean

This represents the unit's overall engagement on a scale of 1-5

41

Percentile - Education Services Benchmark

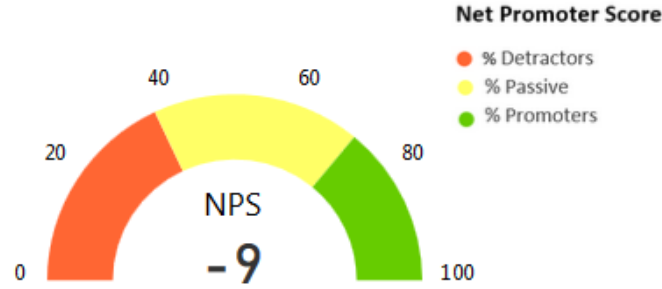
This represents the unit percentile ranking compared to the Gallup education services database

QuestionID	Question Short	Mean	Size	Gallup percentile	Frequency Distribution	% responded-
Q01	Know what's expected	4.33	15	37	33.00% 53.00%	
Q02	Materials and equipment	4.07	15	46	20.00% 33.00% 40.00%	● 1-Strongly Disagree
Q03	Opportunity to do best	4.47	15	74	80.00%	● 2-Disagree
Q04	Recognition	3.23	13	26	23.00% 15.00% 31.00% 23.00%	● 3-Neutral
Q05	Cares about me	3.93	15	31	20.00% 60.00%	● 4-Agree
Q06	Development	3.60	15	27	20.00% 27.00% 33.00%	● 5-Strongly Agree
Q07	Opinions Count	3.80	15	45	40.00% 33.00%	
Q08	Mission/Purpose	4.40	15	66	20.00% 67.00%	
Q09	Committed to quality	4.27	15	57	47.00% 40.00%	
Q10	Best friend	3.36	11	24	18.00% 18.00% 18.00% 36.00%	
Q11	Progress	3.20	15	15	40.00% 27.00%	
Q12	Learn and Grow	3.80	15	30	20.00% 47.00%	

Gallup Engagement Survey 2017 Level 4

Level 4

- College of Law - Furgeson Jr.
- School of Business - Shumway
- School of Education - Gasko
- School of Human Services - Lacy
- School of Lib Arts & Sciences - Balas



11

Respondents

This is the greatest number of respondents on any one question

3.87

Grand Mean

This represents the unit's overall engagement on a scale of 1-5

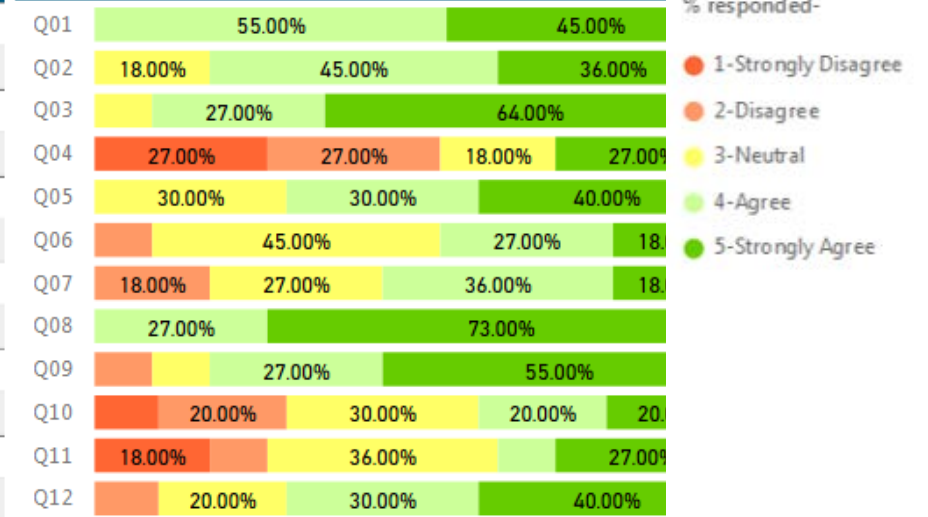
41

Percentile - Education Services Benchmark

This represents the unit percentile ranking compared to the Gallup education services database

QuestionID	Question Short	Mean	Size	Gallup percentile
Q01	Know what's expected	4.45	11	48
Q02	Materials and equipment	4.18	11	54
Q03	Opportunity to do best	4.55	11	77
Q04	Recognition	2.73	11	11
Q05	Cares about me	4.10	10	40
Q06	Development	3.55	11	25
Q07	Opinions Count	3.55	11	31
Q08	Mission/Purpose	4.73	11	85
Q09	Committed to quality	4.27	11	57
Q10	Best friend	3.20	10	17
Q11	Progress	3.18	11	14
Q12	Learn and Grow	4.00	10	43

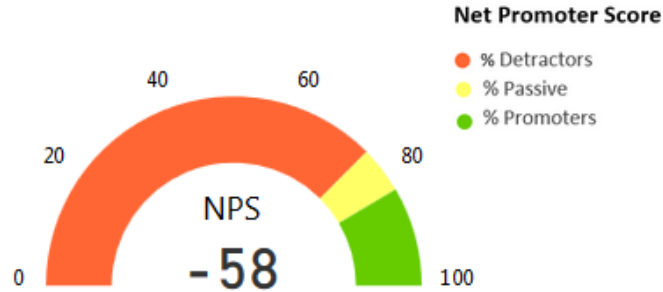
Frequency Distribution



Gallup Engagement Survey 2017 Level 4

Level 4

- College of Law - Furgeson Jr.
- School of Business - Shumway
- School of Education - Gasko
- School of Human Services - Lacy
- School of Lib Arts & Sciences - Balas



12

Respondents

This is the greatest number of respondents on any one question

3.01

Grand Mean

This represents the unit's overall engagement on a scale of 1-5

1

Percentile - Education Services Benchmark

This represents the unit percentile ranking compared to the Gallup education services database

QuestionID	Question Short	Mean	Size	Gallup percentile	Frequency Distribution
Q01	Know what's expected	3.33	12	1	17.00% 17.00% 17.00% 17.00% 33.00%
Q02	Materials and equipment	3.50	12	15	25.00% 17.00% 17.00% 42.00%
Q03	Opportunity to do best	3.25	12	8	17.00% 17.00% 17.00% 25.00% 25.00%
Q04	Recognition	2.55	11	7	45.00% 18.00% 18.00%
Q05	Cares about me	3.17	12	6	25.00% 17.00% 17.00% 33.00%
Q06	Development	2.91	11	7	27.00% 18.00% 36.00%
Q07	Opinions Count	2.92	12	9	33.00% 25.00%
Q08	Mission/Purpose	3.25	12	8	17.00% 25.00% 33.00% 17.00%
Q09	Committed to quality	3.50	12	12	17.00% 42.00% 25.00%
Q10	Best friend	2.67	9	5	11.00%
Q11	Progress	2.45	11	3	36.00% 18.00% 18.00% 18.00%
Q12	Learn and Grow	2.58	12	2	42.00% 17.00% 17.00% 17.00%

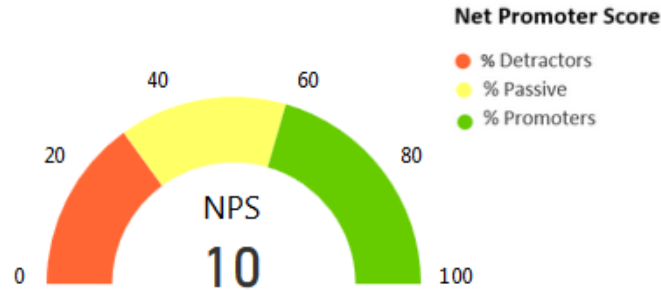
% responded-

- 1-Strongly Disagree
- 2-Disagree
- 3-Neutral
- 4-Agree
- 5-Strongly Agree

Gallup Engagement Survey 2017 Level 4

Level 4

- College of Law - Furgeson Jr.
- School of Business - Shumway
- School of Education - Gasko
- School of Human Services - Lacy
- School of Lib Arts & Sciences - Balas



92

Respondents

This is the greatest number of respondents on any one question

3.80

Grand Mean

This represents the unit's overall engagement on a scale of 1-5

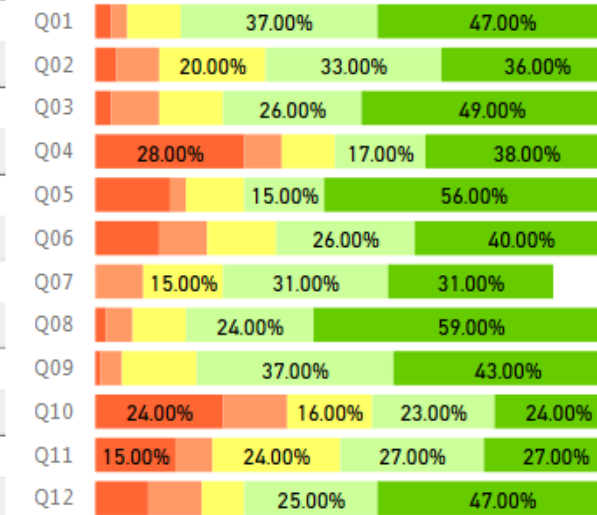
34

Percentile - Education Services Benchmark

This represents the unit percentile ranking compared to the Gallup education services database

QuestionID	Question Short	Mean	Size	Gallup percentile
Q01	Know what's expected	4.21	92	28
Q02	Materials and equipment	3.88	92	34
Q03	Opportunity to do best	4.10	91	47
Q04	Recognition	3.31	87	29
Q05	Cares about me	3.96	91	33
Q06	Development	3.73	91	34
Q07	Opinions Count	3.55	91	31
Q08	Mission/Purpose	4.32	92	60
Q09	Committed to quality	4.16	91	48
Q10	Best friend	3.11	82	15
Q11	Progress	3.45	88	22
Q12	Learn and Grow	3.88	88	34

Frequency Distribution



% responded-

- 1-Strongly Disagree
- 2-Disagree
- 3-Neutral
- 4-Agree
- 5-Strongly Agree