

■ Exam and Research Data Support

The office of Data Management Services, GAB, Room 206, provides the following services.

■ **Exam Grading and Analysis:** Computer-facilitated exam grading providing standard reports with student scores, incorrect responses, class frequency distribution, class statistics, item-analysis and item-statistics.

■ **Research Projects – Data Collection:** Computer-facilitated research-data entry specific to the customer's needs.

■ **Custom Design for Optical Scan Survey Form:** Consultation and design services for the creation of surveys to accurately capture the data desired.

it.unt.edu/erds

it.unt.edu/erds-selfserve

Do you have an idea for better IT?

Submit your idea today!

it.unt.edu/idea4it

IT Idea Center

Benchmarks Online

University Information Technology

IT Department Journal since 1980

IT News Journal • Subscribe today!

benchmarks/it.unt.edu

Contact Information

Call, Click or Come By

Learn more about these UIT resources today!

Elizabeth Hinkle-Turner, director
940-565-4808 | ehinkle@unt.edu

Ray Banks, IT support manager
940-369-8233 | raymond.banks@unt.edu

Yonathan Khoe, IT support supervisor
940-565-2332 | yonathan.khoe@unt.edu

JoAnn Luksich, manager, ERDS
940-369-7416 | joann.luksich@unt.edu



University Information Technology
General Academic Building, Room 107
1155 Union Circle #310709
Denton, TX 76203-5017

P: 940-369-6029 | F: 940-565-4060
Email: unt.uit@unt.edu | Online: it.unt.edu



Instructional Information Technology Services

it.unt.edu/iits

- Computer-Based Testing Services
- Exam & Research Data Services

University Information Technology

- IT User Services
- Instructional IT Services
- Research IT Services
- Student Success IT Services

EST. 1890

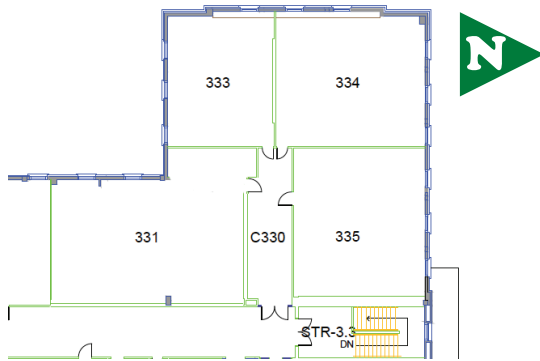
UNT
UNIVERSITY
OF NORTH TEXAS

Computer-Based Testing Services

The computer-based testing services are available for professors of courses that benefit from computerized testing for distance, blended or face-to-face classes. Assessment and testing are cornerstones of academic success and UNT actively supports faculty in the assessment of student learning. The Sage Hall Computer-Based Testing Center, Mobile Laptop Cart and other Instructional Information Technology Services play a strong role in faculty support and student learning.

Sage Hall Computer-Based Testing Center

The center provides an opportunity for secure, high-stakes computer-based testing of large groups of students. The CBTC also provides instructors of UNT's high-enrollment courses with robust opportunities for assessment while also supporting smaller courses, certification testing and training sessions.



The CBTC provides computerized testing with or without proctors, 135 stations in Sage Hall, Room C330, with professional IT support.



Sage Hall CBTC Hours for Reservation:

Monday-Thursday: 8 a.m.-9:30 p.m.

Friday: 8 a.m.-6 p.m.

Saturday: 9 a.m.-6 p.m.

■ **Sage Hall CBTC Drop-in Testing:** Available, but please contact the office first.

Monday-Friday: 8 a.m.-5 p.m.

■ **Sage Hall CBTC Test Monitoring:** The center employs UNT graduate students to serve as exam monitors and proctors and provide assistance to protect academic integrity and security compliance during exams. When making a reservation, ask for test monitors to assist in proctoring assessments.

■ **Sage Hall CBTC Features:** The Sage Hall CBTC has four rooms that can be reserved as an entire 135-station block or in smaller entities.

Rm. 331: 39 stations • Rm. 334: 36 stations

Rm. 333: 24 stations • Rm. 335: 36 stations

Stations in the CBTC are equipped with the following computer configuration.

- Dell OptiPlex 3030 All-In-One
Intel Core i5 3GHz, 8GB RAM
- Windows 10 64-bit OS
- iCheckin self-service login client
- Blackboard Learn support web browsers:
Internet Explorer, Mozilla Firefox and
Google Chrome
- Adobe Acrobat XI Professional
- SSH and SCP clients
- VLC video player
- 7-Zip archive tool
- Microsoft Office 2016
- Certipoint Testing Suite
- Pearson Lockdown Browser

Other software applications, additional security measures and printing facilities are available upon request.

it.unt.edu/test

■ **Mobile Cart Testing Service:** A 30-unit laptop cart that can travel to your classroom is available for on-the-spot online testing.

■ **Discovery Park Testing Services:** Four computer classrooms are available at UNT's Discovery Park, including rooms B140, B142, D212 and D215. Each can be configured and monitored for testing.