

Emergency Evacuation Procedures

Kristin Farmer Autism Center

490 N Interstate 35, Denton, TX 76205

Severe Weather

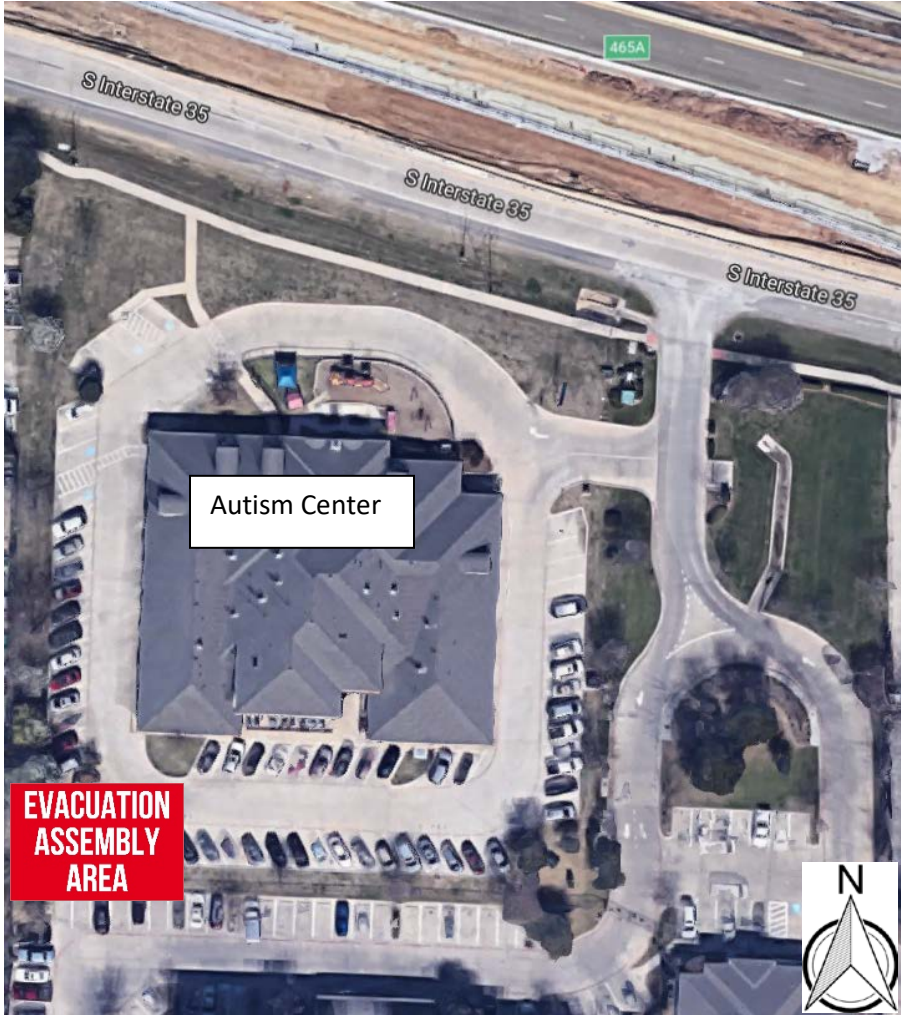
In the event of severe weather, all building occupants should immediately seek shelter in the designated shelter-in-place area in the building. If unable to safely move to the designated shelter-in-place area, seek shelter in a windowless interior room or hallway on the lowest floor of the building.

All building occupants should take shelter in the most interior rooms in the building: 170, 160, 175, 180, 185, 142, 123B, 158, 105, and restrooms

Bomb Threat / Fire

In the event of a bomb threat or fire in the building, all building occupants should immediately evacuate the building using the nearest exit. Once outside, proceed to the designated assembly area. If unable to safely move to the designated assembly area, contact on or more members of your department or unit to let them know you are safe and inform them of your whereabouts.

All building occupants should immediately evacuate the building and proceed to the south west of the lot, to the South of building

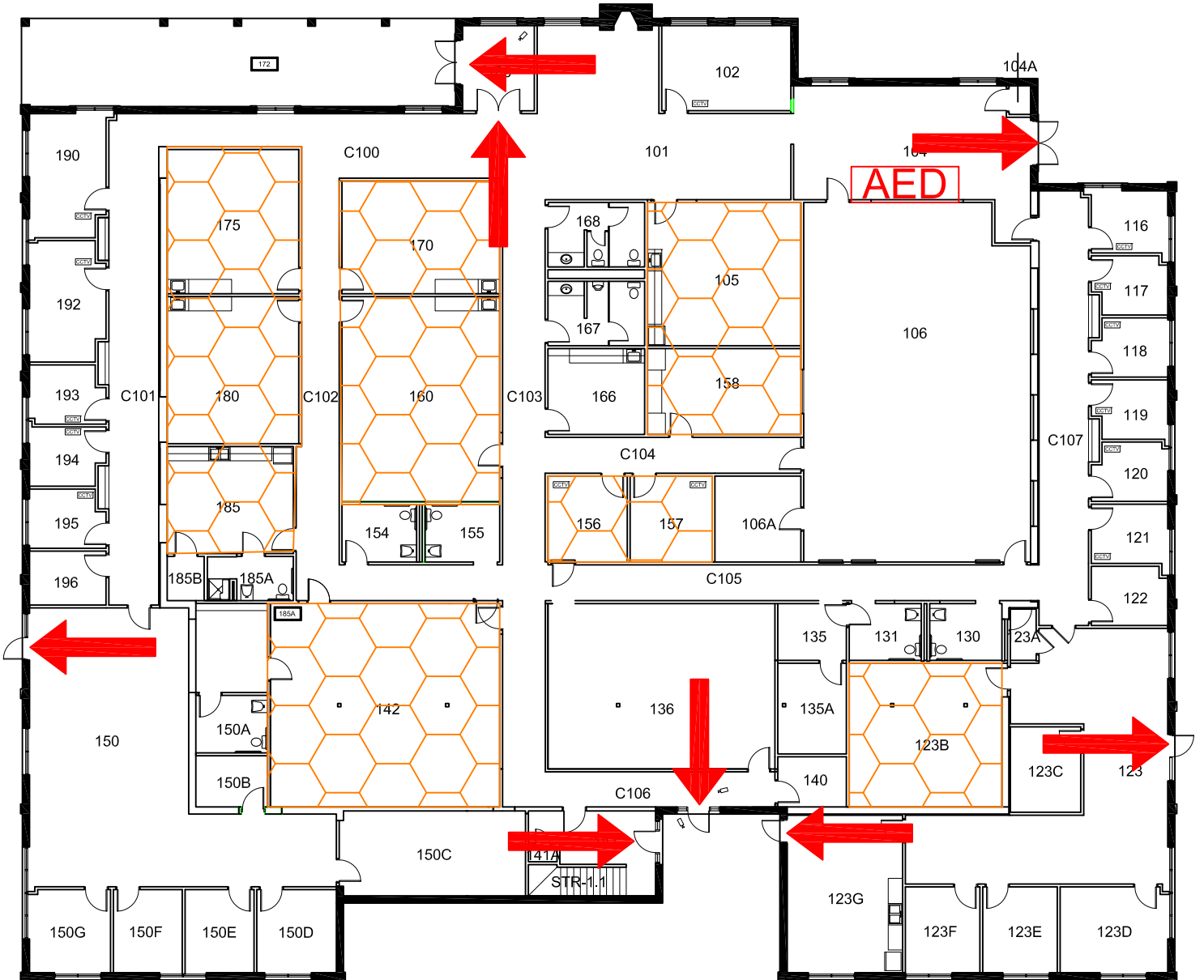


KRISTIN FARMER AUTISM CENTER


BLDG # 0138


02-2013


Exterior Gross Area
19276




Safety Legend

 Areas of Refuge

 Tornado Shelter Areas

 Exit/Evacuation Routes

In case of fire, do not use elevator

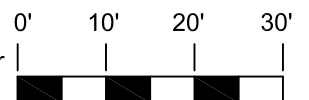
 Automatic External Defibrillator

 Evacuation Chair

N



FIRST FLOOR PLAN



GRAPHIC SCALE