

Emergency Evacuation Procedures

Alpha Delta Pi (House C)

Page Navigation

- [Severe Weather](#)
 - [Bomb Threat/Fire](#)
 - [Building Evacuation Maps](#)
-

Severe Weather

In the event of severe weather, all building occupants should immediately seek shelter in the designated shelter-in-place area in the building. If unable to safely move to the designated shelter-in-place area, seek shelter in a windowless interior room or hallway on the lowest floor of the building.

All building occupants should seek shelter on the first floor in the east and west ends of the center hallway.

Bomb Threat/Fire

In the event of a bomb threat or fire in the building, all building occupants should immediately evacuate the building using the nearest exit. Once outside, proceed to the designated assembly area. If unable to safely move to the designated assembly area, contact your RA to let them know you are safe and inform them of your whereabouts.

Persons with mobility impairments who are unable to safely exit the building should move to a designated area of refuge and await assistance from emergency responders.

All building occupants should proceed to the west end of parking lot 39 west of the building.

Building Evacuation Maps

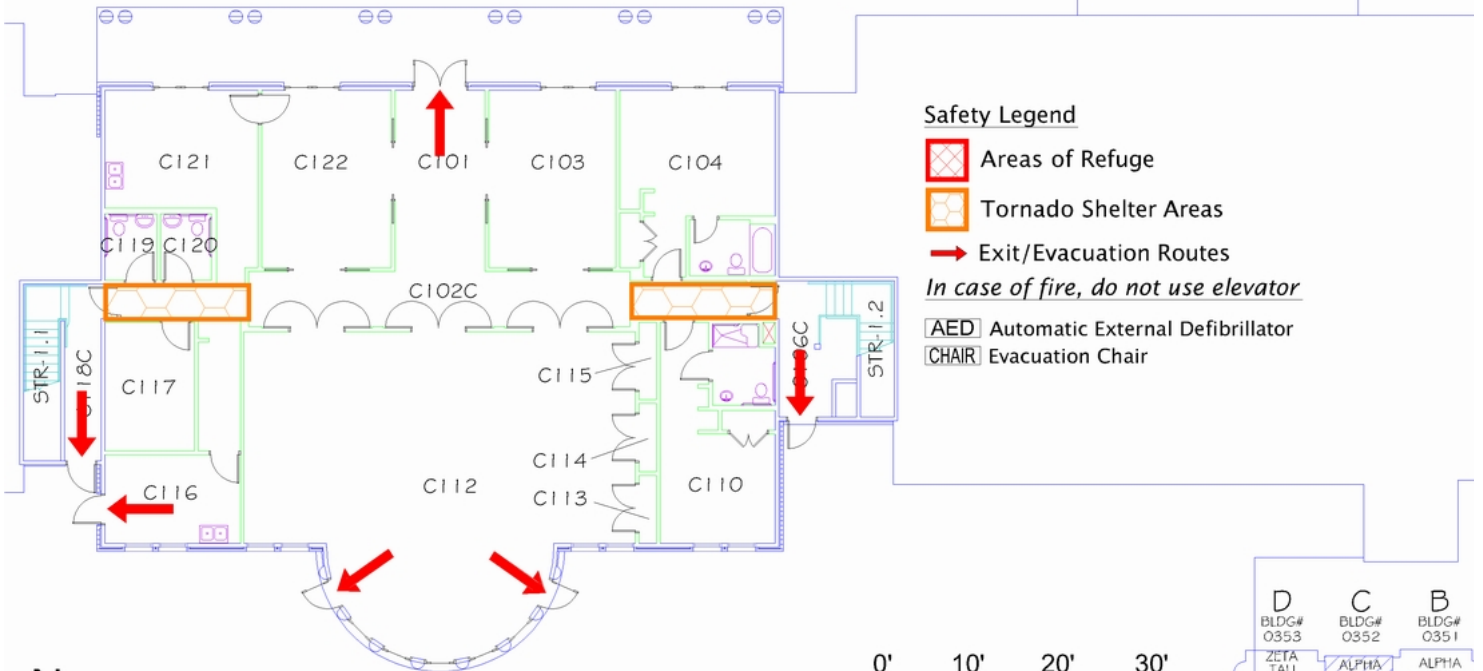
[Print Full Size Map](#)

SORORITY HOUSE C

BUILDING # 0352

05-2007

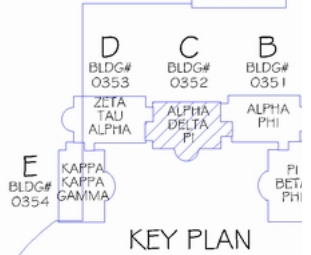
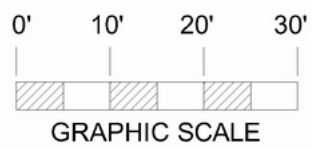
Exterior Gross Area
4263



- Safety Legend**
- Areas of Refuge
 - Tornado Shelter Areas
 - Exit/Evacuation Routes
- In case of fire, do not use elevator*
- AED Automatic External Defibrillator
 - CHAIR Evacuation Chair



FIRST FLOOR PLAN




[Print Full Size Map](#)


SORORITY HOUSE C


BUILDING # 0352
05-2007

Exterior Gross Area
3969

Safety Legend


 Areas of Refuge

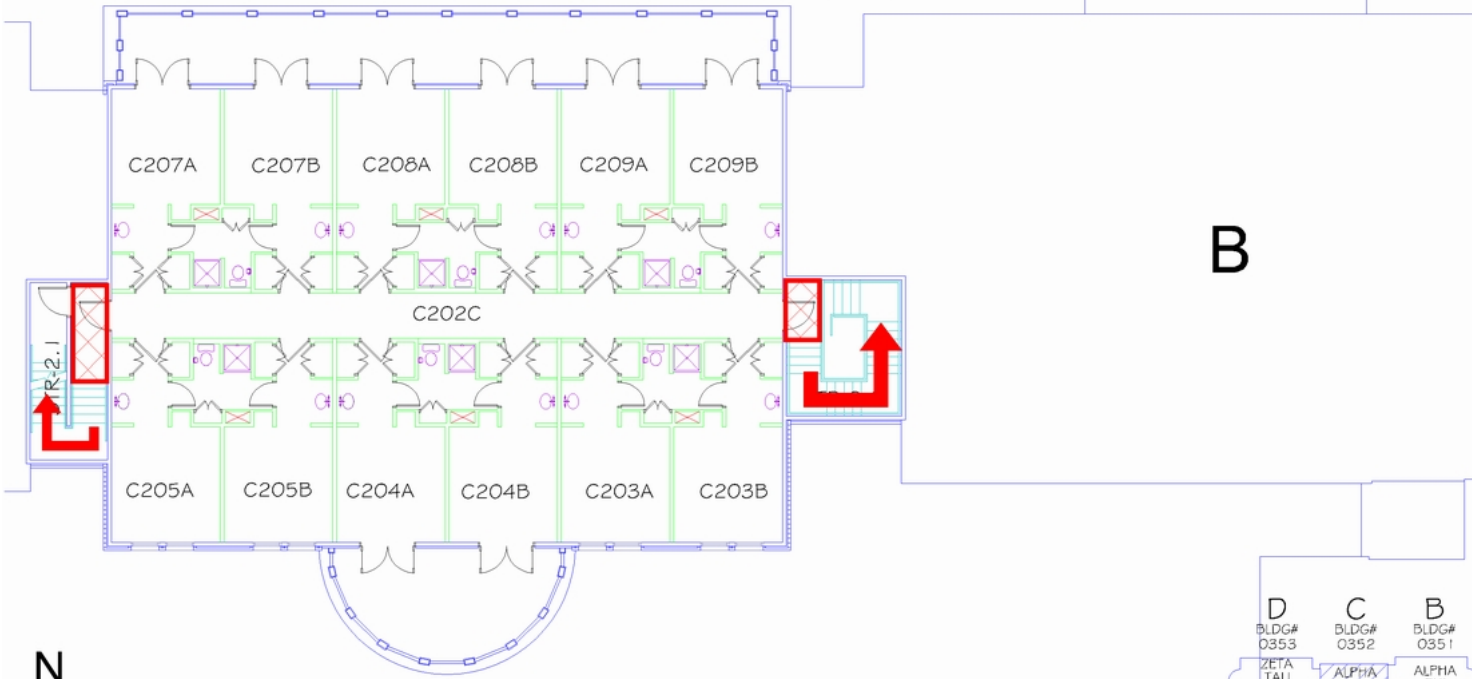
 Tornado Shelter Areas

 Exit/Evacuation Routes

In case of fire, do not use elevator

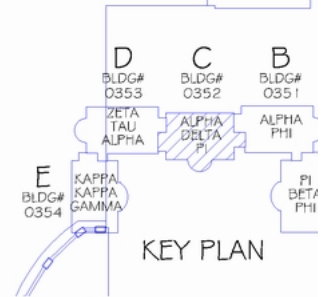
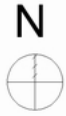
 AED Automatic External Defibrillator

 CHAIR Evacuation Chair



SECOND FLOOR PLAN

B



KEY PLAN