

# Emergency Evacuation Procedures

## Chilton Hall

### Severe Weather

In the event of severe weather, all building occupants should immediately seek shelter in the designated shelter-in-place area in the building. If unable to safely move to the designated shelter-in-place area, seek shelter in a windowless interior room or hallway on the lowest floor of the building.

#### **All building occupants should take shelter in either**

---

- **The Media Library – room 111 on the first floor**
  - **Room 242 B,C, and D. Room 270 and 274 –located on the 2<sup>nd</sup> floor**
- 

### Bomb Threat/Fire

In the event of a bomb threat or fire in the building, all building occupants should immediately evacuate the building using the nearest exit. Once outside, proceed to the designated assembly area. If unable to safely move to the designated assembly area, contact on or more members of your department or unit to let them know you are safe and inform them of your whereabouts.

Persons with mobility impairments who are unable to safely exit the building should move to a designated area of refuge and await assistance from emergency responders.

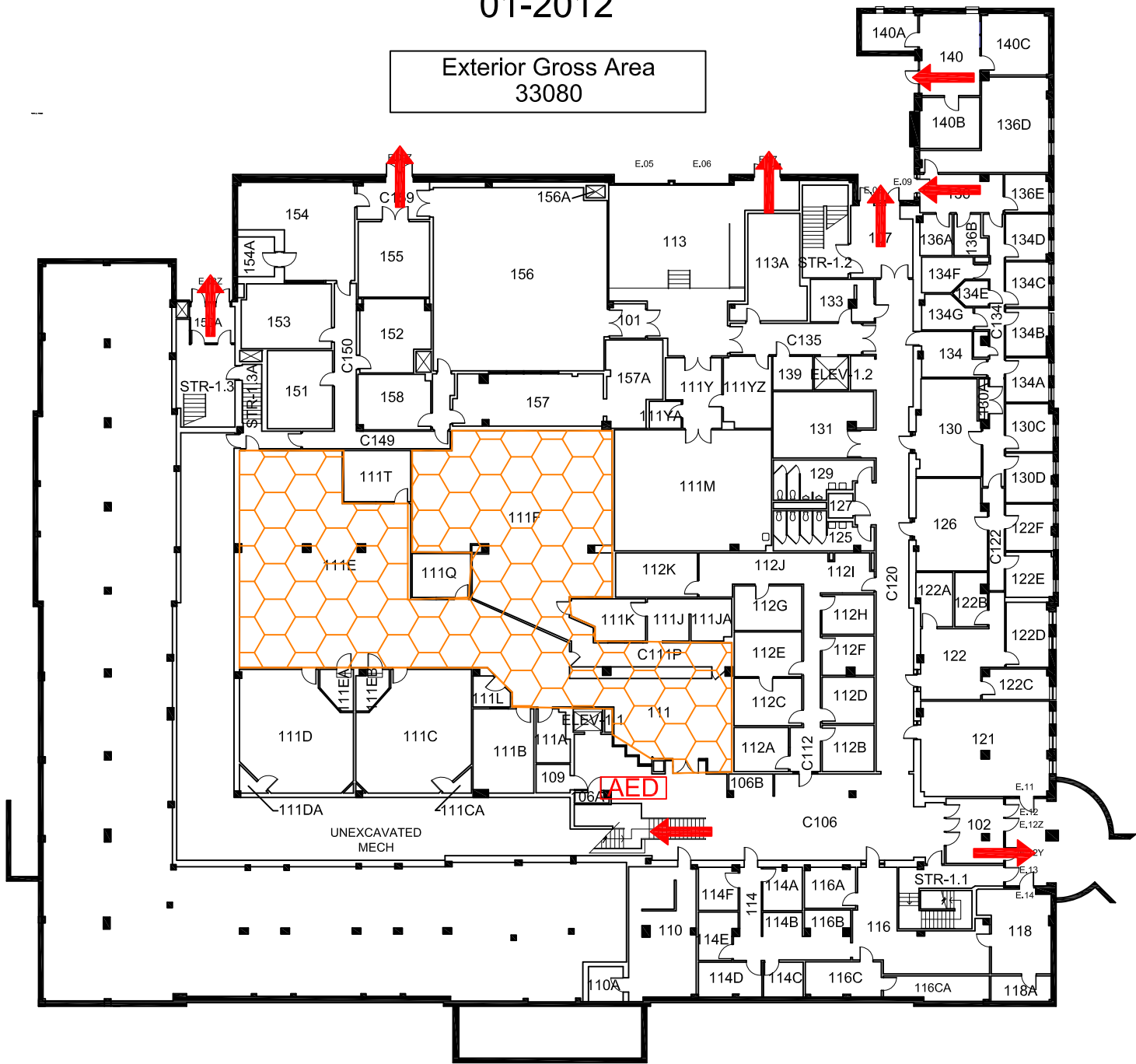
**All building occupants should immediately evacuate the building and proceed to parking lot 4 west of Chilton Hall**

# CHILTON HALL

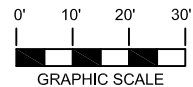
BLDG #0126

01-2012

Exterior Gross Area  
33080



## FIRST FLOOR PLAN



### Safety Legend

- Areas of Refuge
- Tornado Shelter Areas

Exit/Evacuation Routes  
*In case of fire, do not use elevator*

AED Automatic External Defibrillator

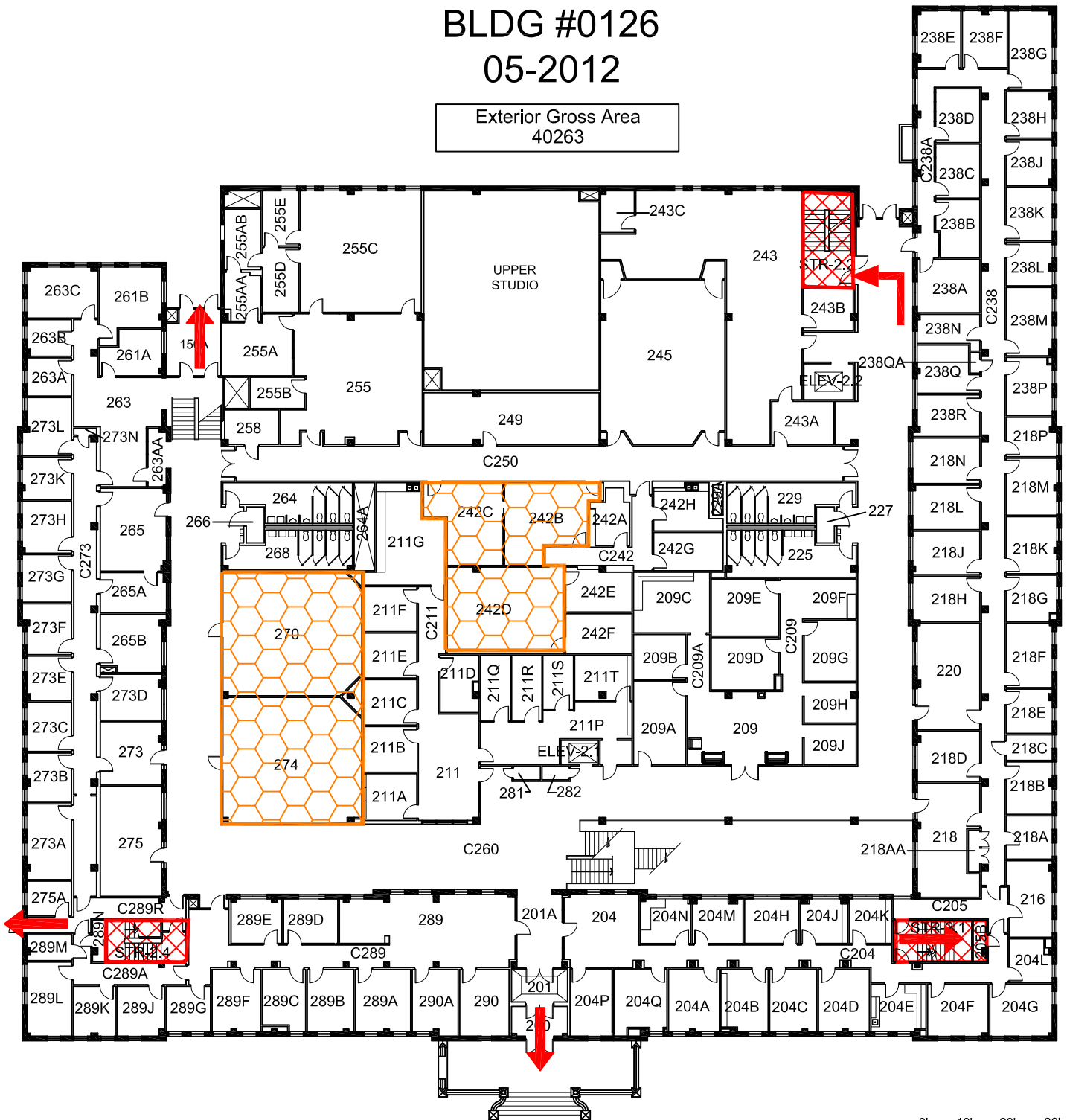
CHAIR Evacuation Chair

# CHILTON HALL

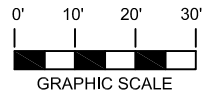
BLDG #0126

05-2012



Exterior Gross Area  
40263






## SECOND FLOOR PLAN



### Safety Legend

-  Areas of Refuge
-  Tornado Shelter Areas

 Exit/Evacuation Routes  
*In case of fire, do not use elevator*

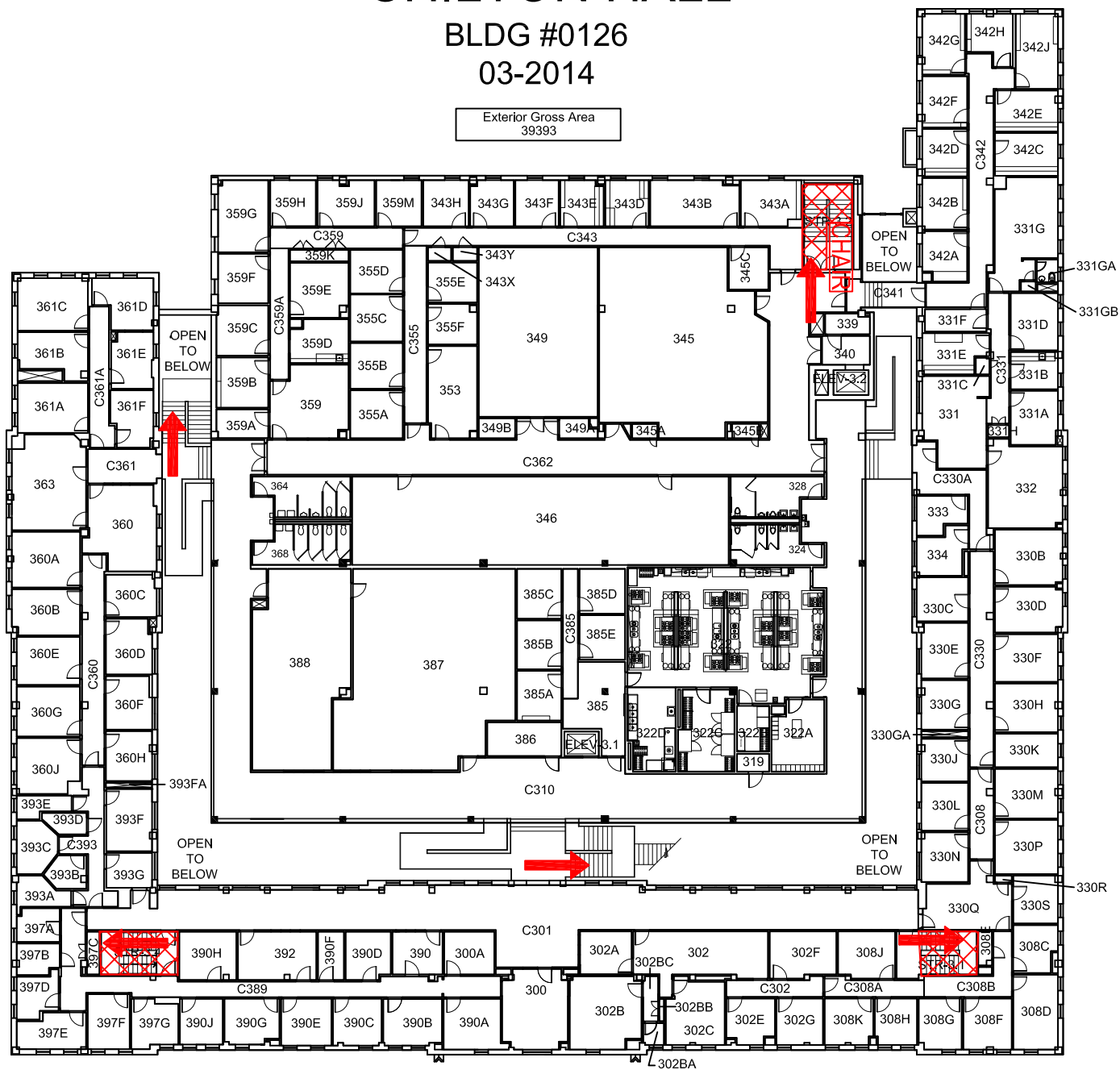
-  Automatic External Defibrillator
-  Evacuation Chair

# CHILTON HALL

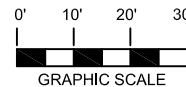
BLDG #0126

03-2014

Exterior Gross Area  
39393



## THIRD FLOOR PLAN



### Safety Legend

- Areas of Refuge
- Tornado Shelter Areas
- Exit/Evacuation Routes
- In case of fire, do not use elevator*
- Automatic External Defibrillator
- Evacuation Chair