

# Emergency Evacuation Procedures

## Athletic Center

### Severe Weather

In the event of severe weather, all building occupants should immediately seek shelter in the designated shelter-in-place area in the building. If unable to safely move to the designated shelter-in-place area, seek shelter in a windowless interior room or hallway on the lowest floor of the building.

**All building occupants should take shelter in the football locker room located in the basement of the building or in the large meeting room, 156.**

---


### Bomb Threat/Fire


In the event of a bomb threat or fire in the building, all building occupants should immediately evacuate the building using the nearest exit. Once outside, proceed to the designated assembly area. If unable to safely move to the designated assembly area, contact one or more members of your department or unit to let them know you are safe and inform them of your whereabouts.


Persons with mobility impairments who are unable to safely exit the building should move to a designated area of refuge and await assistance from emergency responders.


**All building occupants should immediately evacuate the building and proceed to parking lot 83 west of the building.**


Safety Legend

 Areas of Refuge

 Tornado Shelter Areas

 Exit/Evacuation Routes  
*In case of fire, do not use elevator*

 AED Automatic External Defibrillator

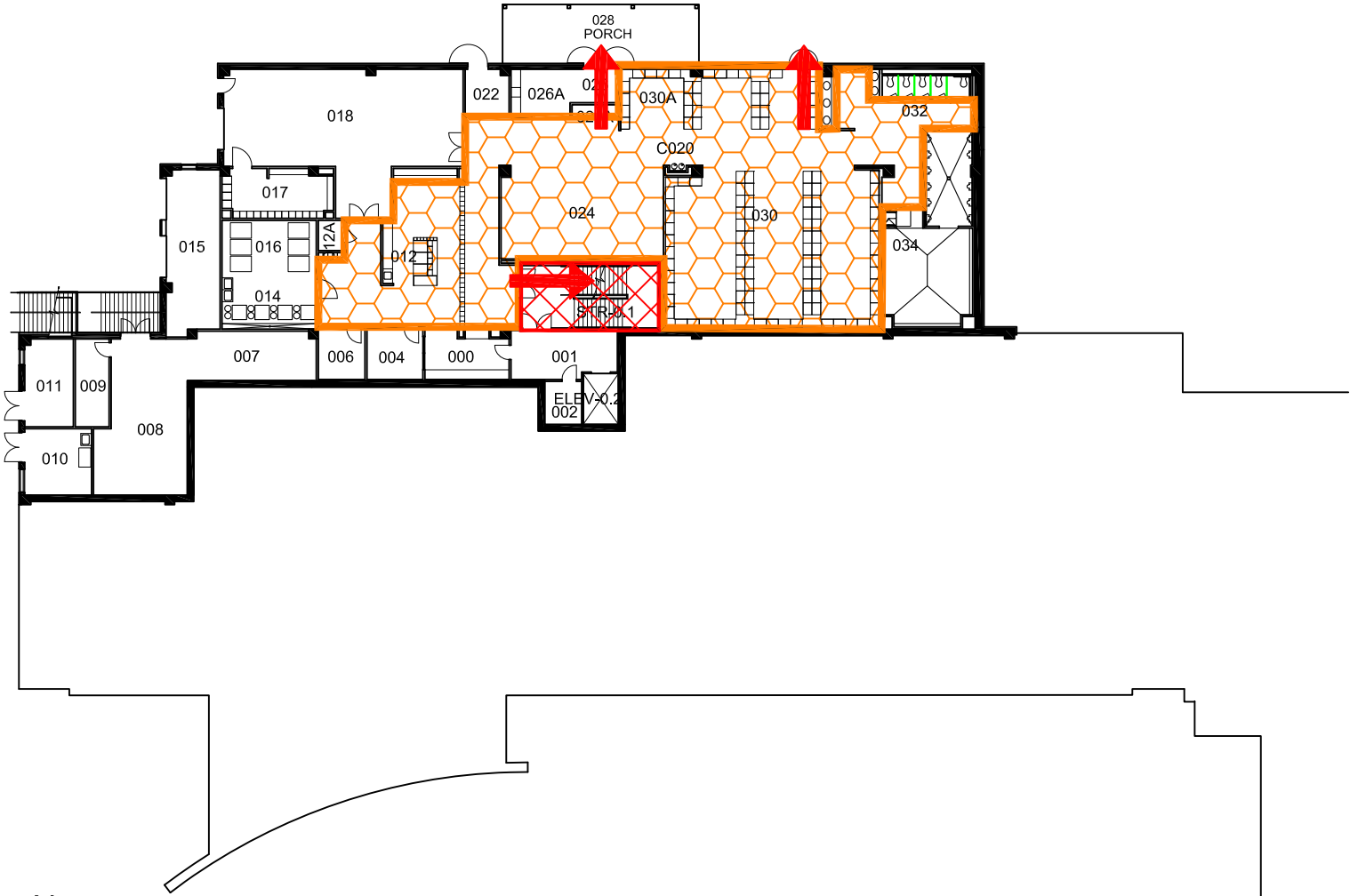
 CHAIR Evacuation Chair

# ATHLETIC CENTER

## BLDG #0320

### 08-2005

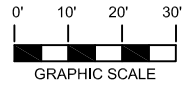
Exterior Gross Area  
11938








N



## BASEMENT FLOOR PLAN



Safety Legend

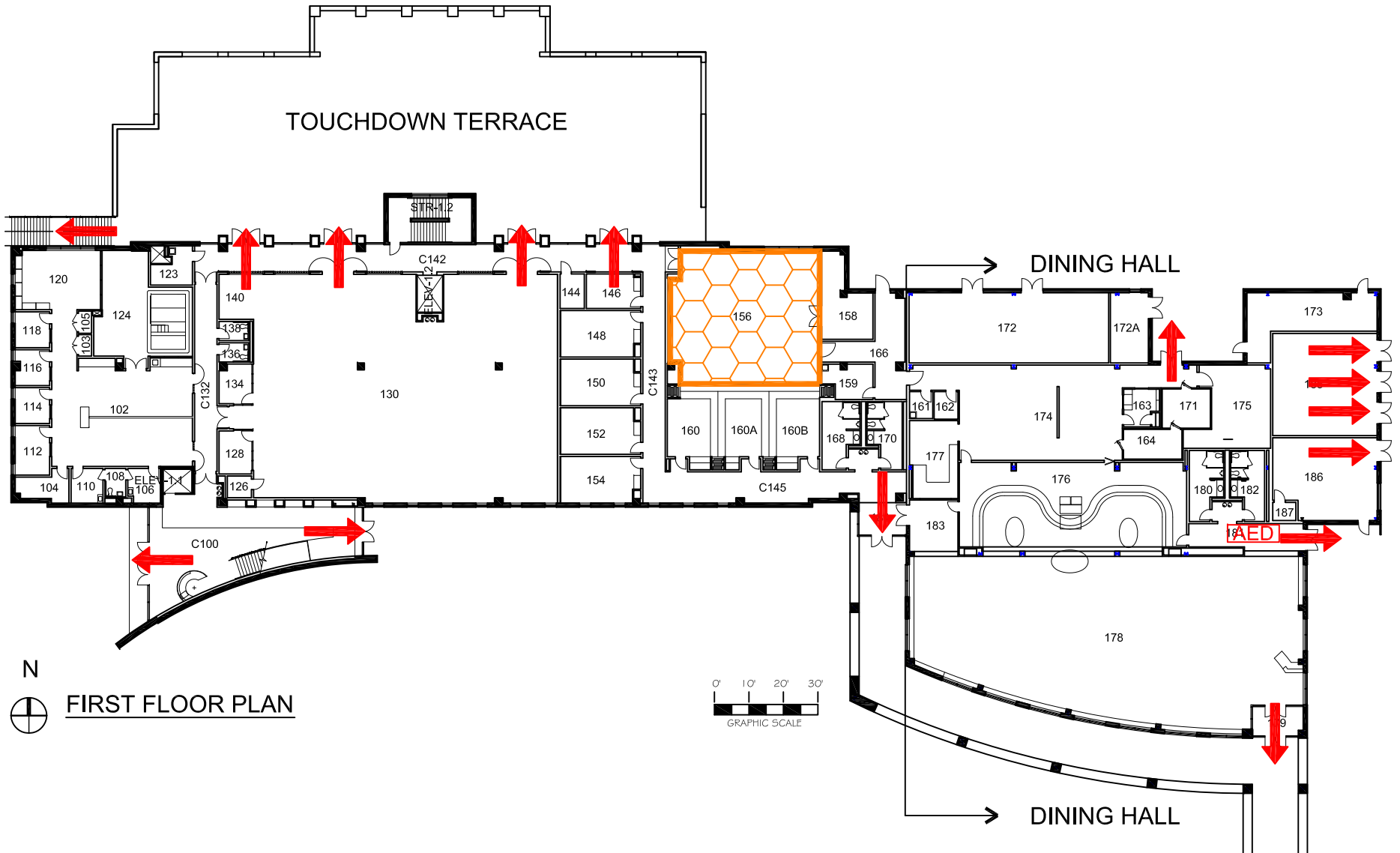
-  Areas of Refuge
-  Tornado Shelter Areas
-  Exit/Evacuation Routes
- In case of fire, do not use elevator*
-  AED Automatic External Defibrillator
-  CHAIR Evacuation Chair

# ATHLETIC CENTER

BLDG #0320

10-2009

Exterior Gross Area  
36911



N  
FIRST FLOOR PLAN

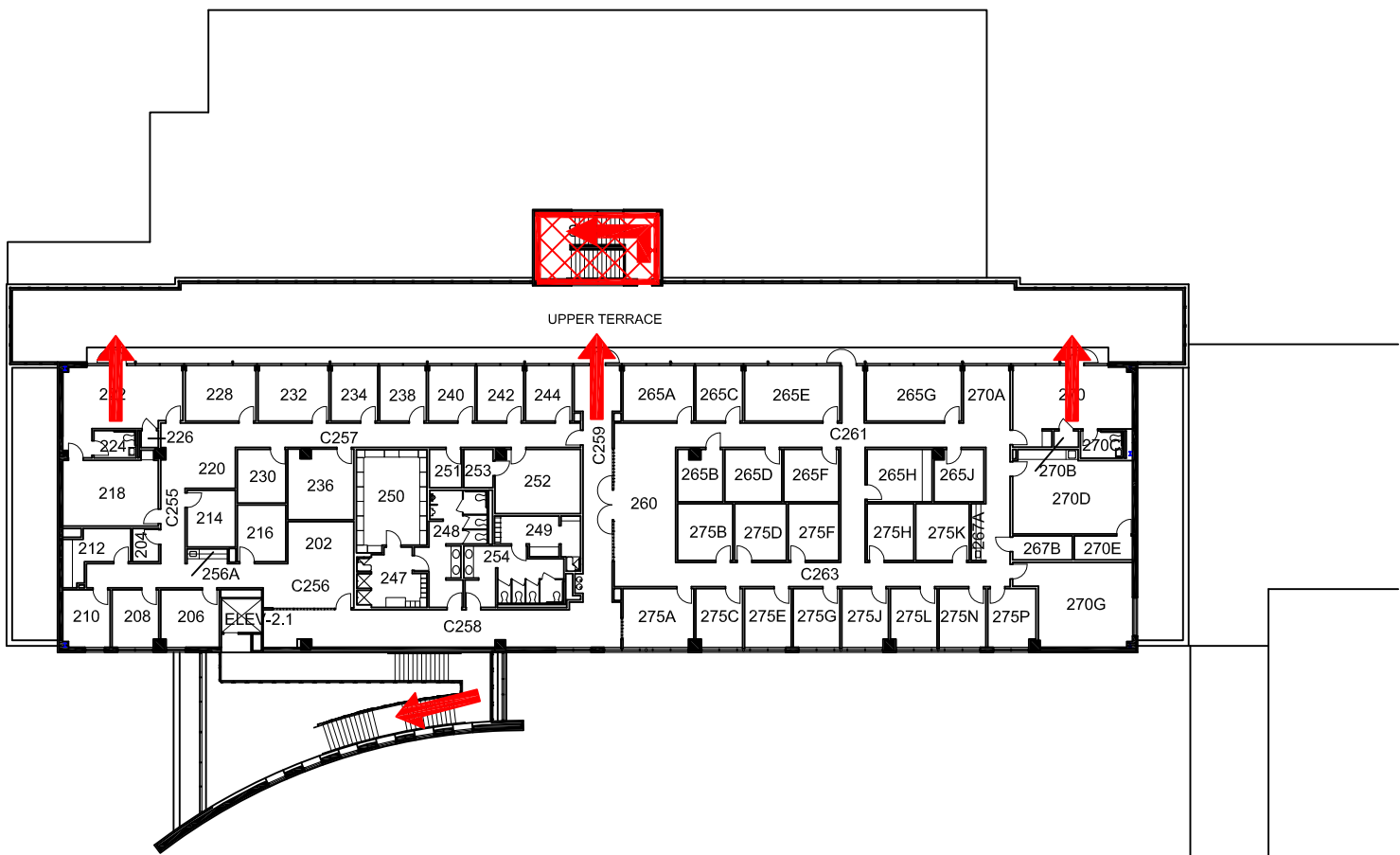
0' 10' 20' 30'  
GRAPHIC SCALE

# ATHLETIC CENTER

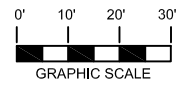
## BLDG #0320






### 08-2005

Exterior Gross Area  
13611



N  
SECOND FLOOR PLAN



- Safety Legend**
-  Areas of Refuge
  -  Tornado Shelter Areas
  -  Exit/Evacuation Routes  
*In case of fire, do not use elevator*
  -  AED Automatic External Defibrillator
  -  CHAIR Evacuation Chair