

Emergency Evacuation Procedures

Administration Building

Severe Weather

In the event of severe weather, all building occupants should immediately seek shelter in the designated shelter-in-place area in the building. If unable to safely move to the designated shelter-in-place area, seek shelter in a windowless interior room or hallway on the lowest floor of the building.

All building occupants should take shelter in office suite 135 A-F, and beside the center staircase in the center of the building.

Bomb Threat/Fire

In the event of a bomb threat or fire in the building, all building occupants should immediately evacuate the building using the nearest exit. Once outside, proceed to the designated assembly area. If unable to safely move to the designated assembly area, contact one or more members of your department or unit to let them know you are safe and inform them of your whereabouts.

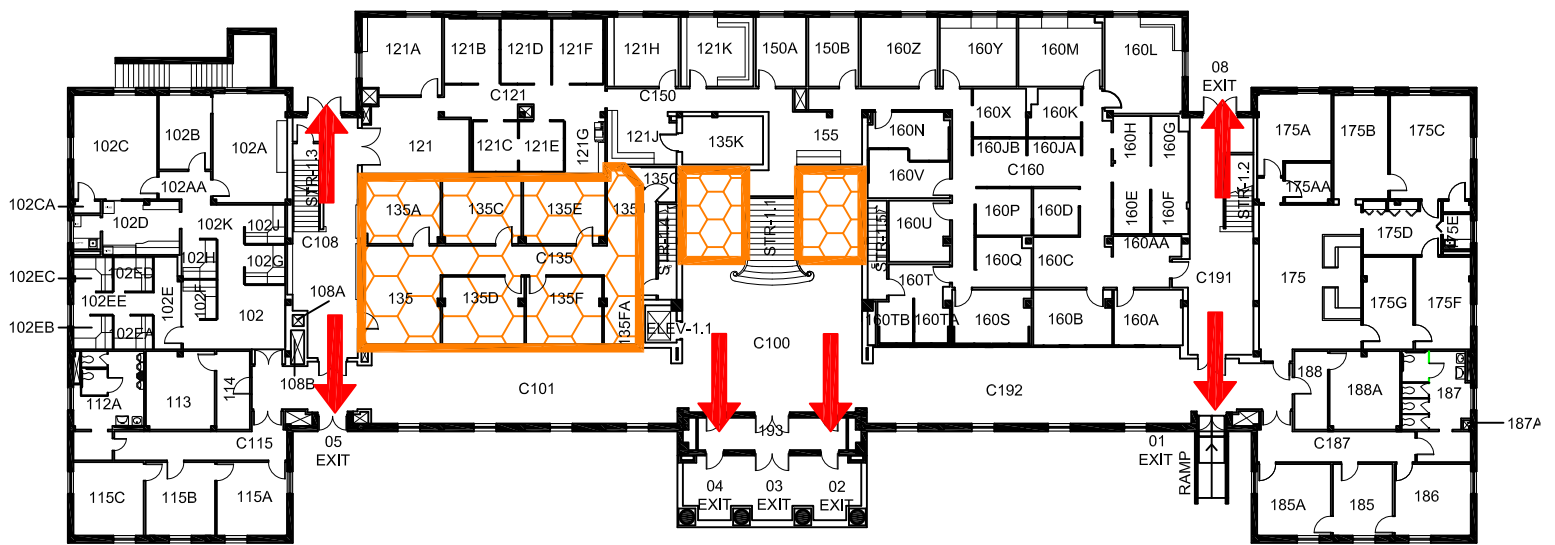
Persons with mobility impairments who are unable to safely exit the building should move to a designated area of refuge and await assistance from emergency responders.

All building occupants should immediately evacuate the building and proceed to the walking path, west of parking lot 1.

HURLEY ADMINISTRATION BUILDING

BLDG #0101
05-2012


Exterior Gross Area
19253





FIRST FLOOR PLAN




Safety Legend


 Areas of Refuge

 Tornado Shelter Areas

 Exit/Evacuation Routes

In case of fire, do not use elevator

 Automatic External Defibrillator

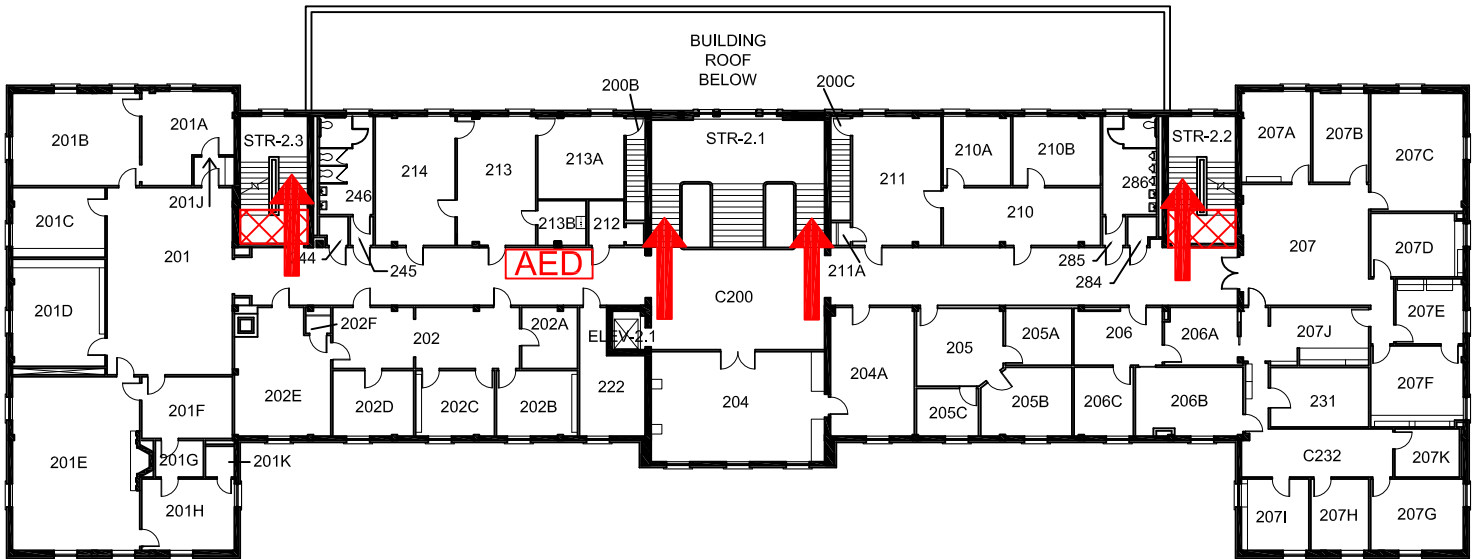
 Evacuation Chair

HURLEY ADMINISTRATION BUILDING

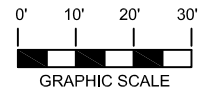
BLDG #0101

06-2011






Exterior Gross Area
16596



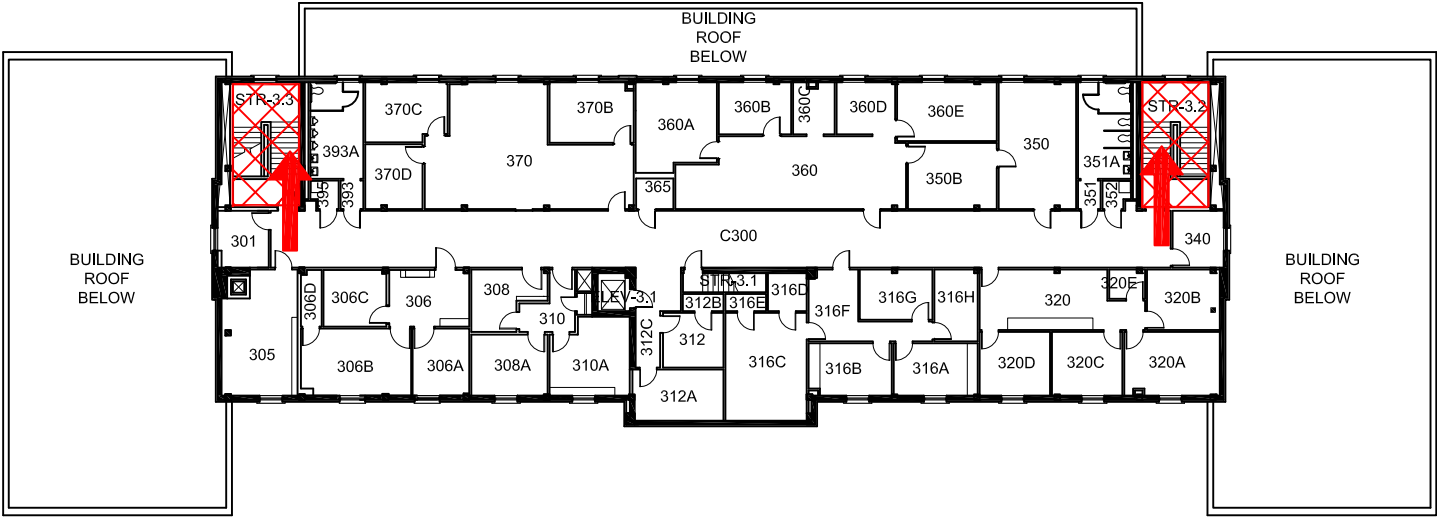
SECOND FLOOR PLAN



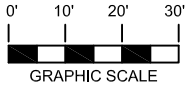
Safety Legend

-  Areas of Refuge
-  Tornado Shelter Areas
-  Exit/Evacuation Routes
- In case of fire, do not use elevator*
-  Automatic External Defibrillator
-  Evacuation Chair



Hurley Administration Building






THIRD FLOOR PLAN



Safety Legend

-  Areas of Refuge
-  Tornado Shelter Areas

 Exit/Evacuation Routes
In case of fire, do not use elevator

-  Automatic External Defibrillator
-  Evacuation Chair