



Louisiana Marine Debris Emergency Response Guide: Field Reference Guide

NOAA Marine Debris Program
National Oceanic and Atmospheric Administration
U.S. Department of Commerce
March 2018

Table of Contents

1. Introduction	2
1.1. Purpose	2
1.2. Scope of <i>Guide</i>	2
2. Louisiana Waterway Debris Response Flowchart	3
3. Organization Jurisdictions and Capabilities	5
3.1. Louisiana Waterway Debris Response Map	5
3.2. Response Capabilities	7
4. Permitting and Compliance Requirements in Louisiana	9
5. Contact Information	11

1. Introduction

1.1 Purpose

This *Field Reference Guide* condenses information contained in the *Louisiana Marine Debris Emergency Response Guide: Comprehensive Guidance Document (Guide)* to facilitate use during emergency response operations. While the *Comprehensive Guidance Document* serves as a complete reference for incident waterway debris response in Louisiana, the *Field Reference Guide* includes the most pertinent information for quick reference in the field and during times of crisis. Both documents and subsequent versions will be posted on NOAA’s Marine Debris Program website at <https://marinedebris.noaa.gov/>.

The purpose of these documents is to improve preparedness for response and recovery operations following an acute waterway debris incident in coastal Louisiana. The term acute waterway debris incident is used to describe an incident – either natural or anthropogenic – that results in the release of large amounts of waterway debris. The *Comprehensive Guidance Document* and complementary *Field Reference Guide* outline existing response structures at the local, state, and federal levels to facilitate a coordinated, well-managed, and immediate response to potential waterway debris incidents impacting the state of Louisiana. Organization roles and responsibilities are presented in a consolidated one-page flowchart which functions as a decision tree for waterway debris response. Additionally, permitting and compliance requirements for waterway debris removal have been synthesized in a one-page reference handout.

1.2 Scope of *Guide*

The *Comprehensive Guidance Document* and *Field Reference Guide* address potential acute waterway debris incidents affecting Louisiana’s coastal areas with a focus on the 20 parishes within the Louisiana Coastal Zone boundary. Throughout this document, the term waterway debris (or incident waterway debris) is used in lieu of the term marine debris. In 33 U.S.C. § 1956(3), marine debris is defined as any persistent solid material that is manufactured or processed and directly or indirectly, intentionally or unintentionally, disposed of or abandoned into the marine environment

or Great Lakes. Although vegetative debris is not included in the legal definition for marine debris, stakeholders have identified it as a common debris stream of concern following natural disasters. To account for both marine debris and vegetative debris in this document, the term waterway debris is used to describe any solid material, including but not limited to vegetative debris and debris exposed to or that has the potential to release oil, hazardous substances, pollutants or contaminants, that enters a waterway following an acute incident and poses a threat to the natural or man-made environment. This may include shoreline and wetland debris and debris in some inland, non-tidal waterways.

2. Louisiana Waterway Debris Response Flowchart

The “Louisiana Waterway Debris Response Flowchart” provides a visual one-page representation of organization roles and responsibilities. The flowchart functions as a decision tree for waterway debris response with color-coded endpoints. Yellow endpoints represent response to waterway debris that is exposed to or has the potential to release oil, hazardous substances, pollutants, or contaminants. Blue endpoints represent response to waterway debris that is not exposed to and does not have the potential to release oil, hazardous substances, pollutants, or contaminants. Endpoints within the green shaded area indicate that response may occur under Robert T. Stafford Disaster Relief and Emergency Assistance Act (Stafford Act) authorities and/or funding.

The intent of the flowchart is to outline the most likely response structure with the understanding that flexibility is an inherent component of an effective response.

Louisiana Waterway Debris Response Flowchart

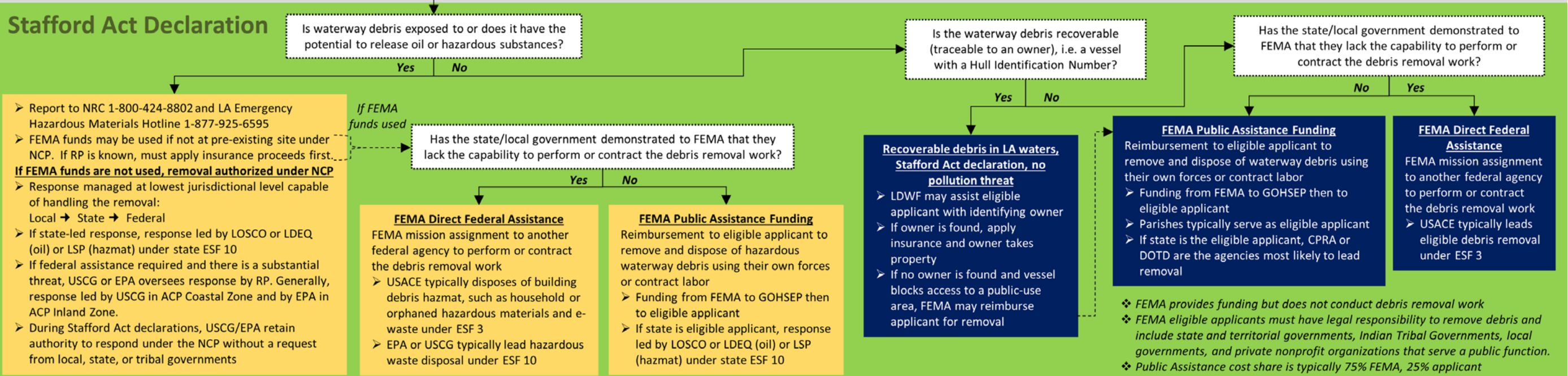
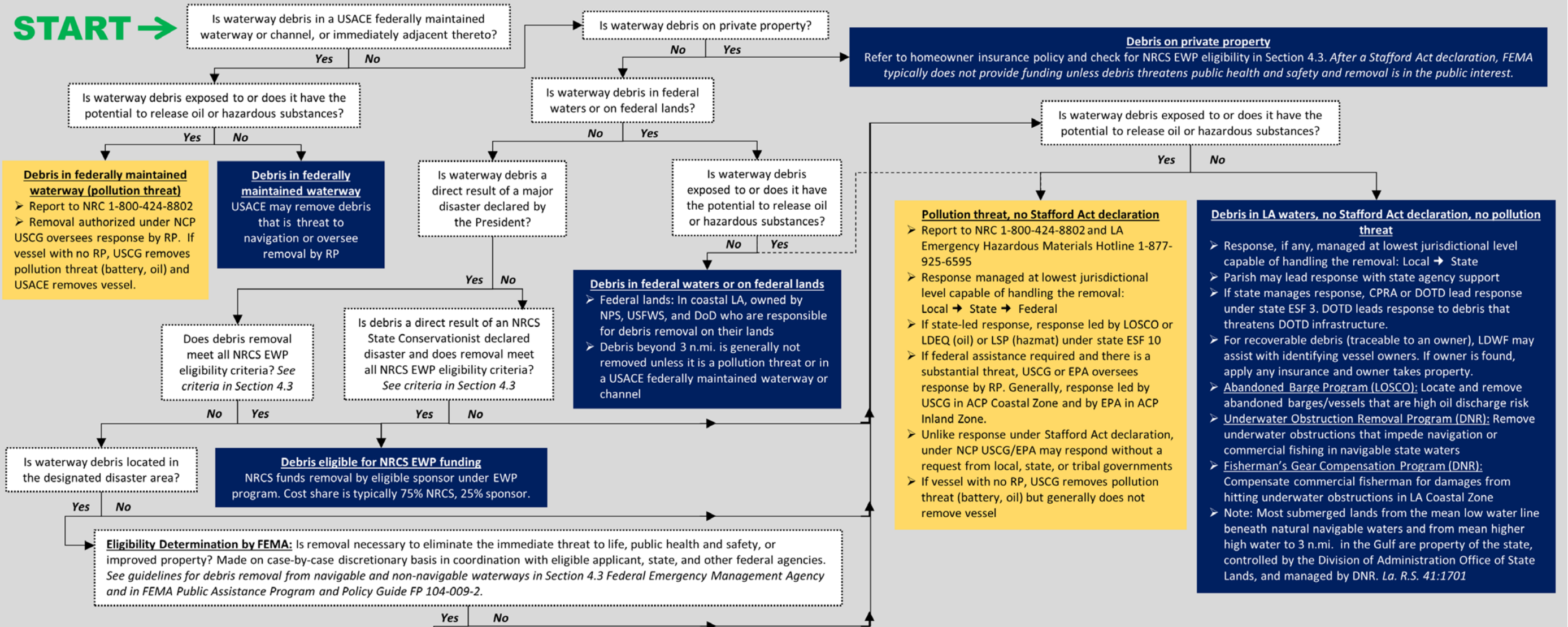
Waterway Debris/Incident Waterway Debris
Any solid material, including but not limited to vegetative debris and debris exposed to or that has the potential to release oil, hazardous substances, pollutants, or contaminants, that enters a waterway following an acute incident and poses a threat to the natural or man-made environment. This may include shoreline and wetland debris and debris in some inland, non-tidal waterways.

Acronyms
ACP – Area Contingency Plan
CPRA – Coastal Protection and Restoration Authority
DNR – LA Department of Natural Resources
DoD – Department of Defense
DOTD – LA Department of Transportation and Development
EPA – U.S. Environmental Protection Agency
ESF – Emergency Support Function
EWP – Emergency Watershed Protection

FEMA – Federal Emergency Management Agency
GOHSEP – Governor’s Office of Homeland Security and Emergency Preparedness
LDEQ – LA Department of Environmental Quality
LDWF – LA Department of Wildlife and Fisheries
LOSCO – LA Oil Spill Coordinator’s Office
LSP – LA State Police
NCP – National Oil and Hazardous Substances Contingency Plan

NPS – National Park Service
NRC – National Response Center
NRCS – Natural Resources Conservation Service
RP – Responsible Party (Owner, Operator, Lessee)
USACE – U.S. Army Corps of Engineers
USCG – U.S. Coast Guard
USFWS – U.S. Fish and Wildlife Service

Flowchart Key	Response to waterway debris that is exposed to or has the potential to release oil, hazardous substances, pollutants, or contaminants
	Response to waterway debris that is not exposed to and does not have the potential to release oil, hazardous substances, pollutants, or contaminants
	Indicates response may occur under Stafford Act authorities and/or funds

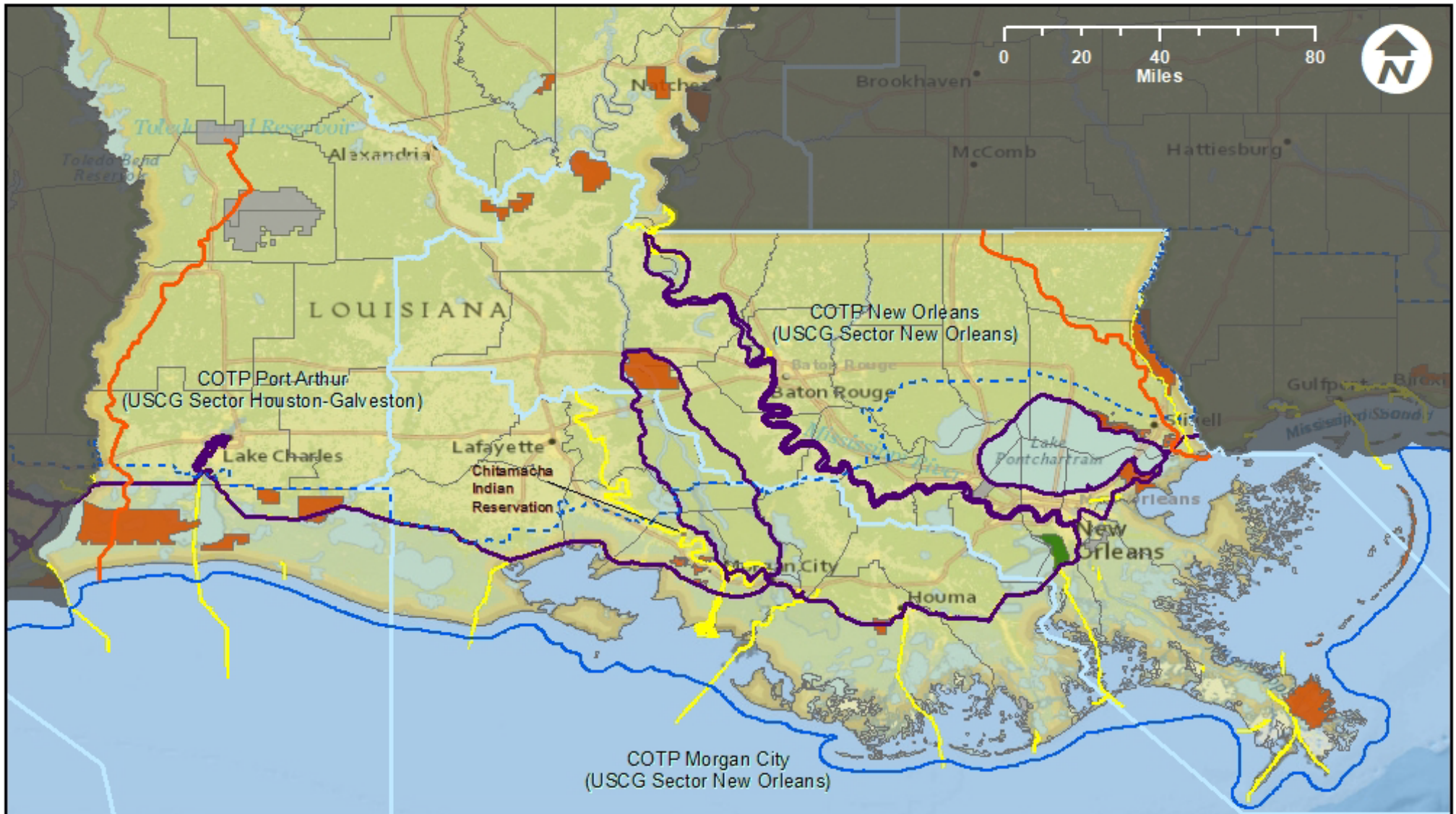


3. Organization Jurisdictions and Capabilities

3.1 Louisiana Waterway Debris Response Map

The “Louisiana Waterway Debris Response Map” displays relevant agency jurisdiction boundaries in Louisiana’s Coastal Zone. After an acute waterway debris incident, the agency (or agencies) with jurisdiction and authority for removing debris will vary depending on where the debris is located. This map includes information that stakeholders identified as important in determining jurisdiction within the state.

Louisiana Waterway Debris Response Map



Legend

USA Federal Lands

Federal Managing Group

- National Parks Service
- Fish and Wildlife Service
- Bureau of Indian Affairs
- Department of Defense

- State Seaward Boundary
- Coastal Zone Management Act Boundary
- Federally Maintained Waterway/Channel (U.S. Army Corps of Engineers, USACE)
- USACE Galveston-New Orleans-Vicksburg Civil Works Boundaries

- U.S. Coast Guard (USCG) Captain of the Port (COTP) Zones
- U.S. Coast Guard-EPA Coastal-Inland Zone Boundary for oil or hazardous substance response
- Louisiana Parishes

3.2 Response Capabilities

Yes - Verified In-house Capability		Lafourche Parish	Tangipahoa Parish	Terrebonne Parish OHSEP	Sewerage and Water Board of New Orleans	CPRA ¹	CRT, SHPO	DNR, OCM ²	DOA, Office of State Lands	LDWF	FEMA Region 6 ⁵	NOAA	NPS ⁹	NRCS	USACE, New Orleans District ¹¹		USFWS, Ecological Services Program	
Contract (Contr.) - Contracted capability															Y	C		
Technology	Aerial photography and video	Yes	Yes	-	-	-	-	-	-	-	-	Yes	-	-	Y	C	-	
	Remote sensing (LIDAR)	-	-	-	-	-	-	-	-	-	-	Yes	-	-	Contract		-	
	Sub-Surface Detection: Side scan, Single-beam, or Multi-beam sonar	Yes	Yes	-	-	Contract	-	-	-	Yes	-	Yes	-	-	Yes		-	
Equipment	Aircraft	-	-	-	-	-	-	-	-	Yes	-	Yes	-	-	-		-	
	Heavy equipment: Barge, Self-loading barge, Crane, Knuckleboom Crane, Environmental clamshell dredge, Excavator	-	-	-	Contract	-	-	-	-	-	-	-	-	-	Yes		-	
	Remotely Operated Vehicle (ROV)	-	-	-	-	-	-	-	-	-	-	Yes	-	-	-		-	
	Unmanned Aerial Vehicle (UAV)/Surveillance drones with FAA trained operator	Yes	Yes	-	-	-	-	-	-	-	-	Yes	-	-	Yes		-	
	Vessels	-	Yes	-	Yes	Yes	-	-	Yes	Yes	-	Yes	Yes	Yes	Yes		-	
Workforce/Expertise	Debris modeling expertise (volume, transport, hindcasting, etc.)	Contract	Contract	-	-	-	-	-	-	-	-	Yes	-	-	-		-	
	Dedicated waterway/marine debris staff (responders, response team, regional coordination, etc.)	-	Contract	-	-	Contract	-	-	-	-	-	Yes	-	-	-		-	
	Dive support (scientific, technical, commercial, etc.)	-	-	-	-	Contract	-	-	-	-	-	Yes	-	-	Contract		-	
	Environmental or cultural resource expertise (location of sensitive areas, endangered species present, etc.)	-	Yes	-	Yes	Yes	Yes	Yes	-	Yes	Yes	Yes ⁷	Yes	-	Yes		Yes	
	Geographic Information System (GIS) mapping and plotting of imagery	Yes	Yes	Yes	Yes	Contract	Yes	Yes	-	-	Yes	Yes	Yes	Yes	Yes	Y	C	-
	Incident Command System (ICS) trained staff	Yes	Yes	Yes	Yes	Yes	-	-	-	Yes	Yes	Yes	Yes	Yes	Yes	Yes		-
	Legal assistance	Yes	Yes	-	Yes	Yes	-	-	-	Yes	-	-	-	-	Yes		-	
	Public outreach processes in place	Yes	Yes	Yes	Yes	Yes	-	-	-	Yes	-	-	Yes	Yes	Yes		-	
Logistics	Technical expertise for removal operations (techniques, best management practices, etc.)	Contract	Contract	-	Yes	Contract	Yes	-	-	-	Yes	Yes	-	Yes	-		-	
	Volunteer manpower/Volunteer coordination	-	Yes	Yes	-	-	-	-	Yes	-	-	-	Yes	-	-		-	
	Contracting: Pre-approved waterway debris removal contractors	Contract	Contract	-	-	-	-	-	-	Yes	-	-	-	-	-		-	
	Contracting: Pre-event contracts and staged agreements in place	Contract	Contract	-	-	-	-	-	-	-	-	-	-	-	-		-	
	Docks for wet storage of vessels	-	Yes	-	-	-	-	-	-	-	-	-	-	-	-		-	

Yes - In-house Capability		Lafourche Parish	Tangipahoa Parish	Terrebonne Parish OHSEP	Sewerage and Water Board of New Orleans	CPRA ¹	CRT, SHPO	DNR, OCM ²	DOA, Office of State Lands	LDWF	FEMA Region 6 ⁵	NOAA	NPS ⁹	NRCS	USACE, New Orleans District ¹¹	USFWS, Ecological Services Program
Contract - Contracted capability																
Logistics	Funding for waterway debris removal	-	-	-	-	-	-	- ³	-	-	Yes ⁶	Yes ⁸	-	Yes ¹⁰	Yes	-
	Process or team in place to identify responsible parties (for debris that can be traced to an owner)	Yes	-	-	-	-	-	Yes ⁴	-	-	-	-	-	-	Yes	-
	Staging/Off-Loading: Land with water access to stage, offload debris (has not been evaluated for suitability or officially pre-designated)	-	Yes	Yes	-	-	-	-	-	Yes	-	-	Yes	-	Yes	-
	Staging/Off-Loading: Pre-designated (pre-approved) staging, off-loading and special handling areas (already evaluated for suitability)	Contract	Yes	-	-	-	-	-	-	-	-	-	Yes	-	-	-

Note: Capabilities which could be used during waterway debris response in Louisiana were either identified through research or were self-reported by an organization. Organizations were asked to indicate whether capabilities were in-house or were contracted through a third party. Footnotes refer to additional information provided for a particular capability.

- ¹CPRA For capabilities that are not in-house, CPRA could potentially contract for them as part of ESF 3 support to the state's response.
- ²DNR Potentially has permitting authority over all marine debris removal activities occurring in the LA Coastal Zone.
- ³DNR Office of Conservation manages the Underwater Removal Obstruction Fund.
- ⁴DNR For debris related to an Office of Coastal Management permitted activity in the LA Coastal Zone, may be able to identify an obstruction using database of permitted projects, which includes flowlines/pipelines and other activities.
- ⁵FEMA Capabilities contingent upon a Presidential major disaster declaration. FEMA capable of mission-assigning other federal support to increase capabilities.
- ⁶FEMA May provide reimbursement public assistance funding for eligible debris removal during Presidential major disaster declarations when another federal agency does not have authority to fund the activity.
- ⁷NOAA Coordinates marine mammal and sea turtle stranding response and reviews proposed debris removal activities for compliance with ESA and Magnuson-Stevens Fisheries Conservation and Management Act.
- ⁸NOAA Funding through grant program and possible Congressional supplemental funding.
- ⁹NPS Capabilities are subject to support from park management.
- ¹⁰NRCS When funding is available, provides emergency financial and technical assistance through the EWP program eligible projects.
- ¹¹USACE Other USACE districts may have additional capabilities. Funding, when available, for federal projects only.

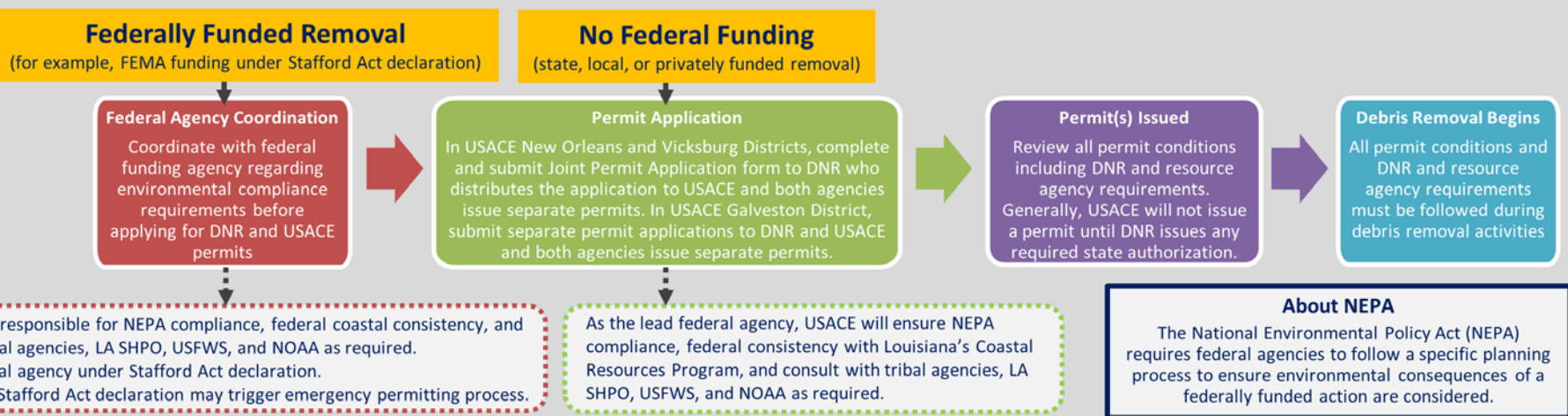
4. Permitting and Compliance Requirements in Louisiana

The “Permitting and Compliance for Waterway Debris Removal in Louisiana” handout on the following page synthesizes permitting and compliance requirements that must be met before waterway debris removal operations begin. The top portion of the one-pager outlines the process to follow to stay in compliance, while the bottom portion highlights specific state and federal agency requirements with general contact information.

Permitting and Compliance for Waterway Debris Removal in Louisiana

- In Louisiana's Coastal Zone, a LA Department of Natural Resources (DNR) Coastal Use Permit and/or U.S. Army Corps of Engineers (USACE) permit may be required if debris removal involves dredging, the discharge of dredged or fill material, or involves structures or work impacting those waters or wetlands.
- DNR and USACE New Orleans and Vicksburg Districts have a joint permit application process. Applications in Galveston District must be submitted to USACE and DNR separately.
- The **lead federal agency** is responsible for compliance with National Environmental Policy Act (NEPA), federal coastal consistency, and consulting with tribal and resource agencies including Louisiana State Historic Preservation Office (SHPO), U.S. Fish and Wildlife Service (USFWS), and the National Oceanic and Atmospheric Administration (NOAA) as required.

Compliance process when permit is required



Agency Requirements and Contact Numbers

LA Department of Natural Resources (DNR)

Office of Coastal Management
800-267-4019

- Serves as the initial agency to submit a permit application in Louisiana's Coastal Zone (for USACE New Orleans and Vicksburg Districts). In a parish with an approved Local Coastal Management Program, may submit to either the parish or to DNR.
- Coastal Use Permit may be required if the activity involves dredging, the discharge of dredge or fill material, or involves structures or work impacting the navigability of a waterway
- DNR forwards permit application to appropriate agencies including USACE Regulatory Office (in New Orleans and Vicksburg Districts) if required

U.S. Army Corps of Engineers (USACE)

Regulatory Offices
New Orleans District
504-862-2255

Vicksburg District
601-631-7071
Galveston District
409-766-3869

- In LA Coastal Zone, USACE New Orleans and Vicksburg Districts and DNR have a joint permit application process
- Some permits that may be required for debris removal in waterways and wetlands
 - **NWP-3 Maintenance** for removal/maintenance of culverts, sediments or debris accumulated around outfalls, bridges, etc.
 - **NWP-18 Minor Discharges** of dredge or fill material
 - **NWP-19 Minor Dredging** of no more than 25 cubic yards
 - **NWP-22 Removal of Vessels** for removal of wrecked, abandoned, or disabled vessels or other man-made obstructions to navigation
- Other USACE offices may review permit applications, such as when activities intersect with federally maintained waterways, including levee systems

LA Department of Environmental Quality (LDEQ)

Waste Permits Division
225-219-3070
Water Permits Division
225-219-3225

- Conducts water quality certifications and reviews federal permit applications for impacts to wetlands, streams, and open waters
- Provides emergency debris removal, management, and disposal guidance
- Pre-approves emergency disaster debris sites and authorizes the siting and operation of temporary emergency debris management sites

LA Department of Culture, Recreation and Tourism

LA State Historic Preservation Office (SHPO)
225-342-8200

- Serves as the State Historic Preservation Office and ensures compliance with National Historic Preservation Act
- Consultation with LA SHPO required if waterway debris response involves federal permits and/or funding (USACE permit, FEMA funding, etc.) to evaluate whether activities affect historic or cultural sites included in or eligible for the National Register of Historic Places
- Reviews proposed federally funded or permitted debris removal activities for impacts to archaeological properties, above-ground structures, and cultural resources

National Oceanic and Atmospheric Administration (NOAA)

National Marine Fisheries Service (NMFS)
ESA: 727-824-5312
EFH: 225-389-0508

- Consultation required if waterway debris response involves federal permits and/or funding (USACE permit, FEMA funding, etc.) to comply with:
 - Endangered Species Act (ESA) to ensure actions do not jeopardize the continued existence of any listed endangered or threatened marine species or adversely modify designated critical habitat
 - Magnuson-Stevens Fisheries Conservation and Management Act to ensure actions do not adversely affect Essential Fish Habitat (EFH)

U.S. Fish and Wildlife Service (USFWS)

LA Ecological Services Field Office
337-291-3100

- Consultation required if waterway debris response involves federal permits and/or funding (USACE permit, FEMA funding, etc.) to comply with:
 - Endangered Species Act (ESA) to ensure actions do not adversely modify designated critical habitat or jeopardize the continued existence of any listed endangered or threatened land or freshwater species and certain marine species such as manatee
 - Coastal Barrier Resources Act to ensure actions do not encourage development on coastal barriers along Louisiana's coast

5. Contact Information

Non-Governmental Organizations

Organization	Division	Topic	Point of Contact	Phone	Email
Barataria-Terrebonne National Estuary Program	-	Planning and coordination	Susan Testroet-Bergeron, Director	985-447-0868	susan@btnep.org

Local Agencies

Note: Contact information is only included for those local organizations who have provided and/or approved information in the following table. A complete list of parish OHSEP points of contact can be found at the web address in the first entry.

Agency	Division	Topic	Point of Contact	Phone	Email
Parish Office of Homeland Security and Emergency Preparedness (OHSEP)	-	-	See http://gohsep.la.gov/ABOUT/PARISHPA for a complete list of parish contacts	-	-
Cameron Parish OHSEP	-	Planning and coordination	Danny Lavergne, Director	337-775-7048	cameron_oep@camtel.net
Lafourche Parish	-	Capability contact (equipment, technological)	Chris Boudreaux	985-537-7603	chrisb@lafourchegov.org
		Capability contact (logistics, workforce)	Jerome Danos	985-537-7603	-
		Capability contact (technological, workforce)	Jeff Leuenberger	-	leuenbergerjl@lafourchegov.org
Sewerage and Water Board of New Orleans	Communication	Capability contact (public outreach)	Lisa Martin	504-655-1358	lmartin@swbno.org
	Emergency Management	Capability contact (ICS trained staff)	Jason Higginbotham	504-218-3235	jhigginbotham@swbno.org
	Engineering	Capability contact (technical expertise for removal operations)	Ron Spooner	504-433-3888	rspooner@swbno.org
	Environmental Affairs	Capability contact (environmental or cultural resource expertise)	Ann Wilson	504-252-9707	awilson@swbno.org
	Information System GIS Team	Capability contact (GIS)	Melinda Nelson	504-218-3612	mnelson@swbno.org
	Legal	Capability contact (legal assistance)	Yolanda Grinstead	504-270-7556	ygrinstead@swbno.org
	-	Capability contact (vessels, air boat)	Randy Catchot	504-812-7687	rcatchot@swbno.org
St. Mary Parish	-	Planning and coordination	Duval Arthur, Emergency Preparedness Coordinator	337-828-4100 x 135	darthur@stmaryparishla.gov
Tangipahoa Parish OHSEP	-	Capability contact	Dawson Primes LEM	985-974-7977	-
		Capability contact (sonar)	CPT Robert Bel	985-507-4870	-
		Capability contact (drone)	Chief Bruce Cutrer	985-969-6040	-
Terrebonne Parish OHSEP	-	Capability contact	Earl Eues	985-873-6357	-

State Agencies

Agency	Division	Topic	Point of Contact	Phone	Email
Governor's Office of Homeland Security and Emergency Preparedness (GOHSEP)	Public Assistance	Planning and coordination	Lynne Browning, Assistant Deputy Director	225-338-7342	lynne.browning@la.gov
			Daniel Crothers, Group Lead	225-267-2761	daniel.crother@la.gov
			John Gonzales, Section Chief, Public Assistance Technical Services	225-573-0473	john.gonzales@la.gov
			James Richard, Resolution Officer	225-315-7227	James.Richard2@la.gov
	Regional Coordination	Region 1	Darryl Delatte	-	darryl.delatte@la.gov
		Region 2	Darren Guidry	225-916-4905	darren.guidry@la.gov
		Region 4	Lee John III	-	lee.johnIII@la.gov
		Region 3	Pam Roussel	225-439-2047	pam.roussel@la.gov
		Region 5	Doug Zettlemoyer	-	doug.zettlemoyer@la.gov
Training and Exercise Branch	Exercises	Michael Zaruba, Exercise Officer	225-284-6570	michael.zaruba@la.gov	
Disaster Recovery Legal Services	Legal	Danielle Aymond, Executive Counsel	225-925-7541	danielle.aymond@la.gov	
LA Coastal Protection and Restoration Authority (CPRA)	-	Planning and coordination	Sam Martin, Executive Management Officer	225-252-9913	sam.martin@la.gov
	-	Capability contact (vessels)	Glen Ledet	-	glen.ledet@la.gov
LA Department of Culture, Recreation and Tourism (CRT)	-	-	Lt. Governor Billy Nungesser	225-342-7009	ltgov@crt.la.gov
	LA State Historic Preservation Office (SHPO, Office of Cultural Development)	National Historic Preservation Act compliance, capability contact	-	225-342-8200	section106@crt.la.gov
			Chip McGimsey, LA State Archeologist	225-219-4598 (O) 225-454-9274 (C)	cmcgimsey@crt.la.gov
		Capability contact (GIS)	Rachel Watson	225-342-8165	rwatson@crt.la.gov
	Office of State Parks	Response in state parks	Ray Berthelot	-	rberthelot@crt.la.gov
LA Department of Environmental Quality (LDEQ)	Office of Environmental Compliance, Emergency and Radiological Services	Report oiled or hazardous substances to LDEQ	24 Hour Emergency Response Hotline	225-342-1234	-
		Planning and Coordination	Jeff Dausat, Senior Environmental Scientist	504-736-7714	jeff.dausat@la.gov
	Office of Environmental Services, Waste Permits Division	Debris management and disposal	-	225-219-3070	-
			Mike Hahn, Senior Environmental Scientist	225-219-3464	mike.hahn@la.gov
			Karla Vidrine, Staff Environmental Scientist	225-219-3047	karla.vidrine@la.gov
Office of Environmental Services, Water Permits Division	Water Quality Certification	Elizabeth Hill	225-219-3225	elizabeth.hill@la.gov	
LA Department of Natural Resources (DNR)	Office of Coastal Management	Fisherman's Gear Compensation Program	Jessica Diez, Coastal Resources Scientist	225-342-7268	jessica.diez@la.gov
	Office of Coastal Management, Permits and Mitigation Division	Coastal Use Permitting	-	800-267-4019	-
			Christine Charrier, Coastal Resources Manager	225-342-7953	christine.charrier@la.gov
		Capability contact	Karl Morgan, Administrator	225-342-6470	karl.morgan@la.gov
Office of Conservation	Underwater Obstruction Removal Program	Matt Simon	225-342-6089	matt.simon@la.gov	

State Agencies Continued

Agency	Division	Topic	Point of Contact	Phone	Email
LA Department of Public Safety and Corrections (DPS)	LA State Police (LSP)	Report emergency incidents, including oiled or hazardous substances	LA Emergency Hazardous Materials Hotline	877-925-6595	-
LA Department of Transportation and Development (DOTD)	-	ESF 3 Public Works and Engineering lead	Mark Benton	225-806-4273	mark.benton3@la.gov
		-	Skip Breeden, Director Emergency Operations	-	skip.breeden@la.gov
LA Department of Wildlife and Fisheries (LDWF)	Office of Fisheries	Capability contact	Jeff Marx, Biologist	225-765-2917	jmarx@wlf.la.gov
		Planning and Coordination	Ty Lindsey	225-765-2387 x 1344	tlindsey@wlf.la.gov
	Office of Wildlife	Planning and Coordination	Todd Baker	225-765-2814	tbaker@wlf.la.gov
LA Division of Administration (DOA)	Office of State Lands, Land and Waterbottom Management Section	Identification and management of state public lands and water bottoms	Les Rosso, Section Manager	225-342-4600	les.rosso@la.gov
	Office of State Lands	Capability contact	Cheston Hill, Public Lands Utilization Manager	225-219-9454	cheston.hill@la.gov
LA Sea Grant	Law and Policy Program	Planning and Coordination	Melissa Daigle, Research Associate	225-578-9968	mtrosc2@lsu.edu
			Niki Pace, Sustainability Coordinator	225-578-6342	nlp@lsu.edu

Federal Agencies

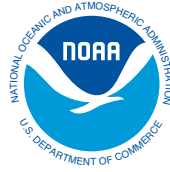
Agency	Division	Topic	Point of Contact	Phone	Email
Bureau of Safety and Environmental Enforcement	Marine Trash and Debris Program	Planning and coordination	James Sinclair, Marine Ecologist	504-736-2789	james.sinclair@bsee.gov
Federal Emergency Management Agency (FEMA)	Region 6	Funding following Presidential disaster declaration	Contact parish OHSEP. See http://gohsep.la.gov/ABOUT/PARISHPA for a complete list of contacts.	-	-
		Environmental and Historic Preservation	Kevin Jaynes, Regional Environmental Officer	940-383-7224	kevin.jaynes@fema.dhs.gov
		Public Assistance	William "Bill" Boone, Public Assistance Branch Chief	940-898-5353	william.boone@fema.dhs.gov
			Tony Furr, Public Assistance Debris Subject Matter Expert	-	tony.furr@fema.dhs.gov
National Oceanic and Atmospheric Administration (NOAA)	National Marine Fisheries Service (NMFS or NOAA Fisheries)	Emergency ESA/EFH consultation	-	-	nmfs.ser.emergency.consult@noaa.gov
		EFH information	Twyla Cheatwood	225-389-0508 x 209	twyla.cheatwood@noaa.gov
			David Dale	727-551-5736	david.dale@noaa.gov
			Rusty Swafford	409-766-3699	rusty.swafford@noaa.gov
ESA information	Rachel Sweeney	727-824-5312	rachel.sweeney@noaa.gov		
<i>continued on next page</i>	National Ocean Service, Office of Coast Survey	Navigation preparation and response	Tim Osborn, Regional Navigation Manager – Central Gulf Coast	337-291-2111	tim.osborn@noaa.gov

Federal Agencies Continued

Agency	Division	Topic	Point of Contact	Phone	Email
<i>continued from previous page</i> National Oceanic and Atmospheric Administration (NOAA)	National Ocean Service, Office of Response and Restoration, Emergency Response Division	Potential to release oil or hazardous substance	Brandi Todd, Scientific Support Coordinator for USCG Sector New Orleans	504-589-4414	brandi.todd@noaa.gov
			LTJG Steve Wall, Regional Response Officer	206-556-1604	steven.j.wall@noaa.gov
	National Ocean Service, Office of Response and Restoration, Marine Debris Division	Planning and coordination for marine debris issues	Caitlin Wessel, Gulf of Mexico Regional Coordinator	251-544-5013 (O), 251-222-0276 (C)	caitlin.wessel@noaa.gov
National Park Service (NPS)	Jean Lafitte National Historical Park and Preserve	Response in Jean Lafitte National Historical Park and Preserve	Dusty Pate, Natural Resource Program Manager	504-382-4937	haigler_pate@nps.gov
		Capability contact (ICS trained staff)	Ross Dykman	504-382-6398	ross_dykman@nps.gov
		Capability contact (vessels)	John Herrod	504-382-0301	john_herrod@nps.gov
		Capability contact (public outreach)	Kristy Wallisch, PIO	504-382-0296	kristy_wallisch@nps.gov
-	-	Response on NPS-owned lands	C. Anna Toline, Marine Scientist, Oceans Program Coordinator	843-518-1939	catherine_toline@nps.gov
Natural Resource Conservation Service (NRCS)	-	Emergency Watershed Protection (EWP) Program Information	Britt Paul, Assistant State Conservationist for Water Resources	318-473-7756	britt.paul@la.usda.gov
			Alton James, Natural Resources Specialist	985-331-9084 x 102	alton.james@la.usda.gov
U.S. Army Corps of Engineers (USACE)	Emergency Management	New Orleans District	Heath Jones, Chief Emergency Management	504-862-2426	heath.e.jones@usace.army.mil
		Galveston District	Mike DeMasi, Chief Emergency Management	-	michael.j.demasi@usace.army.mil
		Vicksburg District	Donald Walker, Chief Emergency Management	601-631-5367	donald.s.walker@usace.army.mil
			Lamar Jenkins, Area Engineer	662-455-0244	lamar.jenkins@usace.army.mil
			John Mark Henderson, Emergency Management Specialist	601-631-7222	john.m.henderson@usace.army.mil
		Memphis District	Steve Barry	-	steven.l.barry@usace.army.mil
	Mississippi Valley Division	Eddie LeBlanc, Debris Program Manager	337-332-6757	edward.l.leblanc.iii@usace.army.mil	
	Navigation and River Operations	New Orleans District – Federally maintained waterway or channel	Jane Brown, Asst. Operations Manager	-	jane.l.brown@usace.army.mil
			Ray Newman, Operations Manager, SE Waterways	504-862-2050	raymond.c.newman@usace.army.mil
			Amy Powell, Operations Manager, Completed Works	-	amy.e.powell@usace.army.mil
			Renee Scholl, Lead Engineer CEMVN Wrecks and Obstructions	504-862-1080	renee.s.scholl@usace.army.mil
		Galveston District – Federally maintained waterway or channel	Christopher Frabotta, Chief of Navigation	-	christopher.c.frabotta@usace.army.mil
		Vicksburg District – Federally maintained waterway or channel	Chad Bounds, Chief of Navigation	-	chad.r.bounds@usace.army.mil
	Joel Brown, Chief of River Operations		-	joel.t.brown@usace.army.mil	
	Neal Lewis, Section 14 (408) Review Team Lead		-	neal.lewis@usace.army.mil	
Regulatory Program	New Orleans District – Compliance and permitting	Martin Mayer, Chief Regulatory Branch	504-862-2255	martin.s.mayer@usace.army.mil	
	Galveston District – Compliance and permitting	-	409-766-3869	ceswg-pe-r@usace.army.mil	
	Vicksburg District – Compliance and permitting	-	601-631-7071	regulatory@usace.army.mil	

Federal Agencies Continued

Agency	Division	Topic	Point of Contact	Phone	Email
U.S. Coast Guard (USCG)	-	Report potential to release oil or hazardous substance	National Response Center (NRC)	800-424-8802	-
	District 8	Planning and coordination	LCDR Paul Mangini, District Response Advisory Team Supervisor	504-671-2236	paul.j.mangini@uscg.mil
			LT Chris Miller, District Response Advisory Team Environmental Specialist	504-671-2235	chris.j.miller@uscg.mil
			Dee Oos, Area Contingency Plan Program Manager	504-671-2233	damara.a.oos@uscg.mil
			Mike Sams, Incident Management Preparedness Advisor	504-671-2234	michael.k.sams@uscg.mil
			Adam Tyndale, Response Equipment Coordinator	504-671-2063	adam.j.tyndale@uscg.mil
	District 8, Sector New Orleans	Capability contact	USCG Sector New Orleans Command Center	504-365-2200	-
		Contingency Planning	LT Anne Duffus	504-365-2102	anne.m.duffus@uscg.mil
		Incident Management	LCDR Michael Wolfe, Chief Incident Management	504-365-2417	SECNOLAIMD@uscg.mil
		Waterways Management	LCDR Howard Vacco, Chief Waterways Management	504-365-2280	SECNOLA-WPM@uscg.mil
	District 8, Sector New Orleans, COTP Houma	Capability contact	USCG Sector New Orleans, MSU Morgan City OOD	985-397-3277	-
	District 8, Sector Houston-Galveston	Capability contact	USCG Sector Houston-Galveston Command Center	281-464-4840	-
U.S. Environmental Protection Agency (EPA)	Region 6	Report potential to release oil or hazardous substance	National Response Center (NRC)	800-424-8802	-
		Capability contact	EPA Region 6 Duty Officer	866-372-7745	-
U.S. Fish and Wildlife Service (USFWS)	National Wildlife Refuges (NWR)	Response in Southeast NWRs	Barret Fortier, Regional Energy Coordinator	985-882-2011	barret_fortier@fws.gov
		Response in Southeast LA NWR Complex	Neil Lalonde, Project Leader	-	neil_lalonde@fws.gov
		Response in Southwest LA NWR Complex	Chris Eggleston	337-598-2216	christian_eggleston@fws.gov
	Louisiana Ecological Services Field Office	Compliance and permitting	-	337-291-3100	lafayette@fws.gov
			Amy Trahan, Fish and Wildlife Biologist	337-291-3126	amy_trahan@fws.gov



Wilbur L. Ross, Jr.
United States Secretary of Commerce

RDML Tim Gallaudet, Ph.D., USN Ret.
Assistant Secretary of Commerce for Oceans and Atmosphere and
Acting Under Secretary of Commerce for Oceans and Atmosphere

W. Russell Callender, Ph.D.
Assistant Administrator for Ocean Services
and Coastal Zone Management