



# NORTHTEXAS WOMEN'S BASKETBALL

Assistant Director of Communications (Women's Basketball contact): Luke Della  
Phone: (510) 725-2130 • Email: luke.della@unt.edu

Website: MeanGreenSports.com • Facebook: Facebook.com/MeanGreenWBB • Twitter: @MeanGreenWBB • Instagram: @MeanGreenWBB • #GMG • #PRIDE

## 2017-18 SCHEDULE

Overall: 16-13 • C-USA: 6-10

DATE	OPPONENT	TIME/RESULT
11/4	vs. TWU (ex)	W, 69-66
<b>11/10</b>	<b>vs. MACU</b>	<b>W, 86-52</b>
<b>11/14</b>	<b>vs. TAMIU</b>	<b>W, 64-38</b>
<b>11/19</b>	<b>vs. K-State</b>	<b>L, 55-54</b>
11/23	vs. Coastal Carolina <sup>^</sup>	W, 50-34
11/24	vs. Detroit Mercy <sup>^</sup>	W, 63-57
<b>11/29</b>	<b>vs. SMU</b>	<b>W, 47-40</b>
<b>12/02</b>	<b>vs. Tulsa</b>	<b>W, 66-43</b>
12/05	at. Indiana	L, 68-63
<b>12/09</b>	<b>vs. La Salle</b>	<b>W, 70-44</b>
12/18	at. UIC	L, 70-67
12/20	at Eastern Illinois	W, 63-61(ot)
<b>12/30</b>	<b>vs. OPSU</b>	<b>W, 63-41</b>
<b>1/3</b>	<b>at LA Tech</b>	<b>L, 61-53</b>
1/5	vs. Rice	L, 50-49
<b>1/11</b>	<b>vs. Old Dominion</b>	<b>W, 63-46</b>
<b>1/13</b>	<b>vs. Charlotte</b>	<b>W, 73-68</b>
1/18	at Middle Tenn.	L, 56-48
1/20	at UAB	L, 68-52
<b>1/26</b>	<b>vs. WKU</b>	<b>L, 79-65</b>
<b>1/28</b>	<b>vs. UTEP</b>	<b>L, 50-48</b>
2/2	at UTSA	L, 70-58
2/8	at FIU	W, 92-46
2/10	at Florida Atlantic	W, 65-51
<b>2/15</b>	<b>vs. Southern Miss</b>	<b>W, 71-62</b>
2/22	at Old Dominion	W, 55-52
<b>2/24</b>	<b>vs. Marshall</b>	<b>L, 62-54</b>
<b>3/1</b>	<b>vs. UAB</b>	<b>L, 69-51</b>
3/3	at Rice	L, 47-45

### C-USA CHAMPIONSHIPS

First Round	3/7 vs. No. 6 Charlotte	W, 58-55
Quarterfinals	3/8 vs. No. 3 LA Tech	2 p.m.

@MeanGreenWBB



### [11] North Texas

MEAN GREEN (16-13, 6-10 C-USA)



### North Texas vs. LA Tech

Date..Thurs, March 8 | 2 p.m. CT  
Venue . The Ford Center at the Star  
Location ..... Frisco, TX.  
Live Tweets . @MeanGreenWBB  
TV ..... Facebook  
Steven Bartolotta(PxP), Hank Dickenson  
(analyst), Hailey Sutton (sideline)  
Radio ..... KNTU 88.1 FM  
John Liddle (PxP)  
Series.....LA Tech 12, UNT 0  
Last Meeting LA Tech 61, UNT  
53 (Ruston, LA), 1/3/18  
*UNT has never beaten the Lady Tech-  
sters and is 0-2 all-time in postseason  
play.*

### [3] LA Tech

LADY TECHSTERS (19-10, 10-6 C-USA)



North Texas opened the C-USA Tournament with a 58-55 win over Charlotte on Wednesday.

The Mean Green turned defense into offense by forcing 21 turnovers and scoring 18 points off them. The Mean Green led by as many as 14 early in the third quarter. Guard/Forward Terriell Bradley led UNT with 16 points. It's the 15th straight game she's led the team in scoring and the 17th straight game she's scored in double figures. North Texas had three players finish in double figures as Lauren Holmes ended with 11 after making her first three 3-point attempts and Grace Goodhart had 10.

## North Texas Storylines

### TERRIELL BRADLEY

Guard/forward Terriell Bradley has had the best North Texas offensive season since her head coach Jalie Mitchell dawned the North Texas uniform. Bradley is just the sixth UNT player to score over 500 points in a season, the first since Mitchell in 2001-02.

On Monday, Bradley was named C-USA First-Team All-Conference. She's the first Mean Green basketball player to earn a first-team all conference honor since Amber Jackson in 2009 when UNT played in the Sun Belt Conference. She's just the second player since Kim Blanton was named first-team all-conference in 2003.

### FIRST WINNING SEASON IN 12 YEARS

With its 55-52 win over Old Dominion on Feb. 22, North Texas secured its first winning season in 12 years. The Mean Green went 19-9 in 2005-06.

### MOST WINS IN 12 YEARS

With its first round tournament win over Charlotte, North Texas claimed its 16th win of the year, the most since 2005-06 season.

### LAST GAME RECAP

#### THE GREAT

UNT forced 12 first half turnovers and scored 17 points off those 12 first half turnovers.

#### THE GOOD

UNT got offensive help from multiple players other than Bradley.

#### THE BAD

The Mean Green made just 6-12 from the free throw line.

#### THE UGLY

North Texas allowed Charlotte to shoot 8-15 in the third quarter and make a comeback.

### BEST START IN 12 YEARS

North Texas finished non-conference with a 9-3 record, its best start since the 2005-06 season. That team was the last team to finish with a winning record.

### NOT SINCE 2002

North Texas hasn't won multiple games in a single conference tournament since 2002. It is the only time they've won more than one game in a conference tournament.

# Mean Green Media Roster

<b>2</b>		<b>Grace Goodhart</b> 5-9 • Jr. • Guard • Sunnyvale, Tx.	<b>PPG</b> 5.3 <b>RPG</b> 1.7 <b>APG</b> 1.4 <b>FG%</b> .338 <b>FT%</b> .667	<b>LAST 5:</b> 4.4 ppg, 1.2 rpg, 28 mpg <b>NOTABLE:</b> A 3-point shooter who can also score off blow bys on mid-range jumpers. Has made two 3-pointers in each of the Mean Green's last two games.	<b>CAREER HIGHS</b> <b>Pts:</b> 16 at EIU, 12/20/17 <b>Rebs:</b> 5 vs. MACU, 11/10/17 <b>Asts:</b> 6 vs. Charlotte, 1/14/18 <b>3FGs:</b> 4 vs. Charlotte, 1/14/18
<b>3</b>		<b>Brittany Smith</b> 5-6 • Jr. • Point Guard • Houston, Tx.	<b>PPG</b> 5.9 <b>RPG</b> 2.5 <b>APG</b> 3.1 <b>FG%</b> .376 <b>FT%</b> .593	<b>LAST 5:</b> 7.0 ppg, 2.6 apg, .484 FG% <b>NOTABLE:</b> A true point guard who rather get an assist than a basket. A capable 3-point shooter but only averaging 1.3 attempts per game.	<b>CAREER HIGHS</b> <b>Pts:</b> 12, 2x, last vs. UTEP, 1/28/18 <b>Rebs:</b> 10 at EIU, 12/20/17 <b>Asts:</b> 10 at FIU, 2/8/18 <b>3FGs:</b> 2, 2x, last vs. ODU, 1/11/18
<b>10</b>		<b>Adrianna Henderson</b> 5-8 • Soph. • Guard • Topeka, Ks.	<b>PPG</b> 4.6 <b>RPG</b> 2.0 <b>APG</b> 0.4 <b>FG%</b> .423 <b>FT%</b> .714	<b>LAST 5:</b> 6.2 ppg, 2.2 rpg, 16.8 mpg <b>NOTABLE:</b> An above average ball handler who is a tremendous finisher with either hand. Scores most of her points by attacking. A capable shooter who doesn't shoot as much as the coaches would like.	<b>CAREER HIGHS</b> <b>Pts:</b> 16 at UTSA, 2/2/18 <b>Rebs:</b> 5, 4x, last vs. UAB, 3/1/18 <b>Asts:</b> 4, 2x, last at S. Miss, 2/25/17 <b>3FGs:</b> 2, 2x, last at UTSA, 2/2/18
<b>12</b>		<b>Jada Poland</b> 6-0 • Soph. • Forward • St. Louis, Mo.	<b>PPG</b> 2.3 <b>RPG</b> 3.1 <b>BPG</b> 0.3 <b>FG%</b> .390 <b>FT%</b> .500	<b>LAST 5:</b> 1.0 ppg, 1.3 rpg, 8.5 mpg <b>NOTABLE:</b> Started three games this season. An energize bench player who is good at grabbing rebounds and getting put-backs. Twice has had 10-reb performances against WKU.	<b>CAREER HIGHS</b> <b>Pts:</b> 8, 2x, last vs. MACU, 11/10/17 <b>Rebs:</b> 10, 2x, last vs. WKU, 1/26/18 <b>Blks:</b> 2, 2x, last vs. UTSA, 2/2/18 <b>3FGs:</b> 1, 2x, last at FIU, 2/8/18
<b>13</b>		<b>Orianna Shillow</b> 5-8 • Jr. • Guard • Round Rock, Tx.	<b>PPG</b> 0.2 <b>RPG</b> 0.1 <b>APG</b> 0.1 <b>FG%</b> .000 <b>FT%</b> 1.000	<b>LAST 5:</b> 0 ppg, 0 rpg, 0 apg <b>NOTABLE:</b> A former walk-on who earned her scholarship this summer. Has yet to make field goal this year. Played 22 minutes at EIU due to injuries on the team.	<b>CAREER HIGHS</b> <b>Pts:</b> 16 vs. Rice, 1/30/16 <b>Rebs:</b> 2, vs. Rice, 1/30/16 <b>Asts:</b> 2, at Charlotte, 3/5/16 <b>3FGs:</b> 5, vs. Rice, 1/30/16
<b>21</b>		<b>Deja Terrell</b> 6-1 • Fr. • Forward • Oak Cliff, Tx.	<b>PPG</b> 3.6 <b>RPG</b> 2.9 <b>BPG</b> 0.8 <b>FG%</b> .412 <b>FT%</b> .500	<b>LAST 5:</b> 2.0 ppg, 1.8 rpg, 10.4 mpg <b>NOTABLE:</b> Has shown flashes of greatness. Scored 8 points in the fourth quarter versus Rice and was one rebound shy of a double-double at FAU. A tough and physical athlete who plays with a chip.	<b>CAREER HIGHS</b> <b>Pts:</b> 15 vs. OPSU, 12/30/17 <b>Rebs:</b> 9 at FAU, 2/10/18 <b>Blks:</b> 3 at UTSA, 2/2/18 <b>3FGs:</b> 1, 2x, last at ODU, 2/22/18
<b>23</b>		<b>Terriell Bradley</b> 5-10 • R-Jr. • Guard/Forward • New Orleans, LA.	<b>PPG</b> 18.7 <b>RPG</b> 5.5 <b>APG</b> 2.1 <b>FG%</b> .415 <b>FT%</b> .822	<b>LAST 5:</b> 16.4 ppg, 4.0 rpg, .353 FG% <b>NOTABLE:</b> 2018 C-USA All-Conference First Team. Earns lots of points at the FT line. A much improved 3-point shooter who made nine straight at FIU. Named C-USA Player of the Week 2x.	<b>CAREER HIGHS</b> <b>Pts:</b> 32 at FIU, 2/8/18 <b>Rebs:</b> 13 vs. FIU, 2/11/17 <b>Asts:</b> 6, 2x, last at UIC, 12/18/17 <b>3FGs:</b> 9 at FIU, 2/8/18
<b>24</b>		<b>Trena Mims</b> 5-5 • Fr. • Point Guard • Muskogee, Ok.	<b>PPG</b> 5.1 <b>RPG</b> 2.8 <b>APG</b> 2.0 <b>FG%</b> .359 <b>FT%</b> .600	<b>LAST 5:</b> 2.4 ppg, 3.0 rpg, .364 FG% <b>NOTABLE:</b> A physically strong point guard who is the Mean Green's ball stop on defense. Played all 40 minutes at Indiana and scored 10 points in 4th quarter against Tulsa.	<b>CAREER HIGHS</b> <b>Pts:</b> 15 vs. Tulsa, 12/2/17 <b>Rebs:</b> 6, 3x last vs. Charlotte, 3/7/18 <b>Asts:</b> 7 vs. UTEP, 1/28/18 <b>Stls:</b> 3, vs. UAB 3/1/18
<b>33</b>		<b>Lauren Holmes</b> 5-8 • Fr. • Guard • Fayetteville, Ar.	<b>PPG</b> 9.0 <b>RPG</b> 4.7 <b>SPG</b> 2.0 <b>FG%</b> .330 <b>FT%</b> .784	<b>LAST 5:</b> 7.4 ppg, 4.0 rpg, .412 3FG% <b>NOTABLE:</b> An elite track athlete. 2018 C-USA All-Freshman team. A streaky 3-point shooter who can also score with dribble-drives. The team's best on-ball defender. Hustle player.	<b>CAREER HIGHS</b> <b>Pts:</b> 20 vs. MACU, 11/10/17 <b>Rebs:</b> 13, vs. OPSU, 12/30/17 <b>Stls:</b> 6, vs. Rice, 1/5/18 <b>3FGs:</b> 4, 2x, last at FAU, 2/10/18
<b>34</b>		<b>Micayla Buckner</b> 6-4 • R-Jr. • Post • Garland, Tx.	<b>PPG</b> 7.3 <b>RPG</b> 5.3 <b>BPG</b> 1.1 <b>FG%</b> .483 <b>FT%</b> .354	<b>LAST 5:</b> 6.0 ppg, 4.2 rpg, 27.5 mpg <b>NOTABLE:</b> A post player who can shoot a mid-range jumper. Plays physical, sometimes too physical. Improved shot blocker. Has started every game. Needs to stay out of foul trouble.	<b>CAREER HIGHS</b> <b>Pts:</b> 20, vs. TAMU, 11/14/17 <b>Rebs:</b> 12 at LA Tech, 1/3/18 <b>Blks:</b> 4, 3x last vs. OPSU, 12/30/17
<b>HC</b>		<b>Jalie Mitchell</b> 3rd Season at North Texas 3rd Season Overall	<b>at UNT</b> 39-51	<b>at UNT:</b> Has led UNT to its first winning season in 12 years and has improved the team's overall record from the previous season every year. In less than three full seasons she has more than tripled the win total from the year before she took over. Has led UNT this season to its most wins in a single-season in 12 years. Defeated No. 16 Oklahoma in Norman for her first-ever win as a head coach and the program's first win over a ranked team. Has guided Terriell Bradley to a first-team all-conference selection, the program's first since 2009 and only their third since 2002 when Mitchell was a player at North Texas. Furthermore, every semester Mitchell has been at UNT, the Mean Green have set a program-record for GPA, setting a new all-time high with a 3.33 GPA this past semester. She is the program's all-time leading scorer with 1,764 points. Prior to taking over what she called her "dream job" in May of 2015, Mitchell was an assistant at the University of Texas for three seasons under Karen Aston.	

**STARTER** BASED ON MOST  
**RESERVE** RECENT GAME

# Streaks & Trends

## 15+

North Texas forces a C-USA leading 19.6 turnovers per game. In all 16 of the Mean Green's wins this year they've forced 15+ turnovers. They are 0-5 when they don't force at least 15 turnovers

## DOUBLE FIGURES

When three or more Mean Green players score in double figures, the Mean Green are 7-3 on the year.

## ADRIANNA HENDERSON

The Mean Green's third leading scorer over the last nine games is Adrianna Henderson, who is averaging 7.4 points per game during that stretch while averaging only 16 minutes per game.

In the last nine games, Henderson has scored 68 points total, she scored a total of 38 in the Mean Green's 12 non-conference games.

Furthermore, she's scoring at a 50 percent clip over the last nine games, which is the highest on the team.

## MOVE THE BALL

North Texas is 10-4 this year when they have 10 or more assists as a team. They are 6-9 in games when they don't. Furthermore, they are 12-3 when they have more assists.

## FIRST QUARTER

North Texas is 12-2 on the year when they are leading after the first quarter. They are 3-10 in games that they trailed in after the first quarter. All three of those wins came in conference play.

## UNDER 20

From Jan. 11 to Feb. 22, North Texas' leading scorer Terriell Bradley scored 20+ points in nine of their 11 games. However, she has been held under 20 points in four straight games and under 15 points in two of the last three games.

It is the first time this year she has been held under 20 in four straight games all year.

## 15 STRAIGHT

Terriell Bradley has led the Mean Green in scoring in 15 straight games.

## HOLMES FROM DEEP

North Texas is 9-3 this season when Lauren Holmes makes two or more 3-pointers in a game. Two of those losses came against Kansas State and Rice (1/5), both of those games the Mean Green lost by one point each.

## WHEN GRACE SCORES IN DOUBLE FIGURES

When Grace Goodhart scores in double figures the Mean Green are 5-0. Her season-high for the year is 16 points on 12/20 at Eastern Illinois.

## FOLLOWING A WIN

Since the start of conference play, North Texas is 4-2 following a win. A win that ended a losing streak has always been followed up by at least one more win in their next game.

## LAST FIVE GAMES

##	Player	gp-gs	min	avg	Total		3-Point		F-Throw		Rebounds					pts	avg					
					fg-fga	fg%	3fg-fga	3fg%	ft-fga	ft%	off	def	tot	avg	pf			dq	a	to	blk	stl
23	BRADLEY, Terriell	5-5	168	33.6	24-68	.353	4-17	.235	30-34	.882	6	14	20	4.0	13	0	7	12	2	4	82	16.4
33	HOLMES, Lauren	5-0	109	21.8	11-36	.306	7-17	.412	8-12	.667	10	10	20	4.0	8	0	2	2	3	5	37	7.4
03	SMITH, Brittany	5-5	150	30.0	15-31	.484	1-7	.143	4-8	.500	1	8	9	1.8	12	1	13	8	0	10	35	7.0
10	HENDERSON, Adriann	5-0	84	16.8	13-30	.433	1-9	.111	4-4	1.000	3	8	11	2.2	8	0	4	5	2	3	31	6.2
34	BUCKNER, Micayla	5-5	137	27.4	14-35	.400	0-0	.000	2-6	.333	7	14	21	4.2	14	0	1	9	4	1	30	6.0
02	GOODHART, Grace	5-5	142	28.4	8-24	.333	4-14	.286	2-2	1.000	0	6	6	1.2	6	0	6	4	2	2	22	4.4
24	MIMS, Trena	5-5	123	24.6	4-22	.182	0-3	.000	4-6	.667	4	11	15	3.0	9	0	8	13	0	5	12	2.4
21	TERRELL, Deja	5-0	52	10.4	4-11	.364	1-1	1.000	1-3	.333	5	4	9	1.8	11	0	0	5	5	1	10	2.0
12	POLAND, Jada	4-0	34	8.5	2-5	.400	0-0	.000	0-0	.000	3	2	5	1.3	2	0	0	1	1	0	4	1.0
13	SHILLOW, Orianna	1-0	1	1.0	0-0	.000	0-0	.000	0-0	.000	0	0	0	0.0	0	0	0	0	0	0	0	0.0
Team											8	11	19				4					
Total.....		5	1000		95-262	.363	18-68	.265	55-75	.733	47	88	135	27.0	83	1	41	63	19	31	263	52.6
Opponents.....		5	1000		103-229	.450	23-66	.348	56-71	.789	43	132	175	35.0	87	2	56	96	18	31	285	57.0



# Conference Tournament History

## EXPERIENCE

Entering the conference tournament, North Texas had just three players on its active roster who had played in more than one postseason tournament game.

Terriell Bradley, Micayla Buckner and Jada Poland are the only players who played in both of their tournament games last year.

No player on the Mean Green roster played significant time in their two postseason games in 2016. Orianna Shillow is the only active player who remains from that team.

## QUARTERFINALS

Last season, North Texas reached the quarterfinals of the C-USA Tournament. It was the first time in program history they'd made the C-USA quarterfinal round. They lost in the quarterfinals to the No. 1 seed and eventual champion WKU Lady Toppers.

## NOT SINCE 2002

North Texas last had a player named to an all-tournament team in 2002 (Jalie Mitchell, Nicole Thomas).

*Under Jalie Mitchell, North Texas is 3-0 in first-round games.*

## NOT SINCE 2002 (cont.)

North Texas hasn't won multiple games in a single conference tournament since 2002. It is the only time they've won more than one game in a conference tournament

## RECORDS.

Overall.....	12-22
First Round.....	8-4
Second-Round.....	0-1
Quarterfinals.....	3-14
Semifinals.....	1-3
Finals.....	0-1
Overtime.....	1-2
C-USA Tournament.....	3-3
Sun Belt Tournament.....	8-12
Big West Tournament.....	1-3
Southland Tournament.....	0-4
vs. WKU.....	1-4
vs. Middle Tennessee.....	1-3
vs. FAU.....	1-1
vs. FIU.....	1-1
vs. LA Tech.....	0-2
vs. UAB.....	1-0
vs. Old Dominion.....	0-1
Score 50+.....	12-20
Score 60+.....	10-13
Score 70+.....	10-2
Score 80+.....	2-0
Most Points Scored.....	84 (2002)
Fewest Points Scored.....	44 (2007)
Most Indiv. Points.....	25 (Nicole Thomas, 1999)

## OVERTIME

North Texas beat UAB last season in the first round after outlasting the Blazers in a double overtime affair. It was just the third conference tournament overtime game the Mean Green had ever played in and was the first overtime conference tournament win in program history.

## LONE STAR

North Texas is 2-4 all-time in tournament games played in the state of Texas. Before this year, they last played a conference tournament game in Texas in 2014 in El Paso. The Mean Green lost 77-59 to Louisiana Tech.

## NO CHAMPIONSHIPS

North Texas has never won a conference tournament. They reached the finals of the 2002 Sun Belt Tournament but lost to FIU.

## 1986

In 1986, the UNT women's basketball team won a one-game conference playoff against McNeese State to win the Southland Conference and resolve a tie. It's UNT's only NCAA Tournament appearance.

# Career C-USA Tournament Stats

Player	gp-gs	min	avg	fg-fga	fg%	3fg-fga	3fg%	ft-fa	ft%	off	def	tot	avg	pf	dq	a	to	blk	stl	pts	avg
Bradley	3-3	95	31.6	13-27	.484	1-7	.142	11-15	.733	4	10	14	4.6	6	0	4	4	2	3	38	12.6
Buckner	3-1	63	21	10-21	.476	0-0	.000	2-5	.400	4	7	11	3.6	9	0	1	7	6	2	22	7.3
Holmes	1-1	26	26	4-9	.444	3-5	.600	0-0	.000	1	3	4	4.0	1	0	1	0	1	1	11	11.0
Goodhart	2-1	40	20	4-9	.444	2-5	.400	0-0	.000	0	0	0	0.0	6	0	3	3	0	2	10	5.0
Smith	1-1	37	37	2-7	.285	0-1	.000	2-4	.500	1	2	3	3.0	1	0	4	2	0	2	6	6.0
Henderson	2-0	23	11.5	2-4	.500	1-2	.500	0-2	.000	0	2	2	1.0	3	0	1	4	0	1	4	2.0
Mims	1-0	19	19	2-6	.333	0-1	.000	0-0	.000	1	5	6	6.0	3	0	4	2	0	1	4	4.0
Poland	2-0	29	14.5	1-5	.200	0-0	.000	0-1	.000	0	7	7	3.5	4	2	0	1	2	0	2	1.0
Terrell	2-0	8	8	0-0	.500	0-0	.000	0-0	.000	1	2	3	3.0	2	0	0	1	1	0	0	0.0
Shillow	1-0	1	1	0-0	.000	0-0	.000	0-0	.000	0	0	0	0.0	0	0	0	0	0	0	0	0.0



# Defensive Identity

*North Texas Owns One Of  
The Nation's Top Defenses*

## **TURNOVER MARGIN**

North Texas owns a top-15 turnover margin in the nation. The Mean Green force a C-USA-best 19.6 turnovers per game while only committing 13 turnovers per game.

North Texas aims to keep its turnovers to 12 or less per game.

Saturday versus Rice, UNT committed just five turnovers.

## **SCORING DEFENSE**

North Texas owns the nation's 14th best scoring defense. It had been No. 3 for a majority of the season, but during the Mean Green's five-game losing streak it fell out of the top-10.

## **INCREASED BLOCKS**

North Texas has 109 blocks on the year, which isn't a ton but they finished last year with only 68 blocks.

Hannah Hopkins led the team in blocks last year with 16. Three UNT players this year have at least 16 blocks.

## **50 OR FEWER**

North Texas has held 10 teams to 50 or fewer points this year. They held just one team to 50 or fewer points last year. The 10 times is the most times in a single season in program history, beating the 2011-12 team's record of eight.

## **40 OR FEWER**

North Texas has held three teams this season to 40 or fewer points. Under third year head coach Jalie Mitchell, UNT has held five teams to 40 or fewer. In the 1,162 games prior to Mitchell's arrival, UNT had only accomplished that six times.

## **5 MINS OR LONGER**

North Texas has held a team scoreless for five minutes or longer 15 different times this season, they held Southern Miss scoreless for over 6 minutes and 55 seconds in the first quarter.

## **7 MIN SHUTOUT**

North Texas held Coastal Carolina scoreless for the first seven minutes and 30 seconds of their game on Nov. 23rd. However, UNT only scored seven points in that time period.

## **NCAA DEFENSIVE RANKINGS**

All games through 3/5/18

### **SCORING DEFENSE**

14th ..... 55.0 PPG

### **FORCED TURNOVERS**

37th ..... 19.5 FTPG

### **TURNOVER MARGIN**

15th ..... +6.11

## **C-USA DEFENSIVE RANKINGS**

All games through 3/5/18

### **SCORING DEFENSE**

1st ..... 55.0 PPG

### **FORCED TURNOVERS**

1st ..... 19.6 FTPG

### **TURNOVER MARGIN**

2nd ..... +6.17

### **STEALS PER GAME**

4th ..... 8.38

2017-18 C-USA FINAL REGULAR SEASON STANDINGS

SCHOOL	CONF.	CPCT.	OVERALL	PCT.
UAB	13-3	0.813	24-5	0.828
WKU	12-4	0.750	21-8	0.724
Rice	10-6	0.625	20-8	0.714
Louisiana Tech	10-6	0.625	19-10	0.655
Middle Tennessee	10-6	0.625	18-11	0.621
Charlotte	10-6	0.625	14-15	0.483
UTEP	7-9	0.438	16-13	0.552
Southern Miss	7-9	0.438	15-14	0.517
Florida Atlantic	7-9	0.438	13-14	0.481
<b>North Texas</b>	<b>6-10</b>	<b>0.375</b>	<b>15-13</b>	<b>0.536</b>
UTSA	6-10	0.375	8-20	0.286
Old Dominion	6-10	0.375	8-22	0.267
FIU	5-11	0.313	8-21	0.276
Marshall	3-13	0.188	9-20	0.310

**NORTH TEXAS QUICK FACTS**

LOCATION .....	DENTON, TEXAS
FOUNDED .....	1890
PRESIDENT .....	DR. NEAL SMATRESK
ENROLLMENT .....	38,121
FOUNDED .....	1890
ATHLETIC DIRECTOR .....	WREN BAKER
NICKNAME .....	MEAN GREEN
COLORS.....	GREEN AND WHITE
HOME ARENA.....	THE SUPER PIT
CAPACITY .....	9,797
FIRST YEAR OF BASKETBALL .....	1976
YEARS OF BASKETBALL.....	41
CONFERENCE.....	CONFERENCE USA
HEAD COACH.....	JALIE MITCHELL
OVERALL RECORD .....	39-51 (3RD SEASON)
RECORD AT NORTH TEXAS ....	39-51 (3RD SEASON)

**Mean Green's Record**

**In 2017-18 When...**

Leading After First Quarter.....	12-2
Trailing After First Quarter.....	3-10
Tied After First Quarter .....	1-1
Leading At The Half .....	13-3
Trailing At The Half.....	3-9
Tied At The Half .....	0-1
Leading After Three Quarters .....	13-2
Trailing After Three Quarters .....	1-11
Tied After Three Quarters.....	2-0
Scoring First.....	8-6
Opponent Scores First.....	8-7
Takes More FG Attempts.....	14-11
Takes Fewer FG Attempts.....	2-2
Same FG Attempts.....	0-0
Commit More Turnovers.....	1-4
Commit Fewer Turnovers.....	14-8
Turnovers Are Even.....	1-1
Commit 15+ Turnovers .....	3-6
Commit Less Than 15 Turnovers....	13-7
Force 15+ Turnovers.....	16-8
Force Less Than 15 Turnovers.....	0-5
More Rebounds.....	9-3
Fewer Rebounds .....	7-9
Same Rebounds .....	0-1
More Assists .....	12-3
Fewer Assists.....	3-9
Same Assists.....	1-1
More Fouls Committed .....	8-9
Fewer Fouls Committed .....	6-4
Same Fouls Committed .....	2-0
Shoot Higher FG%.....	10-2
Shoot Lower FG%.....	6-11
Shoot Same FG% .....	0-0
Shoot Higher FT% .....	6-3
Shoot Lower FT%.....	10-8
Shoot Same FT%.....	1-1
More Points In The Paint .....	12-7
Fewer Points In The Paint.....	3-5
Same Points In The Paint.....	1-1
More 2nd Chance Points .....	12-5
Fewer 2nd Chance Points.....	3-7
Same 2nd Chance Points .....	1-1
More Bench Points .....	10-6
Fewer Bench Points.....	5-6
Same Bench Points.....	1-1
Following A Loss.....	6-7
Following A Win.....	9-7
In November.....	5-1
In December.....	4-2
In January .....	2-6
In February .....	4-2
In March .....	1-2

**17 STRAIGHT**

Terriell Bradley has scored in double figures in 17 straight games and 26 times total this season.

**HOLMES GOES COLD**

Freshman Lauren Holmes was held scoreless and reboundless on Saturday at Rice. It was just the second time this season she'd scored zero points and second time she'd been held reboundless. It was the first time she'd been held both scoreless and reboundless.

Th previous time was held scoreless was against UTEP on Jan. 28, but that was just two days from missing the Mean Green's game against WKU with the flu.

**THE DIFFERENCE MAKER**

North Texas is 5-0 this season when Lauren Holmes scores 15 or more points in a game. She has been held under 15, however, in the Mean Green's last six games.

**PROGRAM RECORD**

Terriell Bradley tied the program-record by making 18 consecutive free throws from Feb. 22 through March 3rd's game at Rice. She tied the record on the first of two free throws but missed the second attempt that would have given her the record. She tied the record with 2017 grad and former teammate, Kelsey Criner, who finished last season making 18 straight.

**MEAN GREEN TEAM RECORD**

OVERALL.....	490-695
SUPER PIT WINS .....	272
C-USA RECORD.....	29-56
MOST CONSECUTIVE WINS .....	8 (00-01)
MOST CONSECUTIVE HOME WINS.....	14 (01-02)
MOST CONSECUTIVE ROAD WINS....	4 (00-01)

**MEAN GREEN SINGLE GAME TEAM RECORDS**

POINTS SCORED.....	116 (11/21/97)
FIELD GOALS .....	45 (2X LAST VS. 12/12/92)
3PT FIELD GOALS.....	13 (2/8/18)
FREE THROWS.....	38 (11/15/98)
REBOUNDS.....	71 (1/20/86)
ASSISTS .....	33 (2/3/94)
BLOCKS.....	10 (2X LAST 11/29/88)
STEALS.....	24 (3X LAST 2/27/00)

**MEAN GREEN SINGLE GAME INDV. RECORDS**

POINTS .....	42, J. JOHNSTON, 12/16/81
FIELD GOALS .....	18, A. TOLIVER, 2/17/77
3FGS.....	9, T. BRADLEY, 2/8/18
FREE THROWS.....	16 (2 PEOPLE)
FT ATTEMPTS.....	21, J. JOHNSTON, 12/16/81
REBOUNDS.....	26, B. SAMPEY, 11/10/79
ASSISTS .....	14, D. TAYLOR, 2/3/94
BLOCKS.....	8, C. CAMPBELL, 2/18/86
STEALS.....	9 (2 PEOPLE)

**CURRENT TEAM STREAKS**

WINS .....	1
HOME WINS.....	0
AWAY WINS.....	0
NEUTRAL WINS.....	3
C-USA WINS .....	1
LOSSES .....	0
HOME LOSSES.....	2
AWAY LOSSES.....	1
NEUTRAL LOSSES.....	0
NON-CONFERENCE WINS .....	2
NON-CONFERENCE LOSSES .....	0

**THE MEAN GREEN**

ALL NORTH TEXAS ATHLETIC TEAMS ARE REFERRED TO AS "NORTH TEXAS" OR "UNT" AND THE "MEAN GREEN." DO NOT USE THE TERMS "NORTH TEXAS STATE," OR "EAGLES", TO DESCRIBE OUR TEAM.

# Record Setting Night

## NINE 3-POINTERS

Redshirt junior Terriell Bradley made a Mean Green record nine 3-pointers on Thursday at FIU. The previous record of eight had been held by Allison Clark since November of 1997. No UNT player had made more than four 3FGs in a game this season.

## 90 PERCENT FROM DEEP

Terriell Bradley made nine of 10 from deep on Thursday at FIU. Her 90 percent 3FG percentage is the highest in Mean Green history for a player who made five or more 3-pointers.

## NINE STRAIGHT 3-POINTERS

After missing her first 3-pointer, Terriell Bradley rattled off nine straight 3-pointers, the most in Mean Green and C-USA history. It's also one off the NCAA record.

## 13 3-POINTERS

As a team, North Texas made 13 3-pointers on Thursday at FIU, beating the previous record of 11, which had been accomplished four times, most recently in 2007.

*North Texas set five program records at FIU on Feb. 8*

## 46-POINT WIN

UNT's 46-point win at FIU was the program's largest road victory ever and is the largest win since they beat ULL by 54 at home on Jan. 24, 2002, Jalie Mitchell's senior season.

## 27 ASSISTS

UNT had a season-high 27 assists at FIU on Thursday. It's the most assists the Mean Green have had in a game since February of 1995. UNT's guards had 22 assists and zero turnovers against FIU.

## 10 ASSISTS

Junior Brittany Smith had a UNT career-high 10 assists. She's just the second Mean Green player since 2003 to have 10 or more assists in a game. The other player was 2017 graduate Kelsey Criner who accomplished 10+ assists twice.

## 32 POINTS

Terriell Bradley scored a career-high 32 points on 11-of-15 shooting. She is the first Mean Green player to score 30+ since Kelsey Criner scored 34 in a 3OT game at Rice in Jan. of 2016.

## 38 FIELD GOALS

North Texas made a season-high 38 field goals on Thursday at FIU. It crushes the previous season-high of 27 (versus Charlotte) and is the most in over 12 seasons.

## 46 REBOUNDS

North Texas had a season-high 46 rebounds on Thursday at FIU. It is the second-most rebounds the Mean Green have had under third-year head coach Jalie Mitchell. The most is 47, which they accomplished at FIU on Feb. 18, 2016.

## 92 POINTS

UNT scored 92 points at FIU, the most points they've scored in a regulation game since beating Denver 93-74 on Dec. 17 2013.

## BOX SCORE

##	Player	*	Total			3-Ptr			Rebounds			PF	TP	A	TO	Blk	Stl	Min
			FG-FGA	FG-FGA	FT-FTA	FG-FGA	FG-FGA	FT-FTA	Off	Def	Tot							
02	GOODHART, Grace	*	4-8	2-4	0-0	0	4	4	0	10	4	0	0	1	26			
03	SMITH, Brittany	*	1-5	0-1	0-0	1	1	2	0	2	10	0	0	1	26			
23	BRADLEY, Terriell	*	11-15	9-10	1-2	1	6	7	3	32	2	2	1	1	32			
24	MIMS, Trena	*	4-7	0-0	0-0	1	2	3	1	8	3	0	1	2	26			
34	BUCKNER, Micayla	*	6-10	0-0	0-0	2	3	5	3	12	1	2	2	0	18			
10	HENDERSON, Adrianna		5-7	0-1	0-1	2	3	5	3	10	2	0	0	3	19			
12	POLAND, Jada		2-6	1-2	2-2	2	2	4	1	7	1	1	0	0	13			
13	SHILLOW, Orianna		0-3	0-3	0-0	0	0	0	0	0	1	1	1	0	8			
21	TERRELL, Deja		3-6	0-0	0-0	2	3	5	2	6	0	2	0	0	13			
33	HOLMES, Lauren		2-3	1-2	0-0	0	3	3	0	5	3	0	0	2	19			
Team						2	3	5										
Totals			38-70	13-23	3-5	13	30	43	13	92	27	8	5	10	200			

1st - FG %	10-1	71.4%	2nd: 9-19	47.4%	3rd: 11-2	55.0%	4th: 8-17	47.1%	Game: 38-7	54.3%	Deadball
3FG %:	3-6	50.0%	5-8	62.5%	3-4	75.0%	2-5	40.0%	13-2	56.5%	Rebound
FT %:	2-2	100.0%	0-0	0.0%	1-2	50.0%	0-1	0.0%	3-5	60.0%	1



**CAREER STARTS**

**Terriell Bradley..... 58**  
**Micayla Buckner..... 35**  
**Brittany Smith..... 25**  
**Trena Mims ..... 23**  
**Grace Goodhart..... 20**  
**Lauren Holmes..... 17**  
**Jada Poland..... 3**  
**Orianna Shillow..... 3**

**LEADS / DEFICITS**

**Largest Lead In Win**  
 48, vs. FIU 2/8/18  
**Largest Lead In Loss**  
 11, (2x) vs. K-State & at UIC  
**Largest Deficit In Win**  
 18, at ODU 2/22/18  
**Largest Deficit In Loss**  
 22, (2x) at UAB & vs. WKU

**INCREASED SUPER PIT ATTENDANCE**

For a third straight season, the Mean Green have increased their total and season average home attendance. North Texas' average home attendance of 1,209 is the highest its been in over 12 years and a 19.5% increase from last year, which was a 33% increase from 2015-16. The Mean Green currently rank seventh in C-USA in average home attendance.

**FRESHMAN 15**

UNT freshman Deja Terrell scored a season-high 15 points on Dec. 30. All three Mean Green freshmen have now scored 15 or more points in a game this season. UNT hasn't had that many freshmen score 15+ in a single season in the last 12 years.

**SIX SHOT CLOCK VIOLATIONS**

North Texas forced six shot clock violations at Rice on March 3.

**1 THROUGH 5**

Mean Green redshirt junior Terriell Bradley typically plays the 1 through the 4 in a game, but at UTSA she even played a few minutes at the five.

**IMPROVEMENTS**

The Mean Green have improved on their previous season's record each year under third-year head coach Jalie Mitchell.

Year	Record	Head Coach
14-15	5-24	Petersen
15-16	11-19	Mitchell
16-17	12-19	Mitchell
17-18	16-13	Mitchell

2017-18 Streaks

Consecutive double-figure scoring games	Total double-doubles	Total double-digit scoring games	Total games with 4+ fouls
Terriell Bradley 17	Lauren Holmes 2	Terriell Bradley 26	Micayla Buckner 12
	Micayla Buckner 2	Lauren Holmes 10	Brittany Smith 8
	Terriell Bradley 1	Micayla Buckner 9	Terriell Bradley 8
Consecutive games with a 3-pointer	Total 30+ point games	Total games with 5+ field goals	Total technical fouls
Grace Goodhart 2	Terriell Bradley 1	Terriell Bradley 19	Terriell Bradley 2
Lauren Holmes 1	Total 20+ point games	Micayla Buckner 9	Deja Terrell 1
Adrianna Henderson 1	Terriell Bradley 15	Lauren Holmes 6	Micayla Buckner 1
Consecutive made free throws	Lauren Holmes 1	Total 15+ point games	Total Disqualifications
Adrianna Henderson 6	Micayla Buckner 1	Terriell Bradley 19	Micayla Buckner 4
Lauren Holmes 4	Total 10+ point games	Lauren Holmes 5	Brittany Smith 1
Terriell Bradley 1	Terriell Bradley 15	Grace Goodhart 1	Adrianna Henderson 1
Brittany Smith 1	Lauren Holmes 5	Adrianna Henderson 1	Deja Terrell 1
Jada Poland 1	Grace Goodhart 1	Brittany Smith 2	Jada Poland 1
Consecutive games without a foul	Deja Terrell 1	Deja Terrell 1	Deja Terrell 1
Terriell Bradley 1	Trena Mims 1		Terriell Bradley 1
Orianna Shillow 1	Micayla Buckner 1		Trena Mims 1

Career vs. LA Tech

Player	gp-gs	min	avg fg-fga	fg%	3fg-fga	3fg%	ft-fta	ft%	off def tot	avg	pf dq	a to blk stl	pts avg
Bradley	3-3	99	33 15-44	.340	4-17	.235	12-15	.800	3 8 11	3.6	8 0	4 9 0 2	46 15.3
Buckner	3-1	65	22 8-20	.400	0-0	.000	3-6	.500	6 10 16	5.3	10 0	0 2 3 1	19 6.3
Henderson	2-0	17	8.5 4-6	.666	4-4	1.000	0-0	.000	1 1 2	1.0	3 0	2 4 0 0	12 6.0
Holmes	1-1	36	36 1-15	.066	1-7	.142	2-2	1.000	3 1 4	4.0	4 0	1 0 1 3	5 5.0
Smith	1-1	32	32 1-2	.500	0-0	.000	3-4	.750	0 2 2	2.0	4 0	7 4 0 1	5 5.0
Mims	1-1	28	28 2-4	.500	0-0	.000	0-0	.000	0 1 1	1.0	0 0	0 1 1 0	4 4.0
Goodhart	2-0	21	10.5 1-4	.250	0-2	.000	1-2	.500	0 4 4	2.0	4 0	1 2 0 1	3 1.5
Shillow	1-1	16	16 1-2	.500	0-1	.000	0-0	.000	0 0 0	0.0	0 0	0 0 0 0	2 2.0
Poland	2-0	14	7 0-0	.000	0-0	.000	0-0	.000	0 0 0	0.0	0 0	0 0 0 0	0 0.0
Terrell	1-0	4	4 0-1	.000	0-0	.000	0-0	.000	0 0 0	0.0	4 0	0 0 1 0	0 0.0



# 2018 C-USA ALL-CONFERENCE FIRST-TEAM

**TERRIELL  
BRADLEY**



## **WHAT THEY'RE SAYING**

**"TERRIELL IS A  
SPECIAL PLAYER  
AND A TOUGH  
MATCHUP"**

**- TERI MOREN  
INDIANA HC**

**"A TERRIFIC  
PLAYER WHO  
CAN DO IT ALL."**

**- BROOKE STOEHR  
LA TECH HC**

**"A DYNAMIC  
PLAYER."**

**- RICK INSELL  
MIDDLE TENNESSEE  
HC**

**"A HARD PLAYER  
TO GUARD  
FOR ANY  
TEAM."**

**- TRAVIS MAYS  
SMU HC**



#PRIDE

Has been the game's leading scorer 16 times

### CAREER STATS

	KU/UNT	UNT
PTS	1,145	941
REBS	345	274
ASTS	154	116
3FGs	108	84

Scored a career-high 32 points at FIU

18.8 ppg in non-conf.

159 rebs this season is a season-high

20.4 ppg in C-USA

Went 9-10 from deep on Feb. 8 at FIU and made nine in a row and is now shooting 53% from deep in C-USA play

\* 2018 C-USA All-Conference First Team

\* Preseason All-Conference

\* 16 20+ pts games this season

# TERRIELL BRADLEY

R-JR // Guard // New Orleans, LA.

# 23



# Bradley's Season In The Record Books

## POINTS

	Total	Player	Year
1.	611	Clara Campbell	85-86
2.	585	Lisa Risinger	77-78
3.	562	Jalie Mitchell	01-02
4.	<b>543</b>	<b>Terriell Bradley</b>	<b>17-18</b>
5.	526	Sharon Shelton	77-78
6.	516	Lisa Risinger	78-79
7.	471	Amber Jackson	08-09
8.	462	Ramona Black	87-88
	462	Nikki Ryan	93-94
10.	461	Jalie Mitchell	00-01

## 3-POINT FG

	Total	Player	Year
1.	65	Loryn Goodwin	12-13
2.	61	Jill Medlock	03-04
3.	60	Ashley Norris	95-96
4.	58	Candice Adams	16-17
5.	55	Laura McCoy	12-13
6.	55	Allison Clark	97-98
7.	55	Nicole Thomas	01-02
	54	Delaine Taylor	94-95
9.	<b>51</b>	<b>Terriell Bradley</b>	<b>17-18</b>
10.	49	Candice Adams	15-16

## FREE THROWS

	Total	Player	Year
1.	<b>152</b>	<b>Terriell Bradley</b>	<b>17-18</b>
2.	135	Sherronda Williams	91-92
3.	133	Ashley Norris	95-96
4.	123	Jalie Mitchell	01-02
5.	122	Jalie Mitchell	00-01
6.	121	Terriell Bradley	16-17
7.	108	Ashley Norris	97-98
	108	Jasmine Godbolt	09-10
9.	106	Rosalyn Reades	99-00
10.	105	Nelda Roy	89-90

## SCORING AVERAGE

	Avg.	Player	Year
1.	20.4	Clara Campbell	85-86
2.	19.5	Althea Toliver	76-77
	19.5	Lisa Risinger	77-78
4.	19.4	Jalie Mitchell	01-02
5.	<b>18.7</b>	<b>Terriell Bradley</b>	<b>17-18</b>
6.	18.2	Nelda Roy	88-89
7.	17.2	Lisa Risnger	78-79
8.	17.1	Nikki Ryan	93-94
9.	16.9	Isalene Jones	82-83
10.	16.8	Ashley Norris	95-96
	16.8	Amber Jackson	08-09

## 3-POINT FG%

	Avg.	Player	Year
1.	.446	Delaine Taylor	94-95
2.	<b>.421</b>	<b>Terriell Bradley</b>	<b>17-18</b>
3.	.414	Ashley Norris	99-00
4.	.400	Kelsey Criner	15-16
5.	.389	Jalie Mitchell	01-02
6.	.387	Ashley Norris	95-96
7.	.386	Jaquita Deaton	93-94
	.386	Sanetra Jackson	06-07
9.	.385	Desiree Nelson	10-11

## FREE THROW ATTEMPTS

	Total	Player	Year
1.	208	Sherronda Williams	91-92
2.	191	Jasmine Godbolt	10-11
3.	<b>185</b>	<b>Terriell Bradley</b>	<b>17-18</b>
4.	183	Jasmine Godbolt	09-10
5.	180	Clara Campbell	85-86
6.	170	Nelda Roy	89-90
7.	164	Nikki Ryan	93-94
8.	158	Jalie Mitchell	00-01
9.	157	Jasmine Godbolt	11-12
10.	154	Jalie Mitchell	01-02

# Bradley's Notable 2017-18 Games

### Double-Double At Indiana

Although it was in a losing effort, Terriell Bradley recorded her third career double-double with 22 points and 10 rebounds at Indiana on Dec. 5. Bradley led the 15-point second-half comeback by scoring 14 point in the game's final 11 minutes.

### Game-Tying Then Winner

Terriell Bradley saved the Mean Green with a game-tying layup in the final seconds of regulation at Eastern Illinois on Dec. 20. She then hit the game-winning mid-range jumper in overtime at the buzzer. The Mean Green were two players down in the game and Bradley played the entire 45 minutes.

### Daytona Beach

Terriell Bradley led UNT to back-to-back victories at the San Juan Shootout in Daytona Beach, FL., over the Thanksgiving Weekend with a combined 42 points on .519 percent shooting.

### Nine-Straight 3-Pointers

In the program's largest road victory in school history, Terriell Bradley led North Texas to the 46-point win at FIU on Feb. 8 with a career-high 32 points. In the game, Bradley made nine-straight 3-pointers after missing her first attempt, which she said was her most open attempt of the game. She finished 9-of-10 from deep.

### Outscores Tashia Brown

In a losing effort, Terriell Bradley outscored the conference's leading scorer Tashia Brown (WKU) 29 points to Brown's 28 on Jan. 26. Bradley scored a then career-high 29 points by making her first 12 free throw attempts of the game. Bradley also took 10 less field goal attempts than Brown in the game.

### 2nd Quarter vs. USM

Terriell Bradley scored 15 points in the second quarter on six-of-seven shooting and making three 3-pointers in the quarter. Her performance led North Texas to a 13-point half-time lead over the Lady Eagles.

**NCAA LEADERS**

All games through 3/5/18

**SCORING**

52. Terriell Bradley 18.8 PPG

**TOTAL FREE THROWS**

25. Terriell Bradley 148 FT

**TOTAL FREE THROWS**

38. Terriell Bradley 179 FTA

**FREE THROW%**

68. Terriell Bradley 82.7 FT%

**LEADERS IN C-USA**

All games through 3/7/18

**SCORING**

3. Terriell Bradley 18.7 PPG

41. Lauren Holmes 9.0 PPG

**REBOUNDS**

24. Terriell Bradley 5.5 RPG

25. Micayla Buckner 5.3 RPG

35. Lauren Holmes 4.7 RPG

**ASSISTS**

9. Brittany Smith 3.3 APG

26. Terriell Bradley 2.1 APG

**BLOCKS**

8. Micayla Buckner 1.1 BPG

14. Deja Terrell 0.8 BPG

**STEALS**

6. Lauren Holmes 2.0 SPG

17. Terriell Bradley 1.5 SPG

**MINUTES**

5. Terriell Bradley 34.3 MPG

**LEADERS IN C-USA**

C-USA games only through 3/5/18

**SCORING**

3. Terriell Bradley 20.4 PPG

**REBOUNDS**

20. Terriell Bradley 5.8 RPG

37. Micayla Buckner 4.4 RPG

**ASSISTS**

9. Brittany Smith 3.6 APG

**BLOCKS**

T10. Deja Terrell 0.9 BPG

T15. Micayla Buckner 0.8 BPG

**MINUTES**

6. Terriell Bradley 35.0 MPG

**OVERTIME WARRIORS**

The Mean Green are riding a five-game overtime winning streak. All five of those overtime wins came in the 2017 calendar year and were all away from their home arena, The Super Pit. North Texas only had three overtime wins away from the Super Pit in the program's 39-year history prior to last year. North Texas is 11-26 all-time in overtime games. Five of those 11 wins came in 2017.

**5 GAME WINNING STREAK**

Last season North Texas won five consecutive games from Feb. 4 to Feb. 18. It was the longest winning streak since the 2012-13 season. The Mean Green haven't won six games in a row since 2002. During the five game winning streak, North Texas won three consecutive road games, which is the longest road winning streak since 2002.

**AD's CAREER HIGH**

Sophomore Adrianna Henderson scored a career-high 16 points at UTSA on Feb. 2 in just 20 minutes on 6-of-10 shooting.

**1,000 POINTS**

When including her freshman season at Kansas, Terriell Bradley scored her 1,000th career point at FIU in the second quarter on a 3-pointer.

**NOVEMBER TO REMEMBER**

North Texas won five games before the month of December for only the second time in program history since 1981. The Mean Green fell one win shy of tying the program record for most wins before the month of January. In 2005-06, UNT started the year 10-2.

**2017**

In the 2017 calendar year UNT posted a 18-13 record. In 2016 UNT was 9-22.

**FRESHMAN OF THE WEEK**

Lauren Holmes has been named Conference USA's Freshman of the Week three times this year. She earned her first honor on Dec. 11, again on Jan. 2, and most recently on Feb. 12

**ACTIVE TEAM LEADERS**

(UNT Stats Only)

**POINTS**

- 1. Terriell Bradley 941
- 2. Micayla Buckner 345
- 3. Lauren Holmes 242
- 4. Tyara Warren^ 233
- 5. Grace Goodhart 217

**REBOUNDS**

- 1. Terriell Bradley 274
- 2. Micayla Buckner 245
- 3. Jada Poland 140
- 4. Lauren Holmes 126
- 5. Tosin Mabodu^ 115

**ASSISTS**

- 1. Terriell Bradley 116
- 2. Brittany Smith 90
- 3. Grace Goodhart 63
- 4. Trena Mims 58
- 5. Tyara Warren^ 35

**3FGs**

- 1. Terriell Bradley 84
- 2. Lauren Holmes 38
- 2. Grace Goodhart 38
- 4. Tyara Warren^ 17
- 5. Adrianna Henderson 16

^indicates out with season or career ending injury

### ATHLETIC FAMILY

Freshman Deja Terrell is the daughter of former NFL veteran David Terrell who was a safety for the Washington Redskins and Oakland Raiders. Deja Terrell's mother, Kiana Taylor-Terrell is one of the greatest UTEP women's basketball players in program history. When she graduated in 1998 she was second in program history in scoring (1,134) and second in rebounds (676). Deja Terrell was also a two-time all-district volleyball player at Life Oak Cliff High School in Dallas.

### FRESHMEN WITH A BIGGER ROLE

North Texas freshmen Lauren Holmes, Trena Mims and Deja Terrell have scored this season 242, 149 and 104 points, respectively. Last season, Adrianna Henderson led all Mean Green freshmen in scoring at the end of the year with 67 total points.

### PRESEASON ALL-CONFERENCE

Redshirt junior Terriell Bradley was voted by the C-USA coaches to the eight-player preseason all-conference team. She is the first North Texas women's basketball player to earn a preseason all-conference nod since 2011 when the Mean Green played in the Sun Belt.

### GETTING IN SHAPE

Redshirt junior post Micayla Buckner lost considerable weight this offseason and has made it a point of emphasis to run the court better, shoot the ball and be an all-conference player. The 6-4 post began her 2017-18 campaign with a career-high 12 points on 6-of-8 shooting. Her previous high was 10 points, which she accomplished twice last season. She then scored 20 points versus Texas A&M International in UNT's second game of the year. She then recorded her first career double-double in their sixth game of the year.

### OVERCOMING

Mean Green redshirt junior Terriell Bradley was born with scoliosis. It hasn't affected her much on the court with exception of one game in 2016 when she could barely walk the night before. Despite struggling to walk, Bradley went on to score 17 points in the game at Arizona and led the team to the road victory.

### NEW PGs

The point guard position is very important to head coach Jalie Mitchell. She begins the 2017-18 season with two new point guards in freshman Trena Mims and JC transfer Brittany Smith. Last year's point guards, Kelsey Criner graduated and now-sophomore Adrianna Henderson has moved to off the ball guard but can take the ball up the court to initiate the offense as can Terriell Bradley.

### EARLY SIGNEES

North Texas signed two Texas products in the early signing period. The Mean Green have added Jasmyne Robinson of Arlington Bowie High School and Charlene Shepherd of Shoemaker High School in Killeen, Texas. Robinson is a 5-foot-8 guard who is a tremendous shooter. She recently scored her 1,000th career point and was named as the district MVP her sophomore season. Shepherd is a forward who can stretch the court as a shooter. She's been named alldistrict in both basketball and volleyball.

### DOUBLE-DOUBLES

With Terriell Bradley's double-double at Indiana, North Texas has had three different players record a double-double this season, which is how many they had all of last year.

### DOUBLE-DOUBLE COUNT

#### LAUREN HOLMES:

20 pts, 12 rebs (11/10)

#### MICAYLA, BUCKNER:

10 pts, 11 rebs (11/29)

#### TERRIELL BRADLEY:

22 pts, 10 rebs (12/5)

#### LAUREN HOLMES:

19 pts, 13 rebs (12/30)

#### MICAYLA BUCKNER:

10 pts, 12 rebs (1/3)



## 2018 C-USA ALL-FRESHMAN TEAM

#PRIDE

**LAUREN HOLMES**  
**FRESHMAN GUARD #33**  
FAYETTEVILLE, AR.



## 2017 ARKANSAS FEMALE PREP ATHLETE OF THE YEAR

**3.9 HIGH SCHOOL G.P.A.**

**WORKED TWO JOBS**

**NINE HIGH SCHOOL STATE TITLES**

2X BASKETBALL STATE CHAMPS, 2016 & 2017

VOLLEYBALL STATE CHAMPS, 2017

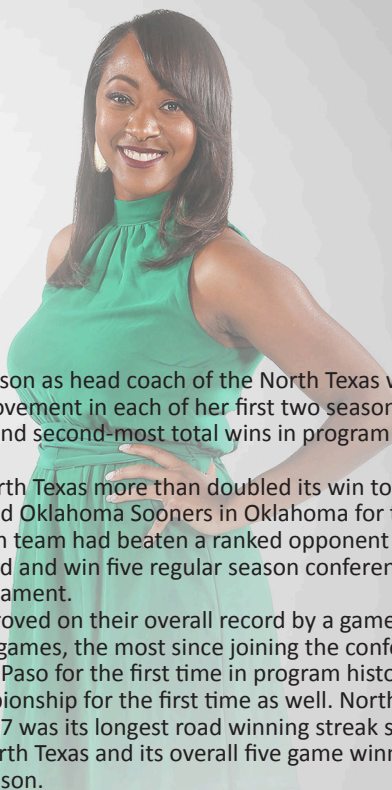
2X TEAM TRACK&FIELD STATE CHAMPS, 2015, 2017

4 INDIVIDUAL TRACK&FIELD STATE CHAMPS

- 100-M STATE CHAMP
- TRIPLE JUMP STATE CHAMP
- LONG JUMP STATE CHAMP
- 4X100 RELAY STATE CHAMP



**JALIE MITCHELL**  
**HEAD COACH**



Jalie Mitchell begins her third season as head coach of the North Texas women's basketball team. The Mean Green have seen improvement in each of her first two seasons. She enters her third season with the most road wins and second-most total wins in program history by a coach with two full seasons under their belt.

In her first season in 2015-16, North Texas more than doubled its win total from the previous season and beat the No. 17 ranked Oklahoma Sooners in Oklahoma for their first win of the year. It was the first time a Mean Green team had beaten a ranked opponent in program history. They proceeded to post an 11-19 record and win five regular season conference games and reach the second-round of the C-USA Tournament.

In 2016-17, the Mean Green improved on their overall record by a game and set program records and firsts. They won eight C-USA games, the most since joining the conference in the 2013-14 season. They defeated UTEP in El Paso for the first time in program history and they reached the quarterfinals of the C-USA Championship for the first time as well. North Texas' three-game road winning streak in February of 2017 was its longest road winning streak since the 2001-02 season when Mitchell was a senior at North Texas and its overall five game winning streak in February was the longest since the 2012-13 season.

When hired, Mitchell described North Texas as her dream job. The 2002 Mean Green graduate is the program's greatest player and boasts numerous records as a four-year letter winner. She is the program's all-time leading scorer with 1,764 points and tops the list of career free throws made and attempted. In 2002, Mitchell was named Sun Belt Conference Player of the Year when she averaged 19.4 points per game.

She earned all-conference honors all four years at North Texas and was a part of the winningest senior class in program history, compiling a 77-39 record -- including a 42-4 mark at the Super Pit -- and making back-to-back WNIT appearances in 2001 and 2002. Mitchell's No. 44 is one of two women's basketball numbers that has been retired by the Mean Green and her spectacular playing career culminated in 2007 when she was inducted into the North Texas Athletic Hall of Fame. Under Mitchell, North Texas has had a noticeable increase in offense and defense. In her first season, the Mean Green improved their field goal percentage by 7.23 percent -- the largest improvement in the country. It was also the sixth-highest shooting percentage in North Texas history. In total, the Mean Green averaged nearly 10 more points per game in 2015-16 than the year before. In 2016-17, North Texas held conference opponents to 62.9 points per game and typically held the opposition's leading scorer to 10 or more points below their season average. Prior to becoming the Mean Green's head coach, Mitchell had two stints as an assistant in Denton. Most recently under then head coach Karen Aston for the 2011-12 campaign. In that campaign, the team went 15-16.

When Aston left the Mean Green to coach the University of Texas in 2012, Mitchell followed. In her three seasons at Texas, the team combined for a 60-41 overall record. The Longhorns made the NCAA Tournament field the last two seasons, including a Sweet 16 appearance in 2015 -- their first since 2008. Mitchell began her collegiate coaching career in 2008 as an assistant coach with the Mean Green under Shanice Stephens. She spent two seasons at North Texas under Stephens before taking on the same position at UNC-Wilmington for the 2010-11 season. Mitchell helped the Seahawks finish with a 24-9 record and reach the second round of the WNIT, both program bests. In addition to the North Texas Athletics Hall of Fame, Mitchell was inducted into the Duncanville ISD Athletic Hall of Honor in October of 2015.

#PRIDE

**Mitchell Quick Facts**

- Age: 37
- Alma Mater: North Texas '02
- UNT Record: 39-51 (Third season)
- All-Time Record: 39-51 (Third season)
- Non-Conference: 17-16
- C-USA Record: 21-35
- Home Record: 20-22
- Away Record: 14-25
- Neutral Record: 5-4
- Overtime Record: 5-2
- vs. Power-Five: 2-4

**North Texas All-Time Coaching Wins**

Tina Slinker.....	241
Judy Nelson .....	66
Cherri Rapp.....	43
<i>Jalie Mitchell</i> .....	39
Denise Smith.....	33
Mike Petersen.....	28
Shanice Stephens .....	25
Karen Aston.....	15

**Mitchell Coaching Experience**

- 2015- North Texas Head Coach
- 2012-15 Texas Asst. Coach
- 2011-12 North Texas Asst. Coach
- 2010-11 UNC-Wilmington Asst. Coach
- 2008-10 North Texas Asst. Coach

**Mitchell Playing Experience**

*1998-2002 North Texas*

- \* Mean Green's all-time leading scorer
- \* Four-year all-conference player
- \* Winningest senior class in program history
- \* 2002 Sun Belt Conference Player of the Year
- \* Back-to-Back WNIT appearances (2001-02)

**Career Accolades**

- \* Had her number (44) retired at North Texas
- \* Was inducted into the North Texas Athletics Hall of Fame in 2007
- \* Was inducted into the Duncanville ISD Athletic Hall of Honor in October of 2015

**ROSTER**

No.	Name	Pos.	Ht.	Class	Hometown	Previous School
0	Callie Owens <sup>^</sup>	Guard	5-10	SO	Plano, TX	Pacific
1	Tyara Warren	Guard	5-9	RS JR	Plano, TX	West Virginia University
2	Grace Goodhart	Guard	5-9	JR	Sunnyvale, TX	Loyola University Chicago
3	Brittany Smith	Point Guard	5-6	JR	Houston, TX	South Plains College
10	Adrianna Henderson	Guard	5-8	SO	Topeka, KS	Topeka High School
12	Jada Poland	Forward	6-0	SO	St. Louis, MO	Ft. Zumwalt West High School
13	Orianna Shillow	Guard	5-8	JR	Round Rock, TX	Stony Point High School
15	Hannah Hopkins	Post	6-3	SO	Humble, TX	Atascocita High School
21	Deja Terrell	Forward	6-1	FR	Oak Cliff, TX	Life Oak Cliff High School
23	Terriell Bradley	Guard	5-10	RS JR	New Orleans, LA	University of Kansas
24	Trena Mims	Point Guard	5-5	FR	Muskogee, OK	Muskogee High School
30	Tosin Mabodu	Post	6-1	SR	Chicago, IL	Murray State College
33	Lauren Holmes	Guard	5-9	FR	Fayetteville, AR	Fayetteville High School
34	Micayla Buckner	Post	6-4	RS JR	Garland, TX	Collin College
41	Madison Townley	Forward	6-0	SO	Duncanville, TX	Duncanville High School

Head Coach: Jalie Mitchell (3rd season)

Associate Head Coach: Bobby Brasel (3rd season)

Assistant Coaches: Carlos Knox (1st season), Kasondra Foreman (3rd season)

<sup>^</sup> Redshirting

**PRONUNCIATION GUIDE**

Callie Owens	cal-EE
Tyara Warren	ty-air-uh
Adrianna Hederson	a-dre-AHN-nuh
Jada Poland	jay-duh
Orianna Shillow	or-ee-ahn-nuh shy-low
Deja Terrell	dae-juh ter-rel
Terriell Bradley	ter-ree-el
Micayla Buckner	mih-kay-luh
Jalie Mitchell	jay-lee
Bobby Brasel	braz-el (rhymes with razzle)



PLAYER PROFILES

**2 GRACE GOODHART**  
 5-9, JR. GUARD, SUNNYVALE, TX  
 LOYOLA UNIV. CHICAGO  
 SUNNYVALE HIGH SCHOOL



**2017-18 SEASON HIGHS**     **UNT CAREER HIGHS**  
 PTS: 16 (at E. Illinois, 12/20/17)     PTS: 16 (at E. Illinois, 12/20/17)  
 REBS: 5 (vs. MACU, 11/10/17)     REBS: 5 (vs. MACU, 11/10/17)  
 ASTS: 6 (vs. Charlotte, 1/14/18)     ASTS: 6 (vs. Charlotte, 1/14/18)  
 STLS: 5 (vs. Coastal Carolina (11/23/17))     STLS: 5 (vs. Coastal Carolina (11/23/17))  
 3FGs: 4 (vs. Charlotte, 1/14/18)     3FGs: 4 (vs. Charlotte, 1/14/18)



**BIO BLAST**

- **Nickname: "GG" or "Double G"**
- **Played her freshman season at Loyola Univ. Chicago**
- **Younger brother "Cash" plays football at Princeton**
- **Enjoys country music**
- **Favorite musician is Chris Young**
- **Her dog's name is "Dirk" and is named after Dirk Nowitzki**
- **Named the Texas State 3A Championship MVP after leading Sunnyvale High School to a state title in 2014-15.**

Opponent	Date	gs	min	Total		3-Pointers		Free throws		Rebounds				pts	avg						
				fg-fga	pct	3fg-fga	pct	ft-fa	pct	off	def	tot	avg			pf	a	t/o	blk	stl	
MACU	11/10/1	*	29	4-9	.444	1-4	.250	0-1	.000	0	5	5	0	2	4	1	0	0	9	9.0	
TEXAS A&M INTERNATI	11/14/1	*	30	3-9	.333	1-7	.143	2-2	1.00	0	2	2	3.5	2	3	5	0	4	9	9.0	
K-STATE	11/19/1	*	16	1-2	.500	1-2	.500	0-0	.000	0	0	0	2.3	4	0	1	0	0	3	7.0	
vs COASTAL CAROLIN	11/23/1	*	32	4-11	.364	2-6	.333	0-0	.000	0	1	1	2.0	2	3	0	0	5	10	7.8	
vs DETROIT	11/24/1	*	10	2-6	.333	1-4	.250	0-0	.000	0	3	3	2.2	0	0	0	0	0	5	7.2	
SMU	11/29/1	*	10	2-2	1.00	1-1	1.00	0-0	.000	0	0	0	1.8	2	0	2	1	0	5	6.8	
TULSA	12/2/17	*	20	0-3	.000	0-2	.000	0-0	.000	0	3	3	2.0	1	2	1	0	1	0	5.9	
at Indiana	12-5-17	*	14	0-3	.000	0-2	.000	0-0	.000	0	1	1	1.9	3	1	0	0	1	0	5.1	
LA SALLE	12/09/1	*	18	2-4	.500	1-2	.500	0-0	.000	0	0	0	1.7	1	1	0	0	0	5	5.1	
at UIC	12/18/1	*	33	3-6	.500	1-4	.250	0-0	.000	0	2	2	1.7	1	2	3	0	3	7	5.3	
at Eastern Illinois	12/20/1	*	45	4-11	.364	3-6	.500	5-5	1.00	0	3	3	1.8	2	0	4	1	1	16	6.3	
OKLAHOMA PANHANDL	12/30/1	*	18	0-9	.000	0-7	.000	0-0	.000	1	1	2	1.8	0	0	0	0	0	0	5.8	
at Louisiana Tech	01/03/1	*	18	1-3	.333	0-1	.000	1-2	.500	0	4	4	2.0	4	1	2	0	1	3	5.5	
RICE	1/5/18	*	19	1-3	.333	1-3	.333	0-0	.000	0	0	0	1.9	3	2	2	0	0	3	5.4	
OLD DOMINION	1/11/18	*	27	2-9	.222	1-6	.167	0-0	.000	1	2	3	1.9	3	1	0	0	2	5	5.3	
CHARLOTTE	1/13/18	*	29	4-8	.500	4-6	.667	2-2	1.00	0	2	2	1.9	0	6	2	0	2	14	5.9	
at Middle Tennessee	01/18/1	*	22	2-10	.200	2-7	.286	2-4	.500	0	1	1	1.9	1	1	3	0	0	8	6.0	
at UAB	01/20/1	*	23	2-4	.500	1-2	.500	0-0	.000	0	0	0	1.8	2	1	0	0	1	5	5.9	
WESTERN KENTUCKY	1/26/18	*	15	1-2	.500	0-1	.000	0-0	.000	0	0	0	1.7	2	0	3	0	0	2	5.7	
UTEP	1/28/18	*	2	0-0	.000	0-0	.000	0-2	.000	0	0	0	1.6	1	0	0	0	0	0	5.5	
at UTSA	2/2/18	*	21	2-7	.286	0-2	.000	0-0	.000	0	2	2	1.6	0	1	0	0	0	4	5.4	
at FIU	02/08/1	*	26	4-8	.500	2-4	.500	0-0	.000	0	4	4	1.7	0	4	0	0	1	10	5.6	
at Florida Atlantic	02/10/1	*	19	1-3	.333	1-2	.500	1-2	.500	0	2	2	1.7	2	0	0	0	1	4	5.5	
SOUTHERN MISS	2/15/18	*	29	1-4	.250	1-4	.250	1-2	.500	0	3	3	1.8	1	3	2	0	2	4	5.5	
at Old Dominion	02/22/1	*	27	0-2	.000	0-2	.000	0-0	.000	0	1	1	1.8	0	0	0	0	0	0	5.2	
MARSHALL	2/24/18	*	29	1-6	.167	0-2	.000	2-2	1.00	0	1	1	1.7	3	2	1	1	0	4	5.2	
UAB	3/1/18	*	25	0-3	.000	0-2	.000	0-0	.000	0	2	2	1.7	0	0	1	0	0	0	5.0	
at Rice	03/03/1	*	29	3-5	.600	2-3	.667	0-0	.000	0	2	2	1.8	0	1	0	0	0	8	5.1	
vs Charlotte	03/07/1	*	32	4-8	.500	2-5	.400	0-0	.000	0	0	0	1.7	3	3	3	0	2	10	5.3	
Totals			19	667	54-160	.338	29-99	.293	16-24	.667	2	47	49	1.7	45	42	35	4	27	153	5.3

Games played: 29  
 Minutes/game: 23.0  
 Points/game: 5.3  
 FG Pct: 33.8  
 3FG Pct: 29.3  
 FT Pct: 66.7

Rebounds/game: 1.7  
 Assists/game: 1.4  
 Turnovers/game: 1.2  
 Assist/turnover ratio: 1.2  
 Steals/game: 0.9  
 Blocks/game: 0.1

Season	gp-gs	min/avg	Total		3-Point		F-Throws		Rebounds				Scoring							
			fg-fga	pct	fg-fga	pct	ft-fa	pct	off	def	tot	avg	pf	fo	ast	to	blk	stl	pts	avg
2016-17	28-1	318/11.4	21-101	.208	11-56	.196	11-20	.550	2	20	22	0.8	32	0	21	19	1	6	64	2.3
2017-18	29-19	667/23.0	54-160	.338	29-99	.293	16-24	.667	2	47	49	1.7	45	0	42	35	4	27	153	5.3
TOTAL	57-20	985/17.3	75-261	.287	40-155	.258	27-44	.614	4	67	71	1.2	77	0	63	54	5	33	217	3.8

PLAYER PROFILES



3

**BRITTANY SMITH**

5-6, JR. POINT GUARD, HOUSTON, TX  
SOUTH PLAINS COLLEGE  
SPRING HIGH SCHOOL

**2017-18 SEASON HIGHS**

**UNT CAREER HIGHS**

PTS: 12 (2x, last vs. UTEP, 1/28/18) PTS: 12 (2x, last vs. UTEP, 1/28/18)  
REBS: 10 (at E. Illinois, 12/20/17) REBS: 10 (at E. Illinois, 12/20/17)  
ASTS: 10 (at FIU, 2/9/18) ASTS: 10 (at FIU, 2/9/18)  
STLS: 3 (vs. Charlotte, 1/14/18) STLS: 3 (vs. Charlotte, 1/14/18)  
3FGS: 2 (2x, last vs. ODU, 1/11/18) 3FGS: 2 (2x, last vs. ODU, 1/11/18)

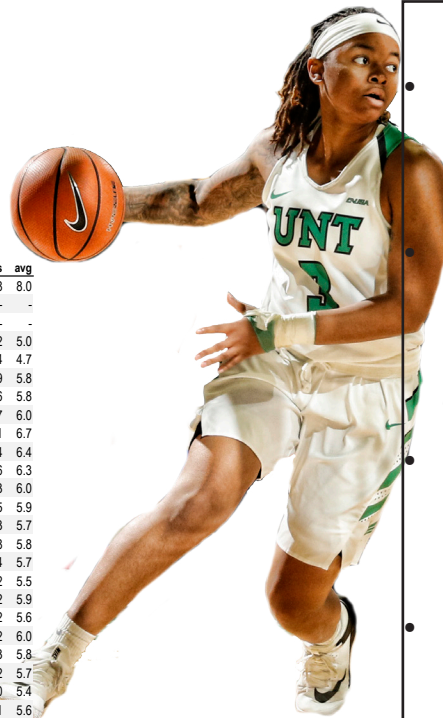
**BIO BLAST**

- 2017 Western Junior College Conference Defensive Player of the Year

- Had 15 assists on Feb. 23, 2017 against Clarendon College, which was a SPC program record

- Scored a JC career-high 22 points vs. Midland College on Feb. 2, 2017

- Led the Lady Texans to the second round of the 32-team NJCAA Tournament and a 28-6 record



Opponent	Date	gs	min	Total		3-Pointers		Free throws		Rebounds			pf	a	t/o	blk	stl	pts	avg		
				fg-fga	pct	3fg-fga	pct	ft-fa	pct	off	def	tot								avg	
MACU	11/10/1	*	23	2-5	.400	2-2	1.00	2-2	1.00	0	1	1	1.0	2	1	1	0	2	8	8.0	
TEXAS A&M INTERNATI	11/14/1		dnp	-	-	-	-	-	-	-	-	-	-	-	-	-	-	-	-	-	
K-STATE	11/19/1		dnp	-	-	-	-	-	-	-	-	-	-	-	-	-	-	-	-	-	
vs COASTAL CAROLIN	11/23/1		23	1-6	.167	0-2	.000	0-0	.000	0	1	1	1.0	1	4	5	0	2	2	5.0	
vs DETROIT	11/24/1		29	0-4	.000	0-0	.000	4-6	.667	1	1	2	1.3	5	6	1	1	1	4	4.7	
SMU	11/29/1	*	30	3-5	.600	1-2	.500	2-2	1.00	0	4	4	2.0	2	1	4	0	0	9	5.8	
TULSA	12/2/17	*	26	2-4	.500	1-2	.500	1-2	.500	0	2	2	2.0	3	3	2	0	1	6	5.8	
at Indiana	12-5-17	*	28	3-5	.600	1-1	1.00	0-0	.000	0	1	1	1.8	4	0	2	0	2	7	6.0	
LA SALLE	12/09/1	*	28	3-7	.429	1-2	.500	4-4	1.00	0	1	1	1.7	2	3	2	1	2	11	6.7	
at UIC	12/18/1	*	29	2-6	.333	0-2	.000	0-2	.000	0	1	1	1.6	4	6	4	0	1	4	6.4	
at Eastern Illinois	12/20/1	*	35	2-7	.286	0-2	.000	2-4	.500	4	6	10	2.6	5	1	5	0	0	6	6.3	
OKLAHOMA PANHANDL	12/30/1	*	28	1-2	.500	0-1	.000	1-2	.500	2	4	6	2.9	0	4	0	0	1	3	6.0	
at Louisiana Tech	01/03/1	*	32	1-2	.500	0-0	.000	3-4	.750	0	2	2	2.8	4	7	4	0	1	5	5.9	
RICE	1/5/18	*	34	1-6	.167	0-0	.000	1-2	.500	2	3	5	3.0	3	3	0	0	0	3	5.7	
OLD DOMINION	1/11/18	*	24	3-9	.333	2-5	.400	0-0	.000	2	1	3	3.0	0	5	1	0	1	8	5.8	
CHARLOTTE	1/13/18	*	34	2-6	.333	0-0	.000	0-2	.000	0	3	3	3.0	2	7	4	0	3	4	5.7	
at Middle Tennessee	01/18/1	*	34	0-0	.000	0-0	.000	2-2	1.00	0	3	3	3.0	3	2	2	0	0	2	5.5	
at UAB	01/20/1	*	30	4-9	.444	1-3	.333	3-4	.750	0	6	6	3.2	3	2	3	1	0	12	5.9	
WESTERN KENTUCKY	1/26/18	*	32	1-5	.200	0-0	.000	0-0	.000	1	3	4	3.2	4	3	4	0	2	5	6	
UTEP	1/28/18	*	30	5-10	.500	1-2	.500	1-3	.333	0	1	1	3.1	0	2	1	0	0	12	6.0	
at UTSA	2/2/18	*	24	1-6	.167	0-2	.000	1-5	.200	0	0	0	2.9	3	2	1	0	1	3	5.8	
at FIU	02/08/1	*	26	1-5	.200	0-1	.000	0-0	.000	1	1	2	2.9	0	10	0	0	1	2	5.7	
at Florida Atlantic	02/10/1	*	26	0-3	.000	0-0	.000	0-0	.000	0	1	1	2.8	4	2	4	0	0	0	5.4	
SOUTHERN MISS	2/15/18	*	34	3-6	.500	1-2	.500	4-5	.800	0	0	0	2.7	2	3	1	0	2	11	5.6	
at Old Dominion	02/22/1	*	31	4-8	.500	0-2	.000	1-2	.500	0	2	2	2.7	2	3	3	0	2	9	5.8	
MARSHALL	2/24/18	*	29	2-2	1.00	0-0	.000	1-1	1.00	0	2	2	2.6	5	2	2	0	3	5	5.8	
UAB	3/1/18	*	19	5-7	.714	0-1	.000	0-1	.000	0	1	1	2.6	3	1	1	0	0	10	5.9	
at Rice	03/03/1	*	34	2-7	.286	1-3	.333	0-0	.000	0	1	1	2.5	1	3	0	0	2	5	5.9	
vs Charlotte	03/07/1	*	37	2-7	.286	0-1	.000	2-4	.500	1	2	3	2.5	1	4	2	0	3	6	5.9	
Totals			25	789	56-149	.376	12-38	.316	35-59	.593	14	54	68	2.5	68	90	59	3	33	159	5.9

Games played: 27  
Minutes/game: 29.2  
Points/game: 5.9  
FG Pct: 37.6  
3FG Pct: 31.6  
FT Pct: 59.3

Rebounds/game: 2.5  
Assists/game: 3.3  
Turnovers/game: 2.2  
Assist/turnover ratio: 1.5  
Steals/game: 1.2  
Blocks/game: 0.1

Season	gp-gs	min/avg	Total		3-Point		F-Throws		Rebounds				Scoring							
			fg-fga	pct	fg-fga	pct	ft-fa	pct	off	def	tot	avg	pf	fo	ast	to	blk	stl	pts	avg
2017-18	27-25	789/29.2	56-149	.376	12-38	.316	35-59	.593	14	54	68	2.5	68	3	90	59	3	33	159	5.9
TOTAL	27-25	789/29.2	56-149	.376	12-38	.316	35-59	.593	14	54	68	2.5	68	3	90	59	3	33	159	5.9

PLAYER PROFILES

**10 ADRIANNA HENDERSON**  
5-8, SOPH. GUARD, TOPEKA, KS.  
TOPEKA HIGH SCHOOL



**2017-18 SEASON HIGHS**

PTS: 16 (at UTSA, 2/2/18)  
REBS: 5 (4X last vs. UAB, 3/1/18)  
ASTS: 2 (at Middle Tenn, 1/18/18)  
STLS: 3 (at FIU, 2/9/18)  
3FGs: 2 (at UTSA, 2/2/18)

**UNT CAREER HIGHS**

PTS: 16 (at UTSA, 2/2/18)  
REBS: 5 (4X last vs. 3/1/18)  
ASTS: 4 (2x, last at S. Miss, 2/25/17)  
STLS: 3 (at FIU, 2/9/18)  
3FGs: 2 (2x, last at UTSA, 2/2/18)

**BIO BLAST**

- **Nickname: "AD"**
- **Tallied 1,248 points in high school and led the city in scoring as a junior (22.1 ppg) and as a senior (21.6)**
- **Four-time All-Topeka Honoree**
- **Right-handed but prefers finishing with her left**
- **Has nine sisters and Adrianna is the only one whose last name doesn't end in the letter "L"**



Opponent	Date	gs	min	Total		3-Pointers		Free throws		Rebounds				pts	avg					
				fg-fga	pct	3fg-fga	pct	ft-fa	pct	off	def	tot	avg			pf	a	t/o	blk	stl
MACU	11/10/1	9	0-1	.000	0-0	.000	0-0	.000	0	1	1	1.0	1	0	1	1	1	0	0.0	
TEXAS A&M INTERNATI	11/14/1	13	1-3	.333	0-1	.000	1-2	.500	1	2	3	2.0	1	0	1	0	0	3	1.5	
K-STATE	11/19/1	20	2-5	.400	1-2	.500	0-0	.000	0	1	1	1.7	5	1	3	0	1	5	2.7	
vs COASTAL CAROLIN	11/23/1	5	0-0	.000	0-0	.000	0-0	.000	0	1	1	1.5	1	1	2	0	0	0	2.0	
vs DETROIT	11/24/1	22	4-11	.364	0-2	.000	1-1	1.00	2	2	4	2.0	3	0	2	0	1	9	3.4	
SMU	11/29/1	7	1-3	.333	1-3	.333	0-0	.000	0	1	1	1.8	0	0	1	0	1	3	3.3	
TULSA	12/2/17	15	0-1	.000	0-1	.000	1-2	.500	3	2	5	2.3	2	1	1	0	0	1	3.0	
at Indiana	12-5-17	16	2-2	1.00	1-1	1.00	2-2	1.00	0	1	1	2.1	2	1	2	0	1	7	3.5	
LA SALLE	12/09/1	18	0-4	.000	0-0	.000	4-4	1.00	4	1	5	2.4	1	0	0	0	2	4	3.6	
at UIC	12/18/1	2	0-0	.000	0-0	.000	0-0	.000	0	0	0	2.2	0	0	0	0	0	0	3.2	
at Eastern Illinois	12/20/1	dnp	-	-	-	-	-	-	-	-	-	-	-	-	-	-	-	-	-	
OKLAHOMA PANHANDL	12/30/1	19	2-4	.500	1-1	1.00	1-2	.500	0	0	0	2.0	1	0	0	0	1	6	3.5	
at Louisiana Tech	01/03/1	6	1-2	.500	1-1	1.00	0-0	.000	1	1	2	2.0	2	0	2	0	0	3	3.4	
RICE	1/5/18	9	1-3	.333	0-1	.000	0-0	.000	1	3	4	2.2	0	0	0	0	0	2	3.3	
OLD DOMINION	1/11/18	15	2-5	.400	1-4	.250	2-2	1.00	1	1	2	2.1	1	0	3	0	2	7	3.6	
CHARLOTTE	1/13/18	9	2-2	1.00	0-0	.000	0-0	.000	0	0	0	2.0	0	1	0	0	0	4	3.6	
at Middle Tennessee	01/18/1	16	1-2	.500	0-0	.000	0-0	.000	0	1	1	1.9	2	2	1	0	1	2	3.5	
at UAB	01/20/1	12	0-3	.000	0-2	.000	2-4	.500	0	0	0	1.8	2	0	1	0	0	2	3.4	
WESTERN KENTUCKY	1/26/18	12	1-6	.167	0-3	.000	2-2	1.00	0	1	1	1.8	2	0	4	0	0	4	3.4	
UTEP	1/28/18	6	0-1	.000	0-0	.000	0-0	.000	0	0	0	1.7	1	0	1	0	0	0	3.3	
at UTSA	2/2/18	20	6-10	.600	2-3	.667	2-3	.667	2	1	3	1.8	3	0	0	0	1	16	3.9	
at FIU	02/08/1	19	5-7	.714	0-1	.000	0-1	.000	2	3	5	1.9	3	2	0	0	3	10	4.2	
at Florida Atlantic	02/10/1	21	3-6	.500	1-2	.500	1-2	.500	0	2	2	1.9	0	0	0	0	0	8	4.4	
SOUTHERN MISS	2/15/18	6	0-0	.000	0-0	.000	2-4	.500	0	2	2	1.9	0	0	1	0	0	2	4.3	
at Old Dominion	02/22/1	14	4-10	.400	0-4	.000	2-2	1.00	1	3	4	2.0	2	1	0	1	0	10	4.5	
MARSHALL	2/24/18	17	2-2	1.00	0-0	.000	0-0	.000	0	1	1	2.0	1	0	2	1	0	4	4.5	
UAB	3/1/18	22	3-8	.375	0-2	.000	2-2	1.00	2	3	5	2.1	1	1	2	0	1	8	4.6	
at Rice	03/03/1	19	3-7	.429	0-1	.000	0-0	.000	0	0	0	2.0	3	1	0	0	1	6	4.7	
vs Charlotte	03/07/1	12	1-3	.333	1-2	.500	0-0	.000	0	1	1	2.0	1	1	1	0	1	3	4.6	
Totals		0	381	47-111	.423	10-37	.270	25-35	.714	20	35	55	2.0	41	13	31	3	18	129	4.6

Games played: 28  
Minutes/game: 13.6  
Points/game: 4.6  
FG Pct: 42.3  
3FG Pct: 27.0  
FT Pct: 71.4  
Rebounds/game: 2.0  
Assists/game: 0.5  
Turnovers/game: 1.1  
Assist/turnover ratio: 0.4  
Steals/game: 0.6  
Blocks/game: 0.1

Season	gp-gs	min/avg	Total		3-Point		F-Throws		Rebounds				Scoring							
			fg-fga	pct	fg-fga	pct	ft-fa	pct	off	def	tot	avg	pf	fo	ast	to	blk	stl	pts	avg
2016-17	18-0	177/9.8	21-45	.467	7-11	.636	18-24	.750	4	12	16	0.9	19	0	21	32	2	10	67	3.7
2017-18	28-0	381/13.6	47-111	.423	10-37	.270	25-35	.714	20	35	55	2.0	41	1	13	31	3	18	129	4.6
TOTAL	46-0	558/12.1	68-156	.436	17-48	.354	43-59	.729	24	47	71	1.5	60	1	34	63	5	28	196	4.3



PLAYER PROFILES

12 JADA POLAND

6-0, SOPH. FORWARD, ST. LOUIS, MO  
FT. ZUMWALT WEST HIGH SCHOOL



2017-18 SEASON HIGHS

PTS: 8 (vs. MACU, 11/10/17)  
REBS: 10 (vs. WKU, 1/26/18)  
ASTS: 2 (vs. TAMIU, 11/14/17)  
STLS: 3 (2x, last vs. Coastal Carolina, 11/23/17)  
BLKS: 2 (2x, last vs. UTSA, 2/2/18)

UNT CAREER HIGHS

PTS: 8 (2x, last vs. MACU, 11/10/17)  
REBS: 10 (2x, last vs. WKU, 1/26/18)  
ASTS: 2 (vs. TAMIU, 11/14/17)  
STLS: 4 (vs. Marshall, 3/5/17)  
BLKS: 2 (2x, last vs. UTSA, 2/2/18)

BIO BLAST

- Graduated as the all-time leading scorer at Ft. Zumwalt West High School with more than 1,400 points
- Set her high school program record with 40 points vs. Metro High
- Close friends with freshman Deja Terrell
- The team's trip to Daytona Beach, FL. was her first time ever seeing the ocean
- Voted most funny and best dancer on the team
- Made her first career start on Jan. 26 vs. WKU



Opponent	Date	gs	min	Total		3-Pointers		Free throws		Rebounds				pf	a	t/o	blk	stl	pts	avg
				fg-fga	pct	3fg-fga	pct	ft-fa	pct	off	def	tot	avg							
MACU	11/10/17	17	4-6	.667	0-1	.000	0-0	.000	1	3	4	4.0	1	0	2	2	1	8	8.0	
TEXAS A&M INTERNATI	11/14/17	26	0-2	.000	0-0	.000	1-2	.500	2	6	8	6.0	3	2	0	1	3	1	4.5	
K-STATE	11/19/17	22	1-2	.500	0-0	.000	0-0	.000	0	8	8	6.7	3	0	1	0	0	2	3.7	
vs COASTAL CAROLIN	11/23/17	19	1-2	.500	0-0	.000	0-0	.000	0	1	1	5.3	1	0	2	1	3	2	3.3	
vs DETROIT	11/24/17	16	0-4	.000	0-0	.000	0-2	.000	3	1	4	5.0	4	0	2	0	0	0	2.6	
SMU	11/29/17	12	0-2	.000	0-0	.000	0-0	.000	1	2	3	4.7	2	0	1	0	0	0	2.2	
TULSA	12/2/17	13	0-1	.000	0-0	.000	1-2	.500	1	3	4	4.6	3	0	2	0	0	1	2.0	
at Indiana	12-5-17	6	0-1	.000	0-0	.000	1-2	.500	1	3	4	4.5	2	1	0	0	0	1	1.9	
LA SALLE	12/09/17	7	0-2	.000	0-0	.000	3-4	.750	0	3	3	4.3	1	0	0	0	0	3	2.0	
at UIC	12/18/17	5	0-2	.000	0-1	.000	0-0	.000	2	1	3	4.2	2	0	0	0	0	0	1.8	
at Eastern Illinois	12/20/17	9	1-1	1.00	0-0	.000	0-0	.000	0	0	0	3.8	2	1	0	1	0	2	1.8	
OKLAHOMA PANHANDL	12/30/17	10	1-2	.500	0-0	.000	1-2	.500	0	0	0	3.5	2	0	1	0	0	3	1.9	
at Louisiana Tech	01/03/18	1	0-0	.000	0-0	.000	0-0	.000	0	0	0	3.2	0	0	0	0	0	0	1.8	
RICE	1/5/18	3	0-0	.000	0-0	.000	1-2	.500	1	0	1	3.1	0	0	0	0	0	1	1.7	
OLD DOMINION	1/11/18	10	0-1	.000	0-0	.000	5-10	.500	2	3	5	3.2	4	0	0	0	1	5	1.9	
CHARLOTTE	1/13/18	10	1-2	.500	0-0	.000	0-0	.000	0	1	1	3.1	2	1	0	0	1	2	1.9	
at Middle Tennessee	01/18/18	16	1-2	.500	1-1	1.00	0-0	.000	0	2	2	3.0	2	0	0	0	1	3	2.0	
at UAB	01/20/18	14	0-0	.000	0-0	.000	0-2	.000	1	1	2	2.9	4	0	2	0	0	0	1.9	
WESTERN KENTUCKY	1/26/18	34	2-5	.400	0-0	.000	0-0	.000	2	8	10	3.3	3	0	1	0	0	4	2.0	
UTEP	1/28/18	33	3-4	.750	0-1	.000	1-2	.500	1	5	6	3.5	0	1	3	1	1	7	2.3	
at UTSA	2/2/18	18	1-1	1.00	0-0	.000	0-0	.000	3	3	6	3.6	5	0	1	2	1	2	2.2	
at FIU	02/08/18	13	2-6	.333	1-2	.500	2-2	1.00	2	2	4	3.6	1	1	1	0	0	7	2.5	
at Florida Atlantic	02/10/18	13	0-2	.000	0-0	.000	0-0	.000	0	1	1	3.5	3	1	2	0	1	0	2.3	
SOUTHERN MISS	2/15/18	21	3-4	.750	0-0	.000	0-0	.000	0	1	1	3.4	1	0	1	1	0	6	2.5	
at Old Dominion	02/22/18	11	0-0	.000	0-0	.000	0-0	.000	1	0	1	3.3	1	0	1	1	0	0	2.4	
MARSHALL	2/24/18	6	1-2	.500	0-0	.000	0-0	.000	1	0	1	3.2	0	0	0	0	0	2	2.4	
UAB	3/1/18	6	0-0	.000	0-0	.000	0-0	.000	0	2	2	3.1	0	0	0	0	0	0	2.3	
at Rice	03/03/18	11	1-3	.333	0-0	.000	0-0	.000	1	0	1	3.1	1	0	0	0	0	2	2.3	
vs Charlotte	03/07/18	dnp	-	-	-	-	-	-	-	-	-	-	-	-	-	-	-	-	-	
Totals		3	382	23-59	.390	2-6	.333	16-32	.500	26	60	86	3.1	53	8	23	10	13	64	2.3

Games played: 28  
Minutes/game: 13.6  
Points/game: 2.3  
FG Pct: .39.0  
3FG Pct: .33.3  
FT Pct: 50.0

Rebounds/game: 3.1  
Assists/game: 0.3  
Turnovers/game: 0.8  
Assist/turnover ratio: 0.3  
Steals/game: 0.5  
Blocks/game: 0.4

Season	gp-gs	min/avg	Total		3-Point		F-Throws		Rebounds				Scoring							
			fg-fga	pct	fg-fga	pct	ft-fa	pct	off	def	tot	avg	pf	fo	ast	to	blk	stl	pts	avg
2016-17	20-0	178/8.9	9-29	.310	0-0	.000	9-13	.692	18	36	54	2.7	21	0	5	12	3	7	27	1.4
2017-18	28-3	382/13.6	23-59	.390	2-6	.333	16-32	.500	26	60	86	3.1	53	1	8	23	10	13	64	2.3
TOTAL	48-3	560/11.7	32-88	.364	2-6	.333	25-45	.556	44	96	140	2.9	74	1	13	35	13	20	91	1.9



PLAYER PROFILES

**13** **BORIANNA SHILLOW**  
5-8, JR. GUARD, ROUND ROCK, TX  
STONY POINT HIGH SCHOOL



**2017-18 SEASON HIGHS**

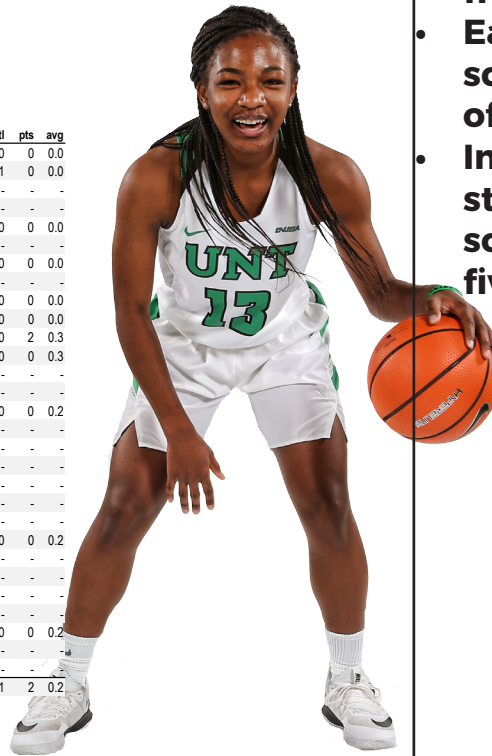
PTS: 2 (at E. Illinois, 12/20/17)  
REBS: 1 (vs. OPSU, 12/30/17)  
ASTS: 1 (3x, last at FIU, 2/8/18)  
STLS: 1 (2x, last UTEP, 1/28/18)  
3FGs: N/A

**UNT CAREER HIGHS**

PTS: 16 (vs. Rice, 1/30/16)  
REBS: 2 (vs. Rice, 1/30/16)  
ASTS: 2 (at Charlotte, 3/5/16)  
STLS: 2 (2x, last at FIU, 2/18/16)  
3FGs: 5 (vs. Rice, 1/30/16)

**BIO BLAST**

- Walked on as a freshman in 2015
- Earned an athletic scholarship in August of 2017
- In her first career start in 2015 she scored 16 points on five 3FGs



Opponent	Date	gs	min	Total		3-Pointers		Free throws		Rebounds				pf	a	t/o	blk	stl	pts	avg
				fg-fga	pct	3fg-fga	pct	ft-fa	pct	off	def	tot	avg							
MACU	11/10/1	13	0-7	.000	0-7	.000	0-0	.000	0	0	0	0.0	1	1	0	0	0	0	0.0	
TEXAS A&M INTERNATI	11/14/1	6	0-0	.000	0-0	.000	0-0	.000	0	0	0	0.0	1	0	0	0	1	0	0.0	
K-STATE	11/19/1	dnp	-	-	-	-	-	-	-	-	-	-	-	-	-	-	-	-	-	
vs COASTAL CAROLIN	11/23/1	dnp	-	-	-	-	-	-	-	-	-	-	-	-	-	-	-	-	-	
vs DETROIT	11/24/1	0	0-0	.000	0-0	.000	0-0	.000	0	0	0	0.0	0	0	0	0	0	0	0.0	
SMU	11/29/1	dnp	-	-	-	-	-	-	-	-	-	-	-	-	-	-	-	-	-	
TULSA	12/2/17	2	0-1	.000	0-1	.000	0-0	.000	0	0	0	0.0	0	0	0	0	0	0	0.0	
at Indiana	12-5-17	dnp	-	-	-	-	-	-	-	-	-	-	-	-	-	-	-	-	-	
LA SALLE	12/09/1	2	0-1	.000	0-1	.000	0-0	.000	0	0	0	0.0	0	0	0	0	0	0	0.0	
at UIC	12/18/1	0	0-0	.000	0-0	.000	0-0	.000	0	0	0	0.0	0	0	0	0	0	0	0.0	
at Eastern Illinois	12/20/1	21	0-3	.000	0-3	.000	2-2	1.00	0	0	0	0.0	1	0	0	0	0	2	0.3	
OKLAHOMA PANHANDL	12/30/1	4	0-2	.000	0-2	.000	0-0	.000	0	1	1	0.1	0	0	0	0	0	0	0.3	
at Louisiana Tech	01/03/1	dnp	-	-	-	-	-	-	-	-	-	-	-	-	-	-	-	-	-	
RICE	1/5/18	dnp	-	-	-	-	-	-	-	-	-	-	-	-	-	-	-	-	-	
OLD DOMINION	1/11/18	2	0-0	.000	0-0	.000	0-0	.000	0	0	0	0.1	0	0	0	0	0	0	0.2	
CHARLOTTE	1/13/18	dnp	-	-	-	-	-	-	-	-	-	-	-	-	-	-	-	-	-	
at Middle Tennessee	01/18/1	dnp	-	-	-	-	-	-	-	-	-	-	-	-	-	-	-	-	-	
at UAB	01/20/1	dnp	-	-	-	-	-	-	-	-	-	-	-	-	-	-	-	-	-	
WESTERN KENTUCKY	1/26/18	dnp	-	-	-	-	-	-	-	-	-	-	-	-	-	-	-	-	-	
UTEP	1/28/18	dnp	-	-	-	-	-	-	-	-	-	-	-	-	-	-	-	-	-	
at UTSA	2/2/18	dnp	-	-	-	-	-	-	-	-	-	-	-	-	-	-	-	-	-	
at FIU	02/08/1	8	0-3	.000	0-3	.000	0-0	.000	0	0	0	0.1	0	1	1	1	0	0	0.2	
at Florida Atlantic	02/10/1	dnp	-	-	-	-	-	-	-	-	-	-	-	-	-	-	-	-	-	
SOUTHERN MISS	2/15/18	dnp	-	-	-	-	-	-	-	-	-	-	-	-	-	-	-	-	-	
at Old Dominion	02/22/1	dnp	-	-	-	-	-	-	-	-	-	-	-	-	-	-	-	-	-	
MARSHALL	2/24/18	dnp	-	-	-	-	-	-	-	-	-	-	-	-	-	-	-	-	-	
UAB	3/1/18	1	0-0	.000	0-0	.000	0-0	.000	0	0	0	0.1	0	0	0	0	0	0	0.2	
at Rice	03/03/1	dnp	-	-	-	-	-	-	-	-	-	-	-	-	-	-	-	-	-	
vs Charlotte	03/07/1	dnp	-	-	-	-	-	-	-	-	-	-	-	-	-	-	-	-	-	
Totals		0	59	0-17	.000	0-17	.000	2-2	1.00	0	1	1	0.1	3	2	1	1	2	0.2	

Games played: 11  
Minutes/game: 5.4  
Points/game: 0.2  
FG Pct: 0.0  
3FG Pct: 0.0  
FT Pct: 100.0

Rebounds/game: 0.1  
Assists/game: 0.2  
Turnovers/game: 0.1  
Assist/turnover ratio: 2.0  
Steals/game: 0.1  
Blocks/game: 0.1

Season	gp-gs	min/avg	Total		3-Point		F-Throws		Rebounds				pf	fo	ast	to	blk	stl	Scoring	
			fg-fga	pct	fg-fga	pct	ft-fa	pct	off	def	tot	avg							pts	avg
2015-16	9-3	105/11.7	8-20	.400	6-17	.353	1-1	1.000	0	3	3	0.3	6	0	3	2	0	4	23	2.6
2016-17	4-0	3/0.8	0-1	.000	0-1	.000	0-0	.000	0	0	0	0.0	0	0	0	0	0	0	0	0.0
2017-18	11-0	59/5.4	0-17	.000	0-17	.000	2-2	1.000	0	1	1	0.1	3	0	2	1	1	1	2	0.2
TOTAL	24-3	167/7.0	8-38	.211	6-35	.171	3-3	1.000	0	4	4	0.2	9	0	5	3	1	5	25	1.0

PLAYER PROFILES

21

**DEJA TERRELL**  
6-1, FR. FORWARD, OAK CLIFF, TX  
LIFE OAK CLIFF HIGH SCHOOL



2017-18 SEASON HIGHS

PTS: 15 (vs. OPSU, 12/30/17)  
REBS: 9 (at FAU, 2/10/18)  
ASTS: 1 (4x, last at MTSU. 1/18/17)  
STLS: 3 (vs. OPSU, 12/30/17)  
BLKS: 3 (at UTSA, 2/2/18)

UNT CAREER HIGHS

PTS: 15 (vs. OPSU, 12/30/17)  
REBS: 9 (at FAU, 2/10/18)  
ASTS: 1 (4x, last at MTSU. 1/18/17)  
STLS: 3 (vs. OPSU, 12/30/17)  
BLKS: 3 (at UTSA, 2/2/18)



BIO BLAST

- First girls basketball player from Life Oak Cliff High School to earn a DI scholarship
- Scored a high school career high 41 point on senior day
- Daughter to former Washington Redskins and Oakland Raiders' safety David Terrell
- When her mother Kiana Taylor-Terrell graduated from UTEP, she was 2nd all-time in rebounds and 2nd all-time in points
- McDonald's High School All-American Nominee
- Aspires to be an anesthesiologist

Opponent	Date	gs	min	Total		3-Pointers		Free throws		Rebounds				pf	a	t/o	blk	stl	pts	avg
				fg-fga	pct	3fg-fga	pct	ft-fa	pct	off	def	tot	avg							
MACU	11/10/1	11	0-2	.000	0-1	.000	3-4	.750	2	1	3	3.0	1	0	1	1	0	3	3.0	
TEXAS A&M INTERNATI	11/14/1	14	2-5	.400	0-0	.000	3-5	.600	5	2	7	5.0	2	1	2	0	0	7	5.0	
K-STATE	11/19/1	14	2-4	.500	0-2	.000	0-0	.000	0	2	2	4.0	1	0	2	1	1	4	4.7	
vs COASTAL CAROLIN	11/23/1	19	2-7	.286	1-2	.500	0-2	.000	2	3	5	4.3	2	1	1	2	0	5	4.8	
vs DETROIT	11/24/1	7	0-3	.000	0-0	.000	0-0	.000	4	0	4	4.2	3	0	1	1	1	0	3.8	
SMU	11/29/1	6	1-3	.333	0-1	.000	0-1	.000	0	0	0	3.5	3	0	0	0	0	2	3.5	
TULSA	12/2/17	12	1-1	1.00	0-0	.000	1-2	.500	2	2	4	3.6	4	0	1	0	0	3	3.4	
at Indiana	12-5-17	15	2-4	.500	0-0	.000	0-0	.000	2	3	5	3.8	3	0	1	1	0	4	3.5	
LA SALLE	12/09/1	16	2-5	.400	0-1	.000	1-4	.250	2	0	2	3.6	3	0	2	0	1	5	3.7	
at UIC	12/18/1	6	0-0	.000	0-0	.000	0-0	.000	1	0	1	3.3	1	0	0	0	0	0	3.3	
at Eastern Illinois	12/20/1	9	1-2	.500	0-0	.000	1-2	.500	1	1	2	3.2	1	1	0	0	0	3	3.3	
OKLAHOMA PANHANDL	12/30/1	18	6-11	.545	0-1	.000	3-6	.500	3	3	6	3.4	1	0	0	1	3	15	4.3	
at Louisiana Tech	01/03/1	4	0-1	.000	0-0	.000	0-0	.000	0	0	0	3.2	4	0	0	1	0	0	3.9	
RICE	1/5/18	17	6-7	.857	0-1	.000	2-4	.500	3	1	4	3.2	4	0	2	2	2	14	4.6	
OLD DOMINION	1/11/18	15	0-1	.000	0-1	.000	0-0	.000	0	3	3	3.2	3	0	2	1	0	0	4.3	
CHARLOTTE	1/13/18	5	0-0	.000	0-0	.000	0-0	.000	0	0	0	3.0	1	0	0	0	0	0	4.1	
at Middle Tennessee	01/18/1	17	1-2	.500	0-0	.000	0-0	.000	0	2	2	2.9	0	1	2	2	0	2	3.9	
at UAB	01/20/1	10	1-3	.333	0-1	.000	0-0	.000	1	1	2	2.9	2	0	1	0	0	2	3.8	
WESTERN KENTUCKY	1/26/18	5	0-1	.000	0-0	.000	0-0	.000	1	0	1	2.8	2	0	0	0	0	0	3.6	
UTEP	1/28/18	15	0-1	.000	0-0	.000	1-2	.500	1	1	2	2.8	5	0	1	0	0	1	3.5	
at UTSA	2/2/18	22	2-5	.400	0-0	.000	3-6	.500	4	1	5	2.9	4	0	1	3	3	7	3.7	
at FIU	02/08/1	13	3-6	.500	0-0	.000	0-0	.000	2	3	5	3.0	2	0	2	0	0	6	3.8	
at Florida Atlantic	02/10/1	24	4-9	.444	0-0	.000	3-3	1.00	4	5	9	3.2	3	0	2	2	0	11	4.1	
SOUTHERN MISS	2/15/18	5	0-3	.000	0-1	.000	0-0	.000	0	2	2	3.2	3	0	1	0	0	0	3.9	
at Old Dominion	02/22/1	14	1-2	.500	1-1	1.00	0-0	.000	0	2	2	3.1	4	0	0	3	0	3	3.9	
MARSHALL	2/24/18	8	0-3	.000	0-0	.000	0-0	.000	3	0	3	3.1	1	0	3	1	0	0	3.7	
UAB	3/1/18	16	2-5	.400	0-0	.000	1-3	.333	1	0	1	3.0	2	0	1	0	1	5	3.8	
at Rice	03/03/1	6	1-1	1.00	0-0	.000	0-0	.000	0	0	0	2.9	2	0	0	0	0	2	3.7	
vs Charlotte	03/07/1	8	0-0	.000	0-0	.000	0-0	.000	1	2	3	2.9	2	0	1	1	0	0	3.6	
Totals		0	351	40-97	.412	2-13	.154	22-44	.500	45	40	85	2.9	69	4	30	23	12	104	3.6

Games played: 29  
Minutes/game: 12.1  
Points/game: 3.6  
FG Pct: 41.2  
3FG Pct: 15.4  
FT Pct: 50.0

Rebounds/game: 2.9  
Assists/game: 0.1  
Turnovers/game: 1.0  
Assist/turnover ratio: 0.1  
Steals/game: 0.4  
Blocks/game: 0.8

Season	gp-gs	min/avg	Total		3-Point		F-Throws			Rebounds				Scoring						
			fg-fga	pct	fg-fga	pct	ft-fa	pct	off	def	tot	avg	pf	fo	ast	to	blk	stl	pts	avg
2017-18	29-0	351/12.1	40-97	.412	2-13	.154	22-44	.500	45	40	85	2.9	69	1	4	30	23	12	104	3.6
TOTAL	29-0	351/12.1	40-97	.412	2-13	.154	22-44	.500	45	40	85	2.9	69	1	4	30	23	12	104	3.6



PLAYER PROFILES

**23 TERRIELL BRADLEY**

5-10, R-JR. G/F, NEW ORLEANS, LA  
UNIV. OF KANSAS

MANSFIELD TIMBERVIEW HIGH SCHOOL



**2017-18 SEASON HIGHS**

PTS: 32 (at FIU, 2/9/18)  
REBS: 10 (at Indiana, 12/5/17)  
ASTS: 6 (2x, last at UIC, 12/18/17)  
STLS: 5 (at E. Illinois 12/20/17)  
3FGs: 9 (at FIU, 2/9/18)

**UNT CAREER HIGHS**

PTS: 32 (at FIU, 2/9/18)  
REBS: 13 (vs. FIU, 2/11/17)  
ASTS: 6 (2x, last at UIC, 12/18/17)  
STLS: 5 (2x, last at E. Illinois 12/20/17)  
3FGs: 9 (at FIU, 2/9/18)



**BIO BLAST**

- Moved from New Orleans to Arlington, Texas, with her mom and two younger sisters after Hurricane Katrina
- Transferred from Kansas after her freshman season
- Nickname: "TB"
- 2017 Preseason All-Conference
- Named C-USA Player of the Week on Jan. 15
- Majoring in finance
- Has a pet chihuahua named "Tank"
- Favorite movie: Who framed Roger Rabbit
- Loves Amy Winehouse

Opponent	Date	gs	min	Total		3-Pointers		Free throws		Rebounds				pf	a	t/o	blk	stl	pts	avg	
				fg-fga	pct	3fg-fga	pct	ft-fa	pct	off	def	tot	avg								
MACU	11/10/1	*	29	8-13	.615	1-4	.250	1-2	.500	2	4	6	6.0	3	6	4	0	1	18	18.0	
TEXAS A&M INTERNATI	11/14/1	*	19	4-14	.286	0-1	.000	0-0	.000	3	0	3	4.5	4	2	0	0	1	8	13.0	
K-STATE	11/19/1	*	39	6-12	.500	2-2	1.00	1-2	.500	1	2	3	4.0	2	2	0	3	15	13.7		
vs COASTAL CAROLIN	11/23/1	*	35	7-13	.538	2-2	1.00	4-5	.800	0	2	2	3.5	0	2	2	0	1	20	15.3	
vs DETROIT	11/24/1	*	38	6-12	.500	0-2	.000	10-11	.909	1	7	8	4.4	3	0	2	0	3	22	16.6	
SMU	11/29/1	*	37	3-14	.214	0-5	.000	5-5	1.00	3	2	5	4.5	3	1	1	0	1	11	15.7	
TULSA	12/2/17	*	30	8-13	.615	3-5	.600	4-5	.800	2	2	4	4.4	2	3	2	1	0	23	16.7	
at Indiana	12-5-17	*	37	9-24	.375	0-4	.000	4-4	1.00	3	7	10	5.1	4	1	6	0	2	22	17.4	
LA SALLE	12/09/1	*	30	3-10	.300	1-2	.500	1-2	.500	2	5	7	5.3	1	2	2	0	2	8	16.3	
at UIC	12/18/1	*	36	7-15	.467	4-7	.571	9-10	.900	2	7	9	5.7	5	6	3	1	1	27	17.4	
at Eastern Illinois	12/20/1	*	45	7-18	.389	0-4	.000	7-9	.778	2	6	8	5.9	2	4	4	0	5	21	17.7	
OKLAHOMA PANHANDL	12/30/1	*	26	3-8	.375	0-2	.000	0-0	.000	1	0	1	5.5	3	2	4	0	3	6	16.8	
at Louisiana Tech	01/03/1	*	39	8-20	.400	3-9	.333	4-5	.800	2	3	5	5.5	0	2	3	0	2	23	17.2	
RICE	1/5/18	*	37	2-12	.167	0-3	.000	9-10	.900	3	4	7	5.6	4	2	1	0	1	13	16.9	
OLD DOMINION	1/11/18	*	33	6-12	.500	4-7	.571	7-9	.778	1	3	4	5.5	0	3	1	0	0	23	17.3	
CHARLOTTE	1/13/18	*	32	6-9	.667	3-5	.600	7-10	.700	3	4	7	5.6	4	2	4	3	3	22	17.6	
at Middle Tennessee	01/18/1	*	38	2-12	.167	1-2	.500	5-6	.833	1	6	7	5.6	2	1	2	0	0	10	17.2	
at UAB	01/20/1	*	38	6-15	.400	1-4	.250	8-9	.889	2	5	7	5.7	2	2	6	1	4	21	17.4	
WESTERN KENTUCKY	1/26/18	*	38	6-16	.375	4-5	.800	13-15	.867	2	4	6	5.7	3	1	4	2	1	29	18.0	
UTEP	1/28/18	*	38	7-18	.389	3-7	.429	5-7	.714	1	3	4	5.7	3	0	1	0	1	22	18.2	
at UTSA	2/2/18	*	34	6-17	.353	1-3	.333	6-8	.750	4	5	9	5.8	4	2	2	0	2	19	18.2	
at FIU	02/08/1	*	32	11-15	.733	9-10	.900	1-2	.500	1	6	7	5.9	3	2	2	1	1	32	18.9	
at Florida Atlantic	02/10/1	*	33	6-12	.500	1-3	.333	7-8	.875	1	4	5	5.8	1	2	1	0	0	20	18.9	
SOUTHERN MISS	2/15/18	*	34	9-18	.500	4-6	.667	4-7	.571	2	3	5	5.8	3	4	1	1	1	26	19.2	
at Old Dominion	02/22/1	*	32	5-11	.455	1-2	.500	12-13	.923	2	3	5	5.8	2	2	3	1	1	23	19.4	
MARSHALL	2/24/18	*	35	5-17	.294	2-6	.333	6-6	1.00	1	3	4	5.7	4	1	2	1	0	18	19.3	
UAB	3/1/18	*	33	4-15	.267	0-3	.000	3-3	1.00	3	3	6	5.7	4	0	4	0	0	11	19.0	
at Rice	03/03/1	*	34	4-15	.267	1-3	.333	5-6	.833	0	4	4	5.6	3	2	1	0	0	14	18.8	
vs Charlotte	03/07/1	*	34	6-10	.600	0-3	.000	4-6	.667	0	1	1	5.5	0	2	2	0	3	16	18.7	
Totals			29	995	170-410	.415	51-121	.421	152-185	.822	51	108	159	5.5	74	61	72	12	43	543	18.7

Games played: 29  
Minutes/game: 34.3  
Points/game: 18.7  
FG Pct: 41.5  
3FG Pct: 42.1  
FT Pct: 82.2

Rebounds/game: 5.5  
Assists/game: 2.1  
Turnovers/game: 2.5  
Assist/turnover ratio: 0.8  
Steals/game: 1.5  
Blocks/game: 0.4

Season	gp-gs	min/avg	Total		3-Point		F-Throws		Rebounds				Scoring							
			fg-fga	pct	fg-fga	pct	ft-fa	pct	off	def	tot	avg	pf	fo	ast	to	blk	stl	pts	avg
2016-17	31-29	890/28.7	122-334	.365	33-107	.308	121-154	.786	43	72	115	3.7	92	2	55	89	10	37	398	12.8
2017-18	29-29	995/34.3	170-410	.415	51-121	.421	152-185	.822	51	108	159	5.5	74	1	61	72	12	43	543	18.7
TOTAL	60-58	1885/31.4	292-744	.392	84-228	.368	273-339	.805	94	180	274	4.6	166	3	116	161	22	80	941	15.7

PLAYER PROFILES

24

TRENA MIMS

5-5, FR. POINT GUARD, MUSKOGEE, OK MUSKOGEE HIGH SCHOOL



2017-18 SEASON HIGHS

PTS: 15 (vs. Tulsa, 12/2/17)  
REBS: 6 (3x, last vs. Charlotte, 3/7/18)  
ASTS: 7 (vs. UTEP, 1/28/18)  
STLS: 3 (vs. UAB, 3/1/18)  
3FGS: 1 (3x, last vs. WKU, 1/26/18)

UNT CAREER HIGHS

PTS: 15 (vs. Tulsa, 12/2/17)  
REBS: 6 (3x, last vs. Charlotte, 3/7/18)  
ASTS: 7 (vs. UTEP, 1/28/18)  
STLS: 3 (vs. UAB, 3/1/18)  
3FGS: 1 (3x, last vs. WKU, 1/26/18)

BIO BLAST

- Named all-state by three different associations
- 2017 First Team All-Conference
- Vype Oklahoma Basketball Player of the Year Nominee
- Averaged 19.2 ppg as a senior
- All-State Honorable Mention as a junior
- Reached at least the semifinals in her freshman-junior seasons
- Attended the same high school as Mean Green football coach Seth Littrell
- Huge Beyonce fan
- Claims to own the most shoes on the team



Opponent	Date	gs	min	Total		3-Pointers		Free throws		Rebounds				pts	avg					
				fg-fga	pct	3fg-fga	pct	ft-fa	pct	off	def	tot	avg							
MACU	11/10/1	17	4-6	.667	0-0	.000	0-0	.000	2	3	5	5.0	4	2	2	0	8	8.0		
TEXAS A&M INTERNATI	11/14/1	* 33	4-10	.400	0-1	.000	0-1	.000	0	3	3	4.0	3	2	2	0	8	8.0		
K-STATE	11/19/1	* 30	5-11	.455	1-1	1.00	0-0	.000	1	1	2	3.3	4	4	2	0	11	9.0		
vs COASTAL CAROLIN	11/23/1	* 27	3-10	.300	0-1	.000	1-1	1.00	4	2	6	4.0	2	2	0	0	7	8.5		
vs DETROIT	11/24/1	* 24	0-4	.000	0-2	.000	2-2	1.00	0	2	2	3.6	3	0	0	0	2	7.2		
SMU	11/29/1	* 29	2-5	.400	0-0	.000	0-2	.000	3	1	4	3.7	1	4	2	0	2	4.6		
TULSA	12/2/17	* 34	5-8	.625	0-0	.000	5-9	.556	1	1	2	3.4	4	1	0	0	15	7.9		
at Indiana	12-5-17	* 40	3-7	.429	0-0	.000	3-6	.500	0	1	1	3.1	2	4	3	0	1	9.0		
LA SALLE	12/09/1	* 27	3-6	.500	0-0	.000	1-2	.500	1	2	3	3.1	1	3	3	0	1	7.9		
at UIC	12/18/1	* 18	1-4	.250	0-1	.000	0-0	.000	1	3	4	3.2	5	3	3	0	2	7.3		
at Eastern Illinois	12/20/1	* 32	2-5	.400	0-1	.000	3-4	.750	1	2	3	3.2	3	0	3	0	2	7.3		
OKLAHOMA PANHANDL	12/30/1	* 29	1-4	.250	0-0	.000	2-2	1.00	2	2	4	3.3	0	1	0	0	2	4.7		
at Louisiana Tech	01/03/1	* 28	2-4	.500	0-0	.000	0-0	.000	0	1	1	3.1	0	0	1	1	2	4.6		
RICE	1/5/18	25	0-1	.000	0-0	.000	0-0	.000	1	1	2	3.0	2	0	1	1	0	6.3		
OLD DOMINION	1/11/18	28	0-2	.000	0-1	.000	1-2	.500	1	1	2	2.9	1	1	0	0	1	5.9		
CHARLOTTE	1/13/18	26	5-8	.625	1-2	.500	0-0	.000	0	1	1	2.8	1	2	3	1	0	11.6		
at Middle Tennessee	01/18/1	22	2-6	.333	0-0	.000	0-0	.000	2	0	2	2.8	0	0	0	0	4	6.1		
at UAB	01/20/1	19	1-9	.111	0-1	.000	0-0	.000	1	1	2	2.7	2	3	0	0	1	2.5		
WESTERN KENTUCKY	1/26/18	* 37	5-9	.556	1-1	1.00	0-0	.000	1	2	3	2.7	0	6	1	0	0	11.6		
UTEP	1/28/18	* 32	1-5	.200	0-0	.000	0-0	.000	1	1	2	2.7	3	7	2	0	1	2.0		
at UTSA	2/2/18	* 26	0-7	.000	0-0	.000	0-0	.000	1	2	3	2.7	2	1	2	0	2	0.7		
at FIU	02/08/1	* 26	4-7	.571	0-0	.000	0-0	.000	1	2	3	2.7	1	3	0	1	2	8.5		
at Florida Atlantic	02/10/1	* 29	2-7	.286	0-1	.000	0-0	.000	1	0	1	2.7	4	1	4	0	4	5.7		
SOUTHERN MISS	2/15/18	* 27	2-3	.667	0-0	.000	2-3	.667	4	2	6	2.8	0	0	2	0	0	6.5		
at Old Dominion	02/22/1	* 29	0-3	.000	0-1	.000	0-0	.000	0	1	1	2.7	3	0	2	0	1	0.5		
MARSHALL	2/24/18	* 12	0-2	.000	0-1	.000	0-0	.000	1	2	3	2.7	1	0	2	0	0	0.3		
UAB	3/1/18	* 34	2-7	.286	0-0	.000	2-2	1.00	1	2	3	2.7	1	3	5	0	3	6.3		
at Rice	03/03/1	* 29	0-4	.000	0-0	.000	2-4	.500	1	1	2	2.7	1	1	2	0	2	5.2		
vs Charlotte	03/07/1	* 19	2-6	.333	0-1	.000	0-0	.000	1	5	6	2.8	3	4	2	0	1	4.5		
Totals		23	788	61-170	.359	3-16	.188	24-40	.600	34	48	82	2.8	57	58	49	4	22	149	5.1

Games played: 29  
Minutes/game: 27.2  
Points/game: 5.1  
FG Pct: 35.9  
3FG Pct: 18.8  
FT Pct: 60.0

Rebounds/game: 2.8  
Assists/game: 2.0  
Turnovers/game: 1.7  
Assist/turnover ratio: 1.2  
Steals/game: 0.8  
Blocks/game: 0.1

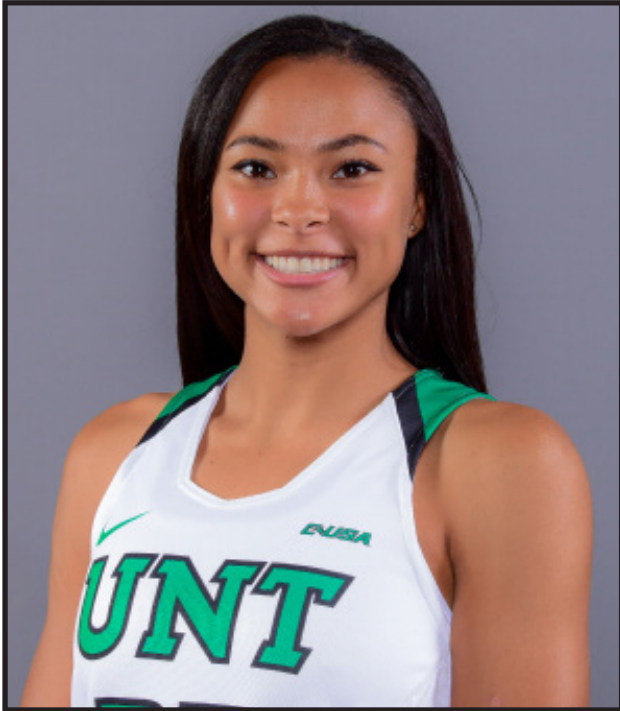
Season	gp-gs	min/avg	Total		3-Point		F-Throws		Rebounds				Scoring							
			fg-fga	pct	fg-fga	pct	ft-fa	pct	off	def	tot	avg	pf	fo	ast	to	blk	stl	pts	avg
2017-18	29-23	788/27.2	61-170	.359	3-16	.188	24-40	.600	34	48	82	2.8	57	1	58	49	4	22	149	5.1
TOTAL	29-23	788/27.2	61-170	.359	3-16	.188	24-40	.600	34	48	82	2.8	57	1	58	49	4	22	149	5.1



PLAYER PROFILES

**33 LAUREN HOLMES**

5-9, FR. GUARD, FAYETTEVILLE, AR  
FAYETTEVILLE HIGH SCHOOL



**2017-18 SEASON HIGHS**

PTS: 20 (vs. MACU, 11/10/17)  
REBS: 13 (vs. OPSU, 12/30/17)  
ASTS: 3 (at FIU, 2/9/18)  
STLS: 6 (vs. Rice, 1/5/18)  
3FGS: 4 (2x, last at FAU, 2/10/18)

**UNT CAREER HIGHS**

PTS: 20 (vs. MACU, 11/10/17)  
REBS: 13 (vs. OPSU, 12/30/17)  
ASTS: 3 (at FIU, 2/9/18)  
STLS: 6 (vs. Rice, 1/5/18)  
3FGS: 4 (2x, last at FAU, 2/10/18)

Opponent	Date	gs	min	Total		3-Pointers		Free throws		Rebounds				pts	avg						
				fg-fga	pct	3fg-fga	pct	ft-fa	pct	off	def	tot	avg			pf	a	u	blk	stl	
MACU	11/10/1	*	33	6-15	.400	4-10	.400	4-4	1.00	5	7	12	12.0	2	1	1	0	3	20	20.0	
TEXAS A&M INTERNATI	11/14/1	*	29	4-8	.500	0-3	.000	0-0	.000	3	2	5	8.5	2	1	2	0	4	8	14.0	
K-STATE	11/19/1	*	25	3-9	.333	2-7	.286	0-0	.000	1	6	7	8.0	4	0	1	1	2	8	12.0	
vs COASTAL CAROLIN	11/23/1	*	19	1-6	.167	0-2	.000	0-0	.000	4	2	6	7.5	3	0	2	1	1	2	9.5	
vs DETROIT	11/24/1	*	34	7-14	.500	3-7	.429	2-2	1.00	2	2	4	6.8	2	1	1	0	3	19	11.4	
at SMU	11/29/1	*	37	1-13	.077	1-9	.111	0-0	.000	0	0	0	5.7	1	1	0	1	1	3	10.0	
TULSA	12/2/17	*	30	4-18	.222	3-12	.250	0-0	.000	3	4	7	5.9	1	0	1	2	2	11	10.1	
at Indiana	12-5-17	*	24	4-8	.500	1-3	.333	2-3	.667	1	0	1	5.3	3	0	1	0	3	11	10.3	
LA SALLE	12/09/1	*	30	6-14	.429	3-7	.429	2-2	1.00	3	2	5	5.2	1	1	0	0	5	17	11.0	
at UIC	12/18/1	*	34	4-7	.571	1-3	.333	4-4	1.00	2	1	3	5.0	3	2	1	1	1	13	11.2	
at Eastern Illinois	12/20/1	dnp	-	-	-	-	-	-	-	-	-	-	-	-	-	-	-	-	-	-	
OKLAHOMA PANHANDL	12/30/1	*	30	8-18	.444	2-7	.286	1-1	1.00	8	5	13	5.7	3	2	0	2	5	19	11.9	
at Louisiana Tech	01/03/1	*	36	1-15	.067	1-7	.143	2-2	1.00	3	1	4	5.6	4	1	0	1	3	5	11.3	
RICE	1/5/18	*	34	4-16	.250	3-10	.300	0-0	.000	2	2	4	5.5	3	0	0	0	6	11	11.3	
OLD DOMINION	1/11/18	*	24	3-7	.429	2-4	.500	0-0	.000	1	2	3	5.3	2	0	3	1	0	8	11.1	
CHARLOTTE	1/13/18	*	20	2-6	.333	2-5	.400	0-0	.000	1	1	2	5.1	3	0	2	1	0	6	10.7	
at Middle Tennessee	01/18/1	*	22	4-11	.364	0-5	.000	1-2	.500	2	1	3	4.9	3	0	1	0	3	9	10.6	
at UAB	01/20/1	*	31	2-7	.286	0-3	.000	0-0	.000	2	3	5	4.9	1	0	0	1	1	4	10.2	
WESTERN KENTUCKY	1/26/18	dnp	-	-	-	-	-	-	-	-	-	-	-	-	-	-	-	-	-	-	
UTEP	1/28/18		19	0-6	.000	0-4	.000	0-0	.000	2	2	4	4.9	2	0	2	1	1	0	9.7	
at UTSA	2/2/18		17	0-4	.000	0-1	.000	1-2	.500	1	2	3	4.8	3	1	1	0	1	1	9.2	
at FIU	02/08/1		19	2-3	.667	1-2	.500	0-0	.000	0	3	3	4.7	0	3	0	0	2	5	9.0	
at Florida Atlantic	02/10/1		31	6-12	.500	4-9	.444	2-3	.667	3	6	9	4.9	3	0	0	0	3	18	9.4	
SOUTHERN MISS	2/15/18		25	3-8	.375	1-5	.200	0-0	.000	1	2	3	4.8	3	1	0	0	0	7	9.3	
at Old Dominion	02/22/1		12	2-5	.400	1-2	.500	3-4	.750	4	0	4	4.8	1	0	1	0	2	8	9.3	
MARSHALL	2/24/18		34	4-11	.364	2-5	.400	3-6	.500	3	4	7	4.9	4	0	0	1	1	13	9.4	
UAB	3/1/18		22	1-6	.167	1-2	.500	2-2	1.00	2	3	5	4.9	2	0	1	1	1	5	9.2	
at Rice	03/03/1		15	0-5	.000	0-3	.000	0-0	.000	0	0	0	4.7	0	1	0	0	0	0	8.9	
vs Charlotte	03/07/1		26	4-9	.444	3-5	.600	0-0	.000	1	3	4	4.7	1	1	0	0	1	11	9.0	
Totals			17	712	86-261	.330	41-142	.289	29-37	.784	60	66	126	4.7	60	17	21	16	55	242	9.0

Games played: 27  
Minutes/game: 26.4  
Points/game: 9.0  
FG Pct: .33.0  
3FG Pct: 28.9  
FT Pct: 78.4

Rebounds/game: 4.7  
Assists/game: 0.6  
Turnovers/game: 0.8  
Assist/turnover ratio: 0.8  
Steals/game: 2.0  
Blocks/game: 0.6



**BIO BLAST**

- Named C-USA Freshman of Week three times
- Has five siblings
- Enjoys kid movies
- Wants to be an anesthesiologist when she grows up
- Claims track and field is her best sport but hates running
- Nickname: "Lo"
- Decided to try volleyball as a senior in high school and led her team to a Arkansas state championship
- Enjoys volunteering and visiting animal shelters in her free time,

Season	gp-gs	min/avg	Total		3-Point		F-Throws		Rebounds				Scoring							
			fg-fga	pct	fg-fga	pct	ft-fa	pct	off	def	tot	avg	pf	fo	ast	to	blk	stl	pts	avg
2017-18	27-17	712/26.4	86-261	.330	41-142	.289	29-37	.784	60	66	126	4.7	60	0	17	21	16	55	242	9.0
TOTAL	27-17	712/26.4	86-261	.330	41-142	.289	29-37	.784	60	66	126	4.7	60	0	17	21	16	55	242	9.0

PLAYER PROFILES

**34** MICAYLA BUCKNER  
 6-4, R-JR. POST, GARLAND, TX  
 COLLIN COLLEGE  
 NAAMAN FOREST HIGH SCHOOL



**2017-18 SEASON HIGHS**      **UNT CAREER HIGHS**  
 PTS: 20 (vs. TAMIU, 11/14/17)      PTS: 20 (vs. TAMIU, 11/14/17)  
 REBS: 12 (at LA Tech, 1/3/18)      REBS: 12 (at LA Tech, 1/3/18)  
 ASTS: 1 (8x, last vs. Charlotte, 3/7/18)      ASTS: 1 (8x, last vs. Charlotte, 3/7/18)  
 STLS: 3 (2x, last at E. Illinois 12/20/17)      STLS: 4 (at SMU, 11/30/16)  
 BLKS: 4 (3x, last vs. OPSU, 12/30/17)      BLKS: 4 (3x, last vs. OPSU, 12/30/17)

**BIO BLAST**

- Began her college career at Baylor but didn't see any playing time
- Nickname: "Cay"
- Loves Chipotle
- Favorite basketball player: Kobe Bryant

Opponent	Date	gs	min	Total		3-Pointers		Free throws		Rebounds				pts	avg						
				fg-fga	pct	3fg-fga	pct	ft-fa	pct	off	def	tot	avg								
MACU	11/10/1	*	19	6-8	.750	0-0	.000	0-2	.000	3	4	7	7.0	4	0	1	1	0	12	12.0	
TEXAS A&M INTERNATI	11/14/1	*	30	9-11	.818	0-0	.000	2-5	.400	2	7	9	8.0	1	0	2	3	2	20	16.0	
K-STATE	11/19/1	*	34	3-10	.300	0-1	.000	0-0	.000	3	7	10	8.7	1	1	2	4	0	6	12.7	
vs COASTAL CAROLIN	11/23/1	*	21	1-3	.333	0-0	.000	0-2	.000	4	2	6	8.0	3	0	1	1	1	2	10.0	
vs DETROIT	11/24/1	*	20	1-5	.200	0-0	.000	0-0	.000	0	3	3	7.0	4	0	2	0	0	2	8.4	
SMU	11/29/1	*	32	5-9	.556	0-0	.000	0-2	.000	0	11	11	7.7	4	0	0	0	0	10	8.7	
TULSA	12/2/17	*	18	2-5	.400	0-0	.000	2-2	1.00	2	2	4	7.1	4	0	2	1	0	6	8.3	
at Indiana	12-5-17	*	20	1-1	1.00	0-0	.000	0-0	.000	0	2	2	6.5	2	0	1	1	0	2	7.5	
LA SALLE	12/09/1	*	24	5-13	.385	0-1	.000	0-0	.000	3	3	6	6.4	2	1	2	0	2	10	7.8	
at UIC	12/18/1	*	37	7-11	.636	0-0	.000	0-2	.000	1	7	8	6.6	5	1	3	4	3	14	8.4	
at Eastern Illinois	12/20/1	*	29	2-4	.500	0-0	.000	2-4	.500	3	6	9	6.8	3	0	5	0	3	6	8.2	
OKLAHOMA PANHANDL	12/30/1	*	18	3-7	.429	0-2	.000	1-5	.200	3	1	4	6.6	5	0	2	4	0	7	8.1	
at Louisiana Tech	01/03/1	*	36	5-10	.500	0-0	.000	0-2	.000	4	8	12	7.0	3	0	2	3	1	10	8.2	
RICE	1/5/18	*	22	1-6	.167	0-1	.000	0-0	.000	1	2	3	6.7	2	0	1	2	0	2	7.8	
OLD DOMINION	1/11/18	*	22	2-3	.667	0-0	.000	2-2	1.00	2	0	2	6.4	4	0	2	0	1	6	7.7	
CHARLOTTE	1/13/18	*	35	5-10	.500	0-0	.000	0-0	.000	1	5	6	6.4	3	1	3	0	0	10	7.8	
at Middle Tennessee	01/18/1	*	13	4-5	.800	0-0	.000	0-0	.000	3	1	4	6.2	5	0	2	1	0	8	7.8	
at UAB	01/20/1	*	23	1-5	.200	0-0	.000	2-6	.333	2	2	4	6.1	3	1	3	0	2	4	7.6	
WESTERN KENTUCKY	1/26/18	*	27	6-8	.750	0-0	.000	1-2	.500	4	3	7	6.2	2	0	4	0	0	13	7.9	
UTEP	1/28/18	*	25	1-3	.333	0-1	.000	2-2	1.00	1	2	3	6.0	4	0	1	1	2	4	7.7	
at UTSA	2/2/18	*	18	3-9	.333	0-0	.000	0-2	.000	2	1	3	5.9	4	0	1	0	0	6	7.6	
at FIU	02/08/1	*	18	6-10	.600	0-0	.000	0-0	.000	2	3	5	5.8	3	1	2	2	0	12	7.8	
at Florida Atlantic	02/10/1	*	6	0-1	.000	0-0	.000	0-0	.000	0	1	1	5.6	1	1	1	0	0	0	7.5	
SOUTHERN MISS	2/15/18	*	19	4-9	.444	0-0	.000	1-2	.500	3	2	5	5.6	5	0	1	1	1	9	7.5	
at Old Dominion	02/22/1	*	30	0-2	.000	0-0	.000	2-2	1.00	0	1	1	5.4	4	0	2	1	1	2	7.3	
MARSHALL	2/24/18	*	30	4-11	.364	0-0	.000	0-2	.000	3	5	8	5.5	1	0	2	0	0	8	7.3	
UAB	3/1/18	*	22	3-9	.333	0-0	.000	0-0	.000	3	2	5	5.5	3	0	2	1	0	6	7.3	
at Rice	03/03/1	*	23	3-5	.600	0-0	.000	0-0	.000	0	1	1	5.3	4	0	2	0	0	6	7.3	
vs Charlotte	03/07/1	*	32	4-8	.500	0-0	.000	0-2	.000	1	5	6	5.3	2	1	1	2	0	8	7.3	
Totals			29	703	97-201	.483	0-6	.000	17-48	.354	56	99	155	5.3	91	8	55	33	19	211	7.3

Games played: 29  
 Minutes/game: 24.2  
 Points/game: 7.3  
 FG Pct: 48.3  
 3FG Pct: 0.0  
 FT Pct: 35.4

Rebounds/game: 5.3  
 Assists/game: 0.3  
 Turnovers/game: 1.9  
 Assist/turnover ratio: 0.1  
 Steals/game: 0.7  
 Blocks/game: 1.1

Season	gp-gs	min/avg	Total		3-Point		F-Throws		Rebounds				Scoring							
			fg-fga	pct	fg-fga	pct	ft-fa	pct	off	def	tot	avg	pf	fo	ast	to	blk	stl	pts	avg
2016-17	30-6	432/14.4	59-126	.468	0-0	.000	16-34	.471	37	53	90	3.0	80	1	3	46	13	19	134	4.5
2017-18	29-29	703/24.2	97-201	.483	0-6	.000	17-48	.354	56	99	155	5.3	91	4	8	55	33	19	211	7.3
TOTAL	59-35	1135/19.2	156-327	.477	0-6	.000	33-82	.402	93	152	245	4.2	171	5	11	101	46	38	345	5.8

## 2017-18 Team Leaders

<b>Points</b>	<b>G</b>	<b>Pts</b>	<b>Pts/G</b>
BRADLEY, Terriell	29	543	18.7
HOLMES, Lauren	27	242	9.0
BUCKNER, Micayla	29	211	7.3
SMITH, Brittany	27	159	5.9
GOODHART, Grace	29	153	5.3
MIMS, Trena	29	149	5.1
HENDERSON, Adrianna	28	129	4.6
TERRELL, Deja	29	104	3.6
POLAND, Jada	28	64	2.3
SHILLOW, Orianna	11	2	0.2

<b>FG Percentage</b>	<b>FG</b>	<b>Att</b>	<b>Pct</b>
BUCKNER, Micayla	97	201	.483
HENDERSON, Adrianna	47	111	.423
BRADLEY, Terriell	170	410	.415
TERRELL, Deja	40	97	.412
POLAND, Jada	23	59	.390
SMITH, Brittany	56	149	.376
MIMS, Trena	61	170	.359
GOODHART, Grace	54	160	.338
HOLMES, Lauren	86	261	.330
SHILLOW, Orianna	0	17	.000

<b>3-Point Percentage</b>	<b>3FG</b>	<b>Att</b>	<b>Pct</b>
BRADLEY, Terriell	51	121	.421
POLAND, Jada	2	6	.333
SMITH, Brittany	12	38	.316
GOODHART, Grace	29	99	.293
HOLMES, Lauren	41	142	.289
HENDERSON, Adrianna	10	37	.270
MIMS, Trena	3	16	.188
TERRELL, Deja	2	13	.154
SHILLOW, Orianna	0	17	.000
BUCKNER, Micayla	0	6	.000

<b>Free Throw Percent</b>	<b>FG</b>	<b>Att</b>	<b>Pct</b>
SHILLOW, Orianna	2	2	1.000
BRADLEY, Terriell	152	185	.822
HOLMES, Lauren	29	37	.784
HENDERSON, Adrianna	25	35	.714
GOODHART, Grace	16	24	.667
MIMS, Trena	24	40	.600
SMITH, Brittany	35	59	.593
TERRELL, Deja	22	44	.500
POLAND, Jada	16	32	.500
BUCKNER, Micayla	17	48	.354

<b>Scoring Average</b>	<b>G</b>	<b>Pts</b>	<b>Avg/G</b>
BRADLEY, Terriell	29	543	18.7
HOLMES, Lauren	27	242	9.0
BUCKNER, Micayla	29	211	7.3
SMITH, Brittany	27	159	5.9
GOODHART, Grace	29	153	5.3
MIMS, Trena	29	149	5.1
HENDERSON, Adrianna	28	129	4.6
TERRELL, Deja	29	104	3.6
POLAND, Jada	28	64	2.3
SHILLOW, Orianna	11	2	0.2

<b>Field Goal Attempts</b>	<b>G</b>	<b>Att</b>	<b>Att/G</b>
BRADLEY, Terriell	29	410	14.1
HOLMES, Lauren	27	261	9.7
BUCKNER, Micayla	29	201	6.9
MIMS, Trena	29	170	5.9
GOODHART, Grace	29	160	5.5

<b>Field Goals Made</b>	<b>G</b>	<b>Made</b>	<b>Made/G</b>
BRADLEY, Terriell	29	170	5.9
BUCKNER, Micayla	29	97	3.3
HOLMES, Lauren	27	86	3.2
MIMS, Trena	29	61	2.1
SMITH, Brittany	27	56	2.1

<b>3-Point FG Attempts</b>	<b>G</b>	<b>Att</b>	<b>Att/G</b>
HOLMES, Lauren	27	142	5.3
BRADLEY, Terriell	29	121	4.2
GOODHART, Grace	29	99	3.4
SMITH, Brittany	27	38	1.4
HENDERSON, Adrianna	28	37	1.3

<b>3-Point FG Made</b>	<b>G</b>	<b>Made</b>	<b>Made/G</b>
BRADLEY, Terriell	29	51	1.8
HOLMES, Lauren	27	41	1.5
GOODHART, Grace	29	29	1.0
SMITH, Brittany	27	12	0.4
HENDERSON, Adrianna	28	10	0.4

<b>Free Throw Attempt</b>	<b>G</b>	<b>Att</b>	<b>Att/G</b>
BRADLEY, Terriell	29	185	6.4
SMITH, Brittany	27	59	2.2
BUCKNER, Micayla	29	48	1.7
TERRELL, Deja	29	44	1.5
MIMS, Trena	29	40	1.4

<b>Free Throws Made</b>	<b>G</b>	<b>Made</b>	<b>Made/G</b>
BRADLEY, Terriell	29	152	5.2
SMITH, Brittany	27	35	1.3
HOLMES, Lauren	27	29	1.1
HENDERSON, Adrianna	28	25	0.9
MIMS, Trena	29	24	0.8

## 2017-18 Player Game Highs

Points	32	BRADLEY, Terriell at FIU (02/08/18)
	29	BRADLEY, Terriell vs Western Kentucky (1/26/18)
	27	BRADLEY, Terriell at UIC (12/18/17)
	26	BRADLEY, Terriell vs Southern Miss (2/15/18)
	23	BRADLEY, Terriell at Old Dominion (02/22/18)
	23	BRADLEY, Terriell vs Old Dominion (1/11/18)
	23	BRADLEY, Terriell at Louisiana Tech (01/03/18)
	23	BRADLEY, Terriell vs Tulsa (12/2/17)
	Field Goals Made	11
9		BRADLEY, Terriell vs Southern Miss (2/15/18)
9		BRADLEY, Terriell at Indiana (12-5-17)
9		BUCKNER, Micayla vs Texas A&M International (11/14/17)
Field Goal Att.	24	BRADLEY, Terriell at Indiana (12-5-17)
	20	BRADLEY, Terriell at Louisiana Tech (01/03/18)
FG Pct (min 5 made)	.857 (6-7)	TERRELL, Deja vs Rice (1/5/18)
	.818 (9-11)	BUCKNER, Micayla vs Texas A&M International (11/14/17)
3-Point FG Made	9	BRADLEY, Terriell at FIU (02/08/18)
	4	BRADLEY, Terriell vs Southern Miss (2/15/18)
	4	HOLMES, Lauren at Florida Atlantic (02/10/18)
	4	BRADLEY, Terriell vs Western Kentucky (1/26/18)
	4	GOODHART, Grace vs Charlotte (1/13/18)
	4	BRADLEY, Terriell vs Old Dominion (1/11/18)
	4	BRADLEY, Terriell at UIC (12/18/17)
	4	HOLMES, Lauren vs MACU (11/10/17)
	3-Point FG Att.	12
10		BRADLEY, Terriell at FIU (02/08/18)
10		HOLMES, Lauren vs Rice (1/5/18)
10		HOLMES, Lauren vs MACU (11/10/17)
3-Pt FG Pct (min 2 made)	1.000 (2-2)	BRADLEY, Terriell vs COASTAL CAROLINA (11/23/17)
	1.000 (2-2)	BRADLEY, Terriell vs K-State (11/19/17)
	1.000 (2-2)	SMITH, Brittany vs MACU (11/10/17)
Free Throws Made	13	BRADLEY, Terriell vs Western Kentucky (1/26/18)
	12	BRADLEY, Terriell at Old Dominion (02/22/18)
Free Throw Att.	15	BRADLEY, Terriell vs Western Kentucky (1/26/18)
	13	BRADLEY, Terriell at Old Dominion (02/22/18)
FT Pct (min 3 made)	1.000 (6-6)	BRADLEY, Terriell vs Marshall (2/24/18)
	1.000 (5-5)	GOODHART, Grace at Eastern Illinois (12/20/17)
	1.000 (5-5)	BRADLEY, Terriell vs SMU (11/29/17)
	1.000 (4-4)	HOLMES, Lauren at UIC (12/18/17)
	1.000 (4-4)	SMITH, Brittany vs La Salle (12/09/17)
	1.000 (4-4)	HENDERSON, Adrianna vs La Salle (12/09/17)
	1.000 (4-4)	BRADLEY, Terriell at Indiana (12-5-17)
	1.000 (4-4)	HOLMES, Lauren vs MACU (11/10/17)
	1.000 (3-3)	BRADLEY, Terriell vs UAB (3/1/18)
	1.000 (3-3)	TERRELL, Deja at Florida Atlantic (02/10/18)
Rebounds	13	HOLMES, Lauren vs Oklahoma Panhandle St. Univ. (12/30/17)
	12	BUCKNER, Micayla at Louisiana Tech (01/03/18)
	12	HOLMES, Lauren vs MACU (11/10/17)
Assists	10	SMITH, Brittany at FIU (02/08/18)
	7	MIMS, Trena vs UTEP (1/28/18)
	7	SMITH, Brittany vs Charlotte (1/13/18)
	7	SMITH, Brittany at Louisiana Tech (01/03/18)
Steals	6	HOLMES, Lauren vs Rice (1/5/18)



## 2017-18 Team Highs

POINTS	92	at FIU (02/08/18)
	86	MACU (11/10/17)
	73	CHARLOTTE (1/13/18)
	71	SOUTHERN MISS (2/15/18)
	70	LA SALLE (12/09/17)
FIELD GOALS MADE	38	at FIU (02/08/18)
	34	MACU (11/10/17)
FIELD GOAL ATTEMPTS	72	MACU (11/10/17)
	70	at FIU (02/08/18)
FIELD GOAL PERCENTAG	.543 (38-70)	at FIU (02/08/18)
	.529 (27-51)	CHARLOTTE (1/13/18)
3 PT FIELD GOALS MADE	13	at FIU (02/08/18)
	10	CHARLOTTE (1/13/18)
	10	OLD DOMINION (1/11/18)
3 PT FG ATTEMPTS	29	MACU (11/10/17)
	28	OLD DOMINION (1/11/18)
3 PT FG PERCENTAGE	.565 (13-23)	at FIU (02/08/18)
	.556 (10-18)	CHARLOTTE (1/13/18)
FREE THROWS MADE	22	at Eastern Illinois (12/20/17)
	20	at Old Dominion (02/22/18)
FREE THROW ATTEMPTS	30	at Eastern Illinois (12/20/17)
	26	at UTSA (2/2/18)
FREE THROW PERCENTA	.870 (20-23)	at Old Dominion (02/22/18)
	.842 (16-19)	WESTERN KENTUCKY (1/26/18)
REBOUNDS	48	MACU (11/10/17)
	43	at FIU (02/08/18)
	42	TULSA (12/2/17)
ASSISTS	27	at FIU (02/08/18)
	20	CHARLOTTE (1/13/18)
	20	at UIC (12/18/17)
STEALS	17	TEXAS A&M INTERNATIONAL (11/14/17)
	15	OKLAHOMA PANHANDLE ST. UNIV. (12/30/17)
	15	LA SALLE (12/09/17)
BLOCKED SHOTS	7	at Old Dominion (02/22/18)
	7	OKLAHOMA PANHANDLE ST. UNIV. (12/30/17)
TURNOVERS	22	at Eastern Illinois (12/20/17)
	21	WESTERN KENTUCKY (1/26/18)
FOULS	28	at UTSA (2/2/18)
	27	vs DETROIT (11/24/17)

## 2017-18 Starters

<b>GAME</b>	<b>1</b>	<b>2</b>	<b>3</b>	<b>4</b>	<b>5</b>	<b>RESULT</b>
vs. TWU (exhibition)	Smith	Goodhart	Holmes	Bradley	Buckner	W, 69-66
vs. MACU	Smith	Goodhart	Holmes	Bradley	Buckner	W, 86-52
vs. Texas A&M Int'l	Mims	Goodhart	Holmes	Bradley	Buckner	W, 64-38
vs. K-State	Mims	Goodhart	Holmes	Bradley	Buckner	L, 55-54
vs. Coastal Carolina	Mims	Goodhart	Holmes	Bradley	Buckner	W, 50-34
vs. Detroit Mercy	Mims	Goodhart	Holmes	Bradley	Buckner	W, 63-57
vs. SMU	Smith	Mims	Holmes	Bradley	Buckner	W, 47-40
vs. Tulsa	Smith	Mims	Holmes	Bradley	Buckner	W, 66-43
at Indiana	Smith	Mims	Holmes	Bradley	Buckner	L, 68-63
vs. La Salle	Smith	Mims	Holmes	Bradley	Buckner	W, 70-44
at UIC	Smith	Mims	Holmes	Bradley	Buckner	L, 70-67
at Eastern Illinois	Smith	Mims	Goodhart	Bradley	Buckner	W, 63-61 (ot)
vs. Okla. Panhandle St. Univ.	Smith	Mims	Holmes	Bradley	Buckner	W, 63-41
at LA Tech	Smith	Mims	Holmes	Bradley	Buckner	L, 61-53
vs. Rice	Smith	Goodhart	Holmes	Bradley	Buckner	L, 50-49
vs. Old Dominion	Smith	Goodhart	Holmes	Bradley	Buckner	W, 64-46
vs. Charlotte	Smith	Goodhart	Holmes	Bradley	Buckner	W, 73-68
at Middle Tennessee	Smith	Goodhart	Holmes	Bradley	Buckner	L, 56-48
at UAB	Smith	Goodhart	Holmes	Bradley	Buckner	L, 68-52
vs. WKU	Smith	Mims	Bradley	Poland	Buckner	L, 79-65
vs. UTEP	Smith	Mims	Bradley	Poland	Buckner	L, 50-48
at UTSA	Smith	Mims	Bradley	Poland	Buckner	L, 70-58
at FIU	Smith	Mims	Goodhart	Bradley	Buckner	W, 92-46
at FAU	Smith	Mims	Goodhart	Bradley	Buckner	W, 65-51
vs. Southern Miss	Smith	Mims	Goodhart	Bradley	Buckner	W, 71-62
at Old Dominion	Smith	Mims	Goodhart	Bradley	Buckner	W, 55-52
vs. Marshall	Smith	Mims	Goodhart	Bradley	Buckner	L, 62-53
vs. UAB	Smith	Mims	Goodhart	Bradley	Buckner	L, 69-51
at Rice	Smith	Mims	Goodhart	Bradley	Buckner	L, 47-45
vs. Charlotte	Smith	Mims	Goodhart	Bradley	Buckner	W, 58-55

### STARTING 5 STATS

<b>1</b>	<b>2</b>	<b>3</b>	<b>4</b>	<b>5</b>	<b>NUMBER STARTS</b>	<b>UNT PPG</b>	<b>OPP. PPG</b>	<b>W/L RECORD</b>
Smith	Mims	Goodhart	Bradley	Buckner	9	61.6	56.1	6-3
Smith	Mims	Holmes	Bradley	Buckner	7	61.3	52.4	4-3
Smith	Goodhart	Holmes	Bradley	Buckner	6	61.8	56.7	3-3
Mims	Goodhart	Holmes	Bradley	Buckner	4	57.8	46.0	3-1
Smith	Mims	Bradley	Poland	Buckner	3	56.8	67.2	0-3

# 2017-18 BOX SCORES

## 1 North Texas 86 - Mid-America Christian 52 Denton, TX • 11/10/17

MACU 52 • 3-1

#	Player	Total			Rebounds			PF	TP	A	TO	Blk	Stl	Min
		FG-FGA	3-PT	FT-FTA	Off	Def	Tot							
32	Alexis Shannon	f 5-9	1-3	2-3	0	5	5	0	13	0	2	0	1	30
33	Rebekah Wilson	c 0-0	0-0	0-0	0	3	3	2	0	1	0	0	0	12
03	Jennah Coffman	g 2-13	0-4	0-0	1	3	4	2	4	1	3	0	0	19
20	Nevada Denton	g 1-6	1-5	0-0	0	1	1	0	3	1	1	1	1	19
22	Mykala Flores	g 3-9	2-4	5-7	2	5	7	5	13	1	7	0	2	36
04	ShelbyThraikill	0-0	0-0	0-0	0	1	1	1	0	1	1	0	0	11
10	Chelseah Savage	3-10	3-9	1-2	0	2	2	2	10	2	3	0	0	18
11	Jaidan Alley	1-2	1-2	0-0	0	0	0	0	3	0	0	0	0	8
23	Janaya Hines	0-0	0-0	0-0	0	0	0	1	0	0	1	0	0	8
25	Brittany Thompson	0-1	0-0	2-2	0	0	0	2	2	0	1	0	0	9
30	Jessica Fairley	0-1	0-1	0-0	0	2	2	0	0	1	1	0	0	11
44	Ossyana Ozoani	1-2	0-0	2-2	1	2	3	1	4	0	0	2	0	19
Team					4	1	5							
Totals		16-53	8-28	12-18	8	25	33	16	52	7	21	3	4	200
1st - FG %		3-13	23.1%	2nd: 3-13	23.1%	3rd: 5-15	33.3%	4th: 5-12	41.7%	Game: 16-5	30.2%	Deadball		
3FG %		2-8	25.0%	1-6	16.7%	3-9	33.3%	2-5	40.0%	8-28	28.6%	Rebound		
FT %		2-2	100.0	7-11	63.6%	2-4	50.0%	1-1	100.0	12-1	66.7%	4		

### North Texas 86 • 1-0

#	Player	Total			Rebounds			PF	TP	A	TO	Blk	Stl	Min
		FG-FGA	3-PT	FT-FTA	Off	Def	Tot							
34	BUCKNER, Micayla	f 6-8	0-0	0-2	3	4	7	4	12	0	1	0	0	19
02	GOODHART, Grace	g 4-9	1-4	0-1	0	5	5	2	9	4	1	0	0	29
03	SMITH, Brittany	g 2-5	2-2	2-2	0	1	1	2	8	1	1	0	2	23
23	BRADLEY, Terriell	g 8-13	1-4	1-2	2	4	6	3	18	6	4	0	1	29
33	HOLMES, Lauren	g 6-15	4-10	4-4	5	7	12	2	20	1	1	0	3	33
10	HENDERSON, Adrianna	0-1	0-0	0-0	0	1	1	0	0	1	1	1	1	9
12	POLAND, Jada	4-6	0-1	0-0	1	3	4	1	8	0	2	1	1	17
13	SHILLOW, Orianna	0-7	0-7	0-0	0	0	0	1	0	1	0	0	0	13
21	TERRELL, Deja	0-2	0-1	3-4	2	1	3	1	3	0	1	1	0	11
24	MIMS, Trena	4-6	0-0	0-0	2	3	5	4	8	2	2	0	0	17
Team					2	2	4							
Totals		34-72	8-29	10-15	17	31	48	21	86	15	14	5	8	200
1st - FG %		11-1	57.9%	2nd: 8-20	40.0%	3rd: 8-16	50.0%	4th: 7-17	41.2%	Game: 34-7	47.2%	Deadball		
3FG %		4-8	50.0%	2-6	33.3%	0-5	0.0%	2-10	20.0%	8-29	27.6%	Rebound		
FT %		2-3	66.7%	3-4	75.0%	2-3	66.7%	3-5	60.0%	10-1	66.7%	1		

Officials: Shandra Twine, Marleah Vidal, Blanca Burns  
Technical fouls: MACU-None. North Texas-None.  
Attendance: 1007  
2017-18 Season Opener

## 2 North Texas 64 - Texas A&M Int'l 52 Denton, TX • 11/14/17

Texas A&M International 38 • 0-3

#	Player	Total			Rebounds			PF	TP	A	TO	Blk	Stl	Min
		FG-FGA	3-PT	FT-FTA	Off	Def	Tot							
11	Julia Hanni	f 0-3	0-0	2-4	2	1	3	4	2	2	3	0	0	25
22	Veshae A. Wilkinson	f 3-8	1-2	1-2	1	2	3	2	8	1	2	0	3	25
01	Tantasha Giger	g 3-10	2-5	0-0	2	4	6	3	8	3	7	1	0	34
05	Passionate Amukamara	g 2-8	2-7	2-2	2	2	4	4	8	1	6	0	0	28
21	Ashley Perez	g 0-3	0-2	0-0	0	5	5	0	0	1	0	0	0	26
02	Dannia Gonzalez	2-3	0-0	2-2	1	5	6	3	6	0	1	0	0	13
04	Renee Contreras	0-2	0-0	0-0	0	2	2	0	0	0	1	0	1	12
12	LaShae Rolle	0-5	0-0	0-0	1	1	2	1	0	0	4	0	0	13
30	Jaden Gonzales	1-3	1-3	3-4	0	1	1	2	6	0	2	0	2	19
32	Vanessa Oyola	0-1	0-1	0-0	0	0	0	0	0	1	0	0	0	5
Team					4	0	4							
Totals		11-46	6-20	10-14	13	23	36	19	38	9	27	1	7	200
1st - FG %		6-14	42.9%	2nd: 2-11	18.2%	3rd: 1-10	10.0%	4th: 2-11	18.2%	Game: 11-4	23.9%	Deadball		
3FG %		3-4	75.0%	2-6	33.3%	0-6	0.0%	1-4	25.0%	6-20	30.0%	Rebound		
FT %		0-0	0.0%	4-6	66.7%	3-4	75.0%	3-4	75.0%	10-1	71.4%	2		

### North Texas 64 • 2-0

#	Player	Total			Rebounds			PF	TP	A	TO	Blk	Stl	Min
		FG-FGA	3-PT	FT-FTA	Off	Def	Tot							
04	BUCKNER, Micayla	f 9-11	0-0	2-5	2	7	9	1	20	0	2	3	2	30
32	GOODHART, Grace	g 3-9	1-7	2-2	0	2	2	2	9	3	5	0	4	30
23	BRADLEY, Terriell	g 4-14	0-1	0-0	3	0	3	4	8	2	0	0	1	39
24	MIMS, Trena	g 4-10	0-1	0-1	0	3	3	3	8	2	2	0	2	33
33	HOLMES, Lauren	g 4-8	0-3	0-0	3	2	5	2	8	1	2	0	4	29
10	HENDERSON, Adrianna	1-3	0-1	1-2	1	2	3	1	3	0	1	0	0	13
12	POLAND, Jada	0-2	0-0	1-2	2	6	8	3	1	2	0	1	3	26
13	SHILLOW, Orianna	0-0	0-0	0-0	0	0	0	1	0	0	0	0	1	6
21	TERRELL, Deja	2-5	0-0	3-5	5	2	7	2	7	1	2	0	0	14
Team					0	0	0							
Totals		27-62	1-13	9-17	16	24	40	19	64	11	14	4	17	200
1st - FG %		8-17	47.1%	2nd: 2-15	13.3%	3rd: 7-14	50.0%	4th: 10-1	62.5%	Game: 27-6	43.5%	Deadball		
3FG %		0-2	0.0%	1-6	16.7%	0-3	0.0%	0-2	0.0%	1-13	7.7%	Rebound		
FT %		1-3	33.3%	5-8	62.5%	1-3	33.3%	2-3	66.7%	9-17	52.9%	4		

Officials: BILL LARANCE, METTA ROBERTS, ROCHELLE BENNETT  
Technical fouls: Texas A&M International-None. North Texas-None.  
Attendance: 807  
FIRST TIME TAMI AND UNT HAVE PLAYED IN WBB

## 3 Kansas State 55- North Texas 54 Denton, TX • 11/19/17

K-State 55 • 4-0

#	Player	Total			Rebounds			PF	TP	A	TO	Blk	Stl	Min
		FG-FGA	3-PT	FT-FTA	Off	Def	Tot							
01	Page, Kaylee	f 3-8	1-4	4-5	1	2	3	0	11	1	0	1	0	32
11	Williams, Peyton	f 2-8	1-2	4-5	1	6	7	2	9	0	3	2	0	31
10	Goth, Kayla	g 4-8	0-1	3-6	0	4	4	3	11	5	2	0	2	36
12	Ranke, Rachel	g 5-14	4-10	0-0	1	3	4	1	14	0	1	0	3	34
50	Martin, Shaelyn	g 1-5	0-0	0-0	1	2	3	2	2	3	3	1	2	33
02	Goodrich, Cymone	1-4	0-0	0-0	0	2	2	1	2	1	1	0	1	20
33	Ray, Ashley	2-3	0-0	0-0	0	1	1	1	4	0	1	1	0	8
40	Lakes, Mary	0-0	0-0	2-4	2	1	3	1	2	0	1	1	0	6
Team					1	5	6							
Totals		18-50	6-17	13-20	7	26	33	11	55	10	12	6	8	200
1st - FG %		4-12	33.3%	2nd: 6-13	46.2%	3rd: 2-15	13.3%	4th: 6-10	60.0%	Game: 18-5	36.0%	Deadball		
3FG %		2-3	66.7%	1-4	25.0%	0-4	0.0%	3-6	50.0%	6-17	35.3%	Rebound		
FT %		1-2	50.0%	4-6	66.7%	4-4	100.0	4-8	50.0%	13-2	65.0%	3		

### North Texas 54 • 2-1

#	Player	Total			Rebounds			PF	TP	A	TO	Blk	Stl	Min
		FG-FGA	3-PT	FT-FTA	Off	Def	Tot							
34	BUCKNER, Micayla	f 3-10	0-1	0-0	3	7	10	1	6	1	2	4	0	34
02	GOODHART, Grace	g 1-2	1-2	0-0	0	0	0	4	3	0	1	0	0	16
23	BRADLEY, Terriell	g 6-12	2-2	1-2	1	2	3	2	15	2	2	0	3	39
24	MIMS, Trena	g 5-11	1-1	0-0	1	1	2	4	11	4	2	0	0	30
33	HOLMES, Lauren	g 3-9	2-7	0-0	1	6	7	4	8	0	1	1	2	25
10	HENDERSON, Adrianna	2-5	1-2	0-0	0	1	1	5	5	1	3	0	1	20
12	POLAND, Jada	1-2	0-0	0-0	0	8	8	3	2	0	1	0	0	22
21	TERRELL, Deja	2-4												



# 2017-18 BOX SCORES

## 5 North Texas 63 - Detroit Mercy 57 Daytona Beach, FL • 11/24/17

**DETROIT 57 • 0-5**

#	Player	Total			3-Ptr			Rebounds			PF	TP	A	TO	Blk	Stl	Min
		FG-FGA	FG-FGA	FT-FTA	FG-FGA	FG-FGA	FT-FTA	Off	Def	Tot							
02	BROWN, Kayla	* 2-7	1-2	2-4	0	1	1	1	7	1	2	0	0	0	19		
05	MARINKOVIC, Anja	* 5-11	4-7	2-4	1	1	2	3	16	0	2	0	1	21			
11	TOBEL, Lexey	* 1-4	0-3	0-0	1	6	7	4	2	0	2	0	0	24			
20	URBANICK, Nicole	* 0-5	0-4	1-2	1	8	9	3	1	2	2	0	1	37			
23	COHEN, Brienne	* 4-9	1-2	12-13	2	4	6	4	21	2	6	1	1	29			
01	MILLER, Ashley	1-3	0-0	0-0	3	1	4	3	2	0	1	1	0	11			
03	RISTOVSKI, Lola	0-2	0-2	0-0	0	1	1	2	0	2	1	0	0	13			
10	JACKSON, Brittney	2-3	1-1	1-4	0	3	3	2	6	0	2	0	0	26			
22	OATIS, Zoey	1-1	0-0	0-2	0	2	2	3	2	0	2	0	0	20			
Team					3	3	6										
Totals		16-45	7-21	18-29	11	30	41	25	57	7	20	2	3	200			

1st - FG % 3-11 27.3% 2nd: 7-14 50.0% 3rd: 3-12 25.0% 4th: 3-8 37.5% Game: 16-4 35.6% Deadball  
3FG %: 1-6 16.7% 3-5 60.0% 1-7 14.3% 2-3 66.7% 7-21 33.3% Rebound  
FT %: 6-9 66.7% 1-4 25.0% 2-4 50.0% 9-12 75.0% 18-2 62.1%

### North Texas 63 • 4-1

#	Player	Total			3-Ptr			Rebounds			PF	TP	A	TO	Blk	Stl	Min
		FG-FGA	FG-FGA	FT-FTA	FG-FGA	FG-FGA	FT-FTA	Off	Def	Tot							
02	GOODHART, Grace	* 2-6	1-4	0-0	0	3	3	0	5	0	0	0	0	0	10		
23	BRADLEY, Terriell	* 6-12	0-2	10-11	1	7	8	3	22	0	2	0	3	38			
24	MIMS, Trena	* 0-4	0-2	2-2	0	2	2	3	2	0	0	0	0	34			
23	HOLMES, Lauren	* 7-14	3-7	2-2	2	2	4	2	19	1	1	0	3	24			
34	BUCKNER, Micayla	* 1-5	0-0	0-0	0	3	3	4	2	0	2	0	0	20			
03	SMITH, Brittany	0-4	0-0	4-6	1	1	2	5	4	6	1	1	1	29			
10	HENDERSON, Adrianna	4-11	0-2	1-1	2	2	4	3	9	0	2	0	1	22			
12	POLAND, Jada	0-4	0-0	0-2	3	1	4	4	0	0	2	0	0	16			
13	SHILLOW, Orianna	0-0	0-0	0-0	0	0	0	0	0	0	0	0	0	0+4			
21	TERRELL, Deja	0-3	0-0	0-0	4	0	4	3	0	0	1	1	1	7			
Team					3	3	6										
Totals		20-63	4-17	19-24	16	24	40	27	63	7	11	2	9	200			

1st - FG % 4-17 23.5% 2nd: 8-19 42.1% 3rd: 3-13 23.1% 4th: 5-14 35.7% Game: 20-6 31.7% Deadball  
3FG %: 1-4 25.0% 2-5 40.0% 0-4 0.0% 1-4 25.0% 4-17 23.5% Rebound  
FT %: 4-5 80.0% 3-3 100.0% 8-8 100.0% 4-8 50.0% 19-2 79.2%

Officials: MARK BERGER/ BRYAN NICHOLS/ CALVIN GARTH  
Technical fouls: DETROIT-None. North Texas-None.

## 6 North Texas 47 - SMU 40 Denton, TX • 11/29/17

**SMU 40 • 3-5**

#	Player	Total			3-Ptr			Rebounds			PF	TP	A	TO	Blk	Stl	Min
		FG-FGA	FG-FGA	FT-FTA	FG-FGA	FG-FGA	FT-FTA	Off	Def	Tot							
13	BRADSHAW, Klara	f 2-6	0-0	2-2	0	2	2	1	6	0	2	3	0	21			
00	PERRY, Kiara	g 0-5	0-1	3-6	2	6	8	2	3	3	4	0	1	35			
02	WHITFIELD, Ariana	g 1-5	1-3	0-0	3	2	5	1	3	0	2	1	2	31			
03	ADAMS, McKenzie	g 5-16	0-1	5-6	0	3	3	4	15	0	5	0	4	37			
04	REESE, Mikayla	g 0-3	0-1	0-0	0	0	0	4	0	0	3	0	1	15			
12	SMITH, Morgan	0-1	0-1	0-0	0	0	0	0	0	0	1	0	0	3			
15	COLLINS, Stephanie	3-4	0-0	0-1	3	7	10	1	6	0	2	0	0	19			
20	THOMAS, Dai'ja	2-4	0-0	3-5	4	6	10	2	7	2	1	0	1	30			
33	CASH, Johnasia	0-1	0-0	0-0	0	3	3	2	0	0	3	0	1	9			
Team					1	1	2										
Totals		13-45	1-7	13-20	13	30	43	17	40	5	24	4	10	200			

1st - FG % 2-9 22.2% 2nd: 5-16 31.3% 3rd: 1-8 12.5% 4th: 5-12 41.7% Game: 13-4 28.9% Deadball  
3FG %: 0-2 0.0% 1-3 33.3% 0-0 0.0% 1-7 14.3% Rebound  
FT %: 1-2 50.0% 0-2 0.0% 9-12 75.0% 3-4 75.0% 13-2 65.0%

### North Texas 47 • 5-1

#	Player	Total			3-Ptr			Rebounds			PF	TP	A	TO	Blk	Stl	Min
		FG-FGA	FG-FGA	FT-FTA	FG-FGA	FG-FGA	FT-FTA	Off	Def	Tot							
34	BUCKNER, Micayla	f 5-9	0-0	0-2	0	11	11	4	10	0	0	0	0	32			
03	SMITH, Brittany	g 3-5	1-2	2-2	0	4	4	2	9	1	4	0	0	30			
23	BRADLEY, Terriell	g 3-14	0-5	5-5	3	2	5	3	11	1	1	0	1	37			
24	MIMS, Trena	g 2-5	0-0	0-2	3	1	4	1	4	2	0	2	2	29			
23	HOLMES, Lauren	g 1-13	1-9	0-0	0	0	0	1	3	1	0	1	1	37			
02	GOODHART, Grace	g 2-2	1-1	0-0	0	0	0	2	5	0	2	1	0	10			
10	HENDERSON, Adrianna	1-3	1-3	0-0	0	1	1	0	3	0	1	0	1	7			
12	POLAND, Jada	0-2	0-0	0-0	1	2	3	2	0	0	1	0	0	12			
21	TERRELL, Deja	1-3	0-1	0-1	0	0	0	3	2	0	0	0	0	6			
Team					4	1	5										
Totals		18-56	4-21	7-12	11	22	33	18	47	7	12	2	5	200			

1st - FG % 4-16 25.0% 2nd: 5-14 35.7% 3rd: 3-16 18.8% 4th: 6-10 60.0% Game: 18-5 32.1% Deadball  
3FG %: 1-5 20.0% 2-6 33.3% 0-6 0.0% 1-4 25.0% 4-21 19.0% Rebound  
FT %: 2-4 50.0% 0-0 0.0% 0-0 0.0% 5-8 62.5% 7-12 58.3%

Officials: Scott Yarbrough, Brian Hall, Metta Roberts  
Technical fouls: SMU-None. North Texas-None.  
Attendance: 3243

## 7 North Texas 66 - Tulsa 43 Denton, TX • 12/2/17

**Tulsa 43 • 3-5**

#	Player	Total			3-Ptr			Rebounds			PF	TP	A	TO	Blk	Stl	Min
		FG-FGA	FG-FGA	FT-FTA	FG-FGA	FG-FGA	FT-FTA	Off	Def	Tot							
00	ELLIOTT, Kendrian	f 2-4	0-0	2-4	2	3	5	3	6	0	3	1	0	16			
02	PEREZ, Tatyana	g 3-9	2-3	0-0	1	2	3	0	8	0	3	0	1	28			
03	WAKEFIELD, Erika	g 0-7	0-0	0-0	4	0	4	3	0	1	0	0	1	25			
10	GAULDEN, Alexis	g 2-3	1-2	4-6	0	2	5	9	1	6	0	1	30				
21	LESCAY, Rebecca	g 2-5	0-0	0-0	1	2	3	2	4	0	2	0	1	27			
04	RICHARDS, Addison	0-2	0-2	0-0	0	0	0	2	0	0	0	0	0	9			
05	BUTLER, Jasmine	0-1	0-0	5-6	2	0	2	0	5	1	0	0	0	6			
22	BRADY, Morgan	0-2	0-1	0-0	0	1	1	3	0	0	1	0	0	20			
25	SCALES, Tyjae'	0-0	0-0	1-2	0	0	0	1	1	0	0	0	0	8			
30	VORNES, Krystan	0-4	0-0	5-6	3	5	8	3	5	0	1	0	0	15			
33	POLK, Crystal	2-7	0-0	1-2	0	1	1	1	5	1	1	0	0	16			
Team					2	4	6										
Totals		11-44	3-8	18-26	15	20	35	23	43	4	18	1	4	200			

1st - FG % 3-9 33.3% 2nd: 3-10 30.0% 3rd: 4-14 28.6% 4th: 1-11 9.1% Game: 11-4 25.0% Deadball  
3FG %: 3-3 100.0% 0-2 0.0% 0-1 0.0% 0-2 0.0% 3-8 37.5% Rebound  
FT %: 3-4 75.0% 4-6 66.7% 2-4 50.0% 9-12 75.0% 18-2 69.2%

### North Texas 66 • 6-1

#	Player	Total			3-Ptr			Rebounds			PF	TP	A	TO	Blk	Stl	Min
		FG-FGA	FG-FGA	FT-FTA	FG-FGA	FG-FGA	FT-FTA	Off	Def	Tot							
34	BUCKNER, Micayla	f 2-5	0-0	2-2	2	2	4	4	6	0	2	1	0	18			
03	SMITH, Brittany	g 2-4	1-2	1-2	0	2	3	6	3	2	0	1	0	26			
23	BRADLEY, Terriell	g 8-13	3-5	4-5	2	2	4	2	23	3	2	1	0	30			
24	MIMS, Trena	g 5-8	0-0	5-9	1	1	2	4	15	1	0	0	1	34			
33	HOLMES, Lauren	g 4-18	3-12	0-0	3	4	7	1	11	0	1	2	2	30			
02	GOODHART, Grace	0-3	0-2	0-0	0	3	3	1	0	2	1	0	1	20			
10	HENDERSON, Adrianna	0-1	0-1	1-2	3	2	5	2	1	1	1	0	0	15			
12	POLAND, Jada	0-1	0-0	1-2	1	3	4	3	1	0	2	0	0	13			
13	SHILLOW, Orianna	0-1	0-1	0-0	0	0	0	0	0	0	0	0	0	2			
21	TERRELL, Deja	1-1	0-0	1-2	2	2	4	4	3	0	1	0	0	12			
Team					4	3	7										
Totals		22-55	7-23	15-24	18	24	42	24	66	10	12	4	5	200			

1st - FG % 5-12 41.7% 2nd: 5-13 38.5% 3rd: 4-16 25.0% 4th: 8-14 57.1% Game: 22-5 40.0% Deadball  
3FG %: 3-5 60.0% 2-7 28.6% 0-4 0.0% 0-4 0.0% 7-23 30.4% Rebound  
FT %: 2-4 50.0% 4-9 44.4% 3-4 75.0% 6-7 85.7% 15-2 62.5%

Officials: Brian Garland, Bill Larence, Chaney Muench  
Technical fouls: Tulsa-None. North Texas-None.  
Attendance: 1181  
LAST TIME THESE SCHOOLS MET WAS DEC. 3, 2017

## 8 Indiana 68 - North Texas 63 Bloomington, Ind. • 12/5/17

**North Texas 63 • 6-2**

#</
-----

# 2017-18 BOX SCORES

9

North Texas 70 - La Salle 44  
Denton, TX • 12/9/17

La Salle 44 • 4-6

#	Player	Total			3-Ptr			Rebounds			PF	TP	A	TO	Blk	Stl	Min
		FG-FGA	FG-FGA	FT-FTA	FG-FGA	FG-FGA	FT-FTA	Off	Def	Tot							
25	MILLER, Shalina	f	4-9	0-0	0-0	2	5	7	2	8	1	5	3	1	28		
44	FREELAND, Ashanti	f	3-3	0-0	1-2	2	3	5	2	7	0	3	1	0	35		
01	EDWARDS, Shaquana	g	1-4	0-0	0-0	0	2	2	0	2	1	2	0	1	22		
15	MILLER, Adreana	g	0-3	0-1	0-0	0	0	0	3	0	0	3	0	0	8		
21	GRIFFIN, Amy	g	5-18	0-4	2-2	0	8	8	3	12	3	7	2	1	40		
11	KING, Deja		3-6	0-0	1-1	0	2	2	3	7	2	3	1	2	31		
14	NICHOLLS, Michelle		0-1	0-0	0-0	0	0	0	1	0	1	2	1	0	19		
22	REESE, Jeryn		1-1	0-0	0-0	1	1	2	0	2	0	1	0	0	5		
35	NGWAFANG, Sofilia		2-2	0-0	2-4	3	3	6	3	6	0	1	1	0	12		
Team			1	3	4												
Totals			19-47	0-5	6-9	9	27	36	17	44	8	27	9	5	200		

1st - FG % 5-11 45.5% 2nd: 4-12 33.3% 3rd: 3-10 30.0% 4th: 7-14 50.0% Game: 19-4 40.4% Deadball Rebound 2  
3FG %: 0-2 0.0% 0-0 0.0% 0-2 0.0% 0-1 0.0% 0-5 0.0%  
FT %: 1-1 100.0 2-2 100.0 3-6 50.0% 0-0 0.0% 6-9 66.7%

North Texas 70 • 7-2

#	Player	Total			3-Ptr			Rebounds			PF	TP	A	TO	Blk	Stl	Min
		FG-FGA	FG-FGA	FT-FTA	FG-FGA	FG-FGA	FT-FTA	Off	Def	Tot							
34	BUCKNER, Micayla	f	5-13	0-1	0-0	3	3	6	2	10	1	2	0	2	24		
03	SMITH, Brittany	g	3-7	1-2	4-4	0	1	1	2	11	3	2	1	2	28		
23	BRADLEY, Terriell	g	3-10	1-2	1-2	2	5	7	1	8	2	2	0	2	30		
24	MIMS, Trena	g	3-6	0-0	1-2	1	2	3	1	7	3	3	0	1	27		
33	HOLMES, Lauren	g	6-14	3-7	2-2	3	2	5	1	17	1	0	0	5	30		
02	GOODHART, Grace		2-4	1-2	0-0	0	0	0	1	5	1	0	0	0	18		
10	HENDERSON, Adrianna		0-4	0-0	4-4	4	1	5	1	4	0	0	0	2	18		
12	POLAND, Jada		0-2	0-0	3-4	0	3	3	1	3	0	0	0	0	7		
13	SHILLOW, Orianna		0-1	0-1	0-0	0	0	0	0	0	0	0	0	0	2		
21	TERRELL, Deja		2-5	0-1	1-4	2	0	2	3	5	0	2	0	1	16		
Team			2	3	5												
Totals			24-66	6-16	16-22	17	20	37	13	70	11	11	1	15	200		

1st - FG % 8-16 50.0% 2nd: 7-19 36.8% 3rd: 6-16 37.5% 4th: 3-15 20.0% Game: 24-6 36.4% Deadball Rebound 4  
3FG %: 2-5 40.0% 1-2 50.0% 2-4 50.0% 1-5 20.0% 6-16 37.5%  
FT %: 2-6 33.3% 3-4 75.0% 5-6 83.3% 6-6 100.0% 16-2 72.7%

Officials: Metta Roberts, Travis Jones, Marleah Vidal  
Technical fouls: La Salle-None. North Texas-None.  
Attendance: 996

10

UIC 70 - North Texas 67  
Chicago, IL • 12/18/17

North Texas 67 • 7-3

#	Player	Total			3-Ptr			Rebounds			PF	TP	A	TO	Blk	Stl	Min
		FG-FGA	FG-FGA	FT-FTA	FG-FGA	FG-FGA	FT-FTA	Off	Def	Tot							
34	BUCKNER, Micayla	f	7-11	0-0	0-2	1	7	8	5	14	1	3	4	3	37		
23	BRADLEY, Terriell	g	7-15	4-7	9-10	2	7	9	5	27	6	3	1	1	36		
24	MIMS, Trena	g	1-4	0-1	0-0	1	3	4	5	2	3	3	0	0	18		
3	SMITH, Brittany	g	2-6	0-2	0-2	0	1	1	4	4	6	4	0	1	29		
33	HOLMES, Lauren	g	4-7	1-3	4-4	2	1	3	3	13	2	1	1	1	34		
10	HENDERSON, Adrianna		0-0	0-0	0-0	0	0	0	0	0	0	0	0	0	2		
12	POLAND, Jada		0-2	0-1	0-0	2	1	3	2	0	0	0	0	0	5		
13	SHILLOW, Orianna		0-0	0-0	0-0	0	0	0	0	0	0	0	0	0	0+		
2	GOODHART, Grace		3-6	1-4	0-0	0	2	2	1	7	2	3	0	3	33		
21	TERRELL, Deja		0-0	0-0	0-0	1	0	1	1	0	0	0	0	0	6		
Team			2	2	4												
Totals			24-51	6-18	13-18	11	24	35	26	67	20	18	6	9	200		

1st - FG % 8-11 72.7% 2nd: 6-15 40.0% 3rd: 6-10 60.0% 4th: 4-15 26.7% Game: 24-5 47.1% Deadball Rebound 3  
3FG %: 2-5 40.0% 4-8 50.0% 0-2 0.0% 0-3 0.0% 6-18 33.3%  
FT %: 2-3 66.7% 3-5 60.0% 4-6 66.7% 0-4 100.0% 13-1 72.2%

UIC 70 • 7-3

#	Player	Total			3-Ptr			Rebounds			PF	TP	A	TO	Blk	Stl	Min
		FG-FGA	FG-FGA	FT-FTA	FG-FGA	FG-FGA	FT-FTA	Off	Def	Tot							
30	JOHNSON, Gabryelle	f	6-8	0-0	5-8	6	6	12	5	17	0	1	0	2	38		
44	ZAGORAC, Teodora	c	0-4	0-3	0-0	1	1	2	0	0	0	0	0	0	20		
20	ETHERIDGE, Catera	g	1-4	0-0	0-0	0	2	2	2	2	2	2	0	0	25		
3	BYRD, Brittany	g	8-20	4-11	4-9	2	2	4	1	24	5	3	0	1	40		
5	TONEY, Taylor	g	3-7	1-1	3-4	1	3	4	10	4	2	0	0	25			
10	TEDFORD, Tia		2-3	1-2	0-0	0	1	1	1	5	1	2	0	1	15		
14	NNEJI, Jada		1-1	0-0	0-0	1	0	1	1	2	0	0	0	0	1		
22	LAKE, Abreanna		0-1	0-0	0-0	0	0	0	1	0	1	2	0	1	9		
35	LAMPLEY, Tylah		5-11	0-1	0-1	1	2	3	2	10	5	2	1	1	27		
Team			4	1	5												
Totals			26-59	6-18	12-22	16	18	34	17	70	18	14	1	6	200		

1st - FG % 9-18 50.0% 2nd: 4-12 33.3% 3rd: 6-13 46.2% 4th: 7-16 43.8% Game: 26-5 44.1% Deadball Rebound 3  
3FG %: 3-8 37.5% 0-0 0.0% 2-6 33.3% 1-4 25.0% 6-18 33.3%  
FT %: 0-0 0.0% 1-4 25.0% 5-6 83.3% 6-12 50.0% 12-2 54.5%

Officials: Bob Enterline, Dorrin Stewart, Erin Frias  
Technical fouls: North Texas-BRADLEY, Terriell. UIC-None.  
Attendance: 249

11

North Texas 63 - Eastern Illinois 61 (OT)  
Charleston, IL • 12/20/17

North Texas 63 • 8-3

#	Player	Total			3-Ptr			Rebounds			PF	TP	A	TO	Blk	Stl	Min
		FG-FGA	FG-FGA	FT-FTA	FG-FGA	FG-FGA	FT-FTA	Off	Def	Tot							
34	BUCKNER, Micayla	f	2-4	0-0	2-4	3	6	9	3	6	0	5	0	3	29		
02	GOODHART, Grace	g	4-11	3-6	5-5	0	3	3	2	16	0	4	1	1	45		
03	SMITH, Brittany	g	2-7	0-2	2-4	4	6	10	5	6	1	5	0	0	35		
23	BRADLEY, Terriell	g	7-18	0-4	7-9	2	6	8	2	21	4	4	0	5	45		
24	MIMS, Trena	g	2-5	0-1	3-4	1	2	3	3	7	0	3	0	2	32		
12	POLAND, Jada		1-1	0-0	0-0	0	0	0	2	2	1	0	1	0	9		
13	SHILLOW, Orianna		0-3	0-3	2-2	0	0	0	1	2	0	0	0	0	21		
21	TERRELL, Deja		1-2	0-0	1-2	1	1	2	1	3	1	0	0	0	9		
Team			1	2	3												
Totals			19-51	3-16	22-30	12	26	38	19	63	7	22	2	11	225		

1st - FG % 5-11 45.5% 2nd: 2-13 15.4% 3rd: 4-11 36.4% 4th: 5-11 45.5% Game: 19-5 37.3% Deadball Rebound 5  
3FG %: 1-4 25.0% 1-4 25.0% 1-5 20.0% 0-2 0.0% 3-16 18.8%  
FT %: 2-7 28.6% 2-2 100.0 11-1 100.0 5-8 62.5% 22-3 73.3%

Eastern Illinois 61 • 1-9

#	Player	Total			3-Ptr			Rebounds			PF	TP	A	TO	Blk	Stl	Min
		FG-FGA	FG-FGA	FT-FTA	FG-FGA	FG-FGA	FT-FTA	Off	Def	Tot							
14	McRAE, Grace	f	3-5	0-0	0-0	2	0	2	2	6	0	2	0	2	29		
32	NEHLS, Jennifer	f	1-8	0-5	2-4	0	2	2	3	4	2	4	0	2	39		
12	TELLEZ, Carmen	g	2-11	2-8	0-0	2	5	4	6	4	4	0	1	37			
15	STEELE, Taylor	g	7-10	3-5	4-6	0	5	5	3	21	3	4	0	1	45		
20	BERRY, Danielle	g	2-9	1-6	2-2	2	4	6	4	7	4	3	0	5	43		
11	PACE, Karle		0-0	0-0	0-0	2	2	2	2	0	0	3	0	1	5		
21	STULL, Halle		6-9	3-6	1-2	2	4	6	1	16	0	2	1	1	25		
31	SMITH, Jalisha		0-0	0-0	1-2	0	0	0	2	1	1	0	0	0	2		
Team			1	3	4												
Totals			21-52	9-30	10-16	9	23	32	21	61	14	22	1	13	225		

1st - FG % 3-12 25.0% 2nd: 6-12 50.0% 3rd: 5-10 50.0% 4th: 5-14 35.7% Game: 21-5 40.4% Deadball Rebound 2  
3FG %: 1-8 12.5% 3-7 42.9% 3-8 37.5% 2-6 33.3% 9-30 30.0%  
FT %: 2-4 50.0% 0-0 0.0% 3-4 75.0% 3-6 50.0% 10-1 62.5%

Officials: Jeff Cross, Shane Bennett, Brad Maxey  
Technical fouls: North Texas-None. Eastern Illinois-None.  
Attendance: 287

12

North Texas 63 - Oklahoma

# 2017-18 BOX SCORES

## 13

LA Tech 61 - North Texas 53  
Ruston, LA • 1/3/18

North Texas 53 • 9-4 (0-1)

#	Player	Total			3-Ptr			Rebounds			PF	TP	A	TO	Blk	Stl	Min
		FG-FGA	FG-FGA	FT-FTA	FG-FGA	FG-FGA	FT-FTA	Off	Def	Tot							
03	SMITH, Brittany	* 1-2	0-0	3-4	0	2	2	4	5	7	4	0	1	32			
23	BRADLEY, Terriell	* 8-20	3-9	4-5	2	3	5	0	23	2	3	0	2	39			
24	MIMS, Trena	* 2-4	0-0	0-0	0	1	1	0	4	0	1	1	0	28			
33	HOLMES, Lauren	* 1-15	1-7	2-2	3	1	4	4	5	1	0	1	3	36			
34	BUCKNER, Micayla	* 5-10	0-0	0-2	4	8	12	3	10	0	2	3	1	36			
02	GOODHART, Grace	1-3	0-1	1-2	0	4	4	4	3	1	2	0	1	18			
10	HENDERSON, Adrianna	1-2	1-1	0-0	1	1	2	2	3	0	2	0	0	6			
12	POLAND, Jada	0-0	0-0	0-0	0	0	0	0	0	0	0	0	0	1			
21	TERRELL, Deja	0-1	0-0	0-0	0	0	0	4	0	0	0	1	0	4			
Team					3	4	7										
Totals		19-57	5-18	10-15	13	24	37	21	53	11	14	6	8	200			

1st - FG % 4-14 28.6% 2nd: 3-12 25.0% 3rd: 7-16 43.8% 4th: 5-15 33.3% Game: 19-53 33.3% Deadball Rebound 4  
 3FG %: 1-4 25.0% 1-4 25.0% 2-5 40.0% 1-5 20.0% 5-18 27.8%  
 FT %: 0-0 0.0% 5-6 83.3% 3-3 100.0% 2-6 33.3% 10-1 66.7%

Louisiana Tech 61 • 10-4 (1-0)

#	Player	Total			3-Ptr			Rebounds			PF	TP	A	TO	Blk	Stl	Min
		FG-FGA	FG-FGA	FT-FTA	FG-FGA	FG-FGA	FT-FTA	Off	Def	Tot							
03	LANG, Kierra	* 0-3	0-2	2-2	0	2	2	0	2	2	2	0	0	35			
04	ANTHONY, Kierra	* 7-15	0-3	4-4	0	6	6	3	18	1	3	0	2	31			
24	STAHLY, Taylor	* 4-7	4-7	2-2	0	1	1	14	2	1	0	0	32				
32	WHITNEY, Zhanee	* 2-5	0-0	1-2	2	4	6	5	5	1	3	0	2	33			
34	MALONE, Alexis	* 7-17	0-0	2-5	6	6	12	3	16	0	2	0	2	24			
10	DIXON, Amber	1-1	0-0	3-4	1	1	2	1	5	4	2	0	0	14			
12	MCCUTCHEON, Daria	0-0	0-0	0-0	2	1	3	0	0	0	0	0	0	12			
14	MCLEOD, Anna	0-1	0-1	0-0	0	1	1	0	0	1	0	0	0	11			
23	CLEAVER, Reauna	0-4	0-0	1-4	0	2	2	0	1	0	1	0	0	8			
Team					2	2	4										
Totals		21-53	4-13	15-23	13	26	39	16	61	11	14	0	6	200			

1st - FG % 6-14 42.9% 2nd: 5-12 41.7% 3rd: 7-13 53.8% 4th: 3-14 21.4% Game: 21-53 39.6% Deadball Rebound 3  
 3FG %: 0-1 0.0% 1-2 50.0% 1-4 25.0% 2-6 33.3% 4-13 30.8%  
 FT %: 2-2 100.0% 8-11 72.7% 1-6 16.7% 4-4 100.0% 15-2 65.2%

Officials: Gina Cross, Carla Fountain, Darren McClure  
 Technical fouls: North Texas-None. Louisiana Tech-None.  
 Attendance: 1749

## 14

Rice 50 - North Texas 49  
Denton, TX • 1/5/18

Rice 50 • 11-2 (1-0)

#	Player	Total			3-Ptr			Rebounds			PF	TP	A	TO	Blk	Stl	Min
		FG-FGA	FG-FGA	FT-FTA	FG-FGA	FG-FGA	FT-FTA	Off	Def	Tot							
22	IADEMARCO, Nicole	f 3-12	3-9	4-6	1	5	6	2	13	1	3	0	1	38			
23	CHRISMAN, Alexah	f 3-3	0-0	0-0	1	3	4	4	6	3	5	1	1	28			
10	KNIGHT, Wendy	g 5-9	3-4	0-0	4	2	6	3	13	1	2	1	2	37			
13	OGWUMIKE, ERICA	g 2-12	0-4	5-8	3	14	17	2	9	1	4	1	0	39			
21	STANTON, Gabrielle	g 2-6	1-5	4-4	0	0	0	2	9	3	2	0	0	33			
02	WIGGINS, Sydne	0-1	0-1	0-0	0	2	2	0	0	0	0	0	0	7			
05	GRIGSBY, Lauren	0-0	0-0	0-0	0	1	1	1	0	0	0	0	1	13			
40	OZOUDE, Gabby	0-0	0-0	0-0	0	0	0	1	0	0	0	0	0	5			
Team					2	0	2										
Totals		15-43	7-23	13-18	11	27	38	15	50	9	19	3	5	200			

1st - FG % 6-11 54.5% 2nd: 1-11 9.1% 3rd: 5-10 50.0% 4th: 3-11 27.3% Game: 15-43 34.9% Deadball Rebound 3  
 3FG %: 3-7 42.9% 1-6 16.7% 1-5 20.0% 2-5 40.0% 7-23 30.4%  
 FT %: 0-0 0.0% 3-4 75.0% 3-4 75.0% 7-10 70.0% 13-1 72.2%

North Texas 49 • 9-5 (0-2)

#	Player	Total			3-Ptr			Rebounds			PF	TP	A	TO	Blk	Stl	Min
		FG-FGA	FG-FGA	FT-FTA	FG-FGA	FG-FGA	FT-FTA	Off	Def	Tot							
34	BUCKNER, Micayla	f 1-6	0-1	0-0	1	2	3	2	2	0	1	2	0	22			
02	GOODHART, Grace	g 1-3	1-3	0-0	0	0	0	3	3	2	2	0	0	19			
03	SMITH, Brittany	g 1-6	0-0	1-2	2	3	5	3	3	3	0	0	0	34			
23	BRADLEY, Terriell	g 2-12	0-3	9-10	3	4	7	4	13	2	1	0	1	37			
33	HOLMES, Lauren	g 4-16	3-10	0-0	2	4	3	11	0	0	0	6	34				
10	HENDERSON, Adrianna	1-3	0-1	0-0	1	3	4	0	2	0	0	0	0	9			
12	POLAND, Jada	0-0	0-0	1-2	1	1	1	0	1	0	0	0	0	3			
21	TERRELL, Deja	6-7	0-1	2-4	3	0	4	4	14	0	2	2	17				
24	MIMS, Trena	0-1	0-0	0-0	1	1	2	2	0	0	1	1	0	25			
Team					1	3	4										
Totals		16-54	4-19	13-18	15	19	34	21	49	7	7	5	9	200			

1st - FG % 3-14 21.4% 2nd: 4-14 28.6% 3rd: 3-13 23.1% 4th: 6-13 46.2% Game: 16-54 29.6% Deadball Rebound 1  
 3FG %: 2-5 40.0% 1-4 25.0% 0-5 0.0% 1-5 20.0% 4-19 21.1%  
 FT %: 2-2 100.0% 2-2 100.0% 0-6 66.7% 5-8 62.5% 13-1 72.2%

Officials: Mark Zentz, Susan Blauch, Ashley Gilpin  
 Technical fouls: Rice-OGWUMIKE, ERICA; IADEMARCO, Nicole. North Texas-TERRELL, Deja; BRADLEY, Terriell.  
 Attendance: 1211

## 15

North Texas 63 - Old Dominion 46  
Denton, TX • 1/11/18

Old Dominion 46 • 2-14 (0-3)

#	Player	Total			3-Ptr			Rebounds			PF	TP	A	TO	Blk	Stl	Min
		FG-FGA	FG-FGA	FT-FTA	FG-FGA	FG-FGA	FT-FTA	Off	Def	Tot							
24	BREW, Carley	f 0-1	0-0	0-0	2	8	10	4	0	0	1	1	0	26			
34	OIGBOKIE, Odegua	f 1-7	0-0	4-7	2	0	2	3	6	1	5	0	0	30			
02	TIMMONS, MaKayla	g 6-10	2-5	5-5	0	0	0	2	19	1	3	0	2	37			
05	MORRIS, Victoria	g 0-4	0-2	0-0	0	5	5	3	0	1	3	0	0	39			
30	JACKSON, Ashley	g 3-5	1-1	2-3	0	2	2	4	9	0	5	1	1	20			
00	LOFTUS, Kelly	0-4	0-4	0-0	0	0	0	1	0	0	2	0	0	16			
11	EDWARDS, Taylor	3-4	0-0	1-1	1	2	3	5	7	0	3	0	3	21			
14	CARTER, Dejah	2-2	0-0	0-1	1	0	1	3	4	0	0	0	0	8			
32	HARDEN, Lovie	0-0	0-0	1-2	0	1	1	0	1	0	0	0	0	3			
Team					2	2	4										
Totals		15-37	3-12	13-19	8	20	28	25	46	3	23	2	6	200			

1st - FG % 3-8 37.5% 2nd: 5-10 50.0% 3rd: 3-9 33.3% 4th: 4-10 40.0% Game: 15-37 40.5% Deadball Rebound 2  
 3FG %: 1-4 25.0% 1-1 100.0% 0-2 0.0% 3-12 25.0% 3-12 25.0%  
 FT %: 0-0 0.0% 6-7 85.7% 4-6 66.7% 3-6 50.0% 13-1 68.4%

North Texas 63 • 10-5 (1-2)

#	Player	Total			3-Ptr			Rebounds			PF	TP	A	TO	Blk	Stl	Min
		FG-FGA	FG-FGA	FT-FTA	FG-FGA	FG-FGA	FT-FTA	Off	Def	Tot							
34	BUCKNER, Micayla	f 2-3	0-0	2-2	2	0	2	4	6	0	2	0	1	22			
02	GOODHART, Grace	g 2-9	1-6	0-0	1	2	3	5	1	0	0	2	27				
03	SMITH, Brittany	g 3-9	2-5	0-0	2	1	3	0	8	5	1	0	1	24			
23	BRADLEY, Terriell	g 6-12	4-7	7-9	1	3	4	0	23	3	1	0	0	33			
33	HOLMES, Lauren	g 3-7	2-4	0-0	1	2	3	2	8	0	3	1	0	24			
10	HENDERSON, Adrianna	2-5	1-4	2-2	1	1	2	1	7	0	3	0	2	15			
12	POLAND, Jada	0-1	0-0	5-10	2	3	5	4	5	0	0	0	1	10			
13	SHILLOW, Orianna	0-0	0-0	0-0	0	0	0	0	0	0	0	0	0	2			
21	TERRELL, Deja	0-1	0-1	0-0	0	3	3	0	0	2	1	0	0	15			
24	MIMS, Trena	0-2	0-1	1-2	1	1	2	1	1	1	0	0	0	28			
Team					3	2	5										
Totals		18-49	10-28	17-25	14	18	32	18	63	10	13	2	7	200			

1st - FG % 4-13 30.8% 2nd: 7-14 50.0% 3rd: 4-13 30.8% 4th: 3-9 33.3% Game: 18-49 36.7% Deadball Rebound 5  
 3FG %: 1-6 16.7% 6-12 50.0% 2-7 28.6% 1-3 33.3% 10-2 50.0%  
 FT %: 3-4 75.0% 1-2 50.0% 10-1 76.9% 3-6 50.0% 17-2 68.0%

Officials: Eric Koch, Chaney Muench, Shandra Twine  
 Technical fouls: Old Dominion-OIGBOKIE, Odegua. North Texas-None.  
 Attendance: 1028

## 16

North Texas 73 - Charlotte 68  
Denton, TX • 1/13/18

Charlotte 68 • 6-11 (2-2)

#	Player	Total			3-Ptr			Rebounds			PF	TP	A	TO	Blk
---	--------	-------	--	--	-------	--	--	----------	--	--	----	----	---	----	-----



# 2017-18 BOX SCORES

## 17 Middle Tennessee 56 - North Texas 48 Murfreesboro, TN • 1/18/18

North Texas 48 • 11-6, 2-3

#	Player	Total			3-Ptr			Rebounds			PF	TP	A	TO	Blk	Stl	Min
		FG-FGA	FG-FGA	FT-FTA	FG-FGA	FG-FGA	FT-FTA	Off	Def	Tot							
34	BUCKNER, Micayla	f	4-5	0-0	0-0	3	1	4	5	8	0	2	1	0	0	13	
02	GOODHART, Grace	g	2-10	2-7	2-4	0	1	1	1	8	1	3	0	0	0	22	
03	SMITH, Brittany	g	0-0	0-0	2-2	0	3	3	3	2	2	2	0	0	0	34	
23	BRADLEY, Terriell	g	2-12	1-2	5-6	1	6	7	2	10	1	2	0	0	0	38	
33	HOLMES, Lauren	g	4-11	0-5	1-2	2	1	3	3	9	0	1	0	3	22		
10	HENDERSON, Adrianna	g	1-2	0-0	0-0	0	1	1	2	2	2	1	0	1	16		
12	POLAND, Jada	g	1-2	1-1	0-0	0	2	2	2	3	0	0	0	1	16		
21	TERRELL, Deja	g	1-2	0-0	0-0	0	2	2	0	2	1	2	2	0	17		
24	MIMS, Trena	g	2-6	0-0	0-0	2	0	2	0	4	0	0	0	0	22		
Team						2	2	4									
Totals			17-50	4-15	10-14	10	19	29	18	48	7	13	3	5	200		

1st - FG % 2-11 18.2% 2nd: 5-11 45.5% 3rd: 4-14 28.6% 4th: 6-14 42.9% Game: 17-5 34.0% Deadball  
3FG %: 2-7 28.6% 1-1 100.0 0-3 0.0% 1-4 25.0% 4-15 26.7% 1-4 25.0%  
FT %: 0-0 0.0% 7-8 87.5% 1-2 50.0% 2-4 50.0% 10-1 71.4% Rebound 3

Middle Tennessee 56 • 11-7, 3-2

#	Player	Total			3-Ptr			Rebounds			PF	TP	A	TO	Blk	Stl	Min
		FG-FGA	FG-FGA	FT-FTA	FG-FGA	FG-FGA	FT-FTA	Off	Def	Tot							
00	JOHNSON, Alex	f	2-7	1-2	3-5	0	3	3	3	8	1	6	0	2	28		
23	LYON, Gabby	f	2-4	0-1	0-0	3	5	8	2	4	2	4	0	2	32		
05	SISSOM, Abbey	g	1-4	1-2	4-4	0	2	2	1	7	2	2	0	0	34		
12	LOUOU, Jess	g	5-10	4-8	0-0	0	6	6	2	14	3	1	0	1	39		
4	COLLIER, Katie	g	1-2	1-2	2-6	0	4	4	1	5	0	2	0	0	22		
13	MAJORS, Jordan	g	0-1	0-0	0-0	0	0	0	0	0	0	0	0	1	3		
15	JONES, Anna	g	6-9	3-5	0-0	3	0	3	4	15	3	2	0	2	25		
24	REUTER, Rebecca	g	1-4	1-3	0-0	2	3	5	0	3	1	0	0	0	17		
Team						0	1	1									
Totals			18-41	11-23	9-15	8	24	32	13	56	12	19	0	8	200		

1st - FG % 3-12 25.0% 2nd: 4-13 30.8% 3rd: 6-11 54.5% 4th: 5-5 100.0% Game: 18-4 43.9% Deadball  
3FG %: 2-8 25.0% 2-7 28.6% 4-5 80.0% 3-3 100.0 11-2 47.8% 9-15 60.0%  
FT %: 2-2 100.0 0-0 0.0% 1-2 50.0% 6-11 54.5% 9-15 60.0% Rebound 2

Officials: Dawn Marsh, Royce Blevins, Marcus Smith  
Technical fouls: North Texas-None. Middle Tennessee-None.  
Attendance: 3230

## 18 UAB 68- North Texas 52 Birmingham, AL • 1/20/18

North Texas 52 • 11-7, 2-4

#	Player	Total			3-Ptr			Rebounds			PF	TP	A	TO	Blk	Stl	Min
		FG-FGA	FG-FGA	FT-FTA	FG-FGA	FG-FGA	FT-FTA	Off	Def	Tot							
34	BUCKNER, Micayla	f	1-5	0-0	2-6	2	2	4	3	4	1	3	0	2	23		
02	GOODHART, Grace	g	2-4	1-2	0-0	0	0	0	2	5	1	0	0	1	23		
03	SMITH, Brittany	g	4-9	1-3	3-4	0	6	6	3	12	2	3	1	0	30		
23	BRADLEY, Terriell	g	6-15	1-4	8-9	2	5	7	2	21	2	6	1	4	38		
33	HOLMES, Lauren	g	2-7	0-3	0-0	2	3	5	1	4	0	0	1	1	31		
10	HENDERSON, Adrianna	g	0-3	0-2	2-4	0	0	0	2	2	0	1	0	0	12		
12	POLAND, Jada	g	0-0	0-0	0-2	1	1	2	4	0	0	2	0	0	14		
21	TERRELL, Deja	g	1-3	0-1	0-0	1	1	2	2	2	0	1	0	0	10		
24	MIMS, Trena	g	1-9	0-1	0-0	1	1	2	2	2	3	0	0	1	19		
Team						3	1	4									
Totals			17-55	3-16	15-25	12	20	32	21	52	9	16	3	9	200		

1st - FG % 6-16 37.5% 2nd: 2-11 18.2% 3rd: 3-11 27.3% 4th: 6-17 35.3% Game: 17-5 30.9% Deadball  
3FG %: 1-5 20.0% 1-4 25.0% 1-4 25.0% 0-3 0.0% 3-16 18.8% 15-2 60.0%  
FT %: 1-2 50.0% 1-2 50.0% 9-13 69.2% 4-8 50.0% Rebound 7

UAB 68 • 15-3, 4-1

#	Player	Total			3-Ptr			Rebounds			PF	TP	A	TO	Blk	Stl	Min
		FG-FGA	FG-FGA	FT-FTA	FG-FGA	FG-FGA	FT-FTA	Off	Def	Tot							
24	RAWLS, Kara	f	2-6	0-0	0-0	2	8	10	4	4	1	2	1	2	20		
00	BARNES, Miyah	g	4-6	2-2	2-2	0	1	1	4	12	10	4	0	2	31		
03	VENDRELL, Angela	g	0-3	0-1	0-0	0	8	8	2	0	3	5	3	3	30		
20	KUZMANIC, Deanna	g	2-5	1-1	0-0	0	1	1	3	5	3	2	0	0	17		
32	CHILDRESS, Rachael	g	3-10	2-6	8-8	0	1	1	0	16	3	1	0	0	37		
02	SINGLETON, Whytney	g	0-1	0-0	4-4	0	1	1	2	4	1	2	1	0	8		
04	ROLDAN, Talia	g	0-0	0-0	0-0	0	0	0	0	0	0	0	0	0	2		
12	MAGEE, Trista	g	0-2	0-1	2-2	1	1	2	3	2	0	0	0	0	5		
13	THOMAS, Katelynn	g	11-11	0-0	0-0	0	0	0	3	22	0	3	0	0	19		
14	LEWIS, Terra	g	0-1	0-0	0-0	0	0	0	0	0	0	0	0	0	2		
22	GARLAND, Maya	g	0-1	0-0	0-0	0	0	0	0	0	0	0	0	0	2		
23	KERSTEIN, Lea	g	1-3	1-2	0-0	0	3	3	0	3	0	1	0	0	20		
34	JOHNSON, Imani	g	0-0	0-0	0-0	0	3	3	3	0	0	0	0	0	7		
Team						3	2	5									
Totals			23-49	6-13	16-16	6	29	35	24	68	21	20	5	7	200		

1st - FG % 4-13 30.8% 2nd: 7-12 58.3% 3rd: 7-12 58.3% 4th: 5-12 41.7% Game: 23-4 46.9% Deadball  
3FG %: 2-6 33.3% 1-2 50.0% 1-2 50.0% 2-3 66.7% 6-13 46.2% 16-1 100.0  
FT %: 4-4 100.0 8-8 100.0 2-2 100.0 2-2 100.0 Rebound 0

## 19 WKU 79 - North Texas 65 Denton, TX • 1/26/18

Western Kentucky 79 • 15-5 (6-1)

#	Player	Total			3-Ptr			Rebounds			PF	TP	A	TO	Blk	Stl	Min
		FG-FGA	FG-FGA	FT-FTA	FG-FGA	FG-FGA	FT-FTA	Off	Def	Tot							
15	ELGEDAWY, Raneem	f	5-10	0-0	2-4	4	2	6	5	12	0	0	2	1	20		
23	BROWN, Ivy	f	6-11	1-3	3-3	4	2	6	4	16	2	1	3	2	33		
32	SMITH, Kayla	f	0-0	0-0	0-0	0	1	1	0	0	0	0	0	0	3		
05	CREECH, Whitney	g	0-2	0-0	2-2	0	1	1	2	2	0	2	0	1	12		
10	BROWN, Tashia	g	9-26	0-0	10-11	2	2	4	2	28	2	3	0	2	37		
03	BOPP, Sidnee	g	3-3	1-1	0-0	0	1	1	2	7	4	2	1	1	20		
04	GIVENS, Dee	g	4-11	2-7	0-0	2	3	5	0	10	3	0	1	2	26		
12	TAMPA, Nichel	g	0-1	0-0	0-0	0	0	0	3	0	0	0	0	2	22		
22	PORTER, Sherry	g	2-3	0-0	0-0	2	2	4	3	4	1	0	0	0	27		
Team						2	3	5									
Totals			29-67	4-11	17-20	16	17	33	21	79	12	8	7	11	200		

1st - FG % 9-20 45.0% 2nd: 6-19 31.6% 3rd: 8-14 57.1% 4th: 6-14 42.9% Game: 29-6 43.3% Deadball  
3FG %: 1-4 25.0% 0-2 0.0% 2-3 66.7% 1-2 50.0% 4-11 36.4% 4-11 36.4%  
FT %: 2-2 100.0 7-9 77.8% 5-5 100.0 3-4 75.0% 17-2 85.0% Rebound 2

North Texas 65 • 11-8 (2-5)

#	Player	Total			3-Ptr			Rebounds			PF	TP	A	TO	Blk	Stl	Min
		FG-FGA	FG-FGA	FT-FTA	FG-FGA	FG-FGA	FT-FTA	Off	Def	Tot							
12	POLAND, Jada	f	2-5	0-0	0-0	2	8	10	3	4	0	1	0	0	34		
34	BUCKNER, Micayla	f	6-8	0-0	1-2	4	3	7	2	13	0	4	0	0	27		
03	SMITH, Brittany	g	1-5	0-0	0-0	1	3	4	4	2	3	4	0	2	32		
23	BRADLEY, Terriell	g	6-16	4-5	13-15	2	4	6	3	29	1	4	2	1	38		
24	MIMS, Trena	g	5-9	1-1	0-0	1	2	3	0	11	6	1	0	0	37		
02	GOODHART, Grace	g	1-2	0-1	0-0	0	0	0	2	2	0	3	0	0	15		
10	HENDERSON, Adrianna	g	1-6	0-3	2-2	0	1	1	2	4	0	4	0	0	12		
21	TERRELL, Deja	g	0-1	0-0	0-0	1	0	1	2	0	0	0	0	0	5		
Team						4	2	6									
Totals			22-52	5-10	16-19	15	23	38	18	65	10	21	2	3	200		

1st - FG % 4-16 25.0% 2nd: 4-10 40.0% 3rd: 4-10 40.0% 4th: 10-1 62.5% Game: 22-5 42.3% Deadball  
3FG %: 1-5 20.

2017-18 BOX SCORES

21

UTSA 70 - North Texas 58 San Antonio, TX • 2/2/18

North Texas 58 • 11-10, 2-7 C-USA

Table with columns for player name, position, and various stats (FG-FGA, 3-Ptr, FT-FTA, Rebounds, PF, TP, A TO Blk Stl, Min).

Summary row for North Texas 58 including totals for 1st-4th quarters, Game, and Deadball Rebound.

UTSA 70 • 4-17, 2-7 C-USA

Table with columns for player name, position, and various stats (FG-FGA, 3-Ptr, FT-FTA, Rebounds, PF, TP, A TO Blk Stl, Min).

Summary row for UTSA 70 including totals for 1st-4th quarters, Game, and Deadball Rebound.

Officials: Mark Zentz, Metta Roberts, Gina Cross. Technical fouls: North Texas-None. UTSA-CHIDOMERE, Crystal. Attendance: 605

22

North Texas 92 - FIU 46 Miami, FL • 2/8/18

North Texas 92 • 12-10, 3-7 C-USA

Table with columns for player name, position, and various stats (FG-FGA, 3-Ptr, FT-FTA, Rebounds, PF, TP, A TO Blk Stl, Min).

Summary row for North Texas 92 including totals for 1st-4th quarters, Game, and Deadball Rebound.

FIU 46 • 6-17, 3-4 C-USA

Table with columns for player name, position, and various stats (FG-FGA, 3-Ptr, FT-FTA, Rebounds, PF, TP, A TO Blk Stl, Min).

Summary row for FIU 46 including totals for 1st-4th quarters, Game, and Deadball Rebound.

Officials: Troy Winters, Meadow Overstreet, Xiomara Cruz. Technical fouls: North Texas-None. FIU-None. Attendance: 298

23

North Texas 65 - Florida Atlantic 51 Boca Raton, FL • 2/10/18

North Texas 65 • 13-10, 4-7 CUSA

Table with columns for player name, position, and various stats (FG-FGA, 3-Ptr, FT-FTA, Rebounds, PF, TP, A TO Blk Stl, Min).

Summary row for North Texas 65 including totals for 1st-4th quarters, Game, and Deadball Rebound.

Florida Atlantic 51 • 10-11, 4-6 CUSA

Table with columns for player name, position, and various stats (FG-FGA, 3-Ptr, FT-FTA, Rebounds, PF, TP, A TO Blk Stl, Min).

Summary row for Florida Atlantic 51 including totals for 1st-4th quarters, Game, and Deadball Rebound.

Officials: Bill Laranca, Bryan Gariand, Angelica Suffren. Technical fouls: North Texas-None. Florida Atlantic-None. Attendance: 786

Score by periods table for Florida Atlantic game.

Points and Stats table for Florida Atlantic game.

24

North Texas 71 - Southern Miss 62 Denton, TX • 2/15/18

Southern Miss 62 • 13-11 (5-6)

Table with columns for player name, position, and various stats (FG-FGA, 3-Ptr, FT-FTA, Rebounds, PF, TP, A TO Blk Stl, Min).

Summary row for Southern Miss 62 including totals for 1st-4th quarters, Game, and Deadball Rebound.

North Texas 71 • 14-10 (5-7)

Table with columns for player name, position, and various stats (FG-FGA, 3-Ptr, FT-FTA, Rebounds, PF, TP, A TO Blk Stl, Min).

Summary row for North Texas 71 including totals for 1st-4th quarters, Game, and Deadball Rebound.

Officials: Marc Merritt, Jody Cantrell, Kim Thebo. Technical fouls: Southern Miss-None. North Texas-None. Attendance: 1602

Score by periods table for North Texas game.

Points and Stats table for North Texas game.





# 2017-18 BOX SCORES

29

North Texas 58 - Charlotte 55

Frisco, TX • 3/7/18

**North Texas 58 • 16-13 (6-10)**

#	Player	Total		3-Ptr		Rebounds			PF	TP	A	TO	Blk	Stl	Min
		FG-FGA	FG-FGA	FT-FTA	Off	Def	Tot								
23	BRADLEY, Terriell	f	6-10	0-3	4-6	0	1	1	0	16	2	2	0	3	34
34	BUCKNER, Micayla	f	4-8	0-0	0-2	1	5	6	2	8	1	1	2	0	32
02	GOODHART, Grace	g	4-8	2-5	0-0	0	0	0	3	10	3	3	0	2	32
03	SMITH, Brittany	g	2-7	0-1	2-4	1	2	3	1	6	4	2	0	3	37
24	MIMS, Trena	g	2-6	0-1	0-0	1	5	6	3	4	4	2	0	1	19
10	HENDERSON, Adrianna		1-3	1-2	0-0	0	1	1	1	3	1	1	0	1	12
21	TERRELL, Deja		0-0	0-0	0-0	1	2	3	2	0	0	1	1	0	8
33	HOLMES, Lauren		4-9	3-5	0-0	1	3	4	1	11	1	0	1	1	26
Team						1	1	2			1				
Totals			23-51	6-17	6-12	6	20	26	13	58	16	13	4	11	200

1st - FG %	6-12	50.0%	2nd: 10-1	62.5%	3rd: 4-13	30.8%	4th: 3-10	30.0%	Game: 23-5	45.1%	Deadball
3FG %:	2-4	50.0%	2-4	50.0%	1-5	20.0%	1-4	25.0%	6-17	35.3%	Rebound
FT %:	0-0	0.0%	0-0	0.0%	3-4	75.0%	3-8	37.5%	6-12	50.0%	3

**Charlotte 55 • 14-16 (10-6)**

#	Player	Total		3-Ptr		Rebounds			PF	TP	A	TO	Blk	Stl	Min
		FG-FGA	FG-FGA	FT-FTA	Off	Def	Tot								
30	ROBINSON, Jaida	f	1-5	0-0	2-2	2	3	5	1	4	0	1	0	0	13
34	PEARSON, Dara	f	3-3	0-0	2-4	3	5	8	3	8	0	1	0	1	21
04	RAVENTÓS, Laia	g	5-10	1-1	2-2	0	6	6	1	13	7	7	0	4	37
13	WILSON, Octavia	g	1-5	0-0	0-0	1	1	2	1	2	0	0	0	1	29
44	RANSOM, Amaya	g	6-14	4-7	2-2	0	2	2	3	18	2	4	0	1	40
03	LINNEY, Mariah		1-5	0-0	2-2	1	3	4	1	4	2	5	1	0	31
10	MARTIN, Jada		0-1	0-0	0-0	0	0	0	0	0	0	0	1	0	3
15	JAMISON-MYERS, Nyilah		3-5	0-0	0-1	0	1	1	2	6	1	2	1	0	19
22	HARLEY, Lauren		0-0	0-0	0-0	0	0	0	0	0	0	1	0	0	7
Team						2	4	6							
Totals			20-48	5-8	10-13	9	25	34	12	55	12	21	3	7	200

1st - FG %	5-11	45.5%	2nd: 3-9	33.3%	3rd: 8-15	53.3%	4th: 4-13	30.8%	Game: 20-4	41.7%	Deadball
3FG %:	1-1	100.0	1-1	100.0	1-2	50.0%	2-4	50.0%	5-8	62.5%	Rebound
FT %:	1-2	50.0%	6-7	85.7%	0-0	0.0%	3-4	75.0%	10-1	76.9%	2

Officials: Gina Cross, Brian Hall, Angelica Sufferen  
 Technical fouls: North Texas-None. Charlotte-None.  
 Attendance: 2031

## 2017-18 C-USA STATS

#	Player	gp-gs	min	avg	Total		3-Point		F-Throw		Rebounds				pf	dq	a	to	blk	stl	pts	avg
					fg-fga	fg%	3fg-fga	3fg%	ft-fa	ft%	off	def	tot	avg								
23	BRADLEY, Terriell	16-16	560	35.0	93-234	.397	38-78	.487	102-124	.823	29	63	92	5.8	42	0	28	38	10	17	326	20.4
34	BUCKNER, Micayla	16-16	369	23.1	48-106	.453	0-2	.000	10-22	.455	31	39	70	4.4	51	2	4	31	12	8	106	6.6
33	HOLMES, Lauren	15-6	361	24.1	34-122	.279	18-67	.269	14-21	.667	27	32	59	3.9	34	0	7	11	7	24	100	6.7
03	SMITH, Brittany	16-16	473	29.6	35-91	.385	6-21	.286	17-31	.548	6	30	36	2.3	39	1	57	31	1	18	93	5.8
10	HENDERSON, Adriann	16-0	223	13.9	34-74	.459	5-24	.208	15-22	.682	10	22	32	2.0	23	0	8	17	2	9	88	5.5
02	GOODHART, Grace	16-12	360	22.5	25-77	.325	15-47	.319	9-16	.563	1	26	27	1.7	22	0	23	15	2	10	74	4.6
24	MIMS, Trena	16-11	429	26.8	26-84	.310	2-8	.250	7-11	.636	17	20	37	2.3	22	0	28	27	4	10	61	3.8
21	TERRELL, Deja	16-0	196	12.3	21-50	.420	1-5	.200	10-18	.556	20	21	41	2.6	42	1	1	18	15	6	53	3.3
12	POLAND, Jada	16-3	220	13.8	15-32	.469	2-4	.500	9-18	.500	15	29	44	2.8	27	1	4	12	5	6	41	2.6
13	SHILLOW, Orianna	3-0	11	3.7	0-3	.000	0-3	.000	0-0	.000	0	0	0	0.0	0	0	1	1	1	0	0	0.0
Team													30	39	69					7		
Total.....		16	3202		331-873	.379	87-259	.336	193-283	.682	186	321	507	31.7	302	5	161	208	59	108	942	58.9
Opponents.....		16	3200		320-764	.419	80-230	.348	217-286	.759	156	400	556	34.8	300	7	168	288	47	98	937	58.6

**TEAM STATISTICS**

	NT	OPP
SCORING	942	937
Points per game	58.9	58.6
Scoring margin	+0.3	-
FIELD GOALS-ATT	331-873	320-764
Field goal pct	.379	.419
3 POINT FG-ATT	87-259	80-230
3-point FG pct	.336	.348
3-pt FG made per game	5.4	5.0
FREE THROWS-ATT	193-283	217-286
Free throw pct	.682	.759
F-Throws made per game	12.1	13.6
REBOUNDS	507	556
Rebounds per game	31.7	34.8
Rebounding margin	-3.1	-
ASSISTS	161	168
Assists per game	10.1	10.5
TURNOVERS	208	288
Turnovers per game	13.0	18.0
Turnover margin	+5.0	-
Assist/turnover ratio	0.8	0.6
STEALS	108	98
Steals per game	6.8	6.1
BLOCKS	59	47
Blocks per game	3.7	2.9
ATTENDANCE	9366	12323
Home games-Avg/Game	8-1171	8-1540
Neutral site-Avg/Game	-	0-0

Date	Opponent	Score	Att.
* 01/03/18	at Louisiana Tech	L 53-61	1749
* 1/5/18	RICE	L 49-50	1211
* 1/11/18	OLD DOMINION	W 63-46	1028
* 1/13/18	CHARLOTTE	W 73-68	643
* 01/18/18	at Middle Tennessee	L 48-56	3230
* 01/20/18	at UAB	L 52-68	369
* 1/26/18	WESTERN KENTUCKY	L 65-79	1134
* 1/28/18	UTEP	L 48-50	1302
* 2/2/18	at UTSA	L 58-70	605
* 02/08/18	at FIU	W 92-46	298
* 02/10/18	at Florida Atlantic	W 65-51	786
* 2/15/18	SOUTHERN MISS	W 71-62	1602
* 02/22/18	at Old Dominion	W 55-52	1762
* 2/24/18	MARSHALL	L 54-62	1136
* 3/1/18	UAB	L 51-69	1310
* 03/03/18	at Rice	L 45-47	3524

\* = Conference game

Score by Periods	1st	2nd	3rd	4th	Totals
North Texas	203	223	256	260	942
Opponents	235	224	258	220	937

## 2017-18 SEASON STATS

#	Player	gp-gs	min	Total		3-Point		F-Throw		Rebounds					pts	avg									
				fg-fga	fg%	3fg-fga	3fg%	ft-fta	ft%	off	def	tot	avg	pf			dq	a	to	blk	stl				
23	BRADLEY, Terriell	29-29	995	34.3	170-410	.415	51-121	.421	152-185	.822	51	108	159	5.5	74	1	61	72	12	43	543	18.7			
33	HOLMES, Lauren	27-17	712	26.4	86-261	.330	41-142	.289	29-37	.784	60	66	126	4.7	60	0	17	21	16	55	242	9.0			
34	BUCKNER, Micayla	29-29	703	24.2	97-201	.483	0-6	.000	17-48	.354	56	99	155	5.3	91	4	8	55	33	19	211	7.3			
03	SMITH, Brittany	27-25	789	29.2	56-149	.376	12-38	.316	35-59	.593	14	54	68	2.5	68	3	90	59	3	33	159	5.9			
02	GOODHART, Grace	29-19	667	23.0	54-160	.338	29-99	.293	16-24	.667	2	47	49	1.7	45	0	42	35	4	27	153	5.3			
24	MIMS, Trena	29-23	788	27.2	61-170	.359	3-16	.188	24-40	.600	34	48	82	2.8	57	1	58	49	4	22	149	5.1			
10	HENDERSON, Adriann	28-0	381	13.6	47-111	.423	10-37	.270	25-35	.714	20	35	55	2.0	41	1	13	31	3	18	129	4.6			
21	TERRELL, Deja	29-0	351	12.1	40-97	.412	2-13	.154	22-44	.500	45	40	85	2.9	69	1	4	30	23	12	104	3.6			
12	POLAND, Jada	28-3	382	13.6	23-59	.390	2-6	.333	16-32	.500	26	60	86	3.1	53	1	8	23	10	13	64	2.3			
13	SHILLOW, Orianna	11-0	59	5.4	0-17	.000	0-17	.000	2-2	1.000	0	1	1	0.1	3	0	2	1	1	1	2	0.2			
Team											52	63	115												12
Total.....		29	5827	634-1635		.388	150-495		.303	338-506		.668	360	621	981	33.8	561	12	303	388	109	243	1756	60.6	
Opponents.....		29	5825	544-1386		.392	138-419		.329	369-523		.706	302	722	1024	35.3	531	12	289	567	84	180	1595	55.0	

TEAM STATISTICS	NT	OPP
SCORING	1756	1595
Points per game	60.6	55.0
Scoring margin	+5.6	-
FIELD GOALS-ATT	634-1635	544-1386
Field goal pct	.388	.392
3 POINT FG-ATT	150-495	138-419
3-point FG pct	.303	.329
3-pt FG made per game	5.2	4.8
FREE THROWS-ATT	338-506	369-523
Free throw pct	.668	.706
F-Throws made per game	11.7	12.7
REBOUNDS	981	1024
Rebounds per game	33.8	35.3
Rebounding margin	-1.5	-
ASSISTS	303	289
Assists per game	10.4	10.0
TURNOVERS	388	567
Turnovers per game	13.4	19.6
Turnover margin	+6.2	-
Assist/turnover ratio	0.8	0.5
STEALS	243	180
Steals per game	8.4	6.2
BLOCKS	109	84
Blocks per game	3.8	2.9
ATTENDANCE	18169	17368
Home games-Avg/Game	15-1211	11-1378
Neutral site-Avg/Game	-	3-735

Date	Opponent	Score	Att.
11/10/17	MACU	W 86-52	1007
11/14/17	TEXAS A&M INTERNATIONAL	W 64-38	807
11/19/17	K-STATE	L 54-55	1172
11/23/17	vs COASTAL CAROLINA	W 50-34	0
11/24/17	vs DETROIT	W 63-57	175
11/29/17	SMU	W 47-40	3243
12/2/17	TULSA	W 66-43	1181
12-5-17	at Indiana	L 63-68	2303
12/09/17	LA SALLE	W 70-44	996
12/18/17	at UIC	L 67-70	249
12/20/17	at Eastern Illinois	Wot 63-61	287
12/30/17	OKLAHOMA PANHANDLE ST. UNI	W 63-41	397
* 01/03/18	at Louisiana Tech	L 53-61	1749
* 1/5/18	RICE	L 49-50	1211
* 1/11/18	OLD DOMINION	W 63-46	1028
* 1/13/18	CHARLOTTE	W 73-68	643
* 01/18/18	at Middle Tennessee	L 48-56	3230
* 01/20/18	at UAB	L 52-68	369
* 1/26/18	WESTERN KENTUCKY	L 65-79	1134
* 1/28/18	UTEP	L 48-50	1302
* 2/2/18	at UTSA	L 58-70	605
* 02/08/18	at FIU	W 92-46	298
* 02/10/18	at Florida Atlantic	W 65-51	786
* 2/15/18	SOUTHERN MISS	W 71-62	1602
* 02/22/18	at Old Dominion	W 55-52	1762
* 2/24/18	MARSHALL	L 54-62	1136
* 3/1/18	UAB	L 51-69	1310
* 03/03/18	at Rice	L 45-47	3524
03/07/18	vs Charlotte	W 58-55	2031

\* = Conference game

Score by Periods	1st	2nd	3rd	4th	OT	Totals
North Texas	410	430	447	461	8	1756
Opponents	397	393	403	396	6	1595



## 2017-18 BROADCAST ROSTER



**2** GRACE GOODHART  
G, 5-9, JR  
Sunnyvale, TX  
Loyola Univ. Chicago



**3** BRITTANY SMITH  
PG, 5-6, JR  
Houston, TX  
South Plains College



**10** ADRIANNA HENDERSON  
G, 5-8, SOPH  
Topeka, KS  
Topeka HS



**12** JADA POLAND  
F, 6-0, SOPH  
St. Louis, MO  
Ft. Zumwalt West HS



**13** ORIANNA SHILLOW  
G, 5-8, JR  
Round Rock, TX  
Stony Point HS



**21** DEJA TERRELL  
F, 6-1, FR  
Oak Cliff, TX  
Life Oak Cliff HS



**23** TERRIELL BRADLEY  
G, 5-10, R-JR  
New Orleans, LA  
Univ. of Kansas



**24** TRENA MIMS  
PG, 5-5, FR  
Muskogee, OK  
Muskogee HS



**33** LAUREN HOLMES  
G, 5-9, FR  
Fayetteville, AR  
Fayetteville HS



**34** MICAYLA BUCKNER  
P, 6-4, R-JR  
Garland, TX  
Collin College



JALIE MITCHELL  
HEAD COACH  
3rd Year  
Duncanville, TX



BOBBY BRASEL  
Associate Head Coach  
3rd Year  
Bring Springs, TX



CARLOS KNOX  
Assistant Coach  
1st Year  
Akron, OH



KASONDRA FOREMAN  
Assistant Coach  
3rd Year  
Arlington, TX