



NORTH TEXAS WOMEN'S BASKETBALL

Assistant Director of Communications (Women's Basketball contact): Luke Della
Phone: (510) 725-2130 • Email: luke.della@unt.edu

Website: MeanGreenSports.com • Facebook: Facebook.com/MeanGreenWBB • Twitter: @MeanGreenWBB • Instagram: @MeanGreenWBB • #GMG • #PRIDE

2017-18 SCHEDULE

Overall: 14-10 • C-USA: 5-7

DATE	OPPONENT	TIME/RESULT
11/4	vs. TWU (ex)	W, 69-66
11/10	vs. MACU	W, 86-52
11/14	vs. TAMU	W, 64-38
11/19	vs. K-State	L, 55-54
11/23	vs. Coastal Carolina [^]	W, 50-34
11/24	vs. Detroit Mercy [^]	W, 63-57
11/29	vs. SMU	W, 47-40
12/02	vs. Tulsa	W, 66-43
12/05	at Indiana	L, 68-63
12/09	vs. La Salle	W, 70-44
12/18	at UIC	L, 70-67
12/20	at Eastern Illinois	W, 63-61(ot)
12/30	vs. OPSU	W, 63-41
1/3	at LA Tech	L, 61-53
1/5	vs. Rice	L, 50-49
1/11	vs. Old Dominion	W, 63-46
1/13	vs. Charlotte	W, 73-68
1/18	at Middle Tenn.	L, 56-48
1/20	at UAB	L, 68-52
1/26	vs. WKU	L, 79-65
1/28	vs. UTEP	L, 50-48
2/2	at UTSA	L, 70-58
2/8	at FIU	W, 92-46
2/10	at Florida Atlantic	W, 65-51
2/15	vs. Southern Miss	W, 71-62
2/22	at Old Dominion	6:00 PM CT
2/24	vs. Marshall	7:00 PM CT
3/1	vs. UAB	5:00 PM CT
3/3	at Rice	4:30 PM CT

[^] San Juan Shootout

North Texas

MEAN GREEN (14-10, 5-7 C-USA)



North Texas won its third-straight game with a nine-point home win over Southern Miss on Thursday Feb. 15, its only game last week.

The Mean Green jumped out to a 22-point third quarter lead after Terriell Bradley scored 15 points in the second quarter alone. But UNT saw the lead nearly completely disappear as the Lady Eagles trailed by only four with a little over a minute to go. Late defensive stops and key baskets late in the shot clock by the Mean Green allowed them to hold on and secure their ninth home win of the year, their most home wins since the 2007-08 season.

North Texas vs. Old Dominion

Date.....Thur., Feb. 22 | 6 p.m. CT
Venue.....The Ted Constant Convocation Center
Location.....Norfolk, VA.
Live Tweets . @MeanGreenWBB
TV.....beIN Sports
Radio.....KNTU 88.1 FM John Liddle (PxP)
Series.....ODU leads 6-3
Last Meeting UNT 63, ODU 46 (Denton, TX), 1/11/18
UNT has won two of the last three meetings but has never won at Old Dominion (0-3)

OLD DOMINION

MONARCHS (8-19, 6-7 C-USA)



North Texas Storylines

TERRIELL BRADLEY

If Terriell Bradley maintains her current C-USA scoring average of 21.7 ppg, she is on track to finish the regular season with 548 points (19.5 ppg), which would be the fourth-most points scored in a single season in program history. The program record is 611. A 19.5 ppg average would be tied for the second-highest. Bradley has been the game's leading scorer 15 different times this season, including the last six straight games. She outscored the conference's leading scorer Tashia Brown of WKU on Jan. 26.

TOP-NOTCH DEFENSE

North Texas owns the nation's No. 12 scoring defense, giving up an average of just 54.6 ppg. It had been No. 3 for a majority of the season but dropped during the five-game losing streak.

ONE WIN AWAY

North Texas is one win shy of securing its first winning season in 12 years. UNT went 19-9 in 2005-06. It is also one win away from tying the 2011-12 team's win total of 15. Since the 2005-06 team, no UNT team has won more than 15 games.

LAST GAME RECAP

THE GREAT

UNT held USM scoreless for 6 mins & 55 seconds early in the first quarter, just the start UNT had been looking for.

THE GOOD

UNT shot 45 percent from the field.

THE OK

The Mean Green made seven 3-pointers but none in the second-half.

THE BAD

North Texas led by 22 points with 7:45 left in the third quarter and saw its lead shrink to four points with 1:08 left in the game.

BEST START IN 12 YEARS

North Texas finished non-conference with a 9-3 record, its best start since the 2005-06 season. That team was the last team to finish with a winning record.

TOUGH START TO C-USA

Five of North Texas' first seven conference games came against teams picked to finish in the top five of the C-USA Preseason Poll. UAB wasn't but currently stands at 21-4.

@MeanGreenWBB



Streaks & Trends

15+

North Texas forces a C-USA leading 19.6 turnovers per game. In all 14 of the Mean Green's wins this year they've forced 15+ turnovers. They are 0-4 when they don't force at least 15 turnovers

FINDING THE OFFENSE

During their three-game winning streak, the Mean Green have shot over 40 percent in each game. In the 11 games prior to their current 3-game winning streak, UNT only shot over 40 percent twice, they were 4-7 during that 11-game streak.

27 3-POINTERS

North Texas has made a total of 27 3-pointers during their three-game winning streak. It's the most 3-pointers they've made over a three game stretch this season. The most 3-pointers they've made over a four-game stretch is 29 from 1/3-1/13.

76 POINTS PER GAME

UNT is averaging 76 ppg during its 3-game winning streak, the most ppg over a 3-game stretch this season.

Starting Five

North Texas is 4-0 this season when Smith, Mims, Goodhart, Bradley and Buckner start. That starting five has started every game during the three-game winning streak.

73 PERCENT

Terriell Bradley is shooting 73 percent (14-19) from deep during the Mean Green's three-game winning streak.

She's shooting 62 percent (18-29) from deep in their last five games. Over the last five games, Bradley is shooting better from deep than five Mean Green every day players are shooting from the free throw line.

On The Road

Terriell Bradley is averaging 4.5 more points and 2.6 more rebounds per game on the road than at home

10 Straight Games

Terriell Bradley has led the Mean Green in scoring in 10 straight games — every game in the 2018 calendar year.

Holmes From Deep

North Texas is 8-2 this season when Lauren Holmes makes two or more 3-pointers in a game. The two losses came against Kansas State and Rice, both of those games the Mean Green lost by one point each.

Mims Not Getting Fouled

Freshman Trena Mims is averaging 27 minutes per conference game but has only been to the free throw line a total of five times in the 12 games. She was 2-3 from the free throw line on Feb. 15 versus Southern Miss. It was the first time she had been to the free throw line in eight games.

Road Wins

If North Texas beats Old Dominion on Thursday it'll be its third-straight road win, tying last season's three-game road winning streak, which is the longest since 2005.

LAST 5 GAMES

##	Player	gp-gs	min	avg	Total		3-Point		F-Throw		Rebounds					pts	avg					
					fg-fga	fg%	3fg-fga	3fg%	ft-fta	ft%	off	def	tot	avg	pf			dq	a	to	blk	stl
23	BRADLEY, Terriell	5-5	171	34.2	39-80	.488	18-29	.621	23-32	.719	9	21	30	6.0	14	0	10	7	2	5	119	23.8
10	HENDERSON, Adriann	5-0	72	14.4	14-24	.583	3-6	.500	5-10	.500	4	8	12	2.4	7	0	2	2	0	4	36	7.2
33	HOLMES, Lauren	5-0	111	22.2	11-33	.333	6-21	.286	3-5	.600	7	15	22	4.4	11	0	5	3	1	7	31	6.2
34	BUCKNER, Micayla	5-5	86	17.2	14-32	.438	0-1	.000	3-6	.500	8	9	17	3.4	17	1	2	6	4	3	31	6.2
03	SMITH, Brittany	5-5	140	28.0	10-30	.333	2-7	.286	6-13	.462	1	3	4	0.8	9	0	19	7	0	4	28	5.6
21	TERRELL, Deja	5-0	79	15.8	9-24	.375	0-1	.000	7-11	.636	11	12	23	4.6	17	1	0	7	5	3	25	5.0
12	POLAND, Jada	5-2	98	19.6	9-17	.529	1-3	.333	3-4	.750	6	12	18	3.6	10	1	3	8	4	3	22	4.4
02	GOODHART, Grace	5-3	97	19.4	8-22	.364	4-12	.333	2-6	.333	0	11	11	2.2	4	0	8	2	0	4	22	4.4
24	MIMS, Trena	5-5	140	28.0	9-29	.310	0-1	.000	2-3	.667	8	7	15	3.0	10	0	12	10	1	5	20	4.0
13	SHILLOW, Orianna	1-0	8	8.0	0-3	.000	0-3	.000	0-0	.000	0	0	0	0.0	0	0	1	1	1	0	0	0.0
Team											5	11	16				2					
Total.....		5	1002		123-294	.418	34-84	.405	54-90	.600	59	109	168	33.6	99	3	62	55	18	38	334	66.8
Opponents.....		5	1000		89-230	.387	24-64	.375	77-101	.762	42	129	171	34.2	96	2	41	93	13	23	279	55.8

2017-18 C-USA STANDINGS (as of 2/18/18)

SCHOOL	CONF.	CPCT.	OVERALL	PCT.
WKU	11-2	0.846	20-6	0.769
UAB	10-2	0.833	21-4	0.840
Rice	8-4	0.667	18-6	0.750
Charlotte	8-4	0.667	12-13	0.480
Middle Tennessee	8-5	0.615	16-10	0.615
Louisiana Tech	8-6	0.571	17-10	0.630
Old Dominion	6-7	0.462	8-19	0.296
North Texas	5-7	0.417	14-10	0.583
UTEP	5-7	0.417	14-11	0.560
Southern Miss	5-7	0.417	13-12	0.520
Florida Atlantic	4-8	0.333	10-13	0.435
FIU	4-9	0.308	7-19	0.269
UTSA	4-9	0.308	6-19	0.240
Marshall	2-11	0.154	8-18	0.308

Mean Green's Record In 2017-18 When...

Leading After First Quarter.....	11-1
Trailing After First Quarter.....	2-8
Tied After First Quarter.....	1-1
Leading At The Half.....	12-3
Trailing At The Half.....	2-6
Tied At The Half.....	0-1
Leading After Three Quarters.....	12-2
Trailing After Three Quarters.....	0-8
Tied After Three Quarters.....	2-0
Scoring First.....	8-5
Opponent Scores First.....	6-5
Takes More FG Attempts.....	12-8
Takes Fewer FG Attempts.....	2-2
Same FG Attempts.....	0-0
Commit More Turnovers.....	1-3
Commit Fewer Turnovers.....	12-6
Turnovers Are Even.....	1-1
Commit 15+ Turnovers.....	4-5
Commit Less Than 15 Turnovers....	11-5
Force 15+ Turnovers.....	14-6
Force Less Than 15 Turnovers.....	0-4
More Rebounds.....	9-3
Fewer Rebounds.....	5-7
Same Rebounds.....	0-0
More Assists.....	11-2
Fewer Assists.....	2-7
Same Assists.....	1-1
More Fouls Committed.....	7-8
Fewer Fouls Committed.....	5-2
Same Fouls Committed.....	2-0
Shoot Higher FG%.....	9-2
Shoot Lower FG%.....	5-8
Shoot Same FG%.....	0-0
Shoot Higher FT%.....	4-3
Shoot Lower FT%.....	9-6
Shoot Same FT%.....	1-1
More Points In The Paint.....	11-5
Fewer Points In The Paint.....	2-5
Same Points In The Paint.....	1-0
More 2nd Chance Points.....	12-4
Fewer 2nd Chance Points.....	2-5
Same 2nd Chance Points.....	0-1
More Bench Points.....	8-3
Fewer Bench Points.....	5-6
Same Bench Points.....	1-1
Following A Loss.....	5-6
Following A Win.....	8-3
In November.....	5-1
In December.....	4-2
In January.....	2-6
In February.....	3-1
In March.....	0-0

12 STRAIGHT

Terriell Bradley has scored in double figures in 12 straight games and 21 times total this season. During the last 10 games, Bradley has averaged 22.4 points per game.

3-POINT SHOOTER

In conference play, Terriell Bradley is shooting 53.1 percent (34-64) from 3-point range. UAB's Rachael Childress' 48.9 percent is the second-best.

Bradley is shooting 45.2 percent from deep for the season, which would be the best in a single season in school history.

Bradley has made 47 3-pointers this season, that's 14 more than she made all of last year. Her 47 3-pointers are tied for the 10th most in a single-season in school history

After Thursday's performance against USM, Bradley is averaging 2.8 3-pointers per game in conference, if she keeps up that pace she'll finish the regular season with 58 3-pointers, which would tie 2017 graduate Candice Adams' senior season for the fourth-most in a single season.

NORTH TEXAS QUICK FACTS

LOCATION.....	DENTON, TEXAS
FOUNDED.....	1890
PRESIDENT.....	DR. NEAL SMATRESK
ENROLLMENT.....	38,121
FOUNDED.....	1890
ATHLETIC DIRECTOR.....	WREN BAKER
NICKNAME.....	MEAN GREEN
COLORS.....	GREEN AND WHITE
HOME ARENA.....	THE SUPER PIT
CAPACITY.....	9,797
FIRST YEAR OF BASKETBALL.....	1976
YEARS OF BASKETBALL.....	41
CONFERENCE.....	CONFERENCE USA
HEAD COACH.....	JALIE MITCHELL
OVERALL RECORD.....	37-48 (3RD SEASON)
RECORD AT NORTH TEXAS....	37-48 (3RD SEASON)

MEAN GREEN TEAM RECORD

OVERALL.....	488-692
SUPER PIT WINS.....	272
C-USA RECORD.....	28-53
MOST CONSECUTIVE WINS.....	8 (00-01)
MOST CONSECUTIVE HOME WINS.....	14 (01-02)
MOST CONSECUTIVE ROAD WINS....	4 (00-01)

MEAN GREEN SINGLE GAME TEAM RECORDS

POINTS SCORED.....	116 (11/21/97)
FIELD GOALS.....	45 (2X LAST VS. 12/12/92)
3PT FIELD GOALS.....	13 (2/8/18)
FREE THROWS.....	38 (11/15/98)
REBOUNDS.....	71 (1/20/86)
ASSISTS.....	33 (2/3/94)
BLOCKS.....	10 (2X LAST 11/29/88)
STEALS.....	24 (3X LAST 2/27/00)

MEAN GREEN SINGLE GAME INDV. RECORDS

POINTS.....	42, J. JOHNSTON, 12/16/81
FIELD GOALS.....	18, A. TOLIVER, 2/17/77
3FGS.....	9, T. BRADLEY, 2/8/18
FREE THROWS.....	16 (2 PEOPLE)
FT ATTEMPTS.....	21, J. JOHNSTON 12/16/81
REBOUNDS.....	26, B. SAMPEY, 11/10/79
ASSISTS.....	14, D. TAYLOR, 2/3/94
BLOCKS.....	8, C. CAMPBELL, 2/18/86
STEALS.....	9 (2 PEOPLE)

CURRENT TEAM STREAKS

WINS.....	3
HOME WINS.....	1
AWAY WINS.....	2
NEUTRAL WINS.....	2
C-USA WINS.....	3
LOSSES.....	0
HOME LOSSES.....	0
AWAY LOSSES.....	0
NEUTRAL LOSSES.....	0
NON-CONFERENCE WINS.....	2
NON-CONFERENCE LOSSES.....	0

THE MEAN GREEN

ALL NORTH TEXAS ATHLETIC TEAMS ARE REFERRED TO AS "NORTH TEXAS" OR "UNT" AND THE "MEAN GREEN." DO NOT USE THE TERMS "NORTH TEXAS STATE," OR "EAGLES," TO DESCRIBE OUR TEAM.

Record Setting Night

NINE 3-POINTERS

Redshirt junior Terriell Bradley made a Mean Green record nine 3-pointers on Thursday at FIU. The previous record of eight had been held by Allison Clark since November of 1997. No UNT player had made more than four 3FGs in a game this season.

90 PERCENT FROM DEEP

Terriell Bradley made nine of 10 from deep on Thursday at FIU. Her 90 percent 3FG percentage is the highest in Mean Green history for a player who made five or more 3-pointers.

NINE STRAIGHT 3-POINTERS

After missing her first 3-pointer, Terriell Bradley rattled off nine straight 3-pointers, the most in Mean Green and C-USA history. It's also one off the NCAA record.

13 3-POINTERS

As a team, North Texas made 13 3-pointers on Thursday at FIU, beating the previous record of 11, which had been accomplished four times, most recently in 2007.

North Texas set five program records Thursday at FIU

46-POINT WIN

UNT's 46-point win at FIU was the program's largest road victory ever and is the largest win since they beat ULL by 54 at home on Jan. 24, 2002, Jalie Mitchell's senior season.

27 ASSISTS

UNT had a season-high 27 assists at FIU on Thursday. It's the most assists the Mean Green have had in a game since February of 1995. UNT's guards had 22 assists and zero turnovers against FIU.

10 ASSISTS

Junior Brittany Smith had a UNT career-high 10 assists. She's just the second Mean Green player since 2003 to have 10 or more assists in a game. The other player was 2017 graduate Kelsey Criner who accomplished 10+ assists twice.

BOX SCORE

32 POINTS

Terriell Bradley scored a career-high 32 points on 11-of-15 shooting. She is the first Mean Green player to score 30+ since Kelsey Criner scored 34 in a 3OT game at Rice in Jan. of 2016.

38 FIELD GOALS

North Texas made a season-high 38 field goals on Thursday at FIU. It crushes the previous season-high of 27 (versus Charlotte) and is the most in over 12 seasons.

46 REBOUNDS

North Texas had a season-high 46 rebounds on Thursday at FIU. It is the second-most rebounds the Mean Green have had under third-year head coach Jalie Mitchell. The most is 47, which they accomplished at FIU on Feb. 18, 2016.

92 POINTS

UNT scored 92 points at FIU, the most points they've scored in a regulation game since beating Denver 93-74 on Dec. 17 2013.

##	Player	*	Total			3-Ptr			Rebounds			PF	TP	A	TO	Blk	Stl	Min
			FG-FGA	FG-FGA	FT-FTA	FG-FGA	FG-FGA	FT-FTA	Off	Def	Tot							
02	GOODHART, Grace	*	4-8	2-4	0-0	0	4	4	0	10	4	0	0	1	26			
03	SMITH, Brittany	*	1-5	0-1	0-0	1	1	2	0	2	10	0	0	1	26			
23	BRADLEY, Terriell	*	11-15	9-10	1-2	1	6	7	3	32	2	2	1	1	32			
24	MIMS, Trena	*	4-7	0-0	0-0	1	2	3	1	8	3	0	1	2	26			
34	BUCKNER, Micayla	*	6-10	0-0	0-0	2	3	5	3	12	1	2	2	0	18			
10	HENDERSON, Adrianna		5-7	0-1	0-1	2	3	5	3	10	2	0	0	3	19			
12	POLAND, Jada		2-6	1-2	2-2	2	2	4	1	7	1	1	0	0	13			
13	SHILLOW, Orianna		0-3	0-3	0-0	0	0	0	0	0	1	1	1	0	8			
21	TERRELL, Deja		3-6	0-0	0-0	2	3	5	2	6	0	2	0	0	13			
33	HOLMES, Lauren		2-3	1-2	0-0	0	3	3	0	5	3	0	0	2	19			
Team						2	3	5										
Totals			38-70	13-23	3-5	13	30	43	13	92	27	8	5	10	200			

1st - FG %	10-1	71.4%	2nd: 9-19	47.4%	3rd: 11-2	55.0%	4th: 8-17	47.1%	Game: 38-7	54.3%	Deadball
3FG %:	3-6	50.0%	5-8	62.5%	3-4	75.0%	2-5	40.0%	13-2	56.5%	Rebound
FT %:	2-2	100.0%	0-0	0.0%	1-2	50.0%	0-1	0.0%	3-5	60.0%	1

CAREER STARTS

- Terriell Bradley..... 53**
- Micayla Buckner..... 30**
- Brittany Smith..... 20**
- Trena Mims..... 18**
- Lauren Holmes..... 17**
- Grace Goodhart..... 15**
- Jada Poland..... 3**
- Orianna Shillow..... 3**

LEADS / DEFICITS

- Largest Lead In Win**
48, vs. FIU 2/8/18
- Largest Lead In Loss**
11, (2x) vs. K-State & at UIC
- Largest Deficit In Win**
14, at FAU 2/10/18
- Largest Deficit In Loss**
22, (2x) at UAB & vs. WKU

INCREASED SUPER PIT ATTENDANCE

For a third straight season, the Mean Green have increased their total and season average home attendance. With still two home games remaining, North Texas' average home attendance of 1,209 is the highest its been in over 12 years and a 19.5% increase from last year, which was a 33% increase from 2015-16.

The Mean Green currently rank seventh in C-USA in average home attendance.

5 MINS OR LONGER

North Texas has held a team scoreless for five minutes or longer 15 different times this season, they held Southern Miss scoreless for over 6 minutes and 55 seconds in the first quarter.

FRESHMAN 15

UNT freshman Deja Terrell scored a season-high 15 points on Dec. 30. All three Mean Green freshmen have now scored 15 or more points in a game this season. UNT hasn't had that many freshmen score 15+ in a single season in the last 12 years.

40 OR FEWER

North Texas has held three teams this season to 40 or fewer points. Under third year head coach Jalie Mitchell, UNT has held five teams to 40 or fewer. In the 1,162 games prior to Mitchell's arrival, UNT had only accomplished that six times.

50 OR FEWER

North Texas has held 10 teams to 50 or fewer points this year. They held just one team to 50 or fewer points last year. The 10 times is the most times in a single season in program history, beating the 2011-12 team's record of eight.

2017-18 Streaks

<i>Consecutive double-figure scoring games</i>	<i>Total double-doubles</i>	<i>Total double-digit scoring games</i>	<i>Total games with 4+ fouls</i>
Terriell Bradley 12	Lauren Holmes 2	Terriell Bradley 21	Micayla Buckner 10
Brittany Smith 1	Micayla Buckner 1	Lauren Holmes 9	Brittany Smith 7
		Micayla Buckner 9	Terriell Bradley 6
		Trena Mims 4	Deja Terrell 5
		Grace Goodhart 4	Trena Mims 5
		Brittany Smith 4	Jada Poland 4
		Deja Terrell 3	Grace Goodhart 2
		Adrianna Henderson 2	Lauren Holmes 2
			Adrianna Henderson 1
<i>Consecutive games with a 3-pointer</i>	<i>Total 30+ point games</i>	<i>Total games with 5+ field goals</i>	<i>Total technical fouls</i>
Terriell Bradley 10	Terriell Bradley 1	Terriell Bradley 18	Terriell Bradley 2
Grace Goodhart 3		Micayla Buckner 9	Deja Terrell 1
Lauren Holmes 3		Lauren Holmes 6	
		Trena Mims 4	
		Adrianna Henderson 2	
		Deja Terrell 1	
		Brittany Smith 1	
		Jada Poland 1	
		Deja Terrell 1	
		Terriell Bradley 1	
		Trena Mims 1	
		Micayla Buckner 1	
<i>Consecutive made free throws</i>	<i>Total 20+ point games</i>	<i>Total Disqualifications</i>	
Deja Terrell 6	Terriell Bradley 15	Micayla Buckner 4	
Terriell Bradley 2	Lauren Holmes 1	Brittany Smith 1	
Adrianna Henderson 2	Micayla Buckner 1	Adrianna Henderson 1	
Brittany Smith 2		Jada Poland 1	
Micayla Buckner 1		Deja Terrell 1	
Trena Mims 1		Terriell Bradley 1	
Lauren Holmes 1		Trena Mims 1	
<i>Consecutive games without a foul</i>	<i>Total 15+ point games</i>		
Adrianna Henderson 2	Terriell Bradley 18		
Trena Mims 1	Lauren Holmes 5		
	Grace Goodhart 1		
	Adrianna Henderson 1		
	Deja Terrell 1		
	Trena Mims 1		
	Micayla Buckner 1		

Career vs. Old Dominion

Player	gp-gs	min	avg	fg-fga	fg%	3fg-fga	3fg%	ft-fta	ft%	off	def	tot	avg	pf	dq	a	to	blk	stl	pts	avg
Bradley	3-3	111	37	19-49	.387	8-18	.444	15-20	.750	4	9	13	4.3	6	0	5	7	0	7	61	20.3
Buckner	3-1	40	13	4-9	.444	0-0	.000	2-2	1.00	3	0	3	1.0	8	0	0	5	0	1	10	3.3
Goodhart	3-1	54	18	3-19	.157	2-11	.181	0-0	.000	2	5	7	2.3	5	0	1	1	0	3	8	2.6
Smith	1-1	24	24	3-9	.333	2-5	.400	0-0	.000	2	1	3	3.0	0	0	5	1	0	1	8	8.0
Holmes	1-1	24	24	3-7	.428	2-4	.500	0-0	.000	1	2	3	3.0	2	0	0	3	1	0	8	8.0
Henderson	1-0	15	15	2-5	.400	1-4	.250	2-2	1.00	1	1	2	2.0	1	0	0	3	0	2	7	7.0
Poland	2-0	11	5.5	0-1	.000	0-0	.000	5-10	.500	3	3	6	3.0	4	0	0	0	0	1	5	2.5
Mims	1-0	28	28	0-2	.000	0-1	.000	1-2	.500	1	1	2	2.0	1	1	0	0	0	0	1	1.0
Shillow	3-0	13	4.3	0-2	.000	0-1	.000	0-0	.000	0	0	0	0.0	0	0	0	0	0	0	0	0.0
Terrell	1-0	15	15	0-1	.000	0-1	.000	0-0	.000	0	3	3	3.0	3	0	0	2	1	0	0	0.0

#PRIDE

CAREER STATS

	KU/UNT	UNT
PTS	1,037	833
REBS	320	249
ASTS	143	105
3FGs	101	76



Scored a career-high 32 points at FIU

18.8 ppg in non-conf.

134 rebs this season is a season-high

21.3 ppg in C-USA

Went 9-10 from deep on Feb. 8 at FIU and made nine in a row and is now shooting 51.7% from deep

• Preseason All-Conference

• 14 20+ pts games this season

• In just under two years she's made the 10th most FTs in school history

TERRIELLBRADLEY

R-JR // Guard // New Orleans, LA.

23

Bradley's Season In The Record Books

POINTS

	Total	Player	Year
1.	611	Clara Campbell	85-86
2.	585	Lisa Risinger	77-78
3.	562	Jalie Mitchell	01-02
4.	526	Sharon Shelton	77-78
5.	516	Lisa Risinger	78-79
6.	471	Amber Jackson	08-09
7.	462	Ramona Black	87-88
	462	Nikki Ryan	93-94
9.	461	Jalie Mitchell	00-01
	461	Terriell Bradley	17-18

3-POINT FG

	Total	Player	Year
1.	65	Loryn Goodwin	12-13
2.	61	Jill Medlock	03-04
3.	60	Ashley Norris	95-96
4.	58	Candice Adams	16-17
5.	55	Laura McCoy	12-13
6.	55	Allison Clark	97-98
7.	55	Nicole Thomas	01-02
	54	Delaine Taylor	94-95
9.	49	Candice Adams	15-16
10.	47	Nicole Thomas	98-99
	47	Terriell Bradley	17-18

FREE THROWS

	Total	Player	Year
1.	135	Sherronda Williams	91-92
2.	133	Ashley Norris	95-96
3.	123	Jalie Mitchell	01-02
4.	122	Jalie Mitchell	00-01
	122	Terriell Bradley	17-18
6.	121	Terriell Bradley	16-17
7.	108	Ashley Norris	97-98
	108	Jasmine Godbolt	09-10
9.	106	Rosalyn Reades	99-00
10.	105	Nelda Roy	89-90

SCORING AVERAGE

	Avg.	Player	Year
1.	20.4	Clara Campbell	85-86
2.	19.5	Althea Toliver	76-77
	19.5	Lisa Risinger	77-78
4.	19.4	Jalie Mitchell	01-02
5.	19.2	Terriell Bradley	17-18
6.	18.2	Nelda Roy	88-89
7.	17.2	Lisa Risinger	78-79
8.	17.1	Nikki Ryan	93-94
9.	16.9	Isalene Jones	82-83
10.	16.8	Ashley Norris	95-96
	16.8	Amber Jackson	08-09

3-POINT FG%

	Avg.	Player	Year
1.	.452	Terriell Bradley	17-18
2.	.446	Delaine Taylor	94-95
3.	.414	Ashley Norris	99-00
4.	.400	Kelsey Criner	15-16
5.	.389	Jalie Mitchell	01-02
6.	.387	Ashley Norris	95-96
7.	.386	Jaquita Deaton	93-94
	.386	Sanetra Jackson	06-07
9.	.385	Desiree Nelson	10-11

Bradley's Notable 2017-18 Games

Double-Double At Indiana

Although it was in a losing effort, Terriell Bradley recorded her third career double-double with 22 points and 10 rebounds at Indiana on Dec. 5. Bradley led the 15-point second-half comeback by scoring 14 point in the game's final 11 minutes.

Game-Tying Then Winner

Terriell Bradley saved the Mean Green with a game-tying layup in the final seconds of regulation at Eastern Illinois on Dec. 20. She then hit the game-winning mid-range jumper in overtime at the buzzer. The Mean Green were two players down in the game and Bradley played the entire 45 minutes.

Daytona Beach

Terriell Bradley led UNT to back-to-back victories at the San Juan Shootout in Daytona Beach, FL., over the Thanksgiving Weekend with a combined 42 points on .519 percent shooting.

Nine-Straight 3-Pointers

In the program's largest road victory in school history, Terriell Bradley led North Texas to the 46-point win at FIU on Feb. 8 with a career-high 32 points. In the game, Bradley made nine-straight 3-pointers after missing her first attempt, which she said was her most open attempt of the game. She finished 9-of-10 from deep.

Outscores Tashia Brown

In a losing effort, Terriell Bradley outscored the conference's leading scorer Tashia Brown (WKU) 29 points to Brown's 28 on Jan. 26. Bradley scored a then career-high 29 points by making her first 12 free throw attempts of the game. Bradley also took 10 less field goal attempts than Brown in the game.

2nd Quarter vs. USM

Terriell Bradley scored 15 points in the second quarter on six-of-seven shooting and making three 3-pointers in the quarter. Her performance led North Texas to a 13-point half-time lead over the Lady Eagles.

NCAA LEADERS

All games through 2/18/18

SCORING

45. Terriell Bradley 19.2 PPG

STEALS PER GAME

102. Lauren Holmes 2.27 SPG

LEADERS IN C-USA

All games through 2/18/18

SCORING

3. Terriell Bradley 19.2 PPG

39. Lauren Holmes 9.3 PPG

REBOUNDS

21. Terriell Bradley 5.8 RPG

25. Micayla Buckner 5.6 RPG

34. Lauren Holmes 4.7 RPG

ASSISTS

9. Brittany Smith 3.5 APG

24. Terriell Bradley 2.3 APG

26. Trena Mims 2.1 APG

BLOCKS

6. Micayla Buckner 1.2 BPG

16. Deja Terrell .8 BPG

STEALS

4. Lauren Holmes 2.3 SPG

14. Terriell Bradley 1.6 SPG

MINUTES

6. Terriell Bradley 34.5 MPG

LEADERS IN C-USA

C-USA games only through 2/18/18

SCORING

2. Terriell Bradley 21.7 PPG

REBOUNDS

14. Terriell Bradley 6.1 RPG

35. Micayla Buckner 4.6 RPG

ASSISTS

7. Brittany Smith 4.0 APG

29. Trena Mims 2.0 APG

BLOCKS

11. Deja Terrell .9 BPG

14. Micayla Buckner 0.8 BPG

19. Terriell Bradley 0.7 BPG

STEALS

10. Lauren Holmes 1.8 SPG

MINUTES

5. Terriell Bradley 35.5 MPG

OVERTIME WARRIORS

The Mean Green are riding a five-game overtime winning streak. All five of those overtime wins came in the 2017 calendar year and were all away from their home arena, The Super Pit. North Texas only had three overtime wins away from the Super Pit in the program's 39-year history prior to last year. North Texas is 11-26 all-time in overtime games. Five of those 11 wins came in 2017.

5 GAME WINNING STREAK

Last season North Texas won five consecutive games from Feb. 4 to Feb. 18. It was the longest winning streak since the 2012-13 season. The Mean Green haven't won six games in a row since 2002. During the five game winning streak, North Texas won three consecutive road games, which is the longest road winning streak since 2002.

AD'S CAREER HIGH

Sophomore Adrianna Henderson scored a career-high 16 points at UTSA on Feb. 2 in just 20 minutes on 6-of-10 shooting. She's scored 26 points in the last two games combined.

1,000 POINTS

When including her freshman season at Kansas, Terriell Bradley scored her 1,000th career point on Thursday at FIU in the second quarter on a 3-pointer.

NOVEMBER TO REMEMBER

North Texas won five games before the month of December for only the second time in program history since 1981. The Mean Green fell one win shy of tying the program record for most wins before the month of January. In 2005-06, UNT

7 MIN SHUTOUT

North Texas held Coastal Carolina scoreless for the first seven minutes and 30 seconds of their game on Nov. 23rd.

FRESHMAN OF THE WEEK

Lauren Holmes has been named Conference USA's Freshman of the Week three times this year. She earned her first honor on Dec. 11, again on Jan. 2. and most recently on Feb. 12

ACTIVE TEAM LEADERS

(UNT Stats Only)

POINTS

1. Terriell Bradley	859
2. Micayla Buckner	315
3. Tyara Warren^	233
4. Lauren Holmes	205
5. Grace Goodhart	195

REBOUNDS

1. Terriell Bradley	254
2. Micayla Buckner	224
3. Jada Poland	135
4. Tosin Mabodu^	115
5. Lauren Holmes	106

ASSISTS

1. Terriell Bradley	109
2. Brittany Smith	77
3. Grace Goodhart	57
4. Trena Mims	50
5. Tyara Warren^	35

3FGs

1. Terriell Bradley	80
2. Grace Goodhart	36
3. Lauren Holmes	34
4. Tyara Warren^	17
5. Adrianna Henderson	16

^indicates out with season or career ending injury

ATHLETIC FAMILY

Freshman Deja Terrell is the daughter of former NFL veteran David Terrell who was a safety for the Washington Redskins and Oakland Raiders. Deja Terrell’s mother, Kiana Taylor-Terrell is one of the greatest UTEP women’s basketball players in program history. When she graduated in 1998 she was second in program history in scoring (1,134) and second in rebounds (676). Deja Terrell was also a two-time all-district volleyball player at Life Oak Cliff High School in Dallas.

FRESHMEN WITH A BIGGER ROLE

North Texas freshmen Lauren Holmes, Trena Mims and Deja Terrell have scored this season 205, 137 and 94 points, respectively. Last season, Adrianna Henderson led all Mean Green freshmen in scoring at the end of the year with 67 total points.

1 THROUGH 4

Mean Green redshirt junior Terriell Bradley played the 1-4 positions last year and still does that this year.

IMPROVEMENTS

The Mean Green have improved on their previous season’s record each year under third-year head coach Jalie Mitchell.

Year	Record	Head Coach
14-15	5-24	Petersen
15-16	11-19	Mitchell
16-17	12-19	Mitchell
17-18	14-10	Mitchell

GETTING IN SHAPE

Redshirt junior post Micayla Buckner lost considerable weight this off-season and has made it a point of emphasis to run the court better, shoot the ball and be an all-conference player. The 6-4 post began her 2017-18 campaign with a career-high 12 points on 6-of-8 shooting. Her previous high was 10 points, which she accomplished twice last season. She then scored 20 points versus Texas A&M International in UNT’s second game of the year. She then recorded her first career double-double in their sixth game of the year.

OVERCOMING

Mean Green redshirt junior Terriell Bradley was born with scoliosis. It hasn’t affected her much on the court with exception of one game in 2016 when she could barely walk the night before. Despite struggling to walk, Bradley went on to score 17 points in the game at Arizona and led the team to the road victory.

2017

In the 2017 calendar year UNT posted a 18-13 record. In 2016 UNT was 9-22.

PRESEASON ALL-CONFERENCE

Redshirt junior Terriell Bradley was voted by the C-USA coaches to the eight-player preseason all-conference team. She is the first North Texas women’s basketball player to earn a preseason all-conference nod since 2011 when the Mean Green played in the Sun Belt.

EARLY SIGNEES

North Texas signed two Texas products in the early signing period. The Mean Green have added Jasmyne Robinson of Arlington Bowie High School and Charlene Shepherd of Shoemaker High School in Killeen, Texas. Robinson is a 5-foot-8 guard who is a tremendous shooter. She recently scored her 1,000th career point and was named as the district MVP her sophomore season. Shepherd is a forward who can stretch the court as a shooter. She’s been named alldistrict in both basketball and volleyball.

DOUBLE-DOUBLES

With Terriell Bradley’s double-double at Indiana, North Texas has had three different players record a double-double this season, which is how many they had all of last year.

DOUBLE-DOUBLE COUNT

LAUREN HOLMES:
20 pts, 12 rebs (11/10)

MICAYLA, BUCKNER:
10 pts, 11 rebs (11/29)

TERRIELL BRADLEY:
22 pts, 10 rebs (12/5)

LAUREN HOLMES:
19 pts, 13 rebs (12/30)

MICAYLA BUCKNER:
10 pts, 12 rebs (1/3)

NEW PGs

The point guard position is very important to head coach Jalie Mitchell. She begins the 2017-18 season with two new point guards in freshman Trena Mims and JC transfer Brittany Smith. Last year’s point guards, Kelsey Criner graduated and now-sophomore Adrianna Henderson has moved to off the ball guard but can take the ball up the court to initiate the offense as can Terriell Bradley.

LAUREN HOLMES
FRESHMAN GUARD #33
FAYETTEVILLE, AR.



2017 ARKANSAS FEMALE PREP ATHLETE OF THE YEAR

3.9 HIGH SCHOOL G.P.A.

WORKED TWO JOBS

NINE HIGH SCHOOL STATE TITLES

2X BASKETBALL STATE CHAMPS, 2016 & 2017

VOLLEYBALL STATE CHAMPS, 2017

2X TEAM TRACK&FIELD STATE CHAMPS, 2015, 2017

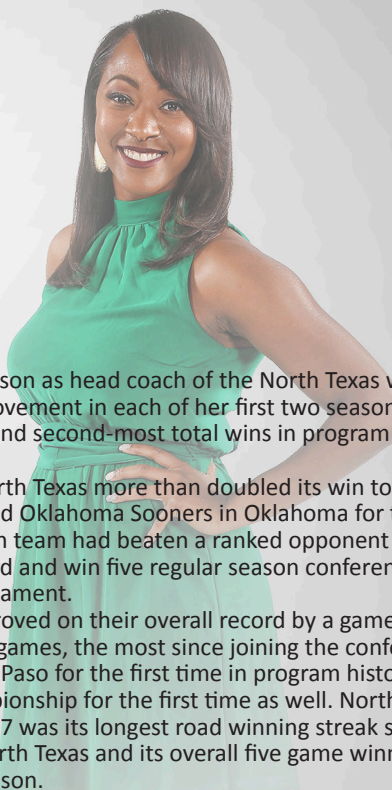
4 INDIVIDUAL TRACK&FIELD STATE CHAMPS

- 100-M STATE CHAMP
- TRIPLE JUMP STATE CHAMP
- LONG JUMP STATE CHAMP
- 4X100 RELAY STATE CHAMP



#PRIDE

JALIE MITCHELL
HEAD COACH



Jalie Mitchell begins her third season as head coach of the North Texas women's basketball team. The Mean Green have seen improvement in each of her first two seasons. She enters her third season with the most road wins and second-most total wins in program history by a coach with two full seasons under their belt.

In her first season in 2015-16, North Texas more than doubled its win total from the previous season and beat the No. 17 ranked Oklahoma Sooners in Oklahoma for their first win of the year. It was the first time a Mean Green team had beaten a ranked opponent in program history. They proceeded to post an 11-19 record and win five regular season conference games and reach the second-round of the C-USA Tournament.

In 2016-17, the Mean Green improved on their overall record by a game and set program records and firsts. They won eight C-USA games, the most since joining the conference in the 2013-14 season. They defeated UTEP in El Paso for the first time in program history and they reached the quarterfinals of the C-USA Championship for the first time as well. North Texas' three-game road winning streak in February of 2017 was its longest road winning streak since the 2001-02 season when Mitchell was a senior at North Texas and its overall five game winning streak in February was the longest since the 2012-13 season.

When hired, Mitchell described North Texas as her dream job. The 2002 Mean Green graduate is the program's greatest player and boasts numerous records as a four-year letter winner. She is the program's all-time leading scorer with 1,764 points and tops the list of career free throws made and attempted. In 2002, Mitchell was named Sun Belt Conference Player of the Year when she averaged 19.4 points per game.

She earned all-conference honors all four years at North Texas and was a part of the winningest senior class in program history, compiling a 77-39 record -- including a 42-4 mark at the Super Pit -- and making back-to-back WNIT appearances in 2001 and 2002. Mitchell's No. 44 is one of two women's basketball numbers that has been retired by the Mean Green and her spectacular playing career culminated in 2007 when she was inducted into the North Texas Athletic Hall of Fame. Under Mitchell, North Texas has had a noticeable increase in offense and defense. In her first season, the Mean Green improved their field goal percentage by 7.23 percent -- the largest improvement in the country. It was also the sixth-highest shooting percentage in North Texas history. In total, the Mean Green averaged nearly 10 more points per game in 2015-16 than the year before. In 2016-17, North Texas held conference opponents to 62.9 points per game and typically held the opposition's leading scorer to 10 or more points below their season average. Prior to becoming the Mean Green's head coach, Mitchell had two stints as an assistant in Denton. Most recently under then head coach Karen Aston for the 2011-12 campaign. In that campaign, the team went 15-16.

When Aston left the Mean Green to coach the University of Texas in 2012, Mitchell followed. In her three seasons at Texas, the team combined for a 60-41 overall record. The Longhorns made the NCAA Tournament field the last two seasons, including a Sweet 16 appearance in 2015 -- their first since 2008. Mitchell began her collegiate coaching career in 2008 as an assistant coach with the Mean Green under Shanice Stephens. She spent two seasons at North Texas under Stephens before taking on the same position at UNC-Wilmington for the 2010-11 season. Mitchell helped the Seahawks finish with a 24-9 record and reach the second round of the WNIT, both program bests. In addition to the North Texas Athletics Hall of Fame, Mitchell was inducted into the Duncanville ISD Athletic Hall of Honor in October of 2015.

#PRIDE

Mitchell Quick Facts

- Age: 37
- Alma Mater: North Texas '02
- UNT Record: 37-48 (Third season)
- All-Time Record: 37-48 (Third season)
- Non-Conference: 17-16
- C-USA Record: 20-32
- Home Record: 20-20
- Away Record: 13-24
- Neutral Record: 4-4
- Overtime Record: 5-2
- vs. Power-Five: 2-4

North Texas All-Time Coaching Wins

Tina Slinker.....	241
Judy Nelson	66
Cherri Rapp.....	43
<i>Jalie Mitchell</i>	<i>37</i>
Denise Smith.....	33
Mike Petersen.....	28
Shanice Stephens	25
Karen Aston.....	15

Mitchell Coaching Experience

- 2015- North Texas Head Coach
- 2012-15 Texas Asst. Coach
- 2011-12 North Texas Asst. Coach
- 2010-11 UNC-Wilmington Asst. Coach
- 2008-10 North Texas Asst. Coach

Mitchell Playing Experience

- 1998-2002 North Texas
- * Mean Green's all-time leading scorer
- * Four-year all-conference player
- * Winningest senior class in program history
- * 2002 Sun Belt Conference Player of the Year
- * Back-to-Back WNIT appearances (2001-02)

Career Accolades

- * Had her number (44) retired at North Texas
- * Was inducted into the North Texas Athletics Hall of Fame in 2007
- * Was inducted into the Duncanville ISD Athletic Hall of Honor in October of 2015

ROSTER

No.	Name	Pos.	Ht.	Class	Hometown	Previous School
0	Callie Owens [^]	Guard	5-10	SO	Plano, TX	Pacific
1	Tyara Warren	Guard	5-9	RS JR	Plano, TX	West Virginia University
2	Grace Goodhart	Guard	5-9	JR	Sunnyvale, TX	Loyola University Chicago
3	Brittany Smith	Point Guard	5-6	JR	Houston, TX	South Plains College
10	Adrianna Henderson	Guard	5-8	SO	Topeka, KS	Topeka High School
12	Jada Poland	Forward	6-0	SO	St. Louis, MO	Ft. Zumwalt West High School
13	Orianna Shillow	Guard	5-8	JR	Round Rock, TX	Stony Point High School
15	Hannah Hopkins	Post	6-3	SO	Humble, TX	Atascocita High School
21	Deja Terrell	Forward	6-1	FR	Oak Cliff, TX	Life Oak Cliff High School
23	Terriell Bradley	Guard	5-10	RS JR	New Orleans, LA	University of Kansas
24	Trena Mims	Point Guard	5-5	FR	Muskogee, OK	Muskogee High School
30	Tosin Mabodu	Post	6-1	SR	Chicago, IL	Murray State College
33	Lauren Holmes	Guard	5-9	FR	Fayetteville, AR	Fayetteville High School
34	Micayla Buckner	Post	6-4	RS JR	Garland, TX	Collin College
41	Madison Townley	Forward	6-0	SO	Duncanville, TX	Duncanville High School

Head Coach: Jalie Mitchell (3rd season)

Associate Head Coach: Bobby Brasel (3rd season)

Assistant Coaches: Carlos Knox (1st season), Kasondra Foreman (3rd season)

[^] Redshirting

PRONUNCIATION GUIDE

Callie Owens	cal-EE
Tyara Warren	ty-air-uh
Adrianna Hederson	a-dre-AHN-nuh
Jada Poland	jay-duh
Orianna Shillow	or-ee-ahn-nuh shy-low
Deja Terrell	dae-juh ter-rel
Terriell Bradley	ter-ree-el
Micayla Buckner	mih-kay-luh
Jalie Mitchell	jay-lee
Bobby Brasel	braz-el (rhymes with razzle)

PROJECTED MEAN GREEN STARTING LINEUP



BRITTANY
SMITH

PG, 5-6, JR
Houston, TX

South Plains College

PPG: 5.6

RPG: 2.7

APG: 3.5

Starts: 20



TRENA
MIMS

PG, 5-5, FR
Muskogee, OK

Muskogee HS

PPG: 5.7

RPG: 2.8

APG: 2.0

Starts: 18



GRACE
GOODHART

G, 5-9, JR
Sunnyvale, TX

Loyola Univ. Chicago

PPG: 5.5

RPG: 1.8

3FG%: 29

Starts: 14



TERRIELL
BRADLEY

G/F, 5-10, R-JR
New Orleans, LA

Univ. of Kansas

PPG: 19.2

RPG: 5.8

3FG%: 45

Starts: 53



MICAYLA
BUCKNER

P, 6-4, R-JR
Garland, TX

Collin College

PPG: 7.5

RPG: 5.6

BPG: 1.2

Starts: 30

PLAYER PROFILES



2 GRACE GOODHART
 5-9, JR. GUARD, SUNNYVALE, TX
 LOYOLA UNIV. CHICAGO
 SUNNYVALE HIGH SCHOOL

2017-18 SEASON HIGHS **UNT CAREER HIGHS**
 PTS: 16 (at E. Illinois, 12/20/17) PTS: 16 (at E. Illinois, 12/20/17)
 REBS: 5 (vs. MACU, 11/10/17) REBS: 5 (vs. MACU, 11/10/17)
 ASTS: 6 (vs. Charlotte, 1/14/18) ASTS: 6 (vs. Charlotte, 1/14/18)
 STLS: 5 (vs. Coastal Carolina (11/23/17)) STLS: 5 (vs. Coastal Carolina (11/23/17))
 3FGs: 4 (vs. Charlotte, 1/14/18) 3FGs: 4 (vs. Charlotte, 1/14/18)

BIO BLAST

- **Nickname: "GG" or "Double G"**
- **Played her freshman season at Loyola Univ. Chicago**
- **Younger brother "Cash" plays football at Princeton**
- **Enjoys country music**
- **Favorite musician is Chris Young**
- **Her dog's name is "Dirk" and is named after Dirk Nowitzki**
- **Named the Texas State 3A Championship MVP after leading Sunnyvale High School to a state title in 2014-15.**



Opponent	Date	gs	min	Total		3-Pointers		Free throws		Rebounds				pf	a	t/o	blk	stl	pts	avg	
				fg-fga	pct	3fg-fga	pct	ft-fa	pct	off	def	tot	avg								
MACU	11/10/1	*	29	4-9	.444	1-4	.250	0-1	.000	0	5	5	0	2	4	1	0	0	9	9.0	
TEXAS A&M INTERNATI	11/14/1	*	30	3-9	.333	1-7	.143	2-2	1.00	0	2	2	3.5	2	3	5	0	4	9	9.0	
K-STATE	11/19/1	*	16	1-2	.500	1-2	.500	0-0	.000	0	0	0	2.3	4	0	1	0	0	3	7.0	
vs COASTAL CAROLIN	11/23/1	*	32	4-11	.364	2-6	.333	0-0	.000	0	1	1	2.0	2	3	0	0	5	10	7.8	
vs DETROIT	11/24/1	*	10	2-6	.333	1-4	.250	0-0	.000	0	3	3	2.2	0	0	0	0	0	5	7.2	
SMU	11/29/1	*	10	2-2	1.00	1-1	1.00	0-0	.000	0	0	0	1.8	2	0	2	1	0	5	6.8	
TULSA	12/2/17		20	0-3	.000	0-2	.000	0-0	.000	0	3	3	2.0	1	2	1	0	1	0	5.9	
at Indiana	12-5-17		14	0-3	.000	0-2	.000	0-0	.000	0	1	1	1.9	3	1	0	0	1	0	5.1	
LA SALLE	12/09/1		18	2-4	.500	1-2	.500	0-0	.000	0	0	0	1.7	1	1	0	0	0	5.1		
at UIC	12/18/1		33	3-6	.500	1-4	.250	0-0	.000	0	2	2	1.7	1	2	3	0	3	7	5.3	
at Eastern Illinois	12/20/1	*	45	4-11	.364	3-6	.500	5-5	1.00	0	3	3	1.8	2	0	4	1	1	16	6.3	
OKLAHOMA PANHANDL	12/30/1		18	0-9	.000	0-7	.000	0-0	.000	1	1	2	1.8	0	0	0	0	0	0	5.8	
at Louisiana Tech	01/03/1		18	1-3	.333	0-1	.000	1-2	.500	0	4	4	2.0	4	1	2	0	1	3	5.5	
RICE	1/5/18	*	19	1-3	.333	1-3	.333	0-0	.000	0	0	0	1.9	3	2	2	0	0	3	5.4	
OLD DOMINION	1/11/18	*	27	2-9	.222	1-6	.167	0-0	.000	1	2	3	1.9	3	1	0	0	2	5	5.3	
CHARLOTTE	1/13/18	*	29	4-8	.500	4-6	.667	2-2	1.00	0	2	2	1.9	0	6	2	0	2	14	5.9	
at Middle Tennessee	01/18/1	*	22	2-10	.200	2-7	.286	2-4	.500	0	1	1	1.9	1	1	3	0	0	8	6.0	
at UAB	01/20/1	*	23	2-4	.500	1-2	.500	0-0	.000	0	0	0	1.8	2	1	0	0	1	5	5.9	
WESTERN KENTUCKY	1/26/18		15	1-2	.500	0-1	.000	0-0	.000	0	0	0	1.7	2	0	3	0	0	2	5.7	
UTEP	1/28/18		2	0-0	.000	0-0	.000	0-2	.000	0	0	0	1.6	1	0	0	0	0	0	5.5	
at UTSA	2/2/18		21	2-7	.286	0-2	.000	0-0	.000	0	2	2	1.6	0	1	0	0	0	4	5.4	
at FIU	02/08/1	*	26	4-8	.500	2-4	.500	0-0	.000	0	4	4	1.7	0	4	0	0	1	10	5.6	
at Florida Atlantic	02/10/1	*	19	1-3	.333	1-2	.500	1-2	.500	0	2	2	1.7	2	0	0	0	1	4	5.5	
SOUTHERN MISS	2/15/18	*	29	1-4	.250	1-4	.250	1-2	.500	0	3	3	1.8	1	3	2	0	2	4	5.5	
Totals			14	525	46-136	.338	25-85	.294	14-22	.636	2	41	43	1.8	39	36	31	2	25	131	5.5

Games played: 24
 Minutes/game: 21.9
 Points/game: 5.5
 FG Pct: 33.8
 3FG Pct: 29.4
 FT Pct: 63.6
 Rebounds/game: 1.8
 Assists/game: 1.5
 Turnovers/game: 1.3
 Assist/turnover ratio: 1.2
 Steals/game: 1.0
 Blocks/game: 0.1

Season	gp-gs	min/avg	Total		3-Point		F-Throws		Rebounds				Scoring							
			fg-fga	pct	fg-fga	pct	ft-fa	pct	off	def	tot	avg	pf	fo	ast	to	blk	stl	pts	avg
2016-17	28-1	318/11.4	21-101	.208	11-56	.196	11-20	.550	2	20	22	0.8	32	0	21	19	1	6	64	2.3
2017-18	24-14	525/21.9	46-136	.338	25-85	.294	14-22	.636	2	41	43	1.8	39	0	36	31	2	25	131	5.5
TOTAL	52-15	843/16.2	67-237	.283	36-141	.255	25-42	.595	4	61	65	1.3	71	0	57	50	3	31	195	3.8

PLAYER PROFILES



3

BRITTANY SMITH

5-6, JR. POINT GUARD, HOUSTON, TX
SOUTH PLAINS COLLEGE
SPRING HIGH SCHOOL

2017-18 SEASON HIGHS

UNT CAREER HIGHS

PTS: 12 (2x, last vs. UTEP, 1/28/18) PTS: 12 (2x, last vs. UTEP, 1/28/18)
REBS: 10 (at E. Illinois, 12/20/17) REBS: 10 (at E. Illinois, 12/20/17)
ASTS: 10 (at FIU, 2/9/18) ASTS: 10 (at FIU, 2/9/18)
STLS: 3 (vs. Charlotte, 1/14/18) STLS: 3 (vs. Charlotte, 1/14/18)
3FGs: 2 (2x, last vs. ODU, 1/11/18) 3FGs: 2 (2x, last vs. ODU, 1/11/18)

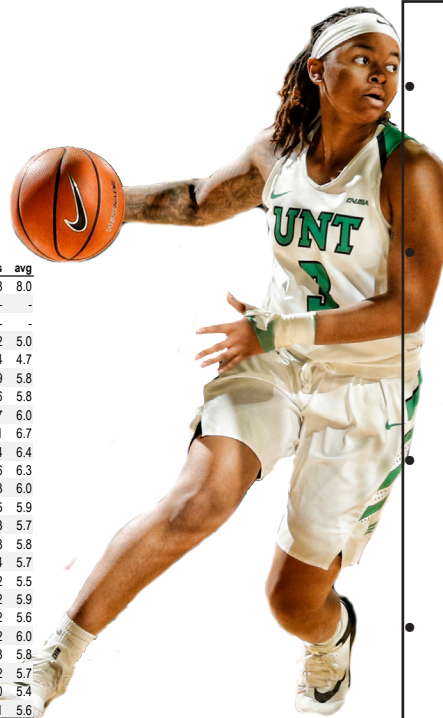
BIO BLAST

- 2017 Western Junior College Conference Defensive Player of the Year

- Had 15 assists on Feb. 23, 2017 against Clarendon College, which was a SPC program record

- Scored a JC career-high 22 points vs. Midland College on Feb. 2, 2017

- Led the Lady Texans to the second round of the 32-team NJCAA Tournament and a 28-6 record



Opponent	Date	gs	min	Total		3-Pointers		Free throws		Rebounds			pf	a	t/o	blk	stl	pts	avg		
				fg-fga	pct	3fg-fga	pct	ft-fa	pct	off	def	tot								avg	
MACU	11/10/1	*	23	2-5	.400	2-2	1.00	2-2	1.00	0	1	1	1.0	2	1	1	0	2	8	8.0	
TEXAS A&M INTERNATI	11/14/1		dnp	-	-	-	-	-	-	-	-	-	-	-	-	-	-	-	-	-	
K-STATE	11/19/1		dnp	-	-	-	-	-	-	-	-	-	-	-	-	-	-	-	-	-	
vs COASTAL CAROLIN	11/23/1		23	1-6	.167	0-2	.000	0-0	.000	0	1	1	1.0	1	4	5	0	2	2	5.0	
vs DETROIT	11/24/1		29	0-4	.000	0-0	.000	4-6	.667	1	1	2	1.3	5	6	1	1	1	4	4.7	
SMU	11/29/1	*	30	3-5	.600	1-2	.500	2-2	1.00	0	4	4	2.0	2	1	4	0	0	9	5.8	
TULSA	12/2/17	*	26	2-4	.500	1-2	.500	1-2	.500	0	2	2	2.0	3	3	2	0	1	6	5.8	
at Indiana	12-5-17	*	28	3-5	.600	1-1	1.00	0-0	.000	0	1	1	1.8	4	0	2	0	2	7	6.0	
LA SALLE	12/09/1	*	28	3-7	.429	1-2	.500	4-4	1.00	0	1	1	1.7	2	3	2	1	2	11	6.7	
at UIC	12/18/1	*	29	2-6	.333	0-2	.000	0-2	.000	0	1	1	1.6	4	6	4	0	1	4	6.4	
at Eastern Illinois	12/20/1	*	35	2-7	.286	0-2	.000	2-4	.500	4	6	10	2.6	5	1	5	0	0	6	6.3	
OKLAHOMA PANHANDL	12/30/1	*	28	1-2	.500	0-1	.000	1-2	.500	2	4	6	2.9	0	4	0	0	1	3	6.0	
at Louisiana Tech	01/03/1	*	32	1-2	.500	0-0	.000	3-4	.750	0	2	2	2.8	4	7	4	0	1	5	5.9	
RICE	1/5/18	*	34	1-6	.167	0-0	.000	1-2	.500	2	3	5	3.0	3	3	0	0	0	3	5.7	
OLD DOMINION	1/11/18	*	24	3-9	.333	2-5	.400	0-0	.000	2	1	3	3.0	0	5	1	0	1	8	5.8	
CHARLOTTE	1/13/18	*	34	2-6	.333	0-0	.000	0-2	.000	0	3	3	3.0	2	7	4	0	3	4	5.7	
at Middle Tennessee	01/18/1	*	34	0-0	.000	0-0	.000	2-2	1.00	0	3	3	3.0	3	2	2	0	0	2	5.5	
at UAB	01/20/1	*	30	4-9	.444	1-3	.333	3-4	.750	0	6	6	3.2	3	2	3	1	0	12	5.9	
WESTERN KENTUCKY	1/26/18	*	32	1-5	.200	0-0	.000	0-0	.000	1	3	4	3.2	4	3	4	0	2	2	5.6	
UTEP	1/28/18	*	30	5-10	.500	1-2	.500	1-3	.333	0	1	1	3.1	0	2	1	0	0	12	6.0	
at UTSA	2/2/18	*	24	1-6	.167	0-2	.000	1-5	.200	0	0	0	2.9	3	2	1	0	1	3	5.8	
at FIU	02/08/1	*	26	1-5	.200	0-1	.000	0-0	.000	1	1	2	2.9	0	10	0	0	1	2	5.7	
at Florida Atlantic	02/10/1	*	26	0-3	.000	0-0	.000	0-0	.000	0	1	1	2.8	4	2	4	0	0	0	5.4	
SOUTHERN MISS	2/15/18	*	34	3-6	.500	1-2	.500	4-5	.800	0	0	0	2.7	2	3	1	0	2	11	5.6	
Totals			20	639	41-118	.347	11-31	.355	31-51	.608	13	46	59	2.7	56	77	51	3	23	124	5.6

Games played: 22
Minutes/game: 29.0
Points/game: 5.6
FG Pct: 34.7
3FG Pct: 35.5
FT Pct: 60.8

Rebounds/game: 2.7
Assists/game: 3.5
Turnovers/game: 2.3
Assist/turnover ratio: 1.5
Steals/game: 1.0
Blocks/game: 0.1

Season	gp-gs	min/avg	Total		3-Point		F-Throws		Rebounds				Scoring							
			fg-fga	pct	fg-fga	pct	ft-fa	pct	off	def	tot	avg	pf	fo	ast	to	blk	stl	pts	avg
2017-18	22-20	639/29.0	41-118	.347	11-31	.355	31-51	.608	13	46	59	2.7	56	2	77	51	3	23	124	5.6
TOTAL	22-20	639/29.0	41-118	.347	11-31	.355	31-51	.608	13	46	59	2.7	56	2	77	51	3	23	124	5.6

PLAYER PROFILES

10 ADRIANNA HENDERSON
5-8, SOPH. GUARD, TOPEKA, KS.
TOPEKA HIGH SCHOOL



2017-18 SEASON HIGHS **UNT CAREER HIGHS**
 PTS: 16 (at UTSA, 2/2/18) PTS: 16 (at UTSA, 2/2/18)
 REBS: 5 (3X last at FIU, 2/8/18) REBS: 5 (3X last at FIU, 2/8/18)
 ASTS: 2 (at Middle Tenn, 1/18/18) ASTS: 4 (2x, last at S. Miss, 2/25/17)
 STLS: 3 (at FIU, 2/9/18) STLS: 3 (at FIU, 2/9/18)
 3FGs: 2 (at UTSA, 2/2/18) 3FGs: 2 (2x, last at UTSA, 2/2/18)

BIO BLAST

- **Nickname: "AD"**
- **Tallied 1,248 points in high school and led the city in scoring as a junior (22.1 ppg) and as a senior (21.6)**
- **Four-time All-Topeka Honoree**
- **Right-handed but prefers finishing with her left**
- **Has nine sisters and Adrianna is the only one whose last name doesn't end in the letter "L"**



Opponent	Date	gs	min	Total		3-Pointers		Free throws		Rebounds			pf	a	t/o	blk	stl	pts	avg	
				fg-fga	pct	3fg-fga	pct	ft-fa	pct	off	def	tot								avg
MACU	11/10/1	9	0-1	.000	0-0	.000	0-0	.000	0	1	1	1	0	1	1	1	0	0	0	
TEXAS A&M INTERNATI	11/14/1	13	1-3	.333	0-1	.000	1-2	.500	1	2	3	2	1	0	1	0	0	3	1.5	
K-STATE	11/19/1	20	2-5	.400	1-2	.500	0-0	.000	0	1	1	1	7	5	1	3	0	1	5	2.7
vs COASTAL CAROLIN	11/23/1	5	0-0	.000	0-0	.000	0-0	.000	0	1	1	1	1	1	2	0	0	0	2.0	
vs DETROIT	11/24/1	22	4-11	.364	0-2	.000	1-1	1.00	2	2	4	2	0	3	0	2	0	1	9	3.4
SMU	11/29/1	7	1-3	.333	1-3	.333	0-0	.000	0	1	1	1	8	0	0	1	0	1	3	3.3
TULSA	12/2/17	15	0-1	.000	0-1	.000	1-2	.500	3	2	5	2	3	2	1	1	0	0	1	3.0
at Indiana	12-5-17	16	2-2	1.00	1-1	1.00	2-2	1.00	0	1	1	2	1	2	1	2	0	1	7	3.5
LA SALLE	12/09/1	18	0-4	.000	0-0	.000	4-4	1.00	4	1	5	2	4	1	0	0	0	2	4	3.6
at UIC	12/18/1	2	0-0	.000	0-0	.000	0-0	.000	0	0	0	2	2	0	0	0	0	0	0	3.2
at Eastern Illinois	12/20/1	dnp	-	-	-	-	-	-	-	-	-	-	-	-	-	-	-	-	-	-
OKLAHOMA PANHANDL	12/30/1	19	2-4	.500	1-1	1.00	1-2	.500	0	0	0	2	0	1	0	0	0	1	6	3.5
at Louisiana Tech	01/03/1	6	1-2	.500	1-1	1.00	0-0	.000	1	1	2	2	0	2	0	0	0	3	3.4	
RICE	1/5/18	9	1-3	.333	0-1	.000	0-0	.000	1	3	4	2	0	0	0	0	0	2	3.3	
OLD DOMINION	1/11/18	15	2-5	.400	1-4	.250	2-2	1.00	1	1	2	2	1	0	3	0	2	7	3.6	
CHARLOTTE	1/13/18	9	2-2	1.00	0-0	.000	0-0	.000	0	0	0	2	0	1	0	0	0	4	3.6	
at Middle Tennessee	01/18/1	16	1-2	.500	0-0	.000	0-0	.000	0	1	1	1	9	2	2	1	0	1	2	3.5
at UAB	01/20/1	12	0-3	.000	0-2	.000	2-4	.500	0	0	0	1	8	2	0	1	0	0	2	3.4
WESTERN KENTUCKY	1/26/18	12	1-6	.167	0-3	.000	2-2	1.00	0	1	1	1	8	2	0	4	0	0	4	3.4
UTEP	1/28/18	6	0-1	.000	0-0	.000	0-0	.000	0	0	0	1	7	1	0	1	0	0	0	3.3
at UTSA	2/2/18	20	6-10	.600	2-3	.667	2-3	.667	2	1	3	1	8	3	0	0	0	1	16	3.9
at FIU	02/08/1	19	5-7	.714	0-1	.000	0-1	.000	2	3	5	1	9	3	2	0	0	3	10	4.2
at Florida Atlantic	02/10/1	21	3-6	.500	1-2	.500	1-2	.500	0	2	2	1	9	0	0	0	0	0	8	4.4
SOUTHERN MISS	2/15/18	6	0-0	.000	0-0	.000	2-4	.500	0	2	2	1	9	0	0	1	0	0	2	4.3
Totals		0	297	34-81	.420	9-28	.321	21-31	.677	17	27	44	1.9	33	9	26	1	15	98	4.3

Games played: 23 Rebounds/game: 1.9
 Minutes/game: 12.9 Assists/game: 0.4
 Points/game: 4.3 Turnovers/game: 1.1
 FG Pct: 42.0 Assist/turnover ratio: 0.3
 3FG Pct: 32.1 Steals/game: 0.7
 FT Pct: 67.7 Blocks/game: 0.0

Season	gp-gs	min/avg	Total		3-Point		F-Throws		Rebounds				Scoring							
			fg-fga	pct	fg-fga	pct	ft-fa	pct	off	def	tot	avg	pf	fo	ast	to	blk	stl	pts	avg
2016-17	18-0	177/9.8	21-45	.467	7-11	.636	18-24	.750	4	12	16	0.9	19	0	21	32	2	10	67	3.7
2017-18	23-0	297/12.9	34-81	.420	9-28	.321	21-31	.677	17	27	44	1.9	33	1	9	26	1	15	98	4.3
TOTAL	41-0	474/11.6	55-126	.437	16-39	.410	39-55	.709	21	39	60	1.5	52	1	30	58	3	25	165	4.0

PLAYER PROFILES

12 JADA POLAND

6-0, SOPH. FORWARD, ST. LOUIS, MO
FT. ZUMWALT WEST HIGH SCHOOL



2017-18 SEASON HIGHS

PTS: 8 (vs. MACU, 11/10/17)
REBS: 10 (vs. WKU, 1/26/18)
ASTS: 2 (vs. TAMIU, 11/14/17)
STLS: 3 (2x, last vs. Coastal Carolina, 11/23/17)
BLKS: 2 (2x, last vs. UTSA, 2/2/18)

UNT CAREER HIGHS

PTS: 8 (2x, last vs. MACU, 11/10/17)
REBS: 10 (2x, last vs. WKU, 1/26/18)
ASTS: 2 (vs. TAMIU, 11/14/17)
STLS: 4 (vs. Marshall, 3/5/17)
BLKS: 2 (2x, last vs. UTSA, 2/2/18)

BIO BLAST

- Graduated as the all-time leading scorer at Ft. Zumwalt West High School with more than 1,400 points
- Set her high school program record with 40 points vs. Metro High
- Close friends with freshman Deja Terrell
- The team's trip to Daytona Beach, FL. was her first time ever seeing the ocean
- Voted most funny and best dancer on the team
- Made her first career start on Jan. 26 vs. WKU



Opponent	Date	gs	min	Total		3-Pointers		Free throws		Rebounds				pts	avg					
				fg-fga	pct	3fg-fga	pct	ft-fa	pct	off	def	tot	avg							
MACU	11/10/17	17	4-6	.667	0-1	.000	0-0	.000	1	3	4	0	1	0	2	1	8	8.0		
TEXAS A&M INTERNATI	11/14/17	26	0-2	.000	0-0	.000	1-2	.500	2	6	8	6	0	3	2	0	1	4.5		
K-STATE	11/19/17	22	1-2	.500	0-0	.000	0-0	.000	0	8	8	6	7	3	0	1	0	3.7		
vs COASTAL CAROLIN	11/23/17	19	1-2	.500	0-0	.000	0-0	.000	0	1	1	5	3	1	0	2	1	3.3		
vs DETROIT	11/24/17	16	0-4	.000	0-0	.000	0-2	.000	3	1	4	5	0	4	0	2	0	2.6		
SMU	11/29/17	12	0-2	.000	0-0	.000	0-0	.000	1	2	3	4	7	2	0	1	0	2.2		
TULSA	12/2/17	13	0-1	.000	0-0	.000	1-2	.500	1	3	4	6	3	0	2	0	0	2.0		
at Indiana	12-5-17	6	0-1	.000	0-0	.000	1-2	.500	1	3	4	5	2	1	0	0	0	1.9		
LA SALLE	12/09/17	7	0-2	.000	0-0	.000	3-4	.750	0	3	3	4	3	1	0	0	0	3.2		
at UIC	12/18/17	5	0-2	.000	0-1	.000	0-0	.000	2	1	3	4	2	0	0	0	0	1.8		
at Eastern Illinois	12/20/17	9	1-1	1.00	0-0	.000	0-0	.000	0	0	0	3	8	2	1	0	1	2.8		
OKLAHOMA PANHANDL	12/30/17	10	1-2	.500	0-0	.000	1-2	.500	0	0	0	3	5	2	0	1	0	3.9		
at Louisiana Tech	01/03/18	1	0-0	.000	0-0	.000	0-0	.000	0	0	0	3	2	0	0	0	0	1.8		
RICE	1/5/18	3	0-0	.000	0-0	.000	1-2	.500	1	0	1	3	1	0	0	0	0	1.7		
OLD DOMINION	1/11/18	10	0-1	.000	0-0	.000	5-10	.500	2	3	5	3	2	4	0	0	1	5.9		
CHARLOTTE	1/13/18	10	1-2	.500	0-0	.000	0-0	.000	0	1	1	3	1	2	1	0	0	2.9		
at Middle Tennessee	01/18/18	16	1-2	.500	1-1	1.00	0-0	.000	0	2	2	3	0	2	0	0	1	3.2		
at UAB	01/20/18	14	0-0	.000	0-0	.000	0-2	.000	1	1	2	2	9	4	0	2	0	1.9		
WESTERN KENTUCKY	1/26/18	34	2-5	.400	0-0	.000	0-0	.000	2	8	10	3	3	3	0	1	0	4.2		
UTEP	1/28/18	33	3-4	.750	0-1	.000	1-2	.500	1	5	6	3	5	0	1	3	1	7.3		
at UTSA	2/2/18	18	1-1	1.00	0-0	.000	0-0	.000	3	3	6	3	6	5	0	1	2	2.2		
at FIU	02/08/18	13	2-6	.333	1-2	.500	1-2	1.00	2	2	4	3	6	1	1	1	0	7.2		
at Florida Atlantic	02/10/18	13	0-2	.000	0-0	.000	0-0	.000	0	1	1	3	5	3	1	2	0	2.3		
SOUTHERN MISS	2/15/18	21	3-4	.750	0-0	.000	0-0	.000	0	1	1	3	4	1	0	1	1	6.2		
Totals		3	348	21-54	.389	2-6	.333	16-32	.500	23	58	81	3.4	51	8	22	9	13	60	2.5

Games played: 24
Minutes/game: 14.5
Points/game: 2.5
FG Pct: 38.9
3FG Pct: 33.3
FT Pct: 50.0

Rebounds/game: 3.4
Assists/game: 0.3
Turnovers/game: 0.9
Assist/turnover ratio: 0.4
Steals/game: 0.5
Blocks/game: 0.4

Season	gp-gs	min/avg	Total		3-Point		F-Throws		Rebounds				Scoring							
			fg-fga	pct	fg-fga	pct	ft-fa	pct	off	def	tot	avg	pf	fo	ast	to	blk	stl	pts	avg
2016-17	20-0	178/8.9	9-29	.310	0-0	.000	9-13	.692	18	36	54	2.7	21	0	5	12	3	7	27	1.4
2017-18	24-3	348/14.5	21-54	.389	2-6	.333	16-32	.500	23	58	81	3.4	51	1	8	22	9	13	60	2.5
TOTAL	44-3	526/12.0	30-83	.361	2-6	.333	25-45	.556	41	94	135	3.1	72	1	13	34	12	20	87	2.0

PLAYER PROFILES

13 BORIANNA SHILLOW

5-8, JR. GUARD, ROUND ROCK, TX
STONY POINT HIGH SCHOOL



2017-18 SEASON HIGHS

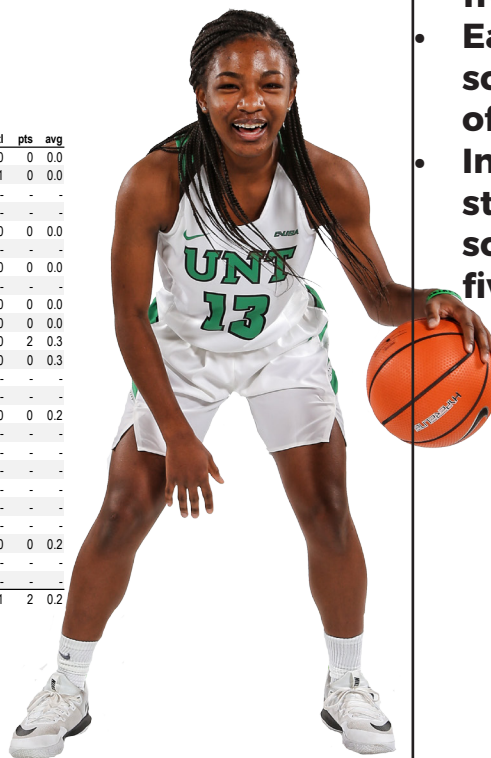
PTS: 2 (at E. Illinois, 12/20/17)
REBS: 1 (vs. OPSU, 12/30/17)
ASTS: 1 (3x, last at FIU, 2/8/18)
STLS: 1 (2x, last UTEP, 1/28/18)
3FGs: N/A

UNT CAREER HIGHS

PTS: 16 (vs. Rice, 1/30/16)
REBS: 2 (vs. Rice, 1/30/16)
ASTS: 2 (at Charlotte, 3/5/16)
STLS: 2 (2x, last at FIU, 2/18/16)
3FGs: 5 (vs. Rice, 1/30/16)

BIO BLAST

- Walked on as a freshman in 2015
- Earned an athletic scholarship in August of 2017
- In her first career start in 2015 she scored 16 points on five 3FGs



Opponent	Date	gs	min	Total		3-Pointers		Free throws		Rebounds				pf	a	t/o	blk	stl	pts	avg
				fg-fga	pct	3fg-fga	pct	ft-fa	pct	off	def	tot	avg							
MACU	11/10/1	13	0-7	.000	0-7	.000	0-0	.000	0	0	0	0	0	0	0	0	0	0	0	0.0
TEXAS A&M INTERNATI	11/14/1	6	0-0	.000	0-0	.000	0-0	.000	0	0	0	0	0	0	0	0	0	0	0	0.0
K-STATE	11/19/1	dnp	-	-	-	-	-	-	-	-	-	-	-	-	-	-	-	-	-	-
vs COASTAL CAROLIN	11/23/1	dnp	-	-	-	-	-	-	-	-	-	-	-	-	-	-	-	-	-	-
vs DETROIT	11/24/1	0	0-0	.000	0-0	.000	0-0	.000	0	0	0	0	0	0	0	0	0	0	0	0.0
SMU	11/29/1	dnp	-	-	-	-	-	-	-	-	-	-	-	-	-	-	-	-	-	-
TULSA	12/2/17	2	0-1	.000	0-1	.000	0-0	.000	0	0	0	0	0	0	0	0	0	0	0	0.0
at Indiana	12-5-17	dnp	-	-	-	-	-	-	-	-	-	-	-	-	-	-	-	-	-	-
LA SALLE	12/09/1	2	0-1	.000	0-1	.000	0-0	.000	0	0	0	0	0	0	0	0	0	0	0	0.0
at UIC	12/18/1	0	0-0	.000	0-0	.000	0-0	.000	0	0	0	0	0	0	0	0	0	0	0	0.0
at Eastern Illinois	12/20/1	21	0-3	.000	0-3	.000	2-2	1.000	0	0	0	0	0	0	0	0	0	0	0	0.3
OKLAHOMA PANHANDL	12/30/1	4	0-2	.000	0-2	.000	0-0	.000	0	1	1	0.1	0	0	0	0	0	0	0	0.3
at Louisiana Tech	01/03/1	dnp	-	-	-	-	-	-	-	-	-	-	-	-	-	-	-	-	-	-
RICE	1/5/18	dnp	-	-	-	-	-	-	-	-	-	-	-	-	-	-	-	-	-	-
OLD DOMINION	1/11/18	2	0-0	.000	0-0	.000	0-0	.000	0	0	0	0.1	0	0	0	0	0	0	0	0.2
CHARLOTTE	1/13/18	dnp	-	-	-	-	-	-	-	-	-	-	-	-	-	-	-	-	-	-
at Middle Tennessee	01/18/1	dnp	-	-	-	-	-	-	-	-	-	-	-	-	-	-	-	-	-	-
at UAB	01/20/1	dnp	-	-	-	-	-	-	-	-	-	-	-	-	-	-	-	-	-	-
WESTERN KENTUCKY	1/26/18	dnp	-	-	-	-	-	-	-	-	-	-	-	-	-	-	-	-	-	-
UTEP	1/28/18	dnp	-	-	-	-	-	-	-	-	-	-	-	-	-	-	-	-	-	-
at UTSA	2/2/18	dnp	-	-	-	-	-	-	-	-	-	-	-	-	-	-	-	-	-	-
at FIU	02/08/1	8	0-3	.000	0-3	.000	0-0	.000	0	0	0	0.1	0	1	1	1	0	0	0	0.2
at Florida Atlantic	02/10/1	dnp	-	-	-	-	-	-	-	-	-	-	-	-	-	-	-	-	-	-
SOUTHERN MISS	2/15/18	dnp	-	-	-	-	-	-	-	-	-	-	-	-	-	-	-	-	-	-
Totals		0	58	0-17	.000	0-17	.000	2-2	1.000	0	1	1	0.1	3	2	1	1	1	2	0.2

Games played: 10
Minutes/game: 5.8
Points/game: 0.2
FG Pct: 0.0
3FG Pct: 0.0
FT Pct: 100.0

Rebounds/game: 0.1
Assists/game: 0.2
Turnovers/game: 0.1
Assist/turnover ratio: 0.20
Steals/game: 0.1
Blocks/game: 0.1

Season	gp-gs	min/avg	Total		3-Point		F-Throws		Rebounds				Scoring							
			fg-fga	pct	fg-fga	pct	ft-fa	pct	off	def	tot	avg	pf	fo	ast	to	blk	stl	pts	avg
2015-16	9-3	105/11.7	8-20	.400	6-17	.353	1-1	1.000	0	3	3	0.3	6	0	3	2	0	4	23	2.6
2016-17	4-0	3/0.8	0-1	.000	0-1	.000	0-0	.000	0	0	0	0.0	0	0	0	0	0	0	0	0.0
2017-18	10-0	58/5.8	0-17	.000	0-17	.000	2-2	1.000	0	1	1	0.1	3	0	2	1	1	1	2	0.2
TOTAL	23-3	166/7.2	8-38	.211	6-35	.171	3-3	1.000	0	4	4	0.2	9	0	5	3	1	5	25	1.1

PLAYER PROFILES

21 **DEJA TERRELL**
6-1, FR. FORWARD, OAK CLIFF, TX
LIFE OAK CLIFF HIGH SCHOOL



2017-18 SEASON HIGHS

PTS: 15 (vs. OPSU, 12/30/17)
REBS: 9 (at FAU, 2/10/18)
ASTS: 1 (4x, last at MTSU. 1/18/17)
STLS: 3 (vs. OPSU, 12/30/17)
BLKS: 3 (at UTSA, 2/2/18)

UNT CAREER HIGHS

PTS: 15 (vs. OPSU, 12/30/17)
REBS: 9 (at FAU, 2/10/18)
ASTS: 1 (4x, last at MTSU. 1/18/17)
STLS: 3 (vs. OPSU, 12/30/17)
BLKS: 3 (at UTSA, 2/2/18)



BIO BLAST

- First girls basketball player from Life Oak Cliff High School to earn a DI scholarship
- Scored a high school career high 41 point on senior day
- Daughter to former Washington Redskins and Oakland Raiders' safety David Terrell
- When her mother Kiana Taylor-Terrell graduated from UTEP, she was 2nd all-time in rebounds and 2nd all-time in points
- McDonald's High School All-American Nominee
- Aspires to be an anesthesiologist

Opponent	Date	gs	min	Total		3-Pointers		Free throws		Rebounds				pf	a	t/o	blk	stl	pts	avg
				fg-fga	pct	3fg-fga	pct	ft-fa	pct	off	def	tot	avg							
MACU	11/10/1	11	0-2	.000	0-1	.000	3-4	.750	2	1	3	3.0	1	0	1	1	0	3	3.0	
TEXAS A&M INTERNATI	11/14/1	14	2-5	.400	0-0	.000	3-5	.600	5	2	7	5.0	2	1	2	0	0	7	5.0	
K-STATE	11/19/1	14	2-4	.500	0-2	.000	0-0	.000	0	2	2	4.0	1	0	2	1	1	4	4.7	
vs COASTAL CAROLIN	11/23/1	19	2-7	.286	1-2	.500	0-2	.000	2	3	5	4.3	2	1	1	2	0	5	4.8	
vs DETROIT	11/24/1	7	0-3	.000	0-0	.000	0-0	.000	4	0	4	4.2	3	0	1	1	1	0	3.8	
SMU	11/29/1	6	1-3	.333	0-1	.000	0-1	.000	0	0	0	3.5	3	0	0	0	0	2	3.5	
TULSA	12/2/17	12	1-1	1.00	0-0	.000	1-2	.500	2	2	4	3.6	4	0	1	0	0	3	3.4	
at Indiana	12-5-17	15	2-4	.500	0-0	.000	0-0	.000	2	3	5	3.8	3	0	1	1	0	4	3.5	
LA SALLE	12/09/1	16	2-5	.400	0-1	.000	1-4	.250	2	0	2	3.6	3	0	2	0	1	5	3.7	
at UIC	12/18/1	6	0-0	.000	0-0	.000	0-0	.000	1	0	1	3.3	1	0	0	0	0	3.3		
at Eastern Illinois	12/20/1	9	1-2	.500	0-0	.000	1-2	.500	1	1	2	3.2	1	1	0	0	0	3.3		
OKLAHOMA PANHANDL	12/30/1	18	6-11	.545	0-1	.000	3-6	.500	3	3	6	3.4	1	0	0	1	3	15	4.3	
at Louisiana Tech	01/03/1	4	0-1	.000	0-0	.000	0-0	.000	0	0	0	3.2	4	0	0	1	0	3.9		
RICE	1/5/18	17	6-7	.857	0-1	.000	2-4	.500	3	1	4	3.2	4	0	2	2	2	14	4.6	
OLD DOMINION	1/11/18	15	0-1	.000	0-1	.000	0-0	.000	0	3	3	3.2	3	0	2	1	0	4.3		
CHARLOTTE	1/13/18	5	0-0	.000	0-0	.000	0-0	.000	0	0	0	3.0	1	0	0	0	0	4.1		
at Middle Tennessee	01/18/1	17	1-2	.500	0-0	.000	0-0	.000	0	2	2	2.9	0	1	2	2	0	2	3.9	
at UAB	01/20/1	10	1-3	.333	0-1	.000	0-0	.000	1	1	2	2.9	2	0	1	0	0	2	3.8	
WESTERN KENTUCKY	1/26/18	5	0-1	.000	0-0	.000	0-0	.000	1	0	1	2.8	2	0	0	0	0	3.6		
UTEP	1/28/18	15	0-1	.000	0-0	.000	1-2	.500	1	1	2	2.8	5	0	1	0	0	1	3.5	
at UTSA	2/2/18	22	2-5	.400	0-0	.000	3-6	.500	4	1	5	2.9	4	0	1	3	3	7	3.7	
at FIU	02/08/1	13	3-6	.500	0-0	.000	0-0	.000	2	3	5	3.0	2	0	2	0	0	6	3.8	
at Florida Atlantic	02/10/1	24	4-9	.444	0-0	.000	3-3	1.00	4	5	9	3.2	3	0	2	2	0	11	4.1	
SOUTHERN MISS	2/15/18	5	0-3	.000	0-1	.000	0-0	.000	0	2	2	3.2	3	0	1	0	0	0	3.9	
Totals		0	299	36-86	.419	1-12	.083	21-41	.512	40	36	76	3.2	58	4	25	18	11	94	3.9

Games played: 24
Minutes/game: 12.5
Points/game: 3.9
FG Pct: 41.9
3FG Pct: 8.3
FT Pct: 51.2

Rebounds/game: 3.2
Assists/game: 0.2
Turnovers/game: 1.0
Assist/turnover ratio: 0.2
Steals/game: 0.5
Blocks/game: 0.8

Season	gp-gs	min/avg	Total		3-Point		F-Throws			Rebounds				Scoring						
			fg-fga	pct	fg-fga	pct	ft-fa	pct	off	def	tot	avg	pf	fo	ast	to	blk	stl	pts	avg
2017-18	24-0	299/12.5	36-86	.419	1-12	.083	21-41	.512	40	36	76	3.2	58	1	4	25	18	11	94	3.9
TOTAL	24-0	299/12.5	36-86	.419	1-12	.083	21-41	.512	40	36	76	3.2	58	1	4	25	18	11	94	3.9

PLAYER PROFILES

23 TERRIELL BRADLEY

5-10, R-JR. G/F, NEW ORLEANS, LA
UNIV. OF KANSAS

MANSFIELD TIMBERVIEW HIGH SCHOOL



2017-18 SEASON HIGHS

PTS: 32 (at FIU, 2/9/18)
REBS: 10 (at Indiana, 12/5/17)
ASTS: 6 (2x, last at UIC, 12/18/17)
STLS: 5 (at E. Illinois 12/20/17)
3FGs: 9 (at FIU, 2/9/18)

UNT CAREER HIGHS

PTS: 32 (at FIU, 2/9/18)
REBS: 13 (vs. FIU, 2/11/17)
ASTS: 6 (2x, last at UIC, 12/18/17)
STLS: 5 (2x, last at E. Illinois 12/20/17)
3FGs: 9 (at FIU, 2/9/18)



BIO BLAST

- Moved from New Orleans to Arlington, Texas, with her mom and two younger sisters after Hurricane Katrina
- Transferred from Kansas after her freshman season
- Nickname: "TB"
- 2017 Preseason All-Conference
- Named C-USA Player of the Week on Jan. 15
- Majoring in finance
- Has a pet chihuahua named "Tank"
- Favorite movie: Who framed Roger Rabbit
- Loves Amy Winehouse

Opponent	Date	gs	min	Total		3-Pointers		Free throws		Rebounds				pf	a	t/o	blk	stl	pts	avg	
				fg-fga	pct	3fg-fga	pct	ft-fa	pct	off	def	tot	avg								
MACU	11/10/1	*	29	8-13	.615	1-4	.250	1-2	.500	2	4	6	6.0	3	6	4	0	1	18	18.0	
TEXAS A&M INTERNATI	11/14/1	*	19	4-14	.286	0-1	.000	0-0	.000	3	0	3	4.5	4	2	0	0	1	8	13.0	
K-STATE	11/19/1	*	39	6-12	.500	2-2	1.00	1-2	.500	1	2	3	4.0	2	2	0	3	15	13.7		
vs COASTAL CAROLIN	11/23/1	*	35	7-13	.538	2-2	1.00	4-5	.800	0	2	2	3.5	0	2	2	0	1	20	15.3	
at DETROIT	11/24/1	*	38	6-12	.500	0-2	.000	10-11	.909	1	7	8	4.4	3	0	2	0	3	22	16.6	
SMU	11/29/1	*	37	3-14	.214	0-5	.000	5-5	1.00	3	2	5	4.5	3	1	1	0	1	11	15.7	
TULSA	12/2/17	*	30	8-13	.615	3-5	.600	4-5	.800	2	2	4	4.4	2	3	2	0	23	16.7		
at Indiana	12-5-17	*	37	9-24	.375	0-4	.000	4-4	1.00	3	7	10	5.1	4	1	6	0	2	22	17.4	
LA SALLE	12/09/1	*	30	3-10	.300	1-2	.500	1-2	.500	2	5	7	5.3	1	2	2	0	2	8	16.3	
at UIC	12/18/1	*	36	7-15	.467	4-7	.571	9-10	.900	2	7	9	5.7	5	6	3	1	1	27	17.4	
at Eastern Illinois	12/20/1	*	45	7-18	.389	0-4	.000	7-9	.778	2	6	8	5.9	2	4	4	0	5	21	17.7	
OKLAHOMA PANHANDL	12/30/1	*	26	3-8	.375	0-2	.000	0-0	.000	1	0	1	5.5	3	2	4	0	3	6	16.8	
at Louisiana Tech	01/03/1	*	39	8-20	.400	3-9	.333	4-5	.800	2	3	5	5.5	0	2	3	0	2	23	17.2	
RICE	1/5/18	*	37	2-12	.167	0-3	.000	9-10	.900	3	4	7	5.6	4	2	1	0	1	13	16.9	
OLD DOMINION	1/11/18	*	33	6-12	.500	4-7	.571	7-9	.778	1	3	4	5.5	0	3	1	0	0	23	17.3	
CHARLOTTE	1/13/18	*	32	6-9	.667	3-5	.600	7-10	.700	3	4	7	5.6	4	2	4	3	3	22	17.6	
at Middle Tennessee	01/18/1	*	38	2-12	.167	1-2	.500	5-6	.833	1	6	7	5.6	2	1	2	0	0	10	17.2	
at UAB	01/20/1	*	38	6-15	.400	1-4	.250	8-9	.889	2	5	7	5.7	2	2	6	1	4	21	17.4	
WESTERN KENTUCKY	1/26/18	*	38	6-16	.375	4-5	.800	13-15	.867	2	4	6	5.7	3	1	4	2	1	29	18.0	
UTEP	1/28/18	*	38	7-18	.389	3-7	.429	5-7	.714	1	3	4	5.7	3	0	1	0	1	22	18.2	
at UTSA	2/2/18	*	34	6-17	.353	1-3	.333	6-8	.750	4	5	9	5.8	4	2	2	0	2	19	18.2	
at FIU	02/08/1	*	32	11-15	.733	9-10	.900	1-2	.500	1	6	7	5.9	3	2	2	1	1	32	18.9	
at Florida Atlantic	02/10/1	*	33	6-12	.500	1-3	.333	7-8	.875	1	4	5	5.8	1	2	1	0	0	20	18.9	
SOUTHERN MISS	2/15/18	*	34	9-18	.500	4-6	.667	4-7	.571	2	3	5	5.8	3	4	1	1	1	26	19.2	
Totals			24	827	146-342	.427	47-104	.452	122-151	.808	45	94	139	5.8	61	54	60	10	39	461	19.2

Games played: 24
Minutes/game: 34.5
Points/game: 19.2
FG Pct: 42.7
3FG Pct: 45.2
FT Pct: 80.8

Rebounds/game: 5.8
Assists/game: 2.3
Turnovers/game: 2.5
Assist/turnover ratio: 0.9
Steals/game: 1.6
Blocks/game: 0.4

Season	gp-gs	min/avg	Total		3-Point		F-Throws		Rebounds				Scoring							
			fg-fga	pct	fg-fga	pct	ft-fa	pct	off	def	tot	avg	pf	fo	ast	to	blk	stl	pts	avg
2016-17	31-29	890/28.7	122-334	.365	33-107	.308	121-154	.786	43	72	115	3.7	92	2	55	89	10	37	398	12.8
2017-18	24-24	827/34.5	146-342	.427	47-104	.452	122-151	.808	45	94	139	5.8	61	1	54	60	10	39	461	19.2
TOTAL	55-53	1717/31.2	268-676	.396	80-211	.379	243-305	.797	88	166	254	4.6	153	3	109	149	20	76	859	15.6

PLAYER PROFILES

24

TRENA MIMS

5-5, FR. POINT GUARD, MUSKOGEE, OK MUSKOGEE HIGH SCHOOL



2017-18 SEASON HIGHS

PTS: 15 (vs. Tulsa, 12/2/17)
 REBS: 6 (2x, last vs. S.Miss, 2/15/18)
 ASTS: 7 (vs. UTEP, 1/28/18)
 STLS: 2 (5x, last at FIU 2/8/18)
 3FGs: 1 (3x, last vs. WKU, 1/26/18)

UNT CAREER HIGHS

PTS: 15 (vs. Tulsa, 12/2/17)
 REBS: 6 (2x, last vs. S.Miss, 2/15/18)
 ASTS: 7 (vs. UTEP, 1/28/18)
 STLS: 2 (5x, last at FIU 2/8/18)
 3FGs: 1 (3x, last vs. WKU, 1/26/18)

BIO BLAST

- Named all-state by three different associations
- 2017 First Team All-Conference
- Vype Oklahoma Basketball Player of the Year Nominee
- Averaged 19.2 ppg as a senior
- All-State Honorable Mention as a junior
- Reached at least the semifinals in her freshman-junior seasons
- Attended the same high school as Mean Green football coach Seth Littrell
- Huge Beyonce fan
- Claims to own the most shoes on the team



Opponent	Date	gs	min	Total		3-Pointers		Free throws		Rebounds				pf	a	t/o	blk	stl	pts	avg
				fg-fga	pct	3fg-fga	pct	ft-fa	pct	off	def	tot	avg							
MACU	11/10/1	17	4-6	.667	0-0	.000	0-0	.000	2	3	5	5.0	4	2	2	0	0	8	8.0	
TEXAS A&M INTERNATI	11/14/1	*	33	4-10	.400	0-1	.000	0-1	.000	0	3	3	4.0	3	2	2	0	2	8	8.0
K-STATE	11/19/1	*	30	5-11	.455	1-1	1.00	0-0	.000	1	1	2	3.3	4	4	2	0	0	11	9.0
vs COASTAL CAROLIN	11/23/1	*	27	3-10	.300	0-1	.000	1-1	1.00	4	2	6	4.0	2	2	0	0	0	7	8.5
vs DETROIT	11/24/1	*	24	0-4	.000	0-2	.000	2-2	1.00	0	2	2	3.6	3	0	0	0	0	2	7.2
SMU	11/29/1	*	29	2-5	.400	0-0	.000	0-2	.000	3	1	4	3.7	1	4	2	0	2	4	6.7
TULSA	12/2/17	*	34	5-8	.625	0-0	.000	5-9	.556	1	1	2	3.4	4	1	0	0	1	15	7.9
at Indiana	12-5-17	*	40	3-7	.429	0-0	.000	3-6	.500	0	1	1	3.1	2	4	3	0	1	9	8.0
LA SALLE	12/09/1	*	27	3-6	.500	0-0	.000	1-2	.500	1	2	3	3.1	1	3	3	0	1	7	7.9
at UIC	12/18/1	*	18	1-4	.250	0-1	.000	0-0	.000	1	3	4	3.2	5	3	3	0	0	2	7.3
at Eastern Illinois	12/20/1	*	32	2-5	.400	0-1	.000	3-4	.750	1	2	3	3.2	3	0	3	0	2	7	7.3
OKLAHOMA PANHANDL	12/30/1	*	29	1-4	.250	0-0	.000	2-2	1.00	2	2	4	3.3	0	1	0	0	2	4	7.0
at Louisiana Tech	01/03/1	*	28	2-4	.500	0-0	.000	0-0	.000	0	1	1	3.1	0	0	1	1	0	4	6.8
RICE	1/5/18	25	0-1	.000	0-0	.000	0-0	.000	1	1	2	3.0	2	0	1	1	0	0	6	6.3
OLD DOMINION	1/11/18	28	0-2	.000	0-1	.000	1-2	.500	1	1	2	2.9	1	1	0	0	0	1	5	5.9
CHARLOTTE	1/13/18	26	5-8	.625	1-2	.500	0-0	.000	0	1	1	2.8	1	2	3	1	0	0	11	6.3
at Middle Tennessee	01/18/1	22	2-6	.333	0-0	.000	0-0	.000	2	0	2	2.8	0	0	0	0	0	0	4	6.1
at UAB	01/20/1	19	1-9	.111	0-1	.000	0-0	.000	1	1	2	2.7	2	3	0	0	1	2	5.9	
WESTERN KENTUCKY	1/26/18	*	37	5-9	.556	1-1	1.00	0-0	.000	1	2	3	2.7	0	6	1	0	0	11	6.2
UTEP	1/28/18	*	32	1-5	.200	0-0	.000	0-0	.000	1	1	2	2.7	3	7	2	0	1	2	6.0
at UTSA	2/2/18	*	26	0-7	.000	0-0	.000	0-0	.000	1	2	3	2.7	2	1	2	0	2	0	5.7
at FIU	02/08/1	*	26	4-7	.571	0-0	.000	0-0	.000	1	2	3	2.7	1	3	0	1	2	8	5.8
at Florida Atlantic	02/10/1	*	29	2-7	.286	0-1	.000	0-0	.000	1	0	1	2.7	4	1	4	0	0	4	5.7
SOUTHERN MISS	2/15/18	*	27	2-3	.667	0-0	.000	2-3	.667	4	2	6	2.8	0	0	2	0	0	6	5.7
Totals		18	665	57-148	.385	3-13	.231	20-34	.588	30	37	67	2.8	48	50	36	4	17	137	5.7

Games played: 24
 Minutes/game: 27.7
 Points/game: 5.7
 FG Pct: 38.5
 3FG Pct: 23.1
 FT Pct: 58.8
 Rebounds/game: 2.8
 Assists/game: 2.1
 Turnovers/game: 1.5
 Assist/turnover ratio: 1.4
 Steals/game: 0.7
 Blocks/game: 0.2

Season	gp-gs	min/avg	Total		3-Point		F-Throws		Rebounds				Scoring							
			fg-fga	pct	fg-fga	pct	ft-fa	pct	off	def	tot	avg	pf	fo	ast	to	blk	stl	pts	avg
2017-18	24-18	665/27.7	57-148	.385	3-13	.231	20-34	.588	30	37	67	2.8	48	1	50	36	4	17	137	5.7
TOTAL	24-18	665/27.7	57-148	.385	3-13	.231	20-34	.588	30	37	67	2.8	48	1	50	36	4	17	137	5.7

PLAYER PROFILES

33

LAUREN HOLMES

5-9, FR. GUARD, FAYETTEVILLE, AR
FAYETTEVILLE HIGH SCHOOL



2017-18 SEASON HIGHS

PTS: 20 (vs. MACU, 11/10/17)
REBS: 13 (vs. OPSU, 12/30/17)
ASTS: 3 (at FIU, 2/9/18)
STLS: 6 (vs. Rice, 1/5/18)
3FGS: 4 (2x, last at FAU, 2/10/18)

UNT CAREER HIGHS

PTS: 20 (vs. MACU, 11/10/17)
REBS: 13 (vs. OPSU, 12/30/17)
ASTS: 3 (at FIU, 2/9/18)
STLS: 6 (vs. Rice, 1/5/18)
3FGS: 4 (2x, last at FAU, 2/10/18)

Opponent	Date	gs	min	Total		3-Pointers		Free throws		Rebounds				pts	avg						
				fg-fga	pct	3fg-fga	pct	ft-fa	pct	off	def	tot	avg			pf	a	u/o	blk	stl	
MACU	11/10/1	*	33	6-15	.400	4-10	.400	4-4	1.00	5	7	12	12.0	2	1	1	0	3	20	20.0	
TEXAS A&M INTERNATI	11/14/1	*	29	4-8	.500	0-3	.000	0-0	.000	3	2	5	8.5	2	1	2	0	4	8	14.0	
K-STATE	11/19/1	*	25	3-9	.333	2-7	.286	0-0	.000	1	6	7	8.0	4	0	1	1	2	8	12.0	
vs COASTAL CAROLIN	11/23/1	*	19	1-6	.167	0-2	.000	0-0	.000	4	2	6	7.5	3	0	2	1	1	2	9.5	
vs DETROIT	11/24/1	*	34	7-14	.500	3-7	.429	2-2	1.00	2	2	4	6.8	2	1	1	0	3	19	11.4	
SMU	11/29/1	*	37	1-13	.077	1-9	.111	0-0	.000	0	0	0	5.7	1	1	0	1	1	3	10.0	
TULSA	12/2/17	*	30	4-18	.222	3-12	.250	0-0	.000	3	4	7	5.9	1	0	1	2	2	11	10.1	
at Indiana	12-5-17	*	24	4-8	.500	1-3	.333	2-3	.667	1	0	1	5.3	3	0	1	0	3	11	10.3	
LA SALLE	12/09/1	*	30	6-14	.429	3-7	.429	2-2	1.00	3	2	5	5.2	1	1	0	0	5	17	11.0	
at UIC	12/18/1	*	34	4-7	.571	1-3	.333	4-4	1.00	2	1	3	5.0	3	2	1	1	1	13	11.2	
at Eastern Illinois	12/20/1	dnp	-	-	-	-	-	-	-	-	-	-	-	-	-	-	-	-	-	-	
OKLAHOMA PANHANDL	12/30/1	*	30	8-18	.444	2-7	.286	1-1	1.00	8	5	13	5.7	3	2	0	2	5	19	11.9	
at Louisiana Tech	01/03/1	*	36	1-15	.067	1-7	.143	2-2	1.00	3	1	4	5.6	4	1	0	1	3	5	11.3	
RICE	1/5/18	*	34	4-16	.250	3-10	.300	0-0	.000	2	2	4	5.5	3	0	0	0	6	11	11.3	
OLD DOMINION	1/11/18	*	24	3-7	.429	2-4	.500	0-0	.000	1	2	3	5.3	2	0	3	1	0	8	11.1	
CHARLOTTE	1/13/18	*	20	2-6	.333	2-5	.400	0-0	.000	1	1	2	5.1	3	0	2	1	0	6	10.7	
at Middle Tennessee	01/18/1	*	22	4-11	.364	0-5	.000	1-2	.500	2	1	3	4.9	3	0	1	0	3	9	10.6	
at UAB	01/20/1	*	31	2-7	.286	0-3	.000	0-0	.000	2	3	5	4.9	1	0	0	1	1	4	10.2	
WESTERN KENTUCKY	1/26/18	dnp	-	-	-	-	-	-	-	-	-	-	-	-	-	-	-	-	-	-	
UTEP	1/28/18		19	0-6	.000	0-4	.000	0-0	.000	2	2	4	4.9	2	0	2	1	1	0	9.7	
at UTSA	2/2/18		17	0-4	.000	0-1	.000	1-2	.500	1	2	3	4.8	3	1	1	0	1	1	9.2	
at FIU	02/08/1		19	2-3	.667	1-2	.500	0-0	.000	0	3	3	4.7	0	3	0	0	2	5	9.0	
at Florida Atlantic	02/10/1		31	6-12	.500	4-9	.444	2-3	.667	3	6	9	4.9	3	0	0	0	3	18	9.4	
SOUTHERN MISS	2/15/18		25	3-8	.375	1-5	.200	0-0	.000	1	2	3	4.8	3	1	0	0	0	7	9.3	
Totals			17	603	75-225	.333	34-125	.272	21-25	.840	50	56	106	4.8	52	15	19	13	50	205	9.3

Games played: 22
Minutes/game: 27.4
Points/game: 9.3
FG Pct: 33.3
3FG Pct: 27.2
FT Pct: 84.0

Rebounds/game: 4.8
Assists/game: 0.7
Turnovers/game: 0.9
Assist/turnover ratio: 0.8
Steals/game: 2.3
Blocks/game: 0.6



BIO BLAST

- Named C-USA Freshman of Week three times
- Has five siblings
- Enjoys kid movies
- Wants to be an anesthesiologist when she grows up
- Claims track and field is her best sport but hates running
- Nickname: "Lo"
- Decided to try volleyball as a senior in high school and led her team to a Arkansas state championship
- Enjoys volunteering and visiting animal shelters in her free time,

Season	gp-gs	min/avg	Total		3-Point		F-Throws		Rebounds				Scoring							
			fg-fga	pct	fg-fga	pct	ft-fa	pct	off	def	tot	avg	pf	fo	ast	to	blk	stl	pts	avg
2017-18	22-17	603/27.4	75-225	.333	34-125	.272	21-25	.840	50	56	106	4.8	52	0	15	19	13	50	205	9.3
TOTAL	22-17	603/27.4	75-225	.333	34-125	.272	21-25	.840	50	56	106	4.8	52	0	15	19	13	50	205	9.3

PLAYER PROFILES

34 MICAYLA BUCKNER

6-4, R-JR. POST, GARLAND, TX

COLLIN COLLEGE

NAAMAN FOREST HIGH SCHOOL



2017-18 SEASON HIGHS

UNT CAREER HIGHS

PTS: 20 (vs. TAMIU, 11/14/17) PTS: 20 (vs. TAMIU, 11/14/17)

REBS: 12 (at LA Tech, 1/3/18) REBS: 12 (at LA Tech, 1/3/18)

ASTS: 1 (7x, last at FIU, 2/8/18) ASTS: 1 (7x, last at FIU, 2/8/18)

STLS: 3 (2x, last at E. Illinois 12/20/17) STLS: 4 (at SMU, 11/30/16)

BLKS: 4 (3x, last vs. OPSU, 12/30/17) BLKS: 4 (3x, last vs. OPSU, 12/30/17)

BIO BLAST

- Began her college career at Baylor but didn't see any playing time
- Nickname: "Cay"
- Loves Chipotle
- Favorite basketball player: Kobe Bryant

Opponent	Date	gs	min	Total		3-Pointers		Free throws		Rebounds				pf	a	t/o	blk	stl	pts	avg	
				fg-fga	pct	3fg-fga	pct	ft-fa	pct	off	def	tot	avg								
MACU	11/10/1	*	19	6-8	.750	0-0	.000	0-2	.000	3	4	7	7.0	4	0	1	1	0	12	12.0	
TEXAS A&M INTERNATI	11/14/1	*	30	9-11	.818	0-0	.000	2-5	.400	2	7	9	8.0	1	0	2	3	2	20	16.0	
K-STATE	11/19/1	*	34	3-10	.300	0-1	.000	0-0	.000	3	7	10	8.7	1	1	2	4	0	6	12.7	
vs COASTAL CAROLIN	11/23/1	*	21	1-3	.333	0-0	.000	0-2	.000	4	2	6	8.0	3	0	1	1	1	2	10.0	
vs DETROIT	11/24/1	*	20	1-5	.200	0-0	.000	0-0	.000	0	3	3	7.0	4	0	2	0	0	2	8.4	
SMU	11/29/1	*	32	5-9	.556	0-0	.000	0-2	.000	0	11	11	7.7	4	0	0	0	0	10	8.7	
TULSA	12/2/17	*	18	2-5	.400	0-0	.000	2-2	1.00	2	2	4	7.1	4	0	2	1	0	6	8.3	
at Indiana	12-5-17	*	20	1-1	.100	0-0	.000	0-0	.000	0	2	2	6.5	2	0	1	1	0	2	7.5	
LA SALLE	12/09/1	*	24	5-13	.385	0-1	.000	0-0	.000	3	3	6	6.4	2	1	2	0	2	10	7.8	
at UIC	12/18/1	*	37	7-11	.636	0-0	.000	0-2	.000	1	7	8	6.6	5	1	3	4	3	14	8.4	
at Eastern Illinois	12/20/1	*	29	2-4	.500	0-0	.000	2-4	.500	3	6	9	6.8	3	0	5	0	3	6	8.2	
OKLAHOMA PANHANDL	12/30/1	*	18	3-7	.429	0-2	.000	1-5	.200	3	1	4	6.6	5	0	2	4	0	7	8.1	
at Louisiana Tech	01/03/1	*	36	5-10	.500	0-0	.000	0-2	.000	4	8	12	7.0	3	0	2	3	1	10	8.2	
RICE	1/5/18	*	22	1-6	.167	0-1	.000	0-0	.000	1	2	3	6.7	2	0	1	2	0	2	7.8	
OLD DOMINION	1/11/18	*	22	2-3	.667	0-0	.000	2-2	1.00	2	0	2	6.4	4	0	2	0	1	6	7.7	
CHARLOTTE	1/13/18	*	35	5-10	.500	0-0	.000	0-0	.000	1	5	6	6.4	3	1	3	0	0	10	7.8	
at Middle Tennessee	01/18/1	*	13	4-5	.800	0-0	.000	0-0	.000	3	1	4	6.2	5	0	2	1	0	8	7.8	
at UAB	01/20/1	*	23	1-5	.200	0-0	.000	2-6	.333	2	2	4	6.1	3	1	3	0	2	4	7.6	
WESTERN KENTUCKY	1/26/18	*	27	6-8	.750	0-0	.000	1-2	.500	4	3	7	6.2	2	0	4	0	0	13	7.9	
UTEP	1/28/18	*	25	1-3	.333	0-1	.000	2-2	1.00	1	2	3	6.0	4	0	1	1	2	4	7.7	
at UTSA	2/2/18	*	18	3-9	.333	0-0	.000	0-2	.000	2	1	3	5.9	4	0	1	0	0	6	7.6	
at FIU	02/08/1	*	18	6-10	.600	0-0	.000	0-0	.000	2	3	5	5.8	3	1	2	2	0	12	7.8	
at Florida Atlantic	02/10/1	*	6	0-1	.000	0-0	.000	0-0	.000	0	1	1	5.6	1	1	1	0	0	0	7.5	
SOUTHERN MISS	2/15/18	*	19	4-9	.444	0-0	.000	1-2	.500	3	2	5	5.6	5	0	1	1	1	9	7.5	
Totals			24	566	83-166	.500	0-6	.000	15-42	.357	49	85	134	5.6	77	7	46	29	18	181	7.5

Games played: 24
 Minutes/game: 23.6
 Points/game: 7.5
 FG Pct: 50.0
 3FG Pct: 0.0
 FT Pct: 35.7
 Rebounds/game: 5.6
 Assists/game: 0.3
 Turnovers/game: 1.9
 Assist/turnover ratio: 0.2
 Steals/game: 0.8
 Blocks/game: 1.2

Season	gp-gs	min/avg	Total		3-Point		F-Throws			Rebounds				Scoring						
			fg-fga	pct	fg-fga	pct	ft-fa	pct	off	def	tot	avg	pf	fo	ast	to	blk	stl	pts	avg
2016-17	30-6	432/14.4	59-126	.468	0-0	.000	16-34	.471	37	53	90	3.0	80	1	3	46	13	19	134	4.5
2017-18	24-24	566/23.6	83-166	.500	0-6	.000	15-42	.357	49	85	134	5.6	77	4	7	46	29	18	181	7.5
TOTAL	54-30	998/18.5	142-292	.486	0-6	.000	31-76	.408	86	138	224	4.1	157	5	10	92	42	37	315	5.8

2017-18 Team Leaders

Points	G	Pts	Pts/G
BRADLEY, Terriell	24	461	19.2
HOLMES, Lauren	22	205	9.3
BUCKNER, Micayla	24	181	7.5
MIMS, Trena	24	137	5.7
GOODHART, Grace	24	131	5.5
SMITH, Brittany	22	124	5.6
HENDERSON, Adrianna	23	98	4.3
TERRELL, Deja	24	94	3.9
POLAND, Jada	24	60	2.5
SHILLOW, Orianna	10	2	0.2

FG Percentage	FG	Att	Pct
BUCKNER, Micayla	83	166	.500
BRADLEY, Terriell	146	342	.427
HENDERSON, Adrianna	34	81	.420
TERRELL, Deja	36	86	.419
POLAND, Jada	21	54	.389
MIMS, Trena	57	148	.385
SMITH, Brittany	41	118	.347
GOODHART, Grace	46	136	.338
HOLMES, Lauren	75	225	.333
SHILLOW, Orianna	0	17	.000

3-Point Percentage	3FG	Att	Pct
BRADLEY, Terriell	47	104	.452
SMITH, Brittany	11	31	.355
POLAND, Jada	2	6	.333
HENDERSON, Adrianna	9	28	.321
GOODHART, Grace	25	85	.294
HOLMES, Lauren	34	125	.272
MIMS, Trena	3	13	.231
TERRELL, Deja	1	12	.083
SHILLOW, Orianna	0	17	.000
BUCKNER, Micayla	0	6	.000

Free Throw Percent	FG	Att	Pct
SHILLOW, Orianna	2	2	1.000
HOLMES, Lauren	21	25	.840
BRADLEY, Terriell	122	151	.808
HENDERSON, Adrianna	21	31	.677
GOODHART, Grace	14	22	.636
SMITH, Brittany	31	51	.608
MIMS, Trena	20	34	.588
TERRELL, Deja	21	41	.512
POLAND, Jada	16	32	.500
BUCKNER, Micayla	15	42	.357

Scoring Average	G	Pts	Avg/G
BRADLEY, Terriell	24	461	19.2
HOLMES, Lauren	22	205	9.3
BUCKNER, Micayla	24	181	7.5
MIMS, Trena	24	137	5.7
SMITH, Brittany	22	124	5.6
GOODHART, Grace	24	131	5.5
HENDERSON, Adrianna	23	98	4.3
TERRELL, Deja	24	94	3.9
POLAND, Jada	24	60	2.5
SHILLOW, Orianna	10	2	0.2

Field Goal Attempts	G	Att	Att/G
BRADLEY, Terriell	24	342	14.3
HOLMES, Lauren	22	225	10.2
BUCKNER, Micayla	24	166	6.9
MIMS, Trena	24	148	6.2
GOODHART, Grace	24	136	5.7

Field Goals Made	G	Made	Made/G
BRADLEY, Terriell	24	146	6.1
BUCKNER, Micayla	24	83	3.5
HOLMES, Lauren	22	75	3.4
MIMS, Trena	24	57	2.4
GOODHART, Grace	24	46	1.9

3-Point FG Attempts	G	Att	Att/G
HOLMES, Lauren	22	125	5.7
BRADLEY, Terriell	24	104	4.3
GOODHART, Grace	24	85	3.5
SMITH, Brittany	22	31	1.4
HENDERSON, Adrianna	23	28	1.2

3-Point FG Made	G	Made	Made/G
BRADLEY, Terriell	24	47	2.0
HOLMES, Lauren	22	34	1.5
GOODHART, Grace	24	25	1.0
SMITH, Brittany	22	11	0.5
HENDERSON, Adrianna	23	9	0.4

Free Throw Attempt	G	Att	Att/G
BRADLEY, Terriell	24	151	6.3
SMITH, Brittany	22	51	2.3
BUCKNER, Micayla	24	42	1.8
TERRELL, Deja	24	41	1.7
MIMS, Trena	24	34	1.4

Free Throws Made	G	Made	Made/G
BRADLEY, Terriell	24	122	5.1
SMITH, Brittany	22	31	1.4
TERRELL, Deja	24	21	0.9
HOLMES, Lauren	22	21	1.0
HENDERSON, Adrianna	23	21	0.9

2017-18 GAME-BY-GAME LEADERS

Opponent	Date	Score	Points	Rebounds	Assists	Steals	Blocked shots
MACU	11/10/17	86-52	20-HOLMES, Lauren	12-HOLMES, Lauren	6-BRADLEY, Terriel	3-HOLMES, Lauren	2-POLAND, Jada
TEXAS A&M INTERNATI	11/14/17	64-38	20-BUCKNER, Mica	9-BUCKNER, Mica	3-GOODHART, Gra	4-HOLMES, Lauren GOODHART, Gra	3-BUCKNER, Mica
K-STATE	11/19/17	54-55	15-BRADLEY, Terrie	10-BUCKNER, Mica	4-MIMS, Trena	3-BRADLEY, Terriel	4-BUCKNER, Mica
vs COASTAL CAROLINA	11/23/17	50-34	20-BRADLEY, Terrie	6-MIMS, Trena HOLMES, Lauren BUCKNER, Mica	4-SMITH, Brittany	5-GOODHART, Gra	2-TERRELL, Deja
vs DETROIT	11/24/17	63-57	22-BRADLEY, Terrie	8-BRADLEY, Terriel	6-SMITH, Brittany	3-HOLMES, Lauren BRADLEY, Terriell	1-SMITH, Brittany TERRELL, Deja
SMU	11/29/17	47-40	11-BRADLEY, Terrie	11-BUCKNER, Mica	4-MIMS, Trena	2-MIMS, Trena	1-HOLMES, Lauren GOODHART, Gra
TULSA	12/2/17	66-43	23-BRADLEY, Terrie	7-HOLMES, Lauren	3-SMITH, Brittany BRADLEY, Terriell	2-HOLMES, Lauren	2-HOLMES, Lauren
at Indiana	12-5-17	63-68	22-BRADLEY, Terrie	10-BRADLEY, Terrie	4-MIMS, Trena	3-HOLMES, Lauren	1-TERRELL, Deja BUCKNER, Mica
LA SALLE	12/09/17	70-44	17-HOLMES, Lauren	7-BRADLEY, Terriel	3-MIMS, Trena SMITH, Brittany	5-HOLMES, Lauren	1-SMITH, Brittany
at UIC	12/18/17	67-70	27-BRADLEY, Terrie	9-BRADLEY, Terriel	6-SMITH, Brittany BRADLEY, Terriell	3-BUCKNER, Mica GOODHART, Gra	4-BUCKNER, Mica
at Eastern Illinois	12/20/17	63-61	21-BRADLEY, Terrie	10-SMITH, Brittany	4-BRADLEY, Terriel	5-BRADLEY, Terriel	1-GOODHART, Gra POLAND, Jada
OKLAHOMA PANHANDLE	12/30/17	63-41	19-HOLMES, Lauren	13-HOLMES, Lauren	4-SMITH, Brittany	5-HOLMES, Lauren	4-BUCKNER, Mica
at Louisiana Tech	01/03/18	53-61	23-BRADLEY, Terrie	12-BUCKNER, Mica	7-SMITH, Brittany	3-HOLMES, Lauren	3-BUCKNER, Mica
RICE	1/5/18	49-50	14-TERRELL, Deja	7-BRADLEY, Terriel	3-SMITH, Brittany	6-HOLMES, Lauren	2-TERRELL, Deja BUCKNER, Mica
OLD DOMINION	1/11/18	63-46	23-BRADLEY, Terrie	5-POLAND, Jada	5-SMITH, Brittany	2-GOODHART, Gra HENDERSON, Ad	1-HOLMES, Lauren TERRELL, Deja
CHARLOTTE	1/13/18	73-68	22-BRADLEY, Terrie	7-BRADLEY, Terriel	7-SMITH, Brittany	3-SMITH, Brittany BRADLEY, Terriell	3-BRADLEY, Terriel
at Middle Tennessee	01/18/18	48-56	10-BRADLEY, Terrie	7-BRADLEY, Terriel	2-SMITH, Brittany HENDERSON, Ad	3-HOLMES, Lauren	2-TERRELL, Deja
at UAB	01/20/18	52-68	21-BRADLEY, Terrie	7-BRADLEY, Terriel	3-MIMS, Trena	4-BRADLEY, Terriel	1-BRADLEY, Terriel HOLMES, Lauren SMITH, Brittany
WESTERN KENTUCKY	1/26/18	65-79	29-BRADLEY, Terrie	10-POLAND, Jada	6-MIMS, Trena	2-SMITH, Brittany	2-BRADLEY, Terriel
UTEP	1/28/18	48-50	22-BRADLEY, Terrie	6-POLAND, Jada	7-MIMS, Trena	2-BUCKNER, Mica	1-BUCKNER, Mica POLAND, Jada HOLMES, Lauren
at UTSA	2/2/18	58-70	19-BRADLEY, Terrie	9-BRADLEY, Terriel	2-SMITH, Brittany BRADLEY, Terriell	3-TERRELL, Deja	3-TERRELL, Deja
at FIU	02/08/18	92-46	32-BRADLEY, Terrie	7-BRADLEY, Terriel	10-SMITH, Brittany	3-HENDERSON, Ad	2-BUCKNER, Mica
at Florida Atlantic	02/10/18	65-51	20-BRADLEY, Terrie	9-TERRELL, Deja HOLMES, Lauren	2-SMITH, Brittany BRADLEY, Terriell	3-HOLMES, Lauren	2-TERRELL, Deja
SOUTHERN MISS	2/15/18	71-62	26-BRADLEY, Terrie	6-MIMS, Trena	4-BRADLEY, Terriel	2-GOODHART, Gra SMITH, Brittany	1-POLAND, Jada BUCKNER, Mica BRADLEY, Terriell

2017-18 Player Game Highs

Points	32	BRADLEY, Terriell at FIU (02/08/18)
	29	BRADLEY, Terriell vs Western Kentucky (1/26/18)
	27	BRADLEY, Terriell at UIC (12/18/17)
	26	BRADLEY, Terriell vs Southern Miss (2/15/18)
	23	BRADLEY, Terriell vs Old Dominion (1/11/18)
	23	BRADLEY, Terriell at Louisiana Tech (01/03/18)
	23	BRADLEY, Terriell vs Tulsa (12/2/17)
Field Goals Made	11	BRADLEY, Terriell at FIU (02/08/18)
	9	BRADLEY, Terriell vs Southern Miss (2/15/18)
	9	BRADLEY, Terriell at Indiana (12-5-17)
	9	BUCKNER, Micayla vs Texas A&M International (11/14/17)
Field Goal Att.	24	BRADLEY, Terriell at Indiana (12-5-17)
	20	BRADLEY, Terriell at Louisiana Tech (01/03/18)
FG Pct (min 5 made)	.857 (6-7)	TERRELL, Deja vs Rice (1/5/18)
	.818 (9-11)	BUCKNER, Micayla vs Texas A&M International (11/14/17)
3-Point FG Made	9	BRADLEY, Terriell at FIU (02/08/18)
	4	BRADLEY, Terriell vs Southern Miss (2/15/18)
	4	HOLMES, Lauren at Florida Atlantic (02/10/18)
	4	BRADLEY, Terriell vs Western Kentucky (1/26/18)
	4	GOODHART, Grace vs Charlotte (1/13/18)
	4	BRADLEY, Terriell vs Old Dominion (1/11/18)
	4	BRADLEY, Terriell at UIC (12/18/17)
	4	HOLMES, Lauren vs MACU (11/10/17)
3-Point FG Att.	12	HOLMES, Lauren vs Tulsa (12/2/17)
	10	BRADLEY, Terriell at FIU (02/08/18)
	10	HOLMES, Lauren vs Rice (1/5/18)
	10	HOLMES, Lauren vs MACU (11/10/17)
3-Pt FG Pct (min 2 made)	1.000 (2-2)	BRADLEY, Terriell vs COASTAL CAROLINA (11/23/17)
	1.000 (2-2)	BRADLEY, Terriell vs K-State (11/19/17)
	1.000 (2-2)	SMITH, Brittany vs MACU (11/10/17)
Free Throws Made	13	BRADLEY, Terriell vs Western Kentucky (1/26/18)
	10	BRADLEY, Terriell vs DETROIT (11/24/17)
Free Throw Att.	15	BRADLEY, Terriell vs Western Kentucky (1/26/18)
	11	BRADLEY, Terriell vs DETROIT (11/24/17)
FT Pct (min 3 made)	1.000 (5-5)	GOODHART, Grace at Eastern Illinois (12/20/17)
	1.000 (5-5)	BRADLEY, Terriell vs SMU (11/29/17)
	1.000 (4-4)	HOLMES, Lauren at UIC (12/18/17)
	1.000 (4-4)	SMITH, Brittany vs La Salle (12/09/17)
	1.000 (4-4)	HENDERSON, Adrianna vs La Salle (12/09/17)
	1.000 (4-4)	BRADLEY, Terriell at Indiana (12-5-17)
	1.000 (4-4)	HOLMES, Lauren vs MACU (11/10/17)
	1.000 (3-3)	TERRELL, Deja at Florida Atlantic (02/10/18)
Rebounds	13	HOLMES, Lauren vs Oklahoma Panhandle St. Univ. (12/30/17)
	12	BUCKNER, Micayla at Louisiana Tech (01/03/18)
	12	HOLMES, Lauren vs MACU (11/10/17)
Assists	10	SMITH, Brittany at FIU (02/08/18)
	7	MIMS, Trena vs UTEP (1/28/18)
	7	SMITH, Brittany vs Charlotte (1/13/18)
	7	SMITH, Brittany at Louisiana Tech (01/03/18)
Steals	6	HOLMES, Lauren vs Rice (1/5/18)
	5	HOLMES, Lauren vs Oklahoma Panhandle St. Univ. (12/30/17)
	5	BRADLEY, Terriell at Eastern Illinois (12/20/17)
	5	HOLMES, Lauren vs La Salle (12/09/17)

2017-18 Team Highs

POINTS	92	at FIU (02/08/18)
	86	MACU (11/10/17)
	73	CHARLOTTE (1/13/18)
	71	SOUTHERN MISS (2/15/18)
	70	LA SALLE (12/09/17)
FIELD GOALS MADE	38	at FIU (02/08/18)
	34	MACU (11/10/17)
FIELD GOAL ATTEMPTS	72	MACU (11/10/17)
	70	at FIU (02/08/18)
FIELD GOAL PERCENTAG	.543 (38-70)	at FIU (02/08/18)
	.529 (27-51)	CHARLOTTE (1/13/18)
3 PT FIELD GOALS MADE	13	at FIU (02/08/18)
	10	CHARLOTTE (1/13/18)
	10	OLD DOMINION (1/11/18)
3 PT FG ATTEMPTS	29	MACU (11/10/17)
	28	OLD DOMINION (1/11/18)
3 PT FG PERCENTAGE	.565 (13-23)	at FIU (02/08/18)
	.556 (10-18)	CHARLOTTE (1/13/18)
FREE THROWS MADE	22	at Eastern Illinois (12/20/17)
	19	vs DETROIT (11/24/17)
FREE THROW ATTEMPTS	30	at Eastern Illinois (12/20/17)
	26	at UTSA (2/2/18)
FREE THROW PERCENTA	.842 (16-19)	WESTERN KENTUCKY (1/26/18)
	.792 (19-24)	vs DETROIT (11/24/17)
REBOUNDS	48	MACU (11/10/17)
	43	at FIU (02/08/18)
	42	TULSA (12/2/17)
ASSISTS	27	at FIU (02/08/18)
	20	CHARLOTTE (1/13/18)
	20	at UIC (12/18/17)
STEALS	17	TEXAS A&M INTERNATIONAL (11/14/17)
	15	OKLAHOMA PANHANDLE ST. UNIV. (12/30/17)
	15	LA SALLE (12/09/17)
BLOCKED SHOTS	7	OKLAHOMA PANHANDLE ST. UNIV. (12/30/17)
	6	at Louisiana Tech (01/03/18)
	6	at UIC (12/18/17)
	6	K-STATE (11/19/17)
TURNOVERS	22	at Eastern Illinois (12/20/17)
	21	WESTERN KENTUCKY (1/26/18)
FOULS	28	at UTSA (2/2/18)
	27	vs DETROIT (11/24/17)

2017-18 Starters

GAME	1	2	3	4	5	RESULT
vs. TWU (exhibition)	Smith	Goodhart	Holmes	Bradley	Buckner	W, 69-66
vs. MACU	Smith	Goodhart	Holmes	Bradley	Buckner	W, 86-52
vs. Texas A&M Int'l	Mims	Goodhart	Holmes	Bradley	Buckner	W, 64-38
vs. K-State	Mims	Goodhart	Holmes	Bradley	Buckner	L, 55-54
vs. Coastal Carolina	Mims	Goodhart	Holmes	Bradley	Buckner	W, 50-34
vs. Detroit Mercy	Mims	Goodhart	Holmes	Bradley	Buckner	W, 63-57
vs. SMU	Smith	Mims	Holmes	Bradley	Buckner	W, 47-40
vs. Tulsa	Smith	Mims	Holmes	Bradley	Buckner	W, 66-43
at Indiana	Smith	Mims	Holmes	Bradley	Buckner	L, 68-63
vs. La Salle	Smith	Mims	Holmes	Bradley	Buckner	W, 70-44
at UIC	Smith	Mims	Holmes	Bradley	Buckner	L, 70-67
at Eastern Illinois	Smith	Mims	Goodhart	Bradley	Buckner	W, 63-61 (ot)
vs. Okla. Panhandle St. Univ.	Smith	Mims	Holmes	Bradley	Buckner	W, 63-41
at LA Tech	Smith	Mims	Holmes	Bradley	Buckner	L, 61-53
vs. Rice	Smith	Goodhart	Holmes	Bradley	Buckner	L, 50-49
vs. Old Dominion	Smith	Goodhart	Holmes	Bradley	Buckner	W, 64-46
vs. Charlotte	Smith	Goodhart	Holmes	Bradley	Buckner	W, 73-68
at Middle Tennessee	Smith	Goodhart	Holmes	Bradley	Buckner	L, 56-48
at UAB	Smith	Goodhart	Holmes	Bradley	Buckner	L, 68-52
vs. WKU	Smith	Mims	Bradley	Poland	Buckner	L, 79-65
vs. UTEP	Smith	Mims	Bradley	Poland	Buckner	L, 50-48
at UTSA	Smith	Mims	Bradley	Poland	Buckner	L, 70-58
at FIU	Smith	Mims	Goodhart	Bradley	Buckner	W, 92-46
at FAU	Smith	Mims	Goodhart	Bradley	Buckner	W, 65-51
vs. Southern Miss	Smith	Mims	Goodhart	Bradley	Buckner	W, 71-62

STARTING 5 STATS

1	2	3	4	5	NUMBER STARTS	UNT PPG	OPP. PPG	W/L RECORD
Smith	Mims	Holmes	Bradley	Buckner	7	61.3	52.4	4-3
Smith	Goodhart	Holmes	Bradley	Buckner	6	61.8	56.7	3-3
Smith	Mims	Goodhart	Bradley	Buckner	4	72.8	55.0	4-0
Mims	Goodhart	Holmes	Bradley	Buckner	4	57.8	46.0	3-1
Smith	Mims	Bradley	Poland	Buckner	3	56.8	67.2	0-3

2017-18 BOX SCORES

1 North Texas 86 - Mid-America Christian 52 Denton, TX • 11/10/17

MACU 52 • 3-1

#	Player	Total			Rebounds			PF	TP	A	TO	Blk	Stl	Min
		FG-FGA	3-Ptr	FT-FTA	Off	Def	Tot							
32	Alexis Shannon	5-9	1-3	2-3	0	5	5	0	13	0	2	0	1	30
33	Rebekah Wilson	0-0	0-0	0-0	0	3	3	2	0	0	1	0	0	12
03	Jennah Coffman	2-13	0-4	0-0	1	3	4	2	4	1	3	0	0	19
20	Nevada Denton	1-6	1-5	0-0	0	1	1	0	3	1	1	1	1	19
22	Mykala Flores	3-9	2-4	5-7	2	5	7	5	13	1	7	0	2	36
04	ShelbyThraikill	0-0	0-0	0-0	0	1	1	0	1	1	1	0	0	11
10	Chelseah Savage	3-10	3-9	1-2	0	2	2	2	10	2	3	0	0	18
11	JaidanAlley	1-2	1-2	0-0	0	0	0	0	3	0	0	0	0	8
23	Janaya Hines	0-0	0-0	0-0	0	0	0	1	0	0	1	0	0	8
25	Brittany Thompson	0-1	0-0	2-2	0	0	0	2	2	0	1	0	0	9
30	Jessica Fairley	0-1	0-1	0-0	0	2	2	0	0	1	1	0	0	11
44	Ossyana Ozoani	1-2	0-0	2-2	1	2	3	1	4	0	0	2	0	19
Team					4 15									
Totals		16-53	8-28	12-18	8	25	33	16	52	7	21	3	4	200

1st - FG % 3-13 23.1% 2nd: 3-13 23.1% 3rd: 5-15 33.3% 4th: 5-12 41.7% Game: 16-5 30.2% Deadball
3FG %: 2-8 25.0% 1-6 16.7% 3-9 33.3% 2-5 40.0% 8-28 28.6% 1-3 33.3%
FT %: 2-2 100.0 7-11 63.6% 2-4 50.0% 1-1 100.0 12-1 66.7% Rebound 4

North Texas 86 • 1-0

#	Player	Total			Rebounds			PF	TP	A	TO	Blk	Stl	Min
		FG-FGA	3-Ptr	FT-FTA	Off	Def	Tot							
34	BUCKNER, Micayla	6-8	0-0	0-2	3	4	7	4	12	0	1	0	0	19
02	GOODHART, Grace	4-9	1-4	0-1	0	5	5	2	9	4	1	0	0	29
03	SMITH, Brittany	2-5	2-2	2-2	0	1	1	2	8	1	1	0	2	23
23	BRADLEY, Terriell	8-13	1-4	1-2	2	4	6	3	18	6	4	0	1	29
33	HOLMES, Lauren	6-15	4-10	4-4	5	7	12	2	20	1	1	0	3	33
10	HENDERSON, Adrianna	0-1	0-0	0-0	0	1	1	0	0	1	1	1	0	9
12	POLAND, Jada	4-6	0-1	0-0	1	3	4	1	8	0	2	1	1	17
13	SHILLOW, Orianna	0-7	0-7	0-0	0	0	0	1	0	1	0	0	0	13
21	TERRELL, Deja	0-2	0-1	3-4	2	1	3	1	3	0	1	1	0	11
24	MIMS, Trena	4-6	0-0	0-0	2	3	5	4	8	2	2	0	0	17
Team					2 4									
Totals		34-72	8-29	10-15	17	31	48	21	86	15	14	5	8	200

1st - FG % 11-1 57.9% 2nd: 8-20 40.0% 3rd: 8-16 50.0% 4th: 7-17 41.2% Game: 34-7 47.2% Deadball
3FG %: 4-8 50.0% 2-6 33.3% 0-5 0.0% 2-10 20.0% 8-29 27.6% 10-1 66.7%
FT %: 2-3 66.7% 3-4 75.0% 2-3 66.7% Rebound 1

Officials: Shandra Twine, Marleah Vidal, Blanca Burns
Technical fouls: MACU-None. North Texas-None.
Attendance: 1007
2017-18 Season Opener

2 North Texas 64 - Texas A&M Int'l 52 Denton, TX • 11/14/17

Texas A&M International 38 • 0-3

#	Player	Total			Rebounds			PF	TP	A	TO	Blk	Stl	Min
		FG-FGA	3-Ptr	FT-FTA	Off	Def	Tot							
11	Julia Hanni	0-3	0-0	2-4	2	1	3	4	2	2	3	0	0	25
22	Veshae A. Wilkinson	3-8	1-2	1-2	1	2	3	2	8	1	2	0	3	25
01	Tantashea Giger	3-10	2-5	0-0	2	4	6	3	8	3	7	1	0	34
05	Passionate Amukamara	2-8	2-7	2-2	2	2	4	4	8	1	6	0	0	28
21	Ashley Perez	0-3	0-2	0-0	0	5	5	0	0	1	0	0	0	26
02	Dannia Gonzalez	2-3	0-0	2-2	1	5	6	3	6	0	1	0	0	13
04	Renee Contreras	0-2	0-0	0-0	0	2	2	0	0	0	1	0	1	12
12	LaShae Rolle	0-5	0-0	0-0	1	1	2	1	0	0	4	0	0	13
30	Jaden Gonzales	1-3	1-3	3-4	0	1	1	2	6	0	2	0	2	19
32	Vanessa Oyola	0-1	0-1	0-0	0	0	0	0	0	1	0	0	0	5
Team					4 4									
Totals		11-46	6-20	10-14	13	23	36	19	38	9	27	1	7	200

1st - FG % 6-14 42.9% 2nd: 2-11 18.2% 3rd: 1-10 10.0% 4th: 2-11 18.2% Game: 11-4 23.9% Deadball
3FG %: 3-4 75.0% 2-6 33.3% 0-6 0.0% 1-4 25.0% 6-20 30.0% Rebound 2
FT %: 0-0 0.0% 4-6 66.7% 3-4 75.0% 3-4 75.0% 10-1 71.4%

North Texas 64 • 2-0

#	Player	Total			Rebounds			PF	TP	A	TO	Blk	Stl	Min
		FG-FGA	3-Ptr	FT-FTA	Off	Def	Tot							
04	BUCKNER, Micayla	9-11	0-0	2-5	2	7	9	1	20	0	2	3	2	30
02	GOODHART, Grace	3-9	1-7	2-2	0	2	2	2	9	3	5	0	4	30
23	BRADLEY, Terriell	4-14	0-1	0-0	3	0	3	4	8	2	0	0	1	33
24	MIMS, Trena	4-10	0-1	0-1	0	3	3	3	8	2	2	0	2	19
33	HOLMES, Lauren	4-8	0-3	0-0	3	2	5	2	8	1	2	0	4	29
10	HENDERSON, Adrianna	1-3	0-1	1-2	1	2	3	1	3	0	1	0	0	13
12	POLAND, Jada	0-2	0-0	1-2	2	6	8	3	1	2	0	1	3	26
13	SHILLOW, Orianna	0-0	0-0	0-0	0	0	0	1	0	0	0	0	1	6
21	TERRELL, Deja	2-5	0-0	3-5	5	2	7	2	7	1	2	0	0	14
Team					0 0									
Totals		27-62	1-13	9-17	16	24	40	19	64	11	14	4	17	200

1st - FG % 8-17 47.1% 2nd: 2-15 13.3% 3rd: 7-14 50.0% 4th: 10-1 62.5% Game: 27-6 43.5% Deadball
3FG %: 0-2 0.0% 1-6 16.7% 0-3 0.0% 0-2 0.0% 1-13 7.7% Rebound 4
FT %: 1-3 33.3% 5-8 62.5% 1-3 33.3% 2-3 66.7% 9-17 52.9%

Officials: BILL LARANCE, METTA ROBERTS, ROCHELLE BENNETT
Technical fouls: Texas A&M International-None. North Texas-None.
Attendance: 807
FIRST TIME TAMI AND UNT HAVE PLAYED IN WBB

3 Kansas State 55- North Texas 54 Denton, TX • 11/19/17

K-State 55 • 4-0

#	Player	Total			Rebounds			PF	TP	A	TO	Blk	Stl	Min
		FG-FGA	3-Ptr	FT-FTA	Off	Def	Tot							
01	Page, Kaylee	3-8	1-4	4-5	1	2	3	0	11	1	0	1	0	32
11	Williams, Peyton	2-8	1-2	4-5	1	6	7	2	9	0	3	2	0	31
10	Goth, Kayla	4-8	0-1	3-6	0	4	4	3	11	5	2	0	2	36
12	Ranke, Rachel	5-14	4-10	0-0	1	3	4	1	14	0	1	0	3	34
50	Martin, Shaelyn	1-5	0-0	0-0	1	2	3	2	2	3	3	1	2	33
02	Goodrich, Cymone	1-4	0-0	0-0	0	2	2	1	2	1	1	0	1	20
33	Ray, Ashley	2-3	0-0	0-0	0	1	1	1	4	0	1	1	0	8
40	Lakes, Mary	0-0	0-0	2-4	2	1	3	1	2	0	1	1	0	6
Team					1 5 6									
Totals		18-50	6-17	13-20	7	26	33	11	55	10	12	6	8	200

1st - FG % 4-12 33.3% 2nd: 6-13 46.2% 3rd: 2-15 13.3% 4th: 6-10 60.0% Game: 18-5 36.0% Deadball
3FG %: 2-3 66.7% 1-4 25.0% 0-4 0.0% 3-6 50.0% 6-17 35.3%
FT %: 1-2 50.0% 4-4 100.0 4-8 50.0% 4-8 50.0% 13-2 65.0% Rebound 3

North Texas 54 • 2-1

#	Player	Total			Rebounds			PF	TP	A	TO	Blk	Stl	Min
		FG-FGA	3-Ptr	FT-FTA	Off	Def	Tot							
34	BUCKNER, Micayla	3-10	0-1	0-0	3	7	10	1	6	1	2	4	0	34
02	GOODHART, Grace	1-2	1-2	0-0	0	0	0	4	3	0	1	0	0	16
23	BRADLEY, Terriell	6-12	2-2	1-2	1	2	3	2	15	2	2	0	3	39
24	MIMS, Trena	5-11	1-1	0-0	1	1	2	4	11	4	2	0	0	30
33	HOLMES, Lauren	3-9	2-7	0-0	1	6	7	4	8	0	1	1	2	25
10	HENDERSON, Adrianna	2-5	1-2	0-0	0	1	1	5	5	1	3	0	1	20
12	POLAND, Jada	1-2	0-0	0-0	0	8	8	3	2	0	1	0	0	22
21	TERRELL, Deja	2-4	0-2	0-0	0	2	2	1	4	0	2	1	1	14
Team					1 2 3									
Totals		23-55	7-17	1-2	7	29	36	24	54	8	15	6	7	200

1st - FG % 6-14 42.9% 2nd: 7-17 41.2% 3rd: 4-9 44.4% 4th: 6-15 40.0% Game: 23-5 41.8% Deadball
3FG %: 1-4 25.0% 2-4 50.0% 1-3 33.3% 0-0 0.0% 1-2 50.0% 1-9 11.1% Rebound 0
FT %: 1-2 50.0% 0-0 0.0% 0-0 0.0% 0-0 0.0% 1-2 50.0%

Officials: Scott Yarbrough, Travis Jones, Michelle Kramer
Technical fouls: K-State-None. North Texas-None.
Attendance: 1172

Score by periods	1st	2nd	3rd	4th	Total
K-State	11	17	8	19	55
North Texas	14	16	9	15	54

Points	In	Off	2nd	Fast	Bench
K-STATE	18	11	4	9	8
NT	24	4	2	0	11

Last FG - K-STATE 4th-01:03, NT 4th-00:28.
Largest lead - K-STATE by 6 1st-07:34, NT by 11 2nd-05:45.
K-STATE led for 05:35, NT led for 29:13. Game was tied for 05:12.

2017-18 BOX SCORES

5

North Texas 63 - Detroit Mercy 57
Daytona Beach, FL • 11/24/17

DETROIT 57 • 0-5

Box score table for Detroit Mercy vs North Texas, showing player stats like FG-FGA, 3-Ptr, Rebounds, PF, TP, A TO Blk Stl Min.

Summary statistics for Detroit Mercy: 1st - FG % 3-11 27.3%, 2nd: 7-14 50.0%, 3rd: 3-12 25.0%, 4th: 3-8 37.5%, Game: 16-4 35.6%, Deadball Rebound 5.

North Texas 63 • 4-1

Box score table for North Texas vs Detroit Mercy, showing player stats like FG-FGA, 3-Ptr, Rebounds, PF, TP, A TO Blk Stl Min.

Summary statistics for North Texas: 1st - FG % 4-17 23.5%, 2nd: 8-19 42.1%, 3rd: 3-13 23.1%, 4th: 5-14 35.7%, Game: 20-6 31.7%, Deadball Rebound 2.

Officials: MARK BERGER/ BRYAN NICHOLS/ CALVIN GARTH
Technical fouls: DETROIT-None. North Texas-None.

6

North Texas 47 - SMU 40
Denton, TX • 11/29/17

SMU 40 • 3-5

Box score table for SMU vs North Texas, showing player stats like FG-FGA, 3-Ptr, Rebounds, PF, TP, A TO Blk Stl Min.

Summary statistics for SMU: 1st - FG % 2-9 22.2%, 2nd: 5-16 31.3%, 3rd: 1-8 12.5%, 4th: 5-12 41.7%, Game: 13-4 28.9%, Deadball Rebound 4.

North Texas 47 • 5-1

Box score table for North Texas vs SMU, showing player stats like FG-FGA, 3-Ptr, Rebounds, PF, TP, A TO Blk Stl Min.

Summary statistics for North Texas: 1st - FG % 4-16 25.0%, 2nd: 5-14 35.7%, 3rd: 3-16 18.8%, 4th: 6-10 60.0%, Game: 18-5 32.1%, Deadball Rebound 2.

Officials: Scott Yarbrough, Brian Hall, Metta Roberts
Technical fouls: SMU-None. North Texas-None.
Attendance: 3243

7

North Texas 66 - Tulsa 43
Denton, TX • 12/2/17

Tulsa 43 • 3-5

Box score table for Tulsa vs North Texas, showing player stats like FG-FGA, 3-Ptr, Rebounds, PF, TP, A TO Blk Stl Min.

Summary statistics for Tulsa: 1st - FG % 3-9 33.3%, 2nd: 3-10 30.0%, 3rd: 4-14 28.6%, 4th: 1-11 9.1%, Game: 11-4 25.0%, Deadball Rebound 2.

North Texas 66 • 6-1

Box score table for North Texas vs Tulsa, showing player stats like FG-FGA, 3-Ptr, Rebounds, PF, TP, A TO Blk Stl Min.

Summary statistics for North Texas: 1st - FG % 5-12 41.7%, 2nd: 5-13 38.5%, 3rd: 4-16 25.0%, 4th: 8-14 57.1%, Game: 22-5 40.0%, Deadball Rebound 4.

Officials: Brian Garland, Bill Larence, Chaney Muench
Technical fouls: Tulsa-None. North Texas-None.
Attendance: 1181
LAST TIME THESE SCHOOLS MET WAS DEC. 3, 2017

8

Indiana 68 - North Texas 63
Bloomington, Ind. • 12/5/17

North Texas 63 • 6-2

Box score table for Indiana vs North Texas, showing player stats like FG-FGA, 3-Ptr, Rebounds, PF, TP, A TO Blk Stl Min.

Indiana 68 • 5-4

Box score table for North Texas vs Indiana, showing player stats like FG-FGA, 3-Ptr, Rebounds, PF, TP, A TO Blk Stl Min.

Summary statistics for Indiana: 1st - FG % 7-13 53.8%, 2nd: 4-15 26.7%, 3rd: 8-13 61.5%, 4th: 5-14 35.7%, Game: 24-5 43.6%, Deadball Rebound 3.

Officials: Beverly Roberts, Roy Gulbeyan, Missy Brooks
Technical fouls: North Texas-None. Indiana-None.
Attendance: 2303

Score by periods table showing 1st, 2nd, 3rd, 4th, and Total scores for North Texas and Indiana.

Last FG - NT 4th-03:52, IND 4th-00:20.
Largest lead - NT by 3 4th-06:31, IND by 15 3rd-08:09.
NT led for 03:55. IND led for 34:45. Game was tied for 01:20.

Score tied - 3 times.
Lead changed - 7 times.

2017-18 BOX SCORES

9

North Texas 70 - La Salle 44
Denton, TX • 12/9/17

La Salle 44 • 4-6

#	Player	Total			3-Ptr			Rebounds			PF	TP	A TO	Blk	Stl	Min
		FG	FGA	FT-FTA	FG	FGA	FT-FTA	Off	Def	Tot						
25	MILLER, Shalina	f	4-9	0-0	0-0	2	5	7	2	8	1	5	3	1	28	
44	FREELAND, Ashanti	f	3-3	0-0	1-2	2	3	5	2	7	0	3	1	0	35	
01	EDWARDS, Shaquana	g	1-4	0-0	0-0	0	2	2	0	2	1	2	0	22		
15	MILLER, Adreana	g	0-3	0-1	0-0	0	0	0	3	0	0	3	0	8		
21	KING, Amy	g	5-18	0-4	2-2	0	8	8	3	12	3	7	2	40		
11	KING, Deja		3-6	0-0	1-1	0	2	2	3	7	2	3	1	31		
14	NICHOLLS, Michelle		0-1	0-0	0-0	0	0	0	1	0	1	2	1	19		
22	REESE, Jeryn		1-1	0-0	0-0	1	1	2	0	2	0	1	0	5		
35	NGWAFANG, Sofilia		2-2	0-0	2-4	3	3	6	3	6	0	1	1	12		
Team						1 3 4										
Totals			19-47	0-5	6-9	9	27	36	17	44	8	27	9	5	200	

1st - FG % 5-11 45.5% 2nd: 4-12 33.3% 3rd: 3-10 30.0% 4th: 7-14 50.0% Game: 19-4 40.4% Deadball Rebound 2

3FG %: 0-2 0.0% 4-8 50.0% 0-2 0.0% 0-1 0.0% 0-5 0.0%

FT %: 1-1 100.0 2-2 100.0 3-6 50.0% 0-0 0.0% 6-9 66.7%

North Texas 70 • 7-2

#	Player	Total			3-Ptr			Rebounds			PF	TP	A TO	Blk	Stl	Min
		FG	FGA	FT-FTA	FG	FGA	FT-FTA	Off	Def	Tot						
34	BUCKNER, Micayla	f	5-13	0-1	0-0	3	3	6	2	10	1	2	0	2	24	
03	SMITH, Brittany	g	3-7	1-2	4-4	0	1	1	2	11	3	2	1	2	28	
23	BRADLEY, Terriell	g	3-10	1-2	1-2	2	5	7	1	8	2	2	0	2	30	
24	MIMS, Trena	g	3-6	0-0	1-2	1	2	3	1	7	3	3	0	1	27	
33	HOLMES, Lauren	g	6-14	3-7	2-2	3	2	5	1	17	1	0	0	5	30	
02	GOODHART, Grace	g	2-4	1-2	0-0	0	0	0	1	5	1	0	0	0	18	
10	HENDERSON, Adrianna	g	0-4	0-0	4-4	4	1	5	1	4	0	0	0	2	18	
12	POLAND, Jada	g	0-2	0-0	3-4	0	3	3	1	3	0	0	0	0	7	
13	SHILLOW, Orianna	g	0-1	0-1	0-0	0	0	0	0	0	0	0	0	2	2	
21	TERRELL, Deja	g	2-5	0-1	1-4	2	0	2	3	5	0	2	0	1	16	
Team						2 3 5										
Totals			24-66	6-16	16-22	17	20	37	13	70	11	11	1	15	200	

1st - FG % 8-16 50.0% 2nd: 7-19 36.8% 3rd: 6-16 37.5% 4th: 3-15 20.0% Game: 24-6 36.4% Deadball Rebound 4

3FG %: 2-5 40.0% 1-2 50.0% 2-4 50.0% 1-5 20.0% 6-16 37.5%

FT %: 2-6 33.3% 3-4 75.0% 5-6 83.3% 6-6 100.0% 16-2 72.7%

Officials: Metta Roberts, Travis Jones, Marleah Vidal
Technical fouls: La Salle-None. North Texas-None.
Attendance: 996

10

UIC 70 - North Texas 67
Chicago, IL • 12/18/17

North Texas 67 • 7-3

#	Player	Total			3-Ptr			Rebounds			PF	TP	A TO	Blk	Stl	Min
		FG	FGA	FT-FTA	FG	FGA	FT-FTA	Off	Def	Tot						
34	BUCKNER, Micayla	f	7-11	0-0	0-2	1	7	8	5	14	1	3	4	3	37	
23	BRADLEY, Terriell	g	7-15	4-7	9-10	2	7	9	5	27	6	3	1	1	36	
24	MIMS, Trena	g	1-4	0-1	0-0	1	3	4	5	2	3	3	0	0	18	
3	SMITH, Brittany	g	2-6	0-2	0-2	0	1	1	4	4	6	4	0	1	29	
33	HOLMES, Lauren	g	4-7	1-3	4-4	2	1	3	3	13	2	1	1	1	34	
10	HENDERSON, Adrianna	g	0-0	0-0	0-0	0	0	0	0	0	0	0	0	2		
12	POLAND, Jada	g	0-2	0-1	0-0	2	1	3	2	0	0	0	0	5		
13	SHILLOW, Orianna	g	0-0	0-0	0-0	0	0	0	0	0	0	0	0	0+		
2	GOODHART, Grace	g	3-6	1-4	0-0	0	2	2	1	7	2	3	0	3	33	
21	TERRELL, Deja	g	0-0	0-0	0-0	1	0	1	1	0	0	0	0	6		
Team						2 2 4										
Totals			24-51	6-18	13-18	11	24	35	26	67	20	18	6	9	200	

1st - FG % 8-11 72.7% 2nd: 6-15 40.0% 3rd: 6-10 60.0% 4th: 4-15 26.7% Game: 24-5 47.1% Deadball Rebound 3

3FG %: 2-5 40.0% 4-8 50.0% 0-2 0.0% 0-3 0.0% 6-18 33.3%

FT %: 2-3 66.7% 3-5 60.0% 4-6 66.7% 4-4 100.0% 13-1 72.2%

UIC 70 • 7-3

#	Player	Total			3-Ptr			Rebounds			PF	TP	A TO	Blk	Stl	Min
		FG	FGA	FT-FTA	FG	FGA	FT-FTA	Off	Def	Tot						
30	JOHNSON, Gabryelle	f	6-8	0-0	5-8	6	6	12	5	17	0	1	0	2	38	
44	ZAGORAC, Teodora	c	0-4	0-3	0-0	1	1	2	0	0	0	0	0	0	20	
20	ETHERIDGE, Catera	g	1-4	0-0	0-0	0	2	2	2	2	2	2	0	0	25	
3	BYRD, Brittany	g	8-20	4-11	4-9	2	2	4	1	24	5	3	0	1	40	
5	TONEY, Taylor	g	3-7	1-1	3-4	1	3	4	10	4	2	0	0	25		
10	TEDFORD, Tia	g	2-3	1-2	0-0	0	1	1	1	5	1	2	0	1	15	
14	NNEJI, Jada	g	1-1	0-0	0-0	1	0	1	1	2	0	0	0	1		
22	LAKE, Abreanna	g	0-1	0-0	0-0	0	0	0	1	0	1	2	0	1	9	
35	LAMPLEY, Tylah	g	5-11	0-1	0-1	1	2	3	2	10	5	2	1	1	27	
Team						4 1 5										
Totals			26-59	6-18	12-22	16	18	34	17	70	18	14	1	6	200	

1st - FG % 9-18 50.0% 2nd: 4-12 33.3% 3rd: 6-13 46.2% 4th: 7-16 43.8% Game: 26-5 44.1% Deadball Rebound 3

3FG %: 3-8 37.5% 0-0 0.0% 2-6 33.3% 1-4 25.0% 6-18 33.3%

FT %: 0-0 0.0% 1-4 25.0% 5-6 83.3% 6-12 50.0% 12-2 54.5%

Officials: Bob Enterline, Dorrin Stewart, Erin Frias
Technical fouls: North Texas-BRADLEY, Terriell. UIC-None.
Attendance: 249

11

North Texas 63 - Eastern Illinois 61 (OT)
Charleston, IL • 12/20/17

North Texas 63 • 8-3

#	Player	Total			3-Ptr			Rebounds			PF	TP	A TO	Blk	Stl	Min
		FG	FGA	FT-FTA	FG	FGA	FT-FTA	Off	Def	Tot						
34	BUCKNER, Micayla	f	2-4	0-0	2-4	3	6	9	3	6	0	5	0	3	29	
02	GOODHART, Grace	g	4-11	3-6	5-5	0	3	3	2	16	0	4	1	1	45	
03	SMITH, Brittany	g	2-7	0-2	2-4	4	6	10	5	6	1	5	0	0	35	
23	BRADLEY, Terriell	g	7-18	0-4	7-9	2	6	8	2	21	4	4	0	5	45	
24	MIMS, Trena	g	2-5	0-1	3-4	1	2	3	3	7	0	3	0	2	32	
12	POLAND, Jada	g	1-1	0-0	0-0	0	0	0	2	2	1	0	1	9		
13	SHILLOW, Orianna	g	0-3	0-3	2-2	0	0	0	1	2	0	0	0	21		
21	TERRELL, Deja	g	1-2	0-0	1-2	1	1	2	1	3	1	0	0	9		
Team						1 2 3										
Totals			19-51	3-16	22-30	12	26	38	19	63	7	22	2	11	225	

1st - FG % 5-11 45.5% 2nd: 2-13 15.4% 3rd: 4-11 36.4% 4th: 5-11 45.5% Game: 19-5 37.3% Deadball Rebound 5

3FG %: 1-4 25.0% 1-4 25.0% 1-5 20.0% 0-2 0.0% 3-16 18.8%

FT %: 2-7 28.6% 2-2 100.0% 11-1 100.0% 5-8 62.5% 22-3 73.3%

Eastern Illinois 61 • 1-9

#	Player	Total			3-Ptr			Rebounds			PF	TP	A TO	Blk	Stl	Min
		FG	FGA	FT-FTA	FG	FGA	FT-FTA	Off	Def	Tot						
14	McRAE, Grace	f	3-5	0-0	0-0	2	0	2	2	6	0	2	0	2	29	
32	NEHLS, Jennifer	f	1-8	0-5	2-4	0	2	2	3	4	2	4	0	2	39	
12	TELEZ, Carmen	g	2-11	2-8	0-0	2	3	5	4	6	4	4	0	1	37	
15	STEELE, Taylor	g	7-10	3-5	4-6	0	5	3	21	3	4	0	1	45		
20	BERRY, Danielle	g	2-9	1-6	2-2	2	4	6	4	7	4	3	0	5	43	
11	PACE, Karle	g	0-0	0-0	0-0	2	2	2	0	0	0	3	0	1	5	
21	STULL, Halle	g	6-9	3-6	1-2	2	4	6	1	16	0	2	1	1	25	
31	SMITH, Jalisha	g	0-0	0-0	1-2	0	0	0	2	1	1	0	0	0	2	
Team						1 3 4										
Totals			21-52	9-30	10-16	9	23	32	21	61	14	22	1	13	225	

2017-18 BOX SCORES

13 LA Tech 61 - North Texas 53 Ruston, LA • 1/3/18

North Texas 53 • 9-4 (0-1)

Box score table for North Texas 53 vs LA Tech 61. Includes player stats for Smith, Bradley, Mims, Holmes, Buckner, Goodhart, HENDERSON, Poland, Terrell, and team totals.

1st - FG % 4-14 28.6% 2nd: 3-12 25.0% 3rd: 7-16 43.8% 4th: 5-15 33.3% Game: 19-55 33.3% Deadball Rebound 4

Louisiana Tech 61 • 10-4 (1-0)

Box score table for Louisiana Tech 61 vs North Texas 53. Includes player stats for Lang, Anthony, Stahly, Whitney, Malone, Dixon, McCutcheon, McLeod, and Cleaver, and team totals.

1st - FG % 6-14 42.9% 2nd: 5-12 41.7% 3rd: 7-13 53.8% 4th: 3-14 21.4% Game: 21-55 39.6% Deadball Rebound 3

Officials: Gina Cross, Carla Fountain, Darren McClure Technical fouls: North Texas-None. Louisiana Tech-None. Attendance: 1749

14 Rice 50 - North Texas 49 Denton, TX • 1/5/18

Rice 50 • 11-2 (1-0)

Box score table for Rice 50 vs North Texas 49. Includes player stats for Iademarco, Chrisman, Knight, OGWUMIKE, Stanton, Wiggins, Grigsby, and Ozoude, and team totals.

1st - FG % 6-11 54.5% 2nd: 1-11 9.1% 3rd: 5-10 50.0% 4th: 3-11 27.3% Game: 15-44 34.9% Deadball Rebound 3

North Texas 49 • 9-5 (0-2)

Box score table for North Texas 49 vs Rice 50. Includes player stats for Buckner, Goodhart, Smith, Bradley, Holmes, HENDERSON, Poland, Terrell, and Mims, and team totals.

1st - FG % 3-14 21.4% 2nd: 4-14 28.6% 3rd: 3-13 23.1% 4th: 6-13 46.2% Game: 16-55 29.6% Deadball Rebound 1

Officials: Mark Zentz, Susan Blauch, Ashley Gilpin Technical fouls: Rice-OGWUMIKE, ERICA; IADEMARCO, Nicole. North Texas-TERRELL, Deja; BRADLEY, Terriell. Attendance: 1211

15 North Texas 63 - Old Dominion 46 Denton, TX • 1/11/18

Old Dominion 46 • 2-14 (0-3)

Box score table for Old Dominion 46 vs North Texas 63. Includes player stats for Brew, Oigbokie, Timmons, Morris, Jackson, Loftus, Edwards, Carter, and Hardeen, and team totals.

1st - FG % 3-8 37.5% 2nd: 5-10 50.0% 3rd: 3-9 33.3% 4th: 4-10 40.0% Game: 15-33 45.5% Deadball Rebound 2

North Texas 63 • 10-5 (1-2)

Box score table for North Texas 63 vs Old Dominion 46. Includes player stats for Buckner, Goodhart, Smith, Bradley, Holmes, HENDERSON, Poland, Shilow, Terrell, and Mims, and team totals.

1st - FG % 4-13 30.8% 2nd: 7-14 50.0% 3rd: 4-13 30.8% 4th: 3-9 33.3% Game: 18-44 40.9% Deadball Rebound 5

Officials: Eric Koch, Chaney Muench, Shandra Twine Technical fouls: Old Dominion-OIGBOKIE, Odegua. North Texas-None. Attendance: 1028

Score by periods table for Old Dominion vs North Texas. Shows scores for 1st, 2nd, 3rd, 4th quarters and total score.

Points and fouls table for Old Dominion vs North Texas. Shows points in the paint, off the paint, 2nd chance, fast break, and bench points.

16 North Texas 73 - Charlotte 68 Denton, TX • 1/13/18

Charlotte 68 • 6-11 (2-2)

Box score table for Charlotte 68 vs North Texas 73. Includes player stats for Jamison-Myers, PEARSON, RAVENTOS, Wilson, Ransom, Linney, Harley, and Robinson, and team totals.

1st - FG % 9-21 42.9% 2nd: 5-12 41.7% 3rd: 8-15 53.3% 4th: 5-15 33.3% Game: 27-66 40.9% Deadball Rebound 2

North Texas 73 • 11-5 (2-2)

Box score table for North Texas 73 vs Charlotte 68. Includes player stats for Buckner, Goodhart, Smith, Bradley, Holmes, HENDERSON, Poland, Terrell, and Mims, and team totals.

1st - FG % 8-14 57.1% 2nd: 8-14 57.1% 3rd: 6-10 60.0% 4th: 5-13 38.5% Game: 27-55 49.1% Deadball Rebound 1

Score by periods table for North Texas vs Charlotte. Shows scores for 1st, 2nd, 3rd, 4th quarters and total score.

Points and fouls table for North Texas vs Charlotte. Shows points in the paint, off the paint, 2nd chance, fast break, and bench points.

Last FG - CHA 4th-03:24, NT 4th-00:26. Largest lead - CHA by 11 1st-05:17, NT by 5 3rd-02:05. CHA led for 28:03. NT led for 08:05. Game was tied for 03:52.

2017-18 BOX SCORES

17 Middle Tennessee 56 - North Texas 48 Murfreesboro, TN • 1/18/18

North Texas 48 • 11-6, 2-3

#	Player	Total			3-Ptr			Rebounds			PF	TP	A	TO	Blk	Stl	Min
		FG-FGA	FG-FGA	FT-FTA	FG-FGA	FG-FGA	FT-FTA	Off	Def	Tot							
34	BUCKNER, Micayla	f	4-5	0-0	0-0	3	1	4	5	8	0	2	1	0	13		
02	GOODHART, Grace	g	2-10	2-7	2-4	0	1	1	1	8	1	3	0	0	22		
03	SMITH, Brittany	g	0-0	0-0	2-2	0	3	3	3	2	2	2	0	0	34		
23	BRADLEY, Terriell	g	2-12	1-2	5-6	1	6	7	2	10	1	2	0	0	38		
33	HOLMES, Lauren	g	4-11	0-5	1-2	2	1	3	3	9	0	1	0	3	22		
10	HENDERSON, Adrianna	g	1-2	0-0	0-0	0	1	1	2	2	2	1	0	1	16		
12	POLAND, Jada	g	1-2	1-1	0-0	0	2	2	2	3	0	0	0	1	16		
21	TERRELL, Deja	g	1-2	0-0	0-0	0	2	2	0	2	1	2	2	0	17		
24	MIMS, Trena	g	2-6	0-0	0-0	2	0	2	0	4	0	0	0	0	22		
Team						2	2	4									
Totals			17-50	4-15	10-14	10	19	29	18	48	7	13	3	5	200		

1st - FG % 2-11 18.2% 2nd: 5-11 45.5% 3rd: 4-14 28.6% 4th: 6-14 42.9% Game: 17-5 34.0% Deadball
 3FG %: 2-7 28.6% 1-1 100.0 0-3 0.0% 1-4 25.0% 4-15 26.7% 1-4 25.0% Rebound
 FT %: 0-0 0.0% 7-8 87.5% 1-2 50.0% 2-4 50.0% 10-1 71.4% 3

Middle Tennessee 56 • 11-7, 3-2

#	Player	Total			3-Ptr			Rebounds			PF	TP	A	TO	Blk	Stl	Min
		FG-FGA	FG-FGA	FT-FTA	FG-FGA	FG-FGA	FT-FTA	Off	Def	Tot							
00	JOHNSON, Alex	f	2-7	1-2	3-5	0	3	3	3	8	1	6	0	2	28		
23	LYON, Gabby	f	2-4	0-1	0-0	3	5	8	2	4	2	4	0	2	32		
05	SISSOM, Abbey	g	1-4	1-2	4-4	0	2	2	1	7	2	2	0	0	34		
12	LOUOU, Jess	g	5-10	4-8	0-0	0	6	6	2	14	3	1	0	1	39		
14	COLLIER, Katie	g	1-2	1-2	2-6	0	4	4	1	5	0	2	0	0	22		
13	MAJORS, Jordan	g	0-1	0-0	0-0	0	0	0	0	0	0	0	0	1	3		
15	JONES, Anna	g	6-9	3-5	0-0	3	0	3	4	15	3	2	0	2	25		
24	REUTER, Rebecca	g	1-4	1-3	0-0	2	3	5	0	3	1	0	0	0	17		
Team						0	1	1									
Totals			18-41	11-23	9-15	8	24	32	13	56	12	19	0	8	200		

1st - FG % 3-12 25.0% 2nd: 4-13 30.8% 3rd: 6-11 54.5% 4th: 5-5 100.0% Game: 18-4 43.9% Deadball
 3FG %: 2-8 25.0% 2-7 28.6% 4-5 80.0% 3-3 100.0 11-2 47.8% 9-15 60.0% Rebound
 FT %: 2-2 100.0 0-0 0.0% 1-2 50.0% 6-11 54.5% 11-2 47.8% 9-15 60.0% 2

Officials: Dawn Marsh, Royce Blevins, Marcus Smith
 Technical fouls: North Texas-None. Middle Tennessee-None.
 Attendance: 3230

18 UAB 68- North Texas 52 Birmingham, AL • 1/20/18

North Texas 52 • 11-7, 2-4

#	Player	Total			3-Ptr			Rebounds			PF	TP	A	TO	Blk	Stl	Min
		FG-FGA	FG-FGA	FT-FTA	FG-FGA	FG-FGA	FT-FTA	Off	Def	Tot							
34	BUCKNER, Micayla	f	1-5	0-0	2-6	2	2	4	3	4	1	3	0	2	23		
02	GOODHART, Grace	g	2-4	1-2	0-0	0	0	0	2	5	1	0	0	1	23		
03	SMITH, Brittany	g	4-9	1-3	3-4	0	6	6	3	12	2	3	1	0	30		
23	BRADLEY, Terriell	g	6-15	1-4	8-9	2	5	7	2	21	2	6	1	4	38		
33	HOLMES, Lauren	g	2-7	0-3	0-0	2	3	5	1	4	0	0	1	1	31		
10	HENDERSON, Adrianna	g	0-3	0-2	2-4	0	0	0	2	2	0	1	0	0	12		
12	POLAND, Jada	g	0-0	0-0	0-2	1	1	2	4	0	0	2	0	0	14		
21	TERRELL, Deja	g	1-3	0-1	0-0	1	1	2	2	2	0	1	0	0	10		
24	MIMS, Trena	g	1-9	0-1	0-0	1	1	2	2	2	3	0	0	1	19		
Team						3	1	4									
Totals			17-55	3-16	15-25	12	20	32	21	52	9	16	3	9	200		

1st - FG % 6-16 37.5% 2nd: 2-11 18.2% 3rd: 3-11 27.3% 4th: 6-17 35.3% Game: 17-5 30.9% Deadball
 3FG %: 1-5 20.0% 1-4 25.0% 1-4 25.0% 0-3 0.0% 3-16 18.8% 15-2 60.0% Rebound
 FT %: 1-2 50.0% 1-2 50.0% 9-13 69.2% 4-8 50.0%

UAB 68 • 15-3, 4-1

#	Player	Total			3-Ptr			Rebounds			PF	TP	A	TO	Blk	Stl	Min
		FG-FGA	FG-FGA	FT-FTA	FG-FGA	FG-FGA	FT-FTA	Off	Def	Tot							
24	RAWLS, Kara	f	2-6	0-0	0-0	2	8	10	4	4	1	2	1	2	20		
00	BARNES, Miyah	g	4-6	2-2	2-2	0	1	1	4	12	10	4	0	2	31		
03	VENDRELL, Angela	g	0-3	0-1	0-0	0	8	8	2	0	3	5	3	3	30		
20	KUZMANIC, Deanna	g	2-5	1-1	0-0	0	1	1	3	5	3	2	0	0	17		
32	CHILDRESS, Rachael	g	3-10	2-6	8-8	0	1	1	0	16	3	1	0	0	37		
02	SINGLETON, Whytney	g	0-1	0-0	4-4	0	1	1	2	4	1	2	1	0	8		
04	ROLDAN, Talia	g	0-0	0-0	0-0	0	0	0	0	0	0	0	0	0	2		
12	MAGEE, Trista	g	0-2	0-1	2-2	1	1	2	3	2	0	0	0	0	5		
13	THOMAS, Katelynn	g	11-11	0-0	0-0	0	0	0	3	22	0	3	0	0	19		
14	LEWIS, Terra	g	0-1	0-0	0-0	0	0	0	0	0	0	0	0	0	2		
22	GARLAND, Maya	g	0-1	0-0	0-0	0	0	0	0	0	0	0	0	0	2		
23	KERSTEIN, Lea	g	1-3	1-2	0-0	0	3	3	0	3	0	1	0	0	20		
34	JOHNSON, Imani	g	0-0	0-0	0-0	0	3	3	3	0	0	0	0	0	7		
Team						3	2	5									
Totals			23-49	6-13	16-16	6	29	35	24	68	21	20	5	7	200		

1st - FG % 4-13 30.8% 2nd: 7-12 58.3% 3rd: 7-12 58.3% 4th: 5-12 41.7% Game: 23-4 46.9% Deadball
 3FG %: 2-6 33.3% 1-2 50.0% 1-2 50.0% 2-3 66.7% 6-13 46.2% 16-1 100.0
 FT %: 4-4 100.0 8-8 100.0 2-2 100.0 2-2 100.0

19 WKU 79 - North Texas 65 Denton, TX • 1/26/18

Western Kentucky 79 • 15-5 (6-1)

#	Player	Total			3-Ptr			Rebounds			PF	TP	A	TO	Blk	Stl	Min
		FG-FGA	FG-FGA	FT-FTA	FG-FGA	FG-FGA	FT-FTA	Off	Def	Tot							
15	ELGEDAWY, Raneem	f	5-10	0-0	2-4	4	2	6	5	12	0	0	2	1	20		
23	BROWN, Ivy	f	6-11	1-3	3-3	4	2	6	4	16	2	1	3	2	33		
03	SMITH, Kayla	f	0-0	0-0	0-0	0	1	1	0	0	0	0	0	0	3		
35	CREECH, Whitney	g	0-2	0-0	2-2	0	1	1	2	2	0	2	0	1	12		
10	BROWN, Tashia	g	9-26	0-0	10-11	2	2	4	2	28	2	3	0	2	37		
03	BOPP, Sidnee	g	3-3	1-1	0-0	0	1	1	2	7	4	2	1	1	20		
04	GIVENS, Dee	g	4-11	2-7	0-0	2	3	5	0	10	3	0	1	2	26		
12	TAMPA, Nichel	g	0-1	0-0	0-0	0	0	0	3	0	0	0	0	2	22		
22	PORTER, Sherry	g	2-3	0-0	0-0	2	2	4	3	4	1	0	0	0	27		
Team						2	3	5									
Totals			29-67	4-11	17-20	16	17	33	21	79	12	8	7	11	200		

1st - FG % 9-20 45.0% 2nd: 6-19 31.6% 3rd: 8-14 57.1% 4th: 6-14 42.9% Game: 29-6 43.3% Deadball
 3FG %: 1-4 25.0% 0-2 0.0% 2-3 66.7% 1-2 50.0% 4-11 36.4% 17-2 85.0% Rebound
 FT %: 2-2 100.0 7-9 77.8% 5-5 100.0 3-4 75.0%

North Texas 65 • 11-8 (2-5)

#	Player	Total			3-Ptr			Rebounds			PF	TP	A	TO	Blk	Stl	Min
		FG-FGA	FG-FGA	FT-FTA	FG-FGA	FG-FGA	FT-FTA	Off	Def	Tot							
12	POLAND, Jada	f	2-5	0-0	0-0	2	8	10	3	4	0	1	0	0	34		
34	BUCKNER, Micayla	f	6-8	0-0	1-2	4	3	7	2	13	0	4	0	0	27		
03	SMITH, Brittany	g	1-5	0-0	0-0	1	3	4	4	2	3	4	0	2	32		
23	BRADLEY, Terriell	g	6-16	4-5	13-15	2	4	6	3	29	1	4	2	1	38		
24	MIMS, Trena	g	5-9	1-1	0-0	1	2	3	0	11	6	1	0	0	37		
02	GOODHART, Grace	g	1-2	0-1	0-0	0	0	0	2	2	0	3	0	0	15		
10	HENDERSON, Adrianna	g	1-6	0-3	2-2	0	1	1	2	4	0	4	0	0	12		
21	TERRELL, Deja	g	0-1	0-0	0-0	1	0	1	2	0	0	0	0	0	5		
Team						4	2	6									
Totals			22-52	5-10	16-19	15	23	38	18	65	10	21	2	3	200		

1st - FG % 4-16 25.0% 2nd: 4-10 40.0% 3rd: 4-10 40.0% 4th: 10-11 62.5% Game: 22-5 42.3% Deadball
 3FG %: 1-5 20.0% 1-2

2017-18 BOX SCORES

21

UTSA 70 - North Texas 58
San Antonio, TX • 2/2/18

North Texas 58 • 11-10, 2-7 C-USA

#	Player	Total			3-Ptr			Rebounds			PF	TP	A	TO	Blk	Stl	Min
		FG-FGA	FG-FGA	FT-FTA	FG-FGA	FG-FGA	FT-FTA	Off	Def	Tot							
12	POLAND, Jada	1-1	0-0	0-0	3	3	6	5	2	0	1	2	1	1	18		
34	BUCKNER, Micayla	3-9	0-0	0-2	2	1	3	4	6	0	1	0	0	0	18		
03	SMITH, Brittany	1-6	0-2	1-5	0	0	0	3	3	2	1	0	0	1	24		
23	BRADLEY, Terriell	6-17	1-3	6-8	4	5	9	4	19	2	2	0	2	34			
24	MIMS, Trena	0-7	0-0	0-0	1	2	3	2	0	1	2	0	2	26			
02	GOODHART, Grace	2-7	0-2	0-0	0	2	2	0	4	1	0	0	0	21			
10	HENDERSON, Adrianna	6-10	2-3	2-3	2	1	3	3	16	0	0	0	1	20			
21	TERRELL, Deja	2-5	0-0	3-6	4	1	5	4	7	0	1	3	3	22			
33	HOLMES, Lauren	0-4	0-1	1-2	1	2	3	1	1	1	0	1	1	17			
Team					0			0									
Totals		21-66	3-11	13-26	17	17	34	28	58	7	9	5	11	200			

1st - FG % 6-18 33.3% 2nd: 6-18 33.3% 3rd: 3-19 15.8% 4th: 6-11 54.5% Game: 21-6 31.8% Deadball
3FG %: 0-3 0.0% 2-4 50.0% 0-2 0.0% 1-2 50.0% 3-11 27.3% Rebound
FT %: 2-6 33.3% 3-4 75.0% 2-4 50.0% 6-12 50.0% 13-2 50.0%

UTSA 70 • 4-17, 2-7 C-USA

#	Player	Total			3-Ptr			Rebounds			PF	TP	A	TO	Blk	Stl	Min
		FG-FGA	FG-FGA	FT-FTA	FG-FGA	FG-FGA	FT-FTA	Off	Def	Tot							
20	KEKEC, Kourtney	2-3	1-1	0-0	0	4	4	2	5	1	2	0	2	27			
21	BENSON, Marie	4-13	0-0	11-14	2	8	10	4	19	0	1	1	1	25			
40	MARLOW, Billie	0-1	0-0	0-0	1	3	4	3	0	0	1	0	0	18			
31	HEINEMAN, Carlie	6-7	5-5	2-2	0	3	3	4	19	0	6	0	1	38			
34	DONALD, Karrington	2-5	0-1	1-2	0	2	2	1	5	2	4	0	0	24			
04	CHIDOMERE, Crystal	4-9	0-0	5-10	1	6	7	4	13	3	2	2	29				
15	TOTH, Timea	0-0	0-0	1-2	0	1	1	3	1	0	3	0	0	13			
23	HAWKINS, Tija	3-5	0-0	2-3	4	2	6	4	8	2	3	0	0	23			
33	BENSON, Barbara	0-0	0-0	0-0	0	0	0	2	0	1	1	0	0	3			
Team					3			6									
Totals		21-43	6-7	22-33	11	32	43	27	70	12	23	4	6	200			

1st - FG % 6-17 35.3% 2nd: 5-7 71.4% 3rd: 6-11 54.5% 4th: 4-8 50.0% Game: 21-4 48.8% Deadball
3FG %: 3-3 100.0 0-1 0.0% 8-12 66.7% 6-8 75.0% 6-7 85.7% Rebound
FT %: 4-7 57.1% 4-6 66.7% 8-12 66.7% 6-8 75.0% 22-3 66.7% 5-1

Officials: Mark Zentz, Metta Roberts, Gina Cross
Technical fouls: North Texas-None. UTSA-CHIDOMERE, Crystal.
Attendance: 605

22

North Texas 92 - FIU 46
Miami, FL • 2/8/18

North Texas 92 • 12-10, 3-7 C-USA

#	Player	Total			3-Ptr			Rebounds			PF	TP	A	TO	Blk	Stl	Min
		FG-FGA	FG-FGA	FT-FTA	FG-FGA	FG-FGA	FT-FTA	Off	Def	Tot							
02	GOODHART, Grace	4-8	2-4	0-0	0	4	4	0	10	4	0	0	1	26			
03	SMITH, Brittany	1-5	0-1	0-0	1	1	2	0	2	10	0	0	1	26			
23	BRADLEY, Terriell	11-15	9-10	1-2	1	6	7	3	32	2	2	1	1	32			
24	MIMS, Trena	4-7	0-0	0-0	1	2	3	1	8	3	0	1	2	26			
34	BUCKNER, Micayla	6-10	0-0	0-0	2	3	5	3	12	1	2	2	0	18			
10	HENDERSON, Adrianna	5-7	0-1	0-1	2	3	5	3	10	2	0	0	3	19			
12	POLAND, Jada	2-6	1-2	2-2	2	2	4	1	7	1	1	0	0	13			
13	SHILLOW, Orianna	0-3	0-3	0-0	0	0	0	0	0	1	1	1	0	8			
21	TERRELL, Deja	3-6	0-0	0-0	2	3	5	2	6	0	2	0	0	13			
33	HOLMES, Lauren	2-3	1-2	0-0	0	3	3	0	5	3	0	0	2	19			
Team					2			5									
Totals		38-70	13-23	3-5	13	30	43	13	92	27	8	5	10	200			

1st - FG % 10-1 71.4% 2nd: 9-19 47.4% 3rd: 11-2 55.0% 4th: 8-17 47.1% Game: 38-7 54.3% Deadball
3FG %: 3-6 50.0% 5-8 62.5% 3-4 75.0% 2-5 40.0% 13-2 56.5% Rebound
FT %: 2-2 100.0 0-0 0.0% 1-2 50.0% 0-1 0.0% 3-5 60.0% 1

FIU 46 • 6-17, 3-4 C-USA

#	Player	Total			3-Ptr			Rebounds			PF	TP	A	TO	Blk	Stl	Min
		FG-FGA	FG-FGA	FT-FTA	FG-FGA	FG-FGA	FT-FTA	Off	Def	Tot							
01	POUND, Khandrea	2-6	1-2	0-0	4	1	5	0	5	0	3	2	0	26			
02	LEE, Cabria	0-4	0-3	0-0	0	2	2	2	0	2	2	0	0	30			
03	SNIPES, Lauryn	2-6	2-4	0-0	1	3	4	1	6	1	2	0	0	38			
15	HUDSON, Kristian	5-22	2-9	3-4	0	2	2	15	4	3	0	0	36				
23	CAVANAGH, Callie	2-4	0-0	1-1	0	0	0	5	0	0	0	0	15				
10	TAYLOR, TaMiracle	2-6	0-2	5-7	1	4	5	2	9	1	4	1	2	31			
12	DEMERY, Quira	1-1	0-0	0-0	0	0	0	2	2	0	1	0	1	8			
34	WALKER, Shante	1-4	0-1	2-2	2	8	10	1	4	0	3	1	0	16			
Team					2			2									
Totals		15-53	5-21	11-14	10	20	30	10	46	8	18	4	3	200			

1st - FG % 3-16 18.8% 2nd: 3-10 30.0% 3rd: 6-14 42.9% 4th: 3-13 23.1% Game: 15-5 28.3% Deadball
3FG %: 2-5 40.0% 2-6 33.3% 1-6 16.7% 0-4 0.0% 5-21 23.8% Rebound
FT %: 0-0 0.0% 1-2 50.0% 6-8 75.0% 4-4 100.0% 11-1 78.6% 1

Officials: Troy Winters, Meadow Overstreet, Xiomara Cruz
Technical fouls: North Texas-None. FIU-None.
Attendance: 298

23

North Texas 65 - Florida Atlantic 51
Boca Raton, FL • 2/10/18

North Texas 65 • 13-10, 4-7 CUSA

#	Player	Total			3-Ptr			Rebounds			PF	TP	A	TO	Blk	Stl	Min
		FG-FGA	FG-FGA	FT-FTA	FG-FGA	FG-FGA	FT-FTA	Off	Def	Tot							
02	GOODHART, Grace	1-3	1-2	1-2	0	2	2	2	4	0	0	0	1	19			
03	SMITH, Brittany	0-3	0-0	0-0	0	1	1	4	0	2	4	0	0	26			
23	BRADLEY, Terriell	6-12	1-3	7-8	1	4	5	1	20	2	1	0	0	33			
24	MIMS, Trena	2-7	0-1	0-0	1	0	1	4	4	1	4	0	0	29			
34	BUCKNER, Micayla	0-1	0-0	0-0	0	1	1	1	0	1	1	0	0	6			
10	HENDERSON, Adrianna	3-6	1-2	1-2	0	2	2	0	8	0	0	0	0	21			
12	POLAND, Jada	0-2	0-0	0-0	0	1	1	3	0	1	2	0	1	13			
21	TERRELL, Deja	4-9	0-0	3-3	4	5	9	3	11	0	2	2	0	34			
33	HOLMES, Lauren	6-12	4-9	2-3	3	6	9	3	18	0	0	0	3	31			
Team					1			2									
Totals		22-49	7-17	14-18	10	23	33	21	65	7	15	2	5	202			

1st - FG % 3-13 23.1% 2nd: 6-16 37.5% 3rd: 7-12 58.3% 4th: 6-14 42.9% Game: 22-5 40.0% Deadball
3FG %: 2-5 40.0% 2-6 33.3% 2-3 66.7% 1-3 33.3% 7-17 41.2% Rebound
FT %: 4-5 80.0% 2-3 66.7% 7-9 77.8% 1-1 100.0 14-1 77.8% 2

Florida Atlantic 51 • 10-11, 4-6 CUSA

#	Player	Total			3-Ptr			Rebounds			PF	TP	A	TO	Blk	Stl	Min
		FG-FGA	FG-FGA	FT-FTA	FG-FGA	FG-FGA	FT-FTA	Off	Def	Tot							
00	FORD, Danneal	4-9	0-0	4-4	1	4	5	4	12	3	1	0	0	30			
13	WILLIAMS, DaChe	0-1	0-1	0-0	0	0	0	2	0	0	1	0	0	13			
15	CEDENO, Sasha	7-15	0-4	6-6	2	8	10	0	20	0	6	2	2	39			
32	KENCY, Malia	4-8	2-3	0-0	0	4	4	2	10	3	2	0	2	37			
05	MYERS, Melinda	1-5	1-3	2-2	0	2	2	3	5	2	3	0	0	28			
10	DOYLE, Raven	1-3	0-0	0-0	1	2	3	2	2	0	2	0	0	16			
10	WILLIAMS, Jamarria	0-1	0-0	0-0	1	1	2	3	0	1	1	0	0	13			
31	GABRIEL, Ra'Kyra	0-4	0-0	2-4	1	4	5	2	0	3	0	1	24				
Team					0			1									
Totals		17-46	3-11	14-16	7	25	32	21	51	9	20	2	5	200			

1st - FG % 9-17 52.9% 2nd: 3-12 25.0% 3rd: 3-8 37.5% 4th: 2-9 22.2% Game: 17-4 37.0% Deadball
3FG %: 2-6 33.3% 1-4 25.0% 0-0 0.0% 0-1 0.0% 3-11 27.3% Rebound
FT %: 1-2 50.0% 3-4 75.0% 6-6 100.0 4-4 100.0 1

Officials: Bill Larence, Bryan Gariand, Angelica Suffren
Technical fouls: North Texas-None. Florida Atlantic-None.
Attendance: 786

Score by periods	1st	2nd	3rd	4th	Total
North Texas	12	16	23	14	65
Florida Atlantic	21	10	12	8	51

	Points	In Paint	Off T/O	2nd Chanc	Fast Break	Bench
NT	20	15	13	0	37	
FAU	18	18	2	0	4	

24

North Texas 71 - Southern Miss 62
Denton, TX • 2/15/18

Southern Miss 62 • 13-11 (5-6)

2017-18 C-USA STATS

#	Player	gp-gs	min	avg	Total		3-Point		F-Throw		Rebounds				pf	dq	a	to	blk	stl	pts	avg			
					fg-fga	fg%	3fg-fga	3fg%	ft-fa	ft%	off	def	tot	avg											
23	BRADLEY, Terriell	12-12	426	35.5	75-176	.426	34-64	.531	76-96	.792	23	50	73	6.1	29	0	23	28	8	16	260	21.7			
34	BUCKNER, Micayla	12-12	264	22.0	38-79	.481	0-2	.000	8-18	.444	25	30	55	4.6	39	2	4	23	10	7	84	7.0			
33	HOLMES, Lauren	11-6	278	25.3	27-95	.284	14-55	.255	6-9	.667	18	25	43	3.9	27	0	6	9	5	20	74	6.7			
03	SMITH, Brittany	12-12	360	30.0	22-67	.328	5-15	.333	15-27	.556	6	24	30	2.5	28	0	48	25	1	11	64	5.3			
02	GOODHART, Grace	12-8	250	20.8	21-61	.344	13-38	.342	7-14	.500	1	20	21	1.8	19	0	20	14	0	10	62	5.2			
10	HENDERSON, Adriann	12-0	151	12.6	22-47	.468	5-17	.294	11-18	.611	7	15	22	1.8	16	0	5	13	0	7	60	5.0			
24	MIMS, Trena	12-7	325	27.1	24-68	.353	2-6	.333	3-5	.600	14	14	28	2.3	16	0	24	16	4	6	53	4.4			
21	TERRELL, Deja	12-0	152	12.7	17-39	.436	0-4	.000	9-15	.600	16	19	35	2.9	33	1	1	14	11	5	43	3.6			
12	POLAND, Jada	12-3	186	15.5	13-27	.481	2-4	.500	9-18	.500	12	27	39	3.3	25	1	4	11	4	6	37	3.1			
13	SHILLOW, Orianna	2-0	10	5.0	0-3	.000	0-3	.000	0-0	.000	0	0	0	0.0	0	0	1	1	1	0	0	0.0			
Team											23	29	52												4
Total.....		12	2402		259-662	.391	75-208	.361	144-220	.655	145	253	398	33.2	232	4	136	158	44	88	737	61.4			
Opponents.....		12	2400		237-583	.407	62-172	.360	171-228	.750	122	293	415	34.6	225	5	124	213	32	74	707	58.9			

TEAM STATISTICS

	NT	OPP
SCORING	737	707
Points per game	61.4	58.9
Scoring margin	+2.5	-
FIELD GOALS-ATT	259-662	237-583
Field goal pct	.391	.407
3 POINT FG-ATT	75-208	62-172
3-point FG pct	.361	.360
3-pt FG made per game	6.3	5.2
FREE THROWS-ATT	144-220	171-228
Free throw pct	.655	.750
F-Throws made per game	12.0	14.3
REBOUNDS	398	415
Rebounds per game	33.2	34.6
Rebounding margin	-1.4	-
ASSISTS	136	124
Assists per game	11.3	10.3
TURNOVERS	158	213
Turnovers per game	13.2	17.8
Turnover margin	+4.6	-
Assist/turnover ratio	0.9	0.6
STEALS	88	74
Steals per game	7.3	6.2
BLOCKS	44	32
Blocks per game	3.7	2.7
ATTENDANCE	6920	7037
Home games-Avg/Game	6-1153	6-1173
Neutral site-Avg/Game	-	0-0

Date	Opponent	Score	Att.
* 01/03/18	at Louisiana Tech	L 53-61	1749
* 1/5/18	RICE	L 49-50	1211
* 1/11/18	OLD DOMINION	W 63-46	1028
* 1/13/18	CHARLOTTE	W 73-68	643
* 01/18/18	at Middle Tennessee	L 48-56	3230
* 01/20/18	at UAB	L 52-68	369
* 1/26/18	WESTERN KENTUCKY	L 65-79	1134
* 1/28/18	UTEP	L 48-50	1302
* 2/2/18	at UTSA	L 58-70	605
* 02/08/18	at FIU	W 92-46	298
* 02/10/18	at Florida Atlantic	W 65-51	786
* 2/15/18	SOUTHERN MISS	W 71-62	1602

* = Conference game

Score by Periods	1st	2nd	3rd	4th	Totals
North Texas	162	183	201	191	737
Opponents	177	169	199	162	707

2017-18 SEASON STATS

#	Player	gp-gs	min	Total		3-Point		F-Throw		Rebounds					pts	avg									
				fg-fga	fg%	3fg-fga	3fg%	ft-fta	ft%	off	def	tot	avg	pf			dq	a	to	blk	stl				
23	BRADLEY, Terriell	24-24	827	34.5	146-342	.427	47-104	.452	122-151	.808	45	94	139	5.8	61	1	54	60	10	39	461	19.2			
33	HOLMES, Lauren	22-17	603	27.4	75-225	.333	34-125	.272	21-25	.840	50	56	106	4.8	52	0	15	19	13	50	205	9.3			
34	BUCKNER, Micayla	24-24	566	23.6	83-166	.500	0-6	.000	15-42	.357	49	85	134	5.6	77	4	7	46	29	18	181	7.5			
24	MIMS, Trena	24-18	665	27.7	57-148	.385	3-13	.231	20-34	.588	30	37	67	2.8	48	1	50	36	4	17	137	5.7			
02	GOODHART, Grace	24-14	525	21.9	46-136	.338	25-85	.294	14-22	.636	2	41	43	1.8	39	0	36	31	2	25	131	5.5			
03	SMITH, Brittany	22-20	639	29.0	41-118	.347	11-31	.355	31-51	.608	13	46	59	2.7	56	2	77	51	3	23	124	5.6			
10	HENDERSON, Adriann	23-0	297	12.9	34-81	.420	9-28	.321	21-31	.677	17	27	44	1.9	33	1	9	26	1	15	98	4.3			
21	TERRELL, Deja	24-0	299	12.5	36-86	.419	1-12	.083	21-41	.512	40	36	76	3.2	58	1	4	25	18	11	94	3.9			
12	POLAND, Jada	24-3	348	14.5	21-54	.389	2-6	.333	16-32	.500	23	58	81	3.4	51	1	8	22	9	13	60	2.5			
13	SHILLOW, Orianna	10-0	58	5.8	0-17	.000	0-17	.000	2-2	1.000	0	1	1	0.1	3	0	2	1	1	1	2	0.2			
Team											44	52	96												8
Total.....		24	4827		539-1373	.393	132-427	.309	283-431	.657	313	533	846	35.2	478	11	262	325	90	212	1493	62.2			
Opponents.....		24	4825		441-1157	.381	115-353	.326	313-452	.692	259	590	849	35.4	444	10	233	471	66	149	1310	54.6			

TEAM STATISTICS	NT	OPP	Date	Opponent	Score	Att.
SCORING	1493	1310	11/10/17	MACU	W 86-52	1007
Points per game	62.2	54.6	11/14/17	TEXAS A&M INTERNATIONAL	W 64-38	807
Scoring margin	+7.6	-	11/19/17	K-STATE	L 54-55	1172
FIELD GOALS-ATT	539-1373	441-1157	11/23/17	vs COASTAL CAROLINA	W 50-34	0
Field goal pct	.393	.381	11/24/17	vs DETROIT	W 63-57	175
3 POINT FG-ATT	132-427	115-353	11/29/17	SMU	W 47-40	3243
3-point FG pct	.309	.326	12/2/17	TULSA	W 66-43	1181
3-pt FG made per game	5.5	4.8	12-5-17	at Indiana	L 63-68	2303
FREE THROWS-ATT	283-431	313-452	12/09/17	LA SALLE	W 70-44	996
Free throw pct	.657	.692	12/18/17	at UIC	L 67-70	249
F-Throws made per game	11.8	13.0	12/20/17	at Eastern Illinois	Wot 63-61	287
REBOUNDS	846	849	12/30/17	OKLAHOMA PANHANDLE ST. UNI	W 63-41	397
Rebounds per game	35.2	35.4	* 01/03/18	at Louisiana Tech	L 53-61	1749
Rebounding margin	-0.1	-	* 1/5/18	RICE	L 49-50	1211
ASSISTS	262	233	* 1/11/18	OLD DOMINION	W 63-46	1028
Assists per game	10.9	9.7	* 1/13/18	CHARLOTTE	W 73-68	643
TURNOVERS	325	471	* 01/18/18	at Middle Tennessee	L 48-56	3230
Turnovers per game	13.5	19.6	* 01/20/18	at UAB	L 52-68	369
Turnover margin	+6.1	-	* 1/26/18	WESTERN KENTUCKY	L 65-79	1134
Assist/turnover ratio	0.8	0.5	* 1/28/18	UTEP	L 48-50	1302
STEALS	212	149	* 2/2/18	at UTSA	L 58-70	605
Steals per game	8.8	6.2	* 02/08/18	at FIU	W 92-46	298
BLOCKS	90	66	* 02/10/18	at Florida Atlantic	W 65-51	786
Blocks per game	3.8	2.8	* 2/15/18	SOUTHERN MISS	W 71-62	1602
ATTENDANCE	15723	10051				
Home games-Avg/Game	13-1209	9-1097	* = Conference game			
Neutral site-Avg/Game	-	2-88				

Score by Periods	1st	2nd	3rd	4th	OT	Totals
North Texas	355	368	380	382	8	1493
Opponents	327	325	327	325	6	1310